

LEGEND

- CATCHMENT LINE
- PROPOSED BOUNDARY
- EXISTING SITE BOUNDARY
- STORMWATER HARVESTING MAIN THIS STAGE
- STORMWATER HARVESTING MAIN FORMER STAGE
- LOW FLOW DIVERSION LINE (MAJOR) THIS STAGE
- LOW FLOW DIVERSION LINE (MAJOR) FORMER STAGE
- ACTIVE TRANSPORT LINK
- ACQUISITIONS REFER 14020_SK034G BY NETTLETON TRIBE

TYPES

- LOT - DEVELOPED
- LANDSCAPE (UNDISTURBED)
- LANDSCAPE (PROPOSED)
- LANDSCAPE - FUTURE LOT
- ROAD
- BASIN AREA
- LANDSCAPE - FUTURE BASIN

SYDNEY UNIVERSITY LANDS

AREA SUMMARY		
STUDY AREA	163.60	ha
ENT - TOTAL	42.05	ha
POS - PRIVATE	7.16	ha
POS - PUBLIC	30.12	ha
FUTURE LOTS (POTENTIAL)	83.15	ha
REUSE RATES		
ENT - TOTAL	3.2	kL/day
POS - PRIVATE	3000	kL/ha/year
POS - PUBLIC	3000	kL/ha/year
FUTURE LOTS (POTENTIAL)	3000	kL/ha/year
AVAILABLE REUSE DEMAND		
ENT - TOTAL	134.6	kL/day
POS - Private	21473.4	kL/year
POS - PUBLIC	90368.3	kL/year
IRRIGATION OF FUTURE LOTS (MAX)	248438.5	kL/year
IRRIGATION TOTAL (MAX)	361278.2	kL/year
PROPOSED REUSE DEMAND		
ENT - TOTAL	0.00	kL/day
POS - Private	0.00	kL/year
POS - PUBLIC	90368.28	kL/year
IRRIGATION OF FUTURE LOTS	126398.61	kL/year
IRRIGATION TOTAL (MAX)	216796.89	kL/year
FUTURE LOT IRRIGATION AREA @ 3000 kL/ha/year	42.13	ha
FUTURE LOT IRRIGATION AREA @ 6000 kL/ha/year	21.07	ha
MODE	WATER QUALITY DRIVEN	

	STAGE1	STAGE1	STAGE1
BASIN INFRASTRUCTURE	Basin_NG12	Basin_NG15	Basin_NG13
	Basin AB	Basin C	Basin D2
Basin modelling allocation (ha) - MODELLING ONLY	1.98	2.414	1.1451
Bioretention Filter Surface Area (m2)	2200	1456	779
Wetland Plan Area (m2)	2384	2321	1053
Pond Plan Area (m2)	6326	7148	3300
Pond Volume (m3)	13560	15827	6290
Sediment Basin Surface Area (m2)	852	824	371
Residual Allocation Area (Ha)	0.892	1.3215	0.6319
STORMWATER HARVESTING	STAGE(m)	TOTAL (m)	
STORMWATER HARVESTING MAIN		1174	1174
LOW FLOW DIVERSION (MAJOR)	STAGE(m)	TOTAL (m)	
LOW FLOW DIVERSION MAIN		420	420

PROJECT STAGING PLAN - STAGE 1
SCALE: 1:3000

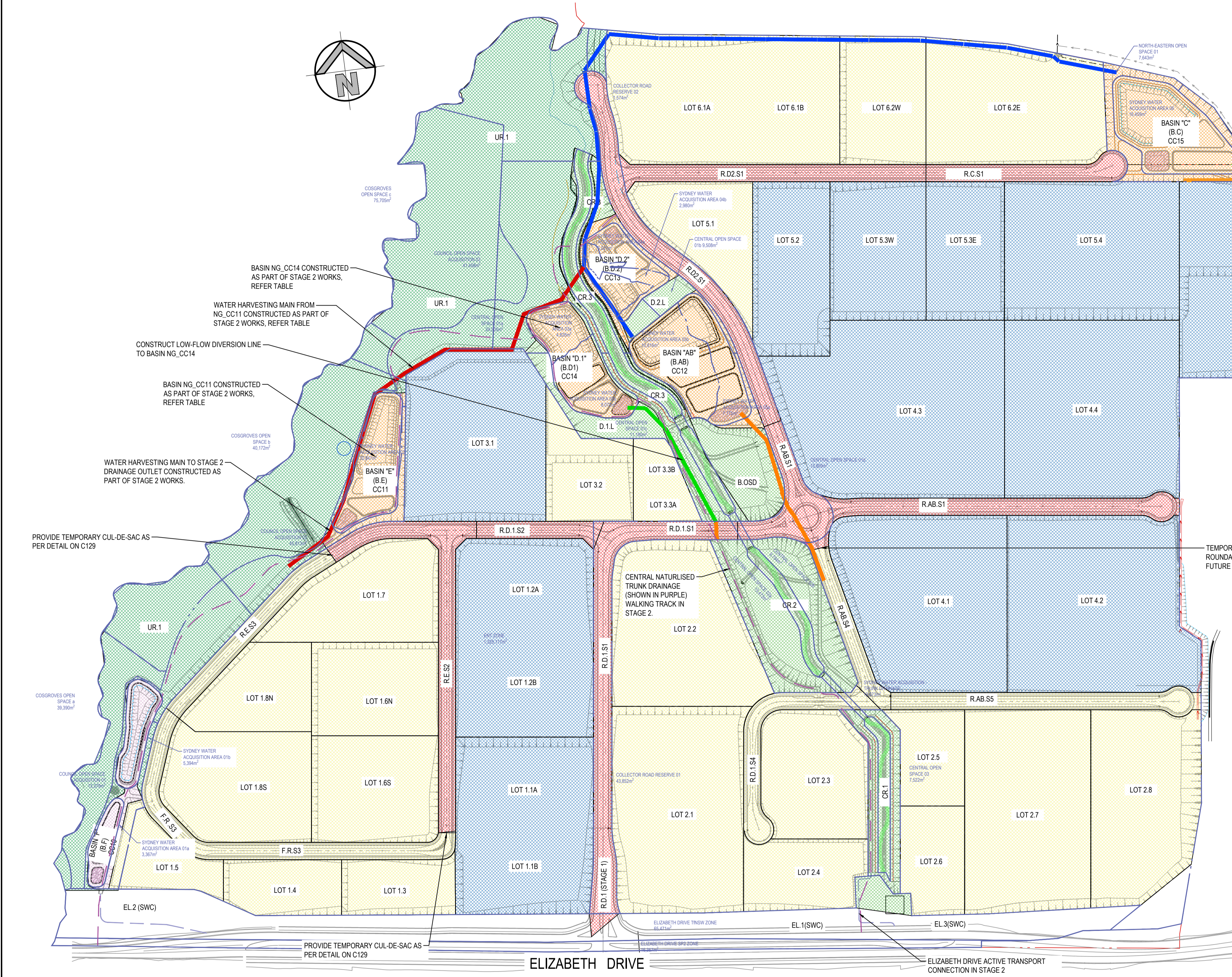
ISSUED FOR SSDA

SURVEY INFORMATION SURVEYED BY: LTSL DATUM: AHD ORIGIN OF LEVELS: PMZ5501, RL59.659				Client: HB&B Property Pty and ISPT Pty Ltd Architect / Surveyor: NETTLETONTRIBE Suite 2.01, 828 Pacific Highway, Gordon NSW 2072 Telephone: +61 2 9417 8400 Facsimile: +61 2 9417 8337 Email: email@hobson.com.au Web: www.henryandhymas.com.au				Project: BURRAH PARK ELIZABETH DRIVE, BADGERYS CREEK, NSW Title: PROJECT STAGING - STAGE 1				Drawn: L.Caha Designed: N.Wetzlar Checked: N.Wetzlar Drawing number: 240518_DA_C171				Original issue date: 45413 Scale: @A1 1:3000 Revision: 02			
02	ISSUED FOR STATE SIGNIFICANT DEVELOPMENT APPLICATION (SSDA)	LC	NW	11.12.2025															
01	ISSUED FOR STATE SIGNIFICANT DEVELOPMENT APPLICATION (SSDA)	LC	NW	04.12.2025															

This drawing and design remains the property of Henry & Hymas and may not be copied in whole or in part without the prior written approval of Henry & Hymas.

DRAWING TO BE PRINTED IN COLOUR





LEGEND

- CATCHMENT LINE
- PROPOSED BOUNDARY
- EXISTING SITE BOUNDARY
- STORMWATER HARVESTING MAIN THIS STAGE
- STORMWATER HARVESTING MAIN FORMER STAGE
- LOW FLOW DIVERSION LINE (MAJOR) THIS STAGE
- LOW FLOW DIVERSION LINE (MAJOR) FORMER STAGE
- ACTIVE TRANSPORT LINK
- ACQUISITIONS REFER 14020_SK034G BY NETTLETON TRIBE

TYPES

- LOT - DEVELOPED
- LANDSCAPE (UNDISTURBED)
- LANDSCAPE (PROPOSED)
- LANDSCAPE - FUTURE LOT
- ROAD
- BASIN AREA
- LANDSCAPE - FUTURE BASIN

SYDNEY UNIVERSITY LANDS

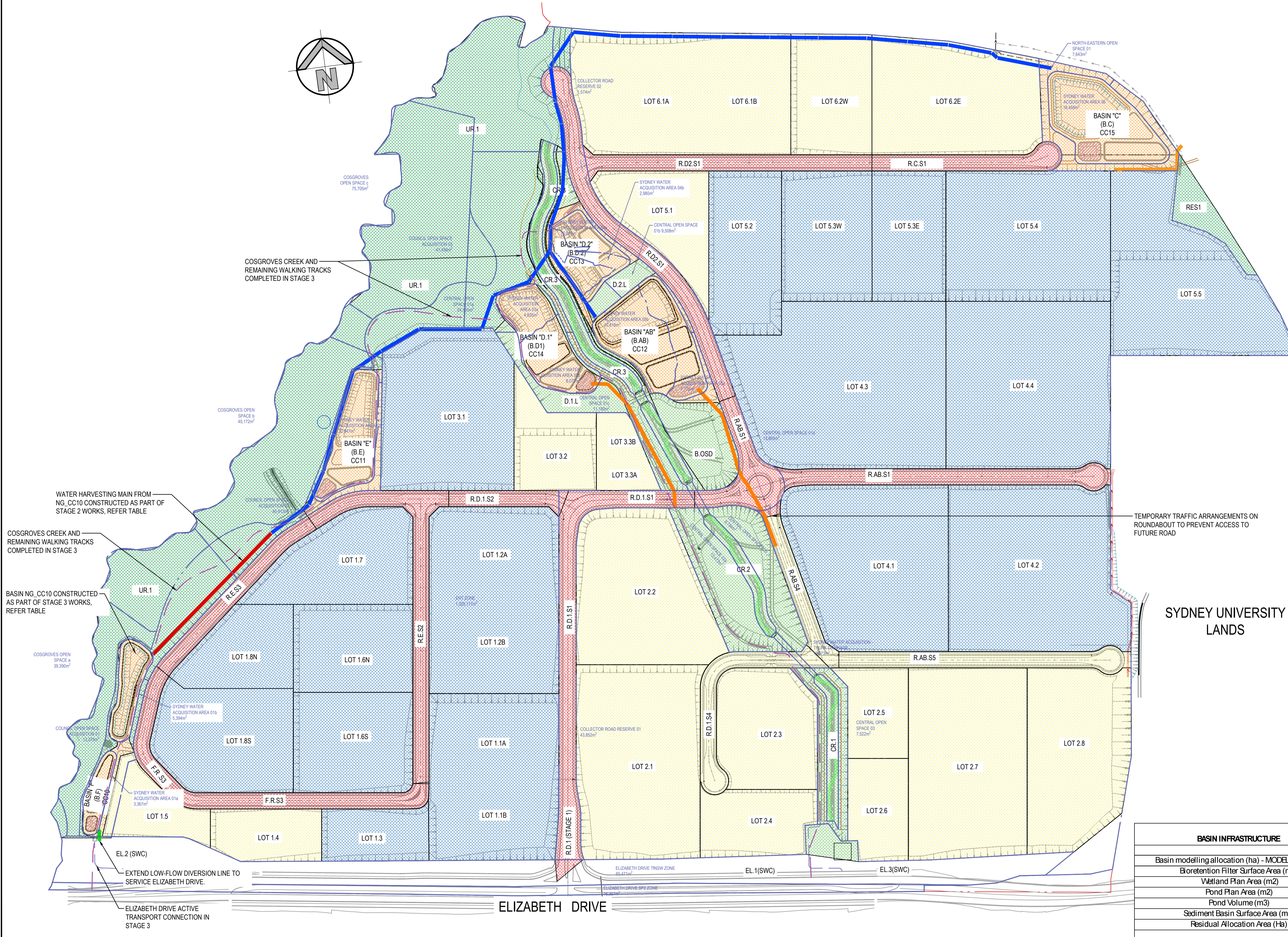
AREA SUMMARY		
STUDY AREA	163.60	ha
ENT - TOTAL	56.67	ha
POS - PRIVATE	9.30	ha
POS - PUBLIC	30.12	ha
FUTURE LOTS (POTENTIAL)	63.41	ha
REUSE RATES		
ENT - TOTAL	3.2	kL/day
POS - PRIVATE	3000	kL/ha/year
POS - PUBLIC	3000	kL/ha/year
FUTURE LOTS (POTENTIAL)	3000	kL/ha/year
AVAILABLE REUSE DEMAND		
ENT - TOTAL	181.3	kL/day
POS - Private	27898.1	kL/year
POS - PUBLIC	90368.3	kL/year
FUTURE LOTS (MAX)	190217.4	kL/year
IRRIGATION TOTAL (MAX)	308493.8	kL/ha/year
PROPOSED REUSE DEMAND		
ENT - TOTAL	0.00	kL/day
POS - Private	0.00	kL/year
POS - PUBLIC	90368.28	kL/year
IRRIGATION OF FUTURE LOTS	63878.60	kL/year
IRRIGATION TOTAL	154246.88	kL/ha/year
FUTURE LOT IRRIGATION AREA @ 3000 kL/ha/year	21.29	ha
FUTURE LOT IRRIGATION AREA @ 6000 kL/ha/year	10.65	ha
MODE	WATER QUALITY DRIVEN	

	STAGE 1	STAGE 1	STAGE 2	STAGE 1	STAGE 2
BASIN INFRASTRUCTURE	Basin_NG12	Basin_NG15	Basin_NG14	Basin_NG13	Basin_NG11
Basin modelling allocation (ha) - MODELLING ONLY	Basin AB	Basin C	Basin D.1	Basin D.2	Basin E
Bore Retention Filter Surface Area (m2)	1.98	2.414	1.2082	1.1451	1.3337
Wetland Plan Area (m2)	2200	1456	1200	779	1100
Pond Plan Area (m2)	2384	2321	1527	1053	1212
Pond Volume (m3)	6326	7148	4876	3300	4118
Sediment Basin Surface Area (m2)	13560	15827	9898	6290	6408
Residual Allocation Area (Ha)	852	824	506	371	427
	0.892	1.3215	0.4479	0.6319	0.6907
STORMWATER HARVESTING		STAGE (m)	TOTAL (m)		
STORMWATER HARVESTING MAIN		651	1825		
LOW FLOW DIVERSION (MAJOR)		STAGE (m)	TOTAL (m)		
LOW FLOW DIVERSION MAIN		212	632		

**PROJECT STAGING PLAN
STAGE 2
SCALE: 1:3000**

ISSUED FOR SSDA

SURVEY INFORMATION SURVEYED BY: LTSL	Client HB&B Property Pty and ISPT Pty Ltd Archibald / Surveyor NETTLETONTRIBE	Suite 2.01 828 Pacific Highway Gordon NSW 2072 Telephone +61 2 9417 8400 Facsimile +61 2 9417 8337 Email email@hbcns.com.au Web www.henryandhymas.com.au	Project BURRAH PARK ELIZABETH DRIVE, BADGERYS CREEK, NSW Title PROJECT STAGING - STAGE 2	Drawn L.Caha Checked N.Wetzlar Drawing number 240518_DA_C172	Designed N.Wetzlar Approved A.Francis Scale @A1 1:3000 Original issue date 45413 Revision 02
DATUM: AHD ORIGIN OF LEVELS: PM25501, RL59.659					
This drawing and design remains the property of Henry & Hymas and may not be copied in whole or in part without the prior written approval of Henry & Hymas.					
DRAWING TO BE PRINTED IN COLOUR					



LEGEND

- CATCHMENT LINE
- - - PROPOSED BOUNDARY
- - - EXISTING SITE BOUNDARY
- STORMWATER HARVESTING MAIN THIS STAGE
- STORMWATER HARVESTING MAIN FORMER STAGE
- LOW FLOW DIVERSION LINE (MAJOR) THIS STAGE
- LOW FLOW DIVERSION LINE (MAJOR) FORMER STAGE
- ACTIVE TRANSPORT LINK
- ACQUISITIONS REFER 14020_SK034G BY NETTLETON TRIBE

TYPES

- LOT - DEVELOPED
- LANDSCAPE (UNDISTURBED)
- LANDSCAPE (PROPOSED)
- LANDSCAPE - FUTURE LOT
- ROAD
- BASIN AREA
- LANDSCAPE - FUTURE BASIN

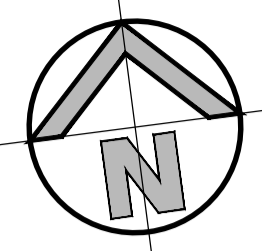
AREA SUMMARY		
STUDY AREA	163.60	ha
ENT- TOTAL	70.41	ha
POS- PRIVATE	11.36	ha
POS- PUBLIC	30.12	ha
FUTURE LOTS (POTENTIAL)	46.51	ha
REUSE RATES		
ENT- TOTAL	3.2	kL/day
POS- PRIVATE	3000	kL/ha/year
POS- PUBLIC	3000	kL/ha/year
FUTURE LOTS (POTENTIAL)	3000	kL/ha/year
AVAILABLE REUSE DEMAND		
ENT- TOTAL	225.3	kL/day
POS- Private	34093.9	kL/year
POS- PUBLIC	90368.3	kL/year
FUTURE LOTS	139522.2	kL/year
IRRIGATION TOTAL	263984.3	kL/ha/year
PROPOSED REUSE DEMAND		
ENT- TOTAL	0.00	kL/day
POS- Private	0.00	kL/year
POS- PUBLIC	90368.28	kL/year
IRRIGATION OF FUTURE LOTS	120819.19	kL/year
IRRIGATION TOTAL	211187.47	kL/ha/year
FUTURE LOT IRRIGATION AREA @ 3000 kL/ha/year	49.27	ha
FUTURE LOT IRRIGATION AREA @ 6000 kL/ha/year	20.14	ha
MODE	WATER QUALITY DRIVEN	

	STAGE1	STAGE1	STAGE2	STAGE1	STAGE2	STAGE3
BASIN INFRASTRUCTURE	Basin_NG12	Basin_NG15	Basin_NG14	Basin_NG13	Basin_NG11	Basin_NG10
Basin AB	Basin D.1	Basin C	Basin D.2	Basin D.2	Basin E	Basin F
Basin modelling allocation (ha) - MODELLING ONLY	1.98	2.414	1.2082	1.1451	1.3337	0.974
Bioretention Filter Surface Area (m2)	2200	1456	1200	779	1100	536
Wetland Plan Area (m2)	2384	2321	1527	1053	1212	808
Pond Plan Area (m2)	6326	7148	4876	3300	4118	3173
Pond Volume (m3)	13560	15827	9898	6290	6408	4665
Sediment Basin Surface Area (m2)	852	824	506	371	427	300
Residual Allocation Area (Ha)	0.892	1.3215	0.4479	0.6319	0.6907	0.5223
STORMWATER HARVESTING	STAGE (m)	TOTAL (m)				
STORMWATER HARVESTING MAIN	250	2075				
LOW FLOW DIVERSION (MAJOR)	STAGE (m)	TOTAL (m)				
LOW FLOW DIVERSION MAIN	290	922				

PROJECT STAGING PLAN
STAGE 3
 SCALE: 1:3000

ISSUED FOR SSDA

SURVEY INFORMATION				Client: HB&B Property Pty and ISPT Pty Ltd				Suite 2.01 828 Pacific Highway Gordon NSW 2072				Telephone: +61 2 9417 8400 Facsimile: +61 2 9417 8337 Email: email@hobson.com.au Web: www.henryandhymas.com.au				Project: BURRAH PARK ELIZABETH DRIVE, BADGERYS CREEK, NSW				Drawn: L.Caha Designed: N.Wetzlar Checked: N.Wetzlar Approved: A.Francis				Original issue date: 45413 Scale: @A1 1:3000			
SURVEYED BY: LTSL				Architect / Surveyor: NETTLETONTRIBE				Client: NETTLETONTRIBE				Drawing number: 240518_DA_C173				Revision: 02											
DATUM: AHD				This drawing and design remains the property of Henry & Hymas and may not be copied in whole or in part without the prior written approval of Henry & Hymas.				DRAWING TO BE PRINTED IN COLOUR				Project: PROJECT STAGING - STAGE 3															
ORIGIN OF LEVELS: PMZ5501, RL59.659																											
REVISION				AMENDMENT				DRAWN				DESIGNED				DATE											
02				ISSUED FOR STATE SIGNIFICANT DEVELOPMENT APPLICATION (SSDA)				LC				NW				11.12.2025											
01				ISSUED FOR STATE SIGNIFICANT DEVELOPMENT APPLICATION (SSDA)				LC				NW				04.12.2025											

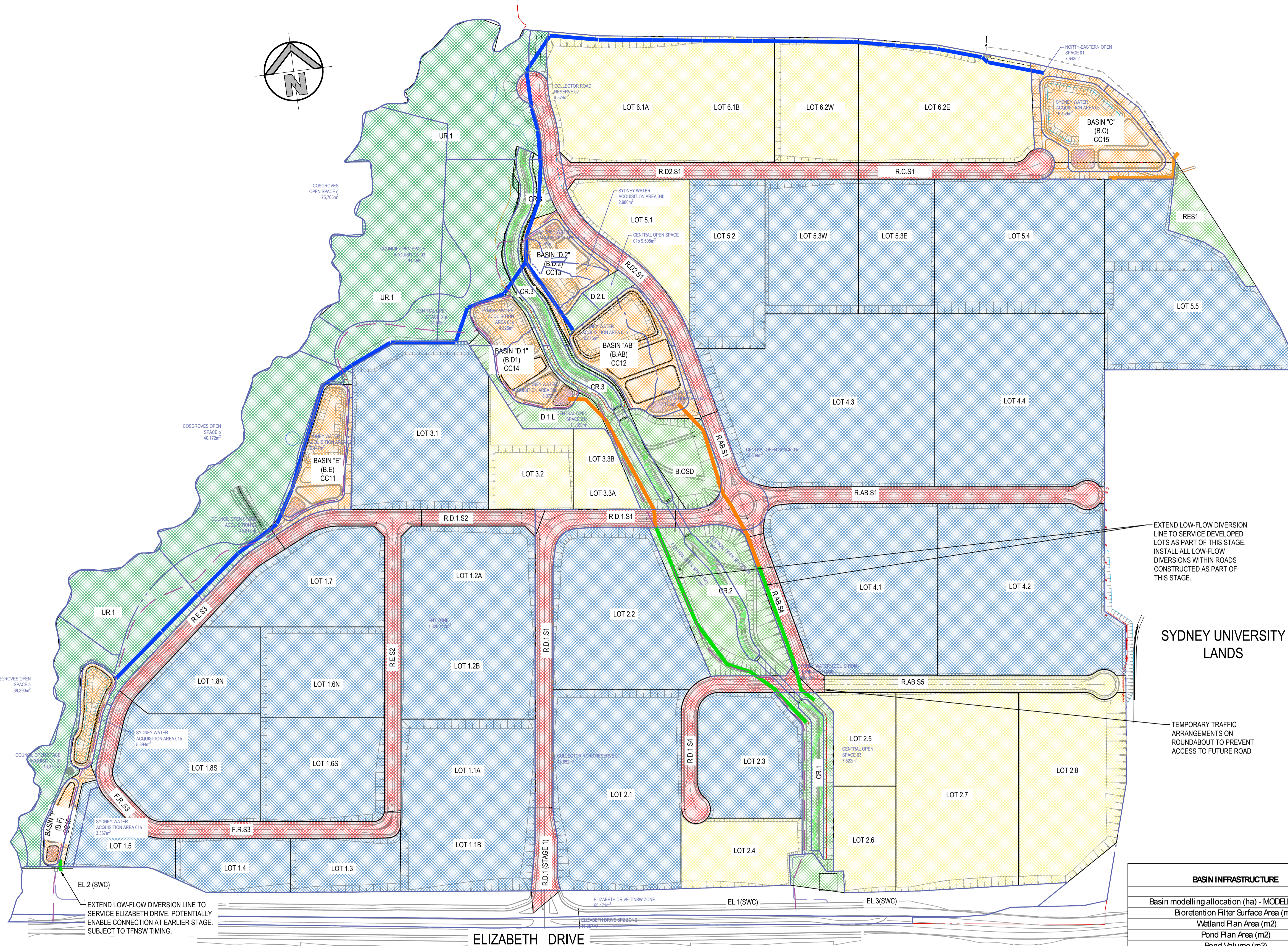


LEGEND

- CATCHMENT LINE
- PROPOSED BOUNDARY
- EXISTING SITE BOUNDARY
- STORMWATER HARVESTING MAIN THIS STAGE
- STORMWATER HARVESTING MAIN FORMER STAGE
- LOW FLOW DIVERSION LINE (MAJOR) THIS STAGE
- LOW FLOW DIVERSION LINE (MAJOR) FORMER STAGE
- ACTIVE TRANSPORT LINK
- ACQUISITIONS REFER 14020_SK034G BY NETTLETON TRIBE

TYPES

- LOT - DEVELOPED
- LANDSCAPE (UNDISTURBED)
- LANDSCAPE (PROPOSED)
- LANDSCAPE - FUTURE LOT
- ROAD
- BASIN AREA
- LANDSCAPE - FUTURE BASIN



EXTEND LOW-FLOW DIVERSION LINE TO SERVICE DEVELOPED LOTS AS PART OF THIS STAGE. INSTALL ALL LOW-FLOW DIVERSIONS WITHIN ROADS CONSTRUCTED AS PART OF THIS STAGE.

SYDNEY UNIVERSITY LANDS

TEMPORARY TRAFFIC ARRANGEMENTS ON ROUNDABOUT TO PREVENT ACCESS TO FUTURE ROAD

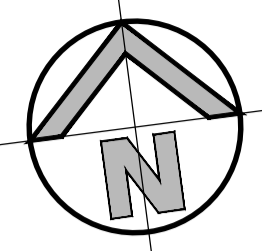
AREA SUMMARY		
STUDY AREA	163.60	ha
ENT - TOTAL	84.86	ha
POS - PRIVATE	13.53	ha
POS - PUBLIC	30.12	ha
FUTURE LOTS (POTENTIAL)	30.58	ha
REUSE RATES		
ENT - TOTAL	3.2	kL/day
POS - PRIVATE	3000	kL/ha/year
POS - PUBLIC	3000	kL/ha/year
FUTURE LOTS (POTENTIAL)	6000	kL/ha/year
AVAILABLE REUSE DEMAND		
ENT - TOTAL	271.5	kL/day
POS - Private	40594.2	kL/year
POS - PUBLIC	90368.3	kL/year
FUTURE LOTS	183453.6	kL/year
IRRIGATION TOTAL	314416.1	kL/ha/year
PROPOSED REUSE DEMAND		
ENT - TOTAL	0.00	kL/day
POS - Private	40594.20	kL/year
POS - PUBLIC	90368.28	kL/year
IRRIGATION OF FUTURE LOTS	152011.99	kL/year
IRRIGATION TOTAL	282974.47	kL/ha/year
FUTURE LOT IRRIGATION AREA @ 3000 kL/ha/year	50.67	ha
FUTURE LOT IRRIGATION AREA @ 6000 kL/ha/year	25.34	ha
MODE	WATER QUALITY DRIVEN	

	STAGE1	STAGE1	STAGE2	STAGE1	STAGE2	STAGE3
BASIN INFRASTRUCTURE	Basin_NG12	Basin_NG15	Basin_NG14	Basin_NG13	Basin_NG11	Basin_NG10
	Basin AB	Basin C	Basin D.1	Basin D.2	Basin E	Basin F
Basin modelling allocation (ha) - MODELLING ONLY	1.98	2.414	1.2082	1.1451	1.3337	0.974
Bio-retention Filter Surface Area (m2)	2200	1456	1200	779	1100	536
Wetland Plan Area (m2)	2384	2321	1527	1053	1212	808
Pond Plan Area (m2)	6326	7148	4876	3300	4118	3173
Pond Volume (m3)	13560	15827	9898	6290	6408	4665
Sediment Basin Surface Area (m2)	852	824	506	371	427	300
Residual Allocation Area (Ha)	0.892	1.3215	0.4479	0.6319	0.6907	0.5223
STORMWATER HARVESTING		STAGE(m)	TOTAL (m)			
STORMWATER HARVESTING MAIN		0	2075			
LOW FLOW DIVERSION (MAJOR)						
LOW FLOW DIVERSION MAIN		578	1500			

PROJECT STAGING PLAN
STAGE 4
SCALE: 1:3000

ISSUED FOR SSDA

SURVEY INFORMATION SURVEYED BY: LTSL DATUM: AHD ORIGIN OF LEVELS: PMZ5501, RL59.659				Client: HB&B Property Pty and ISPT Pty Ltd Architect / Surveyor: NETTLETONTRIBE Suite 2.01, 828 Pacific Highway, Gordon NSW 2072 Telephone: +61 2 9417 8400 Facsimile: +61 2 9417 8337 Email: email@hobson.com.au Web: www.henryandhymas.com.au				Project: BURRAH PARK ELIZABETH DRIVE, BADGERYS CREEK, NSW Title: PROJECT STAGING - STAGE 4				Drawn: L.Caha Designed: N.Wetzlar Checked: N.Wetzlar Approved: A.Francis Drawing number: 240518_DA_C174 Original issue date: 45413 Scale: @A1 1:3000 Revision: 02									
REVISION	AMENDMENT	DRAWN	DESIGNED	DATE	REVISION	AMENDMENT	DRAWN	DESIGNED	DATE	This drawing and design remains the property of Henry & Hymas and may not be copied in whole or in part without the prior written approval of Henry & Hymas.				DRAWING TO BE PRINTED IN COLOUR							

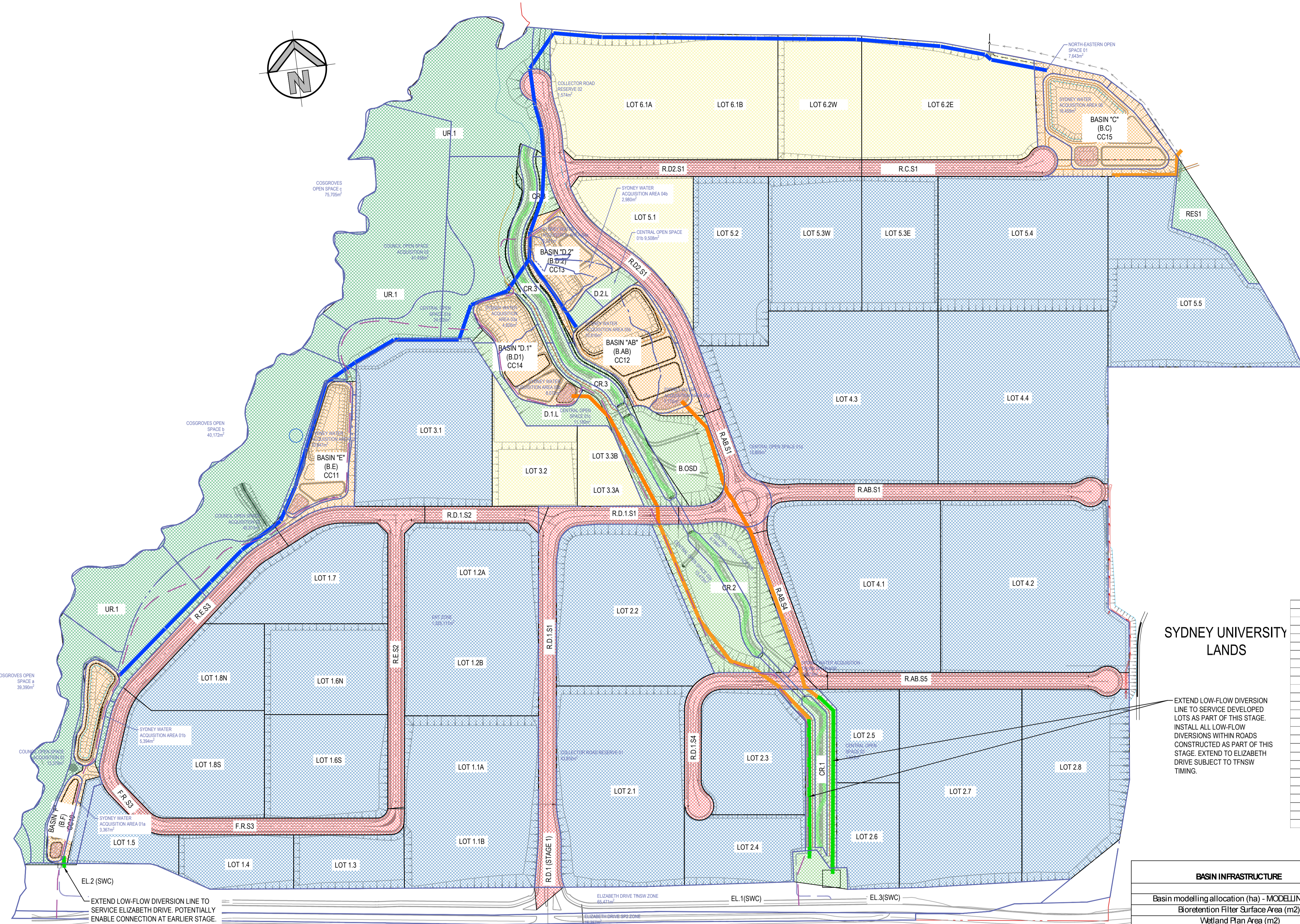


LEGEND

- CATCHMENT LINE
- PROPOSED BOUNDARY
- EXISTING SITE BOUNDARY
- STORMWATER HARVESTING MAIN THIS STAGE
- STORMWATER HARVESTING MAIN FORMER STAGE
- LOW FLOW DIVERSION LINE (MAJOR) THIS STAGE
- LOW FLOW DIVERSION LINE (MAJOR) FORMER STAGE
- ACTIVE TRANSPORT LINK
- ACQUISITIONS REFER 14020_SK034G BY NETTLETON TRIBE

TYPES

- LOT - DEVELOPED
- LANDSCAPE (UNDISTURBED)
- LANDSCAPE (PROPOSED)
- LANDSCAPE - FUTURE LOT
- ROAD
- BASIN AREA
- LANDSCAPE - FUTURE BASIN



SYDNEY UNIVERSITY LANDS

EXTEND LOW-FLOW DIVERSION LINE TO SERVICE DEVELOPED LOTS AS PART OF THIS STAGE. INSTALL ALL LOW-FLOW DIVERSIONS WITHIN ROADS CONSTRUCTED AS PART OF THIS STAGE. EXTEND TO ELIZABETH DRIVE SUBJECT TO TfNSW TIMING.

AREA SUMMARY		
STUDY AREA	163.60	ha
ENT - TOTAL	97.87	ha
POS - PRIVATE	15.48	ha
POS - PUBLIC	30.12	ha
FUTURE LOTS (POTENTIAL)	16.47	ha
REUSE RATES		
ENT - TOTAL	3.2	kl/day
POS - PRIVATE	3000	kl/year
POS - PUBLIC	3000	kl/year
FUTURE LOTS (POTENTIAL)	6000	kl/year
REUSE DEMAND		
ENT - TOTAL	313.2	kl/day
POS - Private	46451.49	kl/year
POS - PUBLIC	90368.3	kl/year
FUTURE LOTS	98817.0	kl/year
IRRIGATION TOTAL	235636.8	kl/year
PROPOSED REUSE DEMAND		
ENT - TOTAL	313.2	kl/day
POS - Private	46451.49	kl/year
POS - PUBLIC	90368.28	kl/year
IRRIGATION OF FUTURE LOTS	98817.00	kl/year
IRRIGATION TOTAL	235636.77	kl/year
FUTURE LOT IRRIGATION AREA @ 3000 kl/year	32.94	ha
FUTURE LOT IRRIGATION AREA @ 6000 kl/year	16.47	ha
MODE	WATER QUALITY DRIVEN	

	STAGE1	STAGE1	STAGE2	STAGE1	STAGE2	STAGE3
BASIN INFRASTRUCTURE	Basin_NG12	Basin_NG15	Basin_NG14	Basin_NG13	Basin_NG11	Basin_NG10
	Basin AB	Basin C	Basin D.1	Basin D.2	Basin E	Basin F
Basin modelling allocation (ha) - MODELLING ONLY	1.98	2.414	1.2082	1.1451	1.3337	0.974
Bioretention Filter Surface Area (m2)	2200	1456	1200	779	1100	536
Wetland Plan Area (m2)	2384	2321	1527	1053	1212	808
Pond Plan Area (m2)	6326	7148	4876	3300	4118	3173
Pond Volume (m3)	13560	15827	9898	6290	6408	4665
Sediment Basin Surface Area (m2)	852	824	506	371	427	300
Residual Allocation Area (Ha)	0.892	1.3215	0.4479	0.6319	0.6907	0.5223
STORMWATER HARVESTING		STAGE(m)	TOTAL (m)			
STORMWATER HARVESTING MAIN		0	2075			
LOW FLOW DIVERSION (MAJOR)						
LOW FLOW DIVERSION MAIN		463	1963			

PROJECT STAGING PLAN
STAGE 5
SCALE: 1:3000

ISSUED FOR SSDA

SURVEY INFORMATION				Client: HB&B Property Pty and ISPT Pty Ltd				Suite 2.01 828 Pacific Highway Gordon NSW 2072				Telephone +61 2 9417 8400 Facsimile +61 2 9417 8337 Email email@hbonsult.com.au Web www.henryandhymas.com.au				Project BURRAH PARK ELIZABETH DRIVE, BADGERYS CREEK, NSW				Drawn L.Caha				Designed N.Wetzlar				Original issue date 45413							
SURVEYED BY: LTSL				Architect / Surveyor NETTLETONTRIBE												Checked N.Wetzlar				Approved A.Francis				Scale @A1 1:3000											
DATUM: AHD				This drawing and design remains the property of Henry & Hymas and may not be copied in whole or in part without the prior written approval of Henry & Hymas.				DRAWING TO BE PRINTED IN COLOUR				henry&hymas				Drawing number 240518_DA_C175				Revision 02															
ORIGIN OF LEVELS: PMZ5501, RL59.659				REVISION				DRAWN				DESIGNED				DATE				AMENDMENT				DRAWN				DESIGNED				DATE			
02				ISSUED FOR STATE SIGNIFICANT DEVELOPMENT APPLICATION (SSDA)				LC				NW				11.12.2025																			
01				ISSUED FOR STATE SIGNIFICANT DEVELOPMENT APPLICATION (SSDA)				LC				NW				04.12.2025																			

