



BURRAH PARK

CONNECTING WITH COUNTRY FRAMEWORK REPORT

FRAMEWORK REPORT | JULY 2024



Aboriginal and Torres Strait Islander peoples should be aware that this document may contain voices/images/ names of people who have passed away.

We acknowledge Dharug Country, the Cultural Landscapes that we are working upon, and the Dharug people and their ongoing connection to culture, lands and waters and their valuable contribution to the community. We recognise and acknowledge the surrounding clans of the Aerotropolis to the North, South, East and West whilst honouring and celebrating their Elders past, present and emerging.

We acknowledge all First Nations people and their ongoing connection to culture, lands and waters and their valuable contribution to the community. We recognise, acknowledge, and extend our respect to many others who have custodial obligations for Country and have been connected to Dharug Country for many generations.



Yerrabingin is an Aboriginal owned design studio. At the core of our work is custodianship and care for Country. Our expertise encompasses Designing with Country, landscape architecture and urban design.

We are recognised for our collaborative design approach, bringing together cultural knowledge and sustainable design solutions. We walk together to amplify the powerful language of Country for the betterment of our collective future.

We are guided by the inspiration of Country, the stories and knowledge a place contains and gifts us. We acknowledge its contribution to well-being both mental and physical, providing a refuge and safe place to learn and share.

Our Vision is that sensing and caring for Country is something that transcends cultural differences and highlights the many values that are similar across the cultures of our contemporary communities. Supporting a socially inclusive, resilient, and innovative community based on, honouring the wisdom and Kinship of all cultures, captured through the lens of custodianship.



Walk on Country | Yerrabingin

EXECUTIVE SUMMARY

This document has been created by Yerrabingin for Burrah Park. It builds on the findings of the Contextual Analysis, Collaborative Design workshops, our Recognise Country Strategy response and presents the integration of our design recommendations into the work of the Design Team, across Landscape, Architecture and Planning.

The document has been developed by Yerrabingin following our Collaborative Design process, in partnership with HB&B Property Pty Ltd, ISPT Pty Ltd, NettletonTribe, Geoscapes, Urbis and Aboriginal community members through the Walk on Country and Collaborative Workshops and meetings. The purpose of this document is to share the findings and design recommendations from our collaborative design process.

The opening section provides an introduction to how we understand Country and what Country means to us. We then introduce the Connecting with Country Framework created by the Government Architect New South Wales and the outcomes that can be used to guide this project.

The second section - Contextual Analysis - provides a recap of the scope and intent of the Burrah Park project. We then introduce Dharug Country and explore

the context of the site within the wider Cumberland Plain cultural landscape, including mapping important values across the site and presenting high level cultural values are collected as part of early consultation on the Aerotropolis region.

The third section - Collaborative Design Approach - firstly recounts our design method - Wanggani Dhayar - and then shares a summary of each step in the process, including the Walk on Country, the Design Jam, and targeted design workshops. For each engagement, we include a description of the engagement and a summary of the findings. Two feedback sessions are planned for June 2024 to complete the Collaborative Design process.

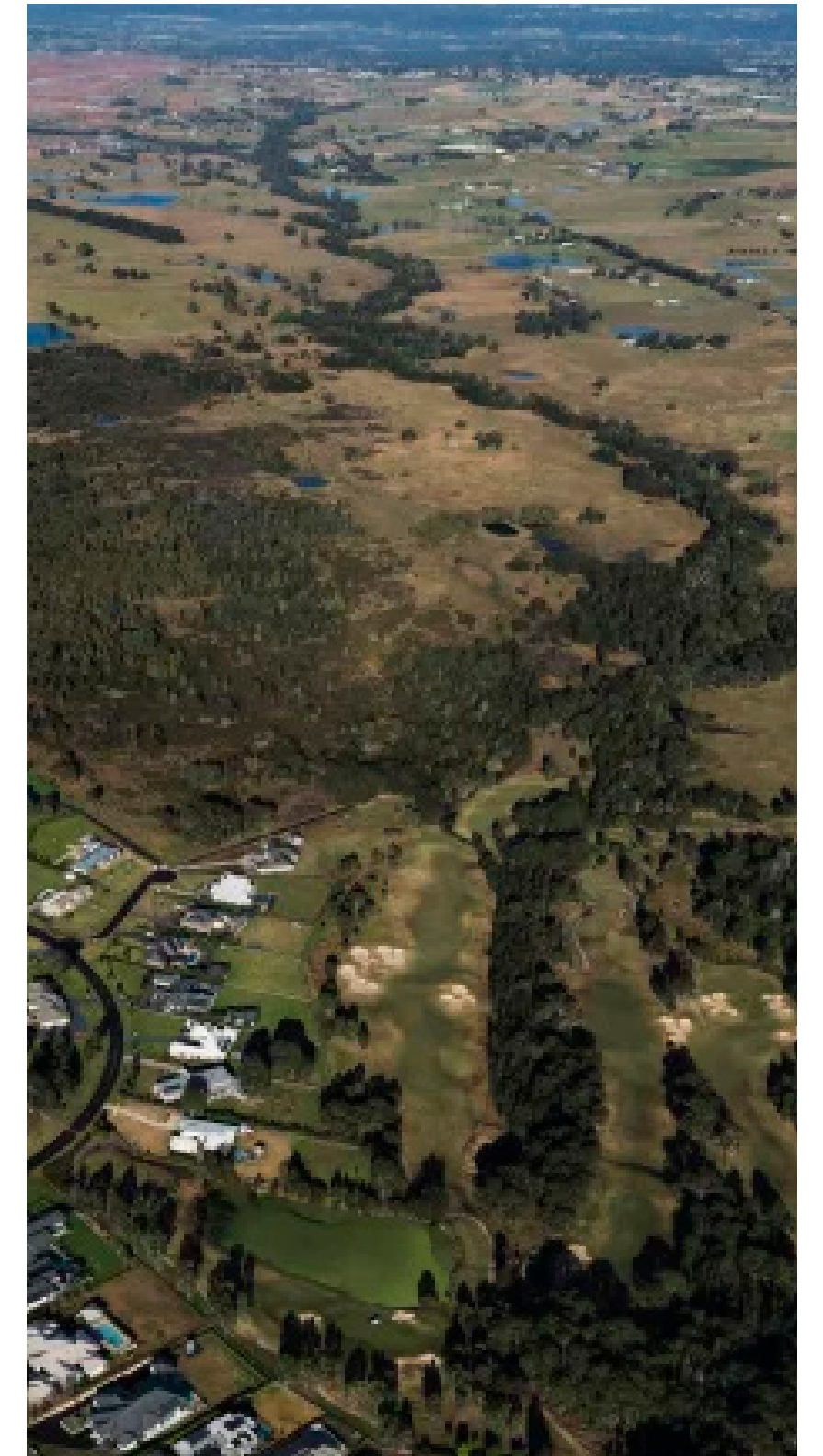
In the fourth section, our Vision for Burrah Park takes shape. We explore the Community Driven Design Principles developed following the Collaborative Design sessions - Connect to Dharug Country, Designing for Kin, Enterprise Opportunities, and Cultural Practice. We discuss how each Principle could be activated at the site.

In the fifth section - Recognise Country Guidelines - we share our response to the NSW Government Recognise Country: Guidelines for Development in the Aerotropolis.

To address the guidelines, we analyse the Elements of Country alongside the Guidelines and develop design considerations for each Element. We then present the design considerations for each Element in a set of Spatial Typologies across the site.

The sixth section explores how the Design Team have integrated the design considerations presented in the fifth section into the Masterplan, Landscape and Architectural designs.

The final section explores ongoing opportunities for Connecting with Country at Burrah Park and the legacy of this project for Dharug Country and the community of Western Sydney.



Badgerys Creek | James Brickwood

TABLE OF CONTENTS

CONNECTING WITH COUNTRY

Introduction to Country 7
Beginning with Country

Connecting with Country 8
Beginning with Country

Connecting with Country Framework 9
Designing with Country
Outcomes for Country

CONTEXTUAL ANALYSIS

Project Overview 12

Contextual analysis 13
Aerotropolis - A Connected System
Wianamatta / South Creek is the heart of the Aerotropolis

Connecting with Country, Caring for Country 15
Design Narratives

COLLABORATIVE DESIGN APPROACH

Collaborative Design Approach 17
Community Engagement Overview

Design Process 18
Wanggani Dhayar Process - Listen to Country

Design Jam 19
Collaborative Design with Community - August 30th 2021

Targeted Workshop 21
Northern Gateway Use of Language, Naming and Wayfinding workshop

Walk on Country 22
June 22nd 2022

Aerotropolis Workshop and lunch 23
August 22nd 2022

RAPs Feedback Session 24
June 12th 2024

Dharug Women Feedback Session 25
June 25th 2024

A VISION FOR BURRAH PARK

Community Driven Design Principles 28
Connect to Dharug Country
Designing for Kin
Enterprise Opportunities
Cultural Practices

RECOGNISE COUNTRY GUIDELINES

Recognising Country Strategy 34
Aerotropolis Development Guidelines

Elements of Country 35
Exploring Burrah Park

Designing with the Elements of Country 36
Move with Country
Non-Human Kin Country
Water Country
Deep Country
Sky Country
Wind Country

TPOLOGY APPLICATION

Spatial Typologies 43
Mapped at Burrah Park

Riparian 44
Overview
Visual Application

Parklands 46
Overview
Visual Application

Streetscape 48
Overview
Visual Application

Nodes 50
Overview
Visual Application

Lots 52
Overview
Visual Application

DESIGN TEAM APPLICATION

Landscape Approach 55

Architecture Approach 56

NEXT STEPS

Ongoing Opportunities 59

APPENDIX

DOCUMENT NAME	REV	DATE
YB_CWC_FR_0153_REVA	REV A	2024 07 18



CONNECTING WITH COUNTRY

INTRODUCTION TO COUNTRY

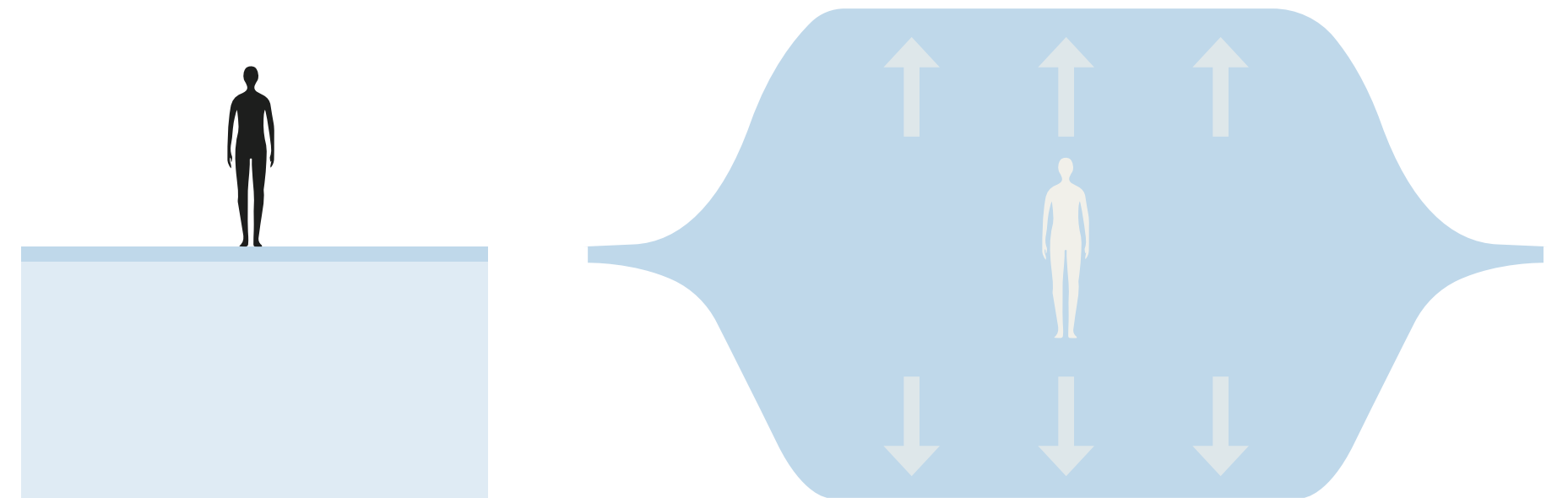
Beginning with Country

Country is our mother, our teacher, our library and our Kin, it sustains, inspires and surrounds us. The experience of Country is both individual and collective, both new and familiar. From her we learn, share and flourish. Continuing to care for Country is central to our being and our identity.’ Christian Hampson, Yerrabingin

Country reaches into and across the earth and into the sky. The unique and distinctive elements of Country are connected, and open to everyone. They are the connective tissue, the interstices, the flow between Water, Earth, Sky, our Non-Human Kin and ourselves. In this way, we are part of the system of Country and have a responsibility to future generations. Our actions must always be Country-positive.

We inhabit and are inhabited by Country. To inhabit and connect with Country is to be grounded in the landscape and to practice the cultural knowledge stored within it. This encourages physical and emotional well-being for people and Country.

The innate symbiosis of being connected to Country moves us into being eco or Country centric rather than being human centric. This function has been a long component of Aboriginal people’s ideology. It is a cultural value that places humans within the ecological and landscape system, not as dominators but as caretakers and custodians. This function requires constant interaction and observation, being tuned to reactive requirements and response.



We Inhabit and are Inhabited by Country | Yerrabingin

CONNECTING WITH COUNTRY

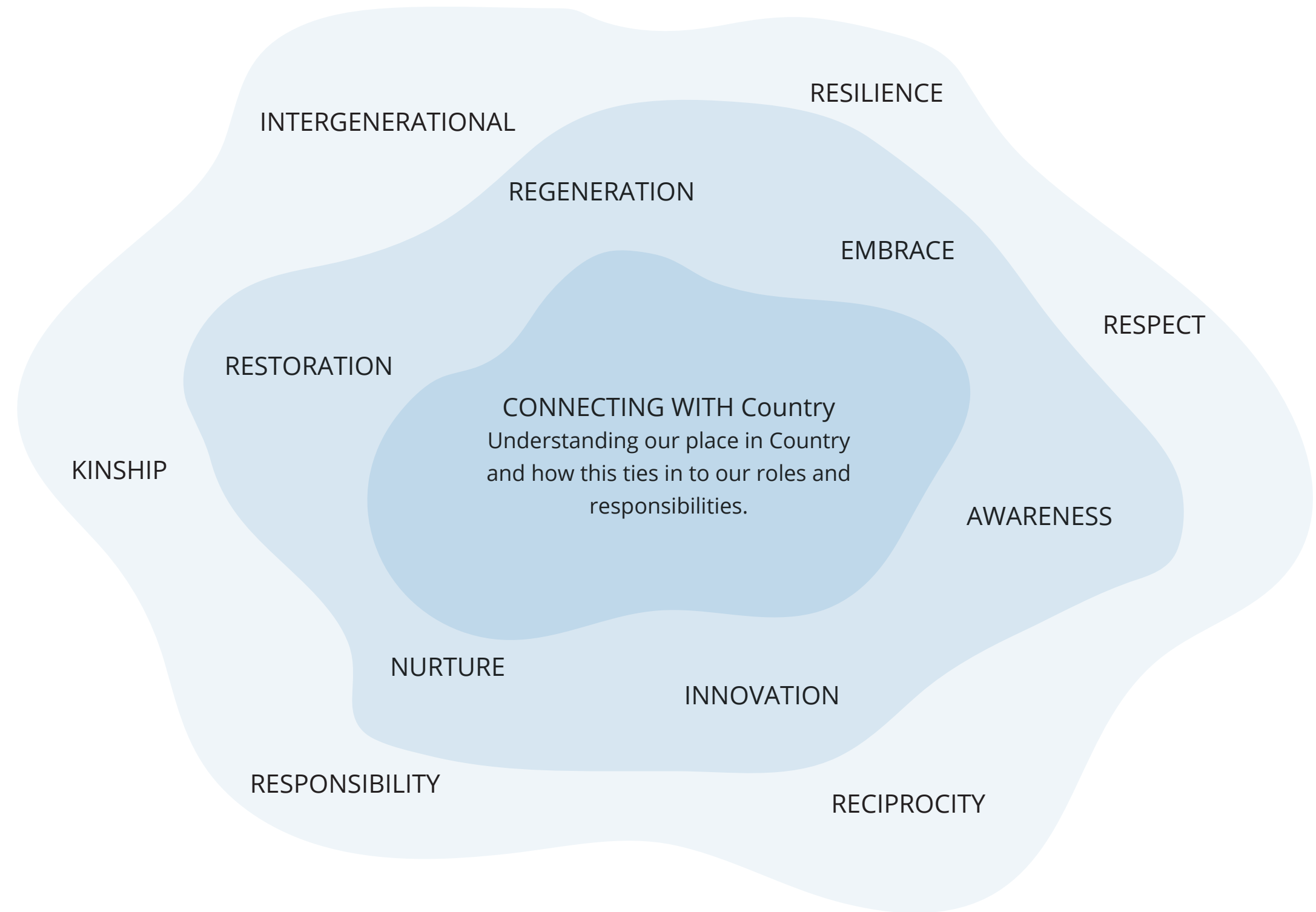
Beginning with Country

Being connected to Country transcends language and culture, it is an interlaced system of action, emotion and experience. It highlights the many values that are similar across the cultures of our contemporary communities.

Caring for and becoming a Custodian of Country means forming a strong relationship with Country based on respect, obligation and reciprocation. In order to create and maintain interconnection, it is imperative that Country contains endemic food and medicinal species, cultural resources, as well as keystone species and their habitats. These interdependent systems and relationships provide a framework for holistic design, Country-focused environmental policies and land management practices that are adaptive and regenerative.

Importantly, including First Nations knowledge of land and culture at the onset of a project leads to a design response that is derived from knowledge of landscape variables and bio-cultural knowledge.

Connecting with Country supports a socially inclusive, resilient and innovative community that cherishes the wisdom and Kinship of all cultures, captured through the lens of custodianship, creating well-being for all.



Connecting with Country | Yerrabingin

CONNECTING WITH COUNTRY FRAMEWORK

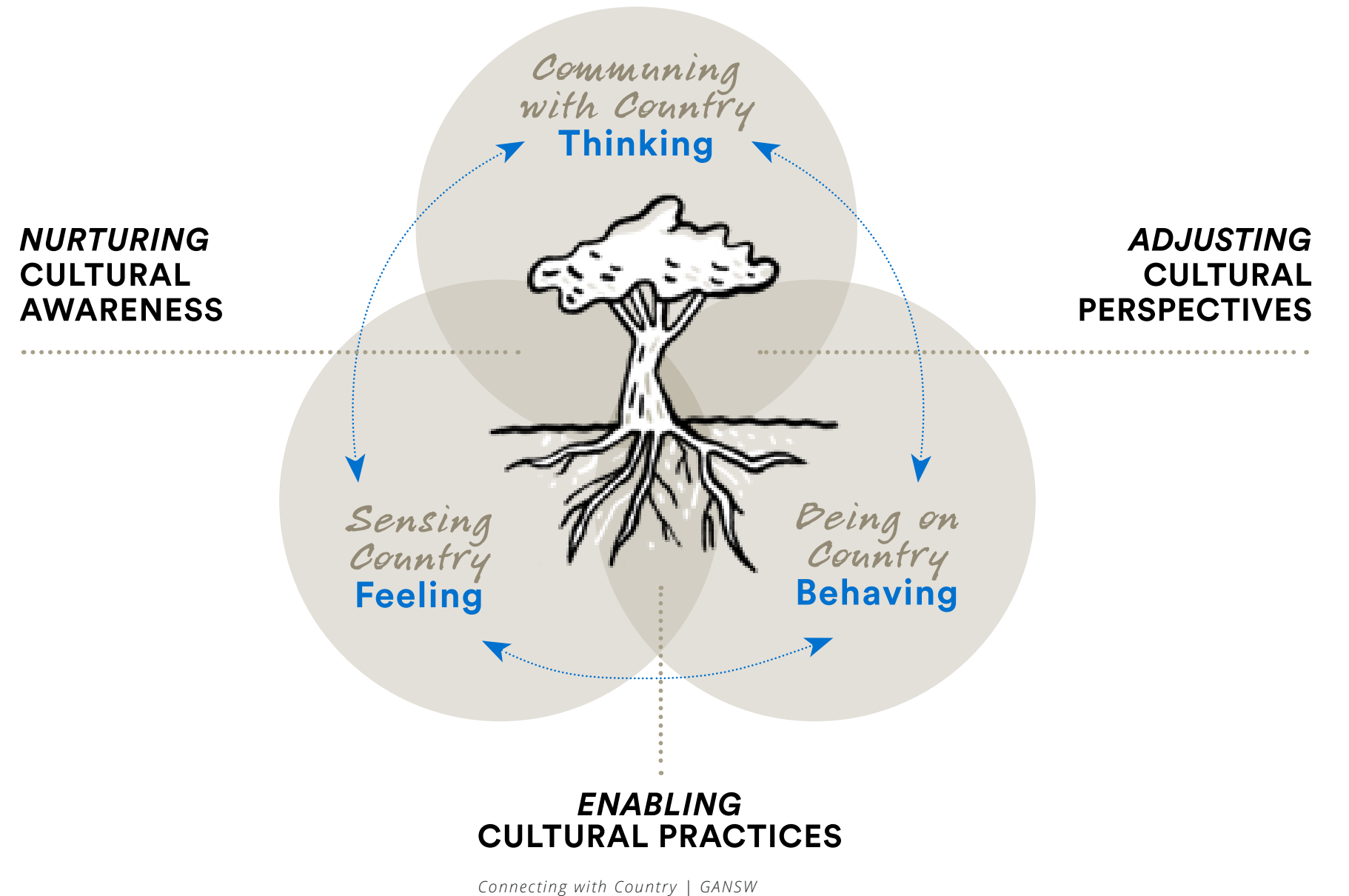
Designing with Country

Country is our mother, our teacher, our library, our Kin it sustains inspires and surrounds us. The experience of Country is both individual and collective, both new and familiar. From her we learn, share and flourish, continuing to care for Country is central to our being, our identity. Country is a responsibility, not a right and is there for all who respect and cherish her. Today we may not always be able to see Country instantly, but if we call to her, we can always sense her and again feel her embrace.

Designing with Country Utilising the NSWGA Elements of Designing with Country will ensure the environmental and social well-being of the site is addressed a way that will provide an enduring legacy for the place and community. Nature is Country. Caring for Country must guide design interventions. Preservation, restoration and remembering - not replicating the natural landscape and allowing that to inform all future occupation. Design should support and provide for the local community. Social initiatives must be consciously embedded in the outcomes for the project. All design should appreciate the local vernacular. Draw upon and be inspired by Country, what has come before, what is required to sustain the future.

"If people and their needs are at the 'centre' of design considerations, the landscape and nature and reduced to second-order priorities. If design and planning processes consider natural systems that include people, animals, resources and plants equally - similar to an Aboriginal world view - this could make a significant contribution to a more sustainable future."

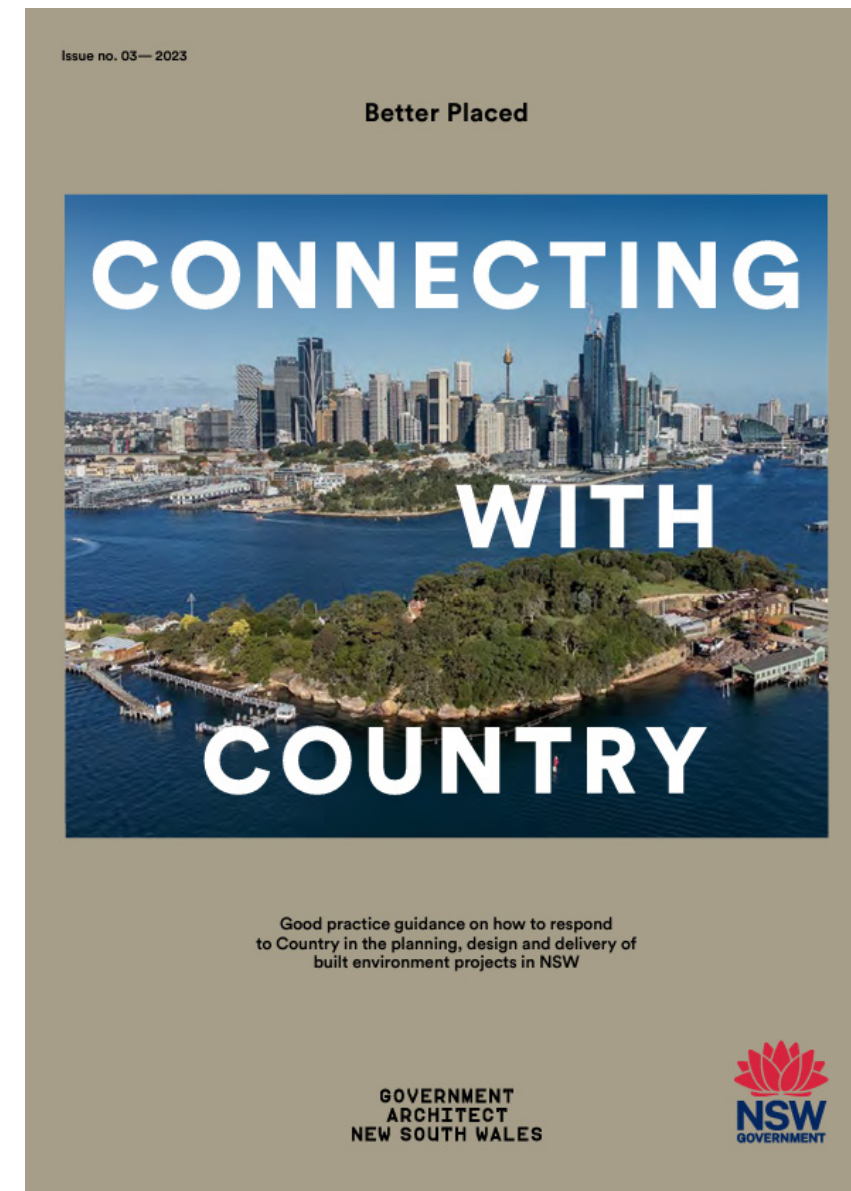
- GANSW, Connecting with Country Framework, 2023, p.32



CONNECTING WITH COUNTRY FRAMEWORK

Outcomes for Country

The GANSW provides project teams with five outcomes of success through a Country-centred approach. These outcomes should be revisited continuously throughout the design process, reviewed at project completion and as ongoing maintenance and objectives for the project.



Connecting with Country | GANSW

1. HEALTHY COUNTRY

- Healthy ecology
- Physical form of Country remains recognisable and restored where possible

2. HEALTHY COMMUNITY

- Strong cultural identity, connected to place and community
- Cultural Safety
- Relief for Aboriginal communities who are fatigued by the workload imposed on them by project teams seeking their advice on Country
- Training (Spatial design skills for community, financial support including scholarships for built environment)
- Employment Opportunities

3. PROTECTING ABORIGINAL CULTURAL HERITAGE

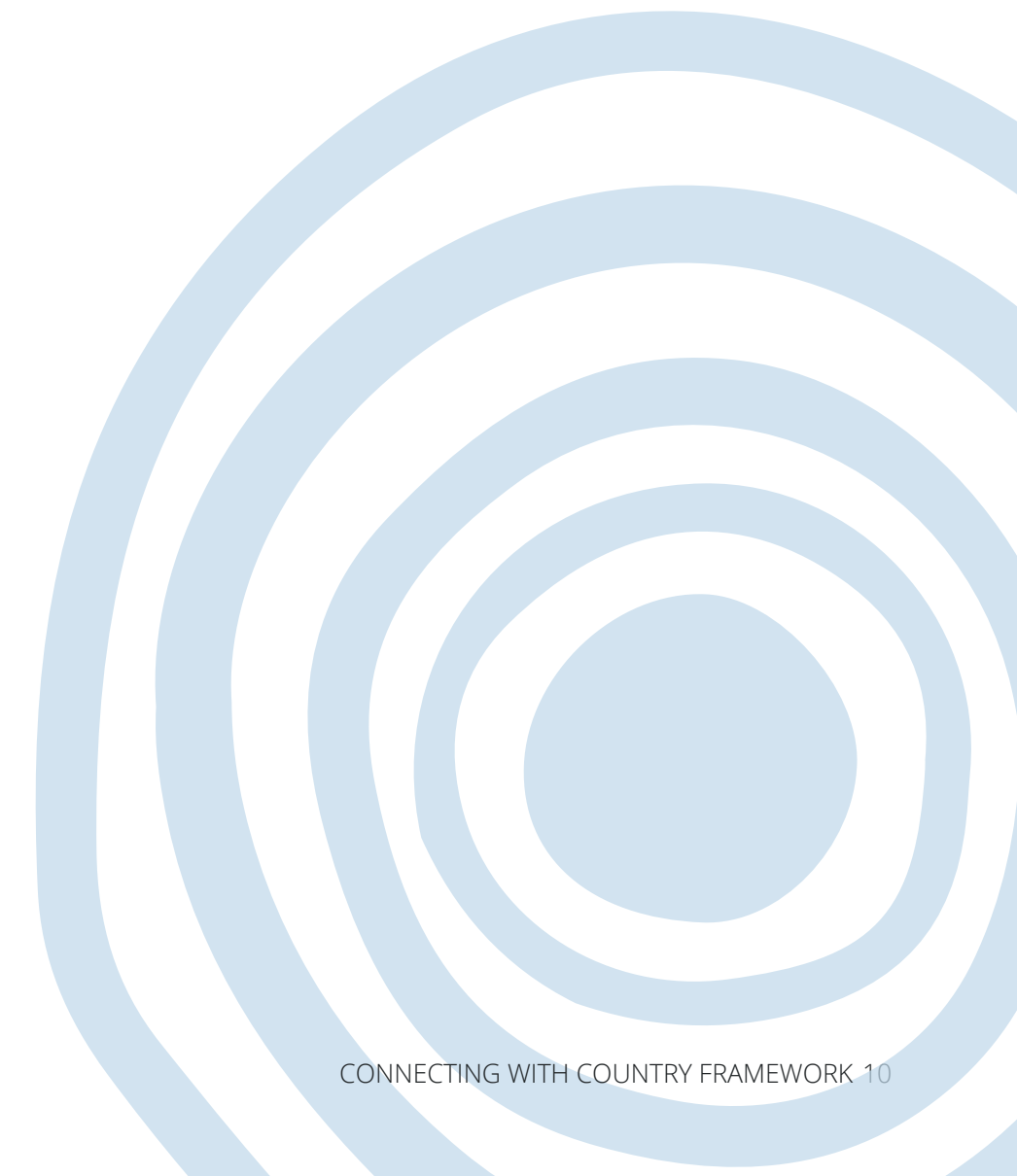
- Aboriginal cultural advisers guiding project teams and clients to better connect with Aboriginal community
- Project teams and processes for project delivery respect ICIP
- Access to Country is provided
- Aboriginal language and place names are used

4. CULTURAL COMPETENCY

- Ongoing cultural awareness training develops skills and competency in delivering Country-centred design projects

5. BETTER PLACES

- Planning and design projects create places that are connected with Country
- Planning and design outcomes support living cultural practises
- Original landscapes are repaired or restored





CONTEXTUAL ANALYSIS

PROJECT OVERVIEW

Burrah Park is on freshwater Country, with Cosgroves Creek to the West and Badgerys Creek to the East, both connecting to the broader Mother Creek (Wianamatta) system.

The site has an area of approximately 280 hectares and is partially divided by the M12 Motorway and Sydney Metro. The land has previously been used for agricultural purposes and is now largely cleared of vegetation; being mostly grass and scattered tree growth. There are also several man-made waterbodies through the centre and southern parts of the site.

There is a great opportunity with this redevelopment for a regenerative outcome for Country. Through both the landscape, built-form and broader planning there is opportunity to create an engaging experience of Country that prioritises the overall health of the land.



Site Photos | Yerrabingin



Site Map | Nearmaps

CONTEXTUAL ANALYSIS

Aerotropolis - A Connected System

Country is interconnected and interdependent across vast distances and scales. Country is sky, water, earth, plants, animals, people, stories, languages, songs and memories. When one of these parts of Country is changed, other parts can be altered or affected.

We need to be aware of the interconnected and interdependent nature of Country when proposing to make changes to Country. For example, changing the flow or direction of a watercourse will impact the waterway downstream; adding or removing trees and plants will impact the soil, water, micro climate along with other plants and animals in the direct and wider area; this is also the case with vagrant, migratory and climate refuge species; introducing waste and pollution to an area will impact the health of the waterways, sky, soil, plants, animals and people; changing the environmental mass from predominately natural systems to heavily anthropogenic landscape will impact the absorption and flows of rainwater; the environmental variables, including retention of heat in the landscape.

The health and well-being of water in this part of Country is highly significant to the Dharug people. By remaining aware of the interconnected nature of Country, we can make the right decisions to improve the health of Country. What we know as western Sydney is Dharug, Dharawal and Gundungurra Country. This Country is formed of low rolling hills and plains, between the mountains to the west and the rocky gorges and sandy hills towards the coast. Waterways traverse this Country, spreading from large Rivers and branching into smaller and smaller streams, supporting and nourishing Country. To the west, at the foot of the mountains, is the Hawkesbury-Nepean River network, to the east is the Georges River network.



CONTEXTUAL ANALYSIS

Wianamatta / South Creek is the heart of the Aerotropolis

Running through the centre of the Cumberland Plain area from Windsor is Wianamatta Creek and waterways, meaning Mother Place in Dharug language. Wianamatta Creek flows for about 80 kilometres, carrying water and life through some of the flattest, driest and hottest Country in the Sydney region. The total catchment area of Wianamatta and the tributaries is 62,400 hectares. One branch of the waterway travels south through to the suburb of Eastern Creek, next to Prospect Reservoir.

Another branch, further to the west reaches south and west towards Penrith, across the Aerotropolis site and south towards Campbelltown. To ensure we look after and improve the health of Country, we need to remember what we do in one place in this 62,400 hectare area, and the 80 kilometre waterway, will have affects across the area and beyond, and that these changes will continue into the future.

Development in the region is a chance to create positive changes for Country and for people; to design a place of the future, where the environment and people are connected and equal and have the ability to exist as one; to increase biodiversity and habitats for threatened species; to reduce pollution; to improve soil health; to

improve the health of the waterways; to increase access to Country for First Nations people and to introduce non-First Nations people to Country, creating relationships of care and custodianship; to design and build using local materials that are suitable for the local environmental conditions; to create long term solutions to care for Country.

“The Aboriginal way is only take what you need, you always ensure there was plenty for all, even to the point of cutting the top off a yam, take the bottom, eat that, and plant that one back in there, ensuring there’s something there for people for later. It’s sensible thinking always, long term, always long term.”

- Leanne Tobin. If we care for Country, Country will care for us.



South Creek in Western Sydney | Nature Driven Urbanism

CONNECTING WITH COUNTRY, CARING FOR COUNTRY

Design Narratives

Preliminary cultural mapping was completed with community members as part of the Western Sydney Aerotropolis planning process.

The high-level cultural values that were shared by community are:

- Being on Country: it is important to be on Country to talk about and see archaeological sites and landscapes. Feelings are an important aspect of this site.
- Conservation of modified trees: carved or scarred
- Wildlife corridors: Retention of Cumberland Plain Woodland and remnant vegetation.
- Conservation of significant objects and places: (such as grinding grooves, ridge lines and sandstone areas).
- Intergenerational equity: accumulative impact.
- Connecting waterways and connection between Dharug people and Country.

It is important to note that: 'the stakeholders were initially reserved about placing their notes on the tree diagram'.

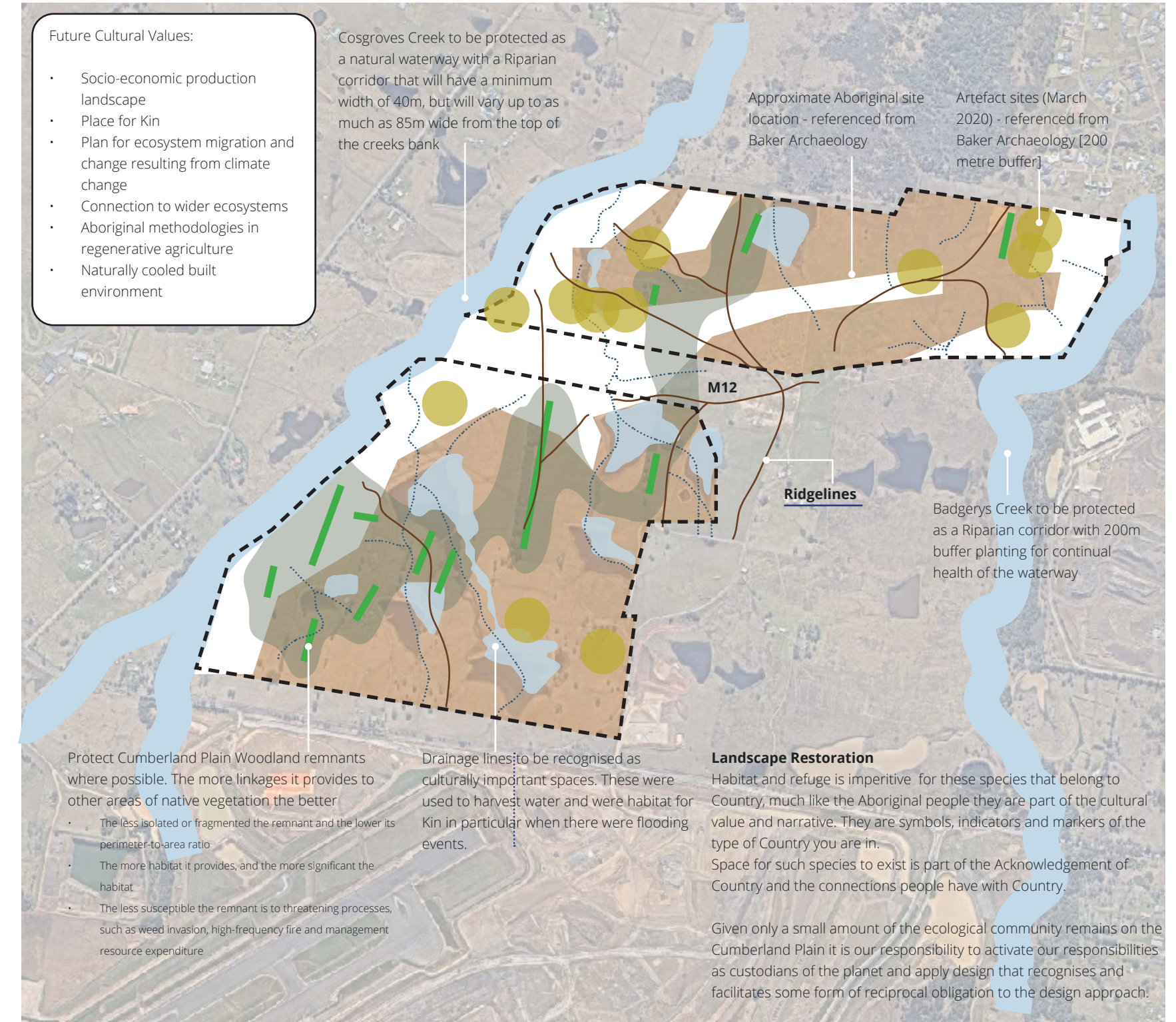
All of the stakeholders reiterated that the whole tree is in danger – a consensus conclusion that ties back into the theme of cumulative impact across the Cumberland

Plain and how the progressive development of Western Sydney has removed all but a small portion of the original environment of the Cumberland Plain. While the stakeholders included some high-level values on the cultural values tree, the general consensus was that they needed to go out from the meeting and talk to elders and members of the communities before providing any more cultural values input. All the stakeholders emphasised the need to get on Country to take the cultural values mapping to the next stage of detail needed for master planning and development.'

Further secondary research for the Aerotropolis region identified the following narratives:

- The land as a living body, and the waterways as veins.
- The region as a shared zone, used by different clans, Dharug, Gundungarra, Dharawal.
- The region as a place of resistance, where the frontier wars were fought during the late 1700s into the early 1800s.
- The wider cultural landscape includes significant sites of Nepean River, Cubbin Butcha and Bents Basin.

The map to the right will continue to develop as the project continues through additional community consultation, design formulation and project delivery.





COLLABORATIVE DESIGN APPROACH

COLLABORATIVE DESIGN APPROACH

Community Engagement Overview

This section of the report outlines the community engagement process and outcomes synthesised by Yerrabingin for the delivery of an authentic and meaningful design approach for Burrah Park. It recounts the collaborative design process between the previous project team, and the current (Urbis, Geoscapes, Nettleton Tribe), Yerrabingin, and members of the local First Nations community. It explains the purpose of the design methodology and how the outcomes for creative and culturally sensitive placemaking were reached.

The key attribute Yerrabingin offers is a focus on empathetic design solutions. Throughout the process, we engaged with different partners, connecting innovation and ideation with the wisdom of our cultures.

Yerrabingin engages with people we can learn from and create alongside, resulting in First Nations narratives that reflect the Country the project takes place on. Unlike traditional consultation or engagement, Yerrabingin ensures First Nations peoples are active co-designers of the project, fostering the collective voice of the community.

For the redevelopment of Burrah Park, ideation was explored through the lens of design thinking and using collaborative events such as a Walk on Country, Design Jams and Community Feedback Sessions.

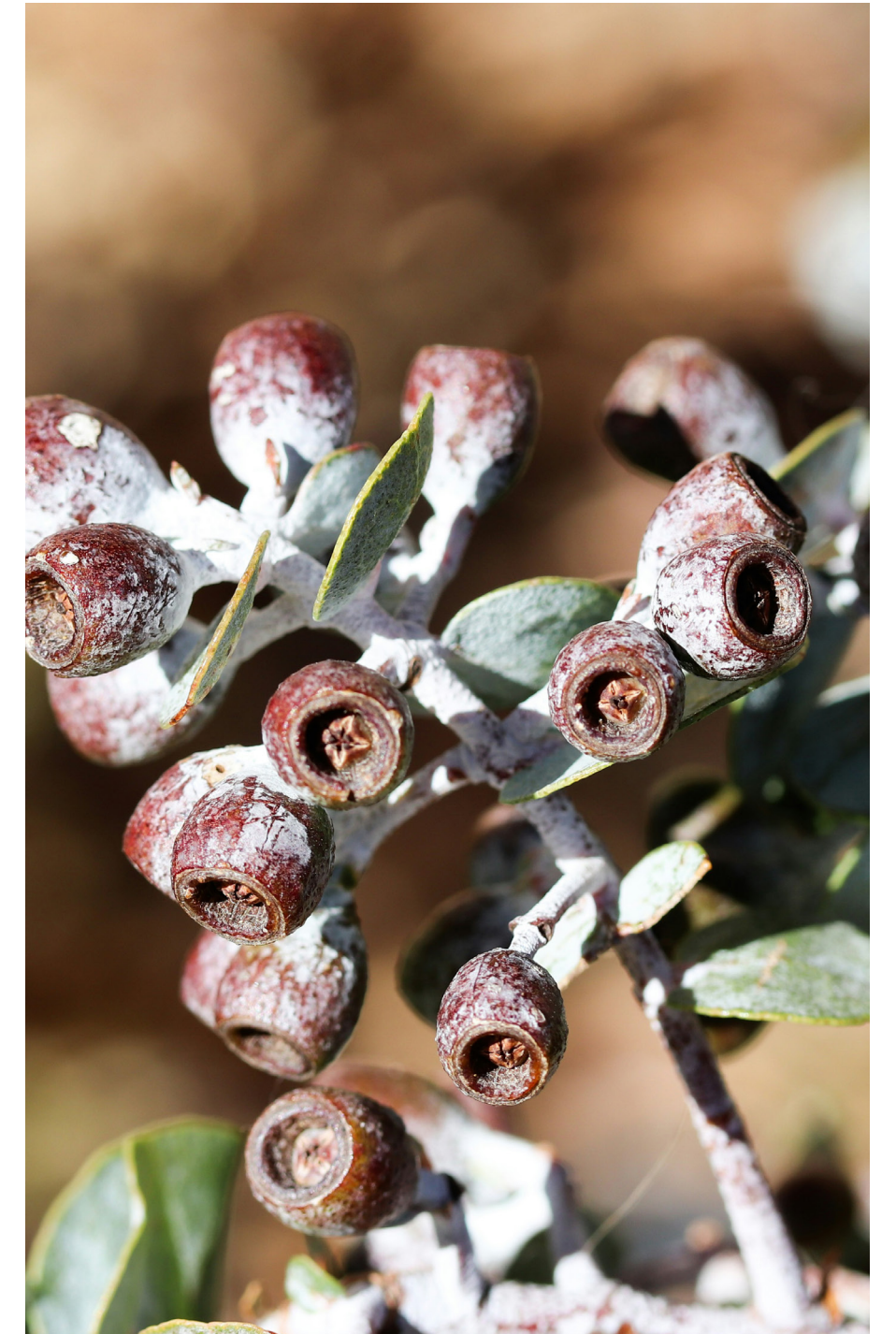
Although not all discussion could occur on site, the cultural landscape and context of Dharug Country was maintained at the front mind during community engagement. The empathetic design approach ensured that First Nations cultures remain at the core and foundation of the project. The collaboration with the First Nations community members and multidisciplinary design team brought a diversity of ideas and knowledge to the design thinking process. The community engagement identified key insights, recommendations and areas of opportunity for the project.

Three key themes emerged from this collaborative approach. These themes seek to provide a basis for cultural care, celebration and well-being in Burrah Park.

- Connect to Dharug Country
- Designing for Kin
- Enterprise Opportunities
- Cultural Practice

Workshops

- Design Jam - RAP Workshop 30th August 2021
- Northern Gateway and Language Use - February 9th 2022
- Walk on Country - June 22nd 2022
- Aerotropolis Workshop and Lunch - August 22nd 2022
- RAPS Feedback Session - June 12th 2024
- Dharug Women Feedback Session - June 25th 2024



Eucalyptus | Unsplash

DESIGN PROCESS

Wanggani Dhayar Process - Listen to Country

The Wanggani Dhayar process is fluid, with reiteration and organic formation of the design throughout.

The graphic to the right represents the stages of the Wanggani Dhayar design process, including framing the design, identifying the audience/users, the Design Jam, logic and assumption testing, cultural checking, and sharing the solution through the form of a pitch.

All Design Jams to date have occurred on site, ensuring the cultural context was maintained and at the front of mind during the Design Jam. The Design Jam produced several rapid prototypes for broader testing. These are tested by cultural protocols and project principles developed in the workshop.

We adopt an empathetic design approach, commencing at the start of the design process, ensuring that First Nations culture is at the core and foundation of the project. The following sections of the report outline key insights and outcomes from the process to date and the recommendations for the project.



“When people talk about Country it is spoken of like a person: we speak to Country, we sing to Country, we worry about Country, and we long for Country.”

— Connection to Country, Common Ground First Nations, GANSW, Connecting with Country Framework, 2023, p.21

DESIGN JAM

Collaborative Design with Community - August 30th 2021

The Collaborative Design Jam workshop was with the Registered Aboriginal Parties (RAPs) that RSVP'd for a session to discuss the progress of the project. We discussed the importance of the riparian corridor and the design development for both the landscape and built-form.

RAP Workshop 30/08/2021

POSITIVES

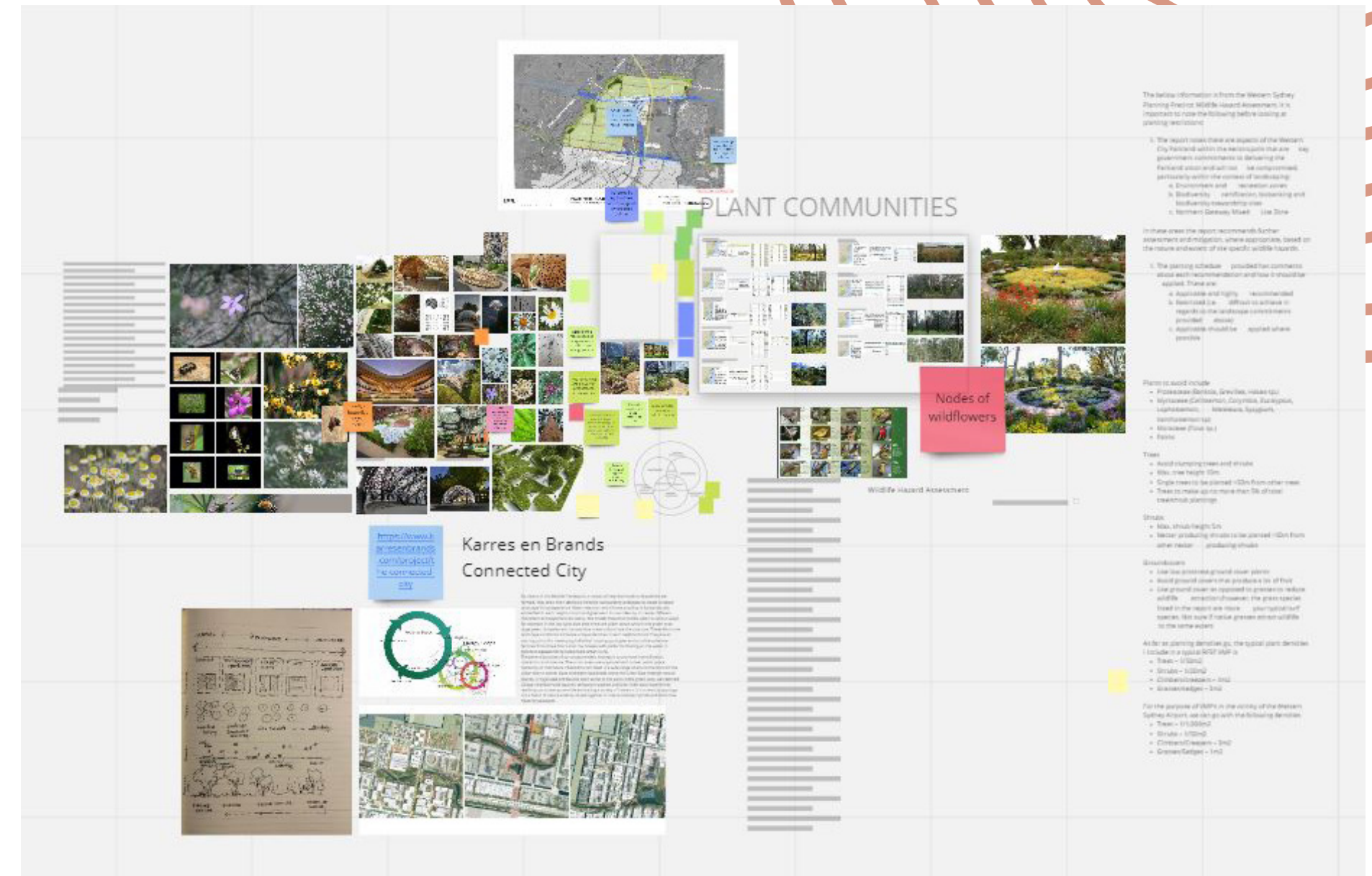
- "What I've seen so far is terrific!" - Jamie
- Having Aboriginal Managers / ranges on the site has an incredible educational benefit
- Having the opportunity to create an enterprise
- The group want to be involved throughout the process, involvement in all workshops and engagement sessions

NEGATIVES

- 'Riparian corridor' Sydney Water look at sewage lines.
- More complex than that, what else will other people need that riparian corridor for? This needs to be considered

SUGGESTIONS

- Look into historic and future flooding events, don't want things 'washed away'
- Management between councils
- Signage for educational purpose
- Artefacts to go back on Country where they belong.
- Care/Control agreements (RAPs)
- Cumberland Plain has great variety of plant species
- Groundcovers used for erosion control
- Aunty Glenda is familiar with edible plant species - would be good to get her involved in the species selection
- "Hope this project is the start of more."
- Naturalising the whole Creek not leaving half as a concrete channel.
- Naming streets in language (would need to be co-designed with community)
- The roundabouts could be used as focal points in the wayfinding strategy to assist in sharing the narrative of the site.



Online Collaborative Workshop | Yerrabingin

DESIGN JAM

Collaborative Design with Community - August 30th 2021

QUESTIONS

- How is the brought in natives going to affect endemic/ endangered species? Have you had any strategic/ planting relating to the species? What's our plan on this? Answer: mimic endemic systems, creating / biodiversity, increased water quality, reducing heat island effect, greater water quality, pollinator attractors,
- Bird strike awareness
- What species of trees are they prohibiting?
- Will prohibited species that are there currently be removed?
- Will Aboriginal people have access to this area?
- What are the plans for education? How are you going to educate people on the area? Answer: Experiencing the space is the educational aspect, eating the native ingredients, potential tour opportunity on site, sharing diversity of technology and knowledge
- Will there be signage interpretation? QR codes sharing species / history? – linking to education
- What about the intangible aspects of our history? Answer: Concept masterplan level, any specific concepts will be collaboratively designed.
- Is there a keeping place for artefacts? What was found on site?
- Has there been any thought on naming streets in language? Roundabouts could be key points on site.
- Is there an opportunity for some of the urban design artists to develop some of the structures etc?
- Is there an opportunity to create jobs for mob/ management site - rangers/management role for community?
- Has there been an Aboriginal heritage assessment?
- Plant species and trees from different Country - any strategy planting? not to affect endemic species
- How can Aboriginal people have access to area?
- Down water and up water streams - artefacts along the River. What seen so far is awesome.
- Are there plans on educating the wider community?
- Functional signage /interpretation
- How to incorporate intangible elements of culture e.g., stories?
- Is there a keeping place for artefacts that will be found?
- Is there opportunity for urban designers to work with community on design building/elements?

KEY IDEAS

- Interpretation throughout the site; buildings to ground plane, throughout riparian corridor (naming of streets, signage/technology education, patternation) - co design process with artists / community
- Education
- Artefacts
- Plants

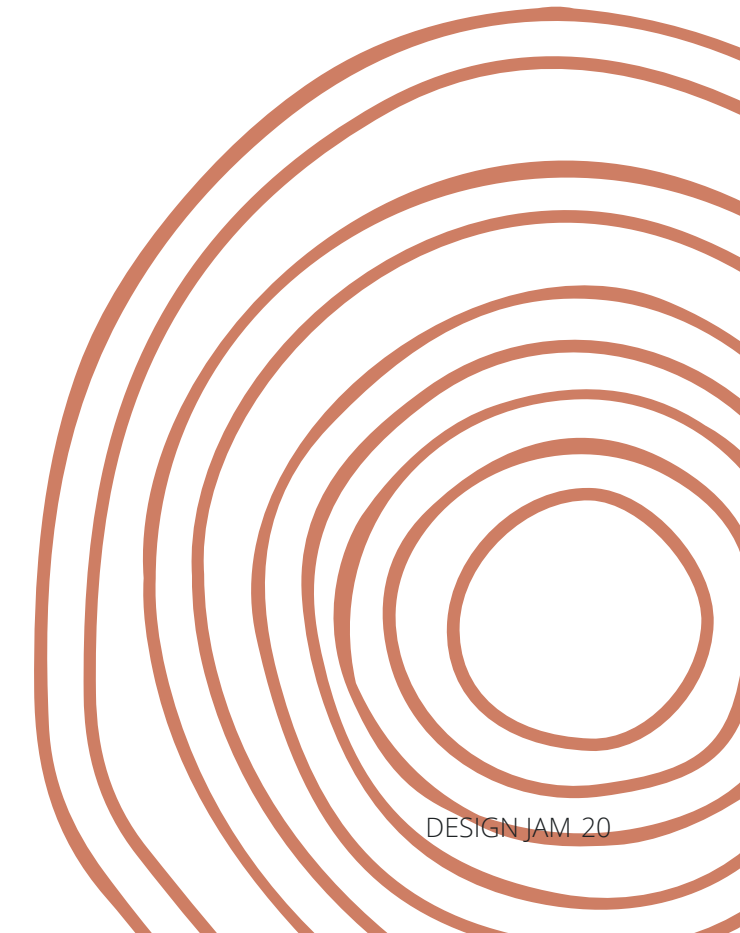
SUMMARY

Overall the group was extremely pleased with the progress of the project and want to be involved in any future community meetings / design jams etc. They were excited about the First Nations enterprise element of the design and the First Nations land management / rangers running the maintenance and management processes on site.

Something they were concerned about was the retainment of existing trees / planting communities as well as the proposed introduced native plants, but these concerns were resolved through explanation from Yerrabingin. Aunty Glenda would be a good person to contact in regard to plant species.

WHO ATTENDED

- Aragung Cultural Heritage
- Ngunawal Heritage Aboriginal Corporation
- Waawaar Awaar Aboriginal Corporation
- Community Elder
- Kamiaroi-Yankuntjataara Working group



TARGETED WORKSHOP

Northern Gateway Use of Language, Naming and Wayfinding workshop

February 9th 2022

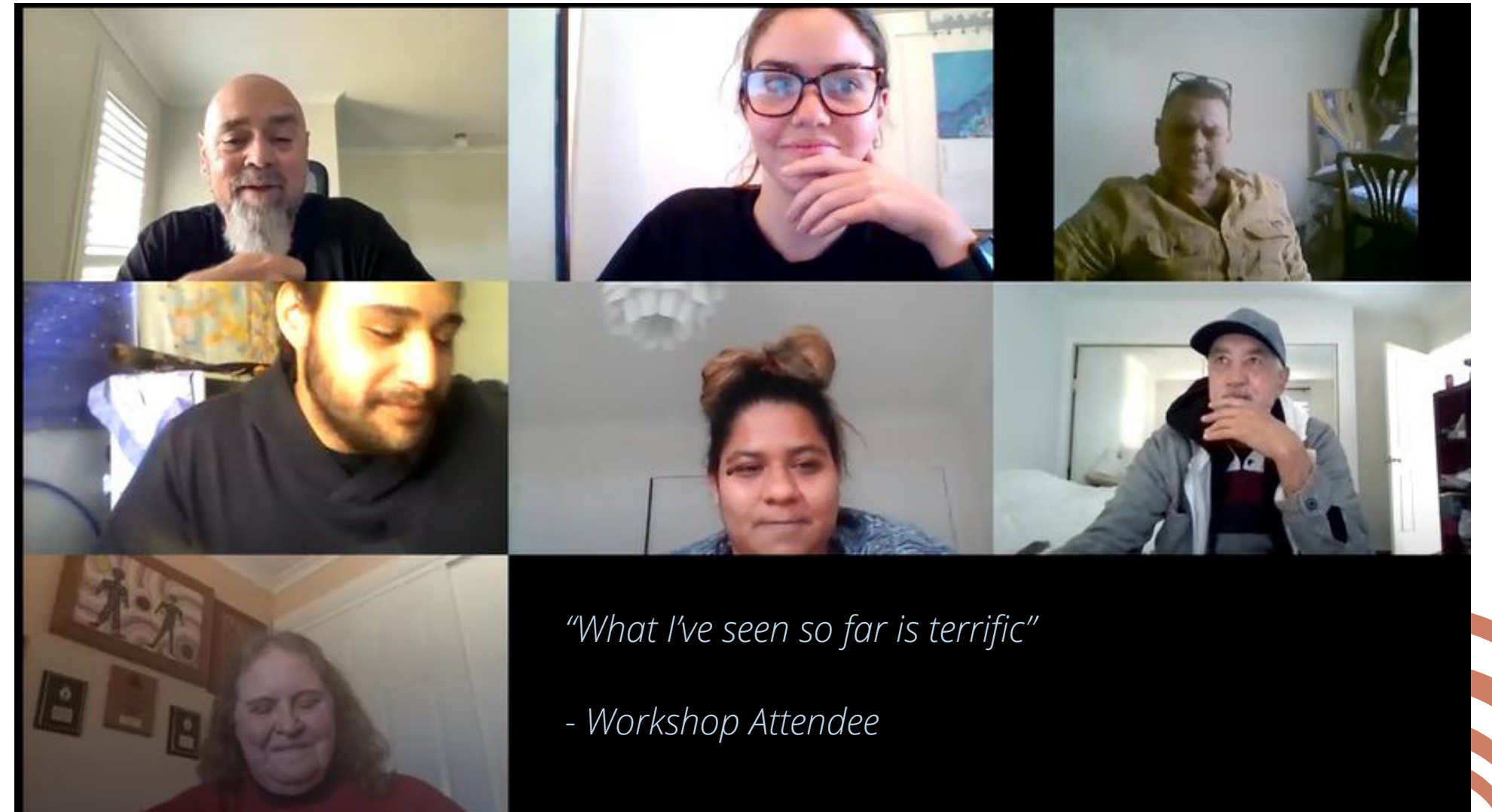
During this workshop we ran through the design with Representative Aboriginal Parties and asked them to give us positive / negative feedback, ideas for suggestions and also if they had any questions. We then took this information back to the team for further design development.

- Look into historic and future flooding events, don't want things 'washed away'
- Signage for educational purpose
- Artefacts to go back on Country where they belong. Care/Control agreements
- Cumberland Plain has great variety of plant species
- Groundcovers used for erosion control
- Creek naturalisation
- Naming streets in language
- What species of trees are they prohibiting? -Glenda
- Will prohibited species that are there currently be removed?
- Will Aboriginal people have access to this area?
- What are the plans for education? How are you going to educate people on the area?
- Will there be signage interpretation? QR codes sharing species / history? What about the intangible aspects of our history?

- Is there a keeping place for artefacts? What was found on site?
- Great to create jobs for mob/management site - rangers/management role for community

WHO ATTENDED

- Butu Heritage
- Waawaar Awaa
- Corroboree Corporation
- Community Elder
- Kamilaroi-Yankuntjataara Working Group



Naming Workshop | Yerrabingin

WALK ON COUNTRY

June 22nd 2022

The project team met with the local Dharug women and walked the site. The concepts were shown spatially and narratives were shared. It was an emotional day filled with lots of feedback on the concepts. Some of the key comments were:

- Consider the impact the project will have on generations (our children, grandchildren, great grandchildren)
- Consider all layers – land and people work together
- What is the site going to give back to the Dharug?
- Culture is continuous – not just about pre-colonisation
- Black swans (Mulgoa) are part of our Country
- Consider a space for Dharug people only to access – a cultural space
- Current ‘public space’ makes it hard for Dharug people to maintain cultural practice on Country
- Aboriginal community access enables the environment to be constantly managed, protecting the landscape
- It’s the multiple layers in the design that create a restorative approach
- Consider plants from our (Dharug) Country, not other Country
- For the record, we are not ‘signing off’ on this development. No one person can do this on behalf of Country

WHO ATTENDED

- Aunty Carla Pignatelli - Dharug Elder
- Cindy Laws - Dharug Traditional Custodian
- Jacinta Tobin- Dharug Traditional Custodian
- Darleen Johnson - Dharug Traditional Custodian
- Justine Copline- Dharug Traditional Custodian



Walk on Country | Yerrabingin

AEROTROPOLIS WORKSHOP AND LUNCH

August 22nd 2022

We facilitated a design workshop with the Dharug women to discuss the overarching principles and ideas for all projects across the Aerotropolis. We then met with our clients and shared conversations over lunch. All ideas were shared and reflected upon at the end of the day in a group discussion. Some of the key ideas were

- Designing for Kin; retain and nurture key stone species, no monoculture of planting
- 50m plus for riparian corridors
- Showcasing Dharug Country from the sky. People will know this is Dharug Country when flying over it
- Bush Tucker corridors with link to locally run restaurant and for the public to forage.
- "We can do for you what you can do for us"
- Wianamatta - Mother Creek
- Using landscape design to reflect the interconnectedness of people and Country
- "Mulgoa" Black Swan Country
- Diversity in species
- Legally binding document - no tick a box and for accountability back to community
- Having access to Creeks and Rivers. Undertake cultural activities. Having a safe space to gather

WHO ATTENDED

- Aunty Carol Cooper - Dharug Elder
- Cindy Laws - Dharug Traditional Custodian
- Jacinta Tobin- Dharug Traditional Custodian
- Darleen Johnson - Dharug Traditional Custodian
- Justine Copline- Dharug Traditional Custodian
- Uncle Wes Marne - Bigambul Elder



All Images: Aerotropolis Workshop | Yerrabingin



RAPS FEEDBACK SESSION

June 12th 2024

We facilitated an online workshop with the Registered Aboriginal Parties (RAPs) who RSVP'd for this workshop. It was an opportunity for Yerrabingin, Nettleton Tribe and Geoscapes to update community on how the design has developed since they last saw it and gather feedback to progress the current concept.

We asked the following questions to community to guide their feedback in a way that would result in key design solutions for the project.

- Has Water Country been supported through the approach? How could Water Country be further acknowledged, incorporated, and supported?
- Does the approach provide spaces that nurture Non-Human Kin? How could support for Non-Human Kin be enhanced?
- Does the approach provide spaces for community use and activation? In what ways would you like to see the Community moving through and using these spaces? What improvements could be made to accommodate these uses?

WHO ATTENDED:

Ethan Trewlynn	Aunty Glenda Chalker
Vicky Slater	Pearl Depoma
Helen Slater	Arika Jalomaki
Kayelene Terry	Paul Boyd
Kadi Khan	Lee Carroll
	Marilyn Carroll-Johnson

FEEDBACK:

- Burra Park naming process: How was this name decided upon? Burra in Dharug language means 'Eel' not 'Sky'. It is insensitive to have Aboriginal language paired with 'Park'
- There is wide concern about an increase in flooding due to the proposed hard surfaces and water runoff
- Is there opportunity to re use water on site?
- "This is a very extensive modification to Country"
- Is there going to be any intervention to prevent the summer heat affecting the surrounding areas?
- Are you restricted to a particular coloured roof?
- I do not agree with what is happening here, I do not agree with this project - Kadi Khan
- Planting of non-endemic species attracts non-endemic species and evicts endemic species that nest in the area.

Kamilaroi Yunkuntjatjara Working Group does not agree with the planting of non-endemic species as it will attract other species to the region.

- Water runoff from roofs and into landscape is a great idea.
- Storytelling through artwork; wayfinding on walls, pathways, fencing and shelters.
- Colourful murals with waterways and animal footprints.
- Inclusion of bush tucker gardens. Great idea to be able to sell on site.
- Include a large community space with BBQs for weekend use. Would be a great place for storytelling and education; damper making.
- Would be great to have another walk on Country to get a better understanding of the site.
- We are happy with everything that was discussed and have no further input. It's a massive project, but we are happy with what was said and think they covered more than expected.
- Black swans will be attracted to the proposed water bodies on site.
- Access for community to connect with Country through

gathering and resource foraging.

- The land now has capacity to absorb water flow, increasing hard surfaces will increase flooding across the site.
- Water could also be represented through colour and wayfinding.
- For an industrial site, the design has gone above and beyond for community activation.
- It's important to have spaces in nature for staff to sit and be in on breaks.
- Nature / Country is a wonderful tool for our souls.
- Additional workshops during detailed design phase of the project. We have a great opportunity as a whole to have more input into this project.
- Incorporating a Cultural Space for community has a big positive effect. Not a lot of projects think to include a space like this - it's great!
- Initial Design Jam was in 2021. There is now a new project team and concept plan. It's been suggested that we have a second Design Jam to create more ideas.

DHARUG WOMEN FEEDBACK SESSION

June 25th 2024

This feedback session ran similar to the RAP feedback session on the previous page. It was an in-person discussion at the Castlereagh Conference Centre, for Yerrabingin, Geoscapes and Nettleton Tribe to present the updated design to Dharug Traditional Custodians.

WHO ATTENDED

- Cindy Laws - Dharug Traditional Custodian
- Jacinta Tobin- Dharug Traditional Custodian
- Julie Jones - Dharug Traditional Custodian
- Justine Copline- Dharug Traditional Custodian

FEEDBACK

- These lands have been occupied for thousands of years – The last 236 years have been nothing but hurt – Our lands have had so much destruction and pain. Our people are constantly disregarded.
- Everyone always says “They’re not real damsns, they’re man-made” but from our perspectives why have they never emptied why have they been sustained – We have built over these – They need to understand what they’re building upon. Our lands will start sinking – they are sinking now – they won’t listen to us.

- Like in Sydney – they disregard nature and build tunnel pipes – how can this water fit into these small pipes – Development destroys natural flow on effect that have sustained Country forever.
- This is not just for this site – Please know we are on many panels and have to say the same thing – It is happening everywhere.
- There are many restrictions everywhere that stop things from happening – it’s so frustrating to watch – nothing is realistically built to sustain Country, our future generations or anything.
- Keep the mother trees. The root systems cross over with trees – they are like families – It’s not about keeping a few – It’s important to think of them as a family – If you cut the Mother tree down the others will die.
- To developers, stop trying to keep meeting the target – reach further. Do better.
- Where is the paper bark family on the natural water body?
- Dharug people cannot go into public spaces to do ceremony – We don’t do it for entertainment – Its for

us – Please show us where our space is.

- Water Country – They are flood and clay soil lands – It will never drain out – It will be in constant flood – It will just sit there.
- Have we got the underground water duct system maps? This is crucial in understanding how water moves under the site.
- Educate on the wind – Use for an educational space – Wind is storyteller it carries information and works with the seasons.
- Yarning circle is okay in public educational spaces. Not in Dharug cultural space.
- Don’t bring in sandstone from other Countries.
- Please stick with working with Traditional Custodians.
- We can send a list of 50 different artists of the area.
- Innovative wayfinding. Song / sound, phone activation.

PLANT SUGGESTIONS

- Yam Daisy, long Yams, Native sarsaparilla, Smilax, Black Wattle, Cinnamon myrtle, Lemon myrtle

- Lomandra - needs to be maintained correctly.
- It takes 150 years for a tree to become a home (hollows).

CULTURAL SPACE SUGGESTIONS

- We need different spaces; womens and mens business and sometimes things are done together.
- Yarning circles dictate how you use a space. We will make our own yarning circle. Needs to be flexible.
- We’d love to have the space along Cosgroves Creek from where the 3 waters meet to where you currently have the allocated cultural space.
- Why does the public get all that open space - this is such a significant site to us.
- For our kids to do culture - we have to trust our kids to be safe and secure to go out and find / make their own way to find and learn culture.
- Eco-designed toilets so we don’t destroy Country.

DHARUG WOMEN FEEDBACK SESSION (CONTINUED)

June 25th 2024

FEEDBACK

- The seasons and how Country moves is an artwork in itself.
- How much heat are you going to generate?
- Indigital created the first algorithm that the Dharug people all put their information stories and history into – the artwork it created is representative of the whole community.
- Imagine along Elizabeth Drive to set the scene and look like its original site using the building facade.
- Artwork created by Dharug community to be placed within the precinct (façade, pathways, shelter etc).
- Wouldn't it be nice to turn it into some painting – The roof would be cool – When you drive in you could see what land, Country and community you're part of.
- With the solar panels – have you thought about water – There are some solar panels now that generate water.
- How does the solar panels work with not reflecting to impact the pilots or birds flying. Some solar panels are blinding – that also heightens the heat.
- With the tank and water zones that's where you can put the yabbies and stuff back into their natural environment.
- Where are these planes dropping their fuel? They drop fuel before they land. Concerned about the water ways.
- You guys need to work with wildlife carers – to bring the animals back here – the construction of these sites and what's been developed or yet to be has scared them away – It's good to say you're going to plant this and that but they've made homes elsewhere – You want them to come back – How ? What is the plan? – We need to sort this – It's why we forward think – It all sounds good in planning, but we need to be involved before, now and later – We have people who know how to do this.
- Advice: Have (Wildlife carers) – When cutting trees – We will come out and get the wildlife into safety – We can look after them and care for them then bring them back to their natural habitat. (Speak to Justine about this).
- Community could even come here before construction and take what they may use culturally.
- It would be nice to talk to developers and tell them what they're really doing and what they should consider.
- Maybe before this starts to get constructed – Initiate the process now.
- Please make sure to look are the water ducts.
- Consider this is clay Country, water isn't going to absorb into the ground like you think it is.
- We have to think ahead – for the future.



Dharug Womens Feedback Session | Yerrabingin



A VISION FOR BURRAH PARK

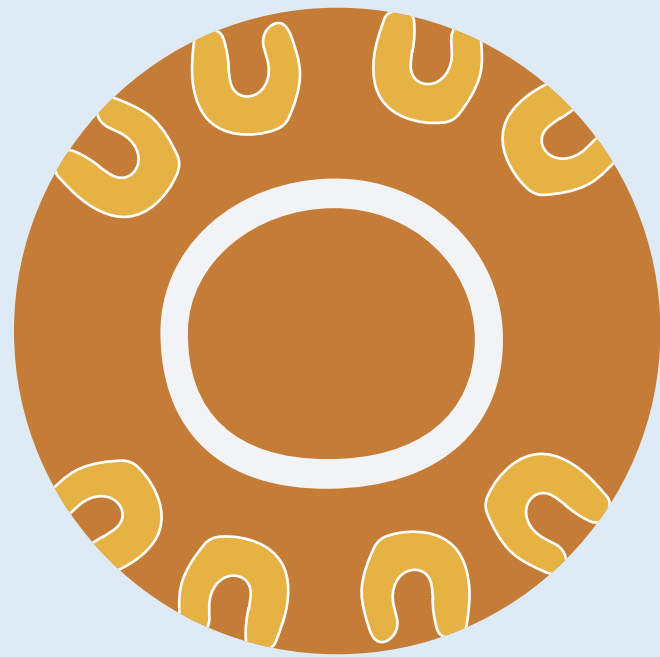
COMMUNITY DRIVEN DESIGN PRINCIPLES

Expressions of Country, Sharing Knowledge

Developed following the Collaborative Design sessions explored in the above section, the Community Driven Design Principles outline the connecting with Country opportunities for the design team to explore in their proposals.

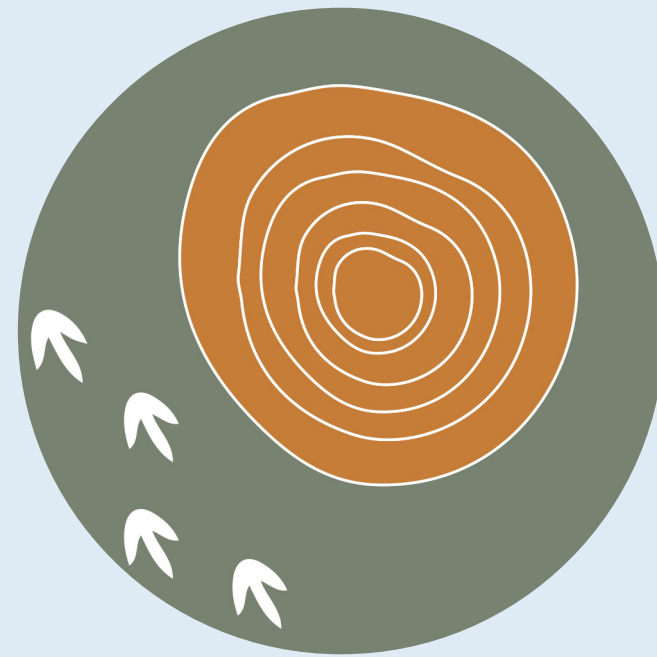
CONNECT TO DHARUG COUNTRY

This can be explored through celebrating Dharug Country; its unique land form, climate, seasons, Non-Human Kin and the spirituality and connection Dharug people have with Country through language, custodianship and ceremony.



DESIGNING FOR KIN

Designing for Kin encompasses understanding ecological systems and functions, creating appropriate habitat and ensuring green links.



ENTERPRISE OPPORTUNITIES

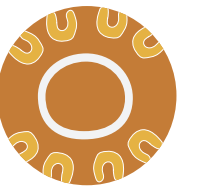
First Nations-owned and operated businesses should be prioritised within the site. From land management, and plant propagation, to bush tucker restaurants, and cafés, to tours and NAIDOC events.



CULTURAL PRACTICE

To acknowledge Dharug culture is to ensure safe spaces are available to use for cultural practice and gathering. This is a space of sharing knowledge and culture, a great place of education.





COMMUNITY DRIVEN DESIGN PRINCIPLES

Connect to Dharug Country

Connecting to Dharug Country involves integrating cultural, social and environmental elements into the design of Burrah Park. Water, symbolising life and culture is central to Dharug culture. Designing for water Country is vital in ensuring the health of Cosgroves Creek and further Mother Creek (Wianamatta). This can be explored through the built-form and landscape design, focusing on the path and journey of water through the site into these protected zones.

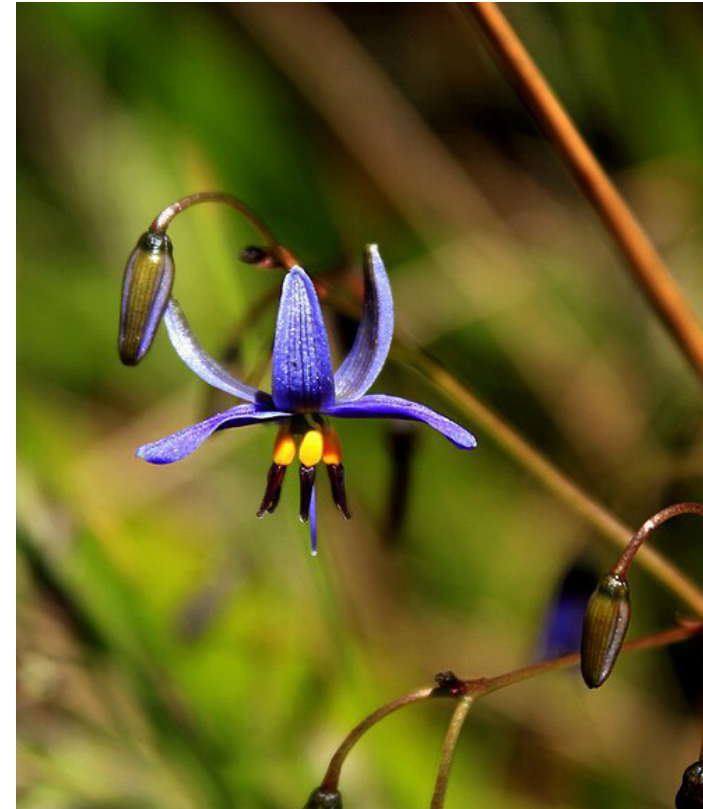
Being able to see this path as it makes its way through the development serves as an educational tool, highlighting the project's acknowledgement and care for Country.

Creating immersive spaces for people to dwell and learn allows for engagement with local Non-Human Kin.

Lighting could also be explored across the development and could reflect the seasonal rhythms of Dharug Country. For example, changes in lighting, such as warm tones during wattle flowering season.



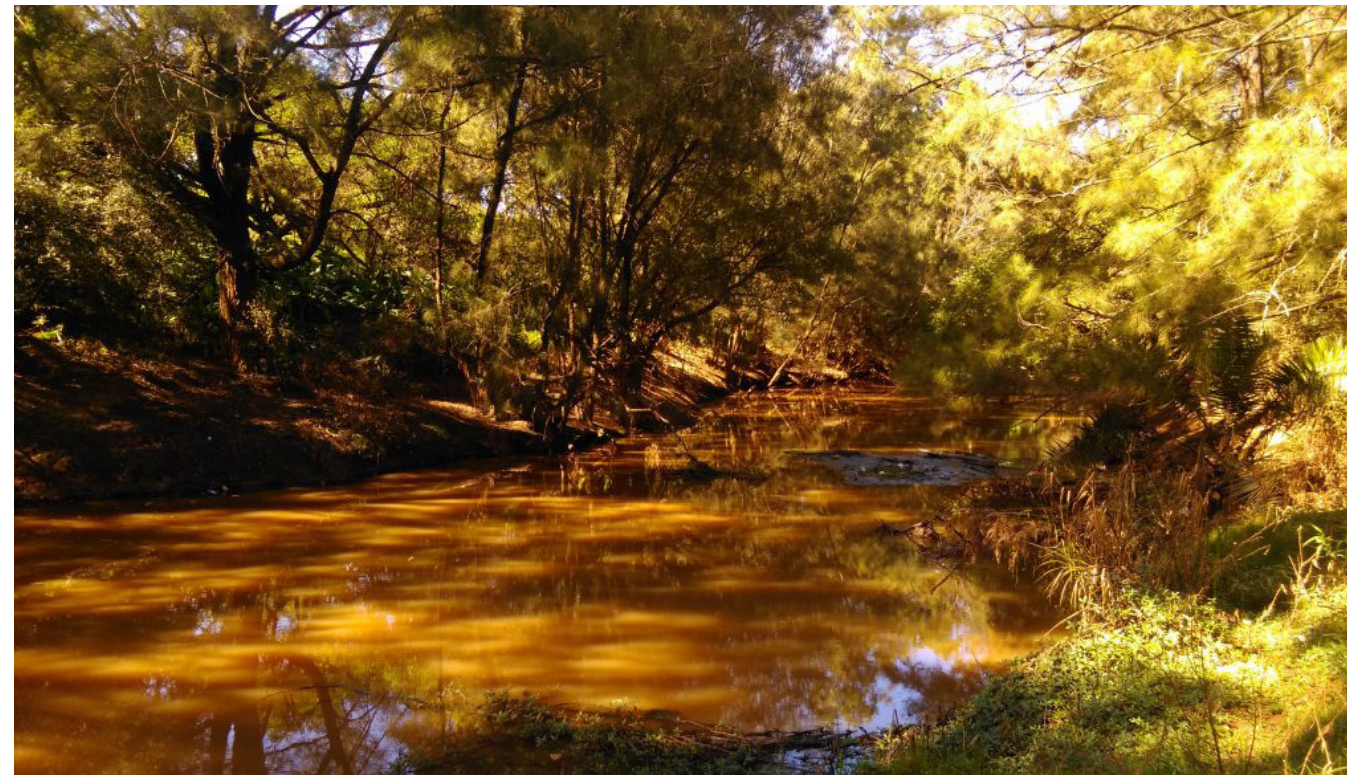
Mugadung (Blue Tongue Lizard) | NSW National Parks



Dianella | Sam Genas



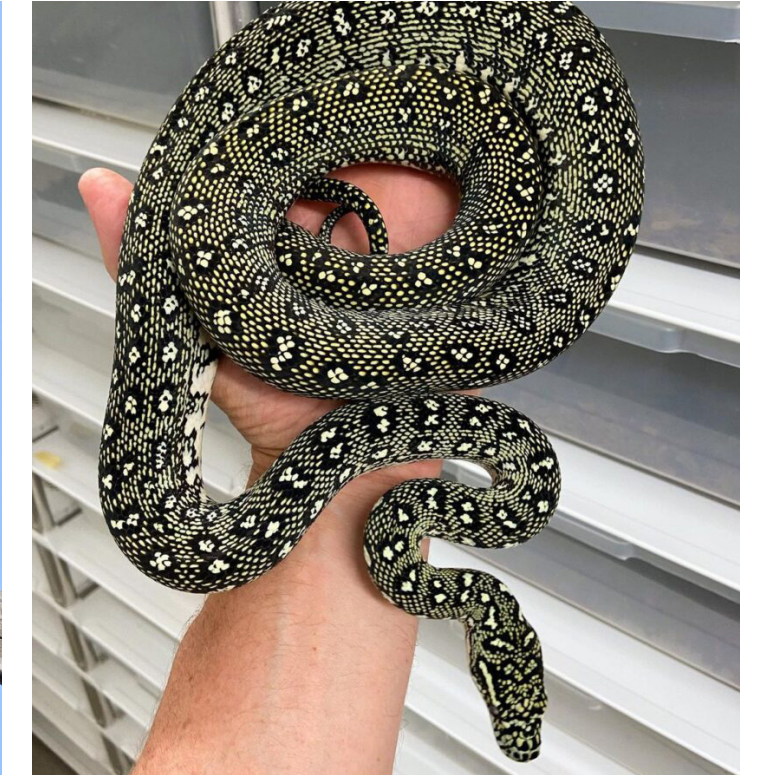
Cultural Burning | Bundanon



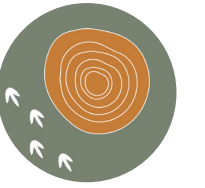
Wianamatta Creek | Oonagh Sherrard



Garad (Black Cockatoo) | Greg Wyncoll



Maliya (Diamond Python) | Randy Jones



COMMUNITY DRIVEN DESIGN PRINCIPLES

Designing for Kin

New developments such as Burrah Park often disrupt natural habitats, leading to habitat loss and fragmentation. Designing for Non-Human Kin in mind helps mitigate these impacts by preserving existing habitats, creating new ones and providing connectivity between them. This is essential for maintaining biodiversity and ensuring the survival of species in an urban dominated world.

Key considerations and strategies include:

- Native/Endemic plant selection. These are adapted to local climate and soil conditions as well as requiring less water and maintenance compared to exotics.
- Innovative ways to create habitat; bee hotels, butterfly gardens, facade bird boxes. Designing green corridors for animal movement.
- Integrating sustainable water management practices such as rain gardens, permeable pavements, rainwater collection and redistribution on site.
- Vertical garden inclusion into buildings and structures to maximise green space.
- Tree canopy to not only provides natural shade but also habitat for birds and other wildlife.



Raingardens | GHD



Lizard habitat | Benjamint



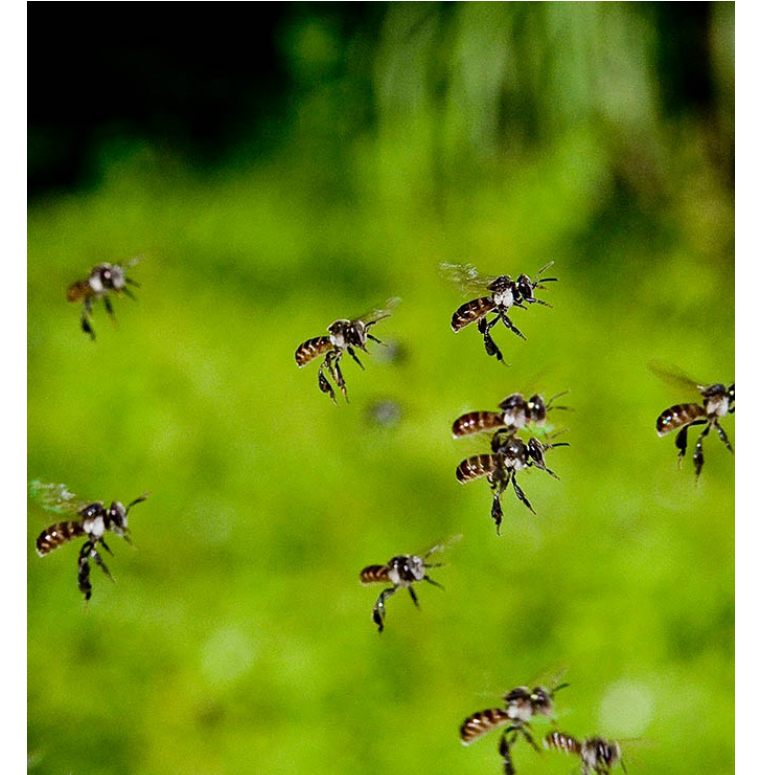
Vertical Gardens | No Source



Cumberland Plain | NSW National Parks



Green roofs | Eric Taylor, Craig Kuhner



Native Stingless Bee | Currumbin Wildlife



COMMUNITY DRIVEN DESIGN PRINCIPLES

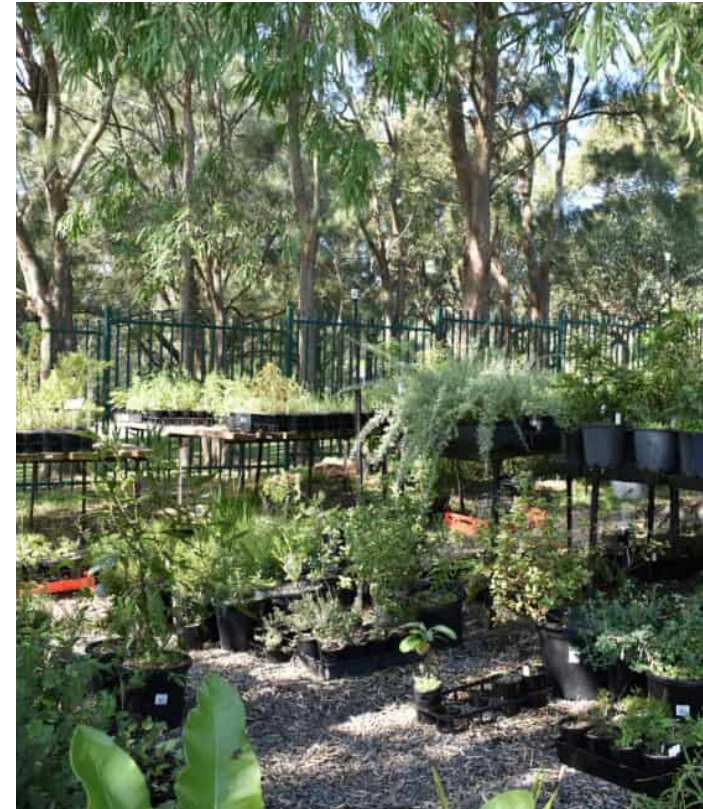
Enterprise Opportunities

Creating opportunities for Aboriginal enterprises at Burrah Park deepens the developments' connection with the community and recognises the importance of continued collaboration. Potential enterprise opportunities include:

- Offer cultural tourism experiences led by local Aboriginal guides, showcasing traditional knowledge, storytelling, art, music and dance.
- Facilitating workshops and training programs to pass on traditional art forms and techniques to younger generations.
- Support Aboriginal artists by providing studio spaces, galleries and retail outlets within the development for creation and sale of artwork, crafts and designs.
- Establish an on site nursery, maintained and run by the Aboriginal community.
- Agribusiness opportunities through bush food / medicinal garden cultivation.



Warehouse Gallery Space | Mandel Aboriginal Art Gallery



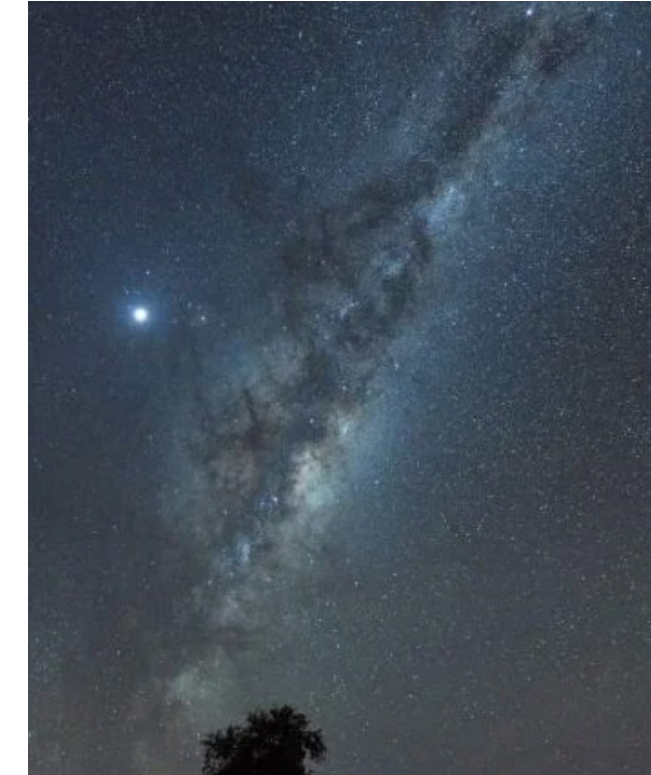
On site Nursery | IndigiGrow



Cultural Dance | Blacktown Arts



First Nations Cultural Tours | Dreamtime Southern X



Astronomy Cultural Experience | National Trust



Bush Food and Medicinal Tours | Vision Walks



COMMUNITY DRIVEN DESIGN PRINCIPLES

Cultural Practices

Incorporating Aboriginal cultural practices into Burrah Park will create meaningful spaces, promote cultural understanding and connection. Here are some opportunities to consider:

- Acknowledgement of Country; both tangible and intangible. A practice for Traditional Custodians to welcome people onto their land and others the acknowledge entering another Country.
- Identify and protect culturally significant sites within the development area.
- Enrich cultural experience through providing opportunities for community to weave, incorporating bush tucker and medicinal species for foraging and education.
- Support First Nations businesses and provide them the opportunity to showcase their products within the development.
- Spaces for ceremonial purposes within the landscape with Dharug tree species close by for burning and ceremony.
- Opportunity for a cultural burn before development begins construction.



Welcome to Country | The Interpretive Design Company



Community gathering | Terry Collins



Smoking ceremony | Deadly Wears



Cultural weaving | Sarah Last



Cultural Burn | The Australian Museum



Cultural Dance | Biennale of Sydney

A clear, solid blue sky occupies the upper two-thirds of the image. At the bottom, a line of trees with green and yellowish foliage stretches across the width of the frame. The text 'RECOGNISE COUNTRY GUIDELINES' is overlaid in white, bold, uppercase letters on the right side of the tree line.

RECOGNISE COUNTRY GUIDELINES

RECOGNISING COUNTRY STRATEGY

Aerotropolis Development Guidelines

This section includes our response to the 'Recognise Country: Guidelines for Development in the Aerotropolis' document created by NSW Government. We introduce the guidelines of the Recognise Country document, developed to ensure Country is considered in all infrastructure projects across the Aerotropolis site.

We introduce our Elements of Country framework, that we use to look closely at Country and develop design considerations for the Burrah Park site. We then develop design considerations to address the Recognise Country Guidelines for each Element of Country, to ensure a detailed approach. Finally, we analyse design considerations for each Element of Country in a set of Spatial Typologies across the site.

STARTING WITH COUNTRY

- / Cultural Safety*
- / Meaningful Engagement*
- / Economic Development Opportunities*



CULTURAL LANDSCAPE

- / Cultural Values and heritage*
- / Landscape*
- / Water*
- / Park and Open Space*
- / Caring for Country*



BUILT-FORM

- / Culturally Responsive Design*
- / Cultural Responsive Social Infrastructure*
- / Cultural Responsive Public Art*



LANGUAGE AND WAYFINDING

- / Place Naming*
- / Wayfinding and Signage*



ELEMENTS OF COUNTRY

Exploring Burrah Park

“Country is made up of a series of interconnected elements that come together to form the environmental, cultural and social system of a place. To design with Country is to design with the elements of Country”

-Yerrabingin

A way to think and learn about Country is to consider Country as made up of a series of interconnected elements: Move with Country, Water Country, Sky Country, Non-Human Kin Country, Deep Country and Wind Country. This allows us to look at different parts of Country and the role they play in an overall system.

Caring for Country is acknowledging these elements, their place on Country and the processes they are involved in. We inhabit and are inhabited by Country. The Burrah Park development offers an opportunity to celebrate the all-encompassing nature of Country. It's infinite reach into and across the earth and into the sky.

ELEMENTS OF COUNTRY



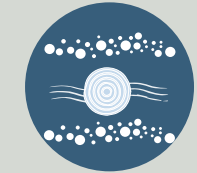
Move with Country

Enduring custodianship of Country through knowledge sharing and record keeping through story, song, dance and art.



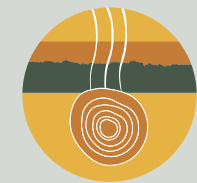
Non-Human Kin Country:

Country is comprised of our Kin: the animals and plants. We celebrate the connection of all living things and the intricate responsibilities within this web of connections.



Water Country:

Water is the connective tissue, the circulatory system, the confluences and paths within and between Country. The meeting of salt and fresh water.



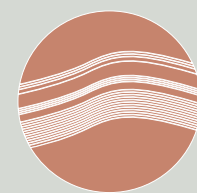
Deep Country:

The most Ancient of connections and one that we honour for the many gifts it shares, the tools we create and the ochres we use to paint.



Sky Country:

This is place of spirits and the ancestors. It holds knowledge of navigation, the seasons, time and Songlines. It allows engagement with our ancestors and spiritual beings.



Wind Country:

Wind carries the messages of the seasons, the songs and words of our ancestors across Country. The landscape and light vibrates to a rhythm; the trees, the grass, and the clouds racing across the sky

ELEMENTS OF COUNTRY FOR BURRAH PARK

- Dharug education and signage
- Planting and ecology workshops

- Endemic and native planting
- Planting to attract Non-Human Kin
- Incorporating habitat

- Raingardens
- Permeable surfaces
- Protect existing Water Country

- Represent Dharug Country colours and geology
- Understanding layers of geology
- Archaeological examples and design

- Connecting to Sky Country through open areas
- Shadow play and shelter
- Ceremonial space

- Kinetic wind walls and elements
- Seasonal planting
- Wild flower gardens for sensory experiences

DESIGNING WITH THE ELEMENTS OF COUNTRY

Move with Country

At the heart of Country is people and community. To move with Country is to be a custodian of Country; we inhabit and are inhabited by Country and must care for her.

Focusing on people allows for the development of a community that is respectful, in tune with Country and spiritually well. People are what create atmospheres and encounters that are genuine. This development can contribute to this through spaces for education, Aboriginal / cultural enterprise development, ongoing employment opportunities for Aboriginal people and autonomous decision making mechanisms.



Smoking Ceremony | Getty Images

RECOGNISING COUNTRY OUTCOMES

Starting with Country



- Create temporary and permanent economic and employment opportunities for First Nations people through site design, development and operation.
- Acknowledging the reciprocal relationship that First Nations people have had with the site over the generations.
- Celebrating this place as a rich resource place for surrounding First Nations groups.

Cultural Landscape



- Celebrating the strong communal nature of First Nations culture.
- Ensuring that all people working within the Aerotropolis understand the significance of Country to First Nations people.
- Acknowledging the ongoing custodial role and reciprocal relationship that First Nations people have had with the site over the generations
- Respecting the surrounding First Nations groups by incorporating key narratives and stories on the site.
- Acknowledging that cultural knowledge exists within the landscape.
- Acknowledging the ongoing custodial role and reciprocal relationship that First Nations people have had with the site over the generations.
- Respecting the surrounding First Nations groups by incorporating key narratives and stories on the site.
- Celebrating this place as a rich resource place for surrounding First Nations groups.
- Celebrating the strong communal nature of First Nations culture.
- Acknowledging the cultural knowledge and technological innovation associated with the area.
- Ensuring that design does not impact significant cultural heritage places

Built-form



Language and Naming



- Acknowledging that Dharug people have an ongoing connection to this site.
- Acknowledging that cultural knowledge exists within language.

DESIGN CONSIDERATIONS

- Ensure that 5% of staff working within the Aerotropolis are of First Nations descent.
- Ensure that 3% of contracts within the Aerotropolis are awarded to First Nations businesses.
- Design spaces to accommodate cultural practice on site.
- Conserve local natural resources.
- When designing, consider the strong communal nature of First Nations culture.
- Provide cultural awareness training all people working within the Aerotropolis.
- Ensure that the Aboriginal community have been engaged in decision making through the entire process
- Creating opportunities to share First Nations culture with the broader community.
- Creating space for cultural practice on site.
- Design spaces to accommodate for the specific needs of First Nations people.
- Built-form should be designed to minimise impact to the environment.
- Design and placement of built-form should draw on First Nations knowledge of the site.
- Built-form should not interrupt First Nations people's performance of custodial roles.
- Through artwork and interpretive design, incorporate significant local stories and narratives.
- Incorporate natural resources into built-form materiality.
- Design spaces for cultural practice and community events.
- Incorporate educational design elements into built-form around the site.
- Design built-form with sensitivity to significant cultural places on and around the site
- Ensure that the Aboriginal community have been engaged in decision making about the use of language through the entire process.
- Where possible use Dharug language in naming and wayfinding.
- Reference cultural knowledge when deciding on naming

DESIGNING WITH ELEMENTS OF COUNTRY

Non-Human Kin Country

We are surrounded by our Kin, the animals and plants on Country. It is our responsibility to care and nurture our Kin to ensure their viability, ecological systems and connections are continued. We must learn and appreciate the connection of all living things and the roles they have within Country.

Non-Human Kin fills the senses with colour, smell, sounds and intuition. As people we are drawn to these elements within an environment, it fills our experience with life outside of our own.



Cumberland Plain | NSW National Parks

RECOGNISING COUNTRY OUTCOMES

Starting with Country



- Acknowledging the diversity of flora and fauna in the area and the role they play in sustaining life.
- Recognising that all development in the Aerotropolis will impact native flora and fauna within the region.
- Celebrating the unique expression of flora and fauna in the area.
- Restoring habitat of endemic species to support site biodiversity.
- Celebrating the diversity of ecologies within proximity of the site.

Cultural Landscape



- Celebrating cultural knowledge and practices associated with endemic flora and fauna.
- Acknowledging the reciprocal relationship that First Nations people have with native flora and fauna and that any development in the area will have an impact on this relationship.

Built-form



- Acknowledging the diversity of flora and fauna in the area and the role they play in sustaining life.
- Recognising that all development in the Aerotropolis will impact native flora and fauna within the region.
- Celebrating the unique expression of flora and fauna in the area.
- Ensuring that local resources are used sustainably.

Language and Naming



- Celebrating the unique expression of local flora and fauna in the area.
- Celebrating the diversity of ecologies within proximity of the site.
- Acknowledging the significant connection that First Nations people have with specific animals, plants and landforms in the area

DESIGN CONSIDERATIONS

- Use endemic vegetation where possible across the site.
- Use a diverse mix of vegetation in new planting areas across the site.
- Using environmentally friendly pesticides.
- Use the form and/or colour of native plant species in interpretive installations.
- Restore habitats for endemic insects, amphibians, invertebrates, and small birds across the site.
- Create a diverse set of areas that allow for a range of user experiences within the site related to the cultural uses and natural identities of areas.

- Ensure that the Aboriginal community have been engaged in decision making about flora and fauna through the entire process.
- Support habitat health for endemic insects, amphibians, invertebrates, and small birds.
- Maintain good health of existing vegetation on site.
- Managing the impact of introduced species on native flora and fauna

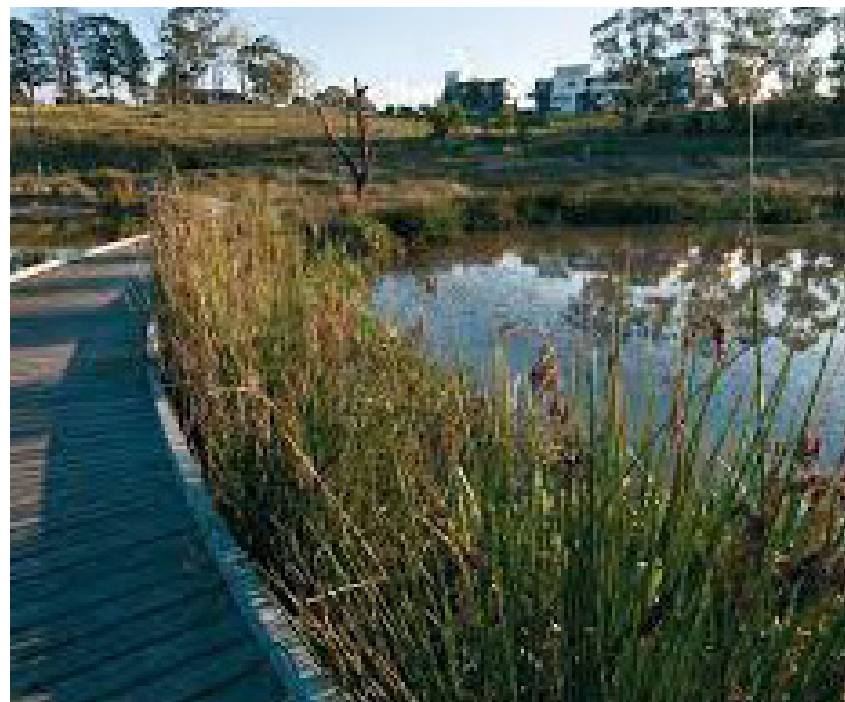
- Built-form should support the movement of water on site towards vegetated areas.
- Create spaces that allow people to access and experience Country.
- Limit built-form close to sensitive ecological zones.
- All developments should consider surrounding wildlife corridors and habitation patterns in relation to aviation safeguarding controls.
- Building form, height and placement should not unnecessarily impact existing vegetation.
- Consider the visual impact that any built-form will have on the surrounding environment.
- Reference the local ecotonal palette of colours, patterns and textures in design.
- Create spaces that allow people to visually connect to surrounding ecological zones.
- Don't overuse natural sourced local materials.
- Reference endemic plants and animals when deciding on naming.
- Incorporate natural patterns, colours and textures of local flora and fauna in wayfinding elements.
- Reference surrounding ecologies in wayfinding.
- Create a diverse set of areas that allow for a range of user experiences within the site related to the cultural uses and natural identities of areas.
- Draw on the cultural uses and natural identities of areas within the site when deciding on naming.
- Reference cultural keystone species in naming and wayfinding elements

DESIGNING WITH ELEMENTS OF COUNTRY

Water Country

Water gives us life, it sustains and nourishes us. Water is guided in and out of spaces by topography and what is placed in water travels with water. We need to care for and protect our waterways and dams because they are sustaining the land and Non-Human Kin living there.

The on site water storage system needs to be thoughtfully designed. Rainwater from roofs can be stored for drinking, land management and storm water coming off streets can be treated and re used also before entering the Creek system. Misting on hot summers days along streets and in nodes can create enjoyable micro climates for people using the space and use the recycled water on site



WSUD | Melbourne Water

RECOGNISING COUNTRY OUTCOMES

Starting with Country



- Recognising that all development in the Aerotropolis will impact waterways within the region.
- Celebrating the waterways and water as a precious resource.
- Acknowledging the significant role the waterways play within the wider landscape.
- Acknowledging the interconnected nature of the landforms and waterways.

Cultural Landscape



- Acknowledging the cultural significance of the waterways within the Aerotropolis area, and the thousands of years that they have influenced and sustained First Nations life in the region.
- Celebrating cultural knowledge associated with the surrounding waterways.
- Acknowledging the significance of water as a precious cultural resource.

Built-form



- Recognising that all development in the Aerotropolis will impact waterways within the region.
- Recognising the variable nature of water flows and designing to accommodate this natural system.
- Recognising that water is a precious and finite resource.
- Celebrating the way that water naturally moves through the landscape

Language and Naming



- Acknowledging the waterways in and around the site.
- Celebrating cultural knowledge associated with the surrounding waterways.
- Celebrating the way that water naturally moves through the landscape.

DESIGN CONSIDERATIONS

- Mitigate negative impacts to surrounding waterways.
- Limit development in riparian corridors due to their high environmental and cultural sensitivity.
- Through design reference the form and colours of the waterways.
- Create spaces that allow people to access the waterways.
- Incorporate WSUD elements across the site.
- Across the site create opportunities for interaction with water.
- Collect rainwater and use in non-potable water systems in line with relevant authorities.
- All developments nearby waterways should consider context up and downstream.
- Limit channelising and straightening of natural waterways
- Regenerating endemic riparian ecologies to improve waterway health.
- Planting appropriate vegetation close to natural waterways.
- Limit earthworks to reduce runoff into waterways and soil degradation.

- Ensure that the Aboriginal community have been engaged in decision making about waterways through the entire process.
- All developments nearby waterways should consider context up and downstream.
- Reference cultural knowledge associated with the surrounding waterways in design.
- Implement water saving practices across the site.

- All developments nearby waterways should consider context up and downstream.
- Limit built-form and hardscapes close to natural waterways.
- Design with consideration to variable water levels/flows.
- Create spaces that allow people to access the waterways.
- Create spaces that allow people to visually connect to the waterways.
- Design roofs to maximise the collection of rainwater.
- Implement water saving practices across the site.
- Reference the natural flow of water through built-form

- Reference the form and colours of the waterways in wayfinding elements.
- Incorporate specific elements of the waterways when deciding on naming.
- Draw on the cultural uses of waterways when deciding on naming.
- Reference cultural knowledge associated with the surrounding waterways when deciding on naming.
- Reference the natural flow of water in wayfinding elements

DESIGNING WITH ELEMENTS OF COUNTRY

Deep Country

Deep Country goes beyond the surface of the ground; it's layers upon layers of spiritual and geological history. When we dance we are celebrating and honouring the spiritual beings below our feet and the many gifts it shares, such as the greenstone axe and the ochres that we paint with.

Country's connection goes from deep into the ground to high above the clouds, it's a system that works together so seamlessly. Rain comes down from the sky and is absorbed by the ground which is then used by trees and plants for nutrients before evaporating back into the sky to continue its cycle. We need to care and nurture the ground we build on to ensure these processes still occur successfully across the site.



Rammed earth midden seat | Yerrabingin

RECOGNISING COUNTRY OUTCOMES

Starting with Country



- Acknowledging that any development in the area will have an impact on the natural landscape.
- Recognising that displacing geological material will have an impact on the place of origin and destination.

Cultural Landscape



- Recognising the strong connection that First Nations people have with the natural landscape and that any development in the area will have an impact on this relationship
- Celebrating cultural knowledge associated with the geological context.
- Acknowledging the cultural significance of local geological resources.

Built-form



- Ensuring that design is responsive to the local environment.
- Drawing on the uniqueness of the natural expression and materiality of the landscape.
- Acknowledging the significant natural land features when determining development in the area.
- Recognising that displacing geological material will have an impact on the place of origin and destination

Language and Naming



- Acknowledging the unique expression of the landscape.
- Celebrating cultural knowledge associated with the geological context

DESIGN CONSIDERATIONS

- Design in conjunction with natural forms, e.g.. ridges, valleys and waterways.
- Use natural landforms at the site as a basis for masterplan design.
- Where possible, use materials from or in close proximity to the site.
- Recycle materials from the site.

- Before any major milestones, e.g. the beginning of construction, invite the project team and First Nations community to a turning of the soil ceremony.
- Ensure that the local First Nations community have been engaged in decision making through the entire process.
- Reference cultural knowledge associated with the geological context in design.
- Don't overuse natural sourced local materials
- Cut and fill strategy to design soil for the site to enhance ENZ zone

- Use materials suitable for the climate.
- Use recycled material from site where possible.
- Use materials with appropriate thermal properties for the local climate.
- Create spaces within the built-form appropriate to predominant weather patterns. Incorporate natural patterns, colours and textures of the natural landscape in built-form.
- Reference forms of the natural landscape in built-form.
- Orient building aspect in reference to natural land features.
- Create spaces that allow people to visually connect to natural land features.
- Use materials from or in close proximity to site where possible.
- Limit excavation and earthworks that displace geological material.

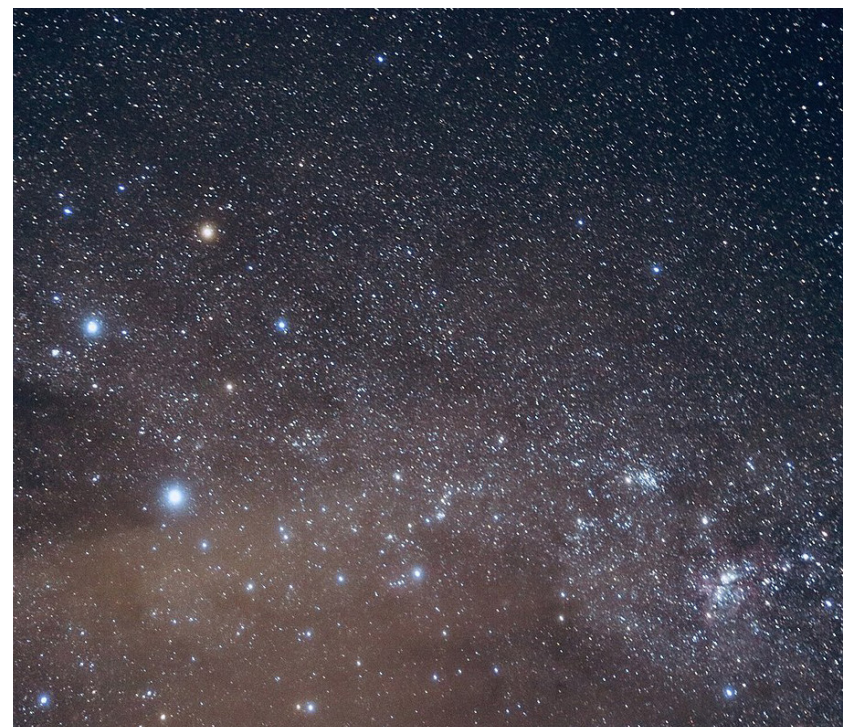
- Incorporate specific elements of the landscape when deciding on naming.
- Reference significant landscape features in wayfinding.
- Incorporate local natural materials in wayfinding elements.
- Reference cultural knowledge associated with the geological context when deciding on naming.

DESIGNING WITH ELEMENTS OF COUNTRY

Sky Country

Sky is a place of spirits, ancestors and knowledge. It tells us about navigation, the seasons, weather, time and Songlines. The sky is a spiritual and ecological clock guiding the other elements through their processes and functions.

Sky creates ephemeral shadows and patterns as they dance along the ground during the day, it enhances sensory experiences and creates enjoyable environments. The night sky tells stories, helps navigates us around Country and is a place for our ancestors. To be able to experience both day and night sky is important!



Night Sky | No Source

RECOGNISING COUNTRY OUTCOMES

Starting with Country



- Acknowledging the pivotal role that the sun plays in environmental systems.
- Ensuring that design is responsive to the local climate and environment.
- Acknowledging the changing nature of seasonality and weather patterns.

Cultural Landscape



- Acknowledging the strong connection that First Nations people have with Sky Country.
- Embracing the positive impact that a physical connection to sky can have on people's well-being.
- Celebrating cultural knowledge associated with the sky.
- Acknowledging the influence that seasonality and weather patterns have on cultural life in the region.

Built-form



- Acknowledging the strong connection that First Nations people have with Sky Country.
- Embracing the positive impact that a physical connection to sky can have on people's well-being.
- Acknowledging the positive heating and lighting benefits of the sun.
- Ensuring that design is responsive to the local climate and environment.

Language and Naming



- Celebrating cultural knowledge associated with the sky.
- Embracing the positive impact that a physical connection to sky can have on people's well-being.
- Celebrating cultural knowledge associated with seasonality and weather patterns

DESIGN CONSIDERATIONS

- Consider the natural cycles of day and night in design.
- Limiting light pollution to reduce impacts on physical connection to night sky.
- Maintaining view lines to significant landforms and sky.
- Draw on cultural knowledge associated with seasonality and weather patterns to inform design.

- Ensure that the Aboriginal community have been engaged in decision making through the entire process.
- Creating places where people can physically connect to the Sky.
- Draw on cultural stories and knowledge associated with the sky to inform design.
- Draw on cultural knowledge associated with seasonality and weather patterns to inform design.

- Built-form should not obstruct significant views and visible access to the sky.
- Reference cultural knowledge associated with the sky in built-form.
- Design buildings that work with the natural cycles of day and night.
- Built-form should not overshadow public and green spaces.
- Utilise natural light where possible.
- Utilise skylights and openings to maximise exposure to natural light and visible connection to sky.
- Use solar power as an energy source where possible.
- Where possible use passive solar design to reduce the requirement for mechanical heating and cooling.
- Maximise on-lot landscaping and integrate with built-form to reduce heat island effect.

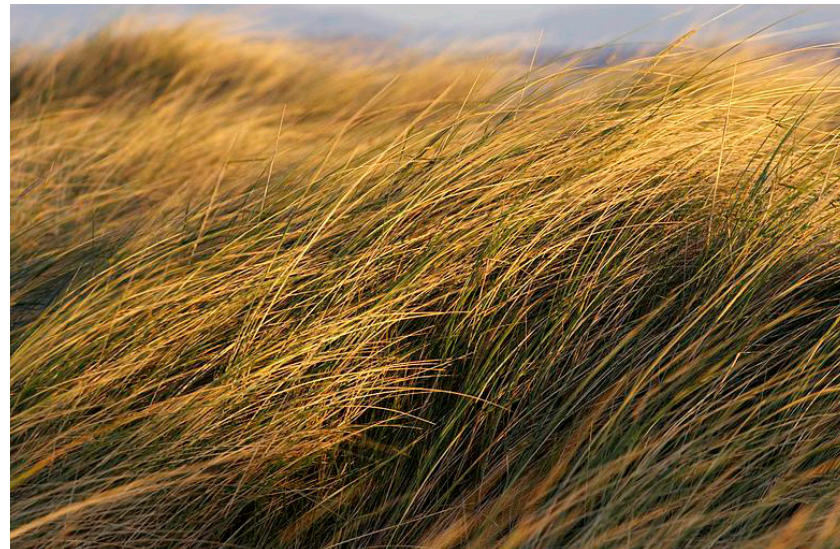
- Draw on cultural stories and knowledge associated with the sky when deciding on naming.
- Incorporate reflective materials in wayfinding elements to allow for a physical connection to the sky.
- Incorporate natural patterns and colours of the sky in wayfinding elements

DESIGNING WITH ELEMENTS OF COUNTRY

Wind Country

Wind creates natural, environmental and spiritual movement. It carries messages of seasonal change, the songs and words of our ancestors across Country. The rhythm that sweeps through creates a sensory experience which in turn enhances the overall experience of a space. The smells of flora are carried through, along with the cool air directing you around the space. Wind is also a form of pollination, dispersing seeds across the land to encourage birth and growth.

Wind is something we can feel but cannot see. Its rhythm varies and to be able to see its patterns would enhance the overall experience. It's an element of wayfinding and creates a sensory experience, guiding people with its sounds.



Grasslands moving with the wind | Peter McCabe

RECOGNISING COUNTRY OUTCOMES

Starting with Country



- Acknowledging the importance of wind to the overall ecological function of the site.
- Acknowledging the positive benefits of natural wind movement throughout the site.
- Acknowledging the changing nature of wind direction and movement across the site.

Cultural Landscape



- Celebrating cultural knowledge associated with seasonality and weather patterns.

Built-form



- Acknowledging the changing nature of wind direction and movement across the site.
- Ensuring that design responds to dominant seasonal wind changes.
- Acknowledging the importance of wind to overall ecological function of the site.
- Embracing the cooling properties of wind for climate-responsive design in the built-form.
- Acknowledging the way that wind naturally moves through the landscape.

Language and Naming



- Acknowledging the way that wind naturally moves through the landscape.

DESIGN CONSIDERATIONS

- Planting endemic vegetation to support seasonal change across the site.
- Designs should consider the natural movement of wind throughout the site.
- Harnessing the Kinetic force of wind through interpretive design and installations.

- Reference cultural knowledge associated with seasonality and weather patterns in design.

- Design built-form appropriate to changing wind conditions.
- Consider dominant wind patterns when designing public or outdoor spaces.
- Building form, materiality and density to be designed with consideration of local weather conditions.
- Include Kinetic design elements and installations that interact with wind.
- Design built-form to benefit from the cooling and ventilation benefits of wind.
- Reference the natural movement of wind in textural finishes.

- Consider the natural movement of wind when deciding the circulation paths throughout the site.
- Reference cultural knowledge associated with wind when deciding on naming.



TPOLOGY APPLICATION

SPATIAL TYPOLOGIES

Mapped at Burrah Park

The following section speaks to the typologies of the site and the opportunities that each of them have to connect with Country and the design principles for the project.

The typologies include:

- Riparian - Cosgroves Creek and the protective buffer zone, the central spine water bodies and accompanying vegetation.
- Parklands - Public Open Space incorporating the most activation for the site.
- Streetscape - In between lots and at entry points, guiding users through the space.
- Nodes - Intimate spaces for workers to experience the landscape.
- Lots - The warehouses themselves and their surrounding canopy cover.



RIPARIAN

Overview

A riparian zone is land alongside Creeks, streams, gullies, Rivers and wetlands. These areas are unique and diverse, and are often the most fertile parts of the landscape.

(Source: Water NSW)

In a natural or well managed state, riparian areas are important for many reasons. They can support diverse vegetation, help maintain bank stability, and increase ecological and economic productivity. These conditions support cleaner water, reduce disease and pests, and retain important nutrients and soil. Healthy land supports healthy waterways.

The riparian zone for Burrah Park should consider:

- Re-vegetation with endemic/ native planting
- Introduction of paths for recreation (walking, running, cycling etc)
- Opportunities for education
- Community Uses
- Opportunities for regional connections within the riparian corridor



Water Play | Out to Play



Nature Reserve | All Trails



Riparian Restoration | Science Learning Hub



Creek Rehabilitation | Water by Design



Saltwater Creek Boardwalk | NSW Government

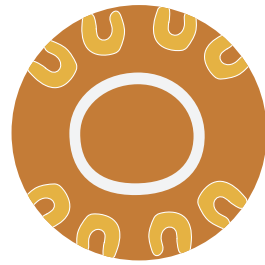


Yellow-tailed black cockatoo | Alec Smart

RIPARIAN

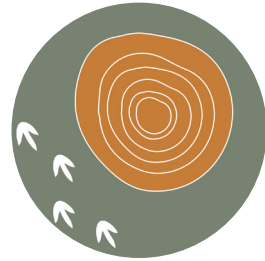
Visual Application

Design Principles



Connect to Dharug Country

- Providing walking trails so people can experience Cosgroves Creek and listen to nature



Designing for Kin

- Prioritising existing canopy and proposing endemic vegetation to support biodiversity and habitat



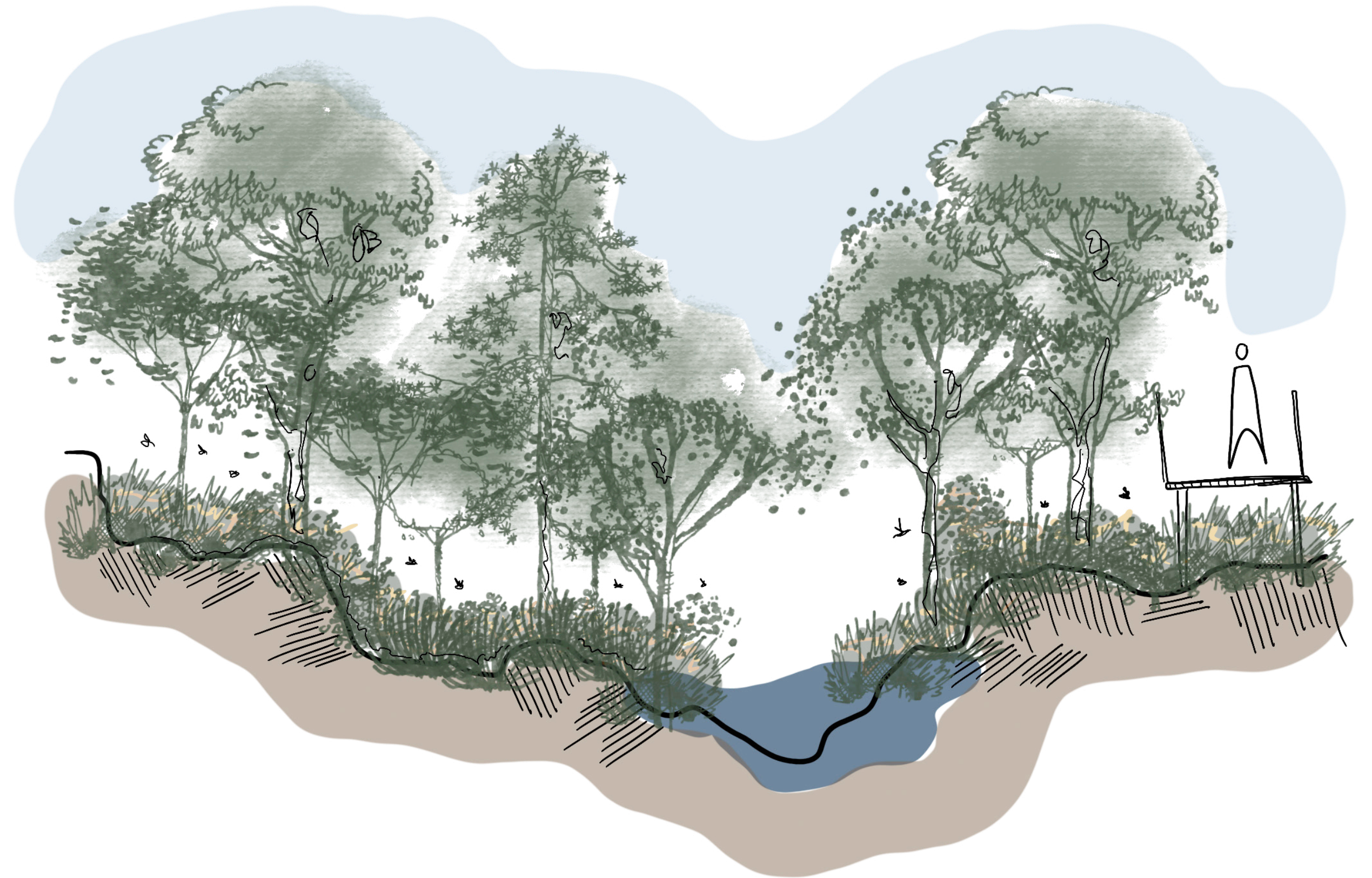
Enterprise Opportunities

- Maintenance and care of Creek line and surrounding vegetation



Cultural Practice

- Pockets of gathering for weaving
- Connecting with the waterways



Illustrative drawing of visual applications

PARKLANDS

Overview

The parklands on site will play a vital role in the way the community and visitors are enabled to engage with Country. It acts to draw people from their workplaces or to the site as a destination. It should provide opportunity and amenity for various use types and incorporate a provision of a framework for future growth and adaptation. A series of accessible open spaces will allow people to interact with native vegetation, learning about different species and their uses (such as edibles or producing native oils). A community presence on site such as through employment of First Nations rangers could be on site as a source of assistance for locals, as well as providing cultural education.

Parklands will:

- Support community use of external areas
 - Allow for a framework of community focused initiatives and social enterprise opportunities
 - Promote education and connection to Country
- Culturally appropriate vegetation planted throughout, creating home for our Kin as well as sensory experiences and foraging opportunities for community. Tour groups and ceremonial events can occur here as well as creating a destination for tourists and weekend activity



Royal Park Nature Reserve | Richter Spielgerate



Vision walks Eco Tours | Welcome to Country



Willum Warrain Aboriginal Gathering Place | RMIT



Pergola and BBQ | Amber Interiors



Breaking the indoor inertia | Fleetwood Urban

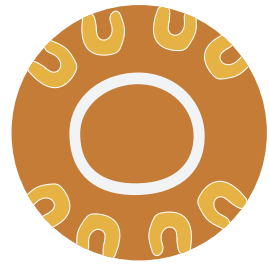


Platypus Waterholes Walk | Walking SA

PARKLANDS

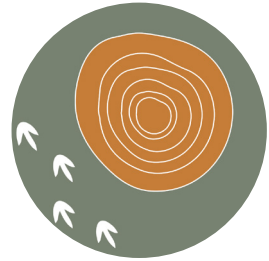
Visual Application

Design Principles



Connect to Dharug Country

- Wayfinding experiences to journey through the parklands
- Stop, rest and listen to the surrounding environment



Designing for Kin

- Seasonal gardens to attract pollinators
- Habitat landscape for small birds



Enterprise Opportunities

- Cultural tours
- Bush tucker and medicinal plant nursery



Cultural Practice

- Area for ceremonial practice and performance (dancing)
- Providing views out to broader landscapes
- Cultural burns



Illustrative drawing of visual applications

STREETSCAPE

Overview

The designing of the streetscapes within the area is important as it extends the natural landscape beyond the Riparian and Lake area and allows landscape to encompass the lots and architecture of the site. Streets also play a vital role in tying several independent aspects of the design together, creating an entire network of Country centred design.

The streetscapes are conduits of connection and also inviting spaces conducive to community interactions amongst the people and the land.

Wildlife safety should be encouraged through the inclusion of an abundant amount of green space and the potential for incorporated habitats throughout. No flowering along main streets to keep Kin safe.

Community can be a part of the propagation and planting of these streetscapes and further benefit from them as they will create enjoyable discovery trails around the site and will create an abundance of sounds coming from our Kin.

Consider subtle street lighting for our night birds and insects. Consider low light intensity, such as amber lights.



Cultural Concerns in the Landscape | Outdoor Design Source



Green streets | Wheat Design Group



Garden Path | Hermo Schulzer Gardens



Linear Park | The DIRT



Naturalistic Garden in the Streetscape | Mallee Design

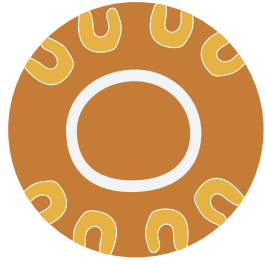


Fish | Iron Age Designs

STREETSCAPE

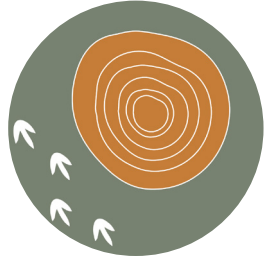
Visual Application

Design Principles



Connect to Dharug Country

- Seasonal flourishes
- Raingardens to collect and recycle water



Designing for Kin

- Native and endemic planting to encourage animal life
- Grassland species to encourage lizards and ground animals



Enterprise Opportunities

- Maintenance and tours



Cultural Practice

- Foraging, weaving and connection to broader landscape views



Illustrative drawing of visual applications

NODES

Overview

Smaller parks should be located throughout the masterplan to provide amenities throughout the community. Occupants should be able to gain access to public open space within an easy walk from their workplace. Quality is a key driver of both appreciation and use of public open space. Numerous studies have identified that people are far more likely to be active and engage with the outdoors and natural spaces if they have access to clean, well-maintained, shaded, and visually appealing spaces and pathways.

Quality is just as important as adequate quantity. Feedback from many studies indicates the community would much rather limited funds for investment be used for a single high-quality park with a number of activations and opportunities than development of, for example, three smaller parks with basic equipment. (Extract from NSWGA Greener Places). Nodes will benefit people and the community because they will provide spaces for activities to occur and for people to sit and be with nature. Activities such as foraging, weaving and tours can be explored here to enhance the environment. These spaces will also create microclimates for people to sit and be comfortable in, ponds used for cooling during warmer Summer months.



Royal Park Nature Reserve | Richter Spielgerate



Lower Sproul Plaza | CMG Places



The importance of Landscape Architecture | Land8



Reconciliation Garden | Arcadia



Peninsula Garden | Peyton Hutchison

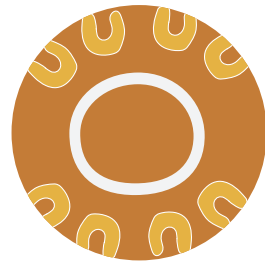


Musk Cottage | Garden Drum

NODES

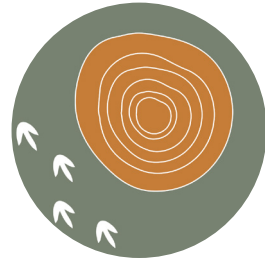
Visual Application

Design Principles



Connect to Dharug Country

- Opportunity to use unique materials, patternation and wayfinding elements in a small intimate space



Designing for Kin

- Pockets of unique vegetation to bring awareness to the colours, forms and textures of the endemic landscape



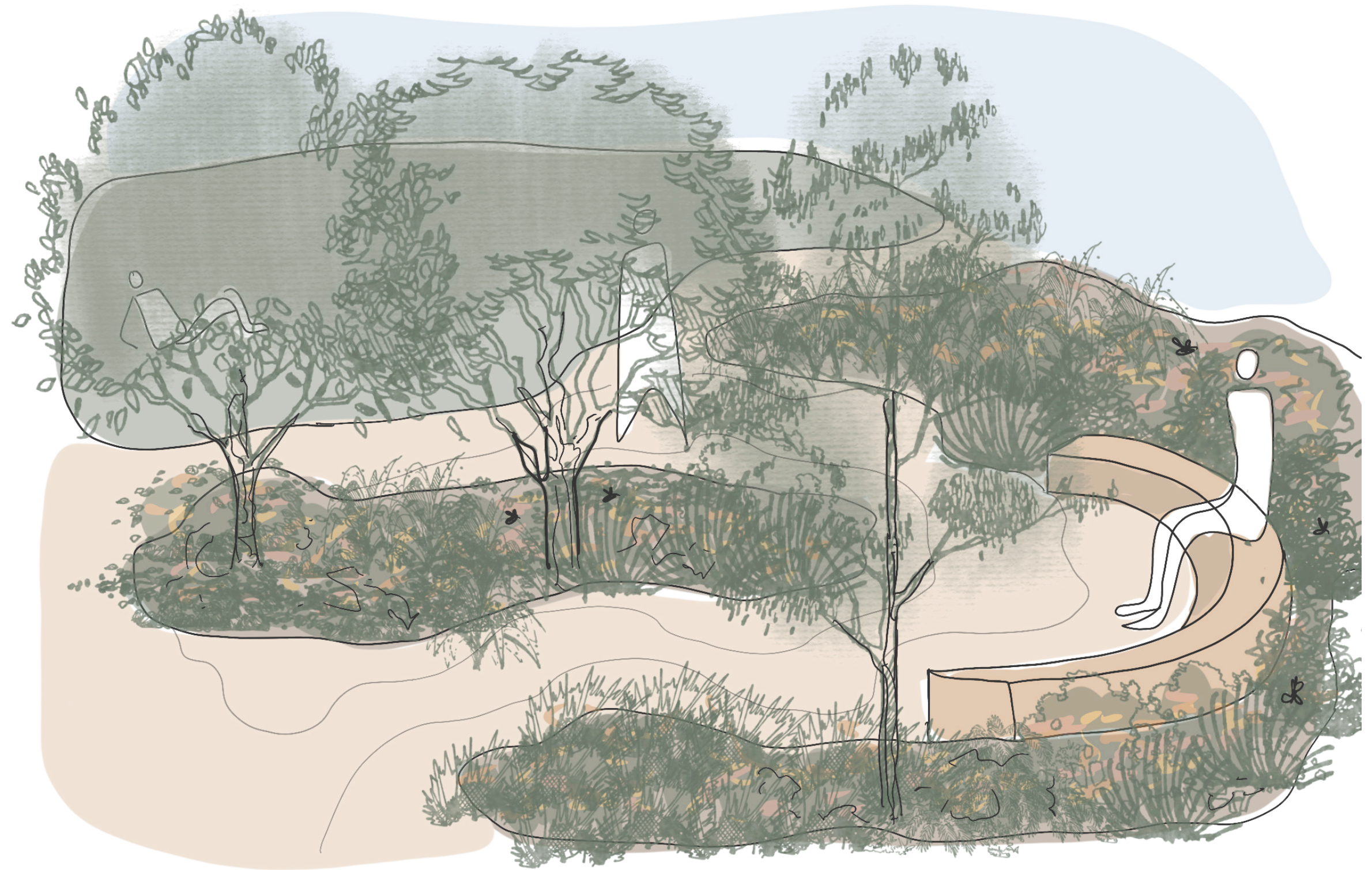
Enterprise Opportunities

- Educational conversations with workers



Cultural Practice

- Safe, quiet spaces to weave, forage, listen and talk



Illustrative drawing of visual applications

LOTS

Overview

The site lots will be greatly dominated by built-form, however opportunities to increase site permeability, reduce runoff, increase tree canopy coverage and mitigate the impacts of the urban heat island effect must be pursued.

Where opportunity exists explore opportunities for greening the built-form through roof gardens and facade planting - this will also improve the thermal qualities of the building.

Landscape within lots should:

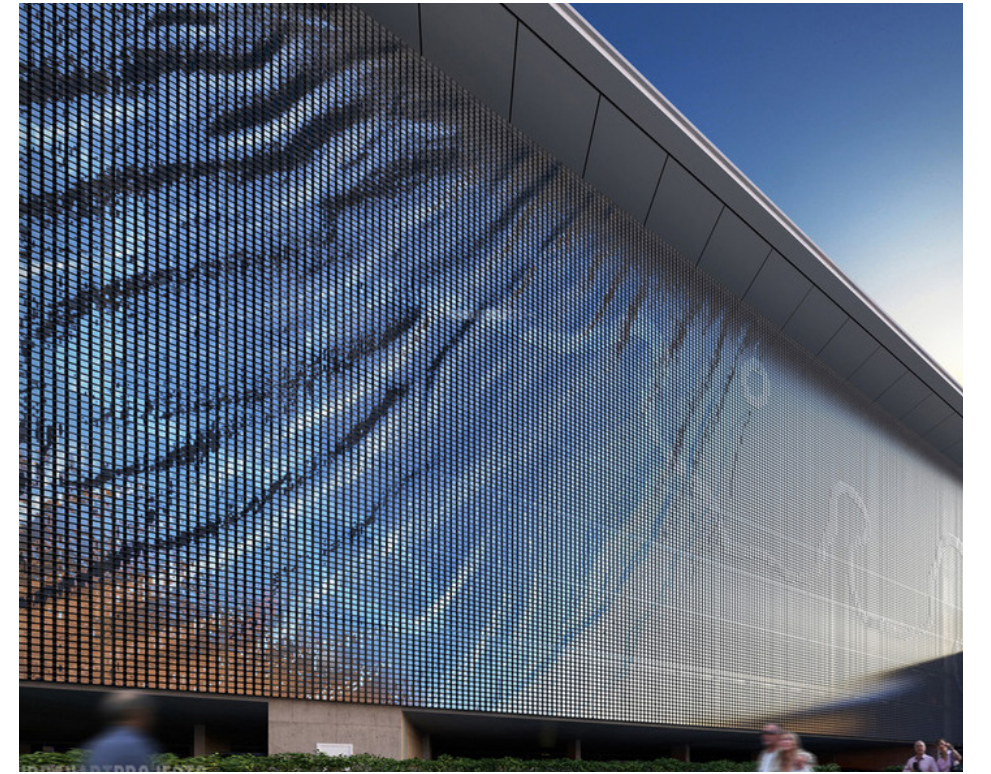
- Encourage community uses in key areas such as interfaces adjacent regional open space
- Maximize planted / green interfaces for entirety of site
- Promote connected tree canopies and promote permeability of large hardstand areas
- The lots themselves can connect to sky through sky lights and large windows to allow for natural light and air to filter through.



South Everleigh Rooftop | Yerrabingin



View of Green roofs | Research Gate



Kinetic Wall | Brisbane Airport



Grassland Flora | Grassy Plains Network



Aluminium Cladding | Design 11

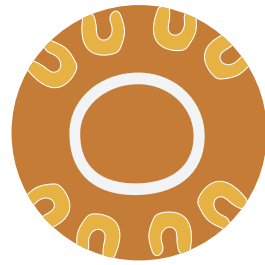


Planting Wall | Divisare

LOTS

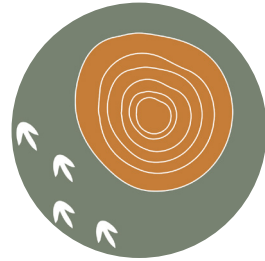
Visual Application

Design Principles



Connect to Dharug Country

- Rooftop terraces to view out to the broader Dharug landscape



Designing for Kin

- Green roofs, walls and built-form elements



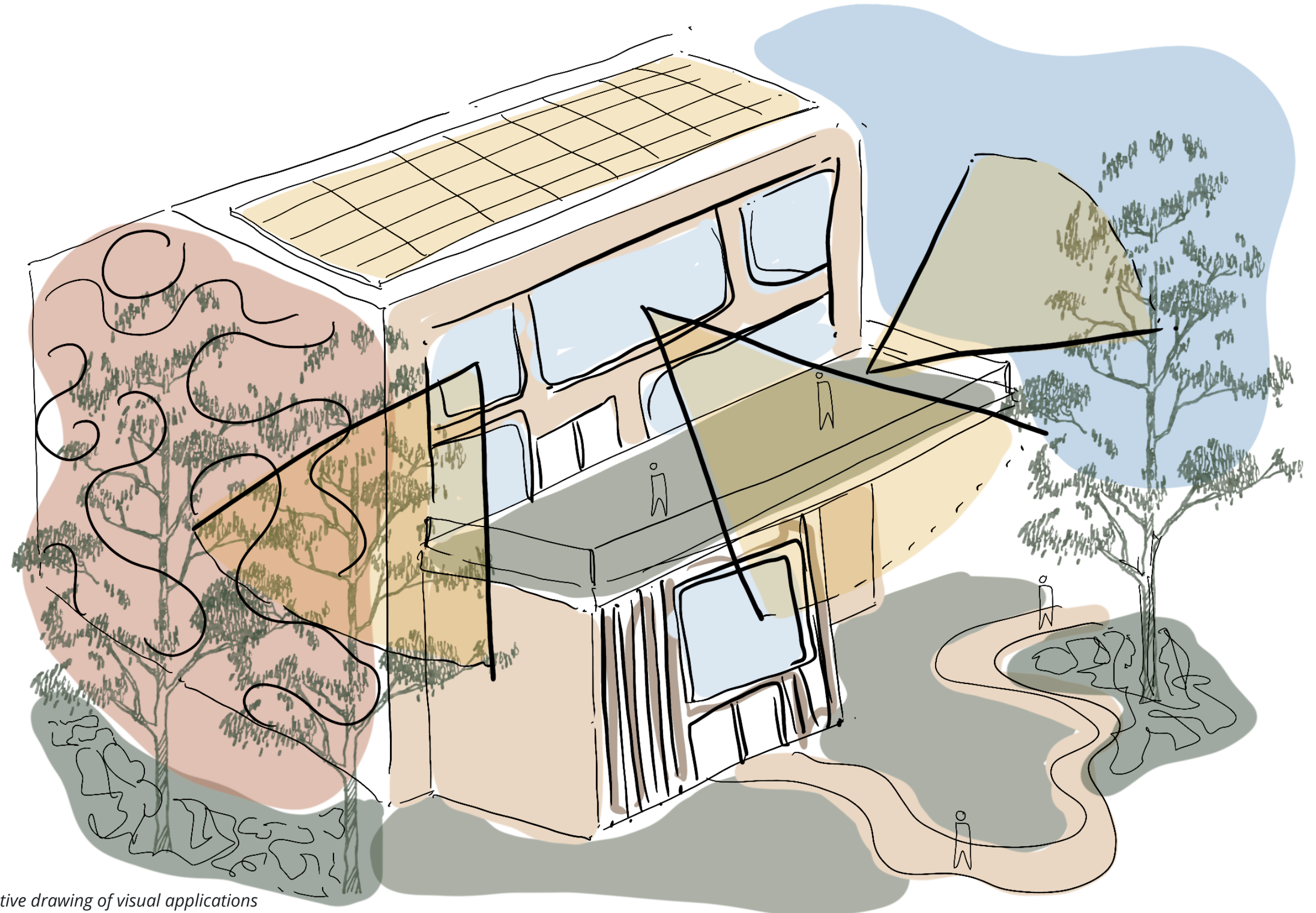
Enterprise Opportunities

- Maintenance and storytelling
- Solar Panel maintenance
- Art collaboration opportunities



Cultural Practice

- Astronomy tours
- Providing views out



Illustrative drawing of visual applications



DESIGN TEAM APPLICATION

LANDSCAPE APPROACH

Geoscapes has created a holistic landscape that focuses on caring for Country, enhancing landscape opportunities with a focus on community activation and engagement. Areas created during this phase that connect Burrah Park to the local First Nations community include; an Aboriginal cultural space for community use; various spaces for shelter, storytelling and ceremony; enterprise opportunities for local First Nations businesses; bush tucker and wildflower trails to educate the broader community; and protecting the riparian corridors.

During the detailed design phases of the project it will be great to see elements such as the playground, water play and other active zones be reflective of Dharug Country through texture, forms and colours inspired from local Non-Human Kin.

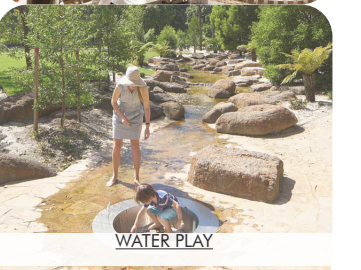
Plan (on right) by Geoscapes

PLAN KEY

- 01 DOG PARK
- 02 ADVENTURE PLAY ZONE
 - Pump Track
 - Skating Trail
- 03 BBQS & SHELTERS / AMENITIES
- 04 WILD PLAY ZONE
 - Nature Play
 - Tree Tops Play
- 05 INDIGENOUS ELEMENT
 - Shelter for School Groups
 - Yarning Circle
 - Area for Smoking Ceremonies
 - Signage leading to Archaeological Watering Hole
- 06 ARCHAEOLOGICAL WATERING HOLE
 - 30m offset
 - Viewing Platform
 - Connected to space for education
- 07 INTEGRATED VIEWING PLATFORMS
- 08 ABORIGINAL CULTURAL SPACE
 - A space to gather & meet
 - Space for both Mens & Womens business
 - Viewing platform to view Country
 - Shelter & Amenities block provided
- 09 AMPHITHEATRE
 - Gathering
 - Sight Lines across Central Core
- 10 OPEN GREEN SPACE
 - Futsal Fields
 - Spaces for Outdoor Fitness Classes
 - Car park for 20 Cars
- 11 SHARED PATHWAY
 - Connecting into wider Cycle Network
 - Loop Network for Community Park-Run Events
- 12 INDIGENOUS ELEMENT
 - Indigenous Enterprise to grow edible natives and supply to local cafes etc
- 13 WILD FLOWER GARDENS & BUSH TUCKER TRAIL
 - Area for School Groups
 - Educational Signage
 - Pizza Ovens to be used with Bush Tucker foraged
- 14 CAFE HUT
- 15 PLAYGROUND WITH WATER PLAY ELEMENTS
- 16 COMMUNITY EVENT SPACE
 - Food & Wine Festivals, Outdoor Cinema etc
- 17 NINJA FITNESS CIRCUIT
- 18 TOWN CENTRE (including)
 - Small Retail
 - Metro-style Supermarket
 - Eateries
 - Childcare facilities
 - Playground
- 19 PLANE SPOTTING PLATFORM
- 20 GREEN CONNECTIONS
 - Fire Truck access-way, utilised as walkway amenity space
- 21 RIPARIAN AREA
- 22 LOW DENSITY RESTORATION ZONE



- KEY CONSIDERATIONS:**
- Biodiversity, Zoning & Sydney Water
 - Amenities for Workers; before, during & after work
 - Weekend Activation through spaces, facilities & connections



SPACES FOR COMMUNITY EVENTS

PUMP TRACK

TREE TOPS PLAY

WATER PLAY

NINJA COURSE

SPACES FOR GROUPS

LANDSCAPE APPROACH

Aboriginal Cultural Space

Total **area** of cultural space: 11901.63 (minimum with opportunity to expand into Riparian corridor and South of road connection)

Flexible space distance from Luddeham Rd: 157 metres

Flexible space distance from M12: 133 metres

LEGEND

- ① Amenities block
- ② Shelter
- ③ Flexible space (ceremony / events)
- ④ Future Proposed Luddeham Rd Connection
- ⑤ M12
- Parking for access
- ◄.....► Proposed path network
- ▤ Expanded access



Plan (on right) by Yerrabingin

Not to scale

LANDSCAPE APPROACH

Aboriginal Cultural Space - Scale Studies

As part of the Burrah Park Development a portion of the landscape design as been dedicated to an Aboriginal Cultural Space. This was established following on from the engagement sessions we coordinated with community.

The space was recommended to be flexible for a range of uses, open for education opportunities, have amenities, be easily accessible, and was requested to be placed at the confluence of the 3 waterways.

The diagrams to the right show the scale of the cultural space in relation to local parks. It will be further developed during the more detailed design phases of the project in collaboration with community.

Diagrams (on right) by Yerrabingin



Silverwater Park, Parramatta



Bayview Park, Burwood



Ropes Edge Park, Ropes Crossing



LANDSCAPE APPROACH

Aboriginal Cultural Space - Important Inclusions



Eco-toilets



Community Shelter



Flexible space for gathering



Informal pathways through landscape



Open space for cultural education



Space for community planting



Access to Cosgroves Creek



Habitat and animal care

ARCHITECTURE APPROACH

NettletonTribe have looked at the Elements of Country and established ways to celebrate and include them throughout the built form. By doing this they are proposing a unique set of buildings that create an experience for people walking by or working within the building.

Facade treatment has been focussed upon and is inspired by the surrounding landscape and Country narratives. Colours, textures and forms have been derived from the local geology, plant species and are connected to Sky Country through reflection and celebrating the movement and patterns of Wind Country.



MOVE WITH COUNTRY

- Celebrating country through precinct naming
- Telling stories of country through art

NON-HUMAN KIN COUNTRY

- Celebrating non-human kin with living green walls
- Telling stories of kin through art

WATER COUNTRY

- Celebrating water with rain chains and rain gardens
- Supporting water country with permeable surfaces

DEEP COUNTRY

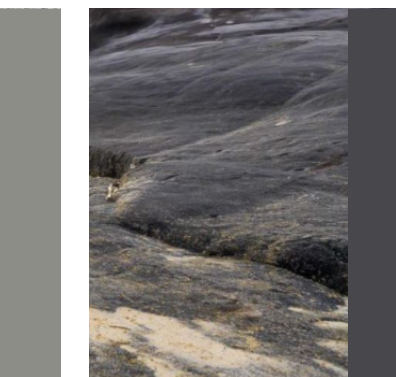
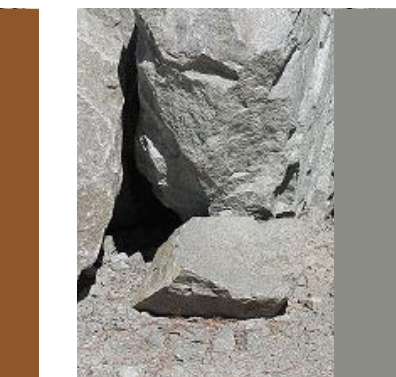
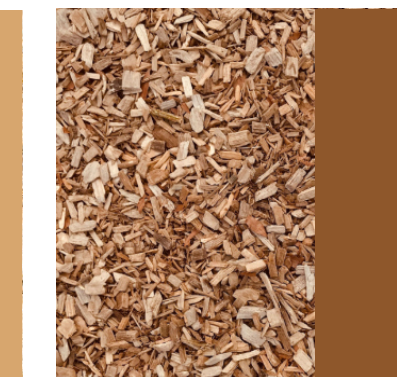
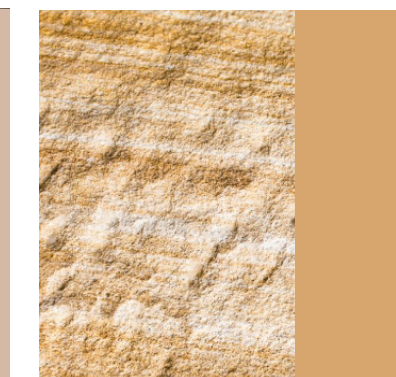
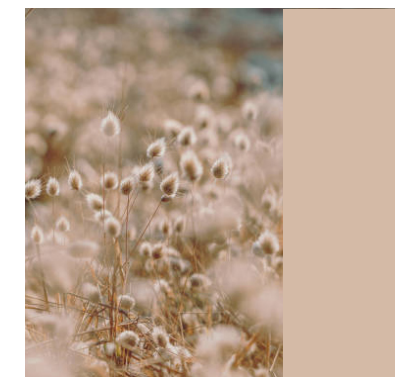
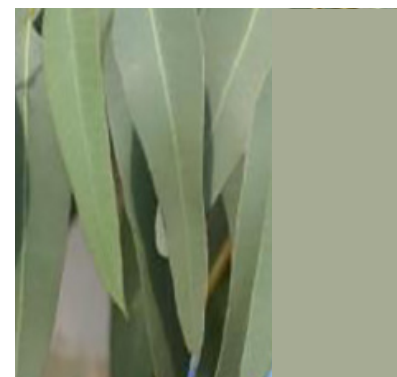
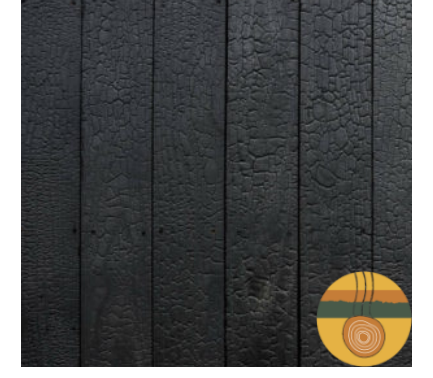
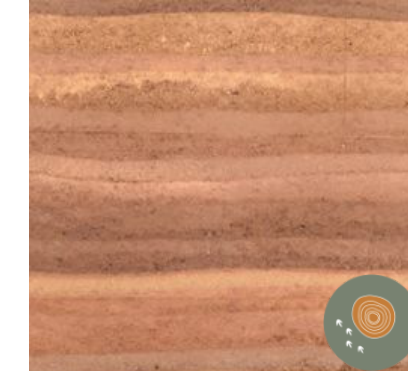
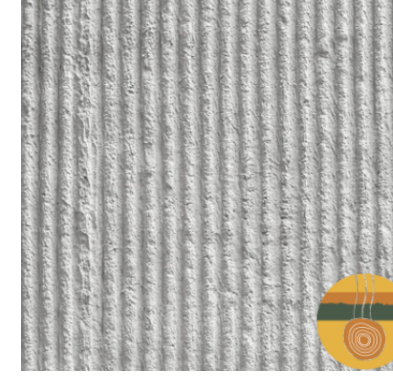
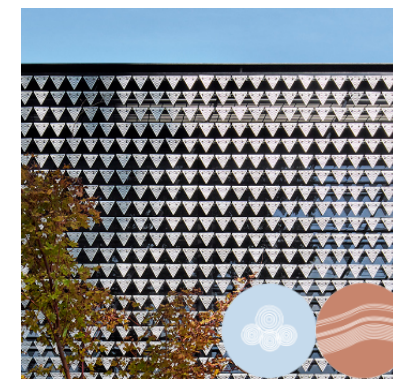
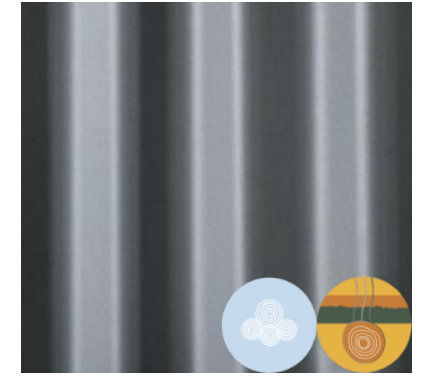
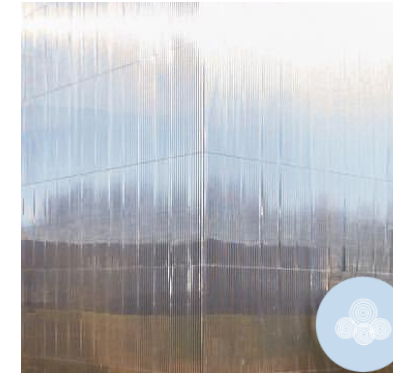
- Celebrating deep country through Dharug ochre tones

SKY COUNTRY

- Celebrating sky through reflective glazing translucent elements and perforated facades

WIND COUNTRY

- Celebrating wind through active facades, weathered elements and green facades



Page (on right) by NettletonTribe

ARCHITECTURE APPROACH

The buildings themselves are being proposed to be part of the broader system across the site instead of typically being interruptive.

The focus has been around rainwater flow, collection and distribution. Directing water down into rain tanks for re use or down rain chains into raingardens to clean before entering the broader creek system.

There has also been a focus around providing a rooftop garden space for workers to connect with their surrounding environment and know where they are on Country.

Page (on right) by NettletonTribe



SOLAR PANELS

Utilizing our powerful skies to soften our overall footprint.



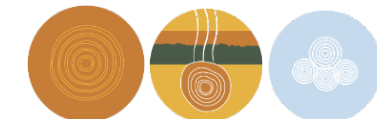
TRANSLUCENT ROOF SHEETING

Embracing the sky to naturally light internal spaces and connect occupants to the external elements.



RAIN CHAINS

Celebrating the passage of water from roof to creek and acknowledging the cultural significance of water throughout the region.



CULTURAL SPACES

Enduring custodianship of country with landscaped areas for Dharug storytelling and ceremony.



LANDSCAPE BUFFERS

Vast green spaces and landscaped interfaces around built forms to immerse people in country and naturally highlight the views to the Blue Mountains and prevailing winds from



BLUE MOUNTAINS



GREEN ROOFS

Bringing Country, landscape and built form together to create rooftop gardens that double as cultural landscape art that's viewed from above,



RAINWATER REUSE

Collecting and using rainwater where possible to intergrate built forms into natural, sustainable water cycles.



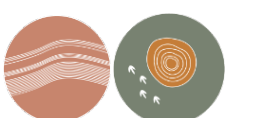
PERMIABLE SURFACES

Utilizing permeable paving systems to soften parking footprints and pay respects to natural water flow.



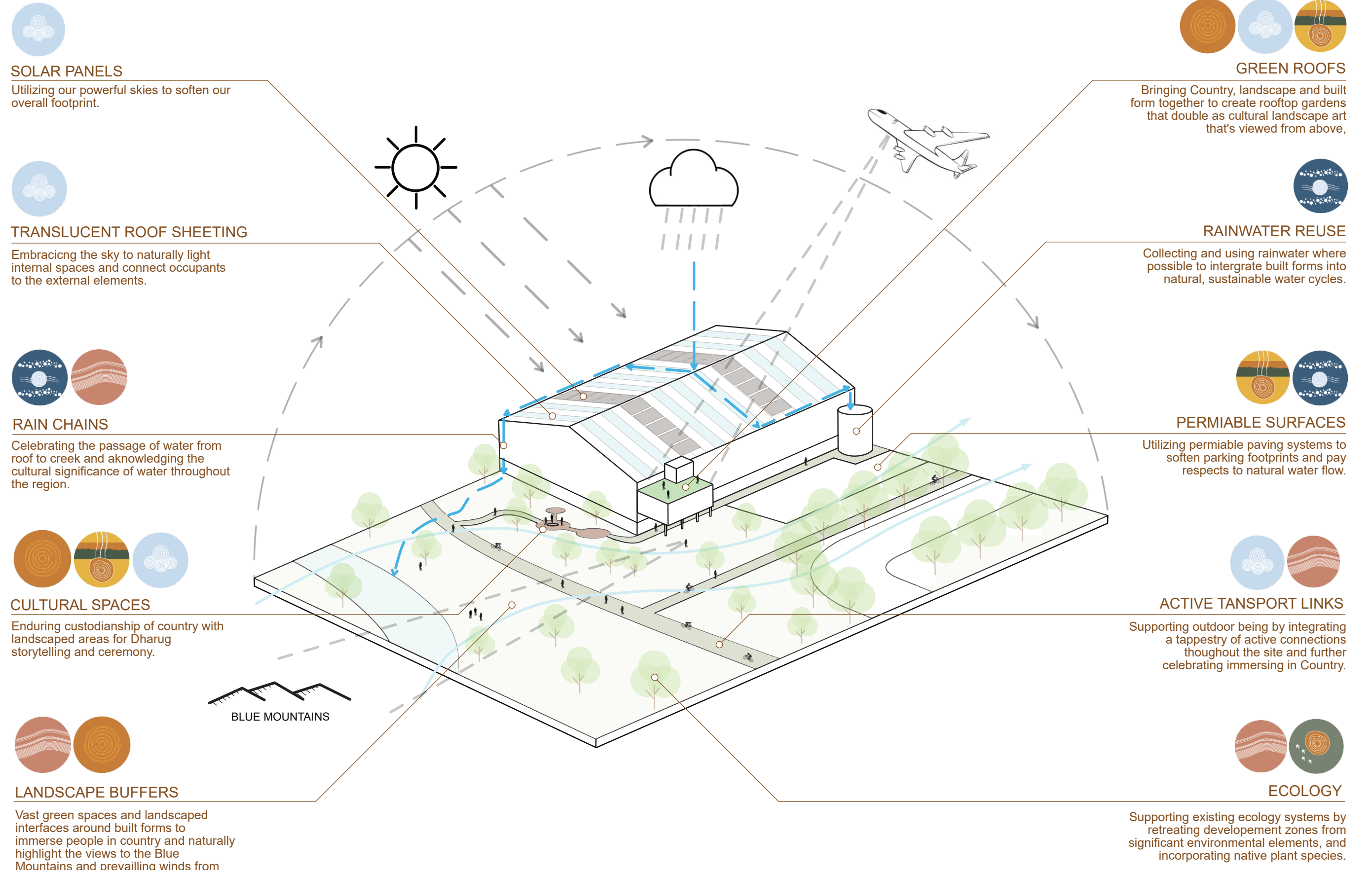
ACTIVE TRANSPORT LINKS

Supporting outdoor being by integrating a tapestry of active connections throughout the site and further celebrating immersing in Country.



ECOLOGY

Supporting existing ecology systems by retreating development zones from significant environmental elements, and incorporating native plant species.





NEXT STEPS

ONGOING OPPORTUNITIES

LANGUAGE AND WAYFINDING WORKSHOPS

Engaging and collaborating with Dharug First Nations artists and creators to discuss art and wayfinding opportunities. This would result in an artist selection process with Traditional Custodians and continual collaboration for the project.



SOIL REGENERATION

During Stage one, regenerate the soil using a leaky weir system to improve soil fertility and biodiversity capability. This can be an opportunity to test the success of species on site, grow native food crop to sell and connect with community through this process.



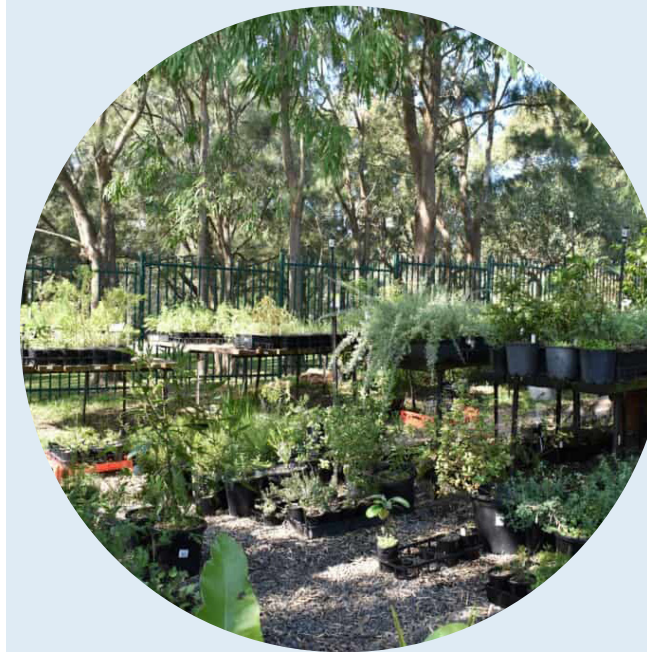
TURNING OF THE SOIL CEREMONY AND CULTURAL BURN

Before earthworks and construction begins, organising with Dharug Traditional Custodians to come on to site with their community. This allows for cultural practice and ceremony to occur and to embed the importance of cultural connection and care for Country to the space.



ENGAGEMENT WITH FIRST NATIONS NURSERIES AND CONSTRUCTION COMPANIES

There are many opportunities for First Nations enterprises to have a base on this site. Before construction occurs, consider engaging with the Dharug community to establish connections with First Nations builders, landscapers etc. to participate in the creation of the site. This follows on to post construction and land management.



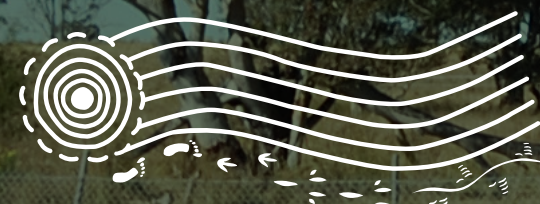
COMMUNITY PLANTING DAY

Together with community planting the trees and species within the parklands, streets, open space, lots etc. to continue custodianship and develop further connection to the development of the site.





APPENDIX



YERRABINGIN

WE ARE YERRABINGIN. WE WALK TOGETHER.