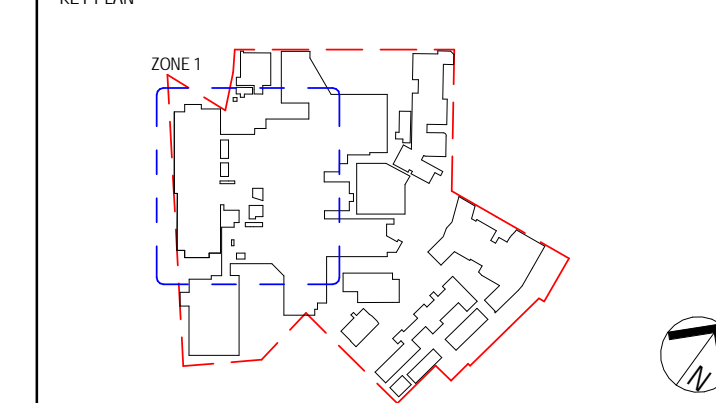


NOTES:

- SANITARY STACK, RELIEF VENTS AND DOWNPIPES AGAINST COLUMNS (TYPICAL).
- REFER TO ARCHITECTURAL DRAWINGS FOR LOCATION OF PROPOSED DOWNPIPES.

REV	DATE	DESIGN	REVISED	APPROVED	AMENDMENT
3	29/01/15	MP	RE		100% SCHEMATIC DESIGN
2	07/01/15	MP	RE		100% SCHEMATIC DESIGN
1	12/01/14	MP			80% SCHEMATIC DESIGN

KEY PLAN



PROJECT MANAGER



CLIENT



ACOR Consultants Pty Ltd
 Level 1, 24 Falcon Street
 Crows Nest NSW 2065
 T +61 2 9438 5098

CONSULTANTS
 ENGINEERS | MANAGERS | INFRASTRUCTURE | PLANNERS | DEVELOPMENT CONSULTANTS

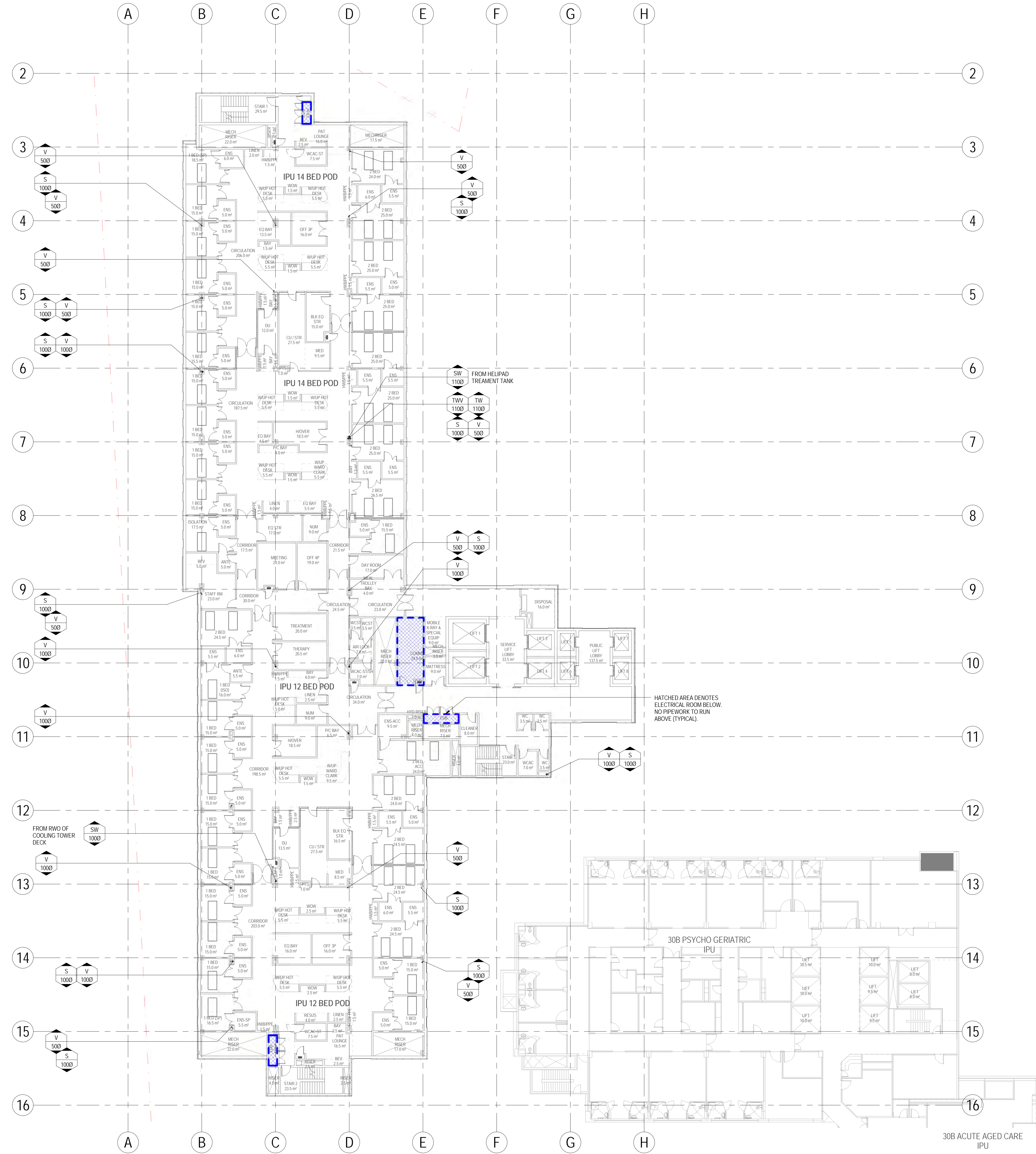
PROJECT
ST GEORGE HOSPITAL ACUTE SERVICES BUILDING REDEVELOPMENT
 GRAY ST KOGARAH NSW 2217

TITLE
HYDRAULICS LEVEL 7 DRAINAGE

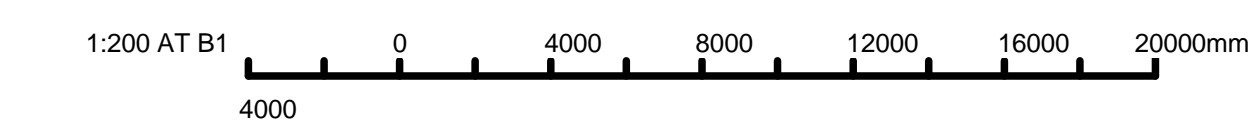
DRAWING STATUS
SCHEMATIC DESIGN

DRAWN MP	DRAWING CHECK RE
DESIGNED RE	DESIGN REVIEW RE
REVIEWED RE	DATE 29/01/15
APPROVED	DATE

SCALE
 1:200
 DRAWING NO.
 SY140217-NEWB-HY-DG-0108



HATCHED AREA DENOTES ELECTRICAL ROOM BELOW. NO PIPEWORK TO RUN ABOVE (TYPICAL).

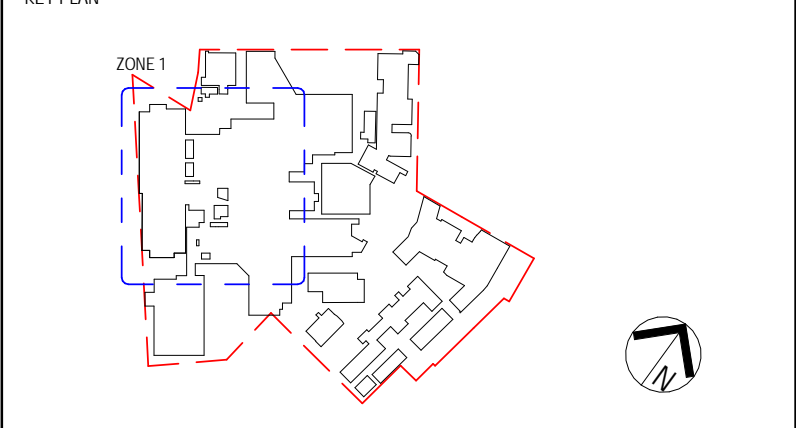




NOTES:

- SANITARY STACK, RELIEF VENTS AND DOWNPIPES AGAINST COLUMNS (TYPICAL).
- REFER TO ARCHITECTURAL DRAWINGS FOR LOCATION OF PROPOSED DOWNPIPES.

REV	DATE	BY	CHKD	APPD	AMENDMENT
3	29/01/15	MP	RE		100% SCHEMATIC DESIGN
2	07/01/15	MP	RE		100% SCHEMATIC DESIGN
1	17/01/14	MP			40% SCHEMATIC DESIGN ISSUE



ACOR Consultants Pty Ltd
Level 1, 24 Falcon Street
Crowns Nest NSW 2065
T +61 2 9438 5098

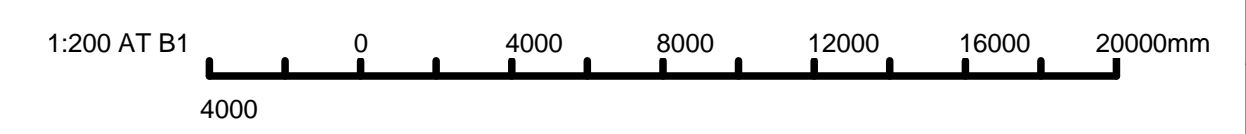
CONSULTANTS ENGINEERS | MANAGERS | INFRASTRUCTURE | PLANNERS | DEVELOPMENT CONSULTANTS

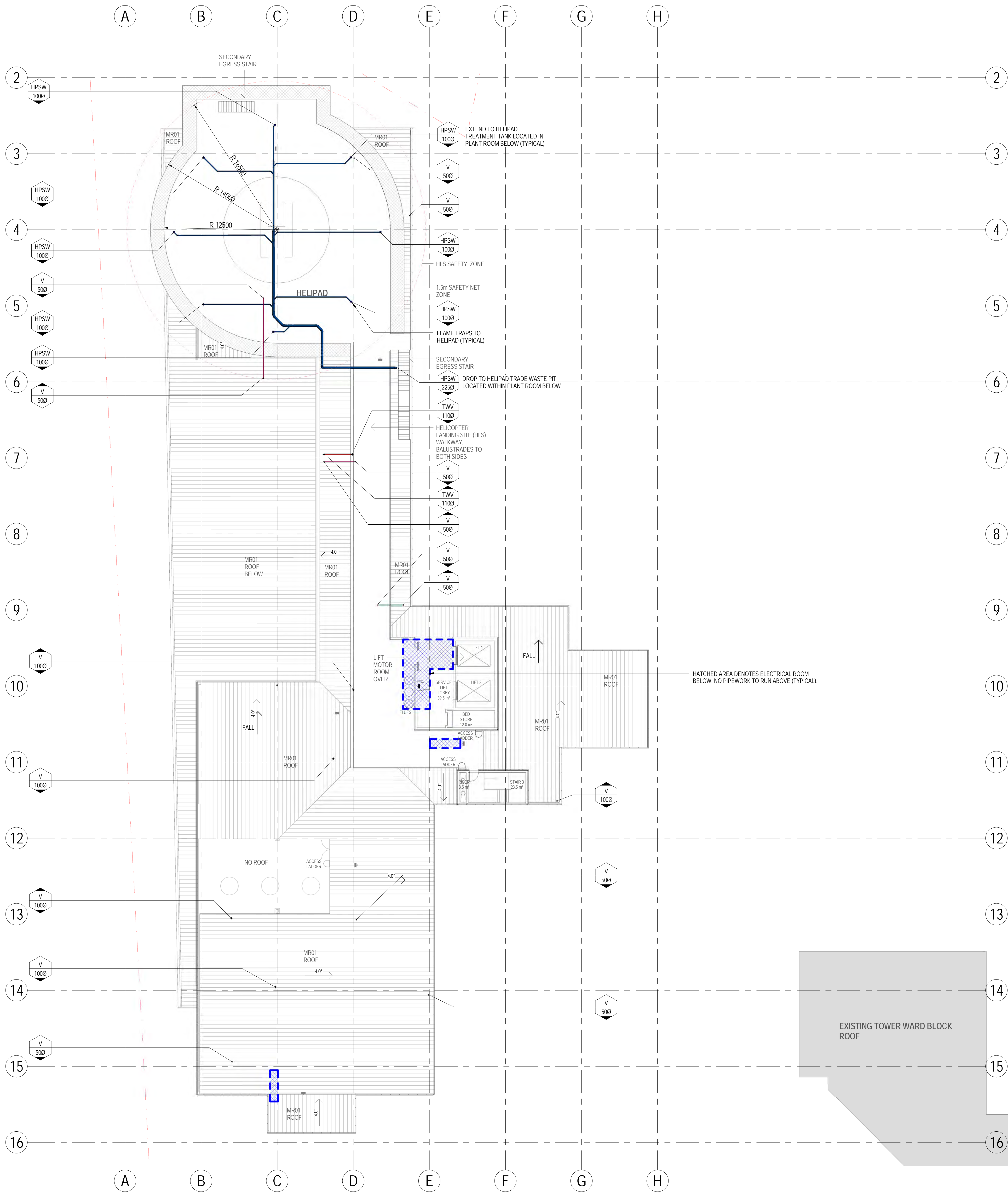
PROJECT
ST GEORGE HOSPITAL ACUTE SERVICES BUILDING REDEVELOPMENT
GRAY ST KOGARAH NSW 2217

TITLE
HYDRAULICS LEVEL 8 DRAINAGE

DRAWING STATUS
SCHEMATIC DESIGN

DRAWN MP	DRAWING CHECK RE
DESIGNED RE	DESIGN REVIEW RE
REVIEWED RE	DATE 29/01/15
APPROVED	DATE

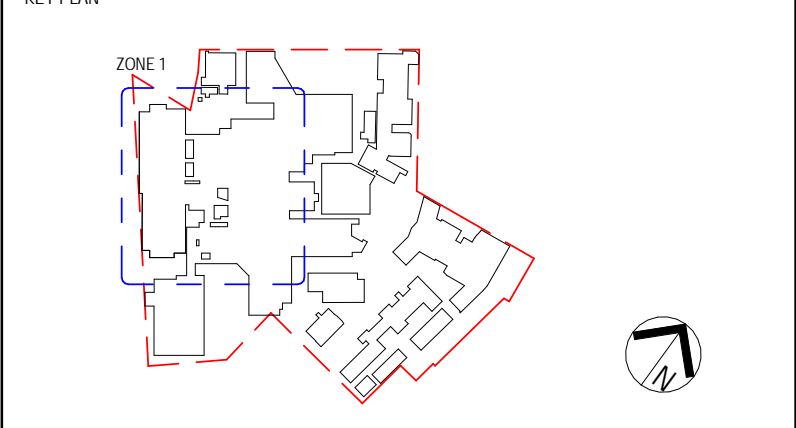




NOTES:

- SANITARY STACK, RELIEF VENTS AND DOWNPIPES AGAINST COLUMNS (TYPICAL).
- REFER TO ARCHITECTURAL DRAWINGS FOR LOCATION OF PROPOSED DOWNPIPES.

REV	DATE	DESIGN	REVISED	APPROVED	AMENDMENT
3	29/01/15	MP	RE		100% SCHEMATIC DESIGN
2	07/01/15	MP	RE		100% SCHEMATIC DESIGN
1	12/01/14	MP			80% SCHEMATIC DESIGN ISSUE



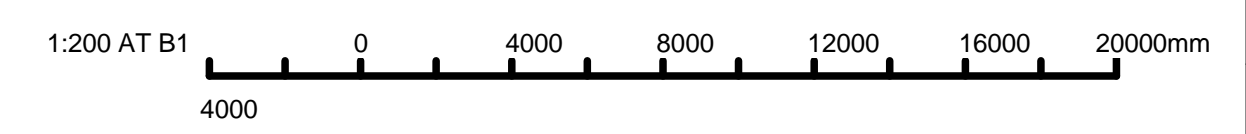
ACOR CONSULTANTS
ACOR Consultants Pty Ltd
 Level 1, 24 Falcon Street
 Crows Nest NSW 2065
 T +61 2 9438 5098

PROJECT
ST GEORGE HOSPITAL ACUTE SERVICES BUILDING REDEVELOPMENT
 GRAY ST KOGARAH NSW 2217

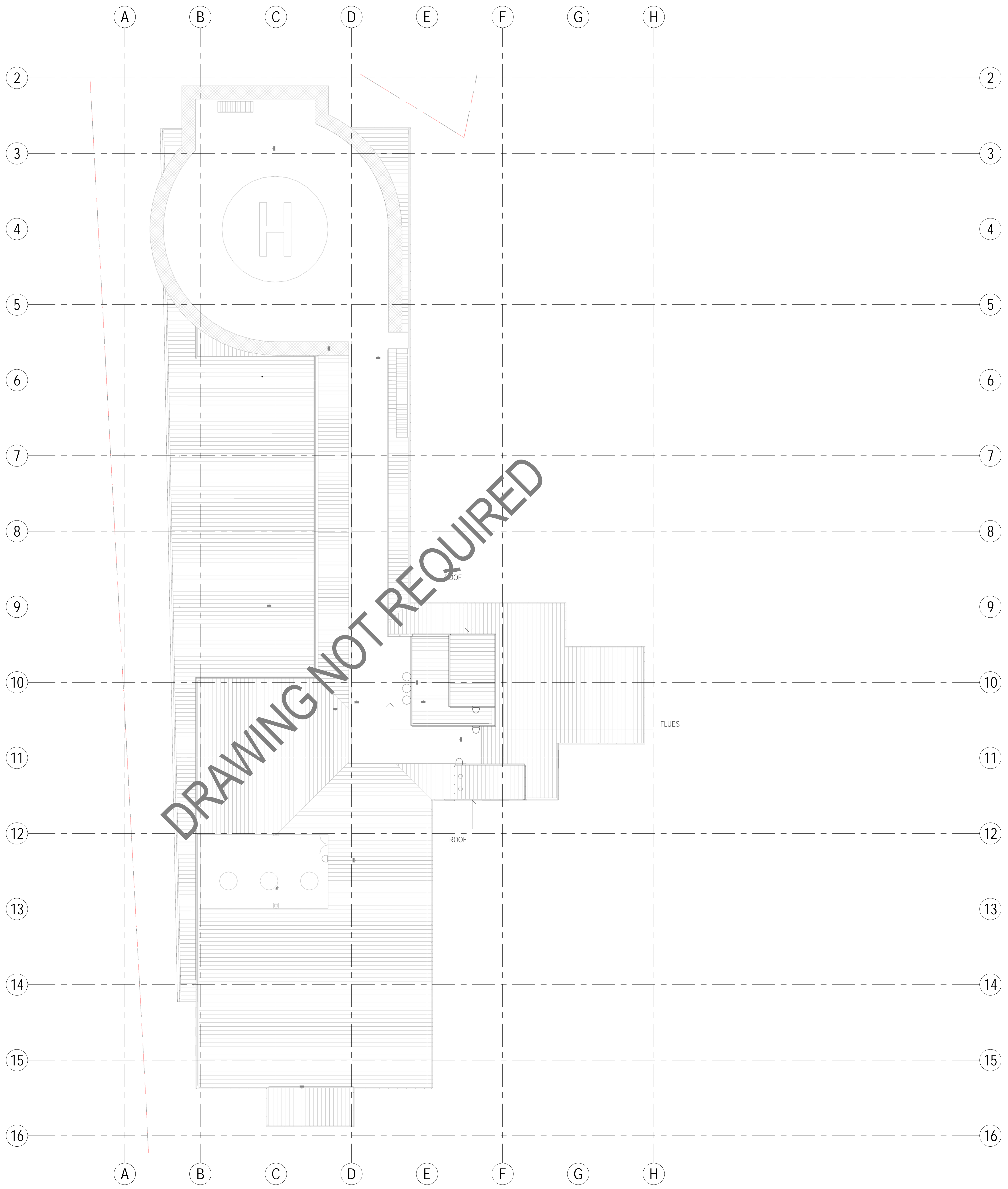
TITLE
HYDRAULICS LEVEL 9 DRAINAGE

DRAWING STATUS
SCHEMATIC DESIGN

DRAWN MP	DRAWING CHECK RE
DESIGNED RE	DESIGN REVIEW RE
REVIEWED RE	DATE 29/01/15
APPROVED	DATE



E:\Documents\Revit\2014\SY140217_STG_RVT_HY_CENTRAL_mpression.rvt
29/01/2015 1:19:53 PM

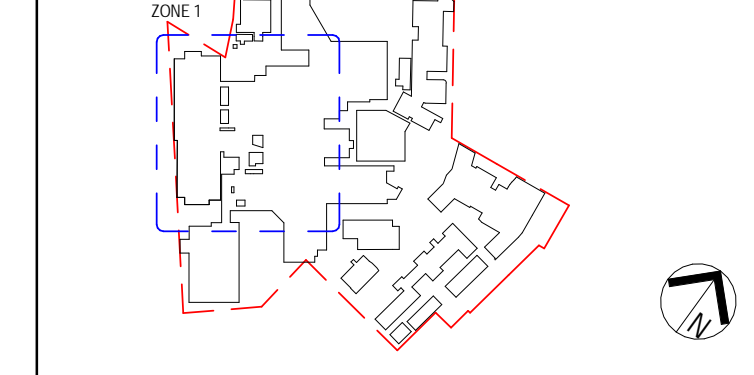


NOTES:

1. REFER TO ARCHITECTURAL DRAWINGS FOR LOCATION OF PROPOSED DOWNPIPES.

3	29/01/15	MP	RE	100% SCHEMATIC DESIGN
2	07/01/15	MP	RE	100% SCHEMATIC DESIGN
1	12/10/14	MP	RE	80% SCHEMATIC DESIGN ISSUE

REV	DATE	DESIGN	REVISED	APPROVED	AMENDMENT
-----	------	--------	---------	----------	-----------



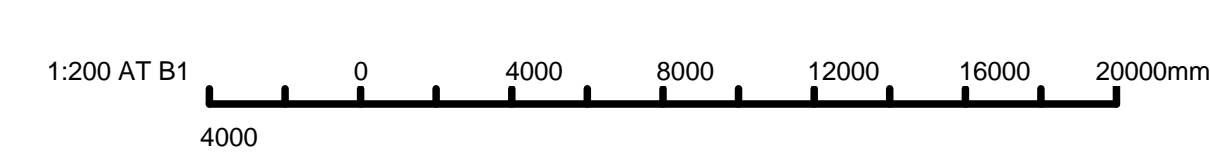
ACOR CONSULTANTS
ACOR Consultants Pty Ltd
 Level 1, 24 Falcon Street
 Crows Nest NSW 2065
 T +61 2 9438 5098

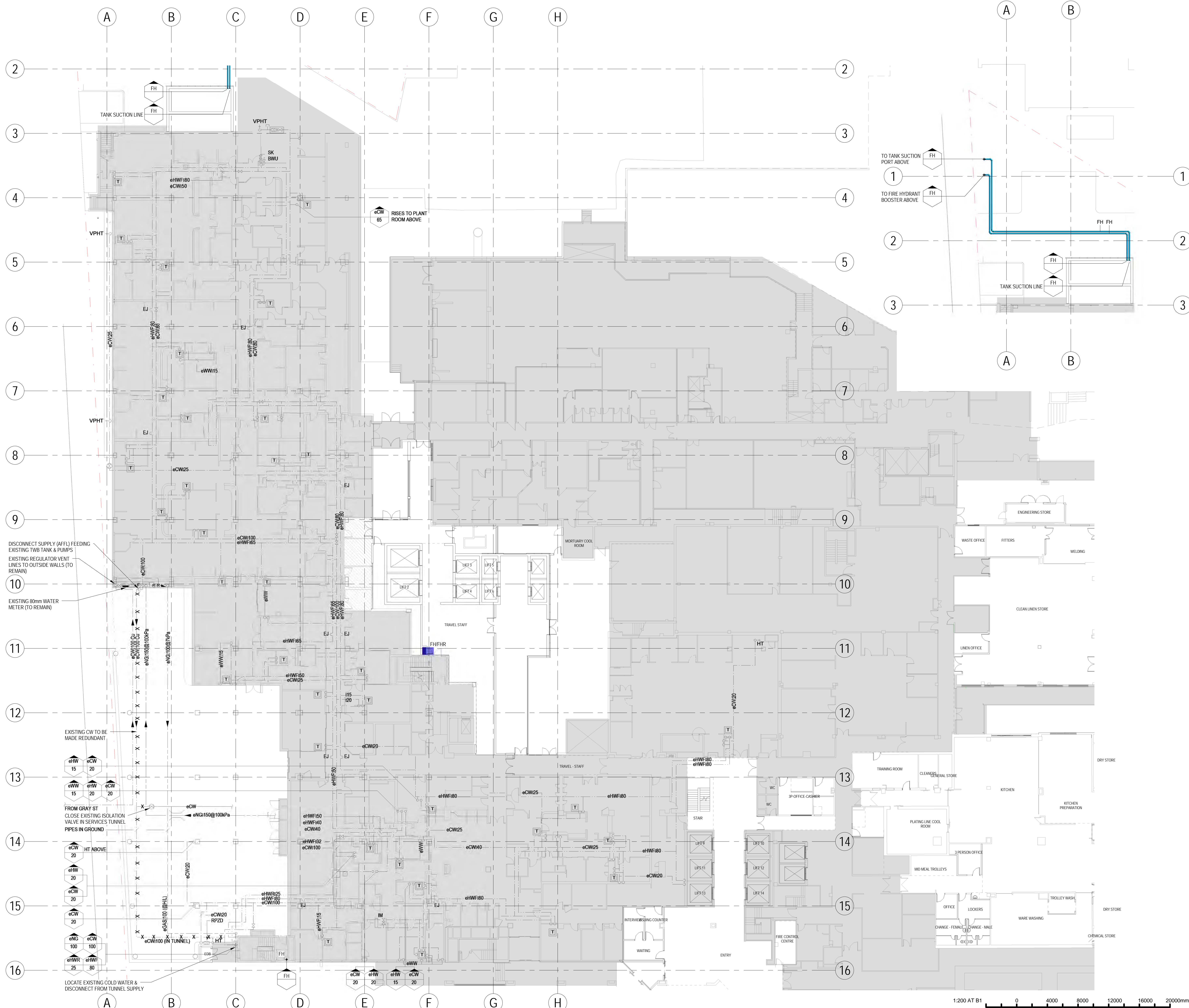
PROJECT
**ST GEORGE HOSPITAL
 ACUTE SERVICES BUILDING
 REDEVELOPMENT**
 GRAY ST KOGARAH NSW 2217

TITLE
**HYDRAULICS
 ROOF LEVEL DRAINAGE**

DRAWING STATUS
SCHEMATIC DESIGN

DRAWN MP	DRAWING CHECK RE
DESIGNED RE	DESIGN REVIEW RE
REVIEWED RE	DATE 29/01/15
APPROVED	DATE





DISCONNECT SUPPLY (AFL) FEEDING EXISTING TWB TANK & PUMPS EXISTING REGULATOR VENT LINES TO OUTSIDE WALLS (TO REMAIN)

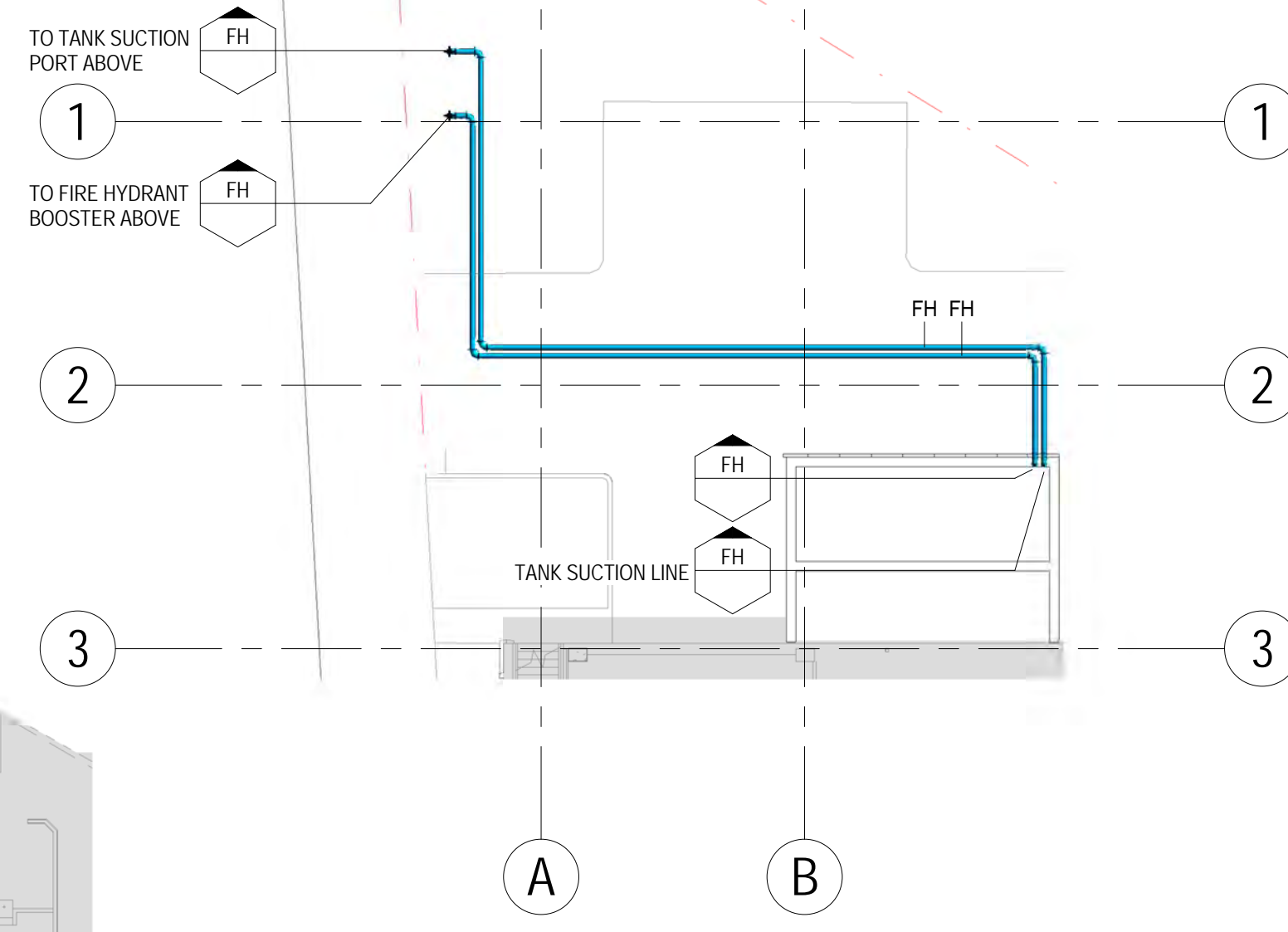
EXISTING 80mm WATER METER (TO REMAIN)

EXISTING CW TO BE MADE REDUNDANT

FROM GRAY ST CLOSE EXISTING ISOLATION VALVE IN SERVICES TUNNEL PIPES IN GROUND

HT ABOVE

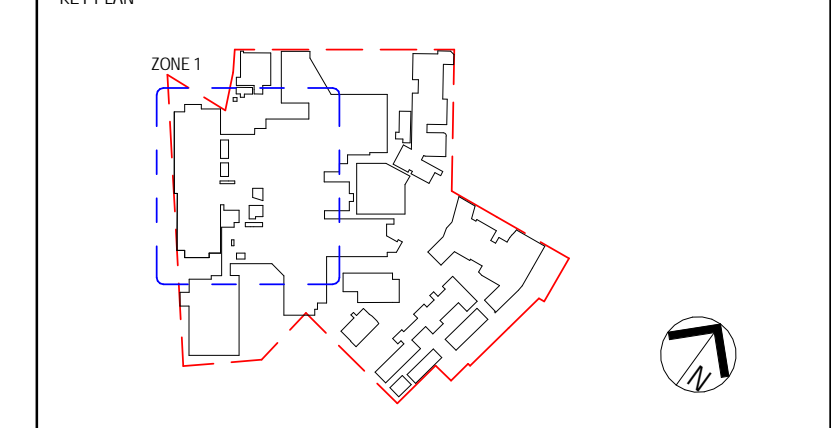
LOCATE EXISTING COLD WATER & DISCONNECT FROM TUNNEL SUPPLY



NOTES:

- FHR/FH CUPBOARD LOCATIONS TO SUIT FIRE COMPARTMENTS.

REV	DATE	DRAWN	REV'D	APP'D	AMENDMENT
3	29/01/15	MP	RE		100% SCHEMATIC DESIGN
2	07/01/15	MP	RE		100% SCHEMATIC DESIGN
1	12/01/14	MP			80% SCHEMATIC DESIGN ISSUE



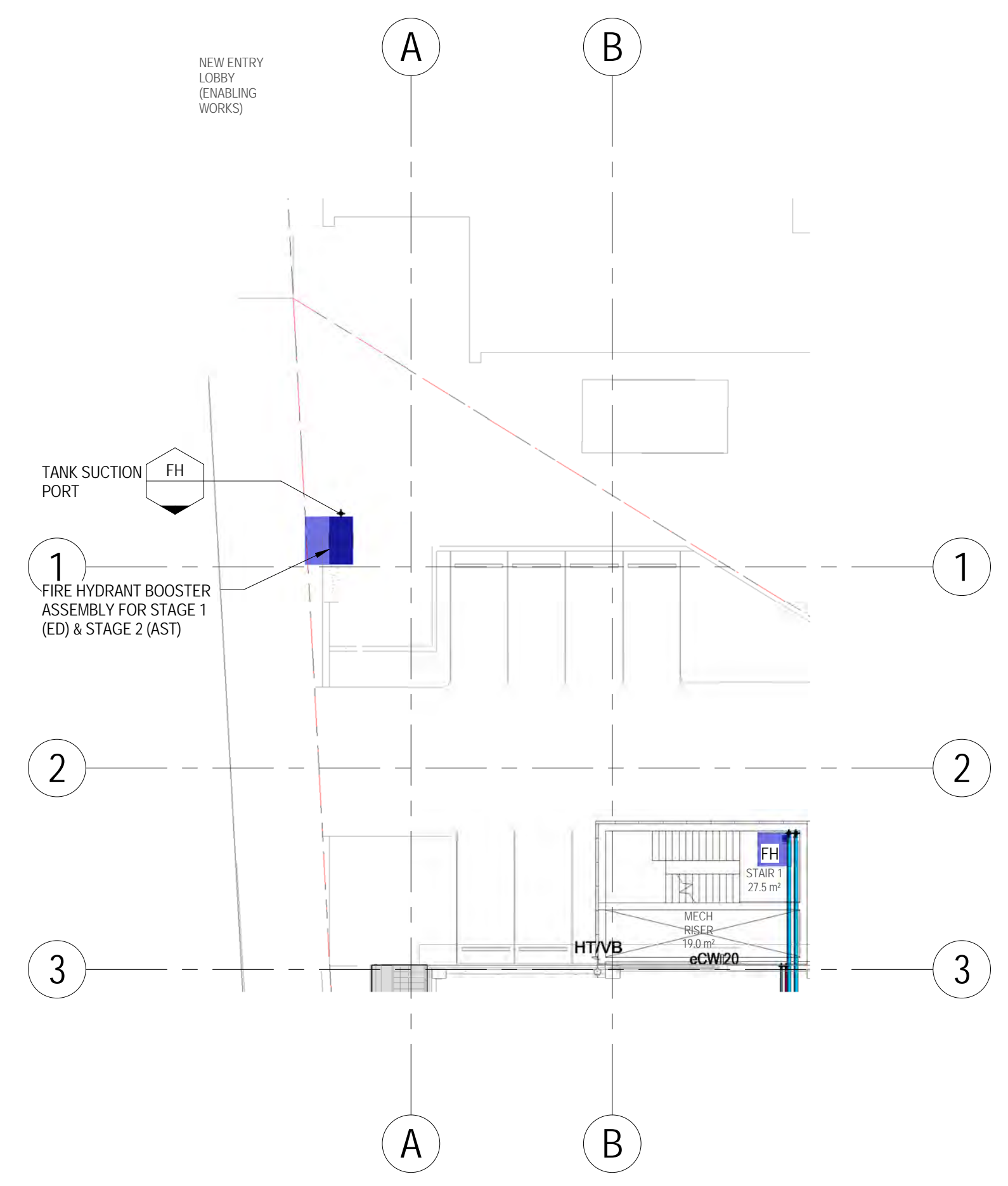
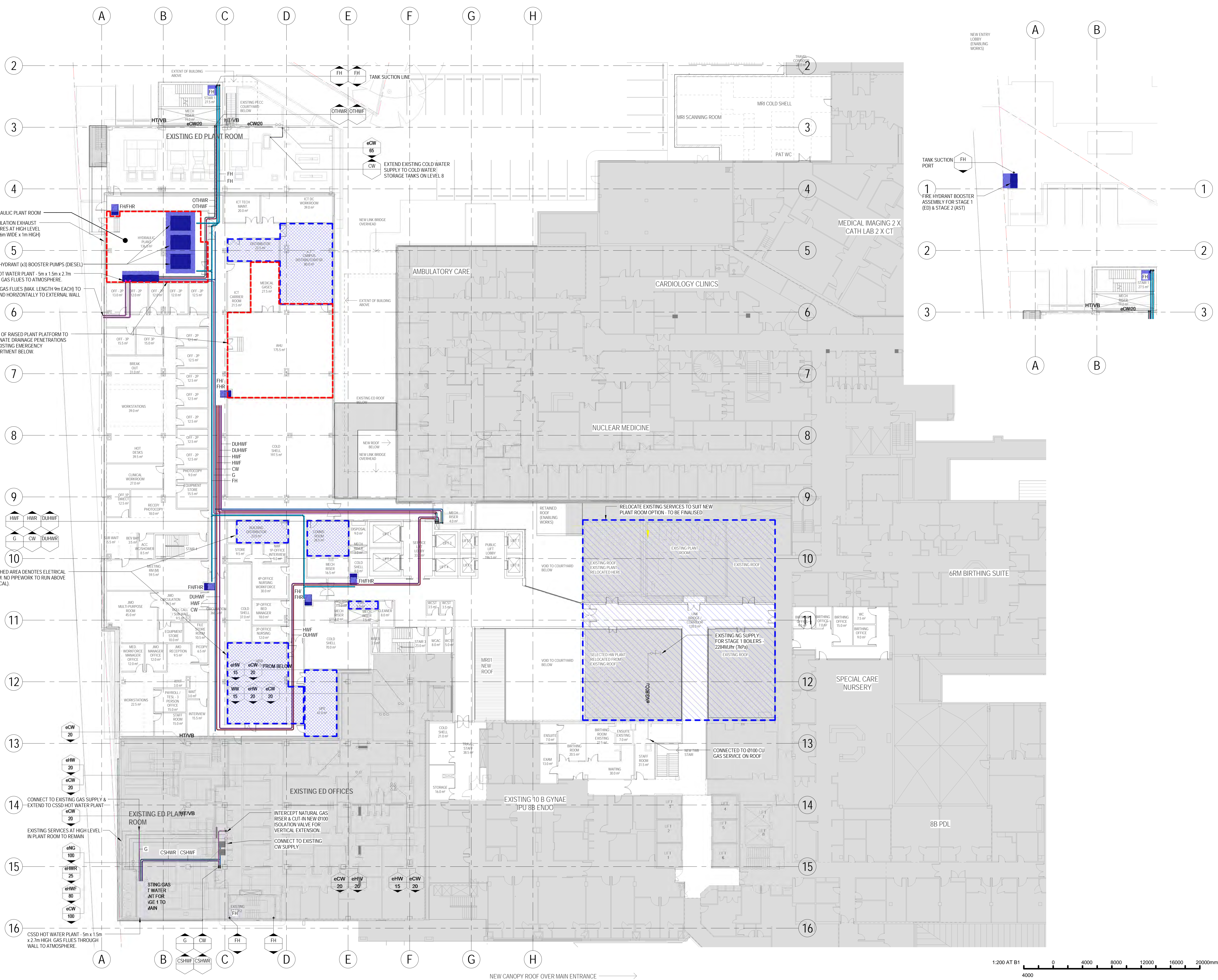
ACOR CONSULTANTS ACOR Consultants Pty Ltd
 Level 1, 24 Falcon Street
 Crows Nest NSW 2065
 T +61 2 9438 5098

PROJECT
ST GEORGE HOSPITAL ACUTE SERVICES BUILDING REDEVELOPMENT
 GRAY ST KOGARAH NSW 2217

TITLE
HYDRAULICS GROUND FLOOR WATER & GAS

DRAWING STATUS	
SCHEMATIC DESIGN	
DRAWN MP	DRAWING CHECK RE
DESIGNED RE	DESIGN REVIEW RE
REVIEWED RE	DATE 29/01/15
APPROVED RE	DATE
SCALE 1:200	DRAWING NO. SY140217-NEWB-HY-DG-0201
	REV 3

E:\Documents\Revit\2014\SY140217_STG_RVT_HY_CENTRAL_impresion.rvt
29/01/2015 1:21:03 PM

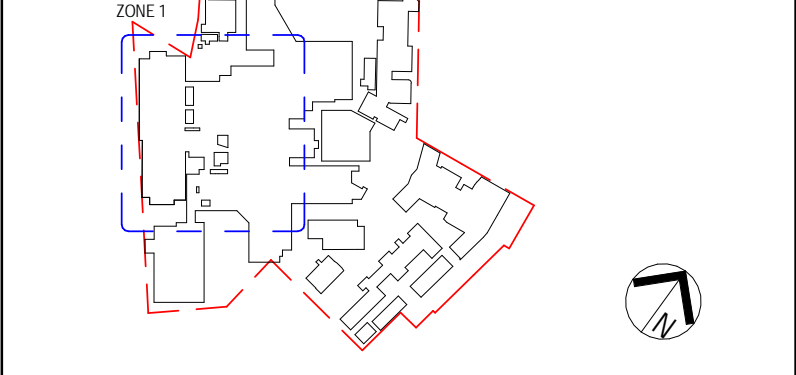


NOTES:

1. FHR/FH CUPBOARD LOCATIONS TO SUIT FIRE COMPARTMENTS.

REV	DATE	BY	CHKD	REASON
3	29/01/15	MP	RE	100% SCHEMATIC DESIGN
2	07/01/15	MP	RE	100% SCHEMATIC DESIGN
1	12/01/14	MP	RE	80% SCHEMATIC DESIGN ISSUE

KEY PLAN



PROJECT MANAGER



CLIENT



ACOR CONSULTANTS
ACOR Consultants Pty Ltd
 Level 1, 24 Falcon Street
 Crows Nest NSW 2065
 T +61 2 9438 5098

PROJECT
ST GEORGE HOSPITAL
ACUTE SERVICES BUILDING
REDEVELOPMENT
 GRAY ST KOGARAH NSW 2217

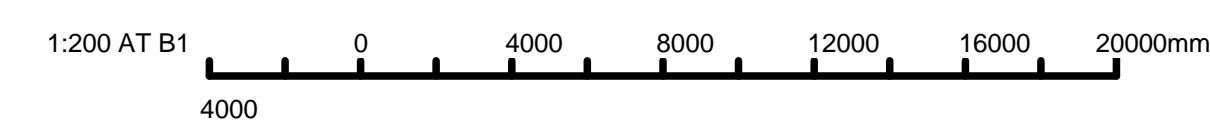
TITLE
HYDRAULICS
LEVEL 1 WATER & GAS

DRAWING STATUS

SCHEMATIC DESIGN

DRAWN	DESIGNED	REVIEWED	DATE
MP	RE	RE	29/01/15
RE	RE	RE	DATE

SCALE: 1:200
 DRAWING NO: SY140217-NEWB-HY-DG-0202
 REV: 3



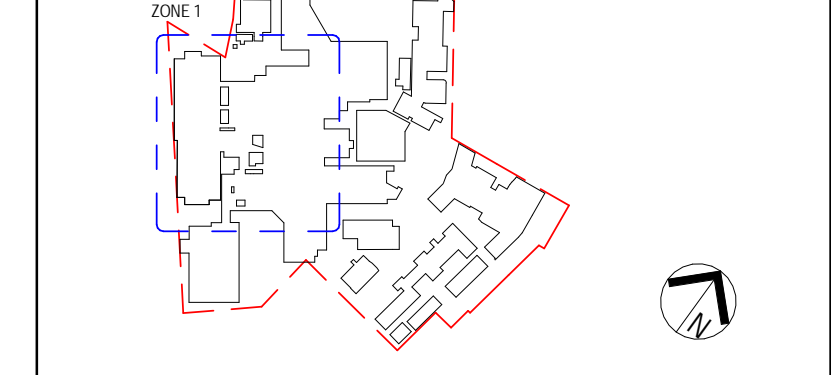


NOTES:

1. FHR/FH CUPBOARD LOCATIONS TO SUIT FIRE COMPARTMENTS.

3	29/01/15	MP	RE	100% SCHEMATIC DESIGN
2	07/01/15	MP	RE	100% SCHEMATIC DESIGN
1	17/01/14	MP	RE	80% SCHEMATIC DESIGN

KEY PLAN



PROJECT MANAGER



CLIENT



ACOR Consultants Pty Ltd
Level 1, 24 Falcon Street
Crows Nest NSW 2065
T +61 2 9438 5098

CONSULTANTS ENGINEERS | MANAGERS | INFRASTRUCTURE | PLANNERS | DEVELOPMENT CONSULTANTS

PROJECT
ST GEORGE HOSPITAL ACUTE SERVICES BUILDING REDEVELOPMENT
GRAY ST KOGARAH NSW 2217

TITLE
HYDRAULICS LEVEL 2 WATER & GAS

DRAWING STATUS
SCHEMATIC DESIGN

DRAWN	MP	DRAWING CHECK	RE
DESIGNED	RE	DESIGN REVIEW	
REVIEWED		DATE	29/01/15
APPROVED		DATE	

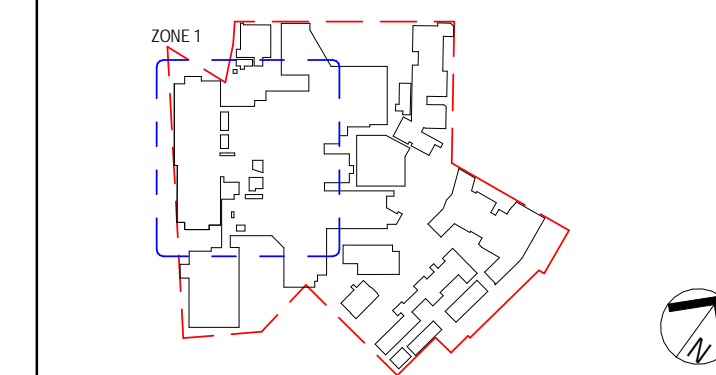
SCALE
1:200
DRAWING NO.
SY140217-NEWB-HY-DG-0203

NOTES:

1. FHR/FH CUPBOARD LOCATIONS TO SUIT FIRE COMPARTMENTS.

REV	DATE	DESIGN	REVISED	APPROVED	AMENDMENT
3	29/01/15	MP	RE		100% SCHEMATIC DESIGN
2	07/01/15	MP	RE		100% SCHEMATIC DESIGN
1	17/01/14	MP			80% SCHEMATIC DESIGN ISSUE

KEY PLAN



PROJECT MANAGER



CLIENT



ACOR CONSULTANTS Pty Ltd
 Level 1, 24 Falcon Street
 Crows Nest NSW 2065
 T +61 2 9438 5098

ENGINEERS | MANAGERS | INFRASTRUCTURE | PLANNERS | DEVELOPMENT CONSULTANTS

PROJECT
ST GEORGE HOSPITAL ACUTE SERVICES BUILDING REDEVELOPMENT

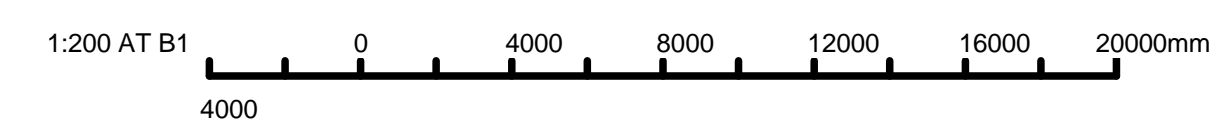
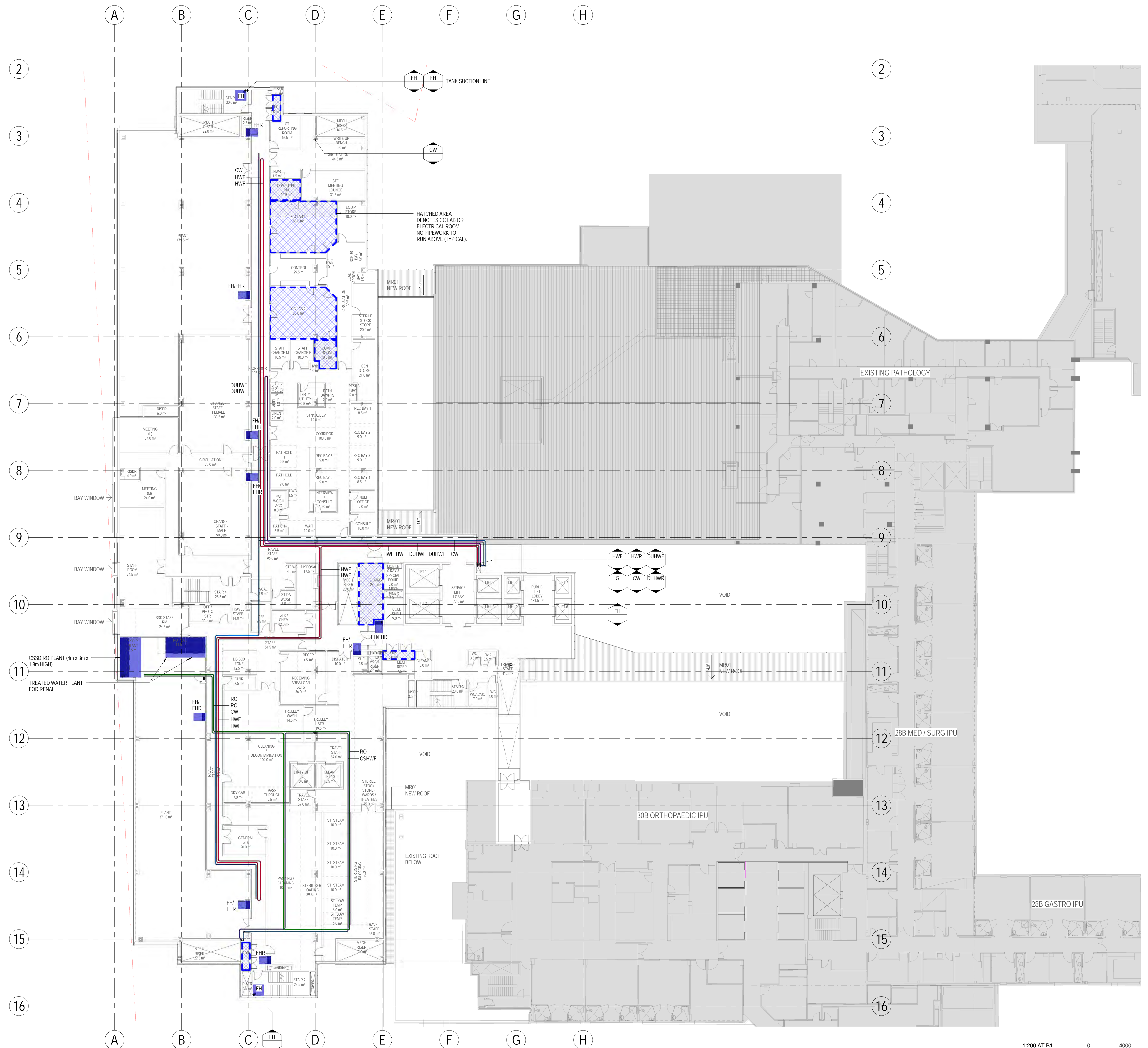
GRAY ST KOGARAH NSW 2217

TITLE
HYDRAULICS LEVEL 3 WATER & GAS

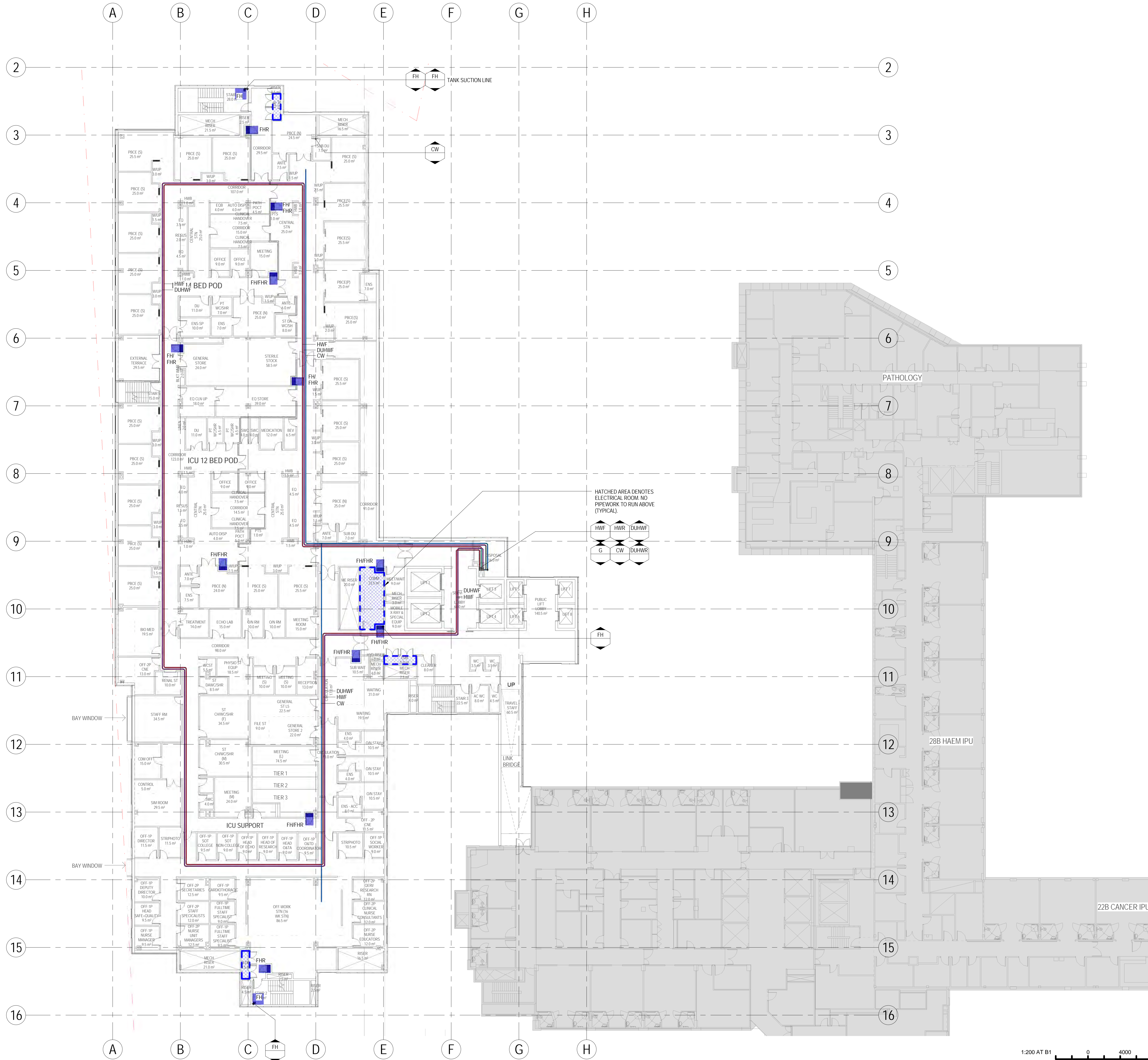
DRAWING STATUS
SCHEMATIC DESIGN

DRAWN MP	DRAWING CHECK RE
DESIGNED RE	DESIGN REVIEW RE
REVIEWED RE	DATE 29/01/15
APPROVED	DATE

SCALE 1:200	REV 3
DRAWING NO. SY140217-NEWB-HY-DG-0204	

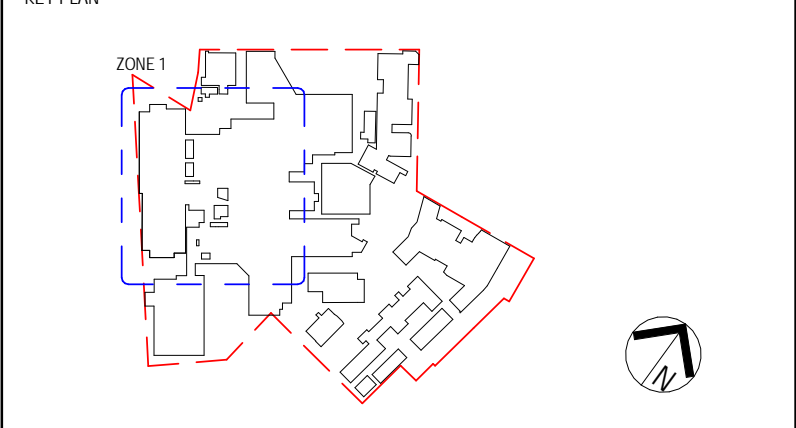


E:\Documents\Revit\2014\SY140217_STG_RVT_HY_CENTRAL_impresion.rvt
29/01/2015 1:22:34 PM



NOTES:
1. FHR/FH CUPBOARD LOCATIONS TO SUIT FIRE COMPARTMENTS.

3	29/01/15	MP	RE	100% SCHEMATIC DESIGN
2	07/01/15	MP	RE	100% SCHEMATIC DESIGN
1	12/01/14	MP		80% SCHEMATIC DESIGN

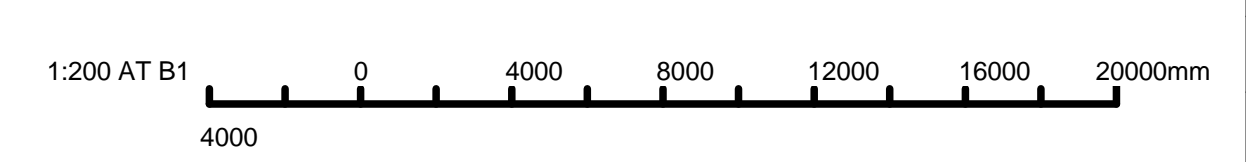


ACOR CONSULTANTS
ACOR Consultants Pty Ltd
Level 1, 24 Falcon Street
Crow's Nest NSW 2065
T +61 2 9438 5098

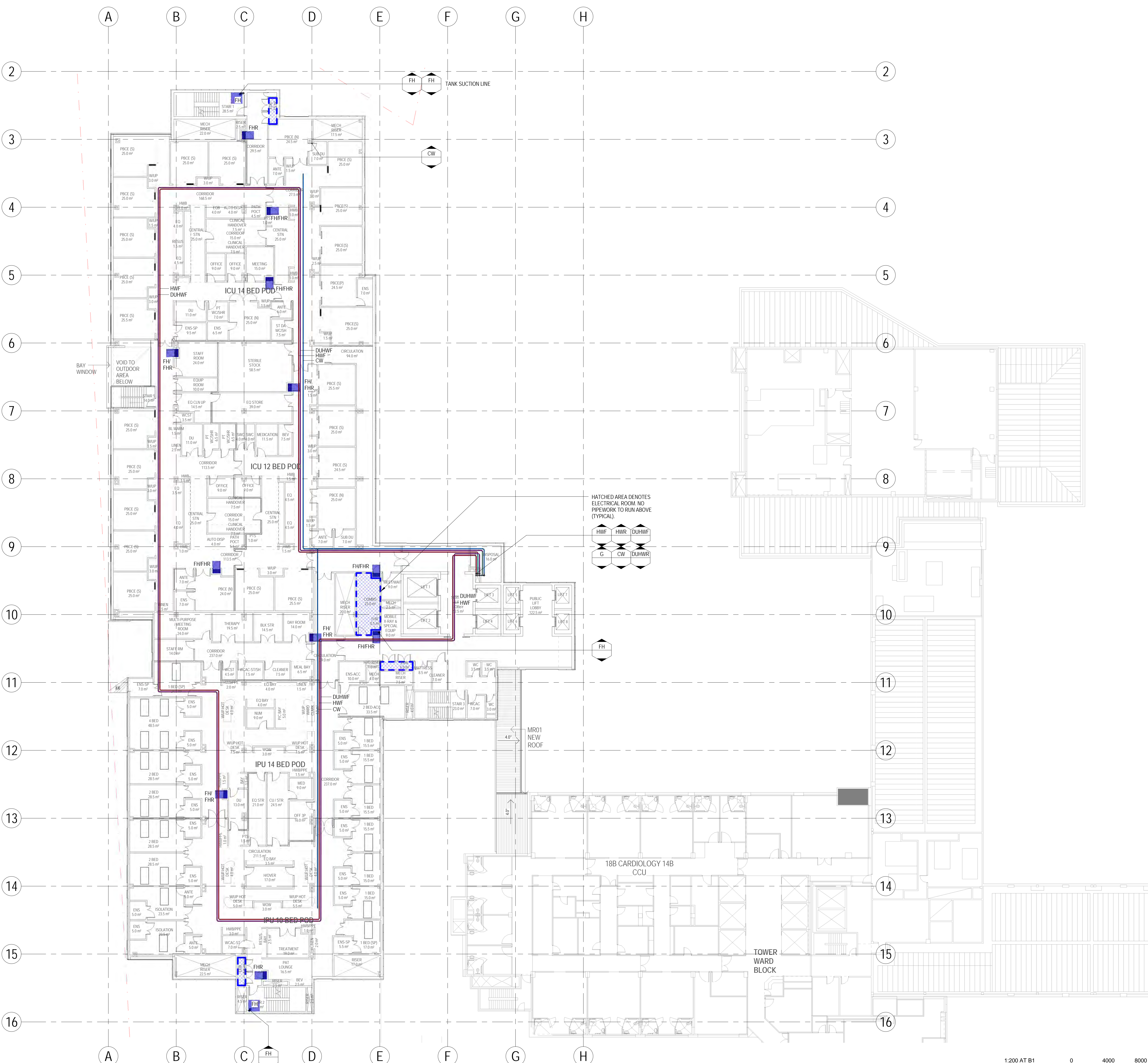
PROJECT
ST GEORGE HOSPITAL ACUTE SERVICES BUILDING REDEVELOPMENT
GRAY ST KOGARAH NSW 2217

TITLE
HYDRAULICS LEVEL 4 WATER & GAS

DRAWING STATUS	
SCHEMATIC DESIGN	
DRAWN MP	DRAWING CHECK RE
DESIGNED RE	DESIGN REVIEW RE
REVIEWED RE	DATE 29/01/15
APPROVED	DATE



SCALE 1:200	REV
DRAWING NO. SY140217-NEWB-HY-DG-0205	3

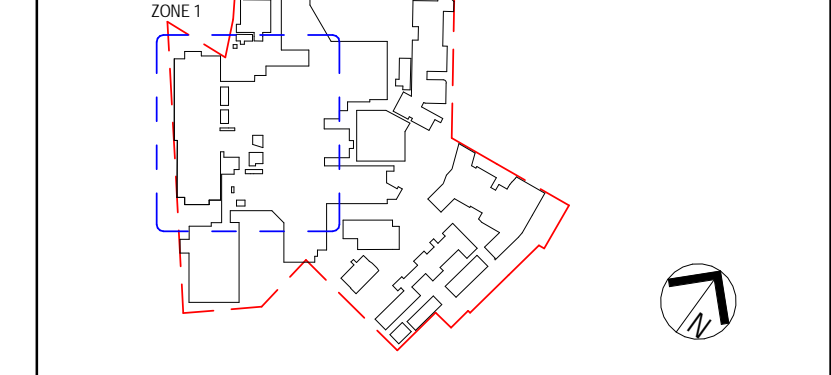


NOTES:

1. FHR/FH CUPBOARD LOCATIONS TO SUIT FIRE COMPARTMENTS.

REV	DATE	BY	CHKD	APPD	DESCRIPTION
3	29/01/15	MP	RE		100% SCHEMATIC DESIGN
2	07/01/15	MP	RE		100% SCHEMATIC DESIGN
1	17/01/14	MP			80% SCHEMATIC DESIGN ISSUE

KEY PLAN



PROJECT MANAGER



CLIENT



ACOR CONSULTANTS
ACOR Consultants Pty Ltd
 Level 1, 24 Falcon Street
 Crows Nest NSW 2065
 T +61 2 9438 5098

PROJECT

ST GEORGE HOSPITAL ACUTE SERVICES BUILDING REDEVELOPMENT
 GRAY ST KOGARAH NSW 2217

TITLE

HYDRAULICS LEVEL 5 WATER & GAS

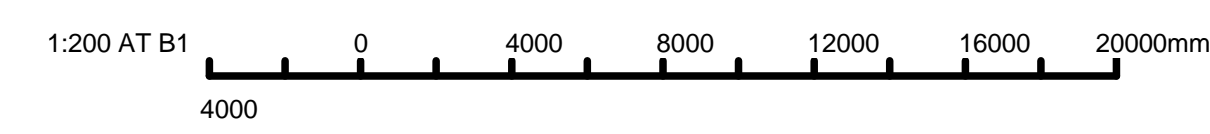
DRAWING STATUS

SCHEMATIC DESIGN

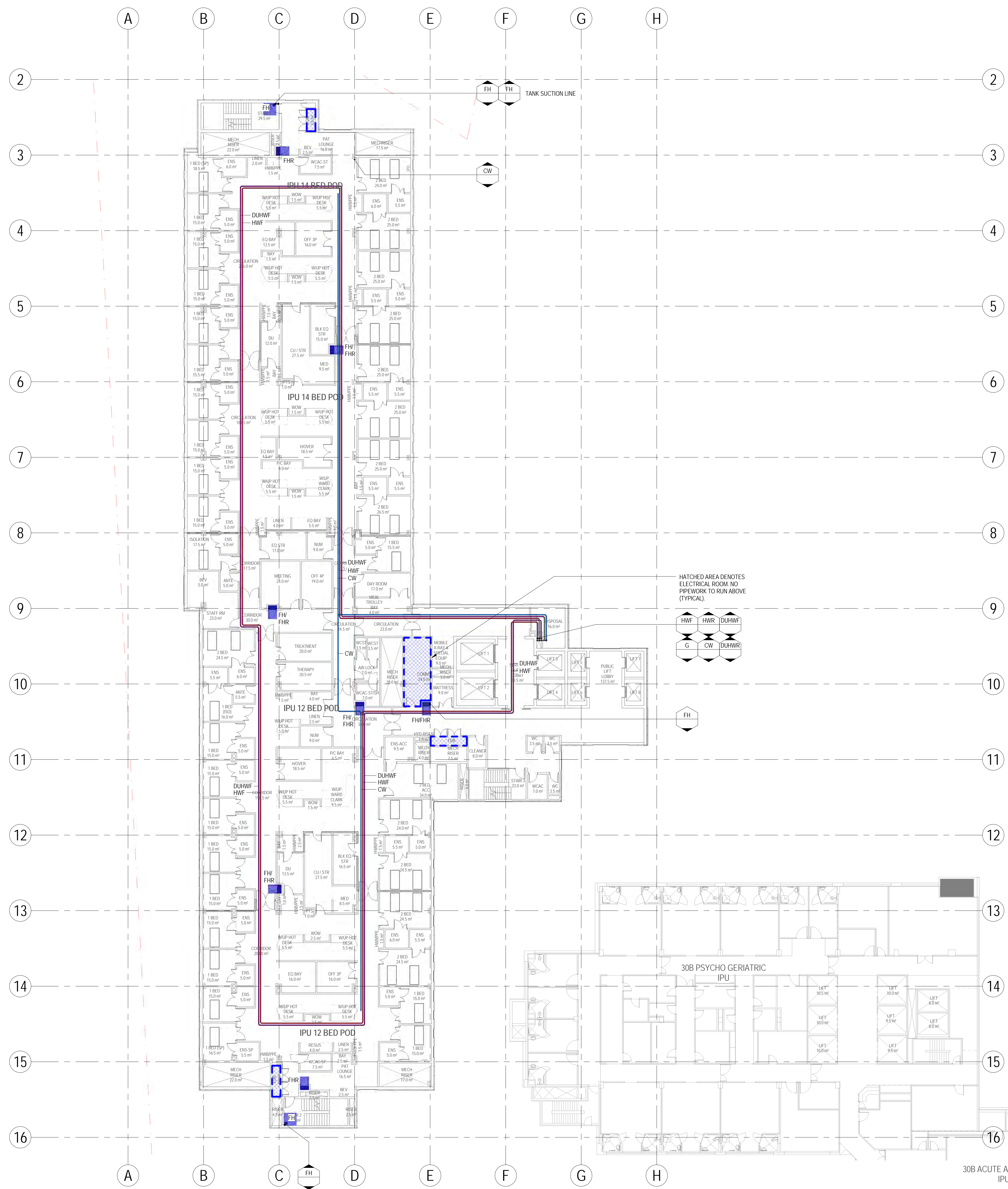
DESIGNED	DESIGNED BY	DESIGNED DATE	DESIGNED BY
MP	RE		
DESIGNED	DESIGNED BY	DESIGNED DATE	DESIGNED BY
RE			
REVIEWED	REVIEWED BY	REVIEWED DATE	REVIEWED BY
RE		29/01/15	
APPROVED	APPROVED BY	APPROVED DATE	APPROVED BY

SCALE: 1:200

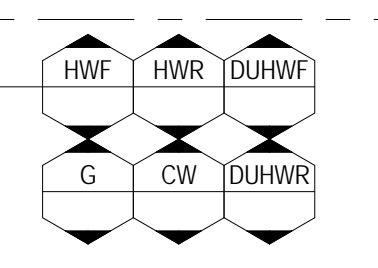
DRAWING NO: SY140217-NEWB-HY-DG-0206



E:\Documents\Revit\2014\SY140217_STG_RVT_HY_CENTRAL_impresion.rvt
29/01/2015 1:23:54 PM

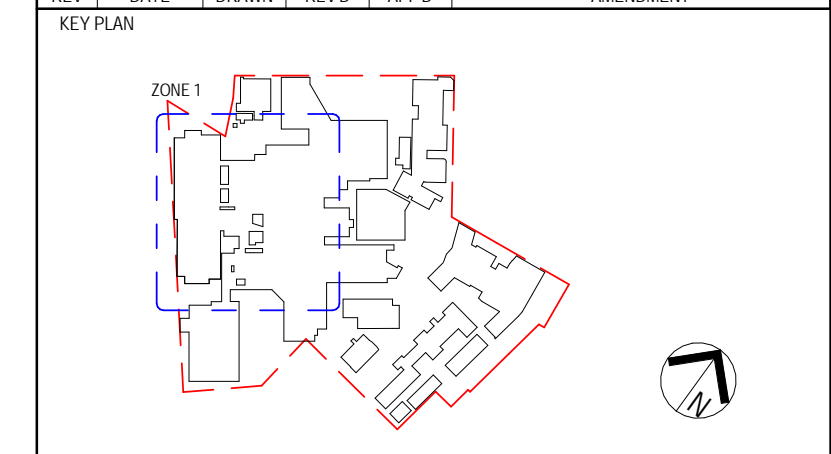


HATCHED AREA DENOTES ELECTRICAL ROOM. NO PIPEWORK TO RUN ABOVE (TYPICAL).



NOTES:

- FHR/FH CUPBOARD LOCATIONS TO SUIT FIRE COMPARTMENTS.
- | REV | DATE | BY | CHKD | APPD | DESCRIPTION |
|-----|----------|----|------|------|----------------------------|
| 3 | 29/01/15 | MP | RE | | 100% SCHEMATIC DESIGN |
| 2 | 07/01/15 | MP | RE | | 100% SCHEMATIC DESIGN |
| 1 | 17/01/14 | MP | | | 80% SCHEMATIC DESIGN ISSUE |



ACOR CONSULTANTS ACOR Consultants Pty Ltd
Level 1, 24 Falcon Street
Crows Nest NSW 2065
T +61 2 9438 5098

PROJECT
ST GEORGE HOSPITAL ACUTE SERVICES BUILDING REDEVELOPMENT
GRAY ST KOGARAH NSW 2217

TITLE
HYDRAULICS LEVEL 7 WATER & GAS

DRAWING STATUS	
SCHEMATIC DESIGN	
DRAWN MP	DRAWING CHECK RE
DESIGNED RE	DESIGN REVIEW RE
REVIEWED RE	DATE 29/01/15
APPROVED	DATE

