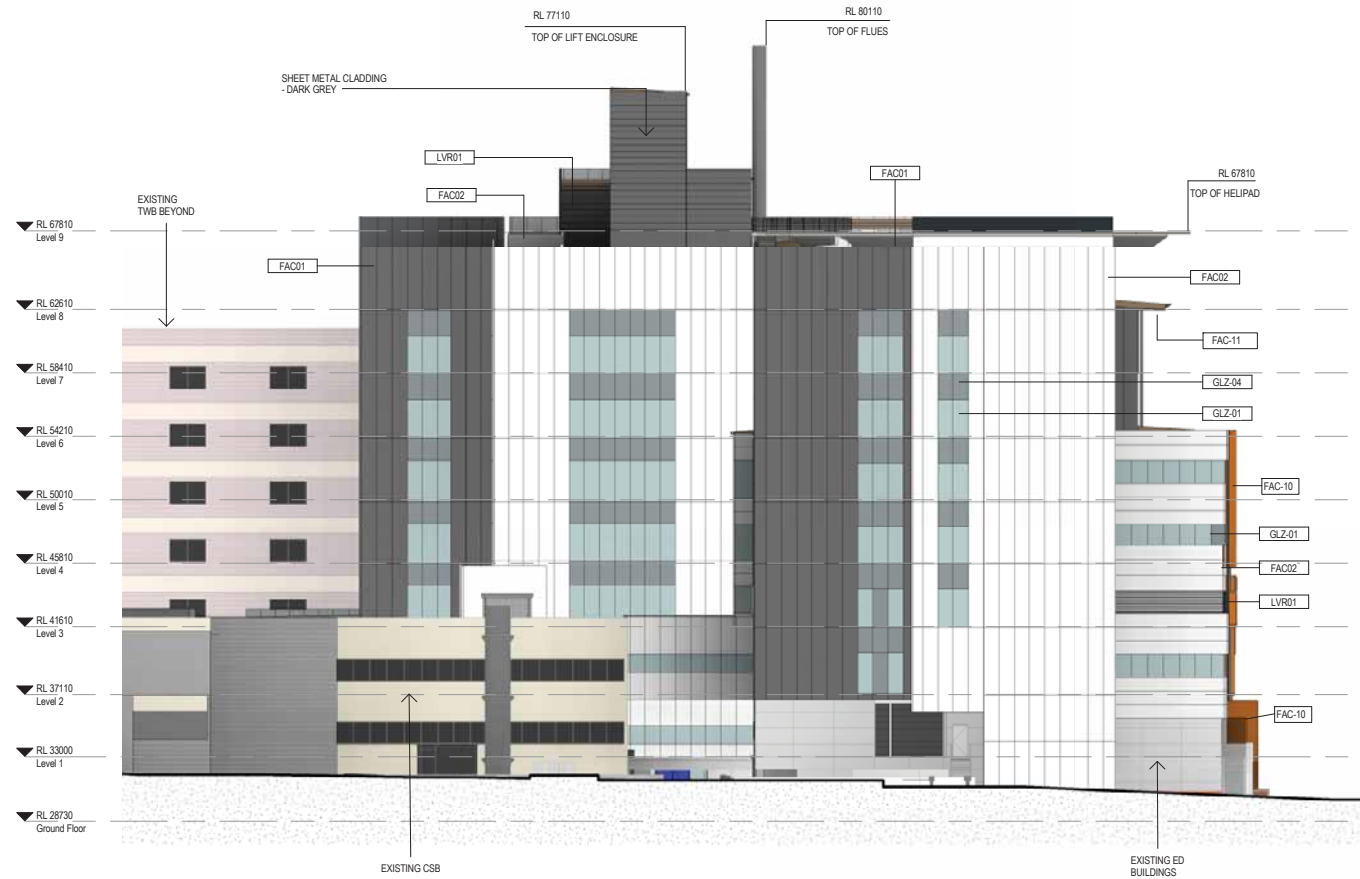




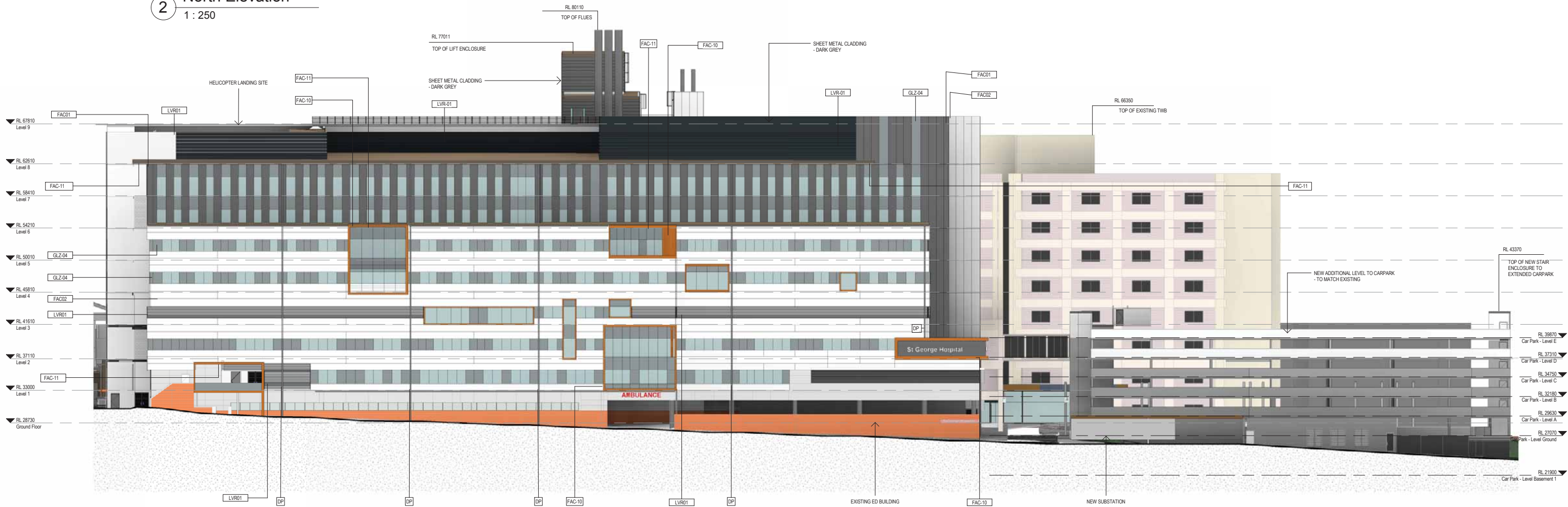
1 West Elevation Existing
1 : 250

19/06/2015 11:43:26 AM

CODE	DESCRIPTION
FAC-01	COMPOSITE PREFINISHED METAL CLADDING - DARK GREY
FAC-02	COMPOSITE PREFINISHED METAL CLADDING - OFF WHITE
FAC-10	COMPOSITE PREFINISHED METAL CLADDING - COPPER COLOURED
FAC-11	COMPOSITE WOOD LAMINATE SOFFIT CLADDING
LVR-01	HORIZONTAL METAL LOUVRES, DARK GREY
GLZ-01	TRANSPARENT GLASS WITH GREY TINT
GLZ-02	COLORBACKED GLASS - DARK GREY
DP	DOWNPIPES - COLOUR TO MATCH CLADDING



2 North Elevation
1 : 250



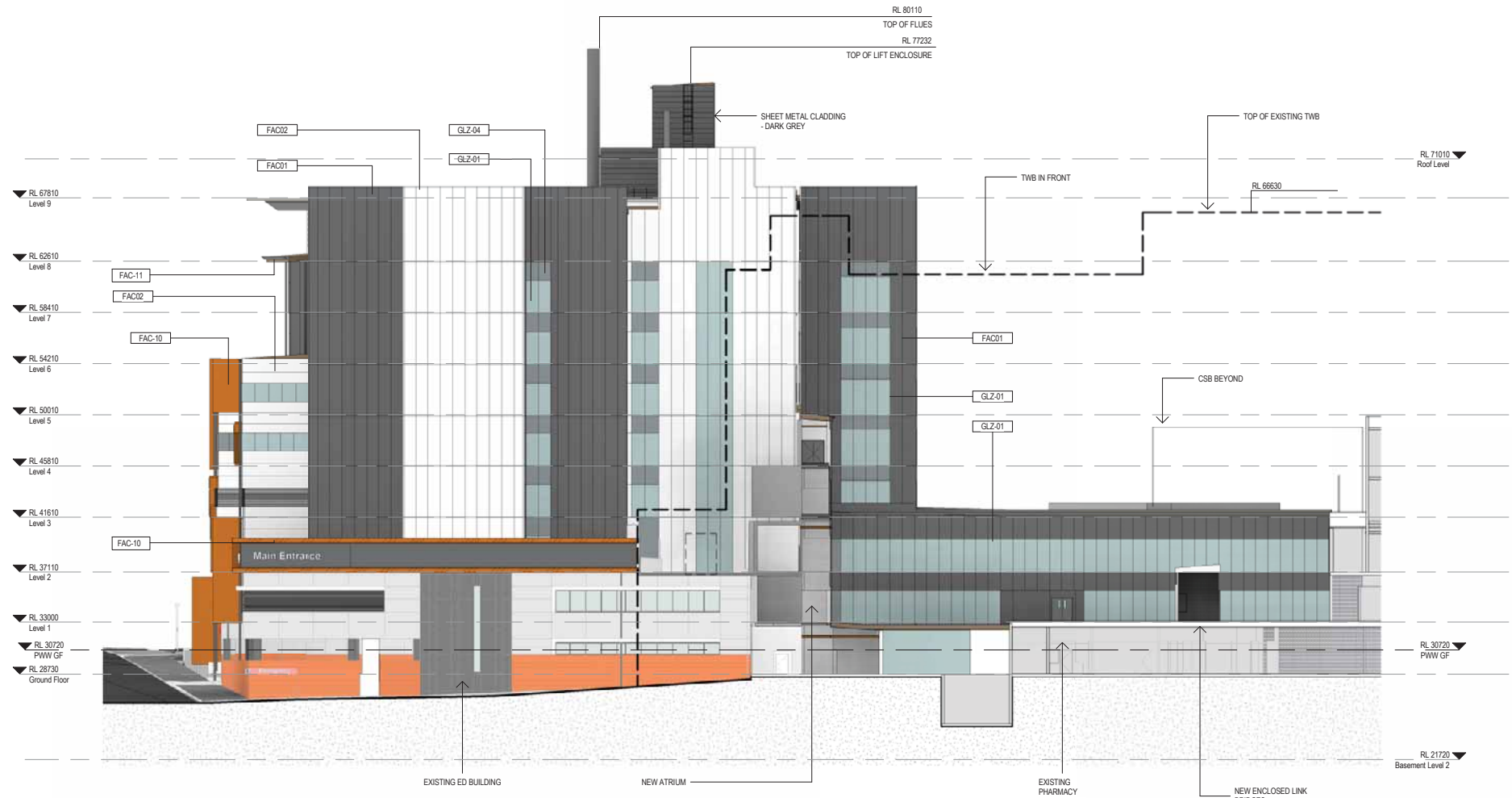
1 West Elevation
1 : 250

NOTE: LOCATION OF FLUES INDICATIVE ONLY
EXTERNAL DOWNPIPES INDICATIVE ONLY
SIGNAGE WORDING INDICATIVE ONLY

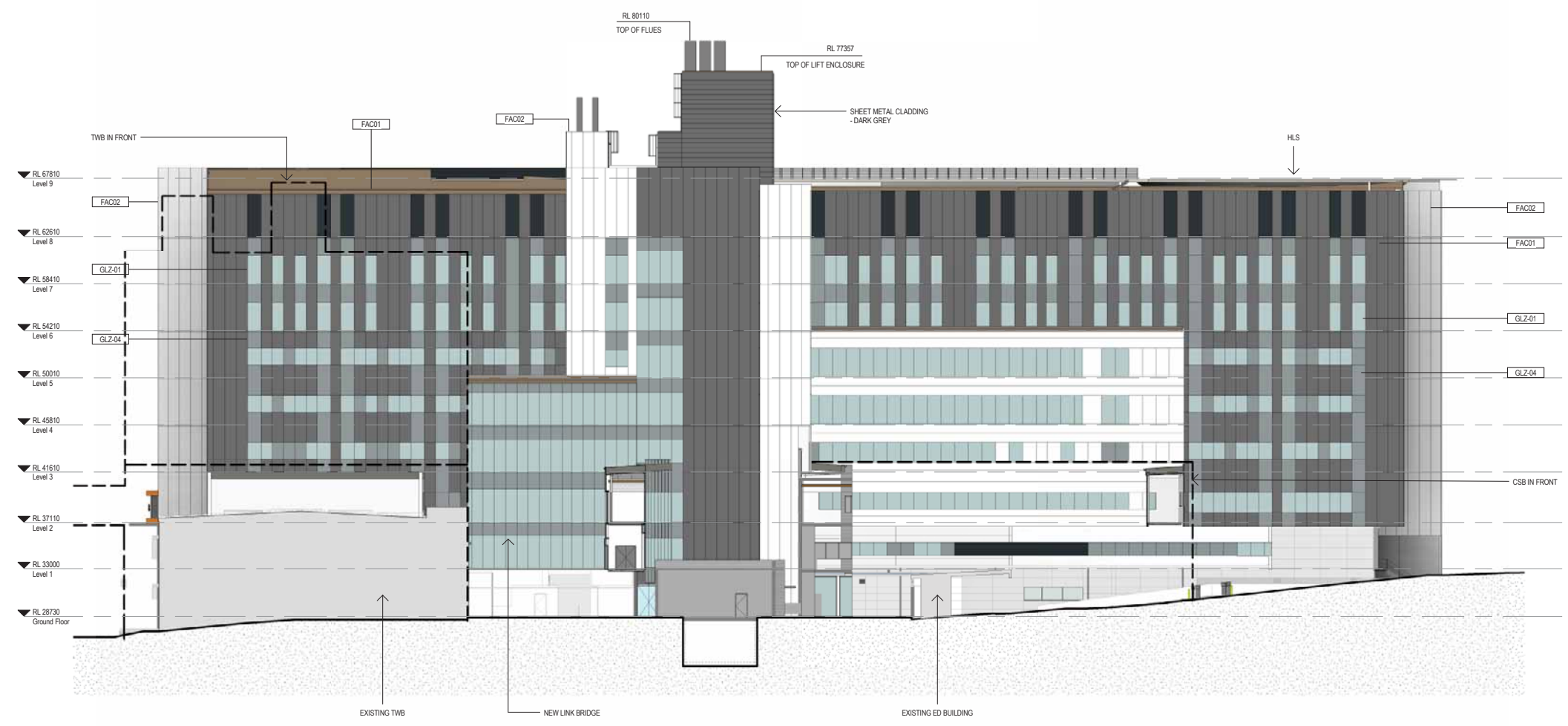
19/06/2015 10:17:58 AM



FINISHES LEGEND	
CODE	DESCRIPTION
FAC-01	COMPOSITE PREFINISHED METAL CLADDING - DARK GREY
FAC-02	COMPOSITE PREFINISHED METAL CLADDING - OFF WHITE
FAC-10	COMPOSITE PREFINISHED METAL CLADDING - COPPER COLOURED
FAC-11	COMPOSITE WOOD LAMINATE SOFFIT CLADDING
LVR-01	HORIZONTAL METAL LOUVRES, DARK GREY
GLZ-01	TRANSPARENT GLASS WITH GREY TINT
GLZ-02	COLOURBACKED GLASS - DARK GREY
DP	DOWNPIPES - COLOUR TO MATCH CLADDING



2 South Elevation
1 : 250



1 East Elevation
1 : 250

NOTE: LOCATION OF FLUES INDICATIVE ONLY
EXTERNAL DOWNPIPES INDICATIVE ONLY
SIGNAGE WORDING INDICATIVE ONLY

19/06/2015 10:34:43 AM

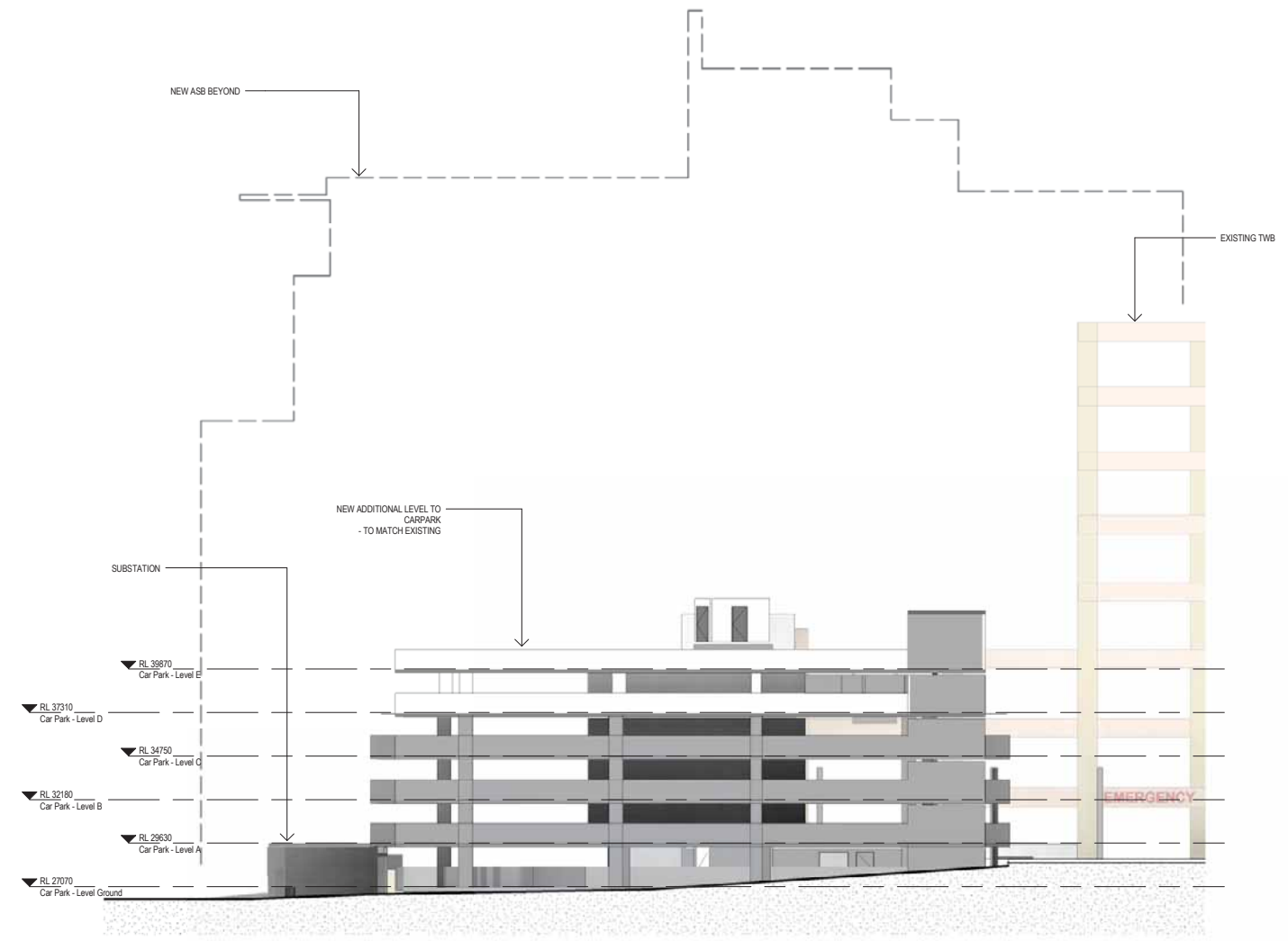
FINISHES LEGEND	
CODE	DESCRIPTION
FAC-01	COMPOSITE PREFINISHED METAL CLADDING - DARK GREY
FAC-02	COMPOSITE PREFINISHED METAL CLADDING - OFF WHITE
FAC-10	COMPOSITE PREFINISHED METAL CLADDING - COPPER COLOURED
FAC-11	COMPOSITE WOOD LAMINATE SOFFIT CLADDING
LVR-01	HORIZONTAL METAL LOUVRES, DARK GREY
GLZ-01	TRANSPARENT GLASS WITH GREY TINT
GLZ-02	COLOURBACKED GLASS - DARK GREY
DP	DOWNPIPES - COLOUR TO MATCH CLADDING



2 Gray St Car Park - North Elevation
1 : 250



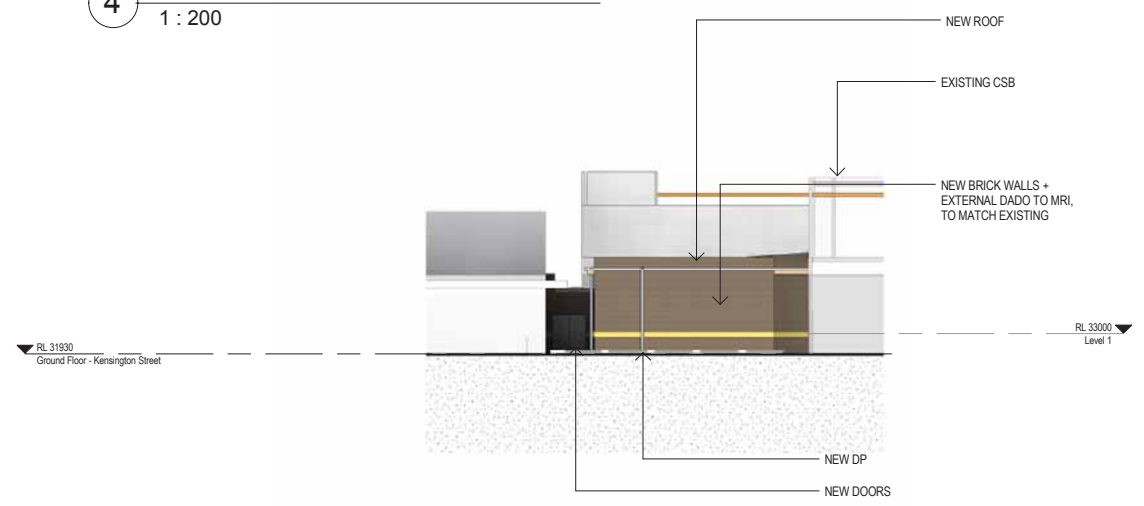
3 Proposed Elevation - Main Entry
1 : 200



1 Gray St Car Park - South Elevation
1 : 200



4 Service Centre - East Elevation
1 : 200



5 MRI - West Elevation
1 : 200

19/06/2015 11:47:23 AM



VIEW FROM GRAY STREET ROUNDABOUT



VIEW FROM GRAY STREET



VIEW FROM KENSINGTON STREET



VIEW FROM GRAY STREET ENTRY



View to Main Entry

NOTE: EXTERNAL DOWNPIPES INDICATIVE
SIGNAGE WORDING INDICATIVE

ASB DA 0204
3D VIEWS
Scale: 10.12.14 Rev:4



- FAC-01: Vertical coated steel cladding panels – dark grey
- FAC-02: Vertical coated steel cladding panels – off white
- FAC-03: Horizontal coated steel cladding panels – off white
- WF-01: Powdercoated extruded aluminium window frames – dark grey
- FAC-10: Aluminium composite cladding panels with integral parapets – copper coloured
- FAC-11: Composite wood laminate cladding panels
- GLZ-01: Clear double-glazed IGUs in (WF-01) Powdercoated extruded aluminium window frames – dark grey
- GLZ-02: Opaque 'colourback' single glazing backed - dark grey in (WF-01) Powdercoated extruded aluminium window frames – dark grey
- LVR-01: Powdercoated extruded aluminium louvres, horizontal - dark grey
- MR-01: Colorbond Sheet metal roofing – off white