



BR2LDU1L0200	G	Cover Page	19/06/2019
BR2LDU1L0201	G	Concept Plan	19/06/2019
BR2LDU1L0202	H	Landscape Sections	19/06/2019
BR2LDS1L0201	A	Modifications summary	19/06/2019

These drawings superseded the follow drawings list:

RPB430-GE-R4B001-GA	U	General Arrangement	03/07/2019
RPB430-GE-R4B002-GRND	Q	Ground Floor	03/07/2019
RPB430-GE-R4B003-PO2	R	Podium Level	03/07/2019
RPB430-SE-R4B004	H	R4B Typical Podium Section 1	August 2016
RPB430-SE-R4B005	H	R4B Typical Podium Section 2	August 2016



LANDSCAPE ARCHITECTURE
URBANISM
ENVIRONMENT
BIOCITY RESEARCH

SYDNEY
MELBOURNE
SHENZHEN
BRISTOL

© Copyright McGregor Coxall
AUS ACN 082 334 290
UK 10199853
PRC ID NO. 06000002201607080008
Sydney Melbourne Shenzhen Bristol
www.mcgregorcoxall.com

Reproduction of the whole or part of this document constitutes an infringement of copyright. The information, ideas and concepts contained in this document are confidential. The recipient(s) of this document is/are prohibited from disclosing such information, ideas and concepts without the written consent of McGregor Coxall.

Client
Lendlease

Project Name
One Sydney Harbour R4B

Project No.
0773

Address
Barangaroo

Phase
SECTION 4.55

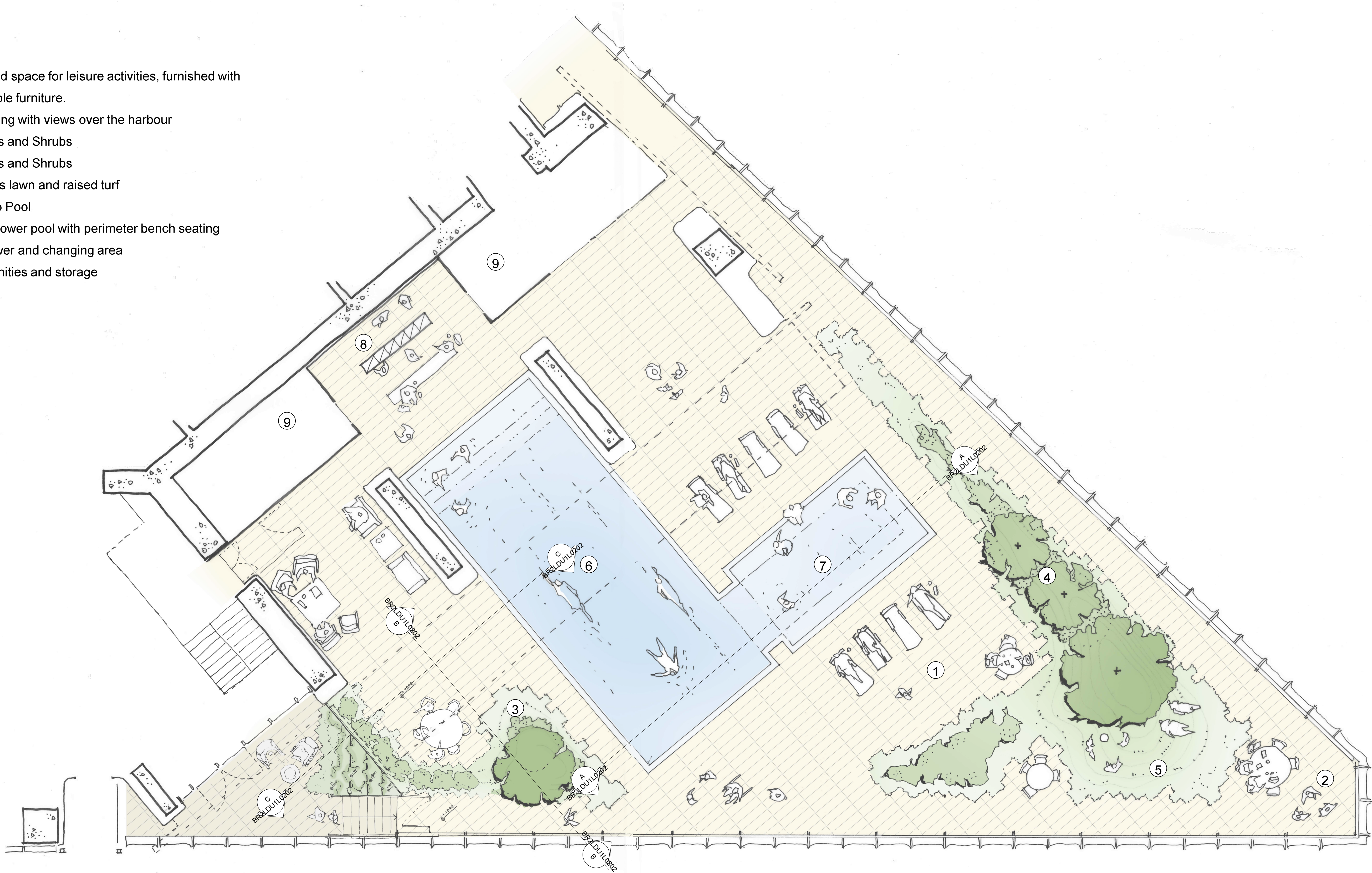
Sheet Title
Cover Page

Sheet No.
BR2LDU1L0200

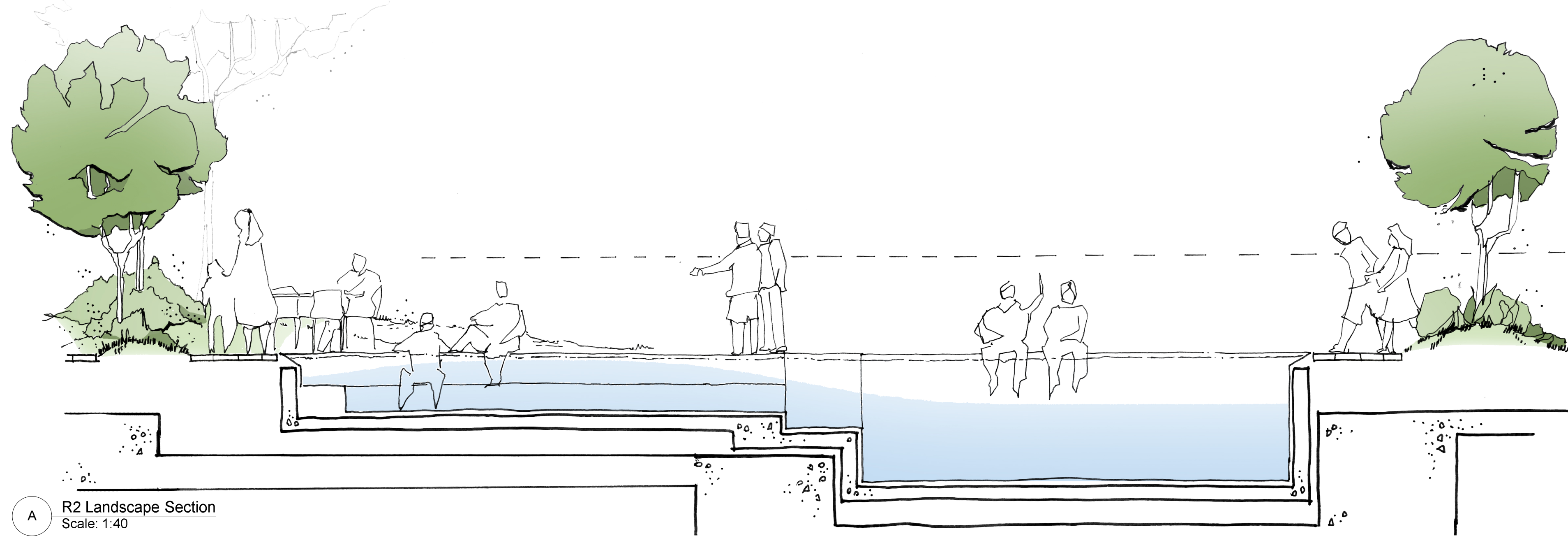
Rev
G

Legend

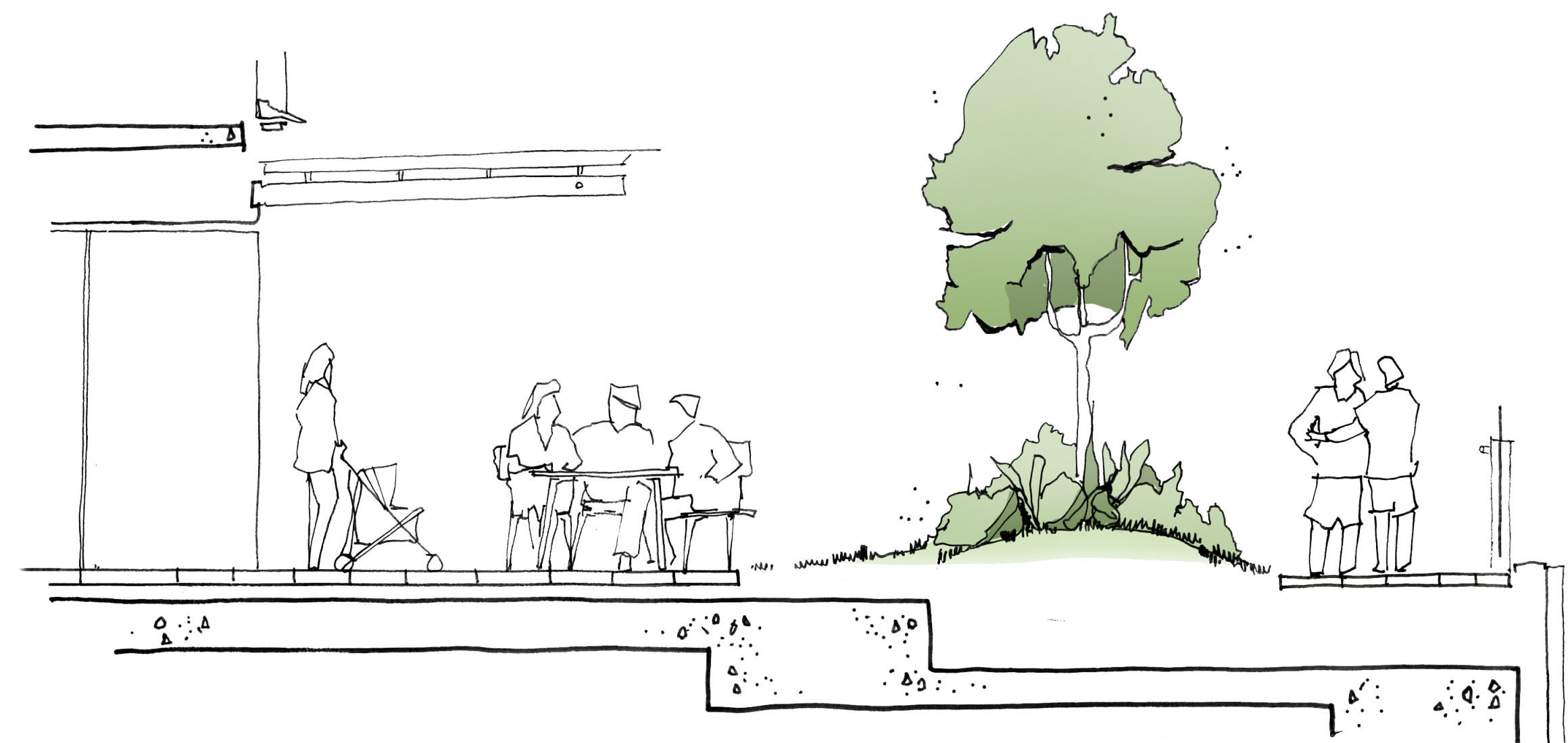
- 1. Paved space for leisure activities, furnished with moveable furniture.
- 2. Seating with views over the harbour
- 3. Trees and Shrubs
- 4. Trees and Shrubs
- 5. Grass lawn and raised turf
- 6. Deep Pool
- 7. Shallower pool with perimeter bench seating
- 8. Shower and changing area
- 9. Amenities and storage



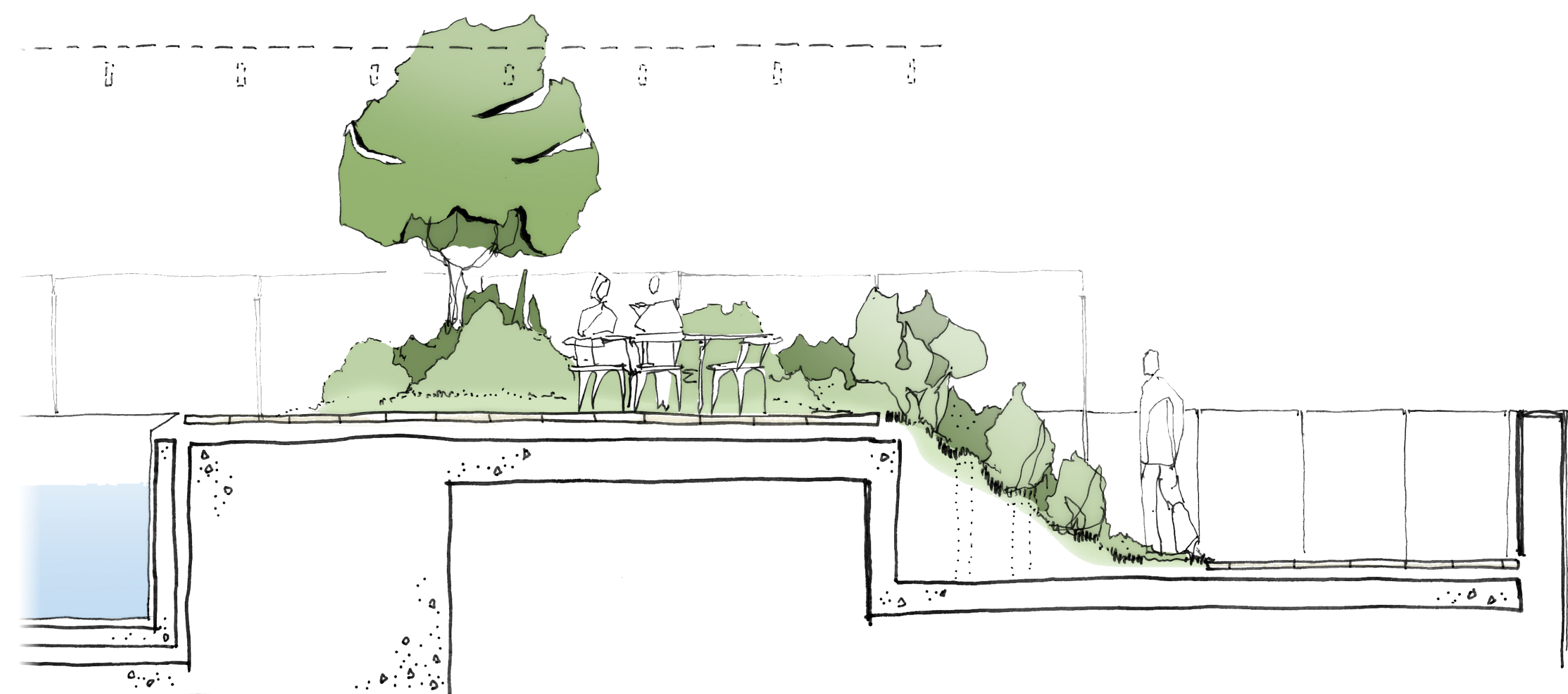
Issue Log			
E	For information	YH/JM	16/4/20
F	Concept Design	JV/JM	14/5/20
G	For s 4.55 application	JM	19/06/2020
Rev	Revision Description	By / Checked	Date



A R2 Landscape Section
Scale: 1:40



B R2 Landscape Section
Scale: 1:40



C R2 Landscape Section
Scale: 1:40

Reconfiguration of amenity spaces providing restrooms, showers, change rooms and pool side storage.

Addition of a shallow pool to cater other water uses for both children and adults.

Increase in the usable space at the front of the pool for various activities such as yoga or sunbathing. Moveable furniture to provide flexibility to the use of the space. This also compensates the usable space taken by the shallow pool.

Reconfiguration of the planting area to improve the view lines towards the harbour from the pool and provide clear and hard paving maintenance access around the facade.

Changes to the entry level with the arrival to the pool area from the corridor of the internal common amenities.

