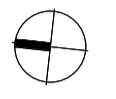
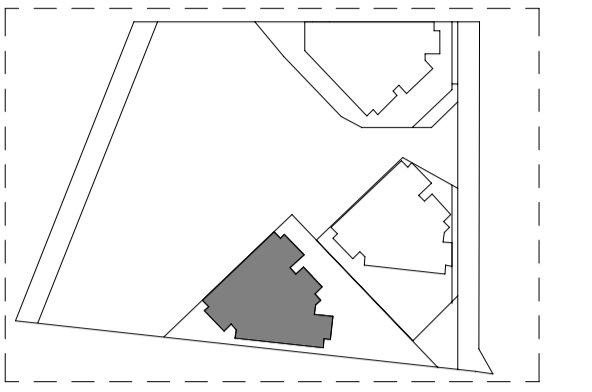


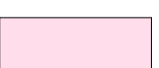


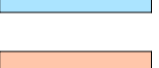
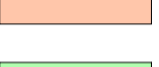
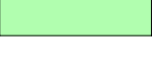



KEY PLAN




LEGEND

-  VOID
-  CONCRETE IN-SITU STRUCTURAL WALL
-  CARS
-  KWH BICYCLE STORE
-  RESIDENTIAL STORAGE (FITOUT AND USE)
-  RETAIL STORAGE (FITOUT AND USE)
-  EXTENT OF SHARED BASEMENT FACILITIES
-  EXTENT OF RESIDENTIAL TOWER FACILITIES (FITOUT AND USE)
-  PERIMETER RETAINING WALL COVERED UNDER SSD5897

NOTES  
BASEMENT CONSTRUCTION UNDER SEPARATE DEVELOPMENT APPLICATION SSD 6960

AMENDMENTS ON THIS DRAWING RELATE TO THE KEY AND COLOURING.





**Department of Planning and Environment**

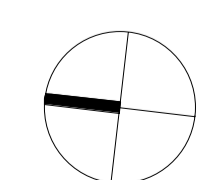
*Issued under the Environmental Planning and Assessment Act 1979*  
**Approved Section 4.55 (1A) Modification Application**

**No: SSD 6964 MOD 5    Granted on 14 February 2022**

**Signed: AW      Sheet No: 1 of 5**

**R4A  
SETOUT PLAN BASEMENT LEVEL B4**

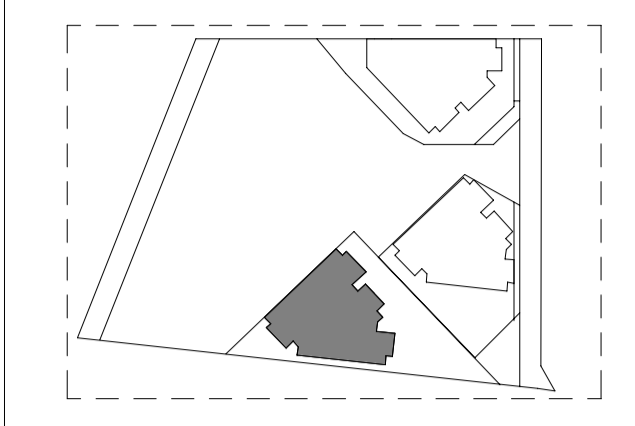
Scale 1 : 250 @ A1    Scale 1:250 @ A3










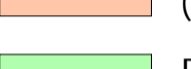
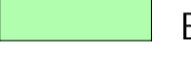
Drawing: BR4A\_ASD\_PA1\_1001  
Date: 21.10.21    Revision: 21  
\$4.55



KEY PLAN



LEGEND


-  VOID
-  CONCRETE IN-SITU STRUCTURAL WALL
-  CARS
-  KWH BICYCLE STORE
-  RESIDENTIAL STORAGE (FITOUT AND USE)
-  RETAIL STORAGE (FITOUT AND USE)
-  EXTENT OF SHARED BASEMENT FACILITIES
-  EXTENT OF RESIDENTIAL TOWER FACILITIES (FITOUT AND USE)
-  PERIMETER RETAINING WALL COVERED UNDER SSD5897

NOTES  
 BASEMENT CONSTRUCTION UNDER SEPARATE DEVELOPMENT APPLICATION SSD 6960

AMENDMENTS ON THIS DRAWING RELATE TO THE KEY AND COLOURING.

CLOUDING REFLECTS CHANGES WHICH IMPACTS R4A

1. CAR SPACE ALLOCATED TO R4A
2. CAR SPACE UNALLOCATED FROM R4A

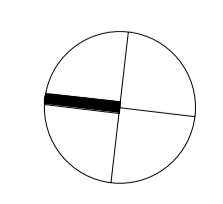


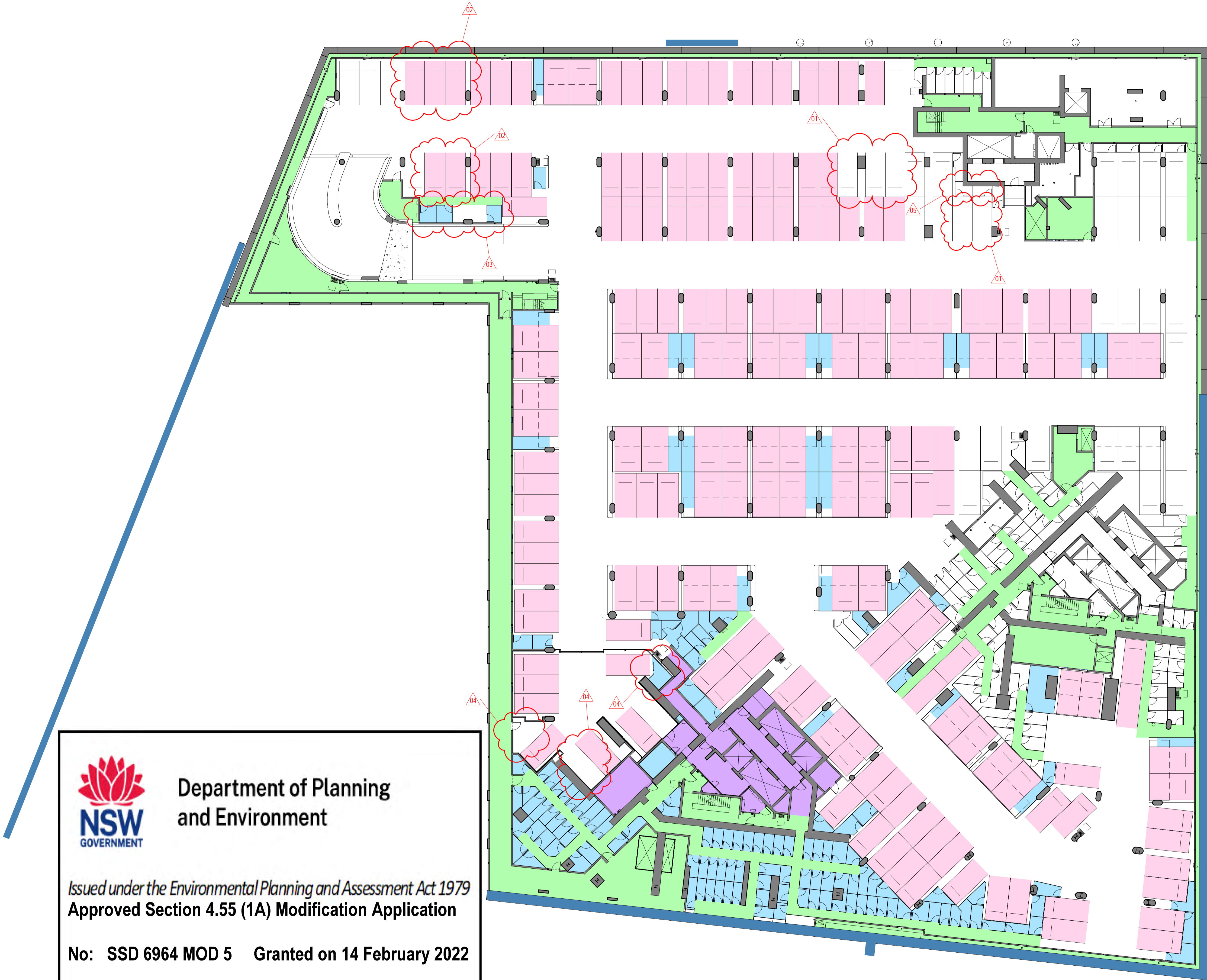
**Department of Planning and Environment**

*Issued under the Environmental Planning and Assessment Act 1979*  
**Approved Section 4.55 (1A) Modification Application**

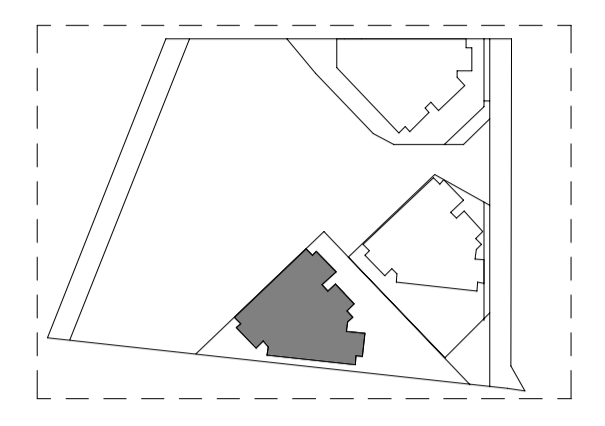
**No: SSD 6964 MOD 5    Granted on 14 February 2022**

**Signed: AW    Sheet No: 2 of 5**





KEY PLAN



LEGEND

- VOID
- CONCRETE IN-SITU STRUCTURAL WALL
- CARS
- KWH BICYCLE STORE
- RESIDENTIAL STORAGE (FITOUT AND USE)
- RETAIL STORAGE (FITOUT AND USE)
- EXTENT OF SHARED BASEMENT FACILITIES
- EXTENT OF RESIDENTIAL TOWER FACILITIES (FITOUT AND USE)
- PERIMETER RETAINING WALL COVERED UNDER SSD5897

NOTES  
BASEMENT CONSTRUCTION UNDER SEPARATE DEVELOPMENT APPLICATION SSD 6960

AMENDMENTS ON THIS DRAWING RELATE TO THE KEY AND COLOURING.

CLOUDING REFLECTS CHANGES WHICH IMPACTS R4A

1. CAR SPACE UNALLOCATED FROM R4A
2. CAR SPACE ALLOCATED TO R4A
3. STORAGE CAGE ALLOCATED TO R4A
4. STORAGE CAGE RELOCATION
5. STORAGE CAGE UNALLOCATED FROM R4A



Department of Planning and Environment

Issued under the Environmental Planning and Assessment Act 1979  
Approved Section 4.55 (1A) Modification Application

No: SSD 6964 MOD 5 Granted on 14 February 2022

Signed: AW Sheet No: 3 of 5

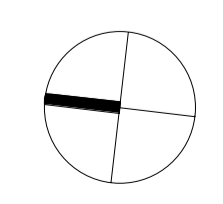


PRINCIPAL ARCHITECT:  
**RPBW**  
RENZO PIANO BUILDING WORKSHOP  
Via P.P. Rubens 29, 16158 Genova - Italy  
Emanuela Baglietto  
Nominated Architect | NSW ARB 9512

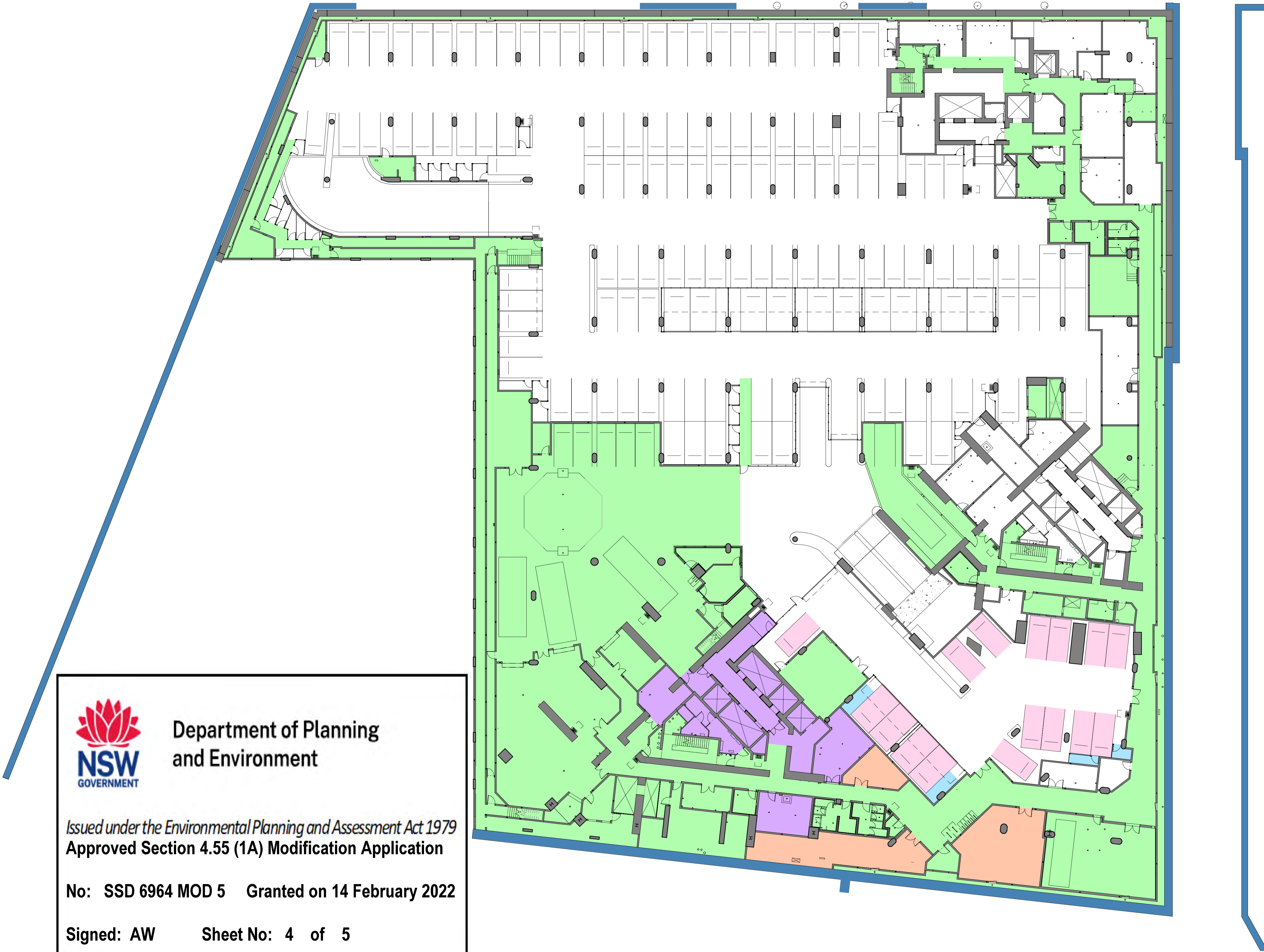
EXECUTIVE ARCHITECT:  
Lendlease Integrated Solutions  
ABN 51 632 932 391  
Level 14, Tower Three,  
International Towers Sydney  
Exchange Place, 300 Barangaroo Av,  
Barangaroo NSW 2000  
Natasha Galvez  
Nominated Architect | NSW ARB 9180

R4A  
SETOUT PLAN BASEMENT LEVEL B2

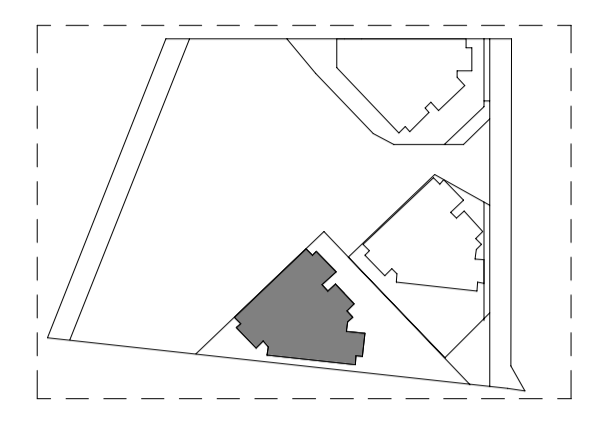
Scale 1 : 250 @ A1 Scale 1:250 @ A3










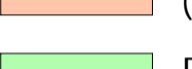
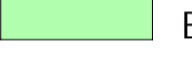
Drawing: BR4A\_ASD\_PA1\_1003  
Date: 21.10.21 Revision: 22  
\$4.55



KEY PLAN



LEGEND

-  VOID
-  CONCRETE IN-SITU STRUCTURAL WALL
-  CARS
-  KWH BICYCLE STORE
-  RESIDENTIAL STORAGE (FITOUT AND USE)
-  RETAIL STORAGE (FITOUT AND USE)
-  EXTENT OF SHARED BASEMENT FACILITIES
-  EXTENT OF RESIDENTIAL TOWER FACILITIES (FITOUT AND USE)
-  PERIMETER RETAINING WALL COVERED UNDER SSD5897

NOTES  
 BASEMENT CONSTRUCTION UNDER SEPARATE DEVELOPMENT APPLICATION SSD 6960

AMENDMENTS ON THIS DRAWING RELATE TO THE KEY AND COLOURING.



Department of Planning and Environment

Issued under the Environmental Planning and Assessment Act 1979  
 Approved Section 4.55 (1A) Modification Application

No: SSD 6964 MOD 5 Granted on 14 February 2022

Signed: AW Sheet No: 4 of 5

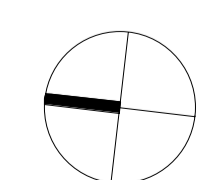


PRINCIPAL ARCHITECT:  
**RPBW**  
 RENZO PIANO BUILDING WORKSHOP  
 Via P.P. Rubens 29, 16158 Genova - Italy  
 Emanuela Baglietto  
 Nominated Architect | NSW ARB 9512

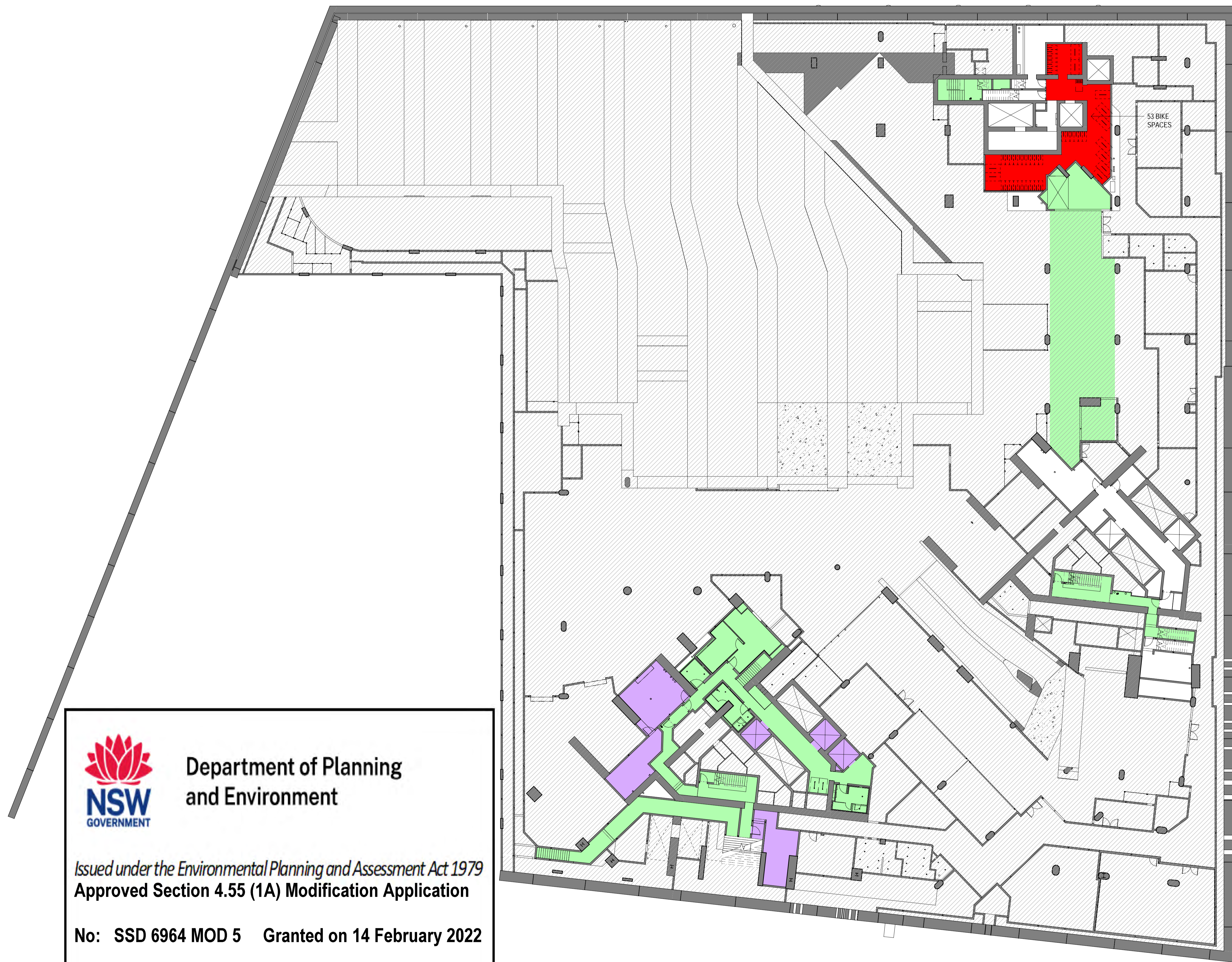
EXECUTIVE ARCHITECT:  
 Lendlease Integrated Solutions  
 ABN 51 632 932 391  
 Level 14, Tower Three,  
 International Towers Sydney  
 Exchange Place, 300 Barangaroo Av,  
 Barangaroo NSW 2000  
 Natasha Galvez  
 Nominated Architect | NSW ARB 9180

R4A  
 SETOUT PLAN BASEMENT LEVEL B1

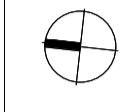
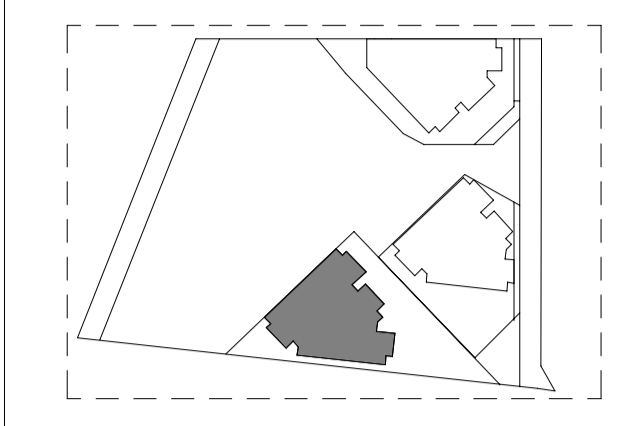
Scale 1 : 250 @ A1 Scale 1:250 @ A3





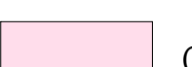



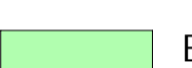


Drawing: BR4A\_ASD\_PA1\_1004  
 Date: 21.10.21 Revision: 21  
 \$4.55



KEY PLAN



LEGEND

-  VOID
-  CONCRETE IN-SITU STRUCTURAL WALL
-  CARS
-  KWH BICYCLE STORE
-  RESIDENTIAL STORAGE (FITOUT AND USE)
-  RETAIL STORAGE (FITOUT AND USE)
-  EXTENT OF SHARED BASEMENT FACILITIES
-  EXTENT OF RESIDENTIAL TOWER FACILITIES (FITOUT AND USE)
-  PERIMETER RETAINING WALL COVERED UNDER SSD5897

NOTES  
 BASEMENT CONSTRUCTION UNDER SEPARATE DEVELOPMENT APPLICATION SSD 6960

AMENDMENTS ON THIS DRAWING RELATE TO THE KEY AND COLOURING.



Department of Planning and Environment

Issued under the Environmental Planning and Assessment Act 1979  
 Approved Section 4.55 (1A) Modification Application

No: SSD 6964 MOD 5 Granted on 14 February 2022

Signed: AW Sheet No: 5 of 5

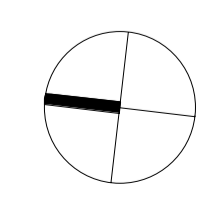
R4A  
 SETOUT PLAN BASEMENT LEVEL B0

PRINCIPAL ARCHITECT:  
**RPBW**  
 RENZO PIANO BUILDING WORKSHOP  
 Via P.P. Rubens 29, 16158 Genova - Italy  
 Emanuela Baglietto  
 Nominated Architect | NSW ARB 9512

EXECUTIVE ARCHITECT:  
 Lendlease Integrated Solutions  
 ABN 51 632 932 391  
 Level 14, Tower Three,  
 International Towers Sydney  
 Exchange Place, 300 Barangaroo Av,  
 Barangaroo NSW 2000  
 Natasha Galvez  
 Nominated Architect | NSW ARB 9180



Scale 1 : 250 @ A1 Scale 1:250 @ A3



Drawing: BR4A\_ASD\_PA1\_1005  
 Date: 21.10.21 Revision: 21  
 S4.55