


# ONE SYDNEY HARBOUR BARANGAROO SOUTH



Stage 1B Basement SSD6960  
S4.55 Modification

## ARCHITECTURAL DRAWINGS

BB2_PA2_A000	E	TITLE SHEET
BB2_PA2_A100	D	BASEMENT PLAN LEVEL B0
BB2_PA2_A101	E	BASEMENT PLAN LEVEL B1
BB2_PA2_A102	D	BASEMENT PLAN LEVEL B2
BB2_PA2_A103	D	BASEMENT PLAN LEVEL B3
BB2_PA2_A104	D	BASEMENT PLAN LEVEL B4

	<b>Planning, Industry &amp; Environment</b>
<i>Issued under the Environmental Planning and Assessment Act 1979</i>	
Approved Section 4.55 (..... <sup>1A</sup> .....) Modification Application	
No. .... <sup>3</sup> .....	Granted on ..... <sup>10/12/2019</sup> .....
In respect to <sup>SSD 6960</sup> .....	
Signed ..... <sup>JS</sup> .....	
Sheet No ..... <sup>1</sup> .....	of ..... <sup>6</sup> .....

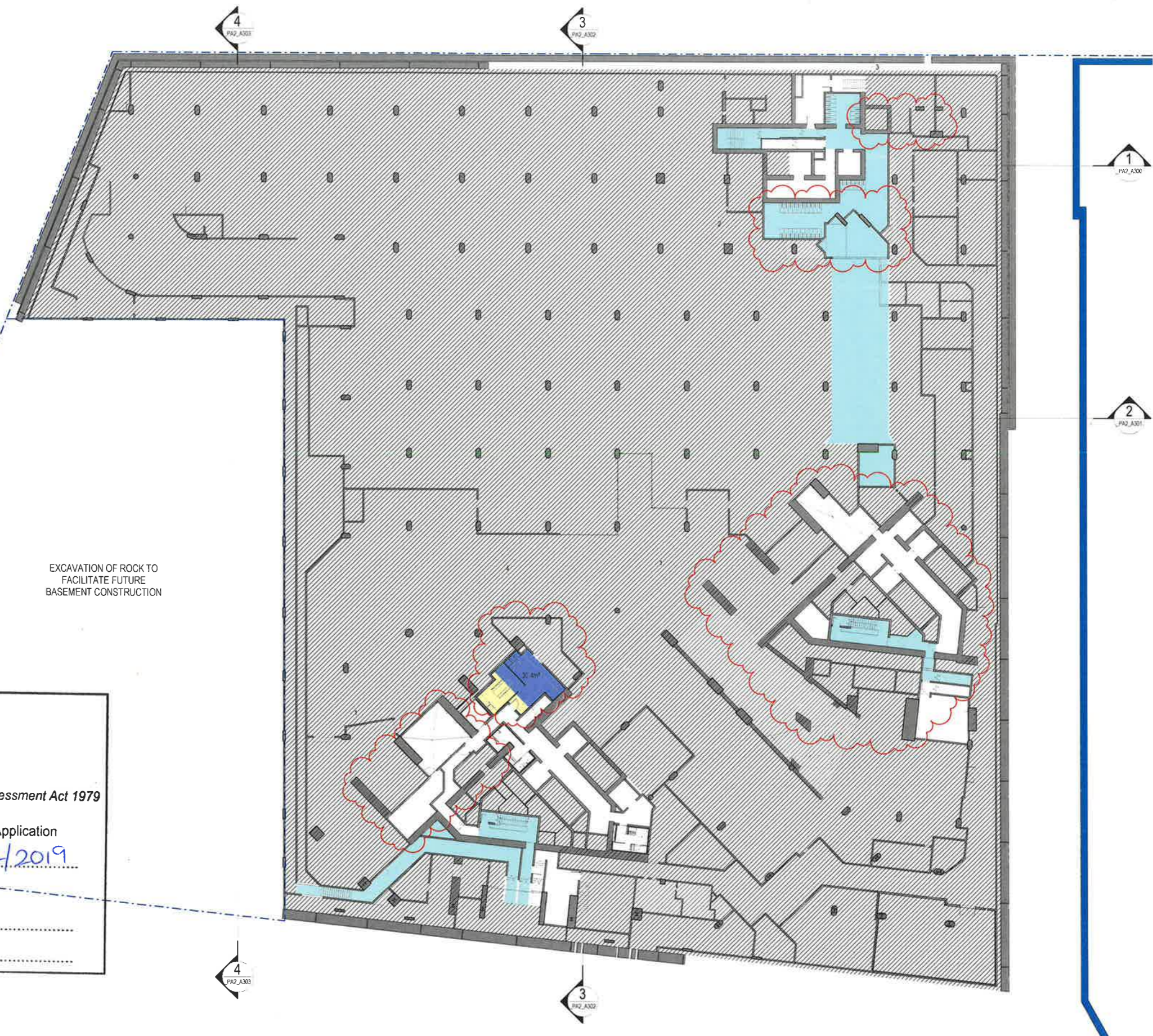
**NSW GOVERNMENT** | **Planning, Industry & Environment**

Issued under the Environmental Planning and Assessment Act 1979

Approved Section 4.55 (.....1A.....) Modification Application  
 No. 3 Granted on 10/12/2019  
 In respect to SSD 6960  
 Signed H  
 Sheet No 2 of 6

CENTRAL BARANGAROO

EXCAVATION OF ROCK TO FACILITATE FUTURE BASEMENT CONSTRUCTION



**LEGEND**

- BARANGAROO SOUTH SITE BOUNDARY
- CONCRETE IN-SITU RETAINING WALL
- PERIMETER RETAINING WALL DOCUMENTATION COVERED UNDER SEPARATE SUBMISSION NO. SSD5897
- SHARED INFRASTRUCTURE & FACILITIES
- VOID
- BASEMENT GFA
- SPATIAL PROVISION FOR FUEL CELLS/MICROTURBINES
- 27.9m² GFA COVERED UNDER SEPARATE DEVELOPMENT APPLICATION SSD 6966

FITOUT OF ROOMS SUBJECT TO DESIGN DEVELOPMENT PRIOR TO ISSUE CC.

PARKING IS INDICATIVE & SUBJECT TO FUTURE BUILDING APPROVALS.

ALL STRUCTURE IS FOR APPROVAL. LAYOUT IS INDICATIVE AND SUBJECT TO CHANGE.

	NON-RESIDENTIAL GFA (m²)
B0	30.4
B1	34.5
<b>TOTAL NON-RESIDENTIAL GFA (m²)</b>	<b>64.9</b>

**CURRENT REVISION COMMENTS**

Rev	CURRENT REVISION	Date
E	ISSUED FOR BASEMENT DA	29/08/19
1	STRUCTURE UPDATES FOR R4A AND R4B TOWERS	
2	BIKE STORAGE REARRANGED FOR MECHANICAL PLENUM REQUIREMENTS	
3	STRUCTURE UPDATED FOR ADDITIONAL PODIUM LIFTS	
4	MANAGEMENT ROOM LAYOUTS FOR DDA ACCESSIBILITY REQUIREMENTS	



1  
\_PA2\_A300

2  
\_PA2\_A301

4  
\_PA2\_A303

3  
\_PA2\_A302

1  
\_PA2\_A300

2  
\_PA2\_A301

4  
\_PA2\_A303

3  
\_PA2\_A302

CENTRAL BARANGAROO

EXCAVATION OF ROCK TO FACILITATE FUTURE BASEMENT CONSTRUCTION

**NSW GOVERNMENT** | **Planning, Industry & Environment**

Issued under the Environmental Planning and Assessment Act 1979

Approved Section 4.55 (.....**1A**.....) Modification Application  
 No. **3** Granted on **10/12/2019**

In respect to **SSD 6960**

Signed **H**

Sheet No **3** of **6**



**LEGEND**

- BARANGAROO SOUTH SITE BOUNDARY
- CONCRETE IN-SITU RETAINING WALL
- PERIMETER RETAINING WALL DOCUMENTATION COVERED UNDER SEPARATE SUBMISSION NO. SSD5897
- SHARED INFRASTRUCTURE & FACILITIES
- VOID
- BASEMENT GFA
- SPATIAL PROVISION FOR FUEL CELLS/MICROTURBINES
- 27.9m² GFA COVERED UNDER SEPARATE DEVELOPMENT APPLICATION SSD 6966

FITOUT OF ROOMS SUBJECT TO DESIGN DEVELOPMENT PRIOR TO ISSUE CC.

PARKING IS INDICATIVE & SUBJECT TO FUTURE BUILDING APPROVALS.

ALL STRUCTURE IS FOR APPROVAL. LAYOUT IS INDICATIVE AND SUBJECT TO CHANGE.

	NON-RESIDENTIAL GFA (m²)
B0	30.4
B1	34.5
<b>TOTAL NON-RESIDENTIAL GFA (m²)</b>	<b>64.9</b>

**CURRENT REVISION COMMENTS**

Rev	CURRENT REVISION	Date
E	ISSUED FOR BASEMENT DA	29.08.19

1. STRUCTURE UPDATES FOR R4A AND R4B TOWERS  
 2. MANAGEMENT ROOM LAYOUTS FOR DDA ACCESSIBILITY REQUIREMENTS

FORMER DIESEL GENERATOR ROOM. GENERATORS ARE TO BE REMOVED

SERVICES ZONE REFER TO CIVIL ENGINEERING CONSULTANTS



PRINCIPAL ARCHITECT:  
**RPBW**  
RES-20 REANO BUILDING WORKSHOP  
Via P.O. Boxes 29, 16158 Omaha - Italy  
Emanuela Baglietto | Nominated Architect  
NSW ARB 9512

EXECUTIVE ARCHITECT:  
Lendlease - Integrated Solutions  
AGN51 632 932 351  
Level 14 Tower 17, International Towers Sydney  
Exchange Place, 300 Barangaroo Ave, Barangaroo, NSW, 2000  
Stephanie Smith | Nominated Architect  
NSW ARB 6480

**STAGE 1B BASEMENT SSD6960  
BASEMENT PLAN LEVEL B1**

Scale 1:250 @ A1 Scale 1:500 @ A3



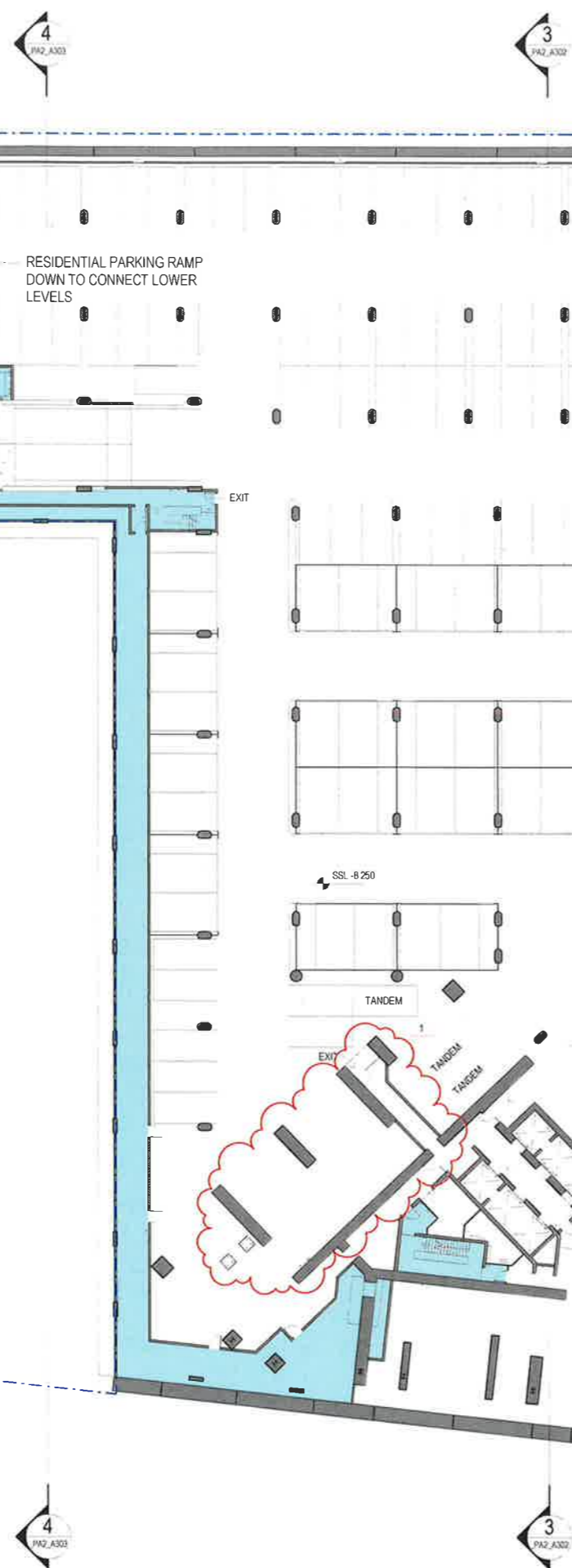
Drawing: BB2\_PA2\_A101

Date: 29.08.19

Revision: E

DEVELOPMENT APPLICATION





- LEGEND**
- BARANGAROO SOUTH SITE BOUNDARY
  - CONCRETE IN-SITU RETAINING WALL
  - PERIMETER RETAINING WALL DOCUMENTATION COVERED UNDER SEPARATE SUBMISSION NO. SSD5897
  - SHARED INFRASTRUCTURE & FACILITIES
  - VOID
  - BASEMENT GFA
  - SPATIAL PROVISION FOR FUEL CELLS/MICROTURBINES
  - 27.9m² GFA COVERED UNDER SEPARATE DEVELOPMENT APPLICATION SSD 6966

FITOUT OF ROOMS SUBJECT TO DESIGN DEVELOPMENT PRIOR TO ISSUE CC.

PARKING IS INDICATIVE & SUBJECT TO FUTURE BUILDING APPROVALS.

ALL STRUCTURE IS FOR APPROVAL. LAYOUT IS INDICATIVE AND SUBJECT TO CHANGE.

	NON-RESIDENTIAL GFA (m²)
B0	30.4
B1	34.5
<b>TOTAL NON-RESIDENTIAL GFA (m²)</b>	<b>64.9</b>

**CURRENT REVISION COMMENTS**

Rev	DESCRIPTION	DATE
1	ISSUED FOR BASEMENT DR	29/08/19
2	STRUCTURE UPDATES FOR R4A AND R4B TOWERS	

**NSW GOVERNMENT** | **Planning, Industry & Environment**

Issued under the Environmental Planning and Assessment Act 1979

Approved Section 4.55 (..... 1A ..... ) Modification Application

No. 3 Granted on 10/12/2019

In respect to SSD 6960

Signed [Signature]

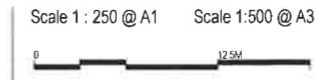
Sheet No 5 of 6



PRINCIPAL ARCHITECT:  
**RPBW**  
 RESO PLANNING WORKSHOP  
 Via 2/11, Kaban 29, 16158 Goscha - Bldg  
 Emanuele Baglietto | Nominated Architect  
 NSW ARB 9512

EXECUTIVE ARCHITECT:  
 Lendlease - Integrated Solutions  
 ABN 51 632 932 391  
 Level 14 Tower 7/100 International Towers  
 Sydney  
 Exchange Place 300 Barangaroo Ave.  
 Barangaroo NSW 2000  
 Stephanie Smith | Nominated Architect  
 NSW ARB 6480

**STAGE 1B BASEMENT SSD6960  
 BASEMENT PLAN LEVEL B3**



Drawing: BB2\_PA2\_A103  
 Date: 29.08.19    Revision: D  
 DEVELOPMENT APPLICATION

1  
PA2\_A300

2  
PA2\_A301

4  
PA2\_A303

3  
PA2\_A302

1  
PA2\_A300

2  
PA2\_A301

4  
PA2\_A303

3  
PA2\_A302

CENTRAL  
BARANGAROO

EXCAVATION OF ROCK TO  
FACILITATE FUTURE  
BASEMENT CONSTRUCTION

RESIDENTIAL PARKING RAMP  
DOWN TO CONNECT LOWER  
LEVELS

R5 RESIDENTIAL  
TOWER CORE

R4B RESIDENTIAL  
TOWER CORE

R4A RESIDENTIAL  
TOWER CORE

SSL -11.200

TOTAL CAR PARKING (INCLUDING TANDEM) 240  
TOTAL TANDEM 22

**NSW GOVERNMENT** | **Planning, Industry & Environment**

Issued under the Environmental Planning and Assessment Act 1979

Approved Section 4.55 (.....IA.....) Modification Application

No. 3 Granted on 10/12/2019

In respect to SSD 6960

Signed #

Sheet No 6 of 6

**LEGEND**

- BARANGAROO SOUTH SITE BOUNDARY
- CONCRETE IN-SITU RETAINING WALL
- PERIMETER RETAINING WALL DOCUMENTATION COVERED UNDER SEPARATE SUBMISSION NO. SSD5897
- SHARED INFRASTRUCTURE & FACILITIES
- VOID
- BASEMENT GFA
- SPATIAL PROVISION FOR FUEL CELLS/MICROTURBINES
- 27.9m<sup>2</sup> GFA COVERED UNDER SEPARATE DEVELOPMENT APPLICATION SSD 6966

FITOUT OF ROOMS SUBJECT TO DESIGN DEVELOPMENT PRIOR TO ISSUE CC.

PARKING IS INDICATIVE & SUBJECT TO FUTURE BUILDING APPROVALS.

ALL STRUCTURE IS FOR APPROVAL. LAYOUT IS INDICATIVE AND SUBJECT TO CHANGE.

	NON-RESIDENTIAL GFA (m <sup>2</sup> )
B0	30.4
B1	34.5
TOTAL NON-RESIDENTIAL GFA (m <sup>2</sup> )	64.9

**CURRENT REVISION COMMENTS**

Rev	CURRENT REVISION	Date
E	ISSUED FOR BASEMENT DA	29/08/19

1. STRUCTURE UPDATES FOR R4A AND R4B TOWERS  
2. R4A SEWAGE TREATMENT LAYOUT UPDATED

