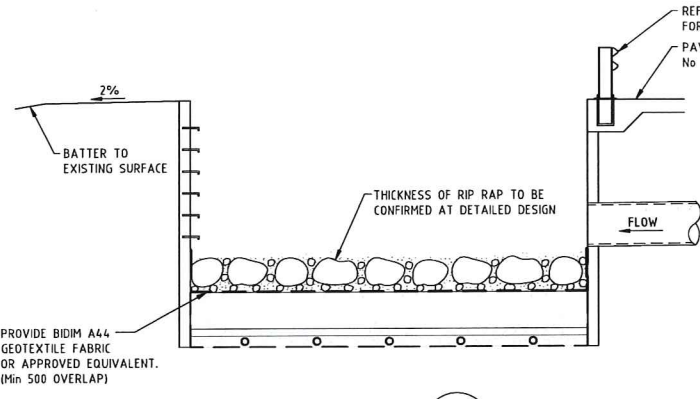
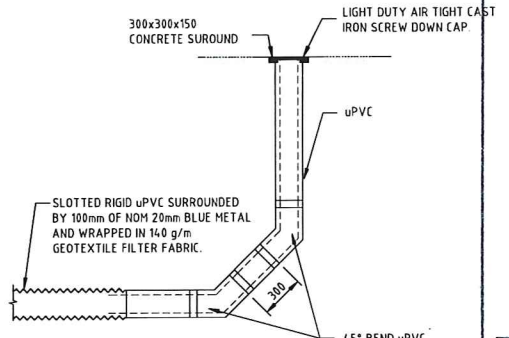


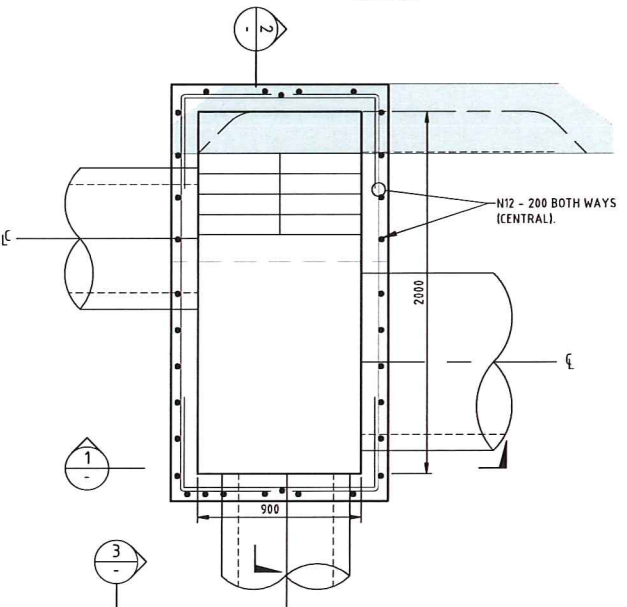
BIO-RETENTION BASIN OUTLET SCOUR PROTECTION PLAN
SCALE 1:50



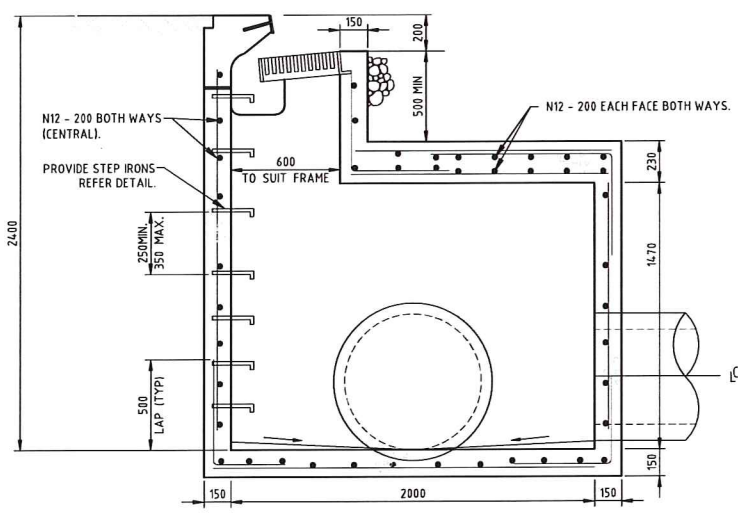
SECTION A
SCALE 1:50



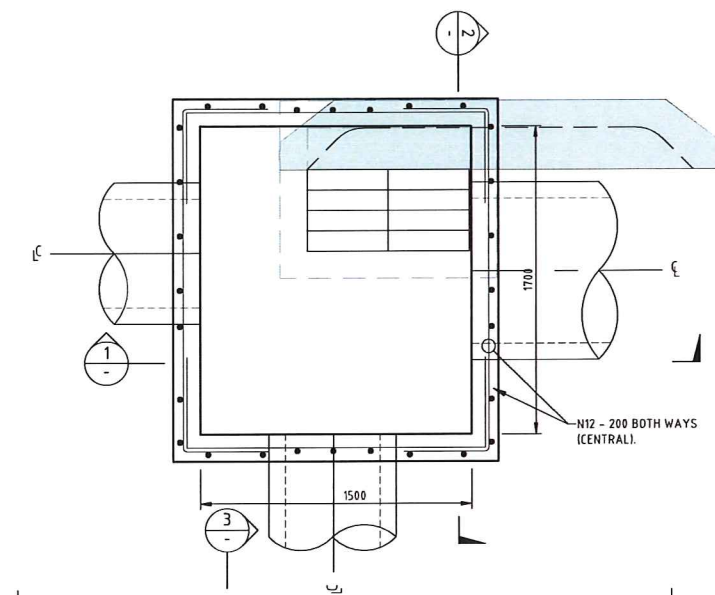
FLUSHING POINT DETAIL
SCALE 1:20



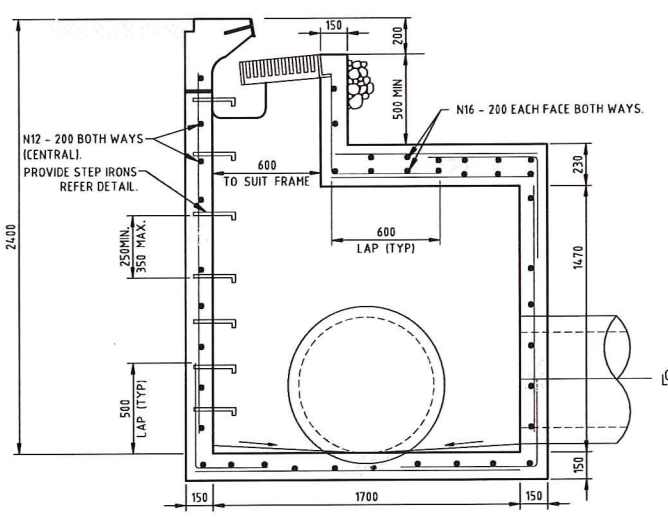
SECTION 1
SCALE 1:20



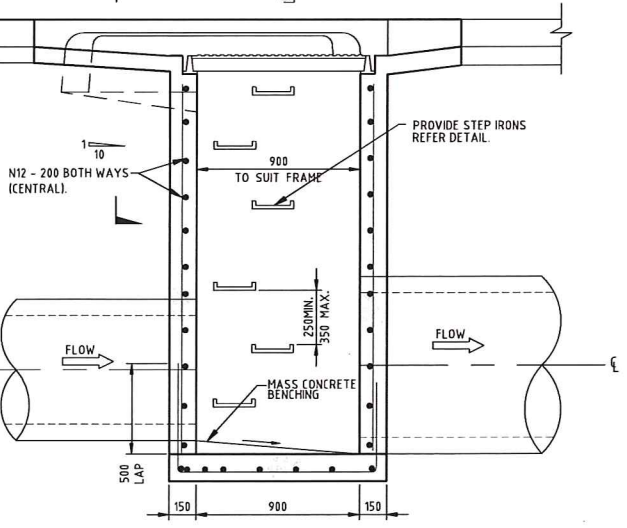
SECTION 2
SCALE 1:20



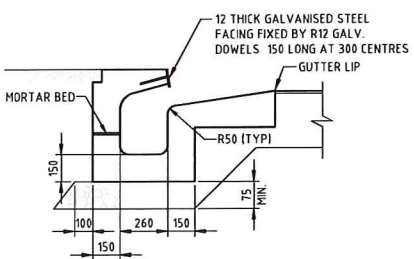
SECTION 1
SCALE 1:20



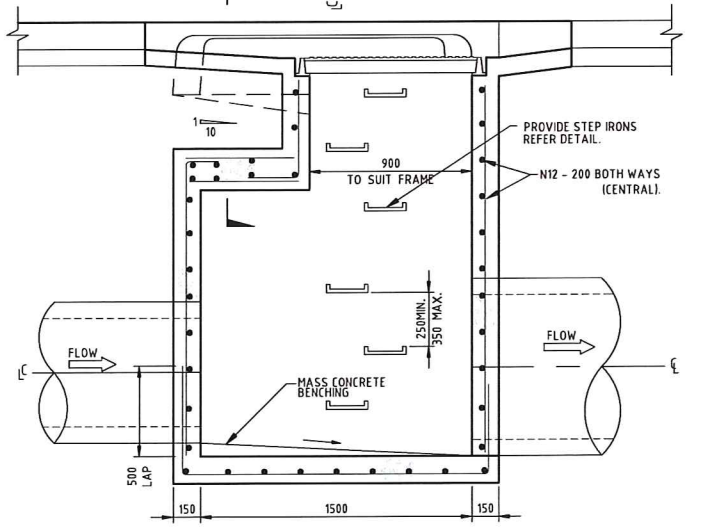
SECTION 2
SCALE 1:20



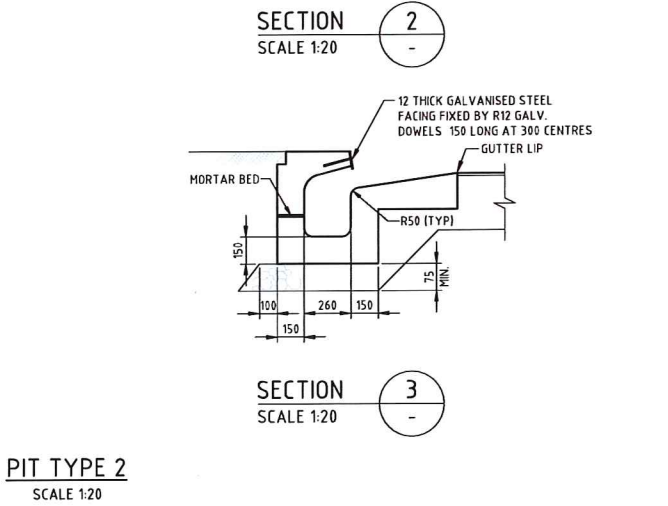
SECTION 1
SCALE 1:20



SECTION 3
SCALE 1:20



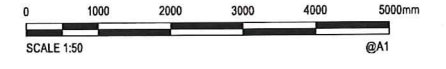
SECTION 1
SCALE 1:20



SECTION 2
SCALE 1:20

PIT TYPE 1
SCALE 1:20

PIT TYPE 2
SCALE 1:20



NSW GOVERNMENT
Planning

Issued under the Environmental Planning and Assessment Act 1979

Approved Application No. **SPD 6954**

granted on the **3/5/16**

Signed **TP**

Sheet No. **46** of **76**

Rev.	Date	Description	Des.	Verif.	Appd.
7	12.10.15	ISSUED FOR INFORMATION - PALETTE STORE RELOCATED	AS	DAC	SCP
6	05.08.15	REISSUED FOR DEVELOPMENT APPLICATION	AS	DAC	SCP
5	06.07.15	REISSUED FOR DEVELOPMENT APPLICATION	AS	DAC	SCP
4	10.06.15	REISSUED FOR TENDER	AS	DAC	SCP
3	29.05.15	ISSUED FOR TENDER	AS	DAC	SCP
2	04.05.15	FINAL DEVELOPMENT APPLICATION	AS	DAC	SCP
1	23.04.15	DEVELOPMENT APPLICATION	AS	DAC	SCP



© Cardno Limited All Rights Reserved.
 This document is produced by Cardno Limited solely for the benefit of and use by the client in accordance with the terms of the retainer. Cardno Limited does not and shall not assume any responsibility or liability whatsoever to any third party arising out of any use or reliance by third party on the content of this document.

Cardno
Shaping the Future

Cardno (NSWI) Pty Ltd | ABN 95 001 145 035
 Level 9, The Forum, 203 Pacific Highway
 St Leonards, NSW 2065
 Tel: 02 9496 7700 Fax: 02 9439 5170
 Web: www.cardno.com.au

Drawn	Date	Client
BJH	12.10.15	FDC BUILDING
Checked	Date	Project
DAC	12.10.15	IKEA MFL
Designed	Date	Project
AS	12.10.15	MARSDEN PARK INDUSTRIAL PRECINCT DEVELOPMENT APPLICATION
Verified	Date	Title
DAC	12.10.15	STORMWATER DRAINAGE DETAILS SHEET 2
Approved	Date	
SCP	12.10.15	

Status	FOR INFORMATION ONLY NOT TO BE USED FOR CONSTRUCTION PURPOSES		
Datum	Scale	Size	
AHD	AS SHOWN	A1	
Drawing Number	Revision		
80215051-01-1422		7	

DATE PLOTTED: 12 October 2015 3:16 PM BY: BRITTANY HOLZHEIMER



NSW GOVERNMENT
Planning

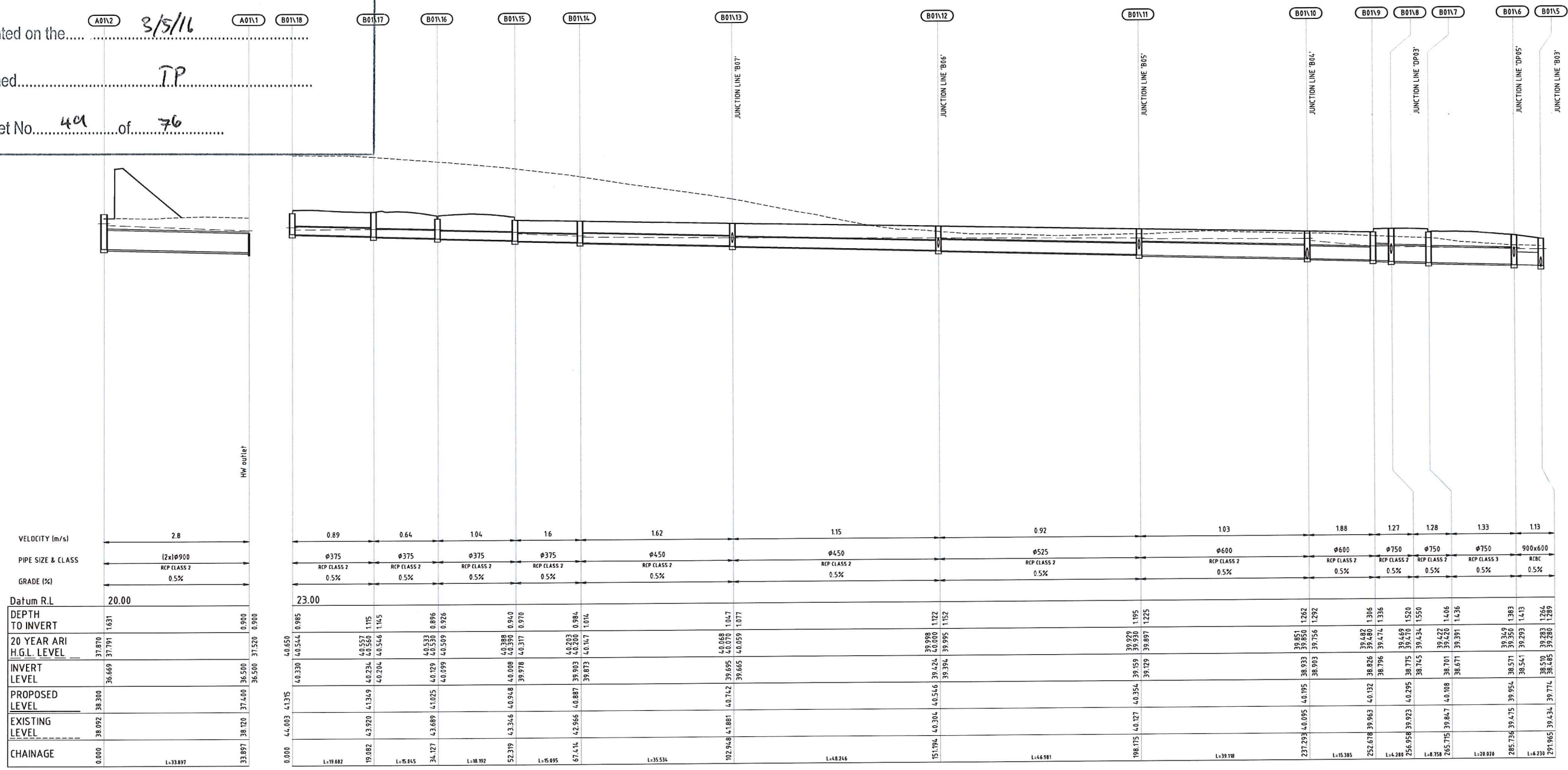
Issued under the Environmental Planning and Assessment Act 1979

Approved Application No. 590 6954

granted on the 3/5/16

Signed TP

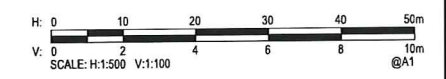
Sheet No. 49 of 76



VELOCITY (m/s)	PIPE SIZE & CLASS	GRADE (%)	Datum R.L.	DEPTH TO INVERT	20 YEAR ARI H.G.L. LEVEL	INVERT LEVEL	PROPOSED LEVEL	EXISTING LEVEL	CHAINAGE
2.8	12xØ900 REP CLASS 2	0.5%	20.00	1.431	37.870	36.669	38.300	38.092	0.000
0.89	Ø375 REP CLASS 2	0.5%	23.00	40.544	40.557	40.234	43.369	43.920	19.082
0.64	Ø375 REP CLASS 2	0.5%		40.566	40.204	40.129	43.689	43.889	34.127
1.04	Ø375 REP CLASS 2	0.5%		40.546	40.530	40.509	41.025	43.346	52.319
1.6	Ø375 REP CLASS 2	0.5%		0.940	40.388	40.008	40.348	43.317	67.414
1.62	Ø450 REP CLASS 2	0.5%		0.970	40.317	40.317	40.317	42.566	102.248
1.15	Ø450 REP CLASS 2	0.5%		1.071	40.068	39.695	40.742	41.881	151.194
0.92	Ø525 REP CLASS 2	0.5%		1.152	40.000	39.424	40.544	40.304	198.075
1.03	Ø600 REP CLASS 2	0.5%		1.225	39.998	39.159	40.354	40.075	237.293
1.88	Ø600 REP CLASS 2	0.5%		1.262	39.995	38.933	40.195	40.095	256.958
1.27	Ø750 REP CLASS 2	0.5%		1.336	39.482	38.826	40.132	39.963	285.678
1.28	Ø750 REP CLASS 2	0.5%		1.550	39.469	38.775	40.295	39.923	304.289
1.33	Ø750 REP CLASS 3	0.5%		1.066	39.422	38.701	40.108	39.847	323.755
1.13	900x600 RBC	0.5%		1.289	39.269	38.571	39.954	39.475	342.820
					39.283	38.541	39.510	39.283	361.965
					1.264	39.280	39.485	39.280	381.965
					1.289	39.280	39.774	39.434	397.974

LINE A01

LINE B01



Rev.	Date	Description	Des.	Verif.	Appd.
8	12.10.15	ISSUED FOR INFORMATION - PALETTE STORE RELOCATED	AS	DAC	SCP
7	05.08.15	REISSUED FOR DEVELOPMENT APPLICATION	AS	DAC	SCP
6	09.07.15	REISSUED FOR DEVELOPMENT APPLICATION	AS	DAC	SCP
5	06.07.15	REISSUED FOR DEVELOPMENT APPLICATION	AS	DAC	SCP
4	10.06.15	REISSUED FOR TENDER	AS	DAC	SCP
3	29.05.15	ISSUED FOR TENDER	AS	DAC	SCP
2	04.05.15	FINAL DEVELOPMENT APPLICATION	AS	DAC	SCP
1	23.04.15	DEVELOPMENT APPLICATION	AS	DAC	SCP



© Cardno Limited All Rights Reserved.
This document is produced by Cardno Limited solely for the benefit of and use by the client in accordance with the terms of the retainer. Cardno Limited does not and shall not assume any responsibility or liability whatsoever to any third party arising out of any use or reliance by third party on the content of this document.

Cardno (NSW/ACT) Pty Ltd | ABN 95 001 145 035
Level 9, The Forum, 203 Pacific Highway
St Leonards, NSW 2065
Tel: 02 9496 7700 Fax: 02 9439 5170
Web: www.cardno.com.au

Drawn: BJH	Date: 12.10.15	Client: FDC BUILDING
Checked: DAC	Date: 12.10.15	Project: IKEA MFLU
Designed: AS	Date: 12.10.15	MARSDEN PARK INDUSTRIAL PRECINCT
Verified: DAC	Date: 12.10.15	DEVELOPMENT APPLICATION
Approved: SCP	Date: 12.10.15	Title: STORMWATER DRAINAGE LONGITUDINAL SECTIONS SHEET 1
Status: FOR INFORMATION ONLY		NOT TO BE USED FOR CONSTRUCTION PURPOSES
Datum: AHD	Scale: AS SHOWN	Size: A1
Drawing Number: 80215051-01-1461	Revision: 8	

DATE PLOTTED: 12 October 2015 3:16 PM BY: BRITANNY HOLZHEIMER



NSW GOVERNMENT
Planning

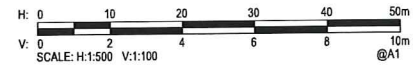
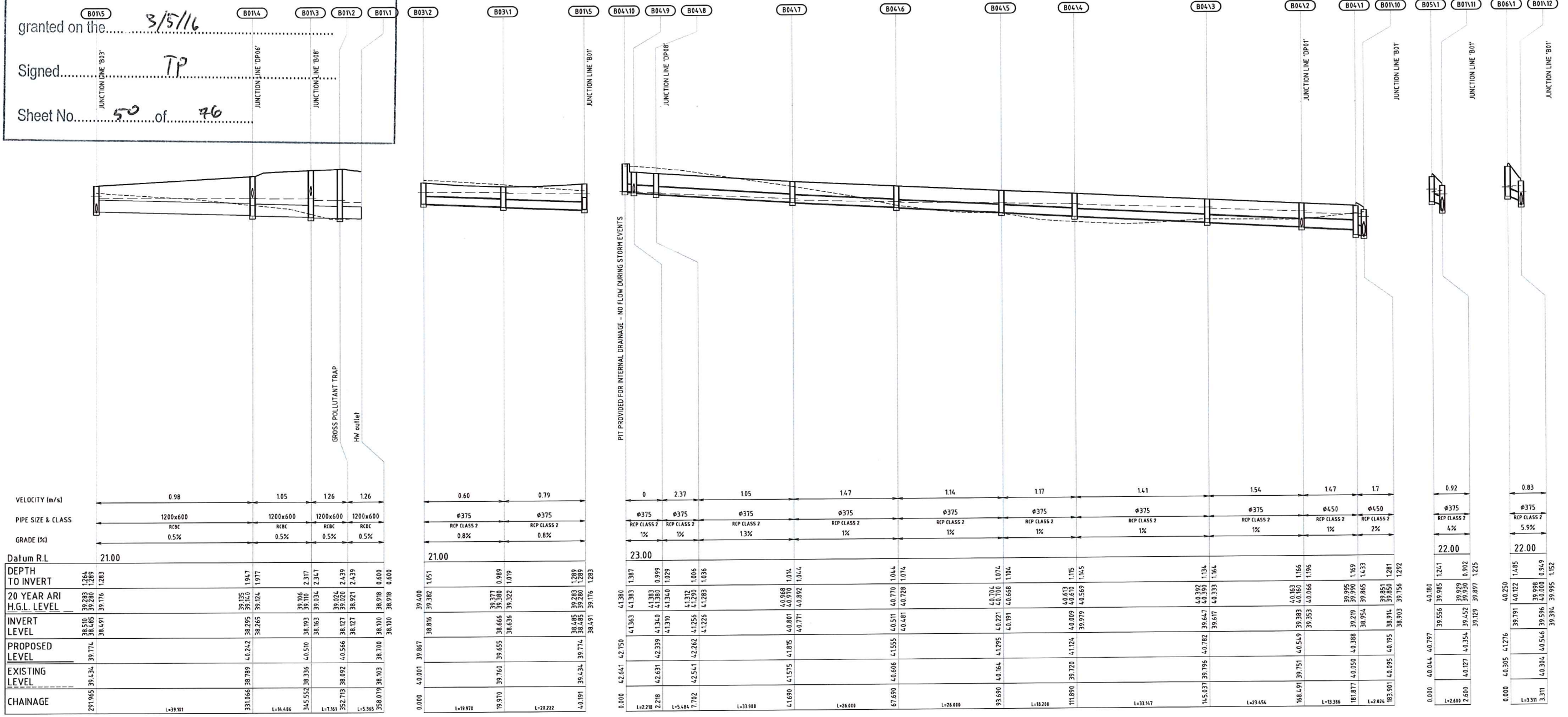
Issued under the Environmental Planning and Assessment Act 1979

Approved Application No. **SSD 6954**

granted on the **3/5/16**

Signed **TP**

Sheet No. **50** of **76**



XREFS: XLS-SWD-Compiled: Xref-80215051-01-Client Logos
CAD File: N:\Projects\80215051_IKEA_MFLU\Drawings\80215051-01-1461-1466-DWG(B).dwg

Rev.	Date	Description	Des.	Verif.	Appd.
8	12.10.15	ISSUED FOR INFORMATION - PALETTE STORE RELOCATED	AS	DAC	SCP
7	05.08.15	REISSUED FOR DEVELOPMENT APPLICATION	AS	DAC	SCP
6	09.07.15	REISSUED FOR DEVELOPMENT APPLICATION	AS	DAC	SCP
5	06.07.15	REISSUED FOR DEVELOPMENT APPLICATION	AS	DAC	SCP
4	10.06.15	REISSUED FOR TENDER	AS	DAC	SCP
3	29.05.15	ISSUED FOR TENDER	AS	DAC	SCP
2	04.05.15	FINAL DEVELOPMENT APPLICATION	AS	DAC	SCP
1	23.04.15	DEVELOPMENT APPLICATION	AS	DAC	SCP

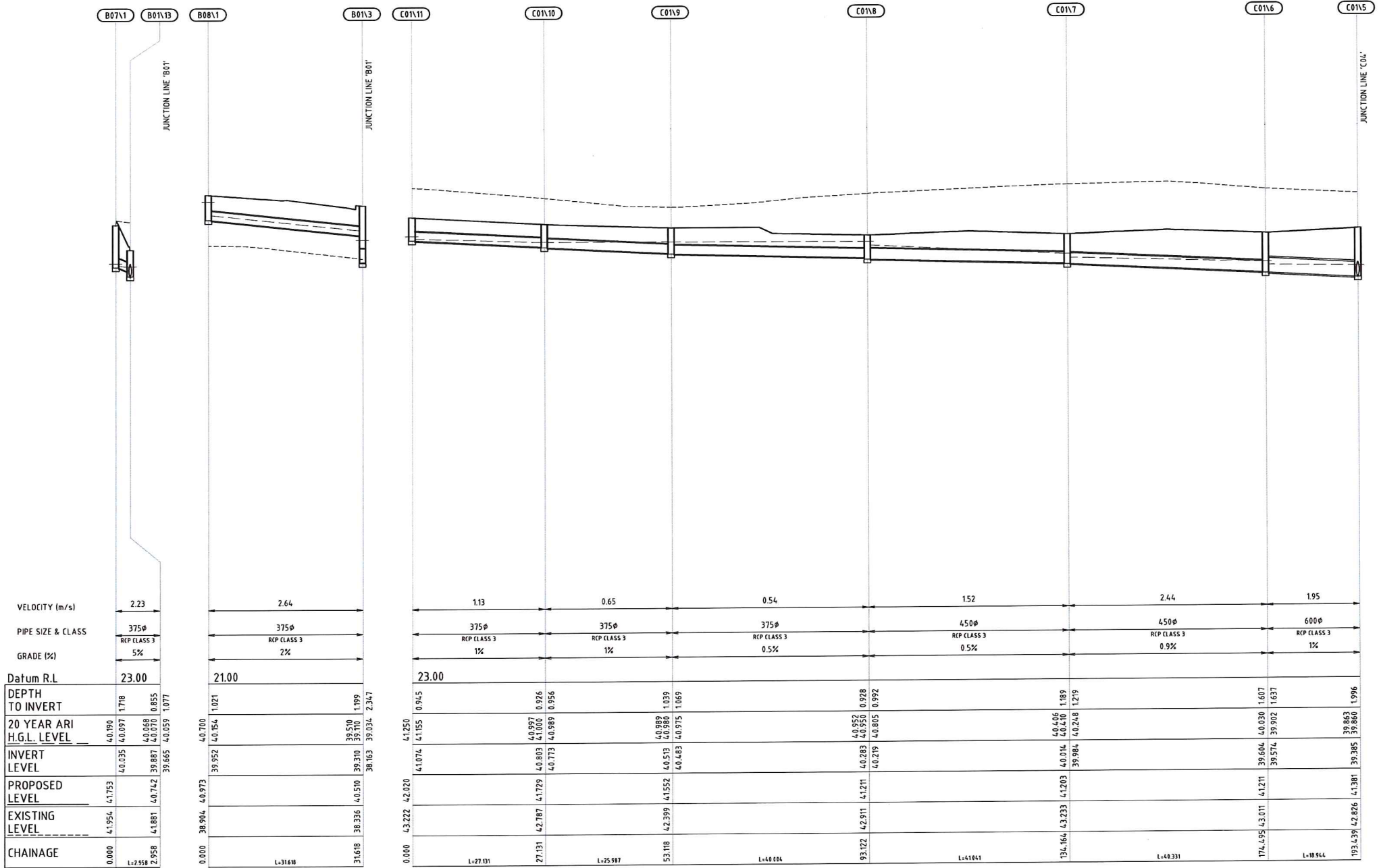


© Cardno Limited All Rights Reserved.
This document is produced by Cardno Limited solely for the benefit of and use by the client in accordance with the terms of the retainer. Cardno Limited does not and shall not assume any responsibility or liability whatsoever to any third party arising out of any use or reliance by third party on the content of this document.

Cardno
Shaping the Future

Cardno (NSW/ACT) Pty Ltd | ABN 95 001 145 035
Level 9, The Forum, 203 Pacific Highway
St Leonards, NSW 2065
Tel: 02 9496 7700 Fax: 02 9439 5170
Web: www.cardno.com.au

Drawn BJH	Date 12.10.15	Client FDC BUILDING
Checked DAC	Date 12.10.15	Project IKEA MFLU MARSDEN PARK INDUSTRIAL PRECINCT DEVELOPMENT APPLICATION
Designed AS	Date 12.10.15	Status FOR INFORMATION ONLY NOT TO BE USED FOR CONSTRUCTION PURPOSES
Verified DAC	Date 12.10.15	Datum AHD
Approved SCP	Date 12.10.15	Scale AS SHOWN
		Size A1
		Drawing Number 80215051-01-1462
		Revision 8



NSW GOVERNMENT
Planning

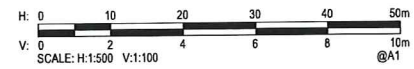
Issued under the Environmental Planning and Assessment Act 1979

Approved Application No. **SSD 6954**

granted on the **3/5/16**

Signed **TP**

Sheet No. **51** of **76**



Rev.	Date	Description	Des.	Verif.	Appd.
8	12.10.15	ISSUED FOR INFORMATION - PALETTE STORE RELOCATED	AS	DAC	SCP
7	05.08.15	REISSUED FOR DEVELOPMENT APPLICATION	AS	DAC	SCP
6	09.07.15	REISSUED FOR DEVELOPMENT APPLICATION	AS	DAC	SCP
5	06.07.15	REISSUED FOR DEVELOPMENT APPLICATION	AS	DAC	SCP
4	10.06.15	REISSUED FOR TENDER	AS	DAC	SCP
3	29.05.15	ISSUED FOR TENDER	AS	DAC	SCP
2	04.05.15	FINAL DEVELOPMENT APPLICATION	AS	DAC	SCP
1	23.04.15	DEVELOPMENT APPLICATION	AS	DAC	SCP



© Cardno Limited All Rights Reserved.
This document is produced by Cardno Limited solely for the benefit of and use by the client in accordance with the terms of the retainer. Cardno Limited does not and shall not assume any responsibility or liability whatsoever to any third party arising out of any use or reliance by third party on the content of this document.

Cardno
Shaping the Future

Cardno (NSW/ACT) Pty Ltd | ABN 95 001 145 035
Level 9, The Forum, 203 Pacific Highway
St Leonards, NSW 2065
Tel: 02 9496 7700 Fax: 02 9439 5170
Web: www.cardno.com.au

Drawn BJH Checked DAC Designed AS Verified DAC Approved SCP	Date 12.10.15 12.10.15 12.10.15 12.10.15 12.10.15 12.10.15	Client FDC BUILDING	Project IKEA MFLU MARSDEN PARK INDUSTRIAL PRECINCT DEVELOPMENT APPLICATION	Status FOR INFORMATION ONLY NOT TO BE USED FOR CONSTRUCTION PURPOSES
Title STORMWATER DRAINAGE LONGITUDINAL SECTIONS SHEET 3			Datum AHD	Scale AS SHOWN
Drawing Number 80215051-01-1463			Size A1	Revision 8

DATE PLOTTED: 12 October 2015 3:16 PM BY: BRITANNY HOLZHEIMER



NSW GOVERNMENT
Planning

Issued under the Environmental Planning and Assessment Act 1979

Approved Application No. SSD 6954

granted on the..... 3/5/16

Signed..... TP

Sheet No. 52 of 76

C015

JUNCTION LINE 'C01'

C014

C013

C012

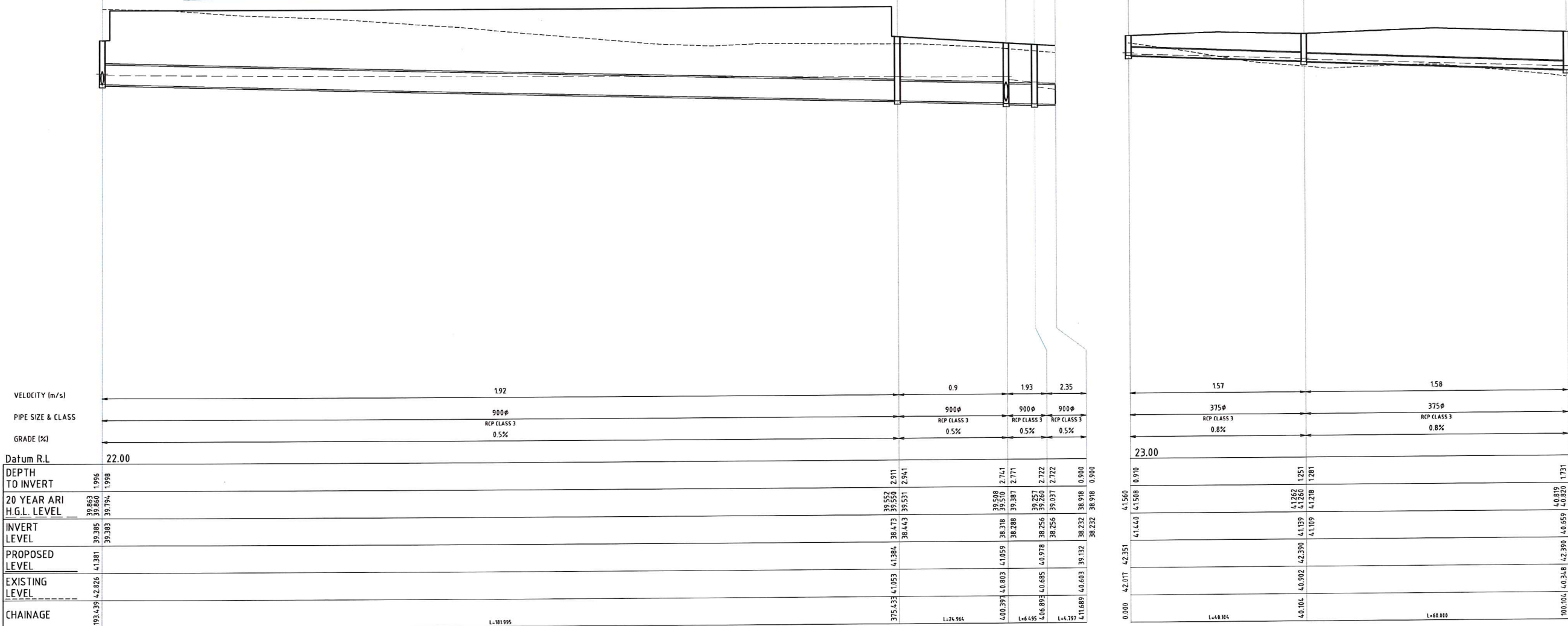
C011

C027

JUNCTION LINE 'C02'

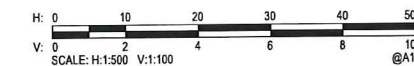
C0216

C0215



LINE C01

LINE C02



XREFS: X:\L-SWD-Complex\Xref-80215051-01-Client_Logos
CAD File: N:\Projects\80215051_IKEA_MFLU\Drawings\80215051-01-1461-1466-DWG(B).dwg

Rev.	Date	Description	Des.	Verif.	Appd.
8	12.10.15	ISSUED FOR INFORMATION - PALETTE STORE RELOCATED	AS	DAC	SCP
7	05.08.15	REISSUED FOR DEVELOPMENT APPLICATION	AS	DAC	SCP
6	09.07.15	REISSUED FOR DEVELOPMENT APPLICATION	AS	DAC	SCP
5	06.07.15	REISSUED FOR DEVELOPMENT APPLICATION	AS	DAC	SCP
4	10.06.15	REISSUED FOR TENDER	AS	DAC	SCP
3	29.05.15	ISSUED FOR TENDER	AS	DAC	SCP
2	04.05.15	FINAL DEVELOPMENT APPLICATION	AS	DAC	SCP
1	23.04.15	DEVELOPMENT APPLICATION	AS	DAC	SCP



© Cardno Limited All Rights Reserved.
This document is produced by Cardno Limited solely for the benefit of and use by the client in accordance with the terms of the retainer. Cardno Limited does not and shall not assume any responsibility or liability whatsoever to any third party arising out of any use or reliance by third party on the content of this document.

Cardno
Shaping the Future
Cardno (NSW/ACT) Pty Ltd | ABN 95 001 145 035
Level 9, The Forum, 203 Pacific Highway
St. Leonards, NSW 2065
Tel: 02 9496 7700 Fax: 02 9439 5170
Web: www.cardno.com.au

Drawn: BJH
Checked: DAC
Designed: AS
Verified: DAC
Approved: SCP

Date: 12.10.15
Client: **FDC BUILDING**
Project: **IKEA MFLU MARSDEN PARK INDUSTRIAL PRECINCT DEVELOPMENT APPLICATION**
Title: **STORMWATER DRAINAGE LONGITUDINAL SECTIONS SHEET 4**

Status: **FOR INFORMATION ONLY**
NOT TO BE USED FOR CONSTRUCTION PURPOSES
Datum: AHD
Scale: AS SHOWN
Size: A1
Drawing Number: **80215051-01-1464**
Revision: **8**

DATE PLOTTED: 12 October 2015 3:16 PM BY: BRITTANY HOLZHEIMER



NSW GOVERNMENT
Planning

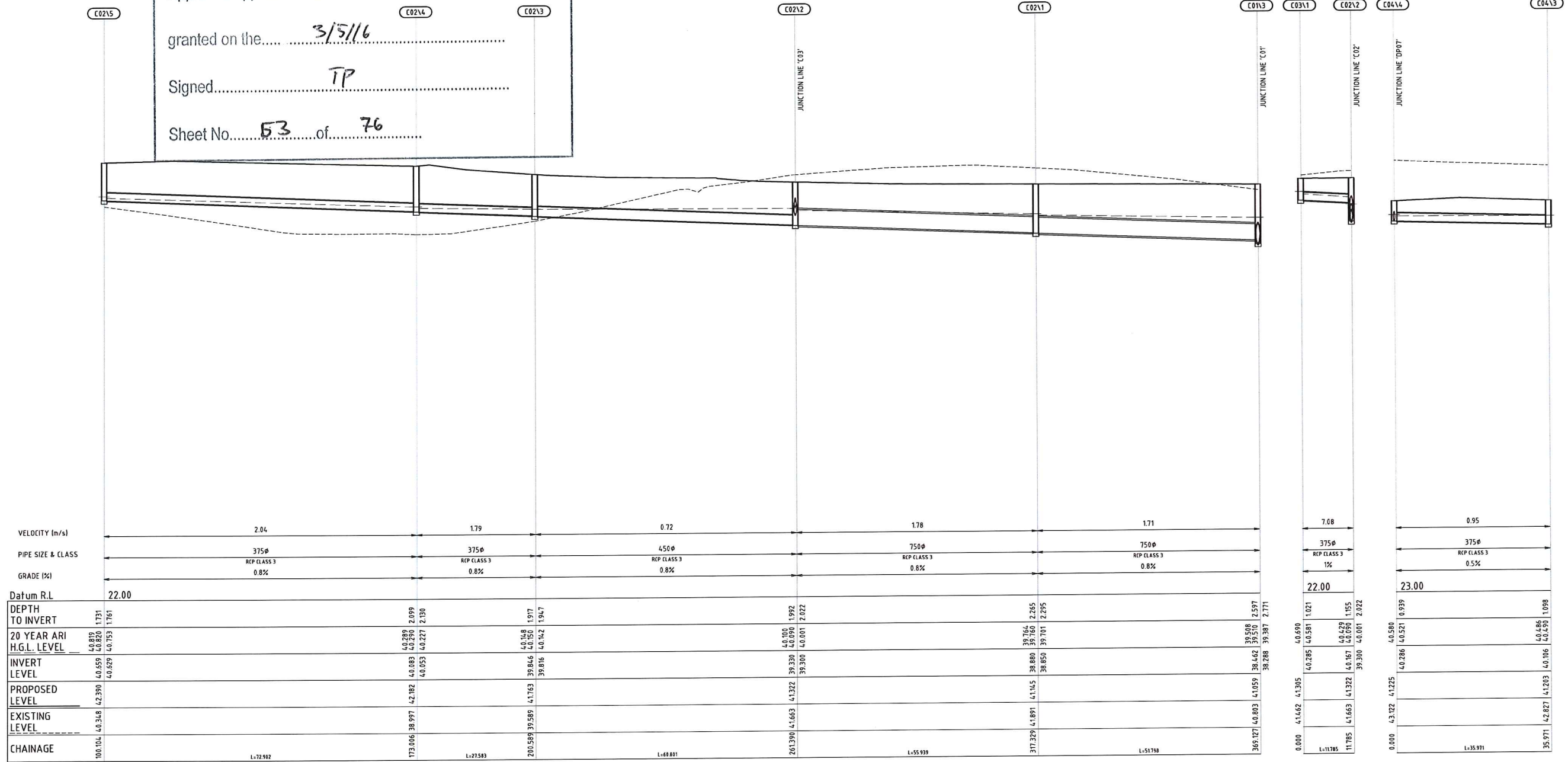
Issued under the Environmental Planning and Assessment Act 1979

Approved Application No. SSD 6954

granted on the 3/5/16

Signed TP

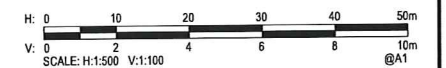
Sheet No. 53 of 76



LINE C02

LINE C03

LINE C04



XREF: X:\S-SWD-Comp\Kref-80215051-01-Client Logos
CAD File: N:\Projects\80215051_IKEA_MFLU\Drawings\Build\80215051-01-1461-1466-DWG(8).dwg

Rev	Date	Description	Des.	Verif.	Appd.
8	12.10.15	ISSUED FOR INFORMATION - PALETTE STORE RELOCATED	AS	DAC	SCP
7	05.08.15	REISSUED FOR DEVELOPMENT APPLICATION	AS	DAC	SCP
6	09.07.15	REISSUED FOR DEVELOPMENT APPLICATION	AS	DAC	SCP
5	06.07.15	REISSUED FOR DEVELOPMENT APPLICATION	AS	DAC	SCP
4	10.06.15	REISSUED FOR TENDER	AS	DAC	SCP
3	29.05.15	ISSUED FOR TENDER	AS	DAC	SCP
2	04.05.15	FINAL DEVELOPMENT APPLICATION	AS	DAC	SCP
1	23.04.15	DEVELOPMENT APPLICATION	AS	DAC	SCP



© Cardno Limited All Rights Reserved.
This document is produced by Cardno Limited solely for the benefit of and use by the client in accordance with the terms of the retainer. Cardno Limited does not and shall not assume any responsibility or liability whatsoever to any third party arising out of any use or reliance by third party on the content of this document.

Cardno
Shaping the Future
Cardno (NSWIAC) Pty Ltd | ABN 95 001 145 035
Level 9, The Forum, 203 Pacific Highway
St Leonards, NSW 2065
Tel: 02 9496 7700 Fax: 02 9439 5170
Web: www.cardno.com.au

Drawn	BJH	Date	12.10.15
Checked	DAC	Date	12.10.15
Designed	AS	Date	12.10.15
Verified	DAC	Date	12.10.15
Approved	SCP	Date	12.10.15

Client: **FDC BUILDING**
Project: **IKEA MFLU MARSDEN PARK INDUSTRIAL PRECINCT DEVELOPMENT APPLICATION**
Title: **STORMWATER DRAINAGE LONGITUDINAL SECTIONS SHEET 5**

Status	FOR INFORMATION ONLY		
NOT TO BE USED FOR CONSTRUCTION PURPOSES			
Datum	AHD	Scale	AS SHOWN
Drawing Number	80215051-01-1465		Size
			A1
Revision			8

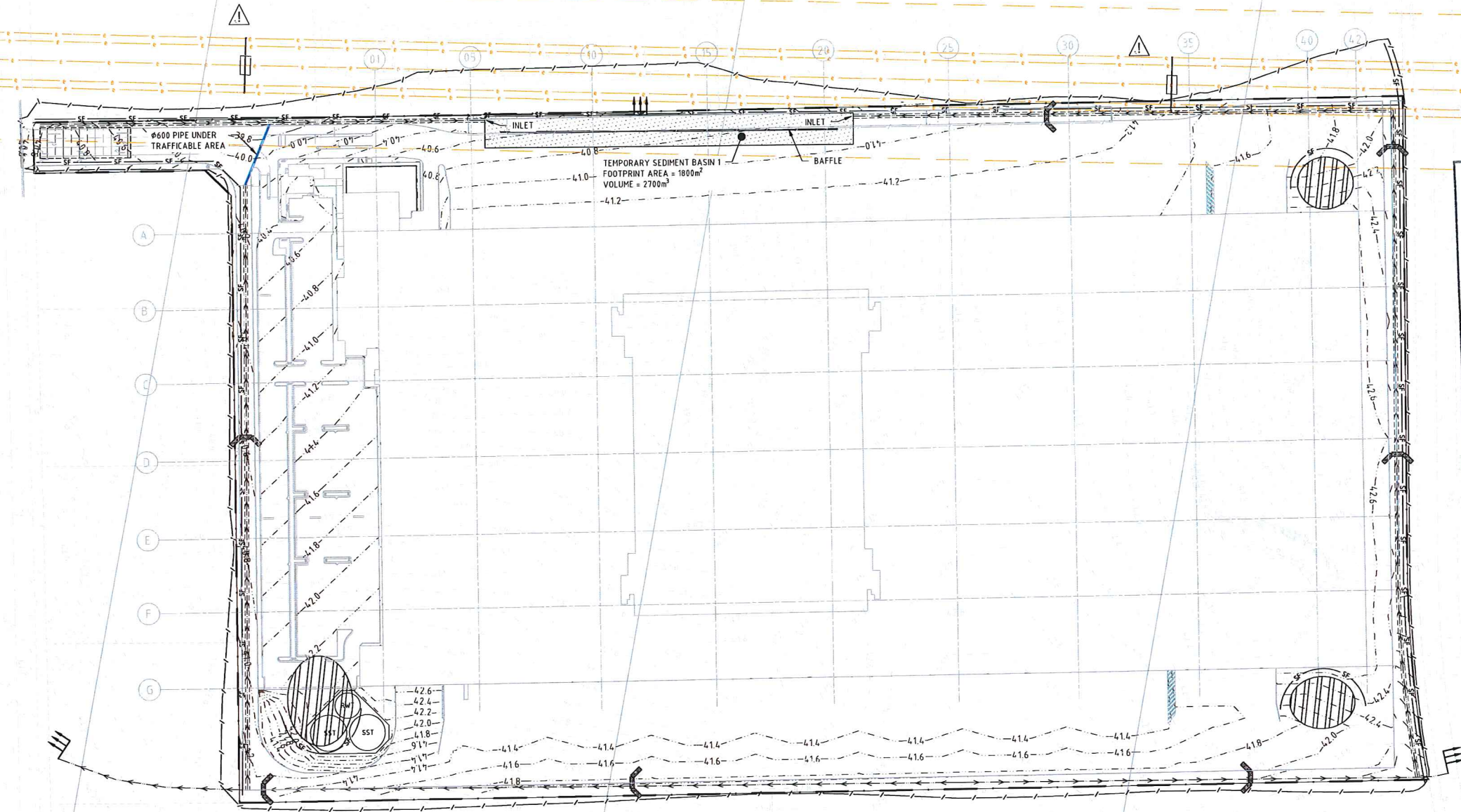
DATE PLOTTED: 12 October 2015 3:17 PM BY: BRITANNY HOLZHEIMER

XREFs: Xref-80215051-01-Site Boundary; Xref-80215051-01-Existing Services; Xref-80215051-01-Sheet Layout; X-CONT-east-1000; Xref-80215051-01-Client Logos; Xref-80215051-01-Design; X-CONT-DESIGN-1000
 CAD File: N:\Projects\80215051\15051_IKEA MFLU Drawings\80215051-01-1521-DWG(7).dwg

CAUTION DANGER
 EXISTING OVERHEAD HIGH VOLTAGE (TRANSGRID)



NOTES:
 1 TEMPORARY BASIN HAS BEEN INCLUDED FOR THE CIRCUMSTANCE WHERE BASIN B IS NOT AVAILABLE



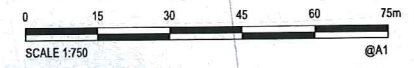
LEGEND

	SITE FENCE
	SILT FENCE
	CLEAN WATER DIVERSION CHANNEL
	DIRTY WATER DIVERSION CHANNEL
	STOCKPILE LOCATION
	STRAW BALE CHECK DAM
	LEVEL SPREADER
	STABILISED SITE ACCESS AND TRUCK WASH DOWN AREA

NSW GOVERNMENT Planning
 Issued under the Environmental Planning and Assessment Act 1979

Approved Application No. **SSD 6454**
 granted on the **3/5/16**
 Signed **TP**

Sheet No. **55** of **76**



Rev	Date	Description	Des.	Verif.	Appd.
7	12.10.15	ISSUED FOR INFORMATION - PALETTE STORE RELOCATED	AS	DAC	SCP
6	05.08.15	REISSUED FOR DEVELOPMENT APPLICATION	AS	DAC	SCP
5	06.07.15	REISSUED FOR DEVELOPMENT APPLICATION	AS	DAC	SCP
4	10.06.15	REISSUED FOR TENDER	AS	DAC	SCP
3	29.05.15	ISSUED FOR TENDER	AS	DAC	SCP
2	04.05.15	FINAL DEVELOPMENT APPLICATION	AS	DAC	SCP
1	23.04.15	DEVELOPMENT APPLICATION	AS	DAC	SCP



© Cardno Limited All Rights Reserved.
 This document is produced by Cardno Limited solely for the benefit of and use by the client in accordance with the terms of the retainer. Cardno Limited does not and shall not assume any responsibility or liability whatsoever to any third party arising out of any use or reliance by third party on the content of this document.

Cardno
 Shaping the Future

Cardno (NSWI/ACT) Pty Ltd | ABN 95 001 145 035
 Level 9, The Forum, 203 Pacific Highway
 St. Leonards, NSW 2065
 Tel: 02 9496 7700 Fax: 02 9439 5170
 Web: www.cardno.com.au

Drawn	BJH	Date	12.10.15
Checked	DAC	Date	12.10.15
Designed	AS	Date	12.10.15
Verified	DAC	Date	12.10.15
Approved	SCP	Date	12.10.15

Client: **FDC BUILDING**
 Project: **IKEA MFLU MARSDEN PARK INDUSTRIAL PRECINCT DEVELOPMENT APPLICATION**
 Title: **EROSION & SEDIMENT CONTROL PLAN**

Status	FOR INFORMATION ONLY		
NOT TO BE USED FOR CONSTRUCTION PURPOSES			
Datum	AHD	Scale	1:750
Drawing Number	80215051-01-1521	Size	A1
Revision			7

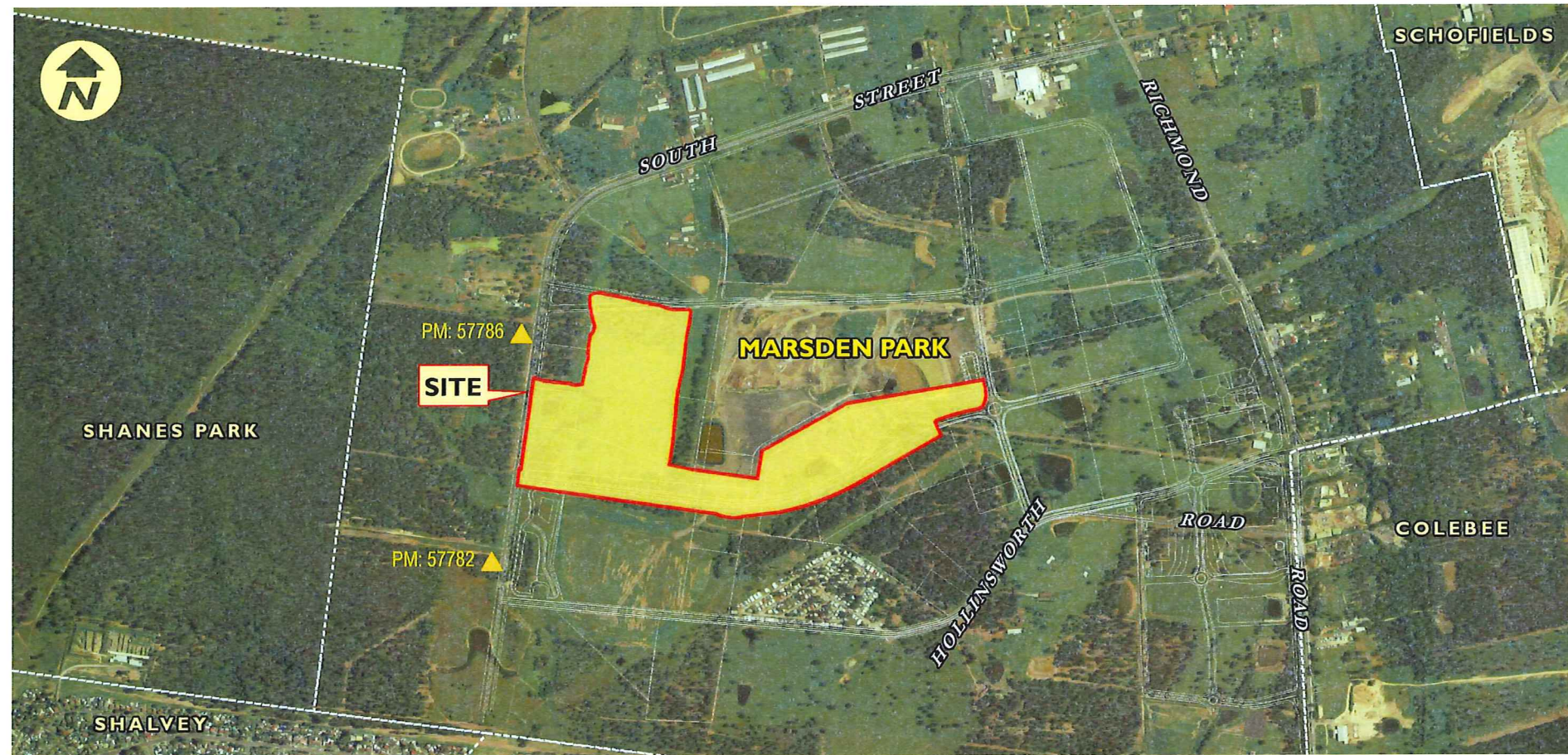
MARSDEN PARK INDUSTRIAL


STAGE 3.01 BASIN B DESIGN

DRAWING LIST

GENERAL	
000	COVER SHEET
001	GENERAL LAYOUT AND CATCHMENT PLAN
002	STANDARD NOTES AND LEGEND
ENGINEERING	
101	BIORETENTION BASIN B PLAN
102	BIORETENTION BASIN E PLAN
103	TYPICAL DETAILS SHEET 01 OF 02
104	TYPICAL DETAILS SHEET 02 OF 02
DRAINAGE	
802	SEDIMENT AND WATER MANAGEMENT NOTES & DETAILS

FOR DEVELOPMENT APPLICATION





NSW GOVERNMENT
Planning

Issued under the Environmental Planning and Assessment Act 1979

Approved Application No. SSD 6454

granted on the 3/5/16

Signed TP

Sheet No. 56 of 76

LOCALITY PLAN
N.T.S.

LGA BLACKTOWN CITY COUNCIL
LOT 32, 33, 34, 35 DP 262886
LOT 102 DP 1188147
LOT 128,132 DP 1194052

FILE: H:\11227\11227 - MARSDEN PARK INDUSTRIAL - E.P. 11227\11227 - STAGE 3.01 BASIN B DESIGN\11227_11227_01.DWG
 PRINTED: 10/11/16 10:00 AM