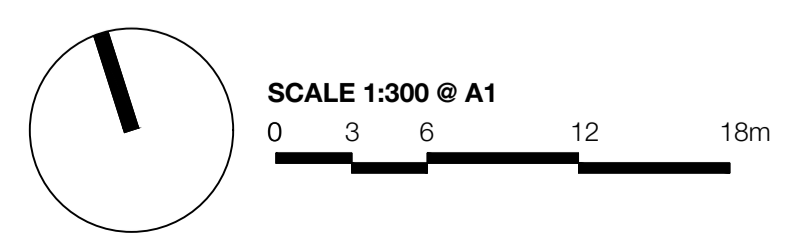




REFER TO LA400 SERIES FOR TYPICAL PLANTING

REFER TO LA400 SERIES FOR TYPICAL PLANTING

# LANDSCAPE PLANTING PLAN 1/2



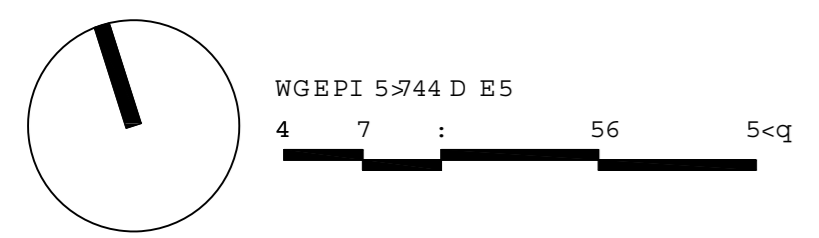
project: The Yards, Bomaderry  
 client: SCCH  
 date: 2024 10 30  
 revision: C  
 drawn: RA  
 checked: AL

**TaylorBrammer**  
 TAYLOR BRAMMER LANDSCAPE ARCHITECTS PTY LTD  
 218 Oxford Street Woodville, NSW, 2025 E: sydney@taylorbrammer.com.au T: 61 2 9387 8855  
 Copyright © Taylor Brammer Landscape Architects Pty Ltd. ABN 61 088 724 988

## LA301



# LANDSCAPE PLANTING PLAN 2/2



REFER TO LA400 SERIES  
FOR  
TYPICAL PLANTING

REFER TO LA400 SERIES  
FOR  
TYPICAL PLANTING

project: The Yards, Bomaderry  
client: SCCH  
date: 2024 10 22  
revision: B  
drawn: RA  
checked: AL

**TaylorBrammer**  
TAYLOR BRAMMER LANDSCAPE ARCHITECTS PTY LTD  
STONEY STUDIO  
218 Oxford Street Woolahra, NSW, 2025 E: sydney@taylorbrammer.com.au T: 61 2 9387 8855  
Copyright © Taylor Brammer Landscape Architects Pty Ltd 4891 61198 121 883

# LA302

## PLANT SCHEDULE

ID	BOTANICAL NAME	COMMON NAME	HEIGHT (m)	WIDTH (m)	SIZE	LANDSCAPE SUITABILITY
<b>TREES</b>						
Ac-bi	<i>Acacia binervata</i>	Two-Veined Hickory	15m	4m	100L	S, G, OS
Ac-fl	<i>Acacia floribunda</i>	Gossamer wattle	6m	3m	75L	G, OS
Al-li	<i>Allocasuarina littoralis</i>	Black Sheoak	8m	4m	75L	S, G, OS
Ba-se	<i>Banksia serrata</i>	Old Man Banksia	15m	4m	100L	S, G, OS
Ca-sa	<i>Callistemon salignus</i>	Willow Bottlebrush	10m	5m	100L	G, S, OS
Co-ma	<i>Corymbia maculata</i>	Spotted Gum	30m	10m	100L	S, G (large), OS
Eu-pa	<i>Eucalyptus paniculata</i>	Grey Ironbark	30m	10m	100L	S, G (large), OS
Eu-sc	<i>Eucalyptus sclerophylla</i>	Scribbly Gum	15m	10m	100L	S, G (large), OS
Ko-pa	<i>Koelreuteria paniculata</i>	Golden Rain	6m	4m	75L	R, OS, G (large)
Pr-bl	<i>Prunus x blireana</i>	Double Flowering Plum	6m	4m	75L	OS
Pi-ch	<i>Pistacia chinensis</i>	Pistacia	8m	6m	75L	OS, R, G (large), S
Sy-gl	<i>Syncarpia glomulifera</i>	Turpentine	25m	12m	100L	S, G (large), OS
Wo-bi	<i>Wodyetia bifurcata</i>	Foxtail Palm	8m	4m	75L	S, OS
<b>SHRUBS</b>						
Ac-bu	<i>Acacia buxifolia</i>	Box-Leaf Wattle	4m	2m	300mm	G
Ac-lo	<i>Acacia longifolia subsp. Longifolia</i>	Sydney Golden Wattle	4m	3m	300mm	G, OS
Ac-te	<i>Acacia terminalis</i>	Sunshine Wattle	2m	2m	300mm	G
Ac-sm	<i>Acmena smithii 'Minor'</i>	Dwarf Lily Pilly	3m	1.5m	300mm	G
Ba-er	<i>Banksia ericifolia subsp. Ericifolia</i>	Heath-leaved Banksia	3m	2.5m	300mm	G, OS
Ba-ru	<i>Bauera rubioides</i>	River Rose	2m	1.5m	300mm	G
Ca-ci	<i>Callistemon citrinus</i>	Crimson Bottlebrush	3m	2m	300mm	S, G, OS
Ca-te	<i>Calytrix tetragona</i>	Common Fringe-myrtle	2m	1.5m	300mm	G
Cr-pe	<i>Crinum pedunculatum</i>	Swamp Lily	1.5m	2m	300mm	G, OS
Do-tr	<i>Dodonaea triquetra</i>	Large-leaf Hop-bush	3m	2m	300mm	G
Do-ex	<i>Doryanthes excelsa</i>	Gynea Lily	4m	3m	300mm	G
Ga-gm	<i>Gardenia angusta 'Golden Magic'</i>	Fragrant Gardenia	1m	0.5m	300mm	G
Gr-hg	<i>Grevillea 'Honey Gem'</i>	Honey Gem	3.5m	1.8m	300mm	G, S, OS
Gr-bu	<i>Grevillea buxifolia</i>	Grey Spider Flower	2m	1.5m	300mm	G
Gr-rg	<i>Grevillea 'Robyn Gordon'</i>	Robyn Gordon Grevillea	1.5m	1.8m	300mm	G, S, OS
Lo-hy	<i>Lomandra Hystrix</i>	Creek Mat Rush	1.2m	1.2m	300mm	G, OS
Ph-gr	<i>Photinia glabra 'Rubens'</i>	Red Photinia	3m	3m	300mm	G
Pu-vi	<i>Pultenaea villosa</i>	Hairy Bush-pea	2m	3m	300mm	G
St-re	<i>Strelitzia reginae</i>	Bird of Paradise	1.2m	1.2m	300mm	G
Sy-ac	<i>Syzygium Aussie Compact</i>	Lily Pilly	5m	3m	300mm	G
<b>GROUNDCOVERS &amp; CLIMBERS</b>						
An-hy	<i>Anigozanthos hybrids</i>	Kangaroo Paw	1.5m	0.2m	200mm	G
Bl-nu	<i>Blechnum nudum</i>	Fishbone Water Fern	0.6m	0.6m	200mm	G
Di-ca	<i>Dianella caerulea</i>	Nodding Blue Lily	0.75m	1m	200mm	G, OS
Di-re	<i>Dichondra repens</i>	Kidney Weed	0.15m	1m	200mm	G
Gr-br	<i>Grevillea 'Bronze Rambler'</i>	Grevillea	0.5m	5m	200mm	G
Ha-vi	<i>Hardenbergia violacea</i>	Purple Coral Pea	3m	2m	200mm	G
Li-ma	<i>Liriope muscari</i>	Syn Liriope exiliflora	0.6m	0.5m	200mm	G
Lo-lo	<i>Lomandra longifolia</i>	Lomandra	1m	1m	200mm	G, OS
Lo-ta	<i>Lomandra 'Tanika'</i>	Tanika	0.6m	0.6m	200mm	G
Pr-pu	<i>Pratia purpurascens</i>	Whiteroot	0.3m	1m	200mm	G

### NOTE:

\* Plant quantities on planting plan take precedence over quantities identified in this schedule.

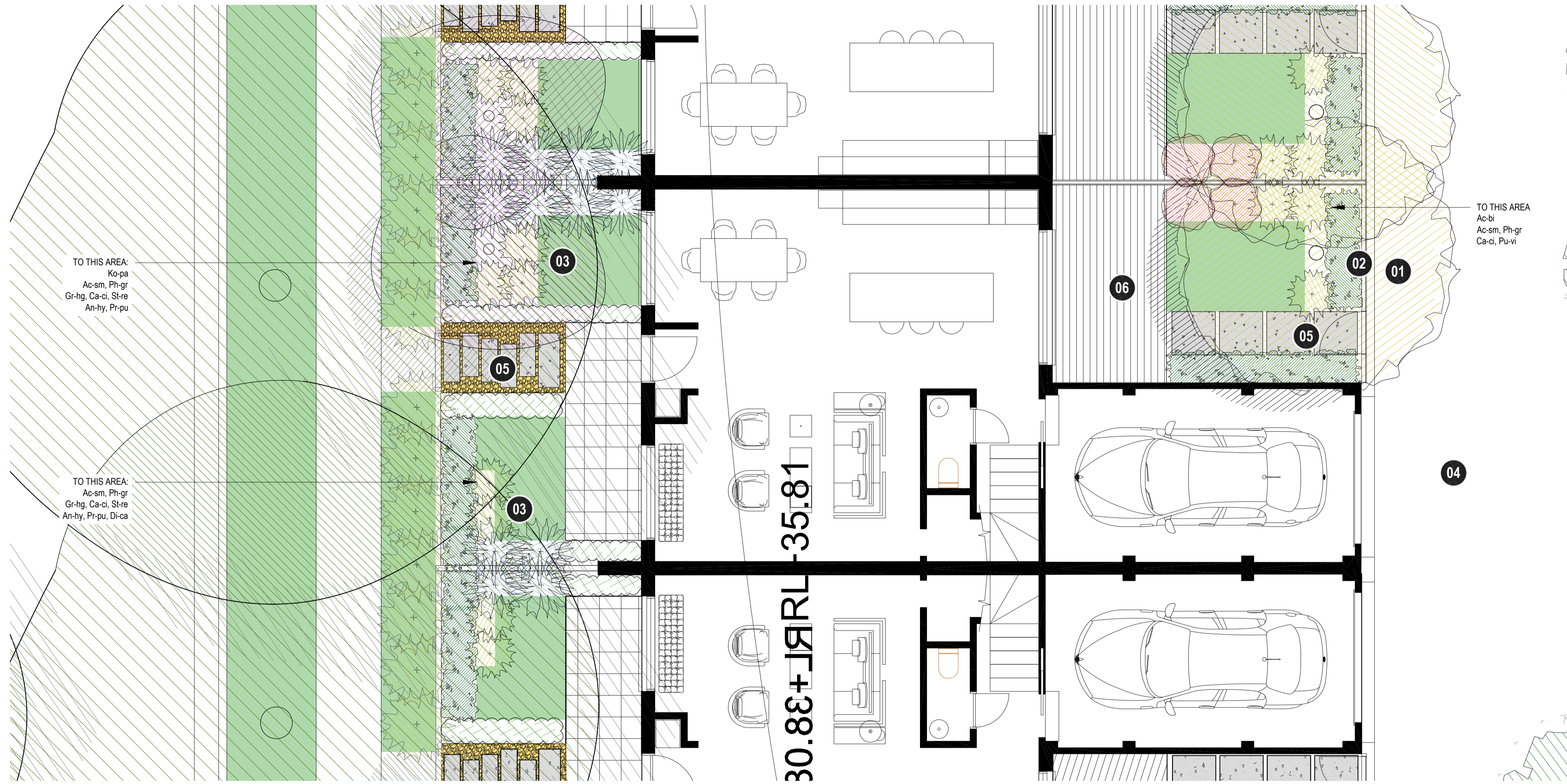
\* G = Garden, OS = Open Space, S = Street, R = Rural

# PLANTING SCHEDULE AND CHARACTER

project: The Yards, Bomaderry  
 client: SCCH  
 date: 2024 10 22  
 revision: B  
 drawn: RA  
 checked: AL

**TaylorBrammer**  
 TAYLOR BRAMMER LANDSCAPE ARCHITECTS PTY LTD  
 218 Oxford Street, Woodlawn, NSW, 2255 E: sydney@taylorbrammer.com.au  
 Copyright © Taylor Brammer Landscape Architects Pty Ltd

# LA303



### DESIGN NOTES

- 01 FEATURE TREE TO FRAME VIEW
- 02 SCREEN HEDGE TO BOUNDARY
- 03 LAYERED PLANTING TO PROVIDE AMENITY AND SCREENING
- 04 DRIVEWAY
- 05 STEPPERS IN DECOMPOSED GRANITE LEADING TO STREET
- 06 DECKING TO OPEN SPACE AREA

### PLANTING SCHEDULE

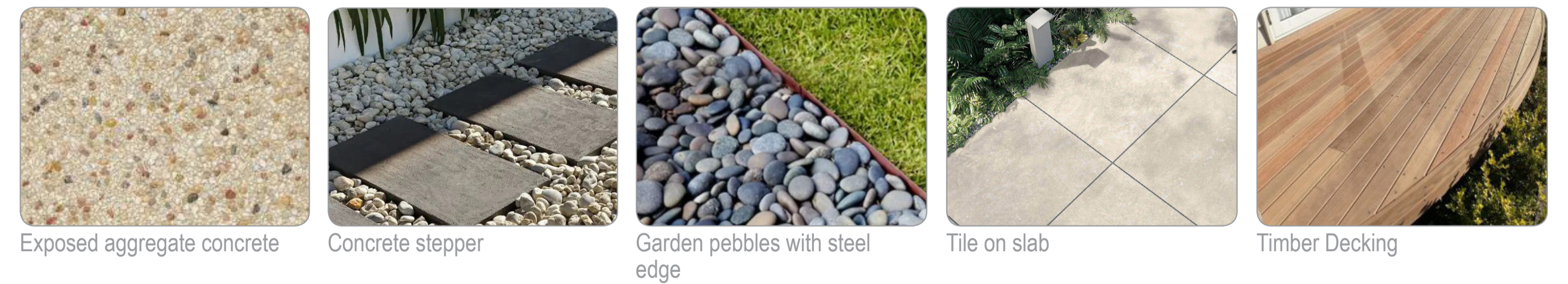
#### TYPICAL 3B ATTACHED HOUSING (LOT G)

ID	BOTANICAL NAME	COMMON NAME	HEIGHT (m)	WIDTH (m)	SIZE	LANDSCAPE SUITABILITY
Ac-bi	Tree	<i>Acacia binervata</i>	15m	4m	100L	S, G, OS
Ko-pa	Tree	<i>Koelreuteria paniculata</i>	6m	4m	75L	R, OS, G (large)
Ac-sm	Hedge	<i>Acmena smithii 'Minor'</i>	3m	1.5m	300mm	G
Ph-gr	Hedge	<i>Photinia glabra 'Rubens'</i>	3m	3m	300mm	G
Gr-hg	Feature	<i>Grevillea 'Honey Gem'</i>	3.5m	1.8m	300mm	G, S, OS
Ca-ci	Shrub	<i>Callistemon citrinus</i>	3m	2m	300mm	S, G, OS
Pu-vi	Shrub	<i>Pultenaea villosa</i>	2m	3m	300mm	G
St-re	Shrub	<i>Strelitzia reginae</i>	1.2m	1.2m	300mm	G
An-hy	Groundcover	<i>Anigozanthos hybrids</i>	0.4m	0.2m	200mm	G
Di-ca	Groundcover	<i>Dianella caerulea</i>	0.75m	1m	200mm	G, OS
Pr-pu	Groundcover	<i>Pratia purpurascens</i>	0.3m	1m	200mm	G

### PLANTING CHARACTER

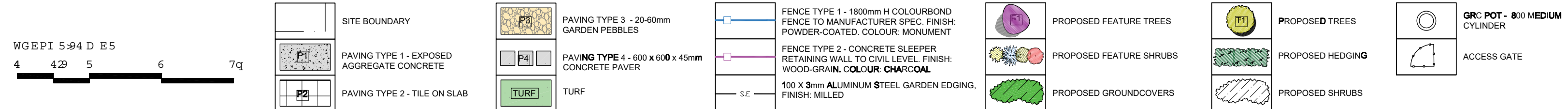


### MATERIAL PALETTE



# TYPICAL 3B (LOT G)

#### LEGEND



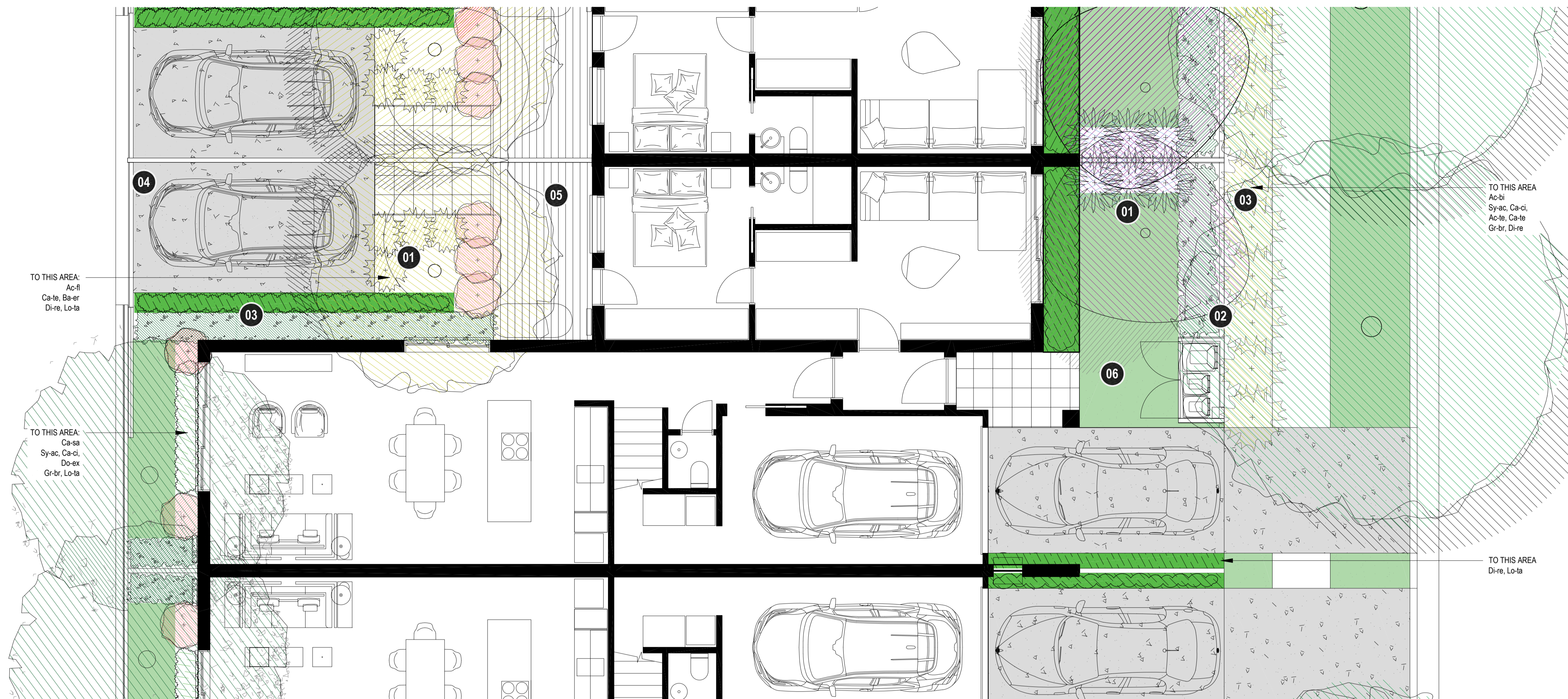
project: The Yards, Bomaderry  
 client: SCCH  
 date: 2024 10 22  
 revision: B  
 drawn: RA  
 checked: AL

**TaylorBrammer**  
 SYDNEY STUDIO  
 TAYLOR BRAMMER LANDSCAPE ARCHITECTS PTY LTD  
 218 Oxford Street Woollahra, NSW 2025 E: sydney@taylorbrammer.com.au T: 61 2 9387 8800  
 Copyright © Taylor Brammer Landscape Architects Pty Ltd 400 61 000 124 000

# LA400

## DESIGN NOTES

- 01 FEATURE TREE TO FRAME VIEW
- 02 SCREEN HEDGE TO BOUNDARY
- 03 LAYERED PLANTING TO PROVIDE AMENITY AND SCREENING
- 04 DRIVEWAY
- 05 DECKING TO OPEN SPACE AREA
- 06 OPEN LAWN AREA

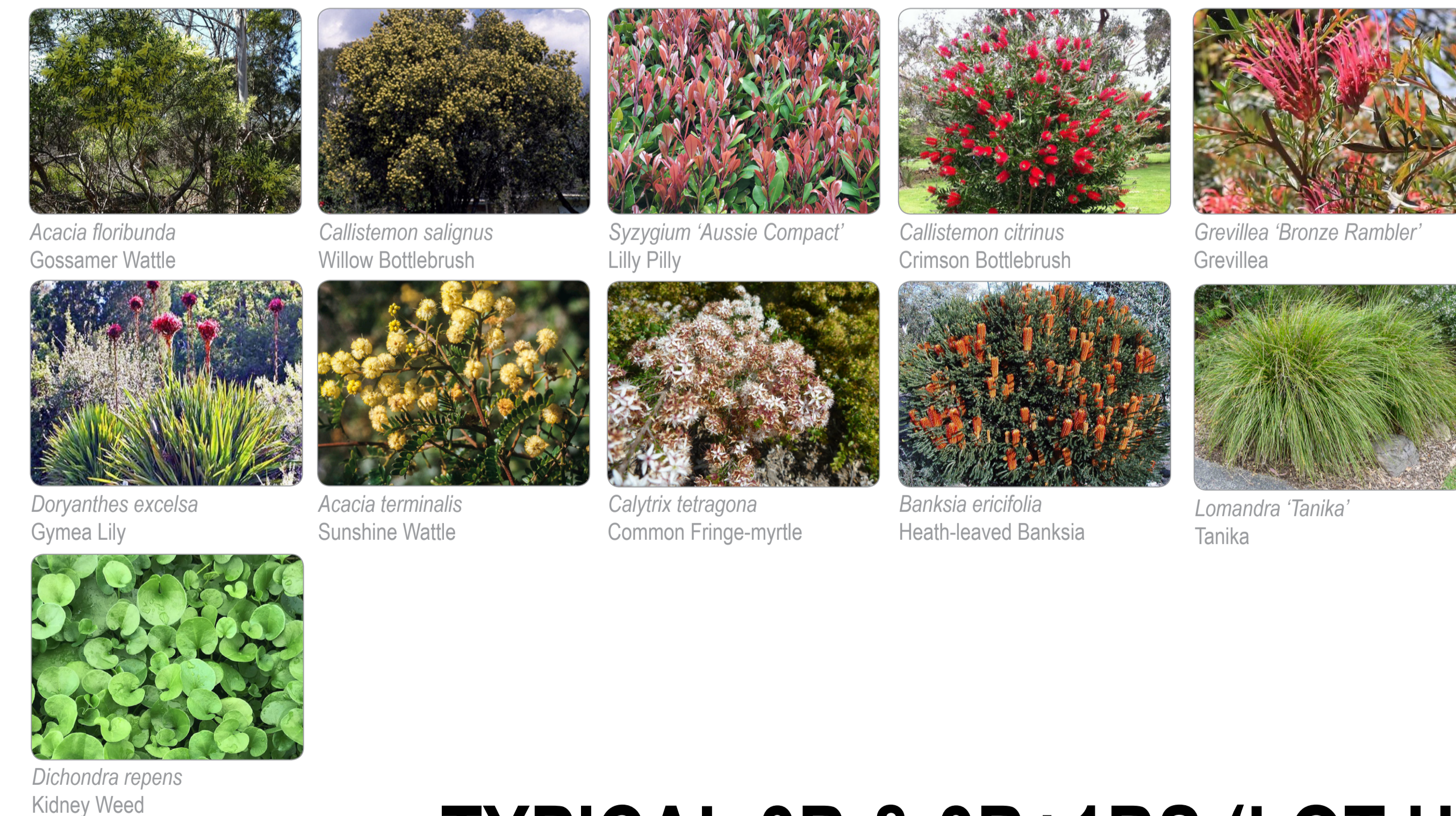


## PLANTING SCHEDULE

### TYPICAL 3B & 3B + 1BS ATTACHED HOUSING (LOT H)

ID	BOTANICAL NAME	COMMON NAME	HEIGHT (m)	WIDTH (m)	SIZE	LANDSCAPE SUITABILITY	
Ac-fl	Tree	<i>Acacia floribunda</i>	Gossamer Wattle	6m	3m	75L	G, OS
Ca-sa	Tree	<i>Callistemon salignus</i>	Willow Bottlebrush	10m	5m	100L	G, S, OS
Sy-ac	Hedge	<i>Syzygium Aussie Compact</i>	Lilly Pilly	5m	3m	300mm	G
Ca-ci	Hedge	<i>Callistemon citrinus</i>	Crimson Bottlebrush	3m	2m	300mm	S, G, OS
Do-ex	Feature	<i>Doryanthes excelsa</i>	Gynea Lily	4m	3m	300mm	G
Ac-te	Shrub	<i>Acacia terminalis</i>	Sunshine Wattle	2m	2m	300mm	G
Ca-te	Shrub	<i>Calytrix tetragona</i>	Common Fringe-myrtle	2m	1.5m	300mm	G
Ba-er	Shrub	<i>Banksia ericifolia subsp. Ericifolia</i>	Heath-leaved Banksia	3m	2.5m	300mm	G, OS
Di-re	Groundcover	<i>Dichondra repens</i>	Kidney Weed	0.15m	1m	200mm	G, OS
Gr-br	Groundcover	<i>Grevillea 'Bronze Rambler'</i>	Grevillea	0.5m	5m	200mm	G
Lo-ta	Groundcover	<i>Lomandra 'Tanika'</i>	Tanika	0.6m	0.6m	200mm	G

## PLANTING CHARACTER



## MATERIAL PALETTE



# TYPICAL 3B & 3B+1BS (LOT H)



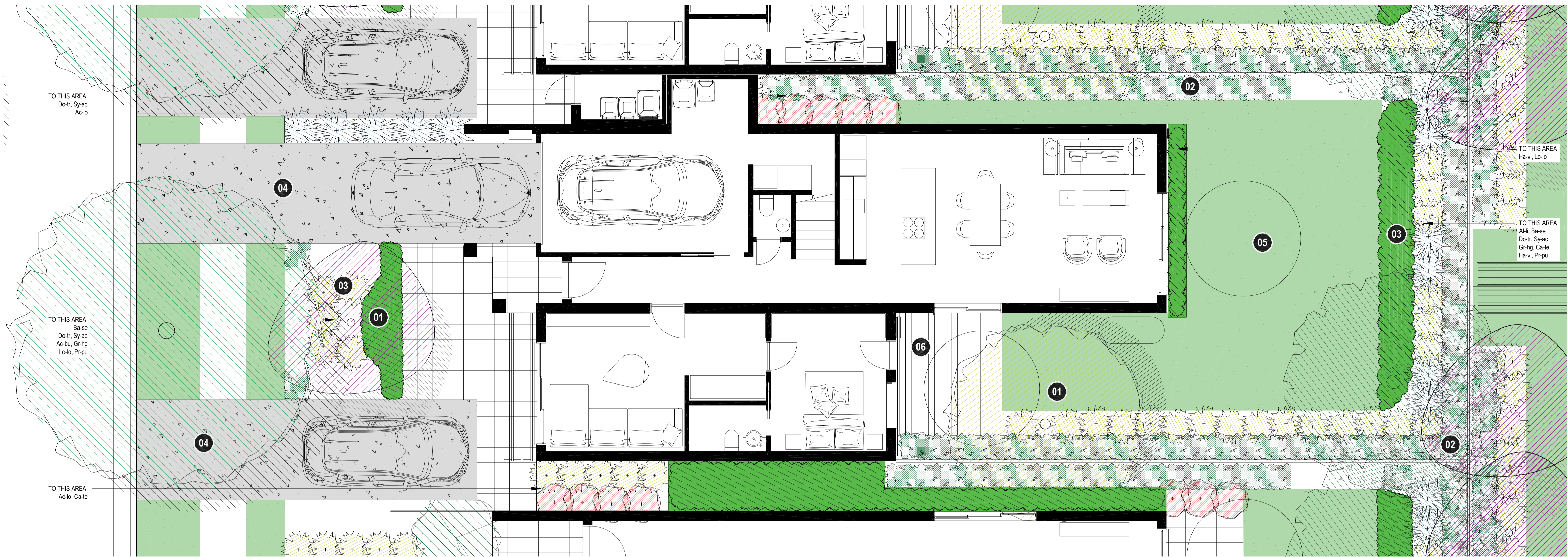
### LEGEND

SITE BOUNDARY	PAVING TYPE 3 - 20-60mm GARDEN PEBBLES	FENCE TYPE 1 - 1800mm H COLOURBOND FENCE TO MANUFACTURER SPEC. FINISH: POWDER-COATED. COLOUR: MONUMENT	PROPOSED FEATURE TREES	PROPOSED TREES	GRC POT - 800 MEDIUM CYLINDER
PAVING TYPE 1 - EXPOSED AGGREGATE CONCRETE	PAVING TYPE 4 - 600 x 600 x 45mm CONCRETE PAVER	FENCE TYPE 2 - CONCRETE SLEEPER RETAINING WALL TO CIVIL LEVEL. FINISH: WOOD-GRAIN. COLOUR: CHARCOAL	PROPOSED FEATURE SHRUBS	PROPOSED HEDGING	ACCESS GATE
PAVING TYPE 2 - TILE ON SLAB	TURF	100 X 3mm ALUMINUM STEEL GARDEN EDGING. FINISH: MILLED	PROPOSED GROUNDCOVERS	PROPOSED SHRUBS	

project: The Yards, Bomaderry  
 client: SCCH  
 date: 2024 10 22  
 revision: B  
 drawn: RA  
 checked: AL

**TaylorBrammer**  
 TAYLOR BRAMMER LANDSCAPE ARCHITECTS PTY LTD  
 SYDNEY STUDIO  
 218 Oxford Street, Woolloomooloo, NSW, 2025  
 Copyright © Taylor Brammer Landscape Architects Pty Ltd. ABN 61 588 724 988

# LA401



## PLANTING SCHEDULE

### TYPICAL 3B ATTACHED HOUSING (LOT D)

ID	BOTANICAL NAME	COMMON NAME	HEIGHT (m)	WIDTH (m)	SIZE	LANDSCAPE SUITABILITY
Ca-sa	Tree	<i>Callistemon salignus</i>	10m	5m	100L	G, S, OS
Pi-ch	Tree	<i>Pistacia chinensis</i>	8m	6m	75L	OS, R, G (large) ,S
Ac-sm	Hedge	<i>Acmena smithii 'Minor'</i>	3m	1.5m	300mm	G
Ph-gr	Hedge	<i>Photinia glabra 'Rubens'</i>	3m	3m	300mm	G
Gr-gr	Feature	<i>Grevillea 'Robyn Gordon'</i>	1.5m	1.8m	300mm	G, S, OS
Ba-ru	Shrub	<i>Bauera rubioides</i>	2m	1.5m	300mm	G
Ga-gm	Shrub	<i>Gardenia angusta 'Golden Magic'</i>	1m	0.5m	300mm	G
St-re	Shrub	<i>Strelitzia reginae</i>	1.2m	1.2m	300mm	G
Di-re	Groundcover	<i>Dichondra repens</i>	0.15m	1m	200mm	G
Li-ma	Groundcover	<i>Liriope muscari</i>	0.6m	0.5m	200mm	G
Lo-ta	Groundcover	<i>Lomandra 'Tanika'</i>	0.6m	0.6m	200mm	G

## MATERIAL PALETTE



Exposed aggregate concrete    Tile on slab    Timber Decking

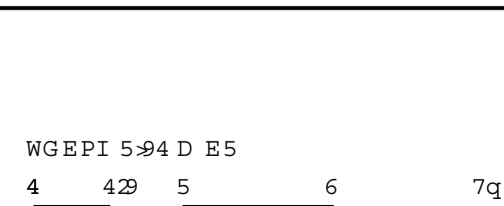
## PLANTING CHARACTER



## DESIGN NOTES

- 01 FEATURE TREE TO FRAME VIEW
- 02 SCREEN HEDGE TO BOUNDARY
- 03 LAYERED PLANTING TO PROVIDE AMENITY AND SCREENING
- 04 DRIVEWAY
- 05 OPEN LAWN AREA
- 06 DECKING TO OPEN SPACE AREA

# TYPICAL 3B & 3B+1BS (LOT E)



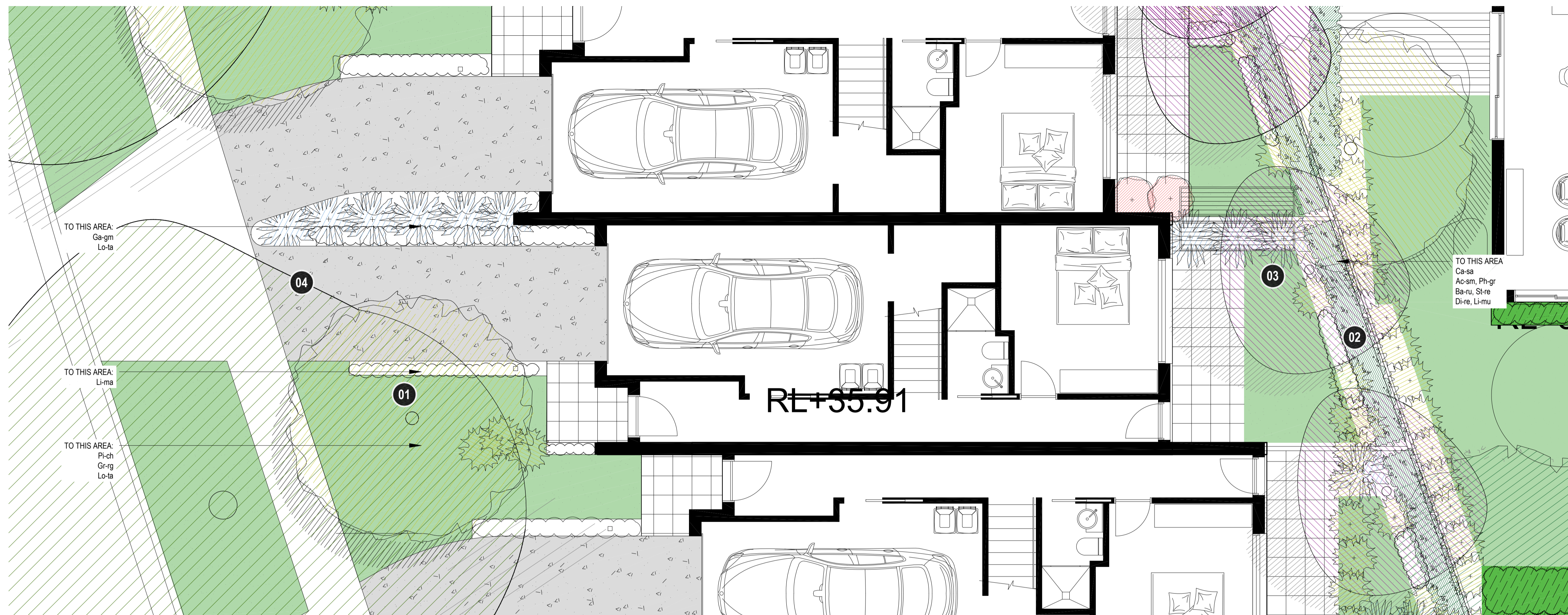
### LEGEND

SITE BOUNDARY	PAVING TYPE 3 - 20-60mm GARDEN PEBBLES	FENCE TYPE 1 - 1800mm H COLOURBOND FENCE TO MANUFACTURER SPEC. FINISH: POWDER-COATED. COLOUR: MONUMENT	PROPOSED FEATURE TREES	PROPOSED TREES	GRC POT - 800 MEDIUM CYLINDER
PAVING TYPE 1 - EXPOSED AGGREGATE CONCRETE	PAVING TYPE 4 - 600 x 600 x 45mm CONCRETE PAVER	FENCE TYPE 2 - CONCRETE SLEEPER RETAINING WALL TO CIVIL LEVEL. FINISH: WOOD-GRAIN. COLOUR: CHARCOAL.	PROPOSED FEATURE SHRUBS	PROPOSED HEDGING	ACCESS GATE
PAVING TYPE 2 - TILE ON SLAB	TURF	100 x 30mm ALUMINUM STEEL GARDEN EDGING. FINISH: MILLED	PROPOSED GROUNDCOVERS	PROPOSED SHRUBS	

**project:** The Yards, Bomaderry  
**client:** SCCH  
**date:** 2024 10 22  
**revision:** B  
**drawn:** RA  
**checked:** AL

**TaylorBrammer**  
 TAYLOR BRAMMER LANDSCAPE ARCHITECTS PTY LTD  
 SYDNEY STUDIO  
218 Oxford Street Woodlawn, NSW, 2025 E sydney@taylorbrammer.com.au T 61 2 9387 8855  
 Copyright © Taylor Brammer Landscape Architects Pty Ltd ABLN 158 724 988

# LA402



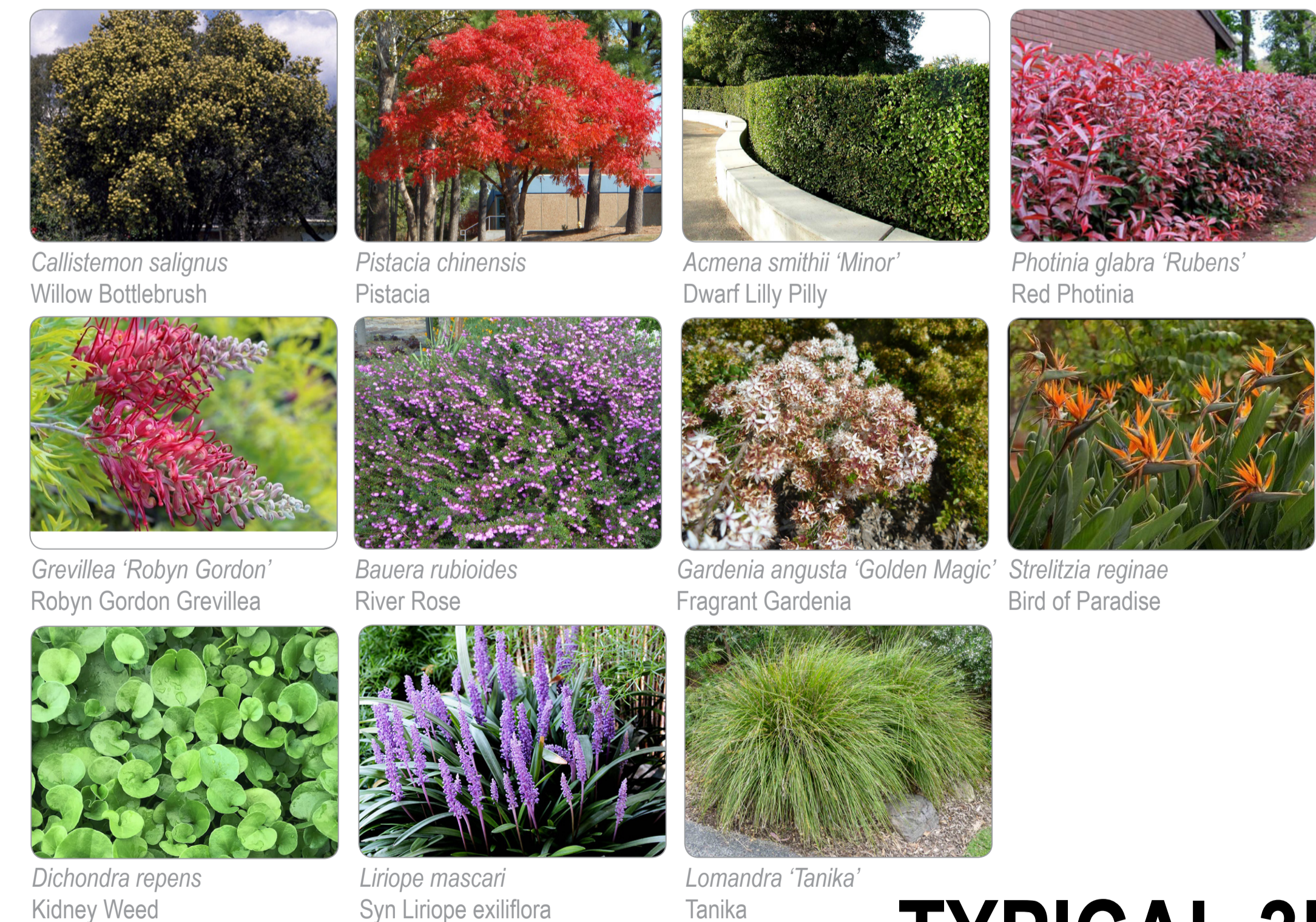
### DESIGN NOTES

- 01 FEATURE TREE TO FRAME VIEW
- 02 SCREEN HEDGE TO BOUNDARY
- 03 LAYERED PLANTING TO PROVIDE AMENITY AND SCREENING
- 04 DRIVEWAY

### PLANTING SCHEDULE

TYPICAL 3B ATTACHED HOUSING (LOT D)							
ID		BOTANICAL NAME	COMMON NAME	HEIGHT (m)	WIDTH (m)	SIZE	LANDSCAPE SUITABILITY
Ca-sa	Tree	<i>Callistemon salignus</i>	Willow Bottlebrush	10m	5m	100L	G, S, OS
Pi-ch	Tree	<i>Pistacia chinensis</i>	Pistacia	8m	6m	75L	OS, R, G (large), S
Ac-sm	Hedge	<i>Acmena smithii 'Minor'</i>	Dwarf Lilly Pilly	3m	1.5m	300mm	G
Ph-gr	Hedge	<i>Photinia glabra 'Rubens'</i>	Red Photinia	3m	3m	300mm	G
Gr-rg	Feature	<i>Grevillea 'Robyn Gordon'</i>	Robyn Gordon Grevillea	1.5m	1.8m	300mm	G, S, OS
Ba-ru	Shrub	<i>Bauera rubioides</i>	River Rose	2m	1.5m	300mm	G
Ga-gm	Shrub	<i>Gardenia angusta 'Golden Magic'</i>	Fragrant Gardenia	1m	0.5m	300mm	G
St-re	Shrub	<i>Strelitzia reginae</i>	Bird of Paradise	1.2m	1.2m	300mm	G
Di-re	Groundcover	<i>Dichondra repens</i>	Kidney Weed	0.15m	1m	200mm	G
Li-ma	Groundcover	<i>Liriope muscari</i>	Syn Liriope Exilliflora	0.6m	0.5m	200mm	G
Lo-ta	Groundcover	<i>Lomandra 'Tanika'</i>	Tanika	0.6m	0.6m	200mm	G

### PLANTING CHARACTER

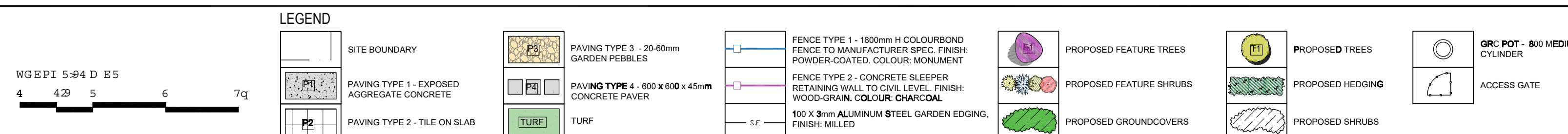


### MATERIAL PALETTE



Exposed aggregate concrete Tile on slab

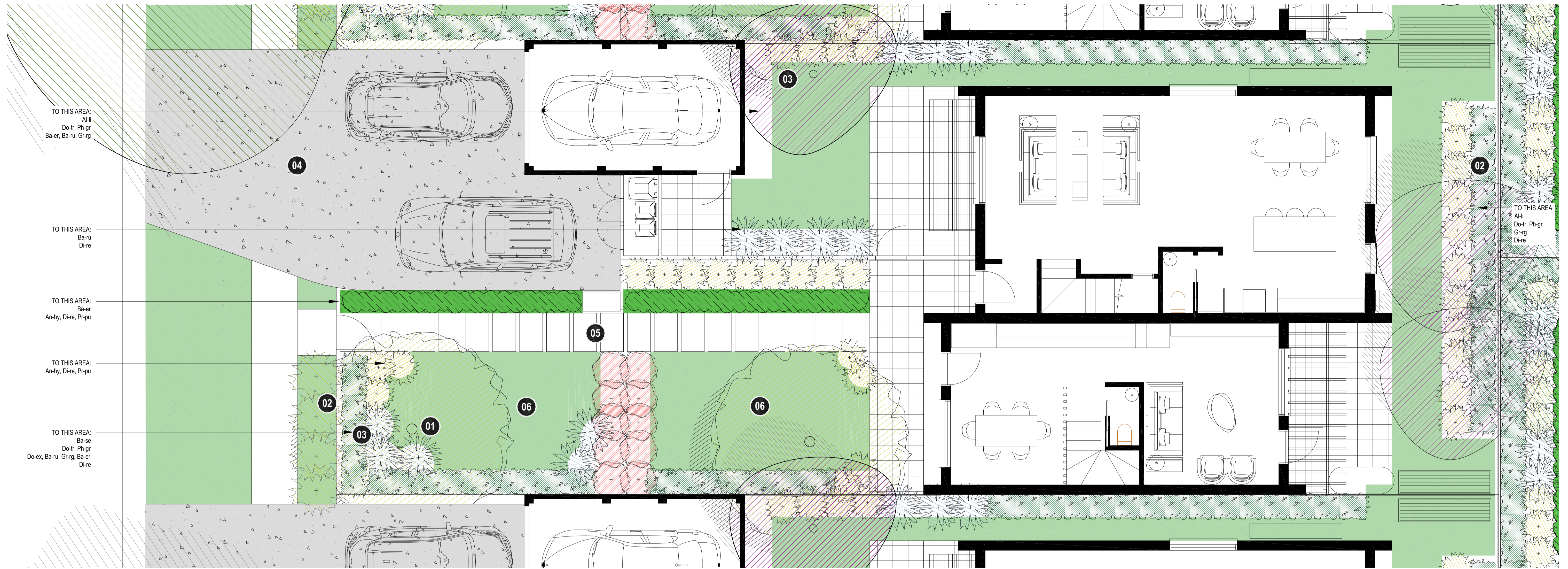
# TYPICAL 3B (LOT D)



project: The Yards, Bomaderry  
 client: SCCH  
 date: 2024 10 22  
 revision: B  
 drawn: RA  
 checked: AL

**TaylorBrammer**  
 SYDNEY STUDIO  
 TAYLOR BRAMMER LANDSCAPE ARCHITECTS PTY LTD  
 218 Oxford Street Woodlawn, NSW, 2025 E sydney@taylorbrammer.com.au T 61 2 9387 8855  
Copyright © Taylor Brammer Landscape Architects Pty Ltd ABN 119 124 988

# LA403



**PLANTING SCHEDULE**

**TYPICAL 3B & 1B + S ATTACHED HOUSING (LOT C)**

ID	BOTANICAL NAME	COMMON NAME	HEIGHT (m)	WIDTH (m)	SIZE	LANDSCAPE SUITABILITY
Al-li	Tree	<i>Allocasuarina littoralis</i>	8m	4m	75L	S, G, OS
Ba-se	Tree	<i>Banksia serrata</i>	15m	4m	100L	S, G, OS
Do-tr	Hedge	<i>Dodonaea triquetra</i>	3m	2m	300mm	G
Ph-gr	Hedge	<i>Photinia glabra 'Rubens'</i>	3m	3m	300mm	G
Do-ex	Feature	<i>Doryanthes excelsa</i>	4m	3m	300mm	G
Ba-er	Shrub	<i>Banksia ericifolia subsp. Ericifolia</i>	3m	2.5m	300mm	G, OS
Ba-ru	Shrub	<i>Bauera rubioides</i>	2m	1.5m	300mm	G
Gr-rg	Shrub	<i>Grevillea 'Robyn Gordon'</i>	1.5m	1.8m	300mm	G, S, OS
An-hy	Groundcover	<i>Anigozanthos hybrids</i>	0.4m	0.2m	200mm	G
Di-re	Groundcover	<i>Dichondra repens</i>	0.15m	1m	200mm	G
Pr-pu	Groundcover	<i>Pratia purpurascens</i>	0.3m	1m	200mm	G

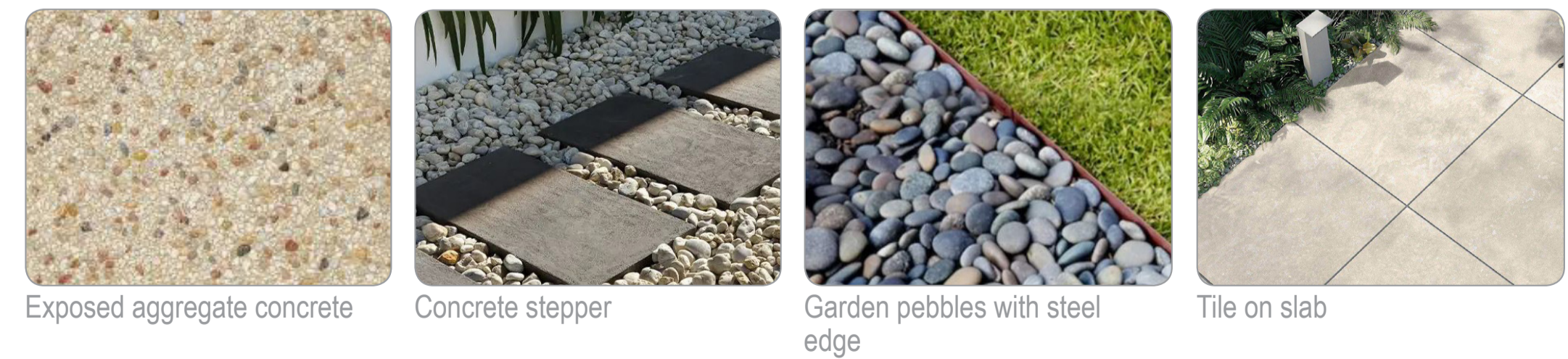
**PLANTING CHARACTER**



**DESIGN NOTES**

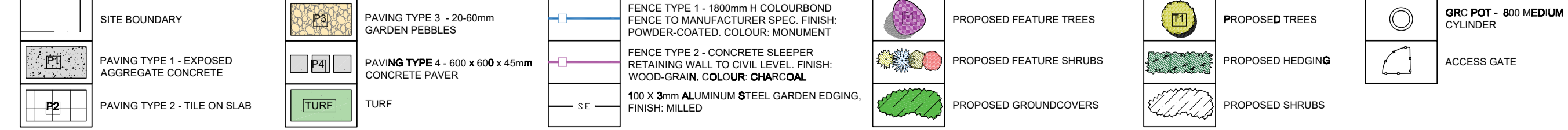
- 01 FEATURE TREE TO FRAME VIEW
- 02 SCREEN HEDGE TO BOUNDARY
- 03 LAYERED PLANTING TO PROVIDE AMENITY AND SCREENING
- 04 DRIVEWAY
- 05 STEPPERS IN DECOMPOSED GRANITE LEADING TO STREET
- 06 OPEN LAWN AREA

**MATERIAL PALETTE**



**TYPICAL 3B & 1B+S (LOT C)**

**LEGEND**



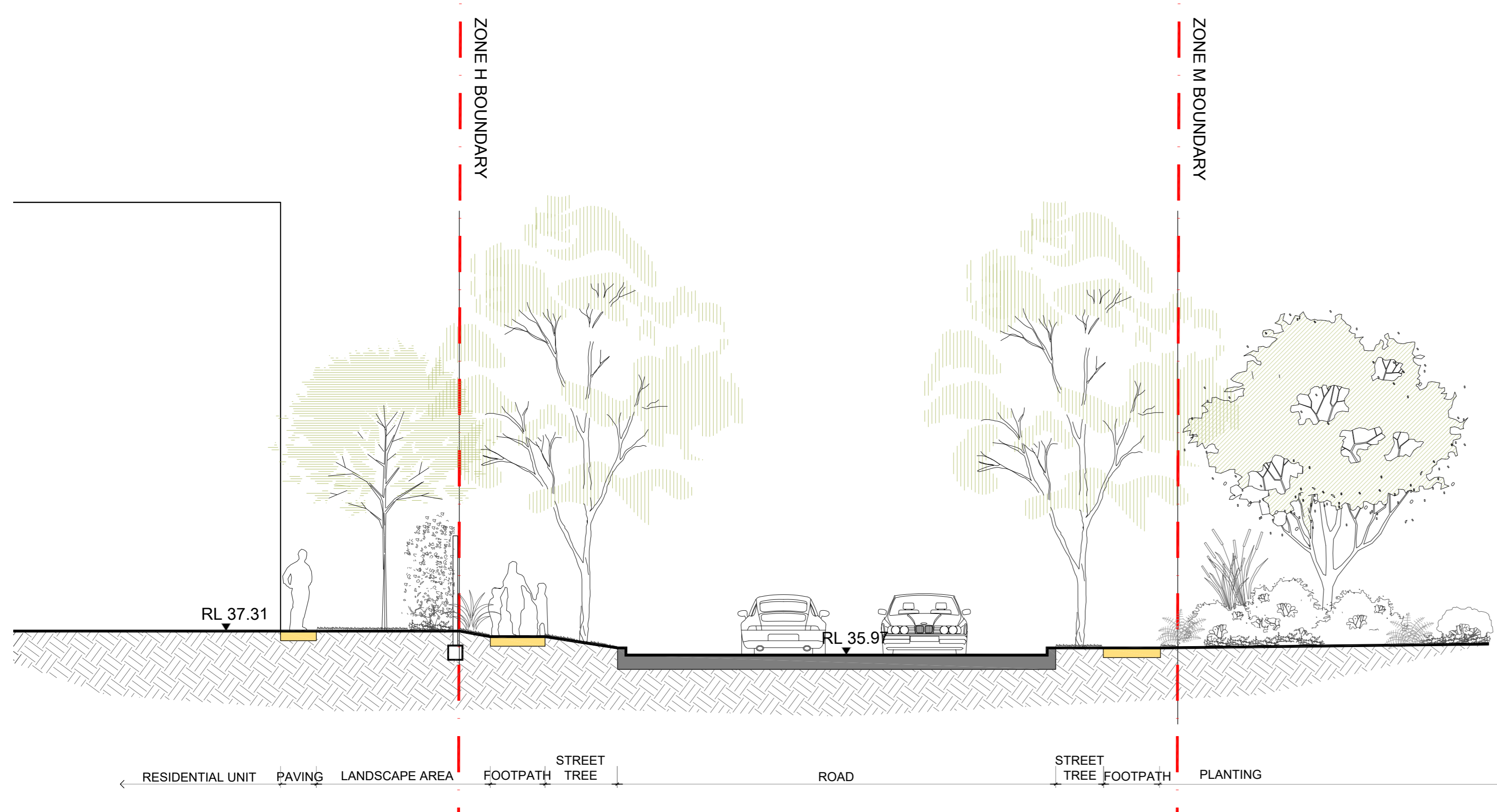
project: The Yards, Bomaderry  
 client: SCCCH  
 date: 2024 10 22  
 revision: B  
 drawn: RA  
 checked: AL

**TaylorBrammer**  
 TAYLOR BRAMMER LANDSCAPE ARCHITECTS PTY LTD  
 SYDNEY STUDIO  
 218 Colson Street, Westmead, NSW, 2009  
 Copyright © Taylor Brammer Landscape Architects Pty Ltd

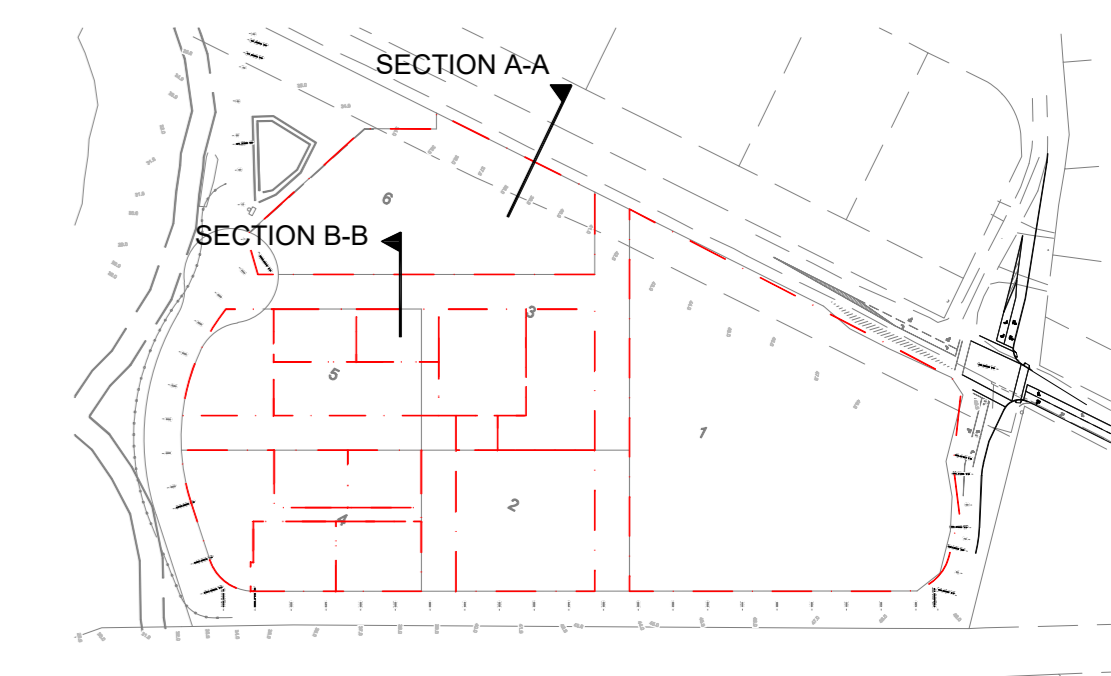
**LA404**



01 SECTION A-A  
SCALE 1:100



02 SECTION B-B  
SCALE 1:100



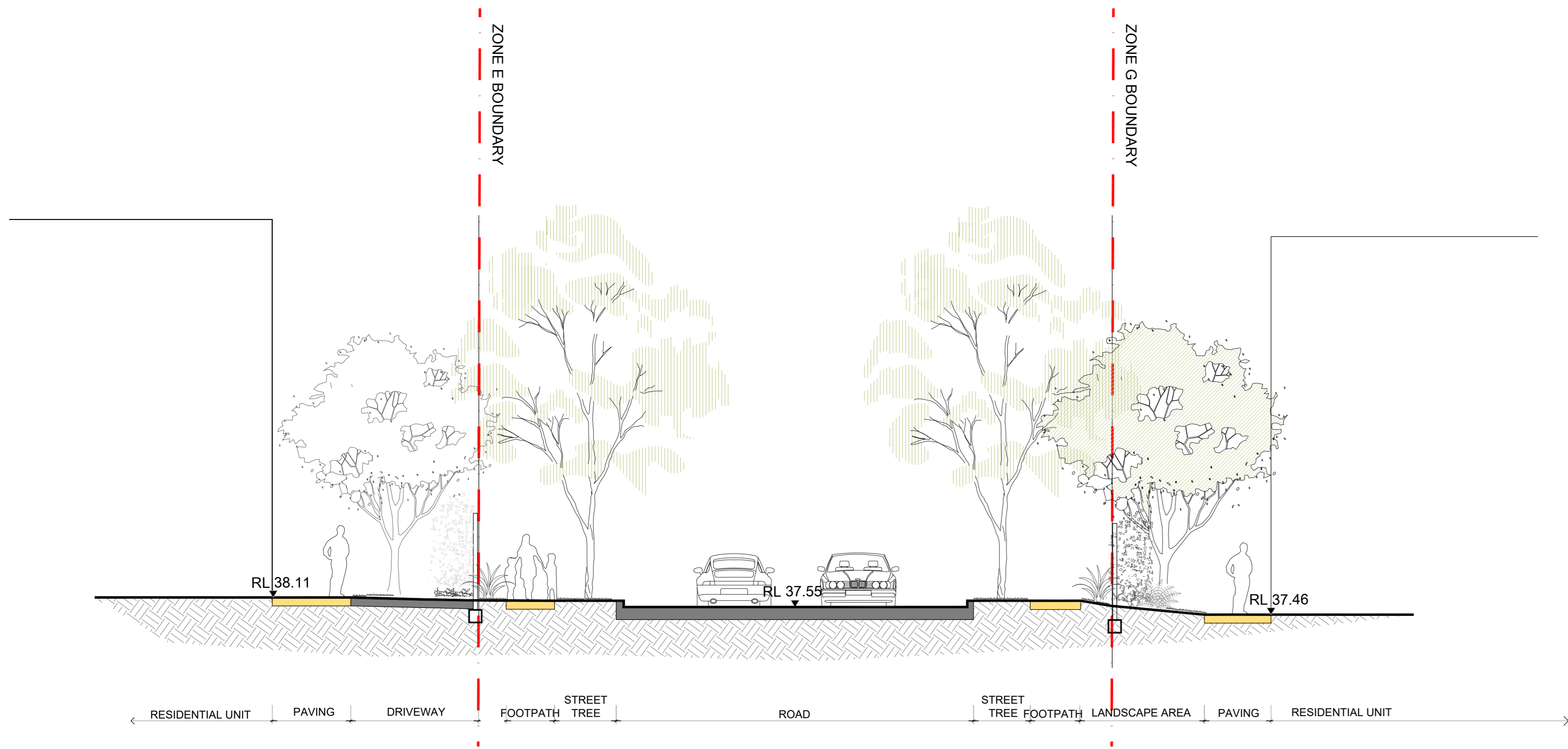
KEY PLAN

# LANDSCAPE SECTIONS

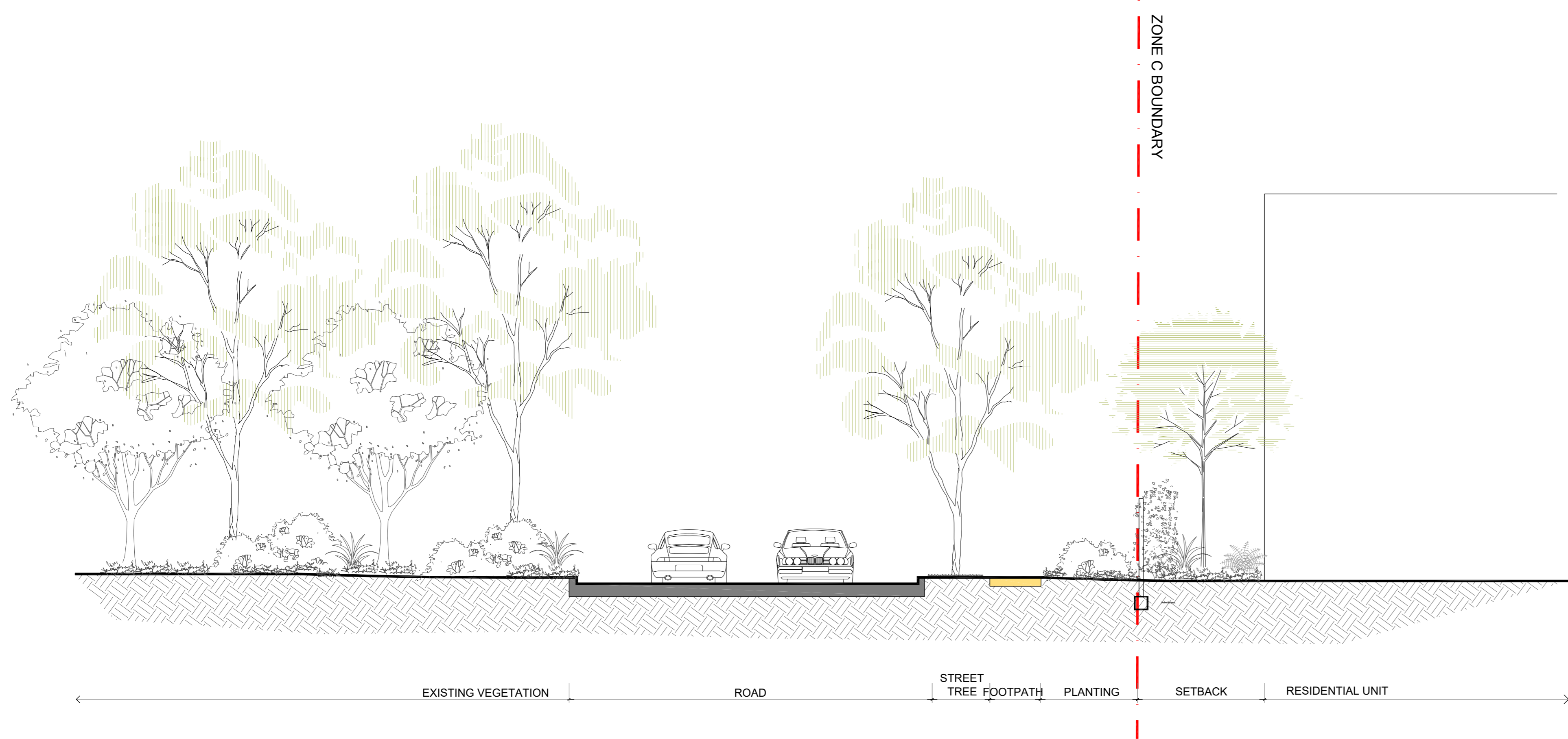
project: The Yards, Bomaderry  
 client: SCCH  
 date: 2024 10 22  
 revision: B  
 drawn: RA  
 checked: AL

**TaylorBrammer**  
 TAYLOR BRAMMER LANDSCAPE ARCHITECTS PTY LTD  
 SYDNEY STUDIO  
 218 Oxford Street Woodlark, NSW, 2025 E: sydney@taylorbrammer.com.au T: 61 2 9387 8855  
 Copyright © Taylor Brammer Landscape Architects Pty Ltd. All rights reserved.

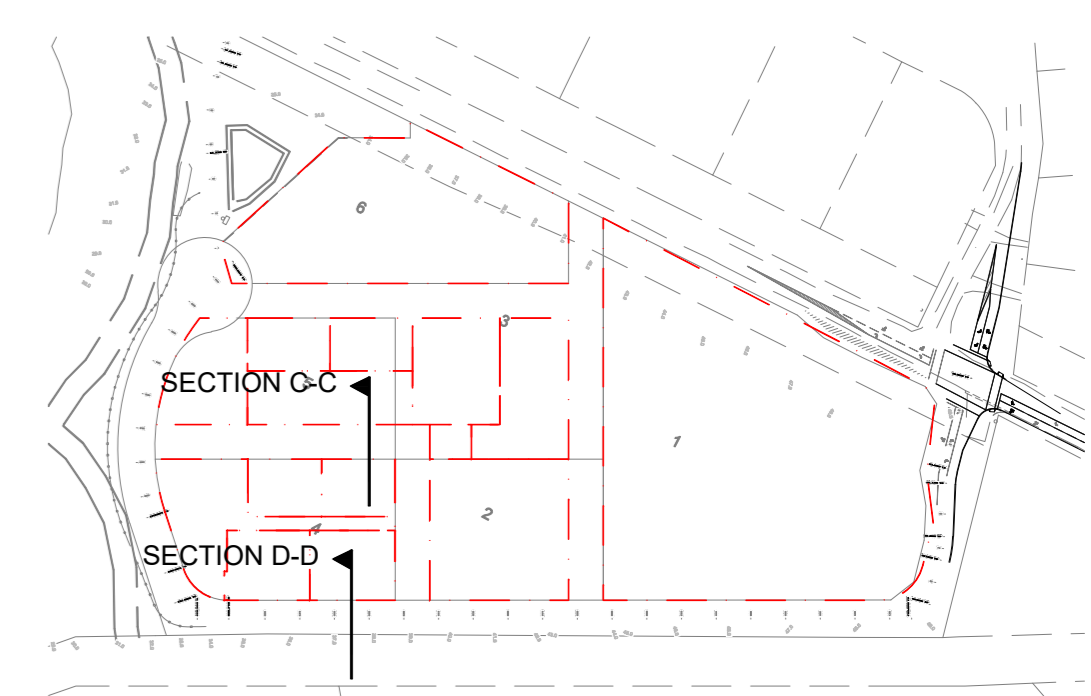
# LA500



01 SECTION C-C  
SCALE 1:75



02 SECTION D-D  
SCALE 1:75



KEY PLAN

# LANDSCAPE SECTIONS

project: The Yards, Bomaderry  
 client: SCCH  
 date: 2024 10 22  
 revision: B  
 drawn: RA  
 checked: AL

**TaylorBrammer**  
 TAYLOR BRAMMER LANDSCAPE ARCHITECTS PTY LTD  
 STONEY STUDIO  
 218 Oxford Street Woolahra, NSW, 2025 E: sydney@taylorbrammer.com.au T: 61 2 9387 8855  
 Copyright © Taylor Brammer Landscape Architects Pty Ltd. All rights reserved.

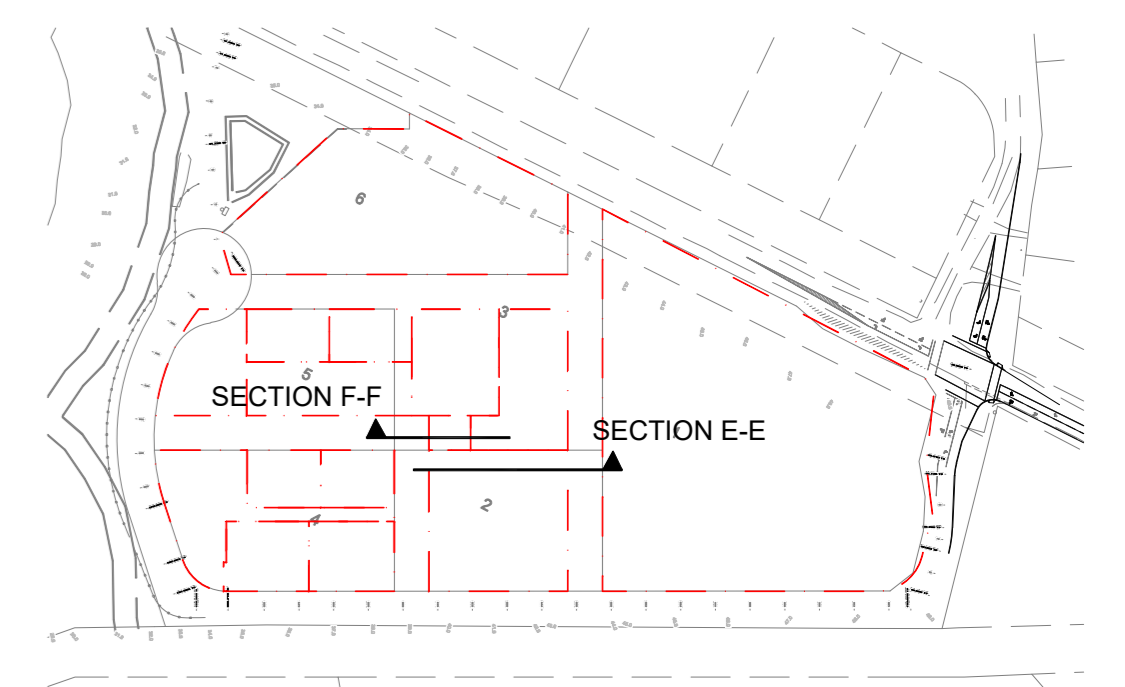
# LA501



01 SECTION E-E  
SCALE 1:75



02 SECTION F-F  
SCALE 1:75

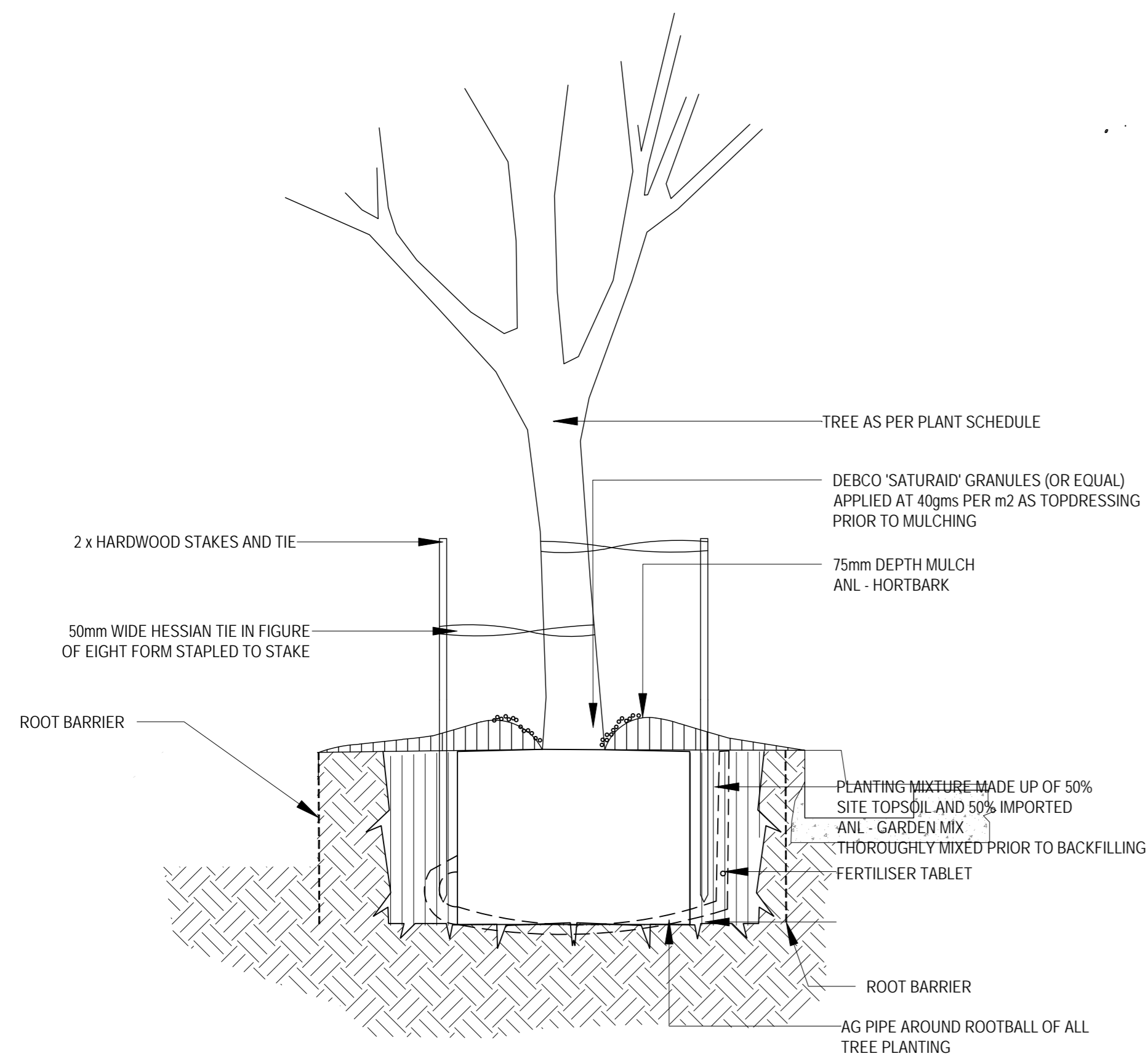


KEY PLAN  
**LANDSCAPE SECTIONS**

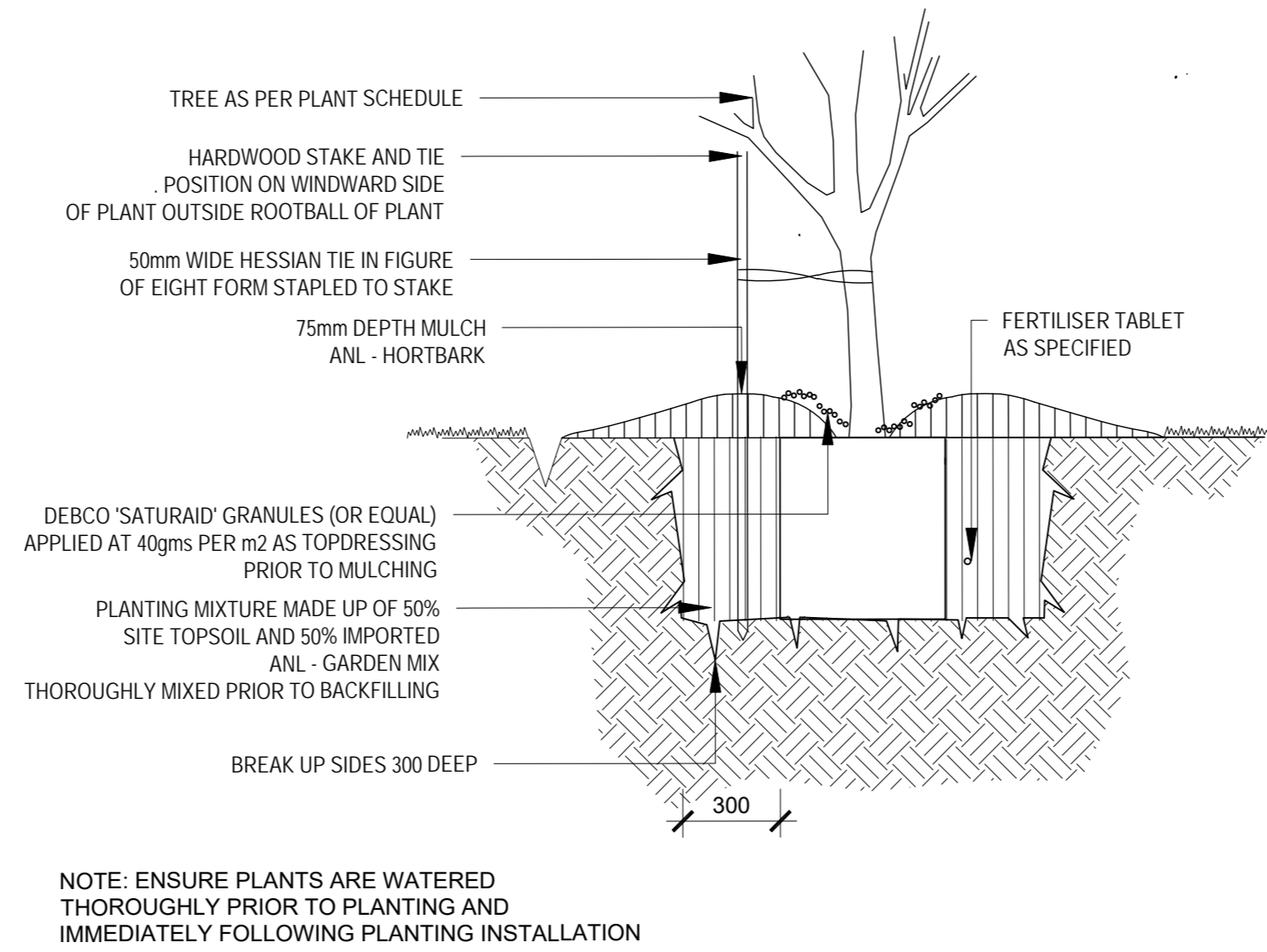
project: The Yards, Bomaderry  
 client: SCCH  
 date: 2024 10 22  
 revision: B  
 drawn: RA  
 checked: AL

**TaylorBrammer**  
 TAYLOR BRAMMER LANDSCAPE ARCHITECTS PTY LTD  
 SYDNEY STUDIO  
 218 Oxford Street Woodlark, NSW, 2025 E: sydney@taylorbrammer.com.au T: 61 2 9397 8855  
 Copyright © Taylor Brammer Landscape Architects Pty Ltd. All rights reserved.

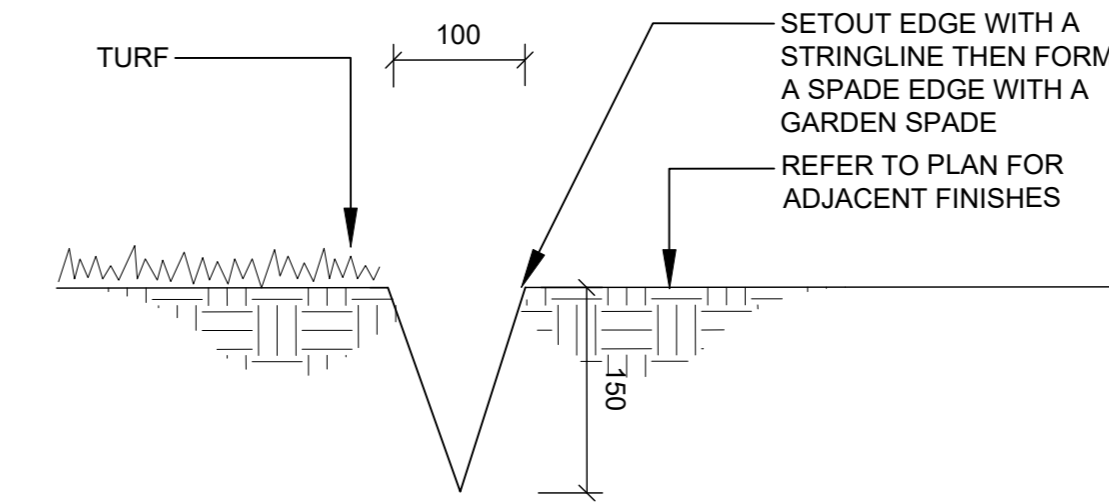
**LA502**



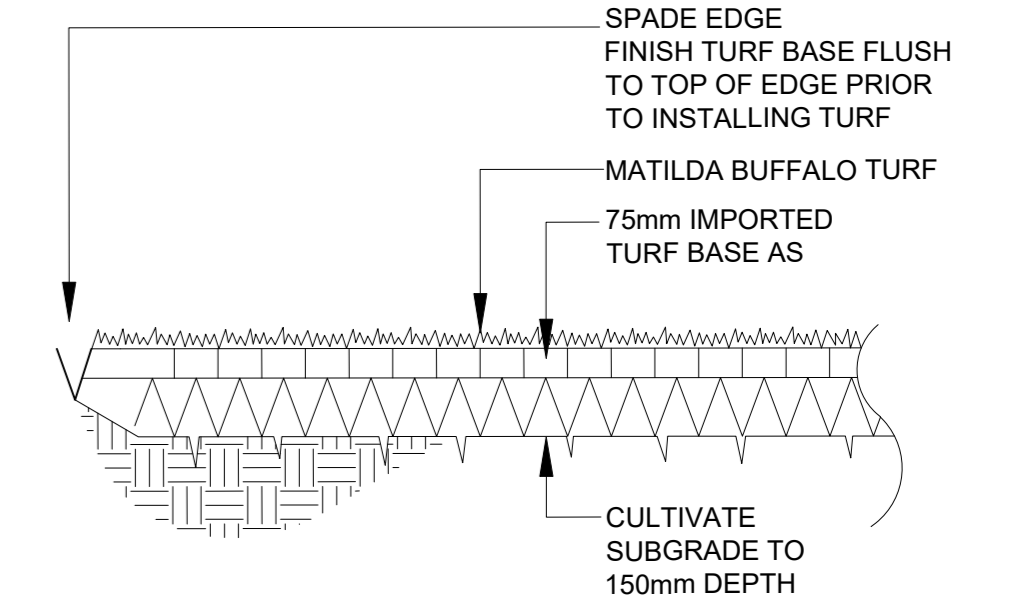
01 TREE PLANTING IN VERGE TYPICAL DETAIL SECTION  
SECTION 1:20



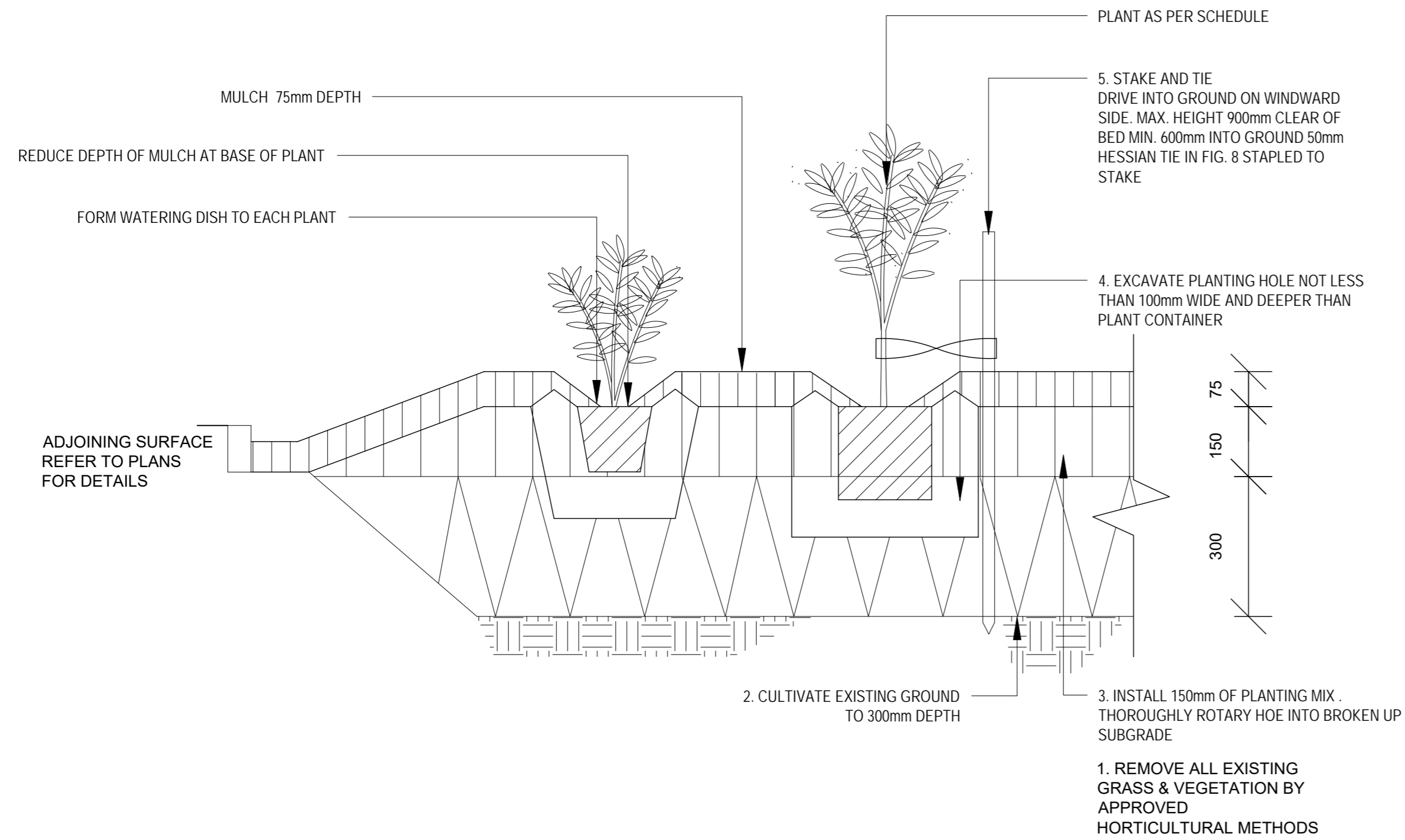
02 TREE PLANTING DETAIL  
SECTION 1:20



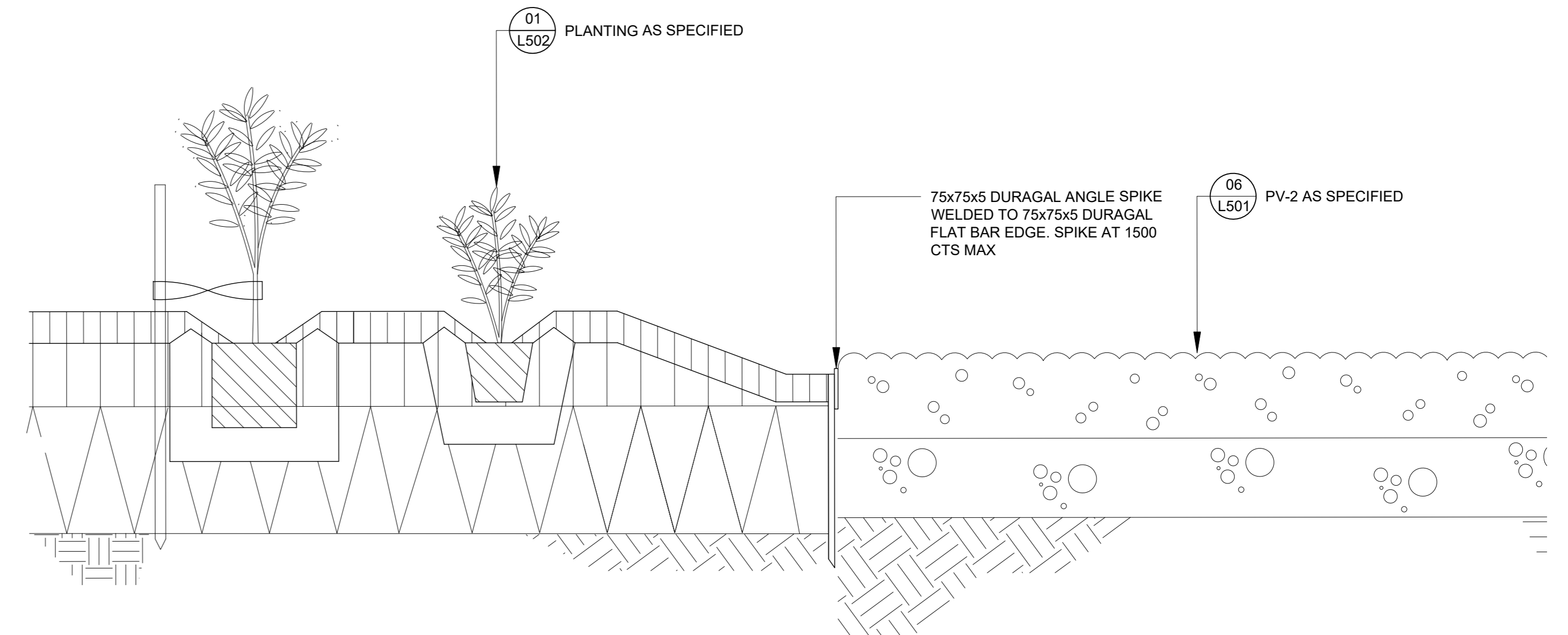
03 SPADE EDGE DETAIL SECTION  
SECTION 1:5



04 TURF ON GRADE DETAIL SECTION  
SECTION 1:20



05 IRRIGATED MASS PLANTING ON GRADE  
SECTION 1:10



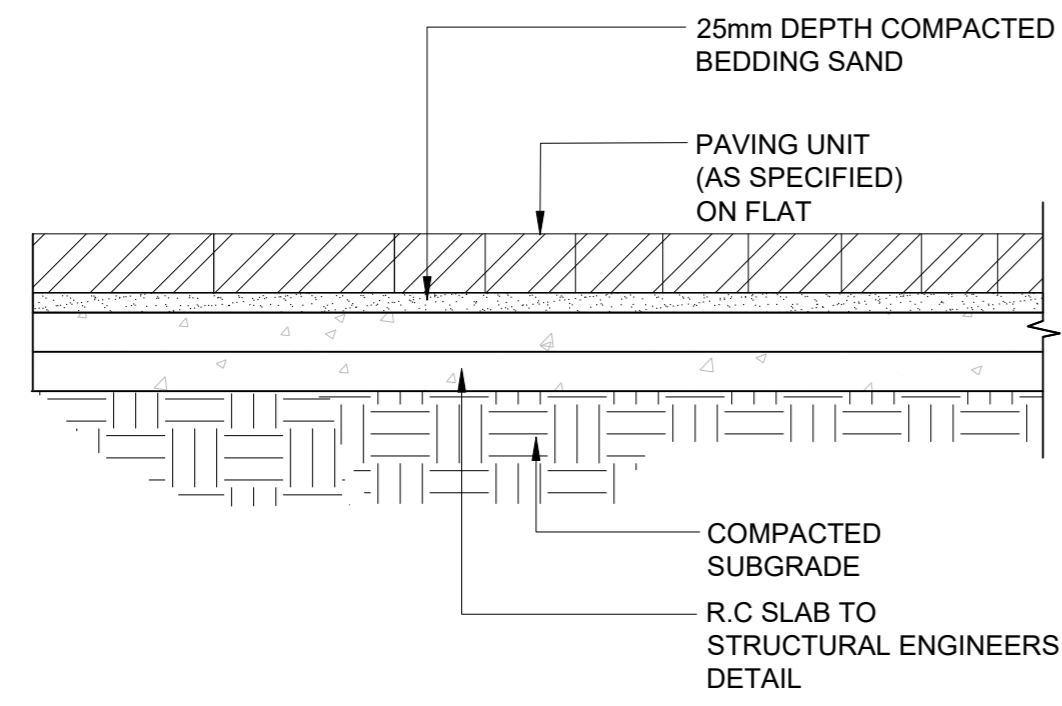
06 STEEL EDGE DETAIL  
SECTION 1:10

# LANDSCAPE DETAILS

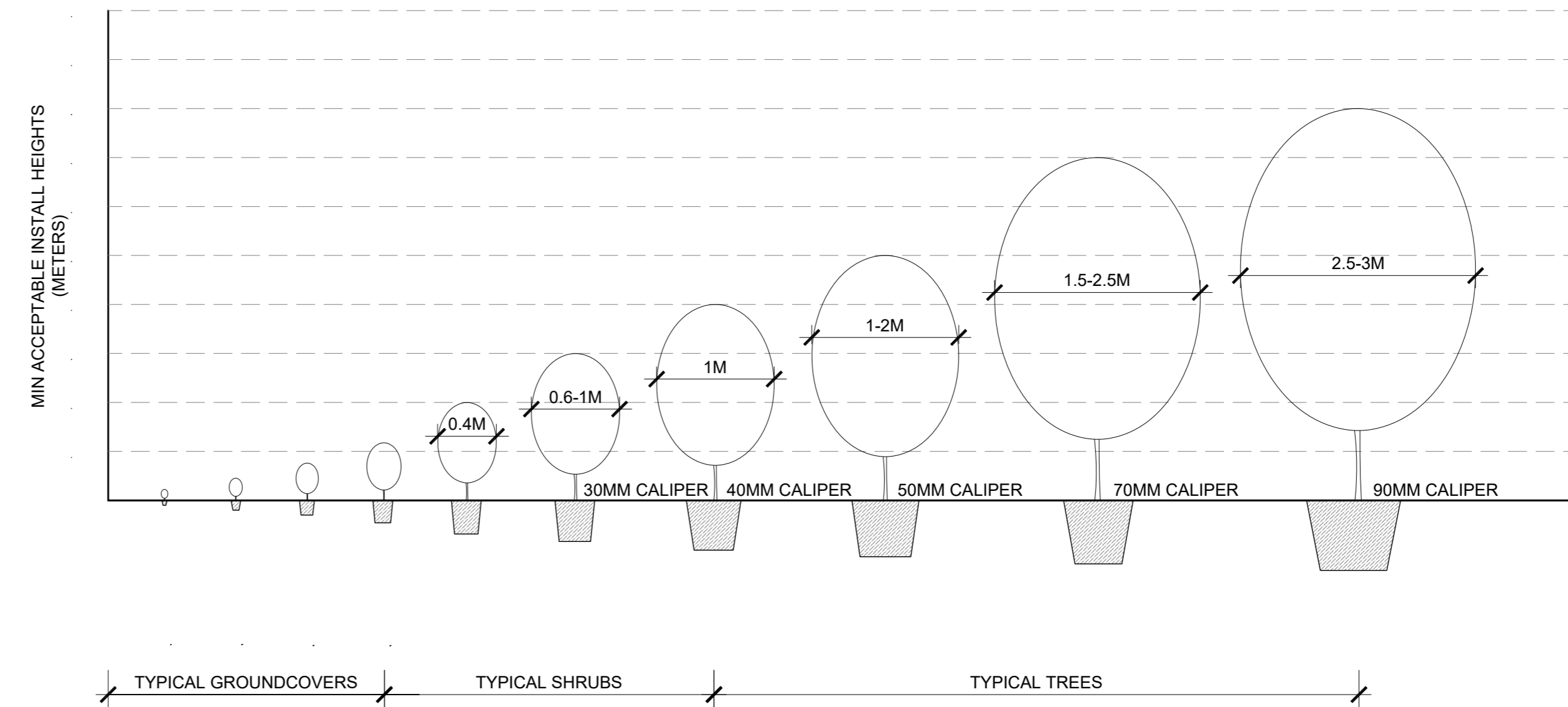
project: The Yards, Bomaderry  
client: SCCH  
date: 2024 10 22  
revision: B  
drawn: RA  
checked: AL

**TaylorBrammer**  
TAYLOR BRAMMER LANDSCAPE ARCHITECTS PTY LTD  
STONEY STUDIO  
218 Oxford Street Woolahra, NSW, 2025 E: sydney@taylorbrammer.com.au T: 61 2 9387 8855  
Copyright © Taylor Brammer Landscape Architects Pty Ltd. All rights reserved. 4/24 01 192 121 000

LA600



01 TYPICAL PAVING DETAIL  
SECTION 1:10



GENERAL TREE SUPPLY AND QUALITY:  
FOLLOW THE GUIDANCE GIVEN IN NATSPEC GUIDE: SPECIFYING TREES  
- A GUIDE TO ASSESSMENT OF TREE QUALITY (CLARK R. 2003).

02 NEW PLANTING MINIMUM SIZES  
SECTION 1:50

# LANDSCAPE DETAILS

project: The Yards, Bomaderry  
client: SCCH  
date: 2024 10 22  
revision: B  
drawn: RA  
checked: AL

**TaylorBrammer**  
TAYLOR BRAMMER LANDSCAPE ARCHITECTS PTY LTD  
STONEY STUDIO  
218 Oxford Street Woolahra, NSW, 2025 E: sydney@taylorbrammer.com.au T: 61 2 9387 8855  
Copyright © Taylor Brammer Landscape Architects Pty Ltd. All rights reserved.

LA601

# PLANTING PROCUREMENT SPECIFICATION

## 1 GENERAL

### 1.1 Responsibilities

#### General

Requirement: Provide plants as documented.

### 1.2 Standard

#### General

Tree stock supply: Conform to the recommendations of AS 2303.

### 1.3 Interpretation

#### Definitions

General: For the purposes of this worksection the definitions given in AS 2303 and the following below apply:

- Destructive inspection (of trees): The washing away of all soil from a rootball to allow inspection of rootball development.
- Investigative inspection: Any method of root inspection that involves the washing away of all or portions of the soil from the rootball to expose a section or all the roots.
- Known history: Supplier documentation, demonstrating and enabling verification that the product was grown by essentially the same processes and under essentially -- the same system of control.
- Large tree: A tree grown in a container not less than 20 L or ex-ground with a minimum rootball diameter of 400 mm.
- Partial inspection (of trees): A method of exposing a section of a root system to enable inspection of root development by washing the soil away in a wedge-shaped section from the stem to the extremity of the rootball. This soil can be gently replaced so the tree is not damaged.
- Shrub: A woody perennial plant smaller than a tree, usually having permanent stems branching from or near the ground.
- Small trees: Tree or shrub grown in a container less than 20 L (other than tubes or plant cells) or ex-ground trees of size index less than 35.

### 1.4 Submissions

#### Photographic examples

Requirement: Submit photographic examples as follows:

- 100, 200, 400 L plant species.
- Specimen plant species.

Program: Within fourteen (14) days of the date of contract.

Clarity: Sufficient to be able to ascertain the species, size and quality of a single specimen of the subject plant.

Identification: Provide photographs as follows:

- In colour.
- With a clearly identifiable scale reference located in the same plane as the plant stem or trunk.
- Labelled with plant species name.

## 2 PRODUCTS

### 2.1 Plants - General assessment criteria

#### General

Requirement: Supply trees to AS 2303 and with the following properties:

- Stress: Free from stress resulting from inadequate watering, excessive shade or excessive sunlight experienced at any time during their development.
- Site environment: Grown and hardened off to suit anticipated site conditions at the time of delivery.
- Native species with a history of attack by native pests: Restrict plant supply to those with evidence of previous attack to less than 15% of the foliage and make -- sure of the absence of actively feeding insects.

#### Labelling

General: To AS 2303 clause 2.2.1.

Label type: To withstand transit without erasure or misplacement.

### 2.2 Above-ground assessment criteria - trees

#### General

Requirement: Supply trees to AS 2303 clause 2.2 and with the following properties:

- Clean stem height: < 40% of total tree height.
- Trunk position: Variation in distance from the centre of the trunk to the extremity of the rootball: < 10%.
- Tree stock in containers less than 45 L: Self-supporting at dispatch.
- Pest and diseases: No evidence of active pests and diseases.
- Indication of north: Trees in containers greater than 100 L or of Size Index greater than 140: . Label the northerly aspect during growth in the nursery and maintain during transit.

### 2.3 Below-ground assessment criteria - trees

#### General

Requirement: Supply trees to AS 2303 clause 2.3 and with the following properties:

- Rootball occupancy: Soil retention: . On shaking or handling the unsupported rootball, at least 90% of the soil volume is to remain intact.
- Rootball diameter: . Containers less than or equal to 45 L and ex-ground stock: ≥ to rootball depth. . Bare-rooted tree stock with size index less than or equal to 57: ≥ 10 x calliper
- Pest, diseases and weeds: No evidence of active pests, diseases and weeds.

### 2.4 Below-ground qualities - shrubs

#### Root system

Requirement: Supply plant material with a root system as follows:

- Well-proportioned in relation to the size of the plant material.
- Conducive to successful transplantation.
- Free of any indication of having been restricted or damaged.

Root inspection: If inspection is by the removal of soil test such as destructive inspection, sample as follows:

- For > 100 samples: Inspect 1%.
- For < 100 samples: Inspect 1 sample.

Sample plants: Replace plants used in inspection.

Rejection: Do not provide root bound stock.

## 3 EXECUTION

### 3.1 Pre-completion tests

#### Production tests

Sampling: Select sample trees, of known history, at evenly distributed intervals within each batch.

Above ground tree inspection:

- Frequency: Inspect trees at dispatch.
- Sampling strategy: To AS 2303 Appendix A Table A1.
- Inspector: Supplier.
- Investigative tree inspection:
  - Frequency: Inspect trees before dispatch.
  - Inspector: Qualified person authorised by the contract administrator.
  - Destructive inspection: Use for trees with rootballs/containers not more than 200 mm.
  - Allowance: Allow for sample trees in addition to quantity ordered.
  - Partial inspection: Use for trees with rootballs/containers more than 200 mm.

### 3.2 Warranties

#### True-to-species

Parties: Supplier(s) to the principal.

Form: All the plants supplied under these works are true-to-species and type, and free of disease, fungal infection and/or any other impediment to their future growth and that they have been fully acclimatised for the conditions of the site.

Submission of warranty: At the time of each delivery.

### NOTE:

- ALL NEW TREES TO BE GROWN TO AUSTRALIAN STANDARD 2303:2015 'TREE STOCK FOR LANDSCAPE USE' AT TIME OF PLANTING

# IRRIGATION PERFORMANCE SPECIFICATION

## 1 GENERAL

Provide irrigation systems as a design and construct portion of the landscape works. Works to be completed by specialised irrigation contractor.

General: Provide automatically controlled fixed irrigation systems as follows.

- Automatically irrigate all gardens on grade by means of subsurface drip irrigation
- Achieve the documented flow rates over the irrigated area.
- Meet statutory requirements for backflow prevention.

## 2 SHOP DRAWINGS

Shop drawings

General: Submit drawings and schedules showing the layout and details of the system, including the following:

- Sub surface dripper pipe layout.
- Irrigation controller locations and valve box locations and types.

## 3 PRODUCTS

Automatic control valves

General

Type: 24 V solenoid actuated hydraulic valves with flow control and a maximum operating pressure rating of at least 1 MPa.

Construction: Stainless steel bonnet holding down bolts and internal metal parts of stainless steel, able to be serviced without removal from the line.

Isolating valve: Provide a gate valve of the same size immediately upstream of each automatic control valve.

Fixed location systems

Check valves: If a rotating head is more than 300 mm below the highest head on the same automatic valve, fit an internal or external anti-drain check valve to prevent low head drainage. Pressure regulating valves: Provide pressure regulating valves at off-take points as follows:

- Adjustable between 100 and 700 kPa.
- Complete with 800 µm filter sized to suit the flow and installed immediately upstream from the pressure regulating valve.
- Installed with isolating valves upstream from the filter and downstream from the pressure regulating valve.
- Fitted for backflow prevention.
- Mount the assembly in an accessible position in a valve box, access pit or adjacent building.
- Soil moisture sensors
  - Type: Fixed ceramic moisture sensors.
  - Connection: Fit to the irrigation controller via moisture control units.

Irrigation controllers

Construction: Provide automatic controllers that are easily programmed and include the following:

- Manual cycle and individual control valve operation.
- Manual on/off operation of irrigation without loss of program.
- ≥ 4 on/off cycles per day.
- Day omit.
- 240 V input and 24 V output capable of operating 2 control valves simultaneously.
- ≥ 24 hour battery program backup.
- Power surge protection.
- Cabinet: In external locations mount in a lockable cabinet minimum IP 54 to AS 60529.
- Electrical connection: Where connected to wall outlets, provide 3 core 10 A, 240 V flexible cord and plug. Provide an isolating switch at the controller.

Integrated drip line systems

Construction: Tubing with integral drippers inserted into the tube during manufacture.

Fittings

Type: Barbed fittings rated for the pressure class of the pipe, fastened with ratchet type clamps.

Valve boxes

Requirement: Provide the following in each valve box:

- Automatic control valve.
- Isolating valve.
- Filter: 100 µm.
- Pressure-reducing valve with 170 kPa outlet pressure.

### 2.4 Valve boxes

General

Construction: UV-resistant high impact plastic with high impact snap lock plastic cover.

Location: Support on bricks at each side. Install with top, as follows:

- At finished ground level.

# MAINTENANCE SPECIFICATION

Maintenance shall mean the care and maintenance of the landscape works by accepted horticultural practice including rectifying any defects that become apparent in the landscape works under normal use. Maintenance shall include, but shall not be limited to watering, mowing, fertilising, re-seeding, re-turfing, weeding, pest and disease control, staking and tying, replanting and plant replacement, cultivation, pruning, aerating, renovating, top dressing and maintaining the site in a neat and tidy condition: The following is required:

## 1.0 GENERAL

The Landscape Contractor shall maintain the landscape works for the term of the maintenance period to the satisfaction of the Client. The Landscape Contractor shall attend to the site on a fortnightly basis. The maintenance period shall commence at practical completion

## 2.0 IRRIGATION / WATERING

All subsurface drip irrigation to be flushed and tested on a monthly basis. Irrigation filters, valves and zones to be reviewed and adjusted onsite to suit localised growing conditions of plant material. In excess of automatic irrigation on periodic anomalies of high temperatures, hand watering of plants may be required to ensure continuous health growth. Watering of street trees shall be carried out on a fortnightly basis throughout the maintenance period and modified based on weekly rainfall.

## 3.0 RUBBISH REMOVAL

During the term of the maintenance period the Landscape Contractor shall remove all rubbish and green waste that may accumulate through the intended use of the area and or maintenance works. This work shall be carried out at regular fortnightly intervals in order for the area to be observed in a completely clean and tidy condition.

## 4.0 REPLACEMENTS

The Landscape Contractor shall replace all plants that are missing, unhealthy or dead at the Landscape Contractor's cost. Replacements shall be of the same size, quality and species as the plant that has failed unless otherwise directed by the Landscape Architect. Replacements shall be made on a continuing basis not exceeding two (2) weeks after the plant has died or is seen to be missing. The landscape contractor is to report any evidence of theft or vandalism to the Client within three (3) days of them occurring.

## 5.0 MULCHED SURFACES

All mulched surfaces shall be maintained in a clean and tide condition and be reinstated if necessary to ensure the specified depth outlined in the construction details is maintained. Ensure mulch is kept clear of plant stems at all times.

## 6.0 PEST AND DISEASE CONTROL

The Landscape Contractor shall spray against insect and fungus infestation and all spraying shall be carried out in accordance with the manufacturer's directions. Report all instances of pests and diseases (immediately on detection) to the Landscape Architect prior to spraying.

## 7.0 WEED ERADICATION

Eradicate weeds by environmentally acceptable methods using a organic herbicide suitable for use in residential areas, at the recommended maximum rate. Regularly remove by hand, weed growth that may occur or recur throughout grassed, planted and mulched areas. Remove weed growth from an area 1000mm diameter around the base of trees in grassed areas. Continue eradication throughout the course of the works and during the maintenance period.

## 8.0 SOIL SUBSIDENCE

Any soil subsidence or erosion which may occur after the soil filling and preparation operations shall be made good by the Landscape Contractor at no cost to the client.

## 9.0 WARRANTY

Laminated copies of the "As built" drawings are to remain on site at all times by the contractors. This documentation is to include the following:

1. Copies of warranties and guarantees relating to all materials and plant used in construction;
2. Manufacturer's contact details and copies of manufacturers' typical details and specification;
3. Decommissioning procedures relating to the scope of landscape works.

# PLANTING, IRRIGATION AND MAINTENANCE SPECIFICATION

**project:** The Yards, Bomaderry  
**client:** SCCH  
**date:** 2024 10 22  
**revision:** B  
**drawn:** RA  
**checked:** AL

**TaylorBrammer**  
TAYLOR BRAMMER LANDSCAPE ARCHITECTS PTY LTD  
SYDNEY STUDIO  
218 Oxford Street, Sydney, NSW, 2000 E: sydney@taylorbrammer.com.au T: 61 2 0397 8866  
Copyright of Taylor Brammer Landscape Architects Pty Ltd ABR 61 098 04 980

# LA700