

EARTHWORKS VOLUMES


EXISTING TOPSOIL STRIPPING VOLUME (cu.m) REFER NOTE No.2	EXCAVATION OF EXISTING CREEKS AND DAMS (cu.m) REFER NOTE No.3	EXISTING ROCK CUT (cu.m)	EXISTING VENM CUT (cu.m)	NET CUT (EXISTING ROCK CUT + EXISTING VENM CUT) (cu.m)	NET FILL (cu.m)	BALANCE (cu.m)
-138,262	-38,282	-197,755	-347,410	-545,165	1,444,900	899,734

NOTES

- ALL BULK EARTHWORKS TO BE CARRIED OUT IN ACCORDANCE WITH PSM BULK EARTHWORKS SPECIFICATION PSM154-1325 (REV 0 DATED MARCH 2016)
- EXISTING TOPSOIL ASSUMED STRIPPED 200mm IN AREAS OF PROPOSED CUT AND AREAS OF PROPOSED FILL UP TO 3m IN DEPTH.
- ADDITIONAL EXCAVATION OF EXISTING CREEKS AND DAMS WITHIN SITE AREA HAVE BEEN CALCULATED TO A DEPTH OF 1m BELOW EXISTING INVERT AND WIDTH OF EXISTING CREEK/DAM EXTENT. VOLUMES ARE APPROXIMATE.
- THE VOLUMES DO NOT TAKE INTO ACCOUNT THE FOLLOWING -
 • BULKING FACTORS OF REMOVED CUT
 • REMOVAL OF EXISTING BUILDING SLABS AND PAVEMENTS
 • REMOVAL AND/OR REMEDIATION OF ANY EXISTING UNCONTROLLED FILL
 • PROPOSED LANDSCAPING
 • PROPOSED FILLING WITHIN EARTHWORKS AND BACKFILL MATERIAL
- ADDITIONAL 1m OF SANDSTONE TO BE PLACED ON LOT 1B UPON COMPLETION OF EARTHWORKS TO TOLERANCES.

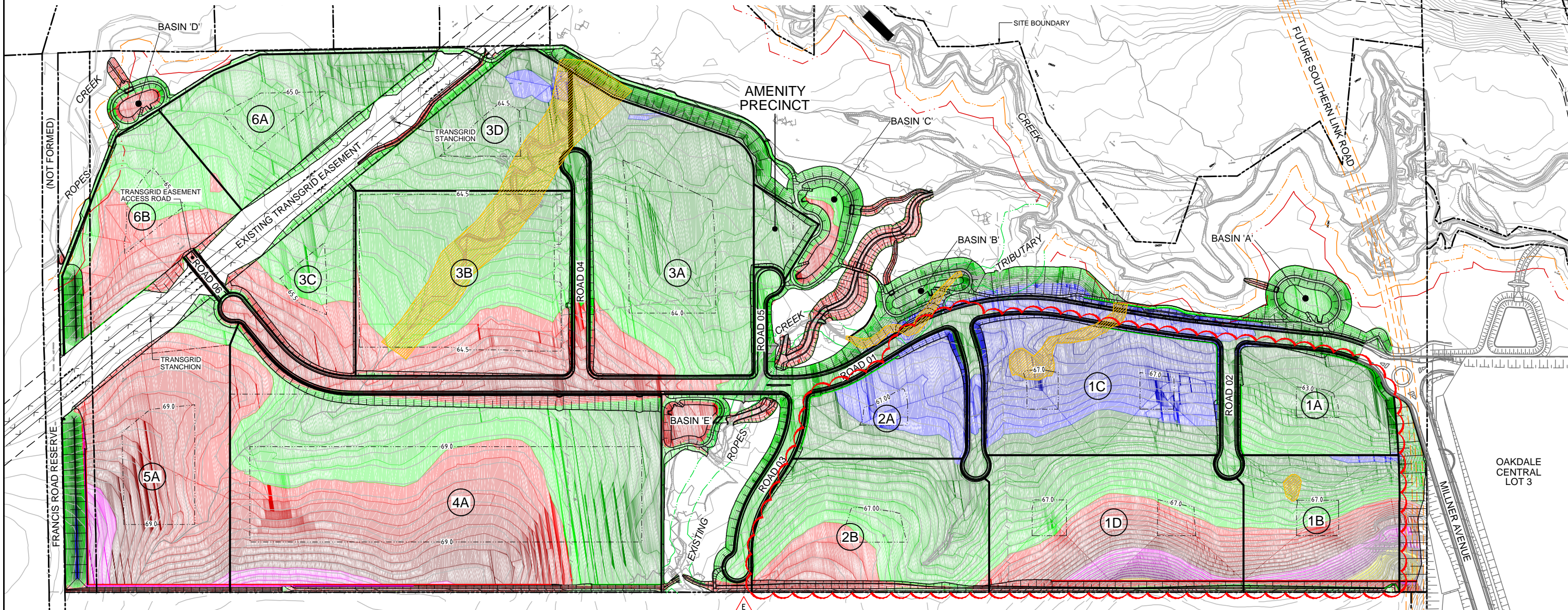
ITEM	TOLERANCE
USE WITH EXCEPTION OF PAD 3B / SP1	CUT / FILL SUB GRADE ± 50mm
PAD 3B / SP1	CUT / FILL SUB GRADE ± 25mm
ROAD VERGES	LEVEL ± 25mm
BATTER SLOPES	LEVEL ± 100mm

LEGEND

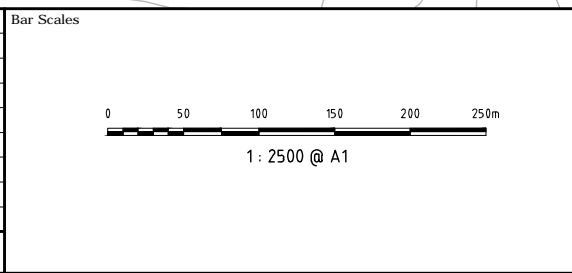
 EXCAVATION OF EXISTING CREEKS AND DAMS. REFER NOTE 2.

EARTHWORKS CUT/FILL LEGEND

LOWER VALUE	UPPER VALUE	COLOUR	LOWER VALUE	UPPER VALUE	COLOUR	LOWER VALUE	UPPER VALUE	COLOUR	LOWER VALUE	UPPER VALUE	COLOUR
-15.5m	to	-14.0m	-7.5m	to	-7.0m	-0.5m	to	0m	6.5m	to	7.0m
-14.0m	to	-14.5m	-7.0m	to	-6.5m	0m	to	0.5m	7.0m	to	7.5m
-14.5m	to	-13.0m	-6.5m	to	-6.0m	0.5m	to	1.0m	7.5m	to	8.0m
-13.0m	to	-12.5m	-6.0m	to	-5.5m	1.0m	to	1.5m	8.0m	to	8.5m
-12.5m	to	-12.0m	-5.5m	to	-5.0m	1.5m	to	2.0m	8.5m	to	9.0m
-12.0m	to	-11.5m	-5.0m	to	-4.5m	2.0m	to	2.5m	9.0m	to	9.5m
-11.5m	to	-11.0m	-4.5m	to	-4.0m	2.5m	to	3.0m	9.5m	to	10.0m
-11.0m	to	-10.5m	-4.0m	to	-3.5m	3.0m	to	3.5m			
-10.5m	to	-10.0m	-3.5m	to	-3.0m	3.5m	to	4.0m			
-10.0m	to	-9.5m	-3.0m	to	-2.5m	4.0m	to	4.5m			
-9.5m	to	-9.0m	-2.5m	to	-2.0m	4.5m	to	5.0m			
-9.0m	to	-8.5m	-2.0m	to	-1.5m	5.0m	to	5.5m			
-8.5m	to	-8.0m	-1.5m	to	-1.0m	5.5m	to	6.0m			
-8.0m	to	-7.5m	-1.0m	to	-0.5m	6.0m	to	6.5m			



Issue	Description	Date
E	ISSUED FOR MOD 4 APPLICATION	05-05-17
D	ISSUED FOR REVIEW	13-04-16
C	ISSUED FOR S96 APPLICATION	19-09-16
B	ISSUED FOR INFORMATION	15-07-16
A	ISSUED FOR SSD APPLICATION	03-09-15



THIS DRAWING CANNOT BE COPIED OR REPRODUCED IN ANY FORM OR USED FOR ANY OTHER PURPOSE OTHER THAN THAT ORIGINALLY INTENDED WITHOUT THE WRITTEN PERMISSION OF AT&L

Client



Scales	1 : 2500	Drawn	JB
		Designed	JB
Grid	MGA	Checked	AMc
Height Datum	AHD	Approved	


Project

OAKDALE SOUTH

Title

BULK EARTHWORKS CUT/FILL PLAN

Civil Engineers and Project Managers



Level 7, 153 Walker Street
North Sydney NSW 2060
ABN 96 130 882 405
Tel: 02 9439 1777
Fax: 02 9923 1065
www.atl.net.au
info@atl.net.au

Status	FOR APPROVAL	A1
NOT TO BE USED FOR CONSTRUCTION		
Drawing No.	C1020	Issue
Project No.	14-193	E