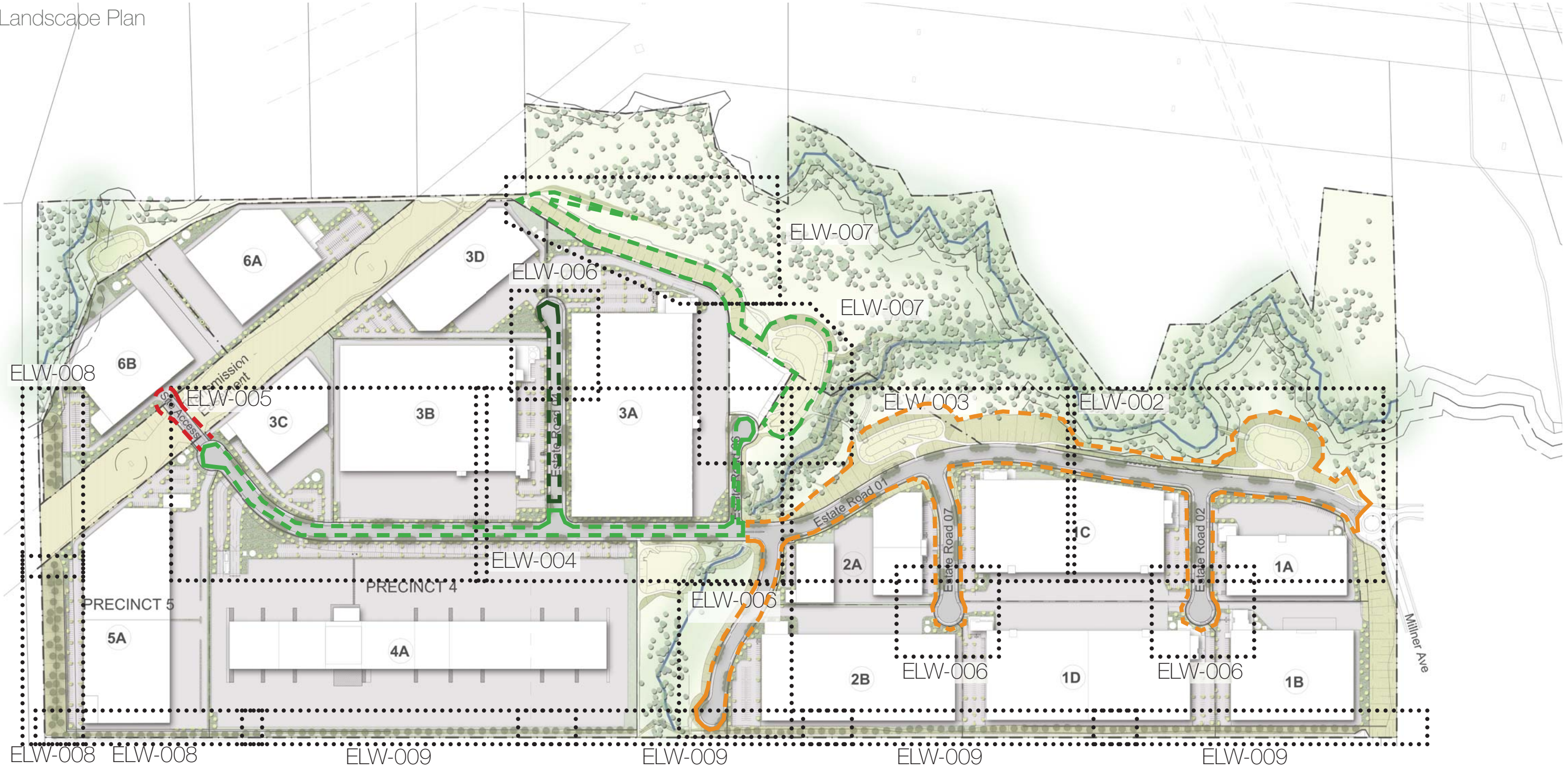


# Stage 1 Development Works

## Landscape Plan



Construction Stage 3

Construction Stage 2

Construction Stage 1

---  
(Stage 2 - Optional Cul-De-Sac)



Prepared by:  
**SITE IMAGE**  
Landscape Architects

### Oakdale South - MOD 4 | Landscape



Client  
Site Image Job Number

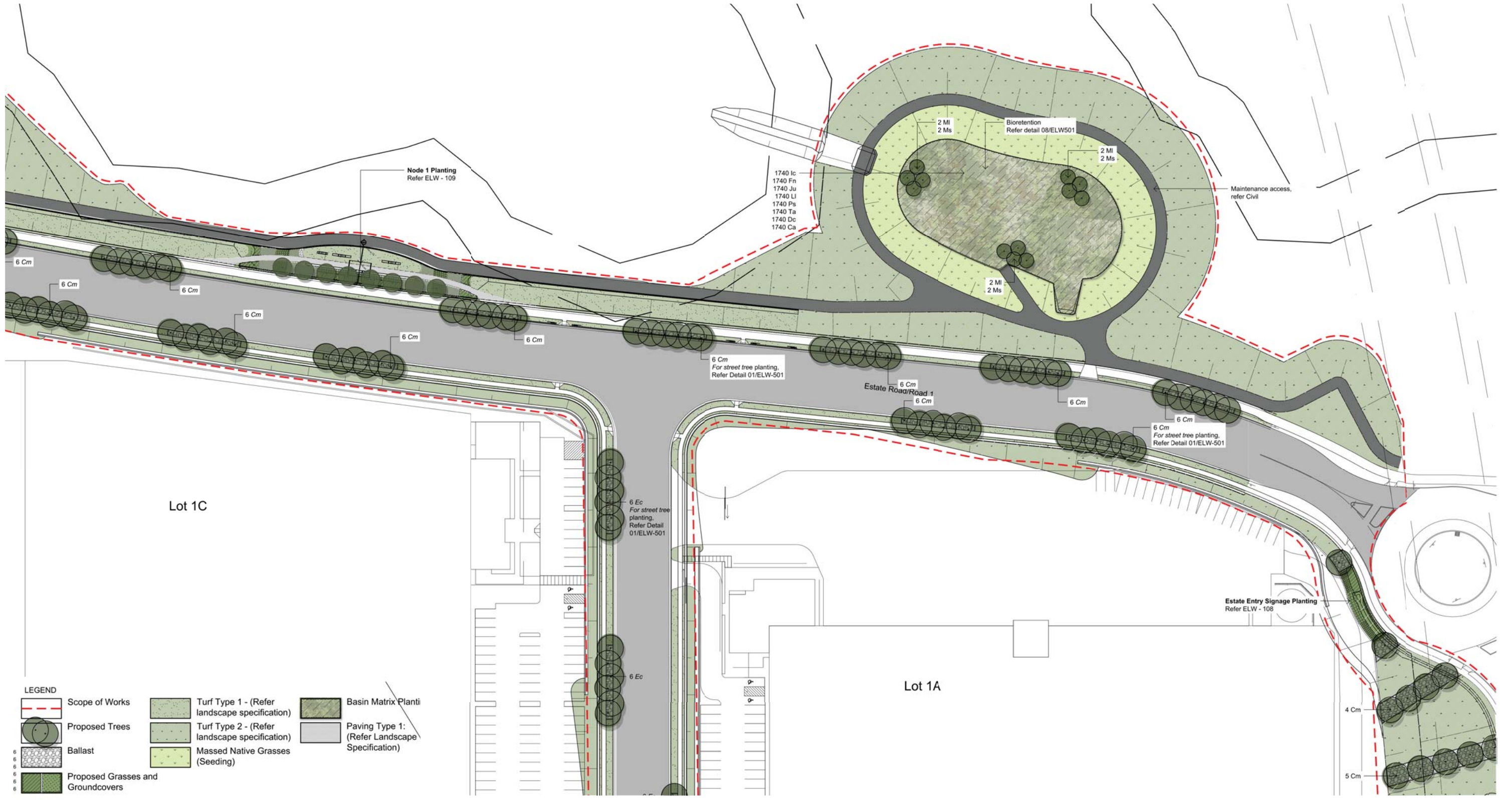
Goodman  
SS15-3057

Drawing Number  
Issue  
Date

ELW - 001  
J  
21.06.2017

# Estate Landscape Works

## Landscape Plan



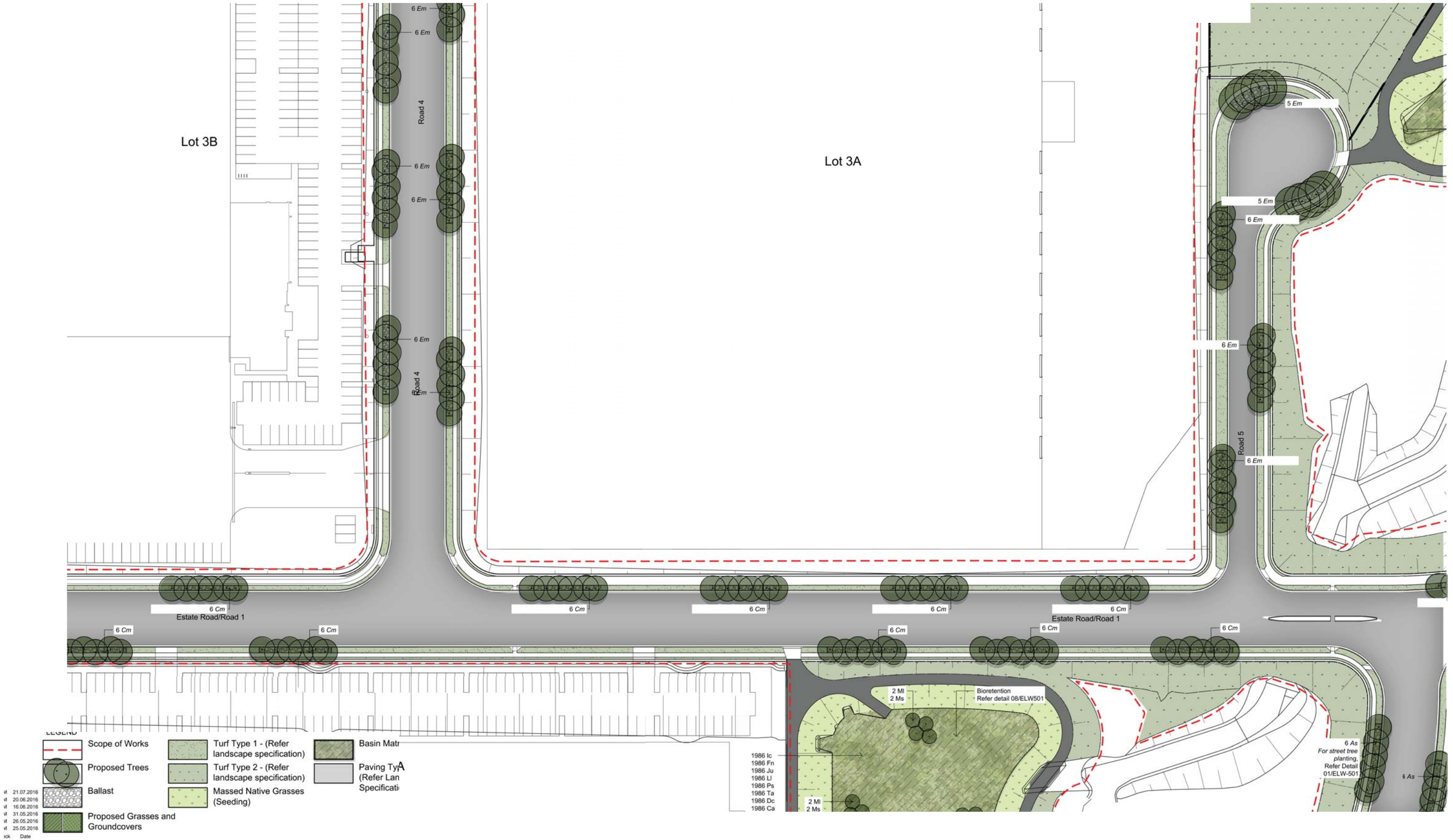
# Estate Landscape Works

## Landscape Plan



# Estate Landscape Works

## Landscape Plan



# Estate Landscape Works

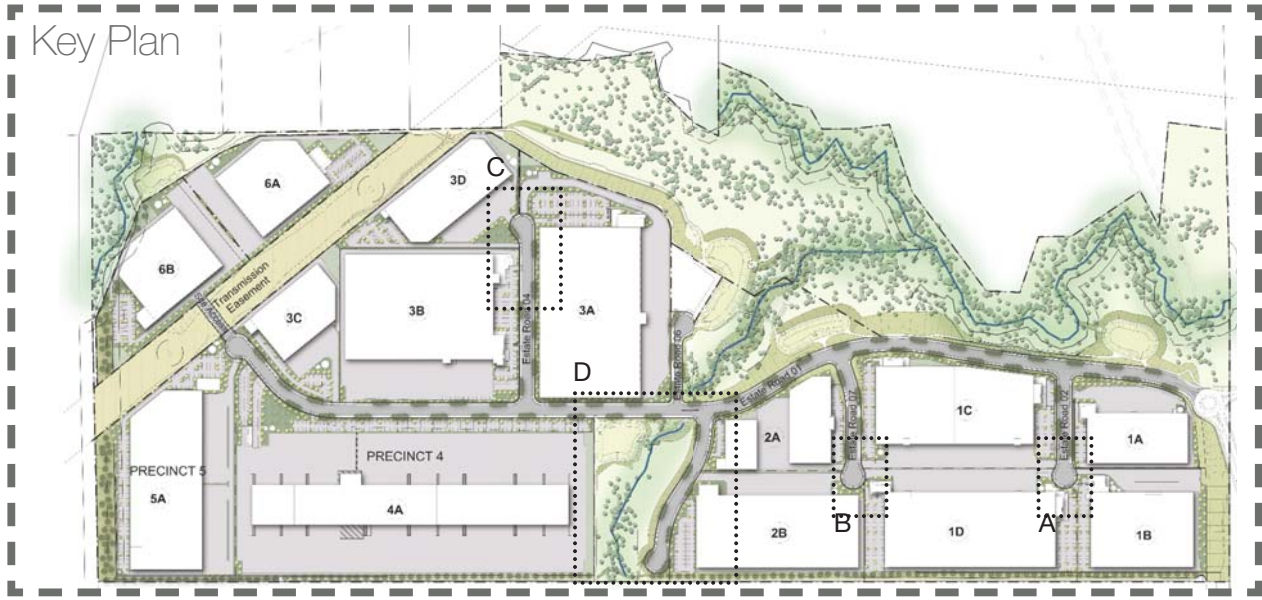
## Landscape Plan



# Estate Landscape Works

## Landscape Plan

Key Plan



Plan A

Plan B

Plan C

Plan D

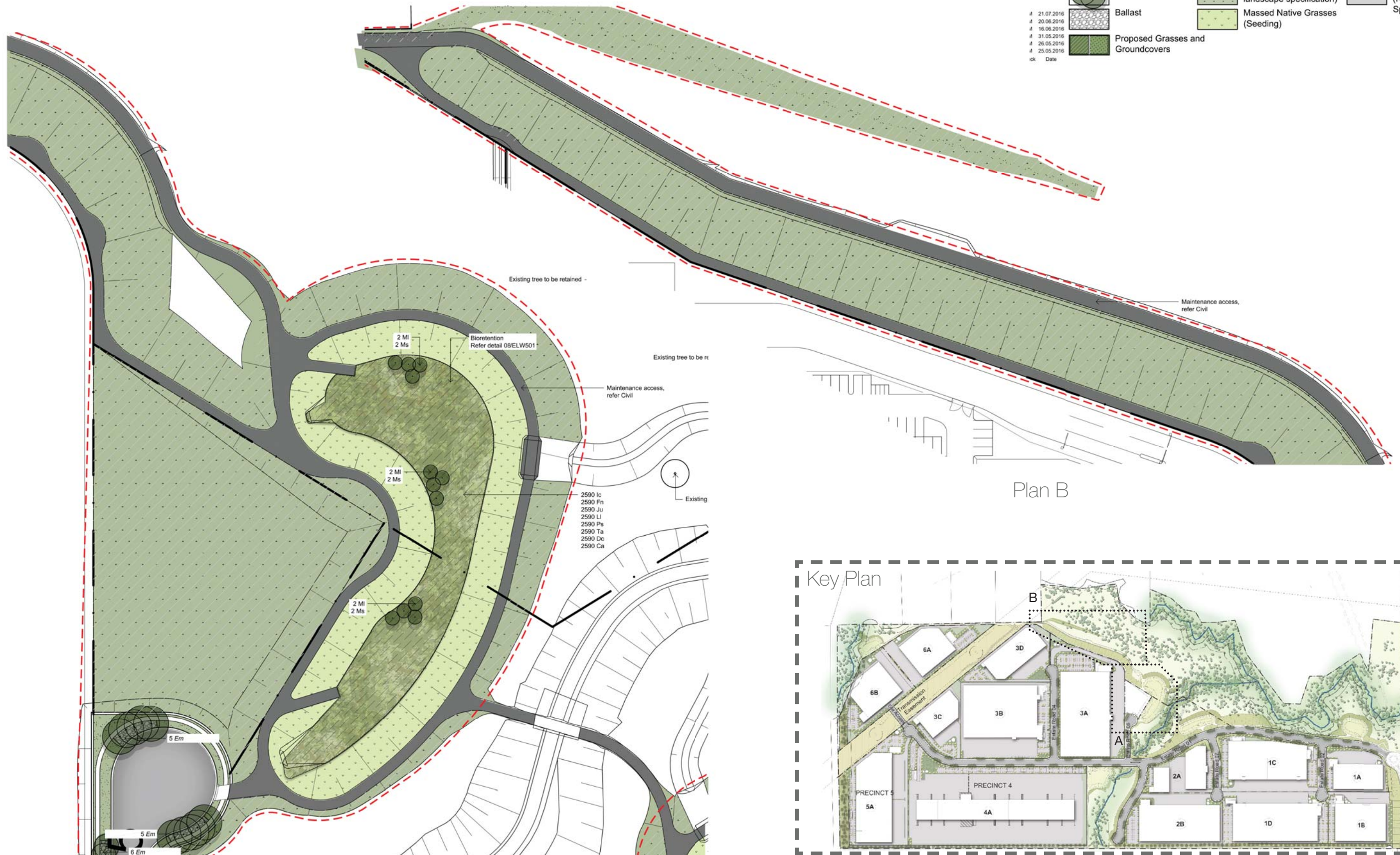
LEGEND					
	Scope of Works		Turf Type 1 - (Refer landscape specification)		Basin Mat
	Proposed Trees		Turf Type 2 - (Refer landscape specification)		Paving Type (Refer Landscape Specification)
	Ballast		Massed Native Grasses (Seeding)		
	Proposed Grasses and Groundcovers				

21.07.2016  
 20.06.2016  
 16.06.2016  
 31.05.2016  
 28.05.2016  
 25.05.2016  
 Date

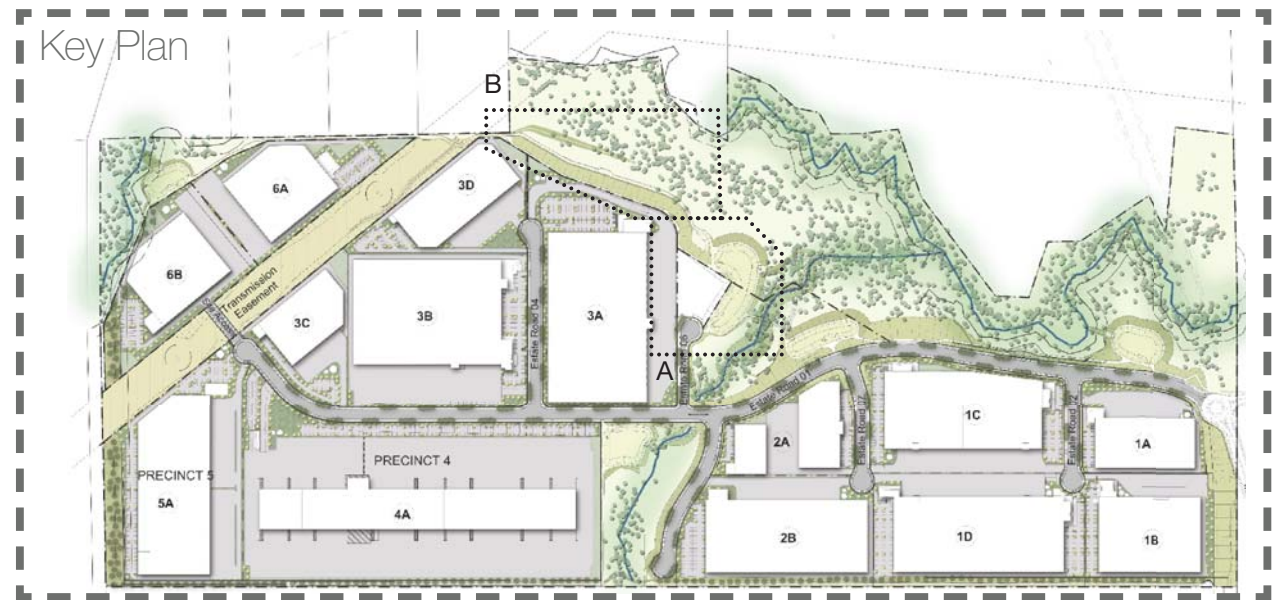
# Estate Landscape Works

## Landscape Plan

LEGEND					
	Scope of Works		Turf Type 1 - (Refer landscape specification)		Basin Matr
	Proposed Trees		Turf Type 2 - (Refer landscape specification)		Paving Typ (Refer Lan Specificati
	Ballast		Massed Native Grasses (Seeding)		
	Proposed Grasses and Groundcovers				



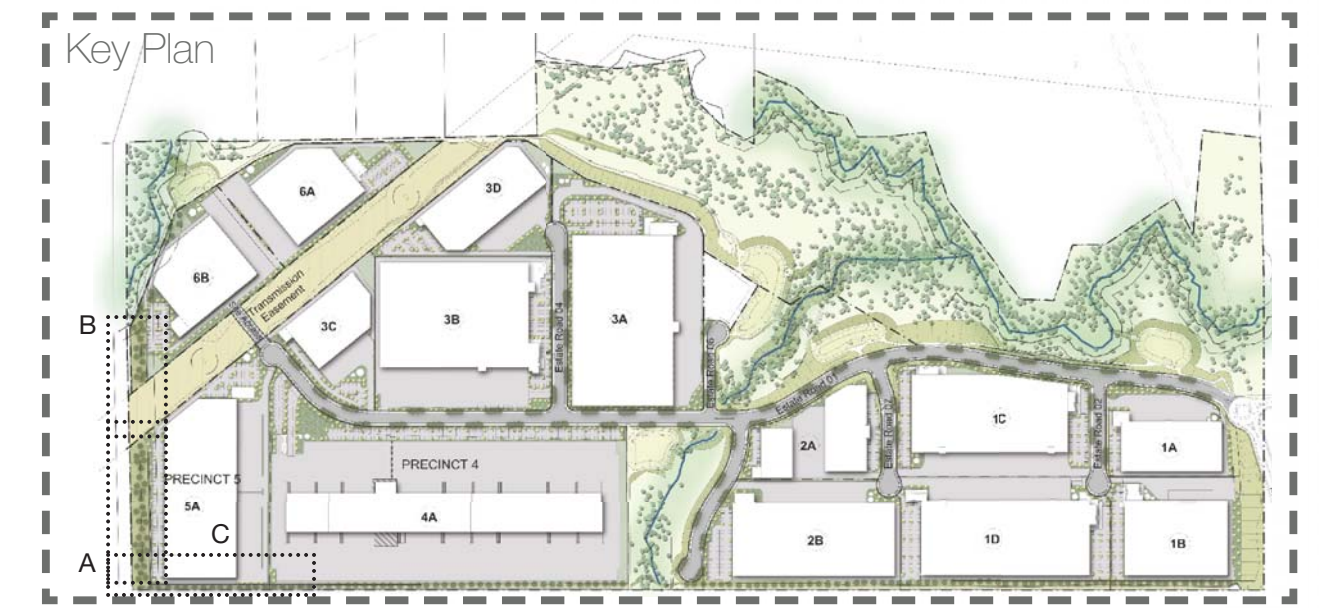
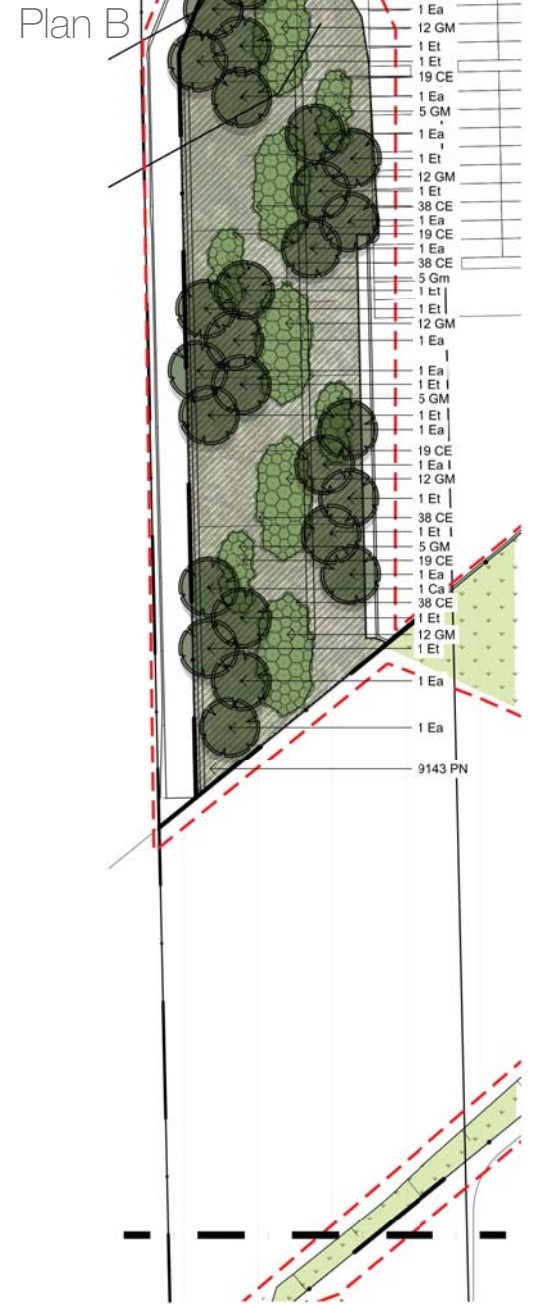
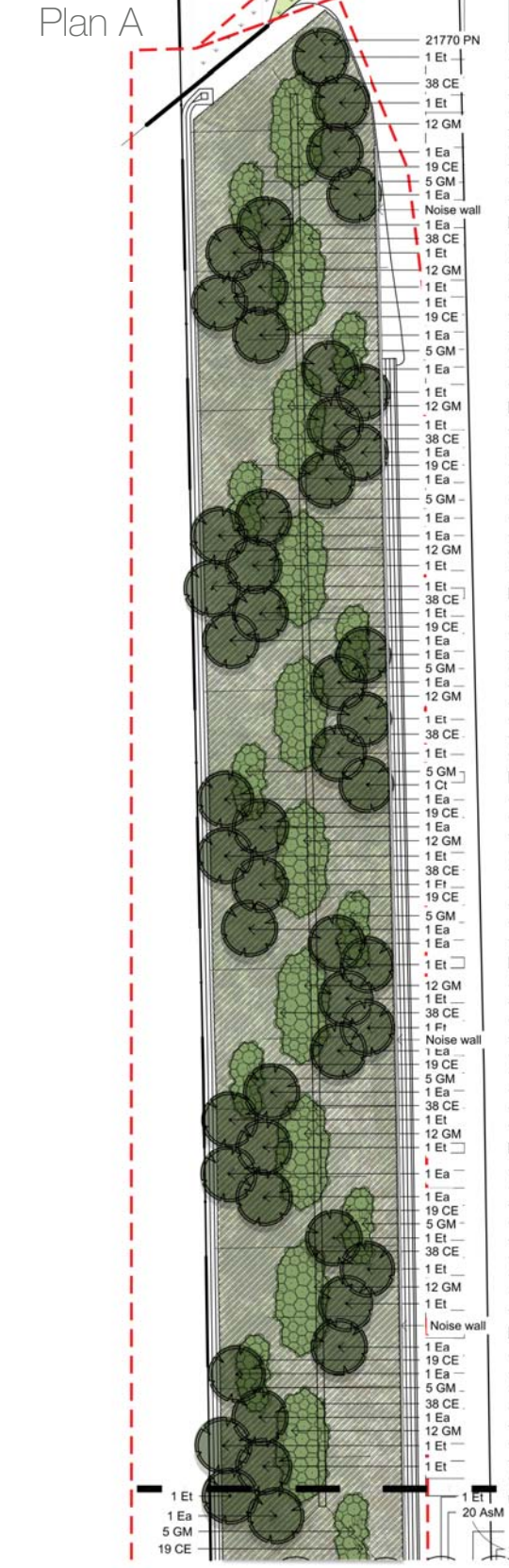
Plan B



Plan A

# Estate Landscape Works

Landscape Plan

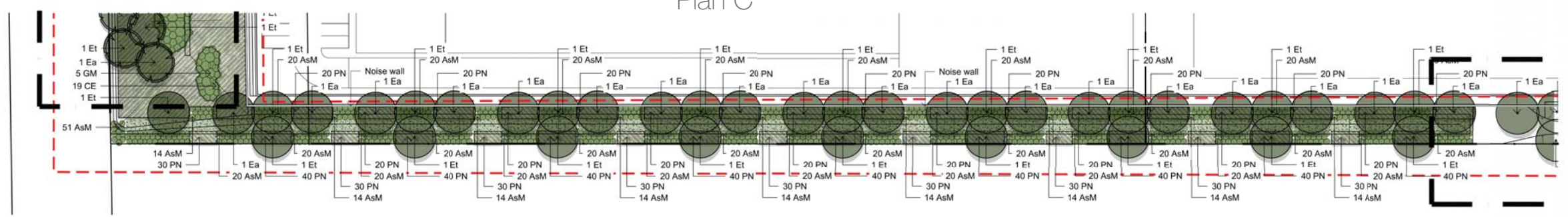


**LEGEND**

Scope of Works	Turf Type 1 - (Refer landscape specification)	Basin Matr
Proposed Trees	Turf Type 2 - (Refer landscape specification)	Paving Typ (Refer Lan Specificati
Ballast	Massed Native Grasses (Seeding)	
Proposed Grasses and Groundcovers		

# 21.07.2016  
 # 20.06.2016  
 # 16.06.2016  
 # 31.05.2016  
 # 26.05.2016  
 # 25.05.2016  
 ck Date

Plan C

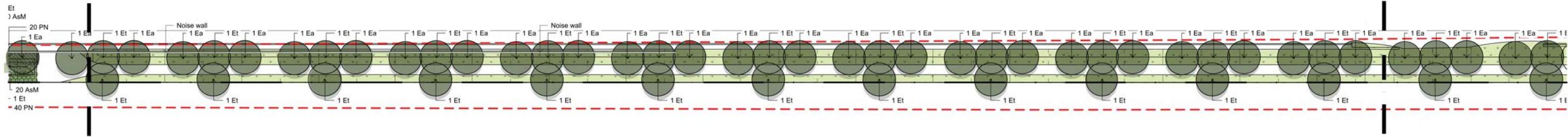


Estate Landscape Works  
Landscape Plan

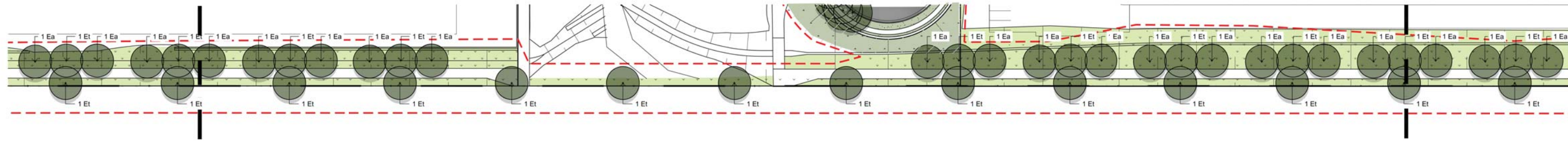


LEGEND					
	Scope of Works		Turf Type 1 - (Refer landscape specification)		Basin Matr
	Proposed Trees		Turf Type 2 - (Refer landscape specification)		Paving Typ (Refer Lan Specificati
	Ballast		Massed Native Grasses (Seeding)		
	Proposed Grasses and Groundcovers				

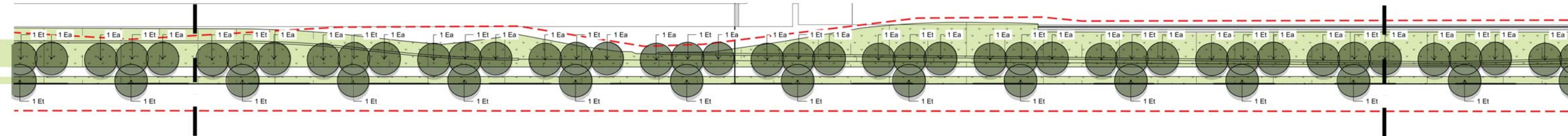
Plan A



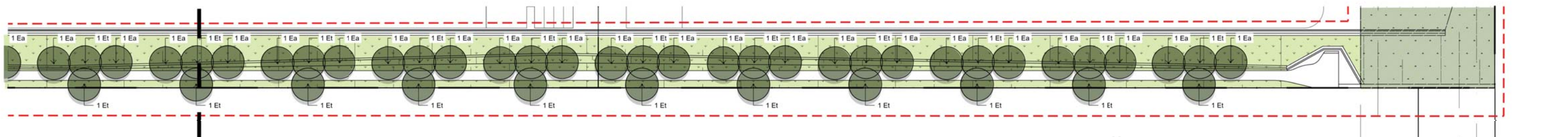
Plan B



Plan C

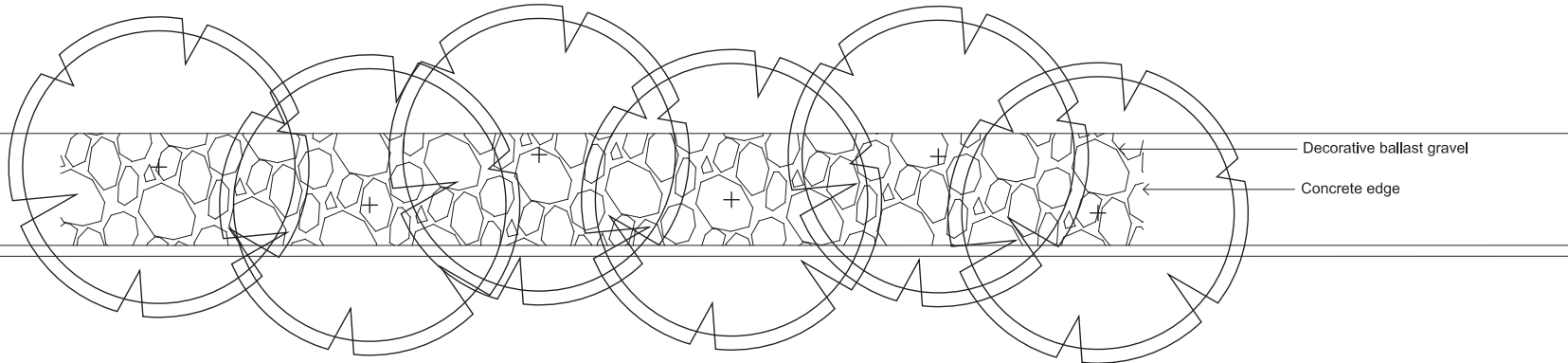


Plan D



# Estate Landscape Works

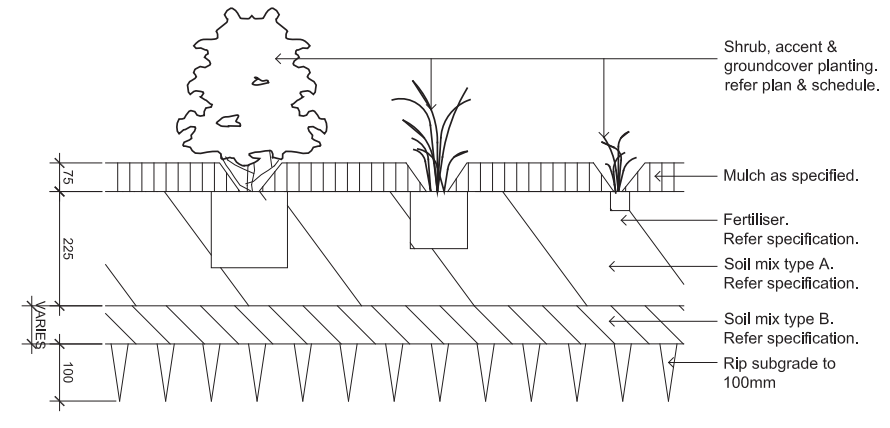
## Typical Landscape Details & Plant Schedule (Not to scale)



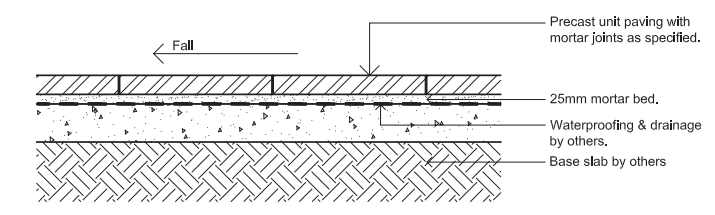
**01** Street Tree Planting Detail  
ELW-501

Code	Botanical Name	Common Name	Mature Height (m.)	Mature Spread (m.)	Spacings	Pot Size	CPW	Quantity
<b>Trees</b>								
As	<i>Angophora subvelutina</i>	Broad-leaved Apple	25	15	As Shown	75L	+	48
Ca	<i>Cupaniopsis anacardioides</i>	Tuckeroo	8	8	As Shown	200L		11
Cm	<i>Corymbia maculata</i>	Spotted Gum	15	7	As Shown	75L	+	303
Ea	<i>Eucalyptus amplifolia</i>	Cabbage Gum	30	8	As Shown	75L	*	143
Ec	<i>Eucalyptus crebra</i>	Narrow Leaved Ironbark	15	6	As Shown	75L	*	60
Em	<i>Eucalyptus moluccana</i>	Grey Box	20	8	As Shown	75L	*	82
Et	<i>Eucalyptus tereticomis</i>	Forest Red Gum	30	8	As Shown	75L	*	148
Li	<i>Lagerstroemia indica 'Natchez'</i>	Crepe Myrtle	8	6	As Shown	75L		2
<b>Shrubs</b>								
AsM	<i>Acmena smithii var. minor</i>	Dwarf Lillypilly	3	2	As Shown	300mm		1048
CE	<i>Callistemon 'Endevour'</i>	Bottlebrush	2.5	2.5	As Shown	300mm		878
CLJ	<i>Callistemon viminalis 'Little John'</i>	Little John Bottlebrush	0.8	0.8	As Shown	300mm		86
GM	<i>Grevillea Moonlight</i>	Moonlight Grevillea	4	3	As Shown	300mm		250
NGS	<i>Nandina 'Gulf Stream'</i>	Nandina	0.75	0.5	As Shown	300mm		498
Ri	<i>Rhaphiolepis indica</i>	Indian Hawthorn	2.5	2.5	As Shown	300mm		302
<b>Groundcovers and Grasses</b>								
PN	<i>Pennisetum 'Nafay'</i>	Nafay Pennisetum	0.6	0.6	5/m <sup>2</sup>	150mm		31883
TT	<i>Trachelospermum jasminoides 'Tricolour'</i>	Tricolour	0.5	2	5/m <sup>2</sup>	150mm		710
<b>Basin Tree Planting</b>								
MI	<i>Melaleuca linatifolia</i>	Flax Leaved Paperbark	10	4	As Shown	75L		24
Ms	<i>Melaleuca styphelioides</i>	Prickly Leaved Paperbark	10	3	As Shown	75L		24
<b>Basin Matrix Planting</b>								
Ic	<i>Imperata cylindrica</i>	Blady Grass	1	1	8/m <sup>2</sup>	75mm Tube		8251
Fn	<i>Ficinia nodosa</i>	Knobby Club Rush	1	1	8/m <sup>2</sup>	75mm Tube		8251
Ju	<i>Juncus usitatus</i>	Common Rush	1	0.5	8/m <sup>2</sup>	75mm Tube		8251
LI	<i>Lomandra longifolia</i>	Matrush	0.7	1	8/m <sup>2</sup>	75mm Tube		8251
Ps	<i>Poa sieberiana</i>	Grey Tussock Grass	0.4	0.3	8/m <sup>2</sup>	75mm Tube		8251
Ta	<i>Themeda australis</i>	Kangaroo Grass	1.5	0.5	8/m <sup>2</sup>	75mm Tube		8251
Dc	<i>Dianella caerulea</i>	Blue Flax-lily	1	1	8/m <sup>2</sup>	75mm Tube		8251
Ca	<i>Carex appressa</i>	Tussock Sedge	0.5	0.5	8/m <sup>2</sup>	75mm Tube		8251

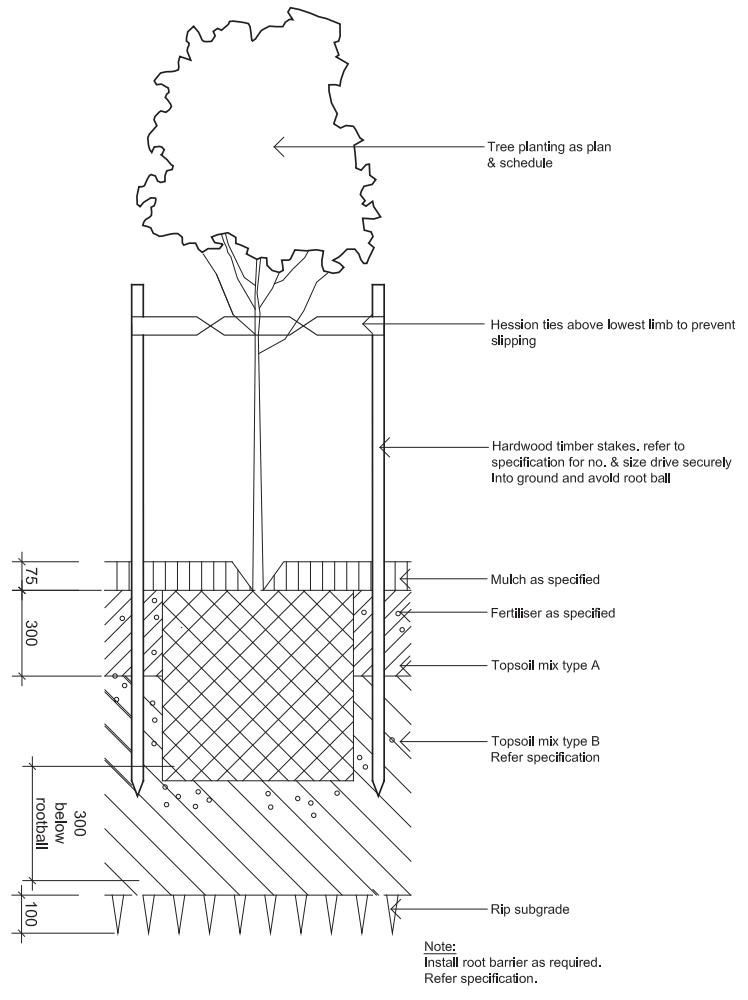
Plant quantities and arrangement subject to design development



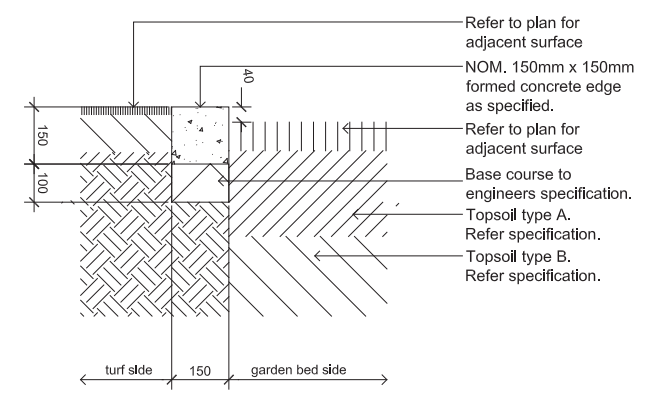
**03** SHRUB, P & GROUND COVER PLANTING ON GRADE  
SCALE 1:10  
ELW-501



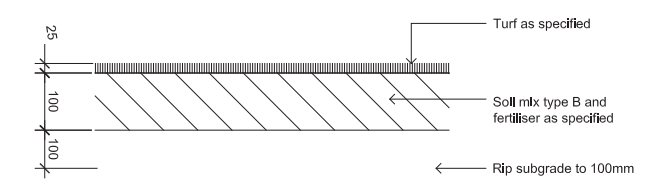
**06** PRECAST UNIT PAVERS ON SUSPENDED SLAB  
SCALE 1:10  
ELW-501



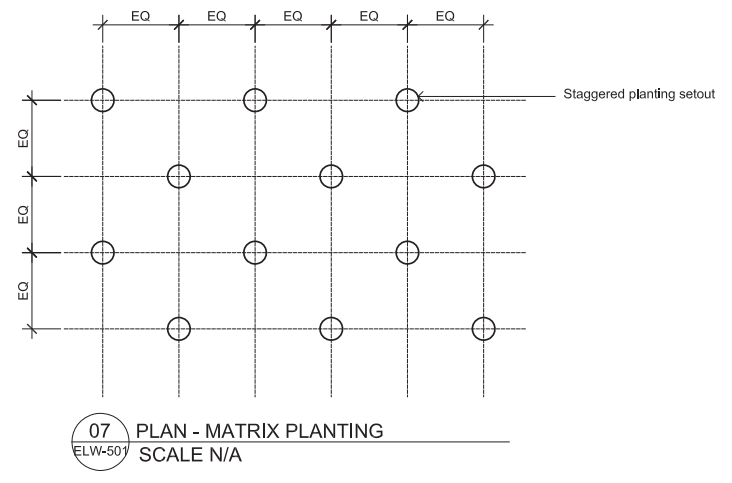
**02** DETAIL - 75-200L TREE PLANTING ON GRADE  
SCALE 1:10  
ELW-501



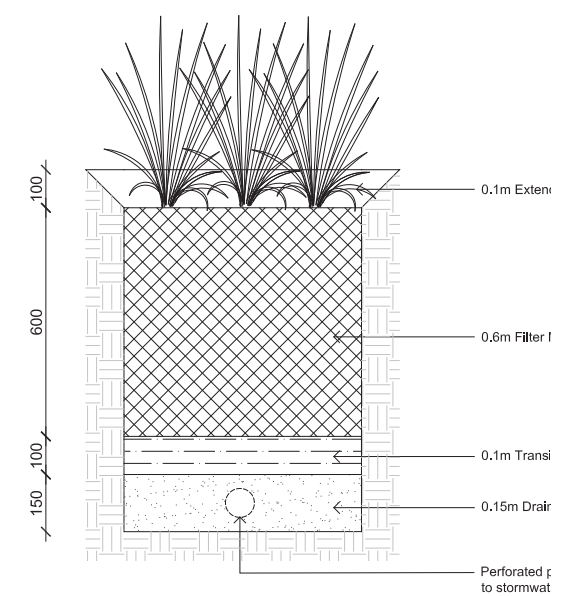
**04** TYPICAL CONCRETE EDGE  
SCALE 1:10  
ELW-501



**05** DETAIL - TURF ON EV  
SCALE 1:10  
ELW-501



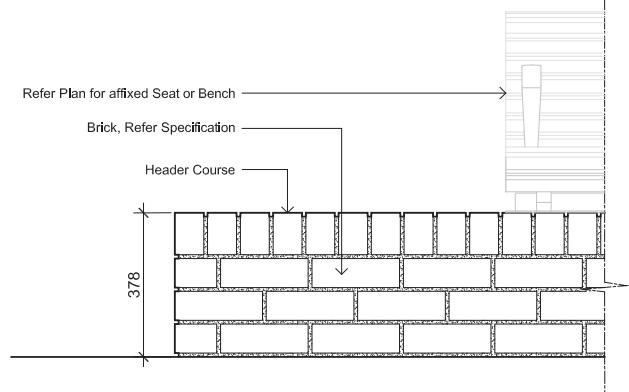
**07** PLAN - MATRIX PLANTING  
SCALE N/A  
ELW-501



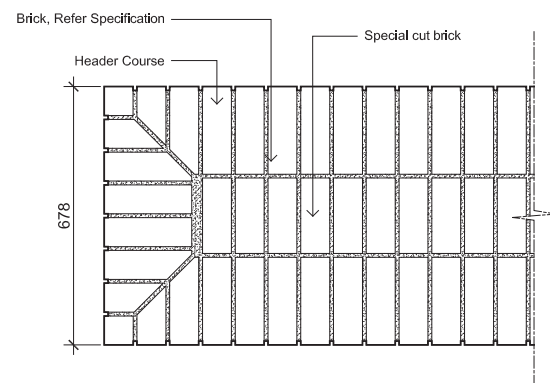
**08** SECTION - BIORETENTION  
SCALE 1:10  
ELW-501

# Estate Landscape Works

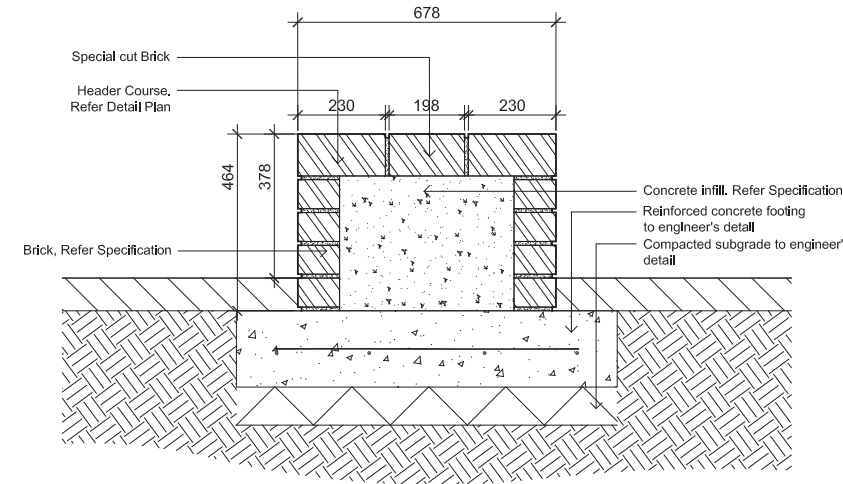
## Typical Landscape Details (Not to scale)



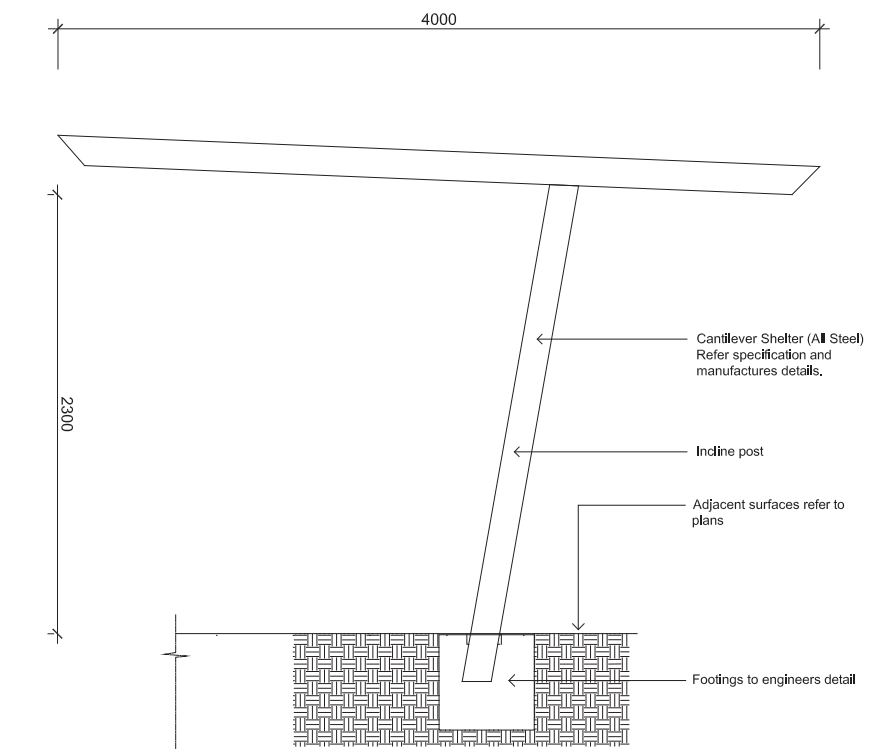
01 TYPICAL BRICK SEATING WALL ELEVATION  
ELW-502



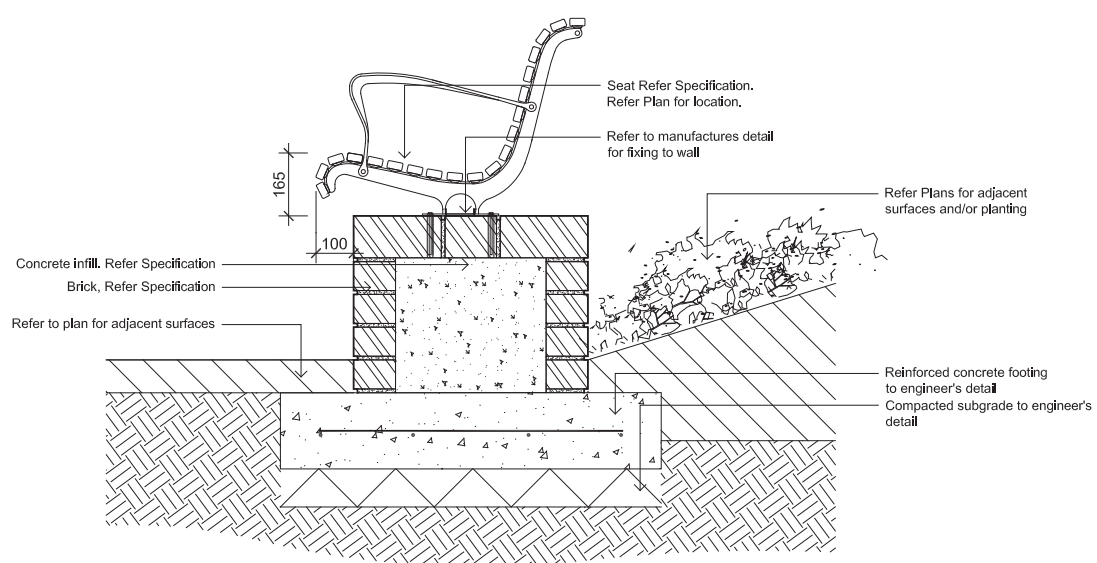
02 TYPICAL BRICK SEATING WALL PLAN  
ELW-502



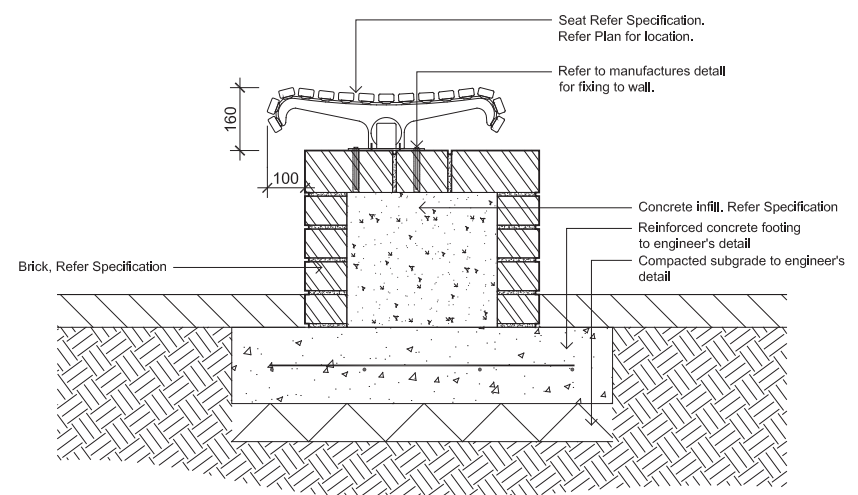
03 TYPICAL BRICK SEATING WALL  
ELW-502



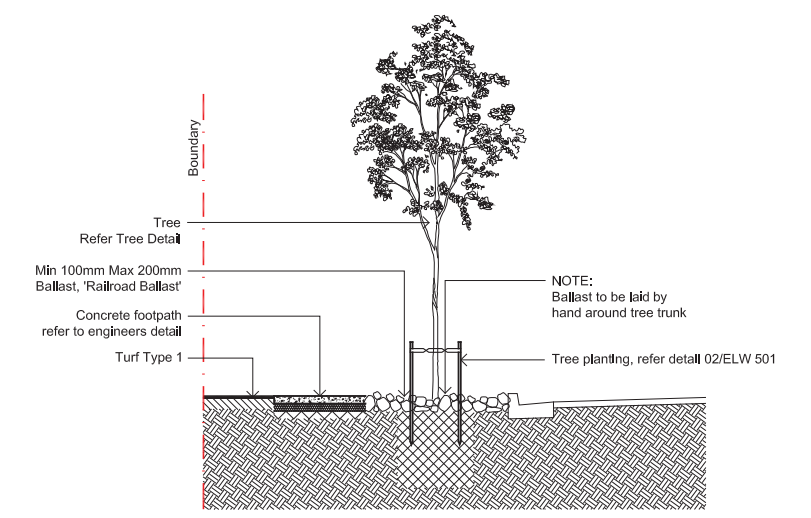
04 PERGOLA  
ELW 502



05 BRICK SEATING WALL WITH SEAT  
ELW-502



06 BRICK SEATING WALL WITH BENCH  
ELW-502



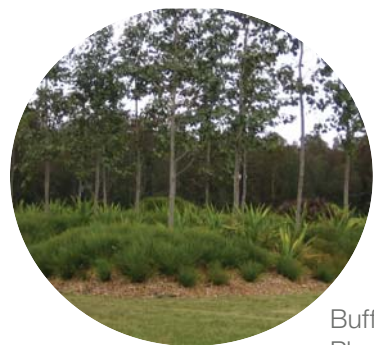
07 Street Tree Planting Detail  
ELW-502



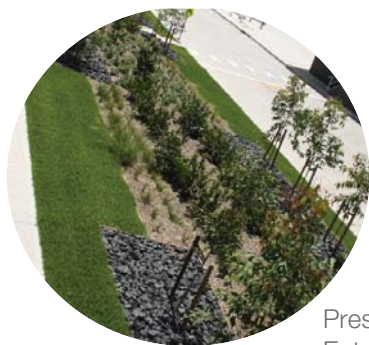
**Oakdale South - MOD 4**  
Precinct 1 Landscape  
June 2017

# Lot Landscaping - Precinct 1

Landscape Plan 1:2000



Buffer / Screen Planting



Presentation / Entry Planting



Feature 'Railroad Rock Ballast' Banding



Secondary Planting Zone - Grid of Trees in Turf

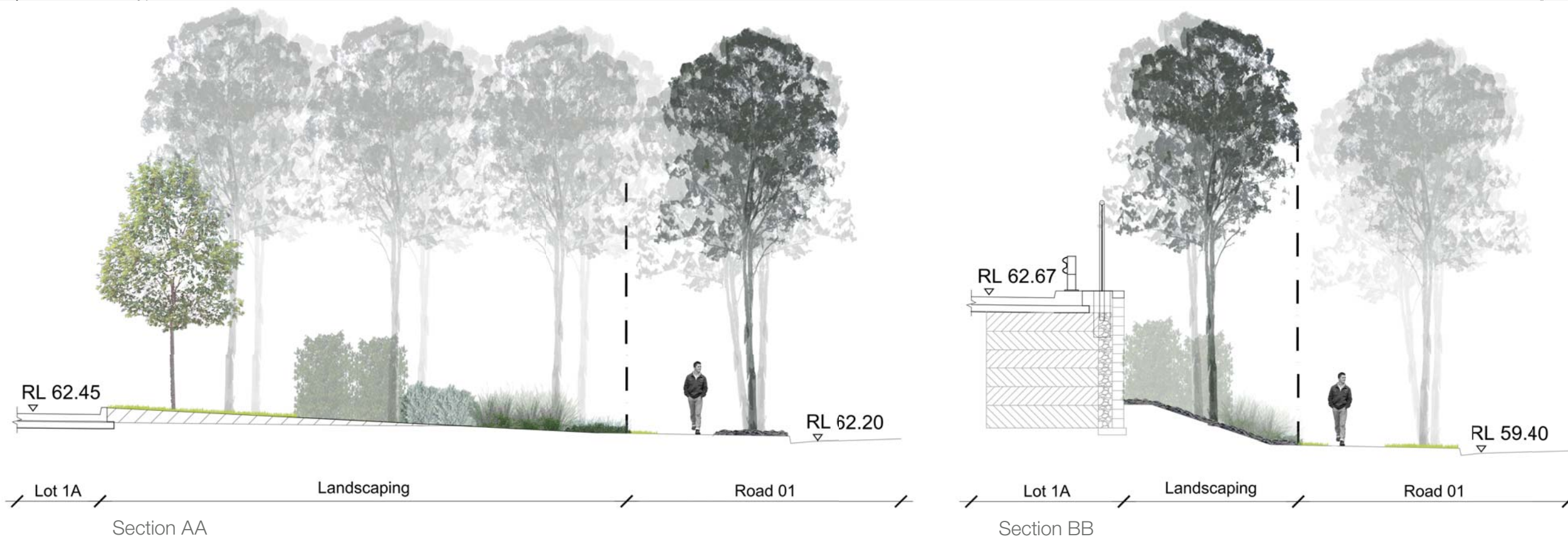
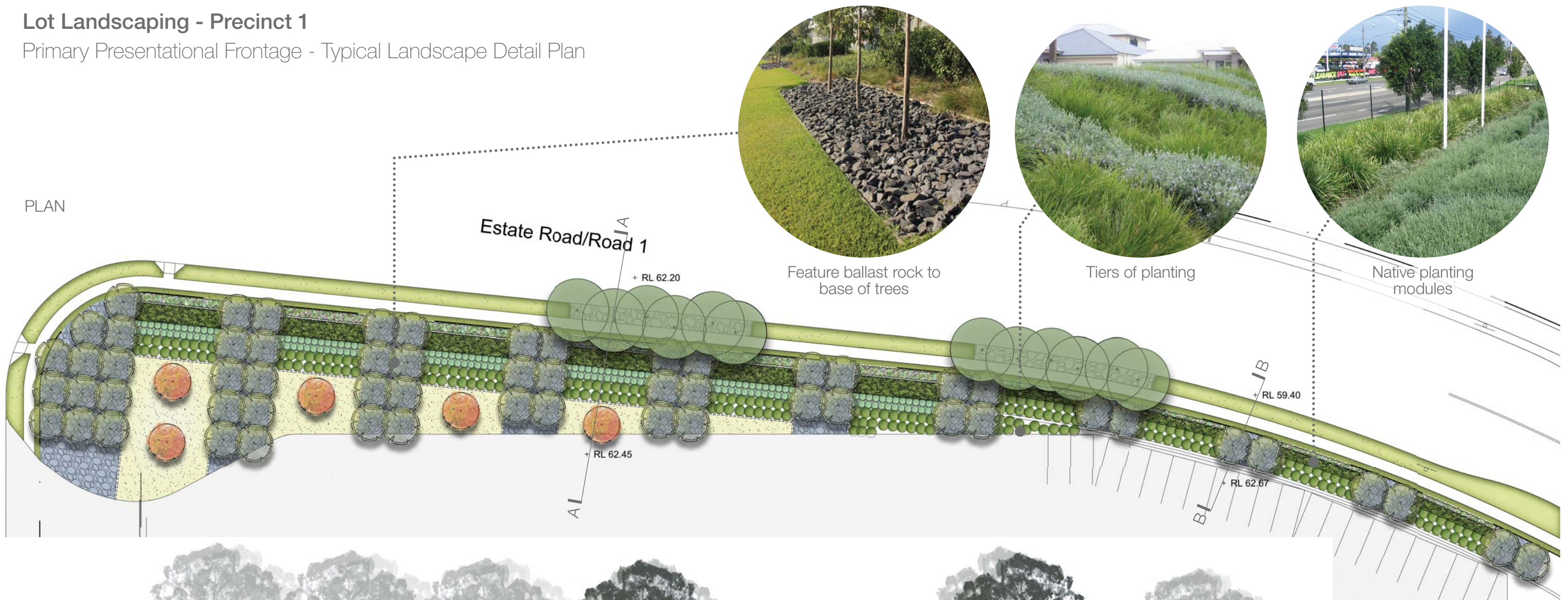


Carpark Planting

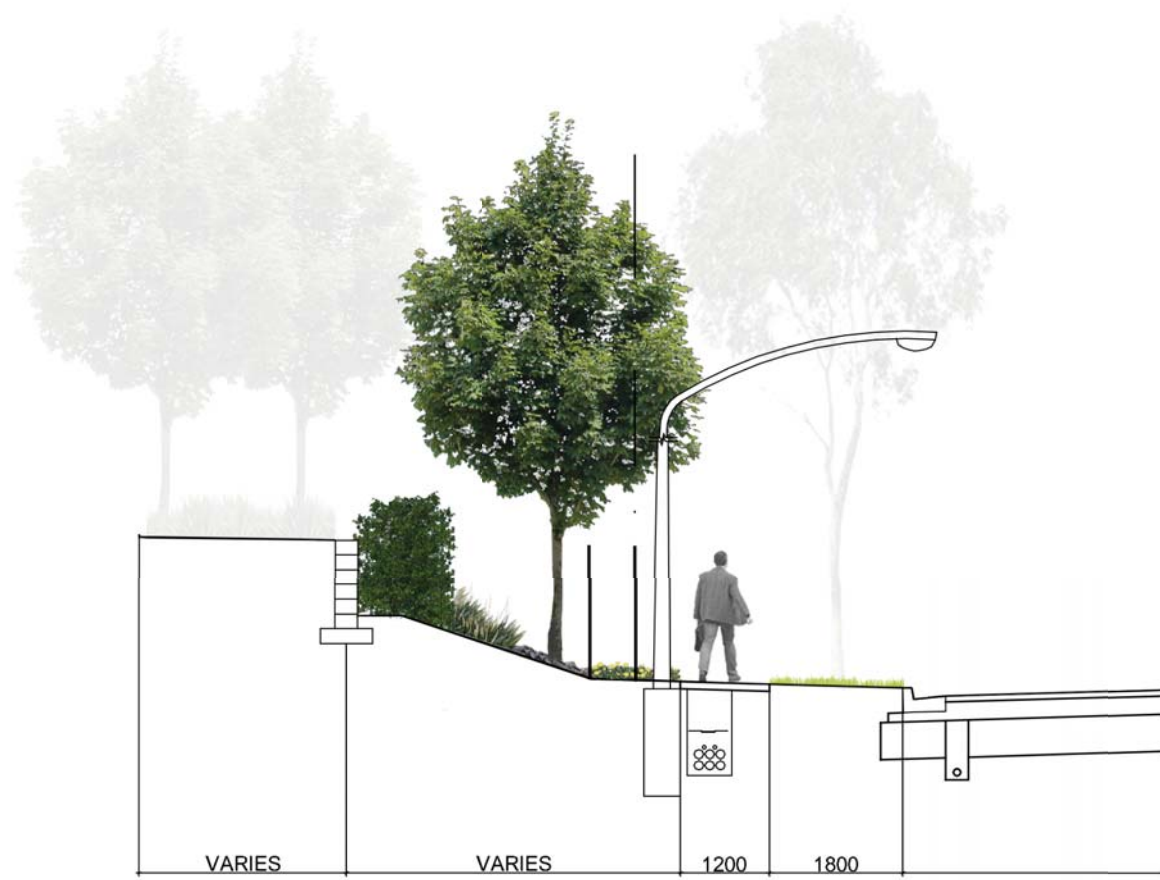


# Lot Landscaping - Precinct 1

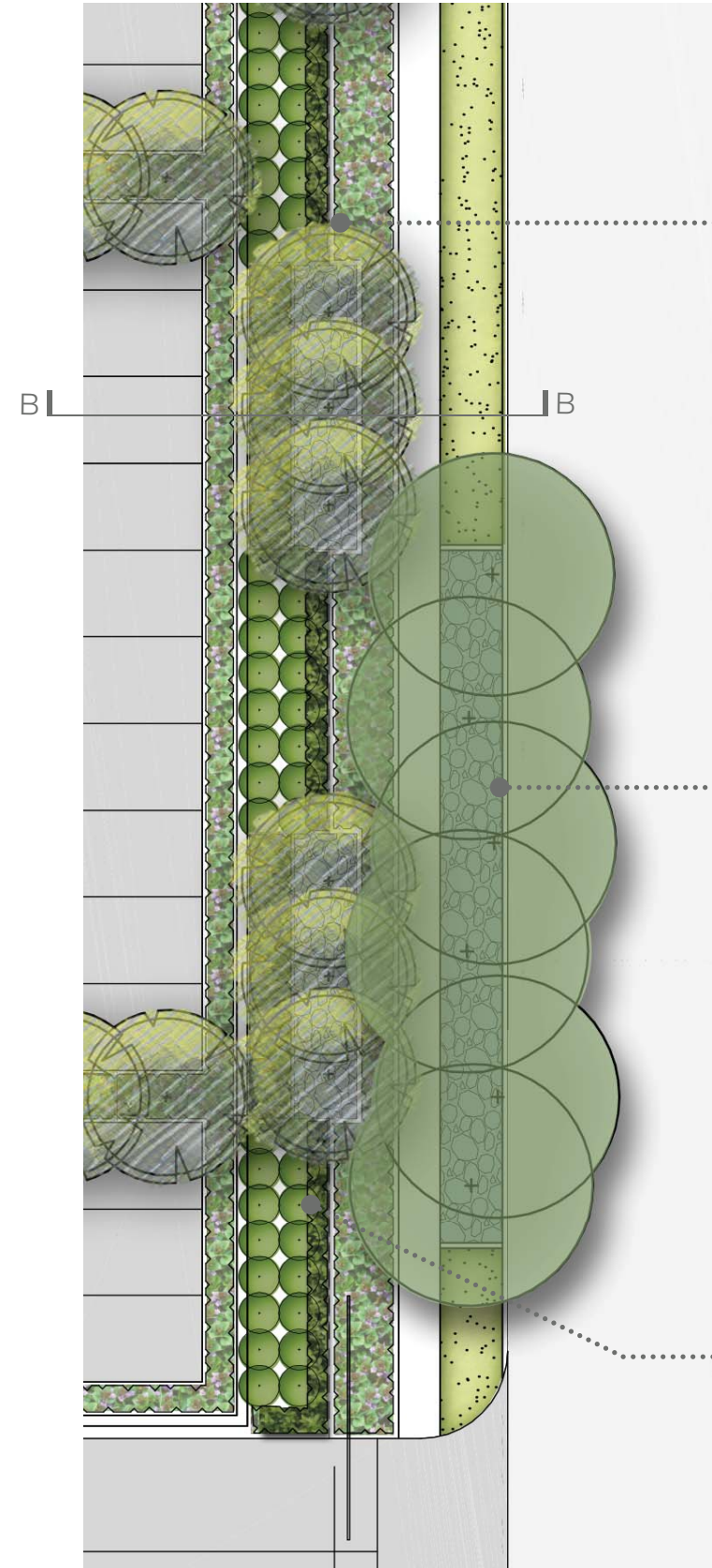
Primary Presentational Frontage - Typical Landscape Detail Plan



Road 2 Presentational Frontage - Typical Landscape Detail Plan



SECTION B | SCALE 1:100



PLAN | SCALE 1:200



Mass planted grasses



Ballast bays



Native hedges

# Lot Landscaping - Precinct 1

## Planting Palette

Botanical Name	Common Name	Mature Height (m.)	Mature Spread (m.)	Pot Size
<b>Trees</b>				
<i>Angophora floribunda</i>	Rough-barked Apple	20	8	75L
<i>Cupaniopsis anacardioides</i>	Tuckeroo	15	8	75L
<i>Corymbia maculata</i>	Spotted Gum	15	7	75L
<i>Eucalyptus amplifolia</i>	Cabbage Gum	25	8	75L
<i>Eucalyptus crebra</i>	Narrow Leaved Ironbark	15	6	25L
<i>Eucalyptus moluccana</i>	Grey Box	20	8	25L
<i>Eucalyptus tereticornis</i>	Forest Red Gum	30	10	75L
<i>Pyrus calleryana</i>	Callery Pear	11	7	75L
<i>Tristaniopsis laurina</i> 'Luscious'	Water Gum	9	8	75L
<i>Melaleuca decora</i>	White Feather Honeymyrtle	7	3	25L
<i>Melaleuca nodosa</i>	Ball Honey-myrtle	4	2.5	25L
<i>Melaleuca styphelioides</i>	Prickly Leaved Paperbark	7	3	75L
<b>Shrubs</b>				
<i>Acacia falcata</i>	Sickle Wattle	4	2	300mm
<i>Callistemon 'Endeavour'</i>	Bottlebrush	3	3	300mm
<i>Kunzea ambigua</i>	Tick Bush	2.5	2.5	300mm
<i>Pittosporum 'Miss Muffet'</i>	Dwarf Pittosporum	1	1.5	300mm
<i>Viburnum odoratissimum</i>	Sweet Viburnum	5	3.5	300mm
<i>Westringia glabra</i>	Violet Westringia	1	1	300mm
<b>Accent Species</b>				
<i>Phormium tenax 'Evening Glow'</i>	NZ Flax Lily	1.5	2	300mm
<i>Phormium tenax 'Purpurea'</i>	Purple NZ Flax	1.5	1	300mm
<b>Groundcovers and Grasses</b>				
<i>Dianella caerulea 'Breeze'</i>	Blue Flax Lily	0.4	0.4	150mm
<i>Hardenbergia violacea</i>	Happy Wanderer Native Sarsparilla	2.5	2.5	150mm
<i>Hibbertia scandens</i>	Snake Vine	0.2	2	150mm
<i>Lomandra longifolia</i>	Mat Rush	1	0.6	150mm
<i>Lomandra longifolia 'Tanika'</i>	Matt Rush Grass	0.7	0.6	150mm
<i>Myoporum parvifolium</i>	Creeping Boobialla	0.2	1.5	150mm
<i>Pennisetum 'Nafray'</i>	Nafray	0.8	0.5	150mm
<i>Poa labillardieri</i>	Tussock Grass	0.8	0.5	150mm
<i>Themeda australis</i>	Kangaroo Grass	0.8	0.3	150mm



*Corymbia maculata*



*Cupaniopsis anacardioides*



*Tristaniopsis laurina* 'Luscious'



*Poa labillardieri*



*Pyrus calleryana*



*Pyrus calleryana*



*Myoporum parvifolium*



*Callistemon 'Endeavour'*



*Dianella caerulea 'Breeze'*



*Phormium tenax 'Purpurea'*



*Pennisetum 'Nafray'*



*Westringia fruticosa*