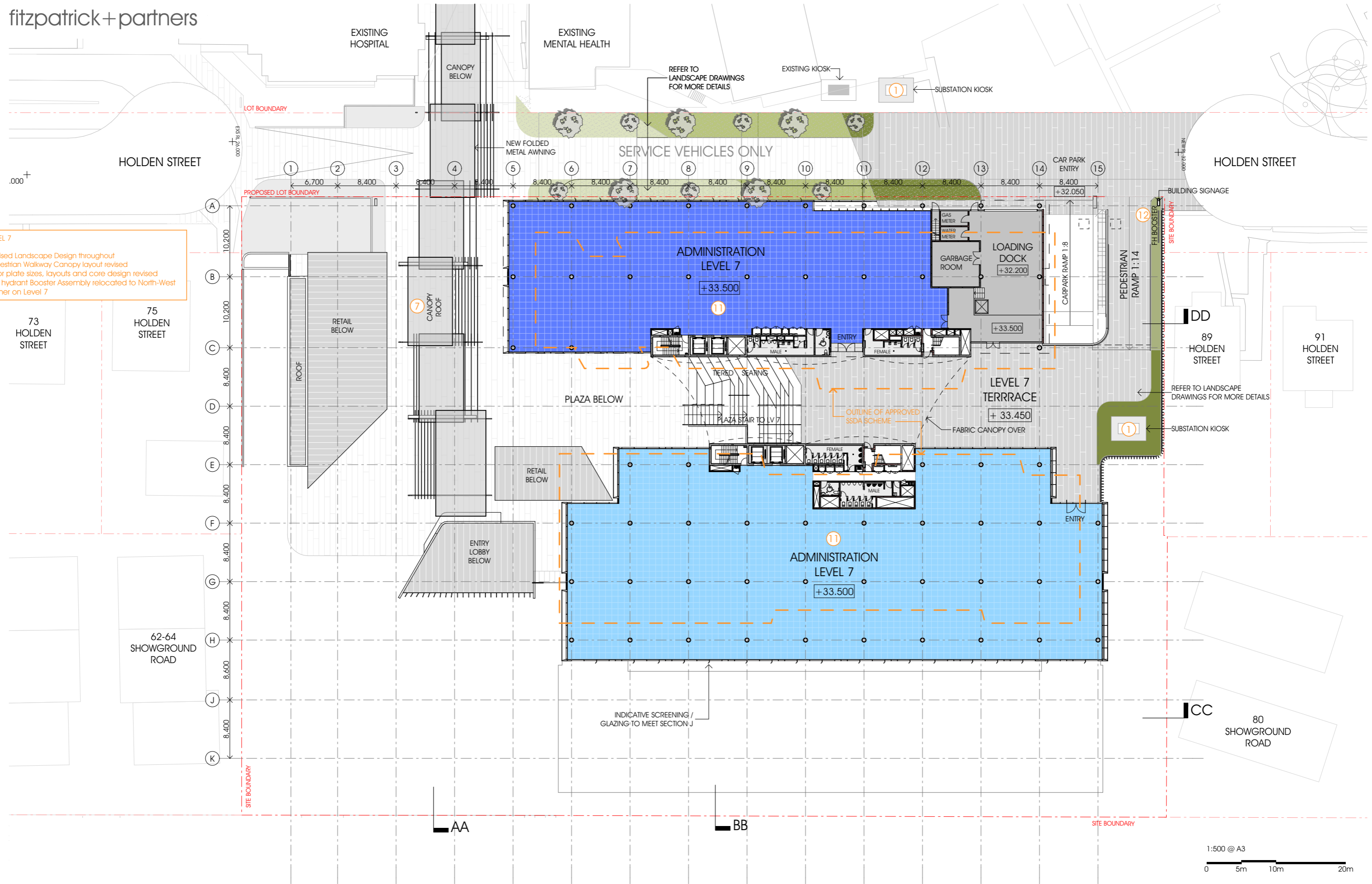


**LEVEL 7**

- \* Revised Landscape Design throughout
- 8 Pedestrian Walkway Canopy layout revised
- 11 Floor plate sizes, layouts and core design revised
- 12 Fire hydrant Booster Assembly relocated to North-West corner on Level 7



Gosford Hospital Redevelopment

Section 96 Submission

This drawing is issued upon the condition it is not copied, reproduced, retained or disclosed to any unauthorised person either wholly or in part without prior consent in writing of fitzpatrick+partners. Do not scale drawings. Check dimensions before commencing work.

Drawings show design intent only. Shop drawings are to be provided for approval prior to construction or manufacture. Inconsistencies are to be reported to fitzpatrick + partners.



PROJECT NORTH  
SCALE @ A3  
1:500  
PRINT DATE  
20/07/2016

fitzpatrick+partners  
© Copyright 2016  
PJ + 61 2 8274 8200 WJ www.fitzpatrickpartners.com

DRAWING  
LEVEL 7

PROJECT NO.	DRAWING NO.	ISSUE
21516	DA-12	A