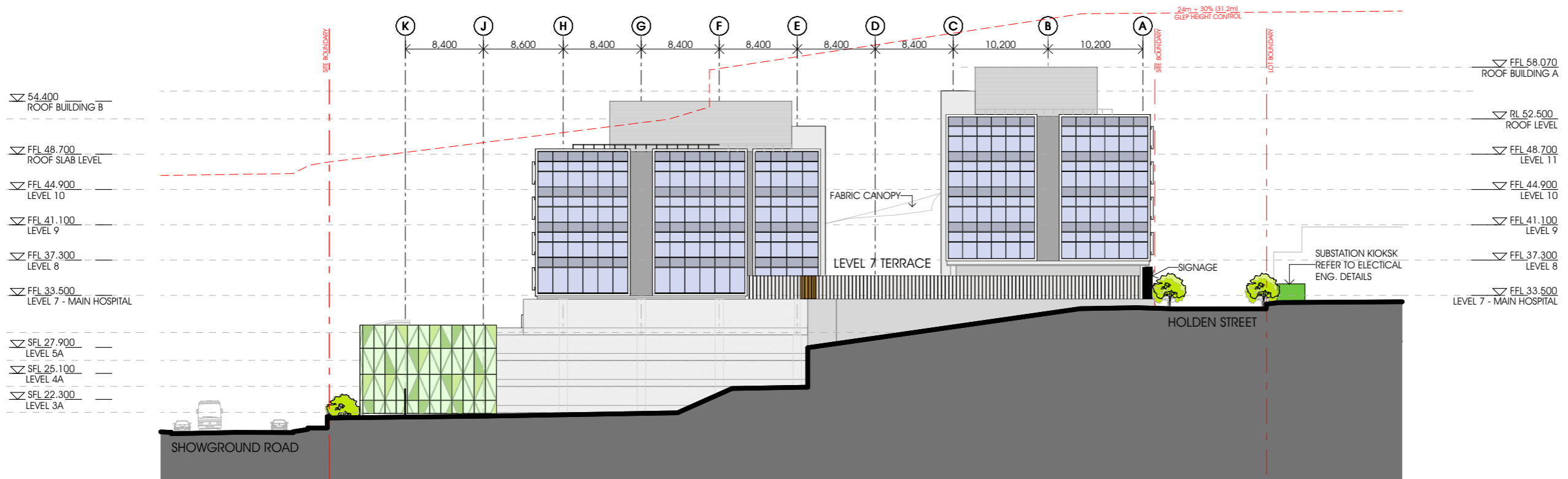


SOUTHERN ELEVATION



NORTHERN ELEVATION

- * Overall height of Buildings A & B reduced slightly
- * Car park floor-to-floor height reduced
- * Side setbacks introduced to car park to allow for natural ventilation
- * Holden Street Pedestrian Ramp deleted
- * Floor-to-floor heights reduced
- * Facade expression, sun shading and panellisation revised
- * Roof Plant enclosure size and layout revised

Gosford Hospital Redevelopment

Section 96 Submission

This drawing is issued upon the condition it is not copied, reproduced, retained or disclosed to any unauthorised person either wholly or in part without prior consent in writing of fitzpatrick+partners.
Do not scale drawings. Check dimensions before commencing work.

Drawings show design intent only. Shop drawings are to be provided for approval prior to construction or manufacture. Inconsistencies are to be reported to fitzpatrick+partners.



PROJECT NORTH SCALE @ A3 PRINT DATE
1:500 20/07/2016

fitzpatrick+partners
© Copyright 2016
PJ + 61 2 8274 8200 WJ www.fitzpatrickpartners.com

DRAWING
ELEVATIONS - 1 & 3

PROJECT NO.	DRAWING NO.	ISSUE
21516	DA-20	A