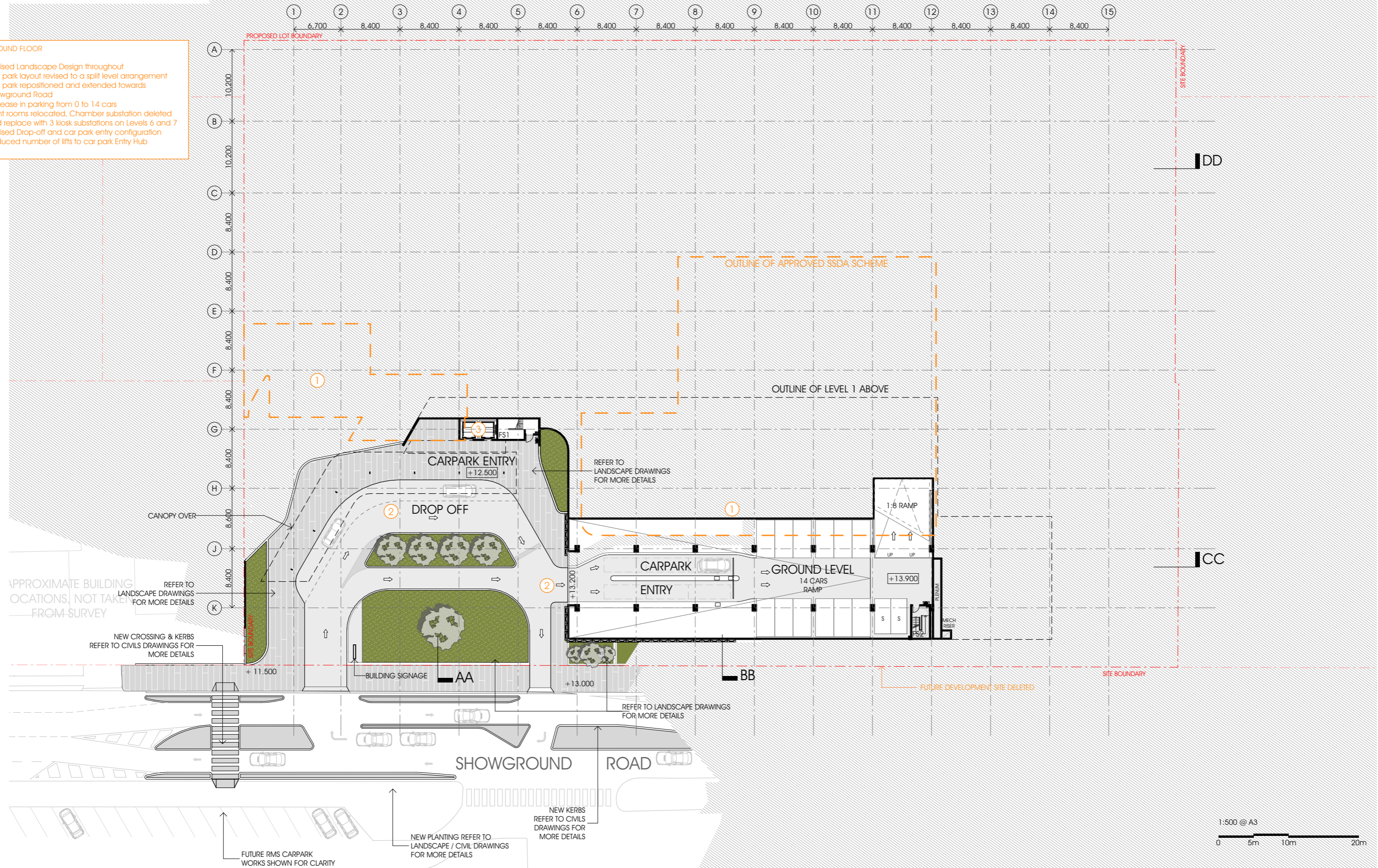


- GROUND FLOOR**
- * Revised Landscape Design throughout
 - * Car park layout revised to a split level arrangement
 - * Car park repositioned and extended towards Showground Road
 - * Increase in parking from 0 to 14 cars
- 1 Plant rooms relocated, Chamber substation deleted and replace with 3 kiosk substations on Levels 6 and 7
 - 2 Revised Drop-off and car park entry configuration
 - 3 Reduced number of lifts to car park Entry Hub



Gosford Hospital Redevelopment

Section 96 Submission

This drawing is issued upon the condition it is not copied, reproduced, retained or disclosed to any unauthorised person either wholly or in part without prior consent in writing of fitzpatrick+partners.
Do not scale drawings. Check dimensions before commencing work.

Drawings show design intent only. Shop drawings are to be provided for approval prior to construction or manufacture. Inconsistencies are to be reported to fitzpatrick + partners.



PROJECT NORTH
SCALE @ A3
1:500
PRINT DATE
20/07/2016

fitzpatrick+partners
© Copyright 2016
PJ + 61 2 8274 8200 WJ www.fitzpatrickpartners.com

DRAWING
GROUND LEVEL

PROJECT NO.	DRAWING NO.	ISSUE
21516	DA-05	A