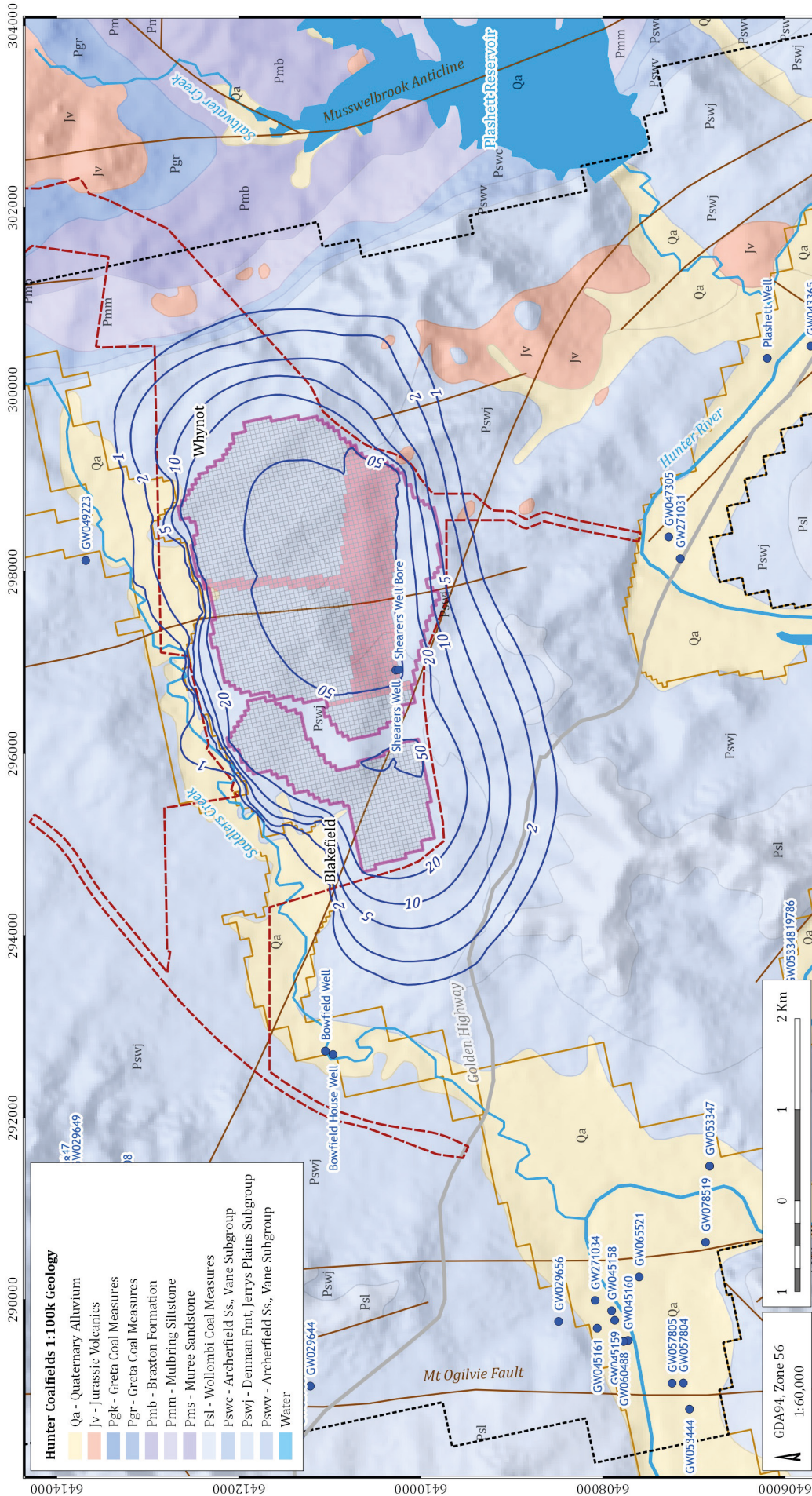


Drayton South Coal Project (G1725)



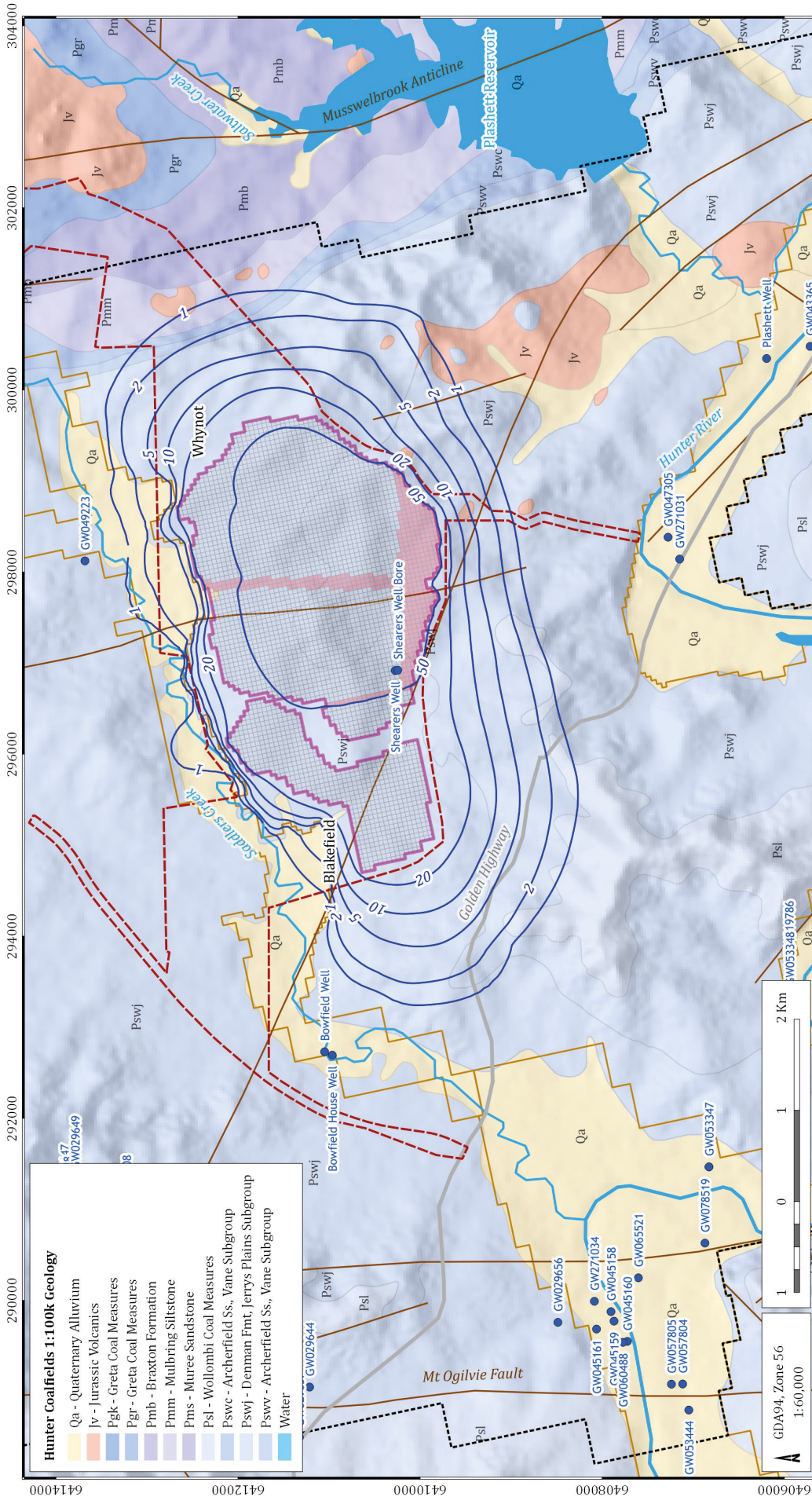
**Predicted drawdown
 Year 6 (2021)
 Alluvium / Regolith**



Drayton South Coal Project (G1725)



**Predicted drawdown
 Year 12 (2027)
 Alluvium / Regolith**



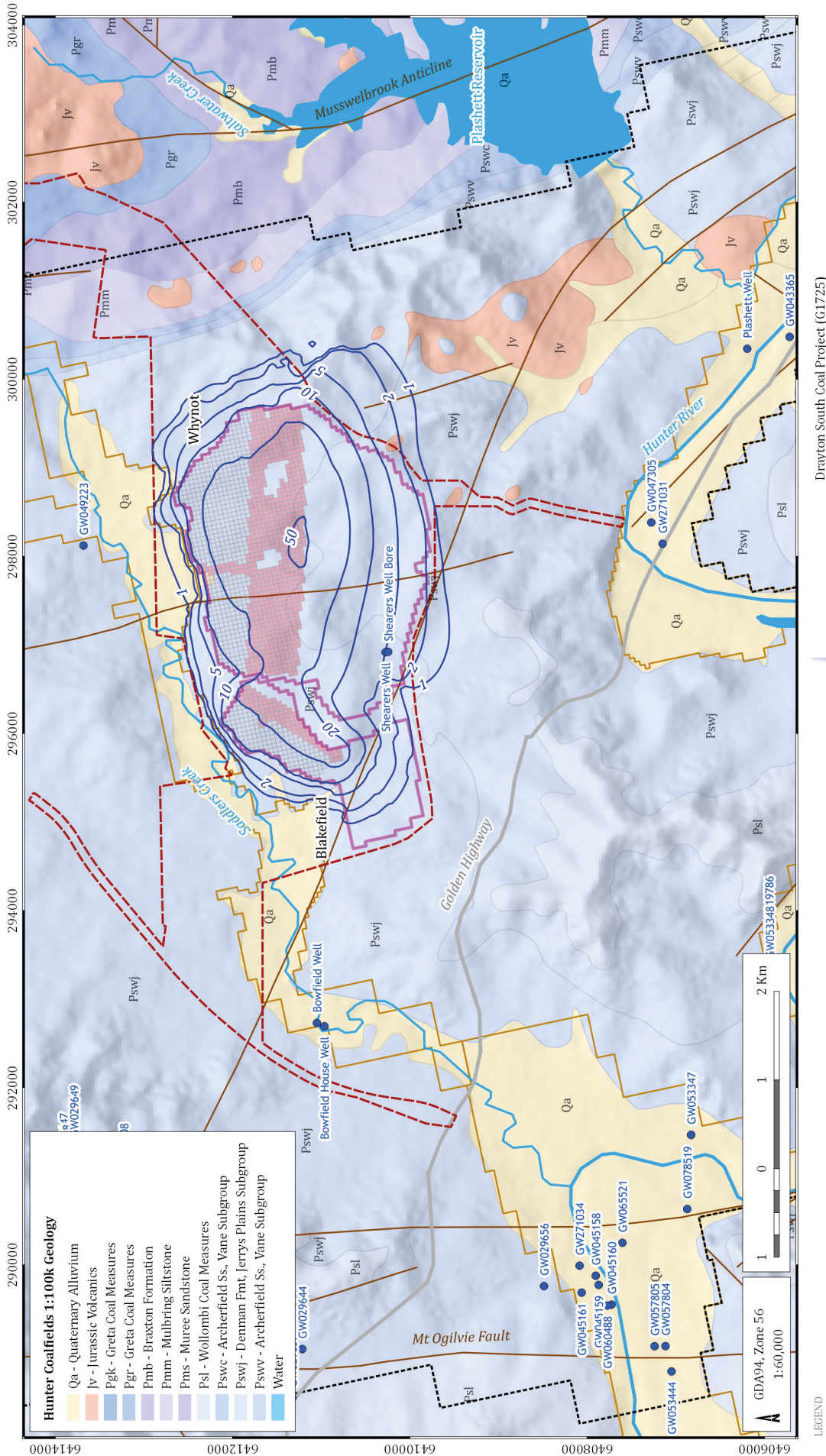
Drayton South Coal Project (G1725)

AGE
GROUNDWATER & ENVIRONMENTAL CONSULTANTS

DATE: 18/3/2015
FIGURE NO: 25

Predicted drawdown Year 15 (2030) Alluvium / Regolith

©2015 Australasian Groundwater and Environmental Consultants Pty Ltd (AGEB) - www.ageconsultants.com.au



Hunter Coalfields 1:100k Geology

Qa - Quaternary Alluvium
Jv - Jurassic Volcanics
Pgk - Greta Coal Measures
Pgr - Greta Coal Measures
Pmb - Braxton Formation
Pmm - Mulbring Siltstone
Pms - Muree Sandstone
Psl - Wollombi Coal Measures
Pswc - Archerfield Ss, Vane Subgroup
Pswj - Denman Fmt, Jerrys Plains Subgroup
Pswv - Archerfield Ss, Vane Subgroup
Water

GDA94, Zone 56
1:60,000

0 1 2 Km

- LEGEND**
- Project Boundary
 - Mine Layout
 - Model active grid boundary
 - Model alluvium outline
 - Fault / Fold
 - NOW registered bore
 - Water area
 - River
 - Creek
 - Major road
 - Active mine pit
 - Backfill spoil
 - Predicted drawdown contour (m)

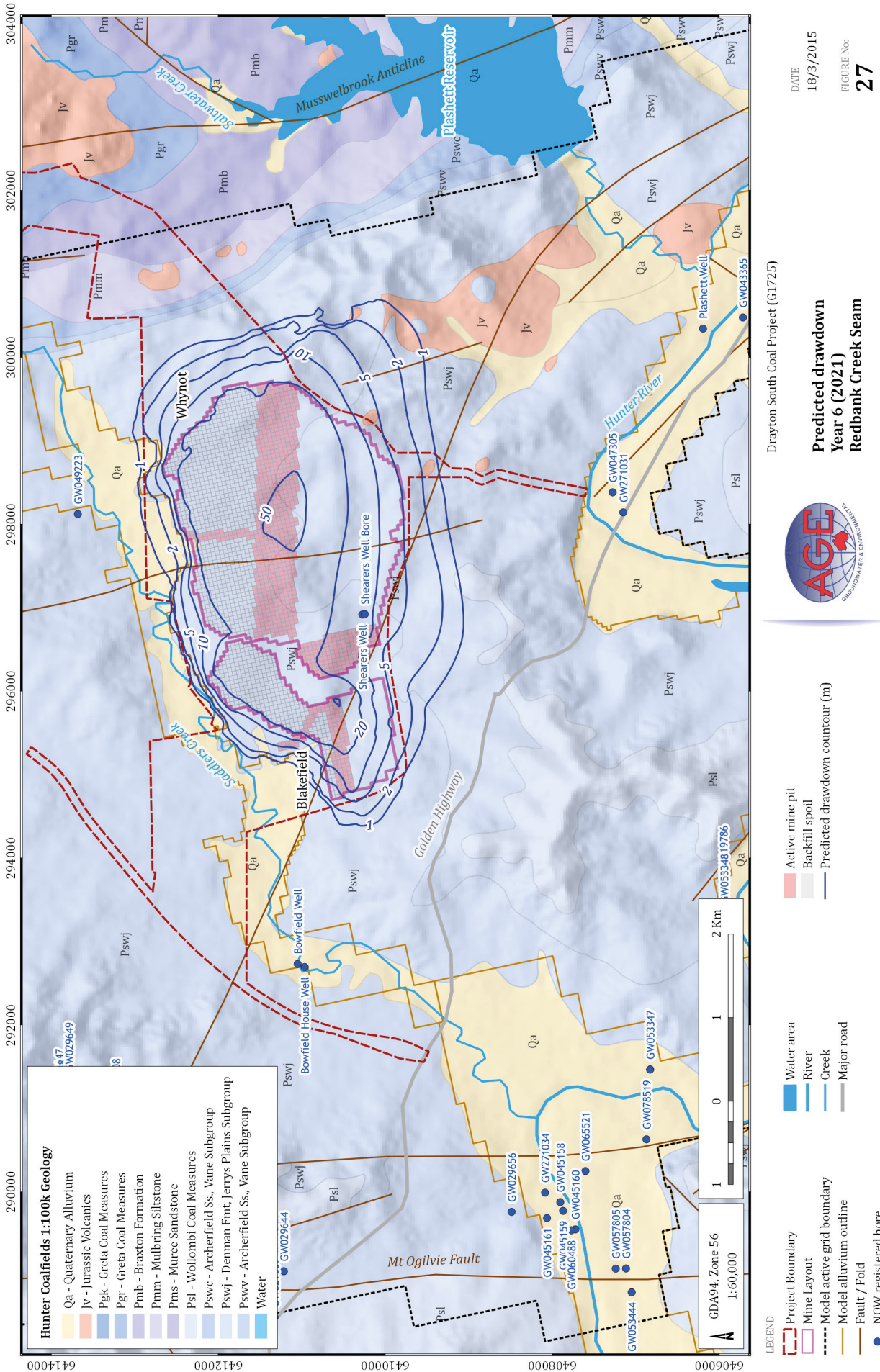


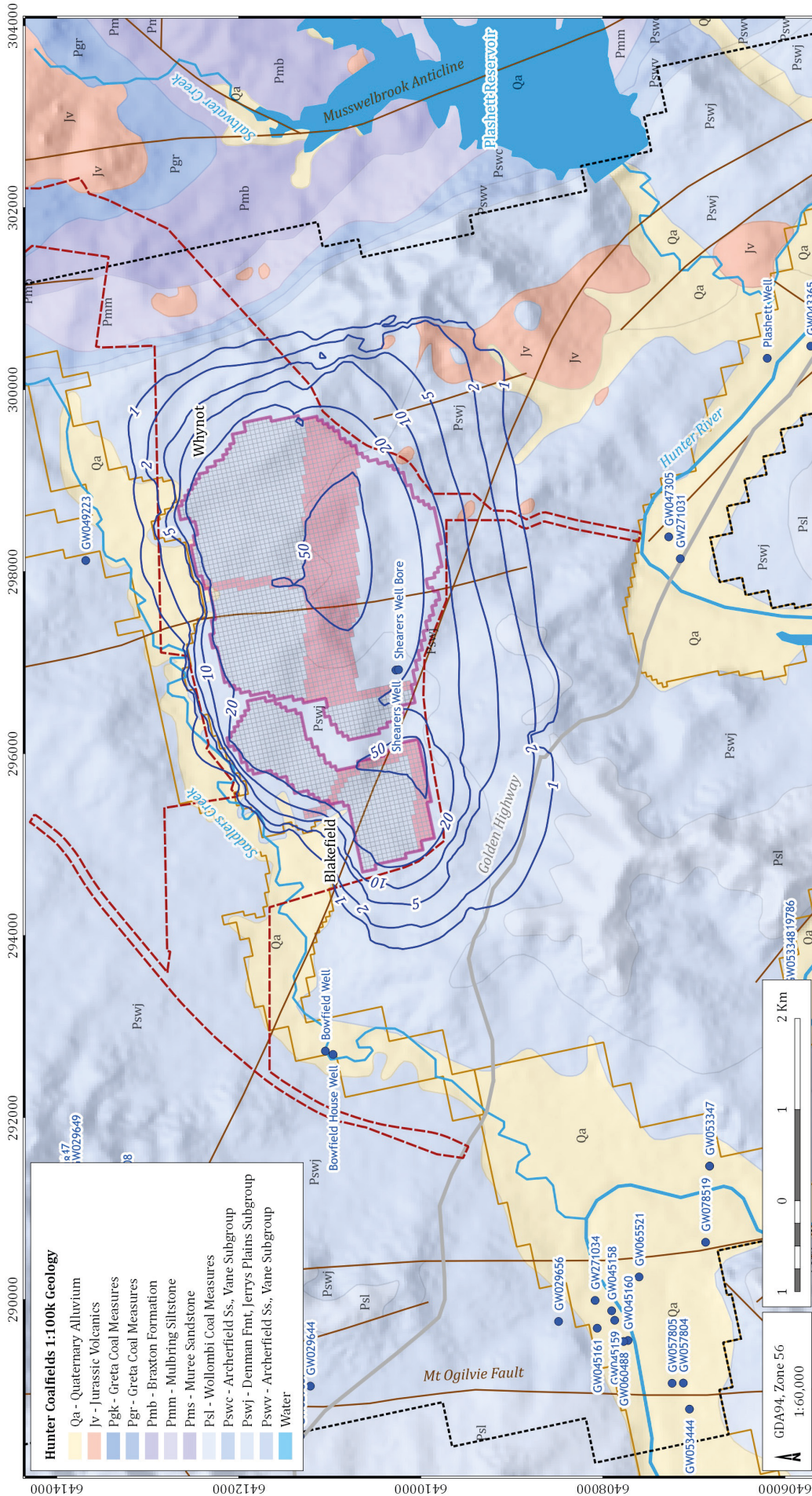
**Predicted drawdown
Year 4 (2019)
Redbank Creek Seam**

Drayton South Coal Project (G1725)

DATE
18/3/2015

FIGURE No:
26





Hunter Coalfields 1:100k Geology

Qa - Quaternary Alluvium
Jv - Jurassic Volcanics
Pgk - Greta Coal Measures
Pgr - Greta Coal Measures
Pmb - Braxton Formation
Pmm - Mulbring Siltstone
Pms - Muree Sandstone
Psl - Wollombi Coal Measures
Pswc - Archerfield Ss, Vane Subgroup
Pswj - Denman Fmt, Jerrys Plains Subgroup
Pswv - Archerfield Ss, Vane Subgroup
Water

Drayton South Coal Project (G1725)

Predicted drawdown Year 9 (2024) Redbank Creek Seam

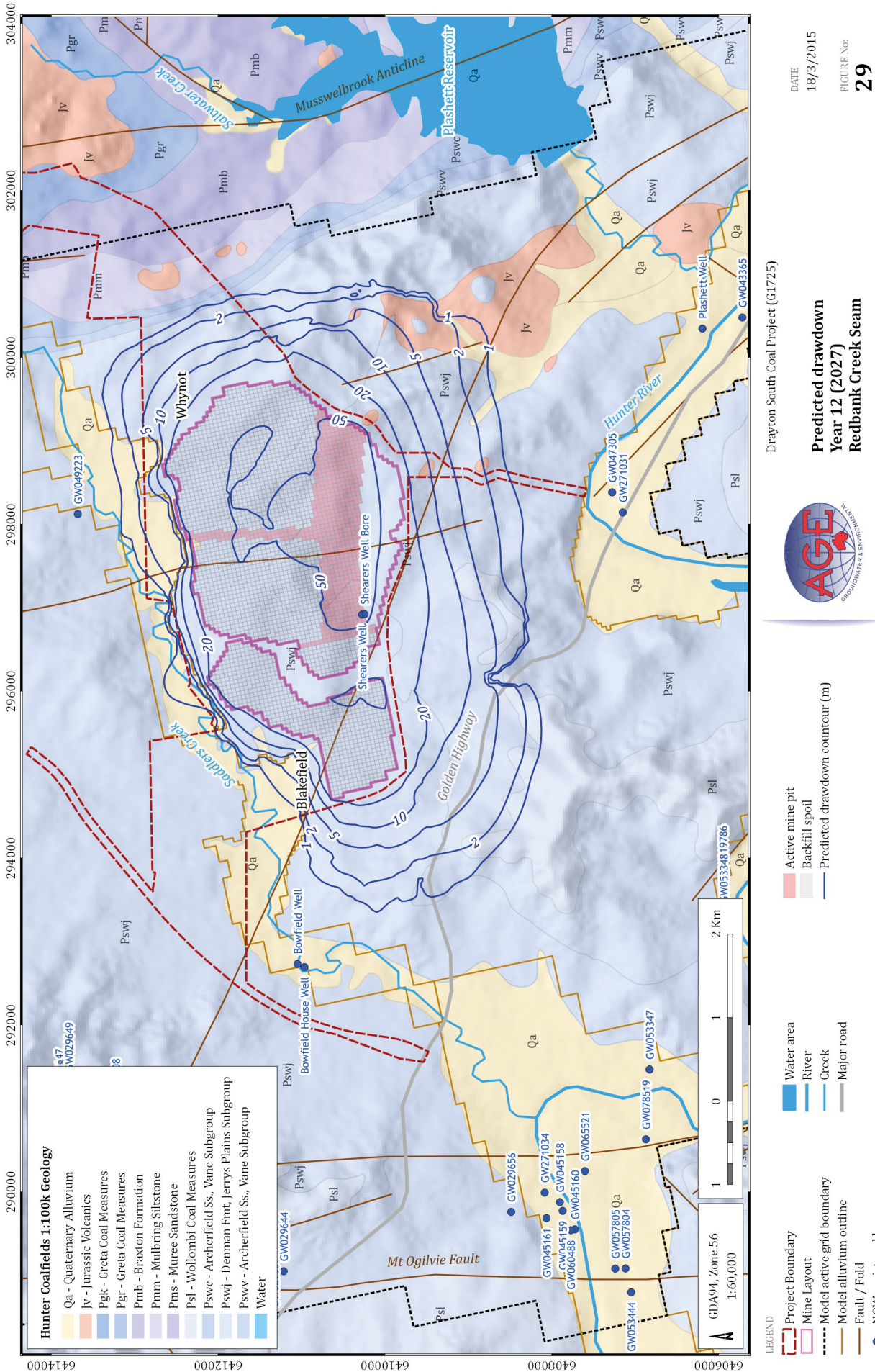
DATE: 18/3/2015
FIGURE No: 28

LEGEND

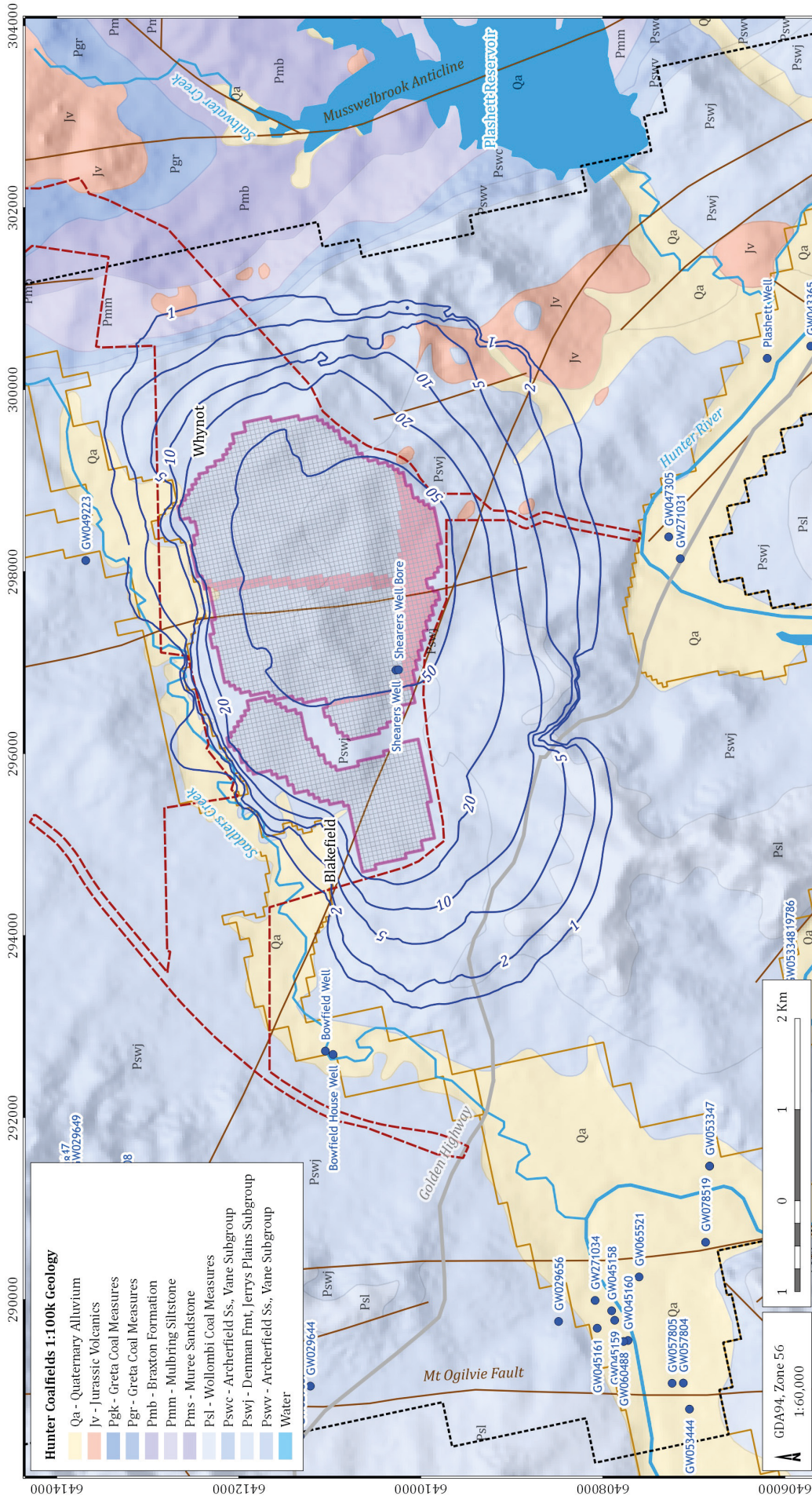
- Project Boundary
- Mine Layout
- Model active grid boundary
- Model alluvium outline
- Fault / Fold
- NOW registered bore
- Water area
- River
- Creek
- Major road
- Active mine pit
- Backfill spoil
- Predicted drawdown contour (m)

GDA94, Zone 56
1:60,000

0 1 2 Km



©2015 Australasian Groundwater and Environmental Consultants Pty Ltd (AG&E) - www.agneconsultants.com.au



Hunter Coalfields 1:100k Geology

Qa - Quaternary Alluvium
Jv - Jurassic Volcanics
Pgk - Greta Coal Measures
Pgr - Greta Coal Measures
Pmb - Braxton Formation
Pmm - Mulbring Siltstone
Pms - Muree Sandstone
Psl - Wollombi Coal Measures
Pswc - Archerfield Ss, Vane Subgroup
Pswj - Denman Fmt, Jerrys Plains Subgroup
Pswv - Archerfield Ss, Vane Subgroup
Water

Drayton South Coal Project (G1725)

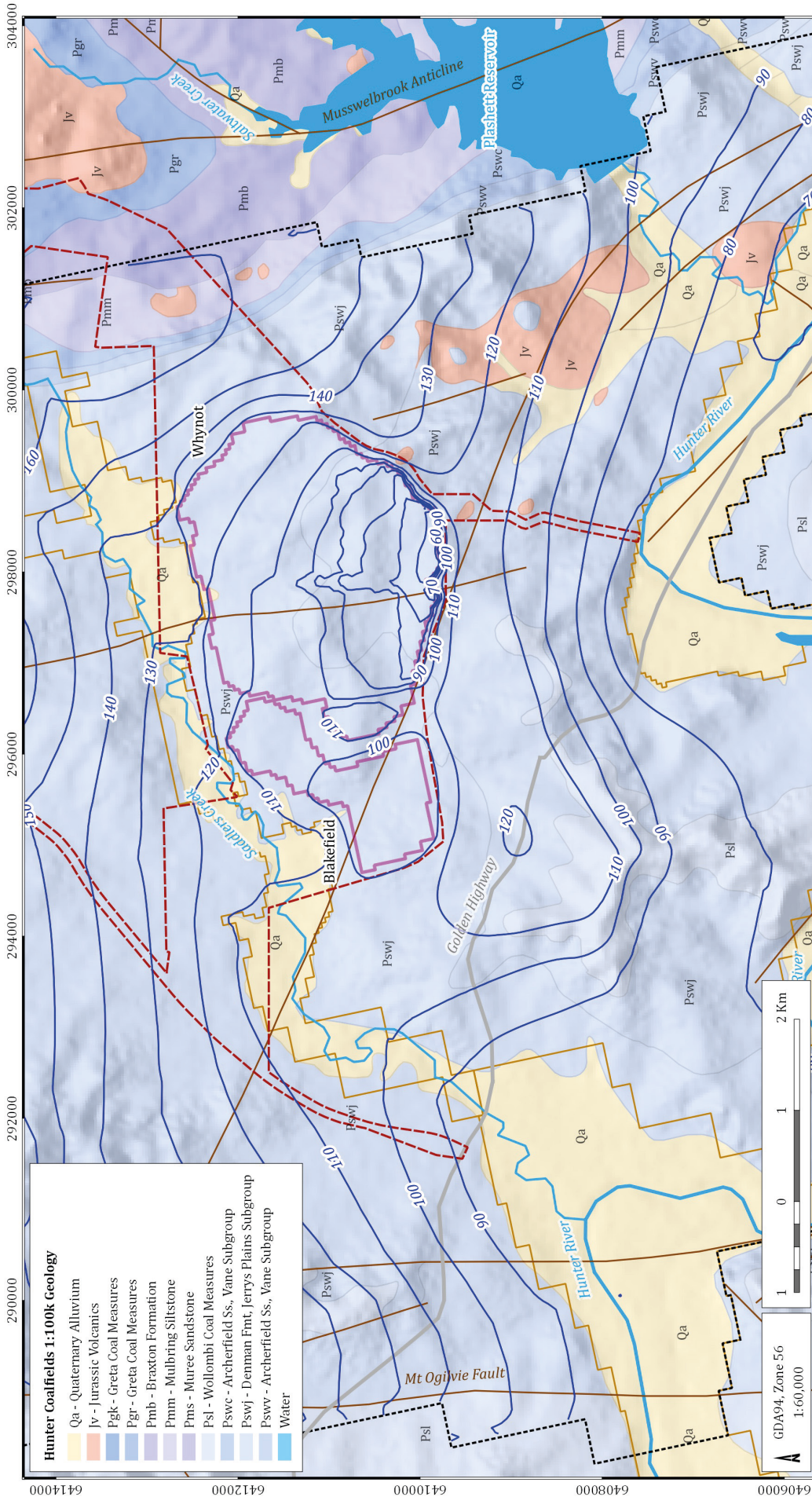
Predicted drawdown Year 15 (2030) Redbank Creek Seam

DATE: 18/3/2015
FIGURE No: 30

LEGEND

- Project Boundary
- Mine Layout
- Model active grid boundary
- Model alluvium outline
- Fault / Fold
- NOW registered bore
- Water area
- River
- Creek
- Major road
- Active mine pit
- Backfill spoil
- Predicted drawdown contour (m)

Scale: 1:60,000
Scale bar: 0, 1, 2 Km



Hunter Coalfields 1:100k Geology

Qa - Quaternary Alluvium
Jv - Jurassic Volcanics
Pgk - Greta Coal Measures
Pgr - Greta Coal Measures
Pmb - Braxton Formation
Pmm - Mulbring Siltstone
Pms - Muree Sandstone
Psl - Wollombi Coal Measures
Pswc - Archerfield Ss., Vane Subgroup
Pswj - Denman Fmt, Jerrys Plains Subgroup
Pswv - Archerfield Ss., Vane Subgroup
Water

DATE: 18/3/2015
 FIGURE NO: 31

Drayton South Coal Project (G1725)

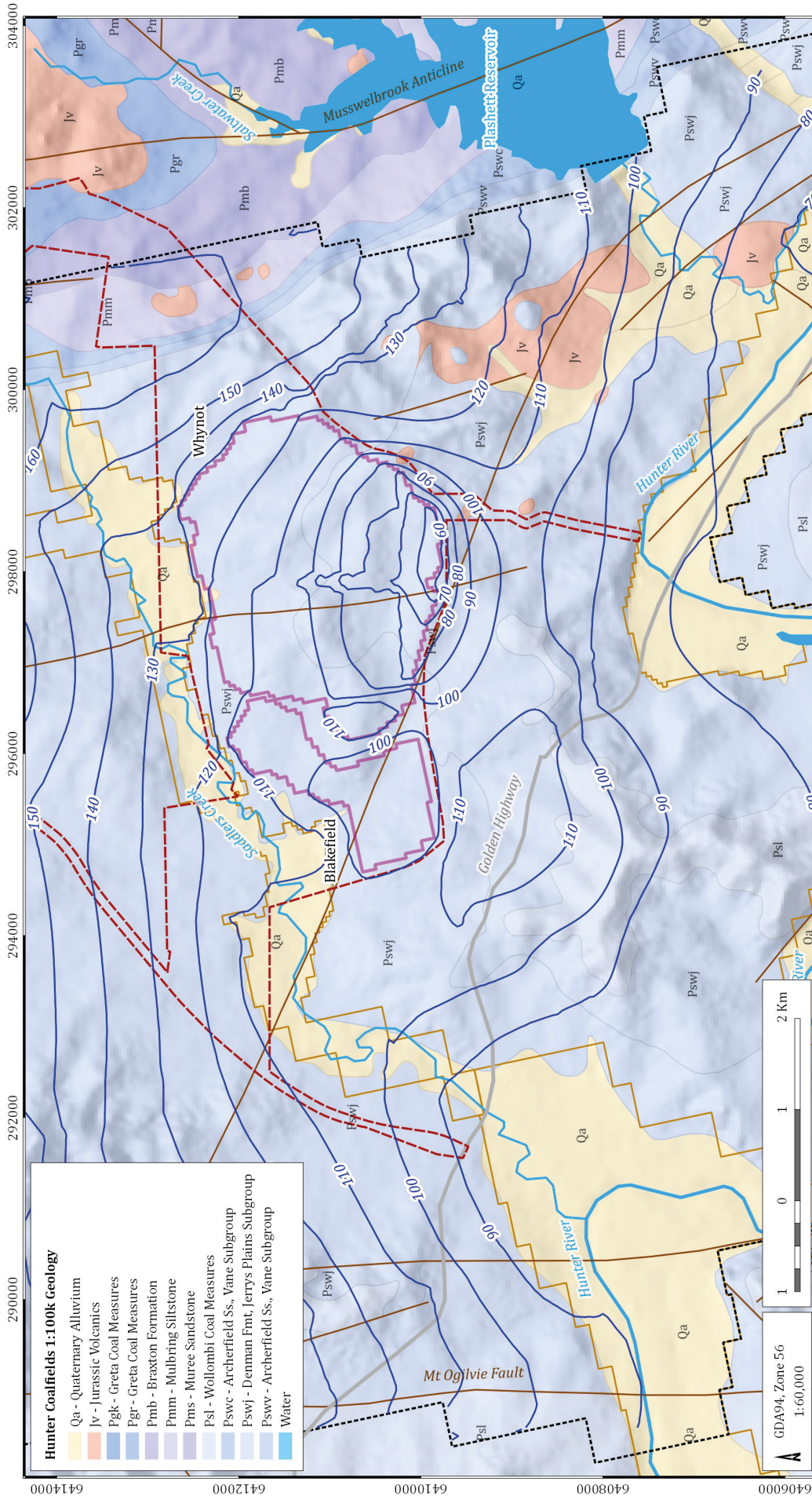
**Heads - end of mining (year 15, 2030)
 Alluvium / Regolith**

LEGEND

- Project Boundary
- Mine Layout
- Model active grid boundary
- Model alluvium outline
- Fault / Fold
- Water area
- River
- Creek
- Major road
- Groundwater head (mAHD, 10m interval)

GDA94, Zone 56
 1:60,000
 0 1 2 Km

©2015 Australasian Groundwater and Environmental Consultants Pty Ltd (AGE) - www.ageconsultants.com.au



Drayton South Coal Project (G1725)

DATE
18/3/2015

Heads - end of mining (year 15, 2030)
Redbank Creek Seam

FIGURE NO:
32

- LEGEND**
- Project Boundary
 - Mine Layout
 - Model active grid boundary
 - Model alluvium outline
 - Fault / Fold
 - Water area
 - River
 - Creek
 - Major road
 - Groundwater head (mAHD, 10m interval)