
Previous Application Consultation Materials



APRIL 2011

COMMUNITY NEWSLETTER 1

This community newsletter provides an introduction to the Drayton South Coal Project for the local community and interested stakeholders. It aims to provide relevant information with regard to the requirement for the Project, what it involves, the approvals process that needs to be followed and how the community can be involved in the process.

DRAYTON SOUTH COAL PROJECT



INTRODUCTION

Drayton Mine commenced production in 1983 and currently holds Project Approval (PA) 06_0202 to mine at a maximum of 8 Million tonnes per annum (Mtpa) of Run-of-Mine (ROM) coal. Drayton Mine's Project Approval expires in 2017; however, based on current production schedules the coal resources at Drayton Mine are expected to be exhausted by 2015 at which time the operation will have to close.

The Drayton South Coal Project (the Project) will allow for the continuation of mining at Drayton Mine by the development of open cut and highwall mining operations within the Drayton South area (Drayton South) while continuing to utilise the existing infrastructure and equipment from Drayton Mine. Collectively the Project encompasses Drayton Mine, Drayton South and the transport corridor which will link the two operational areas (see Figure 1).

The Project is located approximately 10 km north-west of the village of Jerrys Plains and approximately 13 km south of the township of Muswellbrook in the Upper Hunter Valley of NSW.

The Project will extend the life of Drayton Mine ensuring the continuity of employment for its workforce, the ongoing utilisation of its infrastructure and the orderly rehabilitation of Drayton Mine's completed mine areas.

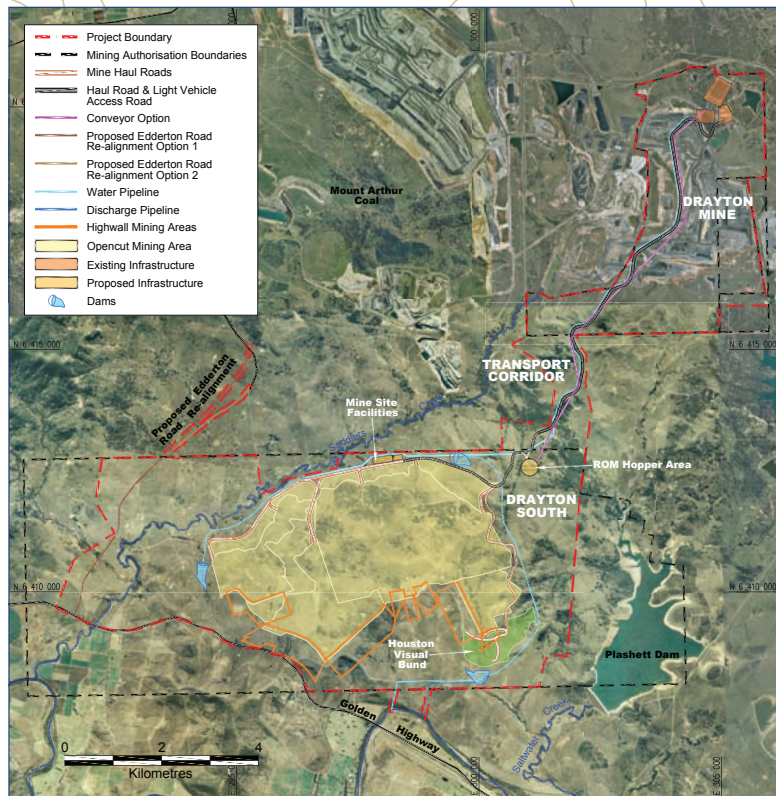


FIGURE 1: PROJECT LAYOUT

THE PROJECT

Anglo American's Metallurgical Coal business (Anglo American) plans to develop the Project to allow for the extraction of coal by both open cut and highwall mining operations to the south of the existing Drayton Mine within Exploration Licence 5460. The Project comprises:

- The extraction of up to 7 Mtpa of ROM coal over a period of 26 years;
- The utilisation of the existing Drayton Mine workforce and equipment fleet (with an addition of a highwall miner and coal haulage fleet);
- The use of Drayton Mine's existing voids for rejects and tailings disposal and water storage to allow for the optimisation of the Drayton Mine final landform;
- The utilisation of the existing Drayton Mine infrastructure including the coal handling and preparation plant, rail loop and associated loadout infrastructure, workshops, bath houses and administration offices;
- The construction of a transport corridor between Drayton South and Drayton Mine;
- The utilisation of the Antiene Rail Spur off the Main Northern Railway to transport product coal to the Port of Newcastle for export;
- The realignment of part of Edderton Road and its intersection with the Golden Highway; and
- The installation of water management and power reticulation infrastructure for Drayton South.

The general layout of the Project is illustrated in **Figure 1**.

Drayton Mine will continue to operate under and in accordance with the existing Project Approval 06_0202 and there will be a period when Drayton Mine and Drayton South operate concurrently.

PLANNING APPROVALS PROCESS AND ENVIRONMENTAL ASSESSMENT

Anglo American submitted an application for Project Approval under Part 3A of the *Environmental Planning & Assessment Act 1979* in early March 2011. As a component of this Application, a Preliminary Environmental Assessment (PEA) was prepared and submitted to the Department of Planning (DoP). A planning focus meeting is planned for late April 2011 after which DoP will issue the Environmental Assessment Requirements that will need to be addressed within the Environmental Assessment (EA) for the Project.

Anglo American is currently preparing a detailed EA to be submitted as part of its' Application for Project Approval. This work is being undertaken by Hansen Bailey, a specialist environmental consultancy firm based in Singleton. Specialist technical studies that are currently being undertaken for inclusion in the EA include:

- Aboriginal and Non-Aboriginal Heritage;
- Acoustics (Noise and Blasting);
- Air Quality and Greenhouse Gas;
- Ecology;
- Economics;
- Geochemistry;
- Social Impact Assessment;
- Soils and Land Capability;
- Surface and Groundwater;
- Traffic and Transport; and
- Visual.

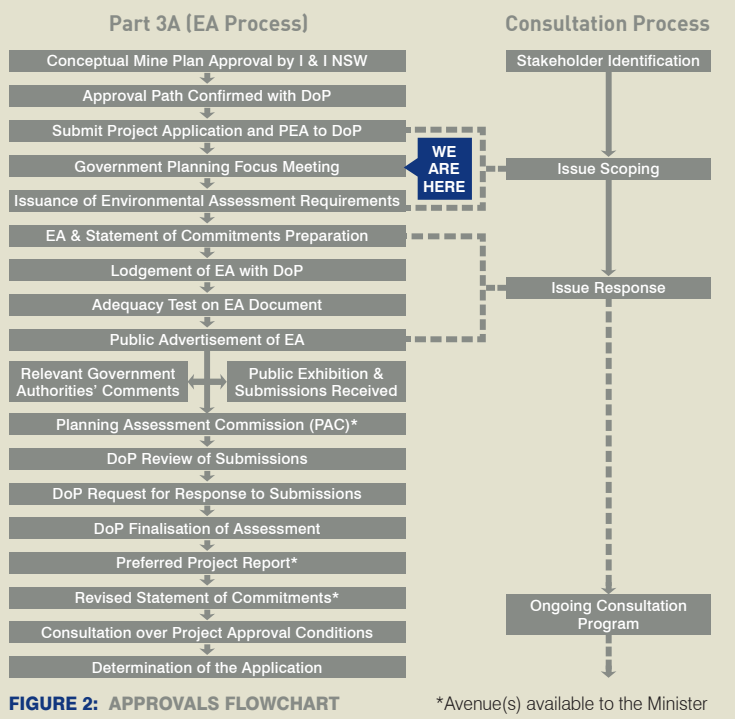


FIGURE 2: APPROVALS FLOWCHART

STAKEHOLDER CONSULTATION

Anglo American is committed to striving for best practice environmental management and establishing and maintaining open two-way communication with its neighbours and other stakeholders.

Preliminary consultation has been undertaken with various authorities including: DoP, Department of Industry and Investment and the Muswellbrook and Singleton Shire Councils.

Hansen Bailey has been appointed by Anglo American to coordinate an independent community consultation program. Community consultation will include personal visits to adjacent neighbours, regular presentations to the Drayton Community Consultative Committee and the distribution of regular newsletter updates to all interested parties.

The main purpose of the community consultation program is to determine the community's views on the Project, so that they can be carefully considered in the planning approvals process. The best way to stay informed or learn more about the Project is to register your interest by contacting Hansen Bailey. **Figure 2** illustrates the process by which Anglo American will consult with the community during the approvals process for the Project.

WHERE TO FROM HERE?

Anglo American will continue to progress the environmental and community assessment activities required as part of the preparation of the EA for the Project. The specialist's EA technical studies are underway and anticipated to be completed by Quarter 3 2011 with plans in place to submit the EA to DoP in Quarter 4 2011.

FURTHER INFORMATION

If you have any questions regarding the Project or the environmental assessment activities please contact:

Daniel Sullivan
Senior Environmental Scientist - Hansen Bailey

Phone: (02) 6575 2000
Email: dsullivan@hansenbailey.com.au

Hansen Bailey
ENVIRONMENTAL CONSULTANTS





**OCTOBER 2011
COMMUNITY NEWSLETTER 2**

This Community Newsletter provides an update on the progress of the Drayton South Coal Project for the local community and any other interested stakeholders. It aims to provide a summary of the findings from the stakeholder consultation process to date, give an update on the preparation of the Environmental Assessment and outline the next key steps for the Project.

DRAYTON SOUTH COAL PROJECT

INTRODUCTION

Anglo American Metallurgical Coal Pty Ltd (Anglo American) submitted an application for Project Approval under Part 3A of the *Environmental Planning & Assessment Act 1979* (EP&A Act) in March 2011 to allow for the continuation of mining at Drayton Mine by the development of open cut and highwall mining operations within the Drayton South mining area. In June 2011, the New South Wales (NSW) Government repealed Part 3A of the EP&A Act; however, the Drayton South Coal Project (the Project) has been granted the benefit of transitional provisions and despite the recent repeal is one to which Part 3A applies.

The Project comprises:

- The extraction of up to 7 Mtpa of Run-of-Mine coal over a period of 26 years;
- The utilisation of the existing Drayton Mine workforce, infrastructure and equipment fleet (with an addition of a highwall miner and coal haulage fleet);
- The use of Drayton Mine's existing voids for rejects and tailings disposal and water storage;
- The construction of a transport corridor between Drayton South and Drayton Mine;
- The utilisation of the Antiene Rail Spur off the Main Northern Railway to transport product coal to the Port of Newcastle for export;
- The realignment of part of Edderton Road and its intersection with the Golden Highway; and
- The installation of water management and power reticulation infrastructure required at Drayton South.

An Environmental Assessment (EA) is currently being prepared by Hansen Bailey Environmental Consultants (Hansen Bailey) to support the application for Project Approval and is likely to be submitted in Quarter 1, 2012.

Details of the Project were initially provided in the Drayton South Coal Project Community Newsletter 1, which was distributed in April 2011.

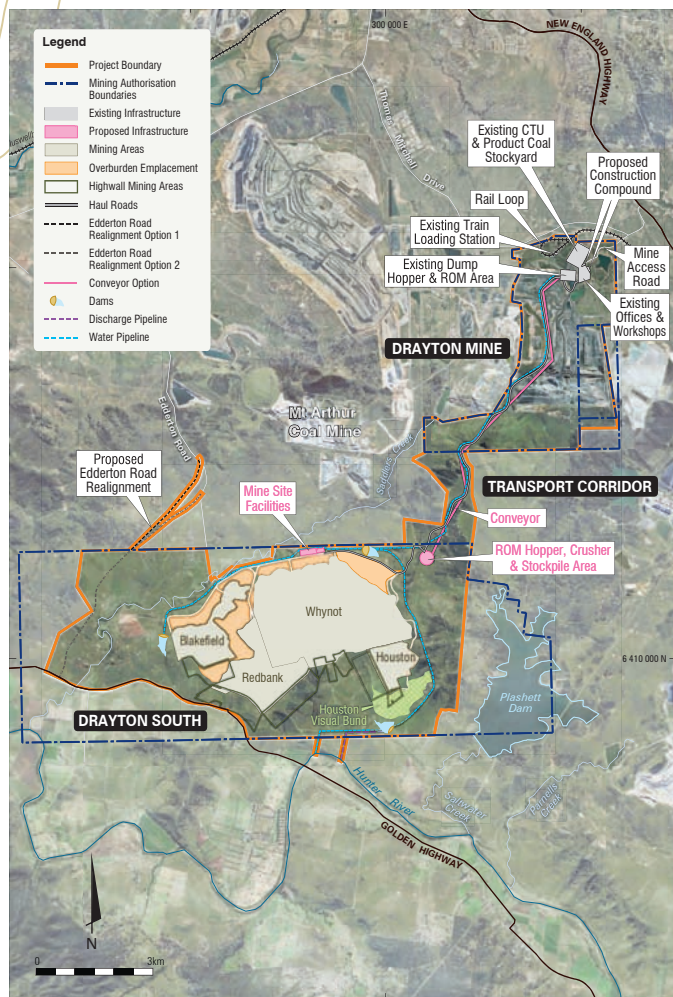


FIGURE 1: PROJECT LAYOUT

STAKEHOLDER ENGAGEMENT

Anglo American remains committed to engaging with our neighbours, the surrounding community and other interested stakeholders to identify and actively respond to all key issues and areas of concern as they are raised. Over the past 12 months Anglo American has directly engaged with each of our immediate neighbours in a range of working group forums and issue scoping meetings.

One on one Project briefings have also been provided to interested residents from Jerrys Plains and the surrounding areas following the distribution of Community Newsletter 1 in April, 2011. Project briefings have also been provided to both Muswellbrook and Singleton Shire Council's, various State and Federal Government agencies and the Drayton Mine Community Consultative Committee (CCC).

The feedback received throughout the stakeholder engagement process to date has been valuable and will assist the overall development of the EA for the Project.

This Community Newsletter provides a summary of the key Project issues raised by stakeholders.

STAKEHOLDER KEY ISSUES AND PROPOSED ACTIONS

A range of environmental and social issues were raised by stakeholders during the consultation process. A summary of the key issues and proposed actions to be considered for the EA are outlined below.

AIR QUALITY / DUST

Dust generation from the Project has been identified as a key concern, particularly in relation to potential impacts on neighbouring residences, thoroughbred horses and livestock health. Stakeholders also asked if Particulate Matter (PM) at a scale of 2.5 microns (PM_{2.5}) will be considered as part of the EA and future air quality monitoring for the Project.

ACTION: Dust impacts will be assessed in the air quality impact assessment for the EA with reference to sensitive receptors. This assessment will be prepared in accordance the NSW government *Approved Methods for the Modelling and Assessment of Air Pollutants* (NSW DEC, 2005) and the National Environmental Protection Measure. The assessment will also comment on the potential for impacts on thoroughbred horses and livestock. Where applicable, mitigation and management measures will be proposed and detailed in the EA to address any potential impacts. It is anticipated that the monitoring program for the Project will include recording of PM_{2.5} dust particulates.

NOISE AND VIBRATION

The impacts of noise and vibration as a result of the Project (including blasting) have been highlighted as a key concern for many stakeholders, particularly in relation to potential impacts on neighbouring residences, thoroughbred horses and livestock.

ACTION: A noise and vibration impact assessment will be prepared for the EA with reference to sensitive receptors. Noise impacts will be conducted in accordance with the NSW government *Industrial Noise Policy (2000)*. The assessment will also comment on the potential for impacts on thoroughbred horses and livestock. With regards to impacts from blasting, the assessment will quantify vibration and overpressure levels. Where applicable, mitigation and management measures will be proposed and detailed in the EA.



VISUAL AMENITY

Visual impacts that the Project may have on the surrounding landscape was raised as a concern, particularly given the Project's close proximity to both the Coolmore and Darley horse studs and the village of Jerrys Plains.

ACTION: Throughout the mine planning process, the Project has been specifically designed and constrained to limit the visual impacts from key vantage points. To assess this, a visual impact assessment will be prepared for the EA, including photo representations of key locations over the life of the Project.

Alternative visual bund locations are also being investigated as part of the EA.

WATER

The potential impacts of the Project on water quality (surface water and groundwater) and the potential for groundwater draw down in the surrounding area was raised as a concern by neighbouring land owners. Another key issue is the Project's requirements to extract water from and discharge water into the Hunter River.

ACTION: A surface water and groundwater impact assessment will be prepared for the EA to understand the water requirements for the Project. Where applicable, mitigation and management measures will be proposed and detailed in the EA. Should the Project discharge into the Hunter River, activities will be undertaken only during flood events in accordance with the Hunter River Salinity Trading Scheme and other applicable guidelines.



TRAFFIC / EDDERTON ROAD REALIGNMENT

The potential increase in traffic utilising the local road network, including the Golden Highway and Edderton Road was raised as a concern. Another key issue is the proposed realignment of Edderton Road and the impacts associated with travel time and road access during the construction phase.

ACTION: In consideration of concerns raised during the operational phase all traffic associated with Drayton South will access the Project via the existing main entrance at Drayton Mine via Thomas Mitchell Drive. During the development of the Edderton Road realignment, construction workers will require limited access off the existing Edderton Road. At no stage will Edderton Road be closed during the construction phase of the Project.

A traffic and transport impact assessment will be prepared for the EA. Where applicable, mitigation and management measures will be proposed and detailed in the EA.

PROPERTY DEVALUATION

Neighbouring stakeholders raised the concern that property values may decrease as a result of the Project and other existing and proposed operations.

ACTION: Property devaluation will be assessed as part of the socio-economic assessment in the EA.

CUMULATIVE IMPACTS

The Project, when combined with other existing and proposed neighbouring mines may cause collective impacts, particularly with regards to dust, noise and visual amenity.

ACTION: Cumulative impacts for each aspect will be addressed in the EA. Where applicable, mitigation and management measures will be proposed and detailed in the EA.

FINAL LANDFORM AND REHABILITATION

Following the completion of mining at Drayton South stakeholders would like to see the area fully rehabilitated with a mixture of natural vegetation and some agricultural areas consistent with the existing environment.

ACTION: Progressive rehabilitation and options for final land use and void management will be outlined in the EA.



ABORIGINAL ARCHAEOLOGY AND CULTURAL HERITAGE

The impact of the Project on Aboriginal archaeology and cultural heritage values was raised as a key concern by some members of the local Aboriginal community.

ACTION: An Aboriginal archaeology and cultural heritage impact assessment will be prepared for the EA in coordination with members of the local Aboriginal community. This assessment will be conducted in accordance with the NSW government *Guidelines for Aboriginal Cultural Heritage Impact Assessment and Community Consultation (2005)* and *Aboriginal Cultural Heritage Consultation Requirements for Proponents (2010)*. Where applicable, mitigation and management measures will be proposed and detailed in the EA. An Aboriginal Heritage Management Plan is proposed for the Project.

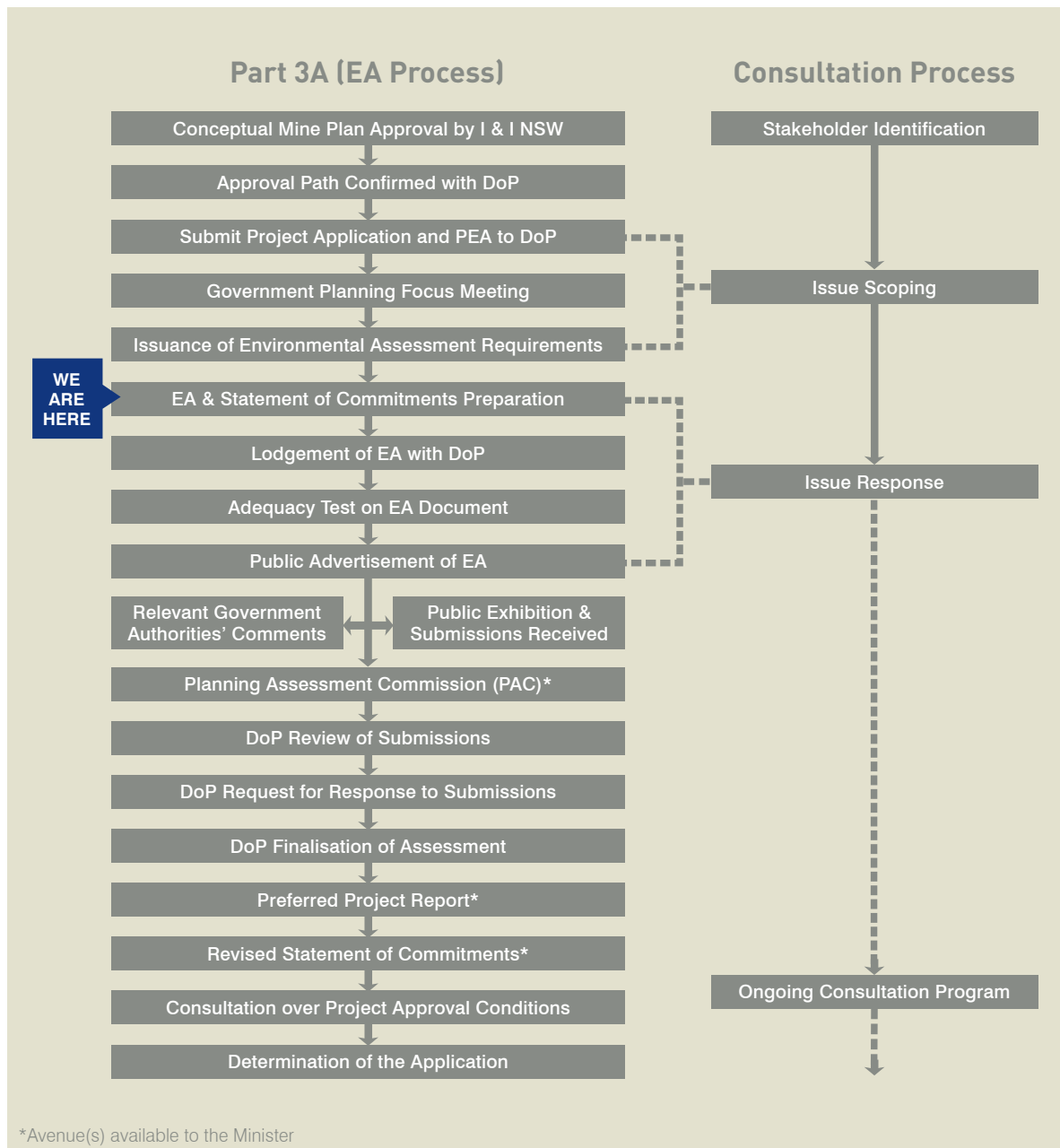


FIGURE 2: APPROVALS FLOWCHART

WHERE TO FROM HERE?

Hansen Bailey has commenced the preparation of the EA, which is anticipated to be submitted to the Department of Planning & Infrastructure in Quarter 1, 2012 for consideration and determination. Community Newsletter 3 will be issued at this time providing information regarding the key findings and public exhibition of the EA.

FURTHER INFORMATION

If you have any questions regarding the Project or the environmental assessment activities please contact:

Daniel Sullivan
 Senior Environmental Scientist
 Hansen Bailey
 Phone: (02) 6575 2000
 Email: dsullivan@hansenbailey.com.au

Matt Frodsham
 Stakeholder Engagement Specialist
 Anglo American Metallurgical Coal
 Phone: (02) 6540 8986
 Email: matt.frodsham@angloamerican.com





**NOVEMBER 2012
COMMUNITY NEWSLETTER 3**

This Community Newsletter is the third in a series and provides an update on the Drayton South Coal Project (the Project) as it progresses through the planning and approvals process. This newsletter provides an outline of the Project, a summary of the technical studies undertaken for the Environmental Assessment (EA), which supports the Project Application, and further information on the public exhibition of the EA.

DRAYTON SOUTH COAL PROJECT

INTRODUCTION

Anglo American Metallurgical Coal Pty Ltd (Anglo American) submitted an application for Project Approval under Part 3A of the Environmental Planning & Assessment Act 1979 (EP&A Act) in March 2011 to allow for the continuation of the existing Drayton Mine through the extraction of coal by both open cut and highwall mining operations in the Drayton South area. In October 2011, Part 3A of the EP&A Act was repealed. However, the Project has been granted the benefit of transitional provisions and as a result is a development to which Part 3A applies.

Following notification of the Director General's Environmental Assessment Requirements, an EA was prepared by Hansen Bailey Environmental Consultants (Hansen Bailey) to support the Project Application.

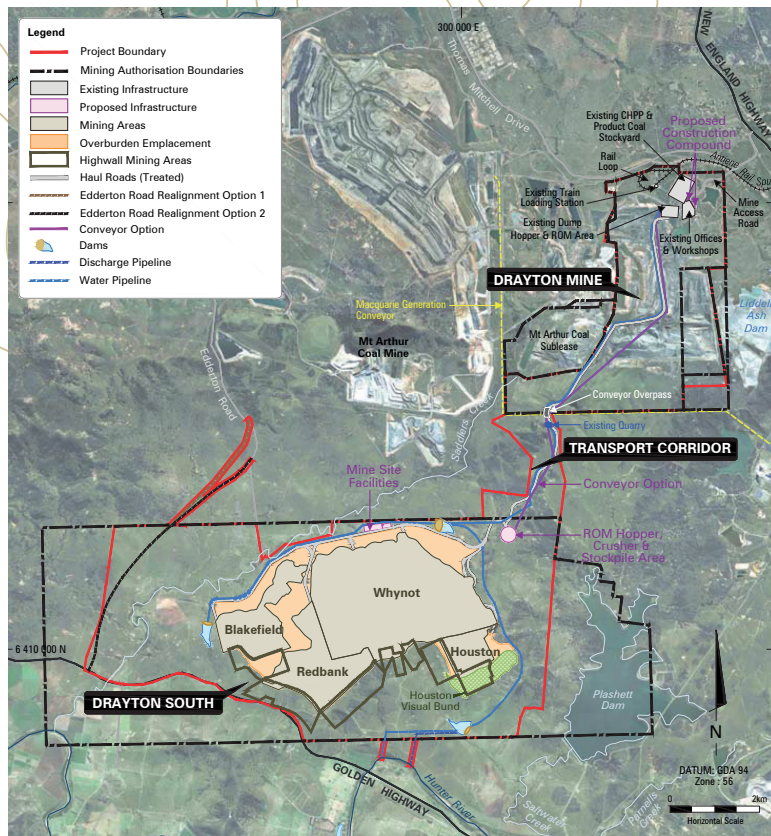


FIGURE 1: PROJECT LAYOUT

The Project involves:

- The continuation of operations at Drayton Mine as presently approved with minor additional mining areas within the East, North and South Pits;
- The development of an open cut and highwall mining operation extracting up to 7 Million tonnes per annum of Run of Mine coal over a period of 27 years within the Drayton South area;

- The utilisation of the existing Drayton Mine equipment fleet with the addition of a highwall miner and coal haulage fleet;
- The continuation of the existing workforce of up to 530 employees and contractors;
- The use of Drayton Mine's final landform voids for rejects and tailings disposal and water storage;
- The utilisation of the existing Drayton Mine infrastructure;
- The construction of a transport corridor between the Drayton South mining area and the existing Drayton Mine;
- The continued utilisation of the Antiene Rail Spur;
- The realignment of a section of Edderton Road; and
- The installation of further water management and power reticulation infrastructure to support mining in the Drayton South area.

PROJECT PLANNING AND REFINEMENT

Throughout the Project planning phase the primary objective was to develop a mine plan that minimised potential environmental and social impacts whilst maximising resource recovery and operational efficiency. As part of the technical studies undertaken for the EA, a number of additional environmental constraints were identified. In order to adequately address these constraints, Anglo American made necessary refinements and changes to the mine plan for the Project, including:

- Reducing the footprint of mining areas so they are situated entirely to the north of an existing and dominant ridgeline;
- Utilisation of highwall mining to maximise coal recovery while maintaining the existing ridgeline as a buffer between the operational areas of the Project and the receptors to the south;
- Revised design and location of the Houston visual bund further north in the valley;
- Incorporation of extensive tree screening into the Project mine plan to limit views to the operational areas of the Project and improve the amenity of the surrounding area;
- Modifications to the equipment fleet required to be utilised by the Project to reduce dust and noise generation;
- Treatment of all permanent haul roads with a suppressant to minimise dust emissions associated with vehicle movements;
- Implementations of additional controls for reducing adverse noise levels from mobile plant and conveyors at Drayton Mine; and
- Avoidance of a significant stone quarry archaeological site when realigning Edderton Road.

Further details regarding the environmental constraints incorporated into the mine plan for the Project are provided in the EA.



ENVIRONMENTAL ASSESSMENT

An EA has been completed by Hansen Bailey and a team of technical specialists which involved the assessment of the Project from a range of environmental and social aspects, including air quality, acoustics, equine health, visual, ecology, heritage, water, agriculture, traffic, social and economics. The EA has taken into consideration the above environmental and social aspects and as a result the Project has been designed to minimise impacts through the implementation of leading practice management measures.

Drayton Mine operates under a Safety, Health, Environment and Community Management System (SHECMS) which is accredited to ISO 14001 standards. This is designed to enable Drayton Mine to manage its environmental issues and ensure compliance with regulatory requirements. Anglo American will revise the existing SHECMS to address the environmental and social impacts identified and assessed in the EA for the Project.

PUBLIC EXHIBITION

The EA will be advertised and exhibited to the public by the Department of Planning and Infrastructure (DP&I) from 7 November 2012 to 21 December 2012 at the following locations:

DP&I Information Centre: 22-33 Bridge Street, Sydney (9228 6333)

DP&I Information Centre website: <http://www.planning.nsw.gov.au>

Muswellbrook Shire Council: 157 Maitland Street, Muswellbrook (6549 3700)

Nature Conservation Council: Level 2, 5 Wilson Street, Newtown (9516 1488)

Hansen Bailey website: <http://www.hansenbailey.com.au>

CD copies of the EA can also be obtained from DP&I free of charge. If you wish to comment on this Project, please provide a written response to DP&I consistent with the instructions on the DP&I Information Centre website.

An update of the Project timeline is included in Figure 2, which summarises the key stages in the planning approval and stakeholder consultation process.

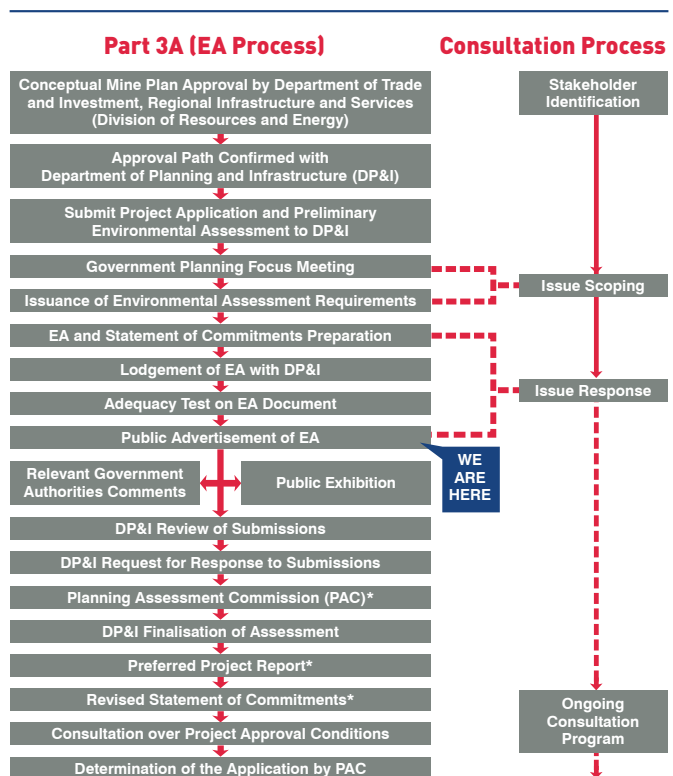


FIGURE 2: APPROVALS FLOWCHART

*Avenue available to the Minister

FURTHER INFORMATION

If you have any questions regarding the Project or the EA please contact:

Daniel Sullivan

Senior Environmental Scientist - Hansen Bailey

Phone: (02) 6575 2000

Email: dsullivan@hansenbailey.com.au



Matt Frodsham

Stakeholder Engagement Specialist - Anglo American Metallurgical Coal

Phone: (02) 6540 8986

Email: matt.frodsham@angloamerican.com



Current Application Consultation Materials



Real Mining. Real People. Real Difference.

DRAYTON SOUTH STAKEHOLDER UPDATE

MARCH 2015

DRAYTON SOUTH ENVIRONMENTAL IMPACT STATEMENT UPDATE

This update has been prepared to provide key stakeholders with information about the Drayton South project and the Environmental Impact Statement process.

In December 2014 Anglo American notified the NSW Government of our intention to develop a new application for the Drayton South project, urgently needed to secure employment and operational continuity for the existing Drayton mine. Drayton mine has been a major employer in the Hunter Valley region for 31 years but our current mineable reserves will expire this year, which is why we are urgently seeking approval for the new project. Anglo American is currently preparing a detailed Environmental Impact Statement for the new project plan which will be ready for public exhibition in April 2015.

THE STORY TO DATE – OUR PREVIOUS APPLICATION

Mining has been planned for the Drayton South project location for decades, with exploration and drilling beginning in the 1940s and the current exploration lease issued in 1998. Anglo American first submitted an application for Drayton South to the NSW Department of Planning and Environment (DP&E) in 2011. The previous application sought to extend Drayton mine operations and extract coal through open cut mining methods at a rate of up to seven million tonnes of run of mine coal per annum over 27 years. On assessing the project application, in December 2013 the NSW Planning Assessment Commission (PAC) concluded the project should not proceed unless changes were made to the mine plan to accommodate the neighbouring Coolmore and Woodlands (Darley) horse studs. The PAC presented a proposed setback, behind a second ridgeline, which essentially removed



several mining areas and reduced the mining footprint. In April 2014 Anglo American submitted a revised mine plan for Drayton South, smaller than the original proposal which reduced the mine life to only 20 years and reducing the total tonnes from 119 million to 97 million over the mine life. The NSW DP&E concluded the revised project was in the public interest and should be approved. Disappointingly, after these compromises, the final PAC report released in October 2014 agreed with the original review PAC findings, disagreed with the DP&E and refused the application based on proximity to the horse studs, perceived visual impacts and concerns with horse health, despite noting the mine plan would meet the specified regulatory criteria.

With 500 local jobs now under threat, Anglo American is currently developing a revised plan for the project. The new Drayton South application will address the PAC recommendations, extend the life of Drayton mine, save 500 local jobs, secure work for 140 local businesses, contribute \$30 million each year to State Government Royalties and support the Hunter Valley's local community. Anglo American has taken the PAC recommendations on board. The main difference with this new application is the project has been significantly reduced in size and the mine plan has been revised to demonstrate its impacts would be effectively managed and not affect the viability of the Coolmore and Woodlands horse studs.

THE DRAYTON SOUTH PROJECT

Our new project application will address the review and determination PAC’s recommendations. All mining activities will remain behind the PAC-prescribed second ridgeline.

This approach enables an economically viable method for the extraction of this valuable state resource, while further minimising impacts on the surrounding environment. The buffer between the mine and the Coolmore and Woodlands (Darley) horse stud operating areas has been increased. Drayton South will provide continued social and economic benefits currently generated by Drayton mine, and deliver a development in the public interest.

The map (right) shows the project layout and highlights the project features that have been removed from the previous application.

Under this new application, Anglo American proposes to extend the Drayton operations beyond 2015 by:

- Continuing operations at Drayton mine for 15 years;
- Developing a new open cut mining area, mining on average 6 Mtpa ROM coal;
- Providing ongoing employment for up to 500 full time equivalent employees;
- Minimising Drayton mine’s existing voids by using them for rejects and tailings disposal and water storage;
- Utilising the existing Drayton mine infrastructure;
- Accessing the Antiene Rail Spur to transport product coal to the Port of Newcastle for export;
- Realigning and upgrading a section of Edderton Road; and
- Progressively rehabilitating disturbed areas as mining operations are completed.

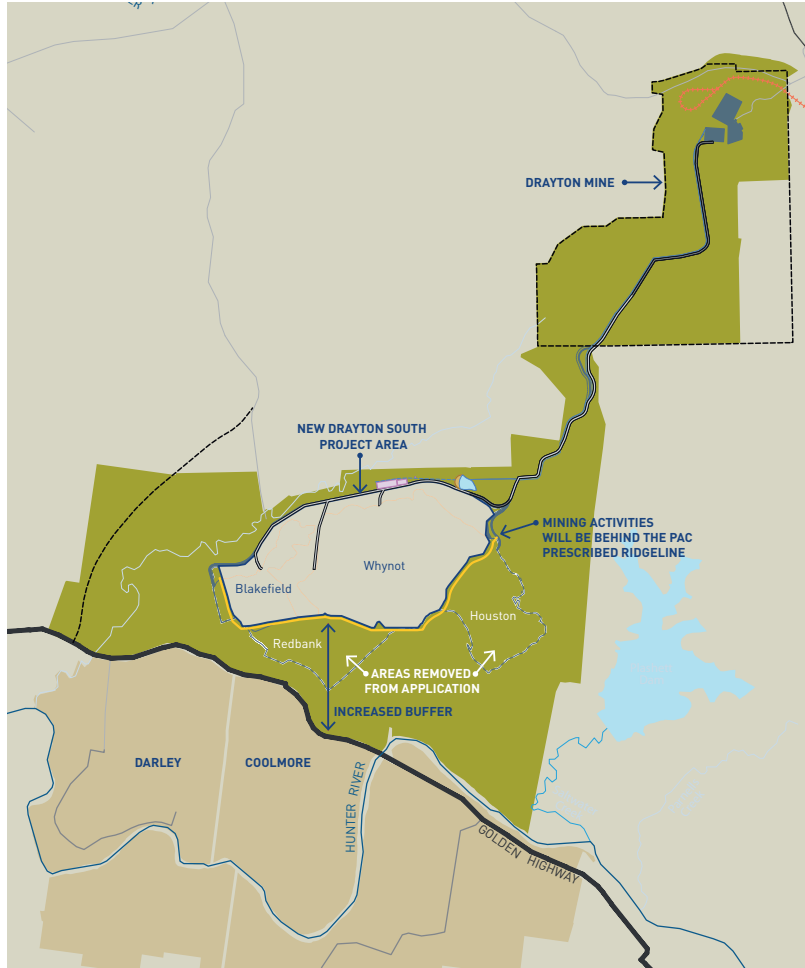
WORLD-CLASS REHABILITATION

Anglo American is committed to implementing an innovative rehabilitation and landscape design process for Drayton South, called Geofluc.

This approach incorporates the key landscape characteristics of a site to design a surface that functions in the same way as the stable natural landforms that surround it.

The implementation of this approach at Drayton in 2013 was a first in the Hunter Valley. The project will also provide significant opportunity to improve the Drayton mine landform above and beyond the current approved Drayton mine rehabilitation plan.

ANGLO AMERICAN’S MAIN OBJECTIVE IS TO MAINTAIN OPERATIONS AND THE EXISTING JOBS. TO ACHIEVE THIS, APPROVAL IS URGENTLY REQUIRED FOR THE NEW APPLICATION.

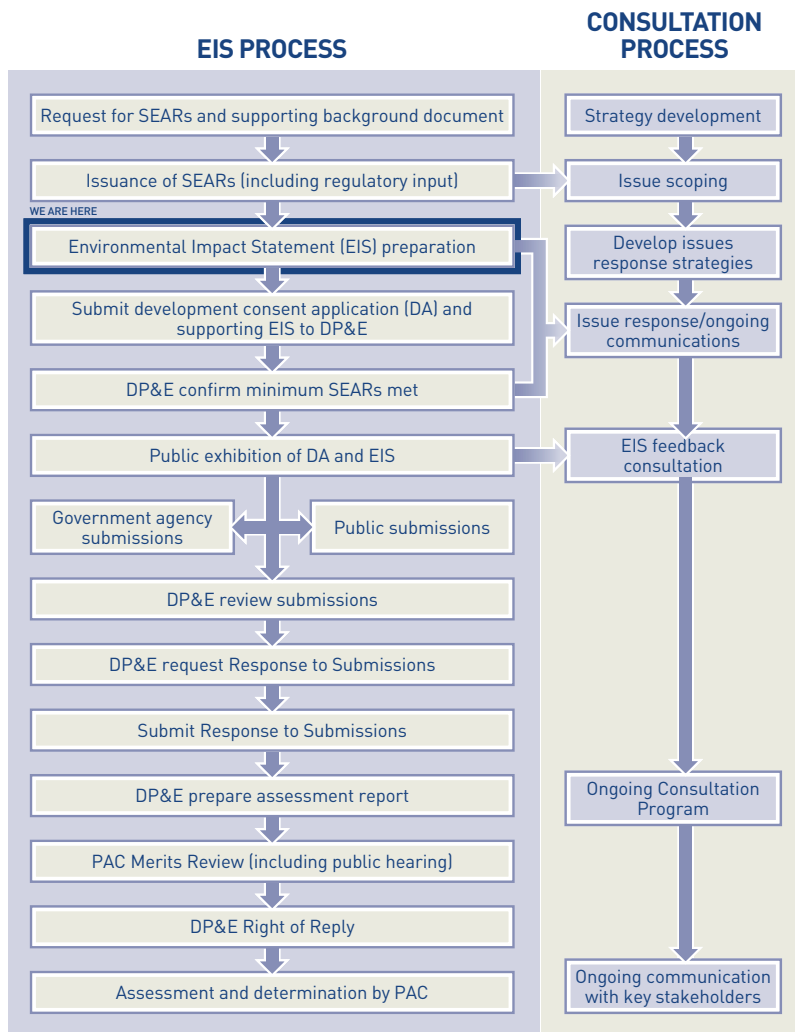


KEY DIFFERENCES TO THE PREVIOUS APPLICATION

The mine plan of the new application is defined by ridgelines nominated in the PAC Review Report issued in December 2013. The project will remain behind the ridgelines nominated by the PAC (see map – above). Significantly, this at least doubles the buffer setback distance from the Coolmore and Woodlands thoroughbred horse studs from the previous application and is at least two kilometres from the horse stud operational areas.

The new application addresses the stated reasons the PAC refused the previous application. It will:

- Have no impact on the viability of operations at Coolmore or Woodlands;
- Present no reasonable reason for either horse stud to consider leaving the Hunter region.
- Provide a sufficient buffer to protect the horse studs from the impacts of mining;
- Address any potential equine health and horse response to mining operations issues;
- Generate \$30 million a year in state Government royalties;
- Enable continued spend of \$50 million a year with local procurement and suppliers;
- Pay \$90 million a year in direct wages to employees and contractors; and
- Deliver a project that is in the public interest.



PLANNING APPROVALS PROCESS

An application for the Secretary's Environmental Assessment Requirements (SEARs) for the Drayton South project was submitted to DP&E in December 2014. The SEARs for the project have been issued. An application has also been made to the Gateway Panel for a Gateway Certificate.

Once the Gateway Certificate has been issued the EIS will be updated to ensure all requirements for assessment are met. The SEAR's and Gateway Certificate will guide the detailed assessment for any potential impacts from the project so that a State Significant Development Application and accompanying EIS may be lodged with DP&E for determination.

Copies of these documents are available on the Department's website at: <http://majorprojects.planning.nsw.gov.au>

Anglo American has commissioned Hansen Bailey, a specialist environmental consultancy firm based in Singleton to complete the EIS. Specialist technical studies are currently being undertaken for inclusion in the EIS.

COMMUNITY CONSULTATION PROGRAM

We will consult with the community and interested stakeholders throughout the EIS process. The diagram above outlines the EIS milestones and related consultation steps we will be taking.

Hansen Bailey has been appointed by Anglo American to coordinate an independent community consultation program. Community consultation will build on the consultation undertaken for the previous application and may include personal visits to adjacent neighbours,

presentations to the Drayton Community Consultative Committee and distributing regular updates to all interested parties.

The main purpose of the community consultation program is to determine the community's views on the Drayton South project, so they are carefully considered in the planning approvals process.

WHERE TO FROM HERE?

Anglo American will continue to progress the environmental and community assessment activities required as part of the preparation of the EIS. The EIS technical studies are currently underway and will be presented to the DP&E as part of the EIS by Quarter 2 2015.



MEET THE TEAM

Anglo American is sponsoring a series of monthly community barbeques in the Hunter Valley where you can come and meet our project representatives. We will also be setting up a community information stand at the Muswellbrook Marketplace Shopping Complex in April 2015. Please follow us on social media throughout the Drayton South application process to find out more:



@AngloAmericanAU



facebook.com/AngloAmerican

FURTHER INFORMATION

If you have any questions regarding the project or the EIS activities please contact:

Daniel Sullivan

Senior Environmental Scientist
Hansen Bailey
Phone: (02) 6575 2000
Email: dsullivan@hansenbailey.com.au

Matt Frodsham

Stakeholder Engagement Specialist
Anglo American
Phone: (02) 6540 8986
Email: matt.frodsham@angloamerican.com

Drayton mine

Thomas Mitchell Drive, Muswellbrook
NSW 2333, Australia

For information on Drayton
South please contact

Matt Frodsham
Tel +61 (0) 2 6542 0252
Email matt.frodsham@angloamerican.com

www.angloamerican.com.au

Real Mining. Real People. Real Difference.