

# SECTION 4.55 APPLICATION 242-244 BEECROFT ROAD, EPPING

Mixed Use Development

March 2026



## Drawing List

Series	Drawing No.	Drawing Name	Scale	Rev	Size
<b>General</b>	DA-001-001	Title Sheet		D	A1
<b>GA Plans</b>					
	DA-110-130	Roof Level	1:200	E	A1
	DA-110-120	Level 17	1:200	E	A1
	DA-110-110	Level 16	1:200	E	A1
	DA-110-090	Level 15	1:200	E	A1
	DA-110-080	Level 14	1:200	E	A1
	DA-110-050	Level 08-13	1:200	E	A1
	DA-110-040	Level 07	1:200	E	A1
	DA-110-030	Level 06	1:200	E	A1
	DA-110-020	Level 01-05	1:200	E	A1
	DA-110-010	Ground Level	1:200	E	A1
	DA-110-008	Lower Ground	1:200	G	A1
	DA-110-007	Basement 01	1:200	G	A1
	DA-110-006	Basement 02	1:200	G	A1
	DA-110-005	Basement 03	1:200	G	A1
<b>GA Elevations</b>					
	DA-210-101	Building A West Elevation	1:150, 1:100	E	A1
	DA-210-201	Building B South Elevation	1:150, 1:100	E	A1
	DA-210-301	Building B North Elevation	1:150, 1:100	E	A1
	DA-210-401	Building C North Elevation	1:150, 1:100	E	A1
	DA-210-501	Building E North Elevation	1:150, 1:100	E	A1
	DA-210-601	Site East Elevation	1:200, 1:100	E	A1
	DA-210-701	Building C and E Elevation	1:150, 1:100	E	A1
	DA-210-801	Building C South Elevation	1:150, 1:100	E	A1
	DA-210-901	Building E South Elevation	1:150, 1:100	E	A1
	DA-210-1001	Site West Elevation	1:200, 1:100	E	A1
<b>GA Sections</b>					
	DA-310-101	Section AA_North-South	1:200	D	A1
	DA-310-201	Section BB_Building A & B	1:150	D	A1
	DA-310-301	Section CC_Building C & D	1:150	D	A1
	DA-310-401	Section DD_Building E	1:150	D	A1
<b>Amenity Diagrams</b>					
	DA-720-001	Apartment Amenity (Solar, Cross Vent)	1:450	D	A1
	DA-720-002	Apartment Amenity (Solar, Cross Vent)	1:450	D	A1
	DA-720-003	Apartment Amenity (Solar, Cross Vent)	1:450	D	A1
	DA-720-004	Apartment Amenity (Solar, Cross Vent)	1:450	D	A1
	DA-720-005	Apartment Amenity (Solar, Cross Vent)	1:450	D	A1
<b>Deep Soil and Communal Space Diagrams</b>					
	DA-730-001	Ground Level Deep Soil	1:450	D	A1
<b>GFA Diagrams</b>					
	DA-770-001	GFA B3-LG	1:450	D	A1
	DA-770-002	GFA Level G-L6	1:450	D	A1
	DA-770-003	GFA Level 7-15	1:450	D	A1
	DA-770-004	GFA Level 16-17	1:450	D	A1
<b>Adaptable Plan Layouts</b>					
	DA-810-001	Adaptable Plan Layouts	1:100	E	A1
	DA-810-002	Adaptable Plan Layouts	1:100	E	A1
	DA-810-003	Adaptable Plan Layouts	1:100	E	A1
	DA-810-004	Adaptable Plan Layouts	1:100	E	A1
	DA-810-005	Liveable Plan Layouts	1:100	E	A1
<b>Affordable Housing</b>					
	DA-820-001	Affordable Housing	1:450	C	A1
	DA-820-002	Affordable Housing	1:450	C	A1
<b>Materials &amp; Finishes Board</b>					
	DA-890-001	Materials	1:100, 1:0.79	D	A1

**NOTES**  
THIS DRAWING IS COPYRIGHT © OF TURNER. NO REPRODUCTION WITHOUT PERMISSION. UNLESS NOTED OTHERWISE THIS DRAWING IS NOT FOR CONSTRUCTION. ALL DIMENSIONS AND LEVELS ARE TO BE CHECKED ON SITE PRIOR TO THE COMMENCEMENT OF WORK. IN THE EVENT OF ANY DISCREPANCIES FOR CLARIFICATION BEFORE PROCEEDING WITH WORK, DRAWINGS ARE NOT TO BE SCALED. USE ONLY DIMENSIONS AND LEVELS NOTED ON DRAWING. REFER TO CONSULTANT DOCUMENTATION FOR FURTHER INFORMATION. PC AND BIM FILES ARE UNCONTROLLED DOCUMENTS AND ARE ISSUED FOR INFORMATION ONLY.

**CLIENT**  
Dasco Property Development Services Pty Ltd

**LEGEND**  
Amendments to the approved SSDA (SSD-68708456 dated 19th August 2025)

AC Condenser Units

Rev	Date	Approved by	Revision Notes
D	11/03/26	TK	For S 455 Submission - Response to Department #2
C	03/02/26	TK	For S 455 Submission - Response to Department
B	06/11/26	TK	For S 455 Submission
A	11/07/24	TK	For Amending SSDA Submission

**Project Title**  
BEECROFT ROAD  
242-244 Beecroft Road, Epping

**Drawing Title**  
General  
Title Sheet

**Scale**  
@A1, 50%@A3

**Project No.** 21044

**Drawn by** JL

**North**

**Dwg No.** DA-001-001

**Rev** D

**For S4.55 Submission**

**TURNER**

Level 7 ONE Oxford Street  
Darlinghurst NSW 2010  
AUSTRALIA

T +61 2 8668 0000  
F +61 2 8668 0066  
turnerinfo.com.au



**NOTES**  
 THIS DRAWING IS COPYRIGHT © OF TURNER. NO REPRODUCTION WITHOUT PERMISSION. UNLESS NOTED OTHERWISE THIS DRAWING IS NOT FOR CONSTRUCTION. ALL DIMENSIONS AND LEVELS ARE TO BE CHECKED ON SITE PRIOR TO THE COMMENCEMENT OF WORK. NOTIFY TURNER OF ANY DISCREPANCIES FOR CLARIFICATION BEFORE PROCEEDING WITH WORK. DRAWINGS ARE NOT TO BE SCALED. USE ONLY DIMENSIONS REFER TO CONSULTANT DOCUMENTATION FOR FURTHER INFORMATION. IFC AND BIM FILES ARE UNCONTROLLED DOCUMENTS AND ARE ISSUED FOR INFORMATION ONLY.

**CLIENT**  
 Dasco Property Development Services Pty Ltd

**LEGEND**  
 Amendments to the approved SSDA (SSD-68708456 dated 19th August 2025)



Rev	Date	Approved by	Revision Notes
G	11/03/26	TK	For S 455 Submission - Response to Department #2
F	03/02/26	TK	For S 455 Submission - Response to Department
E	06/11/26	TK	For S 455 Submission
D	15/09/25	TK	For Information
C	24/07/25	TK	For Amending SSDA Submission
B	08/11/24	TK	For Information
A	11/07/24	TK	For Amending SSDA Submission

**Project Title**  
 BEECROFT ROAD  
 242-244 Beecroft Road, Epping

**Drawing Title**  
 GA Plans  
 Basement 03

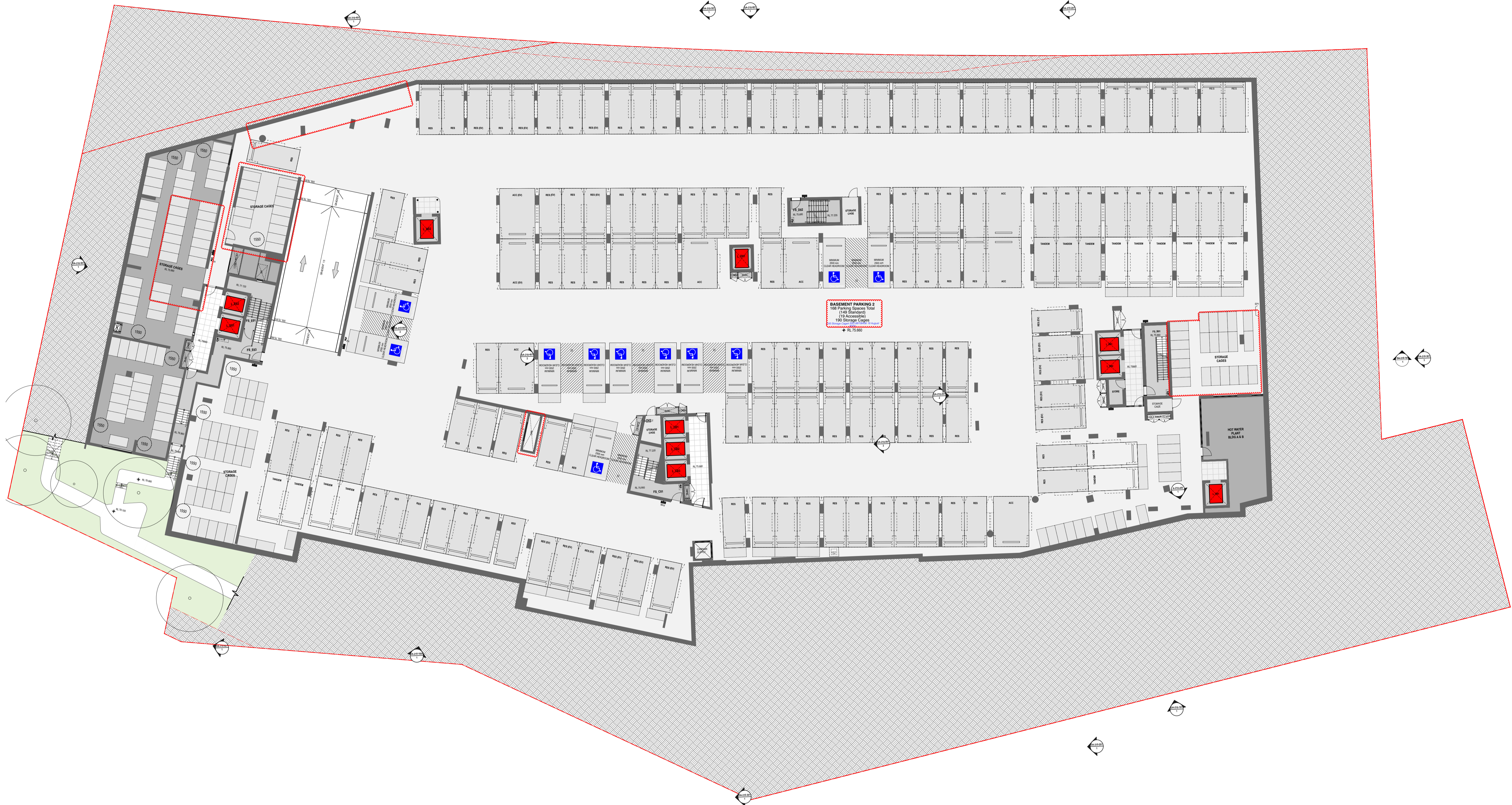
Scale: 1:200 @A1, 50%@A3  
 Status: For S4.55 Submission

Project No.: 21044  
 Dwg No.: DA-110-005

Drawn by: JL  
 Rev: G

**TURNER**  
 Level 7 ONE Oxford Street  
 Darlinghurst NSW 2010  
 AUSTRALIA

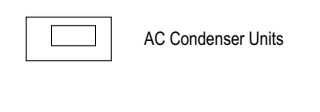
T +61 2 8668 0000  
 F +61 2 8668 0066  
 turnerinfo.com.au



**NOTES**  
 THIS DRAWING IS COPYRIGHT © OF TURNER. NO REPRODUCTION WITHOUT PERMISSION. UNLESS NOTED OTHERWISE THIS DRAWING IS NOT FOR CONSTRUCTION. ALL DIMENSIONS AND LEVELS ARE TO BE CHECKED ON SITE PRIOR TO THE COMMENCEMENT OF WORK. INFORM TURNER OF ANY DISCREPANCIES FOR CLARIFICATION BEFORE PROCEEDING WITH WORK. DRAWINGS ARE NOT TO BE SCALED. USE ONLY DIMENSIONS SHOWN. REFER TO CONSULTANT DOCUMENTATION FOR FURTHER INFORMATION. DWG, PC AND BIM FILES ARE UNCONTROLLED DOCUMENTS AND ARE ISSUED FOR INFORMATION ONLY.

**CLIENT**  
 Dasco Property Development Services Pty Ltd

**LEGEND**  
 Amendments to the approved SSDA (SSD-68708456 dated 19th August 2025)



Rev	Date	Approved by	Revision Notes
G	11/03/26	TK	For S 455 Submission - Response to Department #2
F	03/02/26	TK	For S 455 Submission - Response to Department
E	06/11/26	TK	For S 455 Submission
D	15/09/25	TK	For Information
C	24/07/25	TK	For Amending SSDA Submission
B	08/11/24	TK	For Information
A	11/07/24	TK	For Amending SSDA Submission

**Project Title**  
 BEECROFT ROAD  
 242-244 BEECROFT ROAD, EPPING

**Drawing Title**  
 GA Plans  
 Basement 02

Scale: 1:200 @A1, 50% @A3  
 Status: For S4.55 Submission

Project No.: 21044  
 Dwg No.: DA-110-006

Drawn by: JL  
 Rev: G

**TURNER**  
 Level 7 ONE Oxford Street  
 DUNEDIN 9010  
 AUSTRALIA  
 T +61 3 8668 0000  
 F +61 3 8668 0066  
 turnerco.com.au



**NOTES**  
 THIS DRAWING IS COPYRIGHT © OF TURNER. NO REPRODUCTION WITHOUT PERMISSION. UNLESS NOTED OTHERWISE THIS DRAWING IS NOT FOR CONSTRUCTION. ALL DIMENSIONS AND LEVELS ARE TO BE CHECKED ON SITE PRIOR TO THE COMMENCEMENT OF WORK. IN THE EVENT OF ANY DISCREPANCIES FOR CLARIFICATION BEFORE PROCEEDING WITH WORK, DRAWINGS ARE NOT TO BE SCALED. USE ONLY FOLLOWED DIMENSIONS. REFER TO CONSULTANT DOCUMENTATION FOR FURTHER INFORMATION. IFC AND BIM FILES ARE UNCONTROLLED DOCUMENTS AND ARE ISSUED FOR INFORMATION ONLY.

**CLIENT**  
 Dasco Property Development Services Pty Ltd

**LEGEND**  
 Amendments to the approved SSDA (SSD-68708456 dated 19th August 2025)

AC Condenser Units

Rev	Date	Approved by	Revision Notes
G	11/03/26	TK	For S 455 Submission - Response to Department #2
F	03/02/26	TK	For S 455 Submission - Response to Department
E	06/11/26	TK	For S 455 Submission
D	15/09/25	TK	For Information
C	24/07/25	TK	For Amending SSDA Submission
B	08/11/24	TK	For Information
A	11/07/24	TK	For Amending SSDA Submission

**Project Title**  
 BEECROFT ROAD  
 242-244 Beecroft Road, Epping

**Drawing Title**  
 GA Plans  
 Basement 01

**Scale**  
 1:200 @A1, 50% @A3

**Project No.** 21044  
**Dwg No.** DA-110-007

**Drawn by** JL  
**Rev** G

**TURNER**  
 Level 7 ONE Oxford Street  
 Darlinghurst NSW 2010  
 AUSTRALIA  
 T +61 2 8668 0000  
 F +61 2 8668 0066  
 turnerinfo.com.au

BEECROFT ROAD

DEVLINS CREEK

RAY ROAD



LOWER GROUND PARKING  
 95 Parking Spaces  
 (81 Standard)  
 (14 Accessible)  
 38 Storage Spaces

**NOTES**  
 THIS DRAWING IS COPYRIGHT © OF TURNER. NO REPRODUCTION WITHOUT PERMISSION. UNLESS NOTED OTHERWISE THIS DRAWING IS NOT FOR CONSTRUCTION. ALL DIMENSIONS AND LEVELS ARE TO BE CHECKED ON SITE PRIOR TO THE COMMENCEMENT OF WORK. IN THE EVENT OF ANY DISCREPANCIES FOR CLARIFICATION BEFORE PROCEEDING WITH WORK, DRAWINGS ARE NOT TO BE SCALED. USE ONLY FIGURED DIMENSIONS. REFER TO CONSULTANT DOCUMENTATION FOR FURTHER INFORMATION. PC AND BIM FILES ARE UNCONTROLLED DOCUMENTS AND ARE ISSUED FOR INFORMATION ONLY.

**CLIENT**  
 Dasco Property Development Services Pty Ltd

**LEGEND**  
 Amendments to the approved SSDA (SSD-68708456 dated 19th August 2025)

AC Condenser Units

Rev	Date	Approved by	Revision Notes
G	11/03/26	TK	For S.455 Submission - Response to Department #2
F	03/02/26	TK	For S.455 Submission - Response to Department
E	06/11/26	TK	For S.455 Submission
D	15/09/25	TK	For Information
C	24/07/25	TK	For Amending SSDA Submission
B	08/11/24	TK	For Information
A	11/07/24	TK	For Amending SSDA Submission

**Project Title**  
 BEECROFT ROAD  
 242-244 Beecroft Road, Epping

**Drawing Title**  
 GA Plans  
 Lower Ground

Scale: 1:200 @A1, 50% @A3  
 Project No: 21044  
 Drawing No: DA-110-008  
 For S.455 Submission

Drawn by: JL  
 Rev: G

**TURNER**  
 Level 7 ONE Oxford Street  
 Darlinghurst NSW 2010  
 AUSTRALIA  
 T +61 2 8668 0000  
 F +61 2 8668 0066  
 turnerco.com.au



BEECROFT ROAD

Proposed Beecroft Road Slip Lane

DEVLINS CREEK

RAY ROAD

**NOTES**  
 THIS DRAWING IS COPYRIGHT © OF TURNER. NO REPRODUCTION WITHOUT PERMISSION. UNLESS NOTED OTHERWISE THIS DRAWING IS NOT FOR CONSTRUCTION. ALL DIMENSIONS AND LEVELS ARE TO BE CHECKED ON SITE PRIOR TO THE COMMENCEMENT OF WORK. IN THE EVENT OF ANY DISCREPANCIES FOR CLARIFICATION BEFORE PROCEEDING WITH WORK, DRAWINGS ARE NOT TO BE SCALED. USE ONLY FIGURED DIMENSIONS. REFER TO CONSULTANT DOCUMENTATION FOR FURTHER INFORMATION. IFC AND BIM FILES ARE UNCONTROLLED DOCUMENTS AND ARE ISSUED FOR INFORMATION ONLY.

**CLIENT**  
 Dasco Property Development Services Pty Ltd

**LEGEND**  
 Amendments to the approved SSDA (SSD-68708456 dated 19th August 2025)

AC Condenser Units

Rev	Date	Approved by	Revision Notes
E	11/03/26	TK	For S.455 Submission - Response to Department #2
D	03/02/26	TK	For S.455 Submission - Response to Department
C	06/11/26	TK	For S.455 Submission
B	15/09/25	TK	For Information
A	11/07/24	TK	For Amending SSDA Submission

**Project Title**  
 BEECROFT ROAD  
 242-244 Beecroft Road, Epping

**Drawing Title**  
 GA Plans  
 Ground Level

Scale: 1:200 @A1, 50% @A3  
 Status: For S.455 Submission

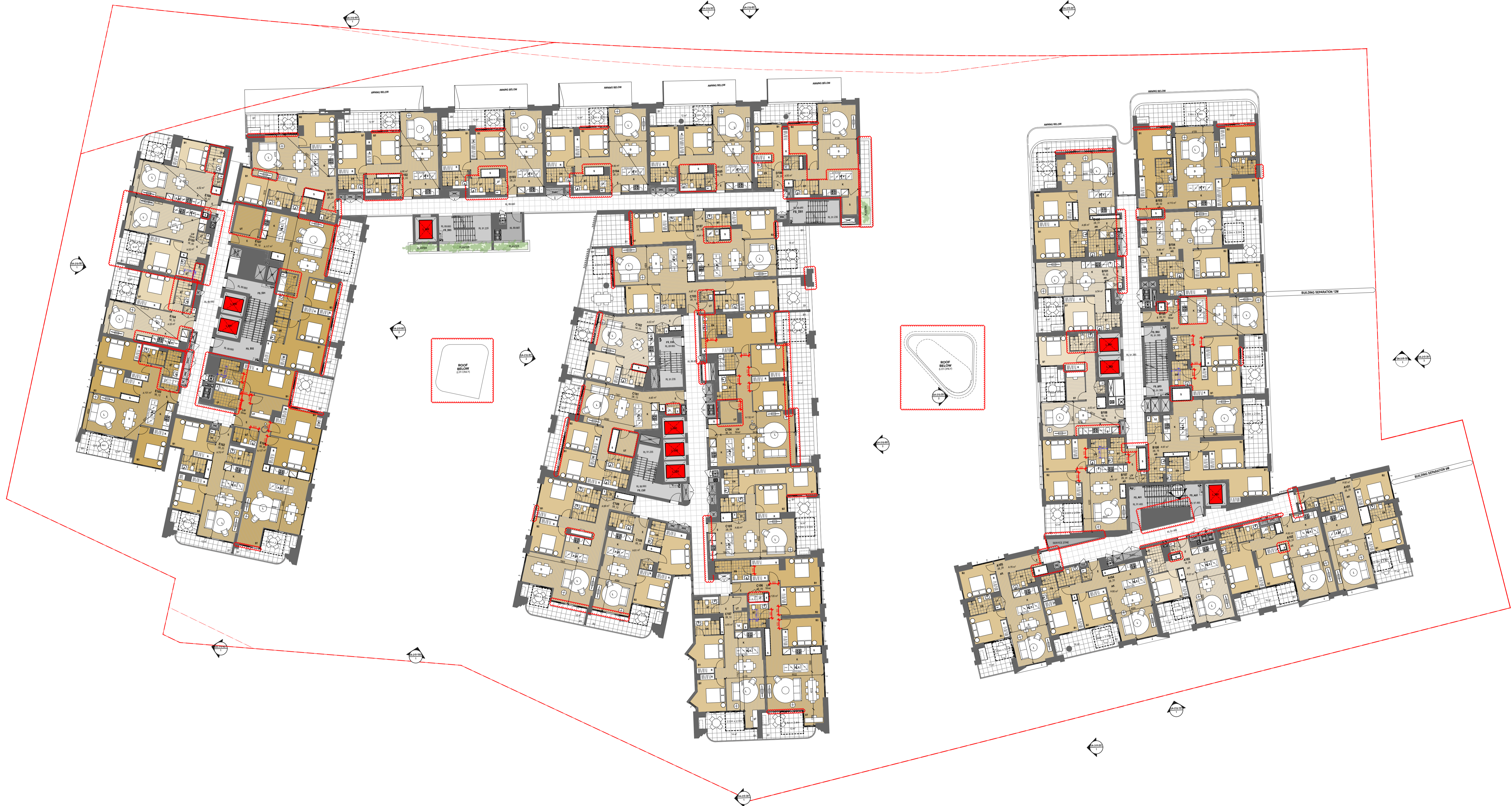
Project No: 21044  
 Drawing No: DA-110-010

Drawn by: JL  
 Rev: E

**TURNER**

Level 7 ONE Oxford Street  
 Darlinghurst NSW 2010  
 AUSTRALIA

T +61 2 8668 0000  
 F +61 2 9668 0368  
 turner@turner.com.au



**NOTES**  
 THIS DRAWING IS COPYRIGHT © OF TURNER. NO REPRODUCTION WITHOUT PERMISSION. UNLESS NOTED OTHERWISE THIS DRAWING IS NOT FOR CONSTRUCTION. ALL DIMENSIONS AND LEVELS ARE TO BE CHECKED ON SITE PRIOR TO THE COMMENCEMENT OF WORK. INFORM TURNER OF ANY DISCREPANCIES FOR CLARIFICATION BEFORE PROCEEDING WITH WORK. DRAWINGS ARE NOT TO BE SCALED. USE ONLY DIMENSIONS SHOWN. REFER TO CONSULTANT DOCUMENTATION FOR FURTHER INFORMATION. IFC AND BIM FILES ARE UNCONTROLLED DOCUMENTS AND ARE ISSUED FOR INFORMATION ONLY.

**CLIENT**  
 Dasco Property Development Services Pty Ltd

**LEGEND**  
 Amendments to the approved SSDA (SSD-68708456 dated 19th August 2025)



Rev	Date	Approved by	Revision Notes
E	11/03/26	TK	For S 455 Submission - Response to Department #2
D	03/02/26	TK	For S 455 Submission - Response to Department
C	06/11/26	TK	For S 455 Submission
B	15/09/25	TK	For Information
A	11/07/24	TK	For Amending SSDA Submission

**Project Title**  
 BEECROFT ROAD  
 242-244 BEECROFT ROAD, EPPING

**Drawing Title**  
 GA Plans  
 Level 01-05

**Scale**  
 1:200 @A1, 50% @A3

**Project No.** 21044  
**Dwg No.** DA-110-020

**Drawn by** JL  
**Rev** E

**TURNER**

Level 7 ONE Oxford Street  
 Darlinghurst NSW 2010  
 AUSTRALIA

T +61 2 8668 0000  
 F +61 2 8668 0066  
 turnerco.com.au



**NOTES**  
 THIS DRAWING IS COPYRIGHT © OF TURNER. NO REPRODUCTION WITHOUT PERMISSION. UNLESS NOTED OTHERWISE THIS DRAWING IS NOT FOR CONSTRUCTION. ALL DIMENSIONS AND LEVELS ARE TO BE CHECKED ON SITE PRIOR TO THE COMMENCEMENT OF WORK. INFORM TURNER OF ANY DISCREPANCIES FOR CLARIFICATION BEFORE PROCEEDING WITH WORK. DRAWINGS ARE NOT TO BE SCALED. USE ONLY DIMENSIONS SHOWN. REFER TO CONSULTANT DOCUMENTATION FOR FURTHER INFORMATION. IFC AND BIM FILES ARE UNCONTROLLED DOCUMENTS AND ARE ISSUED FOR INFORMATION ONLY.

**CLIENT**  
 Dasco Property Development Services Pty Ltd

**LEGEND**  
 Amendments to the approved SSDA (SSD-68708456 dated 19th August 2025)

AC Condenser Units

Rev	Date	Approved by	Revision Notes
E	11/03/26	TK	For S455 Submission - Response to Department #2
D	03/02/26	TK	For S455 Submission - Response to Department
C	06/11/26	TK	For S455 Submission
B	15/09/25	TK	For Information
A	11/07/24	TK	For Amending SSDA Submission

**Project Title**  
 BEECROFT ROAD  
 242-244 Beecroft Road, Epping

**Drawing Title**  
 GA Plans  
 Level 06

Scale: 1:200 @A1, 50% @A3

Project No. 21044

Drawn by JL

Checked by E

Project Title: BEECROFT ROAD, 242-244 Beecroft Road, Epping

Dwg No. DA-110-030

Rev E

**TURNER**

Level 7 ONE Oxford Street  
 Darlinghurst NSW 2010  
 AUSTRALIA

T +61 2 8668 0000  
 F +61 2 8668 0066  
 turnerinfo.com.au



**NOTES**  
 THIS DRAWING IS COPYRIGHT © OF TURNER. NO REPRODUCTION WITHOUT PERMISSION. UNLESS NOTED OTHERWISE THIS DRAWING IS NOT FOR CONSTRUCTION. ALL DIMENSIONS AND LEVELS ARE TO BE CHECKED ON SITE PRIOR TO THE COMMENCEMENT OF WORK. INFORM TURNER OF ANY DISCREPANCIES FOR CLARIFICATION BEFORE PROCEEDING WITH WORK. DRAWINGS ARE NOT TO BE SCALED. USE ONLY FIGURED DIMENSIONS. REFER TO CONSULTANT DOCUMENTATION FOR FURTHER INFORMATION. IFC AND BIM FILES ARE UNCONTROLLED DOCUMENTS AND ARE ISSUED FOR INFORMATION ONLY.

**CLIENT**  
 Dasco Property Development Services Pty Ltd

**LEGEND**  
 Amendments to the approved SSDA (SSD-68708456 dated 19th August 2025)



Rev	Date	Approved by	Revision Notes
E	11/03/26	TK	For S.455 Submission - Response to Department #2
D	03/02/26	TK	For S.455 Submission - Response to Department
C	06/11/26	TK	For S.455 Submission
B	15/09/25	TK	For Information
A	11/07/24	TK	For Amending SSDA Submission

**Project Title**  
 BEECROFT ROAD  
 242-244 BEECROFT ROAD, EPPING

**Drawing Title**  
 GA Plans  
 Level 07

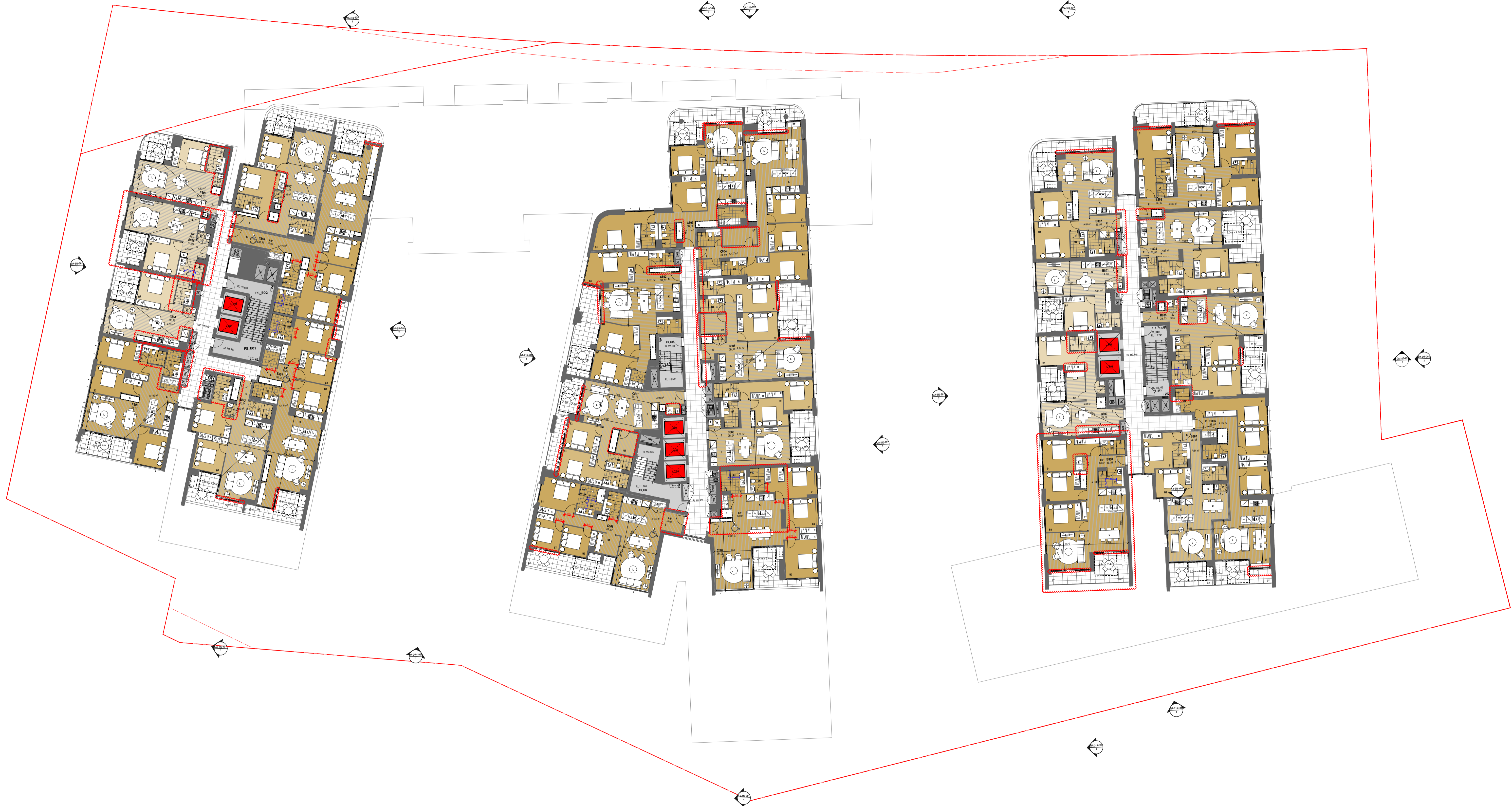
Scale: 1:200 @A1, 50% @A3  
 Status: For S.455 Submission

Project No. 21044  
 Dwg No. DA-110-040

Drawn by: JL  
 Rev: E

**TURNER**  
 Level 7 ONE Oxford Street  
 Darlinghurst NSW 2010  
 AUSTRALIA

T +61 2 8668 0000  
 F +61 2 8668 0066  
 turnerinfo.com.au



**NOTES**  
 THIS DRAWING IS COPYRIGHT © OF TURNER. NO REPRODUCTION WITHOUT PERMISSION. UNLESS NOTED OTHERWISE THIS DRAWING IS NOT FOR CONSTRUCTION. ALL DIMENSIONS AND LEVELS ARE TO BE CHECKED ON SITE PRIOR TO THE COMMENCEMENT OF WORK. INFORM TURNER OF ANY DISCREPANCIES FOR CLARIFICATION BEFORE PROCEEDING WITH WORK. DRAWINGS ARE NOT TO BE SCALED. USE ONLY DIMENSIONS SHOWN ON DRAWING. REFER TO CONSULTANT DOCUMENTATION FOR FURTHER INFORMATION. IFC AND BIM FILES ARE UNCONTROLLED DOCUMENTS AND ARE ISSUED FOR INFORMATION ONLY.

**CLIENT**  
 Dasco Property Development Services Pty Ltd

**LEGEND**  
 Amendments to the approved SSDA (SSD-68708456 dated 19th August 2025)



Rev	Date	Approved by	Revision Notes
E	11/03/26	TK	For S.455 Submission - Response to Department #2
D	03/02/26	TK	For S.455 Submission - Response to Department
C	06/11/26	TK	For S.455 Submission
B	15/09/25	TK	For Information
A	11/07/24	TK	For Amending SSDA Submission

**Project Title**  
 BEECROFT ROAD  
 242-244 BEECROFT ROAD, EPPING

**Drawing Title**  
 GA Plans  
 Level 08-13

**Scale**  
 1:200 @A1, 50% @A3

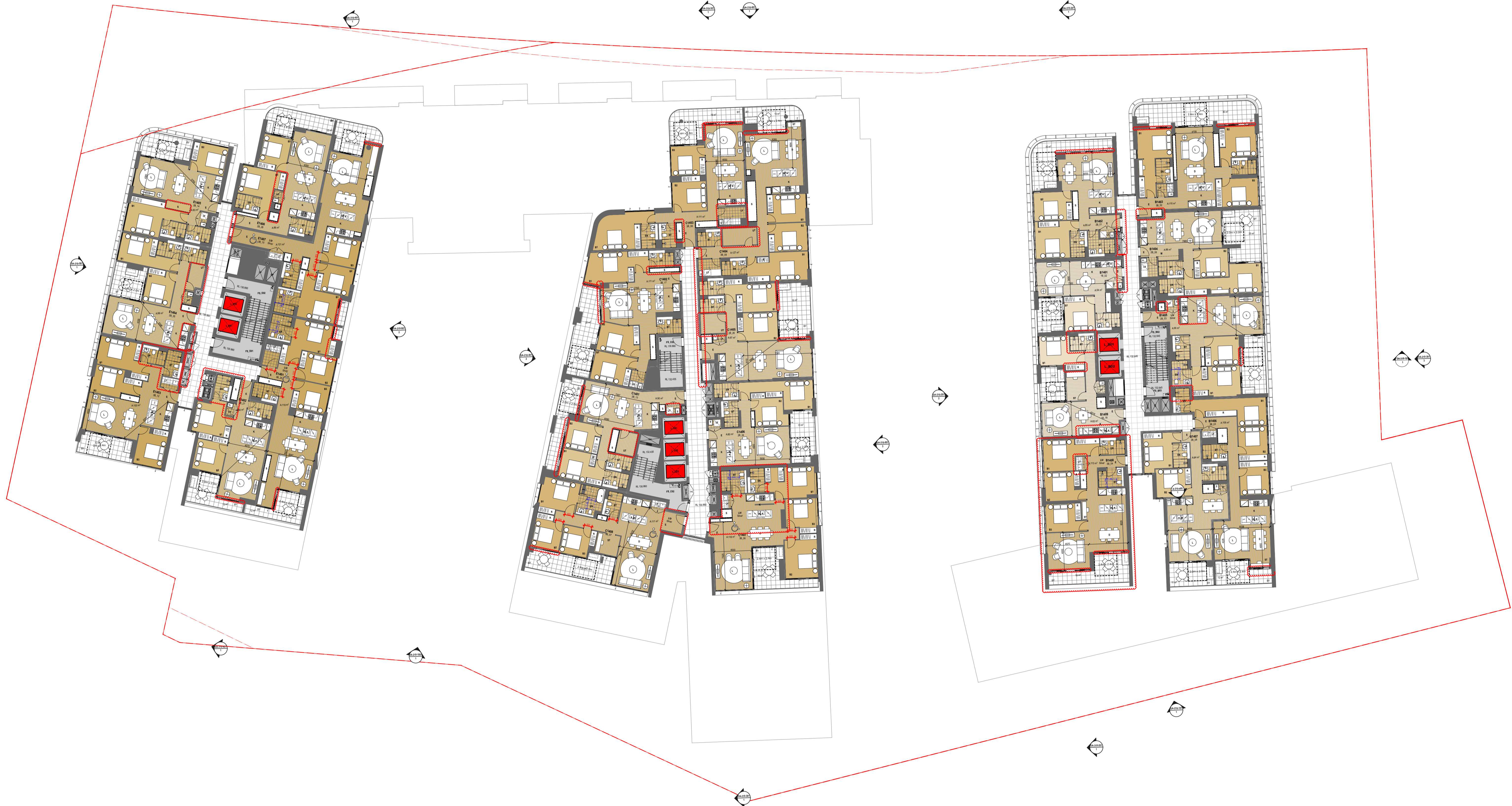
**Project No.** 21044  
**Dwg No.** DA-110-050

**Drawn by** JL  
**Rev** E

**TURNER**

Level 7 ONE Oxford Street  
 Darlinghurst NSW 2010  
 AUSTRALIA

T +61 2 8668 0000  
 F +61 2 8668 0066  
 turnerinfo.com.au



**NOTES**  
 THIS DRAWING IS COPYRIGHT © OF TURNER. NO REPRODUCTION WITHOUT PERMISSION. UNLESS NOTED OTHERWISE THIS DRAWING IS NOT FOR CONSTRUCTION. ALL DIMENSIONS AND LEVELS ARE TO BE CHECKED ON SITE PRIOR TO THE COMMENCEMENT OF WORK. INFORM TURNER OF ANY DISCREPANCIES FOR CLARIFICATION BEFORE PROCEEDING WITH WORK. DRAWINGS ARE NOT TO BE SCALED. USE ONLY DIMENSIONS SHOWN ON DRAWING. REFER TO CONSULTANT DOCUMENTATION FOR FURTHER INFORMATION. DWG, PC AND BIM FILES ARE UNCONTROLLED DOCUMENTS AND ARE ISSUED FOR INFORMATION ONLY.

**CLIENT**  
 Dasco Property Development Services Pty Ltd

**LEGEND**  
 Amendments to the approved SSDA (SSD-68708456 dated 19th August 2025)

AC Condenser Units

Rev	Date	Approved by	Revision Notes
E	11/03/26	TK	For S 455 Submission - Response to Department #2
D	03/02/26	TK	For S 455 Submission - Response to Department
C	06/11/26	TK	For S 455 Submission
B	15/09/25	TK	For Information
A	11/07/24	TK	For Amending SSDA Submission

**Project Title**  
 BEECROFT ROAD  
 242-244 Beecroft Road, Epping

**Drawing Title**  
 GA Plans  
 Level 14

**Scale**  
 1:200 @A1, 50% @A3

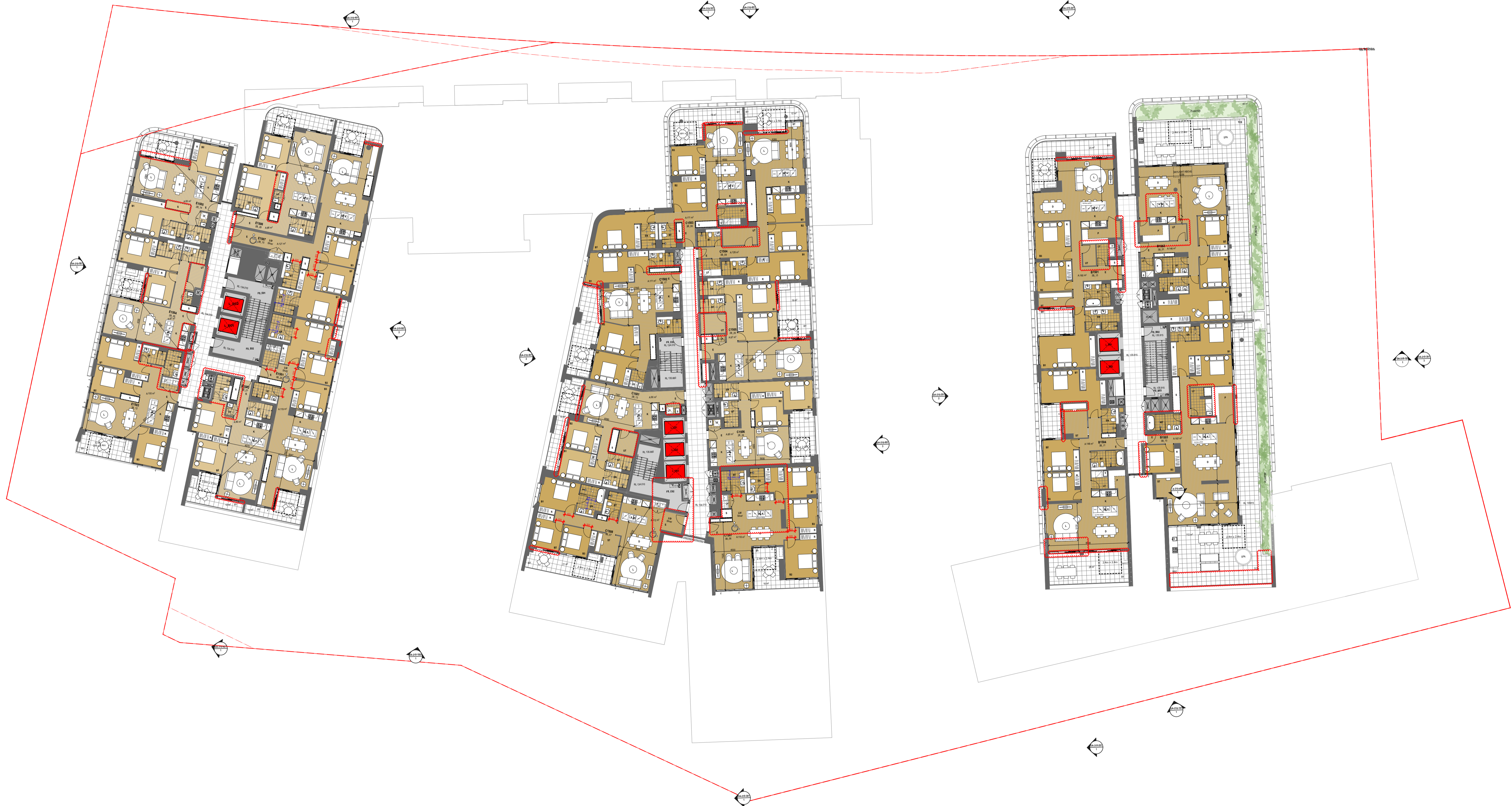
**Project No.** 21044  
**Dwg No.** DA-110-080

**Drawn by** JL  
**Rev** E

**TURNER**

Level 7 ONE Oxford Street  
 Darlinghurst NSW 2010  
 AUSTRALIA

T +61 2 8668 0000  
 F +61 2 8668 0066  
 turnerco.com.au



**NOTES**  
 THIS DRAWING IS COPYRIGHT © OF TURNER. NO REPRODUCTION WITHOUT PERMISSION. UNLESS NOTED OTHERWISE THIS DRAWING IS NOT FOR CONSTRUCTION. ALL DIMENSIONS AND LEVELS ARE TO BE CHECKED ON SITE PRIOR TO THE COMMENCEMENT OF WORK. INFORM TURNER OF ANY DISCREPANCIES FOR CLARIFICATION BEFORE PROCEEDING WITH WORK. DRAWINGS ARE NOT TO BE SCALED. USE ONLY DIMENSIONS SHOWN ON DRAWING. REFER TO CONSULTANT DOCUMENTATION FOR FURTHER INFORMATION. DWG, PC AND BIM FILES ARE UNCONTROLLED DOCUMENTS AND ARE ISSUED FOR INFORMATION ONLY.

**CLIENT**  
 Dasco Property Development Services Pty Ltd

**LEGEND**  
 Amendments to the approved SSDA (SSD-68708456 dated 19th August 2025)

AC Condenser Units

Rev	Date	Approved by	Revision Notes
E	11/03/26	TK	For S 455 Submission - Response to Department #2
D	03/02/26	TK	For S 455 Submission - Response to Department
C	06/11/26	TK	For S 455 Submission
B	15/09/25	TK	For Information
A	11/07/24	TK	For Amending SSDA Submission

**Project Title**  
 BEECROFT ROAD  
 242-244 BEECROFT ROAD, EPPING

**Drawing Title**  
 GA Plans  
 Level 15

**Scale**  
 1:200 @A1, 50% @A3

**Project No.** 21044  
**Dwg No.** DA-110-090

**Drawn by** JL  
**Rev** E

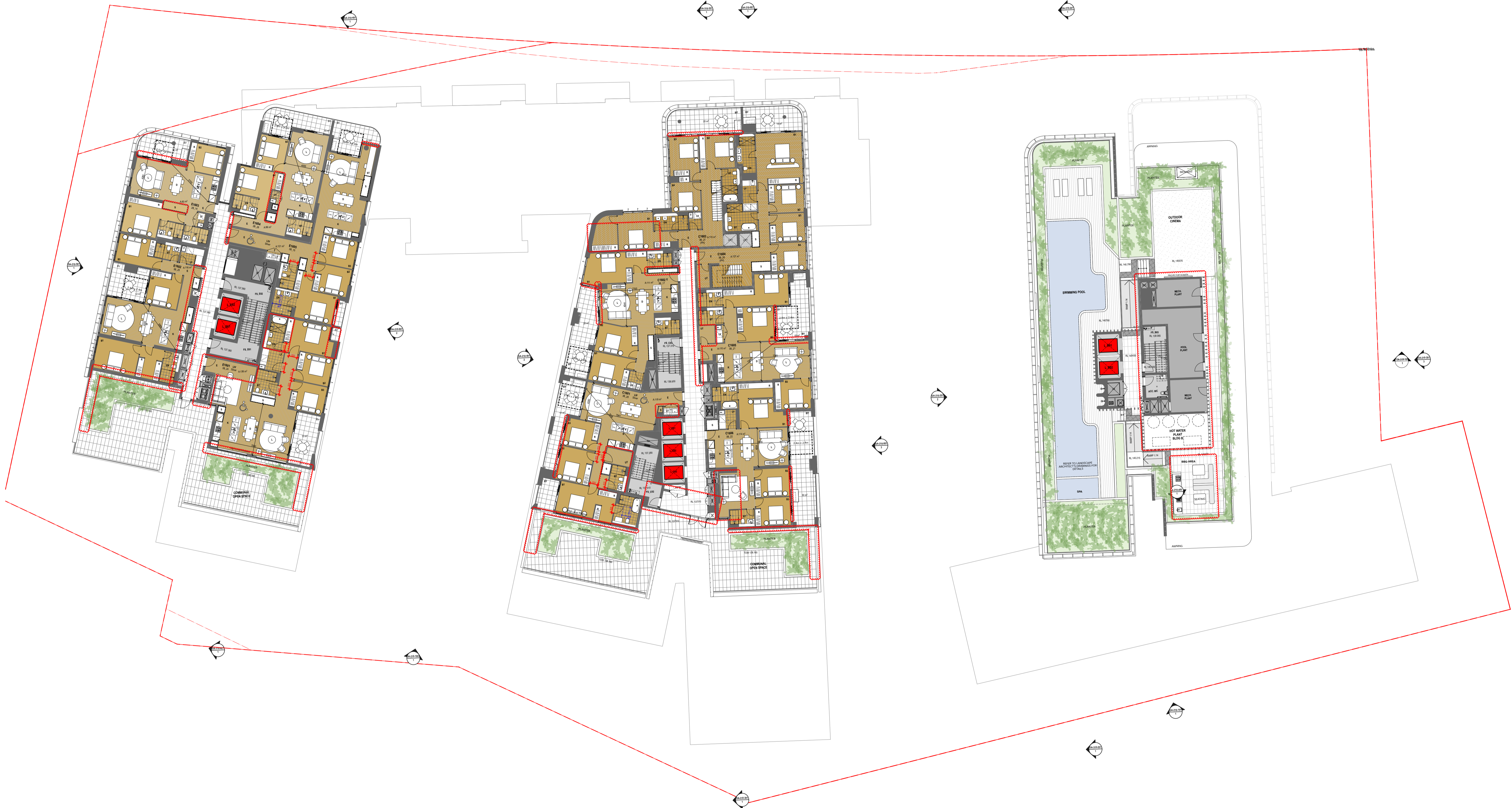
**North**

**TURNER**

Level 7 ONE Oxford Street  
 Darlinghurst NSW 2010  
 AUSTRALIA

T +61 2 8668 0000  
 F +61 2 8668 0066  
 turnerinfo.com.au

DLCC Quality Endorsed Company (ISO 9001:2015, Registration Number 25476)  
 Nominated Architect Nicholas Turner (NSR, APN 90 394 394 811)



**NOTES**  
 THIS DRAWING IS COPYRIGHT © OF TURNER. NO REPRODUCTION WITHOUT PERMISSION. UNLESS NOTED OTHERWISE THIS DRAWING IS NOT FOR CONSTRUCTION. ALL DIMENSIONS AND LEVELS ARE TO BE CHECKED ON SITE PRIOR TO THE COMMENCEMENT OF WORK. INFORM TURNER OF ANY DISCREPANCIES FOR CLARIFICATION BEFORE PROCEEDING WITH WORK. DRAWINGS ARE NOT TO BE SCALED. USE ONLY DIMENSIONS SHOWN. REFER TO CONSULTANT DOCUMENTATION FOR FURTHER INFORMATION. IFC AND BIM FILES ARE UNCONTROLLED DOCUMENTS AND ARE ISSUED FOR INFORMATION ONLY.

**CLIENT**  
 Dasco Property Development Services Pty Ltd

**LEGEND**  
 Amendments to the approved SSDA (SSD-68708456 dated 19th August 2025)

AC Condenser Units

Rev	Date	Approved by	Revision Notes
E	11/03/26	TK	For S.455 Submission - Response to Department #2
D	03/02/26	TK	For S.455 Submission - Response to Department
C	06/11/26	TK	For S.455 Submission
B	15/09/25	TK	For Information
A	11/07/24	TK	For Amending SSDA Submission

**Project Title**  
 BEECROFT ROAD  
 242-244 BEECROFT ROAD, EPPING

**Drawing Title**  
 GA Plans  
 Level 16

**Scale**  
 1:200 @A1, 50% @A3

**Project No.** 21044

**Dwg No.** DA-110-110

**Drawn by** JL

**Rev** E

**North**

**TURNER**

Level 7 ONE Oxford Street  
 Darlinghurst NSW 2010  
 AUSTRALIA

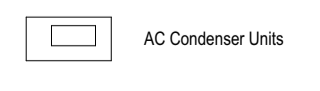
T +61 2 8668 0000  
 F +61 2 8668 0066  
 turnerinfo.com.au



**NOTES**  
 THIS DRAWING IS COPYRIGHT © OF TURNER. NO REPRODUCTION WITHOUT PERMISSION. UNLESS NOTED OTHERWISE THIS DRAWING IS NOT FOR CONSTRUCTION. ALL DIMENSIONS AND LEVELS ARE TO BE CHECKED ON SITE PRIOR TO THE COMMENCEMENT OF WORK. IN THE EVENT OF ANY DISCREPANCIES FOR CLARIFICATION BEFORE PROCEEDING WITH WORK, DRAWINGS ARE NOT TO BE SCALED. USE ONLY DIMENSIONS SHOWN ON DRAWING. REFER TO CONSULTANT DOCUMENTATION FOR FURTHER INFORMATION. IFC AND BIM FILES ARE UNCONTROLLED DOCUMENTS AND ARE ISSUED FOR INFORMATION ONLY.

**CLIENT**  
**Dasco Property Development Services Pty Ltd**

**LEGEND**  
 Amendments to the approved SSDA (SSD-68708456 dated 19th August 2025)



Rev	Date	Approved by	Revision Notes
E	11/03/26	TK	For S455 Submission - Response to Department #2
D	03/02/26	TK	For S455 Submission - Response to Department
C	06/11/26	TK	For S455 Submission
B	15/09/25	TK	For Information
A	11/07/24	TK	For Amending SSDA Submission

**Project Title**  
**BEECROFT ROAD**  
 242-244 Beecroft Road, Epping

**Drawing Title**  
**GA Plans**  
**Level 17**

**Scale**  
 1:200 @A1, 50% @A3

**Project No.** 21044

**Drawn by** JL

**Checked by** E

**Dwg No.** DA-110-120

**Rev** E

**North**

**TURNER**

Level 7 ONE Oxford Street  
 Darlinghurst NSW 2010  
 AUSTRALIA

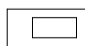
T +61 2 8668 0000  
 F +61 2 8668 0066  
 turner@tdo.com.au



**NOTES**  
 THIS DRAWING IS COPYRIGHT © OF TURNER. NO REPRODUCTION WITHOUT PERMISSION. UNLESS NOTED OTHERWISE THIS DRAWING IS NOT FOR CONSTRUCTION. ALL DIMENSIONS AND LEVELS ARE TO BE CHECKED ON SITE PRIOR TO THE COMMENCEMENT OF WORK. IN THE EVENT OF ANY DISCREPANCIES FOR CLARIFICATION BEFORE PROCEEDING WITH WORK, DRAWINGS ARE NOT TO BE SCALED. USE ONLY FIGURED DIMENSIONS. REFER TO CONSULTANT DOCUMENTATION FOR FURTHER INFORMATION. IFC AND BIM FILES ARE UNCONTROLLED DOCUMENTS AND ARE ISSUED FOR INFORMATION ONLY.

**CLIENT**  
 Dasco Property Development Services Pty Ltd

**LEGEND**  
 Amendments to the approved SSDA (SSD-68708456 dated 19th August 2025)

 AC Condenser Units

Rev	Date	Approved by	Revision Notes
E	11/03/26	TK	For S.455 Submission - Response to Department #2
D	03/02/26	TK	For S.455 Submission - Response to Department
C	06/11/26	TK	For S.455 Submission
B	15/09/25	TK	For Information
A	11/07/24	TK	For Amending SSDA Submission

**Project Title**  
 BEECROFT ROAD  
 242-244 BEECROFT ROAD, EPPING

**Drawing Title**  
 GA Plans  
 Roof Level


**Scale**  
 1:200 @A1, 50% @A3

**Project No.** 21044

**Dwg No.** DA-110-130

**Rev** E

**Drawn by** JL

**North** 

**TURNER**

Level 7 ONE Oxford Street  
 Darlinghurst NSW 2010  
 AUSTRALIA

T +61 2 8668 0000  
 F +61 2 8668 0066  
 turner@tdo.com.au