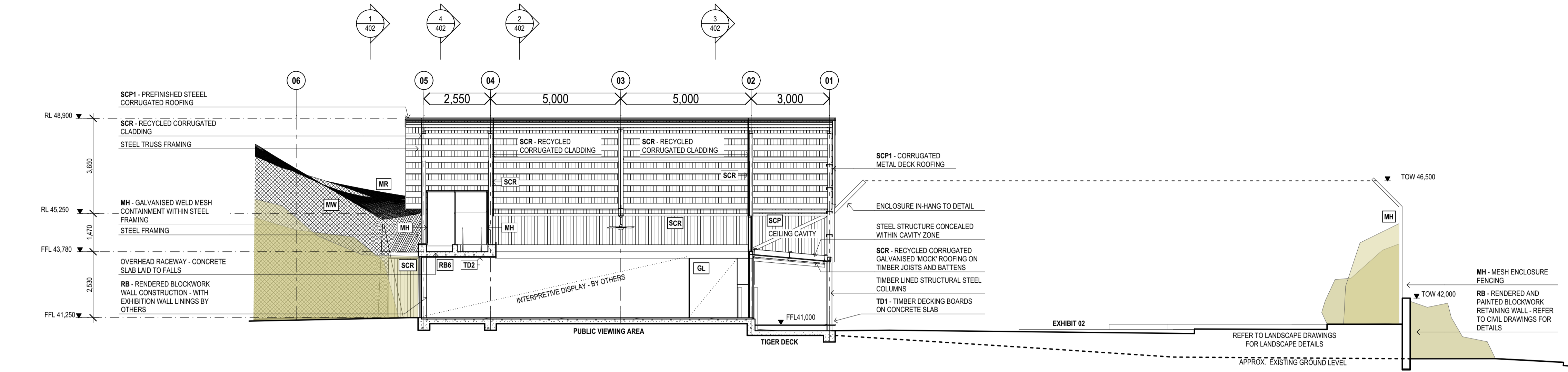
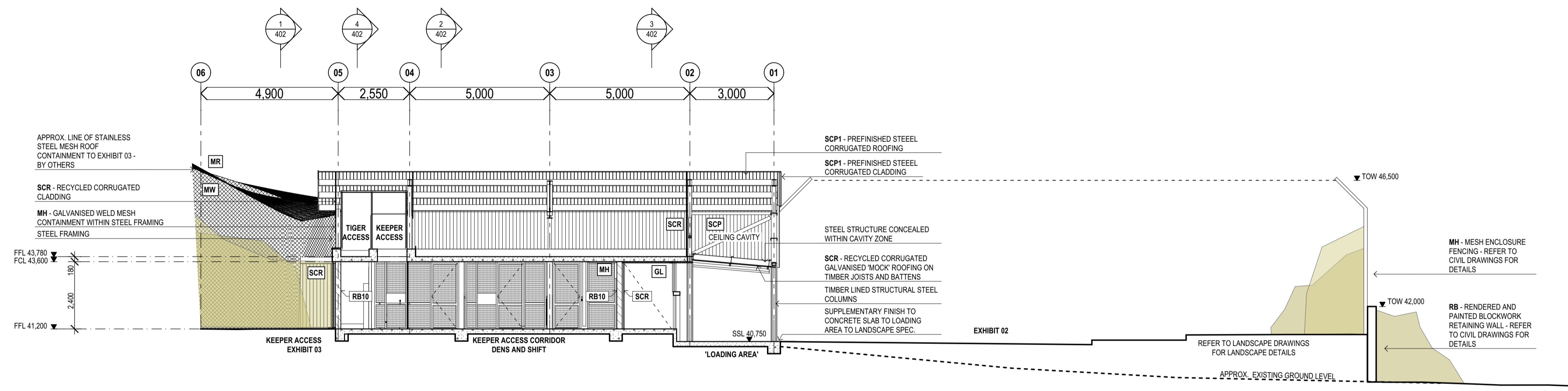


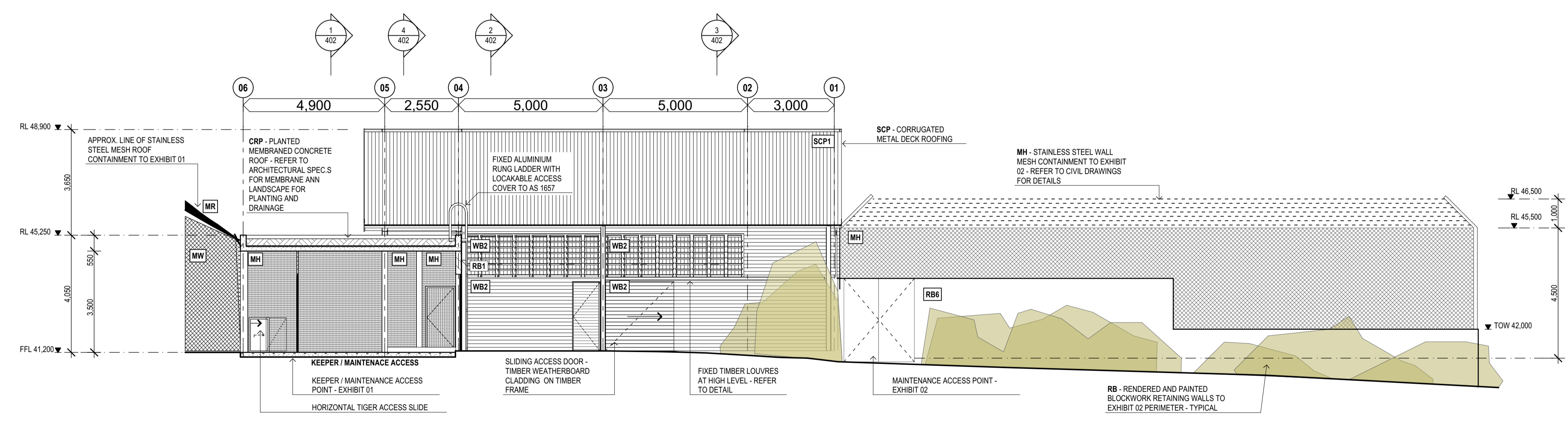
KEY	
ACP	ALUMINIUM COMPOSITE PANEL, PREFINISHED
BB	BAMBOO CLADDING
BP	BAMBOO WOVEN PANEL
BBS	BAMBOO SCREEN
CMN	CAMOUFLAGE NETTING
CNV	CANVAS CLADDING
CONC	CONCRETE
CT	CEILING TILE
CRB	CONCRETE ROOF MEMBRANED, PEBBLE BALLAST
CRP	CONCRETE ROOF MEMBRANED, PLANTED
FCC	COMPRESSED FIBRE CEMENT PANEL, PAINT FINISH
FCP	FIBRE CEMENT PANEL, PAINT FINISH
FCL	FIBRE CEMENT PANEL, RENDERED FINISH
GL	GLAZING
LN	LINOLEUM
MK	MOCK ROCK
MH	STEEL MESH, GALVANISED
MR	TENSILE STAINLESS STEEL MESH - ROOF
MW	TENSILE STAINLESS STEEL MESH - WALL
NET	NYLON BIRD NETTING
PA	PAINT FINISH
PB	PLASTERBOARD, PAINT FINISH
PL	PLASTIC COMPOSITE PANEL
PC	POLYCARBONATE CLADDING
PV	PAVING, REFER TO LANDSCAPE DRAWINGS + SPEC.
RB	RENDERED BLOCKWORK, PAINT FINISH
RD	REED WOVEN CLADDING
SCG	STEEL CLADDING, GALVANISED
SCI	STEEL CLADDING, INSULATED PANEL PREFINISHED
SCM	STEEL CLADDING, RECYCLED/WEATHERED ON MEMBRANED SUBSTRATE
SCP	STEEL CLADDING, PREFINISHED
SCR	STEEL CLADDING, RECYCLED/WEATHERED
SF	STEEL FLOOR, CHECKER PLATE
SS	STAINLESS STEEL
SP	WEATHERED STEEL PLATE
TB	TIMBER CLADDING
TD	TIMBER DECKING / FLOORING
TL	TILE FINISH
TR	THATCH ROOF ON MEMBRANE
TT	TERRACOTTA ROOF TILE FINISH
VIN	VINYL
WB	WEATHERBOARDS
ZC	ZINC CLADDING



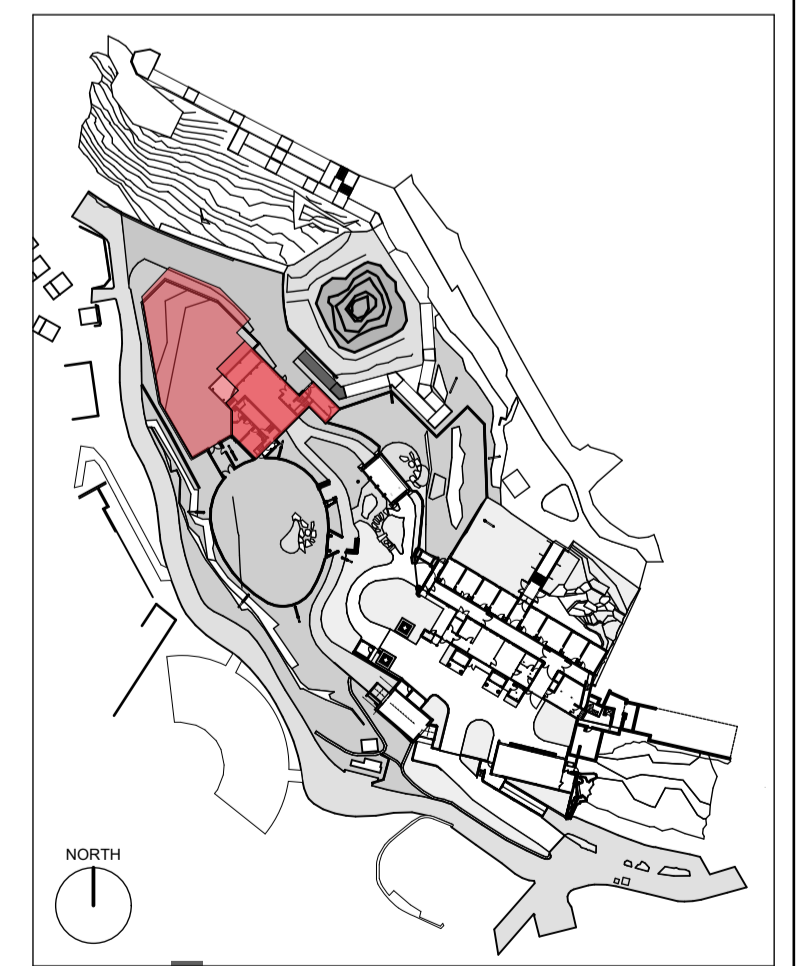
1 SECTION - PUBLIC VIEWING AREAS
1:100



2 SECTION - KEEPER AND TIGER AREAS
1:100



3 EAST ELEVATION
1:100



REV	DESCRIPTION	DATE	REV	DESCRIPTION	DATE	LANDSCAPE ARCHITECT	MECHANICAL ENGINEER	ELECTRICAL / COMMS ENGINEER	ESD CONSULTANT	LEGEND	NORTH	CLIENT	PROJECT TITLE	TITLE	DRAWN	PLOT DATE	SCALE @A1
01	ISSUED FOR PLANNING APPROVAL	13/05/15				Green & Dale Associates PO Box 351 Warrandyte Victoria 3113 tel: 03 9844 5422	Shelmerdines 55 Hume St, Crows Nest NSW 2065 tel: 02 9436 3021	Shelmerdines 55 Hume St, Crows Nest NSW 2065 tel: 02 9436 3021	Surface Design Suite 11 03, 68 York Street Sydney, NSW 2000 tel: 02 9249 1400			TARONGA CONSERVATION SOCIETY AUSTRALIA	TARONGA ZOO - SUMATRAN TIGER	MIDPOINT BUILDING SECTIONS	HC	9/09/2015	1:100
02	REDUCED BUILDING FOOTPRINT FOR APPROVAL	09/09/15				Taylor Thomson Whiting Level 3, 48 Chandos St St Leonards, NSW 2065 tel: 02 9439 7288	SDA Structures 48 Alfred St, Milsons Point Rozelle, NSW 2039 tel: 02 9610 6911	Whipps Wood 48 Alfred St, Milsons Point NSW 2061 tel: 02 8923 8444						AN	14/07	A - D - A - 4 0 3	02
													lahznimmo architects Suite 404, Flourmill Studios 3 Gladstone St Newtown NSW 2042 Australia T 02 9550 5200 F 02 9550 5233 www.lahznimmo.com		SCALE CHECK: 5 10		