

Copyright
 This drawing shows design features and elements of a design prepared by
 Fulton Trotter Architects and is to be used only for work authorised in
 writing by the designers. It cannot be copied directly or indirectly, in whole
 or in part, nor shall it be used for any other building purposes. Unauthorised
 use will be considered an infringement of these rights.

BUILDING INFORMATION
 NCC Building Classification: NCC BUILDING
 CLASSIFICATION
 NCC Construction Type: NCC CONSTRUCTION
 TYPE

PLAN LEGEND

- Door Label
- Window Label
- External Wall Type Label
- Internal Wall Type Label
- Design RL
- Check on Site RL

- CRASH RAIL LEGEND**
- T1 30KN Rhino Stop Type 1, 30KN Crashrail
 - T4 30KN Rhino Stop Type 4, 30KN Crashrail
 - T1 240KN Rhino Stop Type 1, 240KN Crashrail
 - 2MH 30KN Rhino Stop 2M High Screen with integrated 30KN Crashrail
 - 2MH 240KN Rhino Stop 2M High Screen with integrated 240KN Crashrail
 - 1.1MH 30KN Rhino Stop 1.1M High Screen with integrated 30KN Crashrail

- METALWORK & MISC LEGEND**
- MW01 Handrail 1000 high with two horizontal CHS rails see ACD4801
 - MW04 Handrail 1000 high with one horizontal CHS rail see ACD4801
 - MW05 Handrail - access ramp see ACD4801
 - MW05 op2 Handrail - access ramp option 2 see ACD4801
 - MW06 Handrail fixed to walls or steel columns
 - MW07 Central handrail to stairs 1, 2 & 3
 - MW08-900 Bolts 900 high
 - MW08-1200 Bolts 1200 high
 - COL Column
 - DP Downpipe
 - FHR Fire hose reel
 - P1 Light Posts

REV.	DESCRIPTION	DATE	Checked by
M	Updated Screen	15/04/16	OD
L	Lift Foyers Updated	08/04/16	OD
K	Revised Construction Issue	02/02/16	OD
J	Revised Drawing Issue	22/01/16	OD
I	Revised Drawing Issue	23/12/15	OD
H	Revised Construction Issue	05/11/15	OD
G	Revised Construction Issue	02/10/15	OD
F	Dimension Update	04/09/15	JH
E	Client Approval	26/08/15	JH
D	Final Client Approval	11/08/15	JH
C	Cardno Issue	07/08/15	JH
B	General Revision Issue	31/07/15	JH
A	Construction Issue	22/07/15	JH

fulton trotter
 ARCHITECTS

BRISBANE 18 Fortman Lane
 PO Box 353
 Spring Hill, QLD 4004

BRISBANE SYDNEY

DIRECTORS
 Andrew Armstrong raia NSW 6321 QLD 2614
 Greg Isaac raia NSW 6855 QLD 2920
 Mark Trotter raia VIC 17691 NSW 4421 QLD 1870
 Paul Trotter raia NSW 7177 QLD 2646
 Robert Wesener raia NSW 5802 QLD 2633

www.fultontrotter.com.au

CONSTRUCTION DOCUMENTATION

WOOLLAM CONSTRUCTIONS

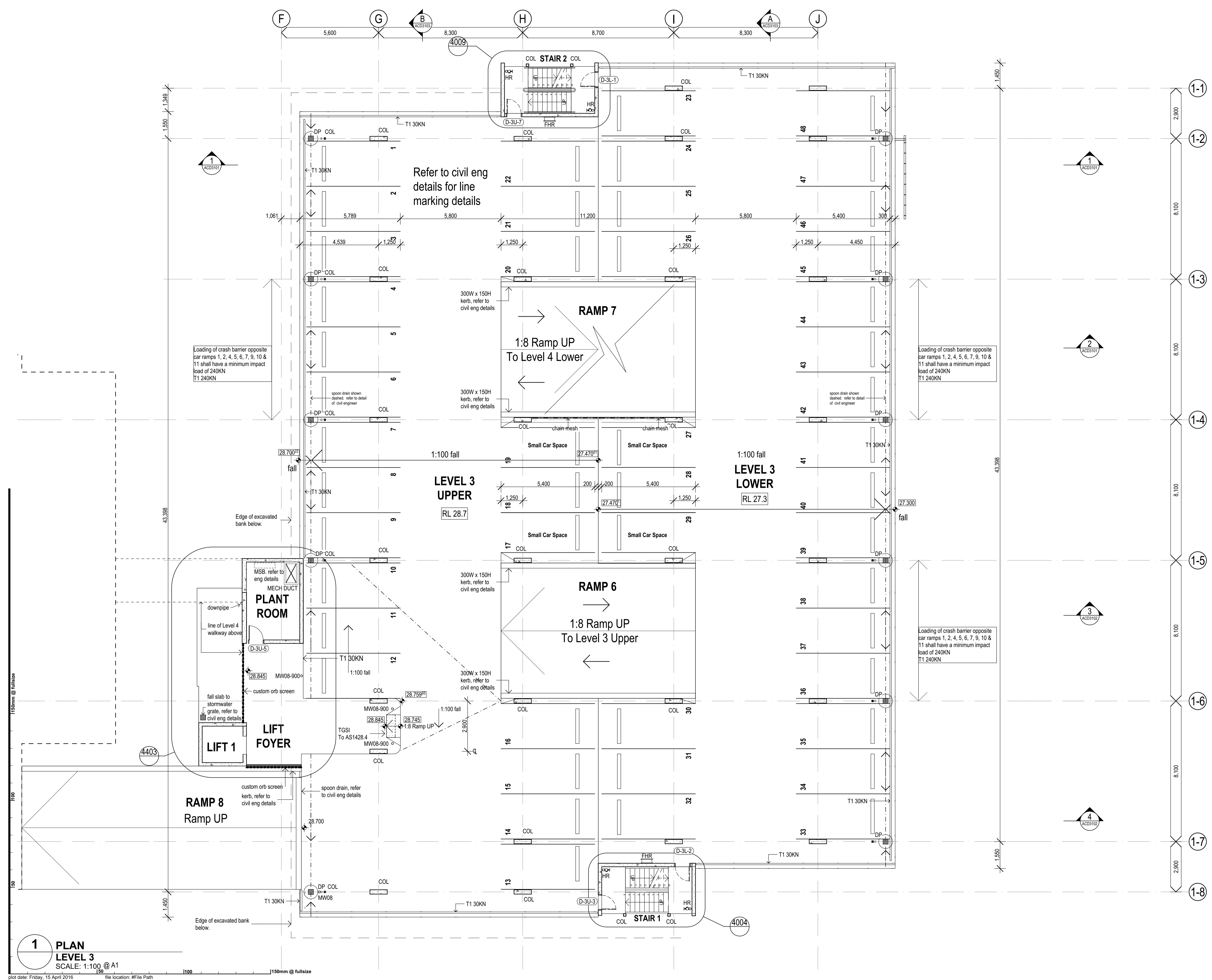
Lismore Base Hospital Carpark

Uralba Street and Dalziell Street
 Lismore, QLD

LEVEL 3 - FLOOR PLAN

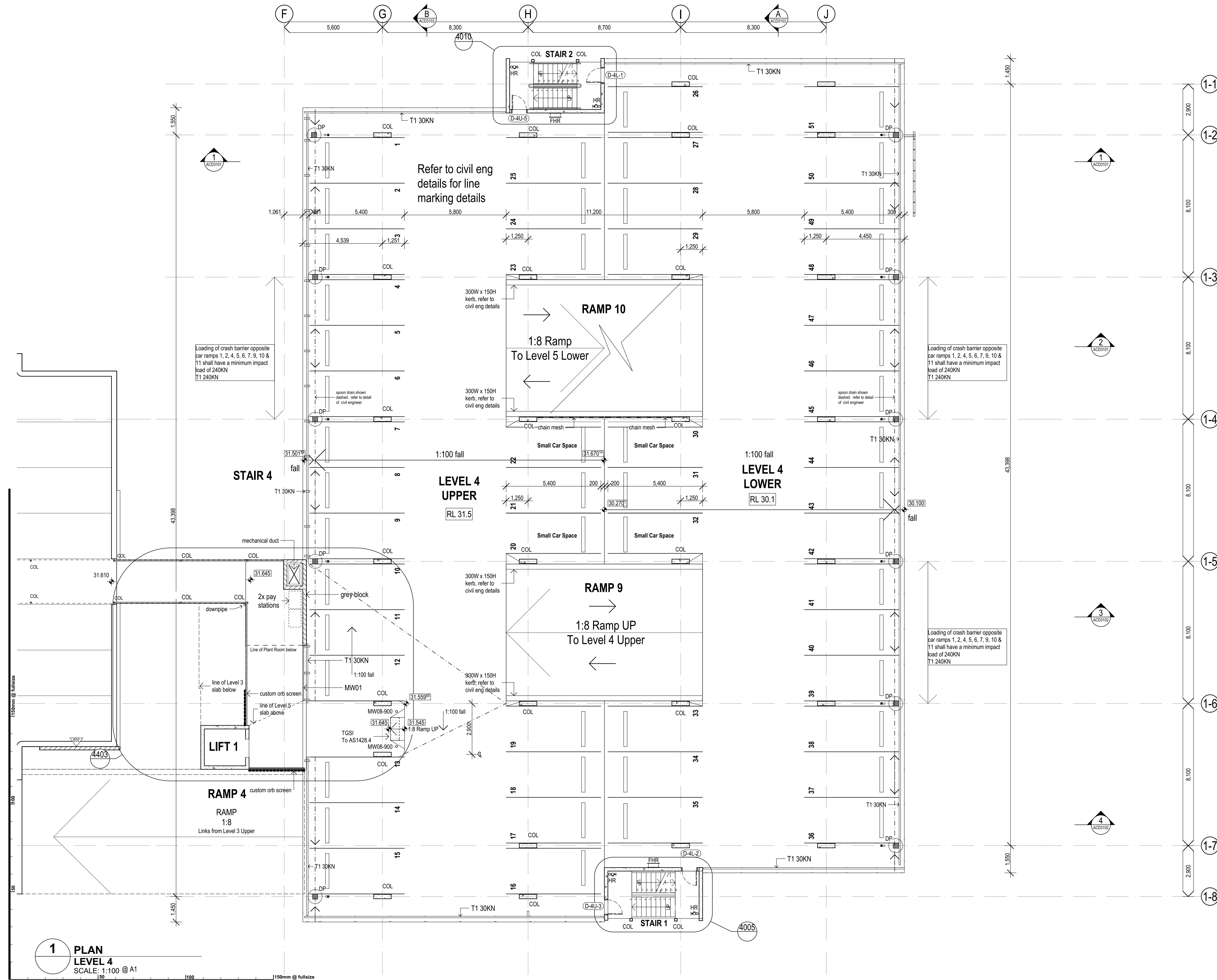
Figured dimensions take precedence over
 scale dimensions. Contractors must verify
 all dimensions on site before commencing
 any work or making shop drawings.

PROJECT NUMBER	DIRECTOR	CHECKED
3351L101	PT	
DRAWING NUMBER	REVISION	
ACD2003	M	



1 PLAN
LEVEL 3
 SCALE: 1:100 @ A1

plot date: Friday, 15 April 2016
 file location: #File Path



1 PLAN
LEVEL 4
 SCALE: 1:100 @ A1

plot date: Friday, 15 April 2016 file location: #File Path 150mm @ fullsize 1100 150mm @ fullsize

Copyright
 This drawing shows design features and elements of a design prepared by
 Fulton Trotter Architects and is to be used only for work authorised in
 writing by the designers. It cannot be copied directly or indirectly, in whole
 or in part, nor shall it be used for any other building purposes. Unauthorised
 use will be considered an infringement of these rights.

BUILDING INFORMATION
 NCC Building Classification: NCC BUILDING
 CLASSIFICATION
 NCC Construction Type: NCC CONSTRUCTION
 TYPE

PLAN LEGEND

- (D-00) Door Label
- (W-00) Window Label
- (E-00) External Wall Type Label
- (I-00) Internal Wall Type Label
- (0.00) Design RL
- ⊕ 0.00 Check on Site RL

- CRASH RAIL LEGEND**
- T1 30KN Rhino Stop Type 1, 30KN Crashrail
 - T4 30KN Rhino Stop Type 4, 30KN Crashrail
 - T1 240KN Rhino Stop Type 1, 240KN Crashrail
 - 2MH 30KN Rhino Stop 2M High Screen with integrated 30KN Crashrail
 - 2MH 240KN Rhino Stop 2M High Screen with integrated 240KN Crashrail
 - 1.1MH 30KN Rhino Stop 1.1M High Screen with integrated 30KN Crashrail

- METALWORK & MISC LEGEND**
- MW01 Handrail 1000 high with two horizontal CHS rails see ACD4801
 - MW04 Handrail 1000 high with one horizontal CHS rail see ACD4801
 - MW05 Handrail - access ramp see ACD4801
 - MW05 op2 Handrail - access ramp option 2 see ACD4801
 - MW06 Handrail fixed to walls or steel columns
 - MW07 Central handrail to stairs 1, 2 & 3
 - MW08-900 Bolards 900 high
 - MW08-1200 Bolards 1200 high
 - COL Column
 - DP Downpipe
 - FHR Fire hose reel
 - P1 Light Posts

REV	DESCRIPTION	DATE	Checked by
N	Updated Screen	15/04/16	OD
M	Lift Foyers Updated	08/04/16	OD
L	Revised Construction Issue 2	05/02/16	OD
K	Revised Construction Issue	02/02/16	OD
J	Revised Drawing Issue	22/01/16	OD
I	Revised Drawing Issue	23/12/15	OD
H	Revised Construction Issue	05/11/15	OD
G	Revised Construction Issue	02/10/15	OD
F	Dimension Update	04/09/15	JH
E	Client Approval	26/08/15	JH
D	Final Client Approval	11/08/15	JH
C	Carndo Issue	07/08/15	JH
B	General Revision Issue	31/07/15	JH
A	Construction Issue	22/07/15	JH

fulton trotter
 ARCHITECTS

BRISBANE 18 Fortman Lane
 PO Box 353
 Spring Hill, QLD 4004

BRISBANE SYDNEY

t. (07) 3291 1511
 f. (07) 3291 1500
 e. brisbane@fultontrotter.com.au

DIRECTORS
 Andrew Armstrong raia NSW 6321 QLD 2614
 Greg Isaac raia NSW 6855 QLD 2920
 Mark Trotter fraia VIC 17691 NSW 4421 QLD 1870
 Paul Trotter fraia NSW 7177 QLD 2646
 Robert Wesener raia NSW 5802 QLD 2633

www.fultontrotter.com.au

CONSTRUCTION DOCUMENTATION

WOOLLAM CONSTRUCTIONS

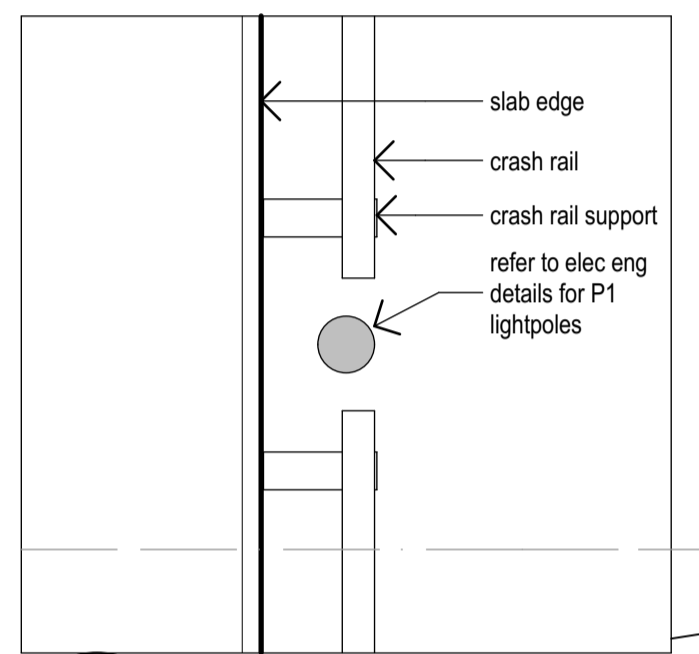
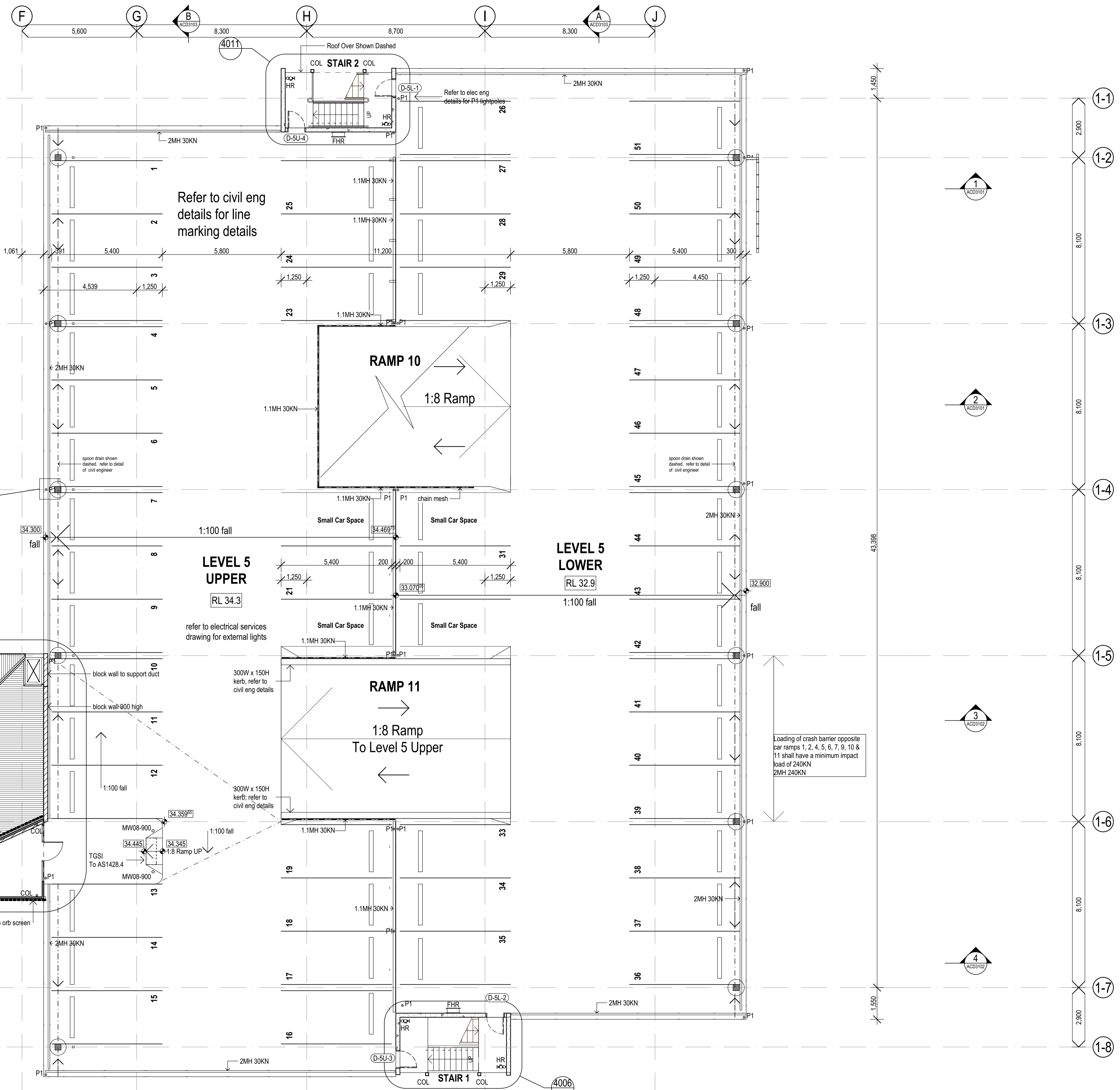
Lismore Base Hospital Carpark

Uralba Street and Dalziell Street
 Lismore, QLD

LEVEL 4 - FLOOR PLAN

Figured dimensions take precedence over
 scale dimensions. Contractors must verify
 all dimensions on site before commencing
 any work or making shop drawings.

PROJECT NUMBER	DIRECTOR	CHECKED
3351LI01	PT	
DRAWING NUMBER	REVISION	
ACD2004		N



DETAIL PLAN
Light Pole Setout
SCALE: 1:20

1 PLAN
LEVEL 5
SCALE: 1:100 @ A1

Copyright
This drawing shows design features and elements of a design prepared by Fulton Trotter Architects and is to be used only for work authorised in writing by the designers. It cannot be copied directly or indirectly, in whole or in part, nor shall it be used for any other building purposes. Unauthorised use will be considered an infringement of these rights.

BUILDING INFORMATION
NCC Building Classification: NCC BUILDING
CLASSIFICATION
NCC Construction Type: NCC CONSTRUCTION TYPE

PLAN LEGEND

- (D-00) Door Label
- (W-00) Window Label
- (EW) External Wall Type Label
- (IW) Internal Wall Type Label
- (0.00) Design RL
- Check on Site RL

- CRASH RAIL LEGEND**
- T1 30KN Rhino Stop Type 1, 30KN Crashrail
 - T4 30KN Rhino Stop Type 4, 30KN Crashrail
 - T1 240KN Rhino Stop Type 1, 240KN Crashrail
 - 2MH 30KN Rhino Stop 2M High Screen with integrated 30KN Crashrail
 - 2MH 240KN Rhino Stop 2M High Screen with integrated 240KN Crashrail
 - 1.1MH30KN Rhino Stop 1.1M High Screen with integrated 30KN Crashrail

- METALWORK & MISC LEGEND**
- MW01 Handrail 1000 high with two horizontal CHS rails see ACD4801
 - MW04 Handrail 1000 high with one horizontal CHS rail see ACD4801
 - MW05 Handrail - access ramp see ACD4801
 - MW05 op2 Handrail - access ramp option 2 see ACD4801
 - MW07 Handrail fixed to walls or steel columns
 - MW07 Central handrail to stairs 1, 2 & 3
 - MW08-900 Bolards 900 high
 - MW08-1200 Bolards 1200 high
 - COL Column
 - DP Downpipe
 - FHR Fire hose reel
 - P1 Light Posts

REV.	DESCRIPTION	DATE	Checked by
M	Updated Screen	15/04/16	OD
L	Lift Foyers Updated	08/04/16	OD
K	Revised Construction Issue	02/02/16	OD
J	Revised Drawing Issue	22/01/16	OD
I	Revised Drawing Issue	23/12/15	OD
H	Revised Construction Issue	05/11/15	OD
G	Revised Construction Issue	02/10/15	OD
F	Dimension Update	04/09/15	JH
E	Client Approval	26/08/15	JH
D	Final Client Approval	11/08/15	JH
C	Cardno Issue	07/08/15	JH
B	General Revision Issue	31/07/15	JH
A	Construction Issue	22/07/15	JH

fulton trotter
ARCHITECTS

BRISBANE 18 Fortman Lane
PO Box 353
Spring Hill, QLD 4004

BRISBANE
SYDNEY

DIRECTORS
Andrew Armstrong raia NSW 6321 QLD 2614
Greg Isaac raia NSW 6855 QLD 2920
Mark Trotter raia VIC 17691 NSW 4421 QLD 1870
Paul Trotter raia NSW 7177 QLD 2646
Robert Wesener raia NSW 5802 QLD 2633

www.fultontrotter.com.au

CONSTRUCTION DOCUMENTATION

WOOLLAM CONSTRUCTIONS

Lismore Base Hospital Carpark

Uralba Street and Dalziell Street
Lismore, QLD

LEVEL 5 - FLOOR PLAN

Figured dimensions take precedence over scale dimensions. Contractors must verify all dimensions on site before commencing any work or making shop drawings.

PROJECT NUMBER	DIRECTOR	CHECKED
3351LI01	PT	
DRAWING NUMBER	REVISION	
ACD2005		M

Copyright
 This drawing shows design features and elements of a design prepared by
 Fulton Trotter Architects and is to be used only for work authorised in
 writing by the designers. It cannot be copied directly or indirectly, in whole
 or in part, nor shall it be used for any other building purposes. Unauthorised
 use will be considered an infringement of these rights.

ELEVATION MATERIAL LEGEND
 MA51 - BLOCKWORK - 200 SERIES - COLOURED / SMOOTH
 ARCH - SD

WALL TYPE LEGEND

E01 - OFF FORM CONCRETE
 E02 - BLOCKWORK

ELEVATION FINISH SCHEDULE

EX01 - Existing
 EX02 - Existing Fire Separation
 EX10 - (Type)
 SK01 - Light Green
 SK03 - Grey
 BL01 - (Finish / Colour)
 CB09 - Colorbond Deep Ocean - Corrugated
 CB26 - Colorbond Wallaby - Corrugated
 CC01 - Natural Grey
 CC02 - (Colour)
 Color_H02_8 (from Converted Object)
 GENERAL
 MF02 - HDG Steel
 MISSING

ELEVATION LEGEND

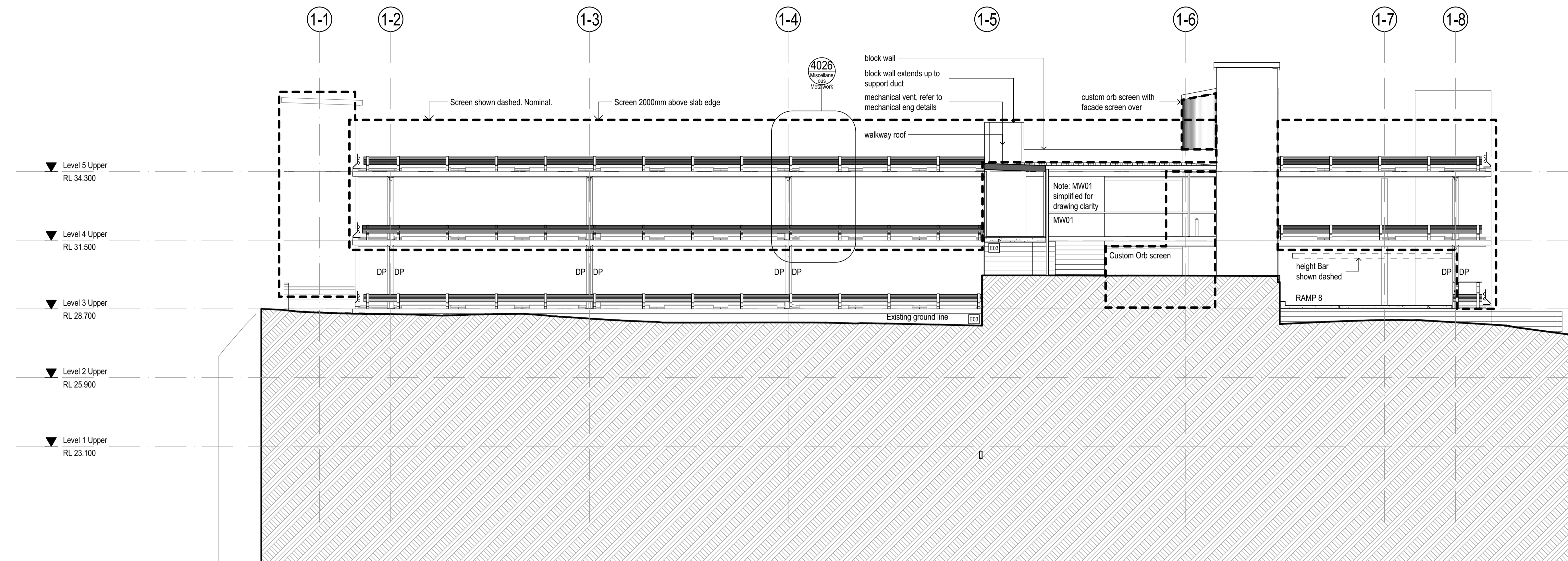
SK22 - Fence
 D-00 Door Label
 W-00 Window Label
 Material Code (Refer to Material Legend)
 Material / Finish Label
 Finish Code (Refer to Finishes Legend)

CRASH RAIL LEGEND

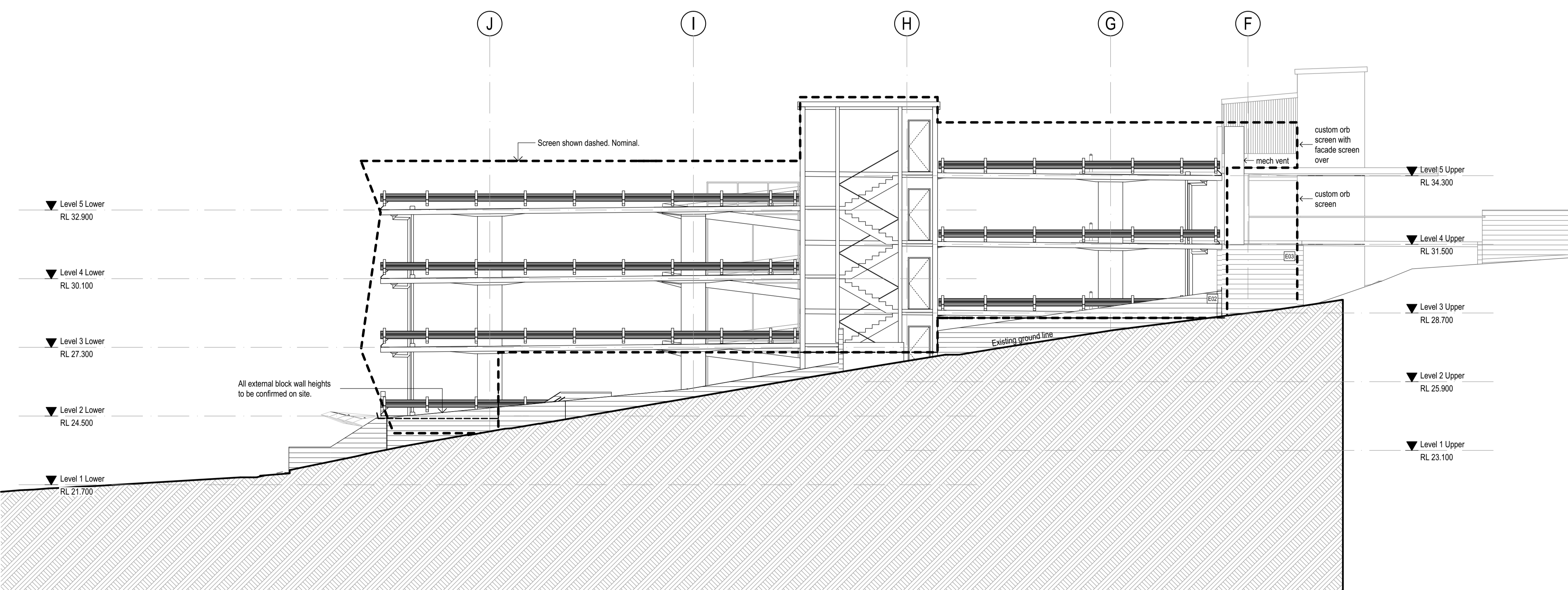
T1 30KN Rhino Stop Type 1, 30KN Crashrail
 T4 30KN Rhino Stop Type 4, 30KN Crashrail
 T1 240KN Rhino Stop Type 1, 240KN Crashrail
 2MH 30KN Rhino Stop 2M High Screen with integrated 30KN Crashrail
 2MH240KN Rhino Stop 2M High Screen with integrated 240KN Crashrail
 1.1MH30KN Rhino Stop 1.1M High Screen with integrated 30KN Crashrail

METALWORK & MISC LEGEND

MW01 Handrail 1000 high with two horizontal CHS rails see ACD4801
 MW04 Handrail 1000 high with one horizontal CHS rail see ACD4801
 MW05 Handrail - access ramp see ACD4801
 MW05 op2 Handrail - access ramp option 2 see ACD4801
 MW06 Handrail fixed to walls or steel columns
 MW07 Central handrail to stairs 1, 2 & 3
 MW08-900 Bollards 900 high
 MW08-1200 Bollards 1200 high
 COL Column
 DP Downpipe
 FHR Fire hose reel
 PT Light Posts



1 ELEVATION North
 SCALE: 1:100



2 ELEVATION East
 SCALE: 1:100

REV	DESCRIPTION	DATE	Checked by
K	Updated Screen	15/04/16	OD
J	Lift Foyers Updated	08/04/16	OD
I	Revised Construction Issue	02/02/16	OD
H	Revised Drawing Issue	22/01/16	OD
G	Revised Drawing Issue	23/12/15	OD
F	Revised Construction Issue	05/11/15	OD
E	Revised Construction Issue	02/10/15	OD
D	Client Approval	26/08/15	JH
C	Final Client Approval	11/08/15	
B	General Revision Issue	31/07/15	JH
A	Construction Issue	22/07/15	JH

fulton trotter ARCHITECTS

BRISBANE 18 Fortman Lane PO Box 353 Spring Hill, QLD 4004
 BRISBANE SYDNEY

DIRECTORS
 Andrew Armstrong raia NSW 6321 QLD 2614
 Greg Isaac raia NSW 6855 QLD 2920
 Mark Trotter fraia VIC 17691 NSW 4421 QLD 1870
 Paul Trotter fraia NSW 7177 QLD 2646
 Robert Wesener raia NSW 5802 QLD 2633

www.fultontrotter.com.au

CONSTRUCTION DOCUMENTATION

WOOLLAM CONSTRUCTIONS

Lismore Base Hospital Carpark

Uralba Street and Dalziell Street
 Lismore, QLD

ELEVATIONS 1

Figured dimensions take precedence over scale dimensions. Contractors must verify all dimensions on site before commencing any work or making shop drawings.

PROJECT NUMBER	DIRECTOR	CHECKED
3351LI01	PT	
DRAWING NUMBER	REVISION	
ACD3001		K

Copyright
 This drawing shows design features and elements of a design prepared by
 Fulton Trotter Architects and is to be used only for work authorised in
 writing by the designers. It cannot be copied directly or indirectly, in whole
 or in part, nor shall it be used for any other building purposes. Unauthorised
 use will be considered an infringement of these rights.

ELEVATION MATERIAL LEGEND
 MA51 - BLOCKWORK - 200 SERIES - COLOURED / SMOOTH
 ARCH - SD

WALL TYPE LEGEND

E01 - OFF FORM CONCRETE
 E02 - BLOCKWORK

ELEVATION FINISH SCHEDULE

EX01 - Existing
 EX02 - Existing Fire Separation
 EX10 - (Type)
 SK01 - Light Green
 SK03 - Grey
 BL01 - (Finish / Colour)
 CB09 - Colorbond Deep Ocean - Corrugated
 CB26 - Colorbond Wallaby - Corrugated
 CC01 - Natural Grey
 CC02 - (Colour)
 Color_H02_8 (from Converted Object)
 GENERAL
 MF02 - HDG Steel
 MISSING
 SK22 - Fence

ELEVATION LEGEND

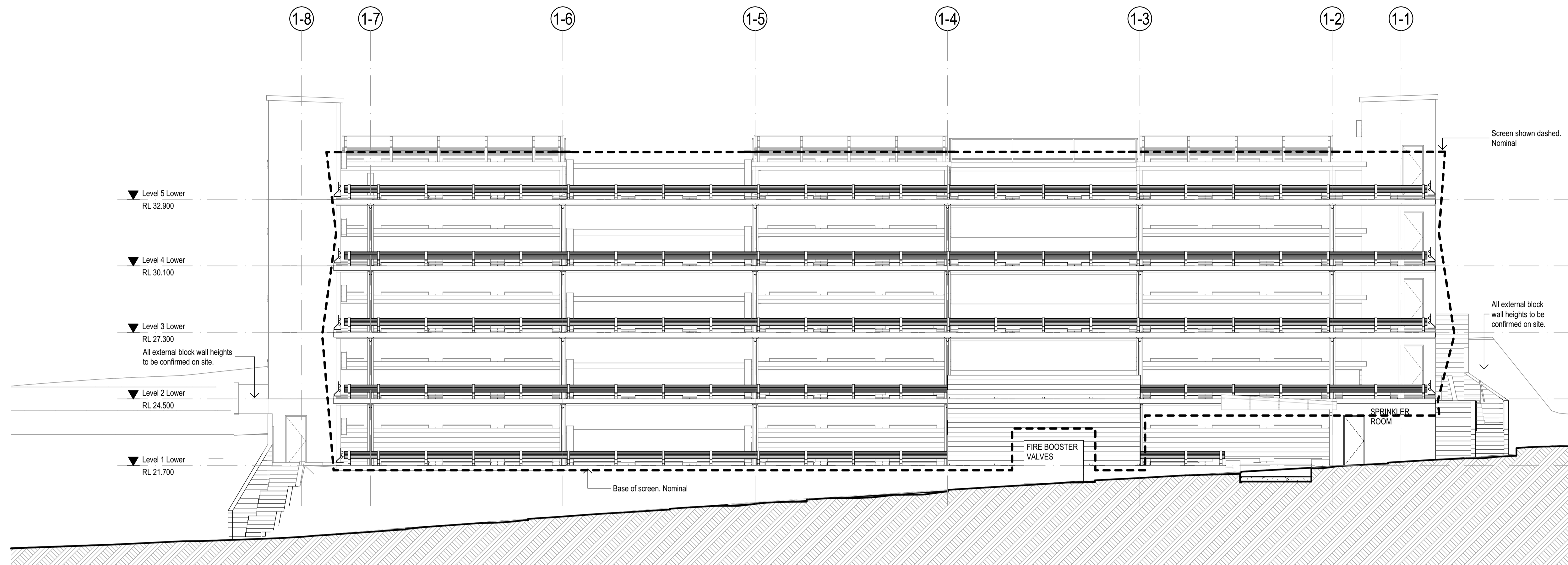
D-00 Door Label
 W-00 Window Label
 Material Code (Refer to Material Legend)
 Material / Finish Label
 Finish Code (Refer to Finishes Legend)

CRASH RAIL LEGEND

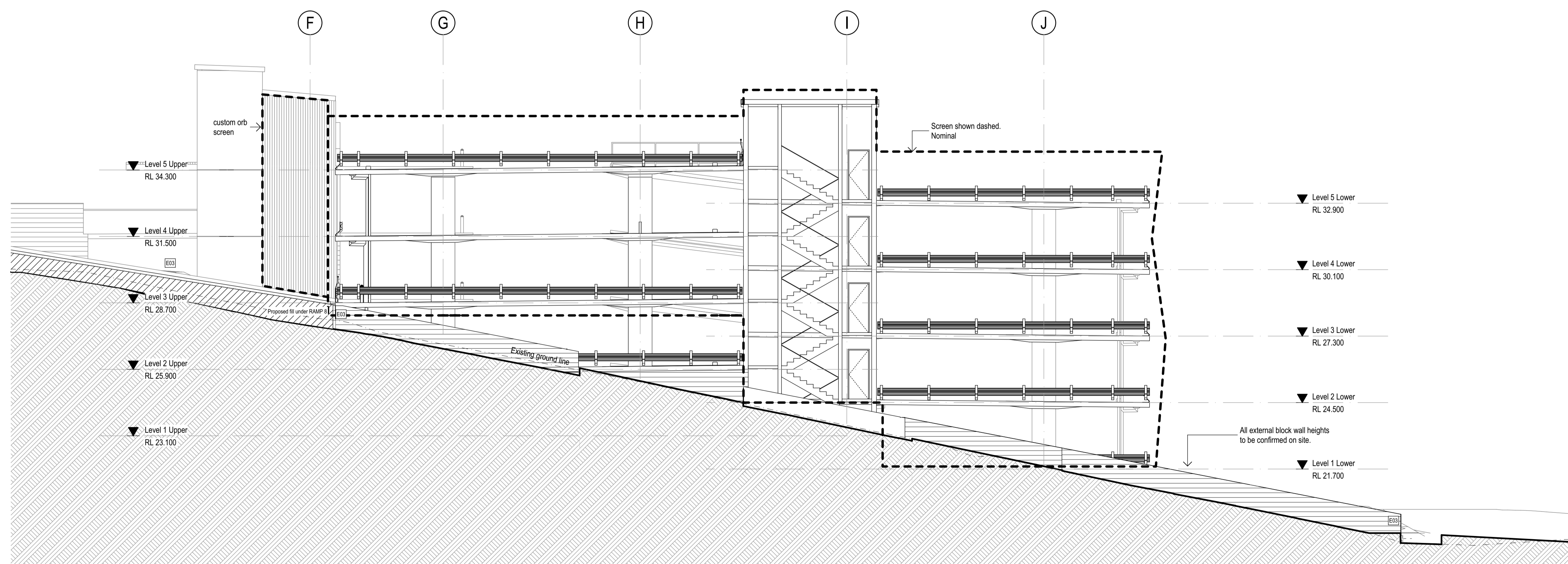
T1 30KN Rhino Stop Type 1, 30KN Crashrail
 T4 30KN Rhino Stop Type 4, 30KN Crashrail
 T1 240KN Rhino Stop Type 1, 240KN Crashrail
 2MH 30KN Rhino Stop 2M High Screen with integrated 30KN Crashrail
 2MH240KN Rhino Stop 2M High Screen with integrated 240KN Crashrail
 1.1MH30KN Rhino Stop 1.1M High Screen with integrated 30KN Crashrail

METALWORK & MISC LEGEND

MW01 Handrail 1000 high with two horizontal CHS rails see ACD4801
 MW04 Handrail 1000 high with one horizontal CHS rail see ACD4801
 MW05 Handrail - access ramp see ACD4801
 MW05 op2 Handrail - access ramp option 2 see ACD4801
 MW06 Handrail fixed to walls or steel columns
 MW07 Central handrail to stairs 1, 2 & 3
 MW08-900 Bollards 900 high
 MW08-1200 Bollards 1200 high
 COL Column
 DP Downpipe
 FHR Fire hose reel
 P1 Light Posts



1 ELEVATION
 South
 SCALE: 1:100



2 ELEVATION
 West
 SCALE: 1:100

REV	DESCRIPTION	DATE	Checked by
I	Updated Screen	15/04/16	OD
H	Lift Foyers Updated	08/04/16	OD
G	Revised Drawing Issue	22/01/16	OD
F	Revised Drawing Issue	23/12/15	OD
E	Revised Construction Issue	02/10/15	OD
D	Client Approval	26/08/15	JH
C	Final Client Approval	11/08/15	
B	General Revision Issue	31/07/15	JH
A	Construction Issue	22/07/15	JH

fulton trotter
 ARCHITECTS

BRISBANE 18 Fortman Lane
 PO Box 353
 Spring Hill, QLD 4004

BRISBANE
 SYDNEY

DIRECTORS
 Andrew Armstrong raia NSW 6321 QLD 2614
 Greg Isaac raia NSW 6855 QLD 2920
 Mark Trotter fraia VIC 17691 NSW 4421 QLD 1870
 Paul Trotter fraia NSW 7177 QLD 2646
 Robert Wesener raia NSW 5802 QLD 2633

www.fultontrotter.com.au

CONSTRUCTION DOCUMENTATION

WOOLLAM
 CONSTRUCTIONS

Lismore Base Hospital Carpark

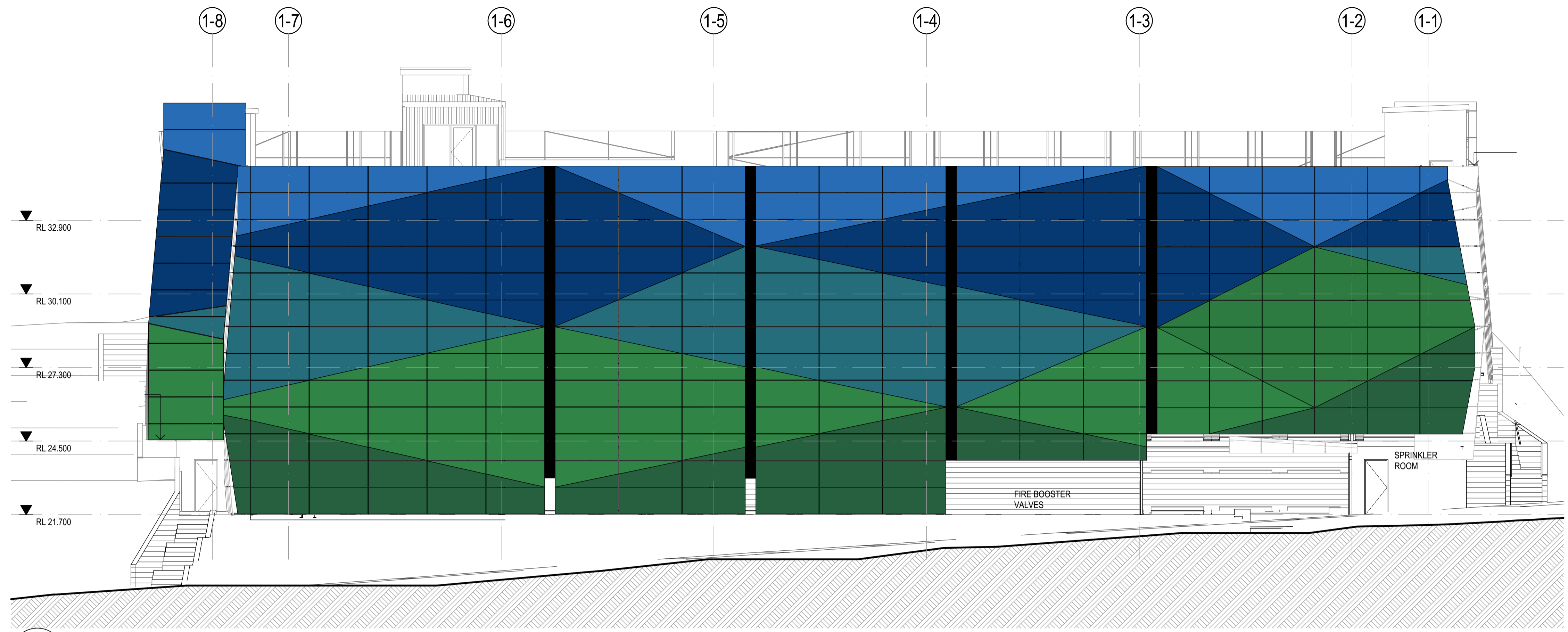
Uralba Street and Dalziell Street
 Lismore, QLD

ELEVATIONS 2

Figured dimensions take precedence over
 scale dimensions. Contractors must verify
 all dimensions on site before commencing
 any work or making shop drawings.

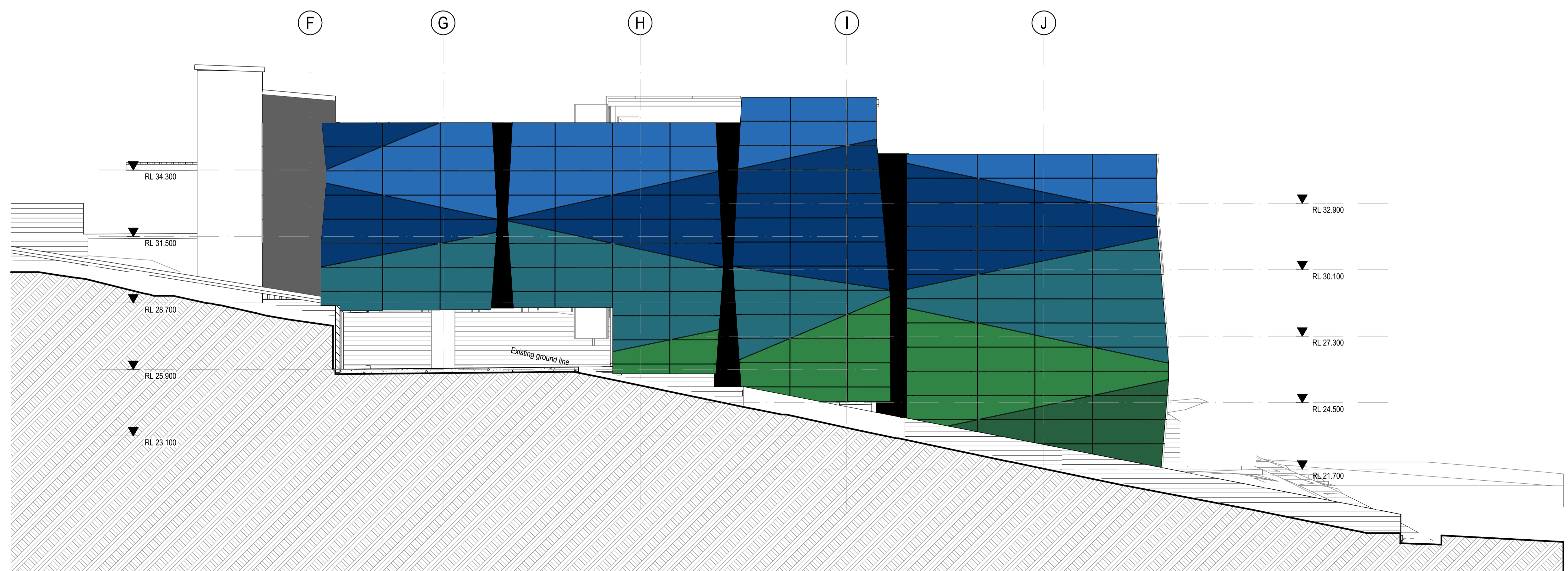
PROJECT NUMBER	DIRECTOR	CHECKED
3351L101	PT	
DRAWING NUMBER	REVISION	
ACD3002		I

Copyright
 This drawing shows design features and elements of a design prepared by Fulton Trotter Architects and is to be used only for work authorised in writing by the designers. It cannot be copied directly or indirectly, in whole or in part, nor shall it be used for any other building purposes. Unauthorised use will be considered an infringement of these rights.



NOTE: ALL COLOURED SCREENS ARE 3MM PERFORATED ALUMINIUM POWDERCOATED

1 ELEVATION
 Screen - South
 SCALE: 1:100



2 ELEVATION
 Screen - West
 SCALE: 1:100

REV.	DESCRIPTION	DATE	Checked by
H	Updated Screen	15/04/16	OD
G	Revised Screen Colours	10/02/16	JL
F	Revised Construction Issue 2	05/02/16	JL
E	Revised Construction Issue	02/02/16	OD
D	Revised Drawing Issue	22/01/16	OD
C	Revised Construction Issue	02/10/15	OD
B	Updated Facade	22/09/15	
A	Final Client Approval	11/08/15	

fulton trotter
 ARCHITECTS

BRISBANE
 18 Fortman Lane
 PO Box 353
 Spring Hill, QLD 4004

BRISBANE
 SYDNEY

DIRECTORS
 Andrew Armstrong raia NSW 6321 QLD 2614
 Greg Isaac raia NSW 6855 QLD 2920
 Mark Trotter fraia VIC 17691 NSW 4421 QLD 1870
 Paul Trotter fraia NSW 7177 QLD 2646
 Robert Wesener raia NSW 5802 QLD 2633

www.fultontrotter.com.au

CONSTRUCTION DOCUMENTATION

WOOLLAM CONSTRUCTIONS

Lismore Base Hospital Carpark

Uralba Street and Dalziell Street
 Lismore, QLD

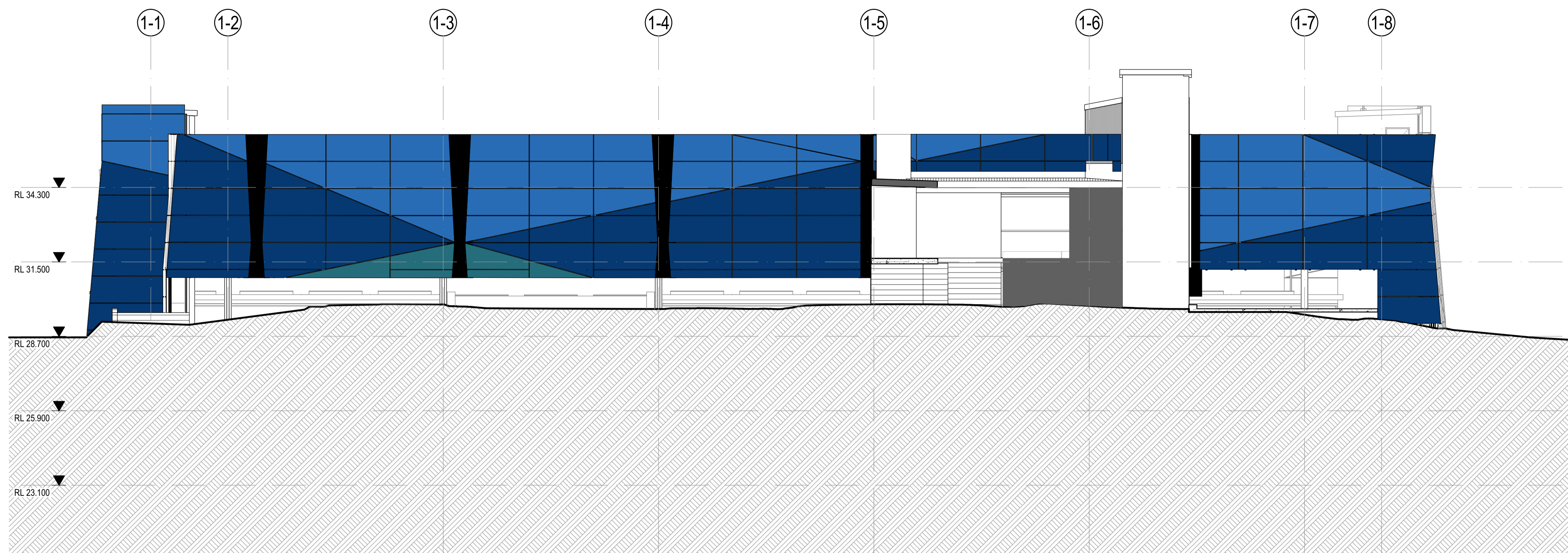
ELEVATIONS 2 WITH FACADE

Figured dimensions take precedence over scale dimensions. Contractors must verify all dimensions on site before commencing any work or making shop drawings.

PROJECT NUMBER: **3351LI01** DIRECTOR: **PT** CHECKED:

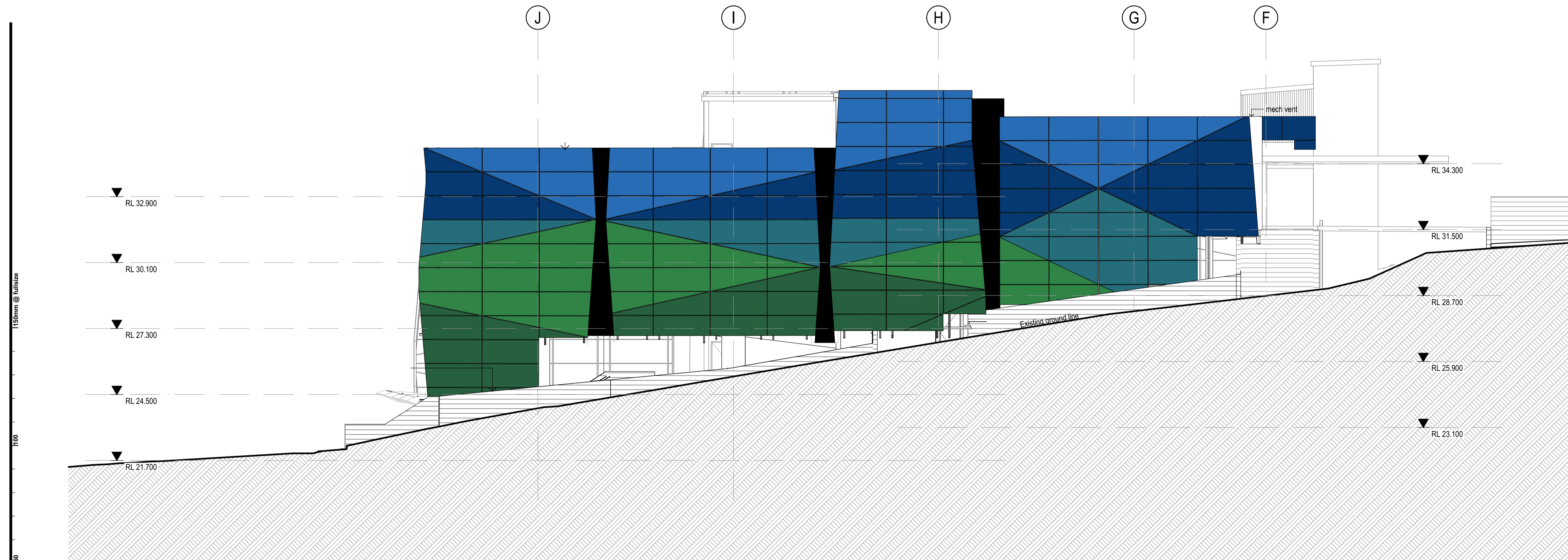
DRAWING NUMBER: **ACD3003** REVISION: **H**

Copyright
 This drawing shows design features and elements of a design prepared by
 Fulton Trotter Architects and is to be used only for work authorised in
 writing by the designers. It cannot be copied directly or indirectly, in whole
 or in part, nor shall it be used for any other building purposes. Unauthorised
 use will be considered an infringement of these rights.



1 ELEVATION
 Screen - North
 SCALE: 1:100

NOTE: ALL COLOURED SCREENS
 ARE 3MM PERFORATED
 ALUMINIUM
 POWDERCOATED



1 ELEVATION
 Screen - East
 SCALE: 1:100

REV	DESCRIPTION	DATE	Checked by
H	Updated Screen	15/04/16	OD
G	Revised Screen Colours	10/02/16	JL
F	Revised Construction Issue 2	05/02/16	JL
E	Revised Construction Issue	02/02/16	OD
D	Revised Drawing Issue	22/01/16	OD
C	Revised Construction Issue	02/10/15	OD
B	Updated Facade	22/09/15	
A	Final Client Approval	11/08/15	

fulton trotter
 ARCHITECTS

BRISBANE
 18 Portman Lane
 PO Box 353
 Spring Hill, QLD 4004

BRISBANE
 SYDNEY

t. (07) 3291 1511
 f. (07) 3291 1500
 e. brisbane@fultontrotter.com.au

DIRECTORS
 Andrew Armstrong raia NSW 6321 QLD 2614
 Greg Isaac raia NSW 6855 QLD 2920
 Mark Trotter fraia NSW 4421 QLD 1870
 Paul Trotter fraia NSW 7177 QLD 2646
 Robert Wesener raia NSW 5802 QLD 2633

www.fultontrotter.com.au

CONSTRUCTION DOCUMENTATION

WOOLLAM CONSTRUCTIONS

Lismore Base Hospital Carpark

Uralba Street and Dalziell Street
 Lismore, QLD

ELEVATIONS 2 WITH FACADE 2

Figured dimensions take precedence over
 scale dimensions. Contractors must verify
 all dimensions on site before commencing
 any work or making shop drawings.

PROJECT NUMBER 3351L101	DIRECTOR PT	CHECKED
DRAWING NUMBER ACD3004	REVISION	H