

LISMORE HOSPITAL CARPARK

This drawing is issued upon the condition it is not copied, reproduced, retained or disclosed to any unauthorised person without the written consent of fitzpatrick+partners. Drawings show design intent only. Shop drawings are to be provided for approval prior to construction or manufacture. Inconsistencies are to be reported to fitzpatrick+partners. Do not scale drawings. Check dimensions before commencing work.

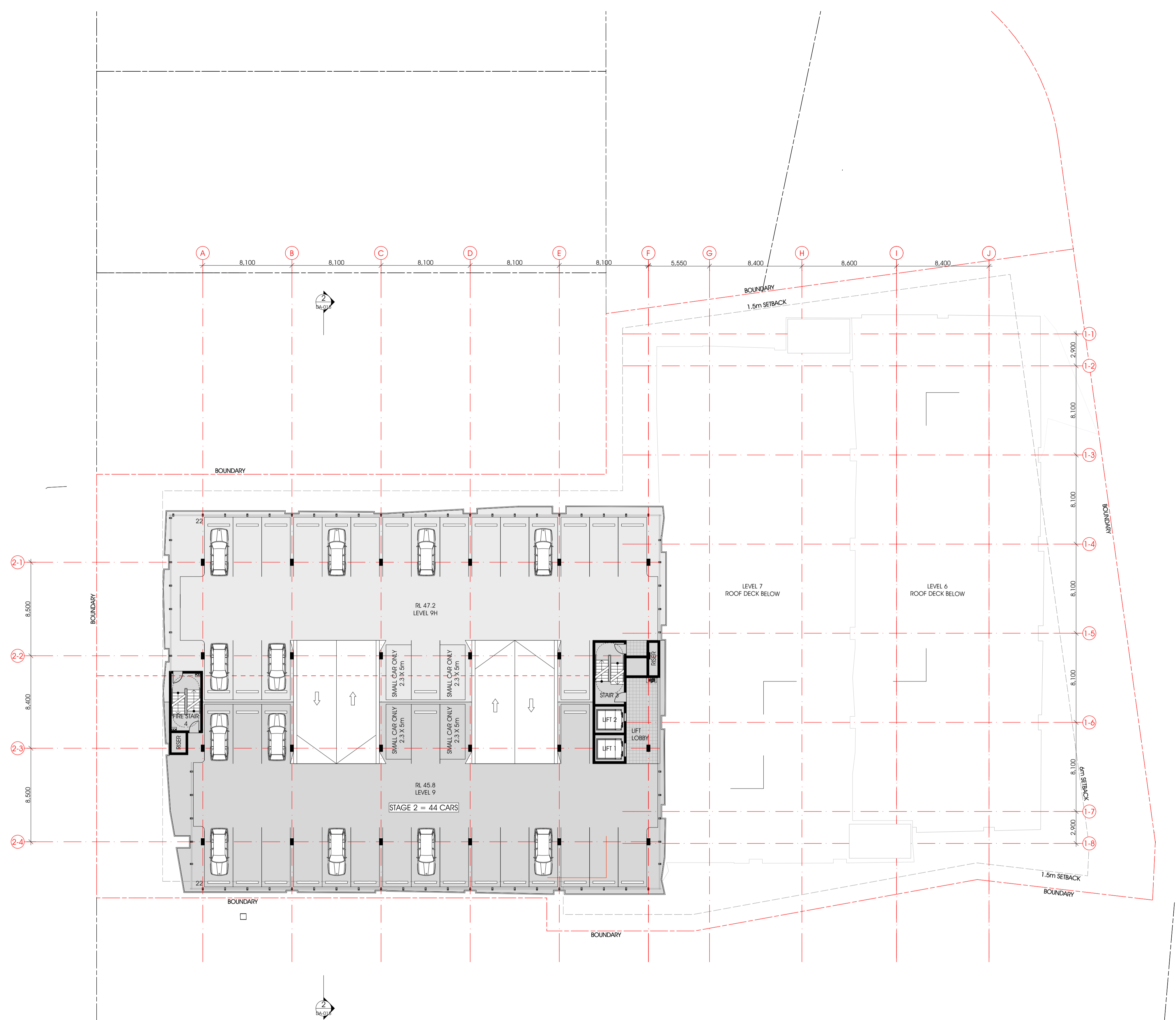


PROJECT NORTH SCALE 1:200 PRINT DATE 11/12/2014

fitzpatrick+partners © Copyright 2013 Pj = 61 2 8274 8200 Wj www.fitzpatrickpartners.com

DRAWING LEVEL 8

PROJECT NO. 21310 DRAWING NO. DA-012 ISSUE A



LISMORE HOSPITAL CARPARK

This drawing is issued upon the condition it is not copied, reproduced, retained or disclosed to any unauthorised person without the written consent of fitzpatrick+partners. Drawings show design intent only. Shop drawings are to be provided for approval prior to construction or manufacture. Inconsistencies are to be reported to fitzpatrick+partners. Do not scale drawings. Check dimensions before commencing work.

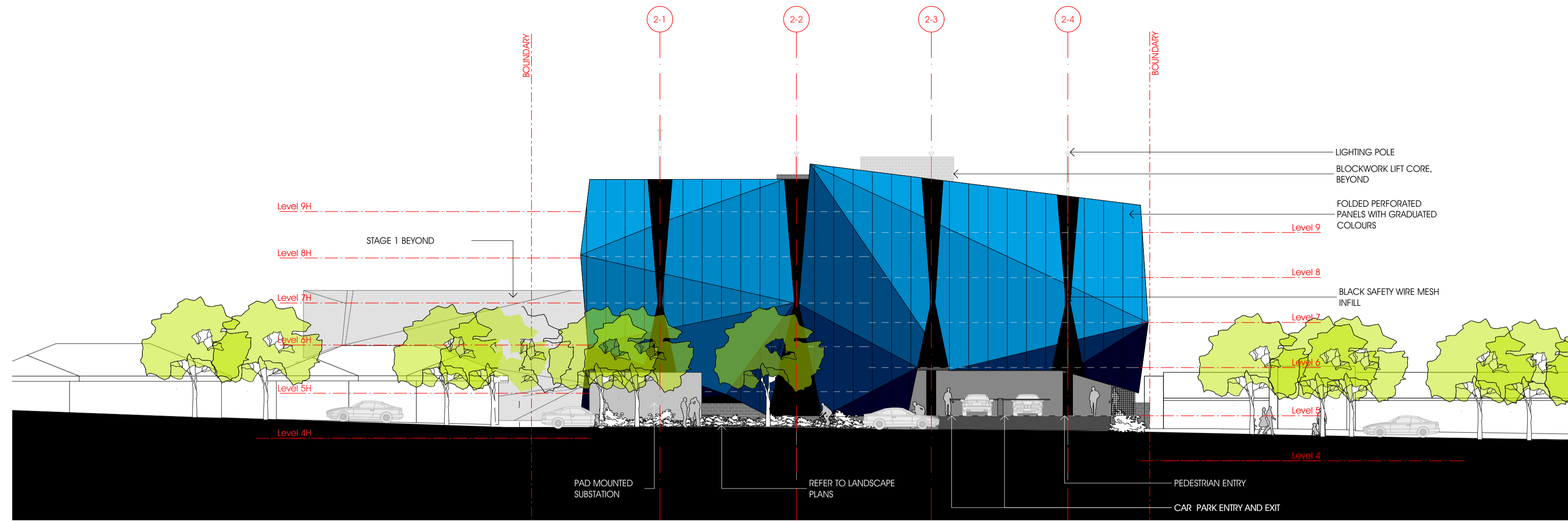


PROJECT NORTH  
SCALE 1:200  
PRINT DATE 11/12/2014

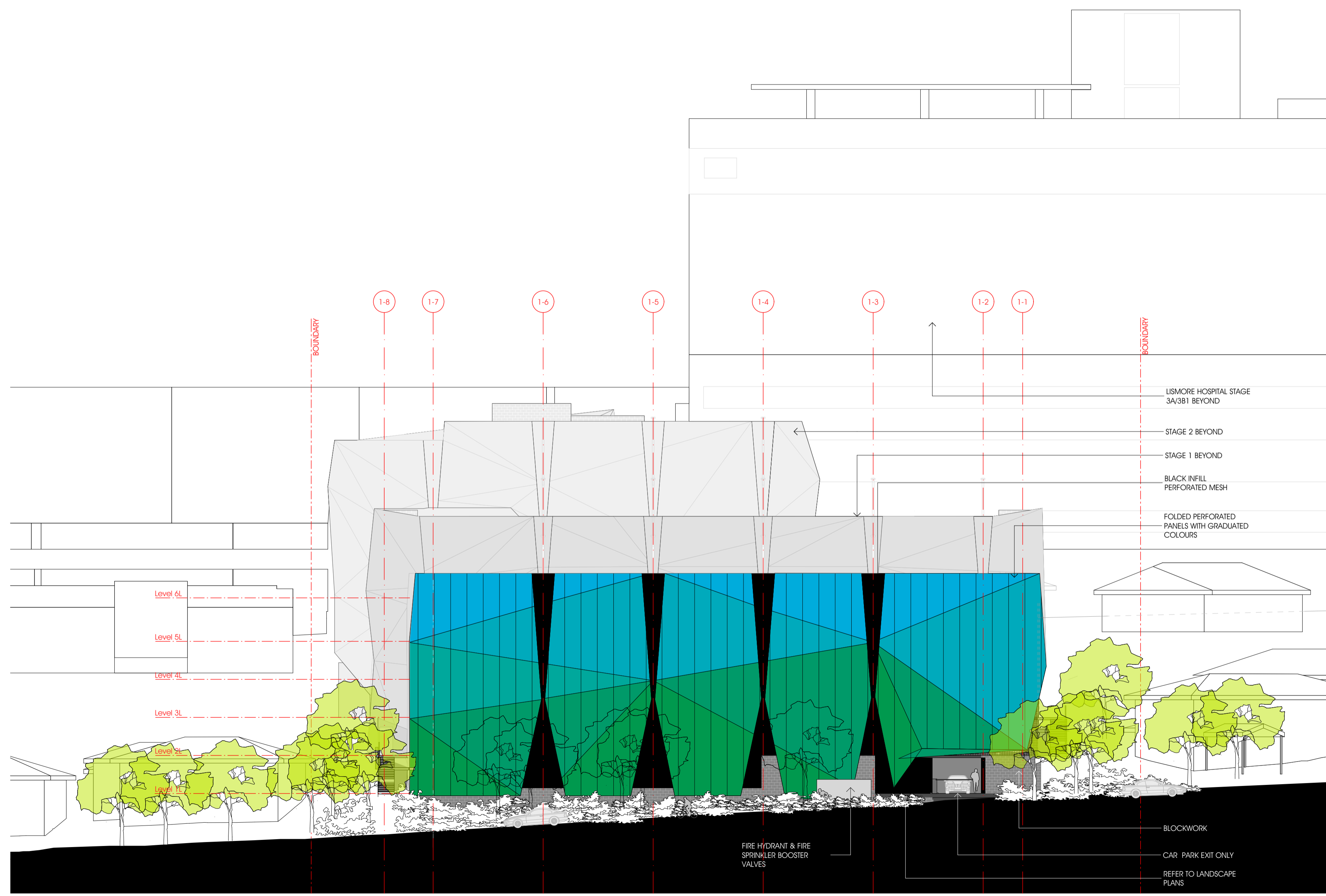
fitzpatrick+partners  
© Copyright 2013  
P1 = 61 2 8274 8000 WJ www.fitzpatrickpartners.com

DRAWING LEVEL 9

PROJECT NO. 21310  
DRAWING NO. DA-013  
ISSUE A



1 NORTHERN ELEVATION (URALBA STREET)  
1:200



2 SOUTHERN ELEVATION (DALZIELL STREET)  
1:200

LISMORE HOSPITAL CARPARK

This drawing is issued upon the condition it is not copied, reproduced, retained or disclosed to any unauthorised person either wholly or in part without prior consent in writing of fitzpatrick+partners.  
Drawings show design intent only. Shop drawings are to be provided for approval prior to construction or manufacture. Inconsistencies are to be reported to fitzpatrick+partners.  
Do not scale drawings. Check dimensions before commencing work.

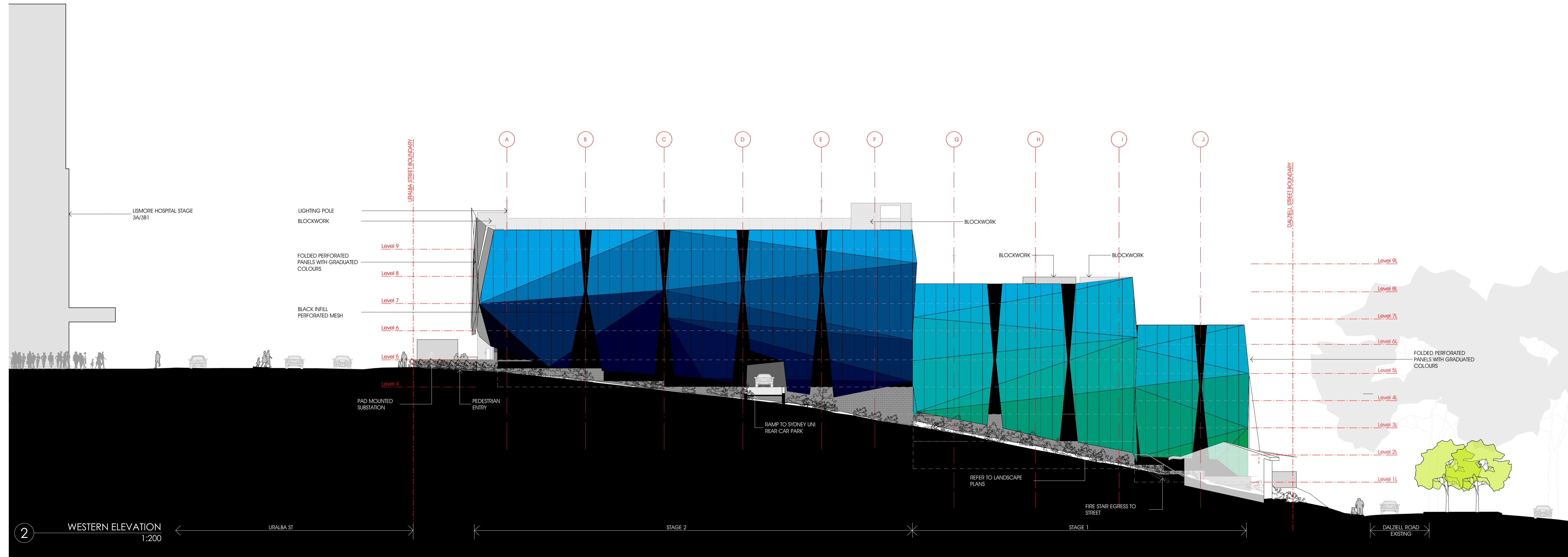
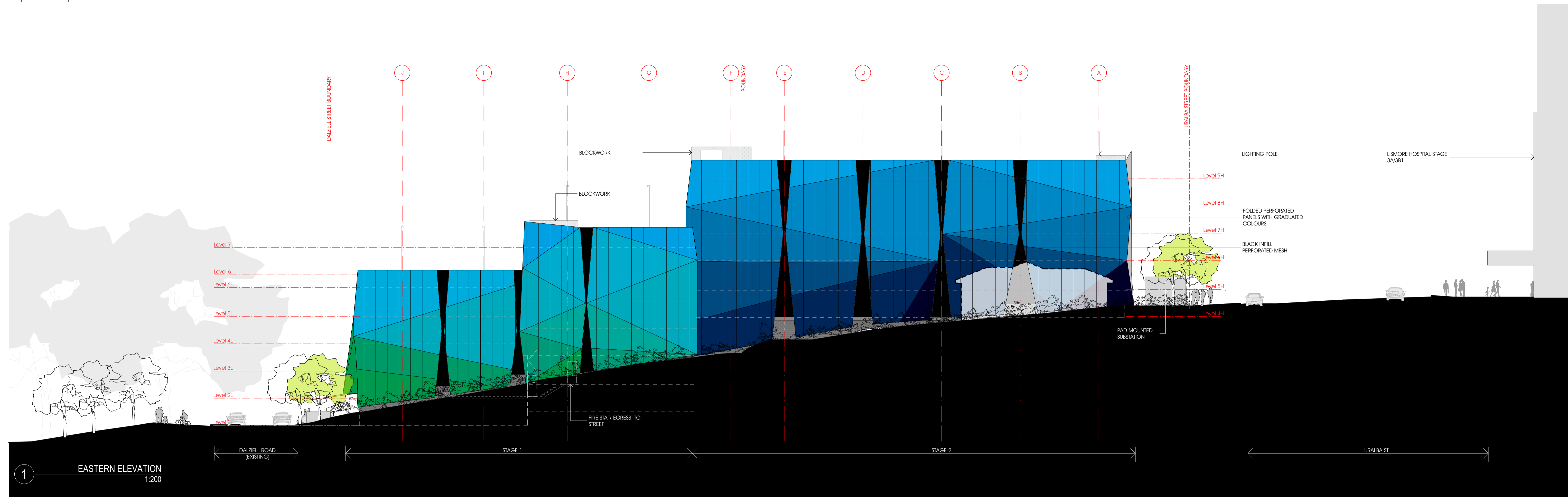


PROJECT NORTH  
SCALE 1:200  
PRINT DATE 11/12/2014

fitzpatrick+partners  
© Copyright 2013  
Pj + 61 2 9274 8200 Wj www.fitzpatrickpartners.com

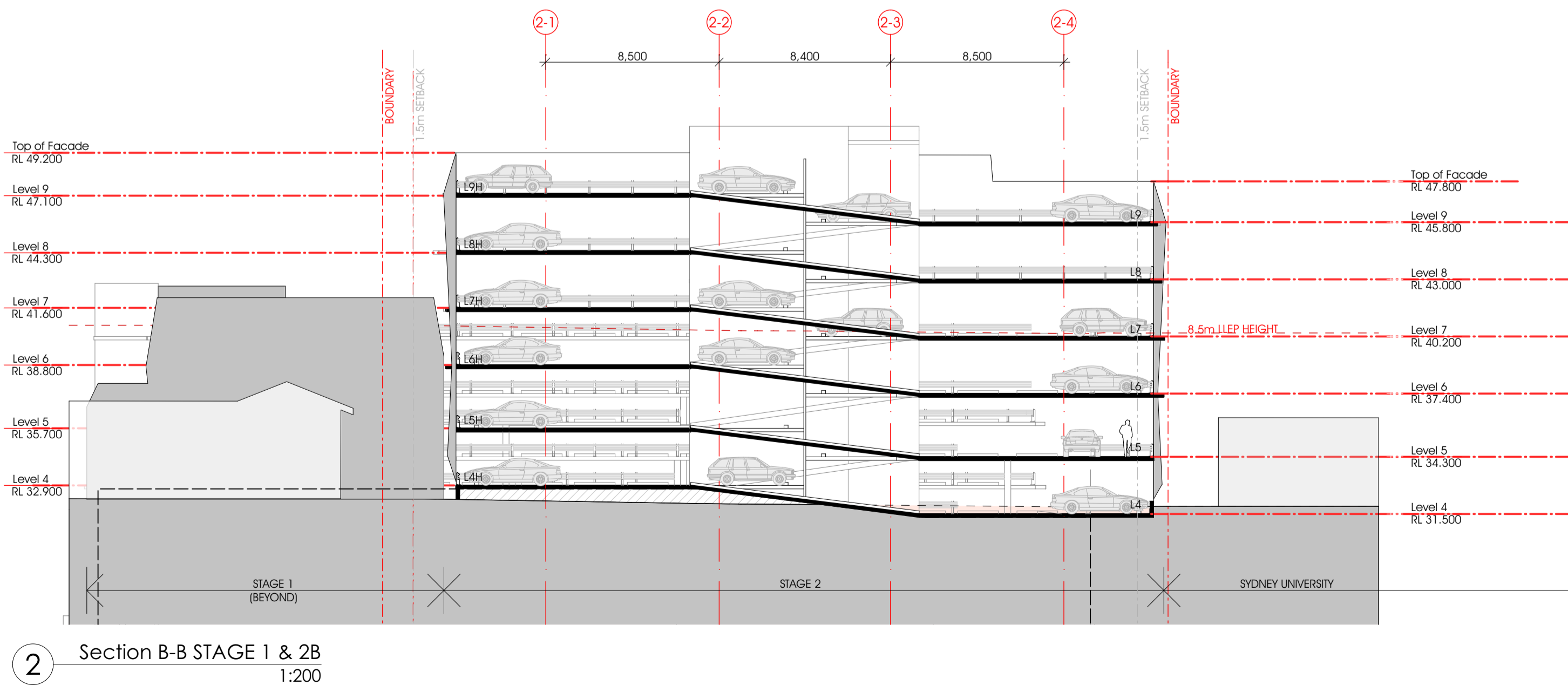
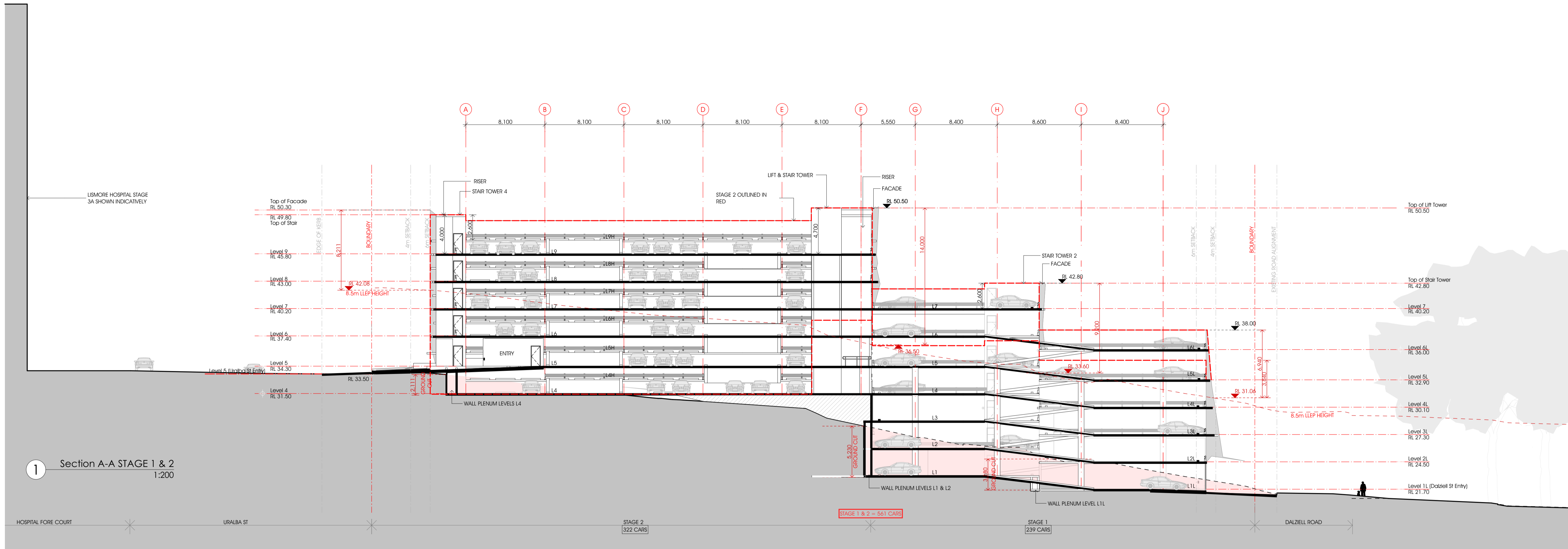
DRAWING ELEVATIONS 1

PROJECT NO. 21310  
DRAWING NO. DA-014  
ISSUE A



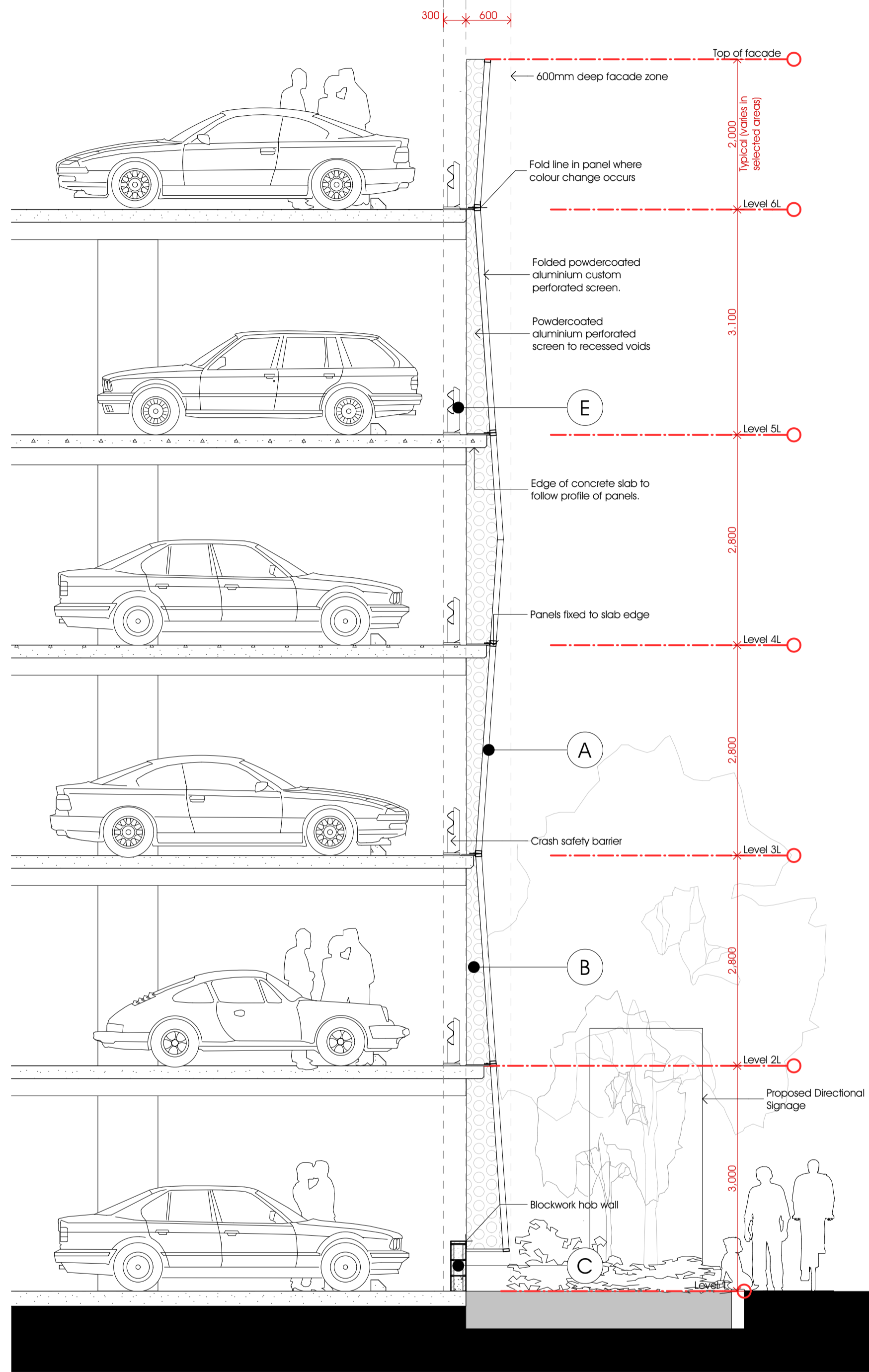
LISMORE HOSPITAL CARPARK

This drawing is issued upon the condition it is not copied, reproduced, retained or disclosed to any unauthorised person without the written consent of fitzpatrick+partners. Drawings show design intent only. Shop drawings are to be provided for approval prior to construction or manufacture. Inconsistencies are to be reported to fitzpatrick+partners. Do not scale drawings. Check dimensions before commencing work.

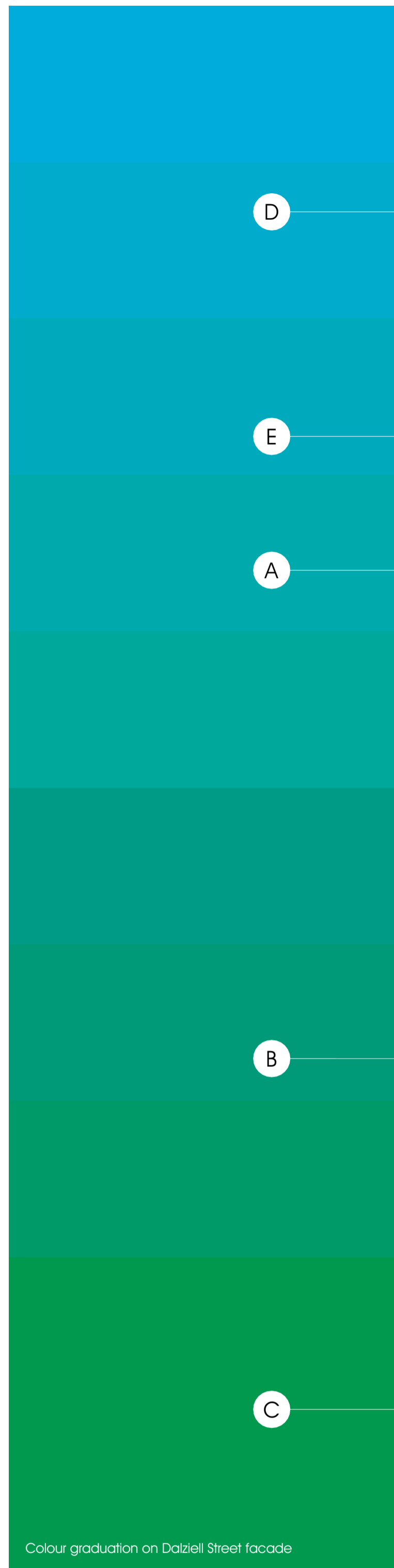


LISMORE HOSPITAL CARPARK

This drawing is issued upon the condition it is not copied, reproduced, retained or disclosed to any unauthorised person either wholly or in part without prior consent in writing of fitzpatrick + partners.  
Drawings show design intent only. Shop drawings are to be provided for approval prior to construction or manufacture. Inconsistencies are to be reported to fitzpatrick + partners.  
Do not scale drawings. Check dimensions before commencing work.



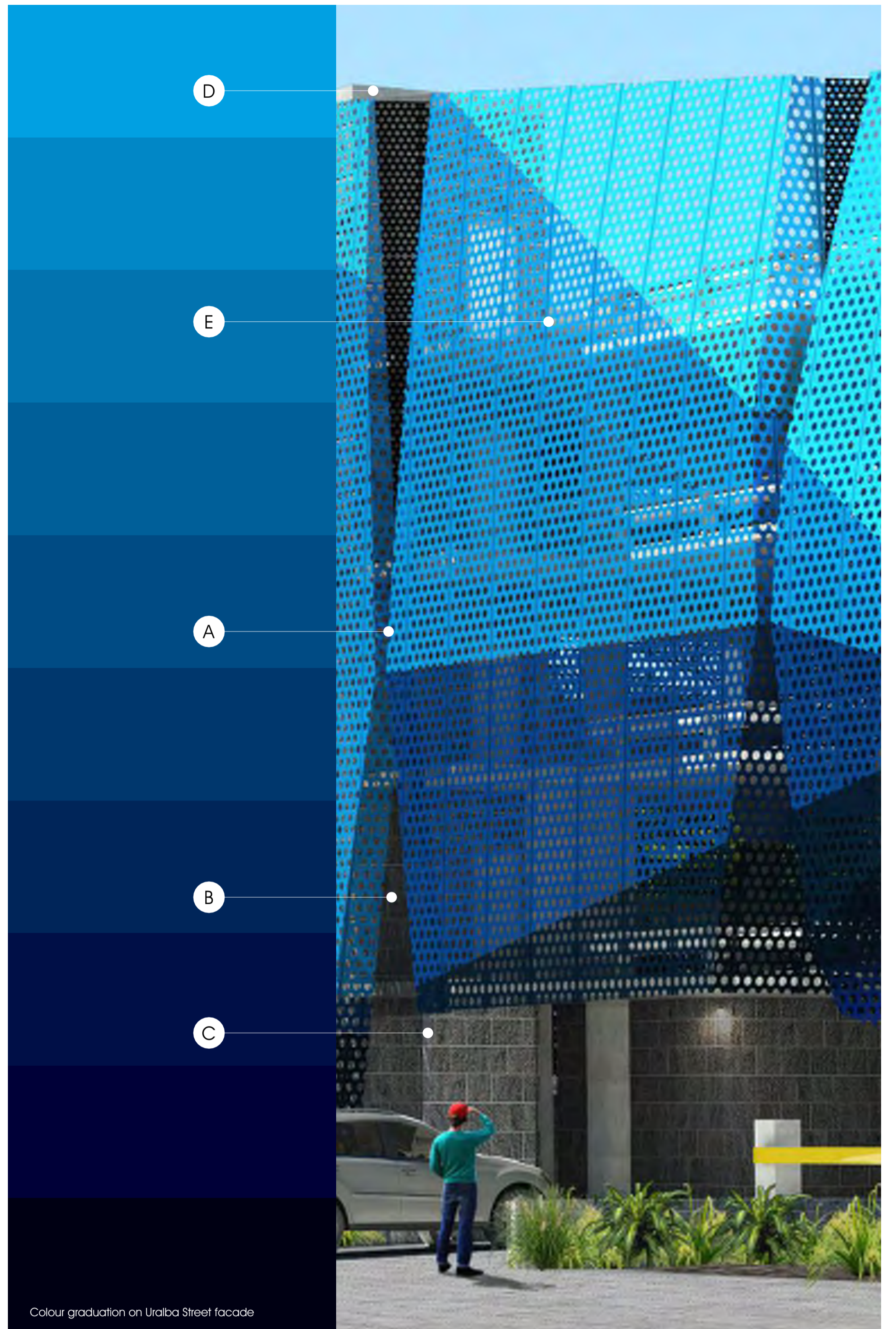
1 DETAIL SECTION  
1:50



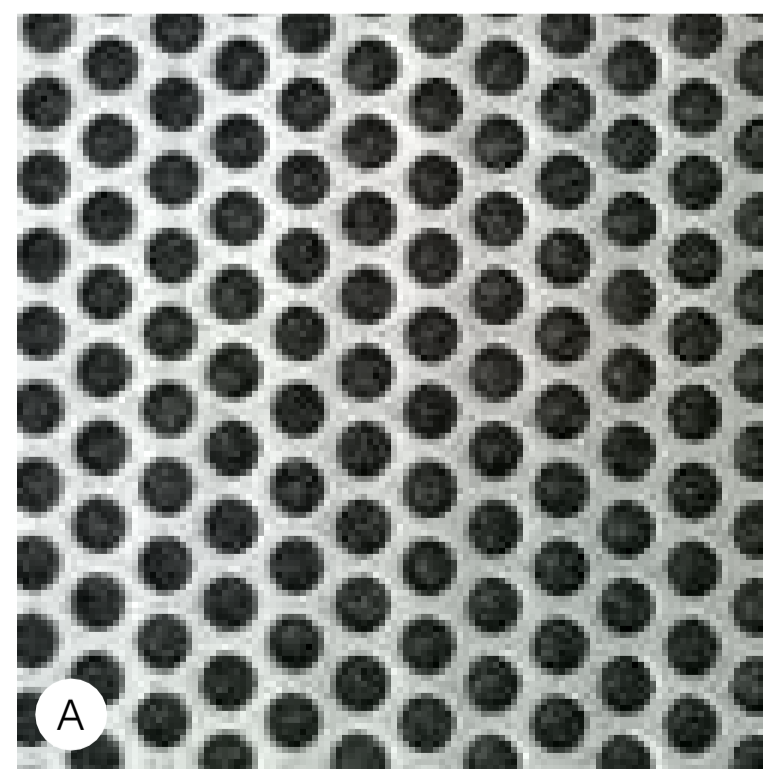
Colour graduation on Dalzell Street facade



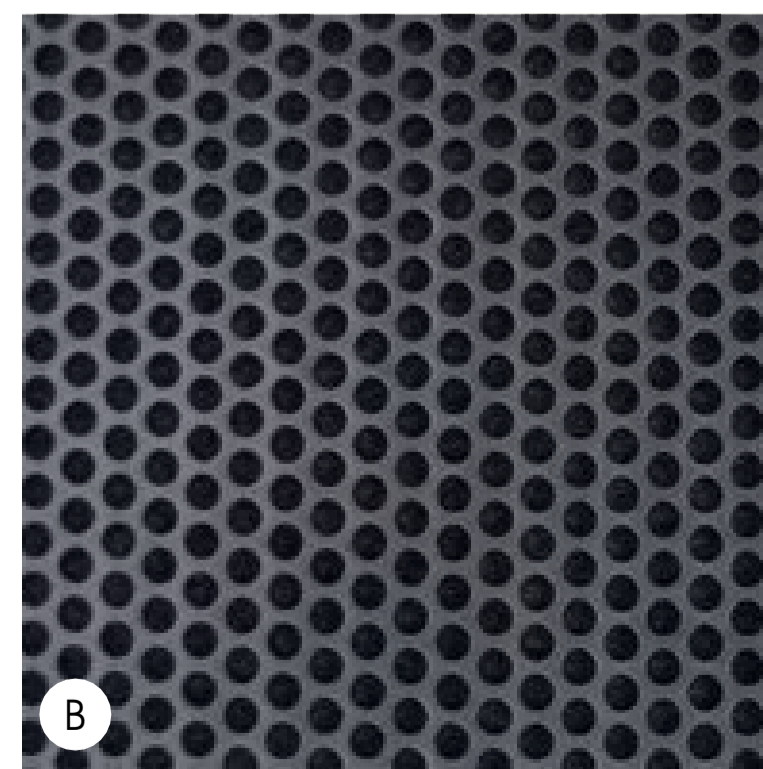
Colour graduation on Urbla Street facade



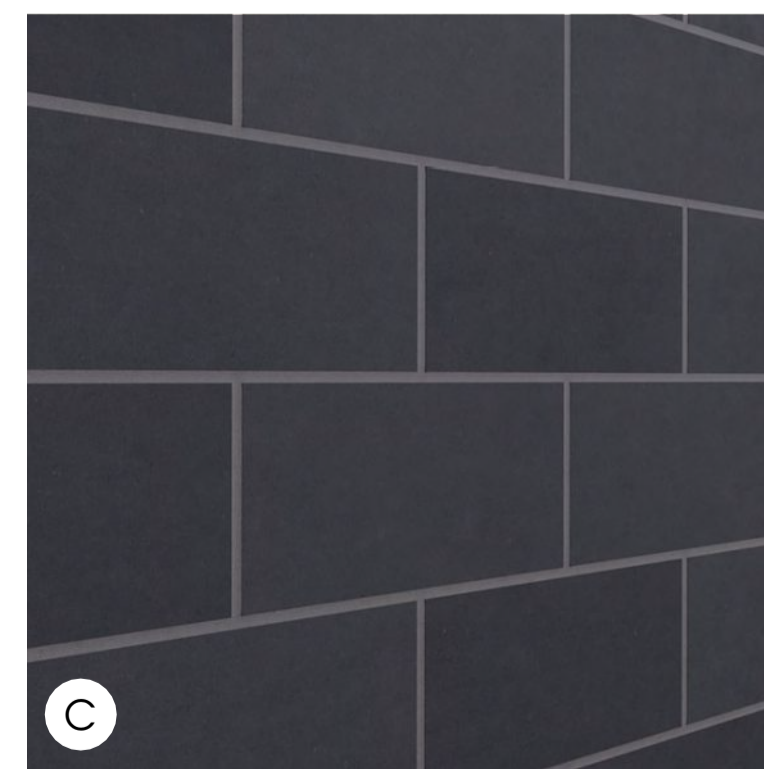
NOTE: ALL FINISHES ARE INDICATIVE ONLY AND SUBJECT TO FINALISATION.



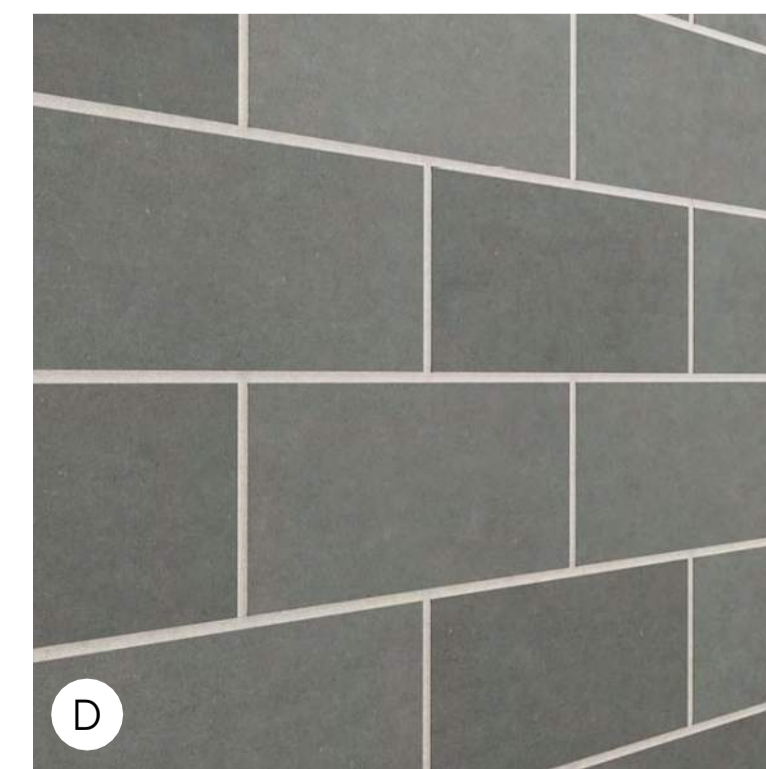
Folded powdercoated perforated metal panels to facade



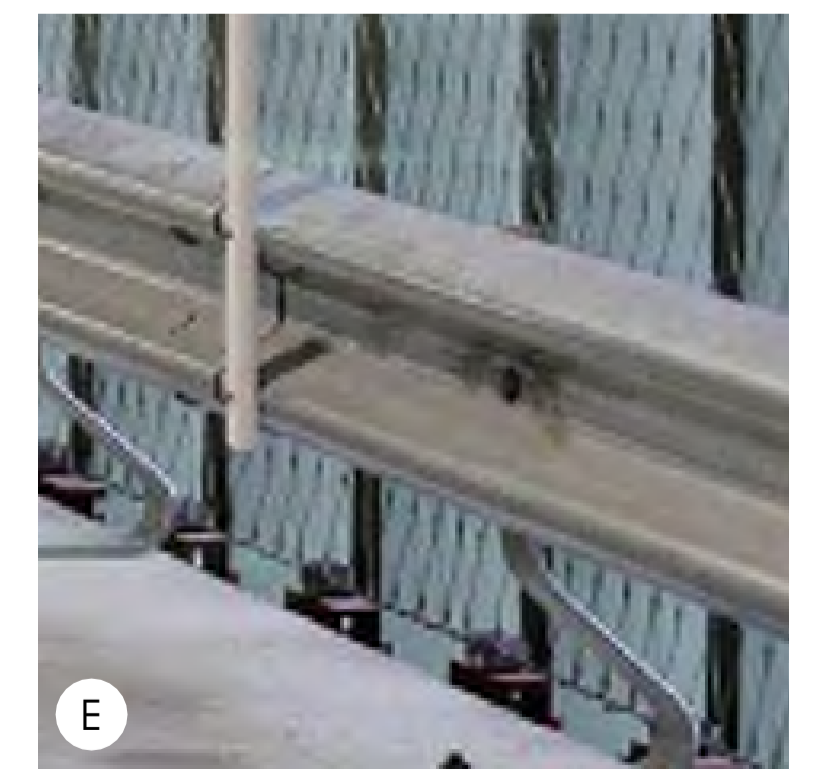
Black perforated metal recessed voids



Charcoal blockwork walls



Charcoal honed blockwork walls



Proprietary crash barriers

LISMORE HOSPITAL CARPARK

This drawing is issued upon the condition it is not copied, reproduced, altered or disclosed to any unauthorised person without the written consent of fitzpatrick+partners. Drawings show design intent only. Shop drawings are to be provided for approval prior to construction or manufacture. Inconsistencies are to be reported to fitzpatrick+partners. Do not scale drawings. Check dimensions before commencing work.



SCALE  
1:50  
1:50/87  
1:25

PRINT DATE  
11/12/2014

fitzpatrick+partners  
© Copyright 2013  
Pj + 61 2 9274 8200 Wj www.fitzpatrickpartners.com

PROJECT NO. 21310  
DRAWING NO. DA-017  
ISSUE A

CLIENT: NSW Health Infrastructure  
PROJECT: LISMORE HOSPITAL CARPARK  
DRAWING: FACADE DETAIL + MATERIALS AND FINISHES



LISMORE HOSPITAL CARPARK

This drawing is issued upon the condition it is not copied, reproduced, altered or disclosed to any unauthorised person without the written consent of fitzpatrick+partners. Drawings show design intent only. Shop drawings are to be provided for approval prior to construction or manufacture. Inconsistencies are to be reported to fitzpatrick+partners. Do not scale drawings. Check dimensions before commencing work.



PROJECT NORTH  
SCALE 1:0.99  
PRINT DATE 11/12/2014

fitzpatrick+partners  
© Copyright 2013  
Pj + 61 2 9274 8200 Wj www.fitzpatrickpartners.com

PHOTOMONTAGE - URALBA STREET (STAGE 1 & 2)

PROJECT NO. 21310  
DRAWING NO. DA-018  
ISSUE A



LISMORE HOSPITAL CARPARK

This drawing is issued upon the condition it is not copied, reproduced, retained or disclosed to any unauthorised person without the written consent of fitzpatrick + partners.  
 Drawings show design intent only. Shop drawings are to be provided for approval prior to construction or manufacture.  
 Inconsistencies are to be reported to fitzpatrick + partners.  
 Do not scale drawings. Check dimensions before commencing work.



PROJECT NORTH

SCALE 1:0.79

PRINT DATE 11/12/2014

fitzpatrick + partners  
 © Copyright 2013  
 Pj + 61 2 9274 8200 Wj www.fitzpatrickpartners.com

PHOTOMONTAGE - DALZIELL STREET (STAGE 1 & 2)

PROJECT NO. 21310

DRAWING NO. DA-019

ISSUE A





① 30 June 9am



② 30 June 12am



③ 30 June 3am

LISMORE HOSPITAL CARPARK

This drawing is issued upon the condition it is not copied, reproduced, retained or disclosed to any unauthorised person either wholly or in part without prior consent in writing of fitzpatrick+partners. Drawings show design intent only. Shop drawings are to be provided for approval prior to construction or manufacture. Inconsistencies are to be reported to fitzpatrick+partners. Do not scale drawings. Check dimensions before commencing work.



PROJECT NORTH  
SCALE  
1:100

PRINT DATE  
11/12/2014

fitzpatrick+partners  
© Copyright 2013  
Pj + 61 2 9274 8200 Wj www.fitzpatrickpartners.com

DRAWING  
SHADOW DIAGRAMS

PROJECT NO.  
21310

DRAWING NO.  
DA-021

ISSUE  
A



33 Bligh Street, Sydney



Bishops See South, Perth



Royal Randwick Racecourse, Sydney



The Star, Sydney



Macquarie, Sydney

Architecture is the fine balance between innovative design solutions and the practical importance of fitting buildings to people, the environment and budgets.

Since its foundation, fitzpatrick+partners has created inspiring architectural response to unique problems throughout Australasia.

Their work originates from a particular stream of architecture that is independent of the self-conscious style based-approach and is more about technical problem solving, This approach is much closer to engineering than the high aesthetic ground, but is not unaware or unconcerned about the aesthetic outcome. Instead, it sees this as more a result of good thinking than as a goal in and of itself.

Their creative and inventive solutions relate to the immediate environment and the context of the project, resulting in buildings that are a pleasure in which to live and work.

The studio does not limit itself to a particular scale or typography or project, preferring to work across all scales and building uses, where they believe they can add value to the design and construction process.

fitzpatrick+partners

level 6  
156 clarence street  
sydney, nsw 2000

+61 (0)2 8284 8200

enquires@fitzpatrickpartners.com  
fitzpatrickpartners.com