

# LISMORE BASE HOSPITAL STAGE 3B DA



DA SHEET LIST	
Sheet Number	Sheet Name
DA0000	COVER SHEET
DA1000	SITE PLAN
DA1100	DEMOLITION PLAN
DA2203	FLOOR PLAN L3
DA2204	FLOOR PLAN L4
DA2205	FLOOR PLAN L5
DA2206	FLOOR PLAN L6
DA2207	FLOOR PLAN L7
DA2208	FLOOR PLAN L8
DA2209	FLOOR PLAN L9
DA2210	FLOOR PLAN L10
DA2211	FLOOR PLAN L11
DA2212	FLOOR PLAN L12
DA2213	ROOF PLAN
DA2214	FLOOR PLAN HELIPAD & ROOF
DA3001	SOUTH ELEVATION
DA3002	NORTH ELEVATION
DA3003	EAST & WEST ELEVATION
DA3100	SECTION 1
DA3101	SECTION 2
DA3102	SECTION 3
DA8001	SUN SHADOW DIAGRAMS 3B
DA8002	3D PERSPECTIVE
DA8100	MATERIALS
DA9001	STAGE 3B SUMMARY AREAS

Copyright  
WOODS BAGOT  
Notes:  
CONTRACTOR MUST VERIFY ALL DIMENSIONS  
ON SITE BEFORE COMMENCING WORK OR  
PREPARING WORKSHOP DRAWINGS. DO NOT  
SCALE DRAWING.



Client  
**NSW** Health  
GOVERNMENT Infrastructure  
Project  
**LISMORE BASE HOSPITAL  
REDEVELOPMENT**  
60 Urumba Street Lismore NSW 2480

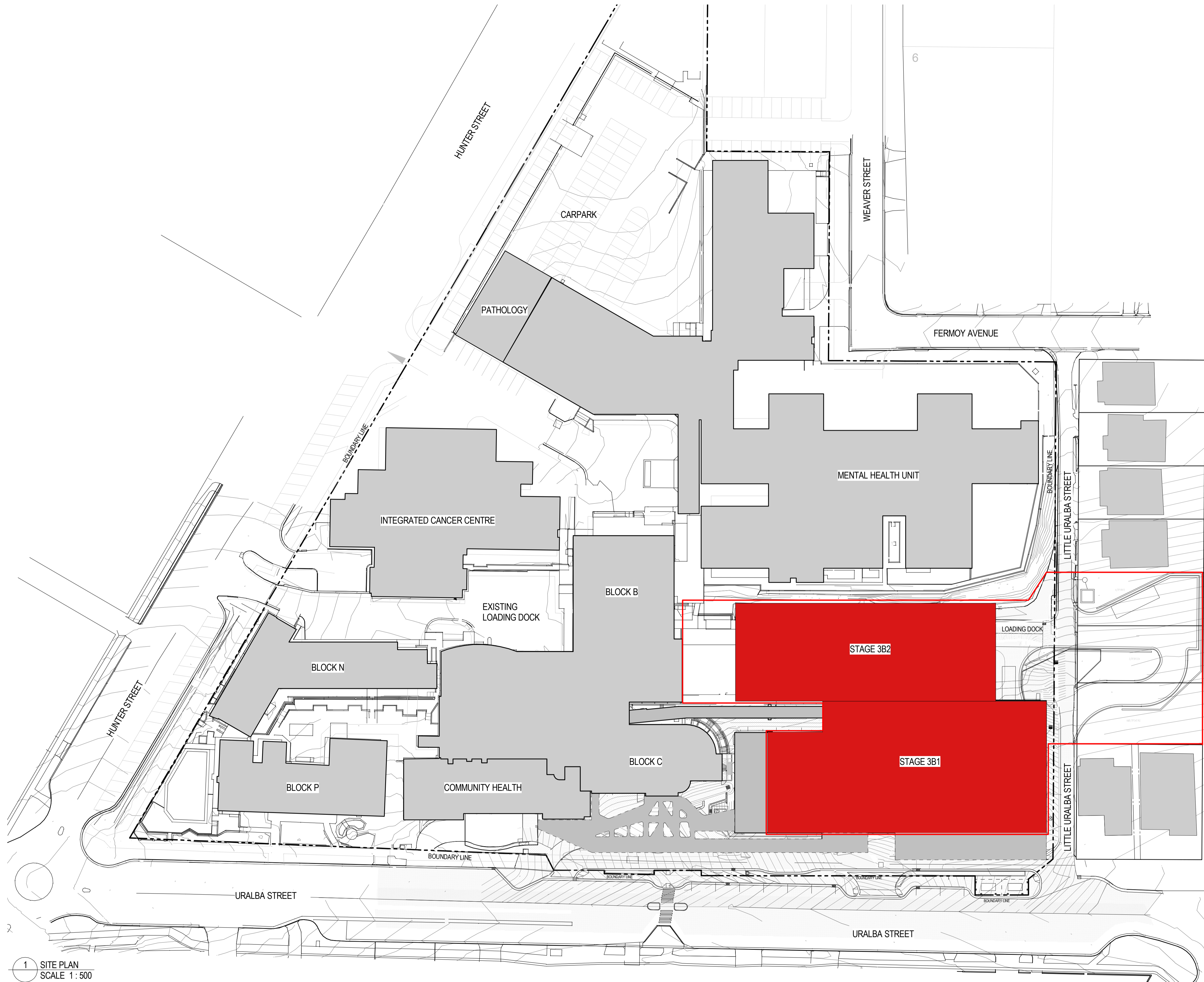
Drawing title  
**COVER SHEET**

Checked  
AJ  
Approved  
CH  
Scale  
@ A1 sheet size  
50mm on original



Project number  
**120179**  
Drawing number  
**DA0000**  
Revision  
**C**  
Status  
**FOR APPROVAL**

Rev	Description	Date	App'd
C	ISSUE FOR INFORMATION	13/11/14	AJ
B	ISSUE FOR INFORMATION	7/11/14	AJ
A	ISSUE FOR INFORMATION	03/10/14	AJ



1 SITE PLAN  
SCALE 1 : 500

**LEGEND**

- BOUNDARY LINE
- EXISTING BUILDINGS/BUILT FORM
- EXTENT OF SITE WORKS
- 3B BUILDINGS/BUILT FORM

Copyright  
WOODS BAGOT  
Notes:  
CONTRACTOR MUST VERIFY ALL DIMENSIONS  
ON SITE BEFORE COMMENCING WORK OR  
PREPARING WORKSHOP DRAWINGS. DO NOT  
SCALE DRAWING.

D	ISSUE FOR INFORMATION	13/11/14	AJ
C	ISSUE FOR INFORMATION	07/11/14	AJ
B	ISSUE FOR INFORMATION	03/10/14	AJ
A	ISSUE FOR INFORMATION	18/09/14	AJ

		13/11/14	AJ
		07/11/14	AJ
		03/10/14	AJ
		18/09/14	AJ

Client  
**NSW** Health  
GOVERNMENT Infrastructure

Project  
**LISMORE BASE HOSPITAL  
REDEVELOPMENT**  
60 Uralba Street Lismore NSW 2480

Drawing title  
**SITE PLAN**

Checked	Approved	Scale
AJ	CH	As indicated
		© A1 sheet size
		50mm on original

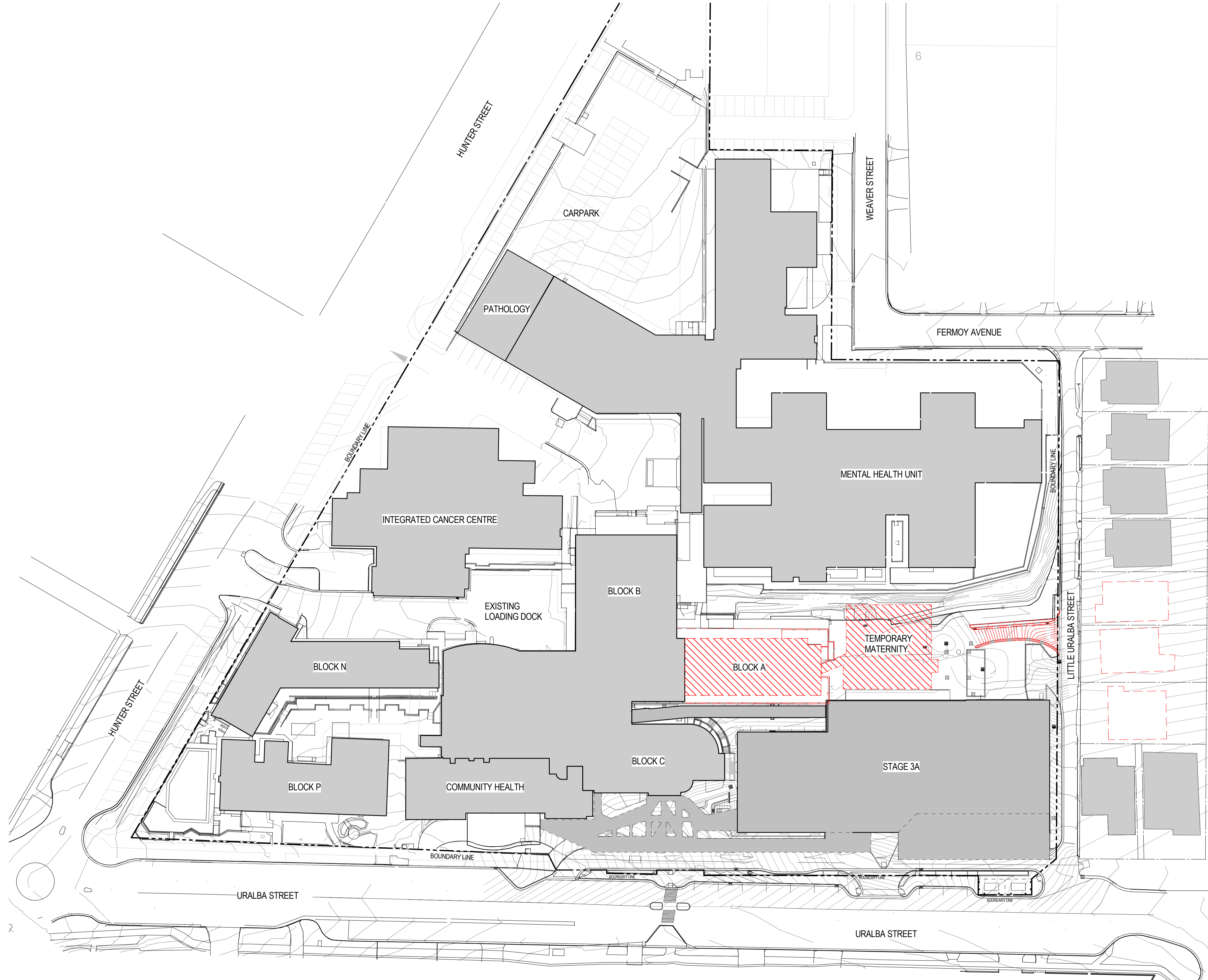
**WOODS BAGOT** AUSTRALIA  
ASIA  
MIDDLE EAST  
EUROPE  
NORTH AMERICA

Project number  
**120179**

Drawing number  
**DA1000**

Status  
**FOR APPROVAL**

Revision  
**D**



Copyright  
WOODS BAGOT  
Notes:  
CONTRACTOR MUST VERIFY ALL DIMENSIONS  
ON SITE BEFORE COMMENCING WORK OR  
PREPARING WORKSHOP DRAWINGS. DO NOT  
SCALE DRAWING.

**LEGEND**

--- BOUNDARY LINE

EXISTING BUILDINGS/BUILT FORM TO BE DEMOLISHED/ RELOCATED

EXISTING BUILDINGS/BUILT FORM

EXISTING BUILDINGS/BUILT FORM DEMOLISHED AS PART OF SEPERATE APPROVAL

Rev	Description	Date	App'd	Rev	Description	Date	App'd
B	ISSUE FOR INFORMATION	13/11/14	AJ	B	ISSUE FOR INFORMATION	13/11/14	AJ
A	ISSUE FOR INFORMATION	7/11/14	AJ	A	ISSUE FOR INFORMATION	7/11/14	AJ



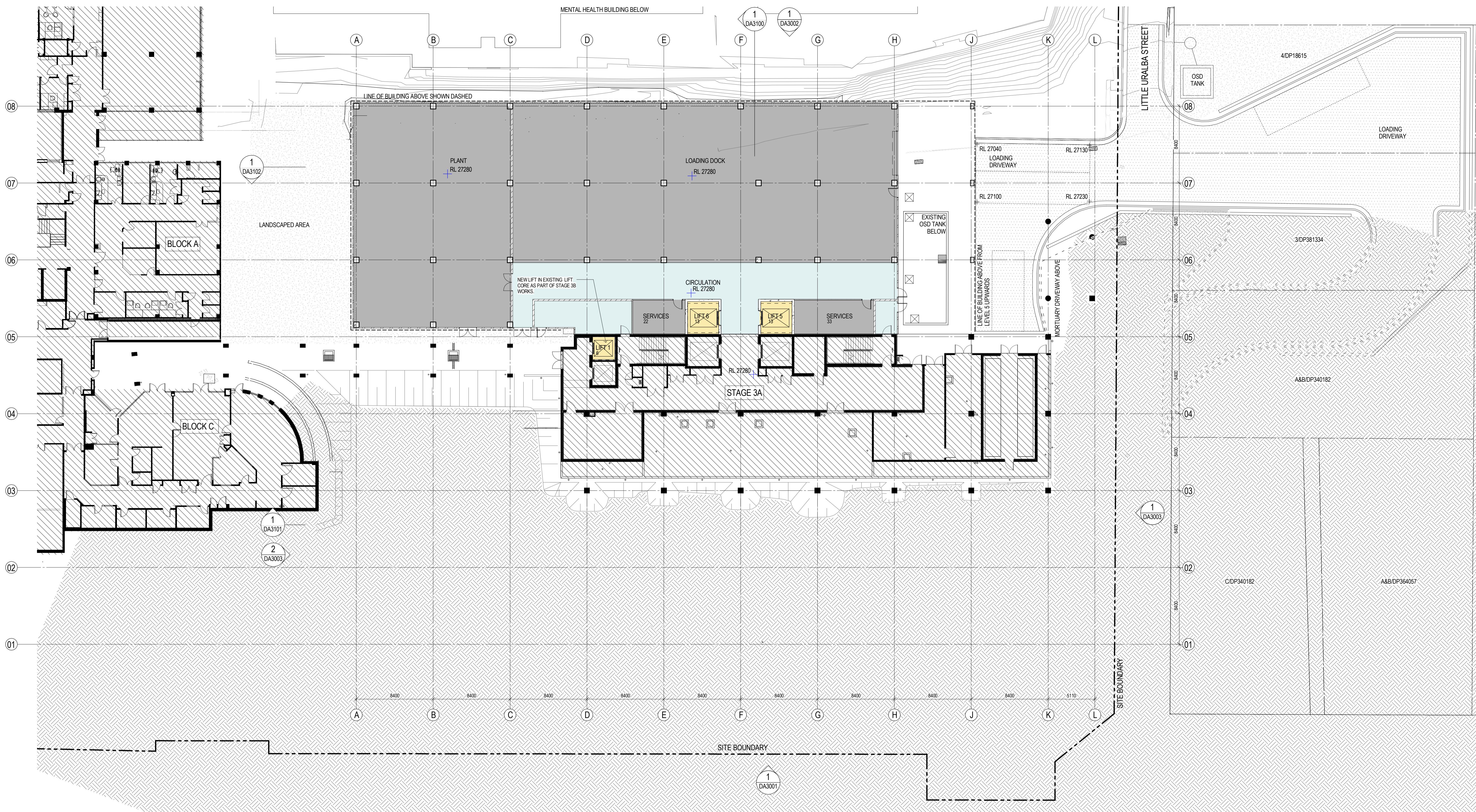
Client  
**LISMORE BASE HOSPITAL REDEVELOPMENT**  
60 Uralba Street Lismore NSW 2480

**DEMOLITION PLAN**

Checked: AJ  
Approved: CH  
Scale: As indicated  
© A1 sheet size  
50mm on original



Project number: 120179  
Drawing number: DA1100  
Revision: B  
Status: FOR APPROVAL



1 FLOOR PLAN L3  
SCALE 1:200

Copyright  
WOODS BAGOT  
Notes:  
CONTRACTOR MUST VERIFY ALL DIMENSIONS  
ON SITE BEFORE COMMENCING WORK OR  
PREPARING WORKSHOP DRAWINGS. DO NOT  
SCALE DRAWING.

**LEGEND**

- EXISTING WALL TO BE RETAINED
- NEW WALL
- EXISTING WORKS NOT IN SCOPE

**Department Legend**

- Main Circulation
- Services
- Vertical Circulation

E	ISSUE FOR INFORMATION	13/11/14	AJ
D	ISSUE FOR INFORMATION	7/11/14	AJ
C	ISSUE FOR INFORMATION	31/10/14	AJ
B	ISSUE FOR INFORMATION	03/10/14	AJ
A	ISSUE FOR INFORMATION	18/09/14	AJ

13/11/14	AJ
7/11/14	AJ
31/10/14	AJ
03/10/14	AJ
18/09/14	AJ

Client  
**NSW Health Infrastructure**  
GOVERNMENT

Project  
**LISMORE BASE HOSPITAL REDEVELOPMENT**  
60 Uralba Street Lismore NSW 2480

Drawing Title  
**FLOOR PLAN L3**

Checked  
AJ

Approved  
CH

Scale  
1:200  
@ A1 sheet size

50mm on original

**WOODS BAGOT** AUSTRALIA ASIA MIDDLE EAST EUROPE NORTH AMERICA

Project number  
120179

Drawing number  
DA2203

Status  
FOR APPROVAL

Revision  
E





1 FLOOR PLAN L5  
SCALE 1 : 200

**LEGEND**

- EXISTING WALL TO BE RETAINED
- NEW WALL
- EXISTING WORKS NOT IN SCOPE

**Department Legend**

- 3.4 Medical Imaging - Ultra/Mamm/CT
- 3.5 Medical Imaging - PET
- 3.6 Medical Imaging - Support
- 3.7 Medical Imaging - MRI
- 3.9 Medical Imaging - XRay & Fluoroscopy

- Main Circulation
- Services
- Vertical Circulation

- D ISSUE FOR INFORMATION
- C ISSUE FOR INFORMATION
- B ISSUE FOR INFORMATION
- A ISSUE FOR INFORMATION

- 13/11/14 AJ
- 7/11/14 AJ
- 03/10/14 AJ
- 18/09/14 AJ

Client  
**NSW GOVERNMENT** Health Infrastructure  
Project  
**LISMORE BASE HOSPITAL REDEVELOPMENT**  
60 Urumba Street Lismore NSW 2480

Drawing Title  
**FLOOR PLAN L5**  
Checked AJ Approved CH Scale 1 : 200  
© A1 sheet size  
50mm on original

**WOODS BAGOT** AUSTRALIA ASIA MIDDLE EAST EUROPE NORTH AMERICA  
Project number 120179 Drawing number DA2205 Revision D  
Status FOR APPROVAL



Copyright  
WOODS BAGOT  
Notes:  
CONTRACTOR MUST VERIFY ALL DIMENSIONS  
ON SITE BEFORE COMMENCING WORK OR  
PREPARING WORKSHOP DRAWINGS. DO NOT  
SCALE DRAWING.

**LEGEND**

- EXISTING WALL TO BE RETAINED
- NEW WALL
- EXISTING WORKS NOT IN SCOPE

**Department Legend**

- 4. Peri-Operative OR
- 4. Peri-Operative Suite
- 4. Peri-Operative Suite\_Admin
- 4. Peri-Operative Suite\_Admissions
- 4. Peri-Operative Suite\_Circulation
- 4. Peri-Operative Suite\_Staff
- Main Circulation
- Services
- Vertical Circulation

Rev	Description	Date	App'd	Rev	Description	Date	App'd
D	ISSUE FOR INFORMATION	13/11/14	AJ	D	ISSUE FOR INFORMATION	13/11/14	AJ
C	ISSUE FOR INFORMATION	03/10/14	AJ	C	ISSUE FOR INFORMATION	03/10/14	AJ
B	ISSUE FOR INFORMATION	18/09/14	AJ	B	ISSUE FOR INFORMATION	18/09/14	AJ
A	ISSUE FOR INFORMATION			A	ISSUE FOR INFORMATION		



Client  
**LISMORE BASE HOSPITAL REDEVELOPMENT**  
60 Uruba Street Lismore NSW 2480

Drawing title  
**FLOOR PLAN L6**

Checked: AJ  
Approved: CH  
Scale: 1:200  
© A1 sheet size  
50mm on original



Project number: 120179  
Drawing number: DA2206  
Status: FOR APPROVAL

Revision: D



1 FLOOR PLAN L7  
SCALE 1 : 200

Copyright  
WOODS BAGOT  
Notes:  
CONTRACTOR MUST VERIFY ALL DIMENSIONS  
ON SITE BEFORE COMMENCING WORK OR  
PREPARING WORKSHOP DRAWINGS. DO NOT  
SCALE DRAWING.

- LEGEND**
- EXISTING WALL TO BE RETAINED
  - NEW WALL
  - EXISTING WORKS NOT IN SCOPE
- Department Legend**
- 5. CSSD
  - 20. Biomedical Engineering
  - Main Circulation
  - Services
  - Vertical Circulation

Rev	Description	Date	App'd	Rev	Description	Date	App'd
D	ISSUE FOR INFORMATION	13/11/14	AJ	A	ISSUE FOR INFORMATION	18/09/14	AJ
C	ISSUE FOR INFORMATION	07/11/14	AJ	B	ISSUE FOR INFORMATION	03/10/14	AJ
B	ISSUE FOR INFORMATION	03/10/14	AJ	A	ISSUE FOR INFORMATION	18/09/14	AJ
A	ISSUE FOR INFORMATION	18/09/14	AJ				

Client  
**NSW Health Infrastructure**  
GOVERNMENT

Project  
**LISMORE BASE HOSPITAL REDEVELOPMENT**  
60 Urabta Street Lismore NSW 2480

Drawing title  
**FLOOR PLAN L7**

Checked  
AJ

Approved  
CH

Scale  
1 : 200  
@ A1 sheet size

50mm on original

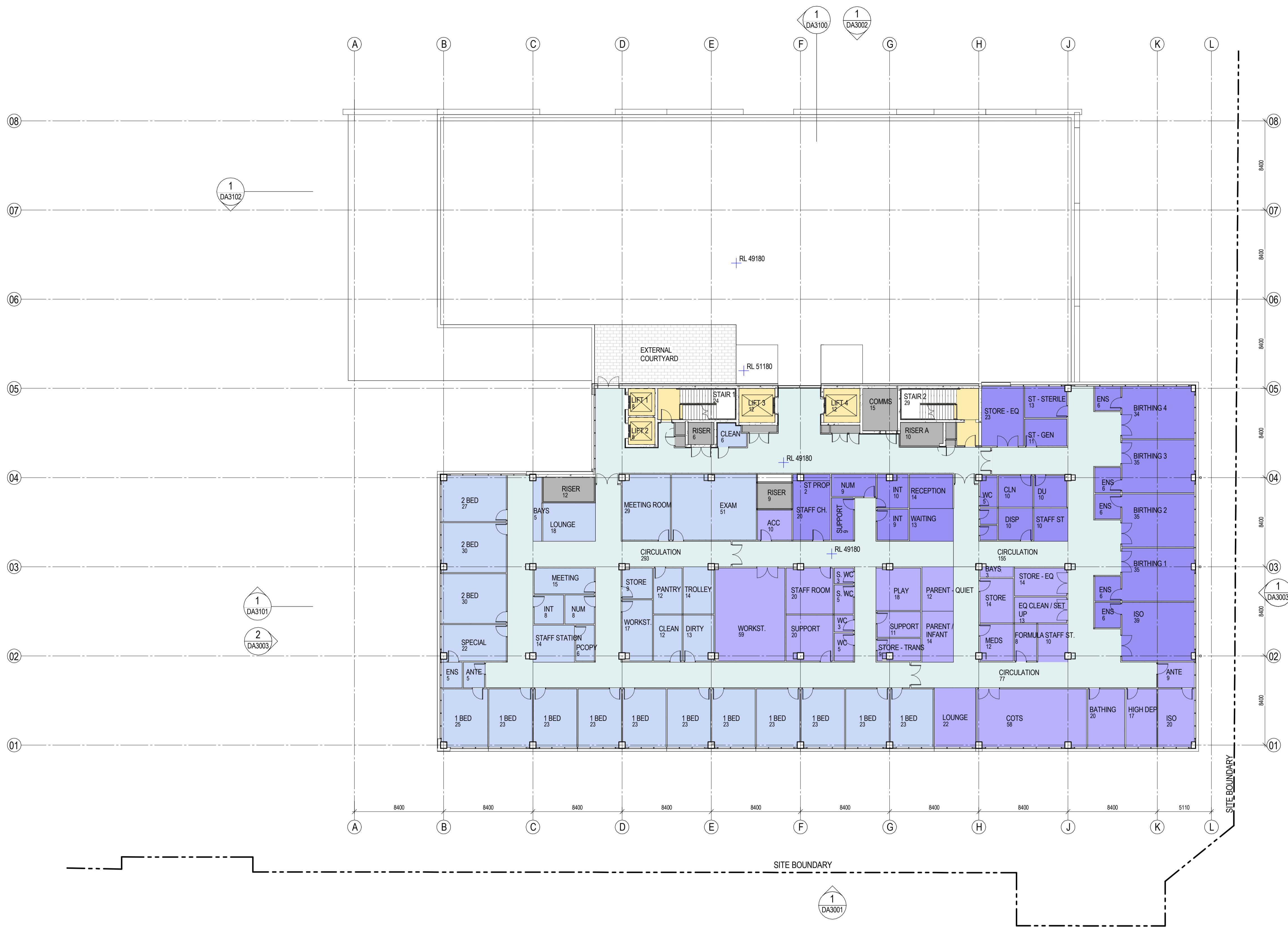
**WOODS BAGOT** AUSTRALIA ASIA MIDDLE EAST EUROPE NORTH AMERICA

Project number  
120179

Drawing number  
DA2207

Status  
FOR APPROVAL

Revision  
D



1 FLOOR PLAN L8  
SCALE 1 : 200

**LEGEND**

- EXISTING WALL TO BE RETAINED
- NEW WALL
- EXISTING WORKS NOT IN SCOPE

**Department Legend**

- 9.1 IPU
- 9.2 Birthing
- 9.3 Special Care Nursery
- Main Circulation

- Services
- Vertical Circulation

Rev	Description	Date	App'd	Rev	Description	Date	App'd
D	ISSUE FOR INFORMATION	13/11/14	AJ	A	ISSUE FOR INFORMATION	18/09/14	AJ
C	ISSUE FOR INFORMATION	07/11/14	AJ	B	ISSUE FOR INFORMATION	03/10/14	AJ
B	ISSUE FOR INFORMATION	03/10/14	AJ	A	ISSUE FOR INFORMATION	18/09/14	AJ

Client  
**NSW Health Infrastructure**  
GOVERNMENT

Project  
**LISMORE BASE HOSPITAL REDEVELOPMENT**  
60 Uruba Street Lismore NSW 2480

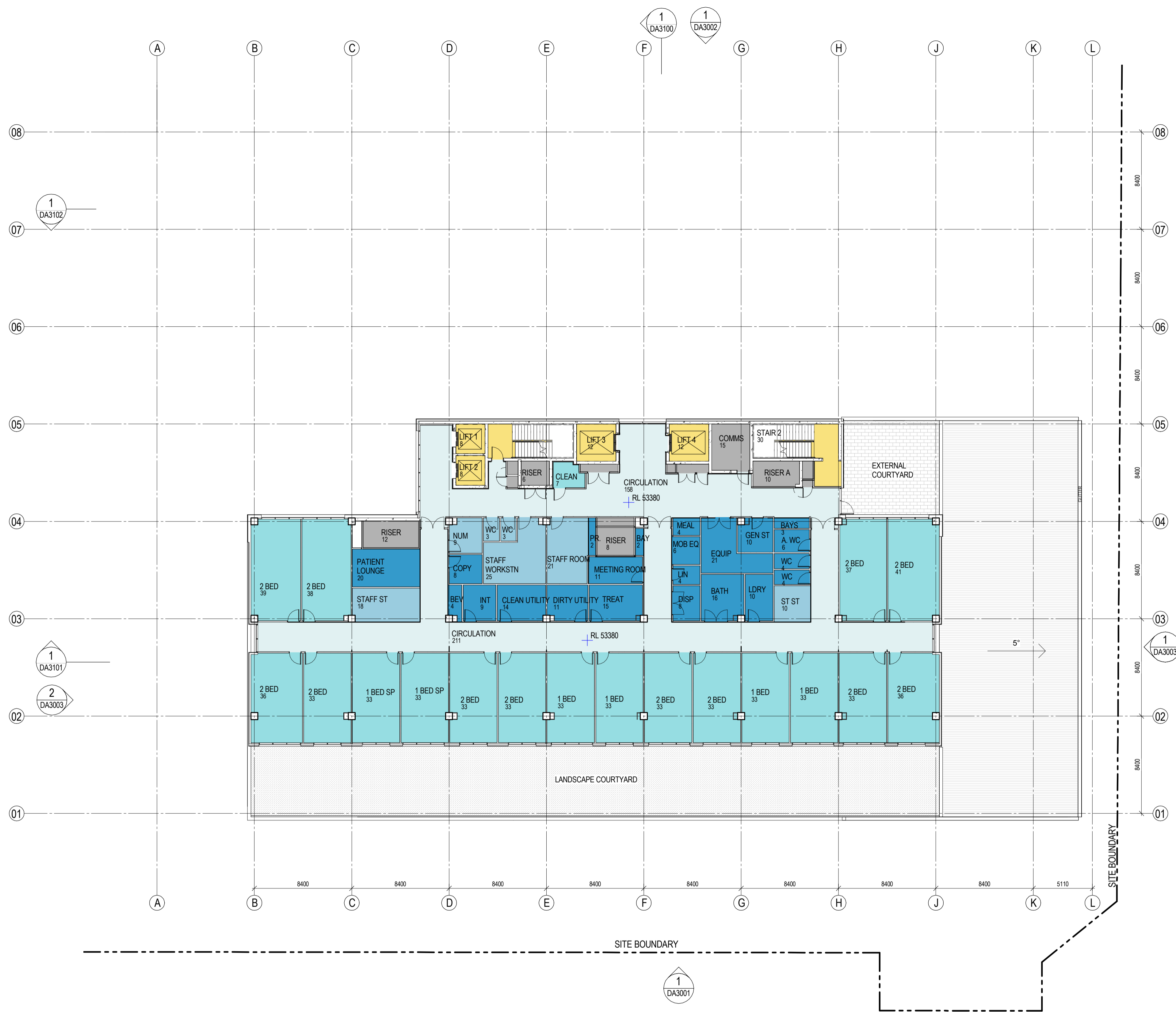
Drawing Title  
**FLOOR PLAN L8**

Checked: AJ  
Approved: CH  
Scale: 1 : 200  
© A1 sheet size  
50mm on original

**WOODS BAGOT** AUSTRALIA ASIA MIDDLE EAST EUROPE NORTH AMERICA

Project number: 120179  
Drawing number: DA2208  
Status: FOR APPROVAL

Revision: D



1 FLOOR PLAN L9  
SCALE 1 : 200

Copyright  
WOODS BAGOT  
Notes:  
CONTRACTOR MUST VERIFY ALL DIMENSIONS  
ON SITE BEFORE COMMENCING WORK OR  
PREPARING WORKSHOP DRAWINGS. DO NOT  
SCALE DRAWING.

**LEGEND**

- EXISTING WALL TO BE RETAINED
- NEW WALL
- EXISTING WORKS NOT IN SCOPE

**Department Legend**

- 8.1 IPU
- 8.1 IPU Staff
- 8.1 IPU Support
- 9.1 IPU

- Main Circulation
- Services
- Vertical Circulation

Rev	Description	Date	App'd	Rev	Description	Date	App'd
D	ISSUE FOR INFORMATION	13/11/14	AJ				
C	ISSUE FOR INFORMATION	7/11/14	AJ				
B	ISSUE FOR INFORMATION	03/10/14	AJ				
A	ISSUE FOR INFORMATION	18/09/14	AJ				



Project  
**LISMORE BASE HOSPITAL  
REDEVELOPMENT**  
60 Uruba Street Lismore NSW 2480

Drawing title:  
**FLOOR PLAN L9**

Checked: AJ  
Approved: CH  
Scale: 1 : 200  
© A1 sheet size  
50mm on original



Project number: 120179  
Drawing number: DA2209  
Status: FOR APPROVAL  
Revision: D







1 FLOOR PLAN L12  
SCALE 1 : 200

Copyright  
WOODS BAGOT  
Notes:  
CONTRACTOR MUST VERIFY ALL DIMENSIONS  
ON SITE BEFORE COMMENCING WORK OR  
PREPARING WORKSHOP DRAWINGS. DO NOT  
SCALE DRAWING.

**LEGEND**

- EXISTING WALL TO BE RETAINED
- NEW WALL
- EXISTING WORKS NOT IN SCOPE

**Department Legend**

- 10.1 Paediatric Admin
- 10.1 Paediatric Ext
- 10.1 Paediatric IPU
- 10.1 Paediatric Staff
- 10.1 Paediatric Support
- Main Circulation
- Services
- Vertical Circulation

Rev	Description	Date	App'd	Rev	Description	Date	App'd
D	ISSUE FOR INFORMATION	13/11/14	AJ				
C	ISSUE FOR INFORMATION	7/11/14	AJ				
B	ISSUE FOR INFORMATION	03/10/14	AJ				
A	ISSUE FOR INFORMATION	18/09/14	AJ				



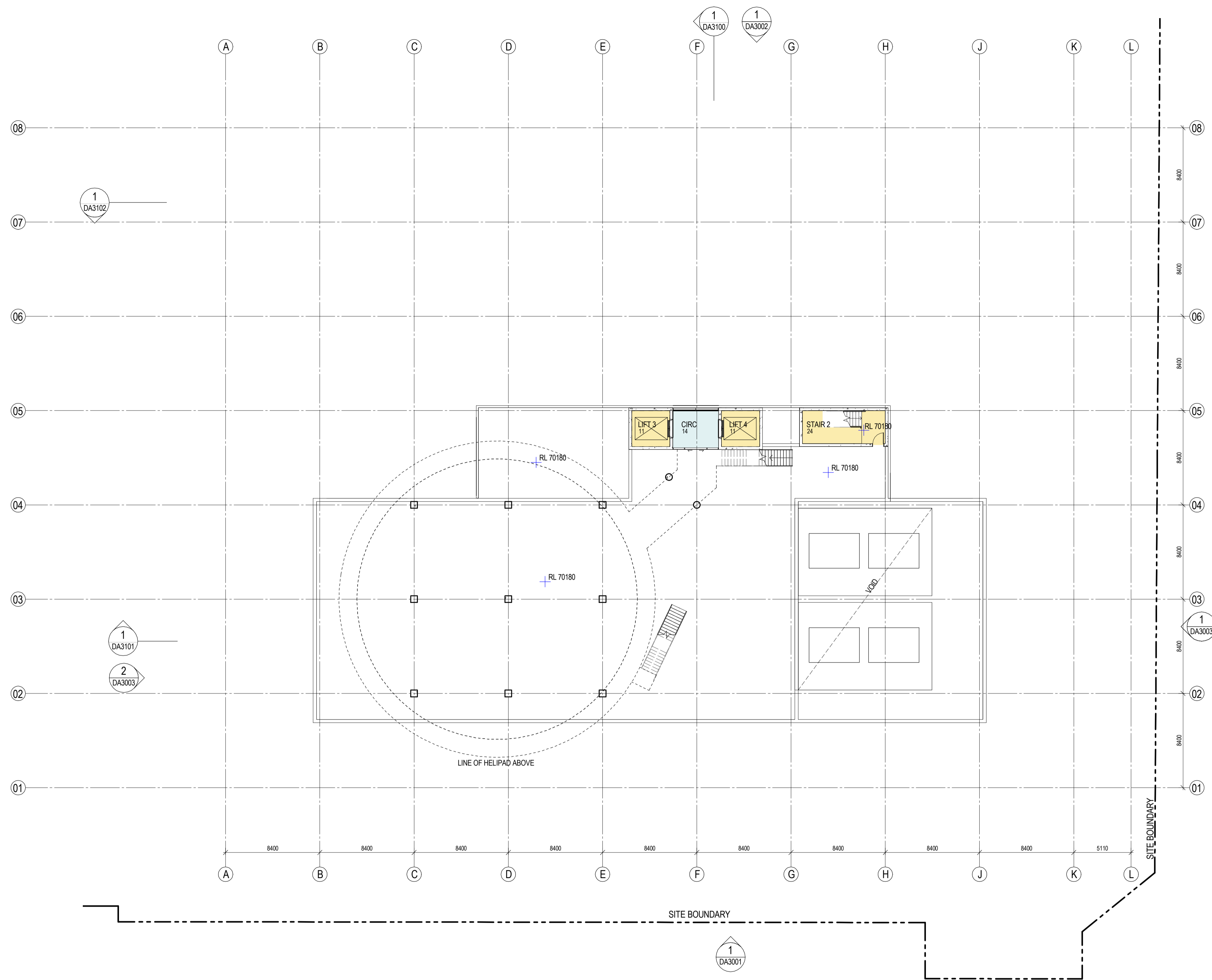
Project  
**LISMORE BASE HOSPITAL  
REDEVELOPMENT**  
60 Urumba Street Lismore NSW 2480

Drawing title:  
**FLOOR PLAN L12**

Checked: AJ  
Approved: CH  
Scale: 1 : 200  
© A1 sheet size  
50mm on original



Project number: 120179  
Drawing number: DA2212  
Status: FOR APPROVAL  
Revision: D



1 ROOF PLAN  
SCALE 1 : 200

Copyright  
WOODS BAGOT  
Notes:  
CONTRACTOR MUST VERIFY ALL DIMENSIONS  
ON SITE BEFORE COMMENCING WORK OR  
PREPARING WORKSHOP DRAWINGS. DO NOT  
SCALE DRAWING.

**LEGEND**

- EXISTING WALL TO BE RETAINED
- NEW WALL
- EXISTING WORKS NOT IN SCOPE

**Department Legend**

- Main Circulation
- Vertical Circulation

Rev	Description	Date	App'd
C	ISSUE FOR INFORMATION	13/11/14	AJ
B	ISSUE FOR INFORMATION	7/11/14	AJ
A	ISSUE FOR INFORMATION	03/10/14	AJ

Date	App'd
13/11/14	AJ
7/11/14	AJ
03/10/14	AJ

Client  
**NSW GOVERNMENT** | **Health Infrastructure**

Project  
**LISMORE BASE HOSPITAL REDEVELOPMENT**  
60 Urumba Street Lismore NSW 2480

Drawing title  
**ROOF PLAN**

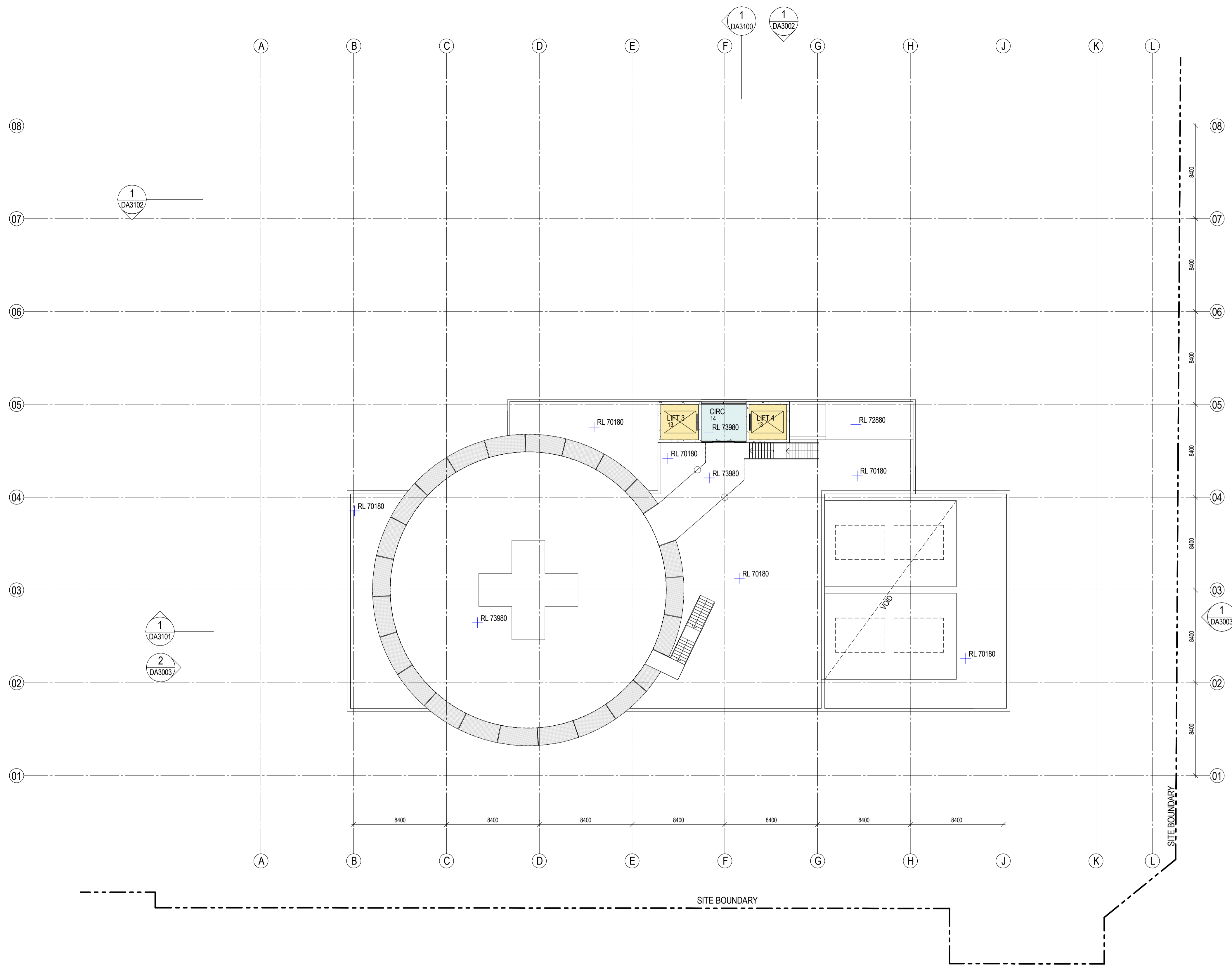
Checked	Approved	Scale
AJ	CH	1 : 200
		© A1 sheet size

50mm on original

**WOODS BAGOT** AUSTRALIA ASIA MIDDLE EAST EUROPE NORTH AMERICA

Project number: 120179  
Drawing number: DA2213  
Status: FOR APPROVAL

Revision: C



1 FLOOR PLAN HELIPAD & ROOF  
SCALE 1 : 200

Copyright  
WOODS BAGOT  
Notes:  
CONTRACTOR MUST VERIFY ALL DIMENSIONS  
ON SITE BEFORE COMMENCING WORK OR  
PREPARING WORKSHOP DRAWINGS. DO NOT  
SCALE DRAWING.

**LEGEND**

- EXISTING WALL TO BE RETAINED
- NEW WALL
- EXISTING WORKS NOT IN SCOPE

**Department Legend**

- Main Circulation
- Vertical Circulation

- D ISSUE FOR INFORMATION
- C ISSUE FOR INFORMATION
- B ISSUE FOR INFORMATION
- A ISSUE FOR INFORMATION

13/11/14 AJ  
7/11/14 AJ  
03/10/14 AJ  
18/09/14 AJ

Client  
**NSW** Health  
GOVERNMENT Infrastructure  
Project  
**LISMORE BASE HOSPITAL  
REDEVELOPMENT**  
60 Uruba Street Lismore NSW 2480

Drawing title  
**FLOOR PLAN HELIPAD & ROOF**

Checked  
AJ  
Approved  
CH  
Scale  
1 : 200  
© A1 sheet size  
50mm on original

**WOODS BAGOT**  
AUSTRALIA  
ASIA  
MIDDLE EAST  
EUROPE  
NORTH AMERICA

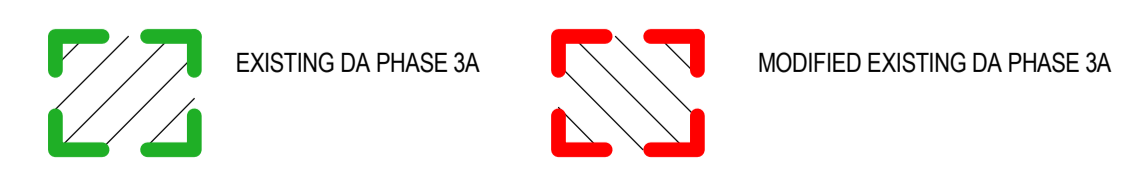
Project number  
120179  
Drawing number  
DA2214  
Revision  
D  
Status  
FOR APPROVAL



1 SOUTH ELEVATION  
SCALE 1 : 200

Copyright  
WOODS BAGOT  
Notes:  
CONTRACTOR MUST VERIFY ALL DIMENSIONS  
ON SITE BEFORE COMMENCING WORK. OR  
PREPARING WORKSHOP DRAWINGS. DO NOT  
SCALE DRAWING.

LEGEND	
	METALLIX BRICK
	ALUMINIUM COMPOSITE PANEL
	ALUMINIUM COMPOSITE PANEL. FEATURE COLOUR
	COLOURBACK GLASS - DARK GREY
	PERFORMANCE GLAZING
	RENDERED CONCRETE WALL
	FOLDED METAL SHEET
	ALUMINIUM PLANT ROOM LOUVRES



Rev	Description	Date	App'd
D	ISSUE FOR INFORMATION	13/11/14	AJ
C	ISSUE FOR INFORMATION	7/11/14	AJ
B	ISSUE FOR INFORMATION	03/10/14	AJ
A	ISSUE FOR INFORMATION	18/09/14	AJ

Client  
**NSW GOVERNMENT** | **Health Infrastructure**

Project  
**LISMORE BASE HOSPITAL REDEVELOPMENT**  
60 Urumba Street Lismore NSW 2480

Drawing title  
**SOUTH ELEVATION**

Checked: **AJ** Approved: **CH** Scale: **1 : 200**  
© A1 sheet size  
50mm on original

**WOODS BAGOT** AUSTRALIA ASIA MIDDLE EAST EUROPE NORTH AMERICA

Project number: **120179** Drawing number: **DA3001** Revision: **D**

Status: **FOR APPROVAL**







1 SECTION 1  
SCALE 1:200

Copyright  
WOODS BAGOT  
Notes:  
CONTRACTOR MUST VERIFY ALL DIMENSIONS  
ON SITE BEFORE COMMENCING WORK OR  
PREPARING WORKSHOP DRAWINGS. DO NOT  
SCALE DRAWING.

**LEGEND**

- EXISTING WALL TO BE RETAINED
- NEW WALL
- EXISTING WORKS NOT IN SCOPE
- EXISTING DA PHASE 3A
- MODIFIED EXISTING DA PHASE 3A

Rev	Description	Date	App'd
D	ISSUE FOR INFORMATION	13/11/14	AJ
C	ISSUE FOR INFORMATION	7/11/14	AJ
B	ISSUE FOR INFORMATION	03/10/14	AJ
A	ISSUE FOR INFORMATION	18/09/14	AJ

Rev	Description	Date	App'd
D	ISSUE FOR INFORMATION	13/11/14	AJ
C	ISSUE FOR INFORMATION	7/11/14	AJ
B	ISSUE FOR INFORMATION	03/10/14	AJ
A	ISSUE FOR INFORMATION	18/09/14	AJ

Client  
 **Health Infrastructure**  
Project  
**LISMORE BASE HOSPITAL REDEVELOPMENT**  
60 Uruba Street Lismore NSW 2480

Drawing title  
**SECTION 1**

Checked: AJ  
Approved: CH  
Scale: 1:200  
© A1 sheet size  
50mm on original

**WOODS BAGOT** AUSTRALIA ASIA MIDDLE EAST EUROPE NORTH AMERICA



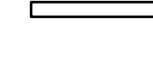
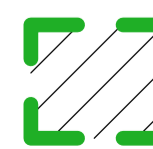
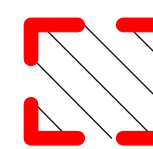
Project number: 120179  
Drawing number: DA3100  
Status: FOR APPROVAL  
Revision: D



1 SECTION 2  
SCALE 1:200

Copyright  
WOODS BAGOT  
Notes:  
CONTRACTOR MUST VERIFY ALL DIMENSIONS  
ON SITE BEFORE COMMENCING WORK OR  
PREPARING WORKSHOP DRAWINGS. DO NOT  
SCALE DRAWING.

**LEGEND**

-  EXISTING WALL TO BE RETAINED
-  NEW WALL
-  EXISTING WORKS NOT IN SCOPE
-  EXISTING DA PHASE 3A
-  MODIFIED EXISTING DA PHASE 3A

- D ISSUE FOR INFORMATION
- C ISSUE FOR INFORMATION
- B ISSUE FOR INFORMATION
- A ISSUE FOR INFORMATION

- 13/11/14 AJ
- 7/11/14 AJ
- 03/10/14 AJ
- 18/09/14 AJ

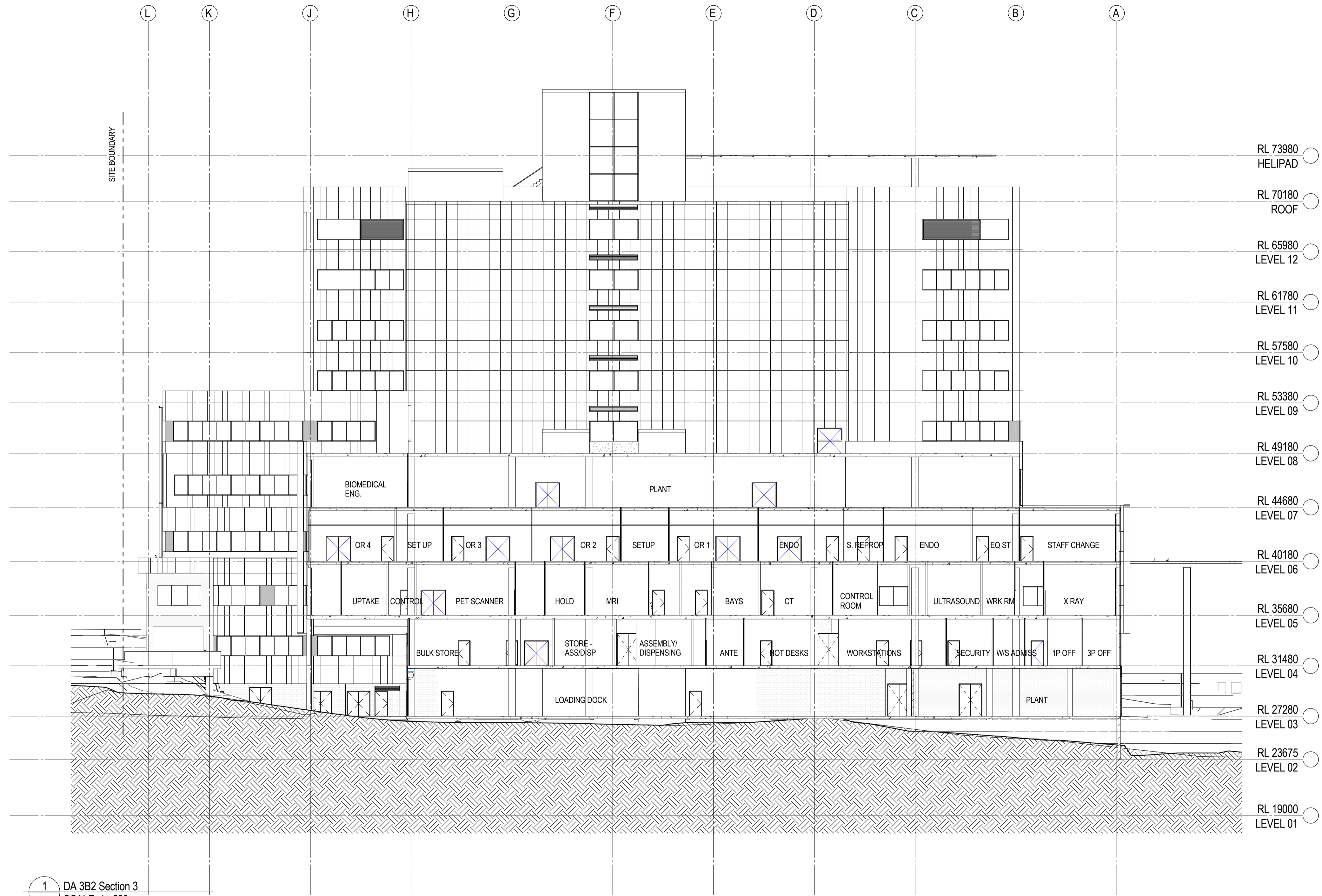
Client  
**NSW** Health  
GOVERNMENT Infrastructure  
Project  
**LISMORE BASE HOSPITAL  
REDEVELOPMENT**  
60 Urumba Street Lismore NSW 2480

Drawing title  
**SECTION 2**

Checked Approved Scale  
CheckerApprover 1:200  
© A1 sheet size  
50mm on original

**WOODS BAGOT** AUSTRALIA  
ASIA  
MIDDLE EAST  
EUROPE  
NORTH AMERICA

Project number 120179 Drawing number DA3101 Revision D  
Status FOR APPROVAL



1 DA 3B2 Section 3  
SCALE 1 : 200

Copyright  
WOODS BAGOT

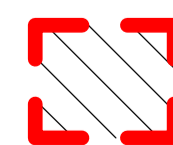
Notes:  
CONTRACTOR MUST VERIFY ALL DIMENSIONS  
ON SITE BEFORE COMMENCING WORK OR  
PREPARING WORKSHOP DRAWINGS. DO NOT  
SCALE DRAWING.

**LEGEND**

- EXISTING WALL TO BE RETAINED
- NEW WALL
- EXISTING WORKS NOT IN SCOPE



EXISTING DA PHASE 3A



MODIFIED EXISTING DA PHASE 3A



Project  
**LISMORE BASE HOSPITAL  
REDEVELOPMENT**

60 Uruba Street Lismore NSW 2480

Drawing title  
**SECTION 3**

Checked: AJ  
Approved: CH  
Scale: 1 : 200  
© A1 sheet size  
50mm on original

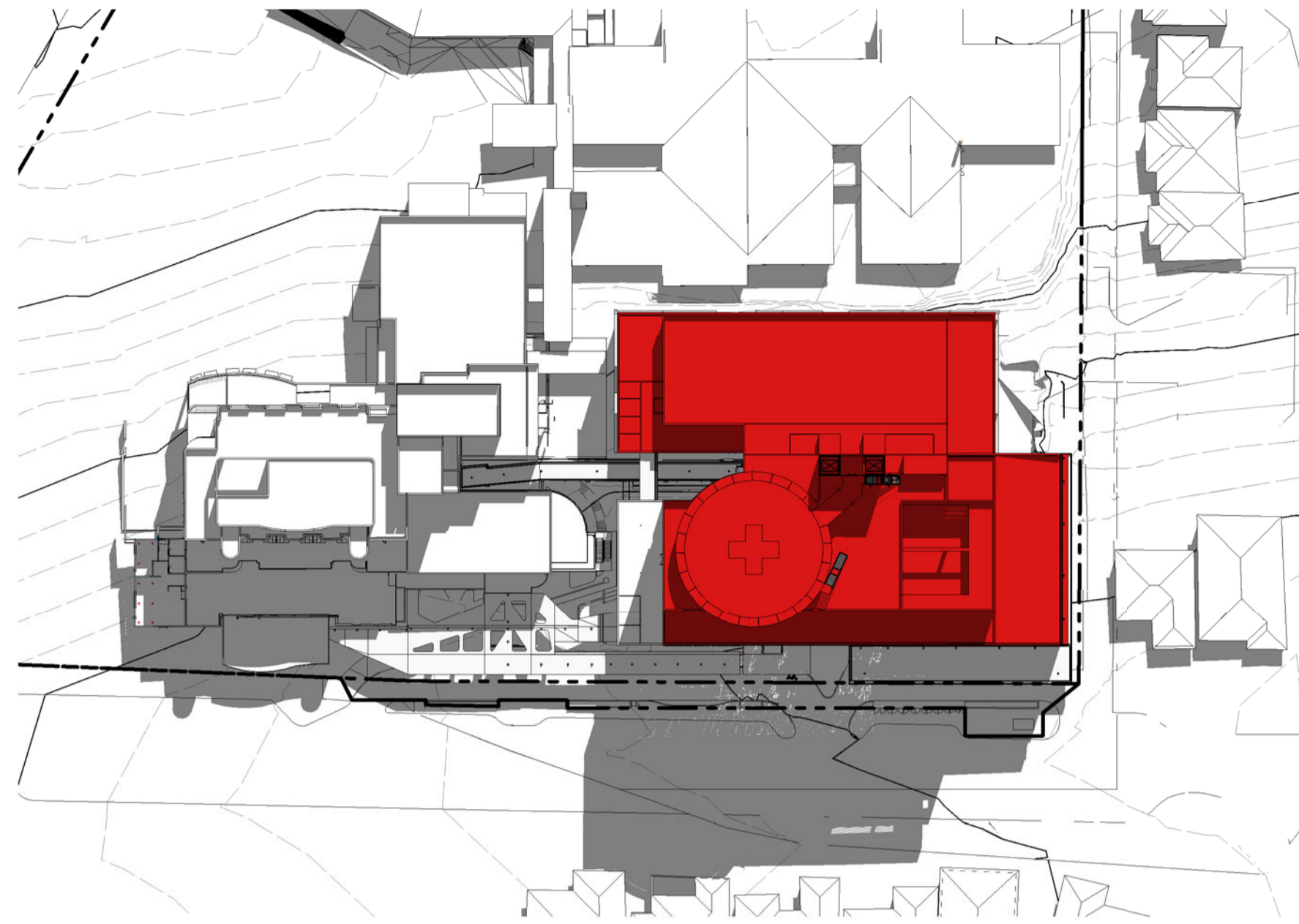


Project number: 120179  
Drawing number: DA3102  
Revision: A  
Status: FOR APPROVAL

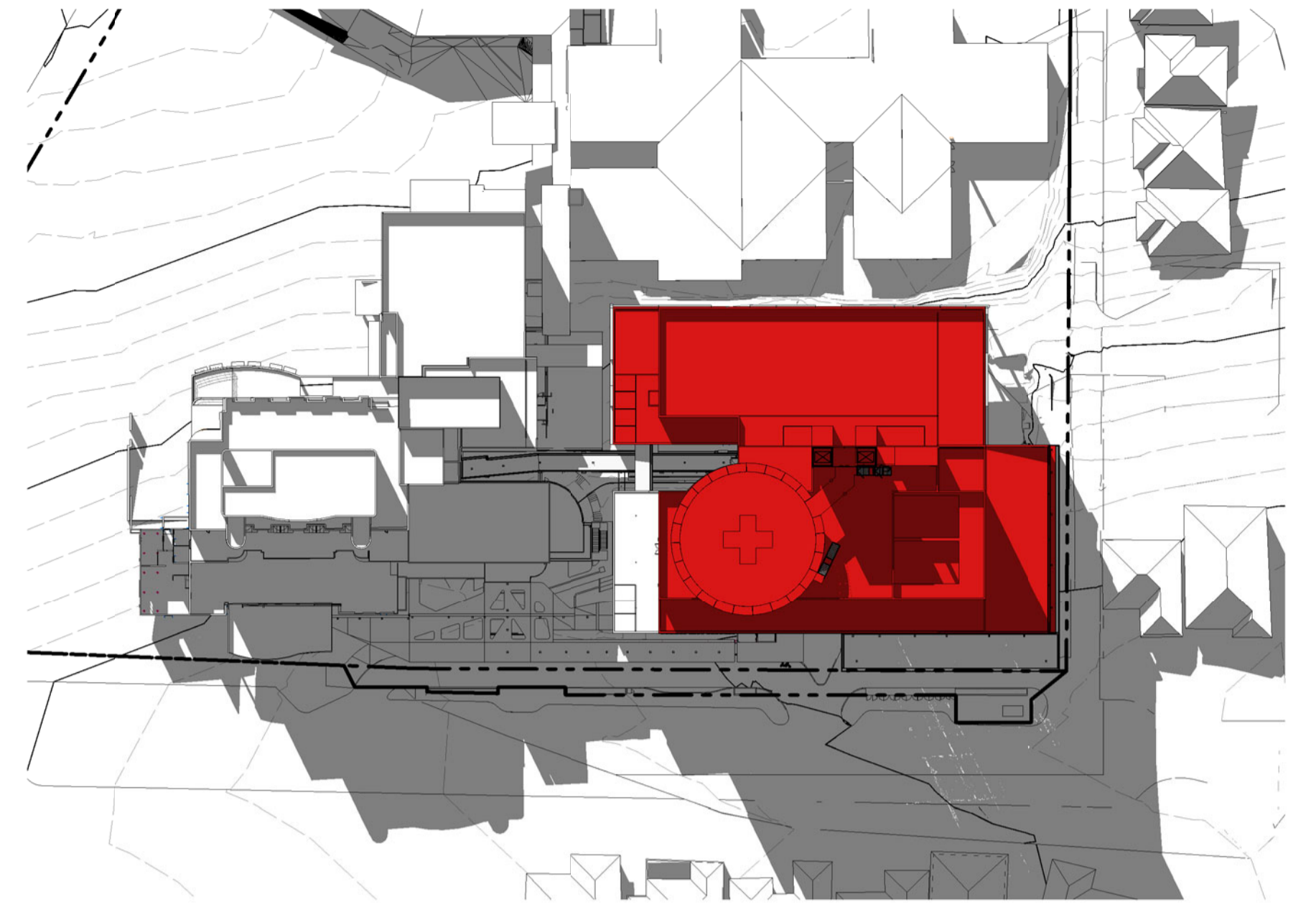
Rev	Description	Date	App'd	Rev	Description	Date	App'd
A	ISSUE FOR INFORMATION	13/11/14	AJ				



4 3B2 - SHADOW DIAGRAM - 22 JUN 9AM  
SCALE 1 : 1000



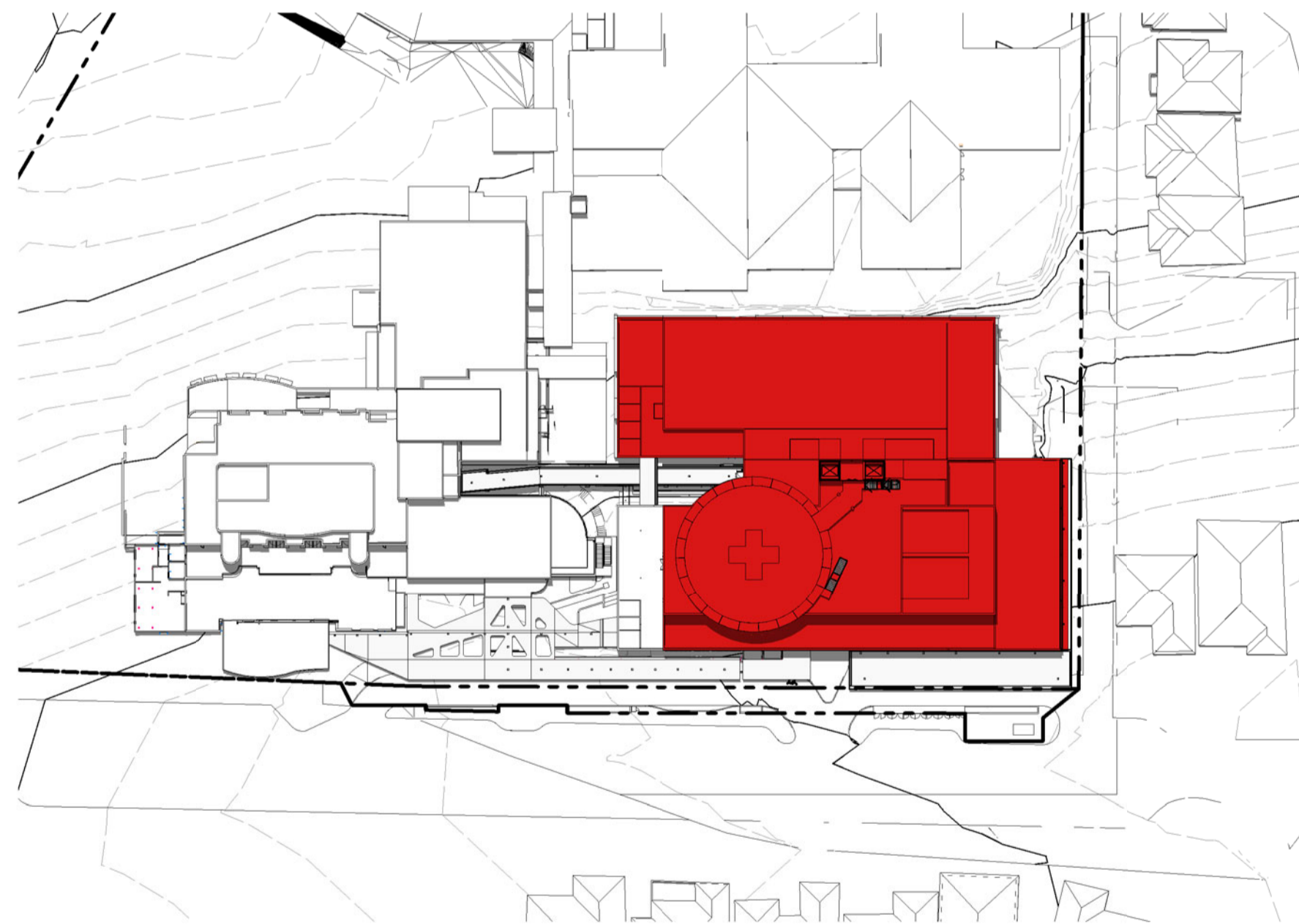
5 3B2 - SHADOW DIAGRAM - 22 JUN 12PM  
SCALE 1 : 1000



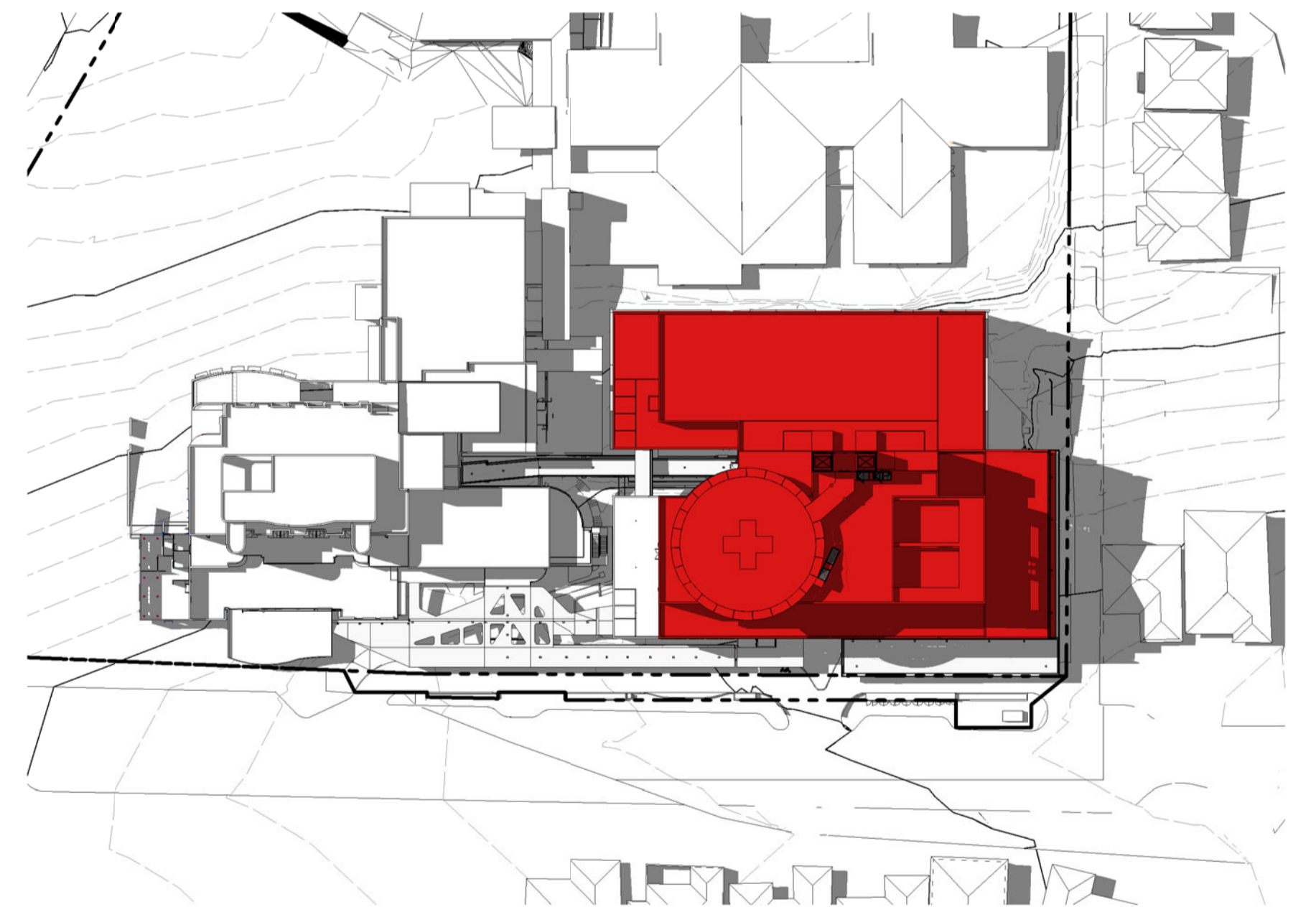
6 3B2 - SHADOW DIAGRAM - 22 JUN 3PM  
SCALE 1 : 1000



1 3B2 - SHADOW DIAGRAM - 22 DEC 9AM  
SCALE 1 : 1000



2 3B2 - SHADOW DIAGRAM - 22 DEC 12PM  
SCALE 1 : 1000



3 3B2 - SHADOW DIAGRAM - 22 DEC 3PM  
SCALE 1 : 1000

Copyright  
WOODS BAGOT  
Notes:  
CONTRACTOR MUST VERIFY ALL DIMENSIONS  
ON SITE BEFORE COMMENCING WORK OR  
PREPARING WORKSHOP DRAWINGS. DO NOT  
SCALE DRAWING.



Client  
LISMORE BASE HOSPITAL  
REDEVELOPMENT  
60 Uruba Street Lismore NSW 2480

Drawing title  
SUN SHADOW DIAGRAMS 3B

Checked  
AJ  
Approved  
CH  
Scale  
1 : 1000  
@ A1 sheet size  
50mm on original

**WOODS BAGOT** AUSTRALIA  
ASIA  
MIDDLE EAST  
EUROPE  
NORTH AMERICA

Project number  
120179  
Drawing number  
DA8001  
Status  
FOR APPROVAL  
Revision  
A

Rev	Description	Date	App'd	Rev	Description	Date	App'd
A	ISSUE FOR INFORMATION	7/11/14	AJ				



NORTH PERSPECTIVE



WEST PERSPECTIVE

Copyright  
WOODS BAGOT  
Notes:  
CONTRACTOR MUST VERIFY ALL DIMENSIONS  
ON SITE BEFORE COMMENCING WORK OR  
PREPARING WORKSHOP DRAWINGS. DO NOT  
SCALE DRAWING.

Rev	Description	Date	App'd	Rev	Description	Date	App'd
C	ISSUE FOR INFORMATION	13/11/14	AJ				
B	ISSUE FOR INFORMATION	7/11/14	AJ				
A	ISSUE FOR INFORMATION	03/10/14	AJ				

Client  
**NSW** Health  
GOVERNMENT Infrastructure

Project  
**LISMORE BASE HOSPITAL  
REDEVELOPMENT**  
60 Urumba Street Lismore NSW 2480

Drawing title  
**3D PERSPECTIVE**

Checked  
AJ

Approved  
CH

Scale  
@ A1 sheet size  
50mm on original

**WOODS BAGOT** AUSTRALIA  
ASIA  
MIDDLE EAST  
EUROPE  
NORTH AMERICA

Project number  
120179

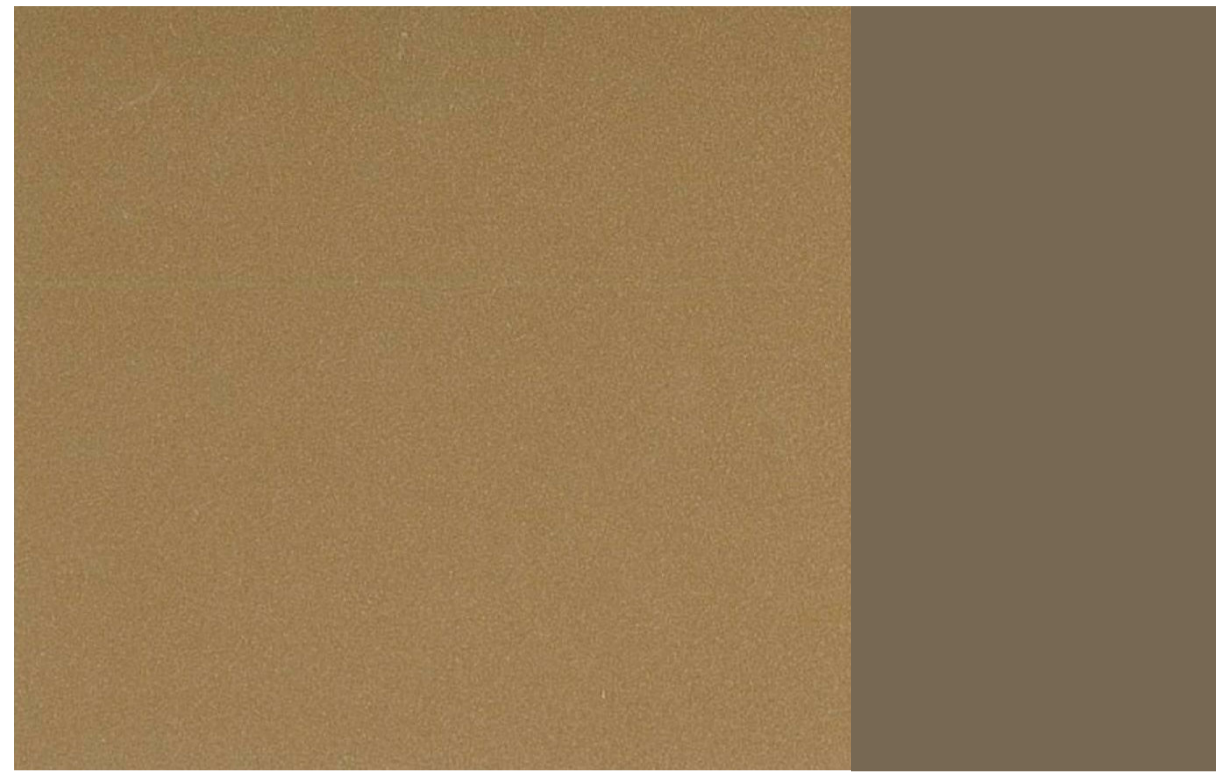
Drawing number  
DA8002

Status  
FOR APPROVAL

Revision  
C



CE:14 - COLOUR C



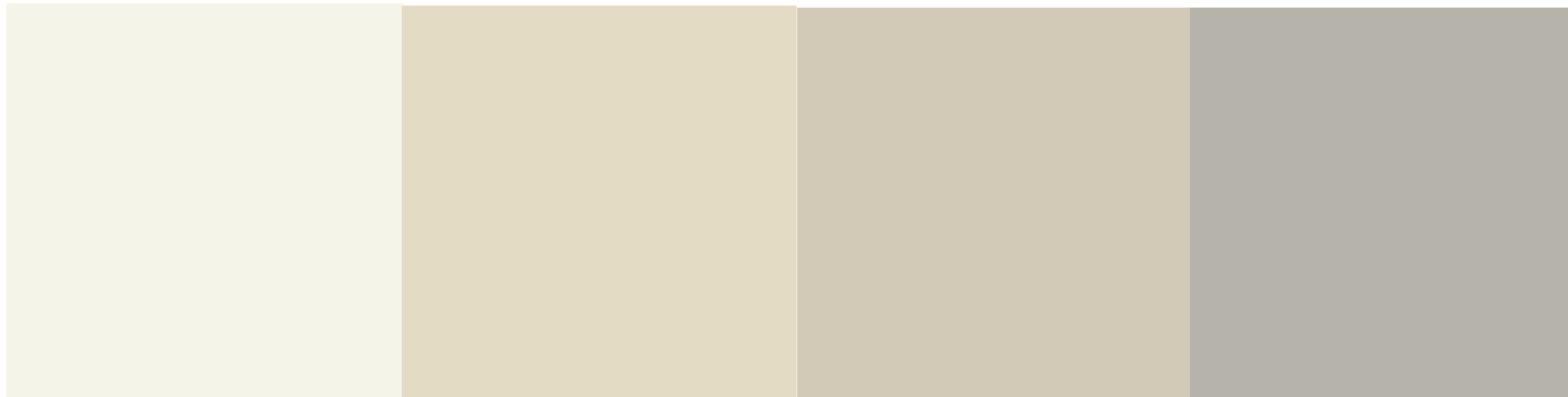
CD:02 METALLIC BRASS COFFEE



GL:01



CE:14 - COLOUR B



CD:01 - COLOUR A B C D



CE:14 - COLOUR A



CD:01 - COLOUR E



BK:01 - BRICK

Copyright  
WOODS BAGOT  
Notes:  
CONTRACTOR MUST VERIFY ALL DIMENSIONS  
ON SITE BEFORE COMMENCING WORK OR  
PREPARING WORKSHOP DRAWINGS. DO NOT  
SCALE DRAWING.



Client  
Project  
**LISMORE BASE HOSPITAL  
REDEVELOPMENT**  
60 Urumba Street Lismore NSW 2480

Drawing title  
**MATERIALS**

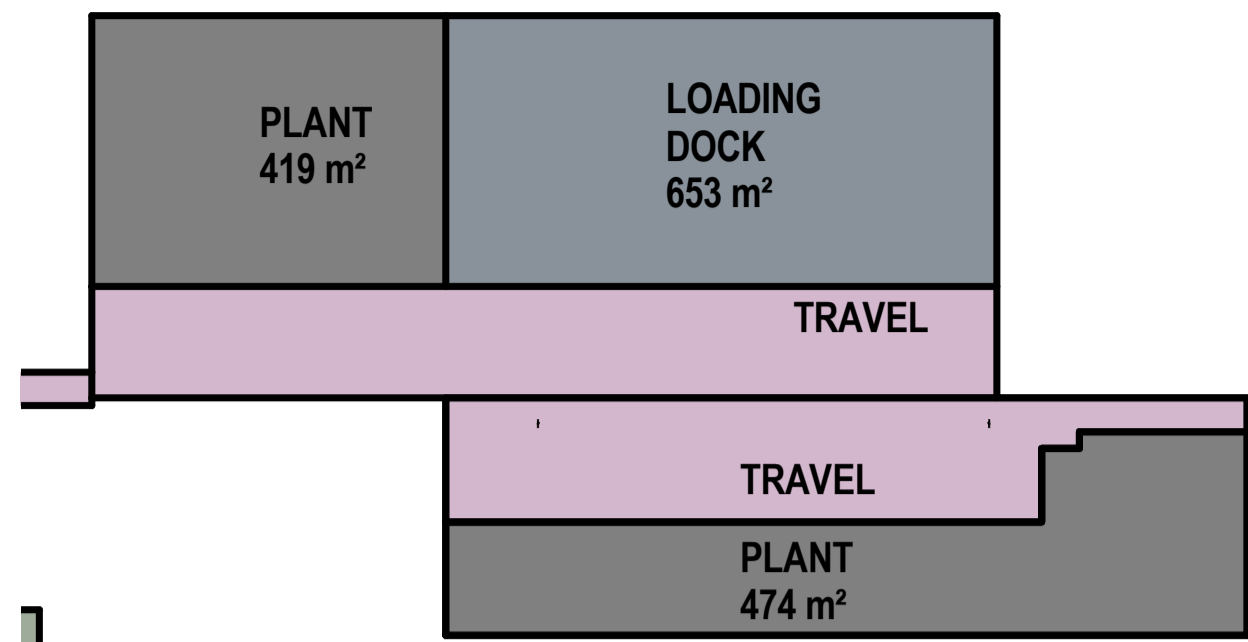
Checked  
AJ  
Approved  
CH  
Scale  
1 : 1  
© A1 sheet size  
50mm on original



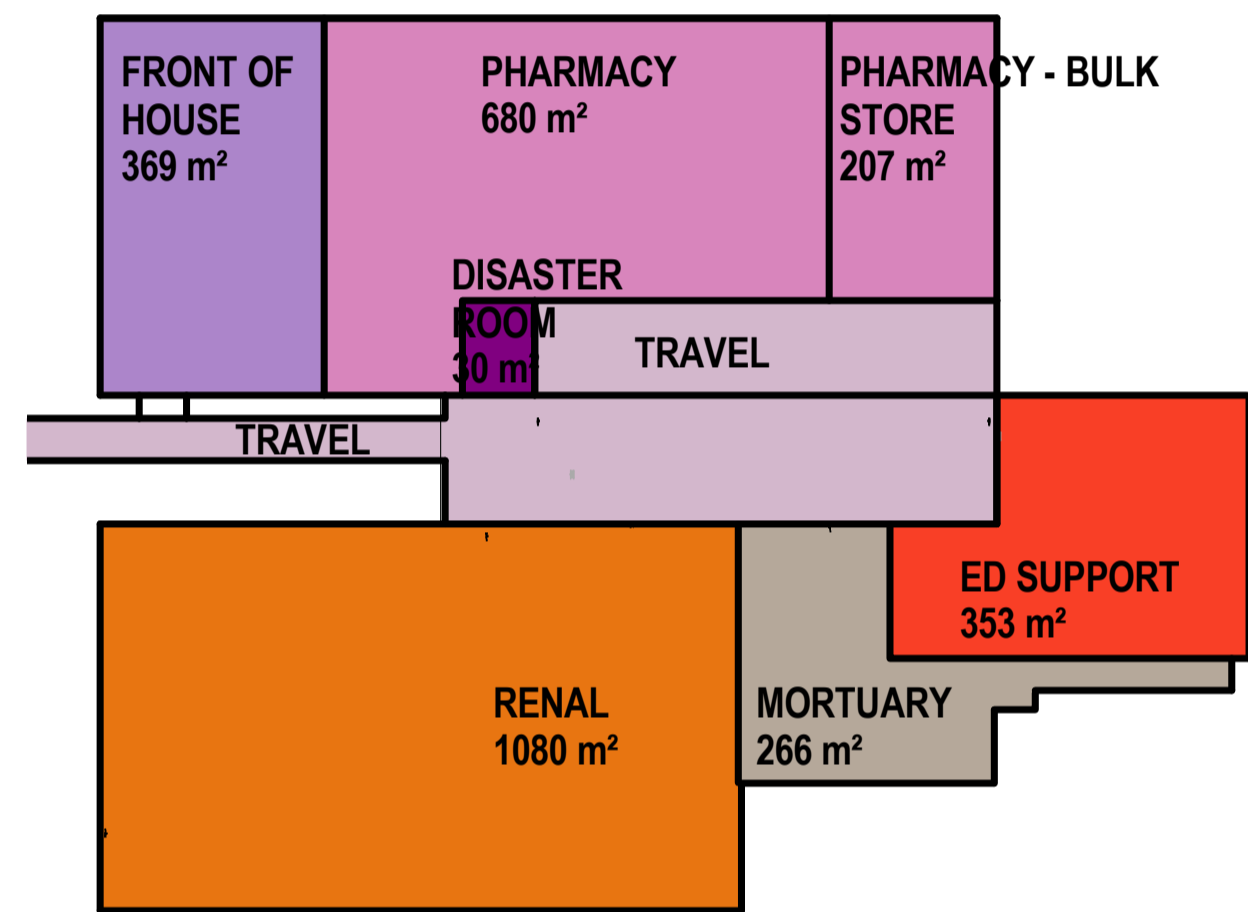
Project number  
**120179**  
Drawing number  
**DA8100**  
Revision  
**C**  
Status  
**FOR APPROVAL**

Rev	Description	Date	App'd
C	ISSUE FOR INFORMATION	13/11/14	AJ
B	ISSUE FOR INFORMATION	7/11/14	AJ
A	ISSUE FOR INFORMATION	03/10/14	AJ

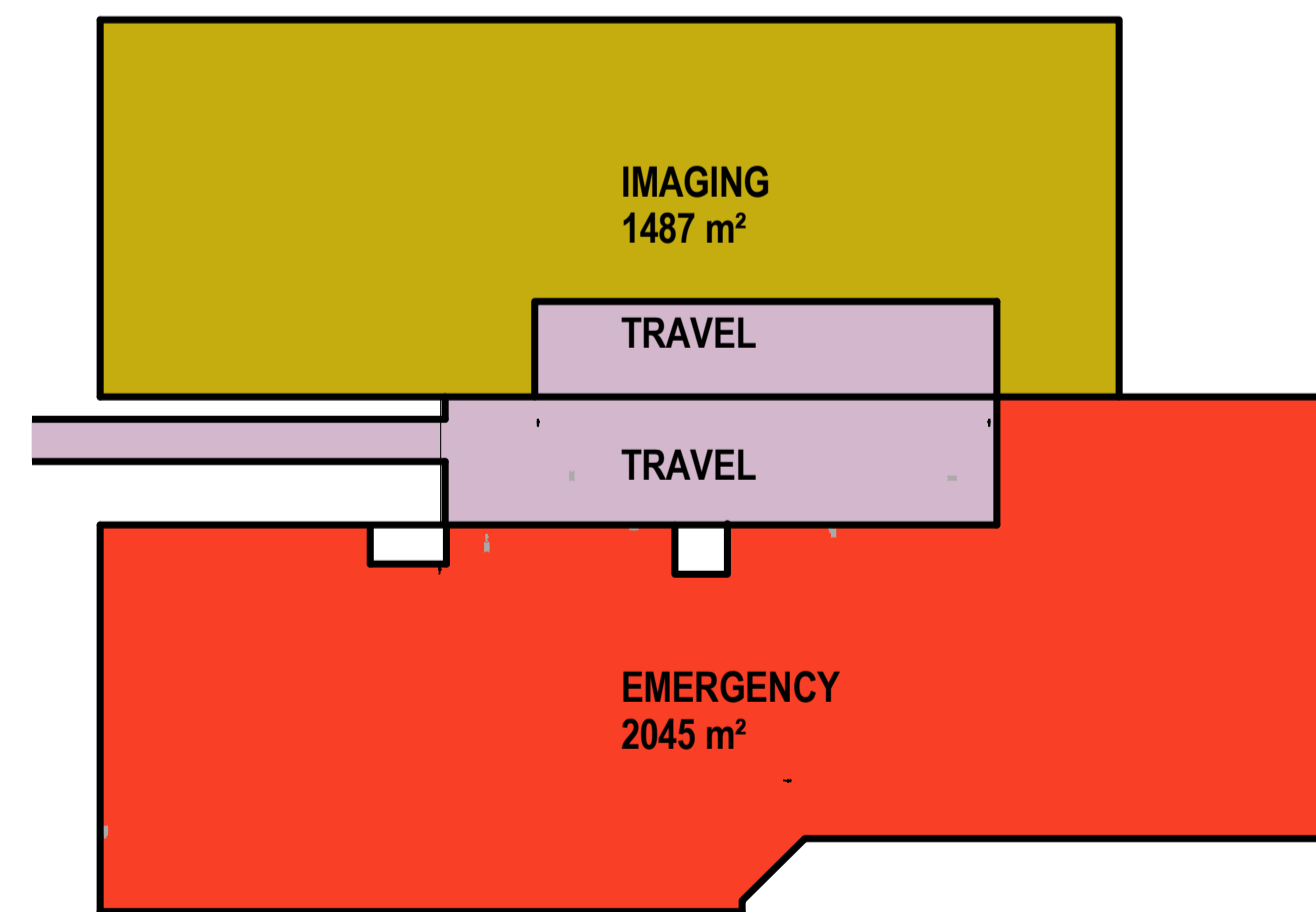
Rev	Description	Date	App'd	Rev	Description	Date	App'd



LEVEL 3

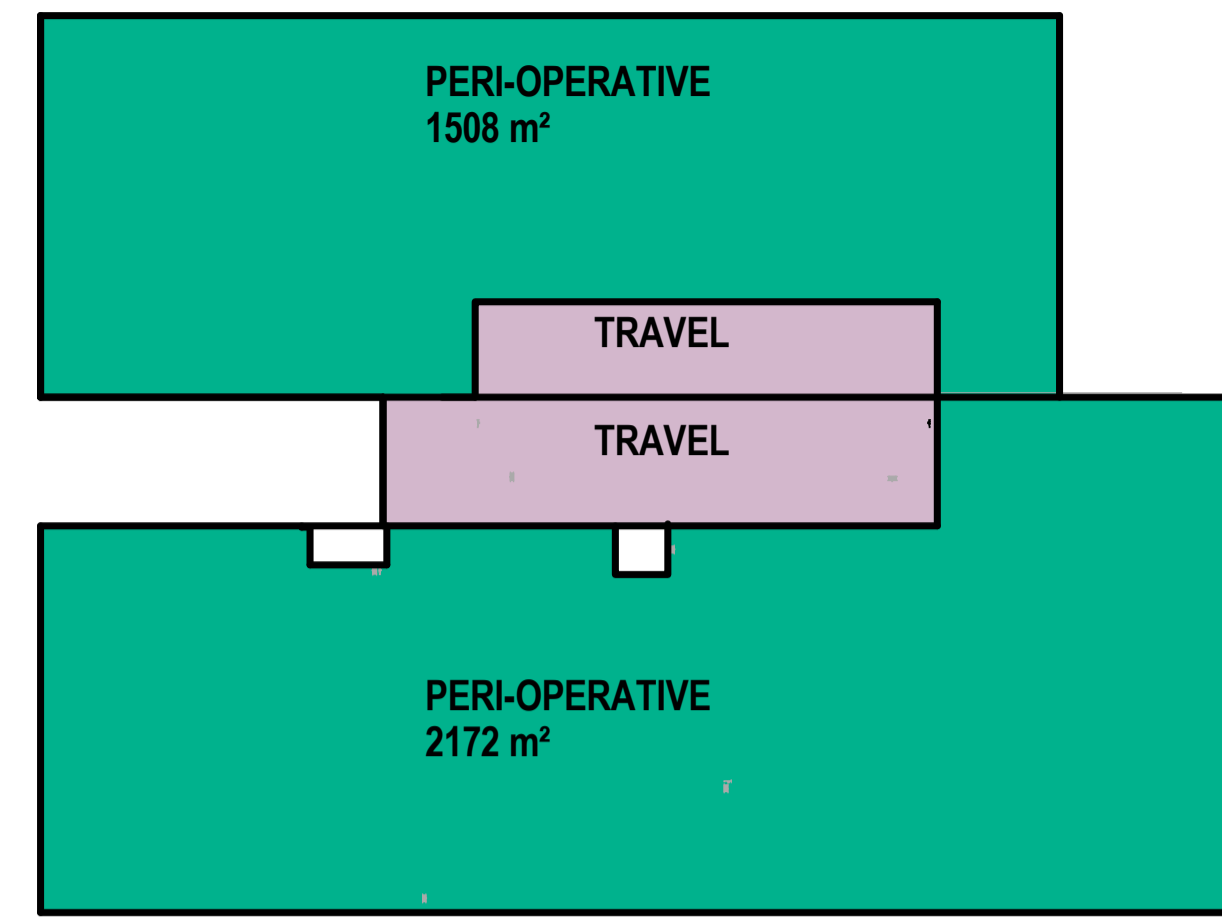


LEVEL 4

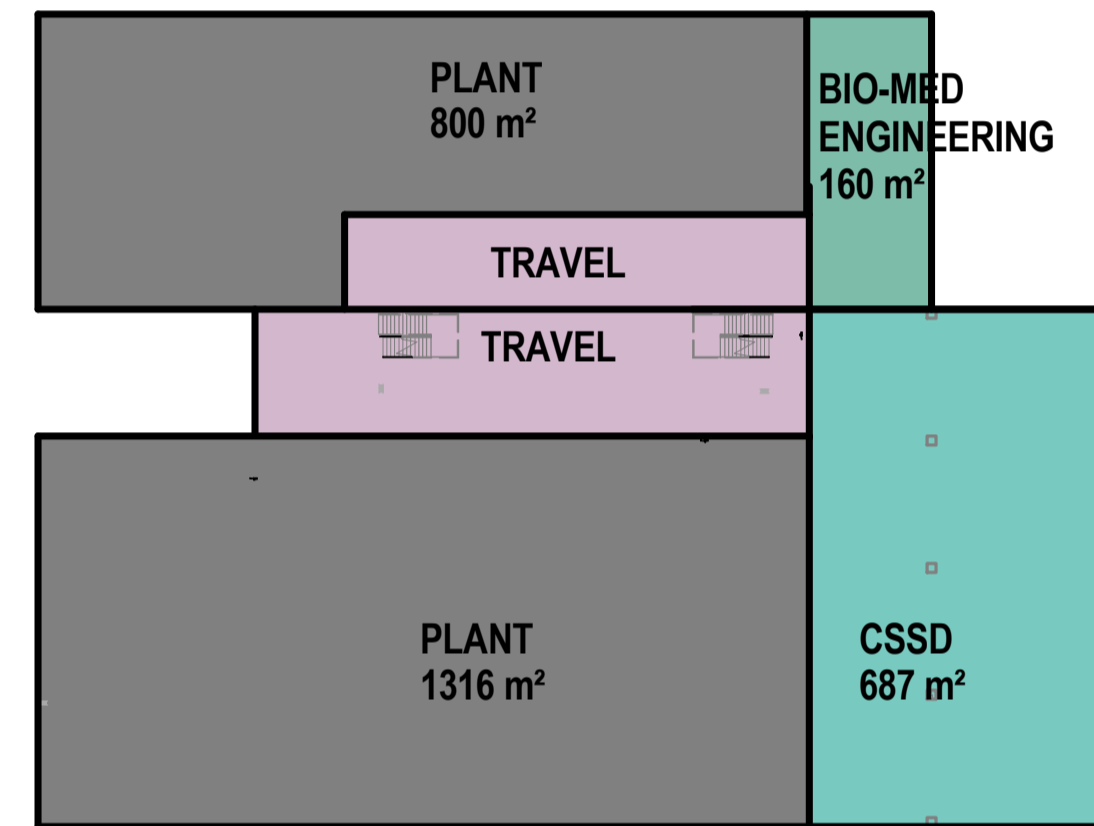


LEVEL 5

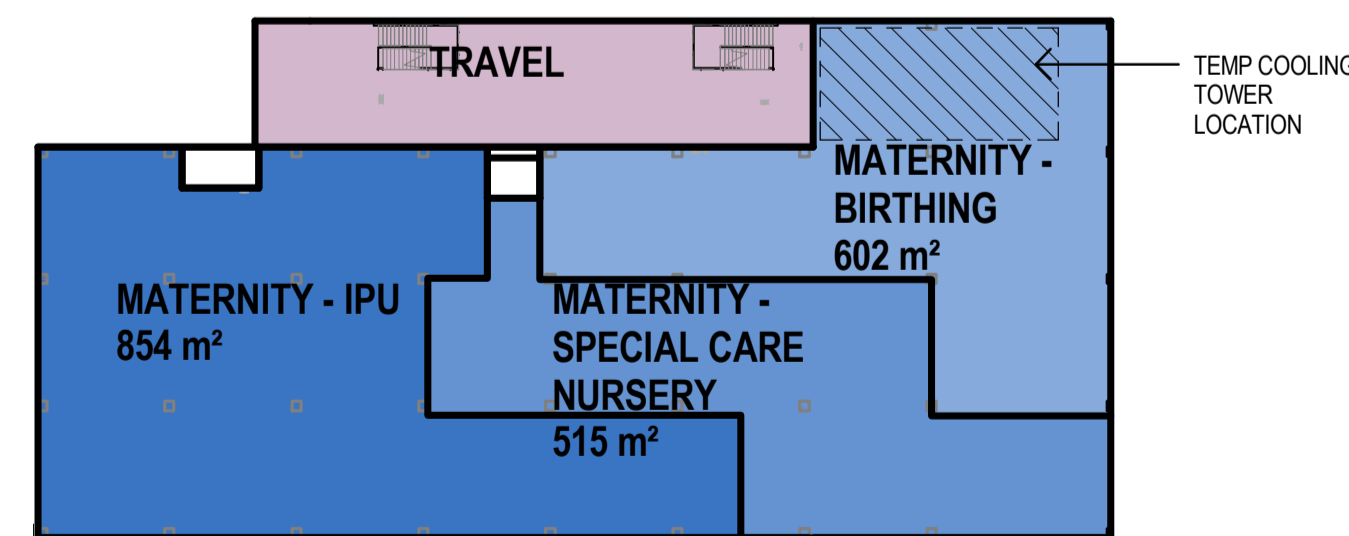
Copyright  
WOODS BAGOT  
Notes:  
CONTRACTOR MUST VERIFY ALL DIMENSIONS  
ON SITE BEFORE COMMENCING WORK OR  
PREPARING WORKSHOP DRAWINGS. DO NOT  
SCALE DRAWING.



LEVEL 6



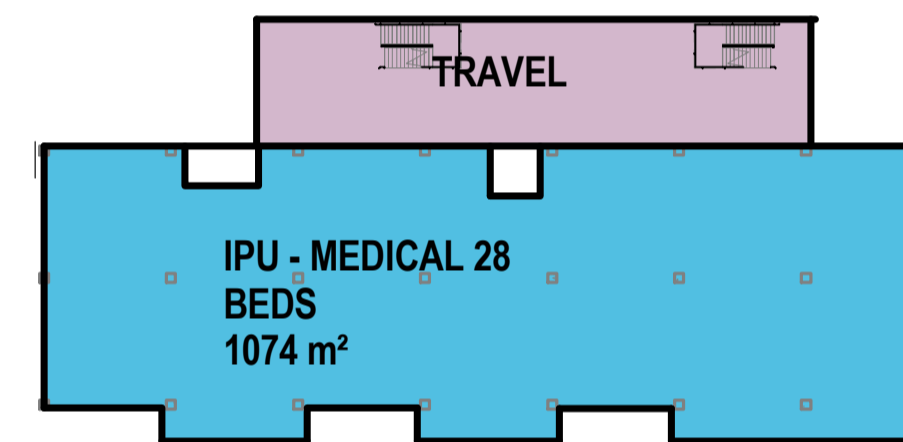
LEVEL 7



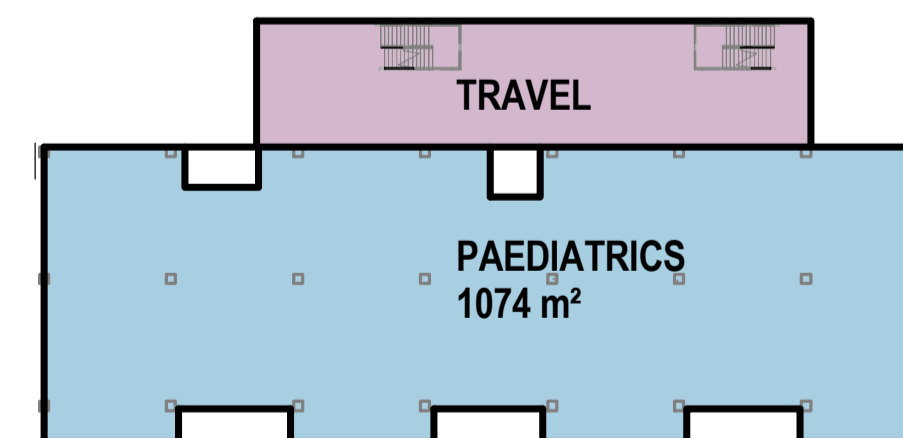
LEVEL 8



LEVEL 9



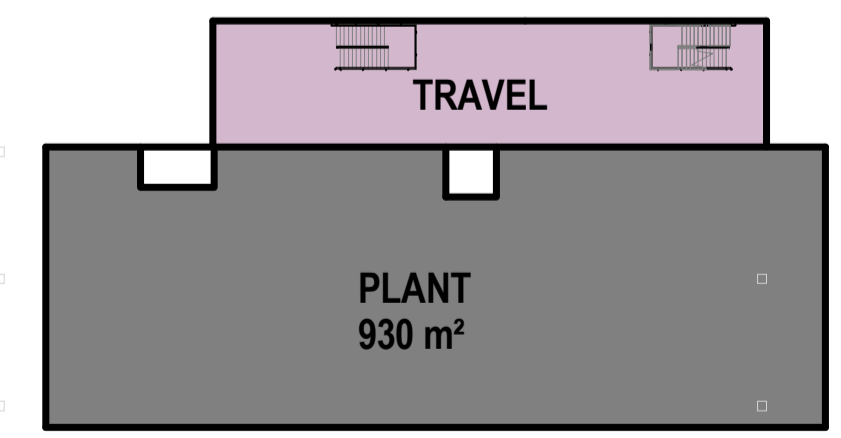
LEVEL 10



LEVEL 11

Area Schedule (Departmental Areas - Opt-3-A) - STAGE 3B2			
Level	Name	Area	Staging
LEVEL 03	PLANT	474 m <sup>2</sup>	Stage 3A
LEVEL 03	TRAVEL	358 m <sup>2</sup>	Stage 3A
Stage 3A: 2		832 m <sup>2</sup>	
LEVEL 03	TRAVEL	440 m <sup>2</sup>	Stage 3B2
LEVEL 03	PLANT	419 m <sup>2</sup>	Stage 3B2
LEVEL 03	LOADING DOCK	653 m <sup>2</sup>	Stage 3B2
Stage 3B2: 3		1511 m <sup>2</sup>	
LEVEL 03: 5		2344 m <sup>2</sup>	
LEVEL 04	RENAL	1080 m <sup>2</sup>	Stage 3A
LEVEL 04	MORTUARY	266 m <sup>2</sup>	Stage 3A
LEVEL 04	ED SUPPORT	353 m <sup>2</sup>	Stage 3A
LEVEL 04	TRAVEL	454 m <sup>2</sup>	Stage 3A
Stage 3A: 4		2152 m <sup>2</sup>	
LEVEL 04	TRAVEL	152 m <sup>2</sup>	Stage 3B2
LEVEL 04	FRONT OF HOUSE	369 m <sup>2</sup>	Stage 3B2
LEVEL 04	PHARMACY - BULK STORE	207 m <sup>2</sup>	Stage 3B2
LEVEL 04	PHARMACY	680 m <sup>2</sup>	Stage 3B2
LEVEL 04	DISASTER ROOM	30 m <sup>2</sup>	Stage 3B2
Stage 3B2: 5		1478 m <sup>2</sup>	
LEVEL 04: 9		3630 m <sup>2</sup>	
LEVEL 05	EMERGENCY	2045 m <sup>2</sup>	Stage 3A
LEVEL 05	TRAVEL	454 m <sup>2</sup>	Stage 3A
Stage 3A: 2		2498 m <sup>2</sup>	
LEVEL 05	IMAGING	1487 m <sup>2</sup>	Stage 3B2
LEVEL 05	TRAVEL	152 m <sup>2</sup>	Stage 3B2
Stage 3B2: 2		1639 m <sup>2</sup>	
LEVEL 05: 4		4178 m <sup>2</sup>	
LEVEL 06	PERI-OPERATIVE	2172 m <sup>2</sup>	Stage 3B1
LEVEL 06	TRAVEL	311 m <sup>2</sup>	Stage 3B1
Stage 3B1: 2		2483 m <sup>2</sup>	
LEVEL 06	PERI-OPERATIVE	1508 m <sup>2</sup>	Stage 3B2
LEVEL 06	TRAVEL	152 m <sup>2</sup>	Stage 3B2
Stage 3B2: 2		1700 m <sup>2</sup>	
LEVEL 06: 4		4183 m <sup>2</sup>	
LEVEL 07	PLANT	1316 m <sup>2</sup>	Stage 3A
LEVEL 07	TRAVEL	307 m <sup>2</sup>	Stage 3A
Stage 3A: 2		1622 m <sup>2</sup>	
LEVEL 07	CSSD	687 m <sup>2</sup>	Stage 3B1
Stage 3B1: 1		687 m <sup>2</sup>	
LEVEL 07	PLANT	800 m <sup>2</sup>	Stage 3B2
LEVEL 07	BIO-MED ENGINEERING	160 m <sup>2</sup>	Stage 3B2
LEVEL 07	TRAVEL	194 m <sup>2</sup>	Stage 3B2
Stage 3B2: 3		1153 m <sup>2</sup>	
LEVEL 07: 6		3462 m <sup>2</sup>	
LEVEL 08	TRAVEL	308 m <sup>2</sup>	Stage 3B1
LEVEL 08	MATERNITY - IPU	854 m <sup>2</sup>	Stage 3B1
LEVEL 08	MATERNITY - SPECIAL CARE NURSERY	515 m <sup>2</sup>	Stage 3B1
LEVEL 08	MATERNITY - BIRTHING	602 m <sup>2</sup>	Stage 3B1
Stage 3B1: 4		2279 m <sup>2</sup>	
LEVEL 08: 4		2279 m <sup>2</sup>	
LEVEL 09	IPU - SURGICAL 28 BED	1072 m <sup>2</sup>	Stage 3B1
LEVEL 09	TRAVEL	307 m <sup>2</sup>	Stage 3B1
Stage 3B1: 2		1379 m <sup>2</sup>	
LEVEL 09: 2		1379 m <sup>2</sup>	
LEVEL 10	IPU - MEDICAL 28 BEDS	1074 m <sup>2</sup>	Stage 3B1
LEVEL 10	TRAVEL	307 m <sup>2</sup>	Stage 3B1
Stage 3B1: 2		1380 m <sup>2</sup>	
LEVEL 10: 2		1380 m <sup>2</sup>	
LEVEL 11	PAEDIATRICS	1074 m <sup>2</sup>	Stage 3B1
LEVEL 11	TRAVEL	307 m <sup>2</sup>	Stage 3B1
LEVEL 11	PLANT	930 m <sup>2</sup>	Stage 3B1
Stage 3B1: 3		1381 m <sup>2</sup>	
LEVEL 11: 3		1381 m <sup>2</sup>	
LEVEL 12	TRAVEL	307 m <sup>2</sup>	Stage 3B1
LEVEL 12	PLANT	930 m <sup>2</sup>	Stage 3B1
Stage 3B1: 2		1236 m <sup>2</sup>	
LEVEL 12: 2		1236 m <sup>2</sup>	
Grand total: 41		25451 m <sup>2</sup>	

LEVEL 12



LEVEL 12

Client  
**NSW** GOVERNMENT | **Health** Infrastructure  
Project  
**LISMORE BASE HOSPITAL REDEVELOPMENT**  
60 Urabla Street Lismore NSW 2480

Drawing title  
STAGE 3B SUMMARY AREAS

Checked  
AJ

Approved  
CH

Scale  
1 : 500  
@ A1 sheet size

**WOODS BAGOT** AUSTRALIA ASIA MIDDLE EAST EUROPE NORTH AMERICA

Project number  
120179

Drawing number  
DA9001

Status  
FOR APPROVAL

Revision  
C

Rev	Description	Date	App'd
C	ISSUE FOR INFORMATION	7/11/14	AJ
B	PRELIMINARY	21/05/14	AJ
A	PRELIMINARY	13/05/14	AJ

Rev	Description	Date	App'd
C	ISSUE FOR INFORMATION	7/11/14	AJ
B	PRELIMINARY	21/05/14	AJ
A	PRELIMINARY	13/05/14	AJ