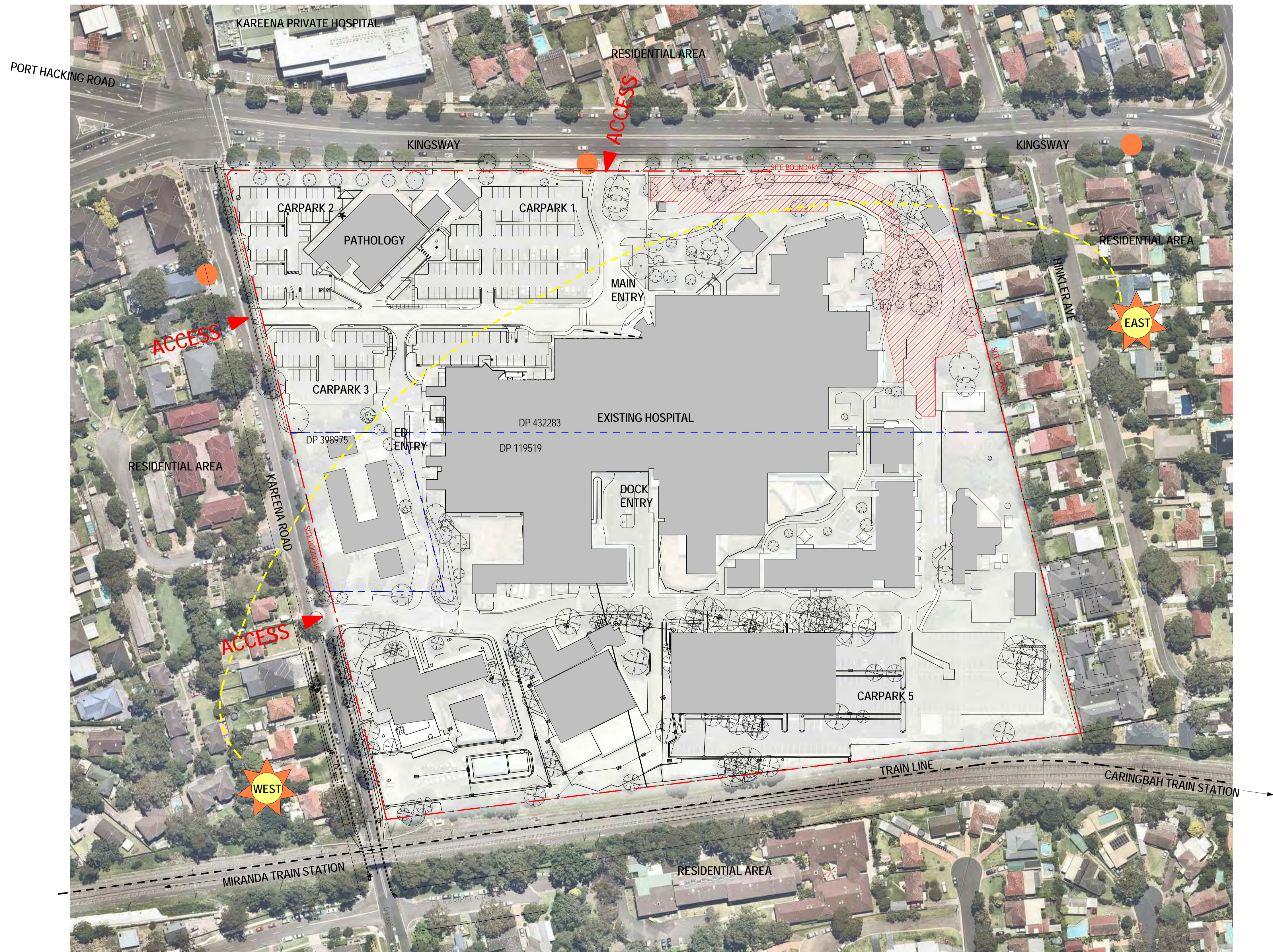


01.05 ARCHITECTURAL DRAWINGS

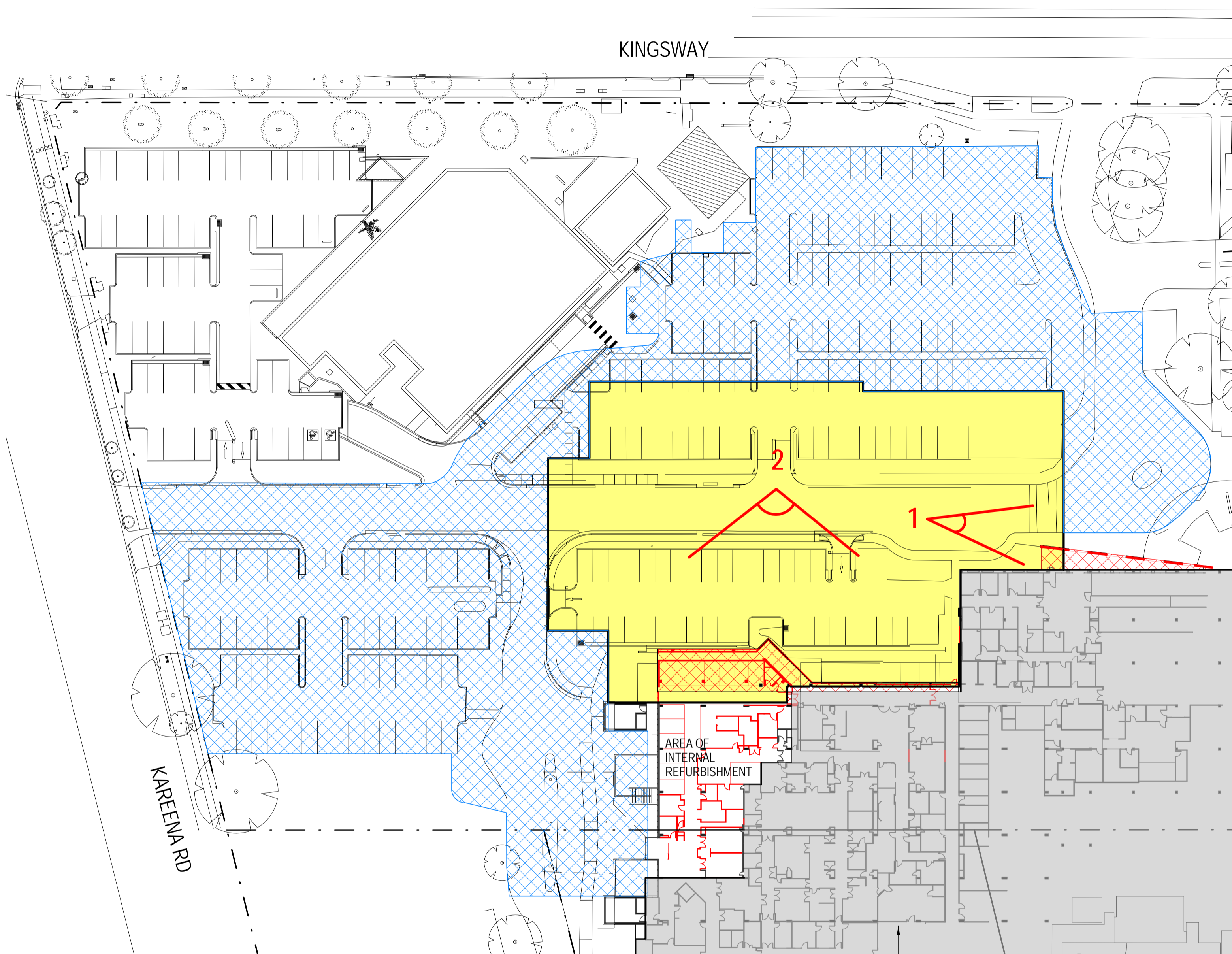




- EXISTING BUILDING
- MAIN ROADS
- SECONDARY ROADS
- ▨ CARPARK/EARLY WORKS - part of a separate approval under Part 5 of the EP&A Act
- BUS STOPS
- ▶ ACCESS POINTS
- ★ SUN PATH
- - - LOT BOUNDARY



- EXISTING BUILDING
- MAIN ROADS
- SECONDARY ROADS
- CARPARK/EARLY WORKS - part of a separate approval under Part 5 of the EP&A Act
- BUS STOPS
- ACCESS POINTS
- LOT BOUNDARY
- NEW BUILDING FOOTPRINT
- MAIN WORKS
- SUN PATH
- TREE REMOVED AS PART OF MAIN WORKS



1 DEMOLITION PLAN  
1:500

- PROPOSED NEW BUILDING
- MAIN WORKS
- EXISTING BUILDING DEMOLITION AREA

EXISTING BUILDING DEMOLITION AREA SCOPE :  
 L02 - FACADE AND PARTIAL INTERNAL WALLS  
 L03 - FACADE AND PARTIAL INTERNAL WALLS  
 L04 - PLANT



1 - ENTRY

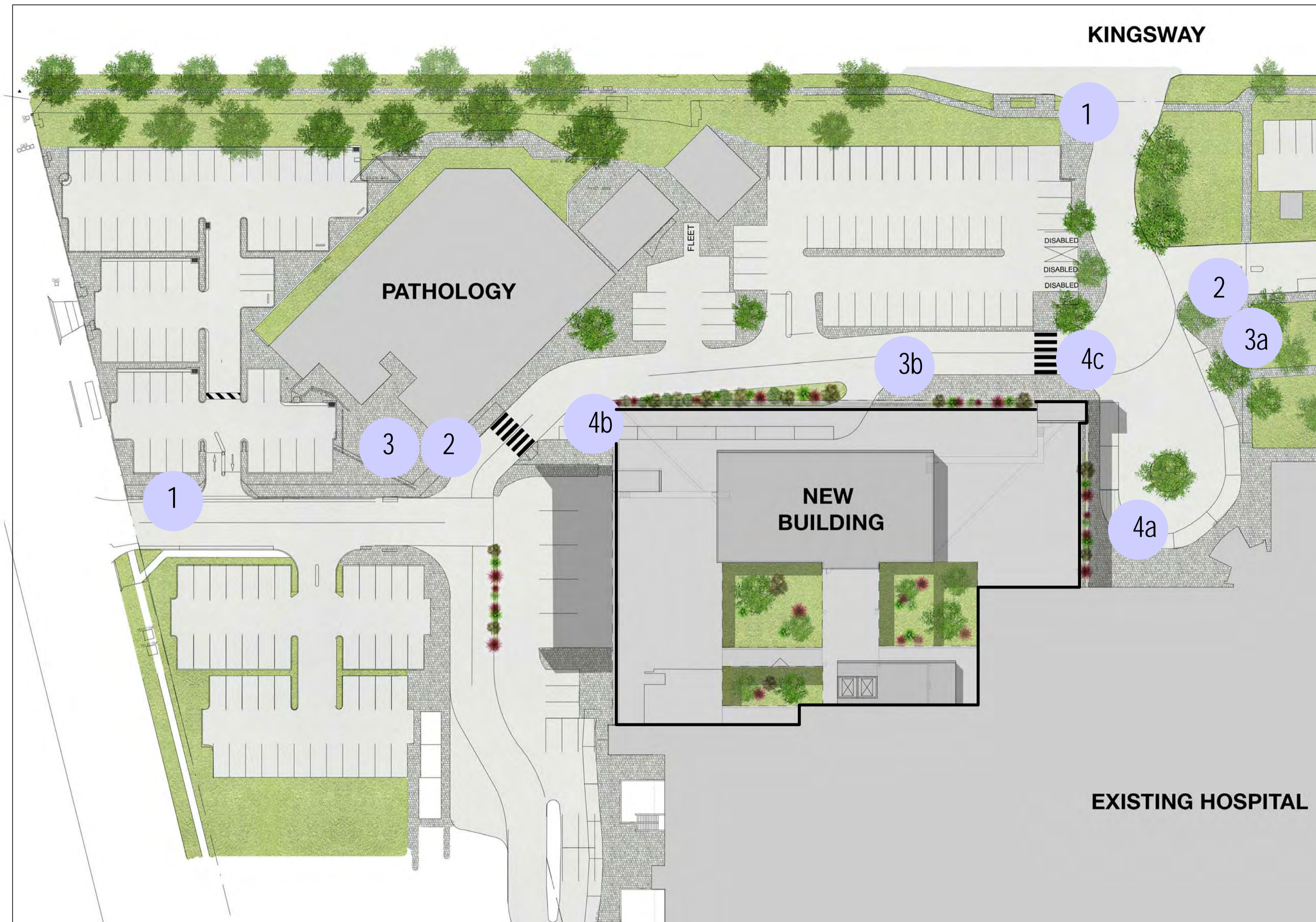
FEATURE CANOPY AND FEATURE YELLOW WALL DEMOLISHED



2 - NORTH FACADE

PARTIAL DEMOLITION OF FACADE  
PLANT CUT BACK

FULL FACADE DEMOLISHED



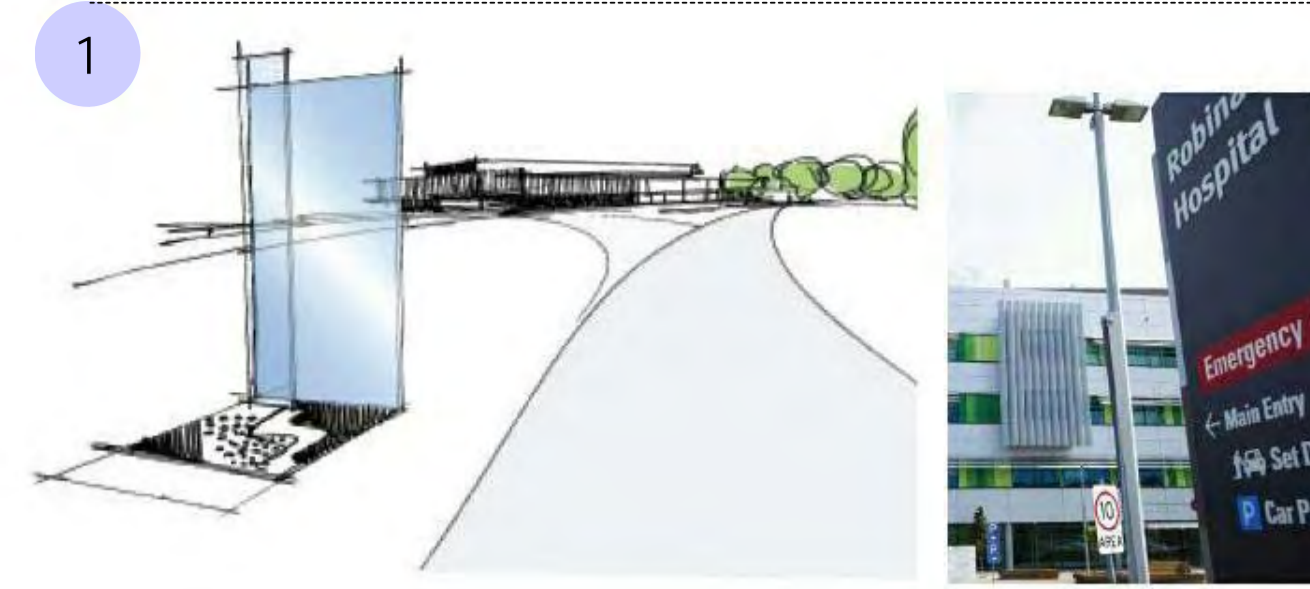
**SIGNAGE PLAN**

1:500

**SIGNAGE PLAN**

Wayfinding and clarity of access are key elements of the site strategy for any health campus and is a key aid to the flow of staff, public and goods. Our approach in the initial outline for signage is to provide a legible but unimposing strategy.

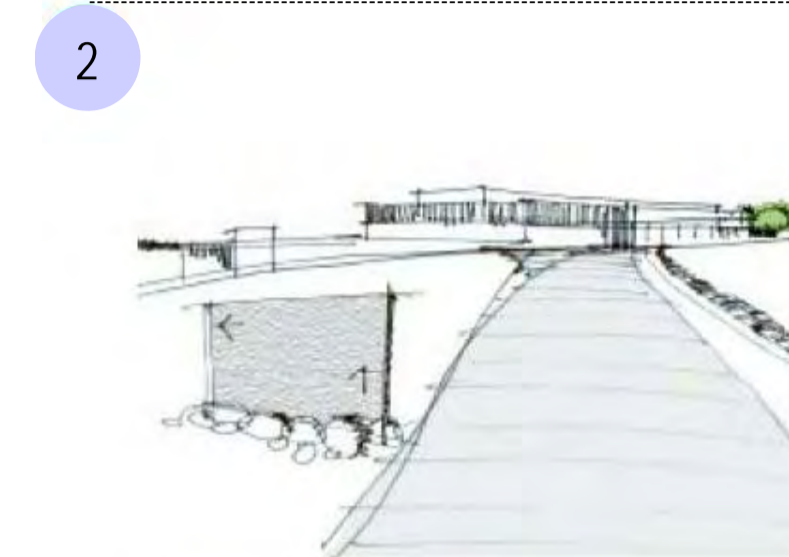
The enclosed proposal for signage is current given the status of the project and consultation with the Hospital. The general location, scale and materiality will form the design strategy to be developed with the Contractor. The attached forms the basis of the final design but still needs to be confirmed in discussion with the Hospital. With a design and Construct Procurement Strategy in place for the project, final specification and shop drawing process of the signage and wayfinding elements will not be undertaken until the Main Works Contractor is in Place.



**Site Entry signage:**

To direct vehicle and pedestrians from the Kingsway and Kareena road into hospital entry roads.

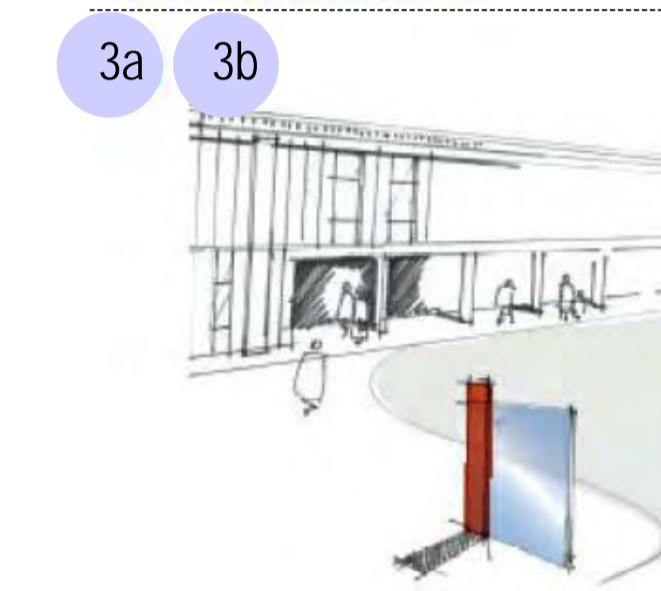
**Outline Form:** Approximately 3m high 1.2m side, floded aluminium panels. 'KAREENA/ KINGSWAY ROAD ENTRY' internally illuminated lettering approximately 115mm high. All other lettering in Acrylic.



**Direction Vehicle Signage:**

To Emergency - Public drop off and Ambulance entries

**Outline Form:** Approximately 2.5m high, floded aluminium panels. White reflective vinyl lettering. No illumination.

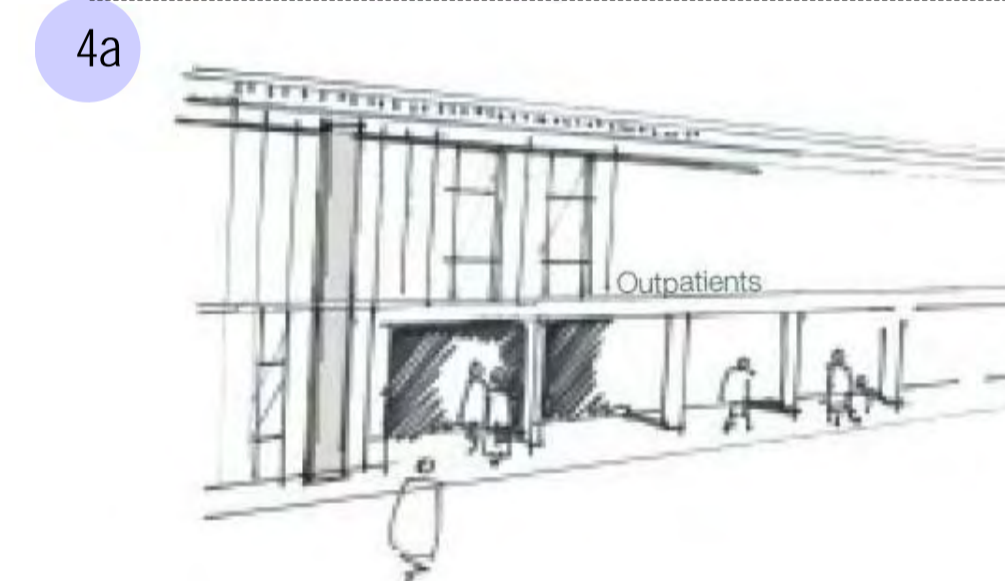


**Direction Pedestrian Signage:**

Emergency & Main Entry: Public drop off

**Outline Form 3a:** Approximately 2m high, floded aluminium panels. White reflective vinyl lettering. No illumination.

**Outline Form 3b:** Approximately 1m high, floded aluminium panels. White reflective vinyl lettering. No illumination.



**Building Signage:**

Outpatients Signage for existing departmental area.

**Outline Form:** 3D Fabricated Aluminium Letters pin fixed to new canopy. White Finish. No illumination.



**Building Signage:**

Emergency Department Main Sign

**Outline Form:** 3D Fabricated Aluminium Letters pin fixed to new canopy. White Finish. No illumination



**Building Signage:**

Hospital Logo to off form concrete wall.

**Outline Form:** 3D Fabricated Stainless Steel Letters pin fixed to new canopy. No illumination.