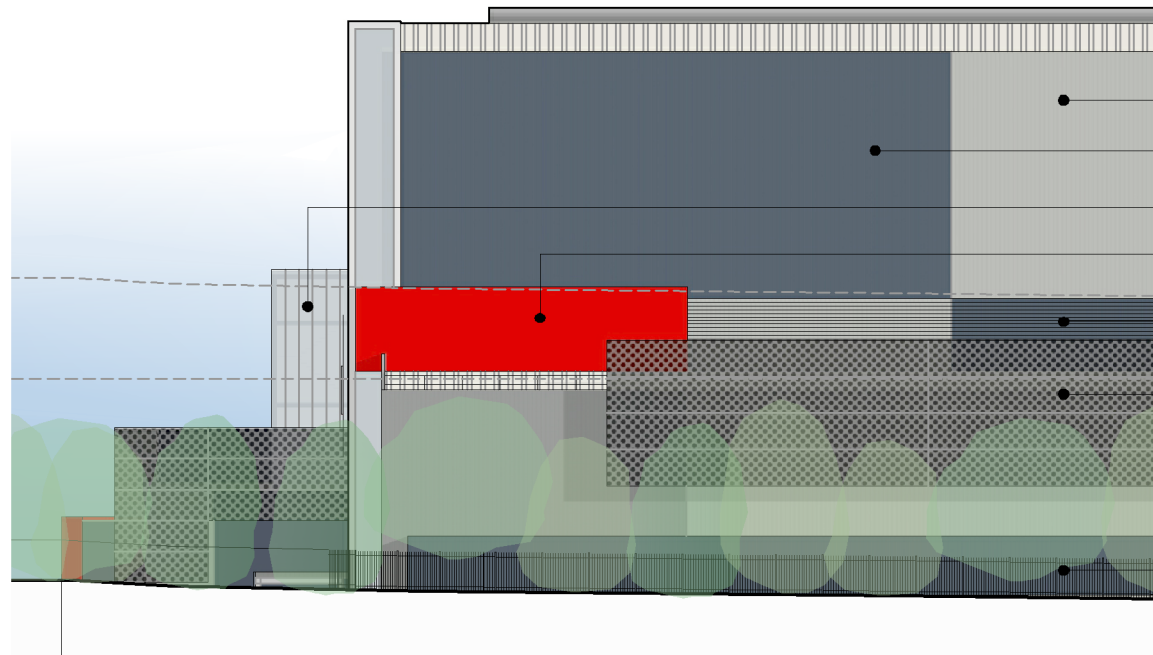
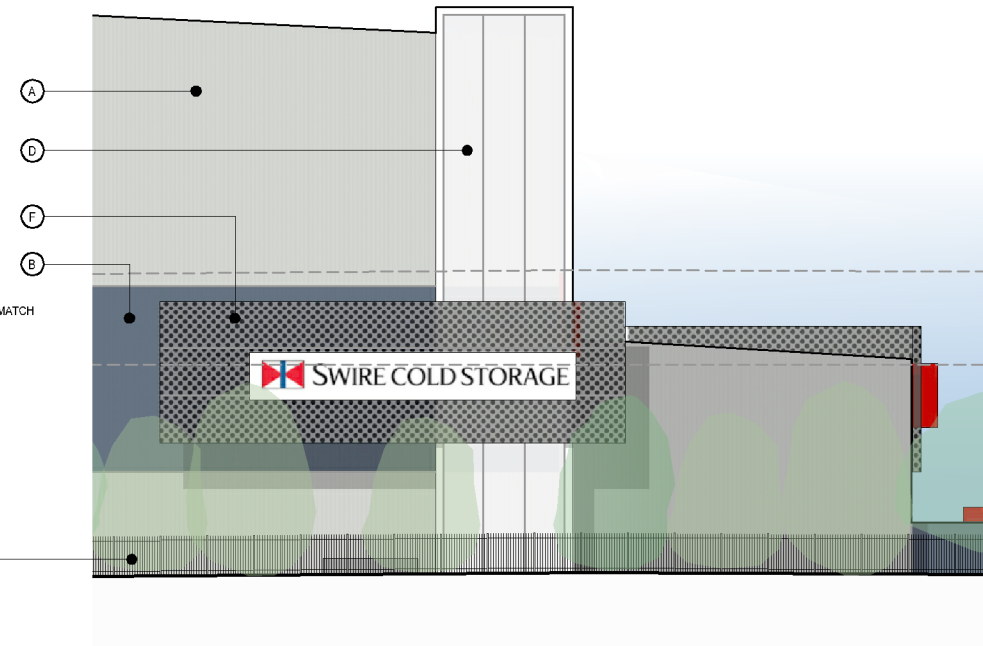


MATERIAL SELECTIONS

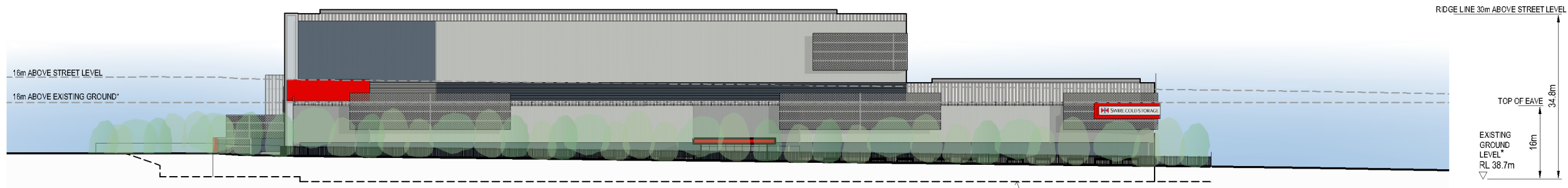
- (A) TRIMDEK COLORBOND 'SHALE GREY'
- (B) TRIMDEK COLORBOND 'DEEP OCEAN'
- (C) PAINTED CONCRETE TO MATCH COLORBOND 'DEEP OCEAN'
- (D) TRANSLUCENT MULTICELL POLY CARBONATE SHEET CLADDING (DAMPALON OR SIMILAR)
- (E) ALUMINUM COMPOSITE PANEL CLADDING (ALUCOBOND OR SIMILAR) - COLOUR 'RED'
- (F) PERFORATED ALUMINIUM SCREEN PANELS



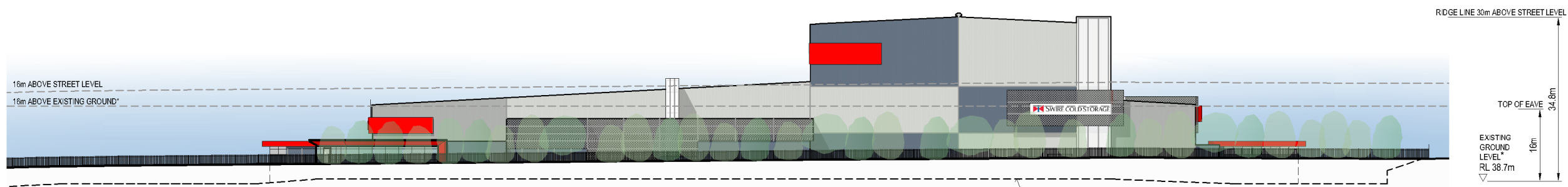
1 PART SOUTH DETAILED ELEVATION
HOLLINSWORTH ROAD 1:200



2 PART WEST DETAILED ELEVATION
ROAD No.2 1:200



3 SOUTH ELEVATION
HOLLINSWORTH ROAD 1:500



4 WEST ELEVATION
ROAD No.2 1:500

NOTES
* EXISTING GROUND LEVEL AT CENTRE OF BUILDING

PRELIMINARY
NOT FOR CONSTRUCTION

No.	Revision	By	CHK	Appd	Date
A	FOR RESPONSE TO EIS SUBMISSIONS	TNC	PJS	PJS	16.11.15



Original Scale (A1)	Design	PJS	13.05.15
1:500	Drawn	TNC	11.11.15
Redlined Scale (A3)	Diag Verifier		
1:1000	Draw Check		

Client	SWIRE COLD STORAGE PTY LTD
Project	MARSDEN PARK

Title	STREETSCAPE ELEVATIONS OVERALL DEVELOPMENT
Discipline	GENERAL
Drawing No.	2520460-96-0-502S
Rev.	A