

LOCATION PLAN  
1:2000

DRAWING LIST		
DRAWING NO.	REV	DRAWING TITLE
2520460-96-0-500	B	LOCATION PLAN
2520460-96-0-501	B	OVERALL DEVELOPMENT - GENERAL ARRANGEMENT PLAN
2520460-96-0-502	B	OVERALL DEVELOPMENT - ELEVATIONS
2520460-96-0-503	B	OVERALL DEVELOPMENT - SECTIONS
2520460-96-0-504	A	OVERALL DEVELOPMENT - ADMINISTRATION OFFICE LAYOUTS
2520460-96-0-505	A	OVERALL DEVELOPMENT - OFFICE / AMENITIES LAYOUTS
2520460-96-0-506	B	OVERALL DEVELOPMENT - NW PERSPECTIVE
2520460-96-0-507	B	OVERALL DEVELOPMENT - SE PERSPECTIVE
2520460-96-0-508	B	OVERALL DEVELOPMENT - PHOTOMONTAGE
2520460-96-0-509	B	OVERALL DEVELOPMENT - REFRIGERATION LAYOUT
2520460-96-0-511	B	STAGE 1 - GENERAL ARRANGEMENT PLAN
2520460-96-0-512	B	STAGE 1 - ELEVATIONS
2520460-96-0-513	B	STAGE 1 - SECTIONS

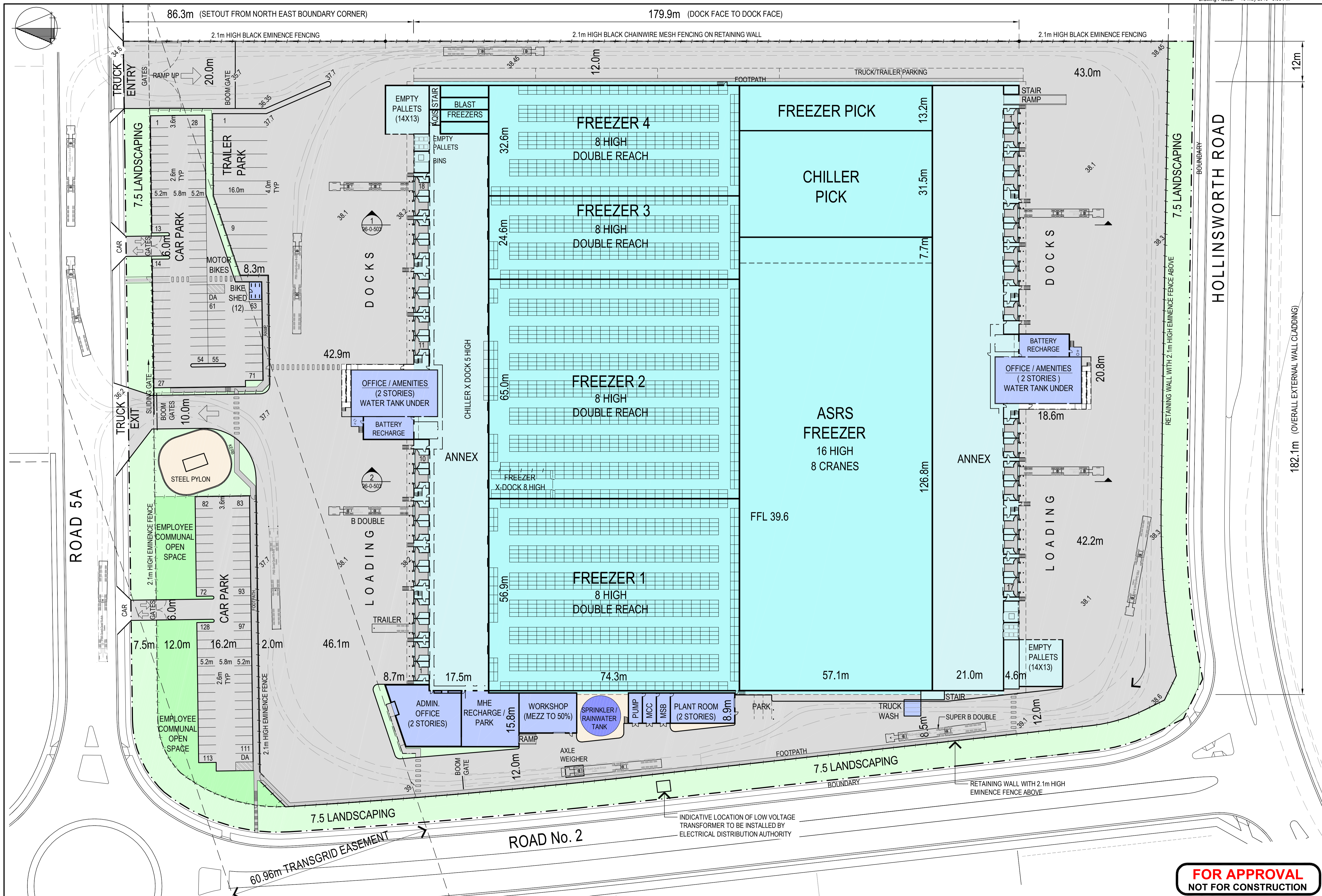
DEVELOPMENT SUMMARY	
TOTAL SITE AREA	70,320 sq.m.
EASEMENT AREA	10,675 sq.m.
LANDSCAPED AREA	5,612 sq.m.
EMPLOYEE COMMUNAL AREA	1,085 sq.m.
GROSS BUILDING AREAS	
FREEZERS	24,189 sq.m.
ANNEXES AND DOCKS	8,199 sq.m.
EMPTY PALLETS	378 sq.m.
SERVICES AREAS (PLANT, RECHARGE ETC)	1,369 sq.m.
OFFICE / AMENITIES (2 x 2 LEVELS)	1,468 sq.m.
ADMINISTRATION OFFICE (2 x 2 LEVELS)	684 sq.m.
TOTAL BUILDING AREA	36,287 sq.m.
FLOOR SPACE RATIO	51.6%
36,287 sq.m. ÷ 70,320 sq.m.	
HEAVY DUTY PAVEMENT	24,473 sq.m.
CAR PARK PAVEMENT	3,745 sq.m.
CAR PARK SPACES	128 (INCL. 2 DISABILITY)
RAINWATER STORAGE	1500kL



# SWIRE COLD STORAGE PTY LTD MARSDEN PARK PROJECT LOT 124, DP 1194052 (UNREGISTERED)

## PLANNING DRAWINGS for EIS SUBMISSION

Prepared by Beca Pty Ltd  
Reference 2520460-960



**FOR APPROVAL**  
NOT FOR CONSTRUCTION

B	REISSUED FOR EIS APPLICATION	GW	PJS	13.5.15
A	ISSUED FOR EIS APPLICATION	GW	PJS	08.5.15
No.	Revision	By	Chk	Appd

Drawing Originator:

Original Scale (A1)	Design	PJS	08.5.15	Approved For Construction*
1:500	Drawn	GW	08.5.15	Date
Reduce Scale (A3)	Design Check			
1:1000				

\* Refer to Revision 1 for Original Signature

Client: SWIRE COLD STORAGE PTY LTD

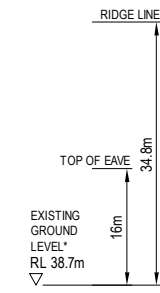
Project: MARSDEN PARK

Title: GENERAL ARRANGEMENT PLAN OVERALL DEVELOPMENT

Discipline	PLANNING
Drawing No.	2520460-96-0-501
Rev.	B



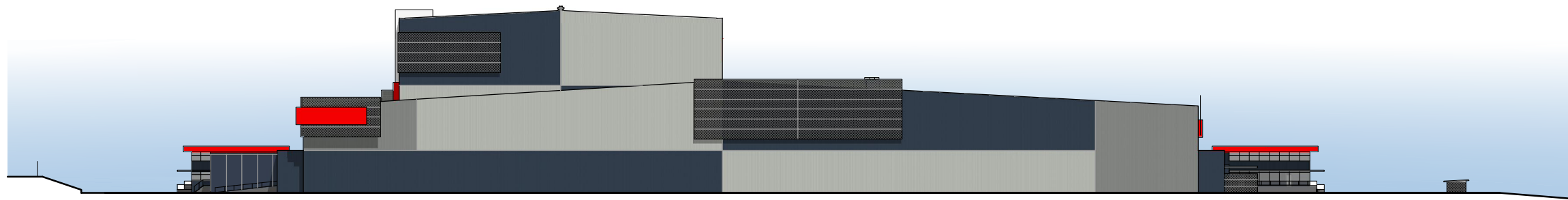
1 NORTH ELEVATION  
1:500



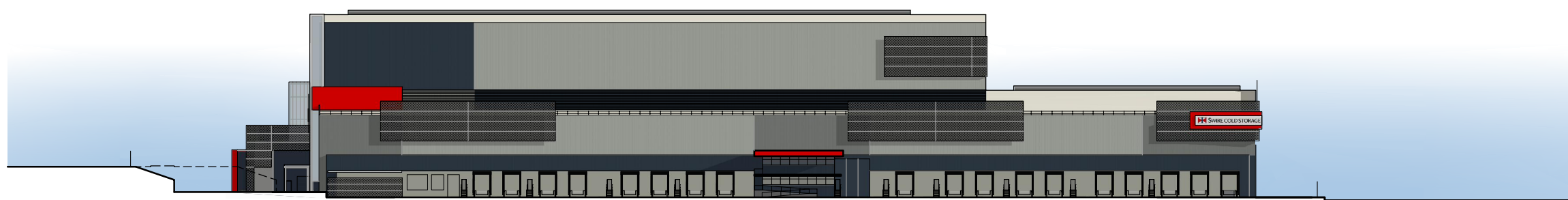
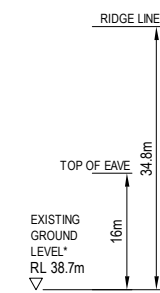
ANODISED ALUMINIUM CURTAIN WALL SYSTEM WITH TINTED AND OPAQUE SPANDRAL GLASS PANELS

- MATERIAL SELECTIONS**
- TRIMDEK COLORBOND "SHALE GREY"
  - TRIMDEK COLORBOND "DEEP OCEAN"
  - PAINTED CONCRETE TO MATCH COLORBOND "DEEP OCEAN"
  - TRANSLUCENT MULTICELL POLYCARBONATE SHEET CLADDING (DAMPALON OR SIMILAR)
  - ALUMINIUM COMPOSITE PANEL CLADDING (ALUCOBOND OR SIMILAR) - COLOUR "RED"
  - PERFORATED ALUMINIUM SCREEN PANELS

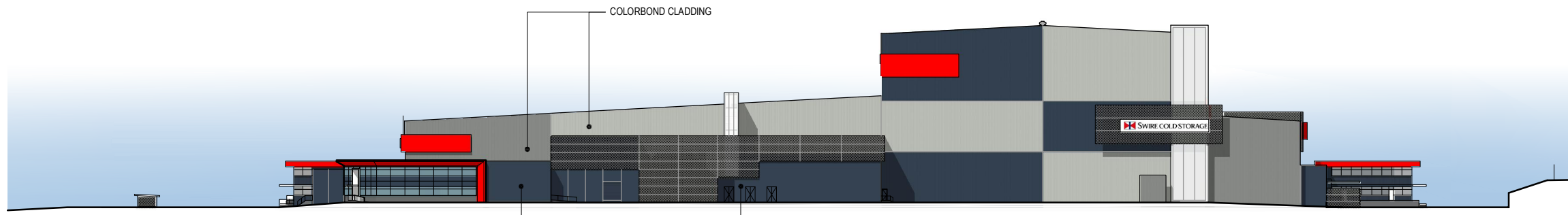
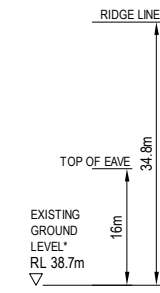
**NOTES**  
\* EXISTING GROUND LEVEL AT CENTRE OF BUILDING



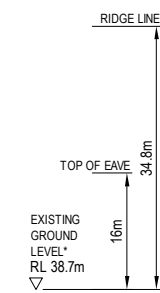
2 EAST ELEVATION  
1:500



3 SOUTH ELEVATION  
1:500



4 WEST ELEVATION  
1:500



**PRELIMINARY**  
**NOT FOR CONSTRUCTION**

No.	Revision	By	Chk	Appd	Date
B	RE-ISSUED FOR EIS APPLICATION	SC	TNC	PJS	20.7.15
A	ISSUED FOR EIS APPLICATION	SC	TNC	PJS	13.05.15

Drawing Originator:  
**Beca**

Original Scale (A1)	Design	PJS	13.05.15	Approved For Construction*
1:500	Drawn	SC	13.05.15	Date
Reduced Scale (A3)	Design Verifier			
1:1000	Design Check			

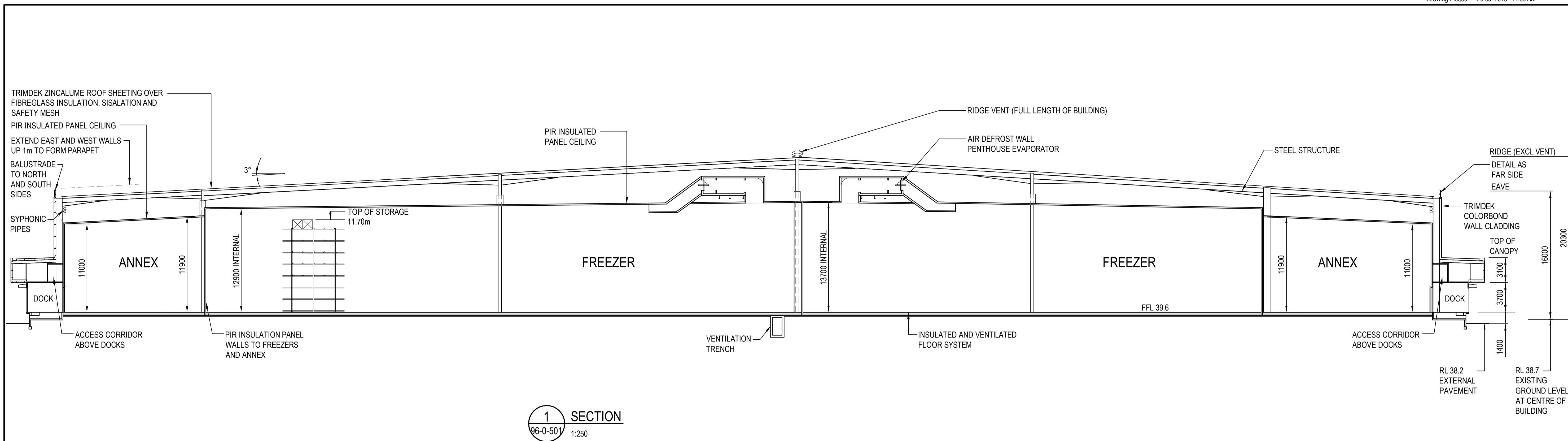
\* Refer to Revision 1 for Original Signature

Client: SWIRE COLD STORAGE PTY LTD

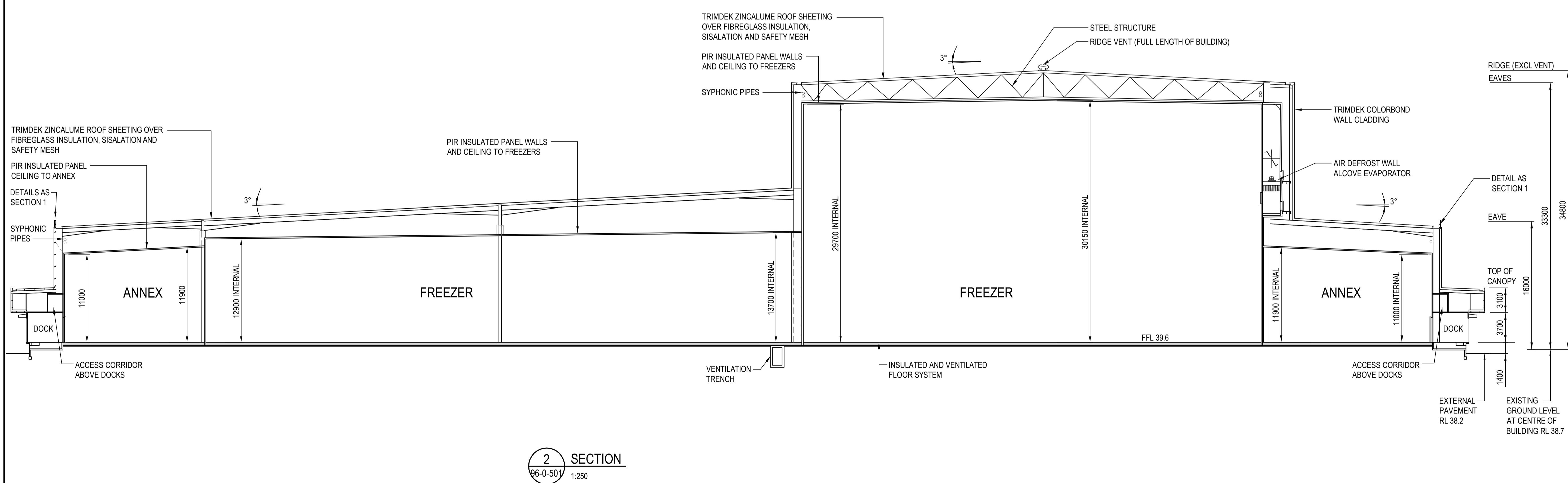
Project: MARSDEN PARK

Title: ELEVATIONS OVERALL DEVELOPMENT

Discipline	GENERAL
Drawing No.	2520460-96-0-502
Rev.	B



**1 SECTION**  
96-0-501 1:250



**2 SECTION**  
96-0-501 1:250

No.	Revision	By	Chk	Appd	Date
B	ISSUED FOR EIS APPLICATION	GW	PJS		20.7.15
A	ISSUED FOR EIS APPLICATION	GW	PJS		13.5.15



Original Scale (A1)	1:250	Design	PJS	08.5.15	Approved For Construction*
Drawn	GW	08.5.15			
Reduced Scale (A3)	1:500	Dsg Verifier			Date
		Dwg Check			

\* Refer to Revision 1 for Original Signature

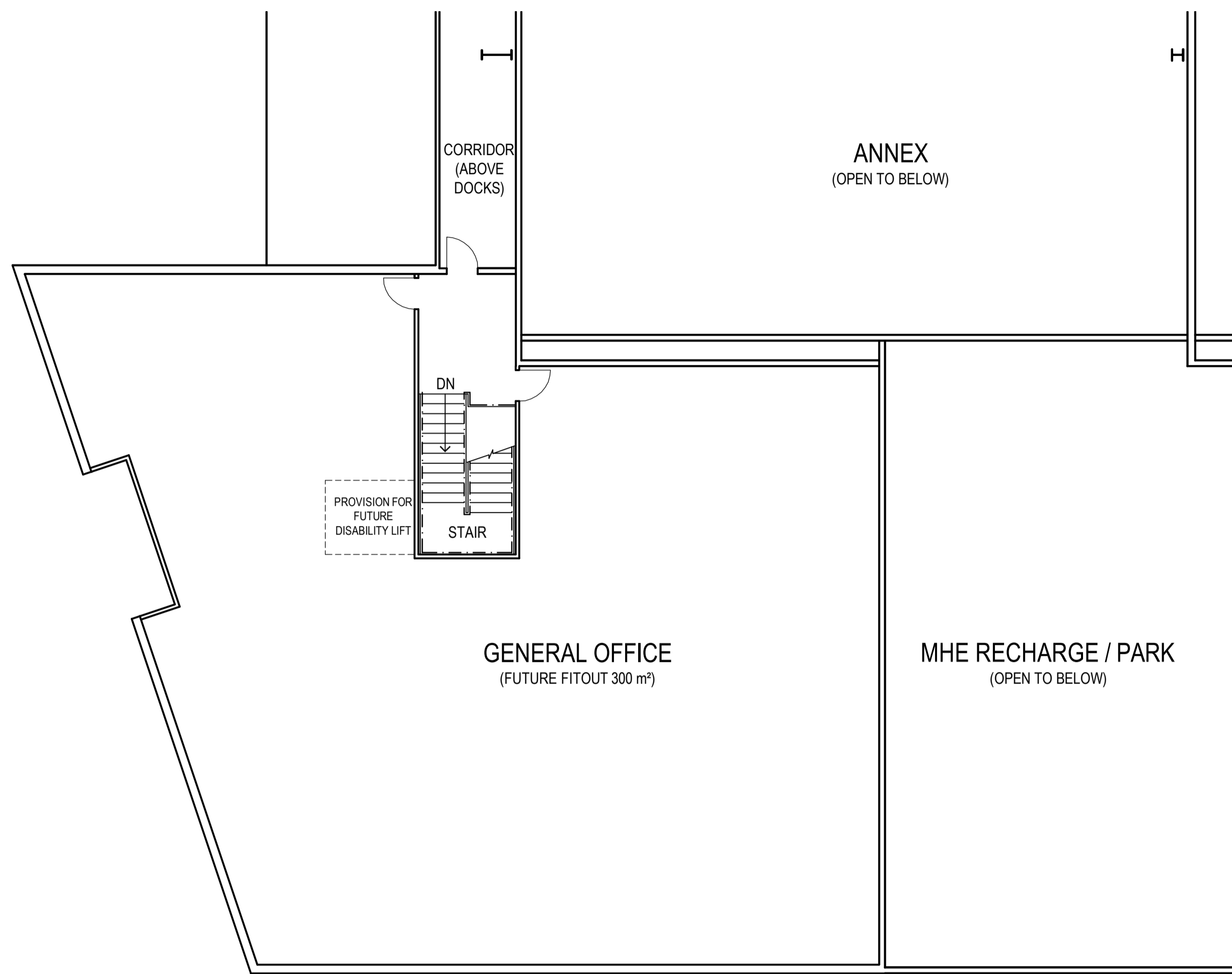
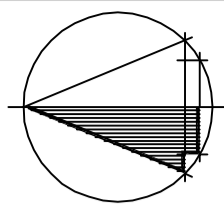
Client: SWIRE COLD STORAGE PTY LTD

Project: MARSDEN PARK

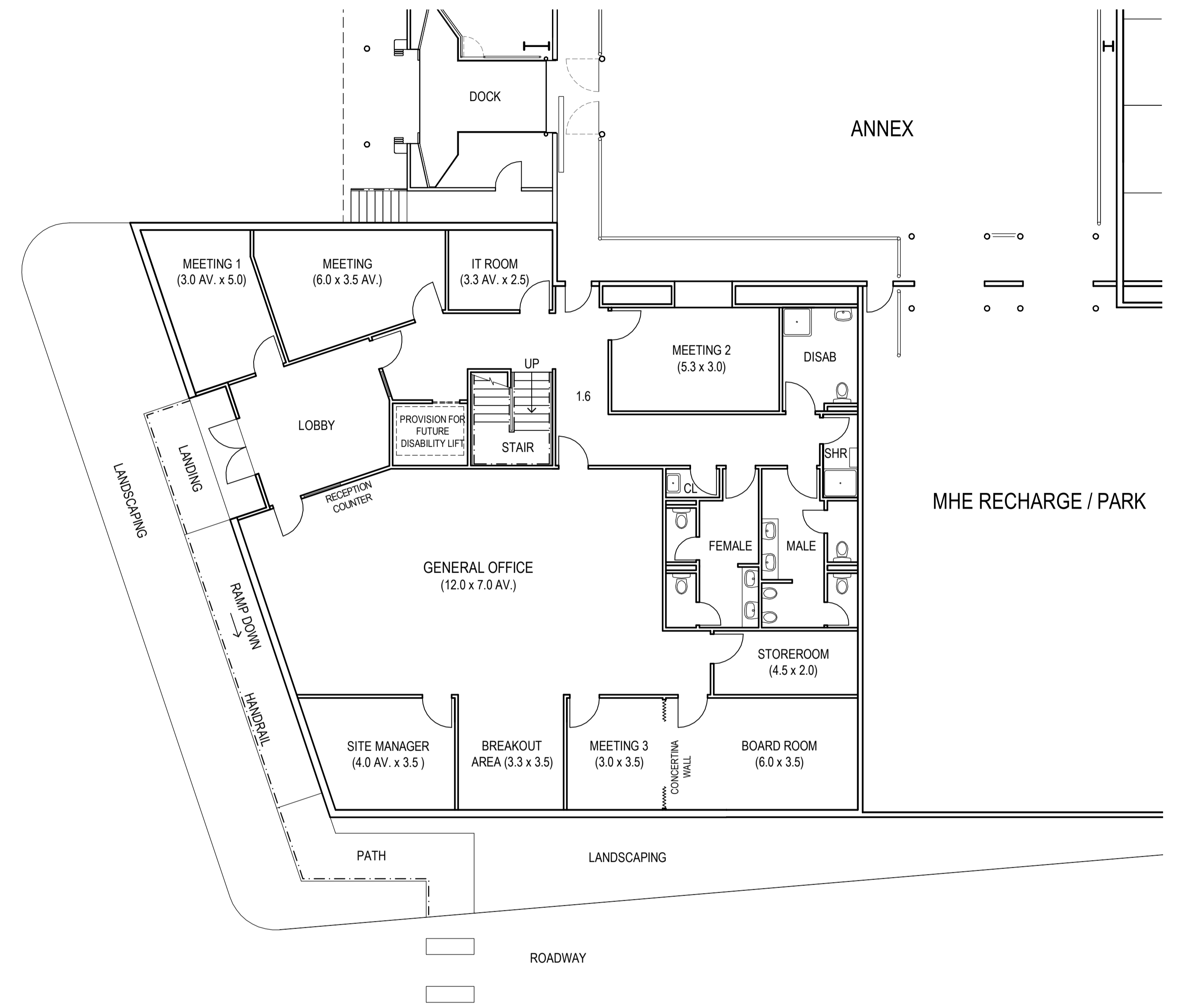
Title: SECTIONS OVERALL DEVELOPMENT

Discipline	PLANNING
Drawing No.	2520460-96-0-503
Rev.	B

**FOR APPROVAL**  
**NOT FOR CONSTRUCTION**



**FIRST FLOOR LEVEL**  
1:100



**GROUND FLOOR LEVEL**  
1:100

No.	Revision	By	Chk	Appd	Date
A	ISSUED FOR EIS APPLICATION	GW	PJS		14.5.15



Original Scale (A1)	Design	PJS	08.5.15
1:100	Drawn	GW	08.5.15
Reduced Scale (A3)	Design Verifier		
1:200	Design Check		

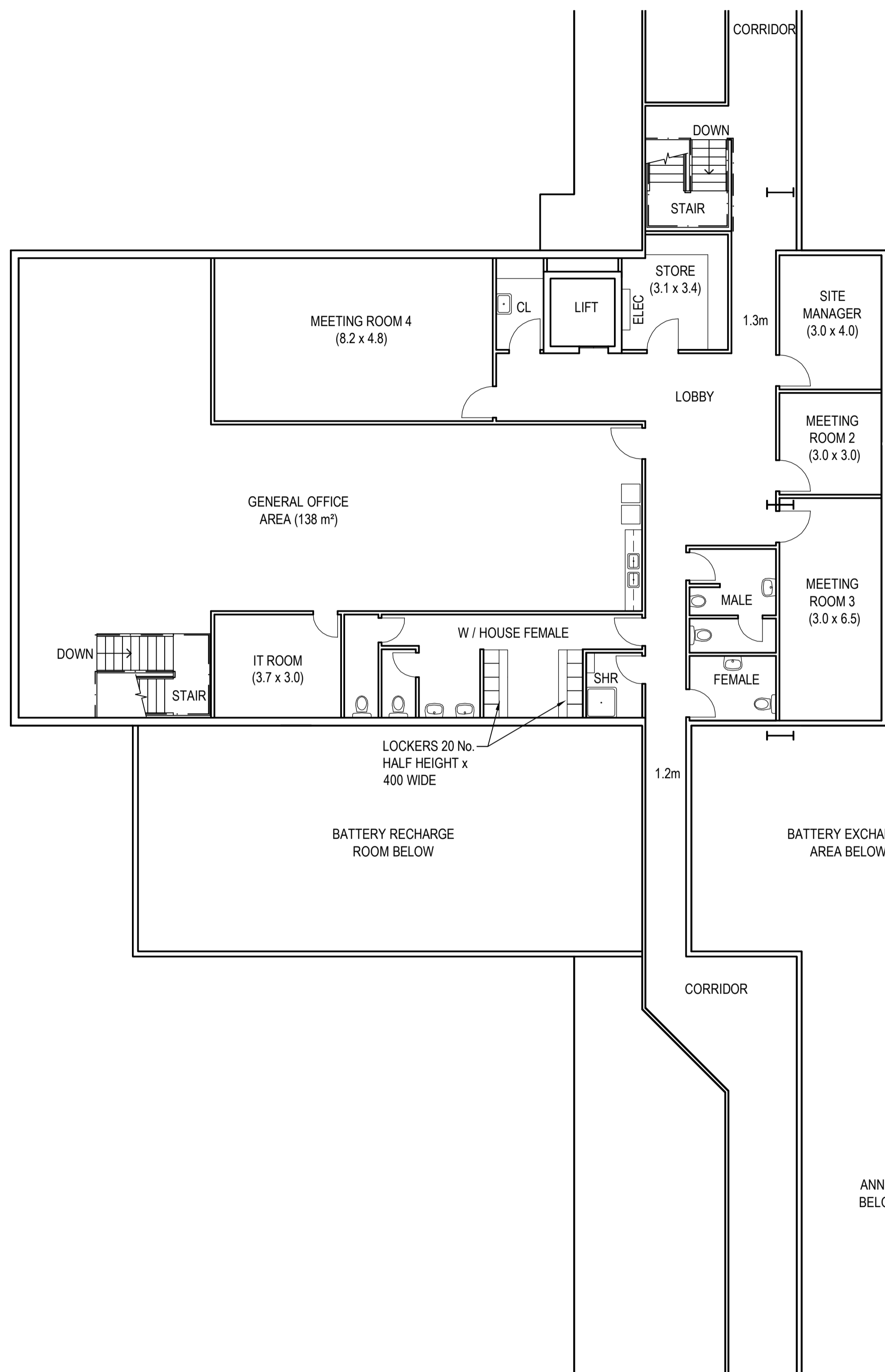
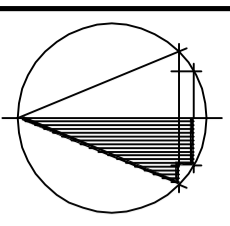
Client: **SWIRE COLD STORAGE PTY LTD**

Project: **MARSDEN PARK**

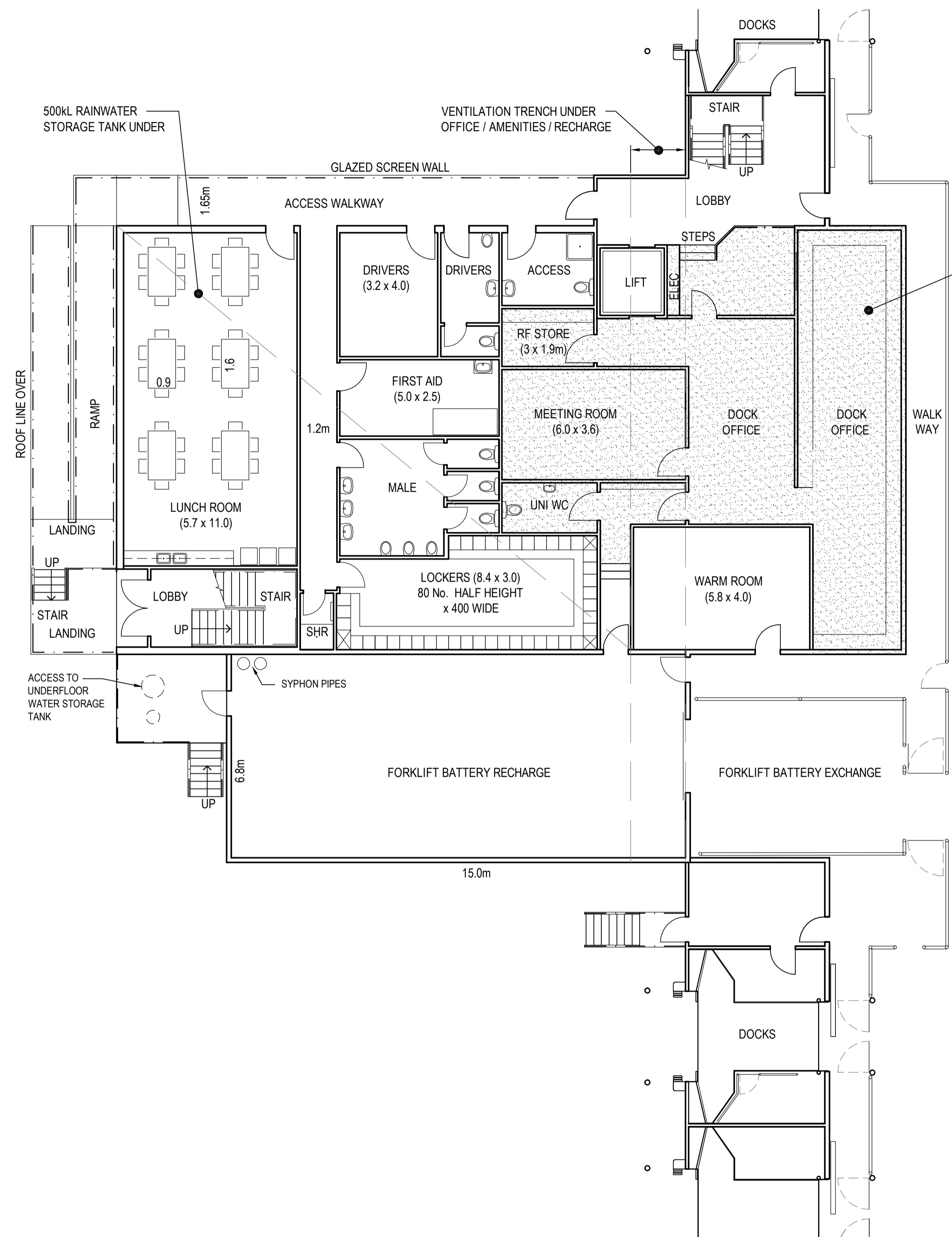
Title: **ADMINISTRATION OFFICE LAYOUTS OVERALL DEVELOPMENT**

Discipline	PLANNING
Drawing No.	2520460-96-0-504
Rev.	A

**FOR APPROVAL**  
**NOT FOR CONSTRUCTION**



FIRST FLOOR LEVEL  
1:100



GROUND FLOOR LEVEL  
1:100

**NOTE**  
NORTH BUILDING AS DRAWN  
SOUTH BUILDING ROTATED 180°

No.	Revision	By	Chk	Appd	Date
A	ISSUED FOR EIS APPLICATION	GW	PJS		14.5.15



Original Scale (A1)	Design	PJS	11.05.15
1:100	Drawn	GW	11.05.15
Reduced Scale (A3)	Design Verifier		
1:200	Design Check		

Client: SWIRE COLD STORAGE PTY LTD  
Project: MARSDEN PARK

Title: OFFICE / AMENITIES LAYOUTS  
OVERALL DEVELOPMENT

Discipline	PLANNING
Drawing No.	2520460-96-0-505
Rev.	A

**FOR APPROVAL**  
**NOT FOR CONSTRUCTION**

COPYRIGHT OF THIS DRAWING REMAINS EXCLUSIVELY WITH BECA AND REQUIRES WRITTEN PERMISSION TO BE COPIED OR REPRODUCED IN ANY MANNER



**FOR INFORMATION**  
NOT FOR CONSTRUCTION



SWIRE COLD STORAGE PTY LTD - Marsden Park

Date: 20.07.2015

Drawn: TNC

Perspective - Northwest corner of site

Scale : NTS

2520460-96-0-506 REV B

COPYRIGHT OF THIS DRAWING REMAINS EXCLUSIVELY WITH BECA AND REQUIRES WRITTEN PERMISSION TO BE COPIED OR REPRODUCED IN ANY MANNER



**FOR INFORMATION**  
NOT FOR CONSTRUCTION



SWIRE COLD STORAGE PTY LTD - Marsden Park

Date: 20.07.2015

Drawn: TNC

Perspective - SouthEast corner of site

Scale : NTS

2520460-96-0-507 REV B

COPYRIGHT OF THIS DRAWING REMAINS EXCLUSIVELY WITH BECA AND REQUIRES WRITTEN PERMISSION TO BE COPIED OR REPRODUCED IN ANY MANNER



**FOR INFORMATION**  
**NOT FOR CONSTRUCTION**



SWIRE COLD STORAGE PTY LTD - Marsden Park

Date: 12.05.2015 Drawn: TNC

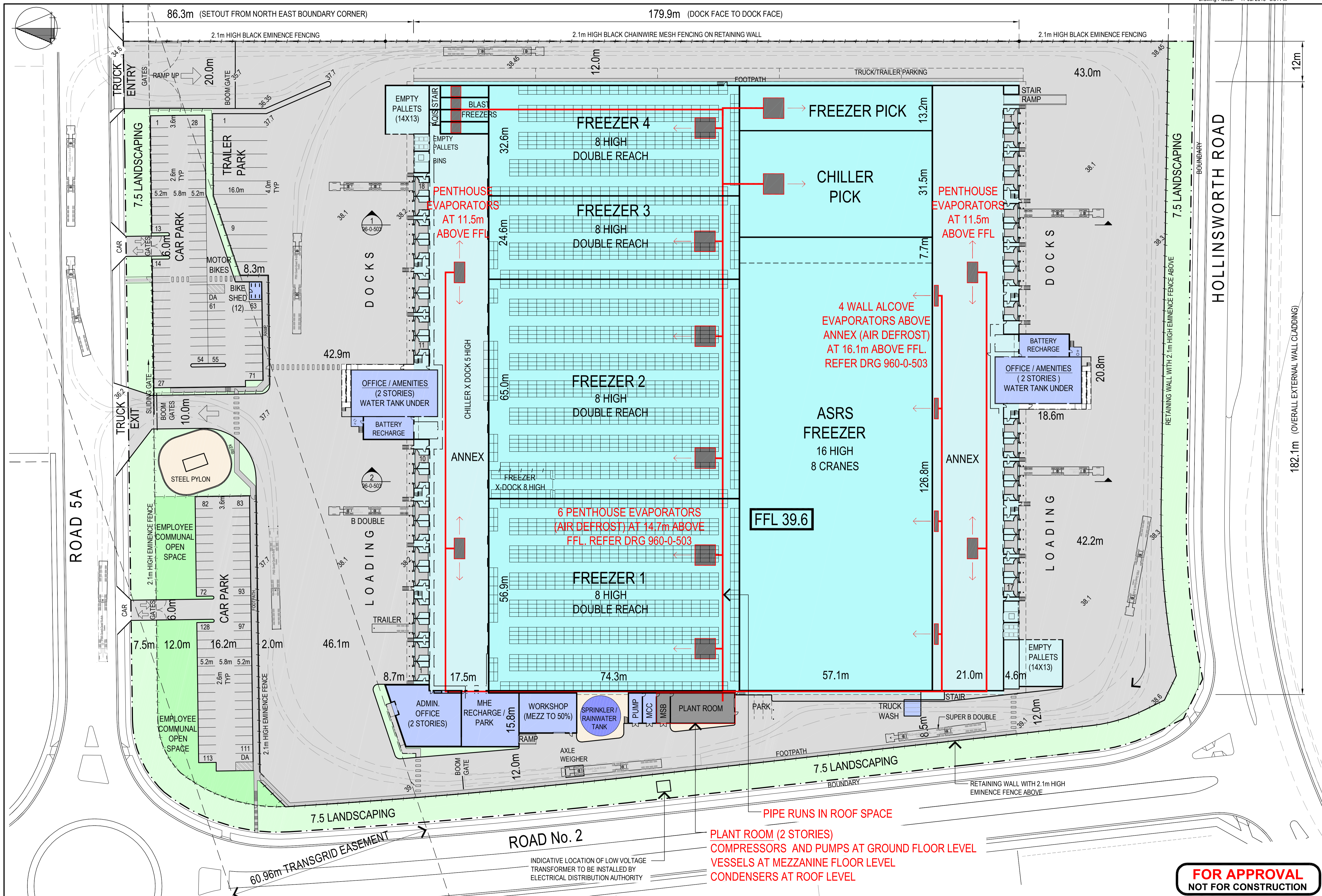
Photomontage - View from Richmond Rd / Hollinsworth Rd Intersection

Scale : NTS

2520460-96-0-508 REV B

P:1252\2520460\1960 - MARS DEN PARK\CAD\2520460-96-0-508 REV B.DWG

DO NOT SCALE DRAWINGS



PENTHOUSE EVAPORATORS AT 11.5m ABOVE FFL

PENTHOUSE EVAPORATORS AT 11.5m ABOVE FFL

4 WALL ALCOVE EVAPORATORS ABOVE ANNEX (AIR DEFROST) AT 16.1m ABOVE FFL. REFER DRG 960-0-503

6 PENTHOUSE EVAPORATORS (AIR DEFROST) AT 14.7m ABOVE FFL. REFER DRG 960-0-503

FFL 39.6

PIPE RUNS IN ROOF SPACE  
 PLANT ROOM (2 STORIES)  
 COMPRESSORS AND PUMPS AT GROUND FLOOR LEVEL  
 VESSELS AT MEZZANINE FLOOR LEVEL  
 CONDENSERS AT ROOF LEVEL

INDICATIVE LOCATION OF LOW VOLTAGE TRANSFORMER TO BE INSTALLED BY ELECTRICAL DISTRIBUTION AUTHORITY

**FOR APPROVAL**  
**NOT FOR CONSTRUCTION**

B	ISSUED FOR EIS APPLICATION	GW	PJS	17.7.15
A	ISSUED FOR EIS APPLICATION	GW	PJS	17.7.15
No.	Revision	By	Chk	Appd

Drawing Originator:

Original Scale (A1)	Design	PJS	16.7.15	Approved For Construction*
1:500	Drawn	GW	16.7.15	Date
Reduce Scale (A3)	Design Check			
1:1000				

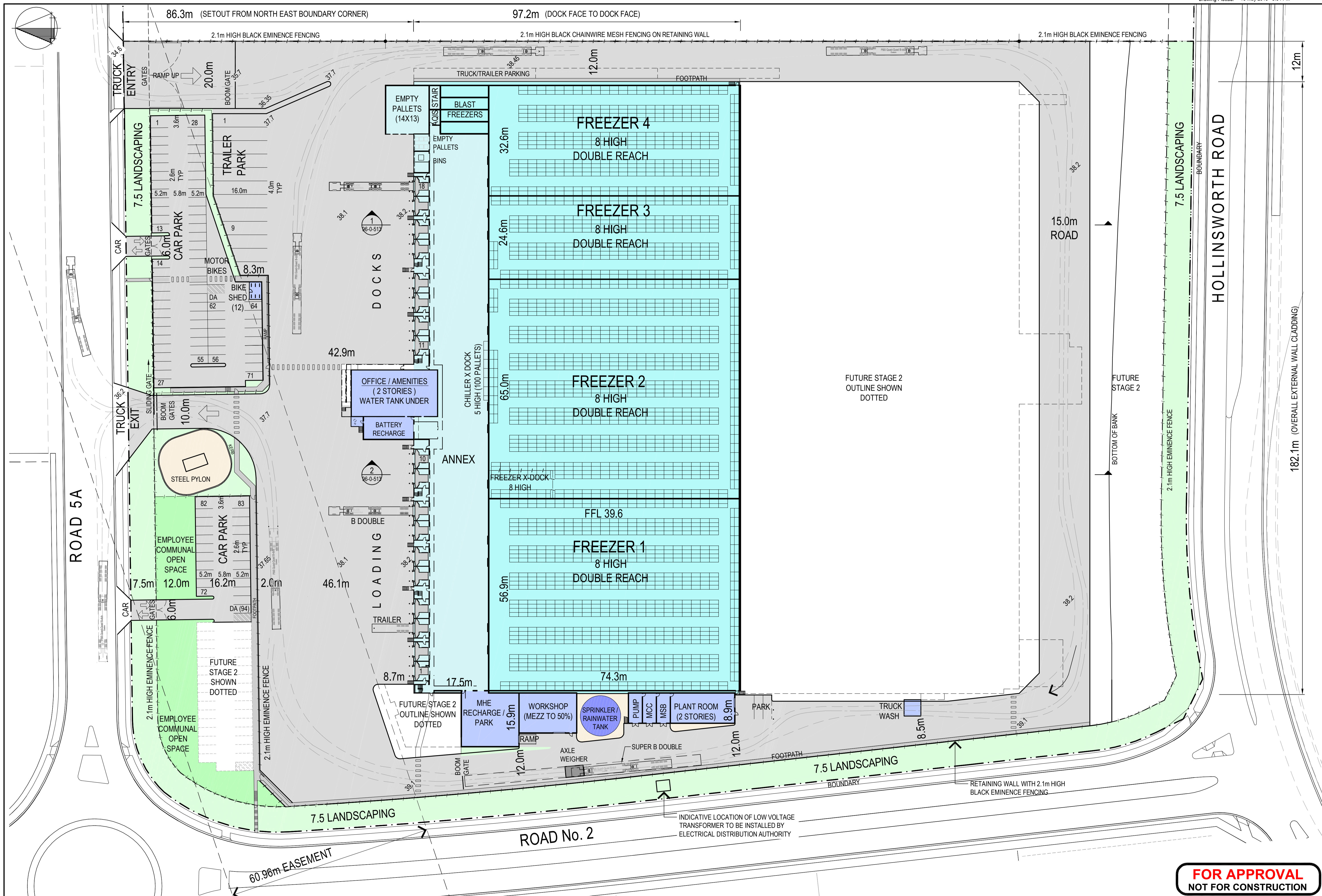
\* Refer to Revision 1 for Original Signature

Client: SWIRE COLD STORAGE PTY LTD

Project: MARSDEN PARK

Title: REFRIGERATION LAYOUT OVERALL DEVELOPMENT

Discipline	PLANNING
Drawing No.	2520460-96-0-509
Rev.	B



B	ISSUED FOR EIS APPLICATION	GW	PJS	13.5.15
A	ISSUED FOR EIS APPLICATION	GW	PJS	08.5.15
No.	Revision	By	Chk	Appd

Drawing Originator:

Original Scale (A1)	Design	PJS	08.5.15
1:500	Drawn	GW	08.5.15
Reduced Scale (A3)	Dwg Verifier		
1:1000	Dwg Check		

Client: SWIRE COLD STORAGE PTY LTD

Project: MARSDEN PARK

Title: GENERAL ARRANGEMENT PLAN  
STAGE 1

Discipline	GENERAL
Drawing No.	2520460-96-0-511
Rev.	B

**FOR APPROVAL**  
**NOT FOR CONSTRUCTION**

DO NOT SCALE


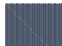


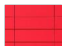

www.beca.com

www.beca.com

Document No. 2520460-96-0-511 REV B.DWG

IF IN DOUBT ASK

**MATERIAL SELECTIONS**

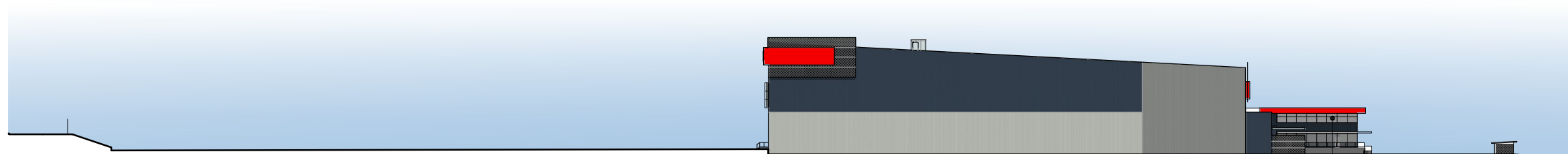
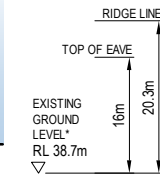
-  TRIMDEK COLORBOND "SHALE GREY"
-  TRIMDEK COLORBOND "DEEP OCEAN"
-  PAINTED CONCRETE TO MATCH COLORBOND "DEEP OCEAN"
-  TRANSLUCENT MULTICELL POLYCARBONATE SHEET CLADDING (DAMPALON OR SIMILAR)
-  ALUMINIUM COMPOSITE PANEL CLADDING (ALUCOBOND OR SIMILAR) - COLOUR "RED"
-  PERFORATED ALUMINIUM SCREEN PANELS

**NOTES**

\* EXISTING GROUND LEVEL AT CENTRE OF BUILDING

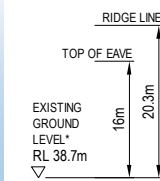


1 NORTH ELEVATION  
1:500

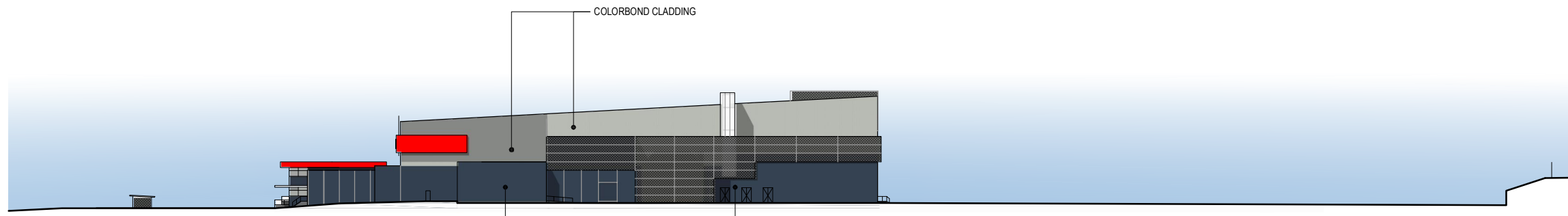
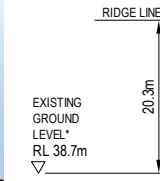


2 EAST ELEVATION  
1:500

ANODISED ALUMINIUM CURTAIN WALL SYSTEM WITH TINTED AND OPAQUE SPANDREL GLASS PANELS

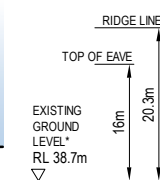


3 SOUTH ELEVATION  
1:500



4 WEST ELEVATION  
1:500

COLORBOND CLADDING  
PAINTED PRECAST CONCRETE  
PAINTED PRECAST CONCRETE



**PRELIMINARY**  
**NOT FOR CONSTRUCTION**

No.	Revision	By	Chk	Appd	Date
B	RE-ISSUED FOR EIS APPLICATION	SC	TNC	PJS	20.07.15
A	ISSUED FOR EIS APPLICATION	SC	TNC	PJS	13.05.15



Original Scale (A1)	Design	PJS	13.05.15	Approved For Construction*
1:500	Drawn	SC	13.05.15	Date
Reduced Scale (A3)	Dwg Verifier			
1:1000	Dwg Check			

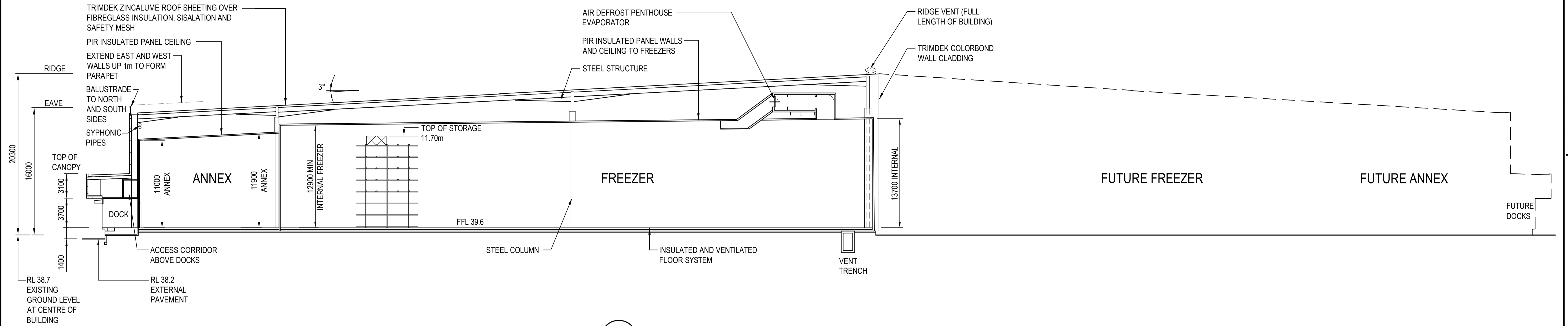
\* Refer to Revision 1 for Original Signature

Client: SWIRE COLD STORAGE PTY LTD

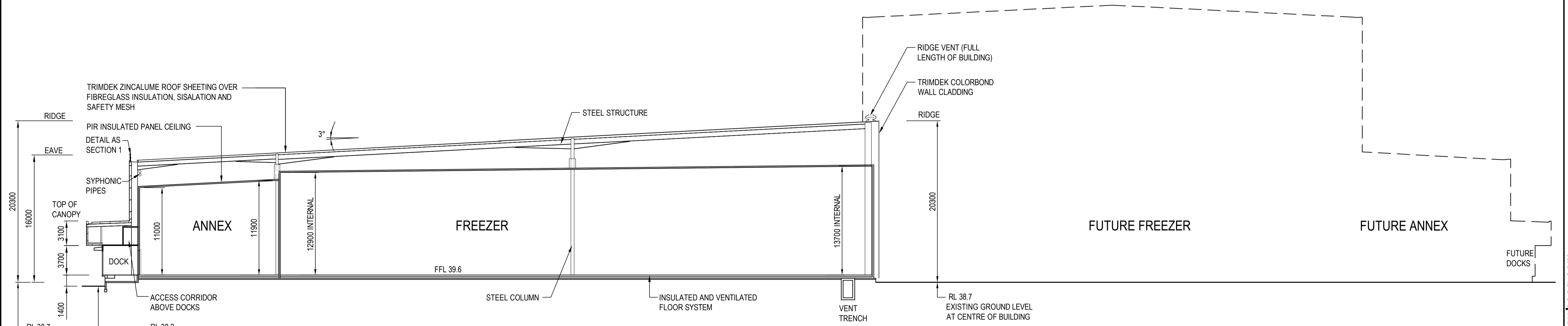
Project: MARSDEN PARK

Title: ELEVATIONS  
STAGE 1

Discipline	GENERAL
Drawing No.	2520460-96-0-512
Rev.	B



1 SECTION  
96-0-511 1:250



2 SECTION  
96-0-511 1:250

No.	Revision	By	Chk	Appd	Date
B	ISSUED FOR EIS APPLICATION	GW	PJS		20.7.15
A	ISSUED FOR EIS APPLICATION	GW	PJS		13.5.15



Original Scale (A1)	Design	PJS	08.5.15	Approved For Construction*
1:250	Drawn	GW	08.5.15	
Reduced Scale (A3)	Dwg Verifier			Date
1:500	Dwg Check			

\* Refer to Revision 1 for Original Signature

Client: SWIRE COLD STORAGE PTY LTD

Project: MARSDEN PARK

Title: SECTIONS STAGE 1

Discipline	PLANNING
Drawing No.	2520460-96-0-513
Rev.	B

**FOR APPROVAL**  
**NOT FOR CONSTRUCTION**