

**APPENDIX 3D
GROUNDWATER
MONITORING DATA**

Summary of Groundwater Results 2024

Site	Water Level (mbgl)			pH			EC (uS/cm)		
	Min	Max	Ave	Min	Max	Ave	Min	Max	Ave
GWa1									
GWa2	3.0	3.5	3.3	6.4	6.6	6.5	862.0	981.0	930.4
GWa3	4.1	4.1	4.1	6.8	6.8	6.8	1730.0	1730.0	1730.0
GWa4	2.5	2.9	2.7	6.9	7.0	6.9	1340.0	1750.0	1555.8
GWa5	1.9	2.4	2.1	7.2	7.5	7.4	8140.0	12400.0	9705.0
GWa6	0.8	1.2	0.9	7.2	7.4	7.3	3770.0	5940.0	4910.0
GWa7									
GWa8	1.3	1.7	1.4	7.1	7.2	7.1	1640.0	1850.0	1745.8
GWa10	3.2	3.6	3.4	7.0	7.1	7.1	2790.0	2960.0	2905.8
GWa11	3.5	3.6	3.5	7.5	7.7	7.6	931.0	1330.0	1118.3
GWa12									
GWa14									
GWa15									
GWa16	2.3	3.0	2.7	7.1	7.1	7.1	18600.0	20700.0	19633.3
GWa32	1.7	2.7	2.0	7.2	7.3	7.2	3350.0	4010.0	3730.0
GWa34	3.6	3.9	3.7	6.5	6.8	6.7	2890.0	3022.5	3022.5
GWa36									
GWc1	9.0	9.7	9.3	7.0	7.1	7.0	1860.0	3360.0	2869.2
GWc2	2.2	4.0	3.0	7.2	7.6	7.4	1220.0	1280.0	1239.2
GWc3	1.5	2.5	2.1	7.0	7.2	7.1	3220.0	4120.0	3732.5
GWc4	13.5	13.6	13.5	6.6	6.7	6.6	2330.0	2450.0	2417.5
GWc5	5.2	5.3	5.3	6.5	6.6	6.6	5310.0	5580.0	5445.8
GWc10	1.8	3.5	2.8	6.9	7.7	7.1	3760.0	3890.0	3820.8
GWc11	5.4	8.0	6.8	6.4	6.8	6.5	2080.0	2760.0	2366.7
GWc12	6.3	8.0	7.1	7.4	7.5	7.4	2550.0	2880.0	2698.3
GWc14	3.0	3.7	3.3	7.3	7.6	7.5	3390.0	3620.0	3537.5
GWc15	4.3	5.3	4.8	7.0	7.4	7.1	3640.0	4010.0	3757.5
GWc16	29.9	31.2	30.6	7.1	7.2	7.2	2090.0	2530.0	2364.2
GWc17									
GWc18									
GWc19									
GWc24									
GWc25	25.4	27.1	26.2	6.5	6.9	6.6	1330.0	1410.0	1366.4
GWc26	51.0	53.5	52.6	7.2	7.3	7.3	1470.0	1510.0	1495.0
GWc27	15.2	16.7	15.7	3.5	4.2	4.0	15.2	16.7	15.7
GWc28									
GWc29									
GWc30	29.4	31.8	29.9	6.6	6.8	6.7	2800.0	3140.0	2973.3
GWc31									
GWc32	3.7	4.5	3.8	6.5	6.8	6.6	3410.0	3520.0	3465.8
GWc33									
GWc34	19.5	19.9	19.7	7.0	7.0	7.0	3990.0	3990.0	3990.0
GWc35									
GWc36	7.9	9.6	8.6	6.4	6.6	6.5	3680.0	3980.0	3864.2
GWc37	24.9	25.1	25.0	6.2	6.3	6.2	2400.0	2480.0	2440.0
GWf1									
GWf2									
GWf3	18.1	19.3	18.6	6.6	6.8	6.7	3200.0	4490.0	3970.0
GWf4									
GWf5									
GWf6									
GWf7									

Summary of Groundwater Results 2023

Site	Water Level (mbgl)			pH			EC (uS/cm)		
	Min	Max	Ave	Min	Max	Ave	Min	Max	Ave
GWa1									
GWa2	2.05	2.50	2.29	6.50	6.70	6.54	901	1090	983
GWa3	3.48	3.90	3.74	6.70	6.90	6.80	1790	2140	1964
GWa4	2.24	2.89	2.56	6.70	7.00	6.85	1560	2110	1823
GWa5	1.28	1.99	1.63	7.10	7.40	7.28	7880	12200	9571
GWa6	0.43	0.98	0.63	7.20	7.40	7.36	3680	4390	4121
GWa7	3.88	3.98	3.93						
GWa8	1.35	1.66	1.46	6.70	7.20	7.01	1920	2510	2177
GWa10	2.92	3.27	3.18	6.80	7.10	7.03	2870	3250	3005
GWa11	3.35	3.67	3.56	7.30	7.60	7.45	1110.00	1700.00	1383.64
GWa12	2.73	3.30	3.02	7.40	7.60	7.50	1410.00	1460.00	1435.00
GWa14									
GWa15	2.55	2.80	2.68	7.40	7.50	7.47	1540.00	1660.00	1583.33
GWa16	1.93	2.73	2.35	6.80	7.10	6.96	20000.00	21900.00	20708.33
GWa32	1.64	2.54	1.90	7.10	7.30	7.15	3340.00	3990.00	3745.83
GWa34	2.98	4.75	3.72	5.90	7.40	6.80	2550.00	3544.00	3544.00
GWa36	4.30	4.75	4.50	7.30	7.40	7.33	4500.00	5100.00	4793.33
GWc1	8.72	9.29	9.15	6.90	7.40	7.09	1740.00	2080.00	1920.00
GWc2	1.13	3.95	2.23	7.10	7.70	7.33	1210.00	1290.00	1232.50
GWc3	1.57	1.98	1.79	6.80	7.10	7.01	3660.00	4230.00	3975.00
GWc4	12.62	13.45	12.98	6.40	6.60	6.53	2340.00	2500.00	2409.09
GWc5	3.67	5.84	4.89	6.40	6.50	6.46	5110.00	5450.00	5279.17
GWc10	1.77	3.39	2.83	6.70	7.20	6.91	3640.00	3870.00	3729.17
GWc11	5.41	7.72	6.27	6.20	6.60	6.39	1400.00	1910.00	1687.50
GWc12	4.93	7.92	6.14	7.40	7.60	7.47	2300.00	2600.00	2456.67
GWc14	1.27	3.42	2.12	7.30	7.70	7.47	2710.00	3450.00	3080.00
GWc15	3.11	4.80	3.83	6.90	7.40	7.13	1880.00	4190.00	3028.33
GWc16	28.10	31.41	30.65	7.00	7.20	7.14	2300.00	2650.00	2456.36
GWc17									
GWc18									
GWc19									
GWc24									
GWc25	8.27	24.91	21.07	6.40	6.90	6.63	439.00	1360.00	1006.80
GWc26	52.24	52.76	52.53	7.20	11.60	8.12	1110.00	1500.00	1404.00
GWc27	14.76	15.09	14.95	3.80	4.20	3.98	14.76	15.09	14.95
GWc28									
GWc29									
GWc30	29.73	31.85	31.07	6.50	6.90	6.67	2900.00	3390.00	3196.67
GWc31	44.91	45.96	45.41	6.40	6.60	6.53	4910.00	5030.00	4960.00
GWc32	1.51	4.31	2.91	6.40	6.80	6.57	3360.00	3550.00	3472.50
GWc33	49.94	52.35	51.38	12.10	12.30	12.23	3890.00	4050.00	3972.50
GWc34									
GWc35									
GWc36	6.83	9.46	7.97	6.30	6.60	6.50	3620.00	3830.00	3741.82
GWc37	25.01	25.20	25.12	6.20	6.40	6.25	2400.00	2540.00	2447.27
GWf1	16.17	16.17	16.17						
GWf2									
GWf3	17.99	19.33	18.82	6.50	6.80	6.66	3740.00	4470.00	4259.09
GWf4									
GWf5	19.44	19.88	19.88	6.70	6.70	6.70	4010.00	4010.00	4010.00
GWf6									
GWf7									

Summary of Groundwater Results 2022

Site	Water Level (mbgl)			pH			EC (uS/cm)		
	Min	Max	Ave	Min	Max	Ave	Min	Max	Ave
GWa1	-	-	-	-	-	-	-	-	-
GWa2	0.82	1.19	1.04	6.60	7.00	6.76	447	884	587
GWa3	2.22	3.91	3.18	6.70	7.40	6.97	567	1740	1175
GWa4	-	-	-	7.20	7.20	7.20	-	-	-
GWa5	0.76	2.49	1.71	7.20	7.60	7.35	1300	16000	9248
GWa6	0.44	1.28	0.80	7.20	7.50	7.37	2120	4520	3131
GWa7	3.01	3.90	3.43	7.20	7.50	7.30	12700	14300	13500
GWa8	0.78	1.45	1.15	6.90	7.10	7.02	876	2540	2308
GWa10	2.64	3.10	2.95	6.80	7.10	6.95	2180	4070	3440
GWa11	2.96	3.54	3.37	7.30	7.70	7.51	1030.00	1610.00	1328.18
GWa12	2.00	3.51	2.91	7.50	7.90	7.66	540.00	1360.00	941.43
GWa14	1.44	4.42	2.93	7.30	7.30	0.00	911.00	911.00	911.00
GWa15	1.97	2.66	2.43	7.10	7.70	7.47	579.00	1310.00	1087.14
GWa16	0.89	2.05	1.48	7.00	7.40	7.18	2090.00	22600.00	18298.33
GWa32	1.18	1.83	1.54	7.10	7.30	7.20	2980.00	3940.00	3490.00
GWa34	2.59	4.87	3.63	4.40	7.40	6.25	117.00	3197.06	3197.06
GWa36	3.48	4.87	4.02	7.10	7.40	7.32	4600.00	6460.00	5448.33
GWc1	8.77	10.21	9.70	6.90	7.10	7.03	2920.00	3390.00	3176.00
GWc2	1.75	8.93	5.08	7.00	7.50	7.17	1150.00	1320.00	1247.27
GWc3	2.57	5.88	4.41	7.40	7.60	7.46	2630.00	4640.00	3852.00
GWc4	12.73	14.76	13.89	6.40	6.80	6.61	2140.00	2530.00	2400.83
GWc5	3.54	5.90	4.83	6.30	6.60	6.53	5250.00	5620.00	5460.83
GWc10	1.30	4.92	3.45	6.70	7.20	6.88	3430.00	3920.00	3660.00
GWc11	5.57	9.68	7.65	6.30	6.70	6.44	1490.00	3150.00	2038.33
GWc12	7.52	12.38	10.09	7.40	7.60	7.49	2150.00	2420.00	2251.43
GWc14	4.10	9.16	6.87	7.40	7.60	7.48	2550.00	2870.00	2626.25
GWc15	6.04	10.09	8.48	7.00	7.30	7.20	1440.00	1580.00	1494.29
GWc16	25.10	31.18	28.56	7.10	7.30	7.20	2180.00	2540.00	2349.17
GWc17	-	-	-	-	-	-	-	-	-
GWc18	-	-	-	-	-	-	-	-	-
GWc19	-	-	-	-	-	-	-	-	-
GWc24	-	-	-	-	-	-	-	-	-
GWc25	4.66	7.52	6.09	6.60	6.80	6.69	330.00	602.00	424.45
GWc26	47.59	51.27	49.21	7.10	9.20	7.63	716.00	1360.00	1178.00
GWc27	15.38	16.60	15.90	3.40	4.70	3.64	15.38	16.60	15.90
GWc28	-	-	-	-	-	-	-	-	-
GWc29	-	-	-	-	-	-	-	-	-
GWc30	21.61	30.35	28.73	6.60	7.60	6.86	1260.00	3350.00	2784.44
GWc31	47.99	50.56	49.28	6.70	6.70	6.70	4960.00	4960.00	4960.00
GWc32	1.74	4.03	3.45	6.40	7.00	6.61	3150.00	6250.00	3678.33
GWc33	43.73	48.77	47.04	12.10	12.70	12.39	4080.00	4910.00	4628.00
GWc34	19.42	20.24	19.75	6.80	7.10	6.97	4230.00	4350.00	4276.67
GWc35	-	-	-	-	-	-	-	-	-
GWc36	7.12	11.65	9.51	6.50	6.90	6.65	2950.00	3830.00	3487.50
GWc37	25.10	25.38	25.24	6.20	6.40	6.25	2310.00	2510.00	2445.00
GWf1	-	-	-	-	-	-	-	-	-
GWf2	24.15	24.26	24.20	-	-	-	-	-	-
GWf3	17.36	19.10	18.12	6.70	6.80	6.73	3700.00	3980.00	3840.00
GWf4	12.79	13.01	12.90	-	-	-	-	-	-
GWf5	-	-	-	-	-	-	-	-	-
GWf6	9.79	9.79	9.79	-	-	-	-	-	-
GWf7	9.96	9.96	9.96	-	-	-	-	-	-

Summary of Groundwater Results 2021

Site	Water Level (mbgl)			pH			EC (uS/cm)		
	Min	Max	Ave	Min	Max	Ave	Min	Max	Ave
GWa1	0.00	0.00	0.00	0.00	0.00	0.00	0.00	0.00	0.00
GWa2	0.99	1.61	1.26	6.60	6.90	6.73	533.00	931.00	639.75
GWa3	2.70	4.28	3.94	6.80	7.40	7.16	604.00	1660.00	1241.42
GWa4	3.67	4.22	3.95	7.20	7.20	7.20	3300.00	4390.00	3845.00
GWa5	2.62	3.68	3.23	7.40	7.60	7.48	13600.00	21200.00	17480.00
GWa6	0.93	1.96	1.35	7.40	8.10	7.80	1710.00	5760.00	3251.00
GWa7	3.96	4.39	4.08	7.20	7.50	7.30	12700.00	14300.00	13500.00
GWa8	0.94	1.61	1.39	7.00	7.20	7.08	2500.00	2710.00	2604.17
GWa10	1.35	3.80	2.70	6.80	8.00	7.40	380.00	22100.00	4958.21
GWa11	3.39	3.77	3.53	7.40	7.60	7.48	1200.00	1430.00	1295.00
GWa12	1.35	13.35	5.15	7.40	8.00	7.87	380.00	1350.00	546.83
GWa14	2.39	2.39	2.39	7.20	7.20	0.00	1100.00	1100.00	1100.00
GWa15	2.36	2.74	2.59	6.80	7.70	7.15	1300.00	1430.00	1350.83
GWa16	1.35	2.17	1.72	7.40	7.50	7.43	19800.00	22100.00	20808.33
GWa32	1.52	20.30	9.74	3.70	14.59	7.13	166.00	6830.00	3344.28
GWa34	4.17	5.89	4.49	3.70	7.50	4.73	166.00	5353.54	5353.54
GWa36	15.03	15.03	15.03	3.50	3.50	3.50	1800.00	1800.00	1800.00
GWc1	9.23	10.35	10.04	7.00	7.20	7.08	3270.00	3660.00	3444.17
GWc2	9.91	13.35	12.01	7.10	7.20	7.18	1130.00	1270.00	1201.67
GWc3	6.90	7.50	7.13	5.75	14.59	10.59	4610.00	6640.00	5599.17
GWc4	14.65	15.76	14.91	6.60	6.70	6.68	2310.00	2460.00	2393.64
GWc5	5.22	5.71	5.53	6.50	6.80	6.68	5400.00	5690.00	5549.17
GWc10	2.02	4.21	3.44	6.80	7.10	6.91	3490.00	3790.00	3607.50
GWc11	10.49	12.92	11.98	6.50	6.60	6.56	3310.00	3490.00	3390.83
GWc12	14.10	20.30	17.70	7.40	7.60	7.54	1750.00	2100.00	1920.00
GWc14	10.54	18.45	14.41	7.20	7.60	7.40	1970.00	2570.00	2245.00
GWc15	3.86	49.01	23.34	3.50	12.50	7.28	183.00	4850.00	2605.86
GWc16	28.72	31.43	30.64	7.20	7.30	7.25	2010.00	2200.00	2110.00
GWc17	0.00	0.00	0.00	0.00	0.00	0.00	0.00	0.00	0.00
GWc18	0.00	0.00	0.00	0.00	0.00	0.00	0.00	0.00	0.00
GWc19	0.00	0.00	0.00	0.00	0.00	0.00	0.00	0.00	0.00
GWc24	0.00	0.00	0.00	0.00	0.00	0.00	0.00	0.00	0.00
GWc25	8.28	28.75	23.53	3.50	12.50	7.31	183.00	4850.00	2813.89
GWc26	3.86	49.01	34.87	3.50	12.50	7.39	183.00	4850.00	3012.36
GWc27	0.00	0.00	0.00	0.00	0.00	0.00	0.00	0.00	0.00
GWc28	0.00	0.00	0.00	0.00	0.00	0.00	0.00	0.00	0.00
GWc29	0.00	0.00	0.00	0.00	0.00	0.00	0.00	0.00	0.00
GWc30	30.24	31.50	30.77	6.80	6.90	6.83	3050.00	3300.00	3163.33
GWc31	0.00	0.00	0.00	0.00	0.00	0.00	0.00	0.00	0.00
GWc32	3.86	4.12	4.01	6.50	6.80	6.72	183.00	3560.00	2922.67
GWc33	42.65	46.74	36.57	7.20	12.50	10.60	2250.00	4850.00	3925.00
GWc34	20.29	20.46	20.39	7.20	7.40	7.25	4350.00	4490.00	4436.67
GWc35	0.00	0.00	0.00	0.00	0.00	0.00	0.00	0.00	0.00
GWc36	12.95	14.71	13.68	6.50	6.70	6.61	2830.00	3630.00	3079.17
GWc37	25.10	25.11	25.11	6.30	6.40	6.37	2460.00	2500.00	2473.33

Summary of Groundwater Results 2020

Site	Water Level (mbgl)			pH			EC (uS/cm)		
	Min	Max	Ave	Min	Max	Ave	Min	Max	Ave
GWa1	4.97	5.02	5.00	0.00	0.00	0.00	0.00	0.00	
GWa2	1.33	5.42	2.32	6.80	6.90	6.82	916.00	1620.00	1371.60
GWa3	4.17	5.60	4.99	7.30	7.30	7.30	821.00	1160.00	
GWa4	4.91	5.17	5.04	7.20	7.30	0.00	0.00	0.00	0.00
GWa5	3.28	3.80	3.64	7.20	7.40	7.28	14600.00	17800.00	16450.00
GWa6	1.29	2.90	1.88	7.70	7.90	7.83	3060.00	10800.00	6436.00
GWa7	4.29	5.19	4.77	7.20	7.30	7.25	13500.00	13800.00	13650.00
GWa8	1.41	2.61	1.75	7.00	7.10	7.01	2450.00	2760.00	2632.73
GWa10	3.00	5.33	3.72	6.30	7.30	7.02	586.00	3430.00	1545.91
GWa11	3.47	4.74	3.78	7.40	7.60	7.51	1300.00	1520.00	1408.57
GWa12	3.05	5.80	3.80	7.60	8.10	7.83	394.00	1990.00	783.14
GWa14	1.72	4.96	2.61	7.60	7.70	0.00	907.00	1040.00	984.25
GWa15	2.50	4.02	2.77	7.00	7.00	7.00	1290.00	1780.00	1532.50
GWa16	1.40	4.05	2.41	0.00	0.00		15800.00	19400.00	17500.00
GWa32	1.72	2.72	1.95	7.10	7.40	7.29	3090.00	4780.00	3775.83
GWa34	3.89	4.80	4.41	3.80	5.70	4.63	748.00	4783.80	4783.80
GWa36	5.94	5.97	5.96	0.00	0.00		0.00	0.00	#DIV/0!
GWc1	10.64	21.11	12.58	7.00	7.30	7.11	2300.00	3960.00	2835.00
GWc2	13.34	21.19	16.74	7.10	7.20	7.16	1230.00	1390.00	1281.82
GWc3	13.97	16.46	15.24	7.00	7.00	7.00	4890.00	6000.00	5505.00
GWc4	15.19	16.42	15.88	6.50	6.80	6.70	2150.00	2460.00	2389.17
GWc5	5.71	6.74	6.32	6.60	6.90	6.71	5410.00	5630.00	5531.54
GWc10	5.74	11.60	7.45	6.90	7.30	7.10	3750.00	3910.00	3810.00
GWc11	13.95	22.68	17.18	6.20	6.60	6.42	2430.00	4280.00	3184.55
GWc12	21.74	39.59	29.33	7.00	7.50	7.24	1240.00	4740.00	3012.50
GWc14	21.29	37.13	28.41	7.10	7.50	7.33	1280.00	2060.00	1663.64
GWc15	22.31	32.91	27.46	7.10	7.20	7.14	1290.00	1780.00	1532.50
GWc16	30.39	32.36	31.54	7.20	7.30	7.26	1910.00	1990.00	1941.82
GWc17	0.00	0.00	0.00	0.00	0.00	0.00	0.00	0.00	0.00
GWc18	0.00	0.00	0.00	0.00	0.00	0.00	0.00	0.00	0.00
GWc19	0.00	0.00	0.00	0.00	0.00	0.00	0.00	0.00	0.00
GWc24	0.00	0.00	0.00	0.00	0.00	0.00	0.00	0.00	0.00
GWc25	32.44	35.27	34.05	6.80	6.90	6.85	2170.00	2190.00	2180.00
GWc26	43.01	44.91	43.76	7.00	7.50	7.28	1220.00	1350.00	1298.18
GWc27	16.62	16.62	16.62	4.80	5.90	5.23	16.62	16.62	16.62
GWc28	0.00	0.00	0.00	0.00	0.00	0.00	0.00	0.00	0.00
GWc29	0.00	0.00	0.00	0.00	0.00	0.00	0.00	0.00	0.00
GWc30	31.04	33.39	32.00	6.70	6.90	6.83	3070.00	3280.00	3126.67
GWc31	50.98	51.04	51.01	0.00	0.00		0.00	0.00	
GWc32	3.89	5.18	4.30	6.60	7.20	6.82	217.00	3590.00	2893.42
GWc33	40.54	49.57	42.60	12.10	12.40	12.28	2330.00	4450.00	3245.00
GWc34	20.26	20.51	20.35	7.20	7.20	7.20	4730.00	4730.00	4730.00
GWc35	49.95	49.95	49.95	0.00	0.00		0.00	0.00	
GWc36	15.31	18.67	16.49	6.00	6.50	6.34	3390.00	4160.00	3642.22

Summary of Groundwater Results 2019

Site	Water Level (mbgl)			pH			EC (uS/cm)		
	Min	Max	Ave	Min	Max	Ave	Min	Max	Ave
GWa1	4.97	4.97	4.97	0.00	0.00	0.00	0.00	0.00	0.00
GWa2	4.80	5.16	5.04	6.80	6.90	6.84	1390.00	1540.00	1482.73
GWa3	5.61	5.61	5.61	0.00	0.00	0.00	0.00	0.00	0.00
GWa4	5.12	5.17	5.15	0.00	0.00	0.00	0.00	0.00	0.00
GWa5	3.87	4.07	3.98	7.50	7.50	7.50	10900.00	11800.00	11225.00
GWa6	2.89	2.89	2.89	0.00	0.00	0.00	0.00	0.00	0.00
GWa7	5.19	5.19	5.19	0.00	0.00	0.00	0.00	0.00	0.00
GWa8	1.59	2.26	1.85	7.00	7.10	7.03	2220.00	2440.00	2355.00
GWa10	4.80	5.19	5.00	7.00	7.10	7.05	3260.00	3370.00	3340.83
GWa11	4.72	4.74	4.73	0.00	0.00	0.00	0.00	0.00	0.00
GWa12	5.80	5.80	5.80	0.00	0.00	0.00	0.00	0.00	0.00
GWa14	4.95	4.95	4.95	0.00	0.00	0.00	0.00	0.00	0.00
GWa15	3.80	3.88	3.84	0.00	0.00	0.00	0.00	0.00	0.00
GWa16	4.08	4.08	4.08	0.00	0.00	0.00	0.00	0.00	0.00
GWa32	1.92	2.54	2.13	7.20	7.50	7.29	3040.00	4070.00	3315.00
GWa34	4.51	4.73	4.63	4.30	4.90	4.60	6140.00	6298.33	6298.33
GWa36	5.94	5.94	5.94	0.00	0.00	0.00	0.00	0.00	#DIV/0!
GWc1	11.23	12.52	11.88	7.00	7.20	7.11	2740.00	3410.00	3010.00
GWc2	16.42	20.38	18.68	7.10	7.20	7.12	1190.00	1280.00	1249.17
GWc3	15.27	16.26	15.62	6.90	6.90	6.90	4380.00	4430.00	4413.33
GWc4	15.52	16.15	15.84	6.60	6.70	6.65	2340.00	2410.00	2374.17
GWc5	5.91	6.82	6.27	6.60	6.70	6.68	5310.00	5560.00	5447.50
GWc10	6.26	9.48	7.60	7.00	7.40	7.13	3750.00	3900.00	3835.00
GWc11	16.65	21.86	19.35	6.40	6.60	6.43	3760.00	4300.00	4160.00
GWc12	33.49	39.06	37.32	7.10	7.40	7.18	2040.00	4510.00	3645.00
GWc14	29.80	36.80	34.50	7.20	7.40	7.34	1110.00	1260.00	1180.00
GWc15	26.17	32.92	30.63	7.00	7.30	7.17	1570.00	1800.00	1702.50
GWc16	30.76	32.70	31.97	7.20	7.30	7.21	1870.00	2110.00	1935.83
GWc17	0.00	0.00	0.00	0.00	0.00	0.00	0.00	0.00	0.00
GWc18	0.00	0.00	0.00	0.00	0.00	0.00	0.00	0.00	0.00
GWc19	0.00	0.00	0.00	0.00	0.00	0.00	0.00	0.00	0.00
GWc24	23.62	26.28	24.91	4.60	4.80	4.73	3470.00	3620.00	3523.33
GWc25	29.66	48.31	32.94	6.80	7.00	6.87	1690.00	2140.00	1991.67
GWc26	40.81	42.52	41.85	7.10	7.30	7.15	1200.00	1270.00	1235.83
GWc27	16.14	16.57	16.44	4.90	5.80	5.34	16.14	16.57	16.44
GWc28	43.21	44.61	43.80	6.70	6.80	6.78	3210.00	3310.00	3280.00
GWc29	44.00	45.21	44.54	6.80	7.00	6.86	2250.00	2440.00	2360.00
GWc30	31.90	33.02	32.48	6.70	6.90	6.80	2920.00	3150.00	3033.33
GWc31	51.14	51.34	51.26	0.00	0.00	0.00	0.00	0.00	0.00
GWc32	4.43	4.89	4.59	6.60	6.80	6.69	3400.00	3550.00	3470.00
GWc33	40.45	42.75	41.42	12.30	12.50	12.41	4470.00	5010.00	4668.33
GWc34	20.26	20.50	20.36	7.10	7.20	7.15	4610.00	4760.00	4682.50
GWc35	47.73	48.17	47.90	7.00	7.20	7.08	1180.00	1220.00	1202.00
GWc36	16.37	17.77	17.26	6.10	6.30	6.23	4010.00	4350.00	4215.56

Summary of Groundwater Results 2018

Site	Water Level (mbgl)			pH			EC (uS/cm)		
	Min	Max	Ave	Min	Max	Ave	Min	Max	Ave
GWa1	4.95	4.97	4.96	0.00	0.00	0.00	0.00	0.00	0.00
GWa2	3.96	4.66	4.40	6.70	7.00	6.91	1310.00	1440.00	1395.00
GWa3	5.61	5.61	5.61	0.00	0.00	0.00	0.00	0.00	0.00
GWa4	4.87	5.17	4.97	0.00	0.00	0.00	0.00	0.00	0.00
GWa5	3.87	4.21	3.99	7.40	7.70	7.52	11700.00	14800.00	13360.00
GWa6	2.89	2.89	2.89	0.00	0.00	0.00	0.00	0.00	0.00
GWa7	4.61	5.20	4.97	7.10	7.10	7.10	10800.00	11000.00	10900.00
GWa8	1.56	2.34	1.87	6.90	7.10	7.03	2000.00	2580.00	2156.67
GWa10	4.39	4.64	4.55	6.90	7.20	7.07	3220.00	3400.00	3285.00
GWa11	3.42	4.20	3.68	7.50	7.80	7.69	1560.00	3570.00	2062.22
GWa12	5.39	5.80	5.70	0.00	0.00	0.00	0.00	0.00	0.00
GWa14	4.96	4.97	4.97	0.00	0.00	0.00	0.00	0.00	0.00
GWa15	3.57	3.66	3.62	0.00	0.00	0.00	0.00	0.00	0.00
GWa16	3.95	4.07	4.04	0.00	0.00	0.00	0.00	0.00	0.00
GWa32	1.91	3.16	2.40	7.10	7.40	7.24	3250.00	3800.00	3385.83
GWa34	4.49	4.55	4.53	4.30	4.90	4.57	5970.00	6060.83	6060.83
GWa36	5.84	5.94	5.92	0.00	0.00	0.00	0.00	0.00	0.00
GWc1	10.59	11.31	10.93	6.90	7.20	7.10	3410.00	3660.00	3535.83
GWc2	14.50	15.87	15.26	7.00	7.20	7.12	1210.00	1290.00	1249.17
GWc3	13.10	15.32	14.35	6.70	6.90	6.82	3840.00	4500.00	4133.33
GWc4	14.98	15.43	15.17	6.60	6.70	6.64	2300.00	2580.00	2385.00
GWc5	5.56	6.02	5.83	6.50	6.70	6.63	3570.00	5740.00	5221.67
GWc10	4.60	5.63	5.10	6.70	7.40	7.11	3660.00	3800.00	3726.36
GWc11	15.15	16.02	15.64	6.50	6.70	6.54	3300.00	3850.00	3615.00
GWc12	32.02	36.57	34.92	7.20	7.60	7.43	1270.00	1660.00	1425.00
GWc14	22.89	33.27	30.42	7.30	7.70	7.39	940.00	1160.00	1083.64
GWc15	22.60	29.37	26.91	6.60	7.10	6.88	1600.00	3260.00	2286.67
GWc16	25.61	29.79	27.73	7.10	7.40	7.20	1940.00	2520.00	2179.17
GWc17	42.76	43.81	43.37	6.90	7.10	6.97	1920.00	2800.00	2171.11
GWc18	0.00	0.00	0.00	0.00	0.00	0.00	0.00	0.00	0.00
GWc19	31.06	35.47	33.27	6.50	6.50	6.50	1860.00	1930.00	1895.00
GWc24	22.19	23.16	22.57	3.70	6.00	5.20	3450.00	3580.00	3530.00
GWc25	27.94	29.53	28.67	6.90	7.60	7.33	1550.00	1710.00	1653.33
GWc26	39.47	40.79	40.00	7.10	7.40	7.25	1240.00	1480.00	1333.33
GWc27	15.62	16.16	15.87	4.30	5.70	4.98	15.62	16.16	15.87
GWc28	39.16	44.77	41.81	6.70	6.80	6.78	3000.00	3540.00	3243.33
GWc29	39.91	45.01	42.21	6.80	7.10	6.93	2170.00	2580.00	2258.33
GWc30	31.09	33.25	32.21	6.70	7.00	6.80	2930.00	3100.00	3004.17
GWc31	50.61	51.29	51.03	6.80	6.80	6.80	4190.00	4190.00	4190.00
GWc32	4.06	4.36	4.24	6.50	6.80	6.68	3380.00	3650.00	3448.33
GWc33	39.39	42.22	40.62	12.40	12.60	12.48	5220.00	6950.00	6004.17
GWc34	20.31	20.70	20.48	7.00	7.10	7.08	4330.00	4700.00	4536.00
GWc35	42.06	47.37	44.13	6.90	7.40	7.10	538.00	1240.00	764.25
GWc36	15.13	15.89	15.67	6.30	6.50	6.41	3350.00	4150.00	3843.33

Summary of Groundwater Results 2017

Site	Water Level (mbgl)			pH			EC (uS/cm)		
	Min	Max	Ave	Min	Max	Max	Min	Max	Ave
GWa1	0.00	0.00	0.00	0.00	0.00	0.00	4.89	5.02	4.93
GWa2	2.58	3.70	3.33	6.50	6.60	6.53	1420.00	1690.00	1518.57
GWa3	4.10	4.51	4.31	7.20	7.30	7.22	1550.00	2000.00	1816.67
GWa4	0.00	0.00	0.00	0.00	0.00	0.00	0.00	0.00	0.00
GWa5	3.60	4.01	3.83	7.40	7.60	7.49	10400.00	15800.00	13296.36
GWa6	1.16	2.15	1.75	7.60	7.60	7.60	8210.00	13600.00	12101.67
GWa7	4.52	4.60	4.56	7.00	7.00	7.00	10400.00	10500.00	10450.00
GWa8	1.42	1.98	1.59	6.90	7.10	7.02	2330.00	2520.00	2430.00
GWa10	3.82	4.17	3.96	6.90	7.10	6.98	3320.00	3470.00	3399.17
GWa11	3.34	3.75	3.49	7.20	7.80	7.65	1450.00	1960.00	1707.50
GWa12	3.86	4.97	4.48	7.70	7.80	7.74	820.00	870.00	843.00
GWa14	4.97	31.45	18.21	0.00	0.00	0.00	0.00	0.00	0.00
GWa15	2.81	3.21	3.07	7.10	7.10	7.10	710.00	710.00	710.00
GWa16	3.47	3.52	3.50	7.30	7.40	7.35	18300.00	18500.00	18400.00
GWa22	-	-	-	-	-	-	-	-	-
GWa32	1.81	3.93	2.19	7.10	7.30	7.21	3480.00	4430.00	4062.50
GWa34	2.43	4.49	4.246818182	4.30	4.90	4.51	5190.00	6210.00	5843.333333
GWc1	9.51	10.20	9.77	7.00	7.30	7.15	2080.00	3540.00	2913.33
GWc2	12.85	14.43	13.80	7.00	7.20	7.11	1240.00	1300.00	1271.67
GWc3	9.27	11.46	10.21	6.80	6.90	6.81	3920.00	4410.00	4037.50
GWc4	14.55	14.85	14.69	6.60	6.70	6.65	2370.00	3110.00	2467.50
GWc5	5.71	6.33	6.00	6.50	6.70	6.61	5340.00	5620.00	5515.00
GWc10	1.84	3.93	2.44	6.50	7.00	6.79	3530.00	3710.00	3605.00
GWc11	14.19	14.59	14.37	6.50	6.60	6.55	3510.00	3710.00	3649.17
GWc12	30.04	34.60	32.61	7.10	7.50	7.28	1160.00	3580.00	1975.00
GWc14	26.33	31.45	29.27	7.30	7.40	7.34	1090.00	1120.00	1104.17
GWc15	2.81	3.21	3.07	7.10	7.10	7.10	710.00	710.00	710.00

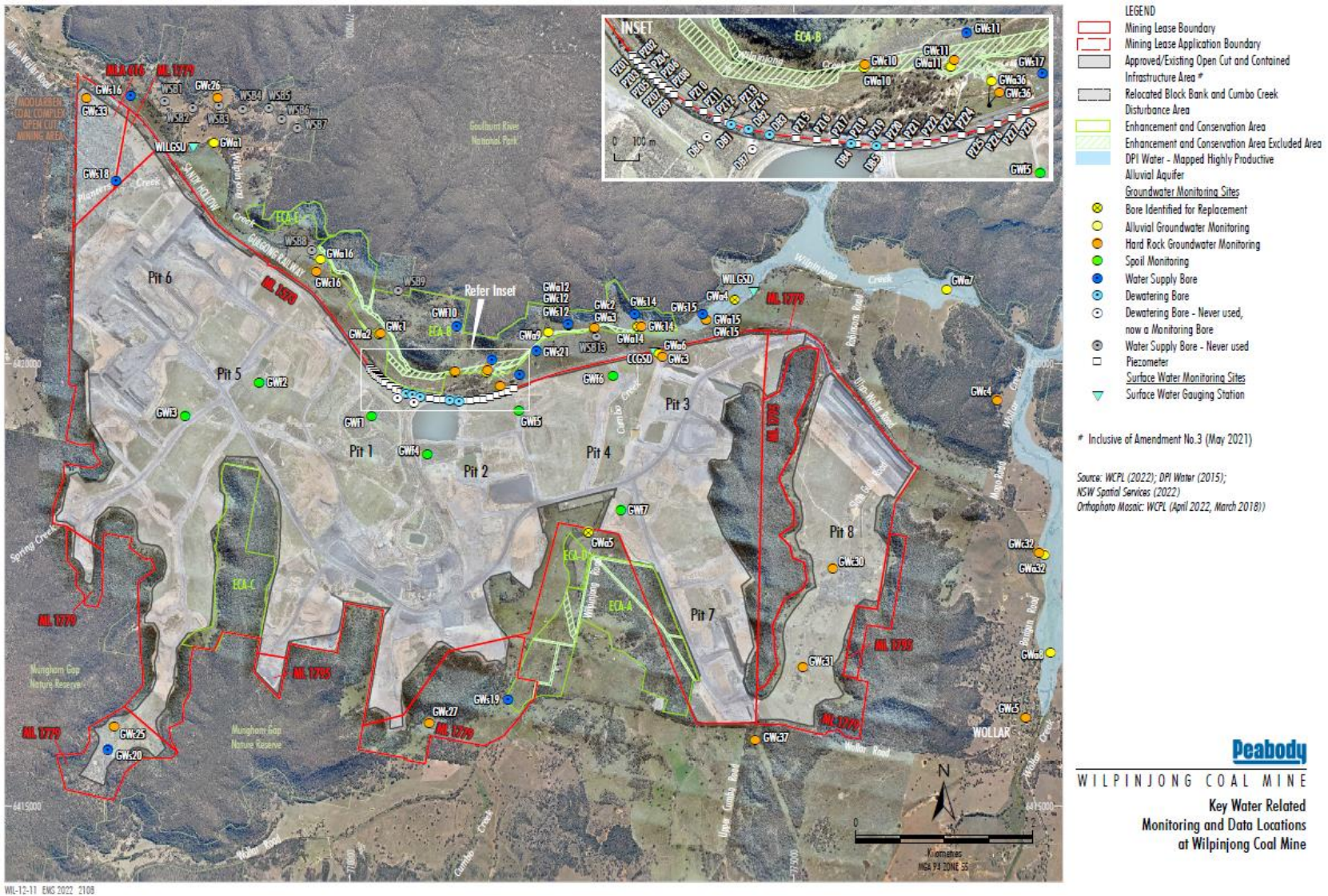
Summary of Groundwater Results 2016

Site	Water Level (mbgl)			pH			EC (uS/cm)		
	Min	Max	Ave	Min	Max	Ave	Min	Max	Ave
GWa1	4.85	5.20	4.94	0.00	0.00	0.00	0.00	0.00	0.00
GWa2	1.37	4.27	3.09	6.60	7.00	6.76	1480.00	1910.00	1621.82
GWa3	3.62	5.12	4.22	7.00	7.40	7.17	500.00	2580.00	1281.43
GWa4	4.02	4.89	4.56	7.00	7.20	7.10	3040.00	3850.00	3546.67
GWa5	2.54	4.33	3.68	7.20	7.60	7.40	8920.00	14200.00	11310.91
GWa6	1.04	2.44	1.62	7.50	7.80	7.63	6640.00	13600.00	9832.00
GWa7	3.25	4.87	4.12	7.00	7.80	7.26	12.83	10800.00	5788.21
GWa8	1.10	2.28	1.59	6.80	7.20	7.03	2080.00	2520.00	2234.55
GWa10	3.03	3.99	3.62	6.80	7.30	6.98	2660.00	3590.00	3350.83
GWa11	3.16	3.62	3.40	7.40	7.70	7.53	1700.00	3070.00	2289.17
GWa12	3.28	5.54	3.93	7.60	7.70	7.63	890.00	1250.00	1030.00
GWa14	1.53	1.53	1.53	7.80	7.80	7.80	790.00	790.00	790.00
GWa15	2.48	3.73	3.41	7.20	7.60	7.38	290.00	2910.00	2354.00
GWa16	0.00	0.00	0.00	0.00	0.00	0.00	0.00	0.00	0.00
GWa22	3.87	3.92	3.90	6.90	7.10	7.00	5340.00	5470.00	5405.00
GWa32	1.56	2.85	2.11	7.00	7.30	7.16	3740.00	5550.00	4255.00
GWa34	2.80	4.71	4.2275	4.10	6.50	5.25	190.00	6640.00	4740
GWc1	8.62	9.61	9.19	6.90	7.20	7.05	2050.00	3370.00	2762.73
GWc2	12.23	14.62	13.83	7.00	7.20	7.06	1240.00	1290.00	1260.91
GWc3	8.93	14.23	10.77	6.70	7.00	6.82	3810.00	4250.00	4044.55
GWc4	14.26	14.57	14.45	6.70	7.00	6.82	1980.00	2470.00	2348.00
GWc5	5.91	6.56	6.18	6.40	6.80	6.58	5480.00	5700.00	5582.73
GWc10	1.40	2.37	1.97	6.50	7.30	6.94	3580.00	4020.00	3847.50
GWc11	13.34	14.32	13.79	6.20	6.50	6.34	3470.00	3710.00	3573.33
GWc12	26.52	32.29	29.51	6.90	7.30	7.11	1180.00	4130.00	1842.73
GWc14	22.97	30.37	27.10	7.20	7.30	7.25	1080.00	1170.00	1107.27
GWc15	19.37	25.55	22.56	6.50	6.70	6.55	3180.00	3370.00	3266.36

Summary of Groundwater Results 2015

Site	Water Level (mbgl)			pH			EC (uS/cm)		
	Min	Max	Ave	Min	Max	Ave	Min	Max	Ave
GWa1	4.94	5.21	5.05	0.00	0.00	-	0.00	0.00	-
GWa2	3.78	4.20	4.01	6.70	6.90	6.81	1400.00	1510.00	1431.67
GWa3	4.88	5.45	5.22	6.90	7.20	7.03	2120.00	2640.00	2396.67
GWa4	3.80	13.67	5.08	6.50	7.20	6.92	2350.00	5260.00	4381.11
GWa5	3.24	4.19	3.67	7.00	7.50	7.23	9950.00	11070.00	10511.67
GWa6	2.47	2.79	2.72	7.50	7.60	7.55	8370.00	8830.00	8600.00
GWa7	4.66	5.21	4.95	7.00	7.30	7.05	12330.00	15270.00	13656.00
GWa8	1.42	2.25	1.72	6.80	7.10	6.95	2060.00	2290.00	2174.17
GWa10	3.43	4.18	3.87	6.80	7.00	6.90	3470.00	3840.00	3575.83
GWa11	3.16	4.07	3.57	7.40	7.70	7.53	2060.00	3920.00	2789.17
GWa12	5.04	5.85	5.62	0.00	0.00	-	0.00	0.00	0.00
GWa14	4.54	5.01	4.85	0.00	0.00	-	0.00	0.00	-
GWa15	3.54	3.69	3.62	7.20	7.40	7.30	2860.00	2960.00	2934.00
GWc1	9.62	10.12	9.85	6.90	7.10	7.03	2200.00	3320.00	2682.50
GWc2	12.47	14.51	13.61	7.00	7.30	7.13	1180.00	1300.00	1240.83
GWc3	9.88	10.73	10.27	6.70	6.80	6.74	4190.00	4630.00	4511.67
GWc4	13.23	14.09	13.83	6.40	6.70	6.56	2240.00	2480.00	2380.83
GWc5	5.81	6.47	6.08	6.40	6.70	6.56	5520.00	5770.00	5659.17
GWc10	2.66	5.04	3.98	6.90	7.50	7.22	3730.00	4020.00	3910.83
GWc11	13.49	14.80	14.20	6.10	6.40	6.23	3670.00	3820.00	3761.67
GWc12	24.28	32.33	27.79	7.10	7.60	7.24	1400.00	1700.00	1568.33
GWc14	19.64	29.58	24.56	7.20	7.40	7.26	1120.00	1170.00	1148.33
GWc15	15.32	23.11	19.53	6.50	6.70	6.55	3270.00	3370.00	3321.67

Groundwater Monitoring Locations



WL-12-11_EMS 2022_2108

2024 Groundwater Monitoring Data

a Sample Location	Sampling Date	Sampling Time	Aluminium mg/L	Arsenic mg/L	Arsenic mg/L	Barium mg/L	Bicarbonate Alkalinity as CaCO3 mg/L	Calcium - Dissolved mg/L	Carbonate Alkalinity as CaCO3 mg/L	Chloride mg/L	Conductivity @ 25oC µS/cm	Copper mg/L	Data Download	Depth to Standpipe m	Dissolved Oxygen - Dissolved mg/L	Free Carbon Dioxide as CO2 mg/L	Hydroxide Alkalinity as CaCO3 mg/L	Ionic Balance %	Iron mg/L	Lead mg/L	Magnesium - Dissolved mg/L	Manganese mg/L	Molybdenum mg/L	Nickel mg/L	No Sample 1=Dry 2=Inadequate Vol 3=Not Stabilised 4=No access	pH pH Unit	pH Redox pH Unit	Potassium - Dissolved mg/L	Redox Potential mV	Selenium mg/L	Sodium - Dissolved mg/L	Strontium mg/L	Sulfate as SO4 - Turbidimetric mg/L	Temperature °C	Total Alkalinity as CaCO3 mg/L	Total Anions meq/L	Total Cations meq/L	Total Dissolved Solids @180°C - Dissolved mg/L	Zinc mg/L		
GWA1	18-Jan-2024	131 2												Dry											1																
GWA2	23-Jan-2024	150 0	<0.0 1	3.27	0.004	0.06	84	27	<1	138	952	0.005		2.98	7.4	21	<1	4.2 6	5.63	0.004	35	0.66 5	<0.00 1	0.005		6.6	7.1 2	7	115	<0.0 1	102	0.32	195	20	84	9.6 3	8.8 4	589	0.01		
GWA3	11-Jan-2024	134 3												Dry											2																
GWA4	11-Jan-2024	105 5	<0.0 1	0.94	0.007	0.04 9	387	79	<1	186	1510	<0.00 1		2.55	7	18	<1	1.1 5	5.32	<0.00 1	51	0.38 6	<0.00 1	0.01		6.9	6.9 8	18	195	<0.0 1	185	0.52 4	158	19.5 5	387	16.3 3	16.6 6	850	<0.00 5		
GWA5	05-Jan-2024	105 5	<0.0 1	0.12	0.002	0.04	732	41 3	<1	853	8450	0.004		2.06	7.6	23	<1	4.7 8	0.24	<0.00 1	60 2	0.09	0.002	0.009		7.3	7.3	26	102	<0.0 1	894	4.42	394 0	20.6 6	732	121	110	7840	0.032		
GWA6	05-Jan-2024	133 3	<0.0 1	0.09	0.001	0.08 2	530	17 4	<1	348	4230	0.004		0.75	7.2	11	<1	3.4 8	0.61	<0.00 1	19 7	0.58 1	0.002	0.011		7.2	7.3 5	23	114	<0.0 1	517	1.82	149 0	21	530	51.4 4	48	3330	0.008		
GWA7	04-Jan-2024	103 3												Dry											2																
GWA8	04-Jan-2024	130 5	<0.0 1	2.08	0.002	0.08 5	355	79	<1	235	1850	0.005		1.57	6.4	8	<1	5.3 7	2.62	0.01	72	9.46	<0.00 1	0.018		7.1	7.2 7	10	100	<0.0 1	189	0.87 2	322	19	355	20.4 4	18.3 3	1270	0.018		
GWC1	23-Jan-2024	143 2	<0.0 1	0.08	<0.00 1	0.03 4	264	62	<1	291	1860	0.002		9.23	6.8	16	<1	3.4 8	0.15	<0.00 1	53	1.97	<0.00 1	0.004		7	7.7 7	13	82.8 8	<0.0 1	236	0.72 8	282	18	264	19.4 4	18	1200	0.006		
GWC2	11-Jan-2024	133 1	<0.0 1	<0.0 1	<0.00 1	0.29 9	518	63	<1	115	1250	<0.00 1		3.74	7.2	12	<1	0.9 9	1.79	<0.00 1	26	0.11	<0.00 1	<0.00 1		7.2	7.2 3	25	192	<0.0 1	186	0.48 3	7	21	518	13.7 7	14	732	<0.00 5		
GWC3	05-Jan-2024	135 8	<0.0 1	0.01	<0.00 1	0.02	598	13 2	<1	345	3590	<0.00 1		1.77	7.1	15	<1	1.5 5	0.48	<0.00 1	14 3	0.39 9	0.005	0.085		7	7.1 8	39	157	<0.0 1	462	1.42	913	20.5 5	598	40.7 7	39.4 4	2490	<0.00 5		
GWC4	04-Jan-2024	111 9	<0.0 1	0.03	<0.00 1	0.03 8	641	17 2	<1	332	2450	0.002		13.5	6.7	30	<1	3.6 6	2.16	<0.00 1	80	0.04 9	<0.00 1	0.001		6.6	6.8 5	48	120	<0.0 1	208	1.91	250	21.5 5	641	27.4 4	25.4 4	1590	0.01		
GWC5	04-Jan-2024	133 5	<0.0 1	0.06	<0.00 1	0.14 3	205 0	25 8	<1	513	5380	0.003		5.21	5.6	63 5	<1	1.7 4	0.15	0.001	13 4	1.05	<0.00 1	0.022		6.5	6.6 1	86	136	<0.0 1	829	7.41	429	18.5 5	205 0	64.4 4	62.2 2	3610	0.017		
GWA10	24-Jan-2024	140 9	<0.0 1	0.65	0.002	0.03 3	374	12 3	<1	483	2910	0.006	24/01/2024	3.42	7.5	12	<1	0.8 6	2.08	<0.00 1	10 5	1.08	<0.00 1	0.004		7.1	7.2 3	1	119	<0.0 1	396	0.82	499	20.5 5	374	31.5 5	32	2280	<0.00 5		
GWC10	24-Jan-2024	134 4		0.04	<0.00 1	0.04 1	366	21 0	<1	376	3770	0.004		3.27	7	16	<1	0.7	1.73	<0.00 1	12 8	0.22 2	<0.00 1	0.004		6.9	7.0 6	32	125	<0.0 1	508	2.1	122 0	20.5 5	366	43.3 3	43.9 9	3330	<0.00 5		
GWA11	24-Jan-2024	125 5	<0.0 1	3.24	<0.00 1	0.04	481	40	<1	66	1300	0.006		3.56	6.4	7	<1	6.2 9	3.73	0.002	33	0.19 8	<0.00 1	0.008		7.5	7.6 6	12	106	<0.0 1	225	0.48	76	20.5 5	481	13	14.8 8	985	0.01		
GWC11	24-Jan-2024	123 5		0.14	<0.00 1	0.03	228	64	<1	236	2080	0.003	24/01/2024	7.64	6.4	34	<1	0.3 4	12.8	0.001	65	1	<0.00 1	0.006		6.4	6.5 6	19	137	<0.0 1	292	0.66	498	19	228	21.6 6	21.7 7	1570	0.02		
GWA12	11-Jan-2024	131 3												Dry											1																
GWC12	11-Jan-2024	130 5		0.02	<0.00 1	0.06 8	707	11 2	<1	185	2600	0.004	11/01/2024	7.62	6.5	12	<1	0.3	1.08	<0.00 1	47	0.24 1	0.001	0.002		7.4	7.4 6	26	75.1 1	<0.0 1	441	1.18	487	19.5 5	707	29.5 5	29.3 3	1740	<0.00 5		
GWA14	11-Jan-2024	120 2												Dry											1																
GWC14	11-Jan-2024	123 0		0.11	<0.00 1	0.05 5	437	27 3	<1	222	3450	0.004		3.13	6.8	8	<1	0.6 6	1.3	<0.00 1	11 9	0.21 1	0.002	0.018		7.3	7.3 1	34	81.4 4	<0.0 1	402	2.39	126 0	19.5 5	437	41.2 2	41.8 8	2890	0.009		
GWA15	11-Jan-2024	111 7												Dry											2																
GWC15	11-Jan-2024	114 5		0.02	<0.00 1	0.04 5	476	34 3	<1	288	4010	0.002		4.27	7	12	<1	1.7 4	1.78	0.001	15 6	0.19 4	<0.00 1	0.002		7	6.9 7	40	84.6 6	<0.0 1	461	3.51	152 0	19	476	49.3 3	51	3480	<0.00 5		
GWC33	23-Jan-2024	101 1											23/01/2024	Dry											3																
GWC26	24-Jan-2024	105 2		0.3	<0.00 1	0.27 9	531	29	<1	148	1480	0.022	24/01/2024	52.7 8	7.1	11	<1	2.2 9	1.46	0.005	17	0.05 7	<0.00 1	0.003		7.3	7.5 3	16	128	<0.0 1	293	0.44 3	24	21	531	15.3 3	16	1020	0.035		
GWA16	18-Jan-2024	142 2												Dry											2																
GWC16	18-Jan-2024	135 6		0.07	<0.00 1	0.11 8	627	77	<1	368	2360	<0.00 1		31.1 5	7.7	18	<1	2.3 8	0.78	0.001	38	0.05 9	<0.00 1	<0.00 1		7.2	7.3	22	79.1 1	<0.0 1	382	0.82 2	116	22	627	25.3 3	24.1 1	1540	0.006		
GWC30	05-Jan-2024	122 6		0.05	<0.00 1	0.04 3	558	19 8	<1	601	3140	0.012	05/01/2024	31.8 2	7.4	27	<1	4.4 6	3.25	<0.00 1	15 6	0.17 7	<0.00 1	0.002		6.7	6.7 9	46	193	<0.0 1	182	2.36	321	21	558	34.8 8	31.8 8	2080	0.011		

a Sample Location	Sampling Date	Sampling Time	Aluminium mg/L	Arsenic mg/L	Arsenic mg/L	Barium mg/L	Bicarbonate Alkalinity as CaCO3 mg/L	Calcium - Dissolved mg/L	Carbonate Alkalinity as CaCO3 mg/L	Chloride mg/L	Conductivity @ 25oC µS/cm	Copper mg/L	Data Download	Depth to Standpipe m	Dissolved Oxygen - Dissolved mg/L	Free Carbon Dioxide as CO2 mg/L	Hydroxide Alkalinity as CaCO3 mg/L	Ionic Balance %	Iron mg/L	Lead mg/L	Magnesium - Dissolved mg/L	Manganese mg/L	Molybdenum mg/L	Nickel mg/L	No Sample 1=Dry 2=Inadequate Vol 3=Not Stabilised 4=No access	pH pH Unit	pH Redox pH Unit	Potassium - Dissolved mg/L	Redox Potential mV	Selenium mg/L	Sodium - Dissolved mg/L	Strontium mg/L	Sulfate as SO4 - Turbidimetric mg/L	Temperature °C	Total Alkalinity as CaCO3 mg/L	Total Anions meq/L	Total Cations meq/L	Total Dissolved Solids @180°C - Dissolved mg/L	Zinc mg/L		
GWC31	05-Jan-2024	125 3												Dry											2																
GWc37	05-Jan-2024	114 2		0.3	0.019	0.02 6	186	12 0	<1	177	2440	0.006		25.0 6	6.8	19	<1	1.4	5.46	0.001	10 2	1.15	<0.00 1	0.011		6.2	6.4 5	50	27. 2	<0.0 1	240	1.36	871	21	186		26. 8	26. 1	1740	0.042	
GWC27	05-Jan-2024	100 7		0.63	0.003	0.04 6	<1	16	<1	324	1580	0.051	05/01/2024	15.2 1	7.1	<1	<1	6.4 2	1.98	0.006	27	2.54	<0.00 1	0.029		4	3.9 7	31	366	<0.0 1	212	0.14 7	273	19. 5	<1	14. 8	13	954	0.362		
GWA32	04-Jan-2024	121 0		0.01	<0.00 1	0.03 6	596	10 6	<1	674	3440	0.003	04/01/2024	1.9	8.1	9	<1	5.9 2	<0.0 5	<0.00 1	13 6	0.14 3	0.004	0.002		7.3	7.2 7	18	204	<0.0 1	375	1.64	313	21. 5	596	37. 4	33. 2	2270	0.006		
GWC32	04-Jan-2024	123 4		0.03	<0.00 1	0.03 4	137 0	14 1	<1	327	3520	0.004	04/01/2024	4.53	6	74	<1	5.0 3	1.77	<0.00 1	10 4	0.06 8	<0.00 1	0.113		6.5	6.7 3	42	214	<0.0 1	500	4.51	283	20	137 0	42. 5	38. 4	2260	0.01		
GWA34	04-Jan-2024	143 0		1.98	0.001	0.03	270	37	<1	394	3250	0.059	04/01/2024	3.76	8	10	<1	68. 8	2.95	<0.00 1	39	0.39 4	0.002	0.068		6.6	6.8	<1	95. 3	<0.0 1	48	1.41	106 0	20. 5	270	38. 6	7.1 4	2720	0.145		
GWC34	04-Jan-2024	144 3												Dry											2																
GWA36	11-Jan-2024	142 0												Dry											2																
GWc36	11-Jan-2024	141 0		0.03	<0.00 1	0.02 8	292	15 5	<1	340	3780	<0.00 1		9.42	7.1	25	<1	1.0 1	24.7	<0.00 1	15 8	2.68	0.002	0.012		6.5	6.5	37	25. 5	<0.0 1	513	1.55	133 0	21	292	43. 1	44	3030	0.022		
GWC25	30-Jan-2024	135 7		1.25	0.002	0.13	256	40	<1	243	1350	0.01	30/01/2024	25.4 2	6.4	39	<1	1.0 3	1.27	0.005	58	0.35 5	<0.00 1	0.019		6.5	6.7 6	8	114	<0.0 1	167	0.49 8	95	21. 5	256	13. 9	14. 2	782	<0.00 5		
PZ13	18-Jan-2024	123 5												Dry											2																
PZ20	30-Jan-2024	114 7		3.61	0.002	0.03 6	397	34	<1	29	913	0.008		2.13	6.7	8	<1	2.4 2	2.43	0.003	39	0.80 6	0.001	0.01		7.5	7.5 9	17	81. 1	<0.0 1	121	0.36 6	65	22. 5	397	10. 1	10. 6	626	0.017		
PZ21	30-Jan-2024	121 9		4.83	0.003	0.02 5	338	19	<1	20	792	0.007		3.52	6.2	5	<1	2.6 4	2.64	0.002	17	0.30 9	0.002	0.008		7.7	7.8 2	8	116	<0.0 1	151	0.21 8	64	20	338	8.6 5	9.1 2	536	0.016		
PZ26	30-Jan-2024	112 1												Dry											1																
GWF1	30-Jan-2024	130 6												Dry											2																
GWF2	30-Jan-2024	150 5																							1																
GWF3	30-Jan-2024	143 5		0.91	<0.00 1	0.08 8	749	22 0	<1	370	4170	0.006		18.3 6	6	57	<1	0.4 1	2.37	0.003	32 9	1.72	0.002	0.011		6.7	6.8 7	39	133	<0.0 1	365	2.06	144 0	23	749	55. 4	54. 9	3630	0.184		
GWF4	30-Jan-2024	124 0												Dry											1																
GWF5	30-Jan-2024	111 6												Dry											1																
GWF7	30-Jan-2024	150 5																							1																
Barologger Office	30-Jan-2024	150 0											30/01/2024																												
GWA1	22-Feb-2024	112 5												Dry											1																
GWA2	08-Feb-2024	130 9	<0.0 1	1.55	0.001	0.04 4	93	26	<1	132	888	0.001		3.1	7.8	15	<1	1.0 8	2.32	0.001	36	0.34 7	<0.00 1	0.003		6.4	6.5 7	8	92. 2	<0.0 1	117	0.27 1	181	19	93	9.3 5	9.5 5	626	<0.00 5		
GWA3	15-Feb-2024	143 2												Dry											2																
GWA4	15-Feb-2024	115 0	<0.0 1	0.32	0.008	0.06 2	416	84	<1	202	1570	<0.00 1		2.52	7.2	25	<1	0.4 8	4.53	<0.00 1	57	0.43 2	<0.00 1	0.011		7	6.9 3	19	118	<0.0 1	190	0.70 5	166	20	416	17. 5	17. 6	973	<0.00 5		
GWA5	21-Feb-2024	113 3	<0.0 1	0.15	0.002	0.04 4	725	55 4	<1	131 0	1060 0	0.004		2.07	6.5	38	<1	2.9 7	0.27	<0.00 1	80 6	0.36 7	0.009	0.026		7.2	7.3 5	33	101	<0.0 1	131 0	5.7	440 0	21	725	143	152	2140 0	0.044		
GWA6	09-Feb-2024	125 7	<0.0 1	0.04	0.002	0.04 6	575	17 8	<1	314	3770	<0.00 1		0.97	7.8	15	<1	2.5 4	1.24	<0.00 1	21 5	0.23 2	0.001	0.003		7.2	7.2 6	28	121	<0.0 1	474	1.69	121 0	21. 5	575	45. 5	47. 9	3890	<0.00 5		
GWA7	09-Feb-2024	121 5												Dry											2																
GWA8	21-Feb-2024	144 0	<0.0 1	14.4	0.003	0.14 2	309	82	<1	231	1780	0.018		1.65	5.9	30	<1	3.7 1	11.9	0.015	75	8.33	0.001	0.032		7.1	7.1 9	11	97. 5	<0.0 1	211	0.86 4	270	20	309	18. 3	19. 7	1220	0.051		

a Sample Location	Sampling Date	Sampling Time	Aluminium mg/L	Arsenic mg/L	Arsenic mg/L	Barium mg/L	Bicarbonate Alkalinity as CaCO3 mg/L	Calcium - Dissolved mg/L	Carbonate Alkalinity as CaCO3 mg/L	Chloride mg/L	Conductivity @ 25oC µS/cm	Copper mg/L	Data Download	Depth to Standpipe m	Dissolved Oxygen - Dissolved mg/L	Free Carbon Dioxide as CO2 mg/L	Hydroxide Alkalinity as CaCO3 mg/L	Ionic Balance %	Iron mg/L	Lead mg/L	Magnesium - Dissolved mg/L	Manganese mg/L	Molybdenum mg/L	Nickel mg/L	No Sample 1=Dry 2=Inadequate Vol 3=Not Stabilised 4=No access	pH pH Unit	pH Redox pH Unit	Potassium - Dissolved mg/L	Redox Potential mV	Selenium mg/L	Sodium - Dissolved mg/L	Strontium mg/L	Sulfate as SO4 - Turbidimetric mg/L	Temperature °C	Total Alkalinity as CaCO3 mg/L	Total Anions meq/L	Total Cations meq/L	Total Dissolved Solids @180°C - Dissolved mg/L	Zinc mg/L
GWC1	08-Feb-2024	132 9	<0.0 1	0.04	<0.00 1	0.03 5	298	78	<1	327	1980	<0.00 1		9.48	8	13	<1	0.4 6	0.08	<0.00 1	64	1.43	<0.00 1	0.005		7	7.0 7	16	124	<0.0 1	279	0.76 8	304	17	298	21. 5	21. 7	1360	<0.00 5
GWC2	15-Feb-2024	144 5	<0.0 1	0.02	<0.00 1	0.33 8	515	62	<1	105	1230	<0.00 1		3.77	6.4	14	<1	3.2 2	2.01	<0.00 1	27	0.11 5	<0.00 1	0.001		7.2	7.2 1	26	118	<0.0 1	190	0.58 1	5	20. 5	515	13. 4	14. 2	964	<0.00 5
GWC3	09-Feb-2024	131 7	<0.0 1	0.01	<0.00 1	0.01 8	568	12 9	<1	306	3220	<0.00 1		1.52	7.8	19	<1	0.0 5	0.17	<0.00 1	12 8	0.33 8	0.004	0.07		7	7.1	39	131	<0.0 1	454	1.19	850	20. 5	568	37. 7	37. 7	2620	<0.00 5
GWC4	09-Feb-2024	113 0	<0.0 1	<0.0 1	<0.00 1	0.03 6	638	17 7	<1	301	2330	0.001		13.5 3	7.9	62	<1	0.1	3.56	<0.00 1	82	0.03 5	<0.00 1	<0.00 1		6.6	6.6 7	51	140	<0.0 1	221	1.85	250	21	638	26. 4	26. 5	1680	0.006
GWC5	21-Feb-2024	140 4	<0.0 1	0.01	<0.00 1	0.13	213 0	28 4	<1	481	5350	<0.00 1		5.28	5.3	36 2	<1	2.7	0.2	<0.00 1	14 8	0.94 2	<0.00 1	0.021		6.5	6.5 3	93	112	<0.0 1	911	7.42	415	19. 5	213 0	64. 8	68. 4	3640	0.016
GWA10	22-Feb-2024	132 0	<0.0 1	0.58	0.003	0.03 6	355	12 0	<1	474	2950	0.008	22/02/2024	3.44	7.3	21	<1	0.7 6	2.32	<0.00 1	10 2	1.25	<0.00 1	0.004		7.1	7.0 1	1	117	<0.0 1	387	0.88 9	495	21	355	30. 8	31. 2	2100	<0.00 5
GWC10	22-Feb-2024	134 8	<0.0 1	<0.00 1	<0.00 1	0.03 9	348	23 6	<1	371	3820	<0.00 1	22/02/2024	3.46	7.9	32	<1	3.5 7	1.33	<0.00 1	12 6	0.23 2	<0.00 1	0.001		6.9	6.7 9	33	125	<0.0 1	503	2.13	117 0	22	348	41. 8	44. 9	3060	<0.00 5
GWA11	22-Feb-2024	120 7	<0.0 1	4.38	0.001	0.04 8	436	38	<1	82	1330	0.006		3.54	7.7	11	<1	4.8	4.05	0.003	32	0.22 9	<0.00 1	0.009		7.5	7.4 5	28	114	<0.0 1	200	0.48 7	79	20. 5	436	12. 7	13. 9	834	0.009
GWC11	22-Feb-2024	124 5		0.1	<0.00 1	0.02 3	215	76	<1	244	2150	<0.00 1	22/02/2024	7.73	6.9	64	<1	2.8 3	7.94	<0.00 1	68	1.08	<0.00 1	0.004		6.4	6.2 4	22	11. 9	<0.0 1	300	0.63 2	507	19	215	21. 7	23	1470	0.011
GWA12	15-Feb-2024	141 9												Dry											1														
GWC12	15-Feb-2024	140 9		0.05	<0.00 1	0.06 8	697	10 5	<1	185	2550	0.004	15/02/2024	7.57	7.3	16	<1	0.2 4	1.37	<0.00 1	51	0.24	<0.00 1	0.002		7.5	7.4 4	26	119	<0.0 1	436	0.96	470	19. 5	697	28. 9	29. 1	1980	<0.00 5
GWA14	15-Feb-2024	132 4												Dry											1														
GWC14	15-Feb-2024	131 6		0.02	<0.00 1	0.02 9	431	26 2	<1	225	3390	<0.00 1	15/02/2024	3.09	7	13	<1	5.7 2	1.86	<0.00 1	11 9	0.20 4	0.002	0.016		7.4	7.3	34	125	<0.0 1	397	2.05	149 0	20	431	46	41	2940	0.005
GWA15	15-Feb-2024	124 7												Dry											2														
GWC15	15-Feb-2024	123 3		0.04	<0.00 1	0.04 6	479	30 3	<1	286	3810	0.002	15/02/2024	4.31	6.7	21	<1	5.7 4	1.53	<0.00 1	14 5	0.18 1	<0.00 1	0.02		7	7.0 2	39	127	<0.0 1	442	2.91	170 0	18. 5	479	53	47. 3	3580	0.006
GWC33	08-Feb-2024	111 9											08/02/2024	Dry											3														
GWC26	22-Feb-2024	104 4		0.07	<0.00 1	0.20 9	500	30	<1	142	1500	0.007		52.8	6.8	21	<1	5.4 5	0.65	<0.00 1	17	0.05	<0.00 1	<0.00 1		7.2	7.1 1	17	43	<0.0 1	294	0.35 6	22	21	500	14. 4	16. 1	895	<0.00 5
GWA16	08-Feb-2024	123 6												3.03											2														
GWC16	08-Feb-2024	120 5		0.1	<0.00 1	0.10 8	655	70	<1	273	2160	<0.00 1	08/02/2024	30.9 6	8.4	15	<1	0.6 4	0.65	0.001	36	0.02 6	<0.00 1	<0.00 1		7.2	7.2 3	21	135	<0.0 1	366	0.69 7	88	20. 5	655	22. 6	22. 9	1470	<0.00 5
GWC30	21-Feb-2024	131 6		0.21	<0.00 1	0.06 6	500	20 9	<1	532	3060	0.052	21/02/2024	30.4 8	6.6	69	<1	0.5 3	4.98	0.002	14 2	0.24 2	<0.00 1	0.003		6.7	6.6 7	47	105	<0.0 1	177	2.35	305	21. 5	500	31. 3	31	2350	0.038
GWC31	21-Feb-2024	133 6												Dry											2														
GWC37	21-Feb-2024	122 2		0.63	0.034	0.03 6	163	12 0	<1	185	2460	0.005		25	6.3	82	<1	2.1 8	9.39	0.002	10 3	1.27	0.002	0.01		6.2	6.3	49	-3.7	<0.0 1	244	1.46	914	21	163	27. 5	26. 3	1860	0.042
GWC27	21-Feb-2024	102 7		0.67	0.004	0.06	<1	17	<1	305	1610	0.079	21/02/2024	15.3 4	6.6	<1	<1	1.6 5	2.06	0.007	28	2.92	<0.00 1	0.03		4	4.0 9	32	363	<0.0 1	220	0.12 6	259	19. 5	<1	14	13. 5	1050	0.373
GWA32	22-Feb-2024	143 0		0.01	<0.00 1	0.03 6	546	11 4	<1	639	3380	0.008	22/02/2024	2.69	7.4	20	<1	1.8 3	<0.0 5	<0.00 1	14 6	0.40 8	0.005	0.003		7.3	7.0 8	22	23. 1	<0.0 1	419	1.6	300	21. 5	546	35. 2	36. 5	2230	<0.00 5
GWC32	22-Feb-2024	150 4	<0.0 1	<0.00 1	<0.00 1	0.03 2	120 0	14 8	<1	323	3490	0.002		3.65	6.9	20 4	<1	4.3 9	1.62	<0.00 1	11 0	0.06 4	<0.00 1	<0.00 1		6.6	6.4 2	46	66. 9	<0.0 1	563	4.29	263	20	120 0	38. 6	42. 1	2340	<0.00 5
GWA34	09-Feb-2024	102 7		1.46	<0.00 1	0.02 8	234	16 7	<1	351	2930	0.018	09/02/2024	3.85	8.6	24	<1	1.4 6	0.5	<0.00 1	19 4	0.06 6	0.002	0.064		6.5	6.6 5	4	141	<0.0 1	237	1.3	919	20	234	33. 7	34. 7	2720	0.102
GWC34	09-Feb-2024	105 1		0.15	<0.00 1	0.08	156 0	83	<1	224	3990	0.016		19.8 5	7.7	53	<1	0.4 6	0.68	0.006	64	0.15 4	0.001	0.074		7	7.0 4	19	144	<0.0 1	856	5.2	484	19. 5	156 0	47. 6	47. 1	3140	0.044
GWA36	08-Feb-2024	135 5												Dry											2														
GWC36	08-Feb-2024	140 8		0.02	0.001	0.02 2	287	15 0	<1	332	3680	<0.00 1		9.58	7	42	<1	0.1 4	31	<0.00 1	15 8	2.34	0.002	0.012		6.5	6.5 7	36	12. 1	<0.0 1	484	1.22	132 0	19	287	42. 6	42. 5	3480	0.034

a Sample Location	Sampling Date	Sampling Time	Aluminium mg/L	Arsenic mg/L	Arsenic mg/L	Barium mg/L	Bicarbonate Alkalinity as CaCO3 mg/L	Calcium - Dissolved mg/L	Carbonate Alkalinity as CaCO3 mg/L	Chloride mg/L	Conductivity @ 25oC µS/cm	Copper mg/L	Data Download	Depth to Standpipe m	Dissolved Oxygen - Dissolved mg/L	Free Carbon Dioxide as CO2 mg/L	Hydroxide Alkalinity as CaCO3 mg/L	Ionic Balance %	Iron mg/L	Lead mg/L	Magnesium - Dissolved mg/L	Manganese mg/L	Molybdenum mg/L	Nickel mg/L	No Sample 1=Dry 2=Inadequate Vol 3=Not Stabilised 4=No access	pH pH Unit	pH Redox pH Unit	Potassium - Dissolved mg/L	Redox Potential mV	Selenium mg/L	Sodium - Dissolved mg/L	Strontium mg/L	Sulfate as SO4 - Turbidimetric mg/L	Temperature °C	Total Alkalinity as CaCO3 mg/L	Total Anions meq/L	Total Cations meq/L	Total Dissolved Solids @180°C - Dissolved mg/L	Zinc mg/L			
GWC25	28-Feb-2024	124 6		0.42	0.001	0.13 5	227	35	<1	250	1360	0.04	28/02/2024	25.7 3	6.5	81	<1	1.1 1	0.95	0.005	57	0.39 2	<0.00 1	0.019		6.5	6.4 6	9	152	<0.0 1	169	0.52	102	21	227	13. 7	14	810	0.006			
PZ13	08-Feb-2024	124 7												Dry											1																	
PZ20	28-Feb-2024	104 4		2.94	0.002	0.04 1	314	24	<1	26	840	0.007		2.12	6.2	16	<1	2.3 9	2.12	0.003	33	1.07	0.001	0.01		7.4	7.4 3	19	160	<0.0 1	109	0.35 9	82	22. 5	314	8.7 1	9.1 4	694	0.017			
PZ21	28-Feb-2024	112 1		2.56	0.003	0.02	317	19	<1	16	811	0.006		3.51	6	9	<1	7.9 1	1.4	0.001	16	0.35 4	0.002	0.006		7.7	7.7 2	8	137	<0.0 1	158	0.21 1	57	21	317	7.9 7	9.3 4	557	0.012			
PZ26	28-Feb-2024	101 2												Dry											1																	
GWF1	28-Feb-2024	120 3												Dry											2																	
GWF2	28-Feb-2024	150 0																							1																	
GWF3	28-Feb-2024	132 6		0.69	0.001	0.10 3	641	23 6	<1	400	4360	0.01		18.9 3	6	12 5	<1	6.9 5	2.27	0.005	35 2	1.82	0.002	0.015		6.7	6.7 2	46	159	<0.0 1	432	2.27	138 0	23. 5	641	52. 8	60. 7	3830	0.096			
GWF4	28-Feb-2024	114 0												Dry											1																	
GWF5	28-Feb-2024	100 2												Dry											1																	
GWF7	28-Feb-2024	150 0																							1																	
Barologger Office	28-Feb-2024	135 9											28/02/2024																													
GWA1	08-Mar-2024	125 5												Dry											1																	
GWA2	29-Feb-2024	110 4	<0.0 1	2.8	0.004	0.05 1	86	25	<1	148	918	0.001		3.21	7.5	15	<1	1.2 7	6.2	0.003	33	0.73 6	<0.00 1	0.006		6.6	6.5 1	8	243	<0.0 1	110	0.24 9	158	21. 5	86	9.1 8	8.9 5	628	<0.00 5			
GWA3	11-Mar-2024	124 0												Dry											2																	
GWA4	11-Mar-2024	100 5	<0.0 1	0.08	0.006	0.07 3	429	88	<1	237	1750	<0.00 1		2.53	6.8	18	<1	0.9	4.09	<0.00 1	59	0.42 4	<0.00 1	0.012		6.9	6.9 6	19	32. 8	<0.0 1	188	0.74 4	143	20	429	18. 2	17. 9	934	<0.00 5			
GWA5	29-Feb-2024	141 0	<0.0 1	0.26	0.001	0.07 7	715	60 4	<1	170 0	1150 0	<0.00 1		2.08	7.3	22	<1	0.9 8	0.36	<0.00 1	81 3	0.38 8	0.006	0.026		7.3	7.2 5	35	108	<0.0 1	136 0	5.82	441 0	23	715	154	157	1220 0	0.036			
GWA6	15-Mar-2024	120 7	<0.0 1	0.22	0.003	0.04 4	604	18 0	<1	327	3910	<0.00 1		1.2	6.7	21	<1	1.0 2	1.61	0.001	22 1	0.24 8	<0.00 1	0.003		7.2	7.3 9	26	135	<0.0 1	485	1.85	128 0	20	604	47. 9	48. 9	2860	0.013			
GWA7	29-Feb-2024	122 4												Dry											2																	
GWA8	15-Mar-2024	130 1	<0.0 1	1.81	0.001	0.07 5	338	77	<1	213	1710	0.008		1.65	6.6	23	<1	0.4 5	2.22	0.009	70	11	<0.00 1	0.015		7.1	7.1 9	9	145	<0.0 1	196	0.79 6	261	19. 5	338	18. 2	18. 4	940	0.019			
GWC1	29-Feb-2024	103 7	<0.0 1	<0.0 1	<0.00 1	0.04 8	367	12 1	<1	475	2750	<0.00 1		9.67	7.3	16	<1	0.1 7	<0.0 5	<0.00 1	85	1.18	<0.00 1	0.005		7.1	6.9 8	21	106	<0.0 1	367	1.14	418	19	367	29. 4	29. 5	2030	<0.00 5			
GWC2	11-Mar-2024	125 2	<0.0 1	0.01	0.001	0.33 3	519	60	<1	124	1280	<0.00 1		3.95	6.9	10	<1	2.3 9	1.78	<0.00 1	26	0.11 2	<0.00 1	0.002		7.3	7.4	25	22. 1	<0.0 1	173	0.58 2	4	21. 5	519	14	13. 3	718	<0.00 5			
GWC3	15-Mar-2024	122 5	<0.0 1	0.02	<0.00 1	0.01 9	602	13 7	<1	311	3390	<0.00 1		1.7	7	26	<1	0.4	0.56	<0.00 1	13 2	0.37 9	0.004	0.073		7.1	7.2 8	37	131	<0.0 1	475	1.29	904	20	602	39. 6	39. 3	2280	0.007			
GWC4	29-Feb-2024	131 4	<0.0 1	0.02	<0.00 1	0.03 2	574	18 8	<1	362	2450	<0.00 1		13.5	7	47	<1	1.8 5	2.74	<0.00 1	85	0.05 3	<0.00 1	<0.00 1		6.6	6.5 7	51	128	<0.0 1	224	1.78	228	23	574	26. 4	27. 4	1690	<0.00 5			
GWC5	18-Mar-2024	111 6	<0.0 1	<0.0 1	<0.00 1	0.13 5	219 0	37 1	<1	494	5400	<0.00 1		5.3	5.1	76 1	<1	6.1 1	0.3	<0.00 1	15 2	1.2	<0.00 1	0.019		6.5	6.6 5	86	59. 9	<0.0 1	939	6.52	377	18	219 0	65. 5	74. 1	3440	<0.00 5			
GWA10	15-Mar-2024	105 1	<0.0 1	0.4	0.003	0.03 7	404	12 2	<1	465	2960	0.009	15/03/2024	3.6	6.6	21	<1	1.7 2	2.28	<0.00 1	10 8	1.47	<0.00 1	0.004		7	7.2 2	1	128	<0.0 1	402	0.96 4	490	20	404	31. 4	32. 5	1880	0.005			
GWC10	15-Mar-2024	112 2		0.02	<0.00 1	0.04 1	392	22 0	<1	365	3830	0.003	15/03/2024	3.14	6.8	33	<1	1.4 7	2.54	<0.00 1	12 7	0.25 7	<0.00 1	0.004		6.9	7.0 2	36	140	<0.0 1	502	2.28	119 0	19. 5	392	42. 9	44. 2	2760	0.007			
GWA11	15-Mar-2024	956												Dry											2																	
GWC11	15-Mar-2024	101 7		0.1	<0.00 1	0.02 4	239	67	<1	251	2130	<0.00 1	15/03/2024	7.96	6.9	55	<1	0.7 6	9.61	<0.00 1	67	1.28	0.001	0.006		6.4	6.5 8	23	137	<0.0 1	304	0.69 9	503	17. 5	239	22. 3	22. 7	1350	0.018			
GWA12	11-Mar-2024	121 4												Dry											1																	

a Sample Location	Sampling Date	Sampling Time	Aluminium mg/L	Arsenic mg/L	Arsenic mg/L	Barium mg/L	Bicarbonate Alkalinity as CaCO3 mg/L	Calcium - Dissolved mg/L	Carbonate Alkalinity as CaCO3 mg/L	Chloride mg/L	Conductivity @ 25oC µS/cm	Copper mg/L	Data Download	Depth to Standpipe m	Dissolved Oxygen - Dissolved mg/L	Free Carbon Dioxide as CO2 mg/L	Hydroxide Alkalinity as CaCO3 mg/L	Ionic Balance %	Iron mg/L	Lead mg/L	Magnesium - Dissolved mg/L	Manganese mg/L	Molybdenum mg/L	Nickel mg/L	No Sample 1=Dry 2=Inadequate Vol 3=Not Stabilised 4=No access	pH pH Unit	pH Redox pH Unit	Potassium - Dissolved mg/L	Redox Potential mV	Selenium mg/L	Sodium - Dissolved mg/L	Strontium mg/L	Sulfate as SO4 - Turbidimetric mg/L	Temperature °C	Total Alkalinity as CaCO3 mg/L	Total Anions meq/L	Total Cations meq/L	Total Dissolved Solids @180°C - Dissolved mg/L	Zinc mg/L		
GWC12	11-Mar-2024	1208		0.02	<0.001	0.063	704	100	<1	196	2660	0.002	11/03/2024	8	7.1	11	<1	0.43	0.92	<0.001	51	0.23	0.001	<0.001		7.5	7.6	29	70.2	<0.001	449	0.915	486	19	704	29.7	29.4	1770	<0.005		
GWA14	11-Mar-2024	1133												Dry											1																
GWC14	11-Mar-2024	1130		0.02	<0.001	0.035	444	260	<1	254	3550	0.002	11/03/2024	3.45	6.6	9	<1	2.26	1.92	<0.001	121	0.199	0.002	0.012		7.4	7.58	38	68.1	<0.001	397	1.84	1120	20.5	444	39.4	41.2	2750	<0.005		
GWA15	11-Mar-2024	1031												Dry											2																
GWC15	11-Mar-2024	1047		0.02	<0.001	0.046	493	306	<1	289	3860	0.002	11/03/2024	4.55	7	16	<1	10	1.37	<0.001	137	0.159	<0.001	0.004		7	7.24	41	71	<0.001	442	2.52	973	19.5	493	38.3	46.8	3050	<0.005		
GWC33	08-Mar-2024	1411											08/03/2024	Dry											3																
GWC26	08-Mar-2024	1231		0.03	<0.001	0.213	566	30	<1	153	1500	0.006	08/03/2024	52.79	6.7	10	<1	1.71	0.56	<0.001	21	0.018	0.001	<0.001		7.3	7.22	17	39.1	<0.001	298	0.402	21	22	566	16.1	16.6	832	<0.005		
GWA16	08-Mar-2024	1123												Dry											2																
GWC16	08-Mar-2024	1101		0.06	<0.001	0.113	660	56	<1	332	2430	0.002	08/03/2024	30.77	6.7	14	<1	0.99	2.41	0.001	42	0.043	<0.001	<0.001		7.2	7.03	24	65.5	<0.001	404	0.916	114	22	660	24.9	24.4	1140	0.005		
GWC30	18-Mar-2024	1310		0.19	<0.001	0.054	575	230	<1	566	3080	0.025	18/03/2024	30.1	6.4	32	<1	0.41	1.18	<0.001	154	0.22	<0.001	0.003		6.7	6.77	52	65.1	<0.001	184	2.37	303	20	575	33.8	33.5	2040	0.013		
GWC31	18-Mar-2024	1332												Dry											2																
GWc37	18-Mar-2024	1404		0.58	0.027	0.033	187	127	<1	173	2460	<0.001		24.98	6	34	<1	1.64	5.57	0.001	108	1.2	0.001	0.011		6.2	6.39	51	70.1	<0.001	249	1.42	858	21	187	26.5	27.4	1730	0.037		
GWC27	18-Mar-2024	1450		0.6	0.002	0.043	<1	18	<1	310	1610	0.046	18/03/2024	15.4	6.6	<1	<1	0.97	1.38	0.005	30	2.97	<0.001	0.032		4	4.23	36	325	0.01	225	0.157	243	19.5	<1	13.8	14.1	947	0.375		
GWA32	18-Mar-2024	1006		0.01	<0.001	0.04	611	115	<1	600	3350	<0.001	18/03/2024	1.95	6.3	12	<1	1	<0.05	<0.001	145	0.587	0.004	0.003		7.2	7.33	22	105	<0.001	412	1.67	303	19	611	35.4	36.2	1950	<0.005		
GWC32	18-Mar-2024	1047		0.04	<0.001	0.038	1360	166	<1	310	3520	<0.001	18/03/2024	3.78	5.4	92	<1	1.27	1.7	<0.001	112	0.114	<0.001	<0.001		6.5	6.76	49	106	<0.001	544	4.59	261	18	1360	41.4	42.4	2160	<0.005		
GWA34	18-Mar-2024	1216		1.9	<0.001	0.028	286	182	<1	370	3150	0.027	18/03/2024	3.86	7.8	13	<1	4.05	0.89	<0.001	201	0.059	0.002	0.045		6.6	6.86	6	129	0.01	258	1.51	863	20.5	286	34.1	37	2400	0.063		
GWC34	18-Mar-2024	1216												Dry											2																
GWa36	29-Feb-2024	1134												Dry											2																
GWc36	29-Feb-2024	1146		0.16	<0.001	0.022	258	160	<1	370	3900	<0.001		9.41	6.6	44	<1	3.09	20.1	<0.001	154	2.02	0.002	0.012		6.6	6.45	37	20.6	<0.001	516	1.25	1240	21	258	41.4	44	3440	0.022		
GWC25	27-Mar-2024	1212		0.22	<0.001	0.105	260	39	<1	240	1360	0.046	27/03/2024	25.92	8.8	26	<1	0.06	0.35	0.001	56	0.073	<0.001	0.017		6.7	7.31	8	134	<0.001	167	0.447	98	20	260	14	14	730	<0.005		
PZ13	11-Mar-2024	1322												Dry											1																
PZ20	27-Mar-2024	1026		1.94	0.001	0.036	446	39	<1	30	996	0.006		2.32	7	11	<1	1.7	1.34	<0.001	43	0.668	<0.001	0.005		7.4	7.95	19	112	<0.001	124	0.396	59	21	446	11	11.4	539	0.011		
PZ21	27-Mar-2024	1100		1.63	0.002	0.02	375	18	<1	20	837	0.004		3.74	7	6	<1	3.79	1.36	0.002	17	0.449	0.002	0.006		7.6	8.17	8	96.9	<0.001	164	0.194	42	20	375	8.93	9.64	538	0.014		
PZ26	27-Mar-2024	955												Dry											1																
GWF1	27-Mar-2024	1300																							1																
GWF2	27-Mar-2024	1300																							1																
GWF3	27-Mar-2024	1253		0.42	<0.001	0.086	701	220	<1	468	4490	0.005		19.26	7.5	61	<1	0.32	1.12	0.003	318	1.8	0.001	0.012		6.6	7.02	40	120	<0.001	424	1.98	1430	22	701	57	56.6	3530	0.036		
GWF4	27-Mar-2024	1300																							1																
GWF5	27-Mar-2024	942												Dry											1																

a Sample Location	Sampling Date	Sampling Time	Aluminium mg/L	Arsenic mg/L	Arsenic mg/L	Barium mg/L	Bicarbonate Alkalinity as CaCO3 mg/L	Calcium - Dissolved mg/L	Carbonate Alkalinity as CaCO3 mg/L	Chloride mg/L	Conductivity @ 25oC µS/cm	Copper mg/L	Data Download	Depth to Standpipe m	Dissolved Oxygen - Dissolved mg/L	Free Carbon Dioxide as CO2 mg/L	Hydroxide Alkalinity as CaCO3 mg/L	Ionic Balance %	Iron mg/L	Lead mg/L	Magnesium - Dissolved mg/L	Manganese mg/L	Molybdenum mg/L	Nickel mg/L	No Sample 1=Dry 2=Inadequate Vol 3=Not Stabilised 4=No access	pH pH Unit	pH Redox pH Unit	Potassium - Dissolved mg/L	Redox Potential mV	Selenium mg/L	Sodium - Dissolved mg/L	Strontium mg/L	Sulfate as SO4 - Turbidimetric mg/L	Temperature °C	Total Alkalinity as CaCO3 mg/L	Total Anions meq/L	Total Cations meq/L	Total Dissolved Solids @180°C - Dissolved mg/L	Zinc mg/L		
GWF7	27-Mar-2024	1300																						1																	
Barologger Office	27-Mar-2024	1324											27/03/2024																												
GWA1	10-Apr-2024	1121												Dry										1																	
GWA2	05-Apr-2024	1422	<0.01	0.22	0.002	0.041	109	25	<1	116	862	<0.001		3.43	7	16	<1	1.21	2.28	<0.001	28	0.486	<0.001	0.002		6.5	6.58	8	180	<0.01	106	0.252	150	18.5	109	8.57	8.37	569	<0.005		
GWA3	19-Apr-2024	1248												Dry										2																	
GWA4	19-Apr-2024	1004	<0.01	0.11	0.008	0.054	427	79	<1	188	1660	0.002		2.52	6.8	9	<1	3.43	4.91	<0.001	53	0.38	<0.001	0.01		6.9	7.06	20	167	<0.01	164	0.681	156	20	427	17.1	15.9	914	0.006		
GWA5	10-Apr-2024	1601	<0.01	0.07	0.002	0.046	779	590	<1	1560	12000	<0.001		2.17	7.1	24	<1	2.77	0.34	<0.001	860	0.406	0.011	0.032		7.3	7.38	36	149	<0.01	1490	5.68	4680	20	779	157	166	10800	0.043		
GWA6	19-Apr-2024	1332	<0.01	0.37	0.002	0.062	589	173	<1	352	4270	0.002		1.07	7.1	7	<1	7.02	1.12	<0.001	194	0.298	<0.001	0.003		7.3	7.44	23	145	<0.01	478	1.71	1500	18	589	52.9	46	3260	0.006		
GWA7	10-Apr-2024	1400												Dry										2																	
GWA8	16-Apr-2024	1405	0.01	15.5	0.003	0.119	317	68	<1	204	1640	0.016		1.46	6	10	<1	0.67	11.9	0.012	71	9	<0.001	0.028		7.1	7.17	10	330	0.01	166	0.802	233	19	317	16.9	16.7	940	0.047		
GWC1	05-Apr-2024	1402	<0.01	<0.01	<0.001	0.066	495	186	<1	499	3220	<0.001		9.56	6.7	24	<1	8.2	<0.005	<0.001	110	0.994	<0.001	0.004		7	7.03	27	191	<0.01	484	1.51	482	16.5	495	34	40.1	1940	<0.005		
GWC2	19-Apr-2024	1237	<0.01	<0.01	<0.001	0.31	513	58	<1	113	1270	<0.001		3.22	6.9	6	<1	6.06	1.3	<0.001	23	0.106	<0.001	<0.001		7.2	7.39	26	172	<0.01	150	0.551	4	20	513	13.5	12	694	0.005		
GWC3	19-Apr-2024	1401	<0.01	<0.01	<0.001	0.021	588	132	<1	269	3450	<0.001		1.66	7.6	9	<1	3.31	0.16	<0.001	118	0.41	0.004	0.094		7.1	7.24	43	186	<0.01	383	1.35	819	18.5	588	36.4	34	2360	0.006		
GWC4	10-Apr-2024	1447	<0.01	<0.01	<0.001	0.053	641	186	<1	322	2430	<0.001		13.49	7.2	69	<1	1.69	3.19	<0.001	81	0.043	<0.001	<0.001		6.7	6.83	50	135	<0.01	224	1.86	201	19.5	641	26.1	27	1450	0.005		
GWC5	16-Apr-2024	1332	<0.01	0.02	<0.001	0.134	2220	283	<1	474	5310	0.004		5.25	5	613	<1	4.34	0.58	0.002	130	1	<0.001	0.022		6.5	6.63	95	337	<0.01	768	8.18	405	19.5	2220	66.2	60.6	3490	0.022		
GWA10	23-Apr-2024	1145	<0.01	0.18	0.003	0.036	406	122	<1	458	2930	0.007	23/04/2024	3.52	6.8	7	<1	4.2	1.41	<0.001	93	1.24	<0.001	0.005		7.1	7.27	2	187	<0.01	373	1.03	558	19.5	406	32.6	30	1940	0.006		
GWC10	23-Apr-2024	1222		0.01	<0.001	0.034	391	227	<1	350	3790	0.002		3.26	6.8	8	<1	1.29	1.33	<0.001	122	0.227	<0.001	0.004		6.9	7.12	34	185	<0.01	468	1.88	1250	20.5	391	43.7	42.6	2870	<0.005		
GWA11	23-Apr-2024	1054												Dry										2																	
GWC11	23-Apr-2024	1116		0.06	<0.001	0.021	241	70	<1	232	2090	0.001	23/04/2024	7.23	6.8	14	<1	3.87	4.92	<0.001	62	1.04	<0.001	0.007		6.5	6.68	20	-8.7	<0.01	264	0.561	523	18.5	241	22.2	20.6	1340	0.013		
GWA12	19-Apr-2024	1149												Dry										1																	
GWC12	19-Apr-2024	1209		0.03	<0.001	0.069	672	103	<1	171	2650	0.007	19/04/2024	7.2	7.1	8	<1	0.7	0.73	0.002	53	0.225	0.002	0.004		7.4	7.51	26	170	<0.01	418	1.02	466	18	672	28	28.3	1730	0.009		
GWA14	19-Apr-2024	1137												Dry										1																	
GWC14	19-Apr-2024	1130		0.03	<0.001	0.036	440	268	<1	205	3540	0.005		3.13	6.6	7	<1	0.84	2.22	0.001	130	0.217	0.002	0.008		7.4	7.5	39	82.3	<0.01	402	2.31	1310	19.5	440	41.8	42.6	2750	0.006		
GWA15	19-Apr-2024	1028												Dry										2																	
GWC15	19-Apr-2024	1051		0.03	<0.001	0.047	497	251	<1	252	3750	0.002		4.59	7	9	<1	9.01	1.19	<0.001	113	0.154	<0.001	0.004		7	7.13	35	144	<0.01	368	2.88	1410	18.5	497	46.4	38.7	2910	0.006		
GWC33	05-Apr-2024	1202											05/04/2024	Dry										3																	
GWC26	10-Apr-2024	1216		0.16	<0.001	0.264	568	24	<1	143	1500	0.018	10/04/2024	53.04	7.5	15	<1	3.03	0.81	0.002	15	0.039	0.001	0.002		7.3	7.51	16	125	<0.01	277	0.397	21	20	568	15.8	14.9	840	0.01		
GWA16	05-Apr-2024	1312												Dry										2																	
GWC16	05-Apr-2024	1248		0.1	<0.001	0.127	663	83	<1	354	2460	0.004	05/04/2024	30.78	6.6	22	<1	1.79	2.72	0.003	41	0.042	<0.001	<0.001		7.1	7.26	22	189	<0.01	385	0.849	120	20	663	25.7	24.8	1450	0.011		
GWC30	16-Apr-2024	1154		0.05	<0.001	0.06	580	221	<1	537	3040	0.082	16/04/2024	29.88	6.6	30	<1	3.24	2.13	<0.001	136	0.224	0.001	0.007		6.8	6.93	50	224	<0.01	170	2.4	299	20.5	580	33	30.9	2040	0.022		

a Sample Location	Sampling Date	Sampling Time	Aluminium mg/L	Arsenic mg/L	Arsenic mg/L	Barium mg/L	Bicarbonate Alkalinity as CaCO3 mg/L	Calcium - Dissolved mg/L	Carbonate Alkalinity as CaCO3 mg/L	Chloride mg/L	Conductivity @ 25oC µS/cm	Copper mg/L	Data Download	Depth to Standpipe m	Dissolved Oxygen - Dissolved mg/L	Free Carbon Dioxide as CO2 mg/L	Hydroxide Alkalinity as CaCO3 mg/L	Ionic Balance %	Iron mg/L	Lead mg/L	Magnesium - Dissolved mg/L	Manganese mg/L	Molybdenum mg/L	Nickel mg/L	No Sample 1=Dry 2=Inadequate Vol 3=Not Stabilised 4=No access	pH pH Unit	pH Redox pH Unit	Potassium - Dissolved mg/L	Redox Potential mV	Selenium mg/L	Sodium - Dissolved mg/L	Strontium mg/L	Sulfate as SO4 - Turbidimetric mg/L	Temperature °C	Total Alkalinity as CaCO3 mg/L	Total Anions meq/L	Total Cations meq/L	Total Dissolved Solids @180°C - Dissolved mg/L	Zinc mg/L			
GWC31	16-Apr-2024	121 5												Dry											1																	
GWc37	16-Apr-2024	110 4		1.12	0.03	0.03 3	189	12 1	<1	173	2420	0.013		25.0 6	6.2	27	<1	5.0 8	6.63	0.002	94	1.24	0.001	0.012		6.3	6.4 7	53	52. 8	<0.0 1	228	1.4	916	21	189	27. 7	25	1760	0.056			
GWC27	16-Apr-2024	101 0		0.53	0.002	0.04 7	<1	20	<1	304	1600	0.091	16/04/2024	15.5 5	6.5	<1	<1	1.5 2	1.28	0.005	34	2.85	<0.0 1	0.032		4.1	4.1 5	34	317	<0.0 1	207	0.14 6	265	19	<1	14. 1	13. 7	994	0.394			
GWA32	16-Apr-2024	145 5		0.01	<0.0 1	0.05 3	607	13 9	<1	691	3890	0.002	16/04/2024	1.9	6.1	12	<1	1.7 5	<0.0 5	<0.0 1	16 4	0.21 2	0.003	0.002		7.2	7.5 9	24	178	<0.0 1	450	2.17	502	19. 5	607	42. 1	40. 6	2560	0.006			
GWC32	16-Apr-2024	152 1		0.02	<0.0 1	0.03 8	137 0	15 4	<1	297	3450	0.004	16/04/2024	3.74	5.8	11 4	<1	4.9 2	1.43	<0.0 1	96	0.08 9	<0.0 1	0.001		6.6	6.7 5	46	304	<0.0 1	477	4.85	271	19. 5	137 0	41. 4	37. 5	2160	0.009			
GWA34	16-Apr-2024	123 6		1.92	<0.0 1	0.02 9	272	17 3	<1	356	3050	0.025	16/04/2024	3.82	7.6	14	<1	0.9 8	0.52	<0.0 1	17 4	0.06 6	0.002	0.056		6.7	7.1	6	298	<0.0 1	233	1.48	885	22	272	33. 9	33. 2	2370	0.09			
GWC34	16-Apr-2024	125 4												Dry											2																	
GWa36	23-Apr-2024	953												Dry											2																	
GWc36	23-Apr-2024	100 5		0.01	<0.0 1	0.01 7	270	15 3	<1	313	3820	0.001		8.94	6.2	14	<1	5.3 6	21	<0.0 1	15 4	2.05	0.002	0.013		6.4	6.6 3	40	27. 2	<0.0 1	474	1.06	156 0	18. 5	270	46. 7	42	2930	0.021			
GWC25	29-Apr-2024	104 5		0.37	<0.0 1	0.10 2	265	33	<1	215	1340	0.055	29/04/2024	26.1 1	8.8	7	<1	5.0 9	0.47	0.002	50	0.06	<0.0 1	0.018		6.8	6.8 2	8	260	<0.0 1	154	0.49 2	128	20	265	14	12. 7	680	<0.0 5			
PZ13	05-Apr-2024	952												Dry											1																	
PZ20	29-Apr-2024	124 5		0.87	0.001	0.02 9	434	31	<1	26	916	0.004		2.48	7.4	5	<1	3.8 6	1.01	0.001	38	0.29 2	0.001	0.004		7.5	7.4 9	18	257	<0.0 1	106	0.39	54	20	434	10. 5	9.7 4	576	0.007			
PZ21	29-Apr-2024	131 3		1.78	0.002	0.02 4	362	20	<1	19	806	0.005		3.75	7.2	12	<1	3.1 7	1.43	0.002	13	0.38 3	0.002	0.006		7.7	7.6 8	8	241	<0.0 1	141	0.22 2	57	20	362	8.9 6	8.4	498	0.013			
PZ26	29-Apr-2024	122 0												Dry											1																	
GWf1	29-Apr-2024	115 4												Dry											2																	
GWf2	29-Apr-2024	135 7																							1																	
GWf3	29-Apr-2024	112 8		1.14	<0.0 1	0.10 2	715	22 5	<1	422	4370	0.009		19.0 1	6.7	28	<1	7.6 8	2.62	0.004	29 4	2.02	0.002	0.012		6.7	6.6 9	40	270	<0.0 1	376	2.42	170 0	21. 5	715	61. 6	52. 8	3630	0.072			
GWf4	29-Apr-2024	135 7																							1																	
GWf5	29-Apr-2024	121 3												Dry											1																	
GWf7	29-Apr-2024	135 7																							1																	
Barollogger Office	29-Apr-2024	135 6											29/04/2024																													
GWA1	01-May-2024	115 2												Dry											1																	
GWA2	01-May-2024	134 9	<0.0 1	0.82	0.003	0.05 6	105	25	<1	154	896	0.006		3.48	7.3	14	<1	6.0 5	4.08	0.003	32	0.55 3	<0.0 1	0.005		6.6	6.7 6	9	153	<0.0 1	113	0.34 3	180	17. 5	105	10. 2	9.0 3	516	0.006			
GWA3	28-May-2024	120 7												Dry											2																	
GWA4	22-May-2024	140 0	<0.0 1	0.16	0.028	0.05 6	419	71	<1	205	1460	<0.0 1		2.57	8.1	30	<1	2.7 2	9.86	<0.0 1	47	0.36	<0.0 1	0.012		6.9	7.2 2	19	155	<0.0 1	176	0.49 8	109	18. 5	419	16. 4	15. 6	780	<0.0 5			
GWA5	08-May-2024	151 8	<0.0 1	0.2	0.002	0.05 4	768	70 0	<1	198 0	1240 0	0.003		2.41	7.2	61	<1	4.1 1	0.34	<0.0 1	87 3	0.54 4	0.009	0.032		7.2	7.2 9	44	172	<0.0 1	150 0	5.44	424 0	18. 5	768	159	173	1100 0	0.044			
GWA6	22-May-2024	125 2	<0.0 1	0.2	0.002	0.07 5	590	24 9	<1	612	5050	<0.0 1		1.05	7.9	20	<1	1.6 9	0.96	<0.0 1	26 3	0.23 7	0.001	0.005		7.3	7.6	20	145	<0.0 1	642	1.96	171 0	17	590	64. 6	62. 5	3950	0.007			
GWA7	08-May-2024	125 3												Dry											2																	
GWA8	16-May-2024	133 4	0.01	1.11	<0.0 1	0.03	298	78	<1	225	1640	0.003		1.39	8.3	8	<1	1.1 8	0.92	0.003	67	1.71	<0.0 1	0.005		7.2	7.5 7	10	167	<0.0 1	187	0.75 8	244	17. 5	298	17. 4	17. 8	961	0.008			
GWC1	01-May-2024	132 8	<0.0 1	0.03	<0.0 1	0.07 9	509	15 0	<1	544	3190	<0.0 1		9.61	7.1	19	<1	0.1 2	0.12	<0.0 1	10 0	0.94 2	<0.0 1	0.005		7	7.1 9	26	184	<0.0 1	446	1.68	489	16	509	35. 7	35. 8	2010	<0.0 5			

a Sample Location	Sampling Date	Sampling Time	Aluminium mg/L	Arsenic mg/L	Arsenic mg/L	Barium mg/L	Bicarbonate Alkalinity as CaCO3 mg/L	Calcium - Dissolved mg/L	Carbonate Alkalinity as CaCO3 mg/L	Chloride mg/L	Conductivity @ 25oC µS/cm	Copper mg/L	Data Download	Depth to Standpipe m	Dissolved Oxygen - Dissolved mg/L	Free Carbon Dioxide as CO2 mg/L	Hydroxide Alkalinity as CaCO3 mg/L	Ionic Balance %	Iron mg/L	Lead mg/L	Magnesium - Dissolved mg/L	Manganese mg/L	Molybdenum mg/L	Nickel mg/L	No Sample 1=Dry 2=Inadequate Vol 3=Not Stabilised 4=No access	pH pH Unit	pH Redox pH Unit	Potassium - Dissolved mg/L	Redox Potential mV	Selenium mg/L	Sodium - Dissolved mg/L	Strontium mg/L	Sulfate as SO4 - Turbidimetric mg/L	Temperature °C	Total Alkalinity as CaCO3 mg/L	Total Anions meq/L	Total Cations meq/L	Total Dissolved Solids @180°C - Dissolved mg/L	Zinc mg/L			
GWC2	28-May-2024	1200	<0.01	0.02	<0.001	0.298	499	57	<1	122	1220	<0.001		3.27	8.6	7	<1	1.51	0.48	<0.001	26	0.026	<0.001	0.001		7.6	7.69	27	252	<0.01	171	0.565	5	20	499	13.5	13.1	700	<0.005			
GWC3	22-May-2024	1320	<0.01	0.02	<0.001	0.023	588	176	<1	366	3780	0.001		2.23	6.8	27	<1	0.48	3.64	0.004	172	0.574	0.004	0.124		7.1	7.42	46	165	<0.01	484	1.42	1130	19.5	588	45.6	45.2	2710	0.021			
GWC4	16-May-2024	1153	0.01	0.01	<0.001	0.045	584	184	<1	350	2420	<0.001		13.58	7.6	44	<1	0.75	2.4	<0.001	82	0.042	<0.001	<0.001		6.6	7.01	55	154	<0.01	214	1.9	226	19.5	584	26.2	26.6	1420	<0.005			
GWC5	16-May-2024	1409	0.01	0.04	0.002	0.146	2010	314	<1	526	5500	0.001		5.29	5.3	483	<1	5.93	14.4	0.009	156	1.09	<0.001	0.02		6.6	6.74	98	183	<0.01	922	7	392	18.5	2010	63.2	71.1	3440	0.026			
GWA10	27-May-2024	1211	<0.01	0.13	0.003	0.034	405	120	<1	482	2960	0.008	27/05/2024	3.47	7.6	13	<1	0.68	1.75	<0.001	110	1.18	<0.001	0.004		7.1	7.26	1	261	<0.01	383	0.941	503	18	405	32.2	31.7	1950	<0.005			
GWC10	27-May-2024	1235		0.01	<0.001	0.041	392	241	<1	385	3840	0.004	27/05/2024	2.3	9.4	7	<1	8.94	0.79	<0.001	141	0.184	0.001	0.004		7.5	7.73	33	279	<0.01	547	2.52	1040	17.5	392	40.3	48.3	2870	<0.005			
GWA11	27-May-2024	1107	<0.01	0.32	<0.001	0.033	461	35	<1	58	1160	0.014		3.55	7.1	6	<1	3.78	0.7	<0.001	31	2.95	<0.001	0.002		7.5	7.69	12	250	<0.01	192	0.445	56	18	461	12	13	708	0.007			
GWC11	27-May-2024	1145		0.05	<0.001	0.026	247	79	<1	268	2200	0.002		6.96	7.5	39	<1	3.78	7.5	<0.001	70	1.21	<0.001	0.008		6.4	6.62	21	11.2	<0.01	332	0.713	499	18	247	22.9	24.7	1450	0.015			
GWA12	28-May-2024	1128												Dry											1																	
GWC12	28-May-2024	1120		0.02	<0.001	0.067	688	124	<1	212	2650	0.004		7.42	7.4	12	<1	5.7	0.84	<0.001	56	0.266	0.002	0.003		7.4	7.59	28	260	<0.01	498	1.04	474	18	688	29.6	33.2	1780	<0.005			
GWA14	22-May-2024	1508												Dry											1																	
GWC14	22-May-2024	1500		0.08	<0.001	0.11	463	281	<1	283	3590	0.011	22/05/2024	3.67	7.9	11	<1	1.09	1.53	<0.001	122	0.208	0.002	0.007		7.5	7.91	36	159	<0.01	408	1.82	1270	18.5	463	43.7	42.7	2640	0.012			
GWA15	22-May-2024	1442												Dry											2																	
GWC15	22-May-2024	1430		0.02	<0.001	0.042	521	287	<1	342	3710	<0.001	22/05/2024	5.32	7.8	27	<1	5.51	1.09	<0.001	131	0.151	<0.001	0.002		7	7.38	39	183	<0.01	430	2.28	964	17.5	521	40.1	44.8	2710	0.007			
GWC33	01-May-2024	1011											01/05/2024	Dry											2																	
GWC26	01-May-2024	1121		0.06	<0.001	0.221	588	20	<1	122	1480	0.007	01/05/2024	53.51	7.9	11	<1	1.02	0.41	<0.001	13	0.032	0.001	0.001		7.3	7.58	16	171	<0.01	296	0.392	23	18.5	588	15.7	15.4	757	0.01			
GWA16	01-May-2024	1301												Dry											2																	
GWC16	01-May-2024	1244		0.09	<0.001	0.132	673	77	<1	328	2430	0.002		30.72	7.5	19	<1	0.64	1.58	0.002	40	0.041	<0.001	<0.001		7.1	7.34	23	198	<0.01	401	0.939	134	19	673	25.5	25.2	1440	0.006			
GWC30	22-May-2024	1150		0.03	<0.001	0.046	586	252	<1	685	3120	0.056	22/05/2024	29.67	7.6	60	<1	3.19	2.01	<0.001	160	0.202	<0.001	0.004		6.7	6.89	47	193	<0.01	189	2.26	310	19	586	37.5	35.2	2020	0.016			
GWC31	22-May-2024	1213												Dry											2																	
Gwc37	22-May-2024	1107		0.21	0.033	0.025	186	131	<1	211	2440	0.01		25.08	7.4	65	<1	0.22	8.42	<0.001	108	1.18	0.001	0.01		6.2	6.47	52	15.1	<0.01	255	1.36	879	19.5	186	28	27.8	1780	0.04			
GWC27	22-May-2024	1014		0.54	0.002	0.042	<1	20	<1	373	1580	0.094	22/05/2024	16.69	8.2	<1	<1	5.24	1.12	0.005	33	2.72	<0.001	0.035		4.2	4.48	33	377	<0.01	232	0.164	276	18.5	<1	16.3	14.6	880	0.403			
GWA32	16-May-2024	1243	<0.01	<0.001	0.048	537	154	<1	748	3890	0.002	16/05/2024	2.11	8	14	<1	1.96	<0.001	183	0.166	<0.001	183	0.003	0.002		7.2	7.65	22	170	<0.01	475	1.9	502	17.5	537	42.3	44	2380	<0.005			
GWC32	16-May-2024	1305	<0.01	<0.001	0.035	1240	172	<1	342	3510	0.002	16/05/2024	3.73	7.4	119	<1	4.97	0.75	<0.001	119	0.059	<0.001	<0.001		6.6	6.85	47	214	<0.01	561	4.37	259	18.5	1240	39.8	44	2110	<0.005				
GWA34	16-May-2024	1452		1.28	<0.001	0.028	285	196	<1	399	3120	0.014	16/05/2024	3.79	8.6	16	<1	5.04	0.5	<0.001	207	0.041	0.002	0.035		6.8	6.8	6	185	<0.01	260	1.37	848	20.5	285	34.6	38.3	2200	0.059			
GWC34	16-May-2024	1503												Dry											2																	
GWa36	27-May-2024	1305												Dry											2																	
Gwc36	27-May-2024	1316		0.02	<0.001	0.02	262	166	<1	354	3890	0.001		8.6	7.3	49	<1	8	25.3	<0.001	179	2.5	0.002	0.014		6.5	6.63	38	-8.5	<0.01	556	1.43	1240	18.5	262	41	48.2	2880	0.024			
GWC25	29-May-2024	1013		0.25	<0.001	0.097	246	38	<1	248	1350	0.062	29/05/2024	26.16	8.8	16	<1	3.3	0.28	0.001	57	0.041	<0.001	0.017		6.8	6.84	8	207	<0.01	186	0.437	97	18.5	246	13.9	14.9	747	<0.005			
PZ13	01-May-2024	1416												Dry											1																	

a Sample Location	Sampling Date	Sampling Time	Aluminium mg/L	Arsenic mg/L	Arsenic mg/L	Barium mg/L	Bicarbonate Alkalinity as CaCO3 mg/L	Calcium - Dissolved mg/L	Carbonate Alkalinity as CaCO3 mg/L	Chloride mg/L	Conductivity @ 25oC µS/cm	Copper mg/L	Data Download	Depth to Standpipe m	Dissolved Oxygen - Dissolved mg/L	Free Carbon Dioxide as CO2 mg/L	Hydroxide Alkalinity as CaCO3 mg/L	Ionic Balance %	Iron mg/L	Lead mg/L	Magnesium - Dissolved mg/L	Manganese mg/L	Molybdenum mg/L	Nickel mg/L	No Sample 1=Dry 2=Inadequate Vol 3=Not Stabilised 4=No access	pH pH Unit	pH Redox pH Unit	Potassium - Dissolved mg/L	Redox Potential mV	Selenium mg/L	Sodium - Dissolved mg/L	Strontium mg/L	Sulfate as SO4 - Turbidimetric mg/L	Temperature °C	Total Alkalinity as CaCO3 mg/L	Total Anions meq/L	Total Cations meq/L	Total Dissolved Solids @180°C - Dissolved mg/L	Zinc mg/L		
PZ20	29-May-2024	1223		1.3	<0.001	0.025	360	33	<1	27	902	0.004		2.12	7.8	6	<1	0.48	1.02	0.001	36	0.195	<0.001	0.005		7.5	7.47	15	211	<0.001	91	0.353	52	17.5	360	9.04	8.95	562	0.01		
PZ21	29-May-2024	1244		2.14	0.002	0.02	310	19	<1	15	753	0.012		3.7	7.8	4	<1	1.41	0.86	0.004	15	0.142	0.002	0.006		7.7	7.66	7	201	<0.001	115	0.217	46	18.5	310	7.57	7.36	478	0.016		
PZ26	29-May-2024	1202												Dry										1																	
GWF1	29-May-2024	1134												Dry										2																	
GWF2	29-May-2024	1308																						1																	
GWF3	29-May-2024	1106		0.58	<0.001	0.083	693	234	<1	408	4230	0.006		18.71	7.1	51	<1	6.37	1.78	0.003	345	1.76	0.002	0.011		6.7	6.63	41	223	<0.001	402	1.99	1260	21	693	51.6	58.6	3280	0.079		
GWF4	29-May-2024	1308																						1																	
GWF5	29-May-2024	1154												Dry										1																	
GWF7	29-May-2024	1308																						1																	
Barologger Office	28-May-2024	1315											29/05/2024																												
GWA1	20-Jun-2024	1132												Dry										1																	
GWA2	05-Jun-2024	1109	<0.001	0.23	0.003	0.052	109	29	<1	121	942	<0.001		3.52	8.2	21	<1	0.08	3.87	<0.001	35	0.641	<0.001	0.004		6.6	6.73	9	160	<0.001	116	0.319	192	15.5	109	9.59	9.6	594	<0.005		
GWA3	18-Jun-2024	1222												Dry										2																	
GWA4	18-Jun-2024	952	<0.001	0.35	0.044	0.066	419	80	<1	212	1600	0.001		2.69	6.2	8	<1	0.39	15.2	<0.001	57	0.409	<0.001	0.012		6.9	7.11	19	188	<0.001	196	0.663	154	15	419	17.6	17.7	864	0.007		
GWA5	04-Jun-2024	1430	<0.001	0.49	0.004	0.035	603	493	<1	1280	9560	0.003		2.11	8.2	16	<1	2.08	1.53	<0.001	673	0.331	0.002	0.022		7.3	7.32	29	214	<0.001	1130	4.59	4190	16	603	135	130	8760	0.043		
GWA6	18-Jun-2024	1252	<0.001	0.32	0.001	0.076	509	261	<1	562	5160	<0.001		0.92	6.5	7	<1	2.06	0.61	<0.001	283	0.254	<0.001	0.005		7.3	7.48	17	187	<0.001	680	2.21	2070	15	509	69.1	66.3	4350	<0.005		
GWA7	17-Jun-2024	1325												Dry										2																	
GWA8	24-Jun-2024	1116	<0.001	0.18	<0.001	0.014	362	78	<1	224	1700	<0.001		1.39	6.9	14	<1	0.68	0.63	<0.001	68	0.875	<0.001	<0.001		7.1	7.21	9	176	<0.001	192	0.758	229	13.5	362	18.3	18.1	1000	<0.005		
GWC1	05-Jun-2024	1043	<0.001	0.05	<0.001	0.065	522	164	<1	555	3360	<0.001		9.18	7.6	27	<1	0.23	0.27	<0.001	101	0.747	<0.001	0.005		7.1	7.2	28	174	<0.001	452	1.79	510	15	522	36.7	36.9	2130	0.01		
GWC2	18-Jun-2024	1213	<0.001	0.01	<0.001	0.316	471	57	<1	107	1220	<0.001		3.16	7.5	6	<1	5.52	0.18	<0.001	27	0.012	<0.001	<0.001		7.6	7.78	26	182	<0.001	189	0.548	3	18.5	471	12.5	14	762	<0.005		
GWC3	18-Jun-2024	1312	<0.001	<0.001	<0.001	0.028	561	180	<1	326	3810	<0.001		2.46	8.1	8	<1	1.02	0.4	<0.001	184	0.086	0.003	0.107		7.2	7.5	46	197	<0.001	511	1.68	1350	18.5	561	48.5	47.5	3130	<0.005		
GWC4	17-Jun-2024	1216	<0.001	0.03	<0.001	0.034	623	190	<1	385	2430	<0.001		13.53	6.6	19	<1	1.54	2.92	<0.001	86	0.065	<0.001	<0.001		6.6	6.89	55	208	<0.001	230	1.82	266	18	623	28.8	28	1480	<0.005		
GWC5	24-Jun-2024	1152	<0.001	0.01	0.006	0.165	2080	262	<1	492	5380	<0.001		5.24	3.4	371	<1	1.54	26.5	0.011	138	1.04	<0.001	0.02		6.6	6.67	80	73.6	<0.001	805	7.02	383	17.5	2080	63.4	61.5	3020	0.016		
GWA10	05-Jun-2024	1305	<0.001	0.04	0.003	0.036	392	131	<1	464	2950	0.001	05/06/2024	3.34	7.8	21	<1	0.6	1.76	<0.001	108	1.07	<0.001	0.004		7	7.23	2	171	<0.001	380	0.961	551	16	392	32.4	32	1940	<0.005		
GWC10	05-Jun-2024	1331	<0.001	<0.001	<0.001	0.033	387	183	<1	376	3810	0.002	05/06/2024	1.84	8.3	18	<1	1.74	0.52	<0.001	137	0.093	<0.001	0.003		7.2	7.35	32	174	<0.001	548	1.87	1360	15.5	387	46.6	45.1	2830	<0.005		
GWA11	05-Jun-2024	1158	<0.001	0.26	<0.001	0.024	408	36	<1	47	1030	<0.001		3.5	8	9	<1	6.84	0.64	<0.001	30	0.202	<0.001	0.001		7.6	7.71	12	163	<0.001	170	0.424	46	16.5	408	10.4	12	620	<0.005		
GWC11	05-Jun-2024	1234		0.04	<0.001	0.022	249	76	<1	248	2240	0.001	05/06/2024	6.83	7.4	67	<1	2.68	5.25	<0.001	73	1.04	<0.001	0.006		6.4	6.56	21	49.6	<0.001	333	0.593	555	17	249	23.5	24.8	1470	0.013		
GWA12	18-Jun-2024	1149												Dry										1																	
GWC12	18-Jun-2024	1139		0.02	<0.001	0.061	646	112	<1	201	2680	0.002	18/06/2024	7.27	6.3	8	<1	0.04	0.93	<0.001	51	0.232	0.001	0.002		7.4	7.67	27	207	<0.001	450	0.943	550	17.5	646	30	30	1880	<0.005		
GWA14	18-Jun-2024	1116												Dry										1																	

a Sample Location	Sampling Date	Sampling Time	Aluminium mg/L	Arsenic mg/L	Arsenic mg/L	Barium mg/L	Bicarbonate Alkalinity as CaCO3 mg/L	Calcium - Dissolved mg/L	Carbonate Alkalinity as CaCO3 mg/L	Chloride mg/L	Conductivity @ 25oC µS/cm	Copper mg/L	Data Download	Depth to Standpipe m	Dissolved Oxygen - Dissolved mg/L	Free Carbon Dioxide as CO2 mg/L	Hydroxide Alkalinity as CaCO3 mg/L	Ionic Balance %	Iron mg/L	Lead mg/L	Magnesium - Dissolved mg/L	Manganese mg/L	Molybdenum mg/L	Nickel mg/L	No Sample 1=Dry 2=Inadequate Vol 3=Not Stabilised 4=No access	pH pH Unit	pH Redox pH Unit	Potassium - Dissolved mg/L	Redox Potential mV	Selenium mg/L	Sodium - Dissolved mg/L	Strontium mg/L	Sulfate as SO4 - Turbidimetric mg/L	Temperature °C	Total Alkalinity as CaCO3 mg/L	Total Anions meq/L	Total Cations meq/L	Total Dissolved Solids @180°C - Dissolved mg/L	Zinc mg/L			
GWC14	18-Jun-2024	110 6		<0.0 1	<0.00 1	0.05 8	419	28 3	<1	246	3540	<0.00 1		3.64	6.4	6	<1	1.1 6	0.79	<0.00 1	12 9	0.21 2	0.002	0.004		7.6	7.7 5	39	207	<0.0 1	421	1.94	143 0	17	419	45. 1	44	2970	<0.00 5			
GWA15	18-Jun-2024	101 2												Dry											2																	
GWC15	18-Jun-2024	102 9		0.02	<0.00 1	0.04	499	27 2	<1	297	3670	<0.00 1	18/06/2024	5.14	6.4	9	<1	7.2 2	1.27	<0.00 1	13 2	0.14 6	<0.00 1	0.001		7	7.3 1	40	211	<0.0 1	430	2.26	157 0	16	499	51	44. 2	3170	<0.00 5			
GWC33	20-Jun-2024	955											20/06/2024	Dry											2																	
GWC26	20-Jun-2024	110 7		0.27	<0.00 1	0.27 4	600	30	<1	152	1510	0.016		52.5 5	7.7	15	<1	2.4 9	1.01	0.002	15	0.03 1	0.001	0.002		7.3	7.5 2	18	191	<0.0 1	332	0.39 8	24	18	600	16. 8	17. 6	811	0.024			
GWA16	05-Jun-2024	143 3												Dry											2																	
GWC16	05-Jun-2024	145 7		0.03	<0.00 1	0.09 4	638	59	<1	279	2090	<0.00 1	05/06/2024	30.5 2	8.4	26	<1	0.2 7	2.65	<0.00 1	31	0.03 3	<0.00 1	<0.00 1		7.2	7.3 2	20	98. 3	<0.0 1	370	0.52 1	77	18. 5	638	22. 2	22. 1	1150	<0.00 5			
GWC30	24-Jun-2024	124 7		0.02	<0.00 1	0.04 5	576	21 4	<1	544	3040	0.036	24/06/2024	29.5 5	6.2	69	<1	1.4	4.36	<0.00 1	14 9	0.18 7	<0.00 1	0.001		6.6	6.7 8	42	81. 2	<0.0 1	171	2.21	264	18	576	32. 4	31. 4	2080	0.008			
GWC31	24-Jun-2024	131 1												Dry											2																	
GWC37	17-Jun-2024	145 6		0.12	0.031	0.02 1	178	12 0	<1	192	2430	0.004		24.9 5	6.6	20	<1	2.9 3	9.22	<0.00 1	10 4	1.06	0.001	0.009		6.2	6.5	50	218	<0.0 1	232	1.34	889	18. 5	178	27. 5	25. 9	1800	0.029			
GWC27	24-Jun-2024	135 1		0.5	0.003	0.03 9	<1	18	<1	310	1580	0.066	24/06/2024	15.6 9	6.8	<1	<1	3.5 9	1.26	0.005	28	2.61	<0.00 1	0.032		4.1	4.6 2	30	396	<0.0 1	205	0.12 8	245	17	<1	13. 8	12. 9	811	0.371			
GWA32	20-Jun-2024	125 2		<0.0 1	<0.00 1	0.05 7	595	14 0	<1	670	3690	0.001	20/06/2024	1.76	7.4	24	<1	3.3 2	<0.0 5	<0.00 1	17 8	0.09 7	0.002	0.002		7.2	7.3 8	22	189	<0.0 1	485	1.92	467	14. 5	595	40. 5	43. 3	2440	<0.00 5			
GWC32	20-Jun-2024	131 8		0.02	<0.00 1	0.04 1	138 0	16 5	<1	312	3410	<0.00 1	20/06/2024	3.71	6.9	12 0	<1	2.0 9	0.85	<0.00 1	11 3	0.05 6	<0.00 1	0.002		6.6	6.8 6	46	196	<0.0 1	578	4.49	273	17. 5	138 0	42	43. 8	2140	<0.00 5			
GWA34	17-Jun-2024	141 6		0.02	<0.00 1	0.01 6	310	17 7	<1	420	3080	0.025	17/06/2024	3.7	7.3	7	<1	2.6 3	0.77	<0.00 1	19 7	0.09 1	0.001	0.006		6.7	7.0 7	4	216	<0.0 1	242	0.34 5	759	18. 5	310	33. 8	35. 7	2470	0.035			
GWC34	17-Jun-2024	142 5												Dry											2																	
GWA36	05-Jun-2024	141 5												Dry											2																	
GWC36	05-Jun-2024	140 5		<0.0 1	<0.00 1	0.01 6	258	15 9	<1	342	3870	<0.00 1		8.47	7.1	82	<1	1.4 3	20.1	<0.00 1	17 8	1.93	0.001	0.011		6.5	6.5 9	38	17. 1	<0.0 1	572	1.06	155 0	17. 5	258	47. 1	48. 4	2870	0.019			
GWC25	27-Jun-2024	110 7		0.33	<0.00 1	0.09 3	266	37	<1	278	1340	0.072	27/06/2024	26.2 1	9.1	20	<1	8.5 8	0.6	0.003	54	0.16 2	<0.00 1	0.018		6.7	6.7 6	8	70. 4	<0.0 1	165	0.39 9	148	18. 5	266	16. 2	13. 7	718	<0.00 5			
PZ13	05-Jun-2024	101 8												Dry											2																	
PZ20	27-Jun-2024	130 6		0.93	<0.00 1	0.02	341	36	<1	30	821	0.003		1.71	8.2	6	<1	2.3 8	0.85	0.001	36	0.13	<0.00 1	0.003		7.6	7.6 2	16	105	<0.0 1	102	0.29 2	72	14. 5	341	9.1 6	9.6	493	0.008			
PZ21	27-Jun-2024	132 7		0.43	<0.00 1	0.01 4	323	25	<1	19	736	0.002		3.46	8	4	<1	1.4 6	0.31	<0.00 1	17	0.15 3	0.001	0.004		7.8	7.7 7	8	102	<0.0 1	128	0.20 6	57	16. 5	323	8.1 8	8.4 2	429	0.008			
PZ26	27-Jun-2024	124 4												Dry											1																	
GWF1	27-Jun-2024	140 4																							1																	
GWF2	27-Jun-2024	140 4																							1																	
GWF3	27-Jun-2024	120 7		0.09	<0.00 1	0.06 2	763	22 1	<1	408	4010	0.004		18.6 3	7.6	44	<1	1.0 7	0.33	0.001	30 2	1.63	0.001	0.007		6.8	6.8 3	40	134	<0.0 1	372	1.85	132 0	20. 5	763	54. 2	53. 1	3060	0.035			
GWF4	27-Jun-2024	140 4																							1																	
GWF5	27-Jun-2024	123 7												Dry											2																	
GWF7	27-Jun-2024	140 4																							1																	
Barologger Office	27-Jun-2024	140 8											27/06/2024																													

a Sample Location	Sampling Date	Sampling Time	Aluminium mg/L	Arsenic mg/L	Arsenic mg/L	Barium mg/L	Bicarbonate Alkalinity as CaCO3 mg/L	Calcium - Dissolved mg/L	Carbonate Alkalinity as CaCO3 mg/L	Chloride mg/L	Conductivity @ 25oC µS/cm	Copper mg/L	Data Download	Depth to Standpipe m	Dissolved Oxygen - Dissolved mg/L	Free Carbon Dioxide as CO2 mg/L	Hydroxide Alkalinity as CaCO3 mg/L	Ionic Balance %	Iron mg/L	Lead mg/L	Magnesium - Dissolved mg/L	Manganese mg/L	Molybdenum mg/L	Nickel mg/L	No Sample 1=Dry 2=Inadequate Vol 3=Not Stabilised 4=No access	pH pH Unit	pH Redox pH Unit	Potassium - Dissolved mg/L	Redox Potential mV	Selenium mg/L	Sodium - Dissolved mg/L	Strontium mg/L	Sulfate as SO4 - Turbidimetric mg/L	Temperature °C	Total Alkalinity as CaCO3 mg/L	Total Anions meq/L	Total Cations meq/L	Total Dissolved Solids @180°C - Dissolved mg/L	Zinc mg/L		
GWA1	04-Jul-2024	103 4												Dry											1																
GWA2	04-Jul-2024	120 2	<0.0 1	0.15	0.002	0.04 9	104	26	<1	119	927	0.001		3.48	7.5	64	<1	2.4 4	2.35	<0.00 1	35	0.48 6	<0.00 1	0.004		6.6	6.4	7	241	<0.0 1	105	0.28 4	189	15	104	9.3 7	8.9 2	572	<0.00 5		
GWA3	15-Jul-2024	123 1												Dry											2																
GWA4	15-Jul-2024	103 2	<0.0 1	0.08	0.043	0.08 1	398	94	<1	231	1730	<0.00 1		2.81	7	17	<1	1.1 6	21.2	<0.00 1	59	0.49 8	0.002	0.013		6.9	7.0 2	20	92. 3	<0.0 1	190	0.81	165	15	398	17. 9	18. 3	1010	<0.00 5		
GWA5	08-Jul-2024	144 2	<0.0 1	0.07	0.001	0.03 1	575	52 3	<1	139 0	9310	0.002		2.13	9.3	31	<1	1.5 1	0.26	<0.00 1	67 3	0.04 2	0.001	0.007		7.5	7.3 7	26	209	<0.0 1	993	4.92	377 0	14	575	129	125	8440	0.023		
GWA6	15-Jul-2024	130 9	<0.0 1	0.06	<0.00 1	0.07 6	469	31 2	<1	609	5940	<0.00 1		0.94	6.9	12	<1	1.7 8	0.36	<0.00 1	29 7	0.17	<0.00 1	0.005		7.3	7.3 8	16	96. 3	<0.0 1	750	2.62	236 0	11. 5	469	75. 7	73	5150	<0.00 5		
GWA7	08-Jul-2024	123 7												Dry											2																
GWA8	12-Jul-2024	143 0	<0.0 1	0.35	<0.00 1	0.01 5	355	90	<1	224	1730	0.002		1.27	6.3	16	<1	0.8	1.28	<0.00 1	72	1.76	<0.00 1	0.004		7.1	7.2	10	367	<0.0 1	190	0.76 6	280	13. 5	355	19. 2	18. 9	1060	<0.00 5		
GWC1	04-Jul-2024	122 4	<0.0 1	0.02	<0.00 1	0.07 3	511	14 4	<1	556	3270	<0.00 1		9.33	7.8	59	<1	0.4 3	0.24	<0.00 1	99	0.77 9	<0.00 1	0.004		7	7.1 3	27	199	<0.0 1	443	1.5	466	16	511	35. 6	35. 3	2120	<0.00 5		
GWC2	15-Jul-2024	124 1	<0.0 1	0.01	<0.00 1	0.35 7	501	59	<1	115	1220	<0.00 1		2.71	7.5	7	<1	0.4 8	0.34	<0.00 1	24	0.02	<0.00 1	<0.00 1		7.6	7.8	24	102	<0.0 1	176	0.56 6	3	15. 5	501	13. 3	13. 2	778	<0.00 5		
GWC3	15-Jul-2024	133 4	<0.0 1	<0.0 1	<0.00 1	0.02 9	581	18 7	<1	306	3820	<0.00 1		2.5	6.8	18	<1	1.9 5	0.42	<0.00 1	17 3	0.70 8	0.002	0.175		7.1	7.2 9	43	110	<0.0 1	465	1.82	127 0	16	581	46. 7	44. 9	3130	<0.00 5		
GWC4	12-Jul-2024	124 6	<0.0 1	0.02	<0.00 1	0.03 4	631	19 4	<1	333	2430	0.002		13.5 4	6.4	91	<1	0.2 8	2.49	<0.00 1	82	0.03 6	<0.00 1	<0.00 1		6.6	6.7 6	48	352	<0.0 1	216	1.72	250	18	631	27. 2	27	1470	0.006		
GWC5	12-Jul-2024	145 6	<0.0 1	0.02	0.004	0.14 8	212 0	28 4	<1	494	5420	0.002		5.24	4.1	65 7	<1	1.4 1	19.6	0.011	14 2	1.05	<0.00 1	0.021		6.6	6.8 7	85	348	<0.0 1	864	6.87	360	17	212 0	63. 8	65. 6	3540	0.013		
GWA10	15-Jul-2024	151 5	<0.0 1	0.06	0.015	0.04	395	12 3	<1	458	2880	0.007	15/07/2024	3.32	6.7	12	<1	1.5 4	9.44	<0.00 1	10 1	1.12	<0.00 1	0.005		7.1	7.2 9	1	113	<0.0 1	365	0.94 8	504	13. 5	395	31. 3	30. 4	1750	<0.00 5		
GWC10	15-Jul-2024	154 2		0.52	<0.00 1	0.02 6	391	23 8	<1	368	3790	0.003	15/07/2024	2.3	8.9	6	<1	2.1 1	0.75	<0.00 1	12 2	0.15 2	<0.00 1	0.003		7.7	7.8	32	123	<0.0 1	484	0.41 8	132 0	14	391	45. 7	43. 8	2970	<0.00 5		
GWA11	15-Jul-2024	142 1	<0.0 1	1.13	<0.00 1	0.02 7	398	35	<1	53	1020	<0.00 1		3.5	7.1	5	<1	2.6 2	1.28	<0.00 1	28	0.14 7	0.001	0.003		7.6	7.8	11	122	<0.0 1	153	0.41 8	47	14. 5	398	10. 4	11	636	<0.00 5		
GWC11	15-Jul-2024	145 2		0.05	<0.00 1	0.02 7	266	83	<1	255	2350	0.003	15/07/2024	6.57	6.5	31	<1	7.2 9	6.04	<0.00 1	74	1.26	<0.00 1	0.01		6.5	6.7	24	10. 9	<0.0 1	311	0.77 8	754	15. 5	266	28. 2	24. 4	1460	0.016		
GWA12	15-Jul-2024	115 8												Dry											1																
GWC12	15-Jul-2024	121 0		0.03	<0.00 1	0.06 2	691	11 4	<1	186	2680	0.004		6.92	6.6	11	<1	3.9 4	1.01	<0.00 1	47	0.23 9	0.001	0.003		7.5	7.5 9	27	93. 8	<0.0 1	439	0.96 9	610	16. 5	691	31. 8	29. 3	1890	<0.00 5		
GWA14	15-Jul-2024	112 7												Dry											1																
GWC14	15-Jul-2024	114 3		0.03	<0.00 1	0.03 4	441	28 6	<1	234	3540	0.015	15/07/2024	3.46	7.4	8	<1	2.5 1	1.02	<0.00 1	11 8	0.22 6	0.002	0.005		7.6	7.7 7	36	95. 2	<0.0 1	388	1.93	137 0	15	441	43. 9	41. 8	2960	0.007		
GWA15	15-Jul-2024	105 1												Dry											2																
GWC15	15-Jul-2024	111 2		0.01	<0.00 1	0.04	519	27 8	<1	275	3640	0.001		4.84	6.8	14	<1	1.7 7	0.55	<0.00 1	12 6	0.13 1	<0.00 1	0.002		7.1	7.3 3	38	97. 4	<0.0 1	414	2.27	128 0	15. 5	519	44. 8	43. 2	2940	<0.00 5		
GWC33	04-Jul-2024	925											04/07/2024	Dry											2																
GWC26	04-Jul-2024	100 8		0.02	<0.00 1	0.23 4	585	27	<1	141	1500	0.003	04/07/2024	53.2 4	7.2	31	<1	0.6 2	0.38	<0.00 1	14	0.02	<0.00 1	<0.00 1		7.2	7.4 5	16	288	<0.0 1	307	0.34 4	19	18. 5	585	16. 1	16. 3	850	0.011		
GWA16	04-Jul-2024	105 5												Dry											2																
GWC16	04-Jul-2024	112 6		0.04	<0.00 1	0.12 1	651	86	<1	384	2460	0.003		30.3 1	7.4	52	<1	0.9 9	1.83	0.001	41	0.05 4	<0.00 1	<0.00 1		7.2	7.3 7	25	194	<0.0 1	406	0.83	127	18. 5	651	26. 5	26	1450	0.006		
GWC30	16-Jul-2024	121 7		0.08	<0.00 1	0.04 6	503	21 7	<1	534	2990	0.03	16/07/2024	29.5 2	7.6	13 0	<1	0.7 7	5.58	<0.00 1	14 4	0.21 9	<0.00 1	0.002		6.7	6.8	44	299	<0.0 1	174	2.31	324	17	503	31. 8	31. 4	1970	0.012		
GWC31	16-Jul-2024	124 2												Dry											2																
Gwc37	16-Jul-2024	112 7		1.28	0.03	0.05 1	176	13 0	<1	184	2460	0.039		24.8 6	9	13 7	<1	2.5 3	13.8	0.007	11 0	1.35	0.002	0.009		6.3	6.3 9	55	81	<0.0 1	261	1.38	874	18. 5	176	26. 9	28. 3	1720	0.063		

a Sample Location	Sampling Date	Sampling Time	Aluminium mg/L	Arsenic mg/L	Arsenic mg/L	Barium mg/L	Bicarbonate Alkalinity as CaCO3 mg/L	Calcium - Dissolved mg/L	Carbonate Alkalinity as CaCO3 mg/L	Chloride mg/L	Conductivity @ 25oC µS/cm	Copper mg/L	Data Download	Depth to Standpipe m	Dissolved Oxygen - Dissolved mg/L	Free Carbon Dioxide as CO2 mg/L	Hydroxide Alkalinity as CaCO3 mg/L	Ionic Balance %	Iron mg/L	Lead mg/L	Magnesium - Dissolved mg/L	Manganese mg/L	Molybdenum mg/L	Nickel mg/L	No Sample 1=Dry 2=Inadequate Vol 3=Not Stabilised 4=No access	pH pH Unit	pH Redox pH Unit	Potassium - Dissolved mg/L	Redox Potential mV	Selenium mg/L	Sodium - Dissolved mg/L	Strontium mg/L	Sulfate as SO4 - Turbidimetric mg/L	Temperature °C	Total Alkalinity as CaCO3 mg/L	Total Anions meq/L	Total Cations meq/L	Total Dissolved Solids @180°C - Dissolved mg/L	Zinc mg/L				
GWC27	16-Jul-2024	1029		0.54	0.003	0.042	5	20	<1	315	1600	0.097	16/07/2024	15.62	9.6	234	<1	2.82	1.1	0.006	31	2.99	<0.01	0.035		4.1	4.25	32	444	<0.01	217	0.132	270	15.5	5	14.6	13.8	920	0.391				
GWA32	12-Jul-2024	1335		<0.01	<0.001	0.049	608	140	<1	707	3850	0.002	12/07/2024	1.72	6.6	20	<1	2.69	<0.05	<0.001	185	0.056	0.002	0.002		7.2	7.35	21	332	<0.01	489	1.92	462	14.5	608	41.7	44	2460	<0.005				
GWC32	12-Jul-2024	1401		<0.01	<0.001	0.033	1360	133	<1	319	3430	0.003		3.73	5.9	139	<1	0.46	0.46	<0.001	111	0.048	<0.001	<0.001		6.6	6.88	44	338	<0.01	563	4.55	269	17.5	1360	41.8	41.4	2160	<0.005				
GWA34	16-Jul-2024	1317		1.59	0.001	0.03	296	174	<1	360	3050	0.028	16/07/2024	3.64	9.9	78	<1	2.89	1.06	<0.001	203	0.069	0.003	0.024		6.8	6.95	5	86.6	<0.01	259	1.32	1100	16	296	39	36.8	2210	0.083				
GWC34	16-Jul-2024	1326												Dry											2																		
GWa36	04-Jul-2024	1244												Dry											2																		
GWc36	04-Jul-2024	1256		0.02	<0.001	0.024	274	157	<1	349	3860	<0.001		8.24	7.1	141	<1	2.05	29.3	<0.001	168	2.31	0.002	0.013		6.5	6.5	40	13.5	0.02	524	1.21	1540	17.5	274	47.4	45.5	2950	0.026				
GWC25	25-Jul-2024	1025		0.16	0.001	0.099	264	37	<1	228	1330	0.052	25/07/2024	26.43	9.4	44	<1	0.62	0.4	0.004	59	0.104	<0.001	0.023		6.9	7.2	8	128	<0.01	168	0.485	112	18	264	14	14.2	743	0.011				
PZ13	04-Jul-2024	1328												Dry											1																		
PZ20	05-Jul-2024	1223		0.16	0.001	0.023	385	39	<1	31	907	0.004		1.7	8.1	17	<1	2.93	0.26	<0.001	44	0.175	<0.001	0.003		7.6	7.65	16	158	<0.01	110	0.392	76	15	385	10.1	10.8	499	0.007				
PZ21	25-Jul-2024	1246		0.27	0.001	0.014	312	24	<1	19	722	0.004		3.46	8	11	<1	1.16	0.2	<0.001	18	0.167	0.001	0.004		7.8	7.8	7	159	<0.01	121	0.243	56	15.5	312	7.94	8.12	428	0.008				
PZ26	25-Jul-2024	1154												Dry											1																		
GWF1	25-Jul-2024	1300																							1																		
GWF2	25-Jul-2024	1301																							1																		
GWF3	25-Jul-2024	1116		0.65	0.001	0.085	716	220	<1	395	4090	0.01		19.17	7.3	137	<1	2.05	1.25	0.003	313	1.79	0.002	0.014		6.7	6.95	40	189	<0.01	410	2.36	1560	21	716	57.9	55.6	3140	0.042				
GWF4	25-Jul-2024	1302																							1																		
GWF5	25-Jul-2024	1146												Dry											1																		
GWF7	25-Jul-2024	1303																							1																		
Barologger Office	25-Jul-2024	1322											25/07/2024																														
GWA1	15-Aug-2024	1119												Dry											1																		
GWA2	08-Aug-2024	1407	<0.01	0.16	0.001	0.041	112	27	<1	149	955	<0.001		3.44	6.9	15	<1	8.6	1.6	<0.001	36	0.413	<0.001	0.003		6.6	6.58	7	106	<0.01	102	0.286	200	14.5	112	10.6	8.93	561	<0.005				
GWA3	08-Aug-2024	1240												Dry											2																		
GWA4	08-Aug-2024	1028	<0.01	0.18	0.012	0.055	434	81	<1	268	1650	<0.001		2.85	6.3	12	<1	6.36	8.23	<0.001	53	0.446	<0.001	0.01		6.9	6.89	17	127	<0.01	178	0.652	125	16	434	18.8	16.6	890	<0.005				
GWA5	14-Aug-2024	1604	<0.01	0.13	0.001	0.032	541	508	<1	1040	8360	0.002		1.99	9.7	15	<1	2.05	0.25	<0.001	608	0.081	<0.001	0.005		7.5	7.57	23	148	<0.01	885	3.94	3800	14	541	119	114	7640	0.016				
GWA6	15-Aug-2024	1203	<0.01	0.28	<0.001	0.056	440	267	<1	554	5350	0.002		0.77	7.8	16	<1	3.42	0.52	<0.001	256	0.132	<0.001	0.004		7.4	7.36	12	250	<0.01	710	1.93	2200	13.5	440	70.2	65.6	4330	0.015				
GWA7	14-Aug-2024	1335												Dry											2																		
GWA8	13-Aug-2024	1455	<0.01	0.87	<0.001	0.017	352	87	<1	230	1770	0.002		1.31	6.8	17	<1	1.64	1.79	<0.001	72	2.68	<0.001	0.003		7.1	7.33	9	60	<0.01	192	0.738	286	13.5	352	19.5	18.8	1060	<0.005				
GWC1	08-Aug-2024	1425	<0.01	0.04	<0.001	0.061	503	147	<1	630	3320	<0.001		9.23	6.8	10	<1	7.09	0.31	<0.001	97	0.706	<0.001	0.003		7	7.03	25	136	<0.01	419	1.44	556	16.5	503	39.4	34.2	2040	<0.005				
GWC2	08-Aug-2024	1250	<0.01	0.01	<0.001	0.34	488	56	<1	134	1230	<0.001		2.34	7.3	8	<1	3.16	0.12	<0.001	23	0.003	<0.001	<0.001		7.5	7.5	24	130	<0.01	171	0.503	2	16.5	488	13.6	12.7	692	<0.005				
GWC3	15-Aug-2024	1221	<0.01	0.06	<0.001	0.024	582	170	<1	375	3750	<0.001		2.49	7.2	29	<1	1.52	0.38	<0.001	164	0.617	0.002	0.134		7	7.1	42	244	<0.01	476	1.41	1100	16	582	45.1	43.8	2660	<0.005				

a Sample Location	Sampling Date	Sampling Time	Aluminium mg/L	Arsenic mg/L	Arsenic mg/L	Barium mg/L	Bicarbonate Alkalinity as CaCO3 mg/L	Calcium - Dissolved mg/L	Carbonate Alkalinity as CaCO3 mg/L	Chloride mg/L	Conductivity @ 25oC µS/cm	Copper mg/L	Data Download	Depth to Standpipe m	Dissolved Oxygen - Dissolved mg/L	Free Carbon Dioxide as CO2 mg/L	Hydroxide Alkalinity as CaCO3 mg/L	Ionic Balance %	Iron mg/L	Lead mg/L	Magnesium - Dissolved mg/L	Manganese mg/L	Molybdenum mg/L	Nickel mg/L	No Sample 1=Dry 2=Inadequate Vol 3=Not Stabilised 4=No access	pH pH Unit	pH Redox pH Unit	Potassium - Dissolved mg/L	Redox Potential mV	Selenium mg/L	Sodium - Dissolved mg/L	Strontium mg/L	Sulfate as SO4 - Turbidimetric mg/L	Temperature °C	Total Alkalinity as CaCO3 mg/L	Total Anions meq/L	Total Cations meq/L	Total Dissolved Solids @180°C - Dissolved mg/L	Zinc mg/L	
GWC4	15-Aug-2024	130 1	<0.0 1	0.02	<0.00 1	0.03 3	635	18 8	<1	375	2430	0.002		13.5 2	7	84	<1	2.1 6	3.18	<0.00 1	83	0.04 2	<0.00 1	0.002		6.6	6.6 6	50	237	<0.0 1	216	1.64	231	19	635	28. 1	26. 9	1440	0.007	
GWC5	13-Aug-2024	142 6	<0.0 1	0.02	<0.00 1	0.15	225 0	32 0	<1	480	5580	0.003		5.25	5.7	31 8	<1	2.9 5	4.42	0.049	15 3	1.13	<0.00 1	0.02		6.6	6.8 1	90	63. 8	<0.0 1	886	6.98	333	17. 5	225 0	65. 4	69. 4	3600	0.016	
GWA10	02-Aug-2024	134 2	<0.0 1	0.18	0.009	0.03 8	396	11 3	<1	501	2900	0.002	02/08/2024	3.29	8.4	37	<1	9.8 8	5.95	<0.00 1	98	1.06	<0.00 1	0.004		7.1	7.1 8	1	192	<0.0 1	356	0.94 1	652	14	396	35. 6	29. 2	1810	<0.00 5	
GWC10	02-Aug-2024	141 1	<0.0 1	<0.00 1	0.04 2	387	21 2	<1	393	3830	0.002	02/08/2024	3.41	9.3	16	<1	4.4 5	0.37	<0.00 1	11 5	0.06 8	<0.00 1	0.003		7.4	7.4 30	192	<0.0 1	469	2.46	126 0	15	387	45	41. 2	2760	<0.00 5			
GWA11	02-Aug-2024	124 7	0.01	0.32	<0.00 1	0.02 4	482	31	<1	72	1270	<0.00 1		3.49	7.3	16	<1	1.7 1	0.62	<0.00 1	25	0.18 1	<0.00 1	0.001		7.6	7.6 8	11	178	<0.0 1	210	0.40 2	87	15	482	13. 5	13	694	<0.00 5	
GWC11	02-Aug-2024	131 0		0.06	<0.00 1	0.03 1	266	79	<1	285	2400	0.001	02/08/2024	6.34	7.2	80	<1	2.4 2	4.42	<0.00 1	70	1.39	<0.00 1	0.01		6.5	6.7	21	187	<0.0 1	307	0.9	548	17	266	24. 8	23. 6	1510	0.015	
GWA12	08-Aug-2024	120 0												Dry											1															
GWC12	08-Aug-2024	121 9		0.05	<0.00 1	0.13 6	657	11 0	<1	230	2740	0.01	08/08/2024	6.48	5.7	11	<1	2.4 8	0.7	<0.00 1	48	0.24 2	0.002	0.006		7.4	7.4 4	27	136	<0.0 1	450	1.99	557	17. 5	657	31. 2	29. 7	1760	0.009	
GWA14	08-Aug-2024	112 6												Dry											1															
GWC14	08-Aug-2024	114 2		0.04	<0.00 1	0.04 2	400	28 1	<1	284	3600	0.005	08/08/2024	3.21	6.8	11	<1	1.5 8	0.51	0.002	12 4	0.07 9	<0.00 1	0.003		7.6	7.4 7	36	138	<0.0 1	409	2.41	136 0	15. 5	400	44. 3	42. 9	2780	0.007	
GWA15	08-Aug-2024	105 0												Dry											2															
GWC15	08-Aug-2024	110 7		0.04	<0.00 1	0.02 8	465	27 2	<1	347	3700	<0.00 1	08/08/2024	4.73	7.3	15	<1	2.1 2	26	<0.00 1	12 8	2.2	0.001	0.014		7.2	7.2 4	39	139	<0.0 1	435	1.25	129 0	17	465	45. 9	44	2820	0.026	
GWC33	02-Aug-2024	100 9											02/08/2024	Dry											2															
GWC26	15-Aug-2024	103 9		0.03	<0.00 1	0.22 2	542	26	<1	151	1470	0.004	15/08/2024	52.7 9	8.3	17	<1	3.8 8	0.3	<0.00 1	14	0.02 4	0.001	<0.00 1		7.3	7.2 6	20	206	<0.0 1	264	0.39 1	25	19	542	15. 6	14. 4	818	<0.00 5	
GWA16	02-Aug-2024	104 7		0.63	0.001	0.13 8	695	36 8	<1	720 0	2070 0	0.003		2.75	8.2	53	<1	7.2 8	1.39	<0.00 1	57 9	0.21 1	0.001	0.005		7.1	7.1 9	19	194	<0.0 1	332 0	6.89	130 0	14. 5	695	244	211	1380 0	0.013	
GWC16	02-Aug-2024	112 6		0.12	<0.00 1	0.14	659	66	<1	418	2530	0.002	02/08/2024	30.5 5	7.3	39	<1	9.1 6	5.17	0.004	37	0.04 6	<0.00 1	<0.00 1		7.1	7.3 6	21	178	<0.0 1	370	1	127	18. 5	659	27. 6	23	1410	<0.00 5	
GWC30	13-Aug-2024	123 6		0.18	<0.00 1	0.06 6	506	21 2	<1	473	2860	0.063	13/08/2024	29.6	7.3	46	<1	4.4 7	2.53	0.002	13 2	0.18 8	<0.00 1	0.011		6.7	7.0 4	48	103	<0.0 1	153	2.43	414	19	506	32. 1	29. 3	1890	0.026	
GWC31	13-Aug-2024	130 1												Dry											2															
GWC37	13-Aug-2024	113 1		0.69	0.033	0.03 9	183	11 2	<1	184	2480	0.021		25.0 7	6.7	65	<1	2.7 3	10	0.006	10 7	1.3	0.001	0.01		6.2	6.5 8	54	17. 2	<0.0 1	236	1.48	896	19	183	27. 5	26	1750	0.053	
GWC27	13-Aug-2024	103 5		0.54	0.004	0.04 5	<1	17	<1	320	1610	0.139	13/08/2024	15.8 6	6.5	<1	<1	7.4 4	1.12	0.006	30	2.95	<0.00 1	0.036		4	4.3 1	34	406	<0.0 1	198	0.12 8	280	18	<1	14. 8	12. 8	939	0.408	
GWA32	15-Aug-2024	134 8		0.01	<0.00 1	0.05 4	612	12 8	<1	820	4000	0.003	15/08/2024	1.72	8.1	23	<1	1.4 9	<0.0 5	<0.00 1	19 4	0.05 5	0.002	0.002		7.2	7.2	27	216	<0.0 1	466	2.29	445	14	612	44. 6	43. 3	2510	<0.00 5	
GWC32	15-Aug-2024	141 2	<0.0 1	<0.00 1	0.03 5	133 0	11 9	<1	356	3470	0.002	15/08/2024	3.73	8	92	<1	4.8 9	0.09	<0.00 1	10 9	0.04 2	<0.00 1	0.001		6.8	6.8 5	56	221	<0.0 1	513	4.85	289	17. 5	133 0	42. 6	38. 6	2150	<0.00 5		
GWA34	13-Aug-2024	134 2		1.02	<0.00 1	0.02 6	311	15 2	<1	357	2970	0.019	13/08/2024	3.66	7.4	30	<1	2.1 9	0.33	<0.00 1	19 0	0.05 2	0.002	0.027		6.7	7.0 6	6	221	0.01	225	1.49	882	17. 5	311	34. 6	33. 2	2150	0.057	
GWC34	13-Aug-2024	134 9												Dry											2															
GWA36	08-Aug-2024	132 4												Dry											2															
GWC36	08-Aug-2024	133 5		0.05	<0.00 1	0.03	283	15 8	<1	413	3980	<0.00 1		7.9	6.2	17	<1	3.9 2	28.4	<0.00 1	16 3	2.05	0.002	0.012		6.5	6.5 3	38	15. 7	<0.0 1	524	1.06	151 0	18	283	48. 7	45. 1	2970	0.023	
GWC25	21-Aug-2024	102 0		0.14	<0.00 1	0.11 4	271	40	<1	265	1400	0.034	21/08/2024	26.2	7	26	<1	3.1 3	0.39	0.003	59	0.53 6	<0.00 1	0.02		6.6	6.6 4	8	84. 2	<0.0 1	166	0.47	111	19. 5	271	15. 2	14. 3	717	0.006	
PZ13	02-Aug-2024	115 1												Dry											2															
PZ20	21-Aug-2024	122 8		0.35	<0.00 1	0.02	355	37	<1	28	848	0.002		1.38	7.5	6	<1	2.5 8	0.41	<0.00 1	38	0.16 3	<0.00 1	0.003		7.5	7.5 2	14	65. 9	<0.0 1	99	0.31 7	61	15	355	9.1 5	9.6 4	492	0.005	

a Sample Location	Sampling Date	Sampling Time	Aluminium mg/L	Arsenic mg/L	Arsenic mg/L	Barium mg/L	Bicarbonate Alkalinity as CaCO3 mg/L	Calcium - Dissolved mg/L	Carbonate Alkalinity as CaCO3 mg/L	Chloride mg/L	Conductivity @ 25oC µS/cm	Copper mg/L	Data Download	Depth to Standpipe m	Dissolved Oxygen - Dissolved mg/L	Free Carbon Dioxide as CO2 mg/L	Hydroxide Alkalinity as CaCO3 mg/L	Ionic Balance %	Iron mg/L	Lead mg/L	Magnesium - Dissolved mg/L	Manganese mg/L	Molybdenum mg/L	Nickel mg/L	No Sample 1=Dry 2=Inadequate Vol 3=Not Stabilised 4=No access	pH pH Unit	pH Redox pH Unit	Potassium - Dissolved mg/L	Redox Potential mV	Selenium mg/L	Sodium - Dissolved mg/L	Strontium mg/L	Sulfate as SO4 - Turbidimetric mg/L	Temperature °C	Total Alkalinity as CaCO3 mg/L	Total Anions meq/L	Total Cations meq/L	Total Dissolved Solids @180°C - Dissolved mg/L	Zinc mg/L		
PZ21	21-Aug-2024	120 2		0.45	<0.00 1	0.01 3	277	24	<1	20	696	0.002		2.73	7.3	4	<1	3.1	0.24	0.001	18	0.11 2	<0.00 1	0.003		7.7	7.6 9	7	64. 2	<0.0 1	113	0.20 2	58	15	277	7.3 1	7.7 7	410	0.009		
PZ26	21-Aug-2024	114 0												Dry											1																
GWF1	21-Aug-2024	125 1																							4																
GWF2	21-Aug-2024	125 1																							1																
GWF3	21-Aug-2024	110 3		0.18	<0.00 1	0.06 1	780	19 9	<1	294	3610	0.002		18.1 6	7.2	30	<1	1.6 6	0.31	<0.00 1	26 6	1.64	0.001	0.006		6.8	6.8 6	37	92. 1	<0.0 1	297	1.85	976	21	780	44. 2	45. 7	2540	0.017		
GWF4	21-Aug-2024	125 1																							1																
GWF5	21-Aug-2024	113 3												Dry											2																
GWF7	21-Aug-2024	125 1																							1																
Barologger Office	21-Aug-2024	130 1											21/08/2024																												
GWA1	12-Sep-2024	112 2												Dry											1																
GWA2	12-Sep-2024	114 9	<0.0 1	0.45	0.002	0.04 8	95	28	<1	131	950	0.001		3.39	7.5	15	<1	3.4	1.8	0.001	42	0.42 2	<0.00 1	0.003		6.5	6.8 8	7	50. 2	<0.0 1	108	0.30 1	168	15	95	9.0 9	9.7 3	532	<0.00 5		
GWA3	13-Sep-2024	125 0												Dry											2																
GWA4	19-Sep-2024	105 5	<0.0 1	0.62	0.025	0.05 5	395	71	<1	210	1430	0.002		2.69	7.2	27	<1	2.4 5	11.1	<0.00 1	46	0.35 6	<0.00 1	0.012		7	7.0 6	16	249	<0.0 1	166	0.52 9	91	16	395	15. 7	15	816	0.006		
GWA5	10-Sep-2024	152 1	<0.0 1	0.13	0.002	0.03 6	560	54 3	<1	941	8140	0.001		2.16	9.3	12	<1	7.5 8	0.23	<0.00 1	68 8	0.06 2	0.002	0.005		7.5	7.6 2	26	201	<0.0 1	102 0	4.87	350 0	15. 5	560	111	129	7280	0.018		
GWA6	06-Sep-2024	120 3	<0.0 1	0.23	<0.00 1	0.05 6	585	24 4	<1	456	5190	<0.00 1		0.89	7.1	14	<1	0.3	0.53	<0.00 1	29 1	0.20 7	<0.00 1	0.004		7.4	7.3 8	17	190	<0.0 1	647	2.46	191 0	14. 5	585	64. 3	64. 7	4160	<0.00 5		
GWA7	10-Sep-2024	132 0												Dry											2																
GWA8	05-Sep-2024	114 9	<0.0 1	0.12	<0.00 1	0.00 9	368	91	<1	244	1840	<0.00 1		1.34	7.4	13	<1	0.7 1	0.35	<0.00 1	78	2.88	<0.00 1	0.005		7.2	7.1 1	11	202	<0.0 1	202	0.92 7	292	15	368	20. 3	20	1080	<0.00 5		
GWC1	12-Sep-2024	120 8	<0.0 1	0.04	<0.00 1	0.06 3	486	14 3	<1	509	3200	0.001		9.15	6.5	20	<1	0.6 4	0.21	<0.00 1	99	0.67 4	<0.00 1	0.003		7	7.4 4	26	56. 3	<0.0 1	429	1.4	485	17	486	34. 2	34. 6	1960	0.008		
GWC2	13-Sep-2024	130 2	<0.0 1	<0.0 1	<0.00 1	0.35 8	495	57	<1	118	1250	<0.00 1		2.35	7.8	9	<1	2	0.11	<0.00 1	27	0.01	<0.00 1	<0.00 1		7.6	7.9	26	41. 9	<0.0 1	186	0.50 8	3	16	495	13. 3	13. 8	665	<0.00 5		
GWC3	06-Sep-2024	123 5	<0.0 1	<0.0 1	<0.00 1	0.02 3	588	16 9	<1	333	3770	<0.00 1		2.26	7.8	21	<1	5.3 5	0.33	<0.00 1	16 4	0.63 2	0.002	0.149		7	7.0 8	45	208	<0.0 1	501	1.66	921	18	588	40. 3	44. 9	2690	<0.00 5		
GWC4	05-Sep-2024	101 3	<0.0 1	0.01	<0.00 1	0.03 5	643	17 7	<1	307	2410	<0.00 1		13.5 5	7	52	<1	0.5 3	1.66	<0.00 1	83	0.03 6	<0.00 1	<0.00 1		6.6	6.5 9	51	228	<0.0 1	217	1.93	222	19. 5	643	26. 1	26. 4	1520	0.006		
GWC5	05-Sep-2024	121 8	<0.0 1	<0.0 1	<0.00 1	0.19 3	251 0	27 1	<1	458	5570	0.005		5.25	6.4	50 2	<1	2	1.37	0.043	14 4	1.29	<0.00 1	0.024		6.6	6.6 3	89	228	<0.0 1	881	8.65	269	17. 5	251 0	68. 7	66	3440	0.016		
GWA10	13-Sep-2024	111 8	<0.0 1	0.34	0.011	0.03 6	384	11 6	<1	471	2890	0.023	13/09/2024	3.25	7.1	14	<1	0.7 8	6.19	<0.00 1	10 8	1.09	<0.00 1	0.005		7.1	7.5	1	70. 6	<0.0 1	393	0.89 1	497	14. 5	384	31. 3	31. 8	1760	<0.00 5		
GWC10	13-Sep-2024	114 5	<0.0 1	<0.00 1	<0.00 1	0.03 8	382	23 5	<1	380	3870	0.005	13/09/2024	2.69	9	10	<1	0.3 3	0.25	<0.00 1	13 4	0.06 1	<0.00 1	0.003		7.4	7.8	34	69. 5	<0.0 1	518	2.17	135 0	15	382	46. 4	46. 2	2780	<0.00 5		
GWA11	13-Sep-2024	101 5	<0.0 1	0.29	<0.00 1	0.02 1	365	33	<1	48	966	0.001		3.5	7.3	7	<1	4.8	0.51	<0.00 1	28	0.13 1	<0.00 1	0.001		7.7	7.9 6	11	59. 9	<0.0 1	150	0.37	54	14. 5	365	9.7 7	10. 8	516	<0.00 5		
GWC11	13-Sep-2024	105 0		0.03	<0.00 1	0.02 4	273	90	<1	260	2570	0.002	13/09/2024	6.35	8.2	16	<1	1.0 5	3.21	<0.00 1	89	1.01	<0.00 1	0.009		6.8	7.1	25	103	<0.0 1	359	0.82 5	706	16. 5	273	27. 5	28. 1	1620	0.011		
GWA12	19-Sep-2024	122 4												Dry											1																
GWC12	19-Sep-2024	124 1	0.02	0.02	<0.00 1	0.05 2	658	11 8	<1	227	2720	0.002	19/09/2024	6.53	6.3	15	<1	1.1 1	0.45	<0.00 1	50	0.22 4	0.002	0.004		7.4	7.5 7	27	218	<0.0 1	439	0.89	524	17. 5	658	30. 5	29. 8	1840	<0.00 5		
GWA14	19-Sep-2024	115 0												Dry											1																
GWC14	19-Sep-2024	120 7	0.02	0.02	<0.00 1	0.03 8	414	28 2	<1	274	3540	0.006	19/09/2024	3.04	6.9	8	<1	2.2	0.47	<0.00 1	12 0	0.21 4	0.002	0.006		7.6	7.7 2	36	212	<0.0 1	385	1.76	132 0	16. 5	414	43. 5	41. 6	2800	0.007		

a Sample Location	Sampling Date	Sampling Time	Aluminium mg/L	Arsenic mg/L	Arsenic mg/L	Barium mg/L	Bicarbonate Alkalinity as CaCO3 mg/L	Calcium - Dissolved mg/L	Carbonate Alkalinity as CaCO3 mg/L	Chloride mg/L	Conductivity @ 25oC µS/cm	Copper mg/L	Data Download	Depth to Standpipe m	Dissolved Oxygen - Dissolved mg/L	Free Carbon Dioxide as CO2 mg/L	Hydroxide Alkalinity as CaCO3 mg/L	Ionic Balance %	Iron mg/L	Lead mg/L	Magnesium - Dissolved mg/L	Manganese mg/L	Molybdenum mg/L	Nickel mg/L	No Sample 1=Dry 2=Inadequate Vol 3=Not Stabilised 4=No access	pH pH Unit	pH Redox pH Unit	Potassium - Dissolved mg/L	Redox Potential mV	Selenium mg/L	Sodium - Dissolved mg/L	Strontium mg/L	Sulfate as SO4 - Turbidimetric mg/L	Temperature °C	Total Alkalinity as CaCO3 mg/L	Total Anions meq/L	Total Cations meq/L	Total Dissolved Solids @180°C - Dissolved mg/L	Zinc mg/L			
GWA15	19-Sep-2024	111 5												Dry											2																	
GWC15	19-Sep-2024	113 4	0.02	0.03	<0.00 1	0.03 9	503	27 1	<1	336	3650	0.004	19/09/2024	4.49	8	13	<1	0.3 5	0.21	<0.00 1	12 8	0.01 6	0.001	0.004		7.3	7.5 6	39	213	<0.0 1	416	2.1	112 0	17	503	42. 8	43. 2	2810	<0.00 5			
GWC33	12-Sep-2024	100 2											12/09/2024	Dry											1																	
GWC26	12-Sep-2024	105 2		0.06	<0.00 1	0.21 4	553	28	<1	143	1510	0.007	12/09/2024	53.1 6	7.6	14	<1	2.9 2	0.36	<0.00 1	17	0.01 9	0.001	<0.00 1		7.2	7.6 3	17	12. 8	<0.0 1	307	0.36 5	27	20. 5	553	15. 6	16. 6	822	0.008			
GWA16	06-Sep-2024	134 9		0.1	<0.00 1	0.10 8	660	35 1	<1	547 0	1860 0	<0.00 1		2.25	7.5	20	<1	2.5 9	0.2	<0.00 1	54 6	0.16	0.001	0.004		7.1	7.1 6	16	214	<0.0 1	319 0	5.38	115 0	16. 5	660	191	202	1280 0	0.008			
GWC16	06-Sep-2024	144 1		0.51	<0.00 1	0.13 5	666	88	<1	387	2530	0.004		30.6 9	7.3	16	<1	0.8 4	3.47	0.004	43	0.04 2	<0.00 1	<0.00 1		7.2	7.2 6	24	205	<0.0 1	421	0.95 3	105	20. 5	666	26. 4	26. 8	1500	0.007			
GWC30	06-Sep-2024	110 5		0.03	<0.00 1	0.05 3	514	24 8	<1	454	2800	0.041	06/09/2024	29.5 6	7	32	<1	1.2	1.71	<0.00 1	13 2	0.18 3	<0.00 1	0.008		6.7	6.8 4	46	242	<0.0 1	161	2.6	365	20	514	30. 7	31. 4	1920	0.016			
GWC31	06-Sep-2024	112 6												Dry											2																	
GWC37	05-Sep-2024	135 8		0.33	0.018	0.03	185	12 9	<1	179	2440	0.012		25.0 4	6.8	37	<1	1.0 4	6.42	0.004	10 7	1.21	<0.00 1	0.01		6.2	6.3 5	52	246	<0.0 1	257	1.48	941	20. 5	185	28. 3	27. 8	1520	0.051			
GWC27	06-Sep-2024	100 3		0.57	0.003	0.04 2	<1	20	<1	314	1620	0.111	06/09/2024	15.7 6	7.1	<1	<1	0.3 8	1.6	0.006	32	2.88	<0.00 1	0.036		3.9	3.9 8	34	446	<0.0 1	224	0.14 4	264	18. 5	<1	14. 4	14. 2	1000	0.403			
GWA32	05-Sep-2024	110 0		<0.0 1	<0.00 1	0.05	632	14 8	<1	724	4010	0.004	05/09/2024	1.83	7.3	16	<1	2.2 2	<0.0 5	<0.00 1	19 1	0.08 3	0.002	0.002		7.2	7.3	21	192	<0.0 1	482	2.22	462	15	632	42. 7	44. 6	2540	0.006			
GWC32	05-Sep-2024	112 2		<0.0 1	<0.00 1	0.03 5	136 0	15 8	<1	318	3460	0.002	05/09/2024	3.78	7.2	68	<1	0.2 4	0.1	<0.00 1	11 0	0.05 8	<0.00 1	0.001		6.8	6.8 5	44	216	<0.0 1	536	4.71	261	18	136 0	41. 6	41. 4	2160	0.009			
GWA34	05-Sep-2024	125 6		1.16	<0.00 1	0.02 6	310	17 4	<1	343	2890	0.016	05/09/2024	3.69	7.6	17	<1	1.6 4	0.73	<0.00 1	18 8	0.05 2	0.002	0.031		6.7	6.7 8	5	221	0.01	246	1.35	864	17	310	33. 8	35	2130	0.064			
GWC34	05-Sep-2024	131 4		0.82	<0.00 1	0.12 4	147 0	73	<1	208	3990	0.017		19.5 3	6.4	61	<1	2.7 9	1.5	0.005	63	0.61 9	<0.00 1	0.076		7	7.0 7	20	219	<0.0 1	860	5.14	431	19	147 0	44. 2	46. 7	2670	0.068			
GWA36	13-Sep-2024	121 6												Dry											2																	
GWC36	13-Sep-2024	122 6		0.04	<0.00 1	0.01 9	267	15 2	<1	336	3960	<0.00 1		8	6.3	45	<1	1.2 4	31.5	<0.00 1	16 7	2.22	0.003	0.013		6.5	6.7 8	39	16. 3	0.01	524	1.19	151 0	18	267	46. 2	45. 1	2810	0.027			
GWC25	26-Sep-2024	102 9		1.08	0.002	0.12 7	264	36	<1	254	1390	0.04	26/09/2024	26.2 4	6.8	16	<1	3.9 7	1.45	0.009	56	0.75 5	<0.00 1	0.026		6.6	6.9 4	8	305	<0.0 1	167	0.50 7	124	19	264	15	13. 9	791	0.017			
PZ13	06-Sep-2024	125 8												Dry											2																	
PZ20	26-Sep-2024	121 4		0.87	<0.00 1	0.02 5	411	34	<1	31	945	0.003		1.83	7.2	4	<1	0.6 2	0.78	0.001	40	0.21 1	<0.00 1	0.004		7.5	7.9 7	16	257	<0.0 1	112	0.42 8	63	13. 5	411	10. 4	10. 3	614	0.018			
PZ21	26-Sep-2024	123 4		1.16	<0.00 1	0.01 6	319	21	<1	19	764	0.002		3.38	7.3	2	<1	0.3 2	0.7	<0.00 1	17	0.18 3	<0.00 1	0.004		7.7	8.0 9	7	254	<0.0 1	126	0.25 6	55	14	319	8.0 5	8.1 1	490	0.012			
PZ26	26-Sep-2024	115 4												Dry											1																	
GWF1	26-Sep-2024	130 5																																								
GWF2	26-Sep-2024	130 5																																								
GWF3	26-Sep-2024	110 9		0.43	<0.00 1	0.07 3	773	14 0	<1	292	3680	0.007		18.4 5	7	15	<1	3.6 7	1.34	0.003	26 8	1.75	0.001	0.009		6.8	7.2 6	38	278	<0.0 1	305	2	110 0	19. 5	773	46. 6	43. 3	2840	0.228			
GWF4	26-Sep-2024	130 5																																								
GWF5	26-Sep-2024	114 8												Dry											2																	
GWF7	26-Sep-2024	130 5																																								
Barologger Office	26-Sep-2024	131 0											26/09/2024																													
GWA1	25-Oct-2024	115 2												Dry											1																	

a Sample Location	Sampling Date	Sampling Time	Aluminium mg/L	Arsenic mg/L	Arsenic mg/L	Barium mg/L	Bicarbonate Alkalinity as CaCO3 mg/L	Calcium - Dissolved mg/L	Carbonate Alkalinity as CaCO3 mg/L	Chloride mg/L	Conductivity @ 25oC µS/cm	Copper mg/L	Data Download	Depth to Standpipe m	Dissolved Oxygen - Dissolved mg/L	Free Carbon Dioxide as CO2 mg/L	Hydroxide Alkalinity as CaCO3 mg/L	Ionic Balance %	Iron mg/L	Lead mg/L	Magnesium - Dissolved mg/L	Manganese mg/L	Molybdenum mg/L	Nickel mg/L	No Sample 1=Dry 2=Inadequate Vol 3=Not Stabilised 4=No access	pH pH Unit	pH Redox pH Unit	Potassium - Dissolved mg/L	Redox Potential mV	Selenium mg/L	Sodium - Dissolved mg/L	Strontium mg/L	Sulfate as SO4 - Turbidimetric mg/L	Temperature °C	Total Alkalinity as CaCO3 mg/L	Total Anions meq/L	Total Cations meq/L	Total Dissolved Solids @180°C - Dissolved mg/L	Zinc mg/L
GWA2	17-Oct-2024	112 2	<0.0 1	0.1	<0.00 1	0.04 2	92	28	<1	135	963	0.004		3.22	8.6	24	<1	1.2 7	1.03	<0.00 1	38	0.28 7	<0.00 1	0.002		6.6	6.4 5	7	279	<0.0 1	108	0.28 7	192	15	92	9.6 4	9.4	520	<0.00 5
GWA3	24-Oct-2024	125 9	<0.0 1	24.8	0.004	0.11 4	334	39	<1	283	1730	0.018		4.05	7.2	39	<1	7.1 8	17	0.012	43	1.34	0.002	0.043		6.8	6.9 2	2	185	<0.0 1	252	0.49 4	211	17. 5	334	19	16. 5	1670	0.042
GWA4	24-Oct-2024	101 5	<0.0 1	0.46	0.01	0.05 4	411	65	<1	195	1440	<0.00 1		2.74	6.5	30	<1	6.2 9	6.25	<0.00 1	43	0.39 9	<0.00 1	0.01		7	7.0 9	18	195	<0.0 1	157	0.59	108	16. 5	411	16	14. 1	846	<0.00 5
GWA5	16-Oct-2024	152 6	<0.0 1	0.22	0.002	0.04 5	591	52 6	<1	105 0	8670	0.003		2.12	9	12	<1	0.7 4	0.33	<0.00 1	66 1	0.08 6	0.001	0.006		7.5	7.6 5	27	240	<0.0 1	964	4.8	402 0	15	591	125	123	8110	0.044
GWA6	22-Oct-2024	133 2	<0.0 1	0.26	<0.00 1	0.05 2	562	27 2	<1	495	5550	0.002		0.93	6.1	20	<1	0.2 5	0.6	<0.00 1	29 2	0.16 2	<0.00 1	0.004		7.2	7.6 5	14	143	<0.0 1	811	2.18	229 0	16	562	72. 9	73. 2	4340	0.005
GWA7	16-Oct-2024	135 2												Dry											2														
GWA8	21-Oct-2024	143 2	<0.0 1	7.82	0.001	0.06 8	373	86	<1	247	1770	0.008		1.32	7	19	<1	5.3 2	8.79	0.006	76	8.36	<0.00 1	0.017		7.1	7.4	10	157	<0.0 1	196	0.81 6	142	16. 5	373	17. 4	19. 3	999	0.03
GWC1	17-Oct-2024	114 1	<0.0 1	0.03	<0.00 1	0.05 8	479	14 5	<1	479	3130	<0.00 1		9.29	8.7	19	<1	1.0 8	0.19	<0.00 1	94	0.73 7	<0.00 1	0.004		7	7.0 7	25	276	<0.0 1	403	1.38	449	16. 5	479	32. 4	33. 1	1920	0.006
GWC2	24-Oct-2024	132 8	<0.0 1	0.07	<0.00 1	0.41 6	497	52	<1	125	1220	<0.00 1		2.17	7	13	<1	5.2 7	0.15	<0.00 1	22	0.01 3	<0.00 1	<0.00 1		7.5	7.7 5	23	210	<0.0 1	164	0.54 9	1	17. 5	497	13. 5	12. 1	620	<0.00 5
GWC3	22-Oct-2024	135 1	<0.0 1	0.01	<0.00 1	0.02 8	557	20 5	<1	354	4110	<0.00 1		2.25	5.7	31	<1	0.6 9	4.93	<0.00 1	20 7	0.79 9	0.002	0.187		7	7.2 6	44	112	<0.0 1	539	1.84	151 0	19	557	52. 6	51. 8	3000	0.007
GWC4	21-Oct-2024	124 3	<0.0 1	0.03	<0.00 1	0.03 9	642	18 5	<1	335	2430	<0.00 1		13.5 5	6.7	60	<1	1.0 3	3.8	<0.00 1	84	0.06 1	<0.00 1	<0.00 1		6.6	6.8 7	50	160	<0.0 1	216	2.07	245	20	642	27. 4	26. 8	1420	0.006
GWC5	21-Oct-2024	145 8	<0.0 1	0.01	<0.00 1	0.18 1	235 0	31 3	<1	455	5420	0.002		5.34	6.1	34 0	<1	2.7 8	0.58	0.019	15 4	1.16	<0.00 1	0.022		6.6	6.8 2	90	174	<0.0 1	894	8.1	285	17. 5	235 0	65. 7	69. 5	3440	0.015
GWA10	17-Oct-2024	122 0	<0.0 1	0.16	0.009	0.03 4	394	11 6	<1	442	2870	0.009	17/10/2024	3.25	8.6	15	<1	0.1 7	6.41	<0.00 1	99	1.01	<0.00 1	0.004		7.1	7.1 2	1	272	<0.0 1	362	0.88 6	445	15	394	29. 6	29. 7	1780	0.006
GWC10	17-Oct-2024	125 1	<0.0 1	<0.00 1	0.04	0.04	382	25 0	<1	359	3850	0.009		2.75	8.6	21	<1	2.3 3	0.45	<0.00 1	13 1	0.26 9	<0.00 1	0.002		6.9	6.9 7	34	277	<0.0 1	495	2.22	124 0	16	382	43. 6	45. 6	2820	<0.00 5
GWA11	17-Oct-2024	133 7	<0.0 1	0.65	<0.00 1	0.02 2	365	31	<1	43	931	0.001		3.49	8.6	7	<1	2.7 2	0.84	<0.00 1	25	0.12 9	<0.00 1	0.002		7.6	7.6 2	10	264	<0.0 1	144	0.35 4	52	15. 5	365	9.5 9	10. 1	484	<0.00 5
GWC11	17-Oct-2024	140 2		0.06	<0.00 1	0.02 8	305	10 6	<1	280	2740	0.001	17/10/2024	5.42	8.8	53	<1	3.9 1	6.27	<0.00 1	10 0	1.4	<0.00 1	0.006		6.5	6.5 9	25	252	<0.0 1	378	0.95 6	687	17	305	28. 3	30. 6	1810	0.016
GWA12	24-Oct-2024	115 4												Dry											2														
GWC12	24-Oct-2024	121 5		0.02	<0.00 1	0.06 1	676	11 1	<1	191	2770	0.002		6.34	4.7	18	<1	0.6 8	2.72	<0.00 1	50	0.23	0.001	0.001		7.4	7.7 3	28	224	<0.0 1	471	1.07	595	18	676	31. 3	30. 8	1890	<0.00 5
GWA14	24-Oct-2024	111 4												Dry											2														
GWC14	24-Oct-2024	113 3		0.02	<0.00 1	0.02 9	426	27 0	<1	245	3520	0.004		3.12	6.2	9	<1	1.7 1	0.31	<0.00 1	12 5	0.21 9	0.002	0.008		7.6	7.9 2	38	208	<0.0 1	417	2.02	139 0	17	426	44. 4	42. 9	2760	0.006
GWA15	24-Oct-2024	103 5												Dry											2														
GWC15	24-Oct-2024	105 5		0.02	<0.00 1	0.04 4	519	26 4	<1	291	3650	0.003		4.95	7.8	15	<1	1.2 2	0.18	<0.00 1	13 3	0.01 1	<0.00 1	0.003		7.4	7.6 3	41	217	<0.0 1	450	2.42	131 0	17. 5	519	45. 8	44. 7	2840	<0.00 5
GWC33	25-Oct-2024	120 8												Dry											1														
GWC26	25-Oct-2024	112 4		0.24	<0.00 1	0.27 6	583	16	<1	156	1500	0.01		52.1 1	6.8	16	<1	2.7 4	0.69	0.002	10	0.03 6	<0.00 1	0.001		7.3	7.5 7	16	213	<0.0 1	313	0.38 2	23	19	583	16. 5	15. 6	802	0.021
GWA16	17-Oct-2024	105 8		1.05	<0.00 1	0.12 5	698	38 3	<1	561 0	1960 0	0.002		2.63	8.9	21	<1	5.7 8	1.38	0.001	60 0	0.29 1	0.002	0.004		7.1	7.2 4	17	242	<0.0 1	351 0	6.32	121 0	15. 5	698	197	222	1320 0	0.009
GWC16	17-Oct-2024	101 7		0.06	<0.00 1	0.12 1	659	84	<1	361	2510	0.002	17/10/2024	30.6 9	8.6	18	<1	1.2 2	1.71	0.002	44	0.03 2	<0.00 1	<0.00 1		7.2	7.2 3	25	239	<0.0 1	418	0.87 4	127	19	659	26	26. 6	1470	0.014
GWC30	22-Oct-2024	112 7		0.02	<0.00 1	0.03 7	524	19 7	<1	520	2840	0.028	22/10/2024	29.5 4	4.7	60	<1	2.4 1	4.43	<0.00 1	14 3	0.21 4	<0.00 1	0.002		6.6	6.8 4	44	185	<0.0 1	171	1.93	313	20. 5	524	31. 6	30. 2	1820	0.008
GWC31	22-Oct-2024	114 8												Dry											2														
Gwc37	22-Oct-2024	103 6		0.44	0.026	0.02 7	186	11 2	<1	180	2430	0.01		24.9 8	5.7	54	<1	2.1 4	7.75	0.002	10 6	1.1	<0.00 1	0.01		6.2	6.4 1	53	198	<0.0 1	249	1.22	906	20	186	27. 6	26. 5	1650	0.037
GWC27	22-Oct-2024	952		0.41	0.004	0.04 2	<1	12	<1	319	1660	0.034	22/10/2024	15.6 9	5.2	<1	<1	2.6 8	2.47	0.012	23	2.01	<0.00 1	0.016		3.5	3.6 4	31	530	<0.0 1	239	0.11 7	261	18	<1	14. 4	13. 7	911	0.252

a Sample Location	Sampling Date	Sampling Time	Aluminium mg/L	Arsenic mg/L	Arsenic mg/L	Barium mg/L	Bicarbonate Alkalinity as CaCO3 mg/L	Calcium - Dissolved mg/L	Carbonate Alkalinity as CaCO3 mg/L	Chloride mg/L	Conductivity @ 25oC µS/cm	Copper mg/L	Data Download	Depth to Standpipe m	Dissolved Oxygen - Dissolved mg/L	Free Carbon Dioxide as CO2 mg/L	Hydroxide Alkalinity as CaCO3 mg/L	Ionic Balance %	Iron mg/L	Lead mg/L	Magnesium - Dissolved mg/L	Manganese mg/L	Molybdenum mg/L	Nickel mg/L	No Sample 1=Dry 2=Inadequate Vol 3=Not Stabilised 4=No access	pH pH Unit	pH Redox pH Unit	Potassium - Dissolved mg/L	Redox Potential mV	Selenium mg/L	Sodium - Dissolved mg/L	Strontium mg/L	Sulfate as SO4 - Turbidimetric mg/L	Temperature °C	Total Alkalinity as CaCO3 mg/L	Total Anions meq/L	Total Cations meq/L	Total Dissolved Solids @180°C - Dissolved mg/L	Zinc mg/L	
GWA32	21-Oct-2024	133 8		<0.0 1	<0.00 1	0.04 5	619	98	<1	700	3810	0.002	21/10/2024	1.82	7.2	14	<1	1.3 1	<0.0 5	<0.00 1	18 2	0.15 8	0.003	0.002		7.2	7.5 4	21	279	<0.0 1	464	1.88	459	16	619	41. 7	40. 6	2320	0.005	
GWC32	21-Oct-2024	140 3		<0.0 1	<0.00 1	0.03 2	135 0	68	<1	314	3460	0.005	21/10/2024	3.8	6.9	62	<1	5.4 4	0.06	<0.00 1	11 1	0.04	<0.00 1	0.001		6.8	7.0 5	46	284	<0.0 1	546	4.38	285	18	135 0	41. 8	37. 4	2110	<0.00 5	
GWA34	22-Oct-2024	123 0		1.58	<0.00 1	0.02 5	324	15 8	<1	348	2930	0.017	22/10/2024	3.69	6.1	27	<1	3.2 2	1.01	<0.00 1	18 9	0.04 1	0.002	0.024		6.8	7.1 1	5	276	0.01	241	1.21	962	17	324	36. 3	34	2140	0.046	
GWC34	22-Oct-2024	124 0												Dry											2															
GWa36	17-Oct-2024	142 5												Dry											2															
GWc36	17-Oct-2024	143 5		0.04	0.002	0.01 9	274	15 9	<1	331	3900	<0.00 1		8.03	7.8	66	<1	2.6 4	45.1	<0.00 1	16 8	2.29	0.002	0.014		6.5	6.5 4	39	40. 5	0.01	527	1.23	137 0	19	274	43. 3	45. 7	2840	0.032	
GWC25	17-Oct-2024	150 0																							4															
PZ13	17-Oct-2024	141 5												Dry											2															
PZ20	17-Oct-2024	150 0																							4															
PZ21	17-Oct-2024	101 9																							4															
PZ26	17-Oct-2024	101 9																							4															
GWf1	17-Oct-2024	101 9																							4															
GWf2	17-Oct-2024	101 9																							4															
GWf3	17-Oct-2024	101 9																							4															
GWf4	17-Oct-2024	101 9																							4															
GWf5	17-Oct-2024	101 9																							4															
GWf7	17-Oct-2024	101 9																							4															
Barologger Office	30-Oct-2024	122 1											30/10/2024																											
GWA1	21-Nov-2024	105 8												Dry											1															
GWA2	06-Nov-2024	122 6	<0.0 1	0.6	0.001	0.04 7	87	27	<1	126	931	0.001		3.15	6.9	20	<1	1.1 4	2.29	<0.00 1	38	0.46 9	<0.00 1	0.004		6.5	6.8 5	7	209	<0.0 1	112	0.28 6	193	17. 5	87	9.3 1	9.5 2	608	<0.00 5	
GWA3	19-Nov-2024	115 8												Dry											2															
GWA4	19-Nov-2024	950	<0.0 1	0.56	0.009	0.04 9	371	59	<1	168	1340	0.002		2.71	6.6	12	<1	1.1 9	4.75	<0.00 1	42	0.36 8	<0.00 1	0.01		6.9	7.0 1	17	217	<0.0 1	161	0.51 1	97	16. 5	371	14. 2	13. 8	715	0.007	
GWA5	14-Nov-2024	115 5	<0.0 1	0.08	0.001	0.03 7	612	52 2	<1	108 0	8790	0.002		2.13	8.9	15	<1	1.2 8	0.17	<0.00 1	61 6	0.06 1	0.002	0.006		7.5	7.5 7	28	313	<0.0 1	994	4.83	360 0	18. 5	612	118	121	7960	0.02	
GWA6	19-Nov-2024	123 8	<0.0 1	4.36	0.002	0.08 5	487	22 6	<1	453	5230	0.008		0.89	6.5	10	<1	5.9 8	4.07	0.004	25 5	0.24 3	0.001	0.01		7.2	7.5	22	207	<0.0 1	715	2.24	238 0	18	487	72. 1	63. 9	4190	0.031	
GWA7	13-Nov-2024	124 4												Dry											2															
GWA8	07-Nov-2024	123 4	<0.0 1	9.01	0.003	0.11 2	380	90	<1	224	1740	0.016		1.5	7.6	47	<1	0.7 9	10.5	0.013	76	9.17	<0.00 1	0.025		7.1	7.1 1	10	232	0.01	196	0.88 5	255	18	380	19. 2	19. 5	1010	0.04	
GWC1	06-Nov-2024	124 8	<0.0 1	0.03	<0.00 1	0.05 1	408	11 0	<1	421	2540	<0.00 1		9.15	5.8	24	<1	1.0 2	0.26	<0.00 1	80	0.85 4	<0.00 1	0.004		7	7.3	21	206	<0.0 1	346	1.14	394	18. 5	408	28. 2	27. 7	1790	<0.00 5	
GWC2	19-Nov-2024	120 8	<0.0 1	0.37	<0.00 1	0.41 5	491	53	<1	129	1240	0.001		2.47	7.2	8	<1	0.8 5	0.41	<0.00 1	24	0.10 9	<0.00 1	0.002		7.3	7.4 9	25	205	<0.0 1	184	0.54 4	2	18	491	13. 5	13. 3	748	<0.00 5	
GWC3	19-Nov-2024	125 7	<0.0 1	0.07	<0.00 1	0.03 4	539	18 9	<1	345	4120	<0.00 1		2.11	6.9	14	<1	4.3 9	0.81	<0.00 1	19 8	1.3	0.002	0.21		7	7.1 6	47	219	<0.0 1	514	2.01	160 0	20	539	53. 8	49. 3	3140	0.016	
GWC4	07-Nov-2024	102 9	<0.0 1	0.01	<0.00 1	0.03 6	654	19 7	<1	313	2400	<0.00 1		13.5 8	8.4	22 2	<1	1.7 4	2.21	<0.00 1	85	0.03 9	<0.00 1	<0.00 1		6.6	6.6 7	50	234	<0.0 1	221	1.88	234	21. 5	654	26. 8	27. 7	1480	0.006	

a Sample Location	Sampling Date	Sampling Time	Aluminium mg/L	Arsenic mg/L	Arsenic mg/L	Barium mg/L	Bicarbonate Alkalinity as CaCO3 mg/L	Calcium - Dissolved mg/L	Carbonate Alkalinity as CaCO3 mg/L	Chloride mg/L	Conductivity @ 25oC µS/cm	Copper mg/L	Data Download	Depth to Standpipe m	Dissolved Oxygen - Dissolved mg/L	Free Carbon Dioxide as CO2 mg/L	Hydroxide Alkalinity as CaCO3 mg/L	Ionic Balance %	Iron mg/L	Lead mg/L	Magnesium - Dissolved mg/L	Manganese mg/L	Molybdenum mg/L	Nickel mg/L	No Sample 1=Dry 2=Inadequate Vol 3=Not Stabilised 4=No access	pH pH Unit	pH Redox pH Unit	Potassium - Dissolved mg/L	Redox Potential mV	Selenium mg/L	Sodium - Dissolved mg/L	Strontium mg/L	Sulfate as SO4 - Turbidimetric mg/L	Temperature °C	Total Alkalinity as CaCO3 mg/L	Total Anions meq/L	Total Cations meq/L	Total Dissolved Solids @180°C - Dissolved mg/L	Zinc mg/L		
GWC5	07-Nov-2024	1304	<0.01	0.02	<0.001	0.185	2550	352	<1	466	5510	0.002		5.33	6.8	907	<1	2.81	0.26	0.007	161	1.14	<0.001	0.022		6.6	6.62	92	240	<0.01	934	8.63	272	19	2550	69.8	73.8	3670	0.009		
GWA10	06-Nov-2024	1118	<0.01	0.09	0.004	0.034	407	114	<1	477	2790	0.004	06/11/2024	3.34	6.3	18	<1	0.61	2.53	<0.001	104	1.1	<0.001	0.004		7.1	7.49	1	196	<0.01	382	0.9	465	17	407	31.3	30.9	1990	<0.005		
GWC10	06-Nov-2024	1144		0.01	<0.001	0.042	398	236	<1	355	3760	0.008	06/11/2024	3.03	6.5	24	<1	0.18	1.61	<0.001	133	0.286	<0.001	0.003		6.9	7.28	33	204	<0.01	502	2.27	1310	18	398	45.2	45.4	3340	<0.005		
GWA11	06-Nov-2024	1012	<0.01	0.2	<0.001	0.026	491	30	<1	56	1180	<0.001		3.53	6.1	8	<1	2.19	0.45	<0.001	26	0.161	<0.001	<0.001		7.6	7.88	11	190	<0.01	222	0.393	77	491	13	13.6	707	<0.005			
GWC11	06-Nov-2024	1047		0.04	<0.001	0.031	315	102	<1	286	2690	0.002	06/11/2024	6.36	6.5	47	<1	2.23	3.25	<0.001	99	1.46	<0.001	0.007		6.5	6.91	25	215	<0.01	383	0.93	713	18.5	315	29.2	30.5	2050	0.014		
GWA12	19-Nov-2024	1119												Dry											2																
GWC12	19-Nov-2024	1137		0.02	<0.001	0.053	642	130	<1	193	2800	0.004	19/11/2024	6.7	5.1	11	<1	2.29	2.27	<0.001	57	0.218	0.001	<0.001		7.4	7.73	29	206	<0.01	500	1	667	18	642	32.2	33.7	1900	<0.005		
GWA14	19-Nov-2024	1046												Dry											2																
GWC14	19-Nov-2024	1101		0.02	<0.001	0.044	406	289	<1	239	3570	0.004	19/11/2024	3.2	6.8	7	<1	1.7	0.27	<0.001	139	0.193	0.002	0.005		7.6	7.89	39	205	<0.01	439	1.79	1570	17.5	406	47.5	46	2810	0.006		
GWA15	19-Nov-2024	1011												Dry											2																
GWC15	19-Nov-2024	1028		0.01	<0.001	0.042	489	272	<1	288	3750	0.003	19/11/2024	4.9	7.6	10	<1	1.85	0.14	<0.001	147	0.013	<0.001	0.002		7.3	7.61	41	213	<0.01	474	2.29	1500	17	489	49.1	47.3	2900	<0.005		
GWC33	19-Nov-2024	1515												Dry											1																
GWC26	21-Nov-2024	1028		0.19	<0.001	0.246	584	26	<1	150	1510	0.006	21/11/2024	51.72	8	16	<1	4.88	0.64	0.003	13	0.029	<0.001	0.001		7.2	7.28	14	142	<0.01	278	0.383	21	20	584	16.3	14.8	790	0.012		
GWA16	19-Nov-2024	1414												Dry											2																
GWC16	19-Nov-2024	1441		0.09	<0.001	0.117	624	66	<1	327	2250	0.003		30.43	7.2	11	<1	4.04	4.01	0.002	40	0.038	<0.001	<0.001		7.2	7.47	22	210	<0.01	422	0.677	88	21	624	23.5	25.5	1330	0.012		
GWC30	21-Nov-2024	1316		0.04	<0.001	0.054	523	215	<1	499	2830	0.044	21/11/2024	29.53	6.8	68	<1	0.78	5.3	<0.001	140	0.228	<0.001	0.003		6.6	6.67	44	242	<0.01	169	2.1	321	20.5	523	31.2	30.7	1970	0.018		
GWC31	21-Nov-2024	1340												Dry											2																
GWC37	07-Nov-2024	1433		0.34	0.024	0.029	190	124	<1	171	2400	0.007		24.91	7.3	151	<1	2.71	8.88	0.002	106	1.15	<0.001	0.007		6.2	6.32	54	88.1	<0.01	244	1.41	810	21.5	190	25.5	26.9	1760	0.042		
GWC27	14-Nov-2024	1304		0.38	0.004	0.053	<1	14	<1	309	1630	0.037	14/11/2024	15.74	7.7	<1	<1	0.45	2.47	0.01	25	2.25	<0.001	0.02		3.6	3.75	31	508	<0.01	238	0.126	243	19.5	<1	13.8	13.9	848	0.296		
GWA32	07-Nov-2024	1127	<0.01	<0.001	0.043	630	140	<1	701	3770	0.003	07/11/2024	2.1	7.2	51	<1	0.12	<0.005	<0.001	179	0.209	0.003	<0.001		7.2	7.35	22	161	<0.01	443	2.01	446	18.5	630	41.6	41.6	2500	<0.005			
GWC32	07-Nov-2024	1200	<0.01	<0.001	0.034	1390	162	<1	308	3420	0.004		3.83	6.4	298	<1	1.47	0.14	0.002	109	0.037	<0.001	<0.001		6.7	6.86	46	188	<0.01	518	4.36	265	20	1390	42	40.8	2170	<0.005			
GWA34	07-Nov-2024	1344	1.23	<0.001	0.026	341	173	<1	335	2910	0.015	07/11/2024	3.72	7.9	59	<1	1.17	0.96	<0.001	184	0.048	0.002	0.022		6.8	6.9	5	192	0.01	232	1.3	814	19	341	33.2	34	2130	0.047			
GWC34	07-Nov-2024	1358												Dry											2																
GWA36	19-Nov-2024	1339												Dry											2																
GWC36	19-Nov-2024	1351		0.04	0.004	0.021	252	162	<1	347	3830	<0.001		8.21	5.7	21	<1	3.6	57.6	0.001	177	2.35	0.004	0.016		6.4	6.6	39	62.9	0.03	535	1.2	1710	20	252	50.4	46.9	2860	0.037		
GWC25	05-Dec-2024	949		0.26	<0.001	0.12	236	35	<1	249	1400	0.034	05/12/2024	27.05	7.4	39	<1	5.65	0.5	0.003	54	0.539	<0.001	0.026		6.5	6.85	7	182	<0.01	145	0.508	118	20	236	14.2	12.7	781	0.012		
PZ13	06-Nov-2024	1305												Dry											2																
PZ20	05-Dec-2024	1129		0.89	0.001	0.024	256	25	<1	23	691	0.002		1.37	7.4	15	<1	3.85	1.6	0.002	28	0.488	<0.001	0.008		7.4	7.52	13	172	<0.01	75	0.29	41	19	256	6.62	7.15	378	0.012		
PZ21	05-Dec-2024	1156		4.47	0.002	0.027	283	27	<1	20	771	0.004		2.41	7	14	<1	3.6	3.24	0.003	20	0.156	0.001	0.007		7.5	7.72	8	183	<0.01	112	0.274	62	18	283	7.51	8.07	556	0.019		
PZ26	05-Dec-2024	1253												Dry											1																

a Sample Location	Sampling Date	Sampling Time	Aluminium mg/L	Arsenic mg/L	Arsenic mg/L	Barium mg/L	Bicarbonate Alkalinity as CaCO3 mg/L	Calcium - Dissolved mg/L	Carbonate Alkalinity as CaCO3 mg/L	Chloride mg/L	Conductivity @ 25oC µS/cm	Copper mg/L	Data Download	Depth to Standpipe m	Dissolved Oxygen - Dissolved mg/L	Free Carbon Dioxide as CO2 mg/L	Hydroxide Alkalinity as CaCO3 mg/L	Ionic Balance %	Iron mg/L	Lead mg/L	Magnesium - Dissolved mg/L	Manganese mg/L	Molybdenum mg/L	Nickel mg/L	No Sample 1=Dry 2=Inadequate Vol 3=Not Stabilised 4=No access	pH pH Unit	pH Redox pH Unit	Potassium - Dissolved mg/L	Redox Potential mV	Selenium mg/L	Sodium - Dissolved mg/L	Strontium mg/L	Sulfate as SO4 - Turbidimetric mg/L	Temperature °C	Total Alkalinity as CaCO3 mg/L	Total Anions meq/L	Total Cations meq/L	Total Dissolved Solids @180°C - Dissolved mg/L	Zinc mg/L				
GWF1	05-Dec-2024	1305																																									
GWF2	05-Dec-2024	1305																																									
GWF3	05-Dec-2024	1034		0.15	<0.001	0.059	659	173	<1	227	3200	0.002		18.05	6.9	30	<1	4.47	0.71	<0.001	229	1.59	0.002	0.006		6.8	7.01	37	203	<0.001	250	1.65	786	21.5	659	35.9	39.3	2220	0.025				
GWF4	05-Dec-2024	1305																																									
GWF5	05-Dec-2024	1305																																									
GWF7	05-Dec-2024	1305																																									
Barologger Office	07-Nov-2024	1500											29/11/2024																														
GWA1	13-Dec-2024	1239												Dry											1																		
GWA2	06-Dec-2024	1041	<0.001	1.34	0.002	0.058	88	29	<1	130	981	0.002		3.14	7.4	20	<1	0.95	2.01	0.002	39	0.438	<0.001	0.004		6.4	6.67	8	224	<0.001	113	0.364	218	18.5	88	9.96	9.78	639	<0.005				
GWA3	17-Dec-2024	1223												Dry											2																		
GWA4	17-Dec-2024	939	<0.001	0.08	0.009	0.057	393	80	<1	193	1530	<0.001		2.64	6.1	12	<1	2.1	5.38	<0.001	48	0.415	<0.001	0.009		6.9	7.1	18	230	<0.001	176	0.62	101	18	393	15.4	16	856	<0.005				
GWA5	10-Dec-2024	1447	<0.001	0.1	0.001	0.035	664	569	<1	1060	8680	0.001		1.87	9.1	15	<1	4.27	0.26	<0.001	656	0.066	0.001	0.006		7.4	7.65	31	222	<0.001	1030	4.94	3570	20.5	664	117	128	7990	0.021				
GWA6	13-Dec-2024	1146	<0.001	0.09	0.001	0.058	643	261	<1	444	5270	<0.001		1.01	6.9	8	<1	3.66	0.4	<0.001	283	0.373	0.001	0.004		7.3	8.04	20	242	<0.001	683	2.42	2220	20.5	643	71.6	66.5	4300	0.007				
GWA7	10-Dec-2024	1225												Dry											2																		
GWA8	12-Dec-2024	1414	<0.001	1.19	<0.001	0.066	387	85	<1	245	1780	0.004		1.45	6.5	5	<1	3.37	1.44	0.005	75	9.34	<0.001	0.01		7.1	7.84	10	238	<0.001	196	0.857	283	19	387	20.5	19.2	1060	0.012				
GWC1	06-Dec-2024	1101	<0.001	0.02	<0.001	0.055	396	114	<1	424	2610	<0.001		9.02	7.4	12	<1	3.07	0.69	<0.001	78	1.11	<0.001	0.004		7	7.12	21	244	<0.001	337	1.25	440	18.5	396	29	27.3	1640	0.008				
GWC2	17-Dec-2024	1235	<0.001	0.04	<0.001	0.385	468	61	<1	117	1240	0.002		2.42	6.5	9	<1	1.95	0.95	<0.001	21	0.089	<0.001	0.001		7.2	7.37	25	222	<0.001	178	0.513	<1	20	468	12.6	13.2	677	<0.005				
GWC3	13-Dec-2024	1204	<0.001	<0.001	<0.001	0.027	570	206	<1	326	3980	<0.001		2.13	6.7	7	<1	3.92	0.49	<0.001	197	0.87	0.001	0.177		7	7.82	47	243	<0.001	509	1.91	1600	20.5	570	53.9	49.8	2990	0.007				
GWC4	13-Dec-2024	1109	<0.001	<0.001	<0.001	0.033	640	191	<1	331	2400	<0.001		13.6	6.5	15	<1	1.14	2.62	<0.001	84	0.036	<0.001	<0.001		6.6	7.27	51	259	<0.001	222	1.88	284	21	640	28	27.4	1450	<0.005				
GWC5	12-Dec-2024	1343	<0.001	<0.001	<0.001	0.197	2520	331	<1	488	5530	0.001		5.3	5.9	553	<1	1.2	0.06	<0.001	157	1.26	<0.001	0.022		6.6	6.87	92	273	<0.001	932	7.97	312	18.5	2520	70.6	72.3	3650	0.012				
GWA10	06-Dec-2024	1236	<0.001	0.06	0.004	0.034	398	110	<1	474	2880	0.004	06/12/2024	3.24	7.2	11	<1	5.25	1.73	<0.001	95	1.03	<0.001	0.004		7.1	7.2	1	237	<0.001	361	0.955	525	18.5	398	32.2	29	1860	<0.005				
GWC10	06-Dec-2024	1306	<0.001	<0.001	<0.001	0.043	386	240	<1	372	3890	0.006		2.36	7.4	14	<1	0.4	1.35	<0.001	125	0.26	<0.001	0.002		6.9	7.06	31	239	<0.001	474	2.45	1240	19	386	44	43.7	2960	<0.005				
GWA11	06-Dec-2024	1142	<0.001	0.9	<0.001	0.027	410	31	<1	40	996	0.002		3.47	6.9	5	<1	1.36	0.93	0.001	25	0.143	<0.001	0.002		7.7	7.72	10	225	<0.001	158	0.413	54	18.5	410	10.4	10.7	554	<0.005				
GWC11	06-Dec-2024	1208		0.04	<0.001	0.031	308	108	<1	299	2760	0.002	06/12/2024	6.42	7.4	26	<1	6.51	2.37	<0.001	97	1.49	<0.001	0.008		6.5	6.69	25	247	<0.001	368	1.02	942	19.5	308	34.2	30	1920	0.016				
GWA12	17-Dec-2024	1140												Dry											2																		
GWC12	17-Dec-2024	1200	<0.001	<0.001	<0.001	0.051	600	137	<1	208	2880	<0.001	19/12/2024	6.69	6	10	<1	2.09	1.75	<0.001	53	0.237	<0.001	<0.001		7.4	7.66	28	224	<0.001	465	1.07	623	19	600	30.8	32.1	1920	<0.005				
GWA14	17-Dec-2024	1057												Dry											2																		
GWC14	17-Dec-2024	1114	<0.001	<0.001	<0.001	0.026	380	305	<1	259	3620	<0.001	19/12/2024	3.31	6.9	6	<1	3.42	0.11	<0.001	124	0.21	0.002	0.006		7.6	7.75	37	221	<0.001	396	2	1240	19.5	380	40.7	43.6	2800	<0.005				
GWA15	17-Dec-2024	955												Dry											2																		
GWC15	17-Dec-2024	1040	<0.001	<0.001	<0.001	0.045	476	318	<1	304	3890	<0.001	19/12/2024	5.12	7.6	11	<1	1.73	0.37	<0.001	140	0.07	<0.001	0.001		7.1	7.32	41	233	<0.001	446	2.54	1510	18.5	476	49.5	47.8	2990	<0.005				

a Sample Location	Sampling Date	Sampling Time	Aluminium mg/L	Arsenic mg/L	Arsenic mg/L	Barium mg/L	Bicarbonate Alkalinity as CaCO3 mg/L	Calcium - Dissolved mg/L	Carbonate Alkalinity as CaCO3 mg/L	Chloride mg/L	Conductivity @ 25oC µS/cm	Copper mg/L	Data Download	Depth to Standpipe m	Dissolved Oxygen - Dissolved mg/L	Free Carbon Dioxide as CO2 mg/L	Hydroxide Alkalinity as CaCO3 mg/L	Ionic Balance %	Iron mg/L	Lead mg/L	Magnesium - Dissolved mg/L	Manganese mg/L	Molybdenum mg/L	Nickel mg/L	No Sample 1=Dry 2=Inadequate Vol 3=Not Stabilised 4=No access	pH pH Unit	pH Redox pH Unit	Potassium - Dissolved mg/L	Redox Potential mV	Selenium mg/L	Sodium - Dissolved mg/L	Strontium mg/L	Sulfate as SO4 - Turbidimetric mg/L	Temperature °C	Total Alkalinity as CaCO3 mg/L	Total Anions meq/L	Total Cations meq/L	Total Dissolved Solids @180°C - Dissolved mg/L	Zinc mg/L			
GWC33	06-Dec-2024	1420												Dry											1																	
GWC26	13-Dec-2024	1309		0.02	<0.001	0.222	560	30	23	162	1480	<0.001	13/12/2024	51	7	4	<1	1.53	0.24	<0.001	14	0.021	<0.001	0.001		7.2	8.21	16	232	<0.01	302	0.366	23	22	583	16.7	16.2	854	<0.005			
GWA16	06-Dec-2024	941												Dry											2																	
GWC16	06-Dec-2024	1005		0.03	<0.001	0.106	614	54	<1	326	2160	0.001	06/12/2024	29.88	7.1	12	<1	3.35	1.13	<0.001	25	0.034	<0.001	<0.001		7.2	7.29	20	234	<0.01	370	0.702	66	22	614	22.8	21.4	1240	<0.005			
GWC30	12-Dec-2024	1158		0.02	<0.001	0.043	535	223	<1	529	2880	0.033	12/12/2024	29.41	6.3	11	<1	1.18	5.05	<0.001	144	0.242	<0.001	0.004		6.6	7.32	45	260	<0.01	175	2.13	331	22	535	32.5	31.7	2030	0.01			
GWC31	12-Dec-2024	1215												Dry											2																	
GWC37	12-Dec-2024	1117		0.1	0.028	0.023	189	129	<1	192	2420	0.004		24.94	6.2	9	<1	0.32	7.18	<0.001	107	1.12	<0.001	0.007		6.2	6.97	51	270	<0.01	248	1.32	863	21	189	27.2	27.3	1760	0.034			
GWC27	12-Dec-2024	1035		0.38	0.003	0.047	<1	17	<1	330	1600	0.043	12/12/2024	15.78	6.8	<1	<1	5.62	1.87	0.008	24	2.25	<0.001	0.018		3.9	4.14	30	462	<0.01	237	0.107	300	19.5	<1	15.6	13.9	904	0.279			
GWA32	13-Dec-2024	1001		<0.01	<0.001	0.042	560	139	<1	670	3680	<0.001	13/12/2024	1.96	7.4	6	<1	2	<0.05	<0.001	179	0.139	0.004	0.002		7.3	8.06	22	289	<0.01	454	1.92	492	18.5	560	40.3	42	2440	<0.005			
GWC32	13-Dec-2024	1032		0.03	<0.001	0.037	1290	174	<1	316	3450	0.012	13/12/2024	3.84	4.3	28	<1	3.64	1.94	0.005	115	0.083	<0.001	0.001		6.6	7.07	47	309	<0.01	570	4.33	305	19	1290	41	44.1	2160	0.052			
GWA34	12-Dec-2024	1302		1.08	<0.001	0.025	351	186	<1	343	2940	0.021	12/12/2024	3.77	7.5	5	<1	0.82	1.36	<0.001	189	0.092	0.002	0.024		6.8	7.66	5	298	0.01	247	1.3	942	19	351	36.3	35.7	2280	0.051			
GWC34	12-Dec-2024	1310												Dry											2																	
GWA36	06-Dec-2024	1342												Dry											2																	
GWC36	06-Dec-2024	1349		0.02	0.002	0.019	287	148	<1	372	3900	<0.001		8.05	6.6	28	<1	1.59	33.5	<0.001	154	2.35	0.001	0.015		6.5	6.57	35	29.2	0.03	487	1.31	1310	20.5	287	43.5	42.1	2880	0.026			
GWC25	19-Dec-2024	1028		0.15	<0.001	0.108	268	37	<1	248	1410	0.014	19/12/2024	27.05	8.1	35	<1	5.61	0.35	0.002	56	0.874	<0.001	0.022		6.5	6.66	6	185	<0.01	154	0.413	122	20	268	14.9	13.3	842	0.007			
PZ13	17-Dec-2024	1305												Dry											2																	
PZ20	19-Dec-2024	1159		0.76	0.002	0.033	387	33	<1	27	886	0.003		1.95	7.6	7	<1	1.12	1.47	0.001	36	0.868	<0.001	0.006		7.5	7.5	13	179	<0.01	97	0.317	42	19	387	9.37	9.16	598	0.012			
PZ21	19-Dec-2024	1216		0.96	<0.001	0.016	345	29	<1	22	825	0.003		3.23	7.8	5	<1	3.44	0.6	<0.001	19	0.136	<0.001	0.003		7.6	7.66	6	179	<0.01	122	0.242	75	18.5	345	9.08	8.47	624	0.009			
PZ26	19-Dec-2024	1234												Dry											1																	
GWF1	19-Dec-2024	1246																																								
GWF2	19-Dec-2024	1246																																								
GWF3	19-Dec-2024	1116		0.14	<0.001	0.052	747	187	<1	254	3460	0.004		18.22	8.4	37	<1	0.38	0.46	0.001	246	1.46	<0.001	0.006		6.8	6.93	32	212	<0.01	267	1.48	972	21	747	42.3	42	2850	0.034			

Groundwater Review