

Item 1: Department of Education World War II Roll of Honour For the Teachers Who Gave Their Lives



Item 2: Hereford House Reunion Club Roll of Honour



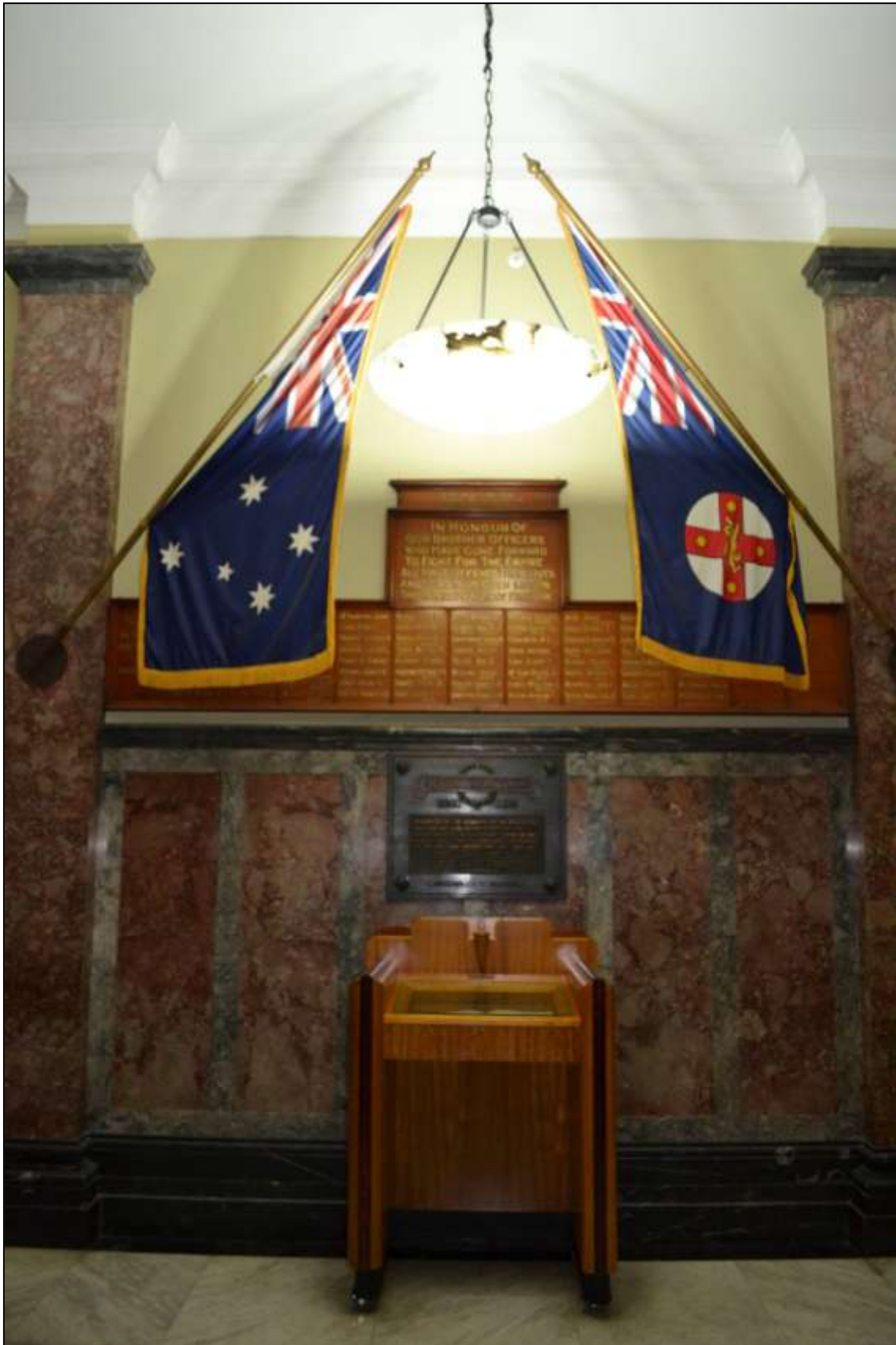
Item 3: NSW Department of Education Teachers and Trainees World War II Honor Roll



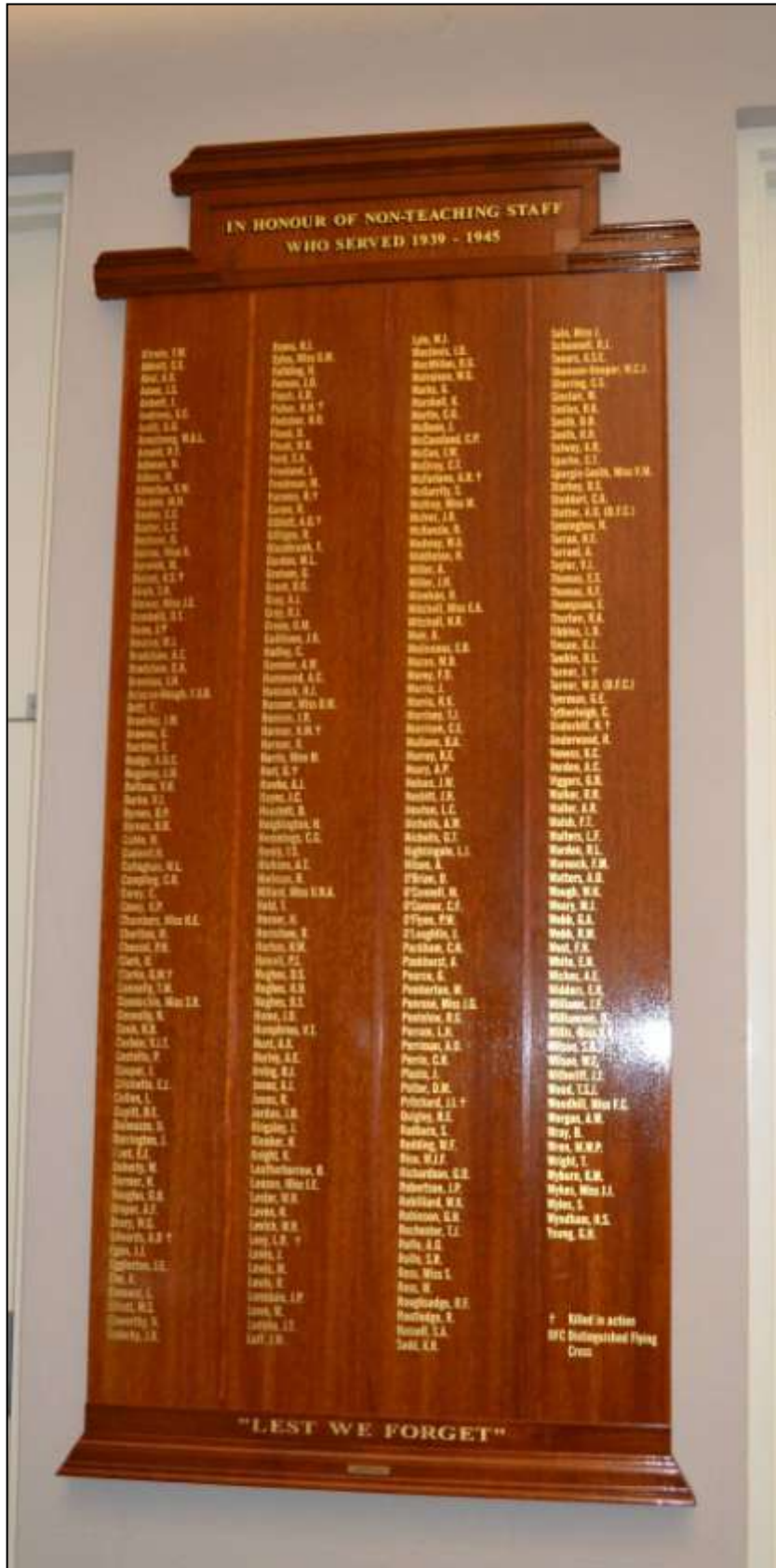
Item 4: Department of Education Head Office and Painting & Repair Staff World War II Plaque



Items 5 & 6 : Department of Education Brother Officers World War 1 Honour Board and the book of Remembrance



Item 7: NSW Department of Education Non-Teaching Staff World War II Honour Roll



Item 8: NSW Department of School Education Officers Roll of Honour



Item 10: Book Cabinet



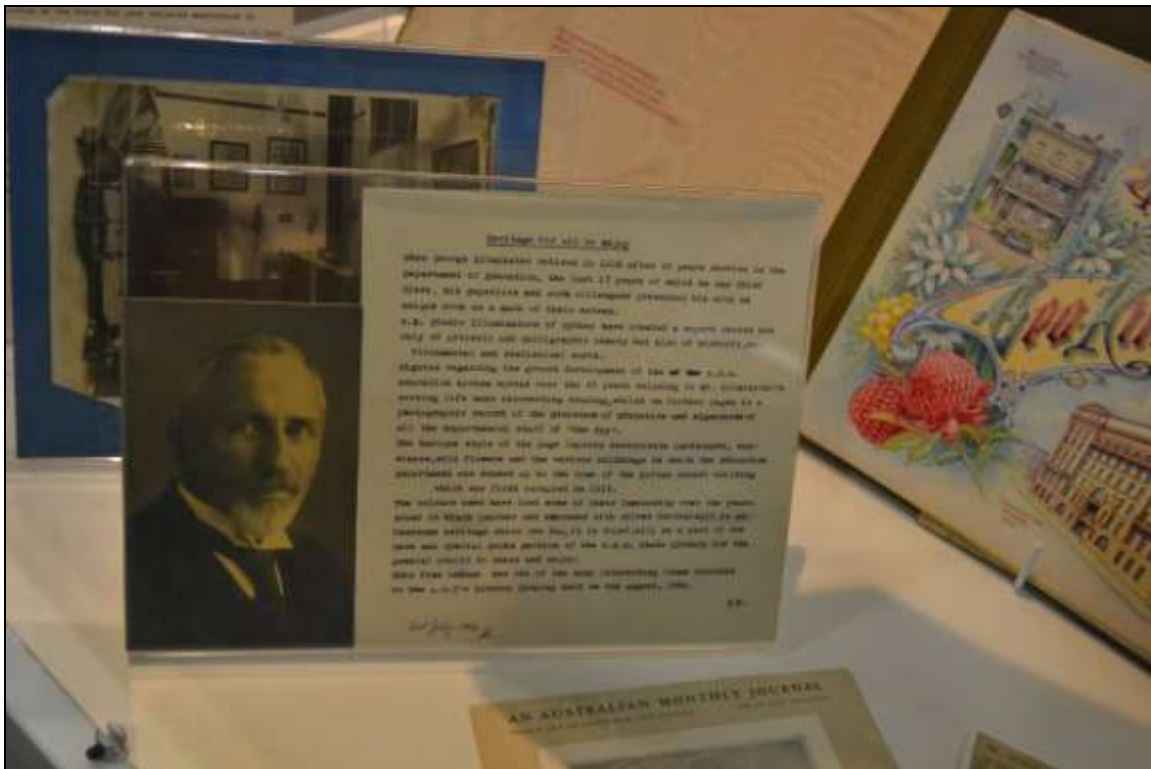
Item 11: Buffet

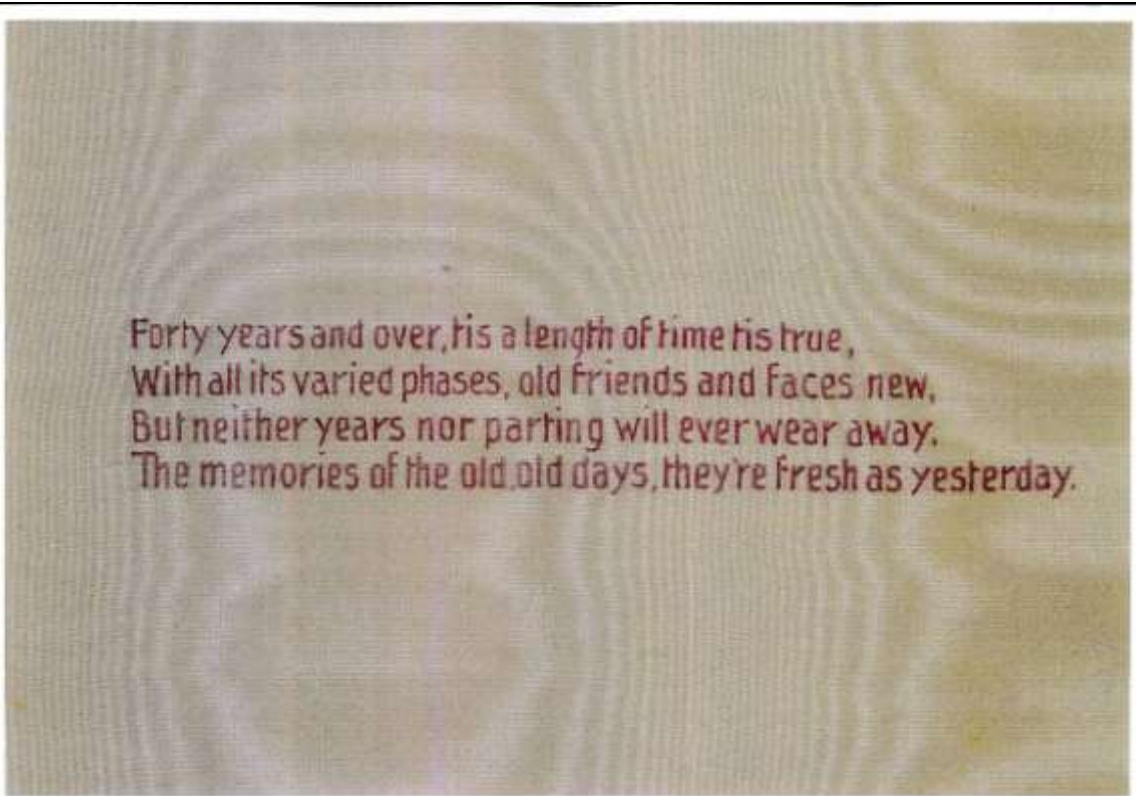


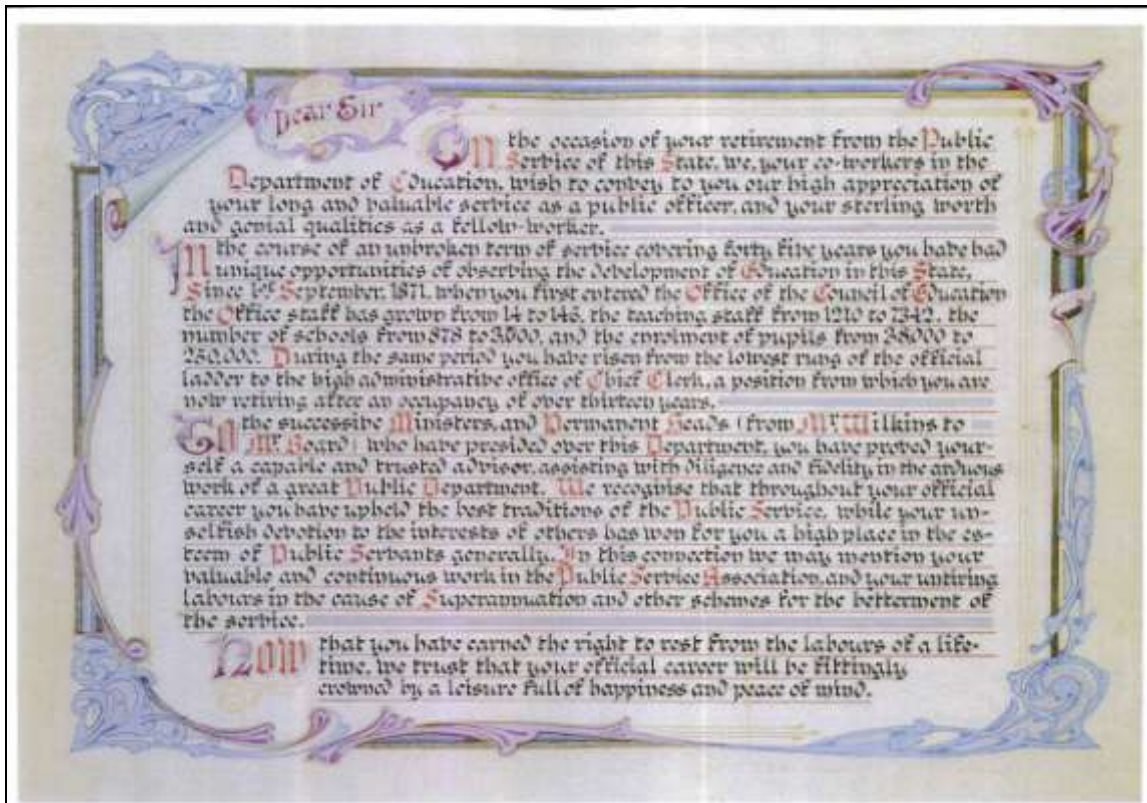
Item 12: Cabinet

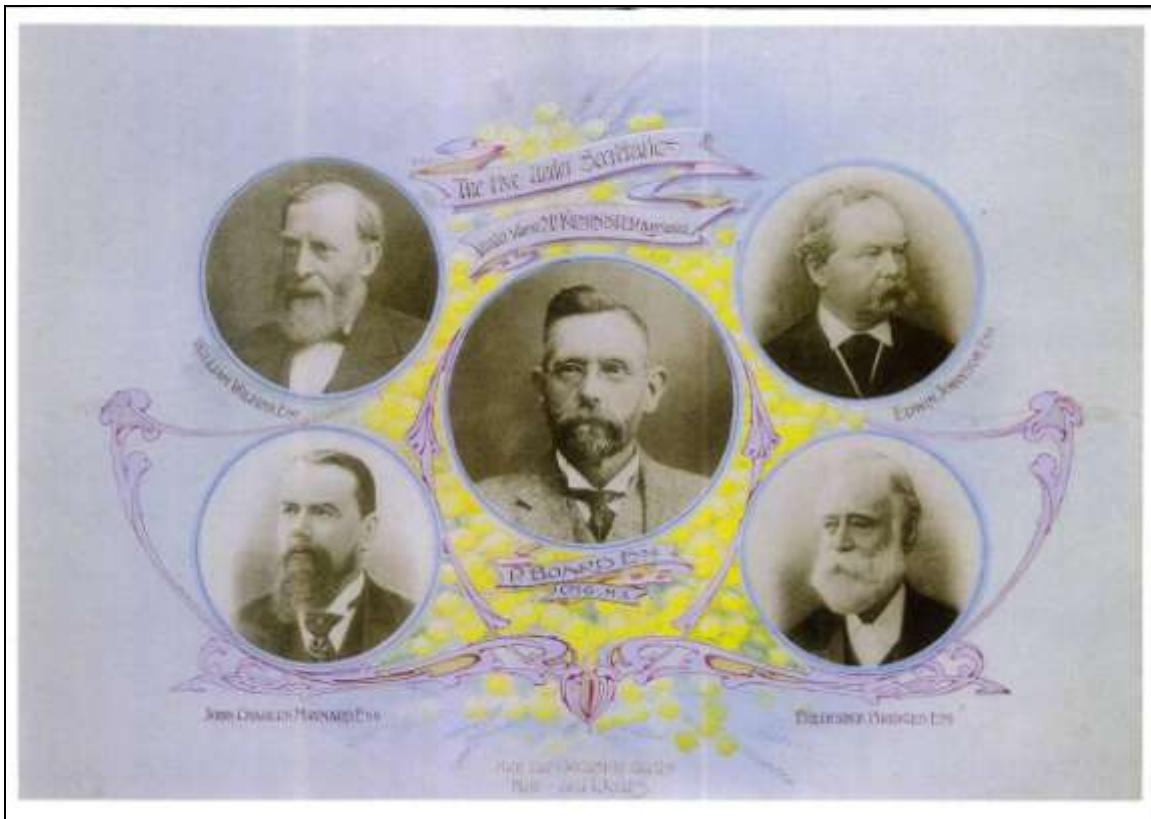


Item 13: Retirement Pictorial Presented to George Kilmister Esquire JP









Item 14: Collection of Sports Trophies and Commemorative Plaques



Item 15: Unnamed Collection (within Level 8 cabinet)



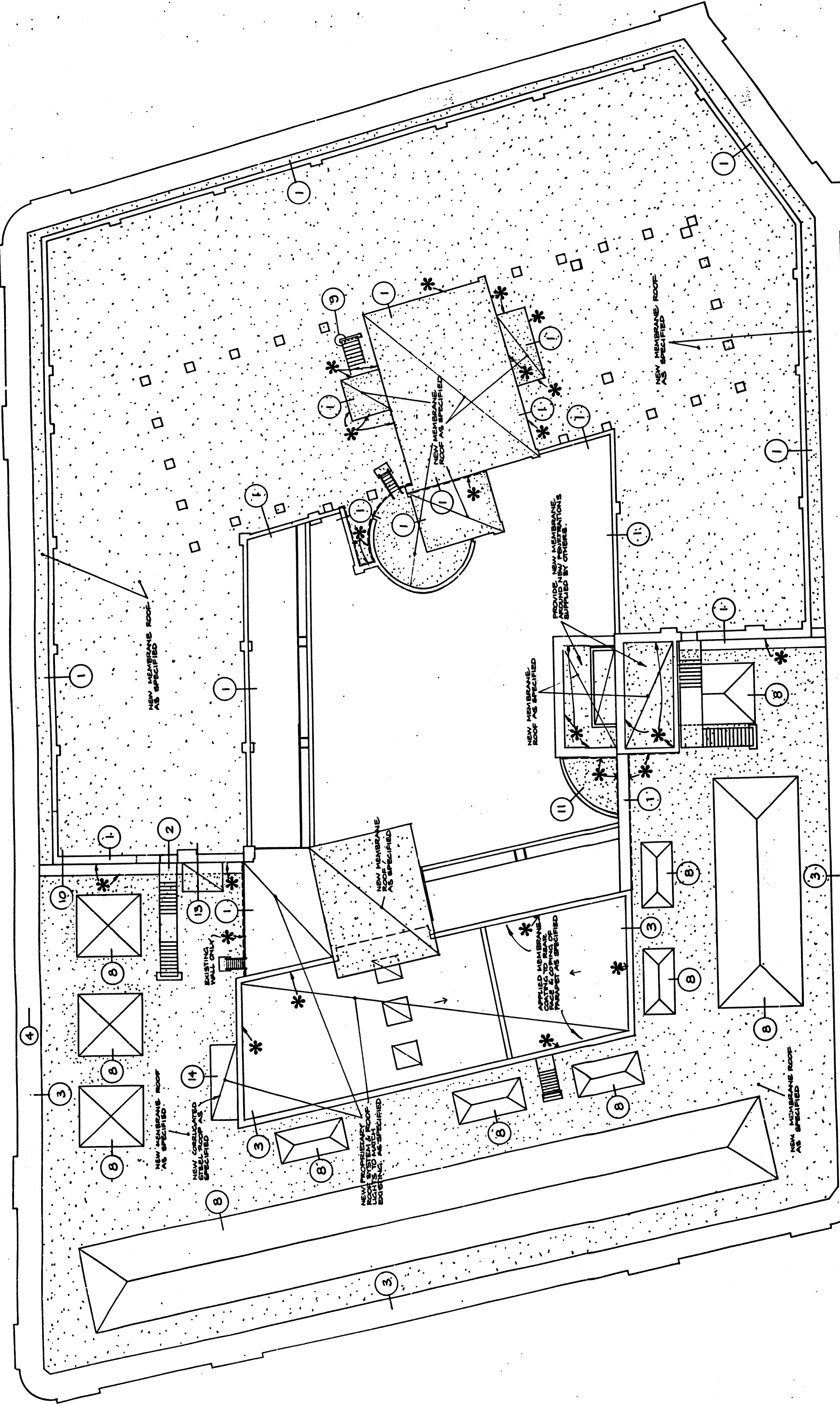
Item 16. The William Watkins Memorial Art Collection



Item 17: Corporate Market Art Collection



APPENDIX G – EARLY FLOOR PLANS OF THE BUILDING



LEGEND

* APPLIED MEMBRANE (SEE DETAIL 10)

••••• FIBRE BACKED EPDM MEMBRANE

NOTE

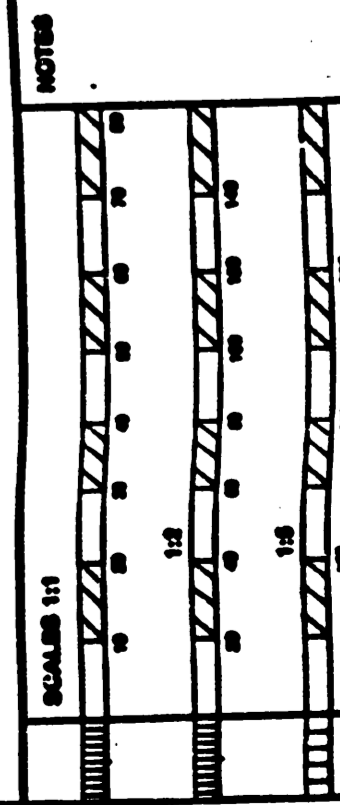
LOCATION AND EXTENT OF ALL PLINTHS AND PLANT NOT SHOWN ON THIS DRAWING CONTRACTOR TO CHECK WITH SERVICES DOCUMENTS FOR LOCATIONS PRIOR TO COMMENCEMENT ON SITE

THIS DRAWING TO BE READ IN CONJUNCTION WITH DETAIL DRAWINGS ED 95/3002 AND ED 95/3003

GENERAL NOTES

1. CONTRACTOR MUST VERIFY ALL DIMENSIONS ON SITE PRIOR TO THE COMMENCEMENT OF ANY WORK ON THE PREPARATION OF SHOP DRAWINGS.

2. MEMBRANE INSTALLATION TO BE USED IN PREPARATION TO MATCH EXISTING MEMBRANE.



PLAN ROOM NUMBER PB18/6.2

SHEET NUMBER ED 95/3001

SCALE N.T.S.

DRAWN D. COFFEY

EDUCATION BUILDING
BRIDGE STREET SYDNEY

COVERING/DETAIL
LOCATION PLAN

PUBLIC WORKS DEPARTMENT N.S.W.
S. S. CHRISTIE
DIRECTOR OF PUBLIC WORKS

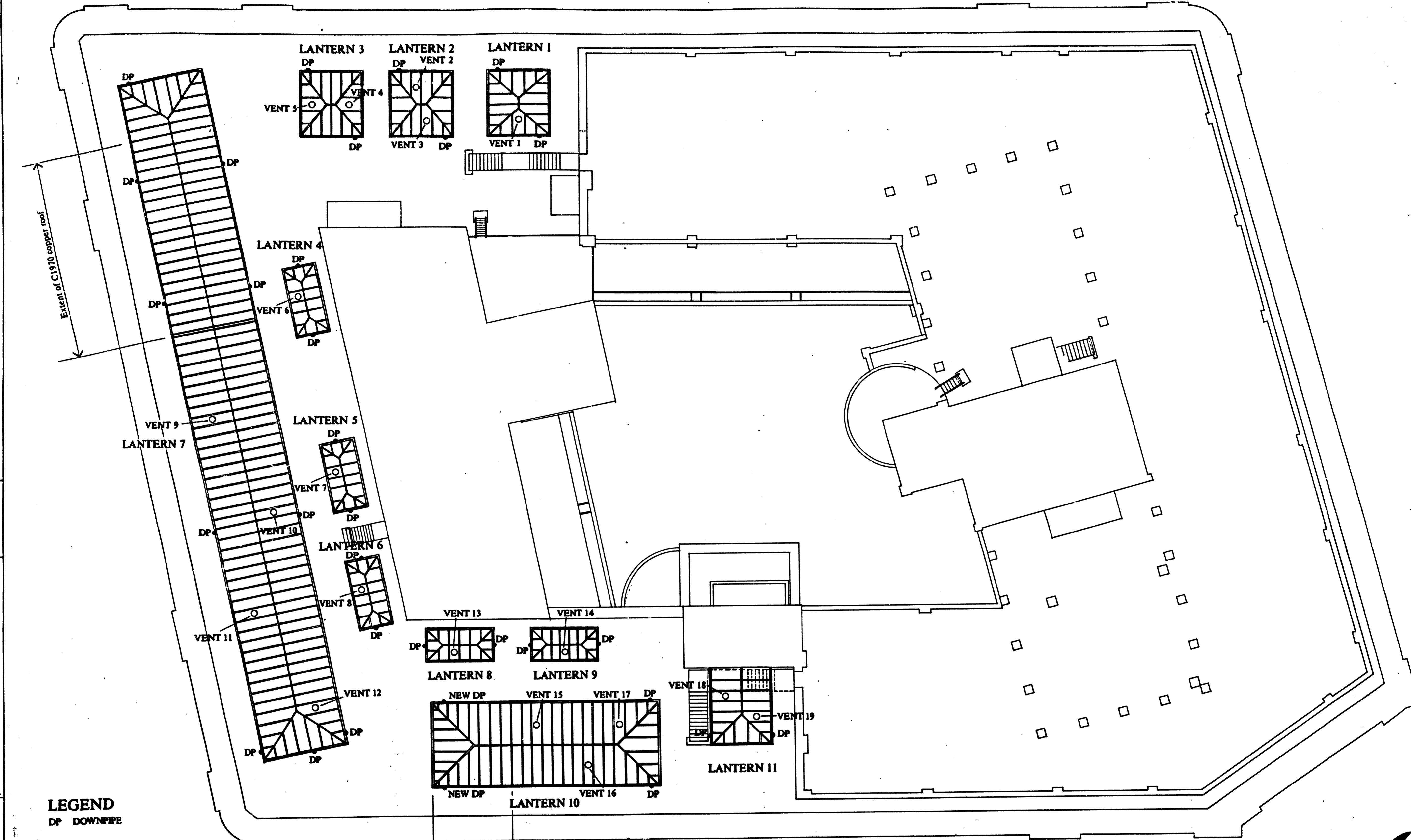
L. D. KELLY
GOVERNMENT ARCHITECT

Principal Architect
Architect
Architectural Division

GOSFORD MICROGRAPHICS Pty Ltd
Unit 1, 11 Stm - Macleay Street - NSW 2250 Australia
Tel: (043) 94 8044 Fax: (043) 94 8077

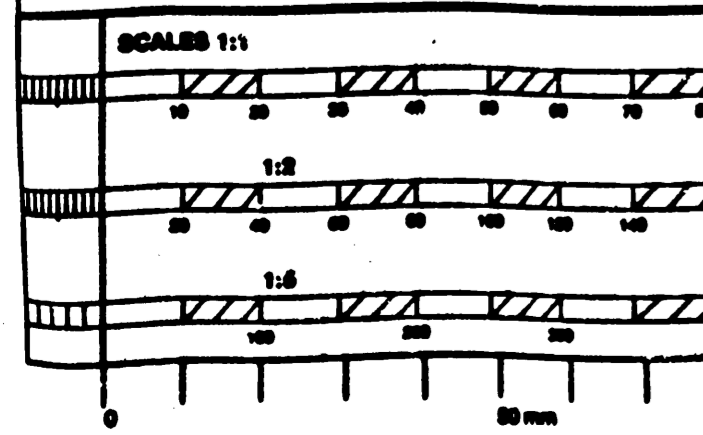
1 2 3 4 5 6 7 8 9 10 11 12 13 14 15

1 2 3 4 5 6 7 8 9 10 11 12 13 14 15



LEGEND
 DP DOWNPIPE

NOTE:
 EXISTING COPPER ROOFED LANTERNS 1 TO 10 TO BE REPAIRED (REFER TO SPECIFICATION FOR WORK SCHEDULE)
 LANTERN 11 TO HAVE A NEW COPPER ROOF TO REPLACE THE EXISTING.
 ALL EXISTING VENTS TO BE RETAINED AND REUSED (REFER TO SPECIFICATION WORK SCHEDULE)

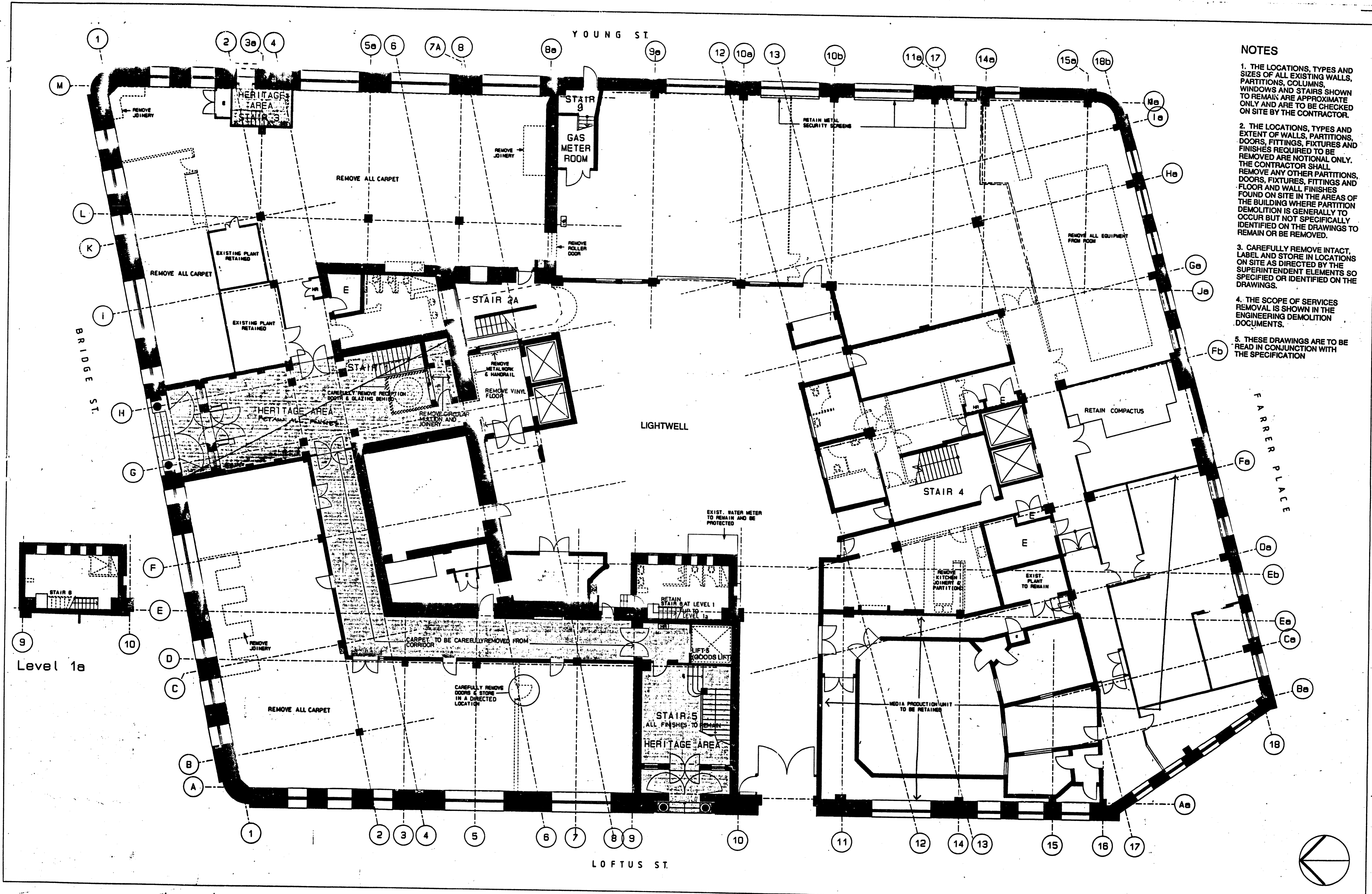


NOTES

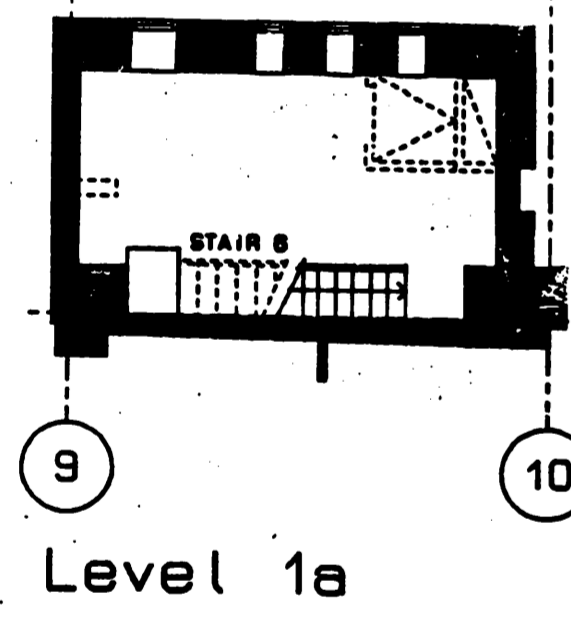
PUBLIC WORKS DEPARTMENT N.S.W.
 R. D. CHRISTIE DIRECTOR OF PUBLIC WORKS
 L. D. KELLY GOVERNMENT ARCHITECT
For Approval 16-6-65
 PRINCIPAL ARCHITECT
 ARCHITECTURAL DIVISION

EDUCATION BUILDING
BRIDGE STREET SYDNEY
COPPERWORK REPAIR
LOCATION PLAN

PLAN ROOM NUMBER PB18/65	SHEET NUMBER ED 95/3004
NUMBER IN SET	SCALE NTS
DRAWN D. Corby	



- NOTES**
1. THE LOCATIONS, TYPES AND SIZES OF ALL EXISTING WALLS, PARTITIONS, COLUMNS, WINDOWS AND STAIRS SHOWN TO REMAIN ARE APPROXIMATE ONLY AND ARE TO BE CHECKED ON SITE BY THE CONTRACTOR.
 2. THE LOCATIONS, TYPES AND EXTENT OF WALLS, PARTITIONS, DOORS, FITTINGS, FIXTURES AND FINISHES REQUIRED TO BE REMOVED ARE NOTIONAL ONLY. THE CONTRACTOR SHALL REMOVE ANY OTHER PARTITIONS, DOORS, FITTINGS, FIXTURES AND FLOOR AND WALL FINISHES FOUND ON SITE IN THE AREAS OF THE BUILDING WHERE PARTITION DEMOLITION IS GENERALLY TO OCCUR BUT NOT SPECIFICALLY IDENTIFIED ON THE DRAWINGS TO REMAIN OR BE REMOVED.
 3. CAREFULLY REMOVE INTACT, LABEL AND STORE IN LOCATIONS ON SITE AS DIRECTED BY THE SUPERINTENDENT ELEMENTS SO SPECIFIED OR IDENTIFIED ON THE DRAWINGS.
 4. THE SCOPE OF SERVICES REMOVAL IS SHOWN IN THE ENGINEERING DEMOLITION DOCUMENTS.
 5. THESE DRAWINGS ARE TO BE READ IN CONJUNCTION WITH THE SPECIFICATION



Issue Date No Amendment
 31/10/94 PRELIMINARY ISSUE
 REV A 01/1/94 GENERALLY UPDATED, TENDER ISSUE

KEY

- EXISTING ELEMENTS TO REMAIN
- EXISTING ELEMENTS TO BE REMOVED
- HERITAGE AREAS TO REMAIN EXCEPT WHERE SPECIFIC ITEMS ARE NOTED TO BE REMOVED

Checked *[Signature]* 31.10.94
 Drawn G.H. M.A.J. OCT 94
 Approved *[Signature]* 31.10.94
 Intellectual Property & Copyright of the Architects ©

Client: **PROPERTY SERVICES GROUP**
 ESTATE MANAGEMENT DIVISION
 Level 17
 100 William Street
 South Sydney NSW 2010
 Tel: (02) 357 1000
 Fax: (02) 357 3428

Project Manager: **AUSTRALIA PACIFIC PROJECTS CORPORATION PTY LTD**
 ACN 002 784 770
 Level 5
 90 Mount Street
 North Sydney NSW 2060
 Tel: (02) 357 8211
 Fax: (02) 354 1861

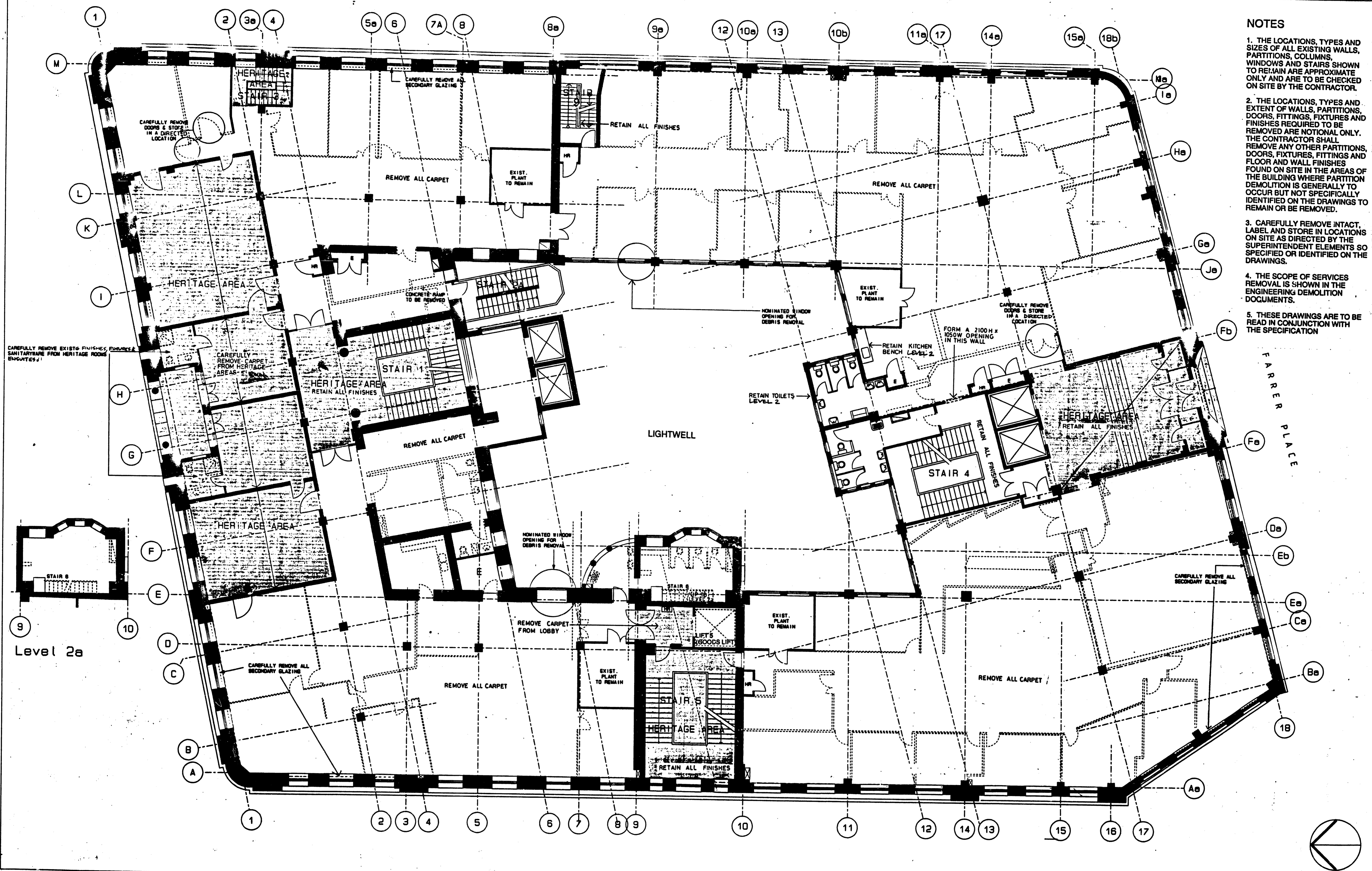
Primary Design Consultant: **ANCHER MORTLOCK WOOLLEY ARCHITECTS**
 Ancher Mortlock and Woolley Pty Ltd
 400 Deane Street
 Sydney Australia 2010
 Tel: 204 5288 Fax: 204 2089
 ACN 008 903 888

Project: **EDUCATION BUILDING**
 Bridge Street Sydney 2000
 Refurbishment and Fitout
 Contract Documents
 Scale 1:100

Project Number: **9407**
 Drawing Title: **Level 1 Demolition Floor Plan**
 Drawing Number: **CD101**
 Date of Plot 26/94

NOTES

1. THE LOCATIONS, TYPES AND SIZES OF ALL EXISTING WALLS, PARTITIONS, COLUMNS, WINDOWS AND STAIRS SHOWN TO REMAIN ARE APPROXIMATE ONLY AND ARE TO BE CHECKED ON SITE BY THE CONTRACTOR.
2. THE LOCATIONS, TYPES AND EXTENT OF WALLS, PARTITIONS, DOORS, FITTINGS, FIXTURES AND FINISHES REQUIRED TO BE REMOVED ARE NOTIONAL ONLY. THE CONTRACTOR SHALL REMOVE ANY OTHER PARTITIONS, DOORS, FIXTURES, FITTINGS AND FLOOR AND WALL FINISHES FOUND ON SITE IN THE AREAS OF THE BUILDING WHERE PARTITION DEMOLITION IS GENERALLY TO OCCUR BUT NOT SPECIFICALLY IDENTIFIED ON THE DRAWINGS TO REMAIN OR BE REMOVED.
3. CAREFULLY REMOVE INTACT, LABEL AND STORE IN LOCATIONS ON SITE AS DIRECTED BY THE SUPERINTENDENT ELEMENTS SO SPECIFIED OR IDENTIFIED ON THE DRAWINGS.
4. THE SCOPE OF SERVICES REMOVAL IS SHOWN IN THE ENGINEERING DEMOLITION DOCUMENTS.
5. THESE DRAWINGS ARE TO BE READ IN CONJUNCTION WITH THE SPECIFICATION



Issue, Date, No, Amendment
 31/10/94 MELING TENOR ISSUE 1
 REV A 9/11/94 GENERALLY UPDATED - TENOR ISSUE

KEY

	EXISTING ELEMENTS TO REMAIN
	EXISTING ELEMENTS TO BE REMOVED
	HERITAGE AREAS TO REMAIN EXCEPT WHERE SPECIFIC ITEMS ARE NOTED TO BE REMOVED

Checked *[Signature]* 13/10/94
 Drawn *[Signature]* 10/10/94
 Approved *[Signature]* 11/10/94
 Intellectual Property & Copyright of the Architect

Client
PROPERTY SERVICES GROUP
 ESTATE MANAGEMENT DIVISION

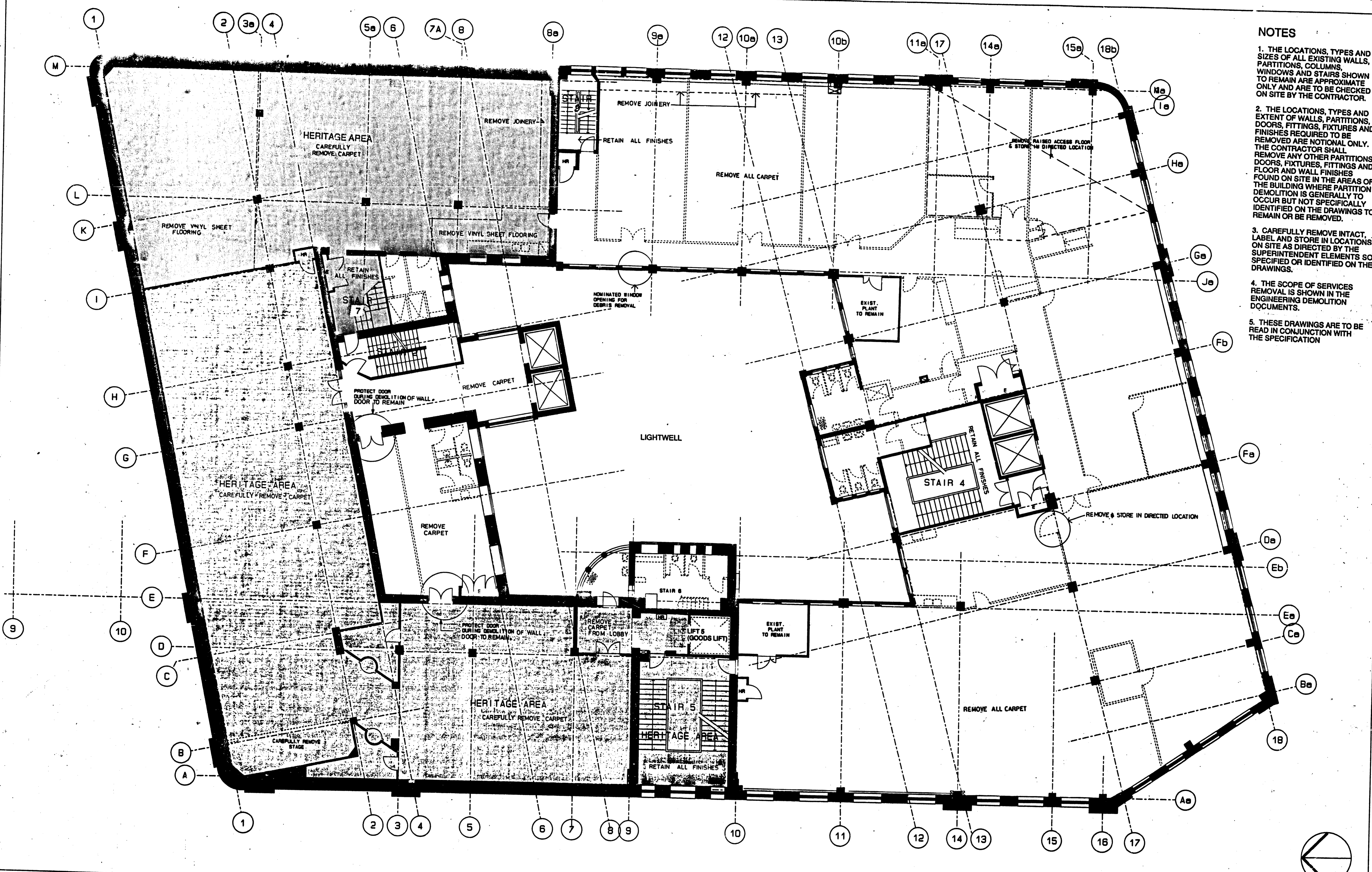
Project Manager
AUSTRALIA PACIFIC PROJECTS CORPORATION PTY LTD
 Level 17
 100 William Street
 East Sydney 2010
 Tel: (02) 334 1000
 Fax: (02) 357 3429

Primary Design Consultant
ANCHER MORTLOCK WOOLLEY ARCHITECTS
 Ancher Mortlock and Woolley Pty Ltd
 100 Bullbarn Street
 Sydney, Australia 2010
 Tel: (02) 357 0211
 Fax: (02) 354 1881

Project
EDUCATION BUILDING
 Bridge Street Sydney 2000
 Refurbishment and Fitout

Project Number
9407
 Drawing Title
Level 2 Demolition Floor Plan
 Drawing Number
CD102 A
 Date of Plot 7/9/94

CONTRACT DOCUMENTS
 Scale 1:100
 PB18/160



- NOTES**
1. THE LOCATIONS, TYPES AND SIZES OF ALL EXISTING WALLS, PARTITIONS, COLUMNS, WINDOWS AND STAIRS SHOWN TO REMAIN ARE APPROXIMATE ONLY AND ARE TO BE CHECKED ON SITE BY THE CONTRACTOR.
 2. THE LOCATIONS, TYPES AND EXTENT OF WALLS, PARTITIONS, DOORS, FITTINGS, FIXTURES AND FINISHES REQUIRED TO BE REMOVED ARE NOTIONAL ONLY. THE CONTRACTOR SHALL REMOVE ANY OTHER PARTITIONS, DOORS, FITTURES, FIXTURES AND FLOOR AND WALL FINISHES FOUND ON SITE IN THE AREAS OF THE BUILDING WHERE PARTITION DEMOLITION IS GENERALLY TO OCCUR BUT NOT SPECIFICALLY IDENTIFIED ON THE DRAWINGS TO REMAIN OR BE REMOVED.
 3. CAREFULLY REMOVE INTACT, LABEL AND STORE IN LOCATIONS ON SITE AS DIRECTED BY THE SUPERINTENDENT ELEMENTS SO SPECIFIED OR IDENTIFIED ON THE DRAWINGS.
 4. THE SCOPE OF SERVICES REMOVAL IS SHOWN IN THE ENGINEERING DEMOLITION DOCUMENTS.
 5. THESE DRAWINGS ARE TO BE READ IN CONJUNCTION WITH THE SPECIFICATION

Issue, Date, No, Amendment
 31/10/94 PER IP, TENDER ISSUE
 REV A, 31/1/94 GENERALLY UPDATED,
 TENDER ISSUE

KEY

- EXISTING ELEMENTS TO REMAIN
- - - EXISTING ELEMENTS TO BE REMOVED
- ▨ HERITAGE AREAS TO REMAIN EXCEPT WHERE SPECIFIC ITEMS ARE NOTED TO BE REMOVED

Checked *[Signature]* 1/31/94
 Drawn *[Signature]* M.A.J. 02/94
 Approved *[Signature]* 31/01/94
 Intellectual Property & Copyrights of the Architects ©

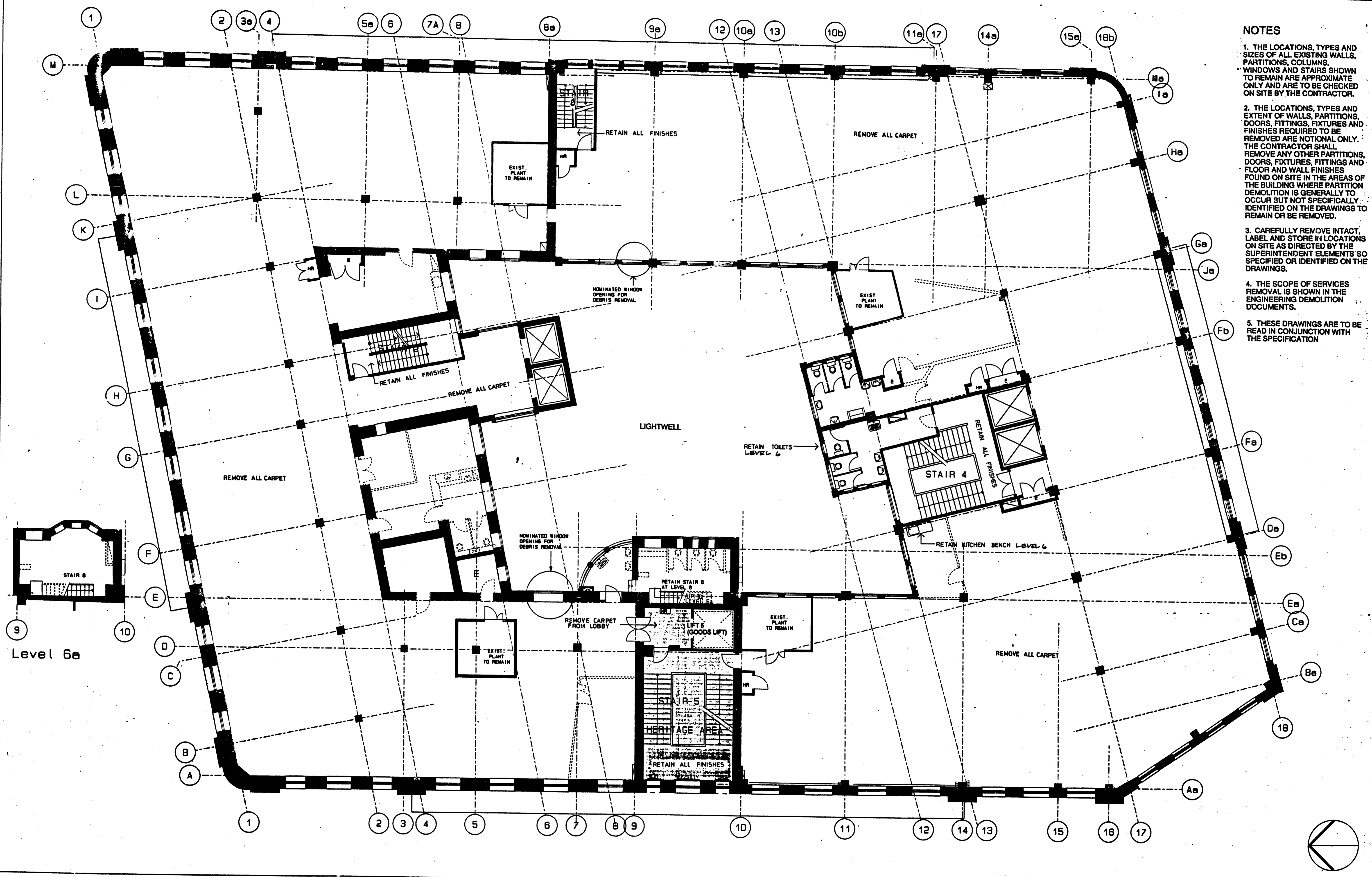
Client
PROPERTY SERVICES GROUP
 ESTATE MANAGEMENT DIVISION
 Level 17
 100 William Street
 East Sydney NSW 2000
 Tel: (02) 354 1000
 Fax: (02) 357 2428

Project Manager
AUSTRALIA PACIFIC PROJECTS CORPORATION PTY LTD
 ACH 002 784 770
 90 Mount Street
 North Sydney NSW 2060
 Tel: (02) 957 8211
 Fax: (02) 954 1951

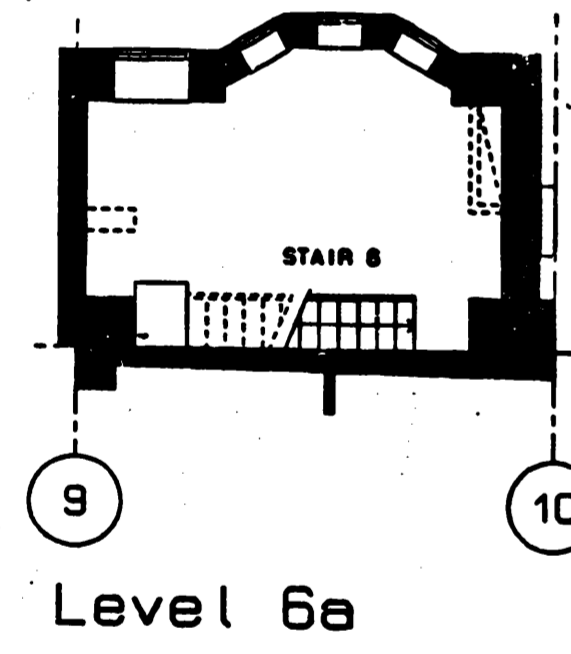
Primary Design Consultant
ANCHER MORTLOCK WOOLLEY ARCHITECTS
 Ancher Mortlock and Woolley Pty Ltd
 100 Southburn Street
 Sydney Australia 2010
 Tel: (02) 326 0000
 Fax: (02) 326 0000

Project
EDUCATION BUILDING
 Bridge Street Sydney 2000
 Refurbishment and Fitout
 CONTRACT DOCUMENTS
 Scale 1:100

Project Number
9407
 Drawing Title
Level 7 Demolition Floor Plan
 Drawing Number
CD107 A
 Date of Plot '13
 PB18/165



- NOTES**
1. THE LOCATIONS, TYPES AND SIZES OF ALL EXISTING WALLS, PARTITIONS, COLUMNS, WINDOWS AND STAIRS SHOWN TO REMAIN ARE APPROXIMATE ONLY AND ARE TO BE CHECKED ON SITE BY THE CONTRACTOR.
 2. THE LOCATIONS, TYPES AND EXTENT OF WALLS, PARTITIONS, DOORS, FITTINGS, FIXTURES AND FINISHES REQUIRED TO BE REMOVED ARE NOTIONAL ONLY. THE CONTRACTOR SHALL REMOVE ANY OTHER PARTITIONS, DOORS, FIXTURES, FITTINGS AND FLOOR AND WALL FINISHES FOUND ON SITE IN THE AREAS OF THE BUILDING WHERE PARTITION DEMOLITION IS GENERALLY TO OCCUR BUT NOT SPECIFICALLY IDENTIFIED ON THE DRAWINGS TO REMAIN OR BE REMOVED.
 3. CAREFULLY REMOVE INTACT, LABEL AND STORE IN LOCATIONS ON SITE AS DIRECTED BY THE SUPERINTENDENT ELEMENTS SO SPECIFIED OR IDENTIFIED ON THE DRAWINGS.
 4. THE SCOPE OF SERVICES REMOVAL IS SHOWN IN THE ENGINEERING DEMOLITION DOCUMENTS.
 5. THESE DRAWINGS ARE TO BE READ IN CONJUNCTION WITH THE SPECIFICATION



Issue, Date, No, Amendment
 21/10/94 P&L, 19001 1898
 REV A, 21/11/94 GENERALLY UPDATED - TENDER ISSUE

KEY

- EXISTING ELEMENTS TO REMAIN
- EXISTING ELEMENTS TO BE REMOVED
- HERITAGE AREAS TO REMAIN EXCEPT WHERE SPECIFIC ITEMS ARE NOTED TO BE REMOVED

Checked *ByDulac* 13/10/94
 Drawn *G.H.N.A. 21 OCT 94*
 Approved *F. W. W. 21 OCT 94*
 Intellectual Property & Copyright of the Architects ©

Client: **PROPERTY SERVICES GROUP**
 ESTATE MANAGEMENT DIVISION
 Level 17
 100 Pitt Street
 West Sydney 2010
 Tel: (02) 924 1000
 Fax: (02) 927 3438

Project Manager: **AUSTRALIA PACIFIC PROJECTS CORPORATION PTY LTD**
 Level 5
 50 Mount Street
 North Sydney NSW 2060
 Tel: (02) 957 8811
 Fax: (02) 954 1951

Primary Design Consultants: **ANCHER MORTLOCK WOOLLEY ARCHITECTS**
 Ancher Mortlock and Woolley Pty Ltd
 100 Baulburn Street
 Sydney Australia 2010
 Tel: 02 524 5268 Fax: 02 524 2888
 ANCHER MORTLOCK WOOLLEY ARCHITECTS

Project: **EDUCATION BUILDING**
 Bridge Street Sydney 2000
 Refurbishment and Fitout
 CONTRACT DOCUMENTS

Project Number: **9407**
 Drawing Title: **Level 6 Demolition Floor Plan**
 Drawing Number: **CD106 A**
 Issue

