

223155
HOUGHTON RD
YANCO NSW

ENGINEERING LAYOUT PLAN



**Premise
Riviera**
598 MACAULEY STREET, ALBURY
PHONE: (02) 6058-0100
64 HAMMOND AVE, WAGGA WAGGA
PHONE: (02) 6921-5312
3/15 FORD STREET, WANGARATTA
PHONE: (03) 5721-5688
WWW.PREMISE.COM.AU
ALBURY@PREMISE.COM.AU

AMENDMENTS/ACTIONS:-	DATE:
1. EXTENT OF EARTHWORKS PLAN	02/07/24
2. DRAINAGE CATCHMENT MODELLING	08/07/24
3. FOR INTERNAL REVIEW	10/07/24
4. CLIENT DISCUSSION	12/07/24
5. PRELIMINARY ISSUE	15/07/24
6. BOT LINE AMENDMENT	24/07/24
7. TURNING MOVEMENT EDITS	27/02/25
8. PRELIMINARY ISSUE V3	27/02/25

PLEASE NOTE :

IT IS THE RESPONSIBILITY OF THE CONTRACTOR TO LAISE WITH ALL SERVING AUTHORITIES TO DETERMINE THE LOCATION OF ANY SERVICES PRIOR TO ANY EXCAVATION ON THE SITE. THE POSITION OF SERVICES ARE APPROX ONLY. NO GUARANTEE OF ACCURACY. ALL EXISTING SERVICES ARE SHOWN.

THE CONTRACTOR IS TO ENSURE THAT ALL WORKS ARE EXECUTED IN A SAFE MANNER AND IN ACCORDANCE WITH THAT STATES "OCCUPATIONAL HEALTH AND SAFETY ACT", OTHER SAFETY REQUIREMENTS OF RELEVANT AUTHORITIES MUST BE FOLLOWED.

THE CONTRACTOR IS TO LAISE WITH THE RELEVANT AUTHORITIES REGARDING SEDIMENT CONTROL MEASURES. NO CONSTRUCTION WORK IS TO BEGIN ON SITE UNTIL SUCH MEASURES ARE IN PLACE. ANY DEVIATION FROM THE APPROVED SOIL & WATER MANAGEMENT PLAN MAY INCUR A FINE. ONLY THOSE TREES & SHRUBS THAT ARE MARKED FOR REMOVAL SHALL BE REMOVED.

ALL TRENCHES IN LOTS /NATURE STRIPS ARE TO BE RESTORED WITH A MINIMUM OF 100mm THICK TOPSOIL.

THE FACE OF KERBS ABOVE CONDUIT LOCATIONS ARE TO BE MARKED WITH A NEAT 'e', 'w', 'g' AND 't' AS APPROPRIATE.

THE CONTRACTOR IS TO NOTIFY,
-LOCAL WATER AUTHORITY 48HRS
-PRIOR TO COMMENCEMENT.
-MUNICIPAL AUTHORITY 1WEEK PRIOR TO COMMENCEMENT.
-SUBMITTEND 1WEEK PRIOR TO COMMENCEMENT.

THE PRINCIPAL CONTRACTOR IS RESPONSIBLE FOR CO-ORDINATION WITH SERVICE AUTHORITIES IN RELATION TO INSTALLATION OF THEIR SERVICES. THIS INCLUDES SETTING FINISHED LEVELS OF PITS AND STRUCTURES
ONLY SPECIFIC PLANS TO BE USED FOR CONSTRUCTION OF SPECIFIC SERVICES.



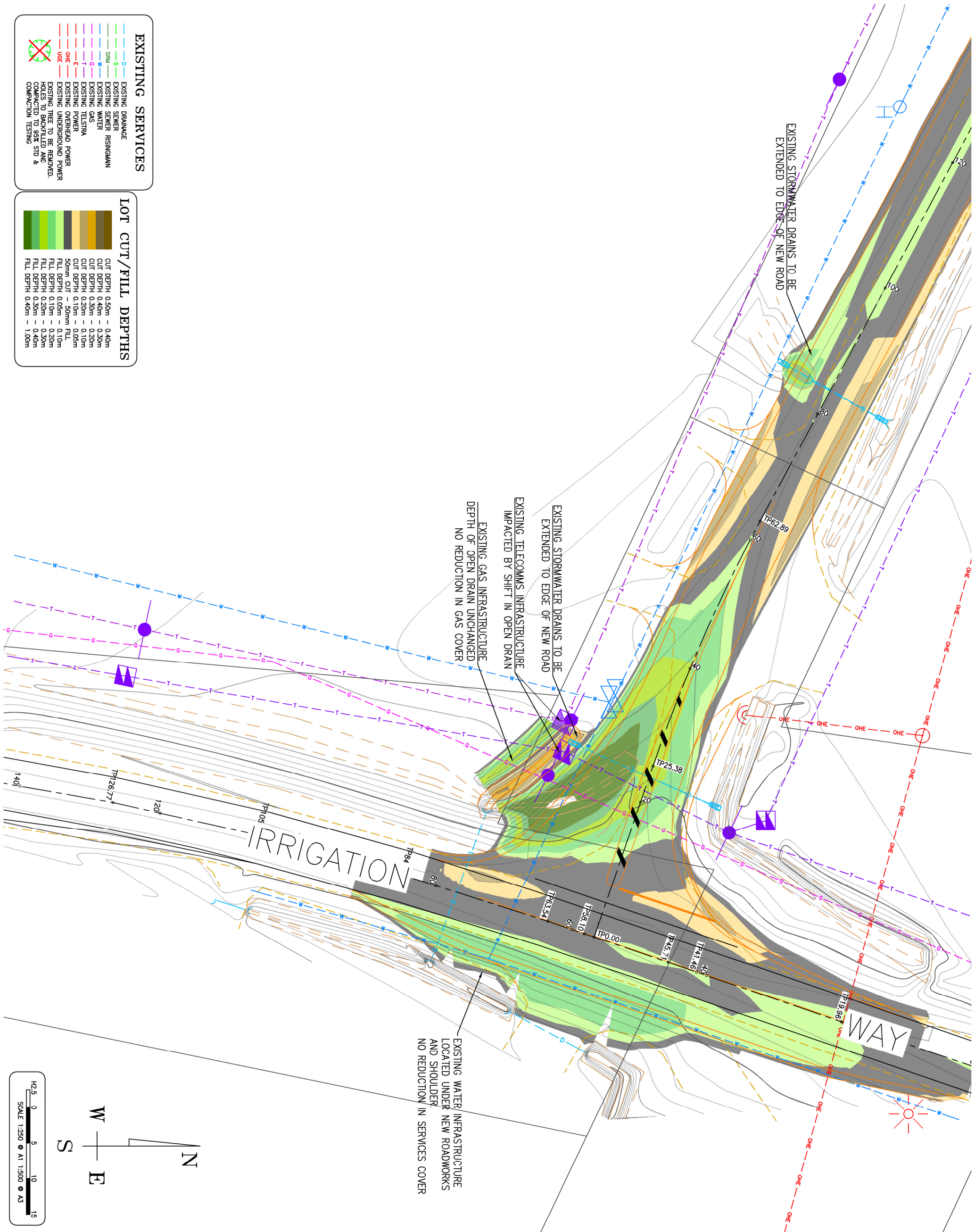
PRELIMINARY ISSUE V3
DATE:- 27/02/2025

PREMISE CHECKED:

AUTHORITY APPROVED:

DATUM:	DRAWN:	DATE:
AHD	MG	JULY-2024
PROJECT No:	REV:	E
P223155		

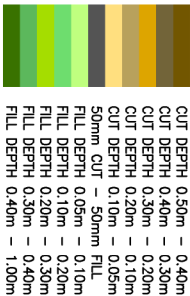
SHEET 01 OF 04 A1



EXISTING SERVICES

- D EXISTING DRAINAGE
- S EXISTING SEWER RISINGMAN
- W EXISTING WATER
- T EXISTING GAS
- E EXISTING TELSTRA
- OHE EXISTING OVERHEAD POWER
- UG EXISTING UNDERGROUND POWER
- EXISTING TREE TO BE REMOVED. HOLES TO BACKFILLED AND COMPACTION TESTING

LOT CUT/FILL DEPTHS



223155
HOUGHTON RD
YANCO NSW

EARTHWORKS CUT TO FULL
PRELIMINARY ESTIMATE



**Premise
Riverina**
598 MACAULEY STREET, ALBURY
PHONE: (02) 6058-0100
64 HAMMOND AVE, WAGGA WAGGA
PHONE: (02) 6921-5312
3/15 FORD STREET, WANGARATTA
PHONE: (03) 5721-5688
WWW.PREMISE.COM.AU
ALBURY@PREMISE.COM.AU

AMENDMENTS \ ACTIONS:-	DATE:
1. EXTENT OF EARTHWORKS PLAN	02/07/24
2. DRAINAGE CATCHMENT MODELING	08/07/24
3. FOR INTERNAL REVIEW	10/07/24
4. CLIENT DISCUSSION	12/07/24
5. PRELIMINARY ISSUE	15/07/24
6. BOT LINE AMENDMENT	24/07/24
7. TURNING MOVEMENT EDITS	27/02/25
8. PRELIMINARY ISSUE V3	27/02/25

PLEASE NOTE :

IT IS THE RESPONSIBILITY OF THE CONTRACTOR TO LAISE WITH ALL SERVING AUTHORITIES TO DETERMINE THE LOCATION OF ANY SERVICES PRIOR TO ANY EXCAVATION ON THE SITE. THE POSITIVE SERVICES ARE APPROX ONLY. NO GUARANTEED SERVICES. ALL EXISTING SERVICES ARE SHOWN.

THE CONTRACTOR IS TO ENSURE THAT ALL WORKS ARE EXECUTED IN A SAFE MANNER AND IN ACCORDANCE WITH THAT STATES "OCCUPATIONAL HEALTH AND SAFETY ACT", OTHER SAFETY REQUIREMENTS OF RELEVANT AUTHORITIES MUST BE FOLLOWED.

THE CONTRACTOR IS TO LAISE WITH THE RELEVANT AUTHORITIES REGARDING SEDIMENT CONTROL MEASURES. NO CONSTRUCTION WORK IS TO BEGIN ON SITE UNTIL SUCH MEASURES ARE IN PLACE. ANY DEVIATION FROM THE APPROVED SOIL & WATER MANAGEMENT PLAN MAY INCUR A FINE.

ONLY THOSE TREES & SHRUBS THAT ARE MARKED FOR REMOVAL SHALL BE REMOVED. ALL TRENCHES IN LOTS /NATURE STRIPS ARE TO BE RESTORED WITH A MINIMUM OF 100mm THICK TOPSOIL.

THE FACE OF KERBS ABOVE CONDUIT LOCATIONS ARE TO BE MARKED WITH A NEAT 'e', 'w', 'g' AND 't' AS APPROPRIATE.

THE CONTRACTOR IS TO NOTIFY,
-LOCAL WATER AUTHORITY 48HRS
-PRIOR TO COMMENCEMENT.
-MUNICIPAL AUTHORITY 1WEEK PRIOR TO COMMENCEMENT.
-SUBMITTEND 1WEEK PRIOR TO COMMENCEMENT.

THE PRINCIPAL CONTRACTOR IS RESPONSIBLE FOR CO-ORDINATION WITH SERVICE AUTHORITIES IN RELATION TO INSTALLATION OF THEIR SERVICES. THIS INCLUDES SETTING FINISHED LEVELS OF PITS AND STRUCTURES

ONLY SPECIFIC PLANS TO BE USED FOR CONSTRUCTION OF SPECIFIC SERVICES.



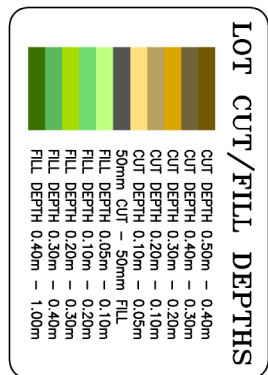
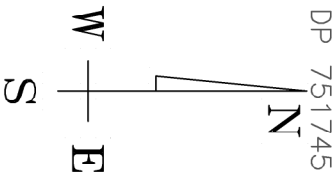
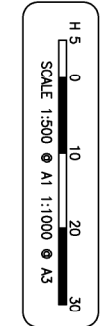
PRELIMINARY ISSUE V3
DATE:- 27/02/2025

PREMISE CHECKED:

AUTHORITY APPROVED:

DATUM:	DRAWN:	DATE:
AHD	MG	JULY-2024
PROJECT No:	REV:	E
P223155		

SHEET 02 OF 04 A1





Premise
Riverina

598 MACAULEY STREET, ALBURY
PHONE: (02) 6058-0100

64 HAMMOND AVE, WAGGA WAGGA
PHONE: (02) 6921-3312

3/15 FORD STREET, WANGARATTA
PHONE: (03) 5721-5688

WWW.PREMISE.COM.AU
ALBURY@PREMISE.COM.AU

AMENDMENTS \ ACTIONS:-	DATE:
1. EXTENT OF EARTHWORKS PLAN	02/07/24
2. DRAINAGE CATCHMENT MODELING	08/07/24
3. FOR INTERNAL REVIEW	10/07/24
4. CLIENT DISCUSSION	12/07/24
5. PRELIMINARY ISSUE	15/07/24
6. BOT LINE AMENDMENT	24/07/24
7. TURNING MOVEMENT EDITS	27/02/25
8. PRELIMINARY ISSUE V3	27/02/25

PLEASE NOTE :

IT IS THE RESPONSIBILITY OF THE CONTRACTOR TO LAISE WITH ALL SERVICING AUTHORITIES TO DETERMINE THE LOCATION OF ANY SERVICES PRIOR TO ANY EXCAVATION ON THE SITE. THE POSITIVE SERVICES ARE APPROX ONLY. NO GUARANTEES ARE GIVEN THAT ALL EXISTING SERVICES ARE SHOWN.

THE CONTRACTOR IS TO ENSURE THAT ALL WORKS ARE EXECUTED IN A SAFE MANNER AND IN ACCORDANCE WITH THAT STATES "OCCUPATIONAL HEALTH AND SAFETY ACT", OTHER SAFETY REQUIREMENTS OF RELEVANT AUTHORITIES MUST BE FOLLOWED.

THE CONTRACTOR IS TO LAISE WITH THE RELEVANT AUTHORITIES REGARDING SEDIMENT CONTROL MEASURES. NO CONSTRUCTION WORK IS TO BEGIN ON SITE UNTIL SUCH MEASURES ARE IN PLACE. ANY DEVIATION FROM THE APPROVED SOIL & WATER MANAGEMENT PLAN MAY INCUR A FINE.

ONLY THOSE TREES & SHRUBS THAT ARE MARKED FOR REMOVAL SHALL BE REMOVED.

ALL TRENCHES IN LOTS /NATURE STRIPS ARE TO BE RESTORED WITH A MINIMUM OF 100mm THICK TOPSOIL.

THE FACE OF KERBS ABOVE CONDUIT LOCATIONS ARE TO BE MARKED WITH A NEAT 'e', 'w', 'g' AND 't' AS APPROPRIATE.

THE CONTRACTOR IS TO NOTIFY,
-LOCAL WATER AUTHORITY 48HRS
-PRIOR TO COMMENCEMENT.
-MUNICIPAL AUTHORITY 1WEEK PRIOR TO COMMENCEMENT.
-SUBMITTEND 1WEEK PRIOR TO COMMENCEMENT:

THE PRINCIPAL CONTRACTOR IS RESPONSIBLE FOR CO-ORDINATION WITH SERVICE AUTHORITIES IN RELATION TO INSTALLATION OF THEIR SERVICES. THIS INCLUDES SETTING FINISHED LEVELS OF PITS AND STRUCTURES

ONLY SPECIFIC PLANS TO BE USED FOR CONSTRUCTION OF SPECIFIC SERVICES.

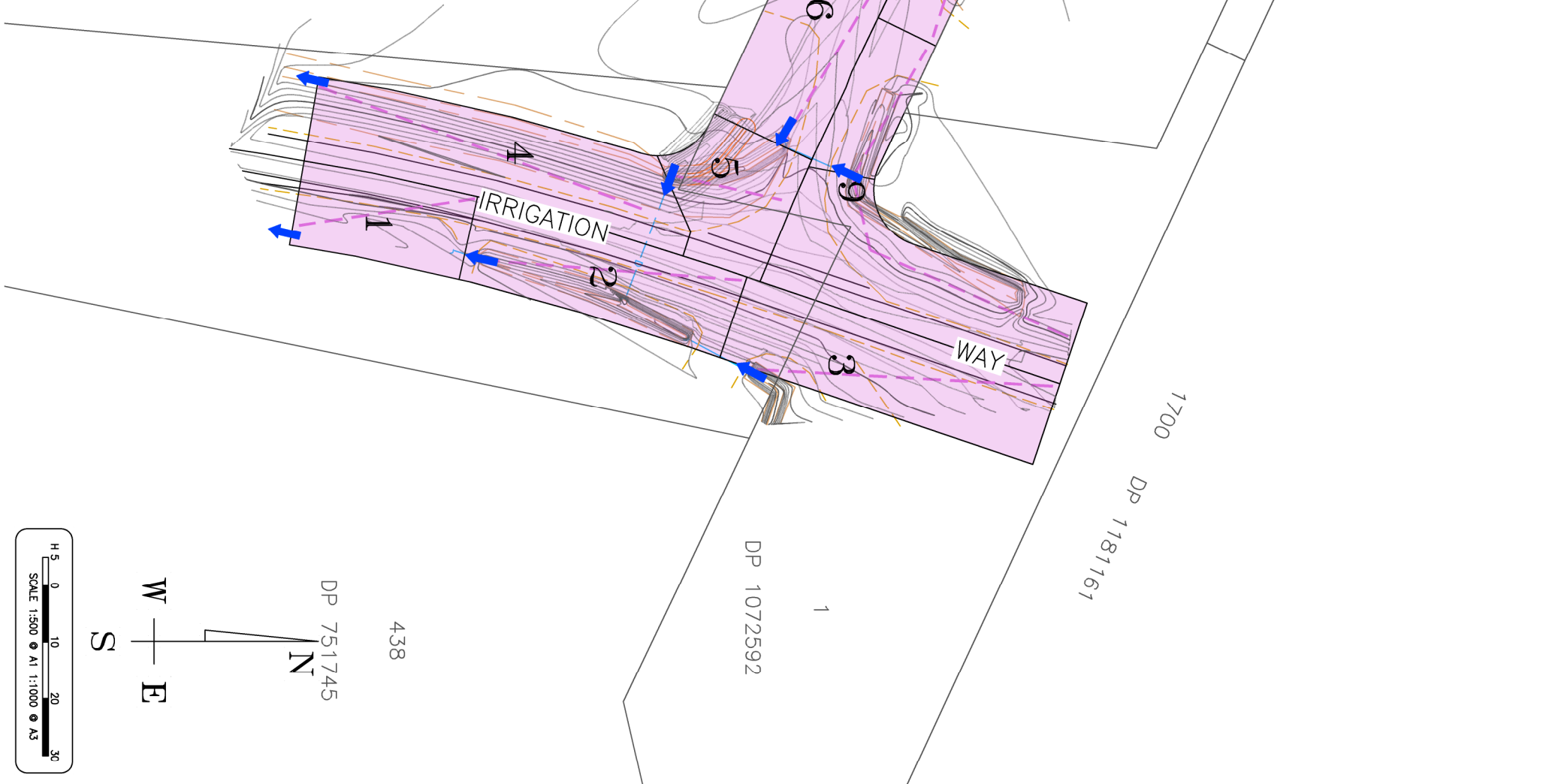


PRELIMINARY ISSUE V3
DATE:- 27/02/2025

PREMISE CHECKED:

AUTHORITY APPROVED:

DATUM:	DRAWN:	DATE:
A.H.D	MG	JULY-2024
PROJECT No:	REV:	E
P223155		



7005
DP 1027092

Catchment Stormwater Flows Comparison									
Existing Conditions	1	2	3	4	5	6	7	8	9
Impervious Area	(sq.m)	195.3	448.8	596.5	327.1	300.5	392.4	656.2	744.6
Previous Area	(sq.m)	267	282.2	276.2	672.1	128.3	322.8	1371.7	643.6
Total Area	(sq.m)	462.3	731	872.7	999.2	428.8	715.2	2027.9	1388.2
Fraction Impervious	(%)	0.422	0.614	0.684	0.327	0.701	0.549	0.324	0.536
Slope	(%)	1.19	2	2.11	0.98	3	1.02	0.4	0.36
Flow - New 10 year 10%	(l/s)	4.4	6.9	8.2	7.3	5.3	6.3	14	11.5
Flow - New 100 year 1%	(l/s)	8.1	12.8	15.2	13.8	9.2	11.8	23.2	19.1
New Design Conditions		1	2	3	4	5	6	7	8
Impervious Area	(sq.m)	195.3	448.8	501	312.6	172.5	399.1	427.8	555.6
Previous Area	(sq.m)	267	282.2	371.6	686.5	295.3	486.3	1726.4	696
Total Area	(sq.m)	462.3	731	872.6	999.1	467.8	886.4	2154.2	1251.6
Fraction Impervious		0.422	0.614	0.574	0.313	0.369	0.451	0.199	0.444
Slope	(%)	1.16	1.92	1.99	1.05	4.13	1.2	0.31	0.36
Flow - Existing 10 year 10%	(l/s)	4.4	6.8	8.1	7.6	6	8.1	14.9	10.1
Flow - Existing 100 year 1%	(l/s)	8.1	12.7	15	14.4	10	15	24.7	16.8
100yr Catchment Flow Increase	(l/s)	0	0.1	0.1	-0.3	-0.7	-1.8	-0.9	1.4
100yr Catchment Flow Increase	(l/s)	0	0.1	0.2	-0.6	-0.8	-3.2	-1.5	2.3



Premise
Riverina

598 MACAULEY STREET, ALBURY
PHONE: (02) 6058-0100

64 HAMMOND AVE, WAGGA WAGGA
PHONE: (02) 6921-3312

3/15 FORD STREET, WANGARATTA
PHONE: (03) 5721-5688

WWW.PREMISE.COM.AU
ALBURY@PREMISE.COM.AU

AMENDMENTS \ ACTIONS:-	DATE:
1. EXTENT OF EARTHWORKS PLAN	02/07/24
2. DRAINAGE CATCHMENT MODELING	08/07/24
3. FOR INTERNAL REVIEW	10/07/24
4. CLIENT DISCUSSION	12/07/24
5. PRELIMINARY ISSUE	15/07/24
6. BOT LINE AMENDMENT	24/07/24
7. TURNING MOVEMENT EDITS	27/02/25
8. PRELIMINARY ISSUE V3	27/02/25

PLEASE NOTE :

IT IS THE RESPONSIBILITY OF THE CONTRACTOR TO LAISE WITH ALL SERVING AUTHORITIES TO DETERMINE THE LOCATION OF ANY SERVICES PRIOR TO ANY EXCAVATION ON THE SITE. THE POSITIVE SERVICES ARE APPROX ONLY. NO GUARANTEED THAT ALL EXISTING SERVICES ARE SHOWN.

THE CONTRACTOR IS TO ENSURE THAT ALL WORKS ARE EXECUTED IN A SAFE MANNER AND IN ACCORDANCE WITH THAT STATES "OCCUPATIONAL HEALTH AND SAFETY ACT", OTHER SAFETY REQUIREMENTS OF RELEVANT AUTHORITIES MUST BE FOLLOWED.

THE CONTRACTOR IS TO LAISE WITH THE RELEVANT AUTHORITIES REGARDING SEDIMENT CONTROL MEASURES. NO CONSTRUCTION WORK IS TO BEGIN ON SITE UNTIL SUCH MEASURES ARE IN PLACE. ANY DEVIATION FROM THE APPROVED SOIL & WATER MANAGEMENT PLAN MAY INCUR A FINE.

ONLY THOSE TREES & SHRUBS THAT ARE MARKED FOR REMOVAL SHALL BE REMOVED.

ALL TRENCHES IN LOTS /NATURE STRIPS ARE TO BE RESTORED WITH A MINIMUM OF 100mm THICK TOPSOIL.

THE FACE OF KERBS ABOVE CONDUIT LOCATIONS ARE TO BE MARKED WITH A NEAT 'e', 'w', 'g' AND 't' AS APPROPRIATE.

THE CONTRACTOR IS TO NOTIFY,
-LOCAL WATER AUTHORITY 48HRS
-PRIOR TO COMMENCEMENT.
-MUNICIPAL AUTHORITY 1WEEK PRIOR TO COMMENCEMENT.
-SUBMITTEND 1WEEK PRIOR TO COMMENCEMENT.

THE PRINCIPAL CONTRACTOR IS RESPONSIBLE FOR CO-ORDINATION WITH SERVICE AUTHORITIES IN RELATION TO INSTALLATION OF THEIR SERVICES. THIS INCLUDES SETTING FINISHED LEVELS OF PITS AND STRUCTURES

ONLY SPECIFIC PLANS TO BE USED FOR CONSTRUCTION OF SPECIFIC SERVICES.

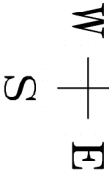
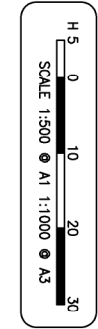
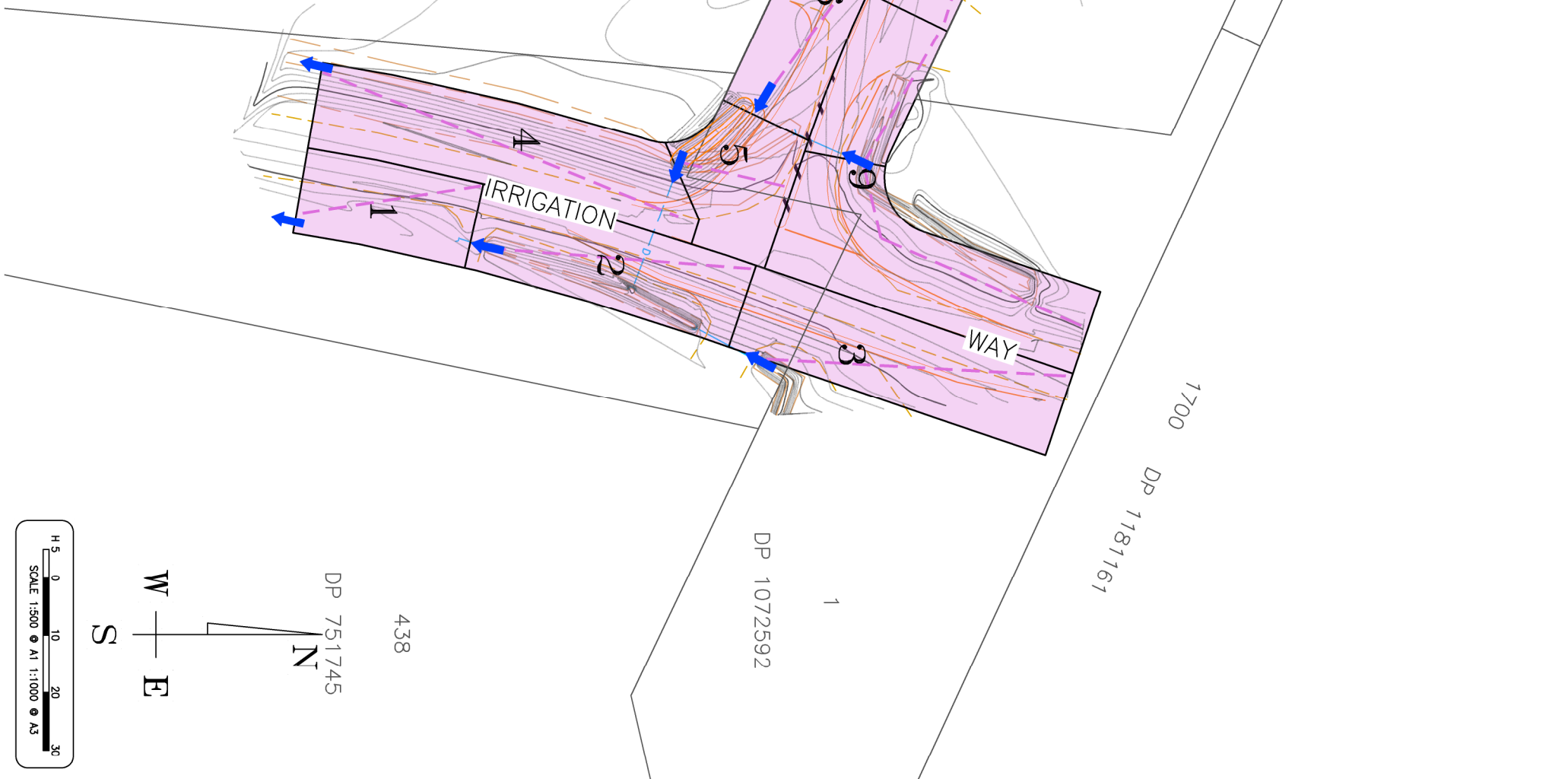


PRELIMINARY ISSUE V3
DATE:- 27/02/2025

PREMISE CHECKED:

AUTHORITY APPROVED:

DATUM:	DRAWN:	DATE:
A.H.D	MG	JULY-2024
PROJECT No:	REV:	E
P223155		



7005

DP 1027092

Catchment Stormwater Flows Comparison									
Existing Conditions	1	2	3	4	5	6	7	8	9
Impervious Area	(sq.m)	195.3	448.8	501	312.6	172.5	399.1	427.8	555.6
Pervious Area	(sq.m)	267	282.2	371.6	686.5	295.3	486.3	1726.4	696
Total Area	(sq.m)	462.3	731	872.6	999.1	467.8	885.4	2154.2	1251.6
Fraction Impervious		0.422	0.614	0.574	0.313	0.369	0.451	0.199	0.444
Slope	(%)	1.16	1.92	1.99	1.05	4.13	1.2	0.31	0.36
Flow - Existing 10 year 10%	(L/s)	4.4	6.8	8.1	7.6	6	8.1	14.9	10.1
Flow - Existing 100 year 1%	(L/s)	8.1	12.7	15	14.4	10	15	24.7	16.8
New Design Conditions		1	2	3	4	5	6	7	8
Impervious Area	(sq.m)	195.3	448.8	596.5	327.1	300.5	392.4	656.2	925.8
Pervious Area	(sq.m)	267	282.2	276.2	672.1	128.3	322.8	1371.7	746.2
Total Area	(sq.m)	462.3	731	872.7	999.2	428.8	715.2	2027.9	1672
Fraction Impervious		0.422	0.614	0.684	0.327	0.701	0.549	0.324	0.554
Slope	(%)	1.19	2	2.11	0.98	3	1.02	0.4	0.36
Flow - New 10 year 10%	(L/s)	4.4	6.9	8.2	7.3	5.3	6.3	14	11.5
Flow - New 100 year 1%	(L/s)	8.1	12.8	15.2	13.8	9.2	11.8	23.2	19.1
10yr Catchment Flow Increase	(L/s)	0	0.1	0.1	-0.3	-0.7	-1.8	-0.9	1.4
100yr Catchment Flow Increase	(L/s)	0	0.1	0.2	-0.6	-0.8	-3.2	-1.5	2.3