

Drawing Register

Drawing No.	Drawing Title	Scale	Issue No.
70 900	Title Sheet	N/A	A
70 901	Overall Site Plan	1:250 @ A1	A
70 902	Detail Plan - Courtyard 1	1:100 @ A1	A
70 903	Detail Plan - Courtyard 2	1:100 @ A1	A
70 904	Detail Plan - Courtyard 3	1:100 @ A1	A
70 905	Indicative Materials Palette	N/A	A
70 906	Indicative Plant Schedule	N/A	A

Location Plan | NTS

Client



Architect



Revisions

Issue	Date	Description
A	17.08.18	Mod 1 SSD6746

Drawn SW
 Check JH



190 James Street
 Redfern NSW 2016
 T (02) 9310 5644
 info@jmdesign.com.au

Project
 UTS Blackfriars Industry Hub
 Drawing title
 Title Sheet

Date
 August 2018
 Scale
 N/A

Drawing No.	Issue No.
70 900	A

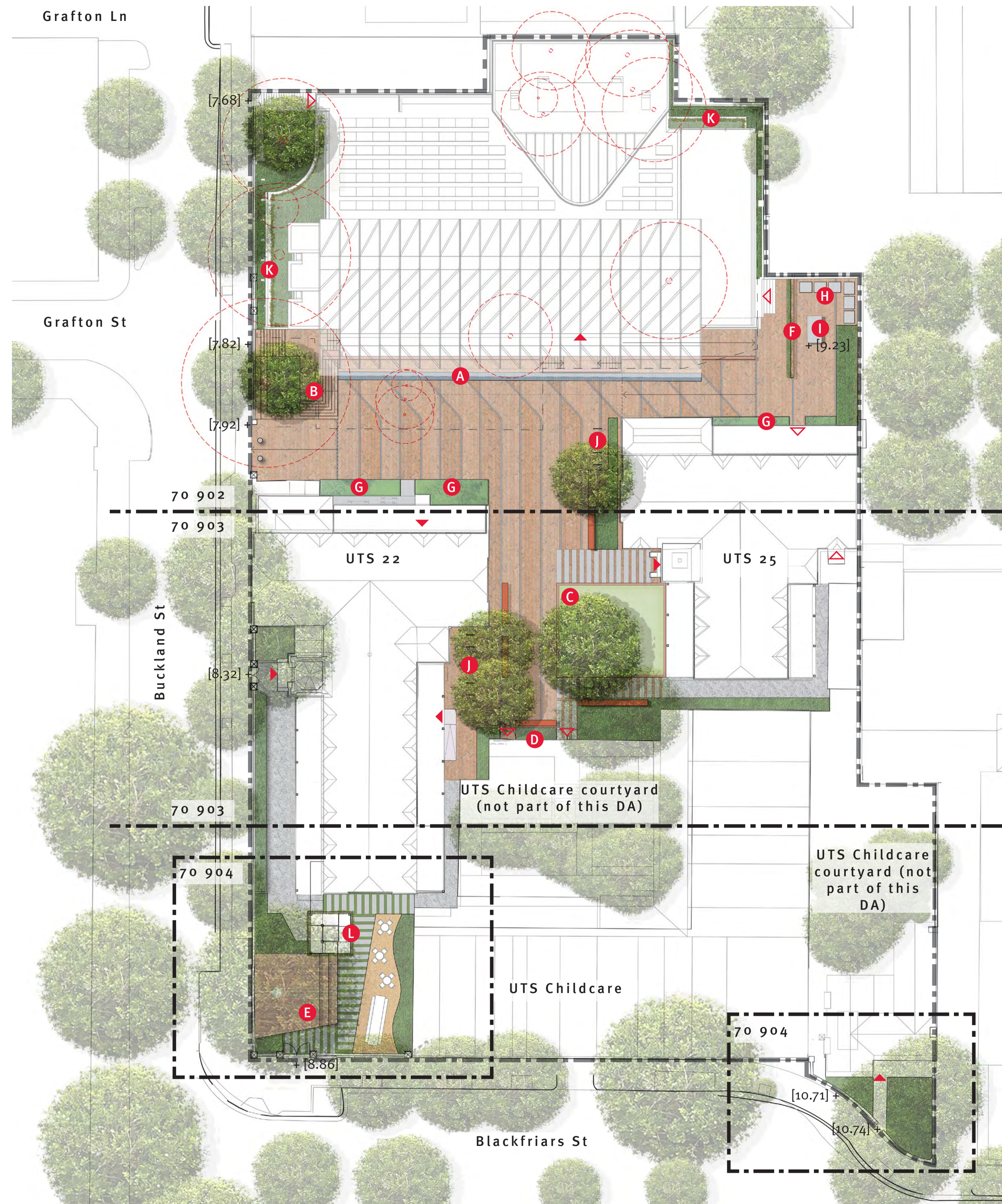
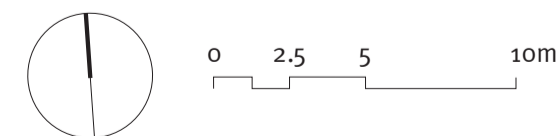
Overall Site Plan

Legend

- ■ ■ ■ Extent of works
- - - - Indicative extent of structure below
- Existing trees to be retained
- Existing trees to be removed
- Proposed trees *
- Raingarden or planted area
- Groundcover & shrub planting
- Extent of turfed area with brick edge
- Retractable bollards
- Brick paving with stone or concrete inserts
- Crushed sandstone
- Granite stone setts
- Stepping stone pavers
- Seating furniture - long bench
- Flexible foldable furniture
- Picnic table and bench setting
- A Water feature - grated drain
- B Seating stairs & raised platform under proposed tree
- C Inner Courtyard with central Lawn
- D Screen planting to childcare
- E Corner Courtyard with raised timber platform under existing mature tree
- F Screen planted wall
- G Raingarden or planted area
- H Proposed bin location
- I Existing substation location
- J Bike parking (20 bikes total)
note: secure bike storage TBC
- K Green wall (climbing plants to top and bottom of wall)
- L Climbing plants to lift structure & cable trellis support

* Indicative tree species:

Port Jackson Fig, Magnolia grandiflora, Queensland Lacebark, Lemon Scented Myrtle, Jacaranda, Liriodendron tulipifera, Chinese elm, Brush Box (Lophostemon) are being considered.



Note: 1. Trees on western side of Buckland St and Southern side of Blackfriars St are not surveyed, shown indicatively.
2. Canopy spread of existing trees within UTS Childcare shown at mature size (10 years time).

Client



Architect



Revisions

Issue	Date	Description
A	17.08.18	Mod 1 SSD6746

Drawn SW
Check JH

JMD design



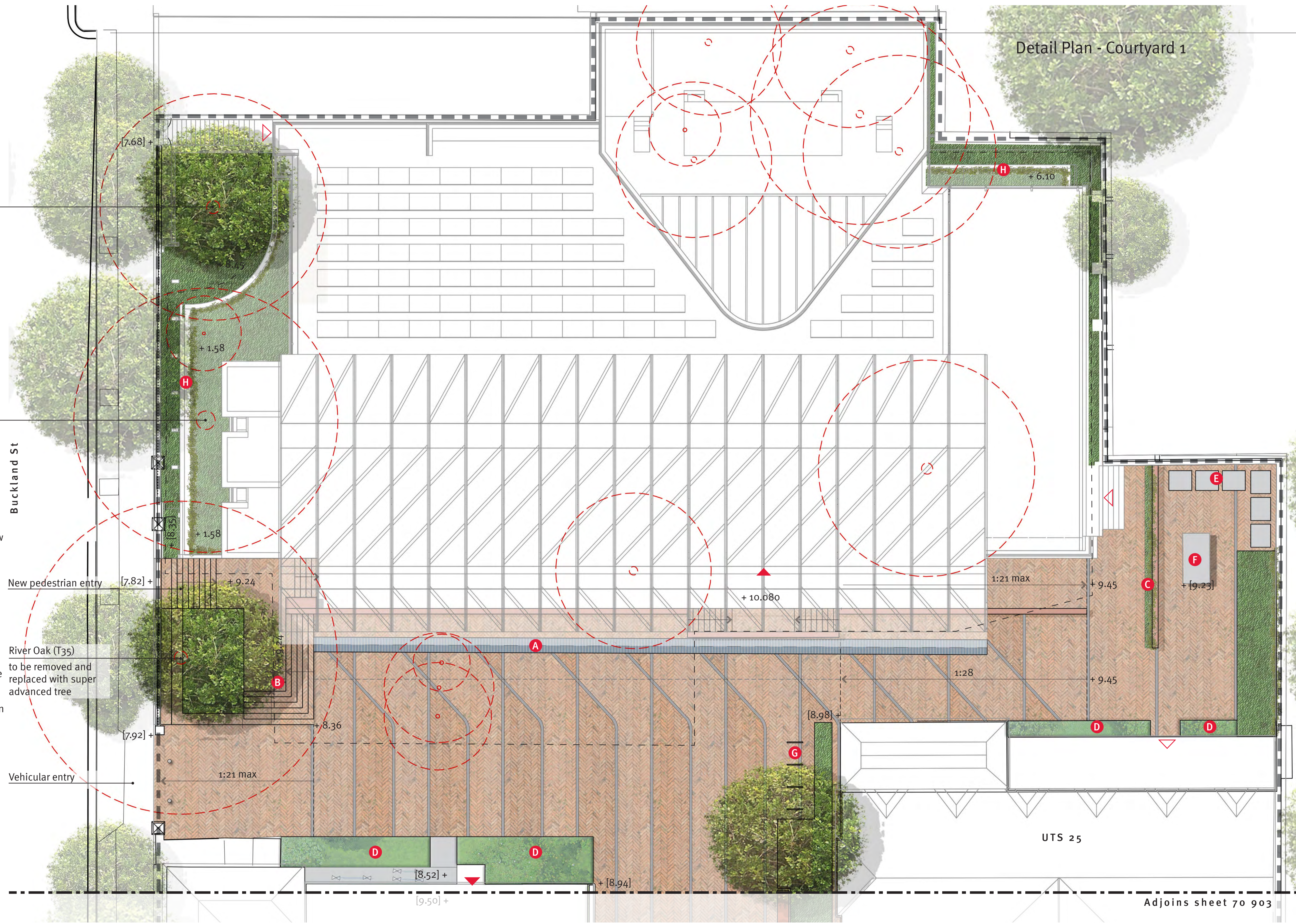
190 James Street
Redfern NSW 2016
T (02) 9310 5644
info@jmdesign.com.au

Project
UTS Blackfriars Industry Hub
Drawing title
Overall Site Plan

Date
August 2018
Scale
1:250 @ A1

Drawing No. 70 901
Issue No. A

Detail Plan - Courtyard 1

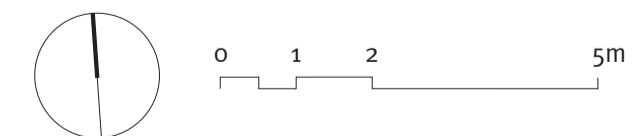


Jacaranda (T33)
to be removed and replaced with super advanced tree

Camphor Laurel (T34)
to be removed and replaced with mature tree on site

Legend

- ■ ■ Extent of works
- - - Indicative extent of structure below
- Existing trees to be retained
- Existing trees to be removed
- Proposed trees
- Raingarden or planted area
- Groundcover & shrub planting
- Retractable bollards
- Brick paving with stone or concrete inserts
- A** Water feature | Custom grated drain
- B** Brick seating stairs & raised platform under proposed tree
- C** Screen planted wall
- D** Raingarden or planted area
- E** Proposed bin location
- F** Existing substation
- G** Bike parking (20 bikes total, 8 shown on this drawing)
Note: Secured bike storage TBC
- H** Green wall (climbing plants to top and bottom of wall)



Buckland St

New pedestrian entry

River Oak (T35)
to be removed and replaced with super advanced tree

Vehicular entry

UTS 25

Adjoins sheet 70 903

Client
UTS
UNIVERSITY OF TECHNOLOGY, SYDNEY

Architect
tonkin
zulaikha
greer
ARCHITECTS

Revisions		Issue	Date	Description	Drawn	Check
A		17.08.18	Mod 1 SSD6746	SW	JH	

JMD design



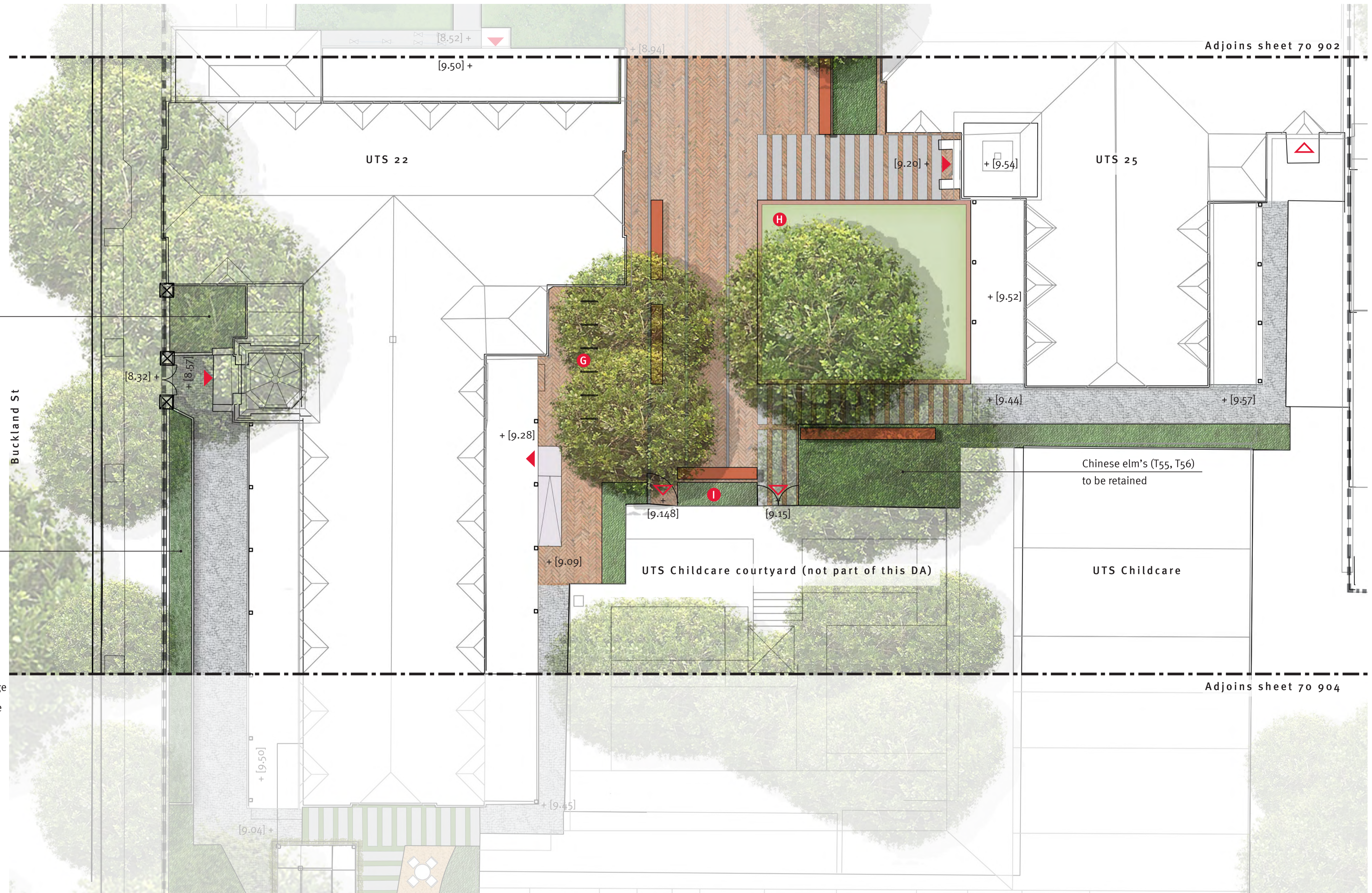
190 James Street
Redfern NSW 2016
T (02) 9310 5644
info@jmdesign.com.au

Project
UTS Blackfriars Industry Hub
Drawing title
Detail Plan - Courtyard 1

Date
August 2018
Scale
1:100 @ A1

Drawing No. Issue No.
70 902 A

Detail Plan - Courtyard 2

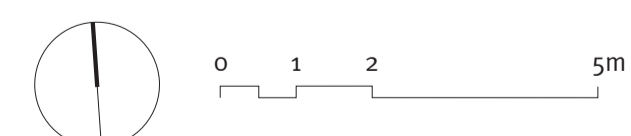


African Olive (T38)
to be retained

Existing hedge to be retained

Legend

- Extent of works
- Existing trees to be retained
- Proposed trees
- Groundcover & shrub planting
- Extent of turfed area with brick edge
- Brick paving with stone or concrete inserts
- Granite stone setts
- Stepping stone pavers
- Seating furniture - long bench
- G Bike parking (20 bikes total, 12 shown on this drawing)
Note: Secured bike storage TBC
- H Inner courtyard with central lawn
- I Screen planting to childcare



Client



Architect



Revisions

Issue	Date	Description
A	17.08.18	Mod 1 SSD6746

Drawn SW
Check JH

JMD design



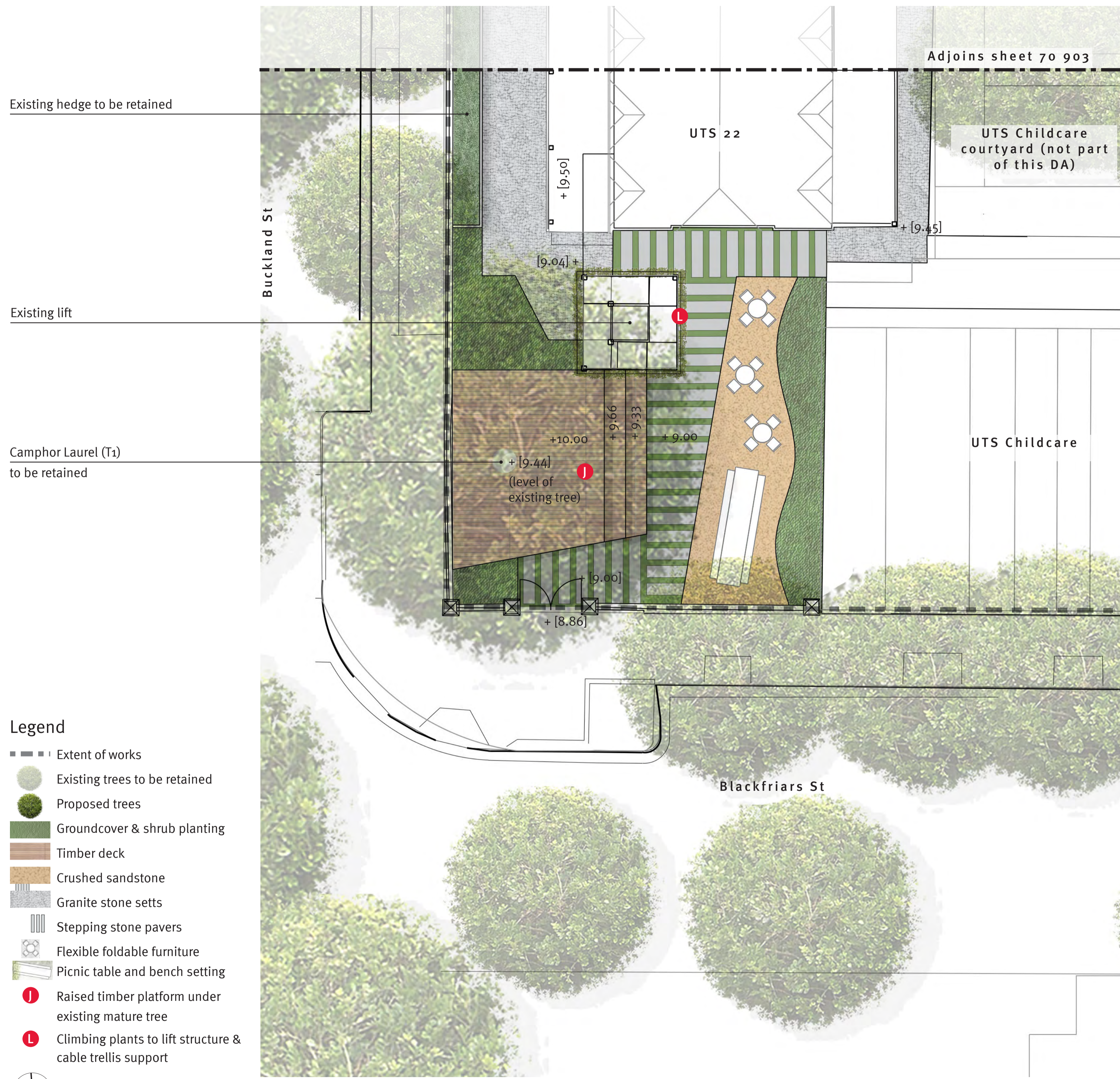
190 James Street
Redfern NSW 2016
T (02) 9310 5644
info@jmdesign.com.au

Project
UTS Blackfriars Industry Hub
Drawing title
Detail Plan - Courtyard 2

Date
August 2018
Scale
1:100 @ A1

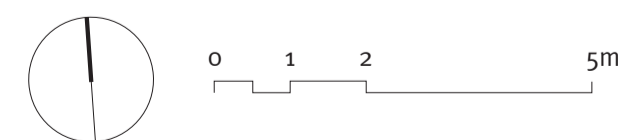
Drawing No. 70 903
Issue No. A

Detail Plan - Courtyard 3



Legend

- Extent of works
- Existing trees to be retained
- Proposed trees
- Groundcover & shrub planting
- Timber deck
- Crushed sandstone
- Granite stone setts
- Stepping stone pavers
- Flexible foldable furniture
- Picnic table and bench setting
- Ⓜ Raised timber platform under existing mature tree
- Ⓛ Climbing plants to lift structure & cable trellis support



Client



Architect



Revisions

Issue	Date	Description
A	17.08.18	Mod 1 SSD6746

Drawn SW
Check JH

JMD design



190 James Street
Redfern NSW 2016
T (02) 9310 5644
info@jmdesign.com.au

Project
UTS Blackfriars Industry Hub
Drawing title
Detail Plan - Courtyard 3

Date
August 2018
Scale
1:100 @ A1

Drawing No. 70 904
Issue No. A

Indicative Materials Palette



Public domain brick paving | herringbone pattern | stone or concrete inserts | granite stone setts



Custom grated drain

Stepping stones | stone or concrete

Lawn edge | bullnose brick



Screening wall | decorative brick screen

Trellis support structure & climbing plants



Raised timber deck around existing tree

Seating furniture | long bench | bistro chairs

Client



Architect



Revisions

Issue	Date	Description
A	17.08.18	Mod 1 SSD6746

Drawn	Check
SW	JH

JMD design



190 James Street
Redfern NSW 2016
T (02) 9310 5644
info@jmdesign.com.au

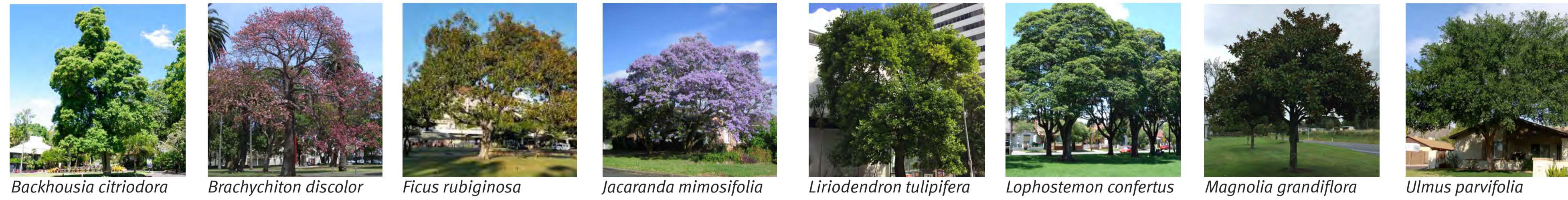
Project
UTS Blackfriars Industry Hub
Drawing title
Indicative Materials Palette

Date
August 2018
Scale
N/A

Drawing No.	Issue No.
70 905	A

Indicative Plant Schedule

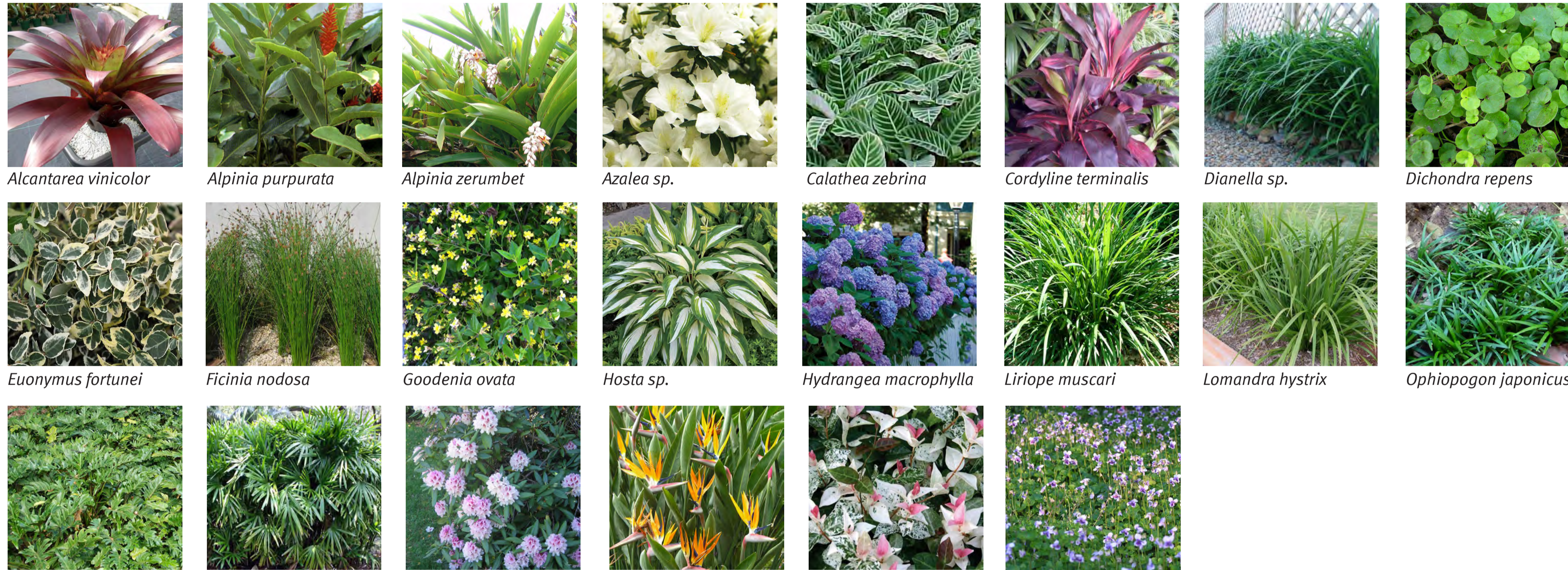
Trees



Backhousia citriodora *Brachychiton discolor* *Ficus rubiginosa* *Jacaranda mimosifolia* *Liriodendron tulipifera* *Lophostemon confertus* *Magnolia grandiflora* *Ulmus parvifolia*

Botanical name	Common name	Mature Height/Spread	Pot size
Trees:			
<i>Backhousia citriodora</i>	Lemon Scented Myrtle	5-20/2-5m	2000L
<i>Brachychiton discolor</i>	Lacebark Tree	15-20/10-12m	2000L
<i>Ficus rubiginosa</i>	Port Jackson Fig	12-15/10-12m	2000L
<i>Jacaranda mimosifolia</i>	Jacaranda	12-15/12-15m	2000L
<i>Liriodendron tulipifera</i>	Tulip Tree	12-14/14-16m	2000L
<i>Lophostemon confertus</i>	Queensland Brush Box	10-15/8-12m	2000L
<i>Magnolia grandiflora</i>	Southern Magnolia	15-20/10-12m	2000L
<i>Ulmus parvifolia</i>	Chinese Elm	15-20/6-10m	2000L

Shrubs & Groundcovers



Alcantarea vinicolor *Alpinia purpurata* *Alpinia zerumbet* *Azalea sp.* *Calathea zebrina* *Cordyline terminalis* *Dianella sp.* *Dichondra repens*
Euonymus fortunei *Ficinia nodosa* *Goodenia ovata* *Hosta sp.* *Hydrangea macrophylla* *Liriope muscari* *Lomandra hystrix* *Ophiopogon japonicus*

Flowering shrubs & Groundcovers:		
<i>Alcantarea vinicolor</i>	Tree Aloe	1/1m
<i>Alpinia purpurata</i>	Red Ginger	1-1.5m
<i>Alpinia zerumbet</i>	Shell Ginger	1-1.5m
<i>Azalea sp.</i>	Azalea	Varies/1m
<i>Calathea zebrina</i>	Zebra Plant	0.5-1/0.1-0.5m
<i>Cordyline terminalis</i>	Good Luck Plant	1-2/1m
<i>Dianella sp.</i>	Flax Lily	1-1.5/1-1.5m
<i>Dichondra repens</i>	Kidney Weed	150mm
<i>Euonymus fortunei</i>	Winter Creeper	Varies/1m
<i>Ficinia nodosa</i>	Knobby Club Rush	0.5-1.5/0.6-2m
<i>Goodenia ovata</i>	Hop Goodenia	1-2.5/1-3m
<i>Hosta sp.</i>	Hosta	1/1-2m
<i>Hydrangea macrophylla</i>	Bigleaf Hydrangea	1.5-2/1-1.5m
<i>Liriope muscari</i>	Lily Turf	0.5-1/0.1-0.5m
<i>Lomandra hystrix</i>	Rainforest Mat Rush	600mm
<i>Ophiopogon japonicus</i>	Mondo Grass	0.3/0.3m
<i>Philodendron xanadu</i>	Xanadu	0.6-0.9/0.9-1.2m
<i>Rhapis excelsa</i>	Broadleaf Lady Palm	2-4/2m
<i>Rhododendron sp.</i>	Rhododendron	Varies
<i>Strelitzia reginae</i>	Bird of Paradise	1-1.5/1-1.5m
<i>Trachelospermum tricolor</i>	Variegated star Jasmine	Up to 2/2.5m
<i>Viola hederacea</i>	Native Violet	

Climbers



Bougainvillea glabra *Clematis aristata* *Ficus pumila* *Hardenbergia violacea* *Hedera helix* *Hibbertia scandens* *Pandorea sp.* *Parthenocissus tricuspidata*

Climbers:		
<i>Bougainvillea glabra</i>	Paper Flower	
<i>Clematis aristata</i>	Old Mans Beard	
<i>Ficus pumila</i>	Creeping Fig	
<i>Hardenbergia violacea</i>	False Sarsaparilla	
<i>Hedera helix</i>	Common Ivy	
<i>Hibbertia scandens</i>	Golden Guinea Vine	
<i>Pandorea sp.</i>	Wonga Wonga Vine	
<i>Parthenocissus tricuspidata</i>	Boston Ivy	
<i>Philodendron erubescens</i>	Blushing Philodendron	
<i>Stephanotis floribunda</i>	Madagascar Jasmine	
<i>Sollya heterophylla</i>	Bluebell Creeper	

Client



Architect



Revisions

Issue	Date	Description
A	17.08.18	Mod 1 SSD6746

Drawn: SW Check: JH

JMD design



190 James Street
Redfern NSW 2016
T (02) 9310 5644
info@jmdesign.com.au

Project
UTS Blackfriars Industry Hub
Drawing title
Indicative Plant Schedule

Date
August 2018
Scale
N/A

Drawing No. | Issue No.
70 906 | A