



NSW GOVERNMENT  
Planning

Issued under the Environmental Planning and Assessment Act 1979

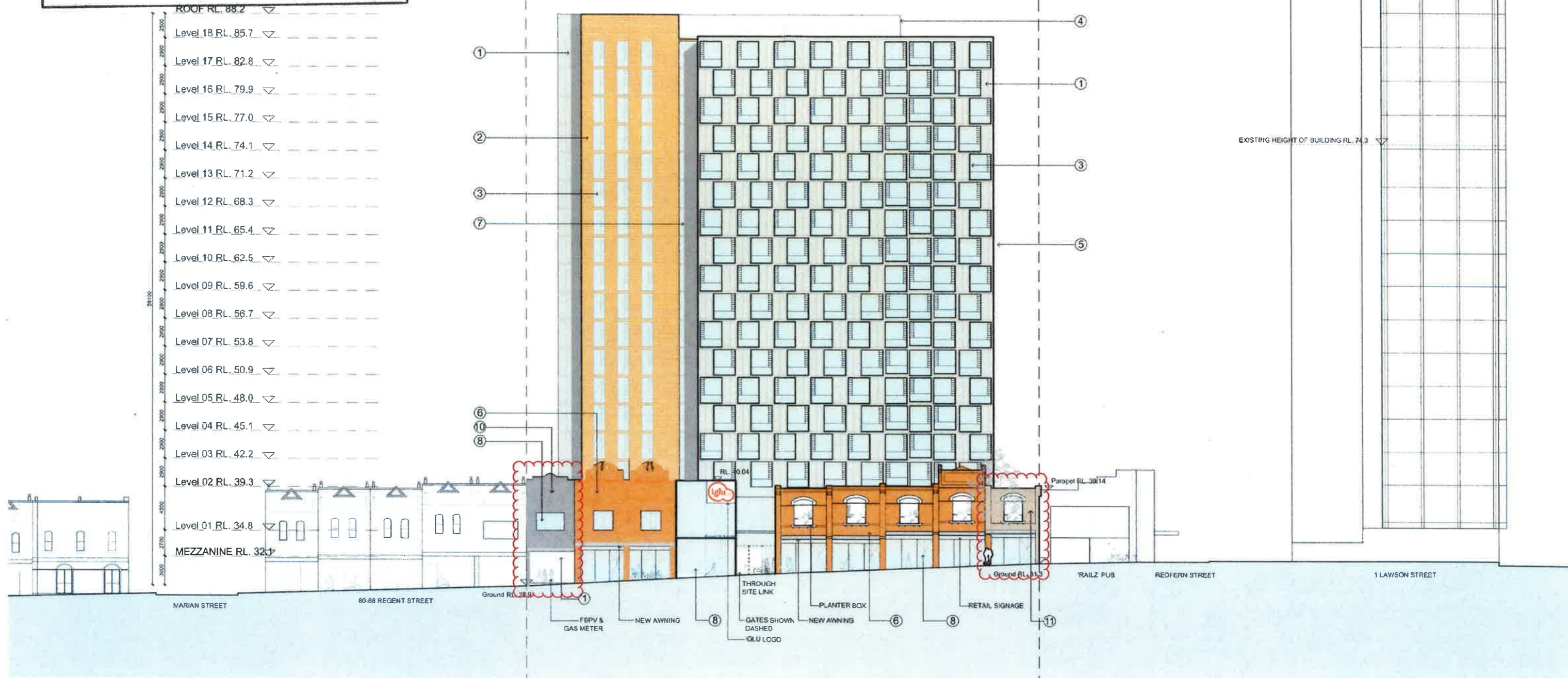
Approved Section 96 (1A) (1) (2) Modification Application

No. 2 granted on the 27 September 2017

in respect to MP SSD 6724

Signed [Signature]

Sheet No. 1 of 1



**PRELIMINARY**  
NOT FOR CONSTRUCTION

MATERIALS LEGEND

- 1 Aluminium cladding panel
- 2 Terracotta cladding panel
- 3 Window systems (Vision glass, glass louvres & spandrel)
- 4 Aluminium screen
- 5 Expressed aluminium sunshade
- 6 Existing face brickwork
- 7 Glass louvres

- 8 Vision glass
- 9 New brickwork
- 10 New paint to existing rendered facade - colour grey
- 11 New paint to existing painted facade - colour beige similar to adjacent building

Revision	Date	Description	Issue	Checked
E	13.07.17	Issue for s96	SK	SK
D	28.08.15	For information	DL	BD
C	20.03.15	Preferred Project Report Issue	EO	BD
B	26.02.15	Revised DA Issue	JH	BD
A	26.11.14	Issue for DA	JH	BD

60-78 Regent St  
Redfern  
East Elevation



Scale	1:400 @ A3
Drawn	JH
Checked	BD
Project No	S11798
Status	DA
Plot Date	28/06/2015 6:15:10 PM
Plot File	S:\11798\11798_001.dwg
Drawing No	A07.001[E]

Melbourne 1 Nicholson Street  
Melbourne VIC 3000 Australia  
T 03 8684 6200 F 03 8684 6300  
email mel@bates-smart.com.au  
http://www.bates-smart.com.au

Sydney 43 Bisham Street  
Sydney NSW 2010 Australia  
T 02 8194 5100 F 02 8354 5199  
email syd@bates-smart.com.au  
http://www.bates-smart.com.au

Bates Smart Pty Ltd ABN 79 004 999 406

**BATES**