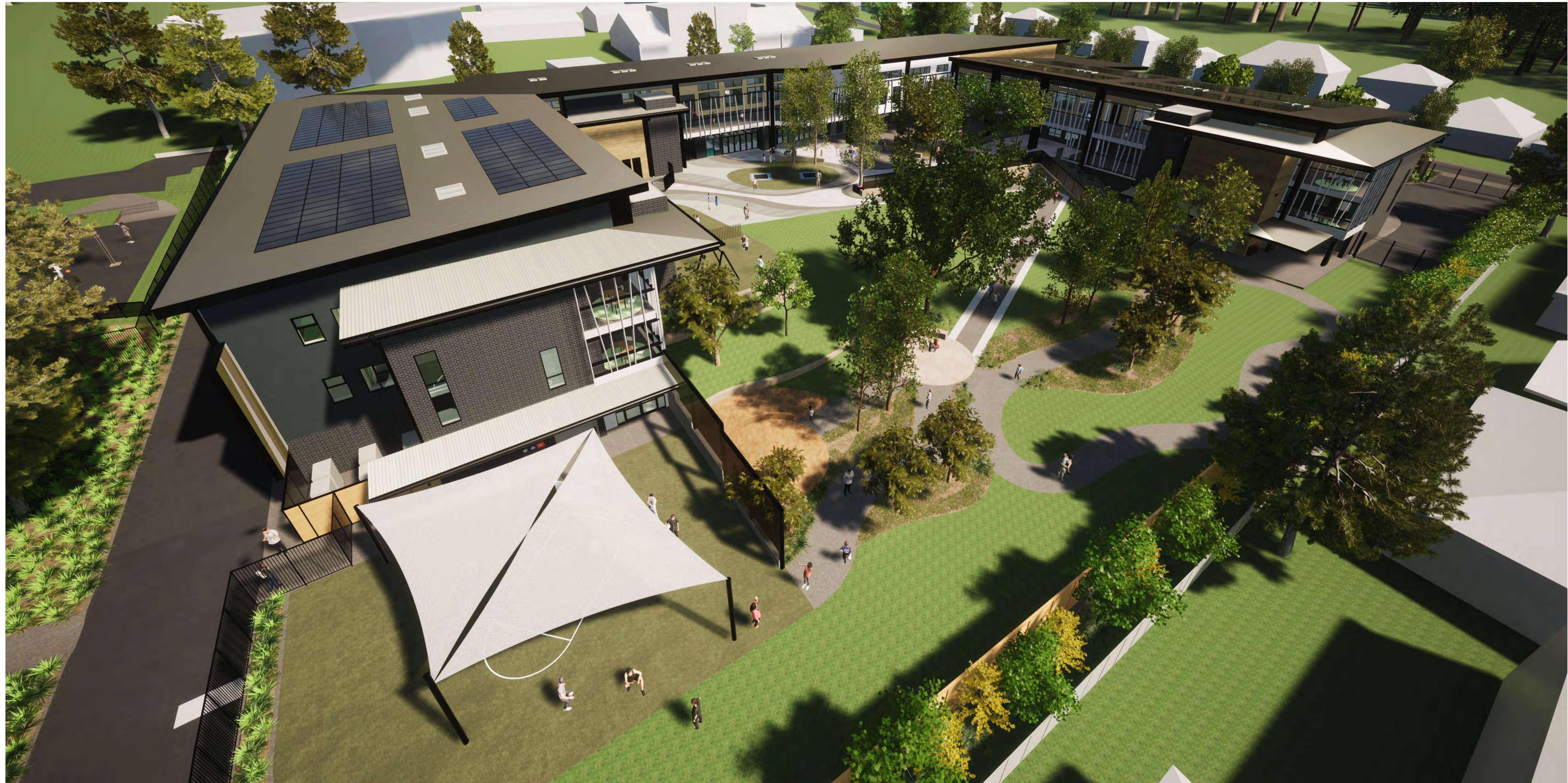


Stanton Dahl Architects  
 PO Box 833, Epping, NSW 1710, Australia  
 Tel +61 2 8876 5300  
 www.stantondahl.com.au

All dimensions to be verified on site and any discrepancies referred to architect for determination, figured dimensions to take precedence over scaled dimensions.  
 This design including its associated drawings, images, etc. is the intellectual property of stanton dahl & associates pty limited and must not be referenced copied or used without written permission of stanton dahl & associates pty limited.

Rev	Issue	Date
A	Issue for SSDA	07/04/25
B	Issue for SSDA - Revised	01/07/25

Amendments



**01 North-East Perspective - Aerial**  
 not to scale

**Note:**  
 All landscaping shown is indicative only and does not represent final planting selections. Please refer to the landscape drawings for planting schedules and quantities

**Stanton Dahl Architects**  
 Architecture in the  
 Heart of the Community

**Eileen O'Connor Catholic School**

**CATHOLIC SCHOOLS Broken Bay**

**RP INFRASTRUCTURE**

**Eileen O'Connor Catholic School**

Catholic Schools Broken Bay (CSBB)  
 84 Gavenlock Road,  
 Mardi, NSW 2259

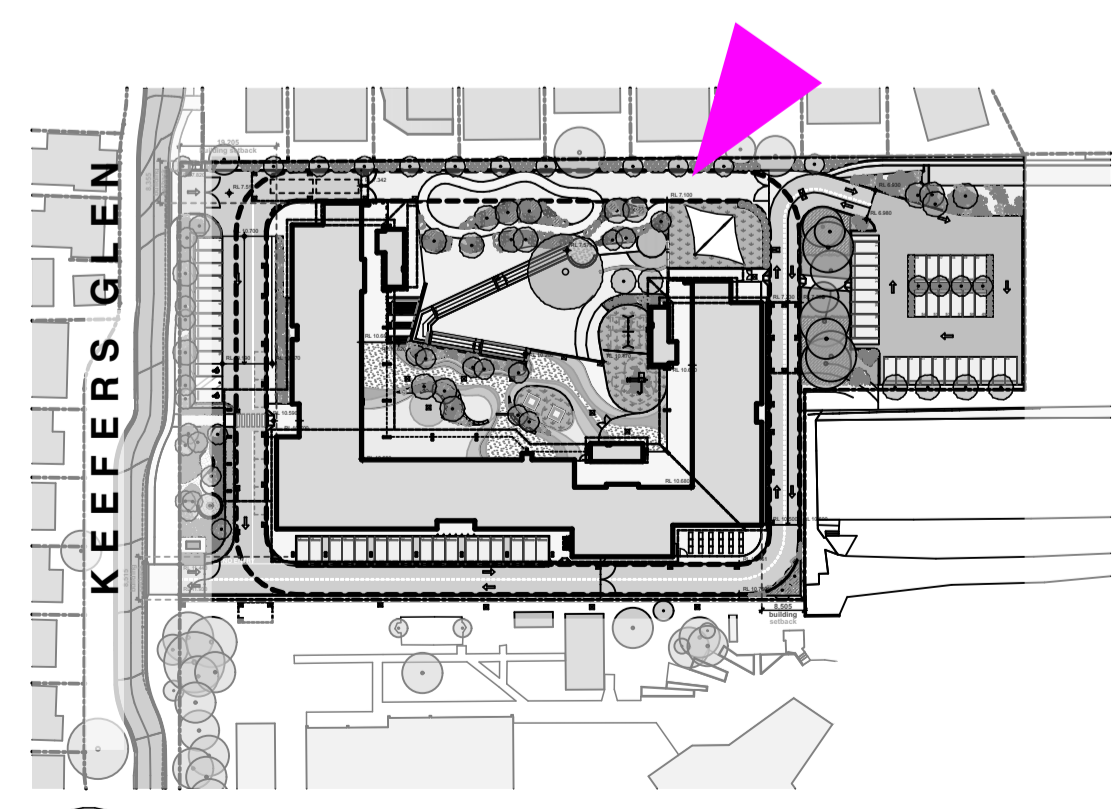
Drawn; RW  
 Checked; DM  
 Plot date; 1/7/2025

Scale; 1:1500 as noted @ A1

Project No;  
**2637.20**

Drawing No; **A0503**      Revision#; **B**

**North-East Perspective**



**02 Key Plan**  
 1:1500



Stanton Dahl Architects  
 PO Box 833, Epping, NSW 1710, Australia  
 Tel +61 2 8876 5300  
 www.stantondahl.com.au

All dimensions to be verified on site and any discrepancies referred to architect for determination, figured dimensions to take precedence over scaled dimensions.  
 This design including its associated drawings, images, etc. is the intellectual property of stanton dahl & associates pty limited and must not be referenced copied or used without written permission of stanton dahl & associates pty limited.

Rev	Issue	Date
A	Issue for SSDA	07/04/25
B	Issue for SSDA - Revised	01/07/25

Amendments



\*signage is indicative only and not part of this application

01 North-West Perspective - Street View  
 not to scale

**Note:**  
 All landscaping shown is indicative only and does not represent final planting selections. Please refer to the landscape drawings for planting schedules and quantities

Stanton Dahl Architects

Eileen O'Connor Catholic School

CATHOLIC SCHOOLS Broken Bay

RP INFRASTRUCTURE

Eileen O'Connor Catholic School

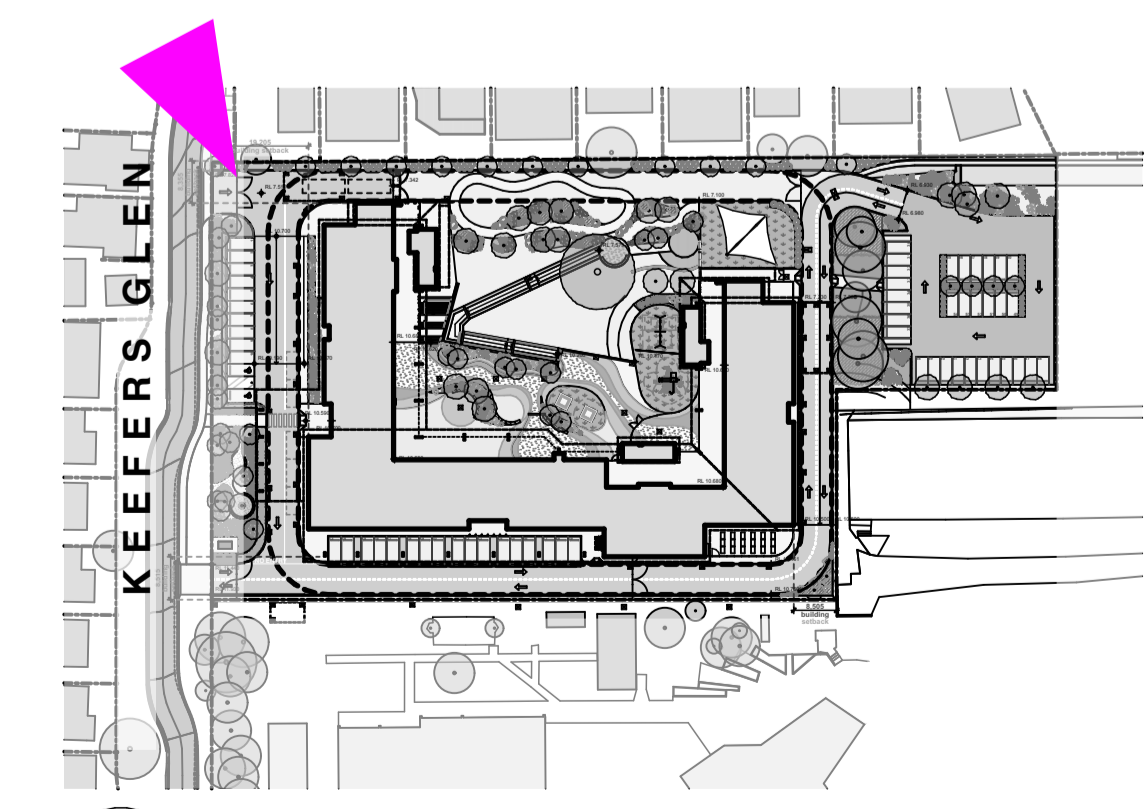
Catholic Schools Broken Bay (CSBB)  
 84 Gavenlock Road,  
 Mardi, NSW 2259

Drawn; RW  
 Checked; DM  
 Plot date; 1/7/2025

Scale; 1:1500 as noted @ A1

Project No;  
 2637.20

Drawing No; A0505  
 Revision#; B



02 Key Plan  
 1:1500

North-West - Street View

Stanton Dahl Architects  
 PO Box 833, Epping, NSW 1710, Australia  
 Tel +61 2 8876 5300  
 www.stantondahl.com.au

All dimensions to be verified on site and any discrepancies referred to architect for determination, figured dimensions to take precedence over scaled dimensions.  
 This design including its associated drawings, images, etc. is the intellectual property of stanton dahl & associates pty limited and must not be referenced copied or used without written permission of stanton dahl & associates pty limited.

Rev	Issue	Date
A	Issue for SSDA	07/04/25
B	Issue for SSDA - Revised	01/07/25

Amendments



01 North-West Perspective - Driveway  
 not to scale

**Stanton Dahl Architects**

**Eileen O'Connor Catholic School**

**CATHOLIC SCHOOLS Broken Bay**

**RP INFRASTRUCTURE**

Eileen O'Connor Catholic School

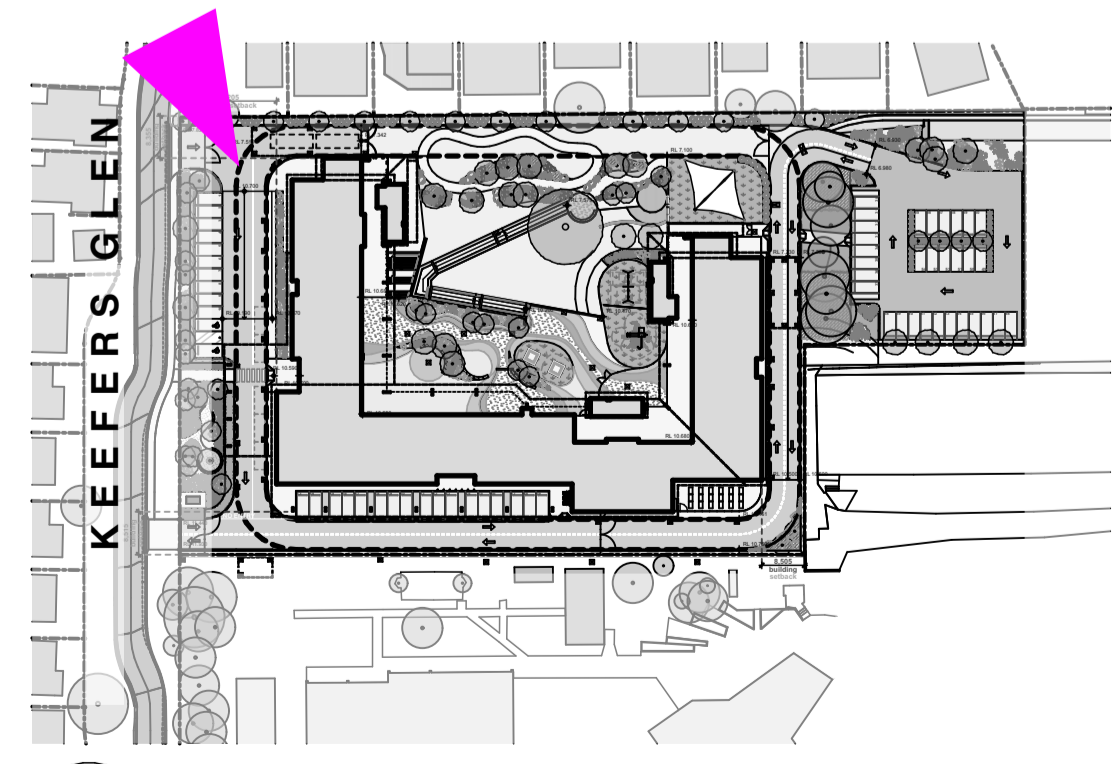
Catholic Schools Broken Bay (CSBB)  
 84 Gavenlock Road,  
 Mardi, NSW 2259

Drawn; RW  
 Checked; DM  
 Plot date; 1/7/2025  
 Scale; 1:1500 as noted @ A1

Project No;  
**2637.20**  
 Drawing No; **A0506**      Revision#; **B**

North-West - Driveway

**Note:**  
 All landscaping shown is indicative only and does not represent final planting selections. Please refer to the landscape drawings for planting schedules and quantities



02 Key Plan  
 1:1500

Stanton Dahl Architects  
 PO Box 833, Epping, NSW 1710, Australia  
 Tel +61 2 8876 5300  
 www.stantondahl.com.au

All dimensions to be verified on site and any discrepancies referred to architect for determination, figured dimensions to take precedence over scaled dimensions.  
 This design including its associated drawings, images, etc. is the intellectual property of stanton dahl & associates pty limited and must not be referenced copied or used without written permission of stanton dahl & associates pty limited.

Rev	Issue	Date
A	Issue for SSDA	07/04/25
B	Issue for SSDA - Revised	01/07/25

Amendments



**01 Western Perspective - Street View**  
 not to scale

**Note:**  
 All landscaping shown is indicative only and does not represent final planting selections. Please refer to the landscape drawings for planting schedules and quantities

**Stanton Dahl Architects**

**Eileen O'Connor Catholic School**

**CATHOLIC SCHOOLS Broken Bay**

**RP INFRASTRUCTURE**

**Eileen O'Connor Catholic School**

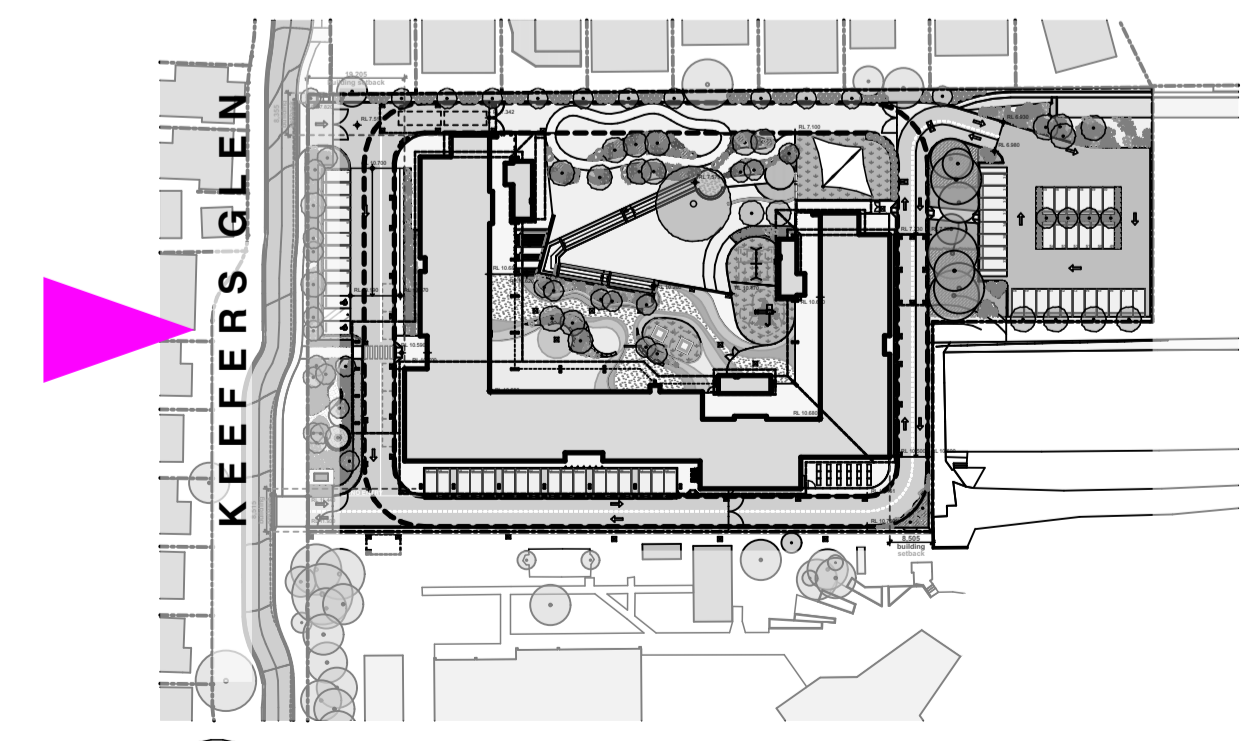
Catholic Schools Broken Bay (CSBB)  
 84 Gavenlock Road,  
 Mardi, NSW 2259

Drawn; RW  
 Checked; DM  
 Plot date; 1/7/2025

Scale; 1:1500 as noted @ A1

Project No;  
**2637.20**

Drawing No; **A0507**      Revision#; **B**



**02 Key Plan**  
 1:1500

Western Elevation -  
 Keefers Glen

Stanton Dahl Architects  
 PO Box 833, Epping, NSW 1710, Australia  
 Tel +61 2 8876 5300  
 www.stantondahl.com.au

All dimensions to be verified on site and any discrepancies referred to architect for determination, figured dimensions to take precedence over scaled dimensions.  
 This design including its associated drawings, images, etc. is the intellectual property of stanton dahl & associates pty limited and must not be referenced copied or used without written permission of stanton dahl & associates pty limited.

Rev	Issue	Date
A	Issue for SSDA	07/04/25
B	Issue for SSDA - Revised	01/07/25

Amendments



**01 South-West Perspective - Street View**  
 not to scale

**Stanton Dahl Architects**

**Eileen O'Connor Catholic School**

**CATHOLIC SCHOOLS Broken Bay**

**RP INFRASTRUCTURE**

**Eileen O'Connor Catholic School**

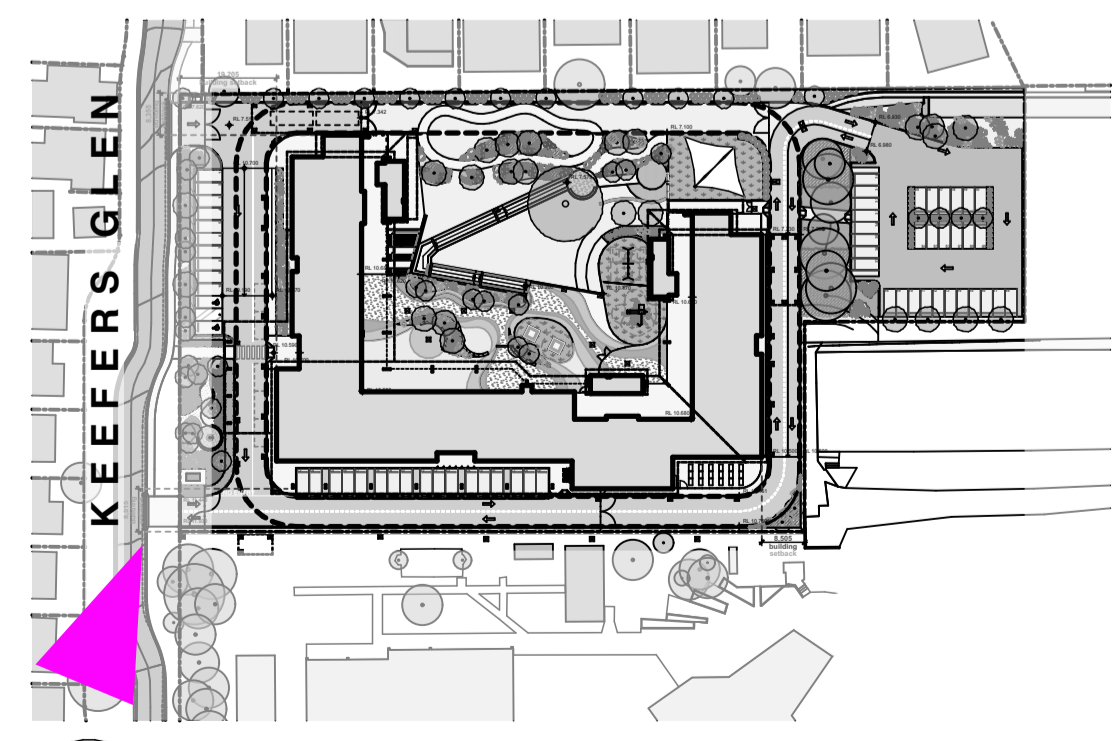
Catholic Schools Broken Bay (CSBB)  
 84 Gavenlock Road,  
 Mardi, NSW 2259

Drawn; RW  
 Checked; DM  
 Plot date; 1/7/2025

Scale; 1:1500 as noted @ A1

Project No;  
**2637.20**

Drawing No; **A0508**      Revision#; **B**



**02 Key Plan**  
 1:1500

**Note:**  
 All landscaping shown is indicative only and does not represent final planting selections. Please refer to the landscape drawings for planting schedules and quantities

Stanton Dahl Architects  
 PO Box 833, Epping, NSW 1710, Australia  
 Tel +61 2 8876 5300  
 www.stantondahl.com.au

All dimensions to be verified on site and any discrepancies referred to architect for determination, figured dimensions to take precedence over scaled dimensions.  
 This design including its associated drawings, images, etc. is the intellectual property of stanton dahl & associates pty limited and must not be referenced copied or used without written permission of stanton dahl & associates pty limited.

Rev	Issue	Date
A	Issue for SSDA	07/04/25
B	Issue for SSDA - Revised	01/07/25

Amendments



01 North-East Perspective - View from Eastern Carpark  
 not to scale

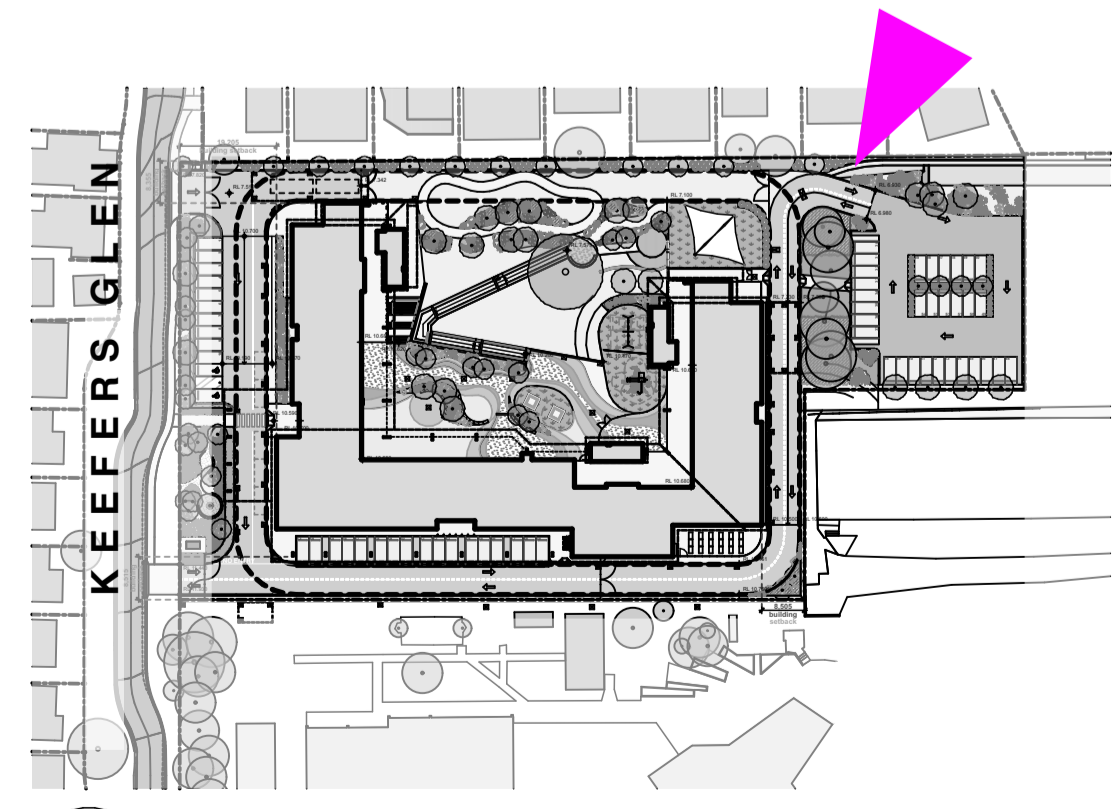
**Note:**  
 All landscaping shown is indicative only and does not represent final planting selections. Please refer to the landscape drawings for planting schedules and quantities

**Stanton Dahl Architects**

**Eileen O'Connor Catholic School**

**CATHOLIC SCHOOLS Broken Bay**

**RP INFRASTRUCTURE**



02 Key Plan  
 1:1500

**Eileen O'Connor Catholic School**

Catholic Schools Broken Bay (CSBB)  
 84 Gavenlock Road,  
 Mardi, NSW 2259

Drawn; RW  
 Checked; DM  
 Plot date; 1/7/2025

Scale; 1:1500 as noted @ A1

Project No;  
**2637.20**

Drawing No; **A0509**      Revision#; **B**

North-East - View from Eastern Carpark



Stanton Dahl Architects  
 PO Box 833, Epping, NSW 1710, Australia  
 Tel +61 2 8876 5300  
 www.stantondahl.com.au

All dimensions to be verified on site and any discrepancies referred to architect for determination, figured dimensions to take precedence over scaled dimensions.  
 This design including its associated drawings, images, etc. is the intellectual property of stanton dahl & associates pty limited and must not be referenced copied or used without written permission of stanton dahl & associates pty limited.

Rev	Issue	Date
A	Issue for SSDA	07/04/25
B	Issue for SSDA - Revised	01/07/25

Amendments



**01 Playground Perspective - View Looking West**  
 not to scale

**Note:**  
 All landscaping shown is indicative only and does not represent final planting selections. Please refer to the landscape drawings for planting schedules and quantities

**Stanton Dahl Architects**

**Eileen O'Connor Catholic School**

**CATHOLIC SCHOOLS Broken Bay**

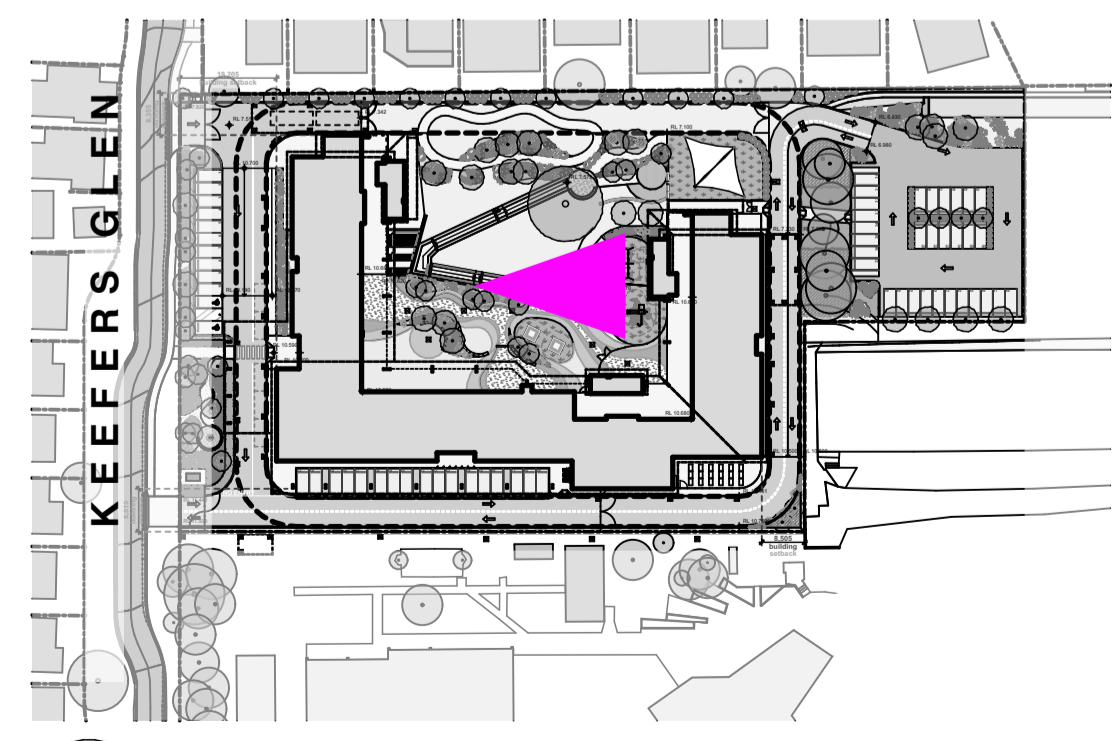
**RP INFRASTRUCTURE**

**Eileen O'Connor Catholic School**

Catholic Schools Broken Bay (CSBB)  
 84 Gavenlock Road,  
 Mardi, NSW 2259

Drawn; RW  
 Checked; DM  
 Plot date; 1/7/2025  
 Scale; 1:1500 as noted @ A1

Project No;  
**2637.20**  
 Drawing No; **A0511**      Revision#; **B**



**03 Key Plan**  
 1:1500

**Playground - View Looking West**

Stanton Dahl Architects  
 PO Box 833, Epping, NSW 1710, Australia  
 Tel +61 2 8876 5300  
 www.stantondahl.com.au

All dimensions to be verified on site and any discrepancies referred to architect for determination, figured dimensions to take precedence over scaled dimensions.  
 This design including its associated drawings, images, etc. is the intellectual property of stanton dahl & associates pty limited and must not be referenced copied or used without written permission of stanton dahl & associates pty limited.

Rev	Issue	Date
A	Issue for SSDA	07/04/25
B	Issue for SSDA - Revised	01/07/25

Amendments



**01 Playground Perspective - View Looking East**  
 not to scale

**Note:**  
 All landscaping shown is indicative only and does not represent final planting selections. Please refer to the landscape drawings for planting schedules and quantities

**Stanton Dahl Architects**

**Eileen O'Connor Catholic School**

**CATHOLIC SCHOOLS Broken Bay**

**RP INFRASTRUCTURE**

**Eileen O'Connor Catholic School**

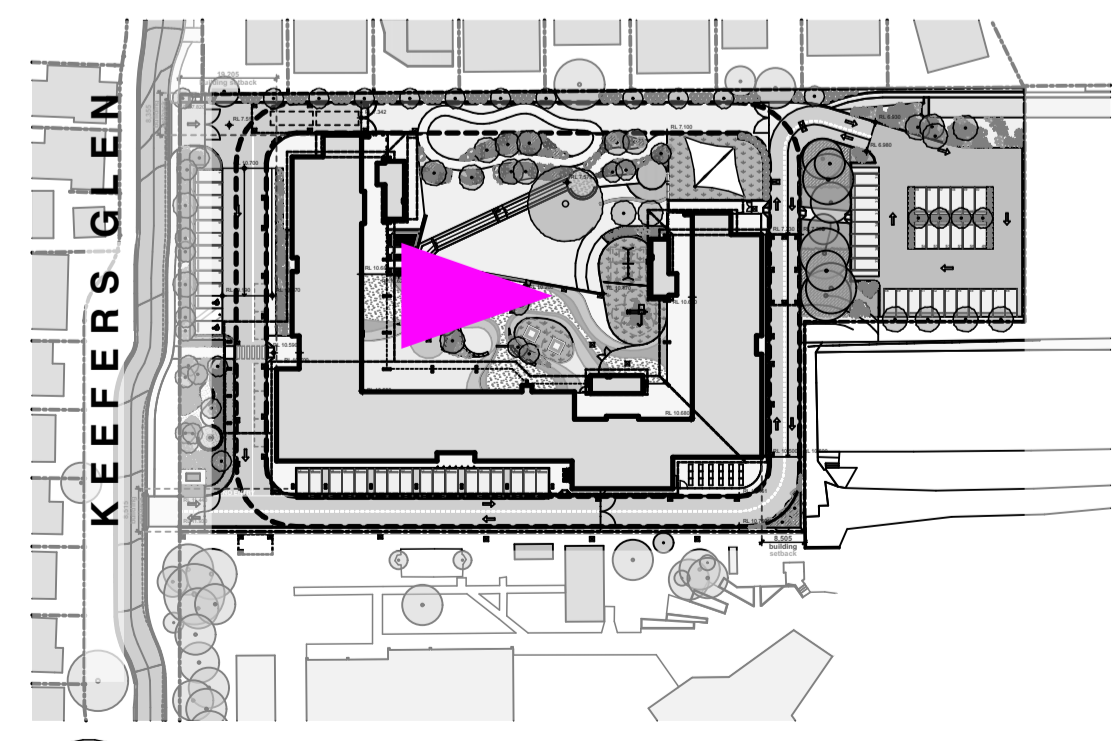
Catholic Schools Broken Bay (CSBB)  
 84 Gavenlock Road,  
 Mardi, NSW 2259

Drawn; RW  
 Checked; DM  
 Plot date; 1/7/2025

Scale; 1:1500 as noted @ A1

Project No;  
**2637.20**

Drawing No; **A0512**      Revision#; **B**



**02 Key Plan**  
 1:1500

**Playground - View Looking East**

Stanton Dahl Architects  
 PO Box 833, Epping, NSW 1710, Australia  
 Tel +61 2 8876 5300  
 www.stantondahl.com.au

All dimensions to be verified on site and any discrepancies referred to architect for determination, figured dimensions to take precedence over scaled dimensions.  
 This design including its associated drawings, images, etc. is the intellectual property of stanton dahl & associates pty limited and must not be referenced copied or used without written permission of stanton dahl & associates pty limited.

Rev	Issue	Date
A	Issue for SSDA	07/04/25
B	Issue for SSDA - Revised	01/07/25

Amendments



**01 Playground Perspective - View Looking North**  
 not to scale

**Note:**  
 All landscaping shown is indicative only and does not represent final planting selections. Please refer to the landscape drawings for planting schedules and quantities

**Stanton Dahl Architects**

**Eileen O'Connor Catholic School**

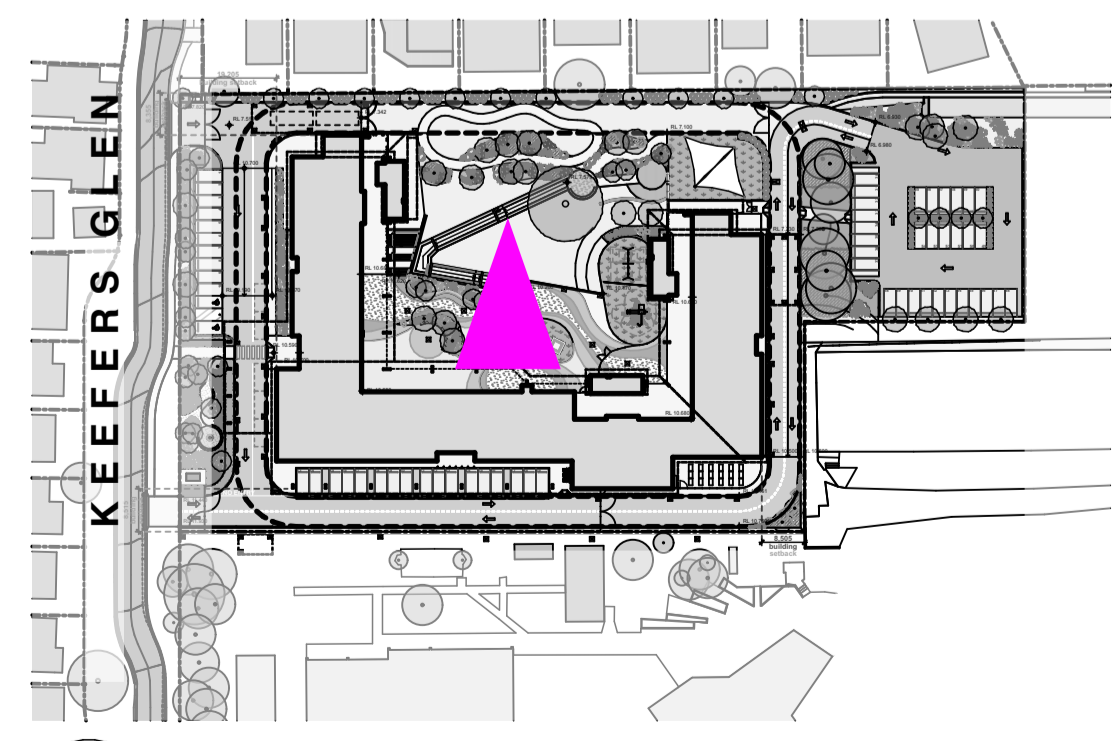
**CATHOLIC SCHOOLS Broken Bay**

**RP INFRASTRUCTURE**

**Eileen O'Connor Catholic School**  
 Catholic Schools Broken Bay (CSBB)  
 84 Gavenlock Road,  
 Mardi, NSW 2259

Drawn; RW  
 Checked; DM  
 Plot date; 1/7/2025  
 Scale; 1:1500 as noted @ A1

Project No;  
**2637.20**  
 Drawing No; **A0513**      Revision#; **B**



**02 Key Plan**  
 1:1500

**Playground - View Looking North**

Stanton Dahl Architects  
 PO Box 833, Epping, NSW 1710, Australia  
 Tel +61 2 8876 5300  
 www.stantondahl.com.au

All dimensions to be verified on site and any discrepancies referred to architect for determination, figured dimensions to take precedence over scaled dimensions.  
 This design including its associated drawings, images, etc. is the intellectual property of stanton dahl & associates pty limited and must not be referenced copied or used without written permission of stanton dahl & associates pty limited.

Rev	Issue	Date
A	Issue for SSDA	07/04/25
B	Issue for SSDA - Revised	01/07/25

Amendments



**01 Playground Perspective - View Looking South**  
 not to scale

**Note:**  
 All landscaping shown is indicative only and does not represent final planting selections. Please refer to the landscape drawings for planting schedules and quantities

**Stanton Dahl Architects**

**Eileen O'Connor Catholic School**

**CATHOLIC SCHOOLS Broken Bay**

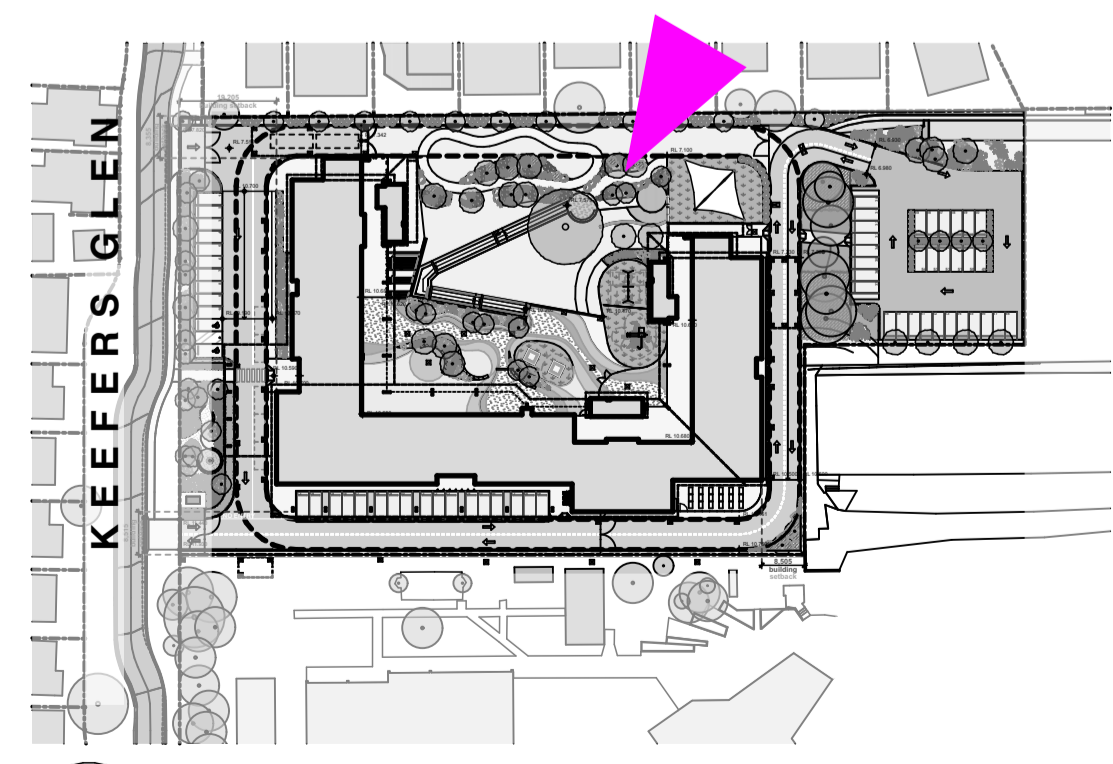
**RP INFRASTRUCTURE**

**Eileen O'Connor Catholic School**

Catholic Schools Broken Bay (CSBB)  
 84 Gavenlock Road,  
 Mardi, NSW 2259

Drawn; RW  
 Checked; DM  
 Plot date; 1/7/2025  
 Scale; 1:1500 as noted @ A1

Project No;  
**2637.20**  
 Drawing No; **A0514**      Revision#; **B**



**02 Key Plan**  
 1:1500

**Playground - View Looking South**

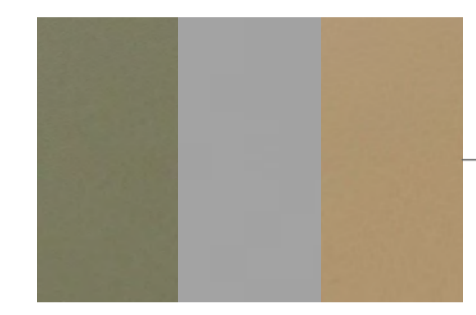
All dimensions to be verified on site and any discrepancies referred to architect for determination, figured dimensions to take precedence over scaled dimensions.  
 This design including its associated drawings, images, etc. is the intellectual property of stanton dahl & associates pty limited and must not be referenced copied or used without written permission of stanton dahl & associates pty limited.

Rev	Issue	Date
A	Issue for SSDA	07/04/25
B	Issue for SSDA - Revised	01/07/25

Amendments



Brickwork



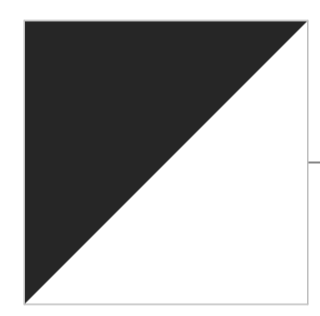
CFC Cladding



CFC Cladding



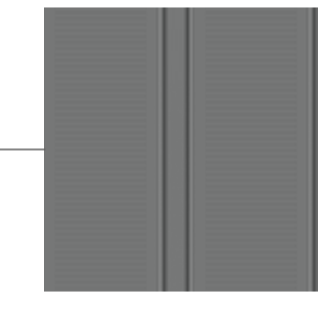
Fascias, gutters,  
downpipes,  
window frames



Powdercoated steel  
framed mesh screen



Painted  
render



Metal Roof



Timber-look  
Cladding



**01 External Facade - Typical Materials & Finishes Palette**  
not to scale

*please note:  
these images are indicative of the proposed palette  
of materials and are subject to availability and cost  
constraints associated with the project*

