

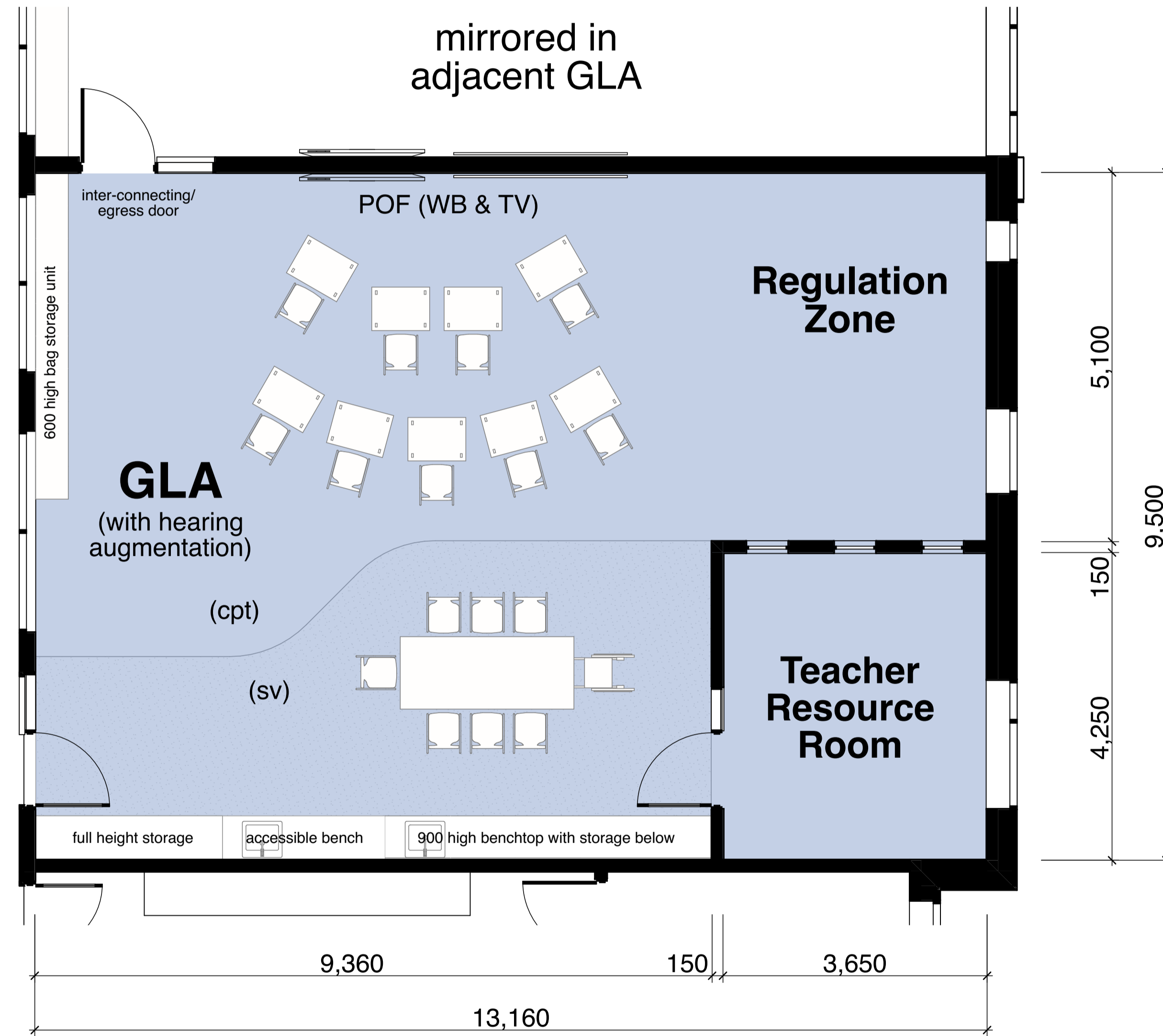
All dimensions to be verified on site and any discrepancies referred to architect for determination, figured dimensions to take precedence over scaled dimensions.

This design including its associated drawings, images, etc. is the intellectual property of stanton dahl & associates pty limited and must not be referenced copied or used without written permission of stanton dahl & associates pty limited.

Rev	Issue	Date
A	Issue for SSSA	07/04/25
B	Issue for SSSA - Revised	01/07/25

Amendments

Open Verandah/  
Undercroft



01 GLA Detail Plan  
1:50

Legend

(floor plans)  
 note: drawing may not contain all items listed below

ac	air conditioner condenser	comms	communications	fe	fire extinguisher	ht	hose tap	rw(1)	retaining wall (type)	u/b	under-bench oven
acc	accessible	conc	concrete	ftl	finished floor level	hwu	hot water unit	rwt	rainwater tank	vb	vanity bench
adhc	adhc ageing, disability & home care	cpt	carpet	fhr	fire hose reel	hyd	hydrant	sc	steel column	wc	water closet
amb	ambulant	ct	cooktop	fm	floor mat	lb	letter box	sfc	steel float concrete	wm	washing machine
ap	access panel	dgpo	double general purpose outlet	FRL	Fire Resistance Level	lod	lod screen (wall mounted)	sh	sunhood/shading device	wo	wall oven
bal(1)	balustrade (type)	dp	downpipe	frz	freezer	lin	linen cupboard	shr	shower	ws	wheel stop
bic	broom finish concrete	dsw	dishwasher	fs	fridge space	mh	manhole	sj	saw cut joint		
bol	bollard	edb	electrical distribution board	ft	fence	mw	microwave	skl	skylight / skytube		
bsn(1)	basin (type)	fbx	floor box	fw	floor waste	nts	not to scale	snk	sink		
cbus	c-bus control	fip	fire indicator panel	gb	garbage bin	o/a	overall	spd	spoon drain		
cfc	compressed fibre cement	ej	expansion joint	gpo	general purpose outlet	ofc	off form concrete	ssh	safety shower		
cft	ceramic floor tile	ev	electric vehicle charging station	gt	gate	pav(1)	paving (type)	sv(1)	sheet vinyl (type)		
cj	control joint	ex	existing	gtd	grated drain	pos	private open space	swp	stormwater pit		
cth	clothes line	fb(1)	face brickwork	hlc	high level cupboard	rs	refrigerator space	tfb	timber floorboards		
col	column	fc	fibre cement	hr(1)	handrail (type)	rsh	recessed soap holder	tgsi	tactile ground surface indicator		

Stanton Dahl Architects

Eileen O'Connor Catholic School

CATHOLIC SCHOOLS Broken Bay

RP INFRASTRUCTURE

Eileen O'Connor Catholic School

Catholic Schools Broken Bay (CSBB)  
 84 Gavenlock Road,  
 Mardi, NSW 2259

Drawn: RW  
 Checked: DM  
 Plot date: 1/7/2025

Scale: 1:50 as noted @ A1

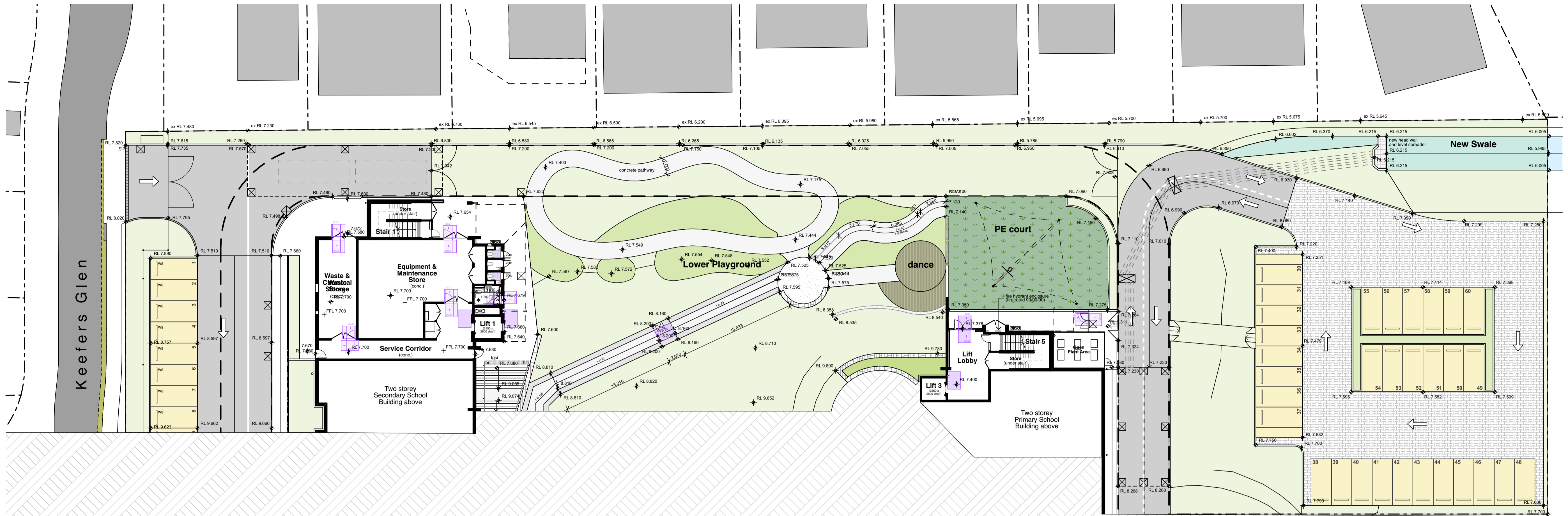
Project No:  
2637.20

Drawing No: A0211  
 Revision#: B

Typical GLA Floor Plan

All dimensions to be verified on site and any discrepancies referred to architect for determination, figured dimensions to take precedence over scaled dimensions.  
 This design including its associated drawings, images, etc. is the intellectual property of stanton dahl & associates pty limited and must not be referenced copied or used without written permission of stanton dahl & associates pty limited.

Rev	Issue	Date
A	Issue for SSDA	07/04/25
B	Issue for SSDA - Revised	01/07/25



Amendments

**01 Access Plan Lower Ground**  
 1:250

**Legend** (floor plans)

note: drawing may not contain all items listed below

ac	air conditioner condenser	comms	communications	fe	fire extinguisher	ht	hose tap	rw(1)	retaining wall (type)	u/b	under-bench oven
acc	accessible	conc	concrete	ffi	finished floor level	hhu	hot water unit	rwt	rainwater tank	vb	vanity bench
adhc	adhc ageing, disability & home care	cpt	carpet	fhr	fire hose reel	hyd	hydrant	sc	steel column	wc	water closet
amb	ambulant	ct	coctop	fm	floor mat	lb	letter box	sfc	steel float concrete	wm	washing machine
ap	access panel	dgpo	double general purpose outlet	FRL	Fire Resistance Level	lod	lod screen (wall mounted)	sh	sunhood/shading device	wo	wall oven
bal(1)	balustrade (type)	dp	downdrip	frz	freezer	lin	linen cupboard	shr	shower	ws	wheel stop
bic	broom finish concrete	dhw	dishwasher	fs	fridge space	sj	saw cut joint	skj	skylight / skylube		
bol	bollard	edb	electrical distribution board	ft	fence	skl	skylight / skylube	snk	sink		
bsn(1)	basin (type)	fbx	floor box	fw	floor waste	o/a	overall	spd	spoon drain		
cbus	c-bus control	fip	fire indicator panel	gb	garbage bin	o/c	off form concrete	ssh	safety shower		
cfc	compressed fibre cement	ej	expansion joint	gpo	general purpose outlet	pav(1)	paving (type)	sv(1)	sheet vinyl (type)		
cft	ceramic floor tile	ev	electric vehicle charging station	gt	gate	swp	stormwater pit	tfb	timber floorboards		
cj	control joint	ex	existing	gtd	grated drain	rs	refridgerator space	tsi	tactile ground surface indicator		
chl	clothes line	fb(1)	face brickwork	hlc	high level cupboard	rsh	recessed soap holder				
col	column	fc	fibre cement	hr(1)	handrail (type)						



Eileen O'Connor  
 Catholic School

Catholic Schools Broken Bay  
 (CSBB)  
 84 Gavenlock Road,  
 Mardi, NSW 2259

Drawn: RW  
 Checked: DM  
 Plot date: 1/7/2025

Scale: 1:250 as noted @ A1

Project No:  
 2637.20

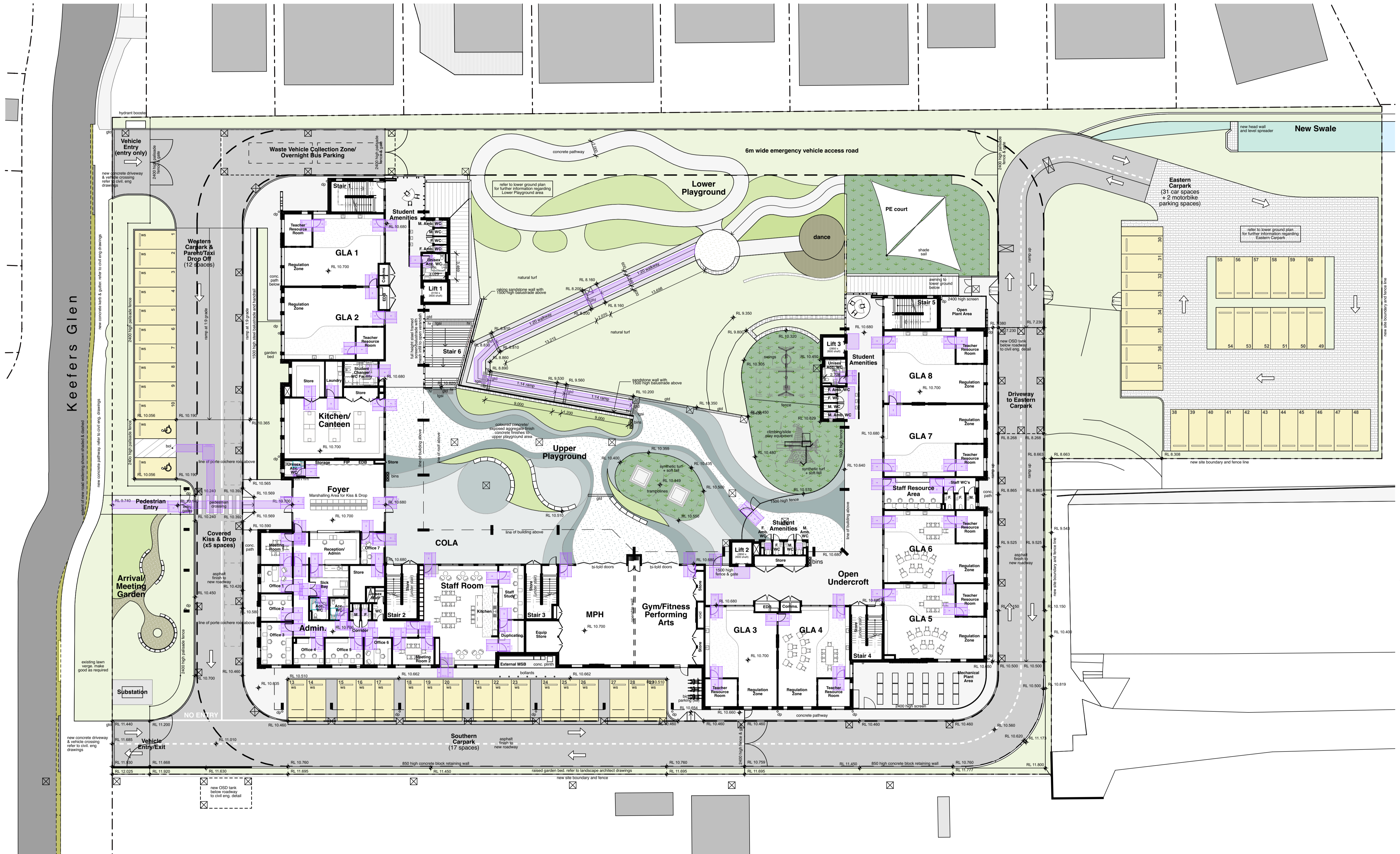
Drawing No: A0251  
 Revision#: B

Access Plan Lower  
 Ground

All dimensions to be verified on site and any discrepancies referred to architect for determination, figured dimensions to take precedence over scaled dimensions.  
 This design including its associated drawings, images, etc. is the intellectual property of stanton dahl & associates pty limited and must not be referenced copied or used without written permission of stanton dahl & associates pty limited.

Rev	Issue	Date
A	Issue for SSDA	07/04/25
B	Issue for SSDA - Revised	01/07/25

Amendments



**01 Access Plan Ground**  
 1:250

Legend (floor plans)	
note: drawing may not contain all items listed below	
ac	air conditioner condenser
acc	accessible
adhc	adhc ageing, disability & home care
amb	ambulant
ap	access panel
bal(1)	balustrade (type)
bic	broom finish concrete
bol	bollard
bsn(1)	basin (type)
cbus	c-bus control
clc	compressed fibre cement
ct	ceramic floor tile
cj	control joint
chl	clothes line
col	column
comms	communications
conc	concrete
cpt	carpet
ct	cocktop
dppo	double general purpose outlet
dp	downpipe
dhw	dishwasher
edb	electrical distribution board
fbx	floor box
fip	fire indicator panel
ej	expansion joint
ev	electric vehicle charging station
ex	existing
fb(1)	face brickwork
fc	fibre cement
fe	fire extinguisher
fl	finished floor level
fhr	fire hose reel
fm	floor mat
FRL	Fire Resistance Level
frz	freezer
fs	fridge space
ft	fence
fw	floor waste
gb	garbage bin
gpo	general purpose outlet
gt	gate
gtd	grated drain
hlc	high level cupboard
hr(1)	handrail (type)
ht	hose tap
hwu	hot water unit
hyd	hydrant
lb	letter box
lod	lod screen (wall mounted)
lin	linen cupboard
mh	manhole
mic	microwave
mis	not to scale
o/a	overall
ofc	off form concrete
pav(1)	paving (type)
pos	private open space
rs	refrigerator space
rsh	recessed soap holder
rw(1)	retaining wall (type)
rwt	rainwater tank
sc	steel column
sfc	steel float concrete
sh	sunhood/shading device
shr	shower
sj	saw cut joint
skl	skylight / skylube
snk	sink
spd	spoon drain
ssh	safety shower
sv(1)	sheet vinyl (type)
swp	stormwater pit
tfb	timber floorboards
tgsi	tactile ground surface indicator
u/b	under-bench oven
vb	vanity bench
wc	water closet
wm	washing machine
wo	wall oven
ws	wheel stop

**Stanton Dahl Architects**

**Eileen O'Connor Catholic School**

**CATHOLIC SCHOOLS Broken Bay**

**RP INFRASTRUCTURE**

**Eileen O'Connor Catholic School**

Catholic Schools Broken Bay (CSBB)  
 84 Gavenlock Road,  
 Mardi, NSW 2259

Drawn: RW  
 Checked: DM  
 Plot date: 1/7/2025

Scale: 1:250 as noted @ A1

Project No:  
**2637.20**

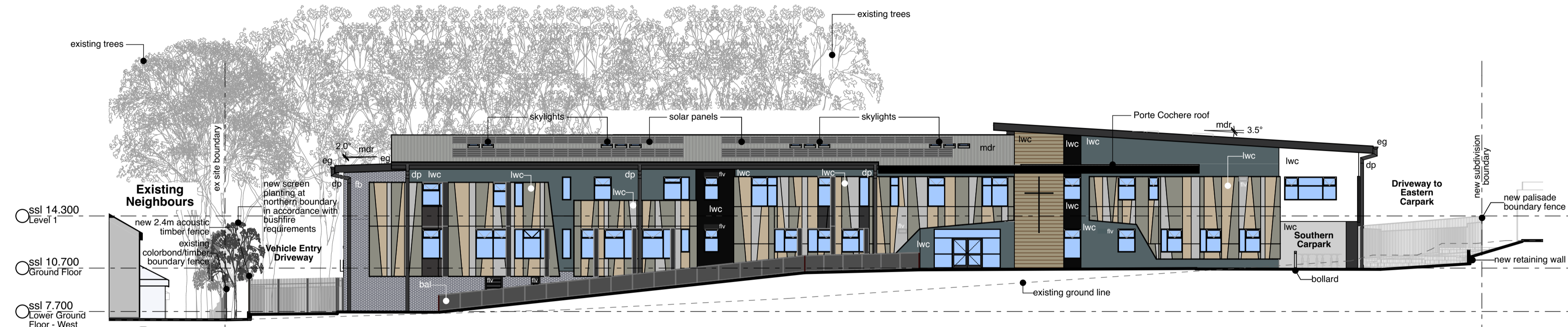
Drawing No: **A0252**      Revision#: **B**

**Access Plan Ground**

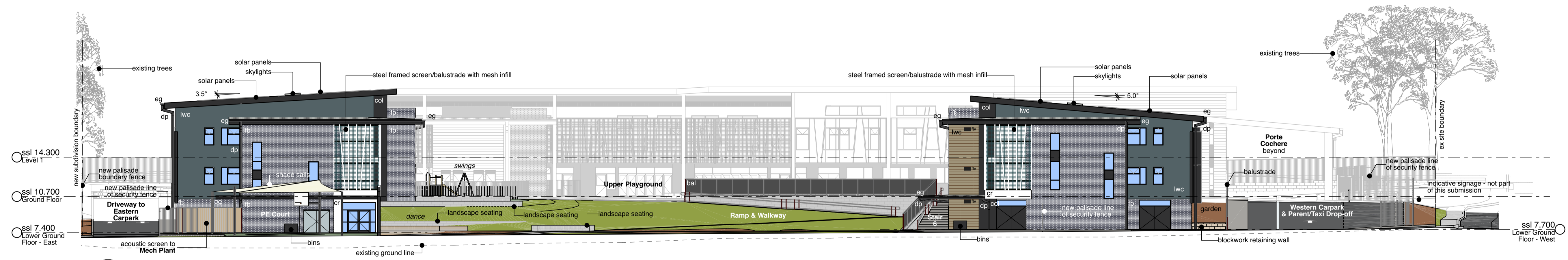




**01 West Elevation from Keefers Glen**  
 1:200



**02 West Elevation from Driveway through Porte Cochere**  
 1:200



**03 North Elevation**  
 1:200



**04 East Elevation**  
 1:200

**Legend**

(elevation & sections)	
ald	aluminum framed glazed door suite
alw	aluminum framed window
dms	decorative metal screen
dp	downpipe
eg	eaves gutter
egl	existing ground line
fb	face brickwork
lwc	lightweight cladding
mdr	metal deck roof
nw	retaining wall
wh	window sunhood

notes:  
 1. new trees removed for clarity unless noted otherwise  
 2. additional louvres, dampers etc may be required to be added during design development

Stanton Dahl Architects  
 PO Box 833, Epping, NSW 1710, Australia  
 Tel +61 2 8876 5300  
 www.stantondahl.com.au

All dimensions to be verified on site and any discrepancies referred to architect for determination. figured dimensions to take precedence over scaled dimensions.  
 This design including its associated drawings, images, etc. is the intellectual property of stanton dahl & associates pty limited and must not be referenced copied or used without written permission of stanton dahl & associates pty limited.

Rev	Issue	Date
A	Issue for SSDA	07/04/25
B	Issue for SSDA - Revised	01/07/25

Amendments

**Stanton Dahl Architects**

**Eileen O'Connor Catholic School**

**CATHOLIC SCHOOLS Broken Bay**

RP INFRASTRUCTURE

**Eileen O'Connor Catholic School**

Catholic Schools Broken Bay (CSBB)  
 84 Gavenlock Road,  
 Mardi, NSW 2259

Drawn: RW  
 Checked: DM  
 Plot date: 1/7/2025

Scale: 1:200 as noted @ A1

Project No:  
**2637.20**

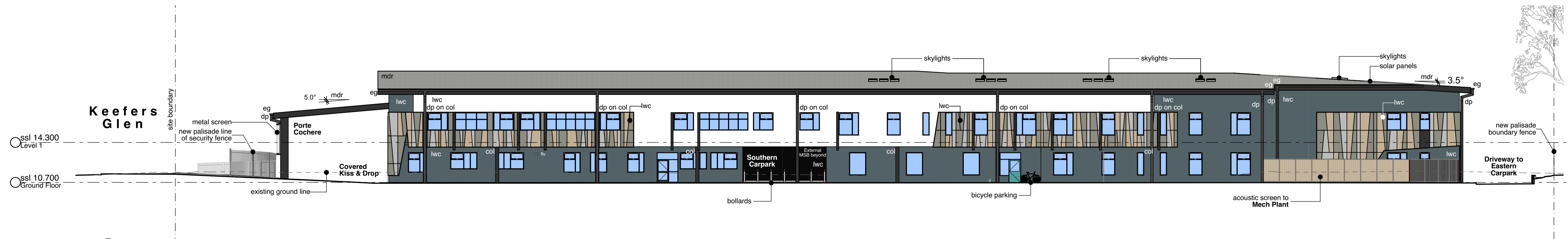
Drawing No:  
**A0301**      Revision#:  
**B**

**Elevations 1**

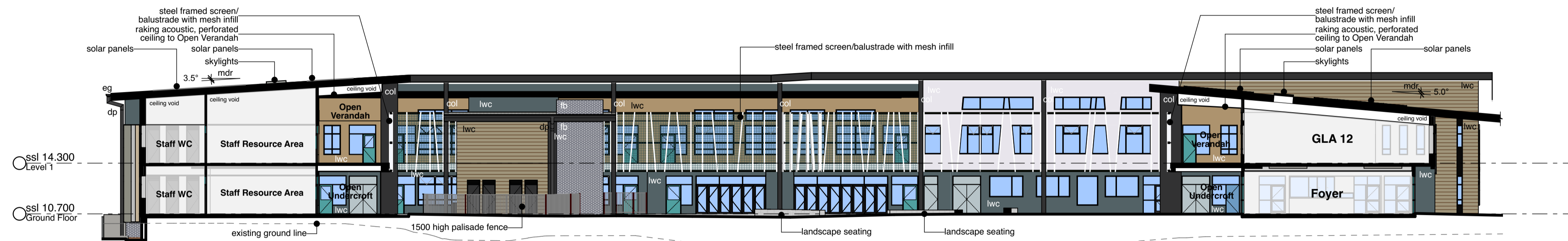
All dimensions to be verified on site and any discrepancies referred to architect for determination. Figured dimensions to take precedence over scaled dimensions.  
 This design including its associated drawings, images, etc. is the intellectual property of Stanton Dahl & Associates Pty Limited and must not be referenced copied or used without written permission of Stanton Dahl & Associates Pty Limited.

Rev	Issue	Date
A	Issue for SSDA	07/04/25
B	Issue for SSDA - Revised	01/07/25

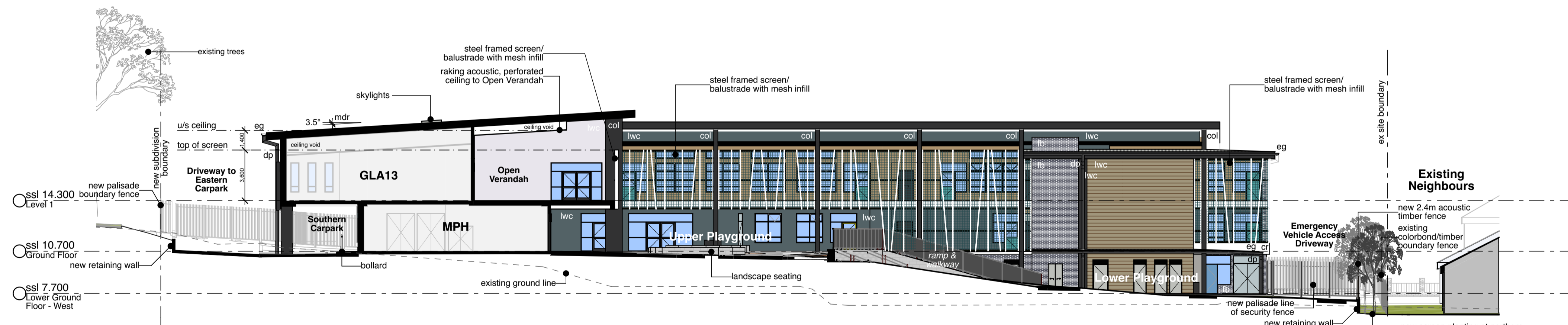
Amendments



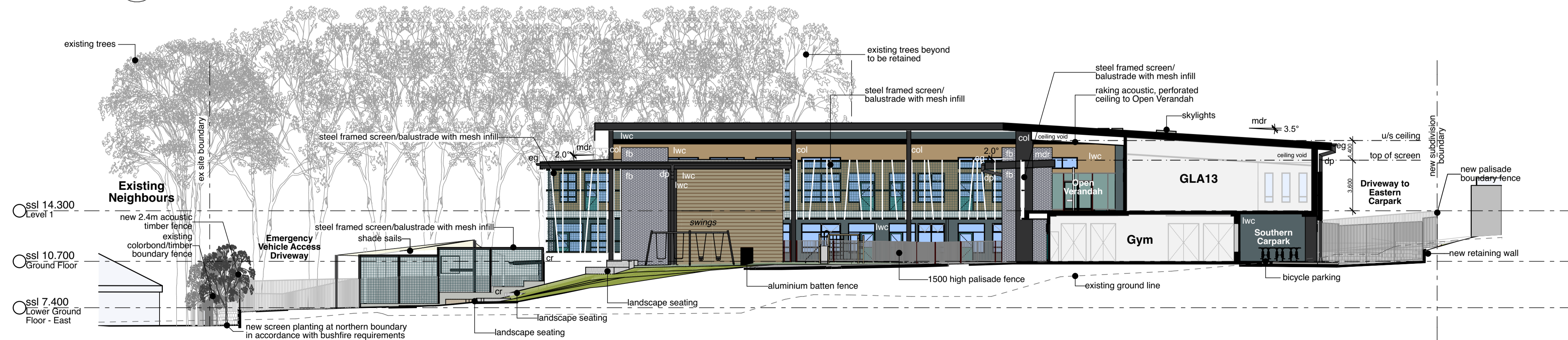
01 South Elevation  
 1:200



02 North Internal Elevation  
 1:200



03 East Internal Elevation  
 1:200



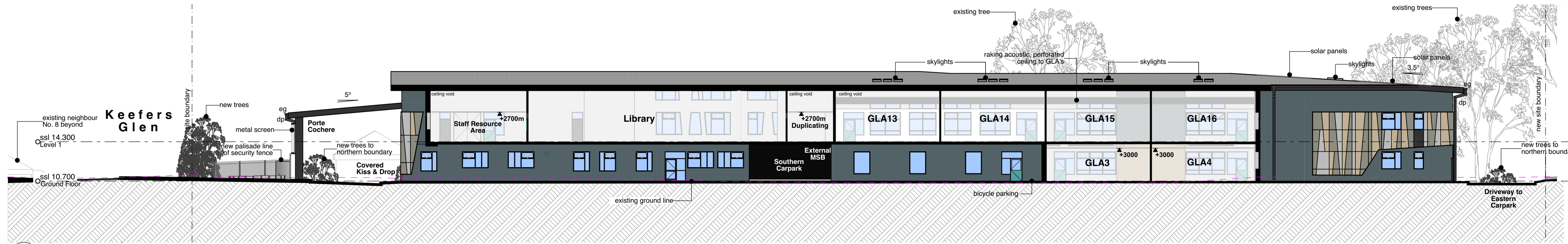
04 West Internal Elevation  
 1:200

Legend (elevation & sections)  
 note: drawing may not contain all items listed below

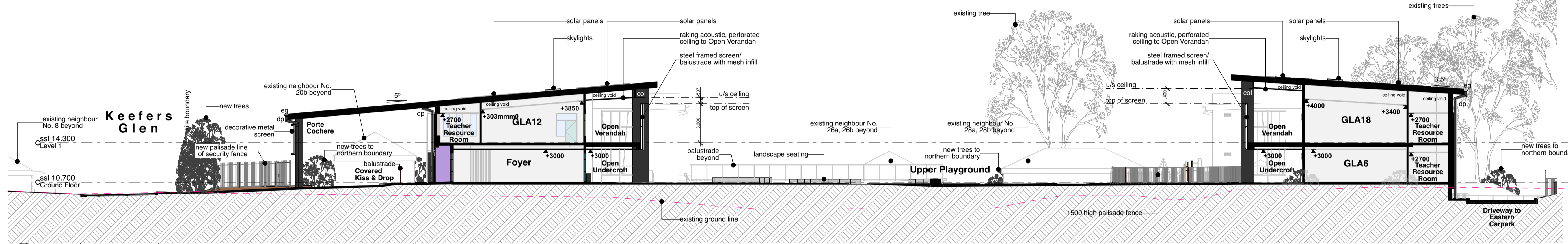
ald	aluminium framed glazed door suite
alw	aluminium framed window
dms	decorative metal screen
dp	downpipe
eg	eaves gutter
egl	existing ground line
fb	face brickwork
lwc	lightweight cladding
mdr	metal deck roof
nw	retaining wall
wh	window sunhood

notes:  
 1. new trees removed for clarity unless noted otherwise  
 2. additional louvres, dampers etc may be required to be added during design development

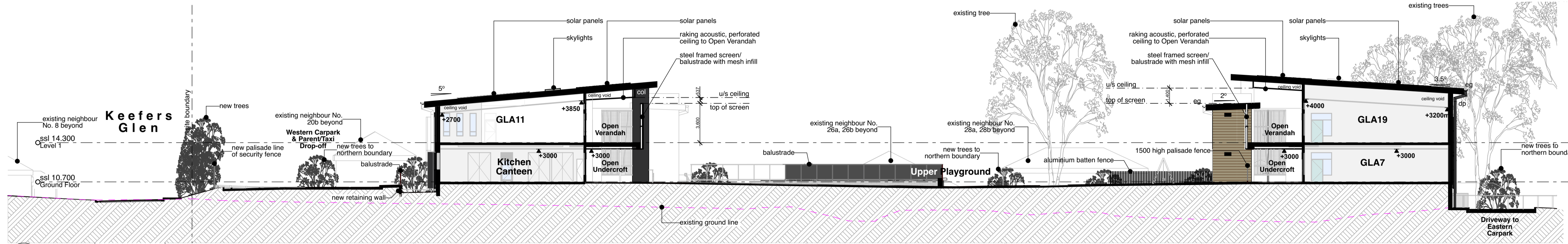




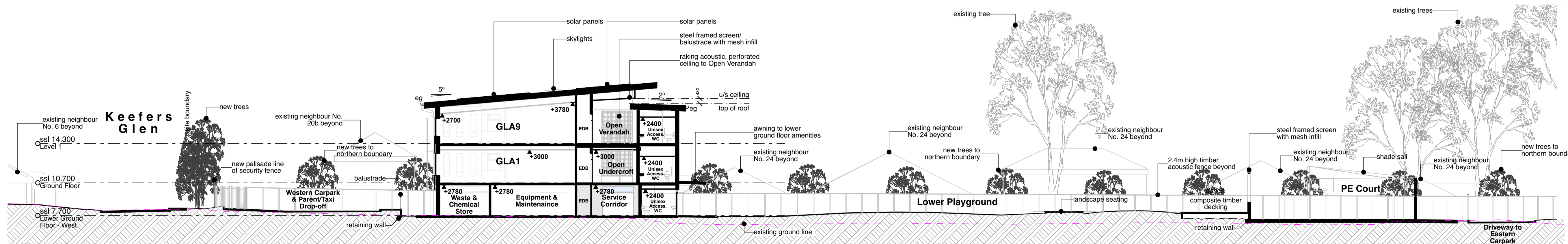
01 Section 05  
 1:200



02 Section 06  
 1:200



03 Section 07  
 1:200



04 Section 08  
 1:200

- Legend** (elevation & sections)  
 new drawing may not contain all items listed below
- aid aluminium framed glazed door suite
  - alw aluminium framed window
  - dms decorative metal screen
  - dp downpipe
  - eg eaves gutter
  - egl existing ground line
  - fb face brickwork
  - lwc lightweight cladding
  - mdr metal deck roof
  - rw retaining wall
  - wh window sunhood

notes:  
 1. new trees removed for clarity unless noted otherwise  
 2. additional louvres, dampers etc may be required to be added during design development

Stanton Dahl Architects  
 PO Box 833, Epping, NSW 1710, Australia  
 Tel +61 2 8876 5300  
 www.stantondahl.com.au

All dimensions to be verified on site and any discrepancies referred to architect for determination. Figured dimensions to take precedence over scaled dimensions.  
 This design including its associated drawings, images, etc. is the intellectual property of stanton dahl & associates pty limited and must not be referenced copied or used without written permission of stanton dahl & associates pty limited.

Rev	Issue	Date
A	Issue for SSDA	07/04/25
B	Issue for SSDA - Revised	01/07/25

Amendments

**Stanton Dahl Architects**

**Eileen O'Connor Catholic School**

**CATHOLIC SCHOOLS Broken Bay**

RP INFRASTRUCTURE

**Eileen O'Connor Catholic School**

Catholic Schools Broken Bay (CSBB)  
 84 Gavenlock Road,  
 Mardi, NSW 2259

Drawn: RW  
 Checked: DM  
 Plot date: 1/7/2025

Scale: 1:200 as noted @ A1

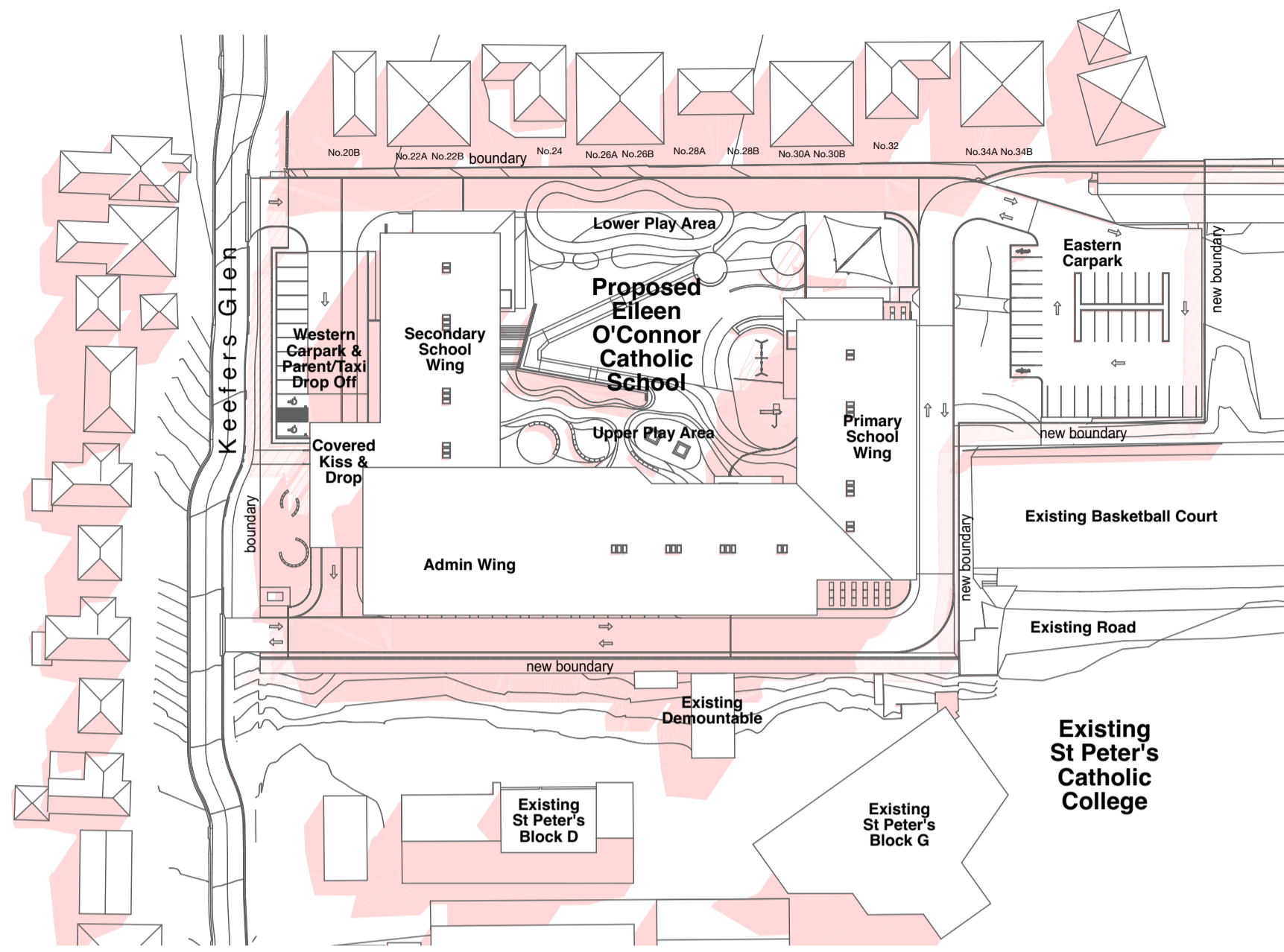
Project No:  
 2637.20

Drawing No: A0312  
 Revision#: B

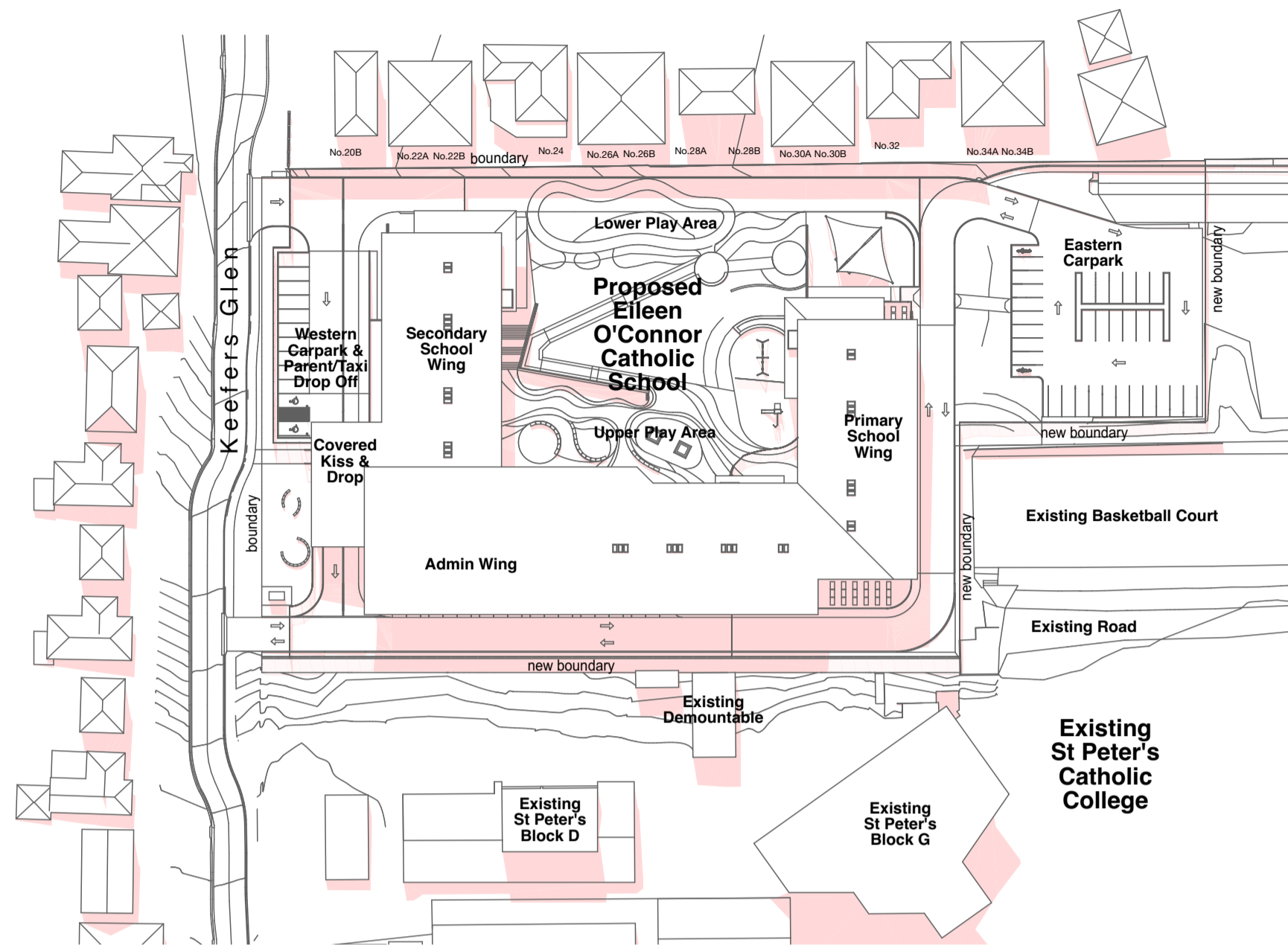
Sections 2

All dimensions to be verified on site and any discrepancies referred to architect for determination. Figured dimensions to take precedence over scaled dimensions.  
 This design including its associated drawings, images, etc. is the intellectual property of Stanton Dahl & Associates Pty Limited and must not be referenced copied or used without written permission of Stanton Dahl & Associates Pty Limited.

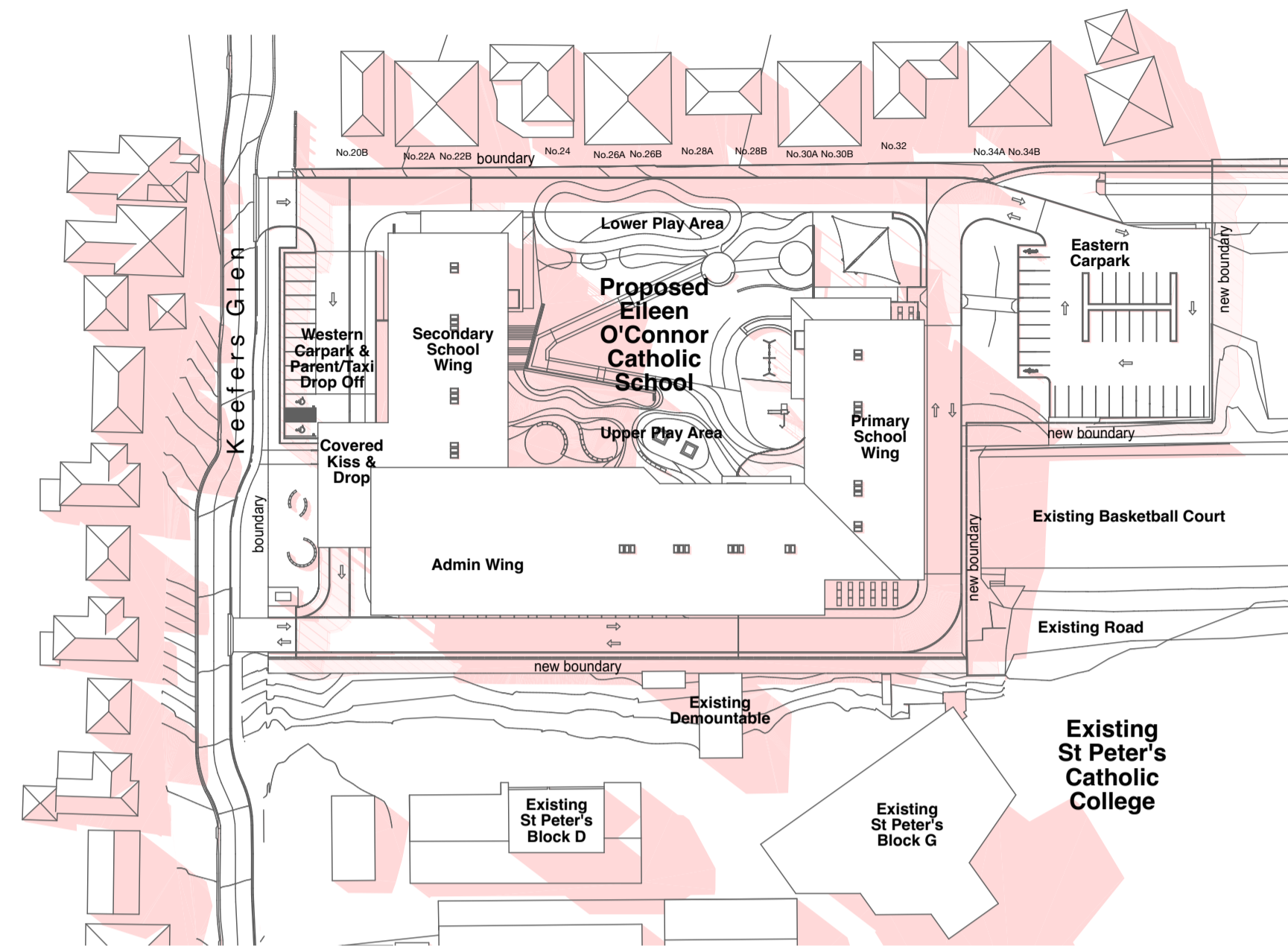
Rev	Issue	Date
A	Issue for SSDA	07/04/25
B	Issue for SSDA - Revised	01/07/25



01 Shadows June 9am  
 1:1000

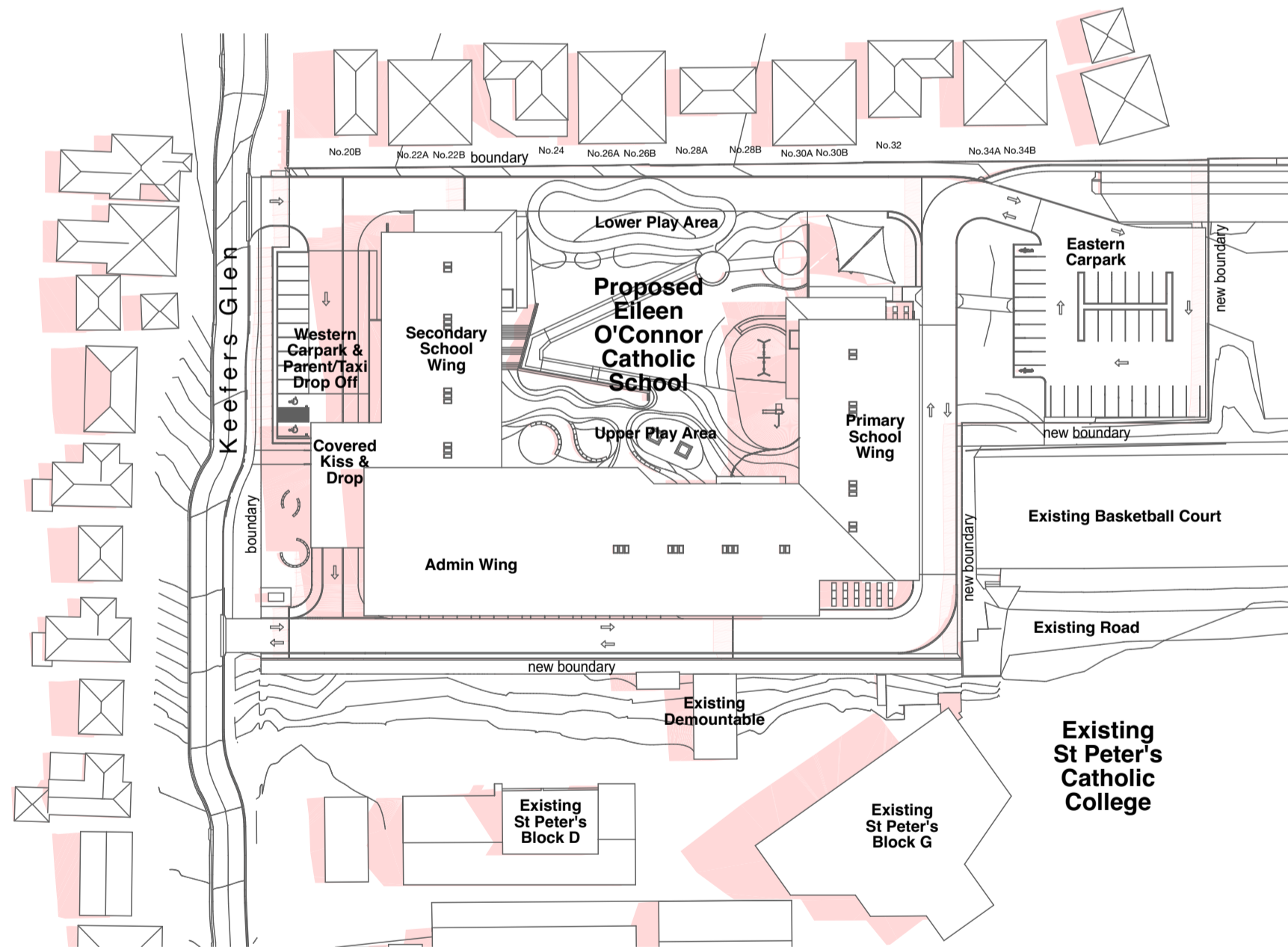


02 Shadows June 12noon  
 1:1000

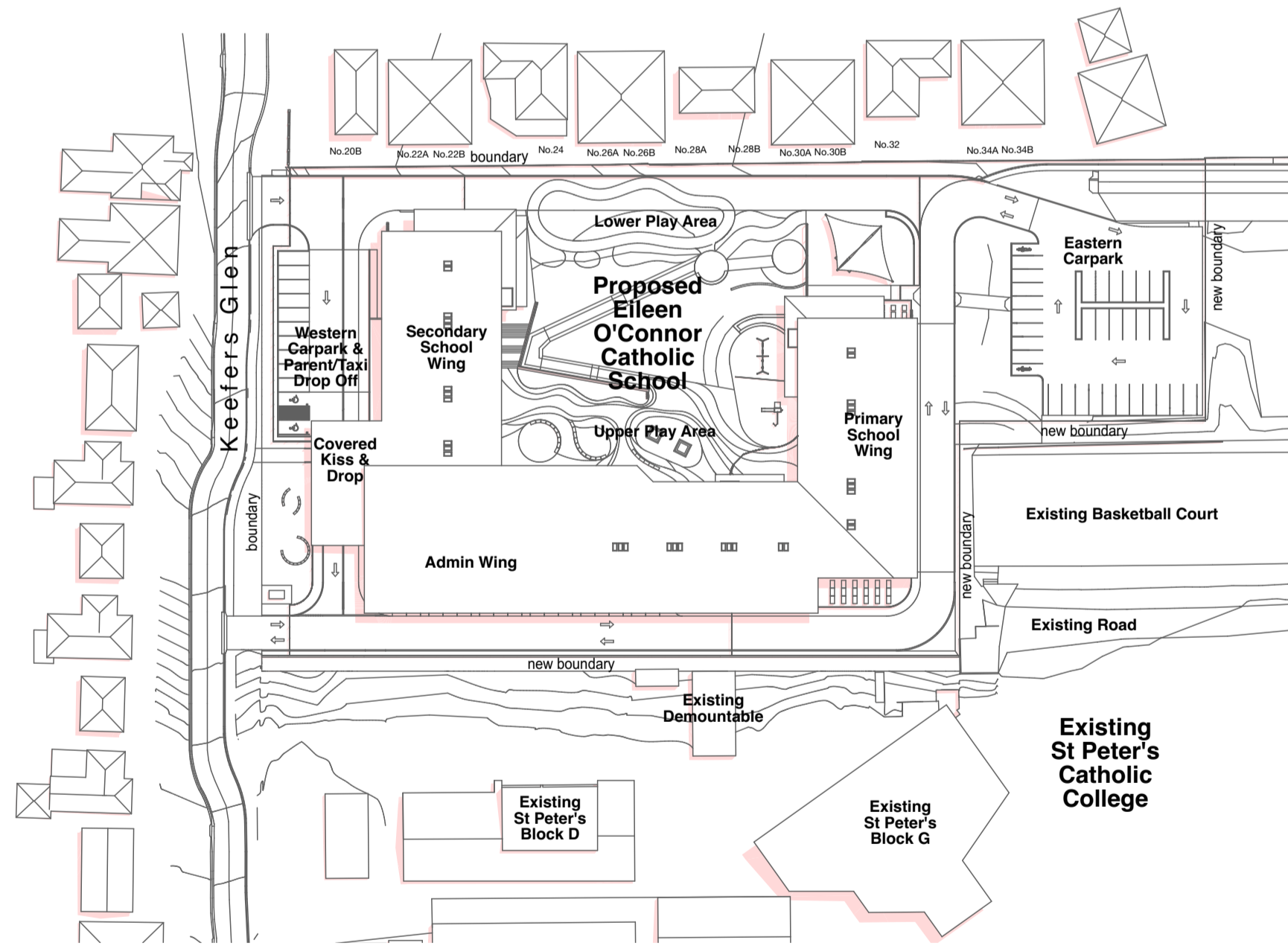


03 Shadows June 3pm  
 1:1000

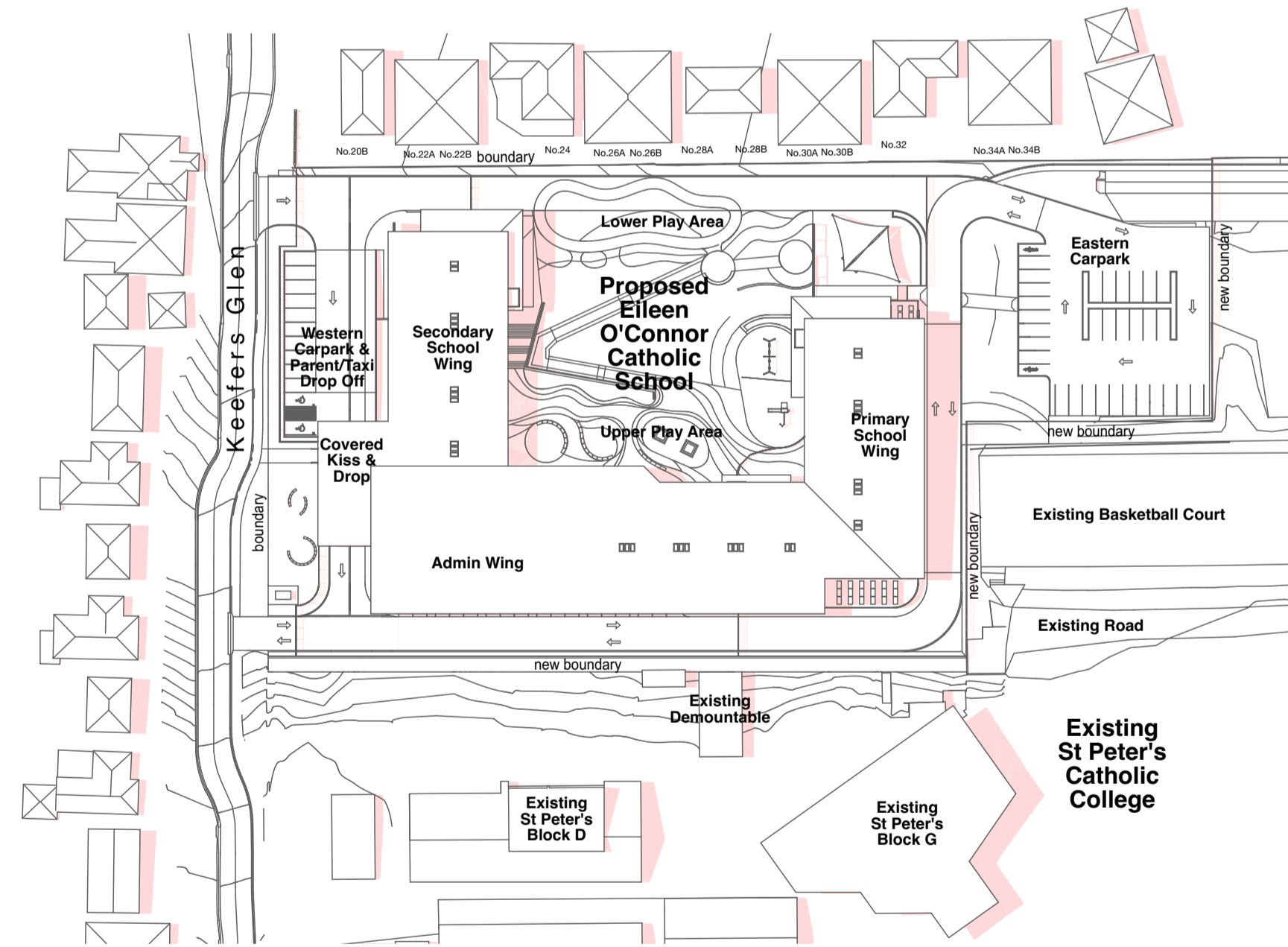
Amendments



04 Shadows December 9am  
 1:1000



05 Shadows December 12noon  
 1:1000



06 Shadows December 3pm  
 1:1000



Stanton Dahl Architects  
 PO Box 833, Epping, NSW 1710, Australia  
 Tel +61 2 8876 5300  
 www.stantondahl.com.au

All dimensions to be verified on site and any discrepancies referred to architect for determination, figured dimensions to take precedence over scaled dimensions.  
 This design including its associated drawings, images, etc. is the intellectual property of stanton dahl & associates pty limited and must not be referenced copied or used without written permission of stanton dahl & associates pty limited.

Rev	Issue	Date
A	Issue for SSDA	07/04/25
B	Issue for SSDA - Revised	01/07/25

Amendments



**Stanton Dahl Architects**  
 Architecture in the  
 Heart of the Community

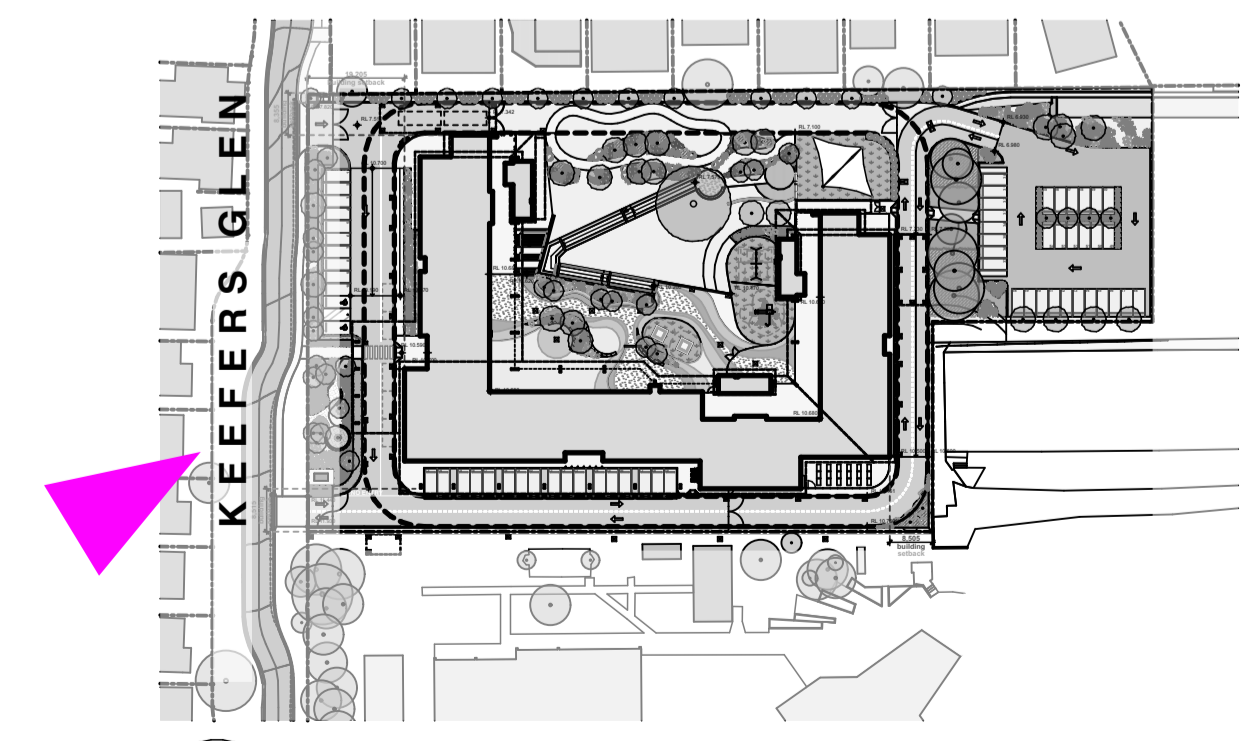
**Eileen O'Connor Catholic School**

**CATHOLIC SCHOOLS Broken Bay**

**RP INFRASTRUCTURE**

**01 South-West Perspective - Aerial**  
 not to scale

**Note:**  
 All landscaping shown is indicative only and does not represent final planting selections. Please refer to the landscape drawings for planting schedules and quantities



**02 Key Plan**  
 1:1500

**Eileen O'Connor Catholic School**

Catholic Schools Broken Bay (CSBB)  
 84 Gavenlock Road,  
 Mardi, NSW 2259

Drawn; RW  
 Checked; DM  
 Plot date; 1/7/2025

Scale; 1:1500 as noted @ A1

Project No;  
**2637.20**

Drawing No; **A0502**      Revision#; **B**

South-West Perspective