



DATE
22 August 2024

REFERENCE
SSD-67105475

Department of Planning, Housing and
Infrastructure
4 Parramatta Square
12 Darcy Street
Parramatta NSW 2150
E: cameron.ashe@dpie.nsw.gov.au

DATE
22 August 2024

SUBJECT
Revised Project Description for Romani Solar Farm

REFERENCE
SSD-67105475

Dear Cameron Ashe

Subject: SSD-67105475 Romani Solar Farm – Amendment to Project Description

Environmental Resources Management Australia Pty Ltd (ERM) is writing on behalf of Samsung C&T Renewable Energy Australia Pty Ltd (SREA) (the Proponent) to advise the Department of changes to the project description for the Romani Solar Farm SSD-67105475 (the Project).

The Secretary’s Environmental Assessment Requirements (SEARs) for the Project were issued on 1 March 2024. The Project, as described in the Scoping Report includes the construction, operation and decommissioning of a solar photovoltaic energy generating facility with a capacity of 250 MW, and associated infrastructure including transmission connection works and battery energy storage system (BESS) with storage capacity of 150 MW / 300 MWh (the Hybrid Project).

The revised Project will include a second BESS with storage capacity of 200 MW / 800 MWh and will be connected to the existing X5 transmission line (the X5 BESS). The Hybrid Project and the X5 BESS will be the subject of a single Environmental Impact Statement. Construction of the Project will be staged such that the Hybrid Project and the X5 BESS can be constructed separately, concurrently and/or independently depending on market demand.

This letter has been prepared to advise the Department of the revised project description and we request the Department’s consideration of whether the current Project SEARs require updating or remain sufficient in their current form.

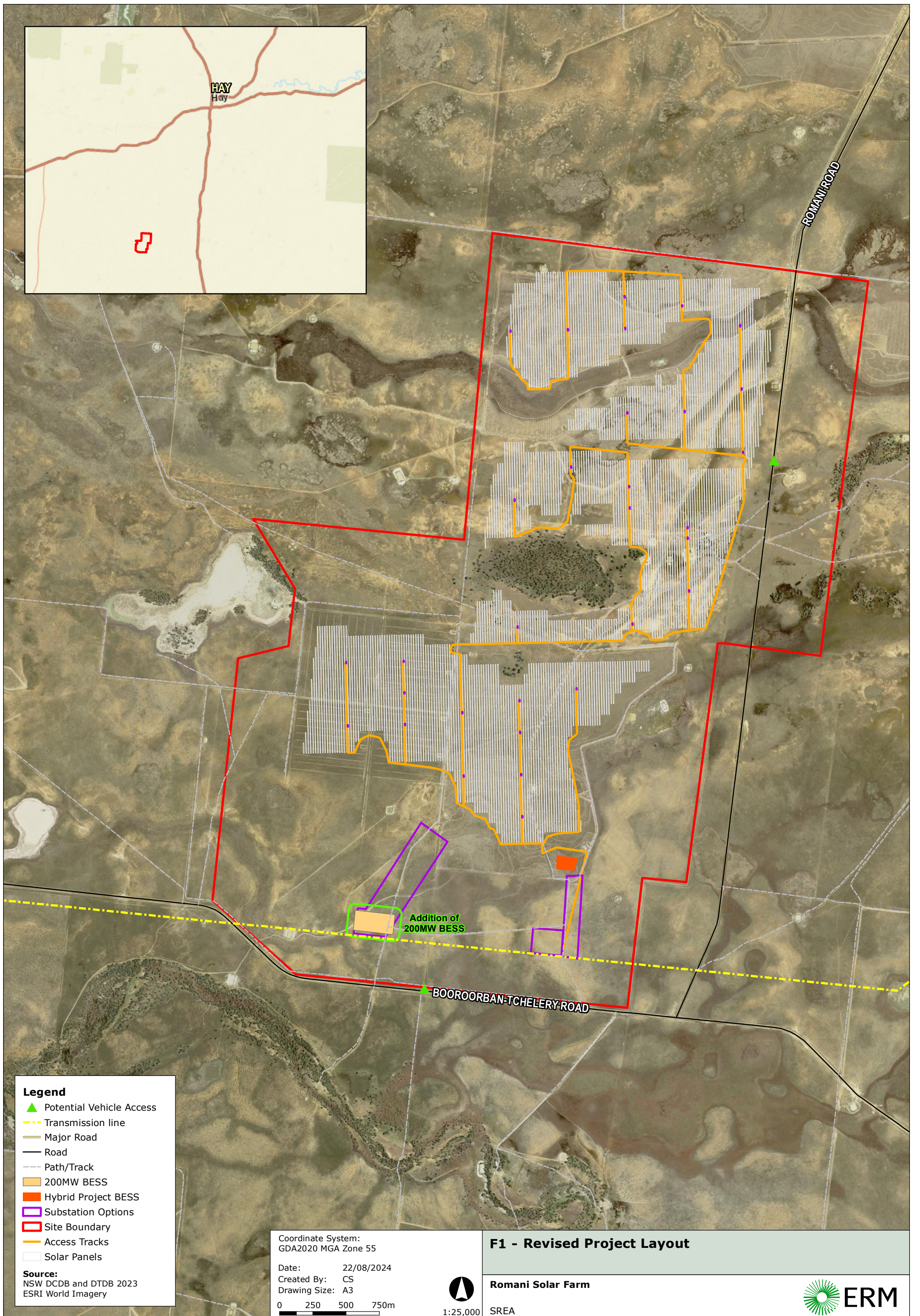
REVISED PROJECT DESCRIPTION

The Project description, as revised, is detailed in **Table 1** below. The updated indicative project layout showing the Hybrid Project and X5 BESS is shown in

Figure 1. Table 2 below compares the Project Description in the Scoping Report to the revised Project Description.

TABLE 1 PROJECT COMPONENTS

Project Component	Description
Project Area	<ul style="list-style-type: none"> • 1,810ha
Hybrid Project	
Solar Farm	<ul style="list-style-type: none"> • Maximum installed capacity of 250 MW • Covering 870 ha of solar panels
BESS	<ul style="list-style-type: none"> • Storage capacity of 150 MW / 300 MWh
Electrical Reticulation Network	<ul style="list-style-type: none"> • Connection to the Project EnergyConnect or X5 transmission line
X5 BESS	
BESS	<ul style="list-style-type: none"> • Storage capacity of 200 MW / 800 MWh • Connection to X5 transmission line
Ancillary development	
Associated Infrastructure	<ul style="list-style-type: none"> • Underground electrical layout connecting panels • Internal access tracks to connect panels to associated infrastructure • Operations and maintenance facility • Substations • Additional switchyard and transformer
Construction and Temporary Facilities	<ul style="list-style-type: none"> • Temporary construction facilities including site office and car parking • Fencing and landscaping works • Delivery of project components • Installing, maintenance and environmental management • Internal access roads • Earthworks • Installation of overhead and underground cabling • Access to Project site through Boooroban-Tchelery Road.
Subdivision	
Subdivision	<ul style="list-style-type: none"> • Subdivision to create separate lots for the Hybrid Project and X5 BESS.



Legend

- ▲ Potential Vehicle Access
- - - Transmission line
- Major Road
- Road
- - - Path/Track
- 200MW BESS
- Hybrid Project BESS
- Substation Options
- Site Boundary
- Access Tracks
- Solar Panels

Source:
 NSW DCDB and DTDB 2023
 ESRI World Imagery

Coordinate System:
 GDA2020 MGA Zone 55

Date: 22/08/2024
 Created By: CS
 Drawing Size: A3

0 250 500 750m



1:25,000

F1 - Revised Project Layout

Romani Solar Farm

SREA



TABLE 2 REVISED PROJECT DESCRIPTION

Project Elements		Previous Description	Revised Description
Project Area		<ul style="list-style-type: none"> 1,810ha 	<ul style="list-style-type: none"> 1,810ha
Hybrid Project	Solar Farm	<ul style="list-style-type: none"> Maximum installed capacity of 250 MW ~870ha for solar array 	<ul style="list-style-type: none"> No change
	BESS	<ul style="list-style-type: none"> Storage capacity of 150 MW / 300 MWh 	<ul style="list-style-type: none"> No Change
	Transmission connection	<ul style="list-style-type: none"> Proposed to connect to the existing X5 transmission line OR Project Energy Connect. 	<ul style="list-style-type: none"> Connect to Project EnergyConnect
X5 BESS	BESS	<ul style="list-style-type: none"> Not previously included in Project Description 	<ul style="list-style-type: none"> BESS with a storage capacity 200 MW / 800 MWh
	Transmission connection	<ul style="list-style-type: none"> Not previously included in Project Description 	<ul style="list-style-type: none"> Connect to the existing X5 transmission line

JUSTIFICATION

Since the preparation of the Scoping Report, SREA has optimized the design to avoid environmental sensitive areas to the north of the project area, including Aboriginal heritage sites and native vegetation. All EIS technical studies are considering the revised Project.

The revised Project is located within the South West Renewable Energy Zone (REZ), which will result in an overall increase to NSW's energy capacity. Additionally, with the provision of an additional BESS, the project will provide energy storage and dispatch capacity to facilitate and provide electricity demand management.

AVOIDANCE OF ADDITIONAL IMPACTS

The X5 BESS and associated infrastructure will generally be located within the development footprint presented in the Scoping Report. The Project layout and design will be refined further during the EIS preparation in response to the key assessment issues identified in the SEARs and the technical assessments currently being prepared.

Table 3 summarises the key issues requiring assessment in the EIS for the revised Project.

TABLE 3 KEY ISSUES IDENTIFIED WITH REVISED PROJECT DESCRIPTION

Key Issue	Revised Project Description
Biodiversity	<ul style="list-style-type: none"> The SEARs require a Biodiversity Development Assessment Report (BDAR) to be prepared for the EIS. The BDAR will assess the impacts of the Hybrid Project and X5 BESS. No change required to SEARs.
Heritage	<ul style="list-style-type: none"> The SEARs require an Aboriginal Cultural Heritage Assessment Report (ACHAR) to be prepared for the EIS. The ACHAR will assess the impacts of the Hybrid Project and X5 BESS. No change required to SEARs.
Land	<ul style="list-style-type: none"> The SEARs require an assessment of impacts on agricultural land. The EIS will assess the impacts of the Hybrid Project and X5 BESS. No change required to SEARs.
Landscape and Visual	<ul style="list-style-type: none"> The SEARs require a Landscape and Visual Assessment (LVIA) to be prepared for the Project. The LVIA will assess the impacts of the Hybrid Project and X5 BESS. No change required to SEARs.
Glint and Glare	<ul style="list-style-type: none"> The SEARs require a glint and glare assessment for the solar farm only. No change required to SEARs.
Noise	<ul style="list-style-type: none"> The SEARs require a noise impact assessment to be prepared, in particular, the operational noise for the BESS. The noise impact assessment will consider both the hybrid project BESS and the X5 BESS together (i.e. as a 'worse case' impact). The current SEARs are considered sufficient.
Transport	<ul style="list-style-type: none"> The SEARs require an assessment of the construction and operational transport and proposed haulage routes for heavy vehicles to site. The assessment will consider the transport impacts of both the Hybrid Project and the X5 BESS. (i.e. as a 'worse case' scenario). No change required to SEARs.
Water	<ul style="list-style-type: none"> The SEARs require an assessment of hydrology and flooding. The EIS will consider the combined development footprint of the Hybrid Project and X5 BESS (i.e. as a 'worse case' scenario). No change required to SEARs.
Hazards: <ul style="list-style-type: none"> Health Bushfire Dangerous Goods Preliminary Hazards Analysis 	<ul style="list-style-type: none"> The SEARs require a Preliminary Hazard Analysis to be undertaken for the Hybrid Project BESS. The EIS will consider the combined hazards and risks of the two BESSs. Therefore, the current SEARs are relevant.
Social Impact	<ul style="list-style-type: none"> The Social Impact Assessment will address the Hybrid Project and X5 BESS. No change required to SEARs.
Economic	<ul style="list-style-type: none"> The Economic Impact Assessment will address the Hybrid Project and X5 BESS. No change required to SEARs.
Waste	<ul style="list-style-type: none"> The waste management assessment will address the Hybrid Project and X5 BESS. No change required to SEARs.



DATE
22 August 2024

REFERENCE
SSD-67105475

Should you require any further information, please contact the undersigned by email at simon.bennett@erm.com.

Kind regards

A handwritten signature in black ink that reads "Simon Bennett".

Simon Bennett

Principal Consultant

A handwritten signature in black ink that reads "Lucy Baker".

Lucy Baker

Partner