

## Involved Land Parcels with Turbines

<i>Turbine ID</i>	<i>Lot/DP</i>
1	260/753602
2	235/753602
3	235/753602
4	235/753602
5	260/753602
6	1/593527
7	1/593527
8	1/593527
9	234/753602
10	200/753602
11	201/753626
12	181/753626
13	180/753626
14	183/753626
15	212/753602
16	260/753602
17	260/753602
18	260/753602
19	260/753602
20	210/753602
21	291/753602
22	291/753602
23	291/753602
24	291/753602
25	285/753602
26	291/753602
27	291/753602
28	291/753602
29	86/753602
30	285/753602
31	285/753602
32	285/753602
33	285/753602
34	284/753602
35	284/753602
36	284/753602
37	2/717646

<i>Turbine ID</i>	<i>Lot/DP</i>
38	2/717646
39	284/753602
40	284/753602
41	284/753602
42	284/753602
43	284/753602
44	284/753602
45	284/753602
46	284/753602
47	285/753602
48	285/753602
49	285/753602
50	285/753602
51	285/753602
52	293/721898
53	293/721898
54	293/721898
55	293/721898
56	2/717646
57	2/717646
58	293/721898
59	2/717646
60	293/721898
61	293/721898
62	293/721898
63	293/721898
64	2/717646
65	2/717646
66	2/717646
67	2/717646
68	1/717646
69	293/721898
70	Y/382611
71	Y/382611
72	Y/382611
73	307/753595
74	314/753595

<i>Turbine ID</i>	<i>Lot/DP</i>
75	344/753595
76	344/753595
77	344/753595
78	344/753595
79	344/753595
80	344/753595
81	138/753602
82	138/753602
83	109/753595
84	325/753595
85	325/753595
86	203/753626
87	203/753626
88	203/753626
89	238/753595
90	111/753595
91	112/665719
92	109/753595
93	110/753595
94	136/753595
95	296/753595
96	296/753595
97	210/753595
98	238/753595
99	112/753595
100	2/849324
101	2/849324
102	165/753626
103	34/1048395
104	172/1133448
105	34/1048395
106	172/1133448
110	4/1108872
111	4/1108872
112	4/1108872
114	4/1108872
115	129/753626

<i>Turbine ID</i>	<i>Lot/DP</i>
116	4/1108872
117	193/753626
118	193/753626
119	4/1108872
120	193/753626
121	193/753626
122	4/457026
123	165/753626
124	165/753626
125	207/753626
126	101/881434

<i>Turbine ID</i>	<i>Lot/DP</i>
127	101/881434
128	101/881434
129	101/881434
130	293/721898
131	212/878465
132	210/878465
133	210/878465
134	210/878465
135	292/753596
136	212/878465
137	186/753596

<i>Turbine ID</i>	<i>Lot/DP</i>
138	186/753596
139	207/753596
140	186/753596
141	186/753596
142	206/753596
143	299/753596
144	201/753596
145	205/753596
146	205/753596
147	205/753596
148	205/753596

# Involved Land Parcels & Landowner Parcels Containing Wind Farm Infrastructure

Landowner	Lot/DP
1	101/881434
2	1/659797
	293/721898
	Y/382611
3	284/753602
4	1/717646
5	2/717646
6	285/753602
7	260/753602
	268/753602
8	291/753602
9	210/753602
10	1/593527
	135/753602
	137/753602
	138/753602
	194/753626
	197/753602
	2/593527
	200/753602
	201/753626
	211/753602
	212/753602
	213/753602
	230/753602
	234/753602
	235/753602
	31/753602
	41/753602
	42/753602
	43/753602
	61/753595
86/753602	
87/753602	
88/753602	
89/753602	
90/753602	
91/753602	
92/753602	
11	344/753595
12	307/753595

Landowner	Lot/DP
	314/753595
13	1/116565
13	1/201889
	1/455031
	101/753626
	106/753626
	107/753626
	110/753626
	115/753595
	116/753595
	117/753595
	119/753626
	121/753595
	122/753595
	123/753595
	124/753595
	125/753595
	126/753595
	133/753626
	134/753626
	136/753626
	137/753626
138/753626	
146/753626	
147/753626	
148/753626	
155/753626	
16/753595	
160/753626	
180/753626	
181/753626	
182/753626	
183/753626	
184/753595	
184/753626	
185/753595	
186/753626	
197/753626	
198/753626	
2/1102090	
2/116565	

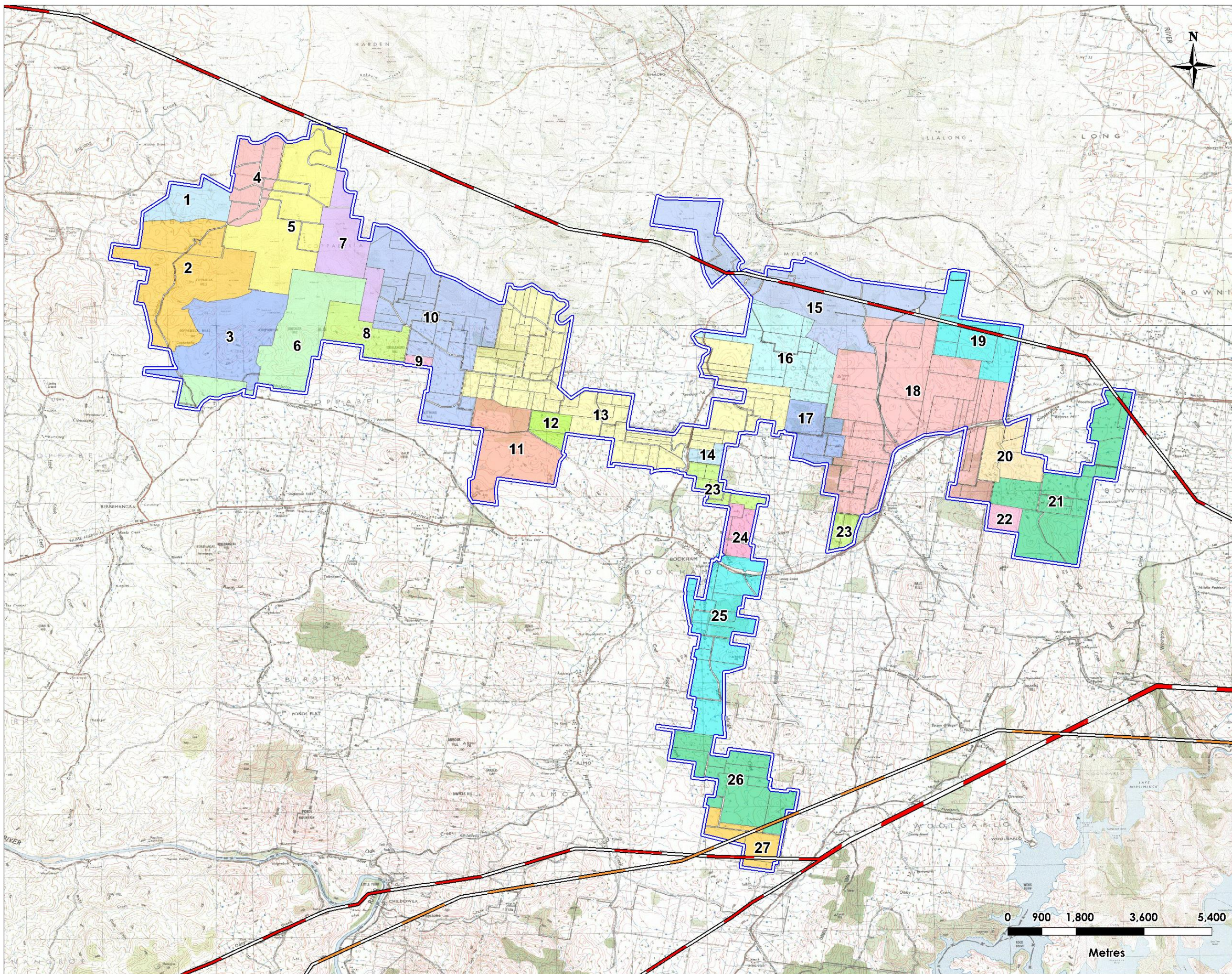
Landowner	Lot/DP
13	2/201889
	2/455031
	202/753626
	208/753595
	211/753595
	212/753595
	222/753626
	3/455031
	306/753595
	332/753595
	49/753595
	50/753595
	51/753626
	55/753595
	57/753595
	58/753595
	58/753626
59/753595	
60/753595	
76/753626	
77/753626	
78/753626	
84/753626	
85/753626	
91/753626	
14	326/753595
15	3/1108872
	4/1108872
16	129/753626
	175/753626
	196/753626
	204/753626
	224/753626
	3/457026
	4/457026
	5/457026
	6/457026
	7/457026
8/457026	
	C/408402
	D/408402

Landowner	Lot/DP
17	108/753595
	109/753595
	203/753626
	209/753626
	325/753595
	341/753595
18	105/753633
	110/753595
	111/753595
	111/753626
	112/665719
	112/753595
	113/753595
	114/753595
	122/753626
	136/753595
	139/753595
	159/1133708
	165/753626
	17/753633
	171/1133448
	172/1133448
	193/753626
	2/131969
	200/878465
	204/878465
	207/753626
	207/878465
	208/753626
	209/878465
	210/753595
	210/753626
214/878465	
238/753595	
31/1048395	

Landowner	Lot/DP
	32/1048395
	33/1048395
	34/1048395
	99/753595
19	177/753626
	178/753626
	2/849324
20	B/415303
	210/878465
	212/878465
21	291/753596
	292/753596
	177/753596
	186/753596
	200/753596
	201/753596
	205/753596
	206/753596
	23/251362
	230/753596
	24/251362
	273/753596
	278/753596
	299/753596
22	207/753596
23	1/1088583
	111/876302
	171/753595
	233/753595
	296/753595
	337/753595
	42/753595
43/753595	
53/753595	
24	167/753595

Landowner	Lot/DP
	168/753595
	169/753595
25	100/876302
	101/876302
	160/753595
	161/753595
	162/753595
	163/753595
	217/753595
	218/753595
	3/1128483
	309/753595
	310/753595
	342/753595
	4/228185
5/871925	
60/1041962	
61/1041962	
26	101/753629
	209/753629
	210/753629
	22/753629
	23/753629
	31/753629
	53/753629
	54/753629
55/753629	
27	56/753629
	57/753629
	32/753629
	33/753629
	78/753629
79/753629	
A/417412	

Note: There are 227 separate land parcels owned by 27 involved project landowners



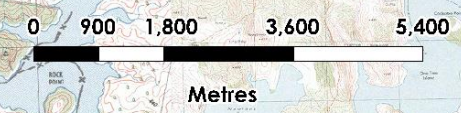
LEGEND

- PPR site perimeter
- Existing 132 kV transmission line
- Existing 330 kV transmission line
  
- Landowner Identifiers**
- Landowner 1
- Landowner 2
- Landowner 3
- Landowner 4
- Landowner 5
- Landowner 6
- Landowner 7
- Landowner 8
- Landowner 9
- Landowner 10
- Landowner 11
- Landowner 12
- Landowner 13
- Landowner 14
- Landowner 15
- Landowner 16
- Landowner 17
- Landowner 18
- Landowner 19
- Landowner 20
- Landowner 21
- Landowner 22
- Landowner 23
- Landowner 24
- Landowner 25
- Landowner 26
- Landowner 27

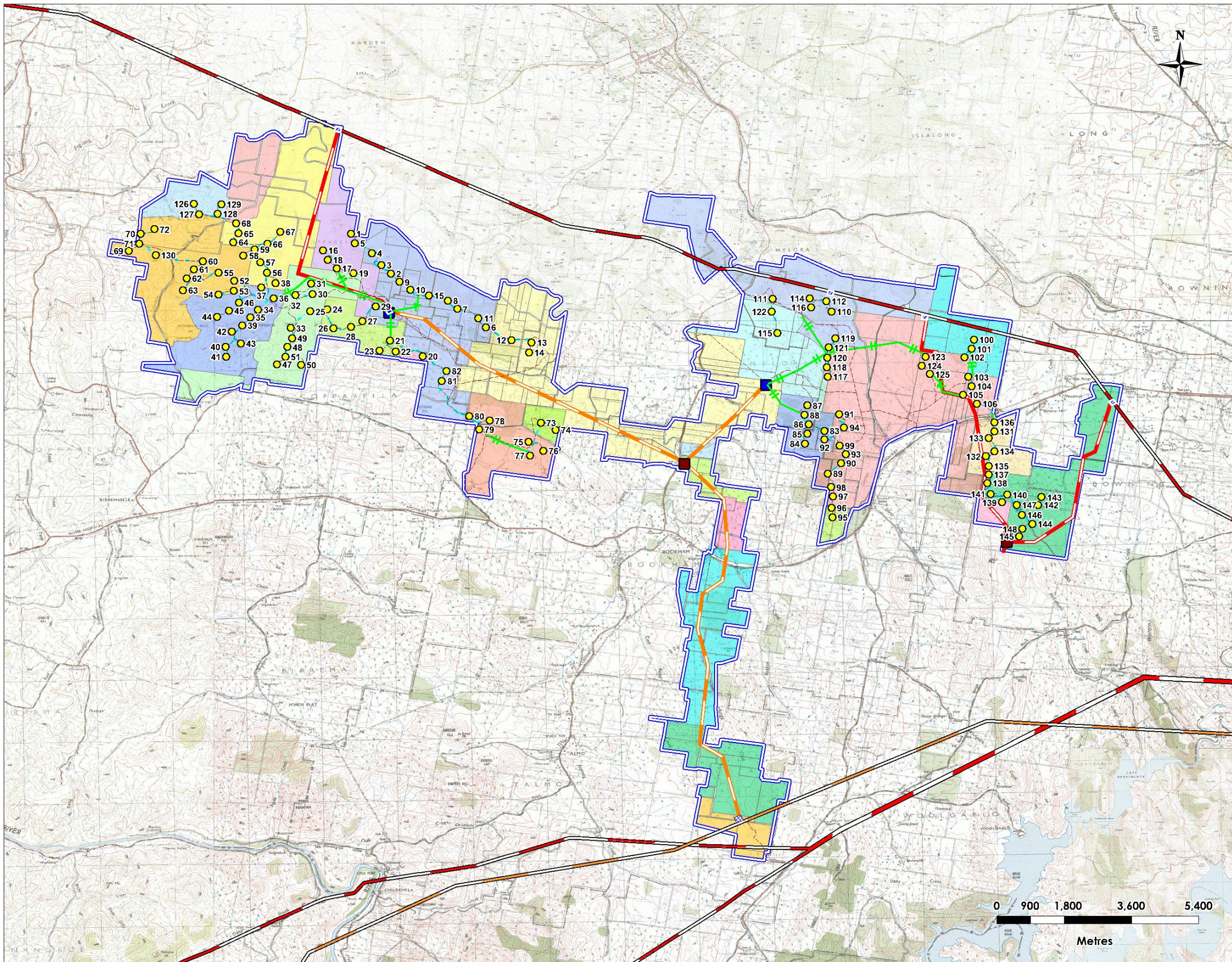
**EPURON**

PROJECT  
Yass Valley Wind Farm

TITLE  
Individual Property Holdings



SCALE	DATE	DRAWN
1:90,000 at A3	08/10/13	MK



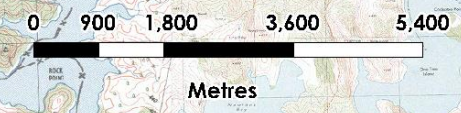
LEGEND

- PPR site perimeter
- Existing 132 kV transmission line
- Existing 330 kV transmission line
- Proposed wind turbine
- Proposed access track
- Proposed overhead powerline
- Alternative overhead powerline
- Proposed underground electrical reticulation
- Proposed overhead electrical reticulation
- Proposed substation
- Alternative substation
- Proposed switchyard

**EPURON**

PROJECT  
Yass Valley Wind Farm

TITLE  
Individual Property Holdings



SCALE	DATE	DRAWN
1:90,000 at A3	08/10/13	MK

<b>Landowner</b>	<b>Tag</b>	<b>Wind Farm Ancillary Items</b>
1	101/881434	33kV underground cable and access track
2	293/721898	33kV underground cable and access track
	Y/382611	33kV underground cable and access track
3	284/753602	33kV underground cable and access track
4	1/717646	33kV underground cable and access track
5	2/717646	132kV alternate line, 33kV underground cable, access track and switchyard
6	285/753602	132 kV alternative Line, 33kV underground cable and access track
7	260/753602	33kV underground cable and access track
	268/753602	132 kV alternative Line, 33kV underground cable and access track
8	291/753602	33kV underground cable and access track
9	210/753602	33kV underground cable and access track
10	1/593527	33kV underground cable and access track
	135/753602	33kV underground cable and access track
	137/753602	33kV underground cable and access track
	138/753602	33kV underground cable and access track
	194/753626	330kV overhead powerline and access track
	197/753602	33kV underground cable and access track
	200/753602	33kV underground cable and access track
	201/753626	33kV underground cable and access track
	212/753602	33kV underground cable and access track
	234/753602	33kV underground cable and access track
	235/753602	33kV underground cable and access track
	31/753602	330kV overhead powerline, 33kV underground cable and access track
	41/753602	330kV overhead powerline
	42/753602	330kV overhead powerline
	43/753602	330kV overhead powerline and access track
	86/753602	132 kV alternative Line, 33kV underground cable, access track and substation
	87/753602	330kV overhead powerline
88/753602	330kV overhead powerline	
90/753602	330kV overhead powerline and access track	
91/753602	330kV overhead powerline and access track	
11	344/753595	33kV underground cable and access track
12	307/753595	33kV underground cable and access track
12	314/753595	33kV underground cable and access track
13	101/753626	330kV overhead powerline
	106/753626	330kV overhead powerline
	115/753595	330kV overhead powerline
	116/753595	330kV overhead powerline
	117/753595	330kV overhead powerline

<b>Landowner</b>	<b>Tag</b>	<b>Wind Farm Ancillary Items</b>	
	123/753595	330kV overhead powerline and access track	
	125/753595	Access track	
	126/753595	330kV overhead powerline and access track	
	137/753626	Access track	
	155/753626	Access track	
	16/753595	330kV overhead powerline	
	160/753626	Access track	
	180/753626	33kV underground cable and access track	
	181/753626	33kV underground cable and access track	
	183/753626	33kV underground cable and access track	
	184/753595	330kV overhead powerline	
	185/753595	330kV overhead powerline	
	197/753626	330kV overhead powerline	
	198/753626	330kV overhead powerline, access track and substation	
	2/1102090	330kV overhead powerline	
	2/201889	330kV overhead powerline	
	2/455031	330kV overhead powerline	
	202/753626	330kV overhead powerline	
	208/753595	330kV overhead powerline	
	222/753626	33kV underground cable and access track	
	3/455031	330kV overhead powerline	
	306/753595	330kV overhead powerline	
	332/753595	330kV overhead powerline	
	55/753595	330kV overhead powerline and access track	
	58/753626	330kV overhead powerline	
	59/753595	330kV overhead powerline and access track	
	76/753626	Access track	
	85/753626	330kV overhead powerline	
	14	326/753595	330kV overhead powerline
	15	4/1108872	33kV underground cable, access track and switchyard
16	129/753626	33kV underground cable and access track	
	175/753626	Access track	
	196/753626	Access track	
	204/753626	Access track	
	224/753626	Access track	
	4/457026	33kV underground cable and access track	
	5/457026	Access track	
	8/457026	33kV underground cable and access track	
	D/408402	Access track	

<b>Landowner</b>	<b>Tag</b>	<b>Wind Farm Ancillary Items</b>
17	109/753595	33kV underground cable and access track
	203/753626	33kV underground cable and access track
	209/753626	33kV underground cable and access track
	325/753595	33kV underground cable and access track
18	110/753595	33kV underground cable and access track
	111/753626	33kV underground cable and access track
	112/665719	33kV underground cable and access track
	113/753595	33kV underground cable and access track
	114/753595	33kV underground cable and access track
	136/753595	33kV underground cable and access track
	159/1133708	Access track
	165/753626	33kV underground cable and access track
	171/1133448	33kV underground cable and access track
	172/1133448	33kV underground cable and access track
	193/753626	33kV underground cable and access track
	207/753626	33kV underground cable and access track
	207/878465	33kV underground cable and access track
	208/753626	Switchyard
	210/753595	33kV underground cable and access track
	210/753626	33kV underground cable and access track
214/878465	Access track	
238/753595	33kV underground cable and access track	
34/1048395	33kV underground cable and access track	
19	2/849324	33kV underground cable and access track
	B/415303	Access track
20	210/878465	33kV underground cable and access track
	212/878465	33kV underground cable and access track
	291/753596	33kV underground cable and access track
	292/753596	33kV underground cable and access track
21	186/753596	33kV underground cable and access track
	201/753596	33kV underground cable and access track
	205/753596	33kV underground cable and access track
	206/753596	33kV underground cable and access track
	299/753596	33kV underground cable and access track
22	207/753596	33kV underground cable and access track
23	1/1088583	330kV overhead powerline and substation
	171/753595	330kV overhead powerline
	296/753595	33kV underground cable and access track
	42/753595	330kV overhead powerline

<b>Landowner</b>	<b>Tag</b>	<b>Wind Farm Ancillary Items</b>
	43/753595	330kV overhead powerline
24	167/753595	330kV overhead powerline
	168/753595	330kV overhead powerline
	169/753595	330kV overhead powerline
25	160/753595	330kV overhead powerline
	161/753595	330kV overhead powerline
	162/753595	330kV overhead powerline
	163/753595	330kV overhead powerline
	3/1128483	330kV overhead powerline
	309/753595	330kV overhead powerline
	310/753595	330kV overhead powerline
	342/753595	330kV overhead powerline
	4/228185	330kV overhead powerline
26	32/753629	330kV overhead powerline and access track
	78/753629	Access track
	79/753629	Access track
	A/417412	Switchyard
27	101/753629	330kV overhead powerline
	209/753629	330kV overhead powerline
	210/753629	Access track
	31/753629	330kV overhead powerline, access track and communications tower
	54/753629	330kV overhead powerline
	57/753629	330kV overhead powerline

## Transmission Line Start, End and Change of Direction

<i>Description</i>	<i>Easting</i>	<i>Northing</i>
Coppabella start point	642,190	6,154,032
Marilba start point	652,183	6,151,546
Junction	649,953	6,149,034
330 kV switchyard	651,243	6,137,457
Change of direction	643,053	6,153,797
	644,497	6,152,296
	651,338	6,150,526
	650,987	6,147,825
	651,065	6,146,262
	650,904	6,145,171
	650,356	6,144,752
	650,221	6,143,608
	650,479	6,142,431
	650,208	6,139,900
	650,824	6,139,448