

Yass Valley *Wind Farm*

Decommissioning & Rehabilitation Plan | May 2014

EPURON

Table of Contents

| | |
|--|-----------|
| TABLE OF CONTENTS | I |
| 1 INTRODUCTION | 1 |
| 1.1 Project Description | 1 |
| 2 DECOMMISSIONING AND REHABILITATION | 3 |
| 2.1 Decommissioning Commitment | 3 |
| 2.2 Decommissioning Funding | 3 |
| 2.3 Trigger for a decommissioning fund | 3 |
| 3 STAKEHOLDER CONSULTATION | 4 |
| 3.1 Wind Farm Landowners | 4 |
| 3.2 Community | 4 |
| 4 PLANNED SCOPE OF WORKS | 5 |
| 4.1 Wind Turbines | 5 |
| 4.2 Electrical Transformers | 5 |
| 4.3 Underground Electrical Cabling and Overhead Powerlines | 5 |
| 4.4 Access Roads | 6 |
| 4.5 Foundations | 6 |
| 4.6 Hardstands and Laydown Areas | 6 |
| 4.7 Operation and Maintenance Facilities | 6 |
| 5 TRANSPORT OF DISMANTLED TURBINES | 7 |
| 5.1 Access Routes for Decommissioning | 7 |
| 5.2 Transport for Decommissioned Components | 7 |
| 6 WASTE MINIMISATION STRATEGY | 8 |
| 6.1 Tower and Nacelle | 8 |
| 6.2 Turbine Blades | 8 |
| 7 REHABILITATION MONITORING | 9 |
| 8 UPDATING THE PLAN | 10 |
| ATTACHMENT 1 – REFURBISHED WIND TURBINE FOR SALE | 11 |



1 Introduction

Development of the Yass Valley Wind Farm involves the construction, operation and decommissioning of a 144 turbine wind farm and its associated infrastructure. This plan sets out the decommissioning and rehabilitation works required at the end of the wind farms 30 year operating life and land Lease term.

In December 2011 the draft NSW Planning Guidelines: Wind Farms (Guidelines) were released. Sections 1.3(f) of the Guidelines address the following decommissioning and rehabilitation requirements for wind farms at the end of their operational life;

- ▶ The proponent/wind farm owner rather than the “host” landowner must retain responsibility for decommissioning, and
- ▶ The proponent to include a Decommissioning and Rehabilitation Plan in their environmental assessment report.

The Proponent is committed to fulfilling the wind farm decommissioning and rehabilitation obligations specified in the Guidelines. This plan has been developed so these obligations can be satisfied for the Yass Valley Wind Farm and forms part of the project’s Preferred Project Report.

1.1 Project Description

The proposed 144 turbine Yass Valley Wind Farm is located on the border of the NSW Southern Tablelands and the South West Slopes, about 17 km west of the rural township of Yass Valley. The closest main access road to the wind farm site is the Hume Highway which runs through the centre of the Marilba Precinct and is on the southern border of the Coppabella Precinct.

The wind farm is located across two local government areas - the Harden Shire Council and Yass Valley Council. Yass Valley Wind Farm will be located on private properties that are primarily used for sheep and cattle grazing. The development is being assessed by the NSW Department of Planning and Infrastructure as a Major Project under Part 3A of the EPA Act 1979.

The primary components of the wind farm include;

- ▶ 144 wind turbines including nacelles, towers and blades
- ▶ Foundations and civil structures
- ▶ Access roads and watercourse crossings
- ▶ Hard stands and lay down areas
- ▶ Underground cabling and overhead powerlines
- ▶ Substations, a switchyard and associated electrical equipment
- ▶ Operations and maintenance facilities
- ▶ Storage areas and car parks
- ▶ Wind monitoring masts and communications equipment

The proposed layout of the Yass Valley Wind Farm is shown in Figure 1-1 on the following page.

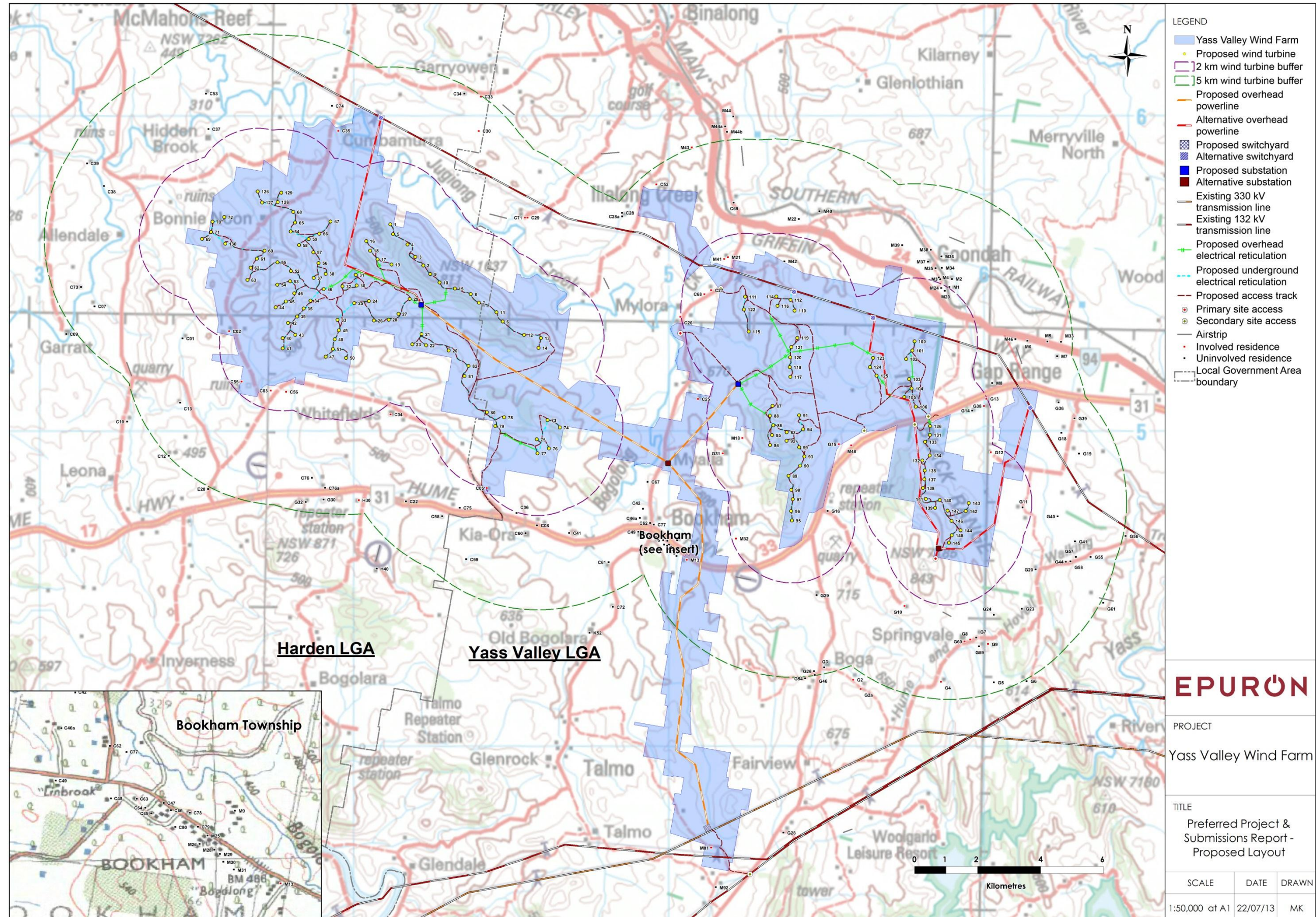


Figure 1-1 Site layout overview for the proposed Yass Valley Wind Farm

2 Decommissioning and Rehabilitation

2.1 Decommissioning Commitment

The expected commercial life of the Yass Valley Wind Farm will be up to 30 years once commissioned and placed into operational service at the end of the construction phase. At the end of the operational life the wind farm will be decommissioned and removed from service in accordance with this plan or the wind farm may be refurbished and repowered for a further 30 years. The option to refurbish and repower the wind farm is subject to a decision by the wind farm owner at the time and is influenced by future market conditions.

Consistent with the Guidelines the Proponent is committed to its obligation to decommission and rehabilitate the Yass Valley Wind Farm site at the end of its operational life and Lease term. The lease agreements between the Proponent and the wind farm landowners set out the terms requiring the wind farm owner to undertake decommissioning and rehabilitation the site.

2.2 Decommissioning Funding

Decommissioning the wind farm at the end of its commercial life is the Proponents obligation and expense. It would involve reinstating similar access road arrangements to the construction phase, and would require access for large cranes and transport vehicles to dismantle and remove the turbines and other equipment. All underground foundations, cable trenches and other infrastructure would remain in situ and all above ground infrastructure would be removed unless requested to remain by the landowner. The decommissioning period is likely to be significantly shorter at around 12 months and with significantly fewer truck movements than the construction phase.

It should be noted, based on current market data, that the sale value of recovered turbine materials and other equipment is predicted to exceed the costs of their dismantling and site rehabilitation. In today's terms it is estimated the decommissioning works will cost in the order of \$55-60 million while the sale value of recovered equipment and materials is around \$60-65 million. Should this positive cost / sale balance tip negatively in the future, the Proponent has agreed to ensure an appropriate financial instrument is put in place to ensure the works can be funded. A bank account is the financial instrument to be used.

The decommission works cost estimate has been based on the advice of a turbine supplier with experience in Australia and an industry wide accepted value for the construction of wind farms and extrapolated across the site. It is estimated that the cost of building a wind farm is approximately \$2 million per MW installed and this includes the cost of the turbine unit, transformers, shipping from the manufacturer to the site, erection and commissioning as well as the associated civil and electrical works to connect to the electricity grid. As a percentage of the \$2 million per MW estimate, the cost of transport from port to site and erection amount to 8% of the total. As the same processes used in construction will be used in decommission (i.e. use of cranes, electrical decommissioning and supervision), it has been assumed that this method will provide a good estimation of the costs. This leads to a total estimated decommissioning cost in the region of \$55-60 million or approximately \$380,000 per turbine. This estimate is on par with other wind farm developments that have recently been approved in New South Wales.

Current sale prices of refurbished wind turbines vary significantly due to improvement in technology in recent years and name plate capacity increasing. A list of currently available refurbished wind turbines can be seen in Attachment 1. The sale prices range between 105,000€ - 295,000€ for turbines with a much lower rated output than those proposed for the Yass Valley Wind Farm.

2.3 Trigger for a decommissioning fund

The wind farm owner will undertake an independent quantitative survey to guide the estimate of the decommissioning cost at least 5 years prior to the end of the wind farm's life, or 18 years from commissioning, whichever is sooner. The Landowners will be advised of the amount determined.

In each of the 5 years following the estimate of decommissioning the Wind Farm owner will deposit 20% of the estimated decommissioning cost into an account set aside solely for the purpose of complying with planning conditions for decommissioning. The Wind Farm Company shall maintain the account until the site is decommissioned and the lease terminated or the site is repowered and the lease is renewed or extended.

3 Stakeholder Consultation

3.1 Wind Farm Landowners

As part of the overall wind farm consultation process the Proponent discusses decommissioning and rehabilitation requirements with the host wind farm landowners during agreement negotiations. The requirements of the parties in this regard are documented in the Lease Agreement but fundamentally place the obligation for decommissioning on the Proponent.

While the Proponent has committed to decommissioning, the consultation process indicates that most wind farm landowners may prefer some components of the wind farm infrastructure to remain on their land after the decommissioning process. The retention of these improvements is seen by the landowners to enhance their ongoing farming practises and potentially includes infrastructure such as;

- ▶ access roads and watercourse crossings;
- ▶ fencing, sheds and storage facilities; and
- ▶ planted vegetation.

The Proponent recognises that the wind farm landowners views may change over time regarding decommissioning requirements or if land ownership changes. Accordingly, while noting the current desire of the wind farm landowners to retain some components of the wind farm after decommissioning, the Proponent accepts the responsibility for decommissioning all components of the wind farm in line with this plan. Consultation with the wind farm landowners would be revisited prior to the decommissioning phase, to make sure their requirements at that time are incorporated into the plan.

3.2 Community

Consultation with the community regarding decommissioning will be undertaken well in advance of the commencement of the wind farm decommissioning works.

The key objectives of the consultative process will be to:

- ▶ Ensure the local community and stakeholders are appropriately informed about the planned decommissioning works in advance.
- ▶ Seek feedback from the community and local authorities regarding any concerns regarding the decommissioning works.
- ▶ Consider and incorporate any feedback from the community and local authorities, where possible, into the decommissioning plan.

Key issues to be addressed during the community consultation will include:

- ▶ Program and staging of the planned decommissioning works necessary to minimise impacts on farming activities and the community.
- ▶ Management of traffic and transport matters on the wind farm access roads.
- ▶ Maximise local employment opportunities to ensure local participation in the works where possible.
- ▶ Coordination of logistics to ensure adequate availability of contractor supplies, accommodation and local services.

The Proponent has established a Community Consultation Committee (CCC) for the project which will remain active until completion of the decommissioning phase. The CCC's role will be to provide information to the community and to inform the Proponent of their feedback. The CCC provides an alternate forum for consultation between stakeholders.

4 Planned Scope of Works

The Proponent will engage appropriate contractors and specialists to undertake the wind farm decommissioning and rehabilitation works once the wind farm has reached the end of its commercial life. Manufacturer equipment manuals and procedures, where available, will be utilised to guide decommissioning and dismantling activity. The decommissioning works are expected to be completed in around 12 months from commencement.

The current plan is to sell recovered equipment and material wherever possible to fund the works. As such it is expected the decommissioning process will be carried out with due care and accuracy to ensure the resale value of all recovered equipment and materials are preserved.

4.1 Wind Turbines

At the end of their commercial life turbines will be shut down and removed from active service and physically disconnected from the electrical infrastructure in order to make them safe before the dismantling process commences. Once safe and ready for dismantling all liquids will be drained and contained (oils, grease, lubricants and coolants, etc.) and any other consumable or disposable items will be removed where necessary. Captured wastes and materials will be recycled or reused wherever practicable to do so, and if not practicable, disposed of at an appropriate waste facility. Any handling, storage and disposal of waste material will be carried out in accordance with the project's Waste Management Plan.

Dismantling of the turbine blades, nacelle and tower will be generally carried out in the reverse sequence to their original assembly during construction. Dismantling will involve disassembly of the various components, which will be lowered by crane and transported to a storage / laydown area before removal from site for sale to market.

It is expected that all waste metallic components would be recovered and sold or recycled. Any other non-metallic waste materials such as plastics, composites or civil material that could not be feasibly reused or recycled would be recovered and crushed or compacted and disposed of in an appropriate waste facility.

4.2 Electrical Transformers

Selection of the preferred wind turbine model will ultimately reveal the type, size and location of the turbine electrical transformers. Some turbines require the transformers to be mounted inside the turbine tower while others are mounted externally on a concrete foundation and weatherproof housing. To decommission the transformers they must be shut down, removed from service and made safe. To dismantle the transformers they must first be allowed to cool before removing and containing all liquids (oil) prior to transporting off-site for resale. Transformer foundations will remain in situ below the ground while all exposed cabling, conduit and housings are removed. The concrete foundations would be covered with a layer of compatible sub-grade material and would be graded to preserve the slope of the surrounding area. The ground will be dressed with compatible topsoil, and planted with appropriate grasses or foliage to reintegrate it with the surrounding environment.

Some electrical transformers, substations and grid connection equipment on the wind farm site may be owned and operated by the network operator, currently TransGrid. The responsibility for decommissioning this equipment remains with the network owner / operator and their processes and procedures would apply to their equipment.

4.3 Underground Electrical Cabling and Overhead Powerlines

Underground electrical cables may be installed at varying depths, depending on the rating and type of cable conductor used, but will likely be installed at depths of approximately 1m. Underground electrical cabling will not be removed during decommissioning and will be deactivated and left in situ. The cables contain no materials considered harmful to the environment and the process of digging them up and removing them is often considered to have a far greater impact on the environment than leaving them in situ. Much of the underground cabling will be installed under the wind farm access roads and leaving the cabling in place is unlikely to have any impact on future farming practises, particularly if the access roads remain in place after decommissioning. Should underground electrical cabling need to be removed, it will be removed in such a way as to minimise impact on the surrounding area as much as possible. Any disturbed areas would be backfilled with compatible material and would be graded to preserve the slope of the surrounding area. The ground will be dressed with compatible topsoil and planted with foliage to reintegrate it with the surrounding environment.

All overhead electrical cabling and powerlines will be dismantled, removed and materials reused or sold where possible. The powerline poles will be removed and the holes filled in with compatible sub-grade material and revegetated. In locations where potential environmental damage from complete extraction of the powerline pole may outweigh the benefits, the pole will be cut off at ground level.

4.4 Access Roads

Wind farm landowners are likely to seek the retention of access roads at the time of decommissioning as they provide a benefit to their ongoing farming practises. In the event decommissioning of the access roads is required, the gravel topping and sub layers will be removed and transported to an appropriate disposal location. Disposal may include reuse as land fill on site if required, or at an offsite location. All associated access road infrastructure including drainage structures, culverts and crossings will be removed and reused where possible, or disposed of at an appropriate offsite location. Cleared areas will be backfilled with clean, compatible material and would be graded to preserve the slope of the surrounding area. The ground will be remediated as appropriate and dressed with compatible topsoil and planted with grasses or foliage to reintegrate it with the surrounding environment.

4.5 Foundations

The wind farm may comprise a mix of both gravity type and rock anchor type foundations for installation of the wind turbines. Determining which type of foundation will be used is finalised during the pre-construction phase depending on the specific geology existing at each wind turbine site. A gravity foundation is essentially a large block of reinforced concrete installed 2-3m below the surface while a rock anchor foundation drills deep into the ground and fixes steel cables into the rock about 20-25m underground. Regardless of the underground foundation used it will not be removed during decommissioning as the disturbance is not necessary and the underground foundation is considered to cause no harm by remaining in situ. All protruding electrical cabling, conduit and other structures are removed and the foundations are covered with a layer of compatible material and graded to preserve the slope of the surrounding area. The ground will be dressed with compatible topsoil and with grasses or foliage to reintegrate it with the surrounding environment.

4.6 Hardstands and Laydown Areas

Hardstand areas are generally constructed in a similar manner to access roads but may have an increased level of compactness for crane lifts. Laydown and storage areas are also constructed in a similar manner to access roads and are often large flat areas of well drained land set aside for storage purposes. Remediation of these areas would be the same as for access roads but it is likely some areas may also be retained by the wind farm landowners for future farming use.

4.7 Operation and Maintenance Facilities

During the operations of a wind farm a number of buildings and structures are required to accommodate offices, amenities, storage, control room and general maintenance facilities including car parks. This can be achieved by refurbishing existing structures or constructing purpose built facilities. It is expected these buildings and structures will be retained on site by the landowner once wind farm decommissioning is completed. If the buildings are to be demolished and removed, this would be undertaken in accordance with standard demolition practices for buildings of this nature.

6 Waste Minimisation Strategy

While it is anticipated that the wind turbines will still have significant resale value at the end of their life, there remains a possibility that some components may need to be recycled or disposed of. In these circumstances the Environmental Protection Agency Guidelines Assessment, Classification and Management of Liquid and Non-liquid Wastes (or equivalent guidelines of the time) will be used to classify the waste and ensure suitable resource recovery strategies are employed.

6.1 Tower and Nacelle

Modern wind turbine towers and nacelles primarily consist of easily recyclable and desirable metallic and alloy materials such as aluminium, copper and steel, in addition to fibreglass and plastics. If resale is not an option, the metallic and alloy materials would be sold as scrap metal. A number of scrap metal merchants are located in Canberra, 80km to the south east of the site.

Plastics or other materials that could not be reused or recycled would be disposed of in a permitted and safe manner in an authorised landfill site.

6.2 Turbine Blades

Wind turbine blades are made up of a range of composite materials designed to provide strength yet maintain a low overall weight to minimise rotational inertia. These materials include carbon fibre, plastic polymers, fibreglass and epoxy resins.

Currently, there are two main techniques used in the recycling or disposal of turbine blades. Recycling turbine blades is a difficult procedure due to the complex nature of the composite materials and epoxies used in the blade. The process consists of a range of physical (shredding, crushing) and chemical reactions (pyrolysis, oxidation) to separate the carbon fibres from epoxy resins.

If recycling of the turbine blade is unfeasible at the time of decommissioning, the most likely means of disposal would be to crush and compact the blades of in a safe manner and disposed in an authorised landfill.

7 Rehabilitation Monitoring

The planned rehabilitation activities are designed to reintegrate any disturbed area with the surrounding land and existing vegetation to a condition similar to that existing prior to construction. It is possible initial rehabilitation works may be ineffective in some areas due to erosion, farming intrusion or topographical effects impacting the rehabilitated area. Similarly, it is possible initial re-seeding, re-grassing or vegetative replanting activities may be unsuccessful due to inappropriate coverage or weather effects. To ensure the rehabilitation program is successful in the longer term, periodical site monitoring will be undertaken for up to 2 years following decommissioning. It is likely the monitoring will be undertaken by the host landowners in the first instance and any remediation works carried out by the Proponent as required. Rehabilitation remediation works may include;

- ▶ Application of additional water to newly planted vegetation
- ▶ Remediation of poor drainage areas where runoff is insufficient or to prevent erosion
- ▶ Aeration or fertilisation of topsoil to enhance vegetation growth
- ▶ Replanting of any dead vegetation
- ▶ Applying additional backfill material or topsoil
- ▶ Fencing to keep farming practises and livestock away from rehabilitated areas until established

8 Updating the Plan

Consistent with the Guidelines, the Proponent will update this plan during the first year of commercial operations and every 5 years thereafter. In updating the plan during the first year of operations the wind farm owner will take into account as-built wind farm infrastructure, any changed landowner ownership and any regulatory or approval conditions relevant to the future decommissioning process. A copy of the updated plan will be made available for public viewing.

Attachment 1 – Refurbished Wind Turbine for Sale



REPOWERING SOLUTIONS

Available second hand wind energy converters due to repowering programms

15/03/2013

| List of currently available Second hand WIND TURBINE | | Repowering Solutions | |
|---|-----------------------|--|--|
| Issued/ up-dated: February 2013 | | | |
| List's ser. No. | Offer's reference no. | Title / Technical Data | Price, Scope of Deliveries (SoD) and other commercial and delivering conditions |
| | | | <div style="display: flex; justify-content: space-between;"> <div style="border: 1px solid black; padding: 2px;">If you want to have more details or a detailed offer and photos,</div> <div style="border: 1px solid black; padding: 2px;"> [RE] MANUFACTURED WTG USED WTG UNUSED WTG </div> </div> |
| Preliminary note: | | | |
| 2013/0001 | | LAGERWAY 18/80KW Manufacturer: Lagerway Power: 80kW Year of production: 2000 Unit: Several units Rotor: 18 Tower height: 30 General condition: Remanufactured Notes: We can supply this turbine limited at 60kW for Italian Market | Price: -- Scope of deliveries: a) Nacelle b) Rotor c) Tower d) New full power converter e) New panel control f) New generator Status: Remanufactured with 2 year warranty Location: Spain Delivery: Has to be negotiated Payment: Has to be negotiated Available: Immediately |
| 2013/0002 | | NORDTANK Manufacturer: NORDTANK 300 Power: 300kW Year of production: 1996 Unit: 30 Rotor: 28 Tower height: 30 General condition: Remanufactured Notes: We can supply this turbine limited at 200kW for Italian or 250kW for North Ireland markets | Price: -- Scope of deliveries: a) Nacelle b) Rotor c) Tower d) New full power converter e) New panel control f) New generator Status: Remanufactured with 2 year warranty Location: Spain Delivery: Has to be negotiated Payment: Has to be negotiated Available: Immediately |
| 2013/0003 | | VESTAS Manufacturer: VESTAS V27 Power: 225KW Year of production: 1999 Unit: 3 Rotor: 27 Tower height: 30 General condition: Remanufactured | Price: -- Scope of deliveries: a) Nacelle b) Rotor c) Tower Status: Remanufactured with 2 year warranty Location: Spain Delivery: Has to be negotiated Payment: Has to be negotiated Available: Immediately |
| 2013/0004 | | NORDEX N54 Manufacturer: NORDEX Power: 1000 Year of production: 2000 Unit: 17 Rotor: 54 Tower height: 60 General condition: Good condition | Price: 105.000,00 € Scope of deliveries: a) Nacelle b) Rotor c) Tower d) Control cabinet e) Trafo Dismantling: Not including Status: Used Location: Germany Delivery: Has to be negotiated Payment: Has to be negotiated Available: Immediately |
| 2013/0005 | | NEG MICON Manufacturer: NEG MICON Power: 1000 Year of production: 2000 Unit: 12 Rotor: 60 Tower height: 70 General condition: Good condition | Price: 150.000,00 € Scope of deliveries: a) Nacelle b) Rotor c) Tower d) Control cabinet e) Trafo |

REPOWERING SOLUTIONS

Available second hand wind energy converters due to repowering programms

15/03/2013

| List of currently available Second hand WIND TURBINE Issued/ up-dated: February 2013 | | | |
|--|-----------------------|--|---|
| List's ser. No. | Offer's reference no. | Title / Technical Data | Price, Scope of Deliveries (SoD) and other commercial and delivering conditions |
| | | | Dismantling: Not including Status: Used Location: Germany Delivery: Has to be negotiated Payment: Has to be negotiated Available: Immediately |
| | 2013/0006 | NORDEX N60 Manufacturer: NORDEX Power: 1300 Year of production: 1999 Unit: 37 Rotor: 60 Tower height: 69 General condition: Good condition | Price: 160.000,00 € Scope of deliveries: a) Nacelle b) Rotor c) Tower d) Control cabinet e) Trafo Status: Not including Location: Germany Delivery: Has to be negotiated Payment: Has to be negotiated Available: Immediately |
| | 2013/0007 | VESTAS V66 Manufacturer: VESTAS V 66 Power: 1650 Year of production: 1999-2001 Unit: 30 Rotor: 66 Tower height: 70M General condition: Good condition | Price: 295.000,00 € Scope of deliveries: a) Nacelle b) Rotor c) Tower d) Control cabinet e) Trafo Dismantling: Excluded Status: Used Location: Germany Delivery: Has to be negotiated Payment: Has to be negotiated Available: Immediately |
| | 2013/0008 | VESTAS Manufacturer: VESTAS V47 Power: 660 Year of production: 2000 Unit: 9 Rotor: 47 Tower height: 65 General condition: Good condition | Price: 157.000,00 € Scope of deliveries: a) Nacelle b) Rotor c) Tower d) Control cabinet e) Rotor Dismantling: Exclusive Status: Used Location: Germany Delivery: Has to be negotiated Payment: Has to be negotiated Available: Immediately |
| | 2013/0009 | VESTAS Manufacturer: VESTAS V52 - CLASS I Power: 850 Year of production: 2010 Unit: 4 Rotor: 52 Tower height: 65 General condition: Unused - The turbines have not been installed, we think we can buy these turbines at a significant discount. | Price: please give us your price Scope of deliveries: a) Nacelle b) Rotor c) Tower d) Control cabinet Dismantling: Including Status: Unused Location: Italy Delivery: Has to be negotiated Payment: Has to be negotiated Available: Immediately |
| | 2013/0010 | VESTAS Manufacturer: VESTAS V90 - CLASS I Power: 3000 Year of production: 2010 Unit: 6 Rotor: 90 Tower height: 80 | Price: please give us your price Scope of deliveries: a) Nacelle b) Rotor c) Tower d) Control cabinet |

REPOWERING SOLUTIONS

Available second hand wind energy converters due to repowering programms

15/03/2013

| List of currently available Second hand WIND TURBINE Issued/ up-dated: February 2013 | | | |
|--|-----------------------|---|---|
| List's ser. No. | Offer's reference no. | Title / Technical Data | Price, Scope of Deliveries (SoD) and other commercial and delivering conditions |
| | | General condition: Unused - The turbines have not been installed, we think we can buy these turbines at a significant discount. | Dismantling Status: Unused Location: Spain Delivery: Has to be negotiated Payment: Has to be negotiated Available: Immediately |
| | 2013/0011 | VESTAS Manufacturer: VESTAS V90 - CLASS III Power: 2000 Year of production: 2010 Unit: 7 Rotor: 90 Tower height: 80 General condition: Unused - The turbines have not been installed, we think we can buy these turbines at a significant discount. | Price: please give us your price Scope of deliveries: a) Nacelle b) Rotor c) Tower d) Control cabinet Dismantling Status: Unused Location: Spain Delivery: Has to be negotiated Payment: Has to be negotiated Available: Immediately |
| | 2013/0012 | VESTAS Manufacturer: VESTAS V80 - CLASS I Power: 2000 Year of production: 2010 Unit: 6 Rotor: 80 Tower height: 80 General condition: Unused - The turbines have not been installed, we think we can buy these turbines at a significant discount. | Price: please give us your price Scope of deliveries: a) Nacelle b) Rotor c) Tower d) Control cabinet Dismantling Status: Unused Location: Spain Delivery: Has to be negotiated Payment: Has to be negotiated Available: Immediately |