

Attachment 1 – Involved Land Parcels

Landowner	Lot/DP
1	45/750744
	28/511950
2	1/131752
	1/659801
	231/750763
	136/750763
	227/750763
	229/750763
	134/750763
	232/750763
	226/750763
	129/750763
	133/750763
	228/750763
	167/750763
	135/750763
	132/750763
	230/750763
	96/750763
	130/750763
	103/750763
	131/750763
2/750763	
3	51/561116
4	162/750744
	172/750744
	115/750744
	44/750744
	173/750744
	113/750744
	170/750744
	119/750744
	47/750744
	27/750744
	114/750744
	118/750744
112/1083285	
5	10/754969
	7/132085
	4/754969
	9/132085
	1/1178469
	8/754969
6/754969	

Landowner	Lot/DP
	8/132085
	15/754969
	1/754969
	12/754969
	11/754969
	13/754969
	108/750744
6	61/750744
	36/750744
	57/750744
	103/750744
	169/750744
	151/750738
	44/750738
	164/750738
	61/750738
	29/750738
	60/750744
	171/750744
	25/750744
	110/750744
	159/750738
	152/750738
	30/750738
	46/750744
	109/750744
	45/750738
43/750738	
23/750744	
60/750738	
104/750744	
2/1096238	
102/750744	
104/750738	
106/750744	
59/750738	
25/750738	
28/750738	
26/750744	
B/418915	
117/750744	
42/750738	
26/750738	
105/750744	

Landowner	Lot/DP
	14/750738
	1/1096238
7	107/661247
	1/397494
	74/750775
	73/750775
	1/798400
	137/750738
	9/42211
	8/42211
	3/131788
	20/750775
	102/186048
	11/750775
	71/750775
	2/519117
	23/750775
	21/750775
	138/750738
	24/750775
	101/750738
	19/750775
	25/750775
	1/397042
	7/42211
	1/397495
	10/42211
	72/750775
	100/750738
18/750775	
1/131761	
1/397043	
110/750775	
22/750775	
70/750775	
1/131751	
45/750775	
4/131788	
2/131788	
108/750775	
120/43547	
3/131761	
1/397493	
47/1083075	

Landowner	Lot/DP
	1/131788
	2/131761
	5/1125257
8	1/981960
9	1/879624
	11/1073728
	129/750771
	4/706362
	2/1090231
	13/1073728
	10/1073728
	3/1090231
	1/1090231
	4/1090231
10	100/750748
11	155/750738
	34/750738
	55/750738
	50/750775
	58/750738
	2/258902
	62/750738
	56/750738
	5/522746
	4/232010
	24/750738
	16/750738
	18/750738
	35/750738
	2/614827
	33/750738
	57/750738
	A/418915
	115/41493
	63/750738
27/750738	
4/258902	
12	5/522745
	49/750738
	36/750738
	38/750738
	75/750763
	35/750763
	142/750763

Landowner	Lot/DP
	115/750763
	245/750763
	80/750763
	7/223584
	121/750763
	236/750763
	120/750763
	234/750763
	140/750763
	93/750763
	123/750763
	27/511950
	12/223584
	41/750738
	3/522745
	22/750738
	34/750763
	77/750763
	127/750763
	116/750763
	138/750763
	252/750763
	114/750763
	247/750763
	50/750763
	251/750763
	51/750738
	19/750738
	51/750763
	92/750763
	117/750763
	79/750763
	137/750763
	128/750763
	233/750763
	125/750763
	122/750763
	253/750763
	33/750763
	37/750738
	14/223584
	5/258902
	11/223584
	49/750763

Landowner	Lot/DP
	144/750763
	94/750763
	235/750763
	76/750763
	246/750763
	74/750763
	118/750763
	84/750738
	106/750763
	3/258902
	18/223584
	119/750763
	100/750763
	126/750763
	105/750763
	139/750763
	17/223584
13	1/651613
	15/1073728
	2/747190
	1/706361
	2/242557
	12/1073728
14	14/1073728
	1/1102992
15	19/754968
	48/754968
16	3/540639
17	62/750769
18	2/580750
19	3/754969
	2/754969
	7/754969
20	2/502632
	2/864461
21	1/580750
22	6/522746
	44/535078
	2/531707
	32/226029
	3/223581
	42/535077
	31/226028
165/750763	

Landowner	Lot/DP
	1/223581
	148/750763
23	30/226028
	91/750775
	40/750763
	101/750763
	220/750763
	9/223584
	22/223589
	20/223589
	29/226028
	42/750763
	37/750763
	8/223584
	102/750763
	33/226029
24	52/750748
	136/750748
	53/750748
25	18/750748
	87/750738
26	1/1121270
	82/750736
27	9/754969
	1/1045523
	171/750738
	5/754969
	1/363099
	51/42212
	2/1107124
	2/1102992
	1/1107124
28	168/750738
	67/750738
	69/750738
	86/750738
	154/750738
	2/1113702
	98/750738
	173/750738
	167/750738
	66/750738
	108/750738
	157/750738

Landowner	Lot/DP
	1/363100
	53/750738
	150/750738
	46/750738
	64/750738
	68/750738
	1/1113702
	153/750738
	1/363098
	14/754969
29	21/998524
	24/754969
	45/754968
	32/750738
	85/750738
	19/754969
30	23/754969
	166/750738
	74/750738
	54/750775
	162/750738
	14/750775
	76/750738
	156/750738
	92/750738
	83/750775
	10/750775
	88/750738
	40/750738
	47/750738
	1/614827
	5/750775
	106/750738
1/1097739	
72/750738	
4/522745	
2/522745	
75/750738	
103/750738	
3/750775	
82/750775	
90/750738	
116/41493	
73/750738	

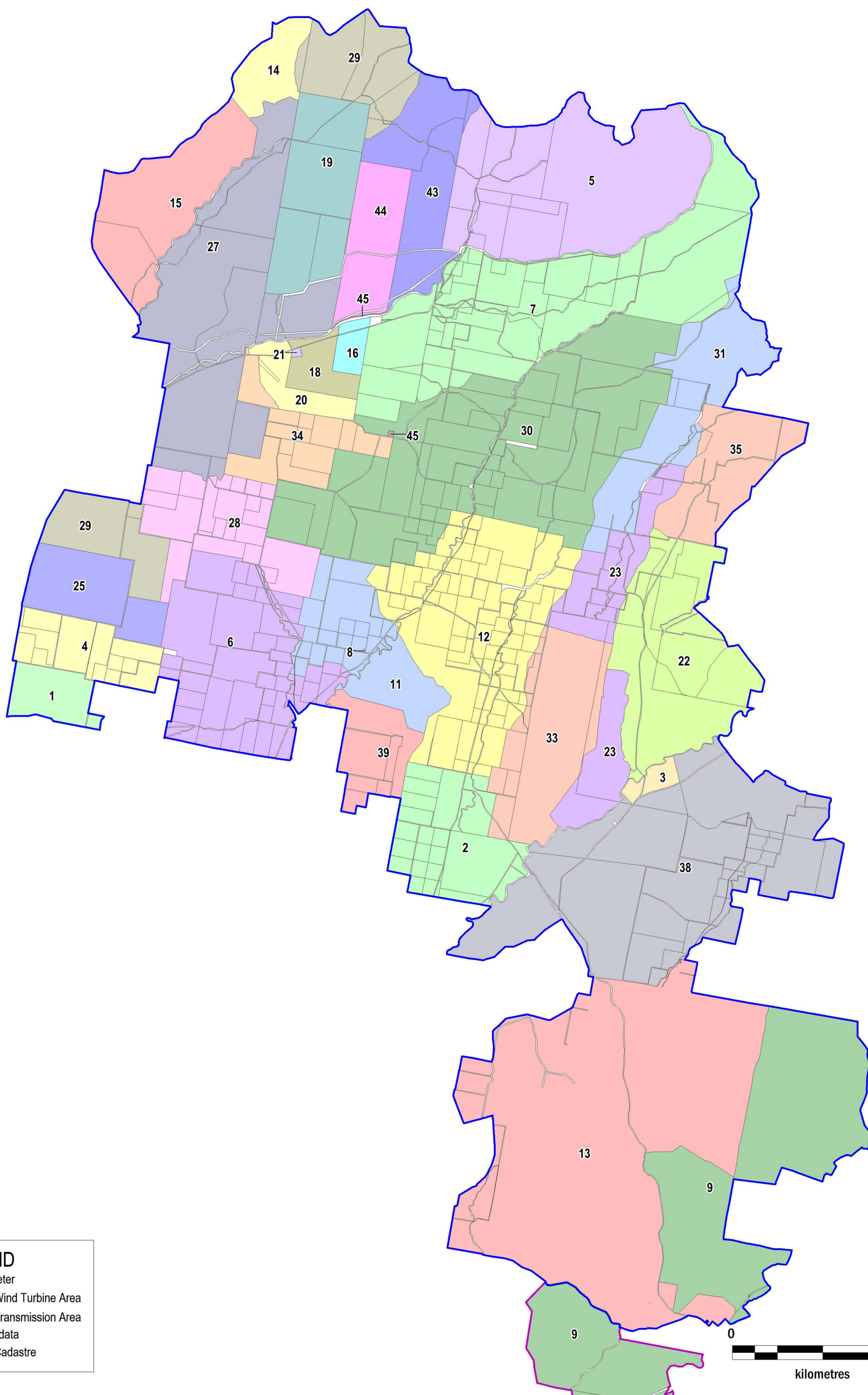
Landowner	Lot/DP
	160/750738
	93/750738
	85/750775
	23/750738
	4/750775
	69/750775
	89/750738
	161/750738
	1/522745
	55/750775
	9/750775
	6/750775
	119/42183
	91/750738
31	96/750775
	43/750775
32	12/734934
33	13/223584
	24/223589
	109/750763
	19/223584
	26/223589
	16/223584
	166/750763
	98/750763
	15/223584
	10/223584
34	97/750763
	21/223589
	94/750738
	80/750738
	79/750738
	39/750738
	95/750738
	1/864461
35	97/750738
	78/750738
	81/750738
	96/750738
	117/42124
	2/232010
36	1/614906
	2/191806
37	72/750736

Landowner	Lot/DP	
38	26/750741	
	71/750741	
	5/750741	
	10/750741	
	65/750741	
	25/750741	
	19/750741	
	57/750741	
	12/750741	
	67/750741	
	30/750741	
	52/561116	
	23/750741	
	28/750741	
	1/112903	
	22/750741	
	24/750741	
	8/750741	
	4/750741	
	27/750741	
	35/750741	
	2/112903	
	11/750741	
	7/750741	
	29/750741	
	5/883170	
	1/847023	
	66/750741	
	56/750741	
	39	168/750763
		62/750763
		27/750763
250/750763		
1/258902		
63/750763		
40	1/431692	
41	73/750736	
	4/1214133	
	61/750736	
42	87/750771	
	69/750771	
	1/191806	
	3/1081382	

Landowner	Lot/DP
	63/750769
	1/191805
	78/750771
	8/114309
	73/750771
	76/750771
	127/750771
	4/1081382
	6/114309
	14/114309
	20/754969
43	1/843798
	2/843798
44	25/721763
45	7002/96915
	43/736630
	33/755439
	55/722794
	7009/1128119
	83/704077
	7300/1136299
	7303/1143562
	7008/1128119
	96/750769
	5/256129
	13/256129
	94/750769
	161/750748
	26/721763
164/750748	


Land parcels that are within the site perimeter yet are not included in the project are below:


Landowner	Lot/DP
Crown	122/750744
Crown	1/249619
Crown	7003/96916
Crown	4/249619
Crown	4/375907
Crown	55/721261
Crown	121/43547
Crown	54/721261
Crown	122/43547
Crown	2/249619
Crown	79/722910
Crown	150/722911
Crown	52/42212
Crown	7001/1030462
Telstra Corporation Ltd	1/747190



LEGEND

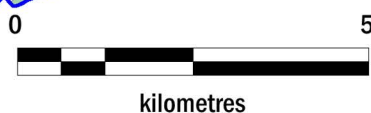
Site perimeter

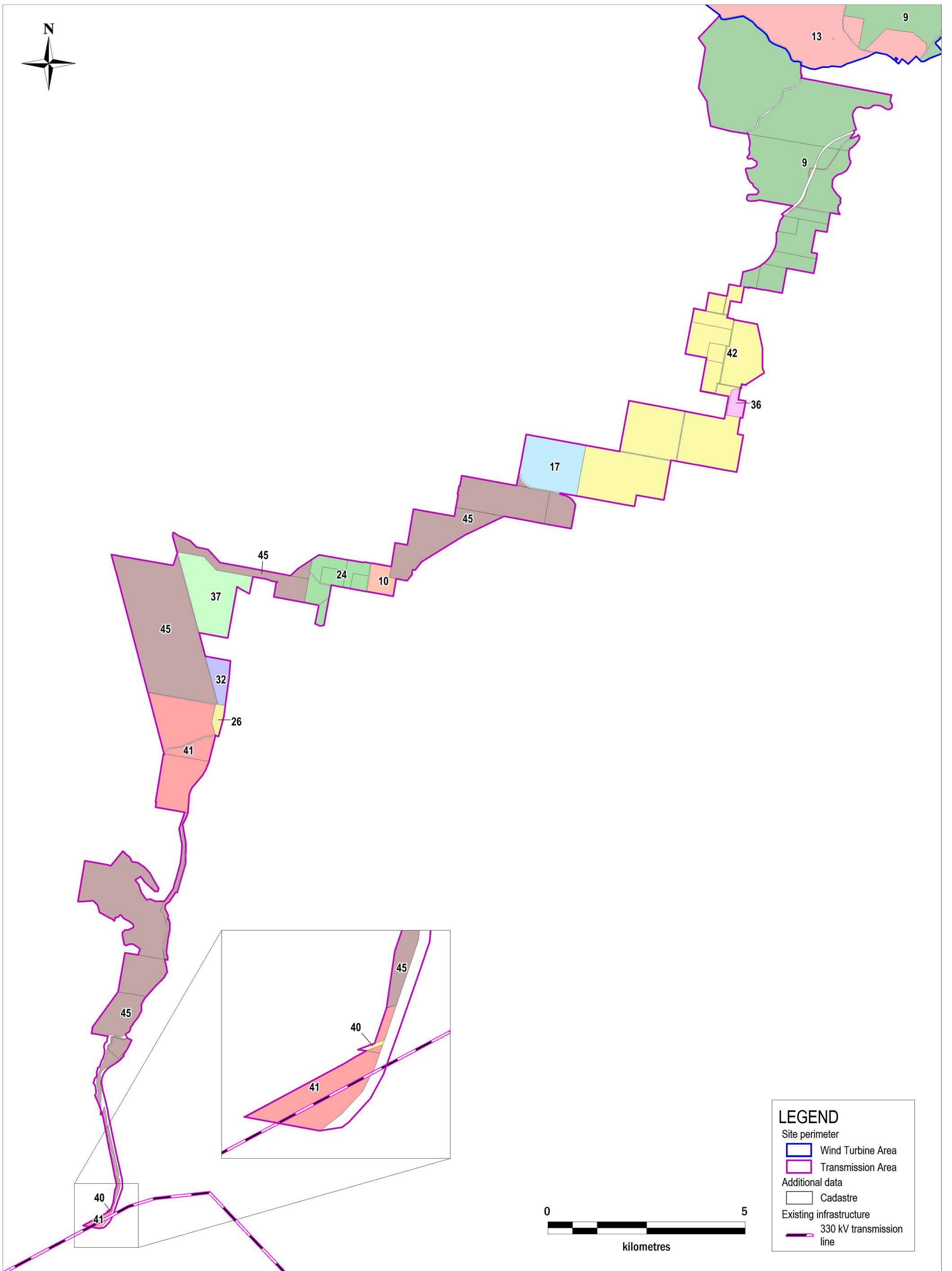
 Wind Turbine Area

 Transmission Area

Additional data

 Cadastre





LEGEND

Site perimeter

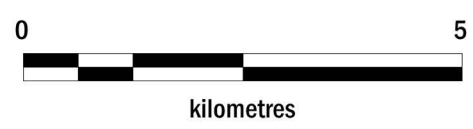
- Wind Turbine Area
- Transmission Area

Additional data

- Cadastre

Existing infrastructure

- 330 kV transmission line



Attachment 2 – Residence coordinates

Residence ID	Easting	Northing
B12-2	759,392	6,441,264
B5-6	759,412	6,475,153
B5-7	759,494	6,475,275
B6-10	759,459	6,474,801
B6-11	759,597	6,472,970
B6-7	759,236	6,472,605
B6-8	759,315	6,473,604
B6-9	759,330	6,473,411
C12-1	764,054	6,440,167
C12-2	764,926	6,442,030
C12-3	764,985	6,441,431
C12-4	763,029	6,443,367
C12-5	761,007	6,443,118
C12-6	763,116	6,442,323
C12-7	764,051	6,440,189
C13-1	761,882	6,436,371
C13-1	763,838	6,439,665
C13-2	763,876	6,438,764
C13-2	761,940	6,439,124
C13-3	763,901	6,439,711
C13-4	764,142	6,438,093
C13-5	764,188	6,438,246
C13-6	764,317	6,436,297
C13-7	764,439	6,439,522
C13-8	761,951	6,439,124
C14-1	762,706	6,434,717
C14-2	764,674	6,431,931
C15-1	764,883	6,425,917
C2-3	764,134	6,490,350
C2-4	764,191	6,490,559
C4-1	761,908	6,482,895
C4-2	762,190	6,481,915
C4-3	762,238	6,481,795
C4-4	762,874	6,481,513
C4-5	762,878	6,482,423
C4-6	762,958	6,482,067
C4-7	762,958	6,482,433
C4-8	763,965	6,482,463
C4-9	764,371	6,480,560

Residence ID	Easting	Northing
C5-1	760,070	6,475,843
C5-10	764,398	6,479,612
C5-2	760,190	6,475,987
C5-3	760,755	6,479,176
C5-4	760,800	6,477,141
C5-5	761,379	6,479,642
C5-6	761,460	6,477,801
C5-7	762,771	6,476,691
C5-8	762,934	6,476,829
C5-9	763,840	6,479,921
C6-1	760,542	6,473,529
C6-2	762,522	6,472,569
C6-3	763,886	6,471,207
C6-4	764,351	6,470,201
C7-1	764,232	6,469,712
C7-2	764,972	6,468,258
D11-1	765,386	6,445,145
D11-2	768,385	6,447,807
D11-3	768,613	6,448,262
D11-4	769,745	6,445,682
D12-1	765,053	6,441,167
D12-10	766,548	6,440,352
D12-11	767,268	6,443,112
D12-12	767,324	6,442,270
D12-13	767,438	6,443,075
D12-14	767,614	6,442,820
D12-15	767,856	6,443,309
D12-16	768,076	6,443,334
D12-17	768,117	6,444,534
D12-18	768,326	6,442,034
D12-2	765,435	6,440,364
D12-20	768,793	6,444,903
D12-21	769,013	6,443,991
D12-22	769,786	6,444,587
D12-22	765,057	6,440,735
D12-3	765,480	6,441,020
D12-4	765,685	6,440,863
D12-5	766,125	6,440,950
D12-6	766,142	6,443,760

<i>Residence ID</i>	<i>Easting</i>	<i>Northing</i>
D12-7	766,159	6,443,727
D12-8	766,264	6,441,160
D12-9	766,276	6,442,860
D13-1	766,454	6,436,196
D13-2	766,505	6,439,870
D13-3	767,059	6,436,571
D13-4	767,104	6,436,627
D13-5	767,667	6,436,290
D13-6	767,721	6,436,001
D13-7	768,039	6,435,990
D13-8	768,118	6,437,797
D14-1	765,278	6,431,951
D14-2	765,347	6,431,575
D4-1	765,422	6,484,412
D4-2	765,727	6,484,644
D4-3	766,088	6,484,562
D4-4	766,362	6,484,106
D4-5	766,906	6,481,291
D4-6	768,370	6,481,475
D4-7	769,558	6,484,285
D4-8	769,576	6,484,342
D4-9	769,800	6,482,050
D6-1	769,184	6,472,228
D6-2	769,411	6,471,608
D6-3	769,414	6,471,866
D7-1	765,177	6,468,242
D7-2	767,488	6,468,138
D7-3	768,296	6,469,155
D7-4	768,469	6,469,763
D7-5	769,535	6,469,184
D7-6	769,644	6,469,327
D7-7	769,734	6,466,440
E11-2	771,514	6,449,094
E11-3	771,545	6,449,122
E11-4	772,077	6,447,142
E11-5	772,087	6,445,815
E11-6	772,918	6,447,441
E11-7	772,943	6,448,492
E11-8	773,425	6,447,854

<i>Residence ID</i>	<i>Easting</i>	<i>Northing</i>
E11-9	773,560	6,447,498
E12-1	774,711	6,440,138
E12-2	774,714	6,440,068
E2-1	774,854	6,493,728
E3-2	774,634	6,485,402
E3-3	774,826	6,485,037
E4-1	773,390	6,484,129
E4-2	773,466	6,484,080
E4-3	773,492	6,484,278
E4-4	773,616	6,482,725
E4-5	774,406	6,484,563
E4-6	774,681	6,484,593
E5-1	773,065	6,475,200
E5-2	773,092	6,475,057
E5-3	774,485	6,478,428
E5-4	774,532	6,478,237
E5-5	774,556	6,478,244
E5-6	774,620	6,478,043
E6-1	771,386	6,473,570
E6-2	773,187	6,474,948
E7-1	770,093	6,466,051
E7-2	770,164	6,465,993
E9-2	771,488	6,458,097
E9-4	772,890	6,459,717
F11-1	777,113	6,448,701
F12-1	775,479	6,440,651
F12-2	775,637	6,444,355
F12-3	777,933	6,442,759
F2-1	775,382	6,493,341
F2-2	776,225	6,493,044
F2-3	776,258	6,492,638
F2-4	776,417	6,492,338
F2-5	776,525	6,492,461
F6-1	779,283	6,470,731
F6-2	779,289	6,470,778
F6-3	779,360	6,470,786
F6-4	779,804	6,470,050
F7-1	775,970	6,469,502
F7-2	776,035	6,469,752

Residence ID	Easting	Northing
F7-3	776,084	6,469,736
F7-4	776,870	6,467,660
F7-5	777,002	6,467,659
F7-6	777,255	6,468,058
F8-1	777,698	6,464,852
F9-1	775,364	6,456,611
F9-2	779,611	6,455,812
F9-3	779,714	6,455,866
F9-4	779,892	6,456,264
F9-5	779,898	6,456,207
F9-6	779,913	6,456,165
F9-7	779,942	6,456,248
G10-1	780,504	6,453,557
G10-10	781,042	6,451,214
G10-2	780,694	6,453,578
G10-3	780,764	6,453,747
G10-4	780,852	6,453,776
G10-5	780,994	6,453,869
G10-7	781,115	6,453,948
G10-8	781,147	6,453,997
G10-9	782,749	6,452,613
G2-1	780,254	6,492,574
G4-1	781,170	6,482,977
G6-1	781,085	6,470,560
G6-2	782,545	6,471,883
G6-3	783,765	6,473,517
G9-1	782,075	6,455,530
G9-2	782,098	6,456,061
G9-3	782,953	6,455,739
H6-1	785,415	6,474,126
H6-3	786,868	6,470,984
H7-1	785,125	6,465,108
H8-1	787,952	6,462,116
H9-1	785,676	6,459,623

Attachment 3 – Turbine coordinates

<i>Turbine No.</i>	<i>Turbine ID</i>	<i>Easting</i>	<i>Northing</i>	<i>Height (m) (AHD)</i>
1	E5-2	770,076	6,478,547	890
2	D5-12	767,027	6,475,684	882
3	D5-22	768,975	6,478,651	888
4	E3-12	772,155	6,488,316	1000
5	D4-5	767,868	6,483,146	780
6	D4-8	768,340	6,484,770	780
7	E5-12	771,399	6,478,445	889
8	D3-20	769,364	6,486,587	800
9	D3-18	769,077	6,486,050	799
10	D4-2	767,611	6,482,866	770
11	D3-17	768,942	6,485,623	780
12	E3-16	773,462	6,488,920	980
13	E3-15	772,771	6,489,554	1002
14	D6-6	767,233	6,472,810	756
15	E3-14	772,795	6,488,857	980
16	E5-11	771,107	6,477,789	88
17	E7-8	774,999	6,468,488	649
18	E5-24	772,999	6,479,156	880
19	D4-4	767,804	6,483,810	790
20	E4-3	773,216	6,480,602	924
21	E3-25	772,026	6,485,906	940
22	D6-9	767,419	6,474,100	781
23	C6-5	763,851	6,473,510	816
24	D5-21	768,879	6,478,264	880
25	E5-18	771,935	6,479,013	898
26	F4-5	776,474	6,482,738	920
27	D5-2	765,079	6,475,815	851
28	E5-21	772,056	6,479,383	897
29	E4-11	771,536	6,484,335	800
30	E4-2	772,939	6,480,332	920
31	E5-6	770,565	6,476,714	910
32	E5-15	771,718	6,478,669	888
33	E5-7	770,391	6,478,774	900
34	F4-2	775,083	6,481,896	906
35	E5-26	772,920	6,478,645	890
36	D5-3	765,379	6,476,318	914
37	E4-7	774,529	6,481,346	910
38	E4-5	773,621	6,480,883	917
39	E5-8	771,190	6,476,835	916

Turbine No.	Turbine ID	Easting	Northing	Height (m) (AHD)
40	E5-4	770,314	6,476,427	901
41	D5-8	766,284	6,477,441	870
42	D4-1	767,243	6,482,687	711
43	E3-24	772,073	6,486,348	960
44	E6-25	770,232	6,474,872	770
45	D3-12	767,905	6,488,924	940
46	E5-1	770,127	6,476,095	863
47	E5-20	772,028	6,476,797	920
48	E4-10	774,793	6,481,632	902
49	D5-18	767,644	6,477,650	879
50	E5-3	770,307	6,475,342	799
51	E5-13	771,407	6,475,263	805
52	D6-11	765,461	6,474,258	788
53	D6-7	767,282	6,473,264	772
54	D5-19	768,151	6,478,599	883
55	D6-8	767,356	6,473,655	780
56	D5-7	765,853	6,476,132	933
57	E3-22	772,491	6,487,064	972
58	E5-14	771,566	6,475,625	845
59	E5-19	771,956	6,476,318	912
60	D5-4	765,798	6,474,962	891
61	C6-6	763,858	6,474,324	842
62	F4-3	775,463	6,482,426	910
63	D5-5	765,881	6,475,371	890
64	D6-1	765,620	6,474,610	840
65	D5-10	766,415	6,476,470	950
66	C5-3	764,609	6,475,171	850
67	E5-23	772,438	6,479,983	892
68	C6-4	763,962	6,473,880	825
70	E4-8	774,691	6,480,596	920
71	D3-6	766,153	6,486,914	920
72	D5-11	766,603	6,476,812	913
73	C6-7	764,167	6,474,538	846
74	C5-1	764,362	6,474,877	870
75	D5-16	767,320	6,478,205	866
76	D5-1	764,872	6,475,454	850
78	E2-3	770,714	6,490,065	1049
79	D5-17	768,108	6,477,995	890
80	D6-10	767,421	6,474,554	839

Turbine No.	Turbine ID	Easting	Northing	Height (m) (AHD)
81	D5-6	766,101	6,475,679	930
82	D5-15	767,303	6,477,485	878
83	E2-5	771,102	6,490,217	1032
84	C3-4	764,734	6,486,809	940
85	F3-6	776,415	6,485,184	880
86	D3-2	765,070	6,486,992	918
87	D2-5	769,193	6,491,105	1069
88	D2-8	769,873	6,490,338	1040
89	D3-5	765,928	6,487,403	960
90	D5-9	766,300	6,476,108	947
91	D3-3	765,517	6,487,338	919
93	D3-15	768,071	6,489,664	961
94	E5-17	771,777	6,475,943	880
95	D3-10	767,316	6,488,442	879
96	F4-4	775,685	6,482,767	900
97	D3-13	768,103	6,489,262	940
98	D2-1	768,529	6,489,772	1020
99	D3-16	768,706	6,485,319	777
100	C3-2	764,424	6,485,998	880
101	D3-7	766,371	6,487,494	949
102	C5-2	764,889	6,476,822	856
103	D5-14	767,808	6,474,713	840
104	D2-7	769,725	6,489,975	1036
105	C3-3	764,606	6,486,331	902
106	D3-11	767,619	6,488,667	940
107	E3-18	772,809	6,490,126	1003
108	F4-31	778,650	6,484,175	911
109	D2-2	768,577	6,490,200	1040
110	D3-9	767,004	6,488,042	872
111	D2-3	768,774	6,490,528	1040
112	E3-17	773,523	6,489,630	1040
113	D3-4	765,671	6,486,432	900
114	E3-23	772,199	6,486,798	980
115	E3-28	772,938	6,485,936	960
116	C3-1	764,267	6,485,655	858
117	E3-5	770,876	6,487,368	846
118	E3-7	771,164	6,487,616	899
119	E3-26	773,631	6,486,533	960
120	E2-4	770,774	6,490,770	1059

Turbine No.	Turbine ID	Easting	Northing	Height (m) (AHD)
121	D3-8	766,621	6,487,807	878
122	E3-27	773,174	6,486,241	960
123	D2-4	769,109	6,490,703	1060
124	E3-10	771,597	6,487,787	920
125	E3-21	773,094	6,487,107	979
126	D6-4	767,127	6,472,425	732
127	E3-8	771,289	6,486,039	860
128	E3-29	772,768	6,485,595	898
129	E3-30	772,611	6,485,236	860
130	E5-10	771,190	6,477,293	917
131	D5-13	767,143	6,477,146	869
132	E3-11	771,893	6,488,024	980
133	E3-6	771,061	6,485,729	880
134	E3-20	773,313	6,487,417	978
135	E3-4	770,832	6,485,440	815
136	E4-1	772,157	6,480,467	910
137	E3-19	773,547	6,488,078	940
138	E3-13	772,519	6,488,535	1000
139	E4-12	772,157	6,484,436	840
140	D4-6	768,013	6,484,128	763
141	D5-23	769,784	6,478,362	889
142	F3-14	777,496	6,488,887	1037
143	F6-10	776,175	6,473,575	780
144	E7-7	774,913	6,468,081	660
145	F3-8	776,718	6,488,330	95
146	F5-25	777,922	6,477,194	871
147	F3-12	777,148	6,488,678	1004
148	F5-16	777,032	6,478,516	920
149	F4-8	776,875	6,481,267	930
150	F5-7	776,086	6,476,221	830
151	E6-21	774,422	6,473,676	780
152	F4-29	779,960	6,481,127	979
153	E6-11	772,835	6,470,561	750
154	F3-3	776,102	6,486,364	920
156	F3-18	777,646	6,487,456	1040
157	F4-25	779,625	6,480,335	950
158	F5-27	778,687	6,479,123	905
159	F4-14	777,770	6,483,715	920
160	F5-14	777,048	6,477,913	920

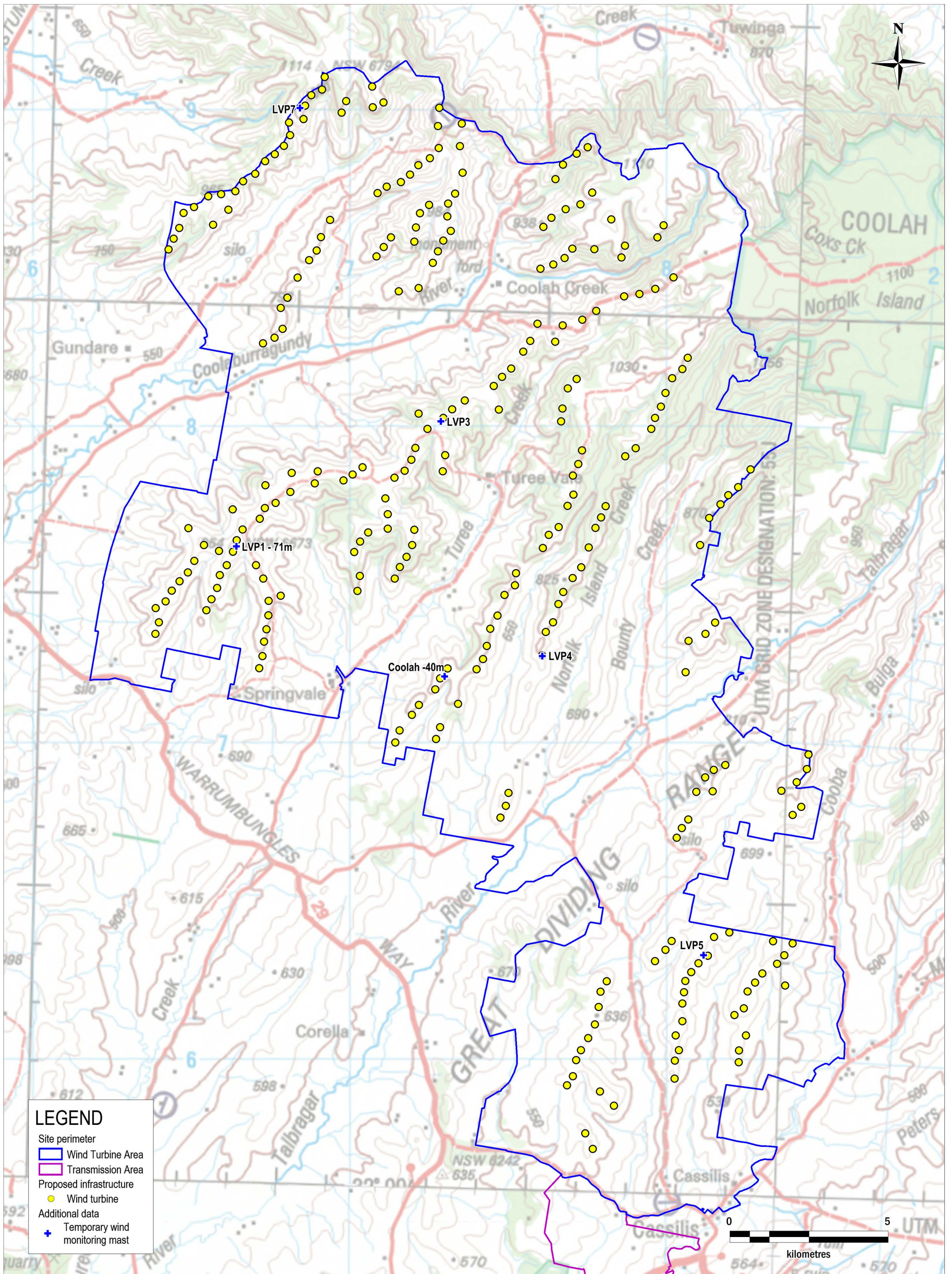
Turbine No.	Turbine ID	Easting	Northing	Height (m) (AHD)
161	F3-28	778,673	6,485,773	1024
162	G4-2	780,169	6,481,590	1007
163	F4-24	779,511	6,479,984	950
164	F6-13	776,728	6,474,835	820
165	F4-10	777,151	6,481,564	928
166	F3-37	779,894	6,486,420	1080
167	F5-18	777,199	6,478,879	920
168	G6-6	781,220	6,473,510	851
169	E6-24	774,874	6,474,745	810
170	E6-4	771,949	6,470,953	760
171	G5-4	781,047	6,476,314	780
172	F4-9	777,331	6,483,435	939
173	E6-7	772,707	6,470,195	732
174	F3-35	779,706	6,486,038	1020
175	E6-5	772,167	6,471,265	770
176	F3-11	777,019	6,485,678	980
177	F4-33	775,913	6,483,306	905
178	F6-7	776,059	6,472,837	760
180	G5-9	781,943	6,477,891	880
181	F4-22	779,135	6,484,253	940
182	G5-8	781,690	6,477,602	864
183	E6-20	774,309	6,473,134	780
184	F5-29	779,012	6,479,376	917
185	F5-19	777,534	6,476,242	830
186	G6-4	780,685	6,473,296	832
187	G4-5	780,657	6,482,236	1010
188	F5-17	777,294	6,475,612	820
189	F4-26	779,634	6,484,412	1000
190	F3-10	776,773	6,485,385	960
191	E6-2	771,559	6,470,459	734
192	F4-28	779,809	6,480,692	946
193	F6-11	776,408	6,473,879	780
194	G5-6	781,337	6,477,178	870
195	F5-15	777,023	6,475,273	830
196	E6-13	773,075	6,472,419	780
197	G4-3	780,212	6,484,775	1000
198	E6-18	774,197	6,472,718	770
199	F5-1	775,203	6,475,050	770
200	G5-12	782,644	6,478,708	880

<i>Turbine No.</i>	<i>Turbine ID</i>	<i>Easting</i>	<i>Northing</i>	<i>Height (m) (AHD)</i>
201	E6-1	771,426	6,470,084	727
202	F6-12	776,572	6,474,450	810
203	E6-9	772,689	6,471,761	793
205	F5-24	777,743	6,476,858	890
206	E6-17	773,994	6,472,394	780
207	F5-20	777,322	6,479,313	909
208	F4-34	776,709	6,483,257	930
209	F4-12	776,663	6,480,221	896
210	F5-8	776,274	6,476,641	867
211	F5-9	776,583	6,476,889	844
212	F3-5	776,352	6,486,655	902
213	F3-4	776,009	6,485,046	860
214	G6-7	781,526	6,473,871	850
215	F5-10	776,862	6,477,556	908
217	F5-2	775,234	6,475,426	780
218	E6-22	774,655	6,474,088	789
219	E6-10	772,837	6,472,109	780
220	F3-24	778,247	6,486,603	1080
221	F4-7	776,704	6,480,627	930
222	F5-26	778,065	6,477,548	847
223	F3-25	776,807	6,486,928	925
224	G6-3	780,589	6,472,298	740
225	E6-14	773,408	6,471,305	779
226	F3-7	776,484	6,487,872	920
227	F3-27	778,566	6,485,399	1019
229	E7-6	774,748	6,467,705	660
230	F3-19	777,710	6,485,668	1004
231	G8-25	783,351	6,463,802	660
232	G8-15	781,972	6,464,084	679
233	G8-14	781,493	6,463,939	670
234	G8-9	782,495	6,460,832	570
235	G8-12	781,295	6,463,343	660
236	G7-12	784,240	6,468,049	730
237	F9-1	776,846	6,459,250	628
238	G8-1	780,148	6,463,809	637
239	G7-15	784,426	6,469,246	763
240	G8-27	783,974	6,463,734	660
241	G9-29	780,247	6,459,465	610
242	G7-6	781,209	6,468,977	767

Turbine No.	Turbine ID	Easting	Northing	Height (m) (AHD)
243	F9-5	777,890	6,459,054	640
244	G7-10	783,615	6,468,558	770
245	G7-14	784,066	6,467,762	711
246	G9-28	780,253	6,460,030	600
247	G7-11	784,103	6,468,825	780
248	G7-1	780,312	6,467,072	740
249	G7-16	784,471	6,469,700	772
250	G8-26	783,736	6,462,401	650
251	G7-7	781,448	6,468,539	760
252	G7-2	780,477	6,467,375	740
253	G7-4	780,934	6,468,523	757
254	G8-21	782,790	6,462,499	650
255	G7-9	781,848	6,469,371	760
256	G8-24	783,709	6,463,358	669
257	F8-7	777,904	6,462,206	630
258	G8-19	782,430	6,461,682	650
259	G8-20	782,552	6,462,222	650
260	G8-5	780,490	6,461,838	634
261	G7-3	780,675	6,467,650	740
262	F8-6	777,849	6,461,730	627
263	G8-7	780,542	6,462,189	640
264	G8-23	783,485	6,463,093	660
265	F8-8	778,103	6,462,544	620
266	G8-16	782,137	6,461,473	639
267	F8-9	779,629	6,463,172	640
268	G8-22	783,015	6,462,789	650
269	G8-3	780,383	6,460,362	630
270	G8-6	780,584	6,462,549	640
271	F8-10	779,953	6,463,534	640
272	G8-4	780,486	6,461,281	640
273	G8-17	782,273	6,459,982	580
274	F9-6	778,329	6,458,606	640
275	G8-10	780,769	6,462,832	646
276	F8-2	777,290	6,460,358	649
277	F9-3	777,425	6,457,733	610
278	G7-8	781,481	6,469,214	780
279	F9-4	777,662	6,457,241	600
280	G8-2	780,277	6,460,830	639
281	F9-2	777,031	6,459,541	640

<i>Turbine No.</i>	<i>Turbine ID</i>	<i>Easting</i>	<i>Northing</i>	<i>Height (m) (AHD)</i>
282	F8-3	777,514	6,460,741	640
283	G8-11	781,000	6,463,107	659
284	F8-4	777,725	6,461,179	630
285	F8-1	777,133	6,460,050	650
286	G8-18	782,275	6,460,354	590
287	G4-4	780,494	6,481,880	1009
288	G5-10	782,252	6,478,146	880
155	F3-29	777,272	6,487,078	965
77	D6-5	767,255	6,475,257	852

Attachment 4 – Wind monitoring masts



Attachment 5 – Additional Consultation Material

Liverpool Range

Wind Farm

EPURON

Project Update No 11 | August 2014

Project Update

The Environmental Assessment (EA) for the Liverpool Range Wind Farm (LRWF) was first submitted to the NSW Department of Planning & Environment (DP&E) for assessment in February 2013. The document has been revised several times since then and on the 7th of July 2014 the EA was deemed adequate for exhibition by the DP&E. This means the EA will be on public exhibition for 62 days from the 1st of August 2014 to the 1st of October 2014.

Public Exhibition – Have Your Say

You can view printed documents during normal business hours, at:

- Warrumbungle Shire Council – Coonabarabran office
- Warrumbungle Shire Council – Coolah office
- Upper Hunter Shire Council – Scone office
- Upper Hunter Shire Council – Merriwa office
- Liverpool Plains Shire Council – Quirindi office
- Mid-Western Regional Council – Mudgee office
- Dunedoo Library
- Cassilis Library
- Department of Planning & Environment, Sydney
- Nature Conservation Council, Sydney

The EA documents may also be viewed on the Epuron website (www.epuron.com.au) and the Department of Planning & Environment website (www.planning.nsw.gov.au)**. Any person wishing to make a submission must ensure it reaches the DP&E by close of business Wednesday 1st of October 2014.

Stages of the Environmental Assessment Process

- 1 Submit Preliminary Environmental Assessment and request for Part 3A assessment to DPI. *
- 2 Director General's Requirements issued by DPI.
- 3 Preparation and submission of the Environmental Assessment to DPI.
- 4 Adequacy review by DPI to decide if Environmental Assessment is acceptable for exhibition.
- 5 **WE ARE HERE. Environmental Assessment publicly exhibited by DPI for review & comment.**
- 6 Epuron responds to submissions.
- 7 Assessment and Determination by the Minister

Community Consultation Committee

The most recent meeting of the Community Consultation Committee (CCC) was held on the 8th of August 2014. The CCC has met on seven occasions over the last 2 years to review project information and provide feedback where required. This feedback has been incorporated into the design of the wind farm where possible. The CCC continues to discuss key aspects of the project including local impacts and the proposed establishment of a community enhancement fund. The CCC has been a huge benefit in helping manage consultation between Epuron and the community.

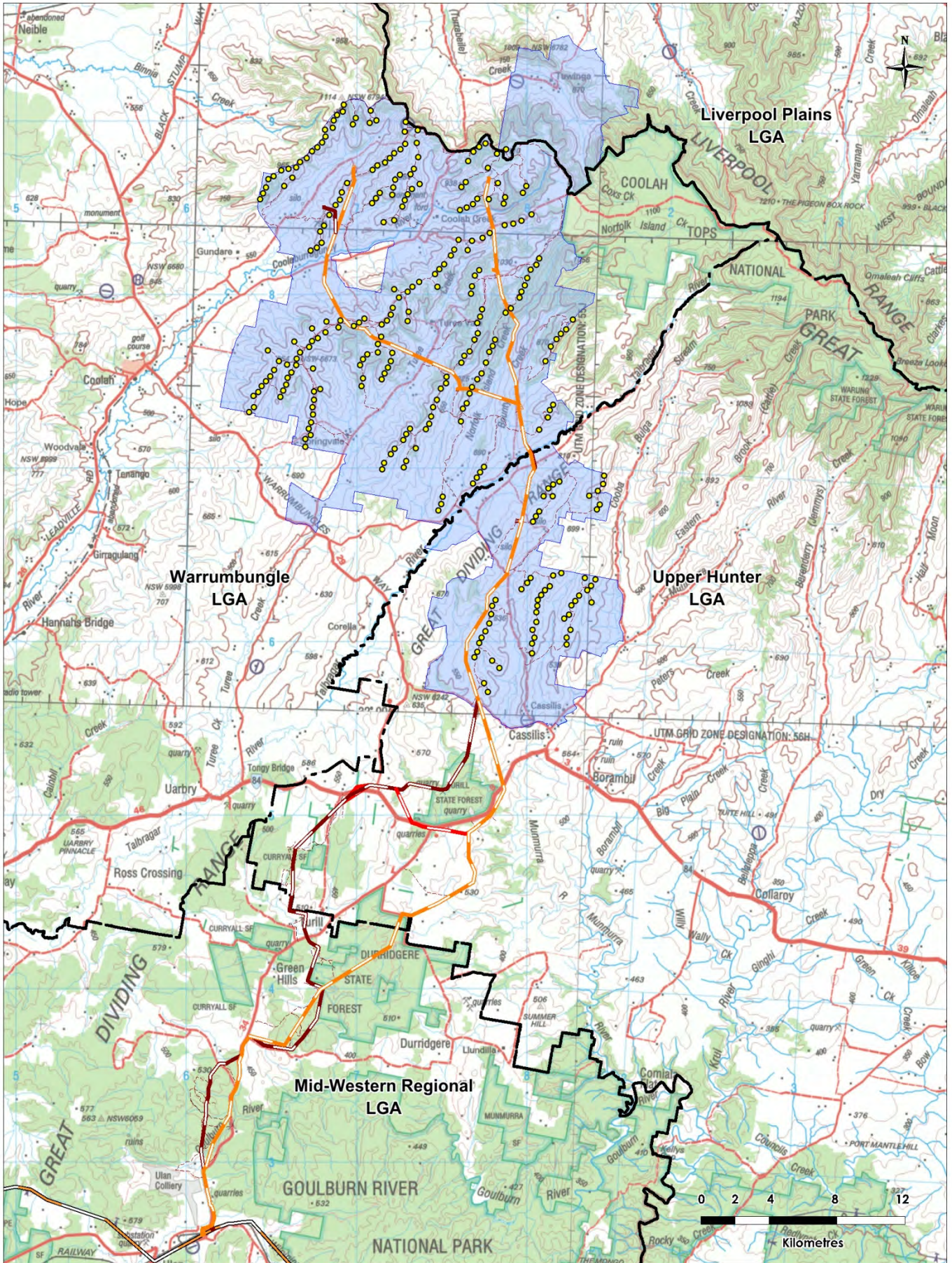
Project Locality Map

The **enclosed** wind turbine layout was submitted as part of the EA and comprises 288 turbines.

The technical and commercial arrangement for progressing a preferred and alternate powerline route are continuing. Where possible, Epuron has accommodated community feedback into the design which has culminated into the proposed routes in the EA.

* On 21 March 2014 the Planning Minister announced the transition of the project from transitional Part 3A to 'State Significant Development' under Part 4 of the EP&A Act 1979.

** Direct link: http://majorprojects.planning.nsw.gov.au/index.pl?action=view_job&job_id=4418



LEGEND

- Project area
- Proposed wind turbine
- Proposed access track
- Preferred overhead powerline
- Alternative overhead powerline
- Second alternative overhead powerline
- Existing 330 kV transmission line
- Local Government Area boundaries
- Preferred substation
- Alternative substation

EPURON

PROJECT

Liverpool Range
Wind Farm

TITLE

Project boundary and
infrastructure overview

SCALE	DATE	DRAWN
1:200,000 of A3	15/11/13	MK

Industry News

Australian Medical Association (AMA)

In March 2014 the AMA released their Position Paper which states there is no credible evidence that wind farms have a negative impact on the health of people who live near them. The paper found infrasound and low-frequency sound generated by modern wind farms in Australia is well below the level where known health effects occur. The paper can be found at <https://ama.com.au/position-statement/wind-farms-and-health-2014>.

Intergovernmental Panel on Climate Change (IPCC)

The fifth report from the IPCC was released in March 2014 confirming warming of the global climate system is unequivocal, human influence on the climate system is clear, and limiting climate change will require substantial and sustained reductions of greenhouse gas emissions. Substantial Australian impacts include more frequent and more extreme weather events and a continued decline in rainfall in southern Australia – for more information see the Australian government website <http://www.climatechange.gov.au/climate-change>

Renewable Energy Target (RET)

In February 2014, the review of the RET scheme was announced by the Commonwealth Government. The review is to examine the operation, costs and benefits of the RET scheme including the economic, environmental and social impacts. The RET aims to achieve at least 20% of renewable energy by 2020. It was due to report in the middle of the year.

National Health & Medical Research Council (NHMRC)

In February 2014 the NHMRC released its draft information paper on wind farms and health, which found that there is no reliable or consistent evidence that proximity to wind farms or wind farm noise directly causes health effects. Experts in social psychology, sleep, environmental epidemiology, and sound/acoustic engineering, were convened to oversee the review. The draft paper can be found at <http://consultations.nhmrc.gov.au>

Open Day Information

Event: Exhibition Open Day 1
Date: Monday 8th September
Time: 12 noon to 7pm
Venue: Coolah Sports Club
7 Goddard St Coolah

Event: Exhibition Open Day 2
Date: Tuesday 9th September
Time: 11 am to 6pm
Venue: Cassilis Bowling Club
Mudgee Rd Cassilis



Community Open Days to be held in Coolah & Cassilis

We are having two public open days for the LRWF during the exhibition of the environmental assessment to assist the community to view the wind farm layout and general project information.

The first exhibition open day will be held in Coolah from 12pm – 7pm on Monday the 8th of September and then 11am – 6pm in Cassilis on Tuesday the 9th of September.

The exhibition of the EA is the public's opportunity to view and discuss any queries or concerns about the project.

In attendance will be Epuron project managers, visual & noise specialists, large printed maps, photomontages and feedback forms. Members of the Community Consultation Committee have agreed to meet at 5pm at the Open Days if they are available.

We look forward to seeing you at one of the open days and thank you for your continued support.

Please send us your feedback

Write to us:

Liverpool Range Wind Farm
Level 11, 75 Miller Street
North Sydney NSW 2060

Email or Internet:

info@epuron.com.au
www.epuron.com.au

Phone us:

02 8456 7400



A copy of the EA will be available at each Open Day for viewing

Merry Christmas 2014

*Epuron wishes you and your family a very **Merry Christmas** and a **Happy and Safe New Year**. It has been a challenging year for renewable energy in Australia but we are all heartened by how many Australians have clearly and repeatedly expressed their support for wind energy and solar power.*

What is happening to the Renewable Energy Target (the RET)?

The Renewable Energy Target is at a crisis point with the Abbott government trying to reduce the legislated target by 40%. Such a reduction would decimate the renewable energy industry and prevent wind and solar projects from being built.

Before the election the Abbott government did not indicate that it was intent upon slashing an industry sector which employs 21,000 people directly and tens of thousands more and which has resulted in over \$10 billion worth of investments to date.

What is driving the government's actions on the renewable energy sector? It appears that coal investment is to be protected at all costs including the costs to the environment and to the next generation who will have to pay to clean up after us.

Australia is a rich country. The RET costs the average NSW electricity retail customer around \$66 a year on a \$2,200 average annual electricity bill (IPART) - that equates to \$1.27 a week per household. See the Australian Energy Market Operator (AEMO) graphic below.

As the proportion of renewables increases in NSW the current modest cost is expected to change to a benefit.

This has already happened in SA as wholesale electricity prices are reduced by the wind and solar generation.

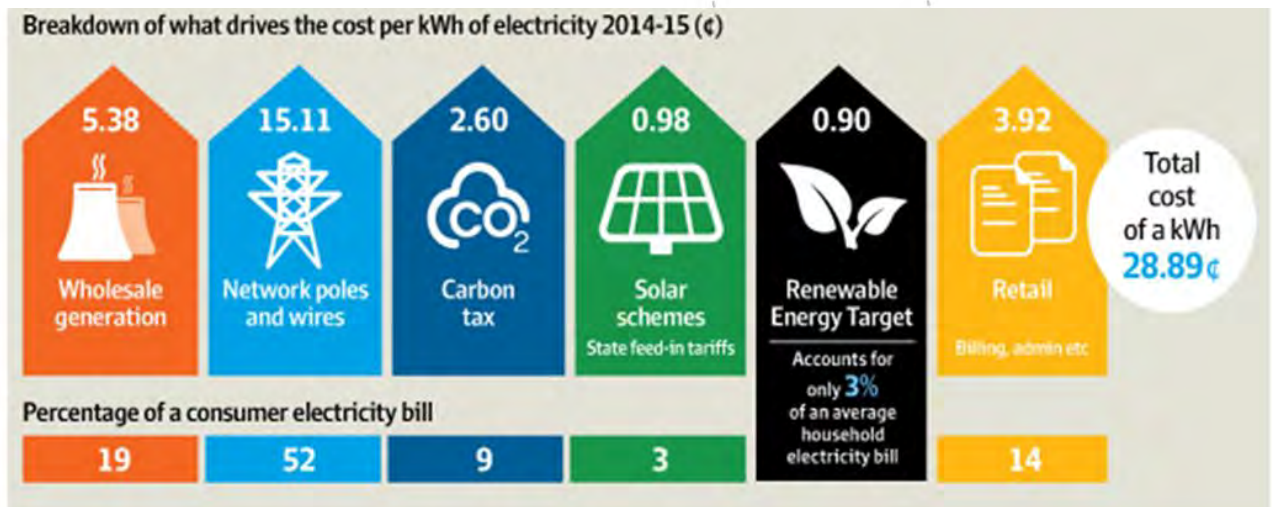
The key beneficiaries of solar and wind farm projects are the regions where the jobs are created in construction and maintenance.

However, we all benefit from the reduction in greenhouse gas emissions and climate change driven severe weather events.

We will do all we can to ensure this region doesn't miss out on its portion of the \$14.5 billion of future investment out to 2020 that the current RET target of 41,000 GWh by 2020 would bring.

Act now

- Contact your local Federal and State MP.
- Ask for a meeting. Take like-minded neighbours and local groups.
- Join the Australian Wind Alliance – see overleaf.
- Visit: <http://southernrtablelandsrenewables.org.au/> for details of projects in the region and see what local people are doing.



Contact us:

The Epuron office will be closed from **24th December 2014 until the 5th January 2015**
Feel free to call on 02 8456 7400 or email info@epuron.com.au

Australians want the Federal Government to keep investment in renewable energy according to new polling.

Australians overwhelmingly (89%) think the 41,000 GWh Renewable Energy Target **should be increased or stay the same**, and not face cuts as currently proposed by the (ReachTEL December 2014).

The poll, commissioned by WWF-Australia, surveyed 5,036 residents across three states. WWF Australia's National Manager, Climate Change, Kellie Caught, said the polling also found that 84% of people surveyed believe it is important the Federal Government invest in renewable energy. Read the report for yourself at: http://www.wwf.org.au/news_resources/?12000/australians-want-federal-government-to-invest-in-renewable-energy-power



Australian Wind Alliance

Many farmers keen to see investment in their region, whether they are hosts of, or neighbours to a proposed wind farm, have asked what they can do to support wind farm projects. One action is to join the Australian Wind Alliance <http://www.windalliance.org.au/>

Crookwell farmer Charlie Prell not only joined, he is now a NSW organiser for the group along with Mhairi Fraser. With the group GetUp! they have made an advert – see screen shot right. You can see the ad on the AWA site .

A farmer's plea for the Renewable Energy Target

Posted by Andrew Bray on December 03, 2014 @ 4:00 PM



Actually, this guy is no ordinary farmer. He's one of our NSW organisers, Charlie Prell, who runs a sheep farm in Crookwell, north of Goulburn in NSW. And the other people in the video are the local Mayor and Goulburn business owners who all understand the vital economic importance of renewable energy for their region.

An excellent shoot from GetUp!

Australia has been named the worst performing industrial country on climate change

A performance index released at the **Lima climate talks in Peru this month** has put Denmark in the best-performing slot, followed by Sweden and Britain.

The report states: "The new conservative Australian government has apparently made good on last year's announcement and reversed the climate policies previously in effect. As a result, the country lost a further 21 positions in the policy evaluation compared to last year, thus replacing Canada as the worst-performing industrial country."

Jan Burck, report author at Germanwatch noted: "It is interesting that the bottom six countries in the ranking – Russia, Iran, Canada, Kazakhstan, Australia and Saudi Arabia – all have a lot of fossil fuel resources. It is a curse. The fossil fuel lobbies in the countries are strong. In Australia they stopped what were some very good carbon laws."



Health impacts? Not from wind farms.

SA Court sides with science and expertise...

If you are worried about the health impacts from electricity generation your focus should be on fossil fuel emissions.

In November this year the Environment, Resources and Development Court of South Australia overturned a council rejection of the Stony Gap Wind Farm. In its judgment the Court dismissed the evidence and expertise of Waubra Foundation's Sarah Laurie.

It preferred the expert advice of Professor Wittert who referred to a study which looked at all 51 Australian wind farms with a total of 1634 turbines.

The study found that 33 out of 51 wind farms, or 64.7%, including 18 wind farms with a turbine size of more than 1MW, have never been subject to noise or health complaints.

These 33 wind farms have an estimated 21,633 residents within 5 kms, and have a combined total operating history of 267 years. Across Australia, 1 in 254 residents appears to have complained.

94% of those complaining live near 6 wind farms targeted by anti wind farm groups.

See:

<http://www.courts.sa.gov.au/Judgments/Lists/Judgments/Attachments/1674/2014%20SAERDC%2048.pdf>



The PM's '**Coal is good for humanity**' statement is seen for what it is –

..the equivalent of a tobacco company saying that cigarettes are good for your health.

As one commentator noted: "Building a bunch of big coal plants will no more cure energy poverty than building a bunch of big banks will solve poverty".

Liverpool Range

Wind Farm

Project Update No 12 | September 2015

Where have we been?

Political Background

It has been a challenging 18 months for the renewable energy industry.

In February 2014 Prime Minister Tony Abbott announced an independent review of the Renewable Energy Target, headed by Dick Warburton. The report from that review was released in August of 2014 and it took 10 months of political negotiation to settle on an agreed target. This hiatus caused investment in large scale renewable energy projects to halt while the regulatory environment was suspended.

In June 2015 the Renewable Energy Target (Renewable Energy (Electricity) Act 2000) was reset to 33,000 GWh, down from the original 41,000 GWh. While the target is now in place, reviving investor confidence, Tony Abbott and Joe Hockey continue to state their animosity towards wind farms – despite widespread Australian support for wind farms – see report below.

Wind farm projects cost millions of dollars to develop and approve so during this period when our investments were at serious risk from political uncertainty and confusion, external costs and spending were minimised on our projects.

Project Update

The Liverpool Range Wind Farm Environmental Impact Assessment was on public exhibition from 1 August to 1 October 2014. There were 43 submissions made, 12 of these were from government agencies. Of the 31 public submissions, 5 were supportive, 9 made comments and 17 objected. Nine of the 17 objections came from addresses over 200km away.

The next step in the planning process is the preparation of the Response To Submissions (RTS) document which addresses questions raised through submissions and other changes. We aim to lodge the RTS with the Department of Planning this summer.

One focus is the powerline route connecting the wind farm to the grid near Ulan mine. We have been working to minimise the environmental impacts of this and when we have identified the lowest impact options they will be fully surveyed and included in the RTS report to the government. Once finalised a map of the options will be included in a forthcoming newsletter.

In July the Community Consultative Committee met in Coolah and on top of the agenda was how to manage the Community Enhancement Fund which will be established when the wind farm happens. **See overleaf for more details.**

Preferred Energy Mix - Climate Institute Report

The renewable energy industry knows that the majority of Australians want renewable energy projects. Reports and surveys consistently tells us so. Last month it was the Climate Institute which revealed that **69% of Australians want wind energy**, second only to solar power. Read the report at <http://www.climateinstitute.org.au/climate-of-the-nation-2015.html>

Despite a year which has seen renewable energy targets wound back, and attacks on wind power, support for both solar and wind in Australians' preferred energy mix has grown.

1. Solar	82%	1. Solar	84%
2. Wind	64%	2. Wind	69%
3. Hydro (Dams)	48%	3. Hydro (Dams)	47%
4. Gas	28%	4. Tidal/Wave	30%
5. Geothermal	22%	5. Geothermal	24%
6. Tidal/Wave	21%	6. Gas	21%
7. Nuclear	20%	7. Nuclear	13%
8. Coal	15%	8. Coal	13%



Community Consultation

How will the communities impacted by the wind farm benefit from it?

During operation the wind farm owner makes an annual payment into a community enhancement fund. This fund is distributed according to an agreement put in place in line with planning conditions.

On the 28th of July the Community Consultative Committee (CCC) had its 9th meeting in Coolah. The Warrumbungle Shire Council and the Upper Hunter Shire Council made a presentation about how councils could manage the community benefit fund from the wind farm through a Voluntary Planning Agreement or VPA.

The key local 'funding' provided by the wind farm is:

1. Construction Phase: The wind farm owner must upgrade or make good the roads used for construction;
2. Operation Phase: An amount per turbine is paid into a community enhancement fund for distribution among the local communities;
3. Operation Phase: The roads used by the wind farm operations staff must be maintained by the wind farm owners.

The CCC members want to ensure that the impacted communities of Coolah, Cassilis, Merriwa and Turill benefit from the fund.

Actions:

1. A Community Consultation Committee meeting in September will be dedicated to creating a draft document on how best to secure the arrangements the councils and community wants. The document will be made publicly available for comments and feedback. The final agreement will be guided by that feedback.
2. A Business-ready workshop will be arranged to advise local individuals, service providers and businesses on what they can do to be ready and eligible for sub-contract work. See below.

Jobs and opportunities

Epuron and the NSW government would like to help local individuals and businesses to be well placed to be eligible for work associated with the wind farm. A workshop is being organised, date and locations to be confirmed, and we want to invite anyone who might be interested to come along.

If you have machinery, services, accommodation or skills which could be used during construction or operation of the wind farm please register an interest with us.

Places may be limited, local businesses take priority.

Here is a list of jobs needed on most wind farms....

- Electricians HV/ LV
- Engineers
- Heavy vehicle drivers
- Steel fixers, & Welders
- Riggers & Labourers
- Crane operators
- Excavator operators
- Mechanical fitters
- Project managers
- Environmental officers
- Plumbers
- Supervisory roles
- Landscapers & Gardeners
- Cleaners
- Maintenance staff
- Caterers
- Administration staff
- Safety officers
- Accommodation services



What can you do?

We have been asked by a number of people "...what can we do to help make the wind farm happen?" Here are some actions that could help:

Contact your local MPs:

Federal member for Parkes

Mark Coulton

Dubbo office: (02) 6882 0999

Mark.Coulton.MP@aph.gov.au

State member for Upper Hunter

Michael Johnsen MP

(02) 6543 1065

upperhunter@parliament.nsw.gov.au

State member for Barwon

Kevin Humphries MP

In Moree - (02) 6752 5002

barwon@parliament.nsw.gov.au

Don't forget the Premier, Mike Baird and the Minister for Planning, Rob Stokes.



Also, consider joining the **Australian Wind Alliance**. They are working with local communities for a robust wind industry in Australia. That's their photo at the top of this column.

<http://www.windalliance.org.au>



Wind Farm Photomontage L2 – from Rotherwood Road near Cassilis*, looking NNW. 3km to nearest turbine

Health

What is the current position of Australia's health experts?

National health and Medical Research council:

"Examining whether wind farm emissions may affect human health is complex, as both the character of the emissions and individual perceptions of them are highly variable. After careful consideration and deliberation of the body of evidence, NHMRC concludes that there is currently no consistent evidence that wind farms cause adverse health effects in humans." February 2015

https://www.nhmrc.gov.au/files/nhmrc/publications/attachments/eh57_nhmrc_statement_wind_farms_human_health_0.pdf

Australian Medical Association:

"...The infrasound and low frequency sound generated by modern wind farms in Australia is well below the level where known health effects occur, and there is no accepted physiological mechanism where sub-audible infrasound could cause health effects." March 2014

<https://ama.com.au/position-statement/wind-farms-and-health-2014>

Fires and wind farms

The Senate's Select Committee on Wind Turbines has drawn out some excellent information putting to bed myths about wind farms.

For example rumours that fires cannot be fought around a wind farm are debunked in the NSW Rural Fire Services submission which

says: "A fire moving across the area of a wind farm is generally managed in the same way as any other grass and/or bushfire".

Working with other fire fighting agencies within the Australasian Fire and Emergency Services Council (AFAC) they have brought out a national position statement which notes 'wind turbines are not expected to pose increased risks due to wind turbulence or the moving blades'.

See submission 97 at:

<http://www.afac.com.au/docs/position/wind-farms-bushfires.pdf?sfvrsn=14>



Young Farmers want action on climate change

NSW Farmers have changed their policy about tackling climate change thanks to a drive by the Young Farmers' Council.

NSW Farmers new policy says farmers are on the front lines of seasonal variability and calls on governments to "support the transition from fossil fuels like coal and gas towards more renewable energy sources in rural, regional and remote areas where their operation can be shown to be of a net benefit to farming communities".

The motion rescinded an existing policy that said "until a royal commission is held to explore the scientific veracity and soundness of claims that carbon is a pollutant, we should not embark on any action which will cost us as a nation dearly in money, foregone export earnings and effort for no gain".

Angela Martin from the Young Farmers' Council described the policy shift as heartening.


"Our change to policy sends a clear signal to government that we believe that climate variability is an issue that we are dealing with every day," Ms Martin, from Mullaley, west of Gunnedah, said.

<http://www.weeklytimesnow.com.au/news/national/nsw-farmers-call-for-support-of-renewables/story-fnkfnspy-1227444166250>

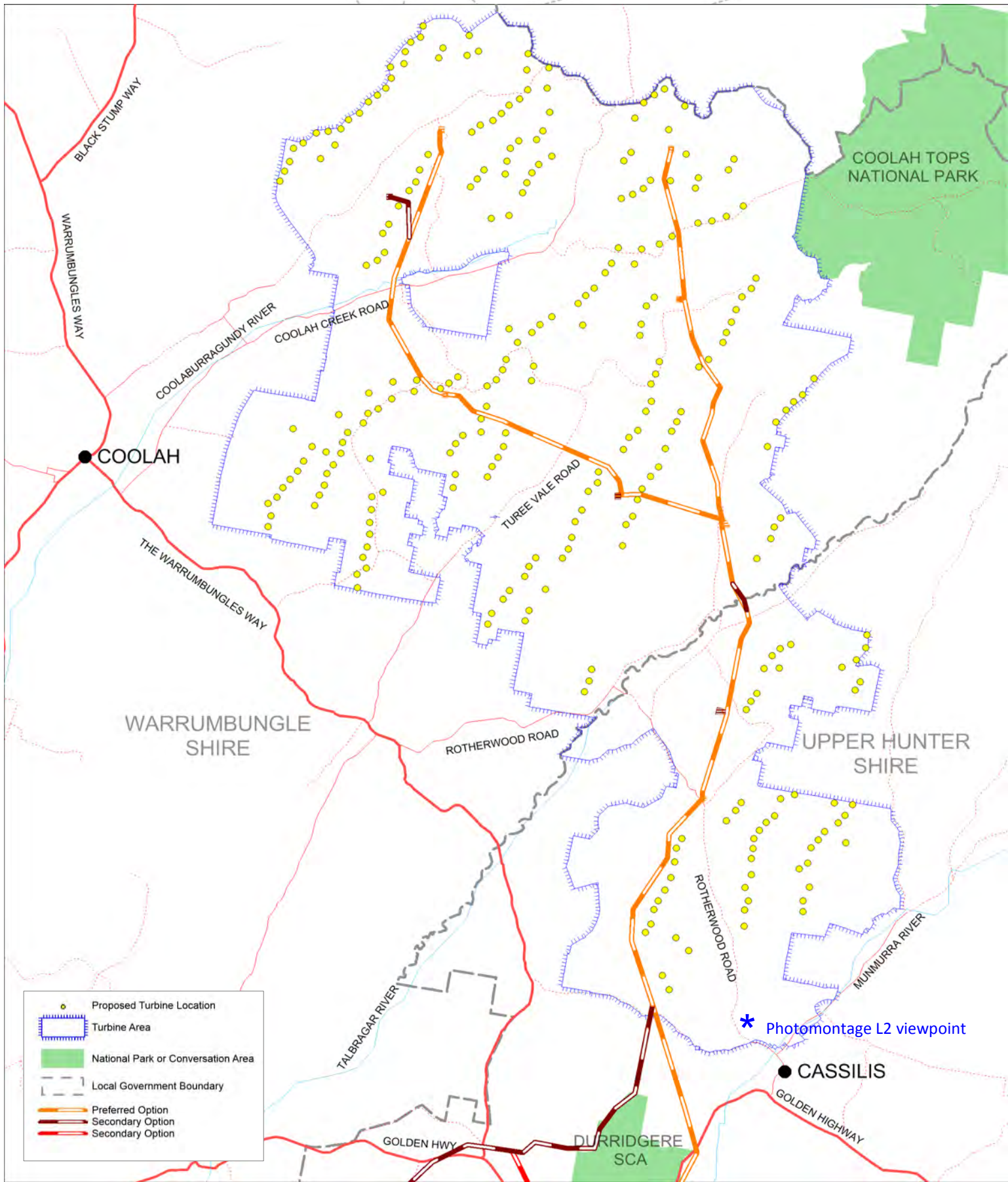
July 16, 2015

**Contact us: Hugh Sangster Project Manager 0438 803367
Donna Bolton Lands Manager 0405 535325**

By letter:
Liverpool Range Wind Farm
Level 11, 75 Miller Street
North Sydney NSW 2060

Email or Internet:
 info@epuron.com.au
www.epuron.com.au

By phone:
 02 8456 7400



Project Update

The Liverpool Range Wind Farm Environmental Impact Statement (EIS) was on public exhibition from 1 August to 1 October 2014, resulting in 43 submissions from the public and government agencies. Since then Epuron has proposed changes to the wind farm layout (see overleaf) and has consulted landowners.

Key changes to the layout include the simplification of the overhead powerline across the wind farm site and amendments to the powerline route to the south of the site to further reduce impacts. Additional seasonal environmental survey work is underway across the site and powerline route to assess these changes.

A more detailed Traffic and Transport Study will also be undertaken to assess the impact on the local road network and identify areas that will require upgrades prior to construction commencing.

As a result of interest expressed at the September 2015 meeting of the Community Consultation Committee (CCC), a sub-committee of the CCC conducted a survey of experiences from six operating wind farms in NSW which have community enhancement funds (CEFs). At its 11th meeting on 21 September 2016 the CCC considered the survey report. A copy will be posted on Epuron's website, for information.

FAQs during Consultation

Questions that have come up during recent consultation include:

Q: When will the project go back to the Dept. of Planning?

A: We are aiming to submit our Response to Submissions Report by the end of the year, pending the results of further studies and consultation.

Q: When will the wind farm project be determined?

A: Once the report has been submitted, the Dept. of Planning will review all documentation and make a recommendation to the Planning Assessment Commission (PAC). The PAC will then make a determination. The PAC process could take between 3 – 6 months.

Q: How likely is it to be built?

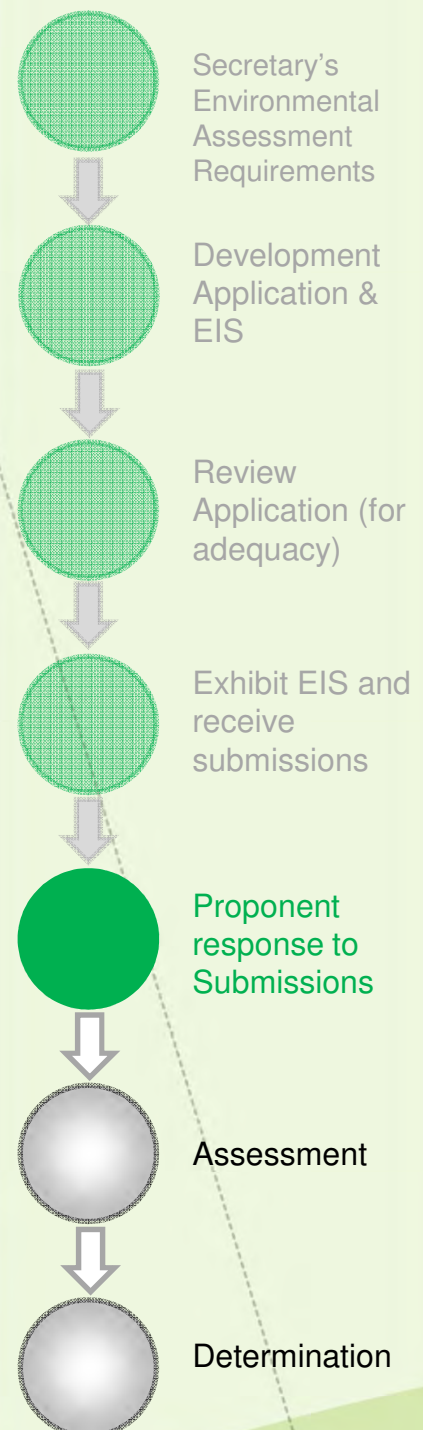
A: If the project receives approval it is very likely to be built. It has an excellent wind resource and is located close to a very strong part of the transmission network (between Wellington and Wollar).

Q: Road impacts? Community Enhancement Fund?

A: Please see overleaf.



NSW Planning Stages



Contact us: Julian Kasby Project Manager 0411 638651
Donna Bolton Lands Manager 0405 535325

By letter:
Epuron
Level 11, 75 Miller Street
North Sydney NSW 2060

Email or Internet:
info@epuron.com.au
www.epuron.com.au

By phone:
02 8456 7400

Community Enhancement Fund (CEF)

How will the communities impacted by the wind farm benefit from it?

The development application includes a commitment to establish a Community Enhancement Fund (CEF) and to make annual contributions to it. Grants will be made available from the CEF for projects that benefit the community near the wind farm.

In addition to funding the CEF, the wind farm company will also make annual payments to Warrumbungles and Upper Hunter Shire Councils for on-going road maintenance. These payments will be in addition to upgrading and repairing roads directly impacted by the construction of the wind farm.

The annual CEF and road contributions will be detailed in a voluntary planning agreement (VPA) between Epuron, Warrumbungles Shire Council and Upper Hunter Shire Council.

Taking into account presentations from both Warrumbungles and Upper Hunter Councils (July 2015), the results of the survey conducted by the CCC (see page 1) and recent discussion with the CCC members and councils, Epuron has developed the following proposed structure for the CEF.

Proposed CEF Structure

- One Community Enhancement Fund (CEF) developed under a VPA with Warrumbungles Shire Council and Upper Hunter Shire Council.
- CEF administered through a Local Government Act 1993 section 355 committee:
 - 2 community members (preferably residents within 20km who have not entered into financial agreements with the wind farm company) from each council area (total 4)
 - 1 Council officer from each area (total 2) (non-voting)
 - 1 Councillor from each area (total 2)
 - 1 wind farm company representative (non-voting)
- Committee to review and recommend grants to the two Councils. When both Councils approve the recommendations, the grants are made.
- Fund administration fees capped.
- Eligibility criteria for funding:
 - Incorporated or registered not-for-profit organisation
 - Degree of benefit within an area approximately 20km from an installed wind turbine, or within 5km of the new powerline near Turill.

Feedback:

We would like to hear what you think about the proposed structure for the Community Enhancement Fund. Please let us know by any of the following ways:



Leading the Way:

Australian State
Renewable Energy Targets

ACT: 100%
by 2020

South Australia: 50%
by 2025

Victoria: 40%
by 2025

Queensland: 50%
by 2030 &
1 million homes with
rooftop solar
(proposed)

NSW:
Committed to Federal
RET of 20% by 2020

Western Australia:
Committed to Federal
RET of 20% by 2020



By letter:

Epuron - LRWF
Level 11, 75 Miller Street
North Sydney NSW 2060



Email or Internet:

info@epuron.com.au
www.epuron.com.au



By phone:

02 8456 7400



Wind Farm Photomontage L10 – from Warrumbungles Way near Coolah, looking East. 6km to nearest turbine

NSW Draft Wind Farm Guidelines

What are they and what do they mean?

In August, the Department of Planning released a Draft Wind Energy Planning Framework. The aim of the framework was to help balance investment with the needs of the community by encouraging early engagement from Proponents.

The Framework consists of six documents including:

- An Assessment Policy
- A Noise Assessment Bulletin
- A Visual Assessment Bulletin
- Environmental Assessment Requirements
- A review of impacts to Property Values by Urbis
- Frequently Asked Questions

The Framework documents can be viewed on the Department of Planning website.

<http://www.planning.nsw.gov.au/Policy-and-Legislation/Renewable-Energy>

Epuron provided a submission to the Dept. of Planning in response to the new framework. A summary of the key points is provided below:

- Epuron applauds the intent of providing final workable guidelines for the industry and community.
- NSW, with its high reliance on coal-fired power, has the most to gain from regional jobs and investment from adopting large scale renewable energy for a more diverse energy mix.
- The adoption of the cohesive South Australian EPA 2009 noise guidelines moves NSW towards a standardised assessment requirement.
- The Visual Bulletin creates uncertainty for community members, proponents and decision-makers alike.
- The Visual Bulletin places undue assessment value upon how a wind farm looks rather than on balancing impacts against benefits, purpose and function.

Gullen Range Wind Farm Open Day



Image from Gullen Range Wind Farm website:

<http://www.gullenrangewindfarm.com/community/community-open-day/>

Gullen Range Wind Farm (between Crookwell and Goulburn) will hold a Community Open Day in October and give people the opportunity to visit the largest operating wind farm in NSW.

Date: Sunday 16th October

Time: 11am to 3pm

Location: Storriers Lane, Bannister

*Parking will be limited on site so it is strongly recommended that you register for a spot.

