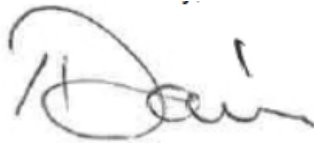


# Modification of Development Consent

Section 4.55(1A) of the *Environmental Planning and Assessment Act 1979*

As delegate of the Minister for Planning, I approve the modification of the development consent referred to in Schedule 1, subject to the conditions in Schedule 2.



Iwan Davies  
**A/Director**  
**Energy Assessments**

Sydney

23<sup>rd</sup> September 2022

---

## SCHEDULE 1

**Development consent:** SSD-6693 granted by the Planning Assessment Commission on 22 May 2017

**For the following:** Rye Park Wind Farm

**Modification:** **SSD-6693-Mod-2: Amendment to development corridor**

## SCHEDULE 2

1. In the table of DEFINITIONS, delete the definition for Department and replace with 'Department of Planning and Environment'
2. In the definition of EIS in the table of DEFINITIONS, after '15 January 2021', insert '  
  - Rye Park Wind Farm Modification 2 Report dated July 2022;
  - Rye Park Wind Farm Modification 2 Submissions Report dated September 2022'
3. In the table of DEFINITIONS, after the definition of 'Mitigation' insert the following definition:

Modification 2 Rye Park Wind Farm Modification 2 Report dated July 2022 and Rye Park Wind Farm Modification 2 Submissions Report dated September 2022

4. After Condition 21 of Schedule 3, insert the following condition:
  - 21A. Prior to the commencement of construction for works associated with Modification 2, the Applicant must retire biodiversity credits of a number and class specified in Table 1 and Table 2 below, unless the Planning Secretary agrees otherwise.  
 The retirement of these credits must be carried out in accordance with the *NSW Biodiversity Offsets Scheme* and can be achieved by:
    - (a) acquiring or retiring 'biodiversity credits' within the meaning of the *Biodiversity Conservation Act 2016*;
    - (b) making payments into an offset fund that has been established by the NSW Government; or
    - (c) funding a biodiversity conservation action that benefits the entity impacted and is listed in the ancillary rules of the biodiversity offset scheme.

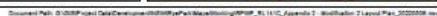
**Table 1: Ecosystem Credit Requirements**

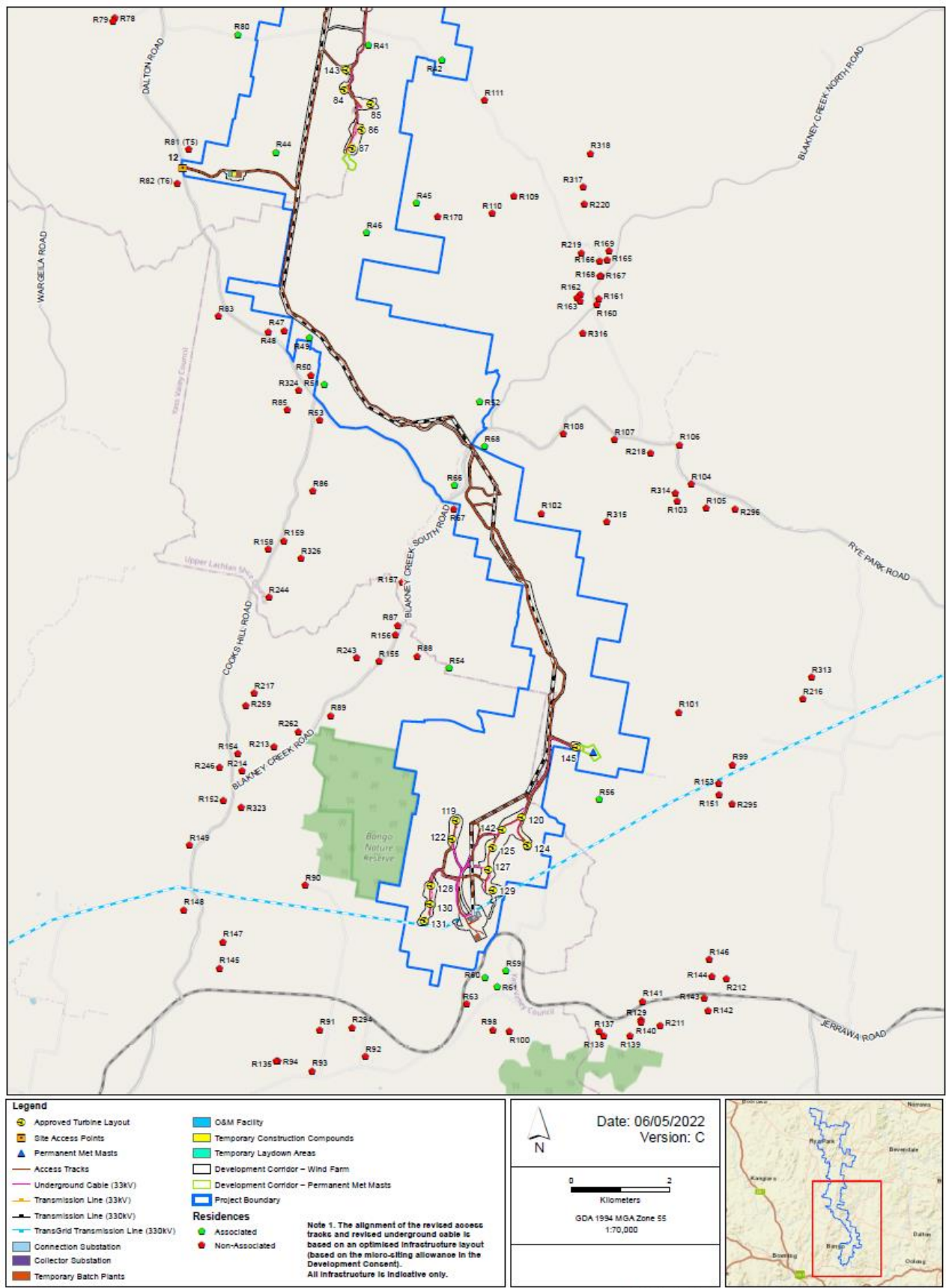
<b><i>Vegetation Community</i></b>	<b><i>PCT ID</i></b>	<b><i>Credits Required</i></b>
Tussock grass – sedgeland fen – rushland – reedland wetland in impeded creeks in valleys in the upper slopes sub-region of the NSW South Western Slopes Bioregion	335	11
Candlebark – Blakely's Red Gum – Long-leaved Box grassy woodland in the Rye Park to Yass region of NSW	350	8

**Table 2: Species Credit Requirements**

<b><i>Species Credit Species</i></b>	<b><i>Credits Required</i></b>
Superb parrot (breeding habitat) ( <i>Polytelis swainsonii</i> )	9
Squirrel glider ( <i>Petaurus norfolcensis</i> )	134

5. In Appendix 2, replace the figures with the following:





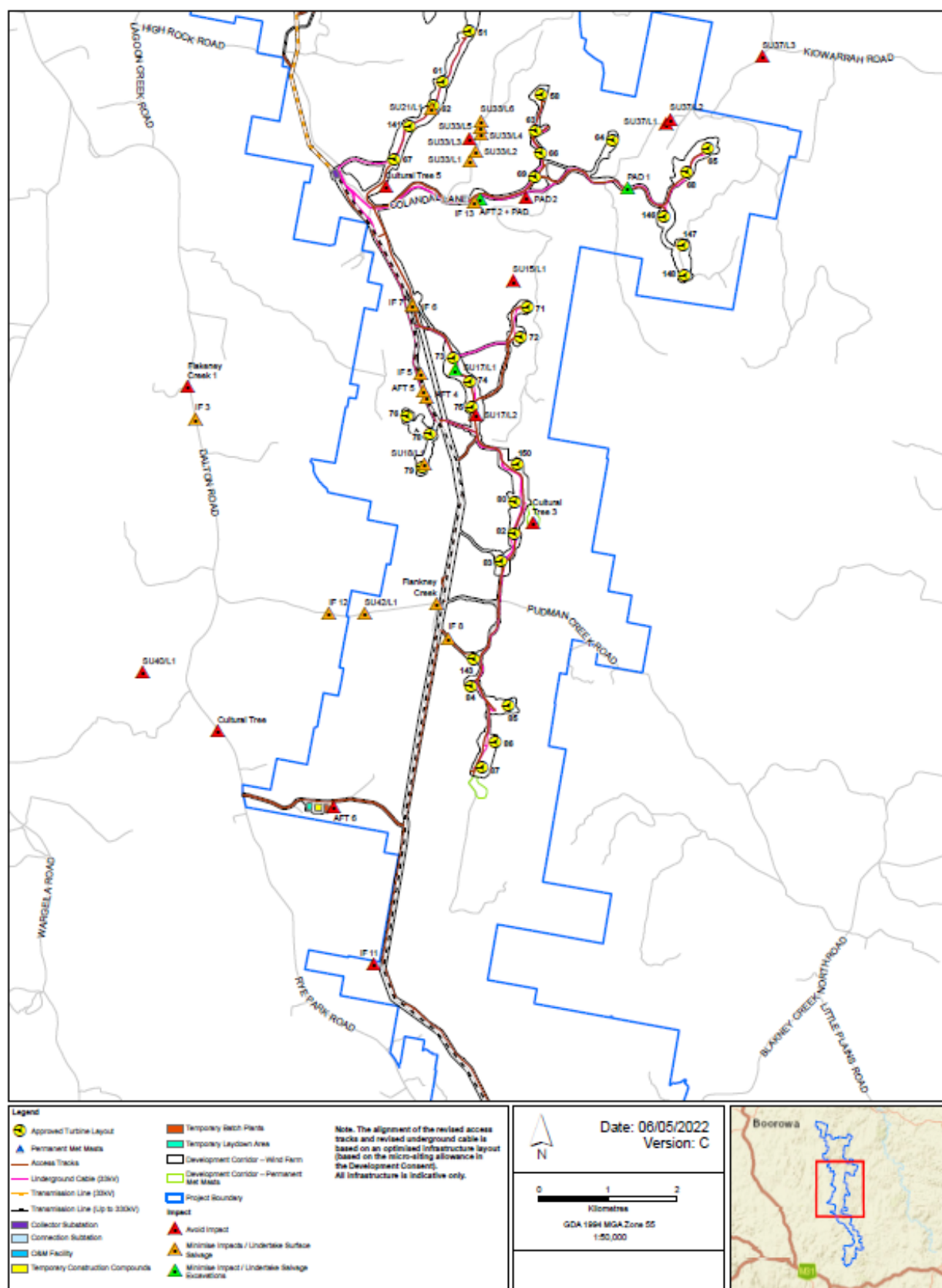
6. In Table 1 of Appendix 5, insert the following at the end of the table:

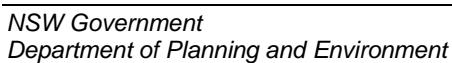
IF 20	51-4-0445
PAD 4	N/A

7. In Table 3 of Appendix 5, in the AHIMS No. for PAD 1 replace 'N/A' with '45-5-4051'.
8. In Appendix 5, replace the figure with the following:











9. In Appendix 6 Schedule of Road Upgrades, insert the following after the row for “Yass Street / Boorowa Rye Park Road Intersection”:

Walla Lane	-	-	Upgrade as necessary within road reserve to allow all weather access for heavy vehicles (if required).	Prior to commencing the use of Walla Lane for any heavy vehicle traffic associated with the construction of the development (if required)
------------	---	---	--	---

**End of modification  
(SSD-6693 MOD-2)**