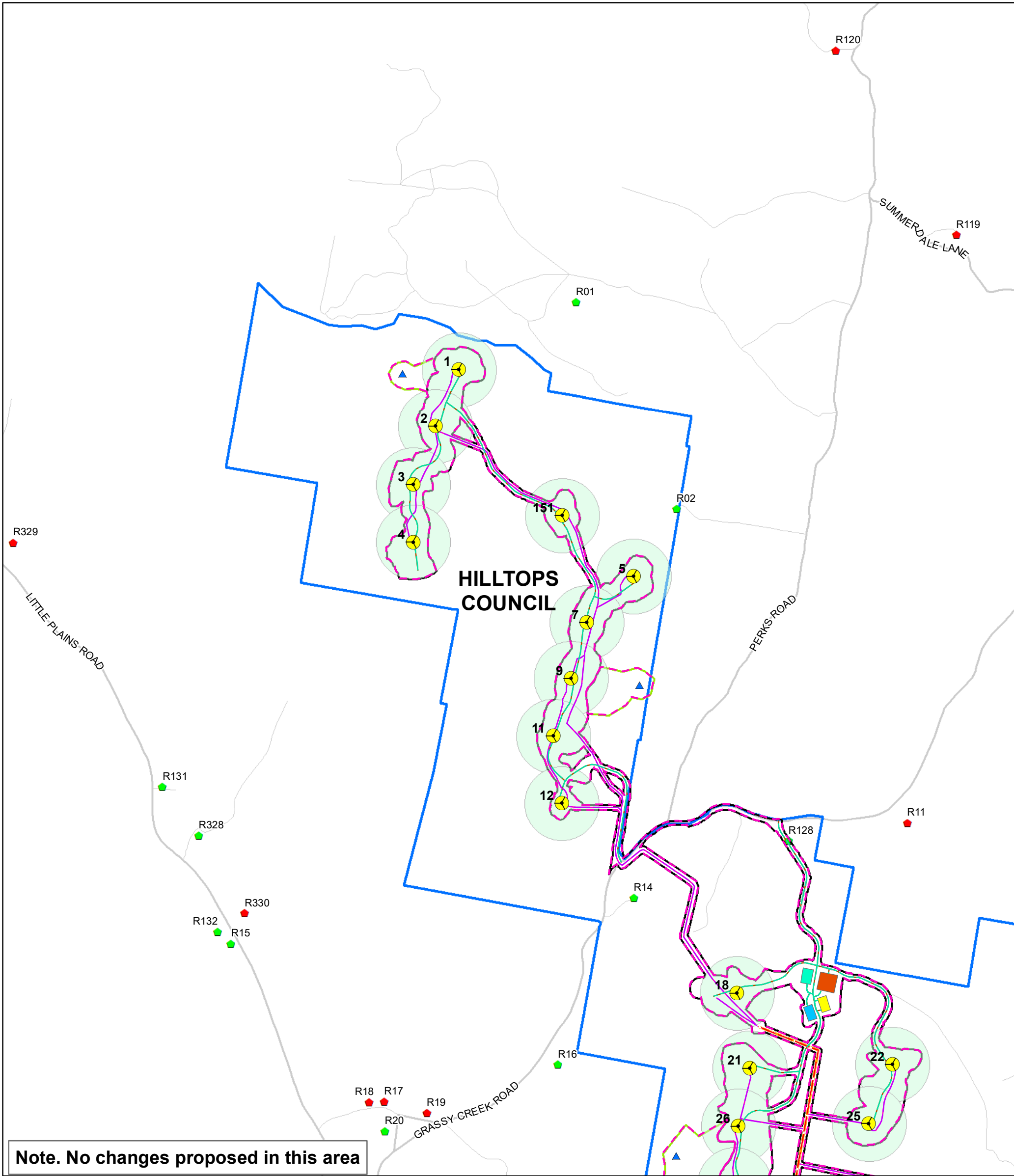


## Appendix B: Infrastructure Changes



**Final Modified Project**

- Modified Indicative Turbine Layout
- Permanent Met Masts
- Micro-siting Areas
- Modified Transmission Line (33kV)
- Modified Transmission Line (Up to 330kV)
- Modified Access Track
- Modified Underground Cable (33kV)
- Modified Collector Substation
- Modified Connection Substation
- Modified O&M Facility
- Modified Temporary Construction Compounds
- Modified Temporary Batch Plants
- Modified Temporary Laydown Area
- Modified Development Corridor – Wind Farm
- Development Corridor – Permanent Met Masts
- Modified Project Boundary

**Revised Final Modified Project**

- Revised Transmission Line (33kV)
- Revised Transmission Line (Up to 330kV)
- Revised Underground Cable (33kV)
- Revised Access Tracks
- Revised Development Corridor

**Residences**

- Associated
- Non-Associated
- Local Government Area
- Transgrid Transmission Line (330kV)

**Note 1.** The alignment of the revised access tracks and revised underground cable is based on an optimised infrastructure layout (based on the micro-siting allowance in the Development Consent). All infrastructure is indicative only.

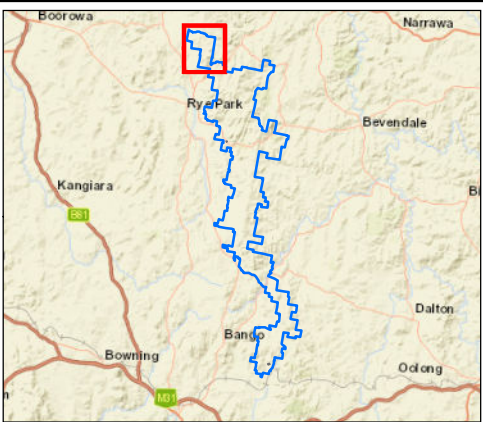
**Note 2.** The development corridor includes allowance for the underground cabling and access tracks (in addition to the infrastructure shown).

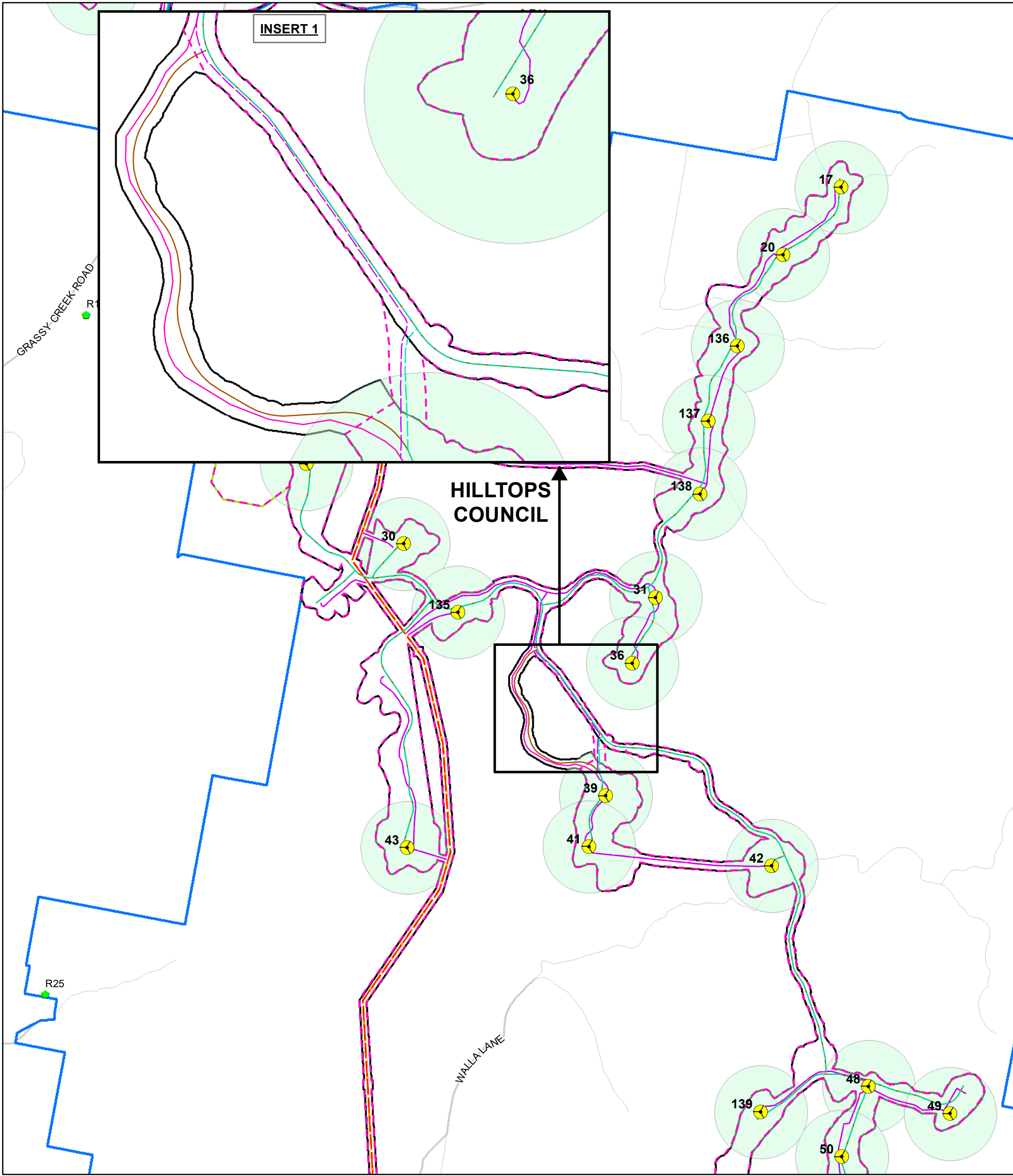
**Note 3.** The Project Boundary is based on publicly available cadastre and during detailed design will be updated for the actual property boundaries and road reserves.

N

Date: 18/03/2021  
Version: C

0 0.25 0.5  
Kilometres  
GDA 1994 MGA Zone 55  
1:25,000





**Final Modified Project**

- Modified Indicative Turbine Layout
- Permanent Met Masts
- Micro-siting Areas
- Modified Transmission Line (33kV)
- Modified Transmission Line (Up to 330kV)
- Modified Access Track
- Modified Underground Cable (33kV)
- Modified Collector Substation
- Modified Connection Substation
- Modified O&M Facility
- Modified Temporary Construction Compounds
- Modified Temporary Batch Plants
- Modified Temporary Laydown Area
- Modified Development Corridor – Wind Farm
- Development Corridor – Permanent Met Masts
- Modified Project Boundary

**Revised Final Modified Project**

- Revised Transmission Line (33kV)
- Revised Transmission Line (Up to 330kV)
- Revised Underground Cable (33kV)
- Revised Access Tracks
- Revised Development Corridor

**Residences**

- Associated
- Non-Associated
- Local Government Area
- Transgrid Transmission Line (330kV)

**Note 1.** The alignment of the revised access tracks and revised underground cable is based on an optimised infrastructure layout (based on the micro-siting allowance in the Development Consent). All infrastructure is indicative only.

**Note 2.** The development corridor includes allowance for the underground cabling and access tracks (in addition to the infrastructure shown).

**Note 3.** The Project Boundary is based on publicly available cadastre and during detailed design will be updated for the actual property boundaries and road reserves.

North Arrow

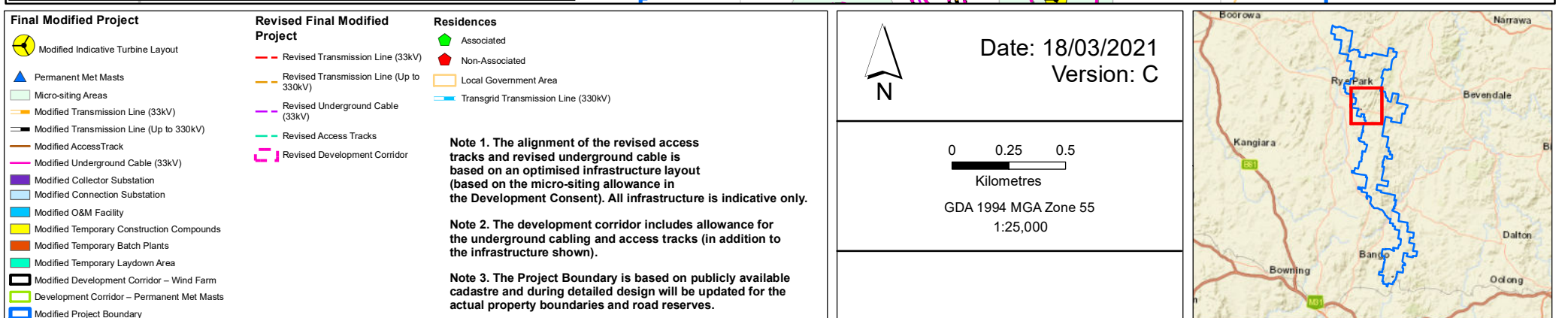
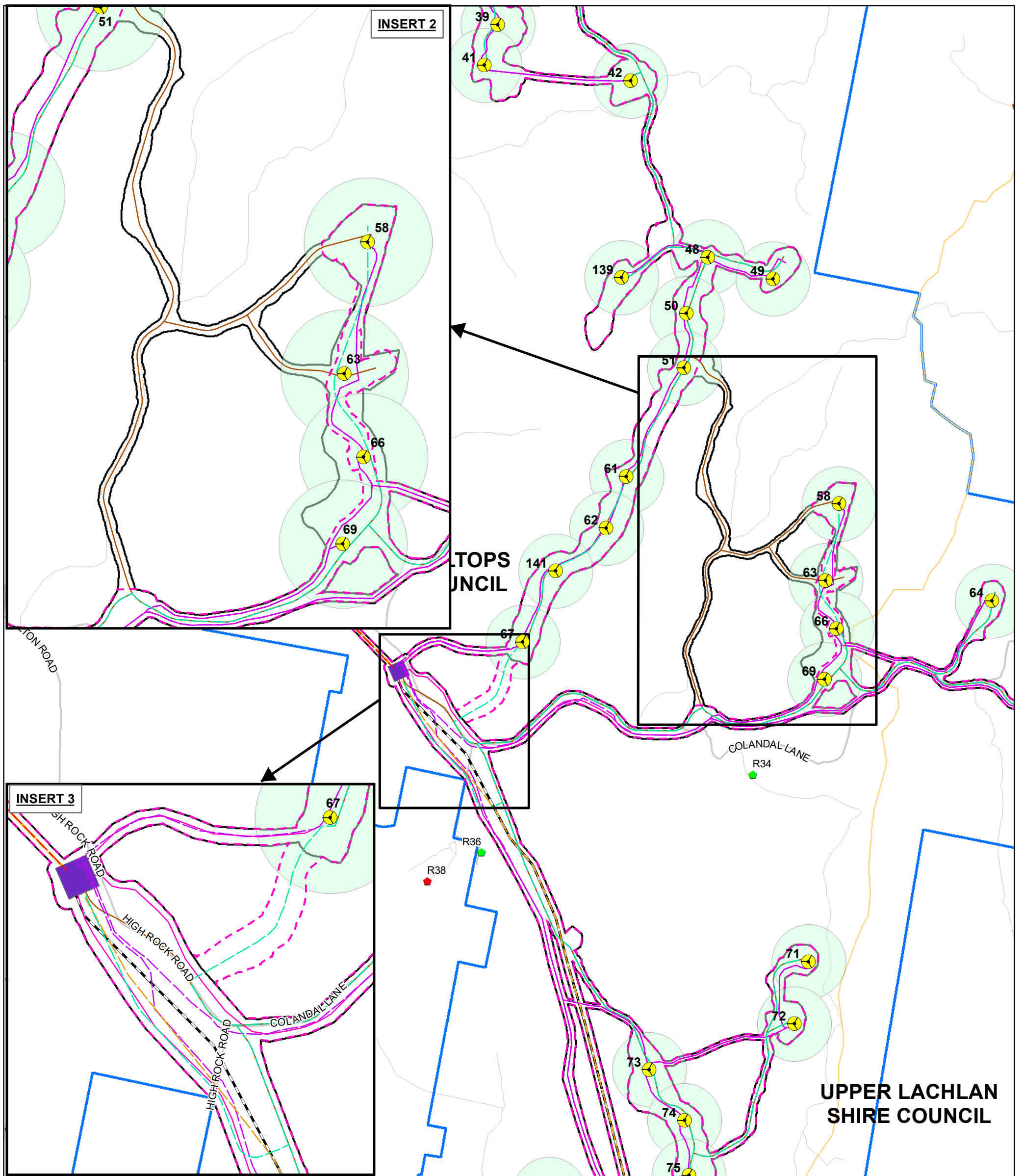
Date: 18/03/2021  
Version: C

0 0.25 0.5  
Kilometres  
GDA 1994 MGA Zone 55  
1:20,000

Document Path: G:\GIS\Project Data\Development\NSW\RyePark\Maps\Working\RPWF\_126C\_Infrastructure Changes\_Page 2\_20210312.mxd

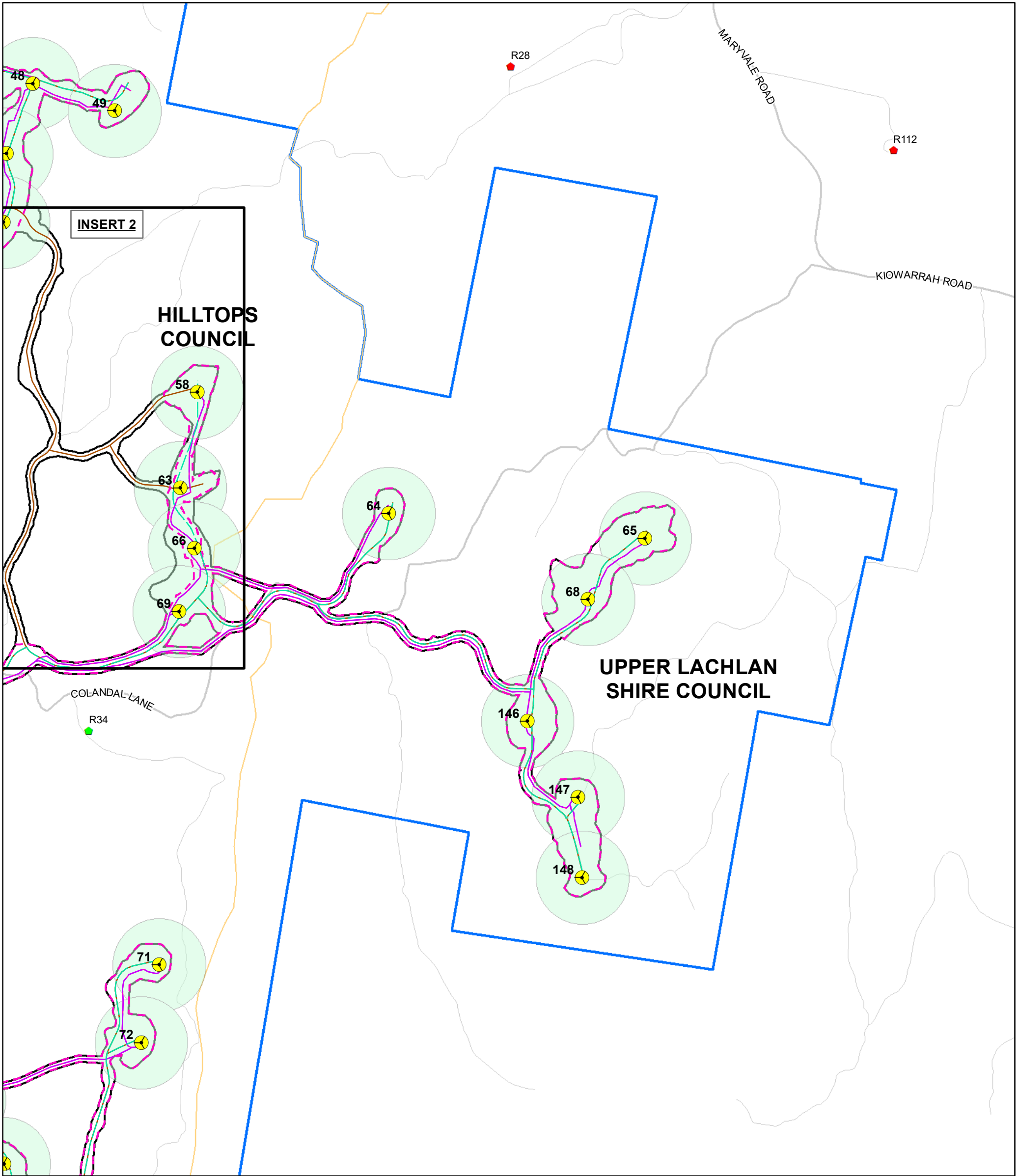






# Rye Park Wind Farm

## Infrastrucure Changes



**Final Modified Project**

- Modified Indicative Turbine Layout
- Permanent Met Masts
- Micro-siting Areas
- Modified Transmission Line (33kV)
- Modified Transmission Line (Up to 330kV)
- Modified Access Track
- Modified Underground Cable (33kV)
- Modified Collector Substation
- Modified Connection Substation
- Modified O&M Facility
- Modified Temporary Construction Compounds
- Modified Temporary Batch Plants
- Modified Temporary Laydown Area
- Modified Development Corridor – Wind Farm
- Development Corridor – Permanent Met Masts
- Modified Project Boundary

**Revised Final Modified Project**

- Revised Transmission Line (33kV)
- Revised Transmission Line (Up to 330kV)
- Revised Underground Cable (33kV)
- Revised Access Tracks
- Revised Development Corridor

**Residences**

- Associated
- Non-Associated
- Local Government Area
- Transgrid Transmission Line (330kV)

**Note 1.** The alignment of the revised access tracks and revised underground cable is based on an optimised infrastructure layout (based on the micro-siting allowance in the Development Consent). All infrastructure is indicative only.

**Note 2.** The development corridor includes allowance for the underground cabling and access tracks (in addition to the infrastructure shown).

**Note 3.** The Project Boundary is based on publicly available cadastre and during detailed design will be updated for the actual property boundaries and road reserves.

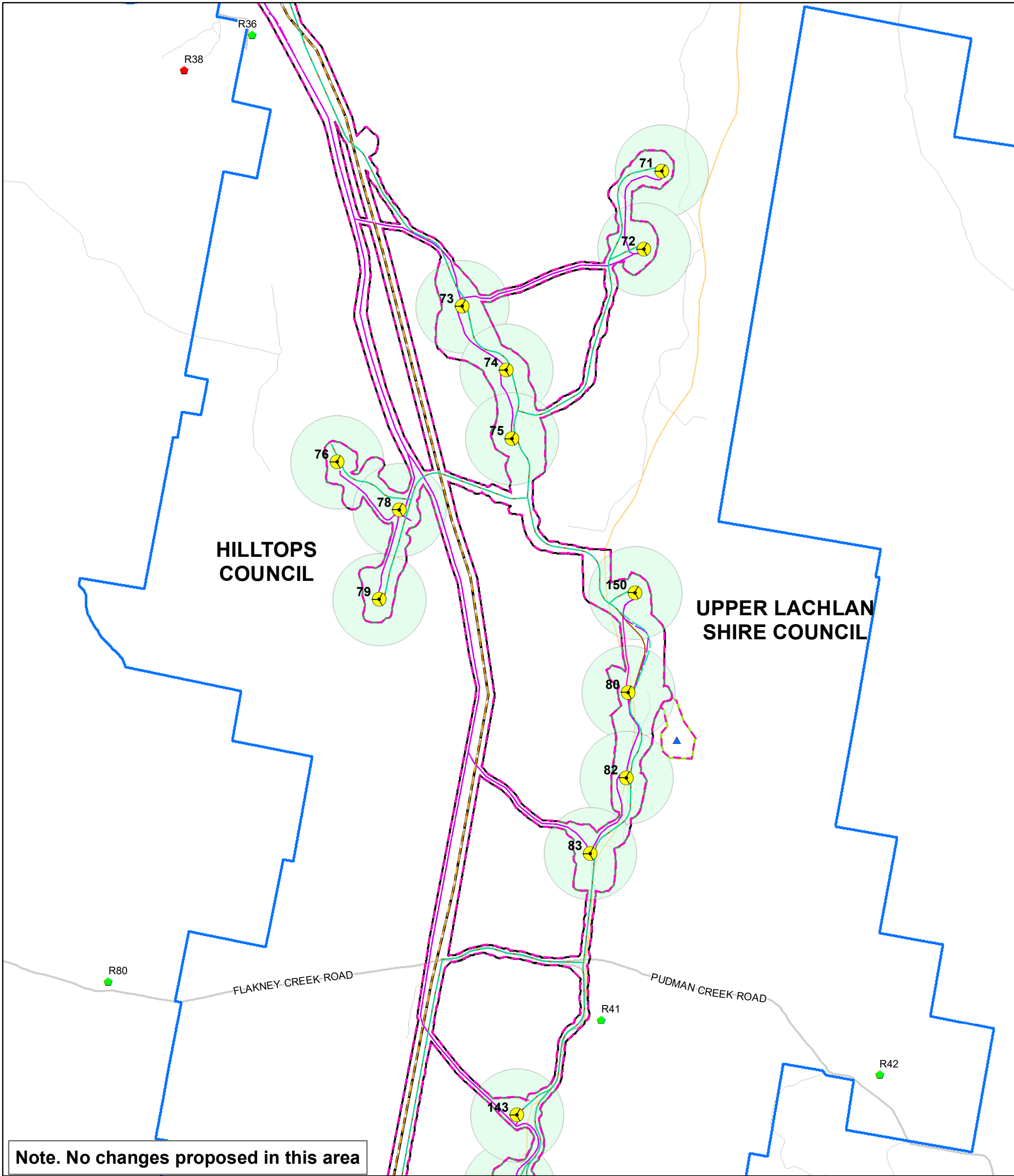
**Date:** 18/03/2021  
**Version:** C

0 0.25 0.5  
Kilometres  
GDA 1994 MGA Zone 55  
1:20,000

Document Path: G:\GIS\Project Data\Development\NSW\Rye Park\Maps\Working\RPWF\_126C\_Infrastructure Changes\_Page 4\_20210312.mxd







**Final Modified Project**

- Modified Indicative Turbine Layout
- Permanent Met Masts
- Micro-siting Areas
- Modified Transmission Line (33kV)
- Modified Transmission Line (Up to 330kV)
- Modified Access Track
- Modified Underground Cable (33kV)
- Modified Collector Substation
- Modified Connection Substation
- Modified O&M Facility
- Modified Temporary Construction Compounds
- Modified Temporary Batch Plants
- Modified Temporary Laydown Area
- Modified Development Corridor – Wind Farm
- Development Corridor – Permanent Met Masts
- Modified Project Boundary

**Revised Final Modified Project**

- Revised Transmission Line (33kV)
- Revised Transmission Line (Up to 330kV)
- Revised Underground Cable (33kV)
- Revised Access Tracks
- Revised Development Corridor

**Residences**

- Associated
- Non-Associated
- Local Government Area
- Transgrid Transmission Line (330kV)

**Note 1.** The alignment of the revised access tracks and revised underground cable is based on an optimised infrastructure layout (based on the micro-siting allowance in the Development Consent). All infrastructure is indicative only.

**Note 2.** The development corridor includes allowance for the underground cabling and access tracks (in addition to the infrastructure shown).

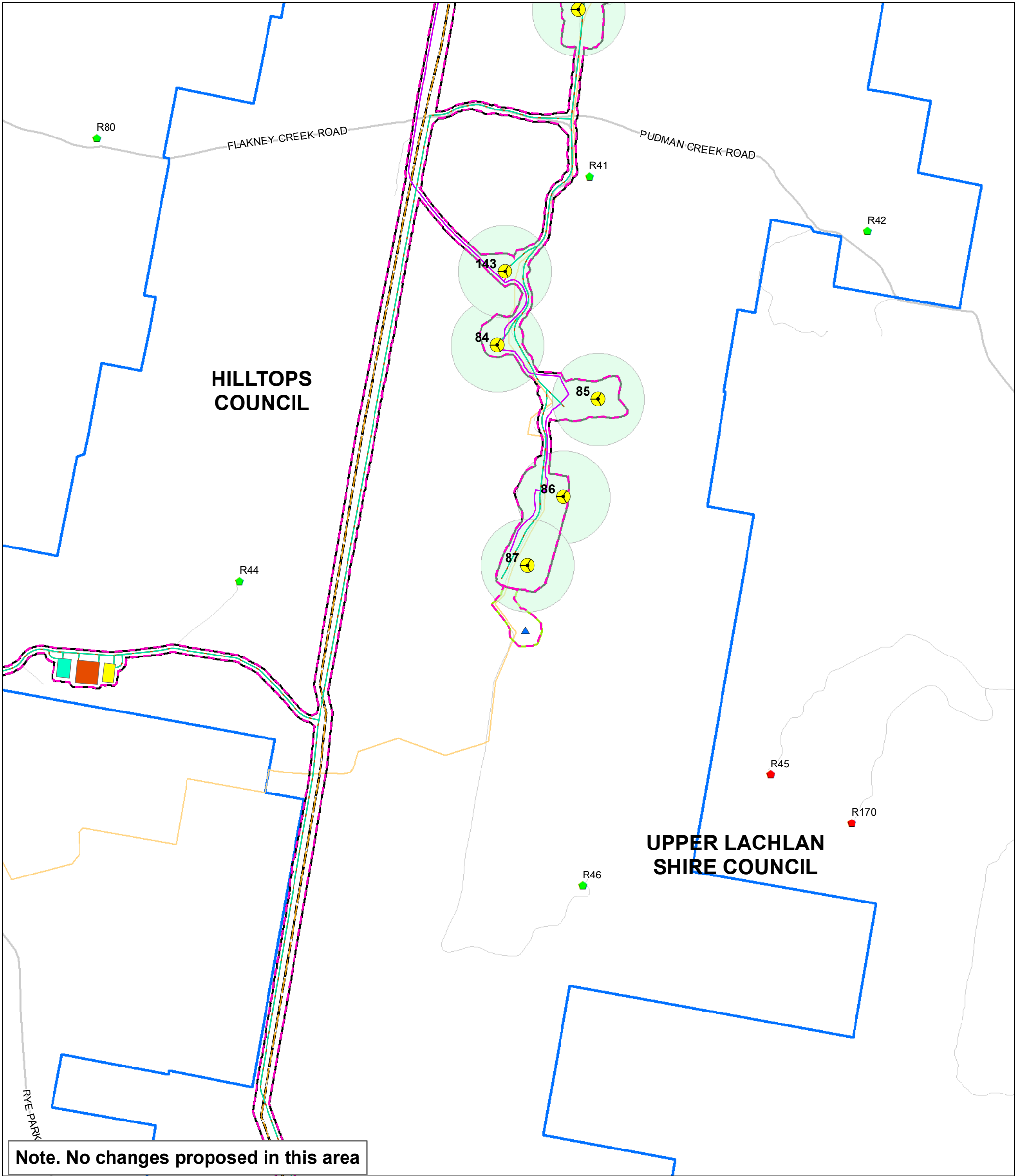
**Note 3.** The Project Boundary is based on publicly available cadastre and during detailed design will be updated for the actual property boundaries and road reserves.

**Date: 18/03/2021**  
**Version: C**

0 0.25 0.5  
Kilometres  
GDA 1994 MGA Zone 55  
1:20,000

Document Path: G:\GIS\Project Data\Development\NSWRyePark\Maps\Working\RPWF\_126C\_Infrastructure Changes\_20210313.mxd





**Final Modified Project**

- Modified Indicative Turbine Layout
- Permanent Met Masts
- Micro-siting Areas
- Modified Transmission Line (33kV)
- Modified Transmission Line (Up to 330kV)
- Modified Access Track
- Modified Underground Cable (33kV)
- Modified Collector Substation
- Modified Connection Substation
- Modified O&M Facility
- Modified Temporary Construction Compounds
- Modified Temporary Batch Plants
- Modified Temporary Laydown Area
- Modified Development Corridor – Wind Farm
- Development Corridor – Permanent Met Masts
- Modified Project Boundary

**Revised Final Modified Project**

- Revised Transmission Line (33kV)
- Revised Transmission Line (Up to 330kV)
- Revised Underground Cable (33kV)
- Revised Access Tracks
- Revised Development Corridor

**Residences**

- Associated
- Non-Associated
- Local Government Area
- Transgrid Transmission Line (330kV)

**Note 1.** The alignment of the revised access tracks and revised underground cable is based on an optimised infrastructure layout (based on the micro-siting allowance in the Development Consent). All infrastructure is indicative only.

**Note 2.** The development corridor includes allowance for the underground cabling and access tracks (in addition to the infrastructure shown).

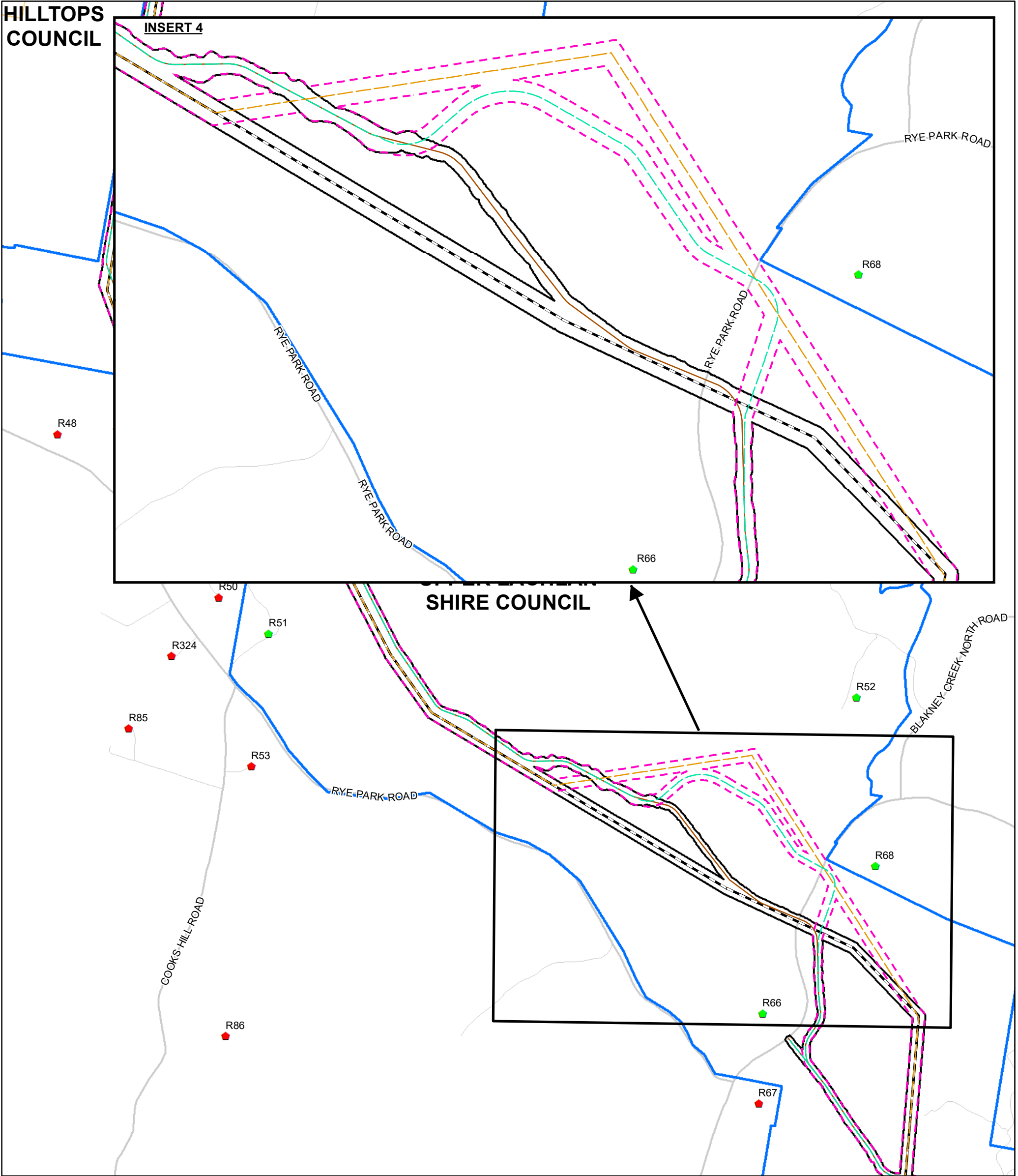
**Note 3.** The Project Boundary is based on publicly available cadastre and during detailed design will be updated for the actual property boundaries and road reserves.

**Date: 18/03/2021**  
**Version: C**

0 0.25 0.5  
Kilometres  
GDA 1994 MGA Zone 55  
1:20,000

Document Path: G:\GIS\Project Data\Development\NSW\RyePark\Maps\Working\RPWF\_126C\_Infrastructure Changes\_20210313.mxd



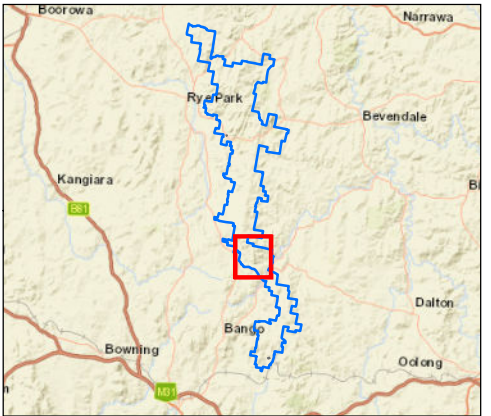
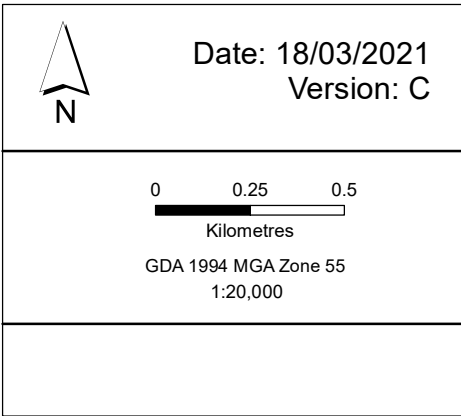


Final Modified Project	Revised Final Modified Project	Residences
Modified Indicative Turbine Layout	Revised Transmission Line (33kV)	Associated
Permanent Met Masts	Revised Transmission Line (Up to 330kV)	Non-Associated
Micro-siting Areas	Revised Underground Cable (33kV)	Local Government Area
Modified Transmission Line (33kV)	Revised Access Tracks	Transgrid Transmission Line (330kV)
Modified Transmission Line (Up to 330kV)	Revised Development Corridor	
Modified Access Track		
Modified Underground Cable (33kV)		
Modified Collector Substation		
Modified Connection Substation		
Modified O&M Facility		
Modified Temporary Construction Compounds		
Modified Temporary Batch Plants		
Modified Temporary Laydown Area		
Modified Development Corridor - Wind Farm		
Development Corridor - Permanent Met Masts		
Modified Project Boundary		

**Note 1.** The alignment of the revised access tracks and revised underground cable is based on an optimised infrastructure layout (based on the micro-siting allowance in the Development Consent). All infrastructure is indicative only.

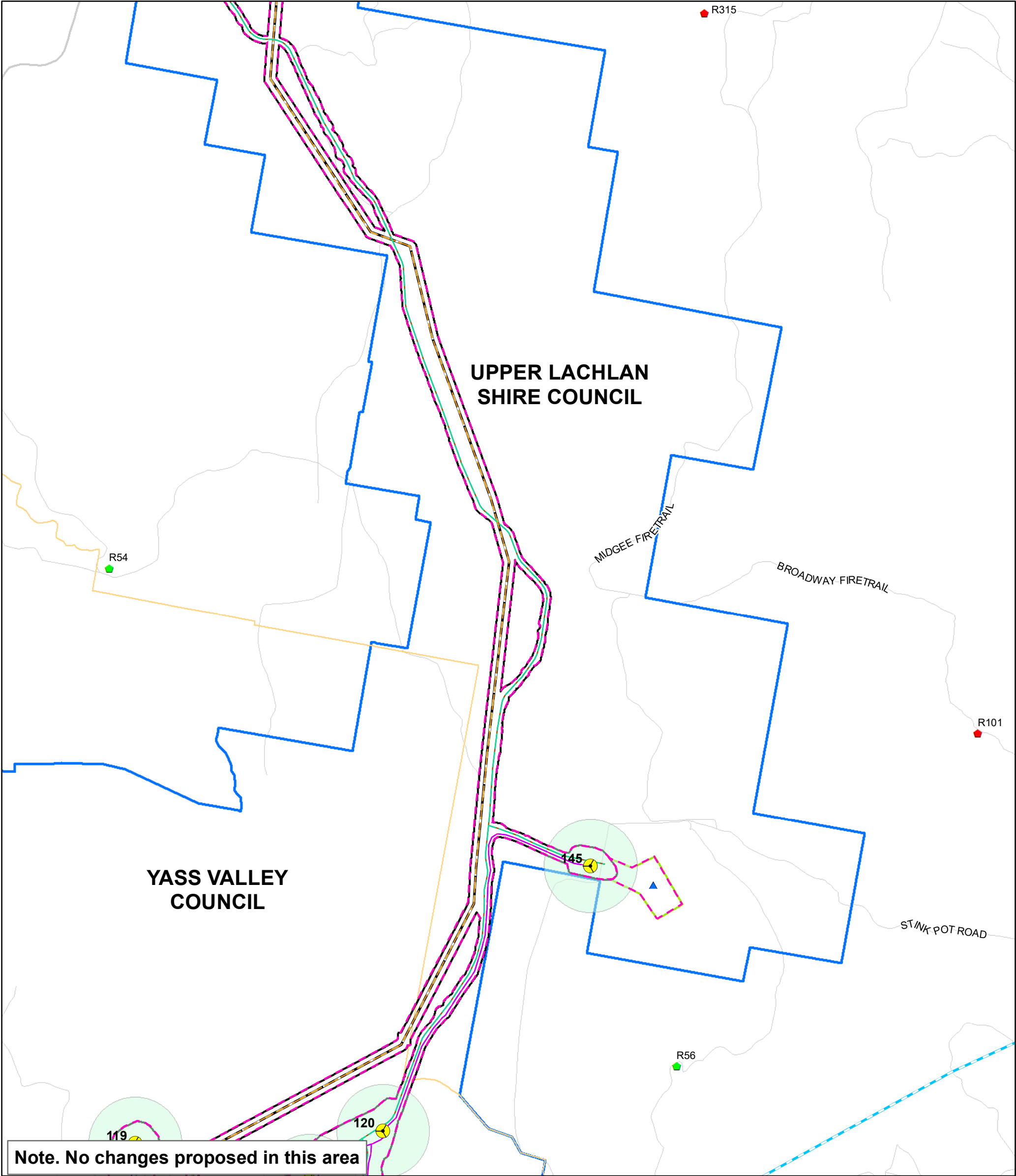
**Note 2.** The development corridor includes allowance for the underground cabling and access tracks (in addition to the infrastructure shown).

**Note 3.** The Project Boundary is based on publicly available cadastre and during detailed design will be updated for the actual property boundaries and road reserves.



Document Path: G:\GIS\Project Data\Development\NSW\RyePark\Maps\Working\RPWF\_126C\_Infrastructure Changes\_Page 7\_20210312.mxd





**Final Modified Project**

- Modified Indicative Turbine Layout
- Permanent Met Masts
- Micro-siting Areas
- Modified Transmission Line (33kV)
- Modified Transmission Line (Up to 330kV)
- Modified Access Track
- Modified Underground Cable (33kV)
- Modified Collector Substation
- Modified Connection Substation
- Modified O&M Facility
- Modified Temporary Construction Compounds
- Modified Temporary Batch Plants
- Modified Temporary Laydown Area
- Modified Development Corridor – Wind Farm
- Development Corridor – Permanent Met Masts
- Modified Project Boundary

**Revised Final Modified Project**

- Revised Transmission Line (33kV)
- Revised Transmission Line (Up to 330kV)
- Revised Underground Cable (33kV)
- Revised Access Tracks
- Revised Development Corridor

**Residences**

- Associated
- Non-Associated
- Local Government Area
- Transgrid Transmission Line (330kV)

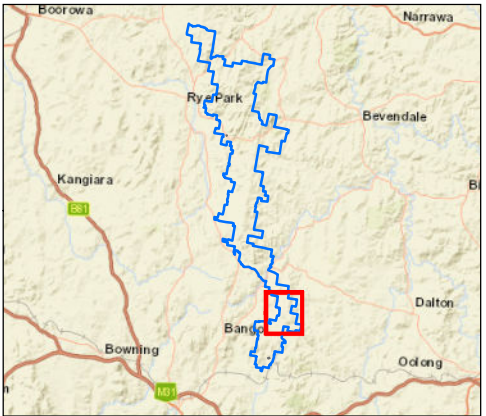
**Note 1.** The alignment of the revised access tracks and revised underground cable is based on an optimised infrastructure layout (based on the micro-siting allowance in the Development Consent). All infrastructure is indicative only.

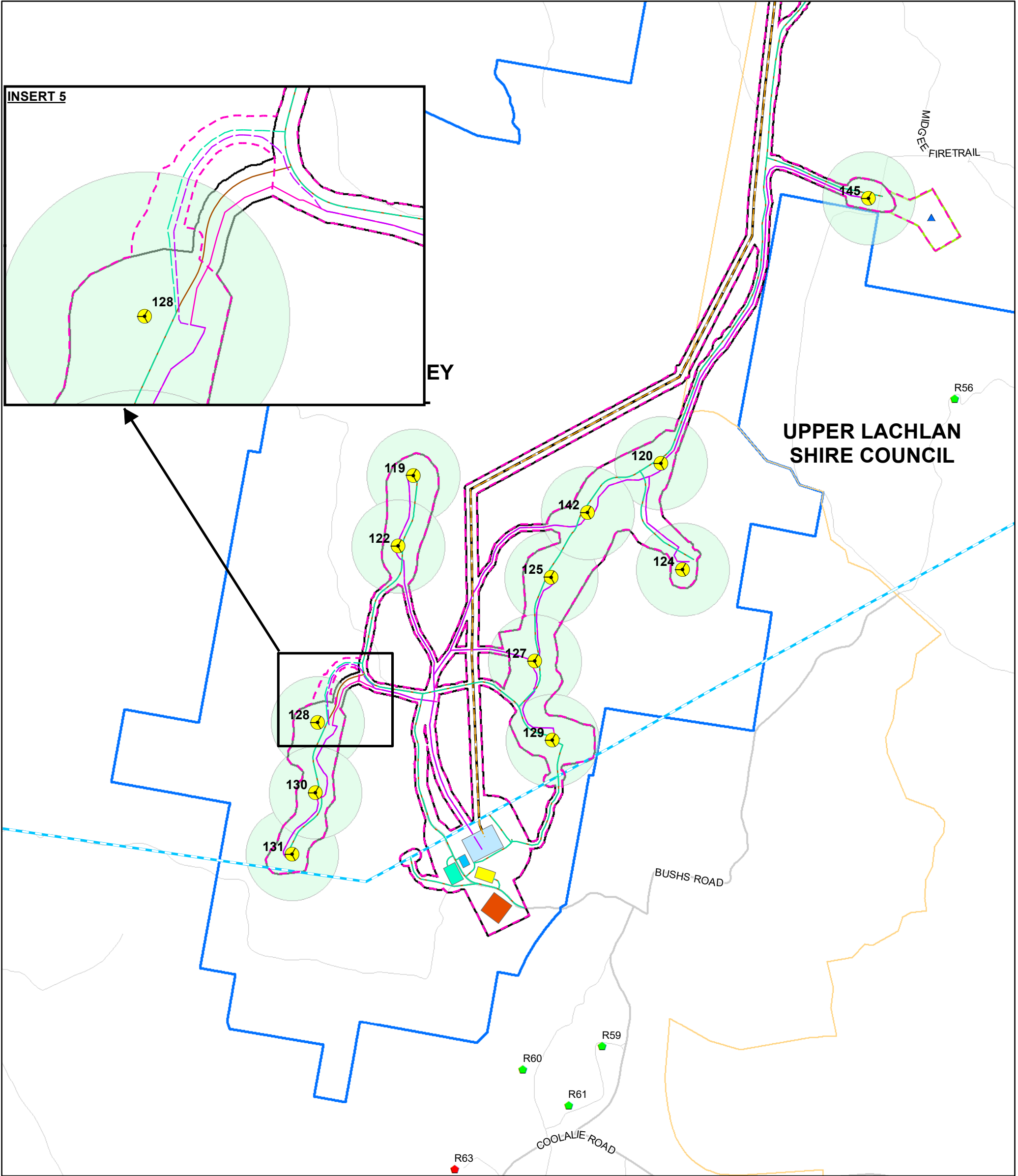
**Note 2.** The development corridor includes allowance for the underground cabling and access tracks (in addition to the infrastructure shown).

**Note 3.** The Project Boundary is based on publicly available cadastre and during detailed design will be updated for the actual property boundaries and road reserves.

Date: 18/03/2021  
Version: C

Kilometres  
GDA 1994 MGA Zone 55  
1:20,000





**Final Modified Project**

- Modified Indicative Turbine Layout
- Permanent Met Masts
- Micro-siting Areas
- Modified Transmission Line (33kV)
- Modified Transmission Line (Up to 330kV)
- Modified Access Track
- Modified Underground Cable (33kV)
- Modified Collector Substation
- Modified Connection Substation
- Modified O&M Facility
- Modified Temporary Construction Compounds
- Modified Temporary Batch Plants
- Modified Temporary Laydown Area
- Modified Development Corridor – Wind Farm
- Development Corridor – Permanent Met Masts
- Modified Project Boundary

**Revised Final Modified Project**

- Revised Transmission Line (33kV)
- Revised Transmission Line (Up to 330kV)
- Revised Underground Cable (33kV)
- Revised Access Tracks
- Revised Development Corridor

**Residences**

- Associated
- Non-Associated
- Local Government Area
- Transgrid Transmission Line (330kV)

**Note 1.** The alignment of the revised access tracks and revised underground cable is based on an optimised infrastructure layout (based on the micro-siting allowance in the Development Consent). All infrastructure is indicative only.

**Note 2.** The development corridor includes allowance for the underground cabling and access tracks (in addition to the infrastructure shown).

**Note 3.** The Project Boundary is based on publicly available cadastre and during detailed design will be updated for the actual property boundaries and road reserves.

Date: 18/03/2021  
Version: C

Kilometres  
GDA 1994 MGA Zone 55  
1:20,000

