

Appendix G: VIA Letter

Marita Giles, Senior Environment and Development Advisor
Tilt Renewables Pty Ltd
535 Bourke Street, Melbourne
VIC 3000

12 March 2021

Email issue: marita.giles@tiltrenewables.com

Dear Marita,

Rye Park Wind Farm March 21 Amendment - 330kV transmission line corridor amendment

Thank you for your email (2nd February 2021) and request to consider potential visual impacts associated with a proposed minor amendment to the Modification 1 330kV transmission line corridor.

Green Bean Design Pty Ltd (GBD) previously prepared an assessment of the Rye Park Wind Farm Modification 1 (Mod 1) – Amendment to the consented 33kV and 330kV transmission lines in October 2020.

Further to the Mod 1 assessment we understand that a minor amendment is proposed to the 330kV transmission line corridor (March 21 Amendment) as illustrated in the attached **Figure 1**. This figure illustrates:

- the consented 330kV transmission line (green dashed line)
- the Mod 1 330 kV transmission line (purple solid line)
- the March 21 330kV amended transmission line (orange solid line) and
- the March 21 330kV amended transmission line within the consented transmission line corridor (green solid line).

In accordance with the Mod 1 assessment, we understand that the March 21 amended 330kV transmission line will utilise a single pole arrangement as consented (the support structures do not include any metal lattice tower designs), and that the supporting structures will extend to around 45 metres above existing ground level.

The March 21 amended 330kV transmission line corridor would extend from west to east for around 1.1km from the Mod 1 corridor to the consented corridor as illustrated in **Figure 1**.

The March 21 amended 330kV transmission line corridor would require some tree clearing to create an easement through existing vegetation; however, tree clearing would also be required through the same discrete block of trees within the consented transmission line corridor.

The easement through existing tree vegetation would be largely screened from surrounding view locations (dwellings and traffic on the Dalton Rye Park Road) by localised undulating landform.

The March 21 amended 330kV transmission line corridor would then extend for around 1.7km in a north west to south east alignment along the consented transmission line corridor before joining the Mod 1 330kV transmission line as previously assessed.

The consented transmission line would extend around 246m from north west to south east of dwelling R68 as illustrated in **Figure 1**. We confirm that dwelling R68 is subject to a neighbour agreement for the transmission line.

Following our review, we confirm that the March 21 amended 330kV transmission line corridor would not result in any visual impacts in addition to those identified in the GBD Mod 1 Amendment to the consented 33kV and 330kV transmission lines, October 2020.

If you require any further information in relation to this review, then please do not hesitate to contact us.

Yours sincerely,



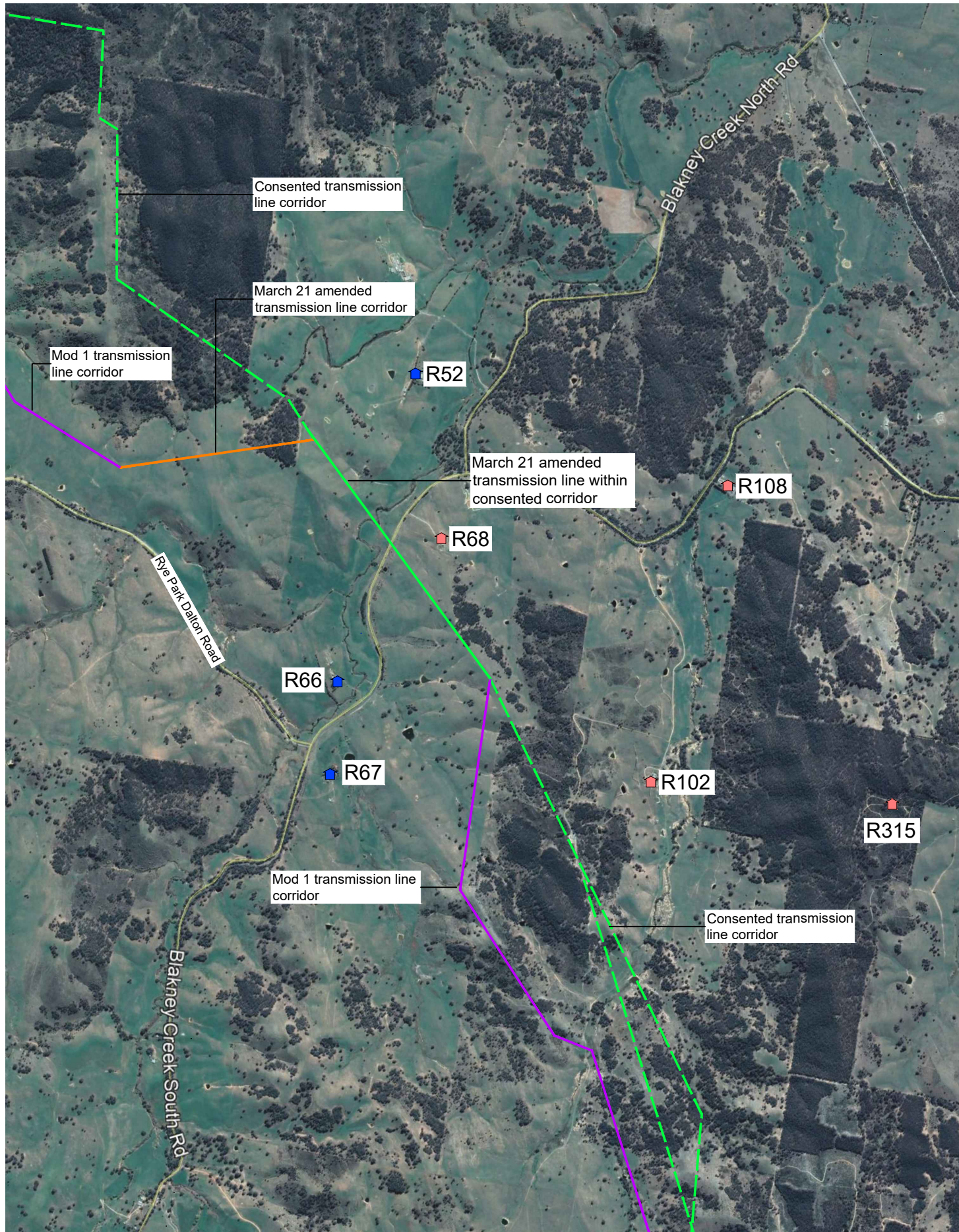
Registered Landscape Architect, AILA, MEIANZ

Green Bean Design Pty Ltd







ABN: 86 603 575 702

Principal: Andrew Homewood *Grad Dip LM, BSc (Dual Hons) Landscape Design and Archaeology, National Dip Hort.*

PO BOX 3178, AUSTRAL, NSW 2179



Legend

-  Associated residential dwelling (wind turbine and/or transmission line)
-  Non associated residential dwelling within 2km of transmission line
-  Consented 330kV transmission line route
-  Mod 1 330kV transmission line route
-  March 21 amended 330kV transmission line route
-  March 21 amended 330kV transmission line route within consented corridor

0km 500m



Figure 1
Consented, Mod 1 and March 21
amended 330kV transmission line
corridors