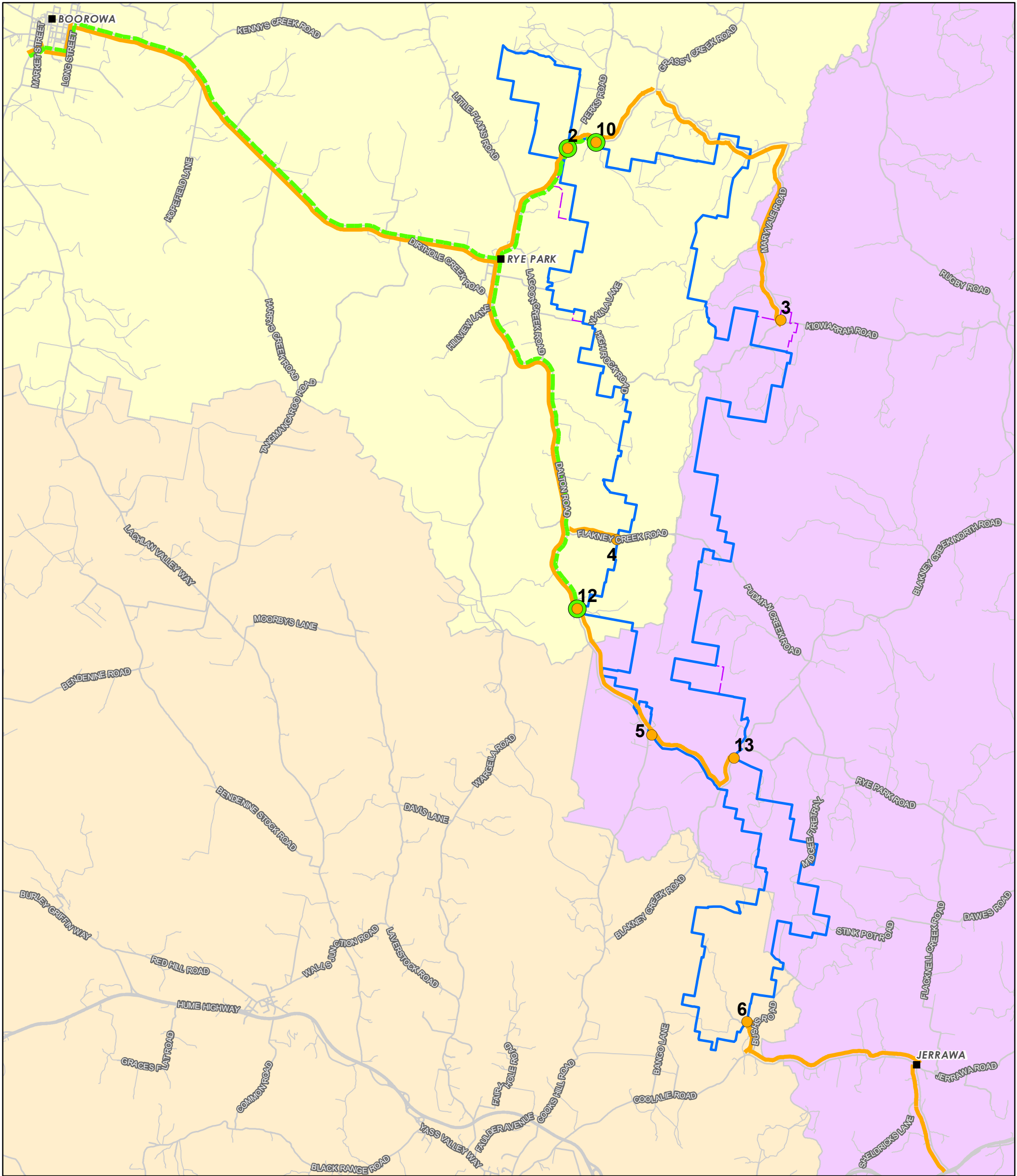


C.5 OVER-DIMENSIONAL AND HEAVY VEHICLE ACCESS ROUTES



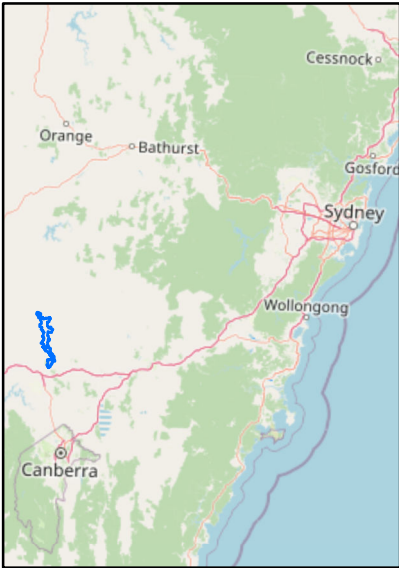
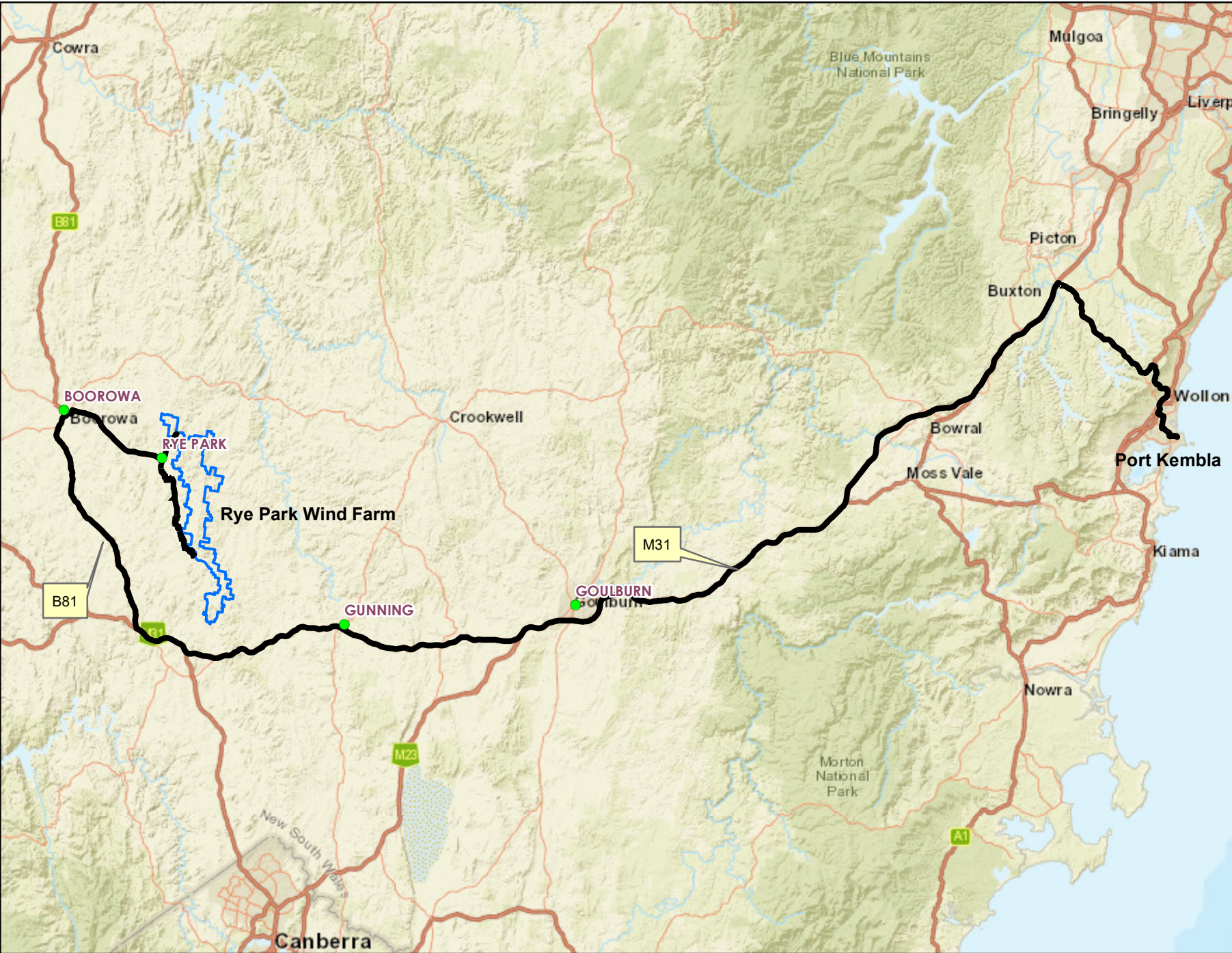
<ul style="list-style-type: none">Approved Site Access PointsPreferred Site Access PointsTownsApproved Transport RoutesPreferred Transport RouteProject BoundaryApproved Project Boundary	Local Government Area <ul style="list-style-type: none">YASS VALLEY COUNCILUPPER LACHLAN SHIRE COUNCILHILLTOPS COUNCIL	<div></div> <div>Date: 31/03/2020 Version: A</div> <div> Kilometres GDA 1994 MGA Zone 55 1:140,000</div>	
---	---	--	--

Document Path: G:\GIS\Development_Sites\NSW\RyePark\Maps\Working\RPWF_130_Over-dimensional and Heavy Vehicle Access_20200331.mxd

Rye Park Wind Farm

Over-dimensional and Heavy Vehicle Access

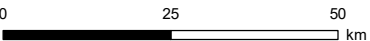




Legend
Route - Port Kembla to Rye Park Wind Farm
Project Boundary

Date: 09/04/2020

GDA 1994 MGA Zone 55
1:1,130,000

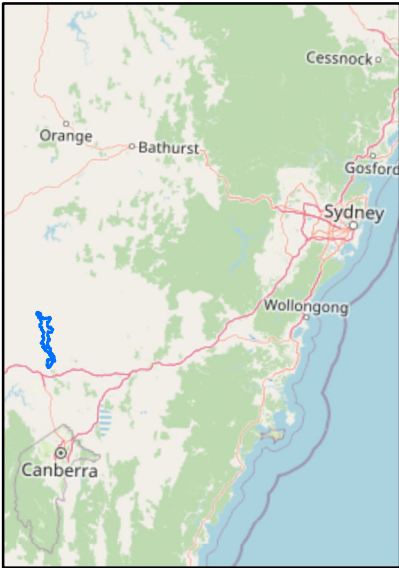


Document Path: G:\GIS\Development_Sites\NSWRyeParkMap\Working\RPWF_113B_Route - Port Kembla to Rye Park Wind Farm_20200409.mxd

Rye Park Wind Farm - Over-Dimensional and Heavy Vehicle Access Route Options

Route - Port Kembla to Rye Park Wind Farm

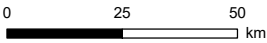




- Legend**
- Route - Newcastle to Rye Park Wind Farm
 - Project Boundary

Date: 09/04/2020

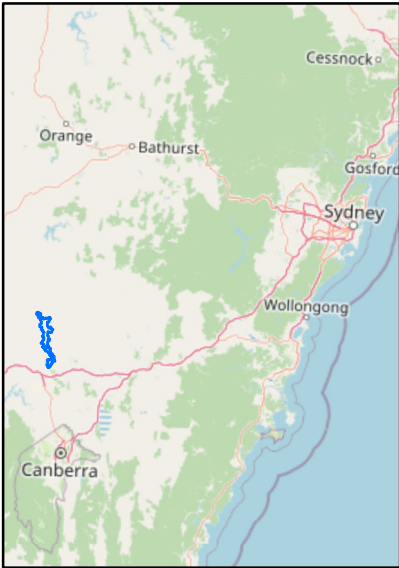
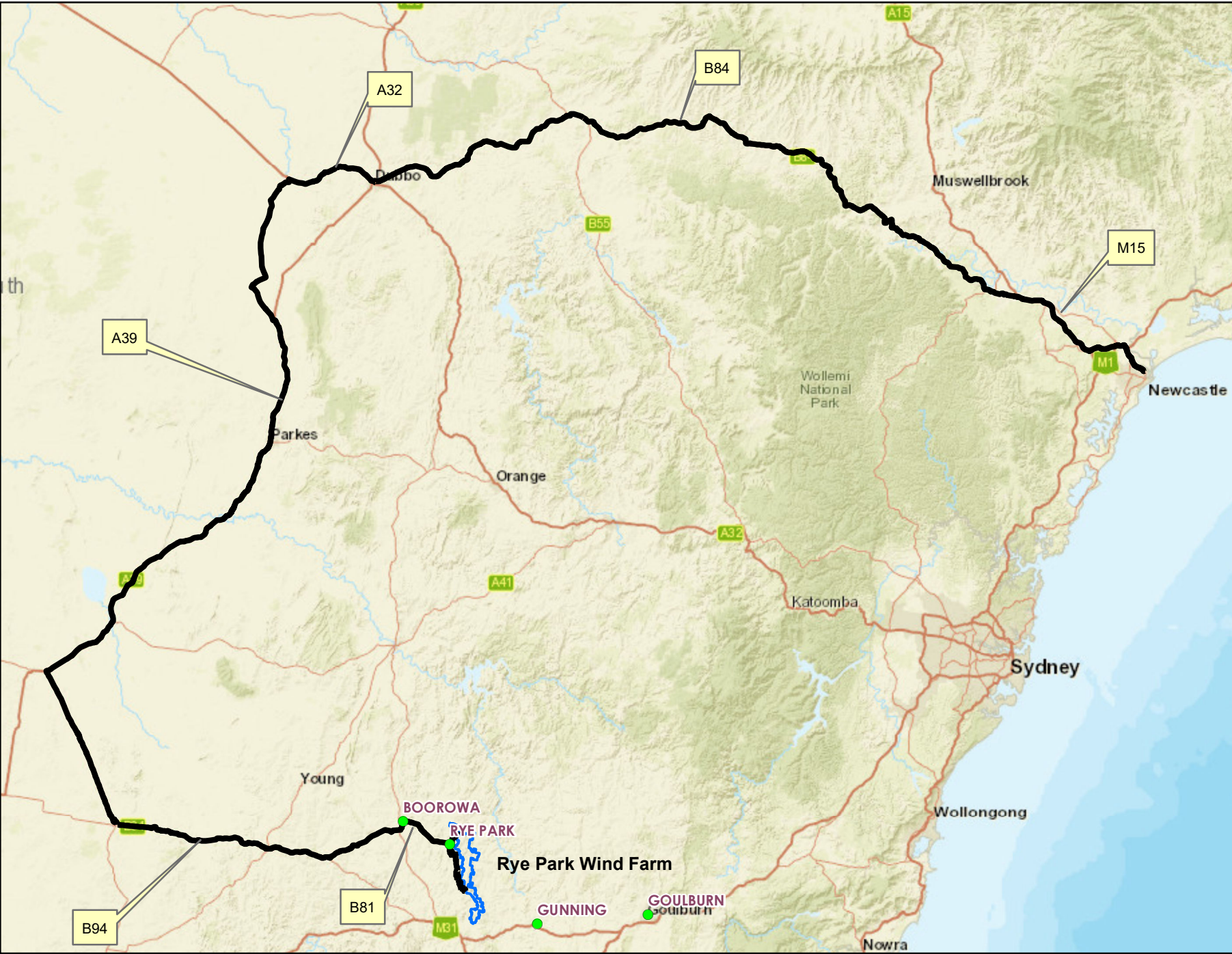
GDA 1994 MGA Zone 55
1:1,640,000



Document Path: G:\GIS\Development_Sites\NSW\RyePark\Maps\Working\RPWF_121B_Route - Newcastle to Rye Park Wind Farm (509km)_20200409.mxd

Rye Park Wind Farm - Over-Dimensional and Heavy Vehicle Access Route Options
Route - Newcastle to Rye Park Wind Farm (via Gunning) (509km)

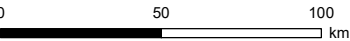




- Legend**
- Route - Newcastle to Rye Park Wind Farm
 - Project Boundary

Date: 09/04/2020

GDA 1994 MGA Zone 55
1:2,360,000



Document Path: G:\GIS\Development_Sites\NSW\RyePark\Maps\Working\RPWF_122B_Route - Newcastle to Rye Park Wind Farm (927km)_20200409.mxd

Rye Park Wind Farm - Over-Dimensional and Heavy Vehicle Access Route Options
Route - Newcastle to Rye Park Wind Farm (via Dubbo) (927km)

