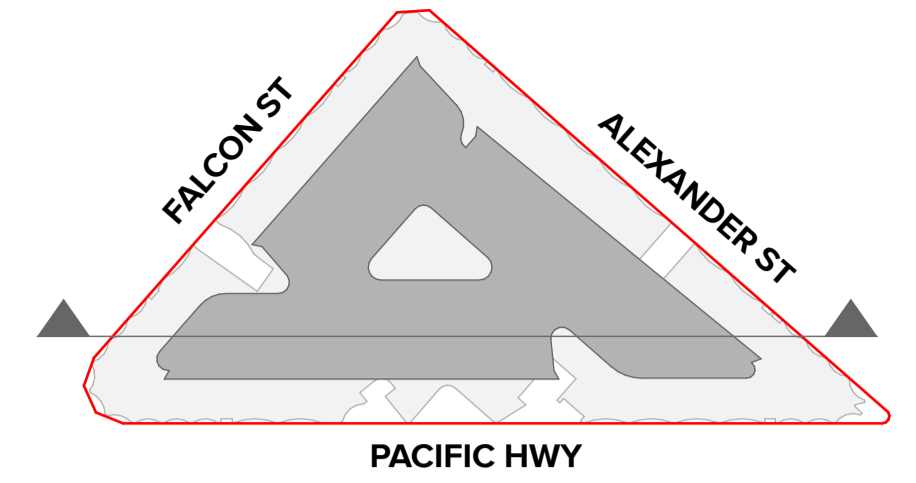
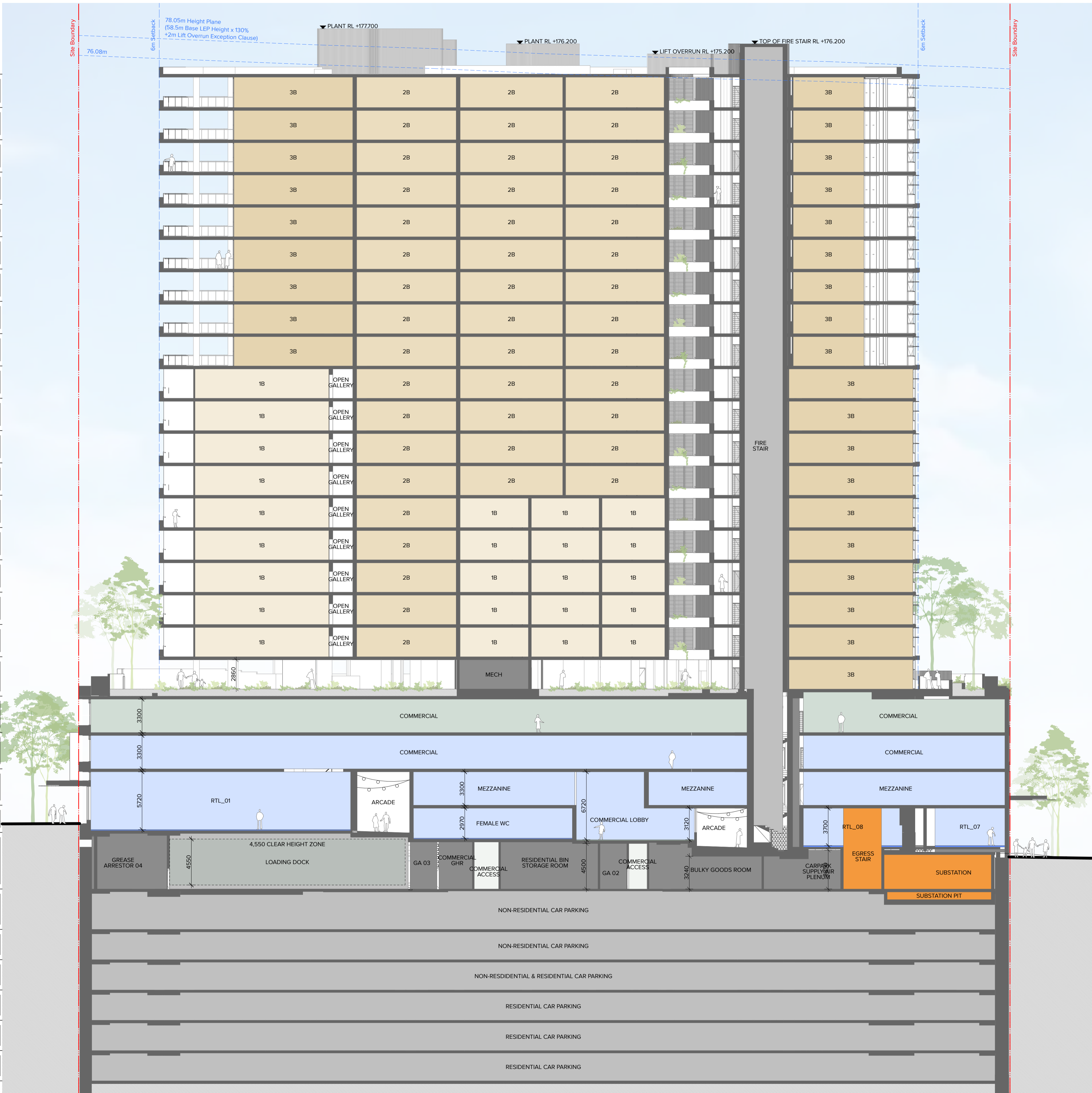


- ▼ Roof Level
RL 173.200
- ▼ Level 21
RL 169.900
- ▼ Level 20
RL 166.700
- ▼ Level 19
RL 163.500
- ▼ Level 18
RL 160.300
- ▼ Level 17
RL 157.100
- ▼ Level 16
RL 153.900
- ▼ Level 15
RL 150.700
- ▼ Level 14
RL 147.500
- ▼ Level 13
RL 144.300
- ▼ Level 12
RL 141.100
- ▼ Level 11
RL 137.900
- ▼ Level 10
RL 134.700
- ▼ Level 09
RL 131.500
- ▼ Level 08
RL 128.300
- ▼ Level 07
RL 125.100
- ▼ Level 06
RL 121.900
- ▼ Level 05
RL 118.700
- ▼ Level 04
RL 115.500
- ▼ Level 03
RL 111.600
- ▼ Level 02
RL 108.000
- ▼ Level 01
RL 104.400
- ▼ Mezzanine
RL 100.800
- ▼ Ground Level
RL 98.100
- ▼ Basement 01
RL 92.500
- ▼ Basement 02
RL 88.500
- ▼ Basement 03
RL 85.500
- ▼ Basement 04
RL 82.500
- ▼ Basement 05
RL 79.500
- ▼ Basement 06
RL 76.500
- ▼ Basement 07
RL 73.500




**Department of Planning,
Housing and Infrastructure**
 Issued under the *Environmental Planning and Assessment Act 1979*
 Approved Application No: SSD 66826207
 Approved on: 23 December 2024
 Signed: CA
 Sheet No: 1 of 11

NOTES
 THIS DRAWING IS COPYRIGHT © OF TURNER. NO REPRODUCTION WITHOUT PERMISSION, UNLESS NOTED OTHERWISE THIS DRAWING IS NOT FOR CONSTRUCTION. ALL DIMENSIONS AND LEVELS ARE TO BE CHECKED ON SITE PRIOR TO THE COMMENCEMENT OF WORK. IN THE EVENT OF ANY DISCREPANCIES FOR CLARIFICATION BEFORE PROCEEDING WITH WORK, DRAWINGS ARE NOT TO BE SCALED. USE ONLY FOLLOWED DIMENSIONS REFER TO CONSULTANT DOCUMENTATION FOR FURTHER INFORMATION. PC AND BIM FILES ARE UNCONTROLLED DOCUMENTS AND ARE ISSUED FOR INFORMATION ONLY.

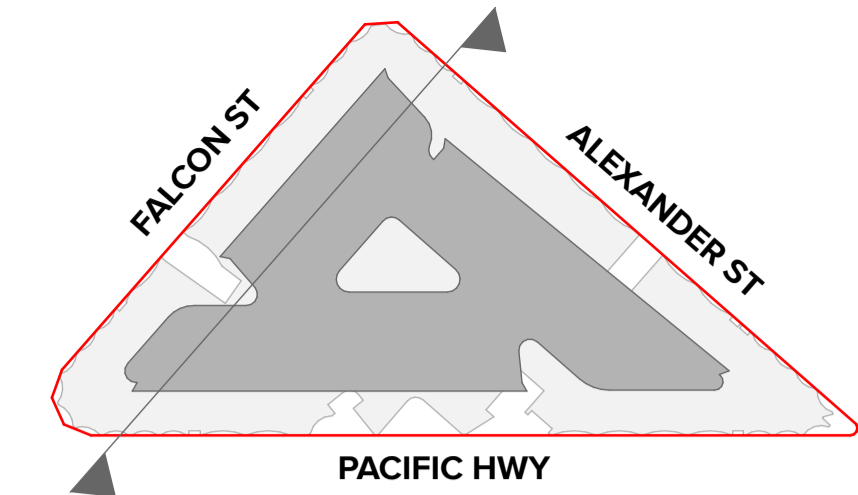
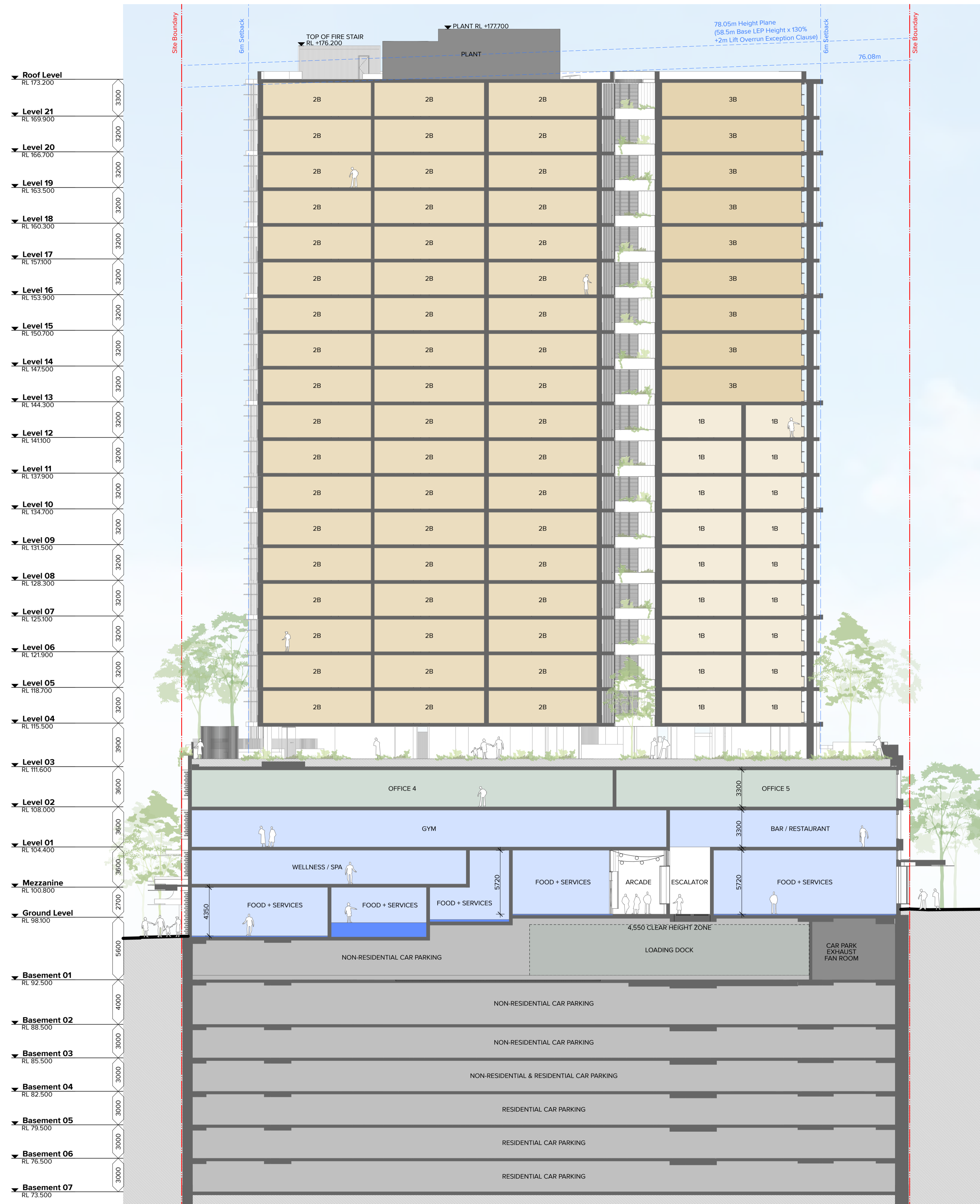
CLIENT
Deicorp
 Level 3 161 Redfern Street Redfern NSW
 2016



Rev	Date	Approved by	Revision Notes
B	22.09.23	KR	For Coordination
C	06.10.23	KR	For Coordination
D	23.10.23	KR	For Review
E	09.01.24	KR	For Coordination
F	07.03.24	KR	For Information
G	21.03.24	KR	For DA Issue
H	22.04.24	KR	For Information
I	15.08.24	AH	For Coordination
J	29.08.24	AH	For DA Issue

Project Title
Fiveways Crows Nest
 391/423 Pacific Hwy Crows Nest NSW 2065 Australia
 Drawing Title
**GA Sections
Section AA**

Scale
1:200 @A1, 50%@A3
 For DA Issue
 Project No.
19073
 Dwg No.
DA-310-101
 Drawn by
WC, CN, KR
 Rev
J
TURNER
 Level 7 ONE Oxford Street
 Darlinghurst NSW 2010
 AUSTRALIA
 T +61 2 8668 0000
 F +61 2 8668 0066
 turnerinfo.com.au



Roof Level	RL 173.200	3300
Level 21	RL 169.900	3200
Level 20	RL 166.700	3200
Level 19	RL 163.500	3200
Level 18	RL 160.300	3200
Level 17	RL 157.100	3200
Level 16	RL 153.900	3200
Level 15	RL 150.700	3200
Level 14	RL 147.500	3200
Level 13	RL 144.300	3200
Level 12	RL 141.100	3200
Level 11	RL 137.900	3200
Level 10	RL 134.700	3200
Level 09	RL 131.500	3200
Level 08	RL 128.300	3200
Level 07	RL 125.100	3200
Level 06	RL 121.900	3200
Level 05	RL 118.700	3200
Level 04	RL 115.500	3200
Level 03	RL 111.600	3900
Level 02	RL 108.000	3600
Level 01	RL 104.400	3600
Mezzanine	RL 100.800	3600
Ground Level	RL 98.100	2700
Basement 01	RL 92.500	5600
Basement 02	RL 88.500	4000
Basement 03	RL 85.500	3000
Basement 04	RL 82.500	3000
Basement 05	RL 79.500	3000
Basement 06	RL 76.500	3000
Basement 07	RL 73.500	3000


**Department of Planning,
Housing and Infrastructure**
 Issued under the Environmental Planning and Assessment Act 1979
 Approved Application No: SSD 66826207
 Approved on: 23 December 2024
 Signed: CA
 Sheet No: 2 of 11

NOTES
 THIS DRAWING IS COPYRIGHT © OF TURNER. NO REPRODUCTION WITHOUT PERMISSION. UNLESS NOTED OTHERWISE THIS DRAWING IS NOT FOR CONSTRUCTION. ALL DIMENSIONS AND LEVELS ARE TO BE CHECKED ON SITE PRIOR TO THE COMMENCEMENT OF WORK. BEFORE TURNING UP ANY DIMENSIONS FOR CONSTRUCTION BEFORE PROCEEDING WITH WORK. DRAWINGS ARE NOT TO BE SCALED. USE ONLY DIMENSIONS SHOWN. REFER TO CONSULTANT DOCUMENTATION FOR FURTHER INFORMATION. IFC AND BIM FILES ARE UNCONTROLLED DOCUMENTS AND ARE ISSUED FOR INFORMATION ONLY.

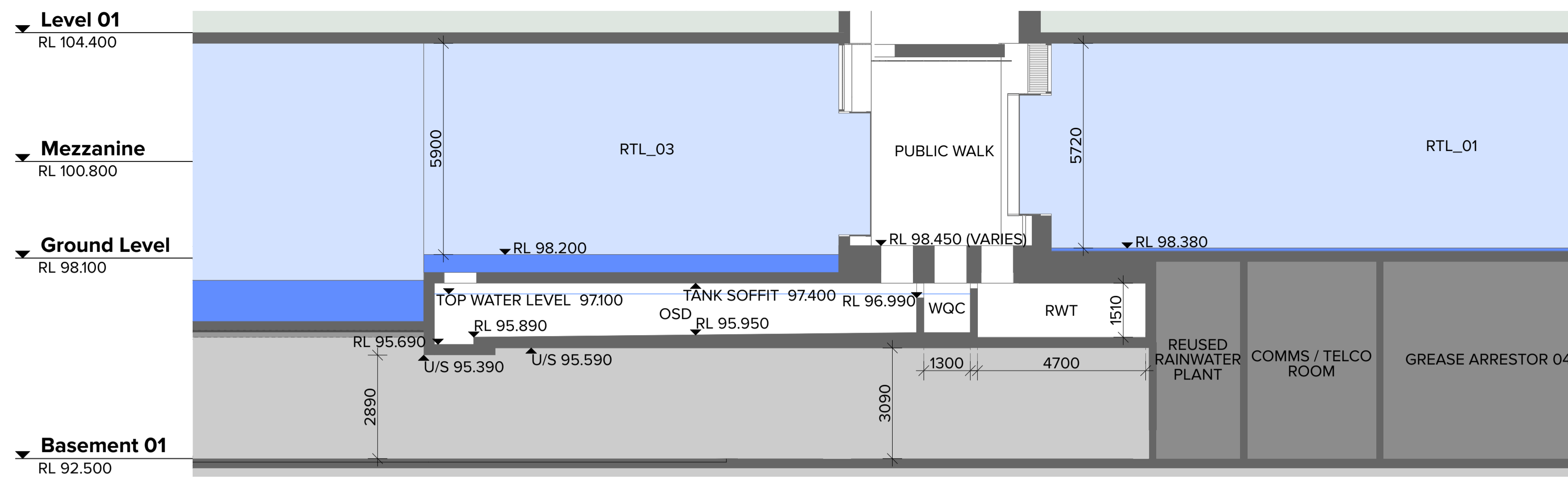
CLIENT
Deicorp
 Level 3 161 Redfern Street Redfern NSW
 2016



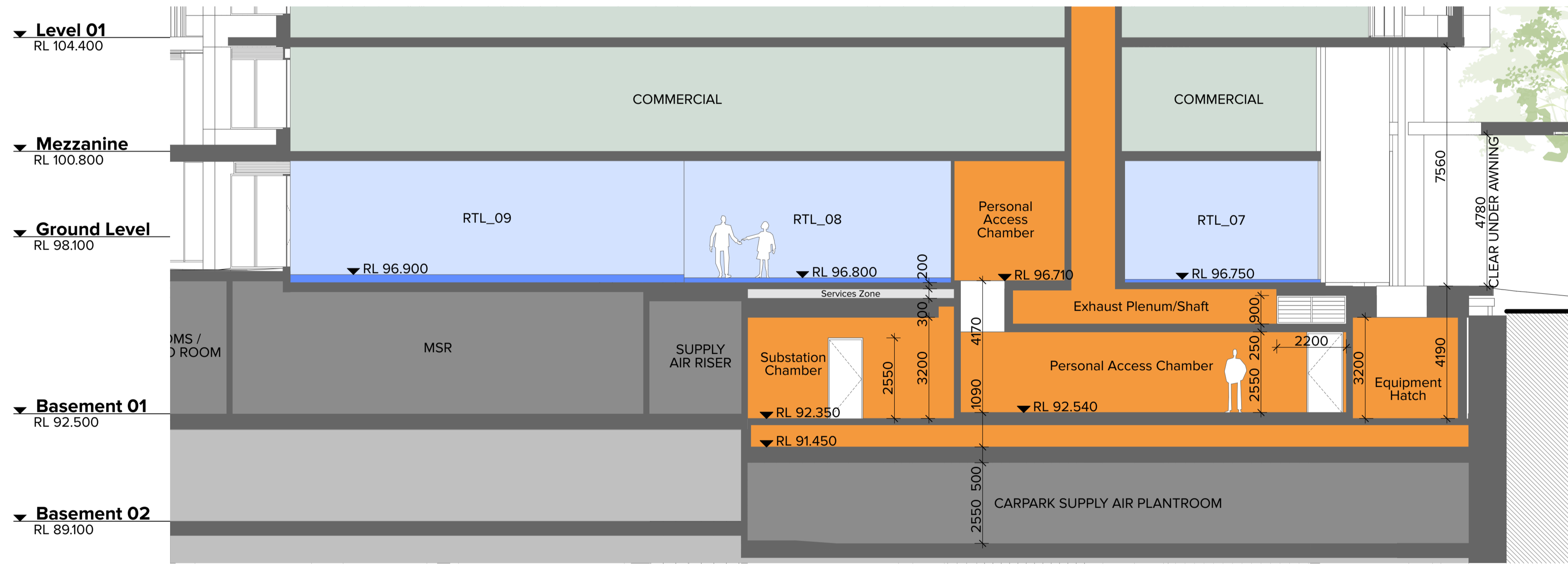
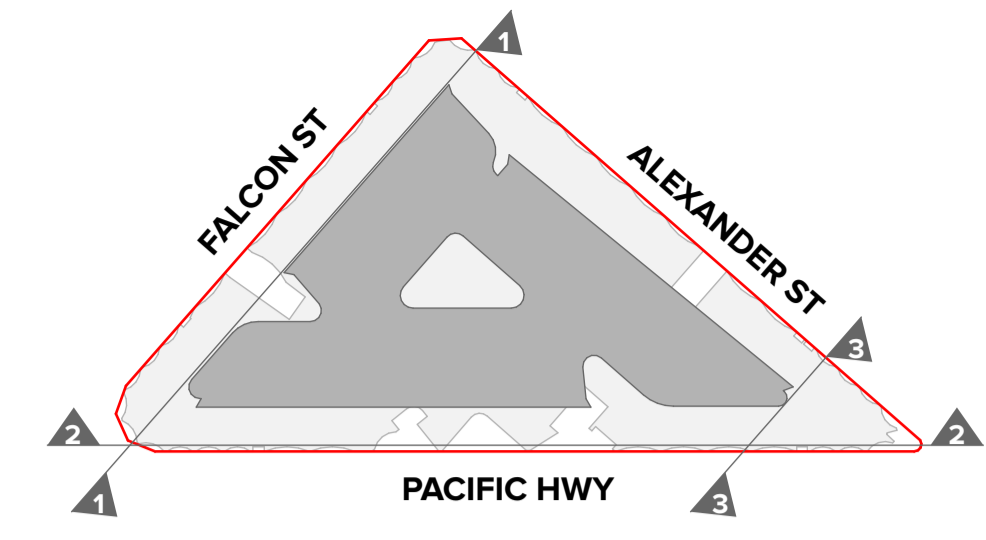
Rev	Date	Approved by	Revision Notes
A	22.09.23	KR	For Coordination
B	06.10.23	KR	For Review
C	23.10.23	KR	For Information
D	09.01.24	KR	For Information
E	07.03.24	KR	For DA Issue
F	21.03.24	KR	For Information
G	22.04.24	KR	For Information
H	15.08.24	AH	For Coordination
I	29.08.24	AH	For DA Issue

Project Title
Fiveways Crows Nest
 391/423 Pacific Hwy Crows Nest NSW 2065 Australia
Drawing Title
GA Sections
Section BB

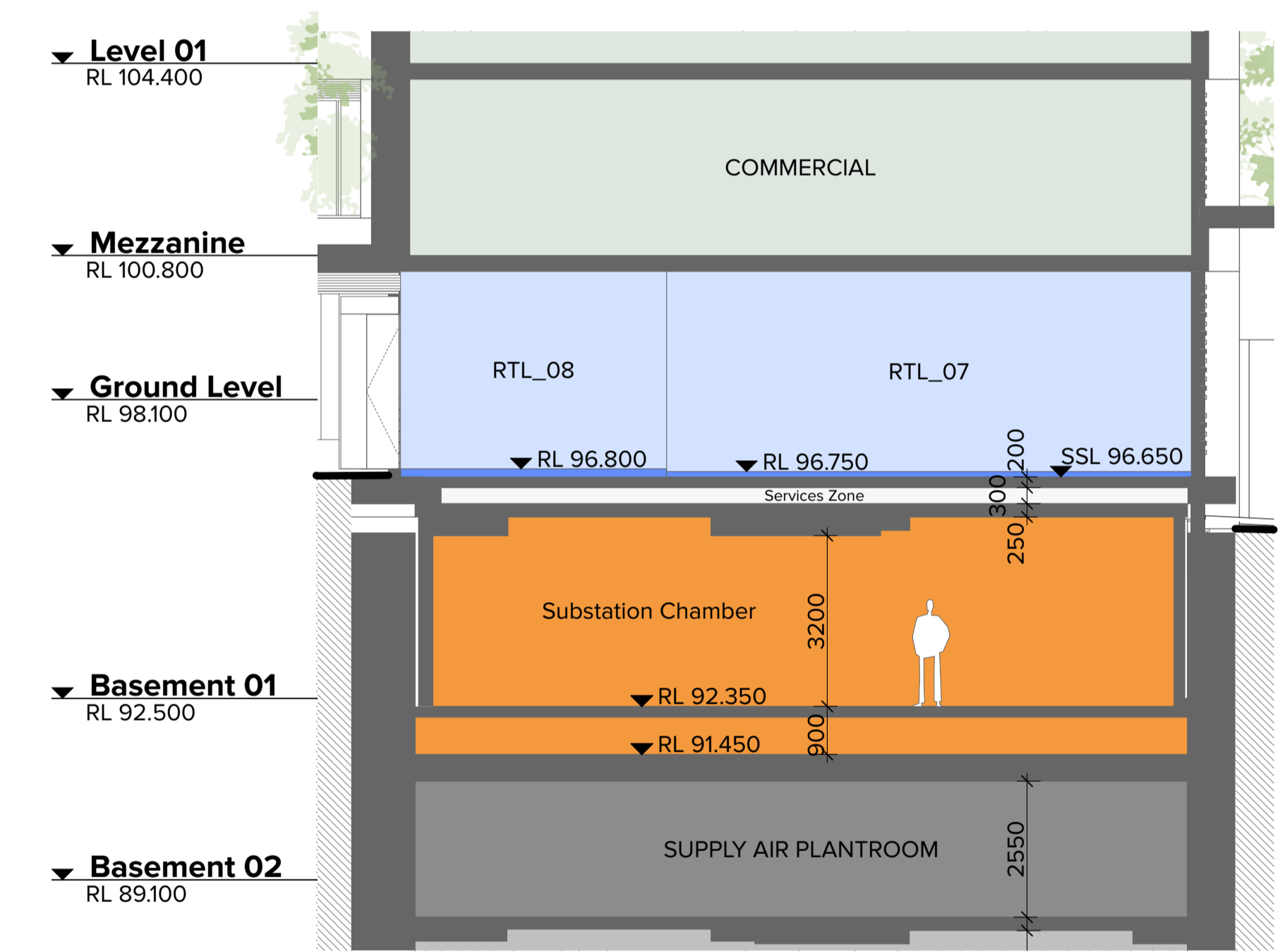
Scale: 1:200 @A1, 50% @A3
 Project No: 19073
 Drawing No: DA-310-201
 Status: For DA Issue
 Drawn by: WC, CN, KR
 Rev: I
 North
TURNER
 Level 7 ONE Oxford Street
 Darlinghurst NSW 2010
 AUSTRALIA
 T +61 2 8668 0000
 F +61 2 8668 0088
 turnerinfo.com.au



1 OSD Tank Section 1:100



2 Substation Section - Personal Access 1:100



3 Substation Section - Chamber 1:100


**Department of Planning,
Housing and Infrastructure**
Issued under the Environmental Planning and Assessment Act 1979
 Approved Application No: SSD 66826207
 Approved on: 23 December 2024
 Signed: CA
 Sheet No: 4 of 11

NOTES
 THIS DRAWING IS COPYRIGHT © OF TURNER. NO REPRODUCTION WITHOUT PERMISSION. UNLESS NOTED OTHERWISE THIS DRAWING IS NOT FOR CONSTRUCTION. ALL DIMENSIONS AND LEVELS ARE TO BE CHECKED ON SITE PRIOR TO THE COMMENCEMENT OF WORK. BEFORE TURNER OF ANY DISCREPANCIES FOR CLARIFICATION BEFORE PROCEEDING WITH WORK. DRAWINGS ARE NOT TO BE SCALED. USE ONLY DIMENSIONS SHOWN. REFER TO CONSULTANT DOCUMENTATION FOR FURTHER INFORMATION. IFC AND BIM FILES ARE UNCONTROLLED DOCUMENTS AND ARE ISSUED FOR INFORMATION ONLY.

CLIENT
Deicorp
 Level 3 161 Redfern Street Redfern NSW 2016

Rev	Date	Approved by	Revision Notes
01	11.09.23	KR	For Coordination
02	13.09.23	KR	For Coordination
C	22.09.23	KR	For Coordination
D	28.09.23	KR	For Coordination
E	06.10.23	KR	For Coordination
F	23.10.23	KR	For Review
G	07.03.24	KR	For Information
H	21.03.24	KR	For DA Issue

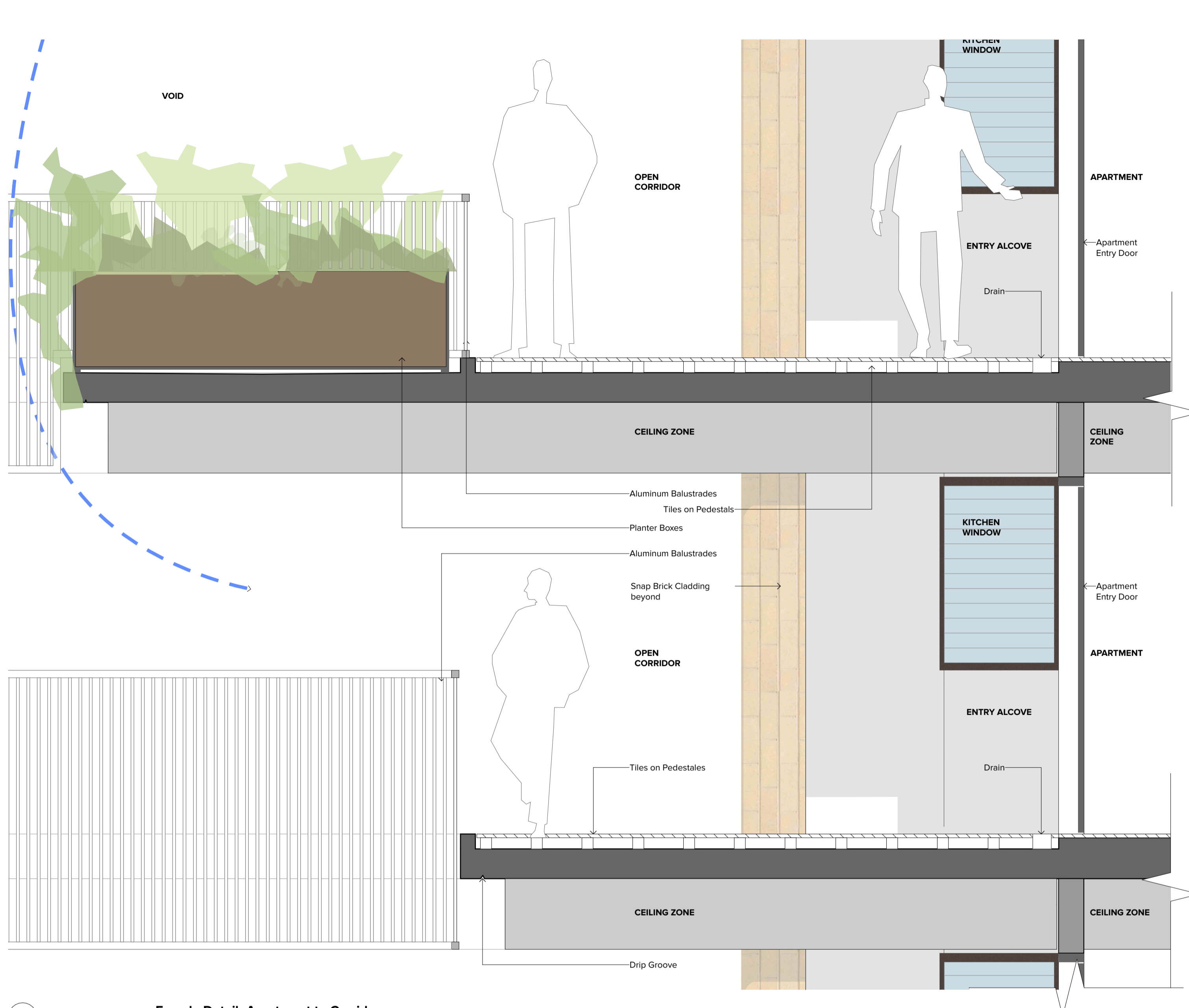
Project Title
Fiveways Crows Nest
 391/423 Pacific Hwy Crows Nest NSW 2065 Australia

Drawing Title
GA Sections
OSD & Substation Section

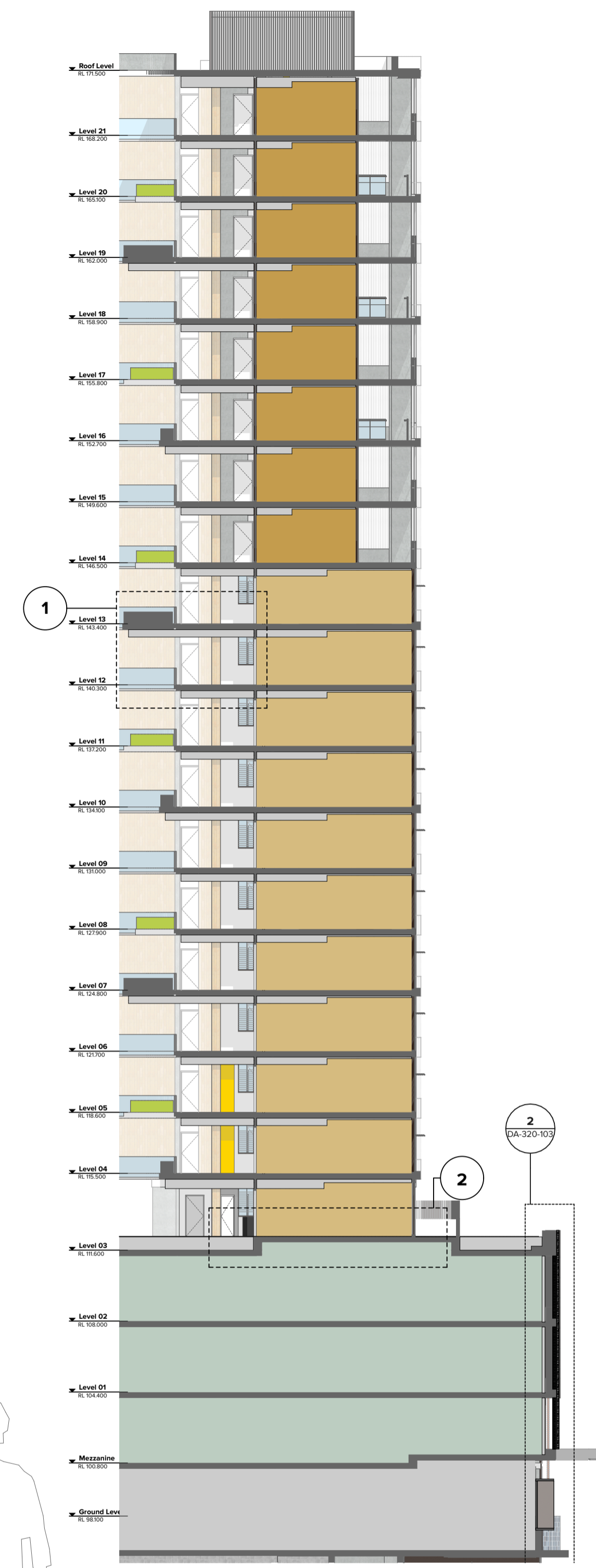
Scale
 1:100 @A1, 50% @A3

Project No. 19073
Drawn by WC, CN, KR
Dwg No. DA-310-401
Rev H

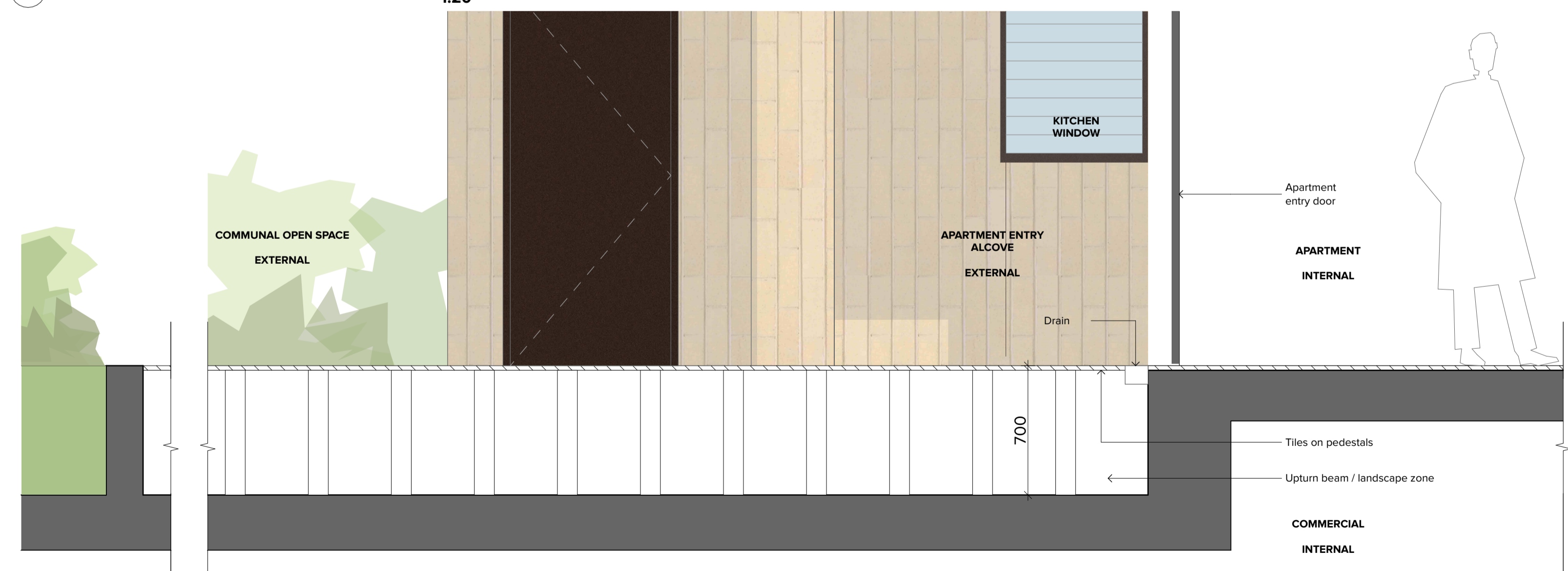
TURNER
 Level 7 ONE Oxford Street
 Darlinghurst NSW 2010
 AUSTRALIA
 T +61 2 8668 0000
 F +61 2 8668 0066
 turnerinfo.com.au



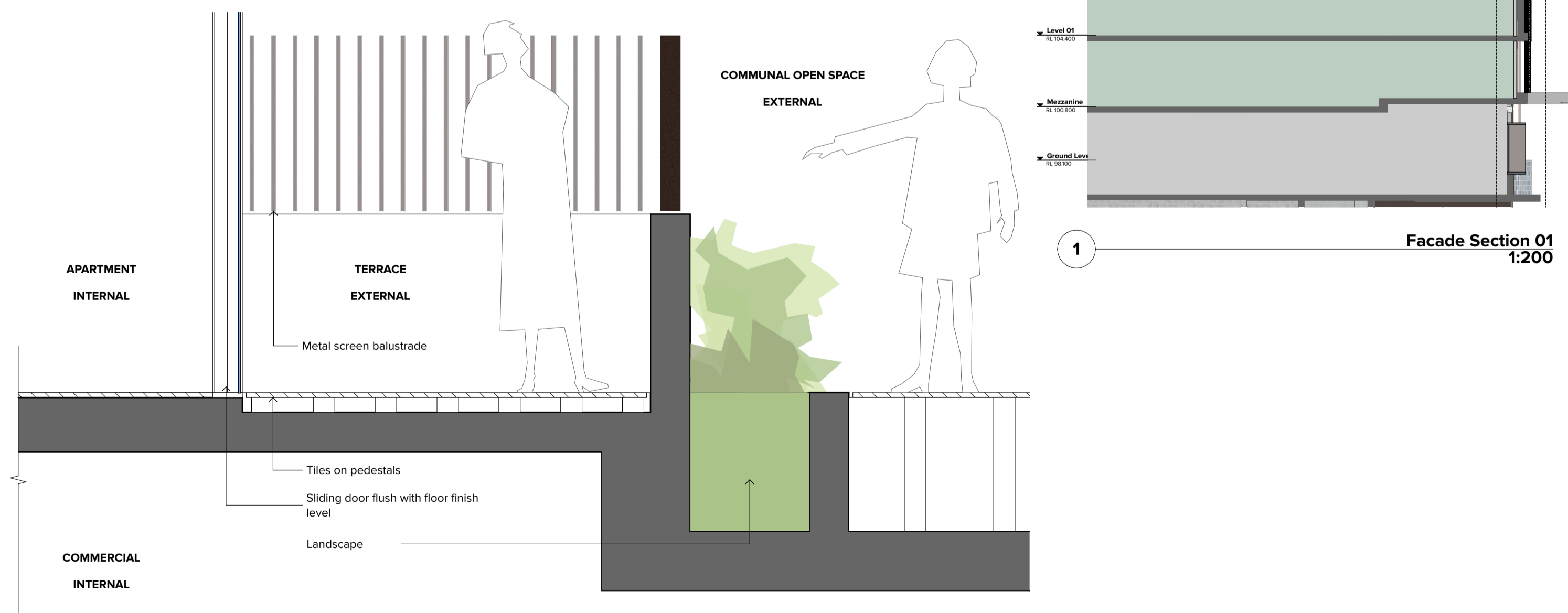

**Department of Planning,
Housing and Infrastructure**
 Issued under the Environmental Planning and Assessment Act 1979
 Approved Application No: SSD 66826207
 Approved on: 23 December 2024
 Signed: CA
 Sheet No: 5 of 11



1 Facade Detail_Apartment to Corridor 1:20



2 Facade Detail_Apartment to Podium 1:20



1 Facade Section 01 1:200

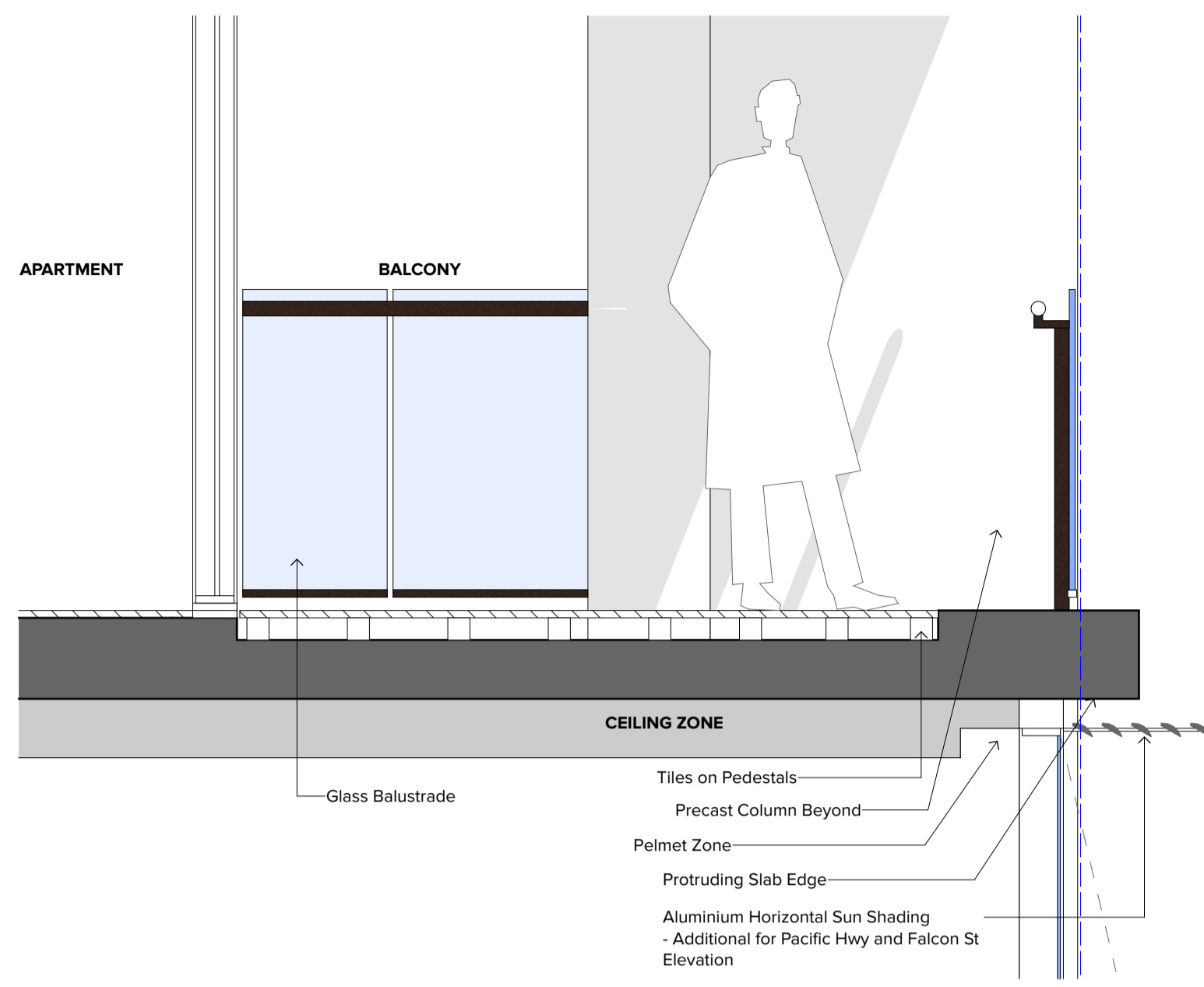
NOTES
 THIS DRAWING IS COPYRIGHT © OF TURNER. NO REPRODUCTION WITHOUT PERMISSION. UNLESS NOTED OTHERWISE THIS DRAWING IS NOT FOR CONSTRUCTION. ALL DIMENSIONS AND LEVELS ARE TO BE CHECKED ON SITE PRIOR TO THE COMMENCEMENT OF WORK. INFORM TURNER OF ANY DISCREPANCIES FOR CLARIFICATION BEFORE PROCEEDING WITH WORK. DRAWINGS ARE NOT TO BE SCALED. USE ONLY FIGURED DIMENSIONS. REFER TO CONSULTANT DOCUMENTATION FOR FURTHER INFORMATION. IFC AND BIM FILES ARE UNCONTROLLED DOCUMENTS AND ARE ISSUED FOR INFORMATION ONLY.

CLIENT
 Deicorp
 Level 3 161 Redfern Street Redfern NSW
 2016

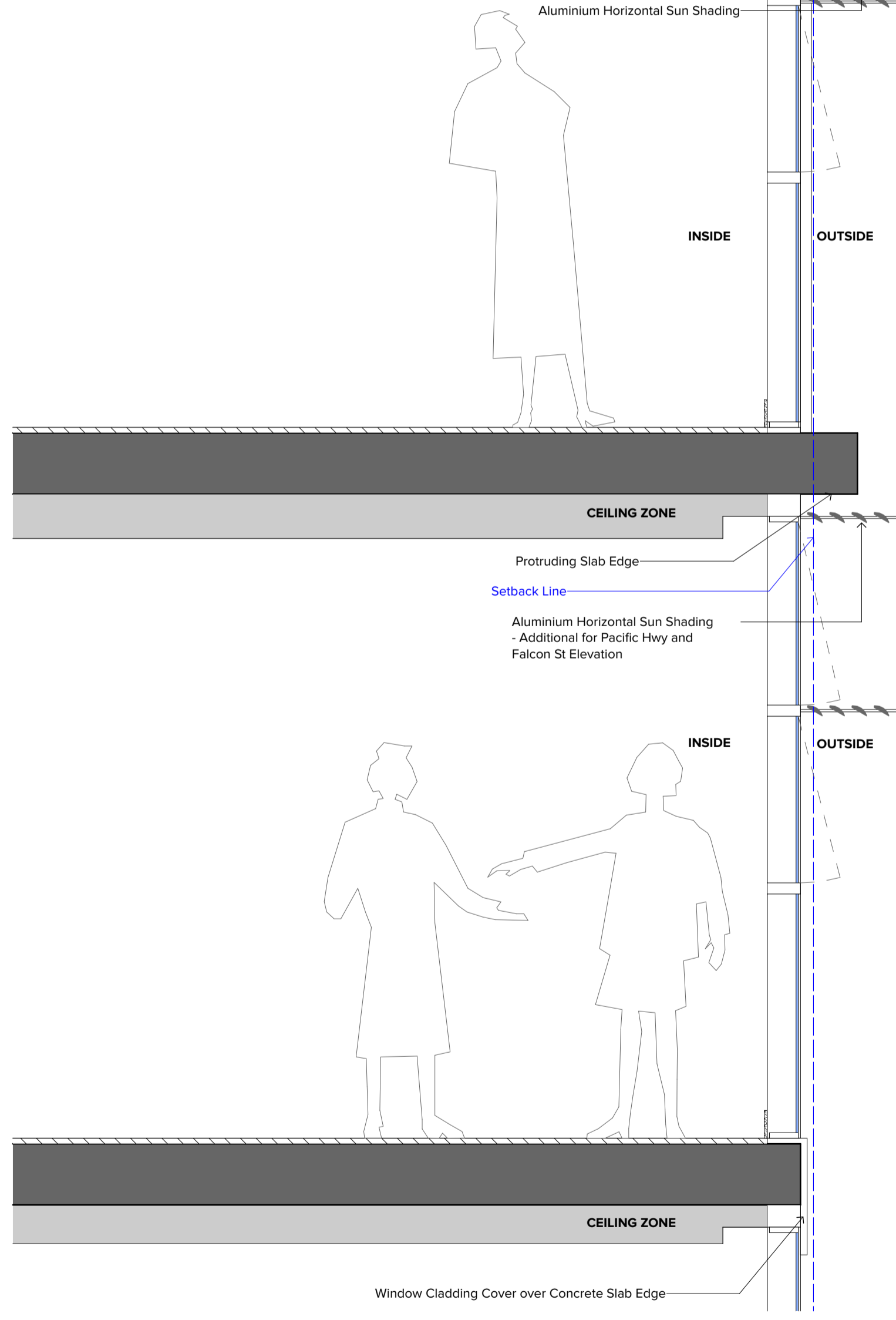
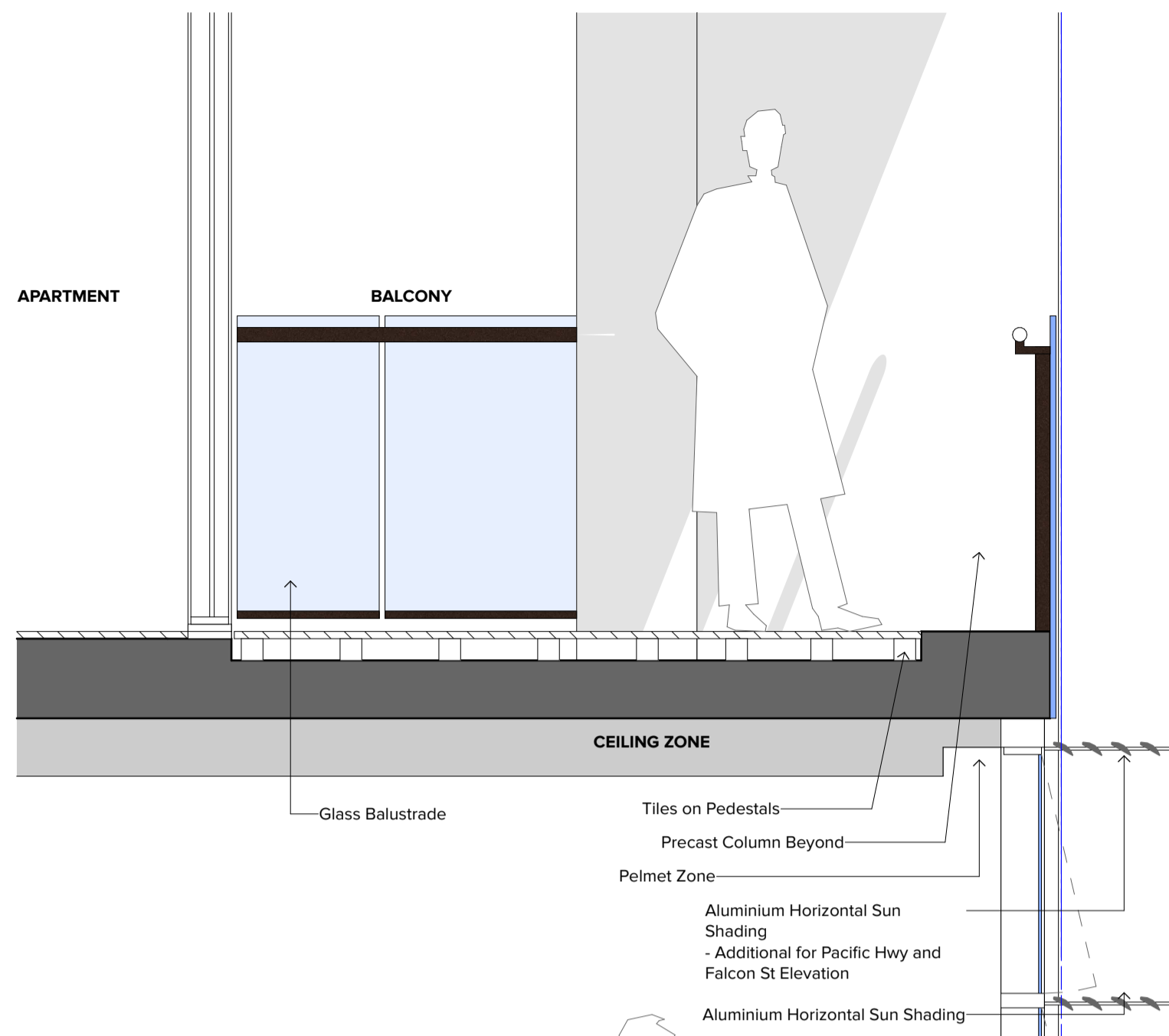
Rev	Date	Approved by	Revision Notes
A	02.02.24	KR	For Information
B	07.03.24	KR	For Information
C	21.03.24	KR	For DA Issue

Project Title
 Fiveways Crows Nest
 391/423 Pacific Hwy Crows Nest NSW 2065 Australia
Drawing Title
 Facade Sections
 Facade Section Details 01

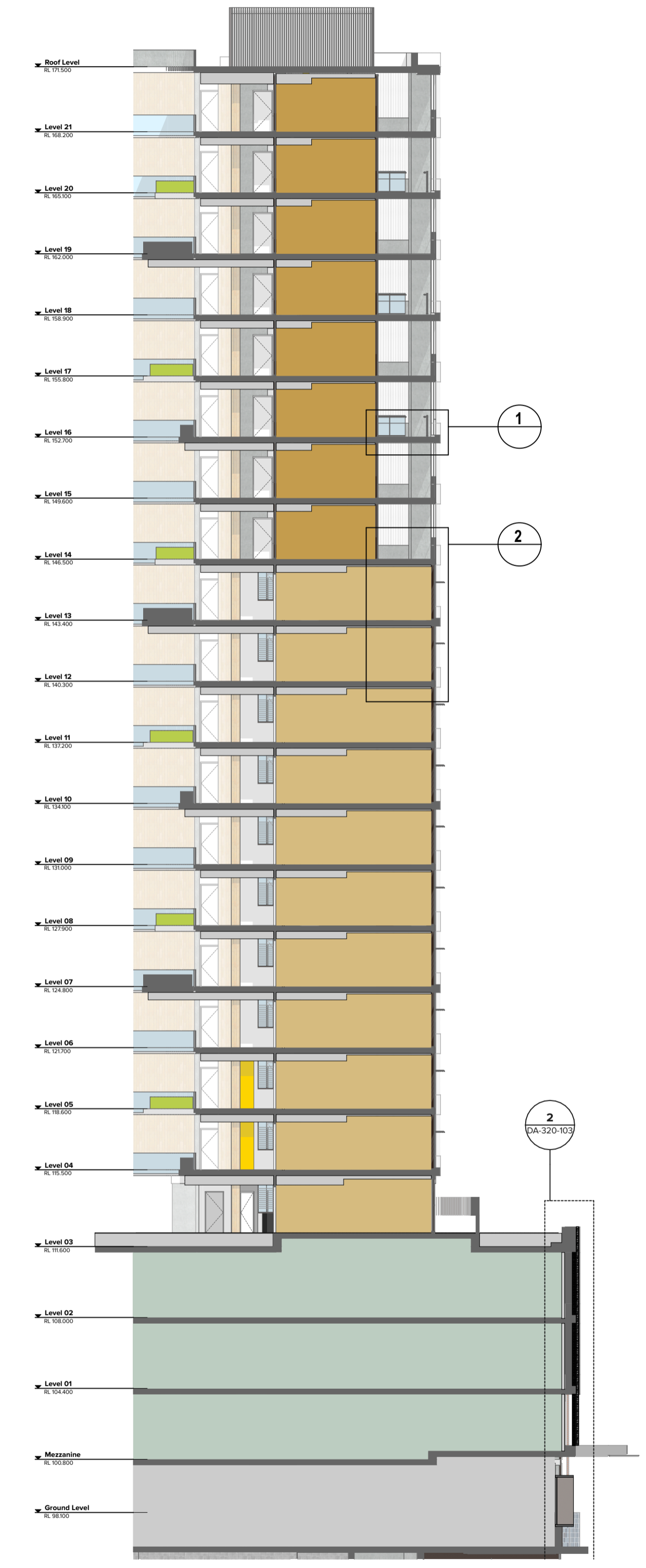
Scale
 1:200, 1:20 @A1, 50%@A3
Project No.
 19073
Dwg No.
 DA-320-101
Drawn by
 WC, CN, KR
Rev
 C



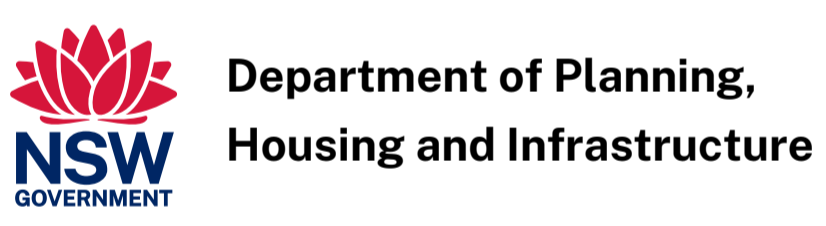
1 Facade Detail_Top Fixed Balustrade
1:20



2 Facade Detail_Apartment Slab Edges
1:20



3 Facade Section 01
1:200



Department of Planning,
Housing and Infrastructure

Issued under the Environmental Planning and Assessment Act 1979
Approved Application No: SSD 66826207
Approved on: 23 December 2024
Signed: CA
Sheet No: 6 of 11

NOTES
THIS DRAWING IS COPYRIGHT © OF TURNER. NO REPRODUCTION WITHOUT PERMISSION. UNLESS NOTED OTHERWISE THIS DRAWING IS NOT FOR CONSTRUCTION. ALL DIMENSIONS AND LEVELS ARE TO BE CHECKED ON SITE PRIOR TO THE COMMENCEMENT OF WORK. IN THE EVENT OF ANY DISCREPANCIES FOR CLARIFICATION BEFORE PROCEEDING WITH WORK, DRAWINGS ARE NOT TO BE SCALED. USE ONLY FIGURED DIMENSIONS. REFER TO CONSULTANT DOCUMENTATION FOR FURTHER INFORMATION. PC AND BIM FILES ARE UNCONTROLLED DOCUMENTS AND ARE ISSUED FOR INFORMATION ONLY.

CLIENT
Deicorp
Level 3 161 Redfern Street Redfern NSW
2016

Rev	Date	Approved by	Revision Notes
A	02.02.24	KR	For Information
B	07.03.24	KR	For Information
C	21.03.24	KR	For DA Issue

Project Title
Fiveways Crows Nest
391/423 Pacific Hwy Crows Nest NSW 2065 Australia

Scale
1:200, 1:20 @A1, 50%@A3

Project No. 19073
Drawn by WC, CN, KR
Status For Information
Dwg No. DA-320-102
Rev C

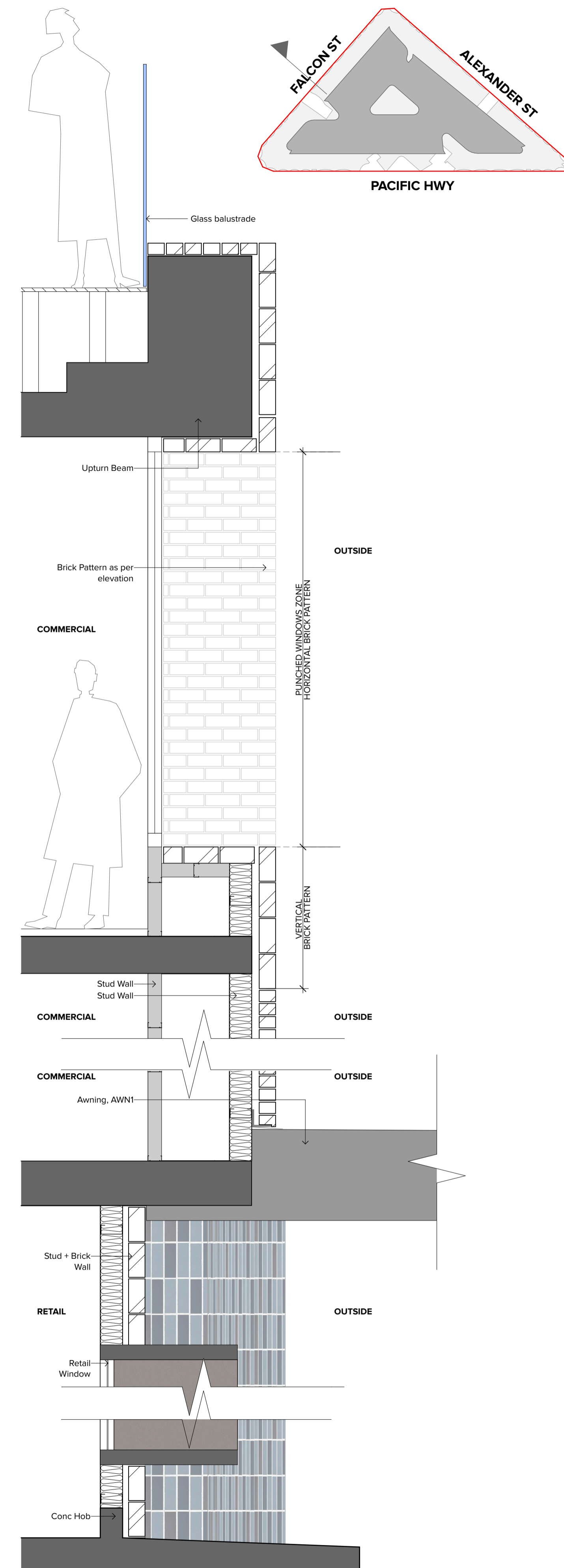
Drawing Title
Facade Sections
Facade Section Details 02



Level 7 ONE Oxford Street
Sydney NSW 2010
AUSTRALIA
T +61 2 8568 0000
F +61 2 8568 0066
turnerco.com.au



1 Facade Type 01 - Falcon St
1:10



2 Facade Detail_Apartment Slab Edges
1:20

MATERIAL AND FINISHES LEGEND

- Metal Cladding Finishes**
- Cladding Type 1:
Profiled Vertical Cladding
Finish to match PCF2
- Cladding Type 2:
Aluminium Cladding
Finish to match PCF1
- Powdercoat Finish Type 1:
Dulux "Burnished Copper Kinetic"
- Powdercoat Finish Type 2:
Colour "light bronze"
- Powdercoat Finish Type 3:
Colour "white"
- Concrete Finishes**
- Concrete Finish Type 1:
Concrete
- Paint Finishes**
- Paint Finish Type 1:
Paint finish to match Dulux "Natural White"
- Paint Finish Type 2:
Paint finish to match PCF1
- Paint Finish Type 3:
Paint finish light concrete grey
- Brickwork**
- Brickwork Type 1A:
Blend of "San Selmo Smoke" Range
Dry Pressed Brick
Horizontal Stretcher bond
- Brickwork Type 1B:
Blend of "San Selmo Smoke" Range
Dry Pressed Brick
Vertical Stretcher bond
- Brickwork Type 1C:
Blend of "San Selmo Smoke" Range
Dry Pressed Brick
Horizontal Stretcher bond, Corbel Pattern 2
- Brickwork Type 1D:
Blend of "San Selmo Smoke" Range
Dry Pressed Brick
Breeze Brick Pattern 1
- Brickwork Type 2:
Blend of "Specialty Espresso, Pacific, Royal"
Glazed Brick
Vertical Stack bond
- Brickwork Type 2A:
Blend of "Specialty Espresso, Pacific, Royal"
Glazed Brick
Stretcher bond, Corbel Pattern 2
- Brickwork Type 2B:
Blend of "Specialty Espresso, Pacific, Royal"
Glazed Brick
Breeze Brick Pattern 1
- Brickwork Type 3:
"Specialty Siena"
Glazed Brick
Vertical Stack bond
- Brickwork Type 4:
To match Bowral "Chillingham White"
Brick Facings onto Steel Railing System
Stretcher bond
- Glass**
- Glass, Clear, Type 1:
Aluminium Framing System, PCF1
- Glass, Laminated with mesh interlay, Type 2:
Aluminium Framing System, PCF1
To match GrazCristall Code 054
- Balustrade**
- Balustrade Type 1 - Balconies:
Frameless Clear Glass - Slab top fixed.
- Balustrade Type 2 - Balconies:
Frameless Clear Glass - Slab front fixed.
- Balustrade Type 3 - Balconies:
Clear Glass on Concrete Spandrel,
Railing finish, PCF1
- Balustrade Type 4 - Terrace:
Metal Screen on Concrete, SCN 2
- Balustrade Type 5 - Corridor Void:
Vertical Metal Screen - Slab front fixed, PCF3
- Balustrade Type 6 - Corridor Void:
Vertical Metal Screen - Slab top fixed, PCF3
- Balustrade Type 7 - Podium:
Frameless Clear Glass - fixed to Spandrel
- Screen & Louvres**
- Louvre Type 1:
Fixed Horizontal Louvre System,
Terracotta Baguette Profile Type 1
Spacing to Building Services requirements
- Louvre Type 2 - Substation:
Fixed Horizontal Louvre System,
To match Terracotta Baguette Profile Type 1
to Ausgrid's Approval
- Louvre Type 3:
Fixed Horizontal Cladding System,
Terracotta Baguette Profile Type 1
- Screen Type 1:
Perforated V-profile mesh, PCF2
To match Solidal PMP V-series
- Screen Type 2A:
Vertical Metal Screen, PCF1
- Screen Type 2B:
Vertical Metal Screen, PCF2
- Screen Type 4:
Aluminium Louvres
Horizontal Sun Shading onto window system, PCF1

NOTES
THIS DRAWING IS COPYRIGHT © OF TURNER. NO REPRODUCTION WITHOUT PERMISSION. UNLESS NOTED OTHERWISE THIS DRAWING IS NOT FOR CONSTRUCTION. ALL DIMENSIONS AND LEVELS ARE TO BE CHECKED ON SITE PRIOR TO THE COMMENCEMENT OF WORK. IN THE EVENT OF ANY DISCREPANCIES FOR CLARIFICATION BEFORE PROCEEDING WITH WORK, DRAWINGS ARE NOT TO BE SCALED. USE ONLY DIMENSIONS REFER TO CONSULTANT DOCUMENTATION FOR FURTHER INFORMATION. PCF AND BWK FILE NAME UNCONTROLLED DOCUMENTS ARE NOT BE SUBJECT FOR INFORMATION ONLY.

CLIENT
Deicorp
Level 3 161 Redfern Street Redfern NSW
2016

Rev	Date	Approved by	Revision Notes
01	02.02.24	KR	For Information
02	08.02.24	KR	For Information
C	07.03.24	KR	For Information
D	21.03.24	KR	For DA Issue

Project Title
Fiveways Crows Nest
391/423 Pacific Hwy Crows Nest NSW 2065 Australia

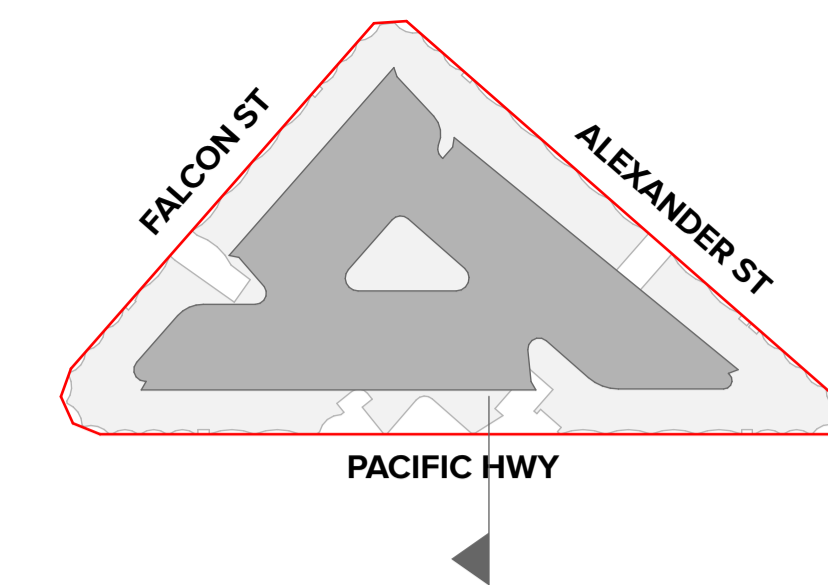
Scale
1:10, 1:20 @A1, 50% @A3

Project No. **19073** Drawn by **WC, CN, KR** North

Drawn by **DA-320-103** Rev **D**

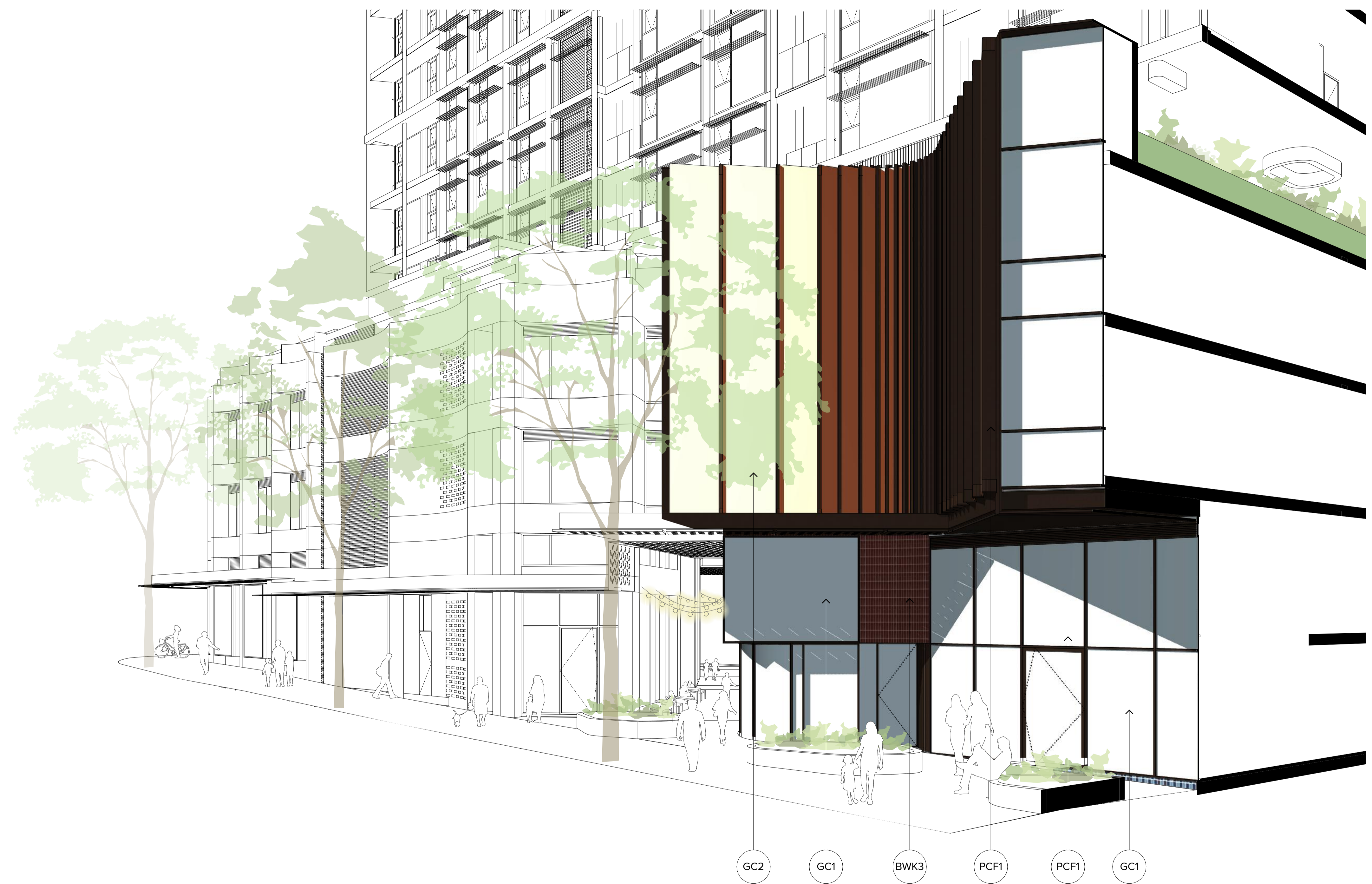
Drawing Title
Facade Sections
Facade Section FT01

TURNER
Level 7 ONE Oxford Street
Sydney NSW 2010
AUSTRALIA
T +61 2 8668 0000
F +61 2 8668 0066
turnerco.com.au



MATERIAL AND FINISHES LEGEND

- Metal Cladding Finishes**
- CLD1 Cladding Type 1: Profiled Vertical Cladding Finish to match PCF2
- CLD2 Cladding Type 2: Aluminium Cladding Finish to match PCF1
- PCF1 Powdercoat Finish Type 1: Dulux "Burnished Copper Kinetic"
- PCF2 Powdercoat Finish Type 2: Colour "light bronze"
- PCF3 Powdercoat Finish Type 3: Colour "white"
- Concrete Finishes**
- COF1 Concrete Finish Type 1: Concrete
- Paint Finishes**
- PF1 Paint Finish Type 1: Paint finish to match Dulux "Natural White"
- PF2 Paint Finish Type 2: Paint finish to match PCF1
- PF3 Paint Finish Type 3: Paint finish light concrete grey
- Brickwork**
- BWK1A Brickwork Type 1A: Blend of "San Selmo Smoke" Range Dry Pressed Brick Horizontal Stretcher bond
- BWK1B Brickwork Type 1B: Blend of "San Selmo Smoke" Range Dry Pressed Brick Vertical Stretcher bond
- BWK1C Brickwork Type 1C: Blend of "San Selmo Smoke" Range Dry Pressed Brick Horizontal Stretcher bond, Corbel Pattern 2
- BWK1D Brickwork Type 1D: Blend of "San Selmo Smoke" Range Dry Pressed Brick Breeze Brick Pattern 1
- BWK2 Brickwork Type 2: Blend of "Specialty Espresso, Pacific, Royal" Glazed Brick Vertical Slack bond
- BWK2A Brickwork Type 2A: Blend of "Specialty Espresso, Pacific, Royal" Glazed Brick Stretcher bond, Corbel Pattern 2
- BWK2B Brickwork Type 2B: Blend of "Specialty Espresso, Pacific, Royal" Glazed Brick Breeze Brick Pattern 1
- BWK3 Brickwork Type 3: "Specialty Sierra" Glazed Brick Vertical Slack bond
- BWK4 Brickwork Type 4: To match Bowral "Chillingham White" Brick Facings onto Steel Railing System Stretcher bond
- Glass**
- GC1 Glass, Clear, Type 1: Aluminium Framing System, PCF1
- GC2 Glass, Laminated with mesh interlay, Type 2: Aluminium Framing System, PCF1 To match GrazCristall Code 054
- Balustrade**
- BAL1 Balustrade Type 1 - Balconies: Frameless Clear Glass - Slab top fixed.
- BAL2 Balustrade Type 2 - Balconies: Frameless Clear Glass - Slab front fixed.
- BAL3 Balustrade Type 3 - Balconies: Clear Glass on Concrete Spandrel, Railing finish, PCF1
- BAL4 Balustrade Type 4 - Terrace: Metal Screen on Concrete, SCN 2
- BAL5 Balustrade Type 5 - Corridor Void: Vertical Metal Screen - Slab top fixed, PCF3
- BAL6 Balustrade Type 6 - Corridor Void: Vertical Metal Screen - Slab top fixed, PCF3
- BAL7 Balustrade Type 7 - Podium: Frameless Clear Glass - fixed to Spandrel
- Screen & Louvres**
- LV1 Louvre Type 1: Fixed Horizontal Louvre System. Terracotta Baguette Profile Type 1 Spacing to Building Services requirements
- LV2 Louvre Type 2 - Substation: Fixed Horizontal Louvre System. To match Terracotta Baguette Profile Type 1 to Ausgrid's Approval
- LV3 Louvre Type 3: Fixed Horizontal Cladding System. Terracotta Baguette Profile Type 1
- SCN1 Screen Type 1: Perforated V-profile mesh, PCF2 To match Solidal PMP V-series
- SCN2A Screen Type 2A: Vertical Metal Screen, PCF1
- SCN2B Screen Type 2B: Vertical Metal Screen, PCF2
- SCN4 Screen Type 4: Aluminium Louvres Horizontal Sun Shading onto window system, PCF1



1 Facade Type 02 - Pacific Hwy
1:10

**Department of Planning,
Housing and Infrastructure**

Issued under the Environmental Planning and Assessment Act 1979

Approved Application No: SSD 66826207

Approved on: 23 December 2024

Signed: CA

Sheet No: 8 of 11

NOTES
THIS DRAWING IS COPYRIGHT © OF TURNER. NO REPRODUCTION WITHOUT PERMISSION. UNLESS NOTED OTHERWISE THIS DRAWING IS NOT FOR CONSTRUCTION. ALL DIMENSIONS AND LEVELS ARE TO BE CHECKED ON SITE PRIOR TO THE COMMENCEMENT OF WORK. IN THE EVENT OF ANY DISCREPANCIES FOR CLARIFICATION BEFORE PROCEEDING WITH WORK, DRAWINGS ARE NOT TO BE SCALED. USE ONLY FIGURED DIMENSIONS. REFER TO CONSULTANT DOCUMENTATION FOR FURTHER INFORMATION. DWG, PCF AND BWK FILES ARE UNCONTROLLED DOCUMENTS AND ARE ISSUED FOR INFORMATION ONLY.

CLIENT
Deicorp
Level 3 161 Redfern Street Redfern NSW
2016

Rev	Date	Approved by	Revision Notes
01	02.02.24	KR	For Information
02	08.02.24	KR	For Information
C	07.03.24	KR	For Information
D	21.03.24	KR	For DA Issue
E	16.10.24	SC	For DA Issue

Project Title
Fiveways Crows Nest
391/423 Pacific Hwy Crows Nest NSW 2065 Australia

Drawing Title
Facade Sections
Facade Section FT02

Scale
1:10 @A1, 50%@A3

Project No.
19073

Drawn by
WC, CN, KR

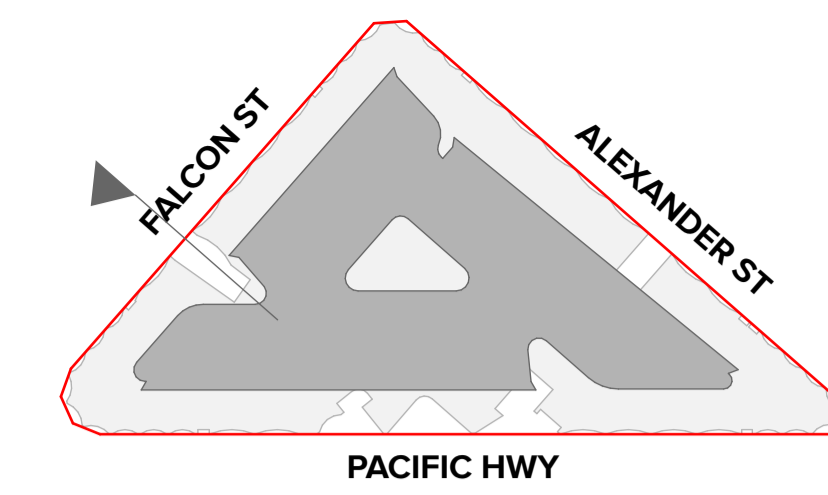
Dwg No.
DA-320-104

Rev
E

TURNER

Level 7 ONE Oxford Street
Sydney NSW 2010
AUSTRALIA

T +61 2 8668 0000
F +61 2 8668 0066
turnerinfo.com.au



MATERIAL AND FINISHES LEGEND

- Metal Cladding Finishes**
- CLD1 Cladding Type 1: Profiled Vertical Cladding Finish to match PCF2
- CLD2 Cladding Type 2: Aluminium Cladding Finish to match PCF1
- PCF1 Powdercoat Finish Type 1: Dulux "Burnished Copper Kinetic"
- PCF2 Powdercoat Finish Type 2: Colour "light bronze"
- PCF3 Powdercoat Finish Type 3: Colour "white"
- Concrete Finishes**
- COF1 Concrete Finish Type 1: Concrete
- Paint Finishes**
- PF1 Paint Finish Type 1: Paint finish to match Dulux "Natural White"
- PF2 Paint Finish Type 2: Paint finish to match PCF1
- PF3 Paint Finish Type 3: Paint finish light concrete grey
- Brickwork**
- BWK1A Brickwork Type 1A: Blend of "San Selmo Smoke" Range Dry Pressed Brick Horizontal Stretcher bond
- BWK1B Brickwork Type 1B: Blend of "San Selmo Smoke" Range Dry Pressed Brick Vertical Stretcher bond
- BWK1C Brickwork Type 1C: Blend of "San Selmo Smoke" Range Dry Pressed Brick Horizontal Stretcher bond, Corbel Pattern 2
- BWK1D Brickwork Type 1D: Blend of "San Selmo Smoke" Range Dry Pressed Brick Breeze Brick Pattern 1
- BWK2 Brickwork Type 2: Blend of "Specialty Espresso, Pacific, Royal" Glazed Brick Vertical Slack bond
- BWK2A Brickwork Type 2A: Blend of "Specialty Espresso, Pacific, Royal" Glazed Brick Stretcher bond, Corbel Pattern 2
- BWK2B Brickwork Type 2B: Blend of "Specialty Espresso, Pacific, Royal" Glazed Brick Breeze Brick Pattern 1
- BWK3 Brickwork Type 3: "Specialty Sierra" Glazed Brick Vertical Slack bond
- BWK4 Brickwork Type 4: To match Bowral "Chillingham White" Brick Facings onto Steel Railing System Stretcher bond
- Glass**
- GC1 Glass, Clear, Type 1: Aluminium Framing System, PCF1
- GC2 Glass, Laminated with mesh interlay, Type 2: Aluminium Framing System, PCF1 To match GrazCristall Code 054
- Balustrade**
- BAL1 Balustrade Type 1 - Balconies: Frameless Clear Glass - Slab top fixed.
- BAL2 Balustrade Type 2 - Balconies: Frameless Clear Glass - Slab front fixed.
- BAL3 Balustrade Type 3 - Balconies: Clear Glass on Concrete Spandrel, Railing finish, PCF1
- BAL4 Balustrade Type 4 - Terrace: Metal Screen on Concrete, SCN 2
- BAL5 Balustrade Type 5 - Corridor Void: Vertical Metal Screen - Slab top fixed, PCF3
- BAL6 Balustrade Type 6 - Corridor Void: Vertical Metal Screen - Slab top fixed, PCF3
- BAL7 Balustrade Type 7 - Podium: Frameless Clear Glass - fixed to Spandrel
- Screen & Louvres**
- LV1 Louvre Type 1: Fixed Horizontal Louvre System. Terracotta Baguette Profile Type 1 Spacing to Building Services requirements
- LV2 Louvre Type 2 - Substation: Fixed Horizontal Louvre System. To match Terracotta Baguette Profile Type 1 to Ausgrid's Approval
- LV3 Louvre Type 3: Fixed Horizontal Cladding System. Terracotta Baguette Profile Type 1
- Screen Type 1:** Perforated V-profile mesh, PCF2 To match Solidal PMP V-series
- SCN2A Screen Type 2A: Vertical Metal Screen, PCF1
- SCN2B Screen Type 2B: Vertical Metal Screen, PCF2
- SCN4 Screen Type 4: Aluminium Louvres Horizontal Sun Shading onto window system, PCF1



1 Facade Type 03 - Falcon St
1:10


**Department of Planning,
Housing and Infrastructure**

Issued under the Environmental Planning and Assessment Act 1979
 Approved Application No: SSD 66826207
 Approved on: 23 December 2024
 Signed: CA
 Sheet No: 9 of 11

NOTES
 THIS DRAWING IS COPYRIGHT © OF TURNER. NO REPRODUCTION WITHOUT PERMISSION. UNLESS NOTED OTHERWISE THIS DRAWING IS NOT FOR CONSTRUCTION. ALL DIMENSIONS AND LEVELS ARE TO BE CHECKED ON SITE PRIOR TO THE COMMENCEMENT OF WORK. INFORM TURNER OF ANY DISCREPANCIES FOR CLARIFICATION BEFORE PROCEEDING WITH WORK. DRAWINGS ARE NOT TO BE SCALED. USE ONLY DIMENSIONS REFER TO CONSULTANT DOCUMENTATION FOR FURTHER INFORMATION. DWG, PCF AND BWK FILES ARE UNCONTROLLED DOCUMENTS AND ARE ISSUED FOR INFORMATION ONLY.

CLIENT
Deicorp
 Level 3 161 Redfern Street Redfern NSW
 2016

Rev	Date	Approved by	Revision Notes
01	02.02.24	KR	For Information
02	08.02.24	KR	For Information
C	07.03.24	KR	For Information
D	21.03.24	KR	For DA Issue
E	16.10.24	SC	For DA Issue

Project Title
Fiveways Crows Nest
 391/423 Pacific Hwy Crows Nest NSW 2065 Australia

Scale
 1:10 @A1, 50%@A3

Project No. 19073 **WC, CN, KR**

Dwg No. DA-320-105 **Rev** E

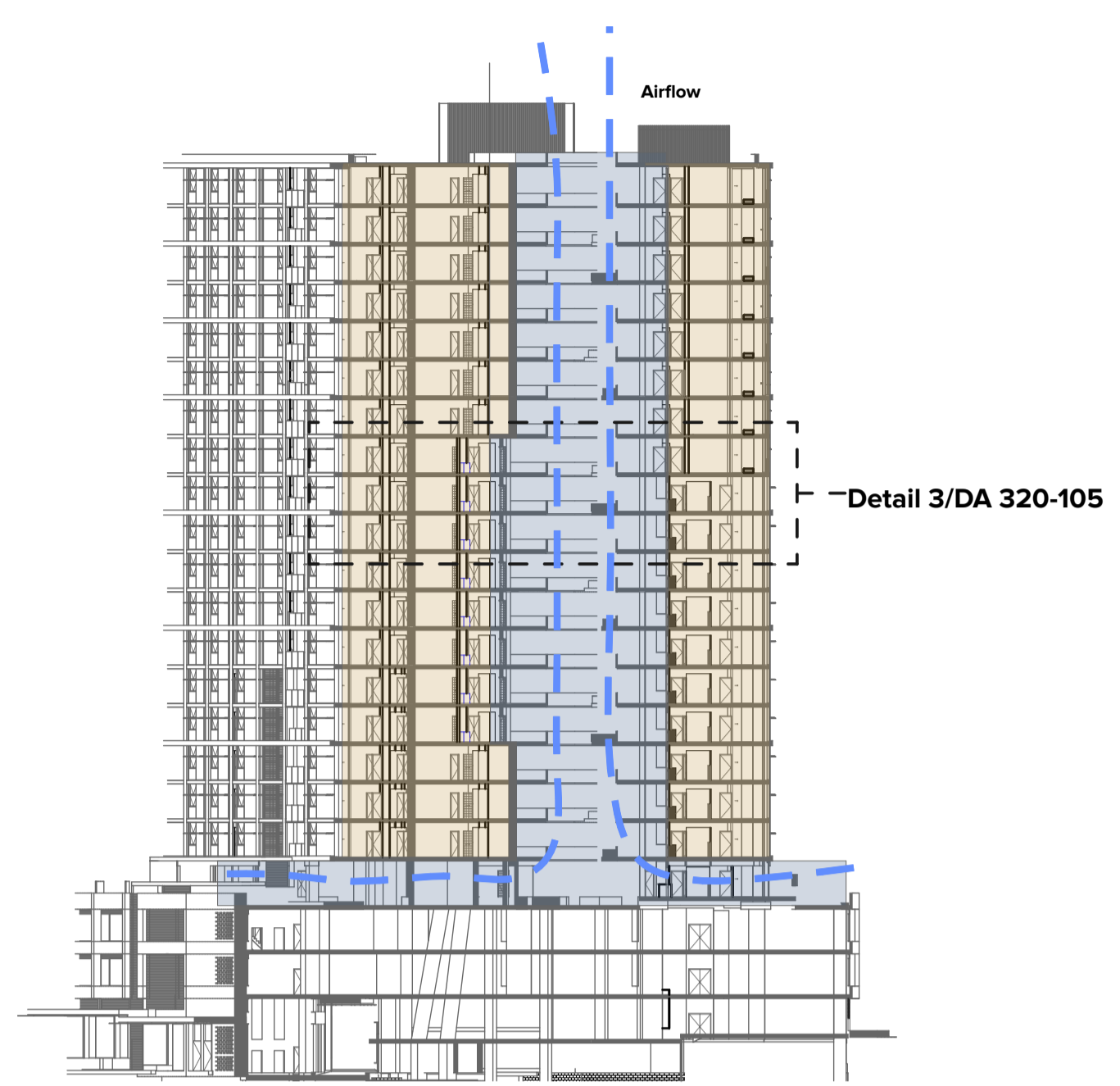
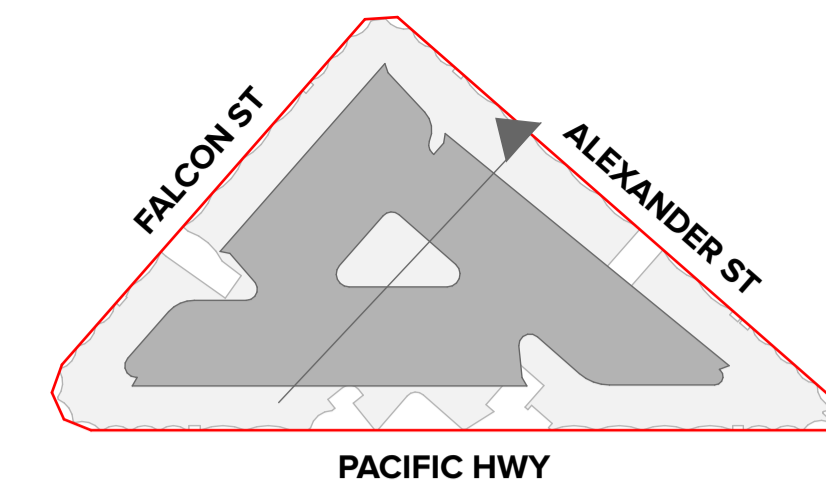
For Information

Drawing Title
Facade Sections
Facade Section FT03

TURNER

Level 7 ONE Oxford Street
 Darlinghurst NSW 2010
 AUSTRALIA

T +61 2 8668 0000
 F +61 2 8668 0066
 turnerinfo.com.au



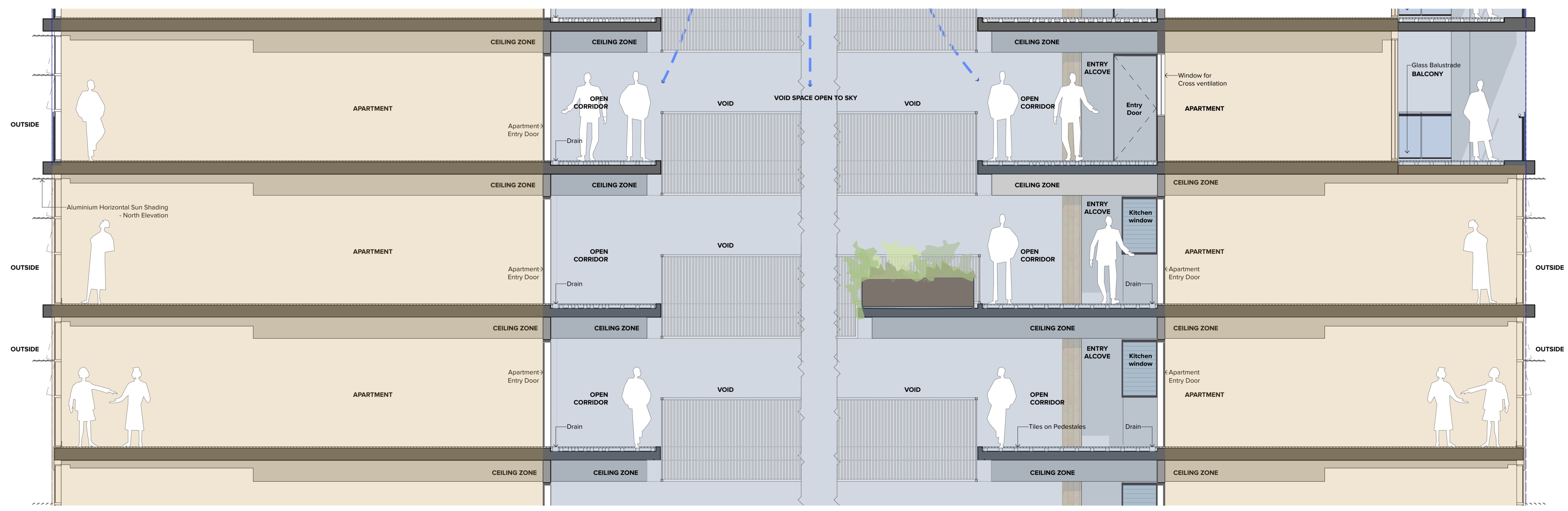
Detail 3/DA 320-105

1 Overall Section 1:500



2 Typical plan kitchen window 1:50

Department of Planning, Housing and Infrastructure
 NSW GOVERNMENT
 Issued under the Environmental Planning and Assessment Act 1979
 Approved Application No: SSD 66826207
 Approved on: 23 December 2024
 Signed: CA
 Sheet No: 10 of 11



3 Section 1:50

Open area
 Enclosed area

NOTES
 THIS DRAWING IS COPYRIGHT © OF TURNER. NO REPRODUCTION WITHOUT PERMISSION. UNLESS NOTED OTHERWISE THIS DRAWING IS NOT FOR CONSTRUCTION. ALL DIMENSIONS AND LEVELS ARE TO BE CHECKED ON SITE PRIOR TO THE COMMENCEMENT OF WORK. IN THE EVENT OF ANY DISCREPANCIES FOR CLARIFICATION BEFORE PROCEEDING WITH WORK, DRAWINGS ARE NOT TO BE SCALED. USE ONLY FIGURED DIMENSIONS. REFER TO CONSULTANT DOCUMENTATION FOR FURTHER INFORMATION. DWG, PDF AND BIM FILES ARE UNCONTROLLED DOCUMENTS AND ARE ISSUED FOR INFORMATION ONLY.

CLIENT
 Deicorp
 Level 3 161 Redfern Street Redfern NSW 2016

Rev	Date	Approved by	Revision Notes
01	18.01.24	KR	For Information
02	02.02.24	KR	For Information
03	07.03.24	KR	For Information
04	21.03.24	KR	For DA Issue

Project Title
 Fiveways Crows Nest
 391/423 Pacific Hwy Crows Nest NSW 2065 Australia
Drawing Title
 Facade Sections
 External Corridor System

Scale
 1:50, 1:500 @A1, 50% @A3
Project No. 19073
Dwg No. DA-320-106
Drawn by WC, CN, KR
Rev D

DLCC Quality Endorsement Company (ISO 9001:2015, Registration Number 25476)
 Nominated Architect Nicholas Turner (RIBA, AIA, APRA 901 994 811)

TURNER
 Level 7 ONE Oxford Street
 Darlinghurst NSW 2010
 AUSTRALIA
 T +61 2 8668 0000
 F +61 2 8668 0066
 turnerco.com.au



Podium Section 01
1:50

NOTES
THIS DRAWING IS COPYRIGHT © OF TURNER. NO REPRODUCTION WITHOUT PERMISSION. UNLESS NOTED OTHERWISE THIS DRAWING IS NOT FOR CONSTRUCTION. ALL DIMENSIONS AND LEVELS ARE TO BE CHECKED ON SITE PRIOR TO THE COMMENCEMENT OF WORK. IN THE EVENT OF ANY DISCREPANCIES FOR CLARIFICATION BEFORE PROCEEDING WITH WORK, DRAWINGS ARE NOT TO BE SCALED. USE ONLY FIGURED DIMENSIONS. REFER TO CONSULTANT DOCUMENTATION FOR FURTHER INFORMATION. IFC AND BIM FILES ARE UNCONTROLLED DOCUMENTS AND ARE ISSUED FOR INFORMATION ONLY.

CLIENT
Deicorp
Level 3 161 Redfern Street Redfern NSW
2016

Rev	Date	Approved by	Revision Notes
A	07.03.24	KR	For Information
B	21.03.24	KR	For DA Issue

Project Title
Fiveways Crows Nest
391/423 Pacific Hwy Crows Nest NSW 2065 Australia

Scale
1:50 @A1, 50%@A3
Project No. **19073**
W.C., C.N., K.R.
Dwg No. **DA-320-107**
Rev **B**

Drawing Title
Facade Sections
Podium Section Details 01

TURNER

Level 7 ONE Oxford Street
Sydney NSW 2010
AUSTRALIA
T +61 2 8568 0000
F +61 2 8568 0066
turnerinfo.com.au