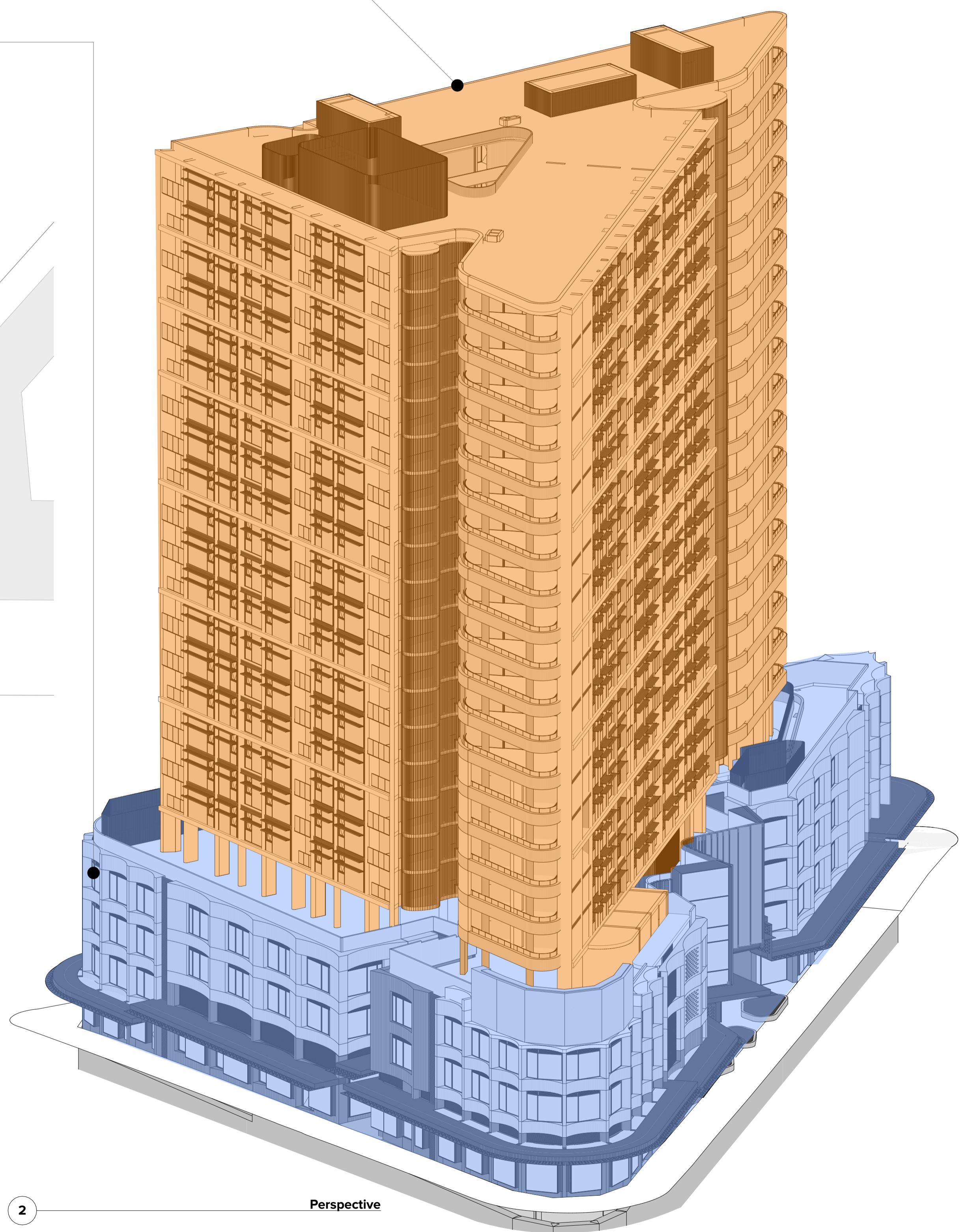


Residential Tower  
STAGE 2

Podium + Basements  
STAGE 1



1 Site Plan



2 Perspective

**NOTES**  
THIS DRAWING IS COPYRIGHT © OF TURNER. NO REPRODUCTION WITHOUT PERMISSION. UNLESS NOTED OTHERWISE THIS DRAWING IS NOT FOR CONSTRUCTION. ALL DIMENSIONS AND LEVELS ARE TO BE CHECKED ON SITE PRIOR TO THE COMMENCEMENT OF WORK. INFORM TURNER OF ANY DISCREPANCIES FOR CLARIFICATION BEFORE PROCEEDING WITH WORK. DRAWINGS ARE NOT TO BE SCALED. USE ONLY FIGURED DIMENSIONS. REFER TO CONSULTANT DOCUMENTATION FOR FURTHER INFORMATION. DWG, PC AND BIM FILES ARE UNCONTROLLED DOCUMENTS AND ARE ISSUED FOR INFORMATION ONLY.

**CLIENT**  
**Deicorp**  
Level 3 161 Redfern Street Redfern NSW  
2016

Rev	Date	Approved by	Revision Notes
A	27.10.23	KR	For Review
B	07.03.24	KR	For Information
C	21.03.24	KR	For DA Issue

**Project Title**  
**Fiveways Crows Nest**  
391/423 Pacific Hwy Crows Nest NSW 2065 Australia

**Drawing Title**  
**Staging Plan**  
**Staging Diagrams**

**Scale**  
@A1: 50%@A3

**Project No.** 19073

**Dwg No.** DA-805-001

**Drawn by** WC

**Rev** C

**North** ↑

DLCC Quality Endorsed Company (ISO 9001:2015, Registration Number 25476)  
Notified Architect Nicholas Turner (NSW, APR 90-90439-91)

**TURNER**

Level 7 ONE Oxford Street  
Sydney NSW 2010  
AUSTRALIA

T +61 2 8668 0000  
F +61 2 8668 0066  
turnerco.com.au