

Multiplex for  
UNSW Biological Sciences Project

**S96 (SSD 6674)**  
**Architectural Design Statement**

27 October 2016

**WOODS  
BAGOT™**

## Contents

01	Executive Summary	3
02	Extent of Works	4
03	Building Form	5
04	Building Form	6
05	Overshadowing	7
06	North Facade & Awning	8
07	North Facade & Awning	9
08	North Facade & Awning	10
09	West Facade	11
10	East Facade	12
11	South Facade	13
12	Ground Floor	14
13	Ground Floor	15
14	Landscaping	16
15	Rooftop Plant	17
16	Rooftop Plant	18
17	Sections	19

# 01

## Executive Summary

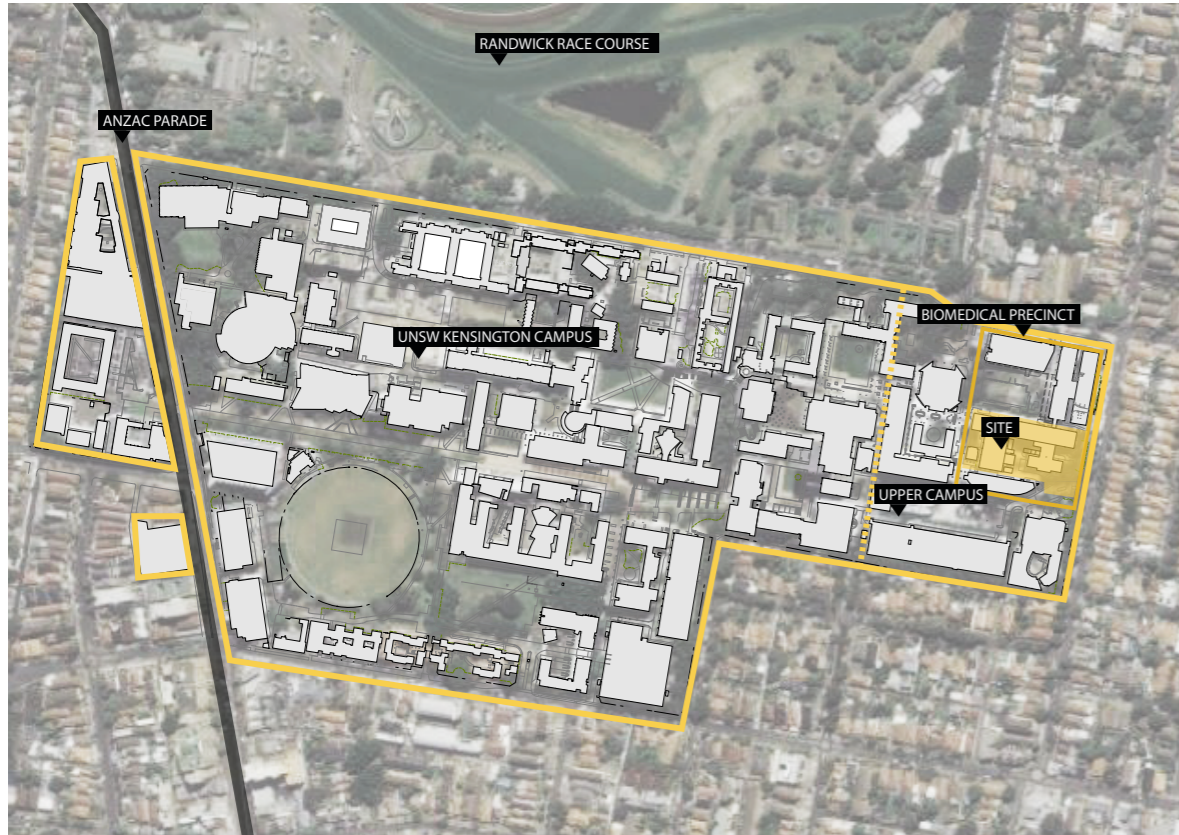


Fig. 1 - Location of the site



Fig. 2 - Consented SSD 6674, looking from Botany Street, Gate 11

This Architectural Design Statement forms part of a combined application to further develop the UNSW Biological Sciences precinct.

The proposed application will consist of a newly proposed SSD and a Section 96 application.

The diagram in Figure 3 shows how the proposed applications will be split. This is as follows:

### S96 Amendments to Building D26 proposals

- Ground Floor Layout
- Facades
- Awning and Terrace
- Rooftop plant enclosure including Levels 7, 8 and Roof

### SSD Application

- Proposals for Internal layouts for Lower Ground Floor and Levels 1, 2, 3, 4, 5 and 6

### S96 Modifications

This report covers the S96 component.

The project is broken into 2 Stages where Stage 1 is the construction of the new Building E26 and Stage 2 is the refurbishment of the existing D26 building. While Stage 1 is currently in construction Stage 2 has undergone a period of Brief and Design development since the consented scheme was approved in August 2015. The evolution has resulted in a more detailed understanding of the building program and services strategy.

This has led to the requirement for amendments to the consented scheme as well as the application for internal layouts not covered under the Stage 1 SSD.

The proposal now includes a modified rooftop plant enclosure to house additional plant required to service the program. This consists of additional part storeys at Level 8.

The facade continues to reflect the vertical

language established within the consented scheme and is now arranged to address the layouts.

The awning is lowered by one level to high level Ground Floor to provide better weather shelter and has a modified material approach to reference colours used in Building E26.

The Ground Floor layout has been revised to suit university program needs with a reduction in retail and increase in teaching spaces.

The terrace facing Michael Birt Gardens is amended to suit the revised Ground Floor layout and to provide a vibrant environment with stepped planters dividing the raised terrace with the garden area.

The following pages describe the proposed amendments in greater detail.

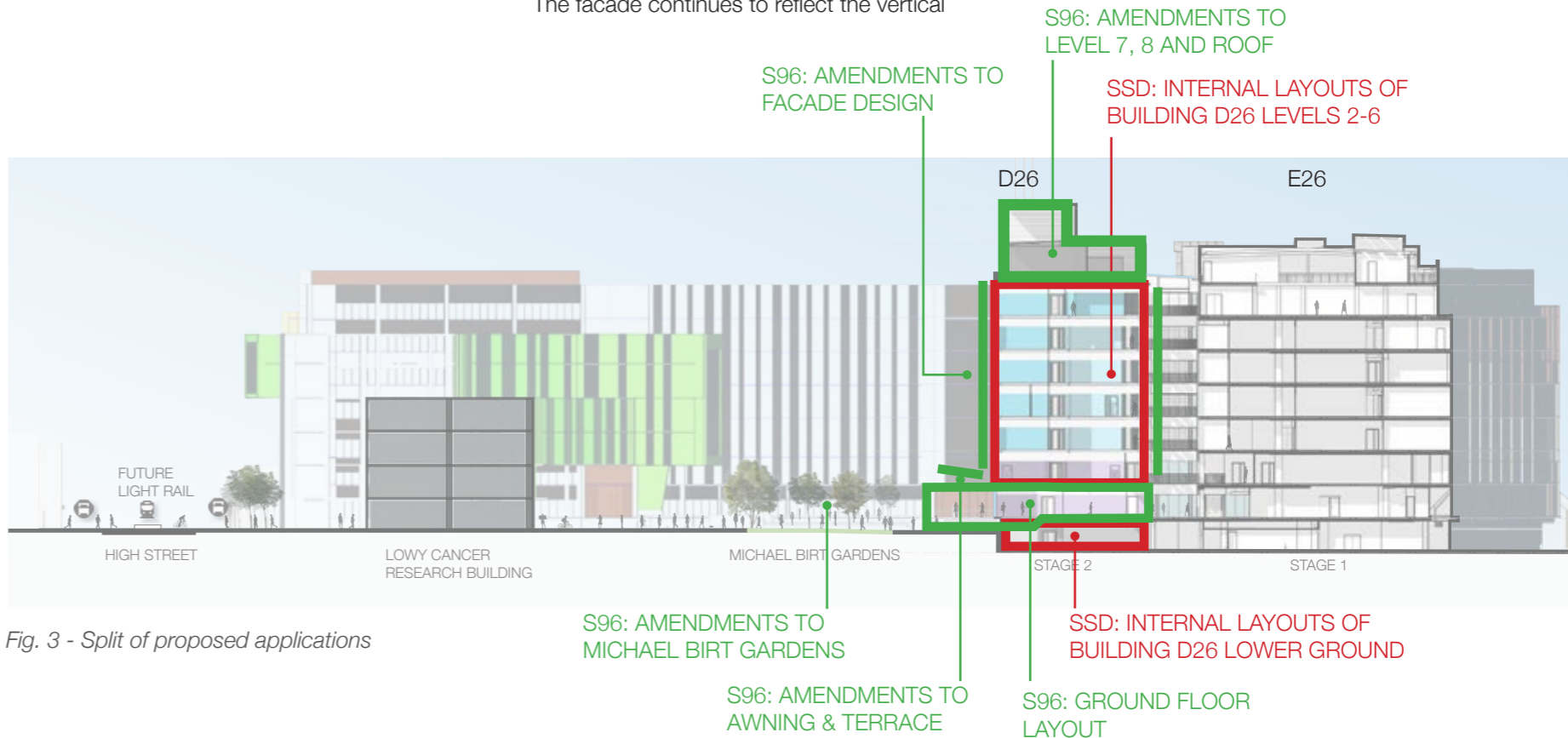
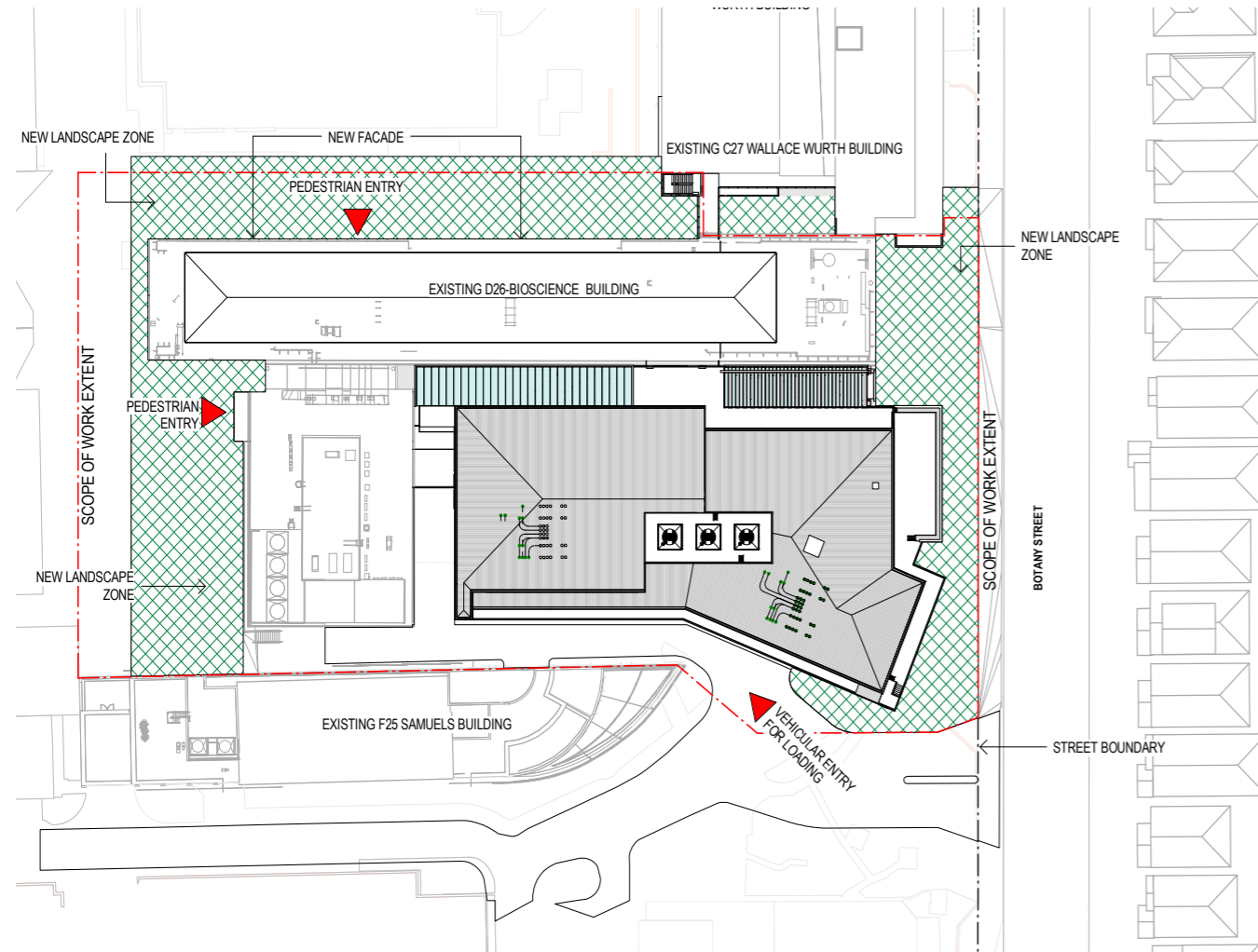


Fig. 3 - Split of proposed applications

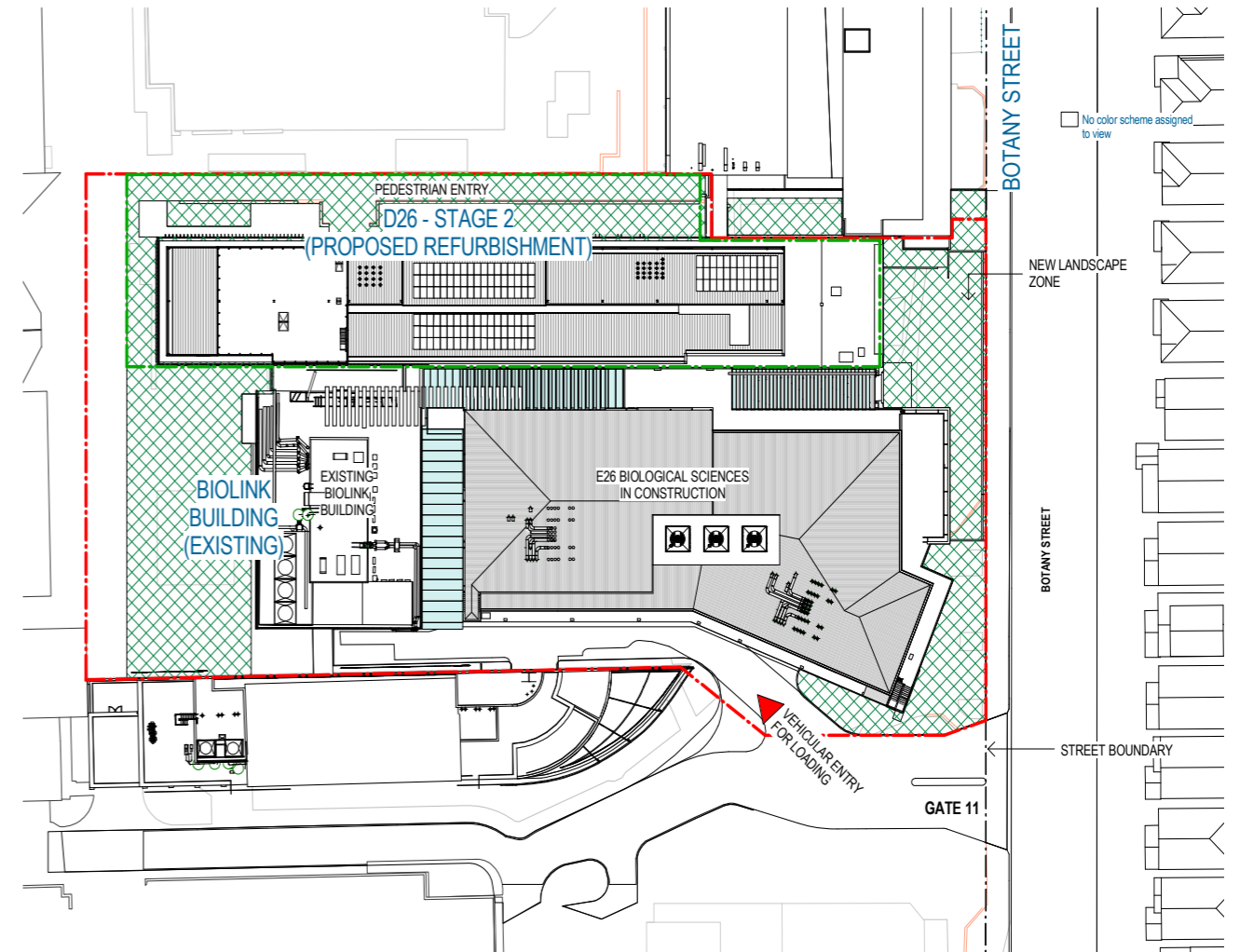
# 02

## Extent of Works

### Stage 1 SSD Site Plan



### S96 Proposed Site Plan



### Proposed Amendments

The site extent of works remains the same as the Stage 1 SSD.

## Stage 1 SSD Building Form

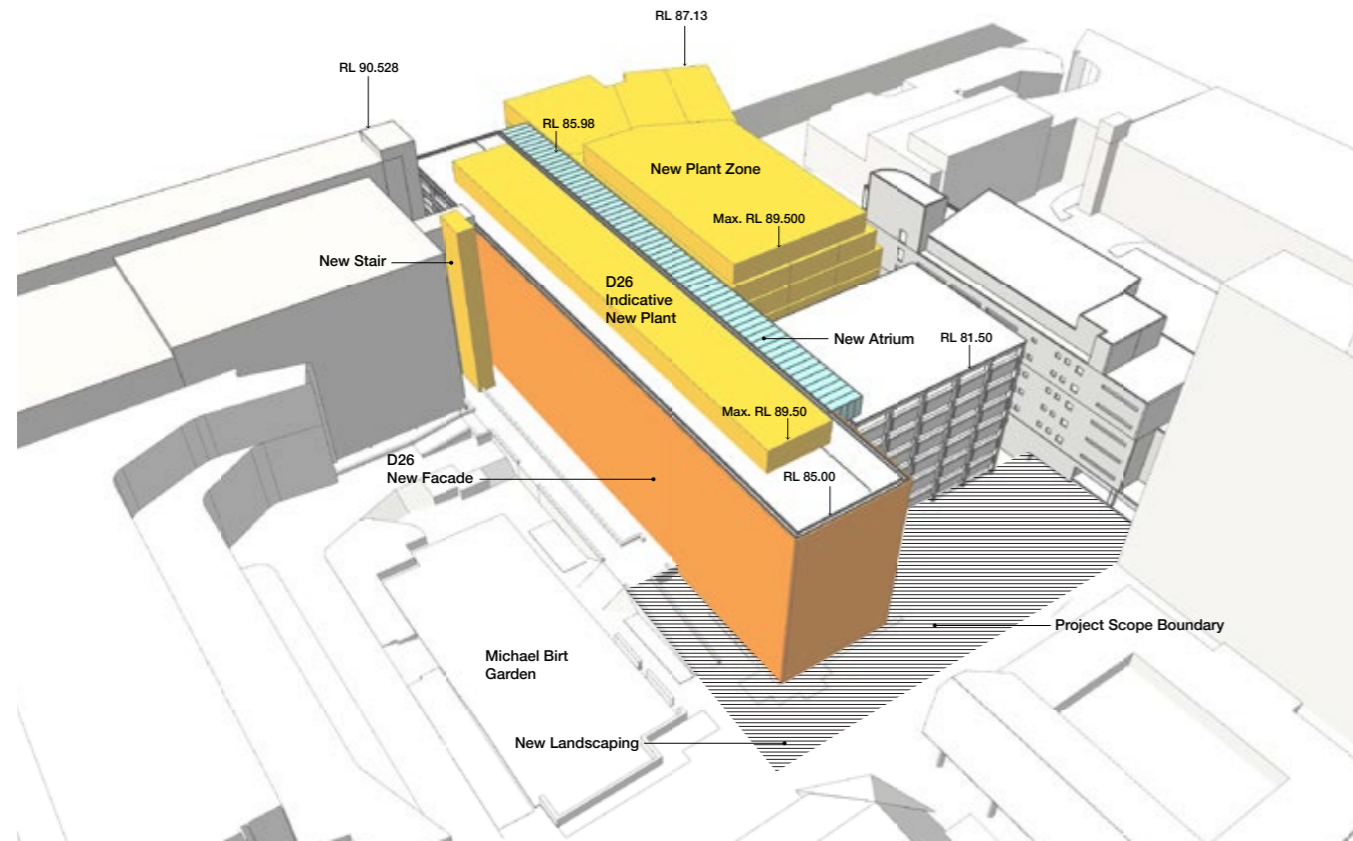


Fig. 4 - Consented Building Form (Aerial view from northwest)

## Proposed Amendments

The amendments to the Building Form proposed are to the Level 7 and 8 Plant room of Building D26.

As D26 is Stage 2 of the works, the project has undergone a Brief and Design development since the consented scheme was approved in August 2015. The evolution has resulted in a more detailed understanding of the building program and services strategy. As a result the plant is required to have greater area and volume.

The Level 7 Plant now extends close to the building perimeter and with the amount setback and the reduced level from Botany street remaining as per the consented scheme.

Additional part levels to Level 8 contain further plant and are setback from the building edges at the east end west ends to minimise visual impact on Botany Street and

inner campus.

The escape stair previously consented between Wallace Wirth Building and Building D26 is now no longer required and shown as an amendment.

## S96 Proposed Building Form

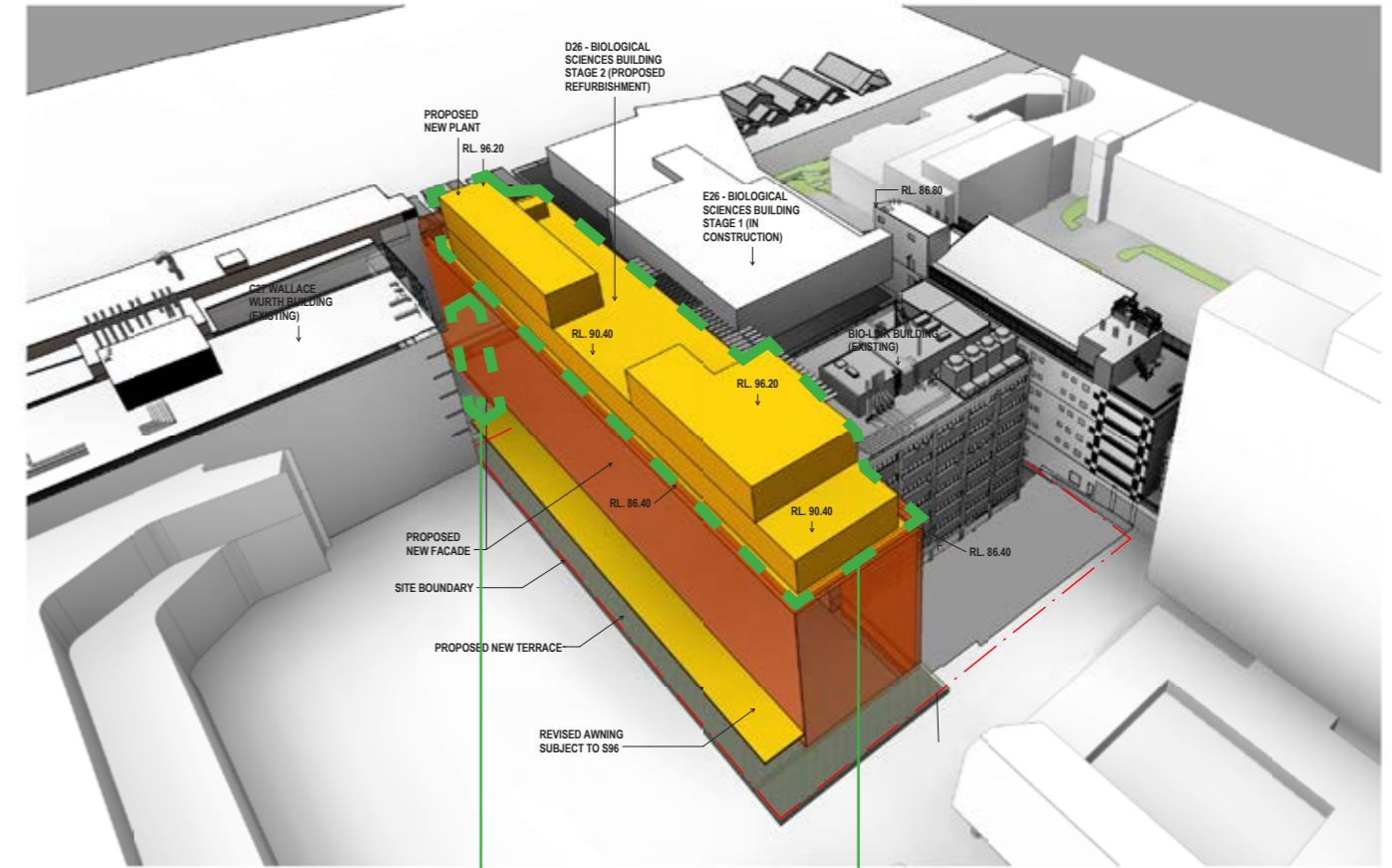


Fig. 5 - Proposed Amended Building Form (Aerial view from northwest)

S96: ESCAPE STAIR NO LONGER REQUIRED

S96: PROPOSED AMENDMENTS TO ROOF ENCLOSURE

# 04

## Building Form

### Stage 1 SSD Building Form

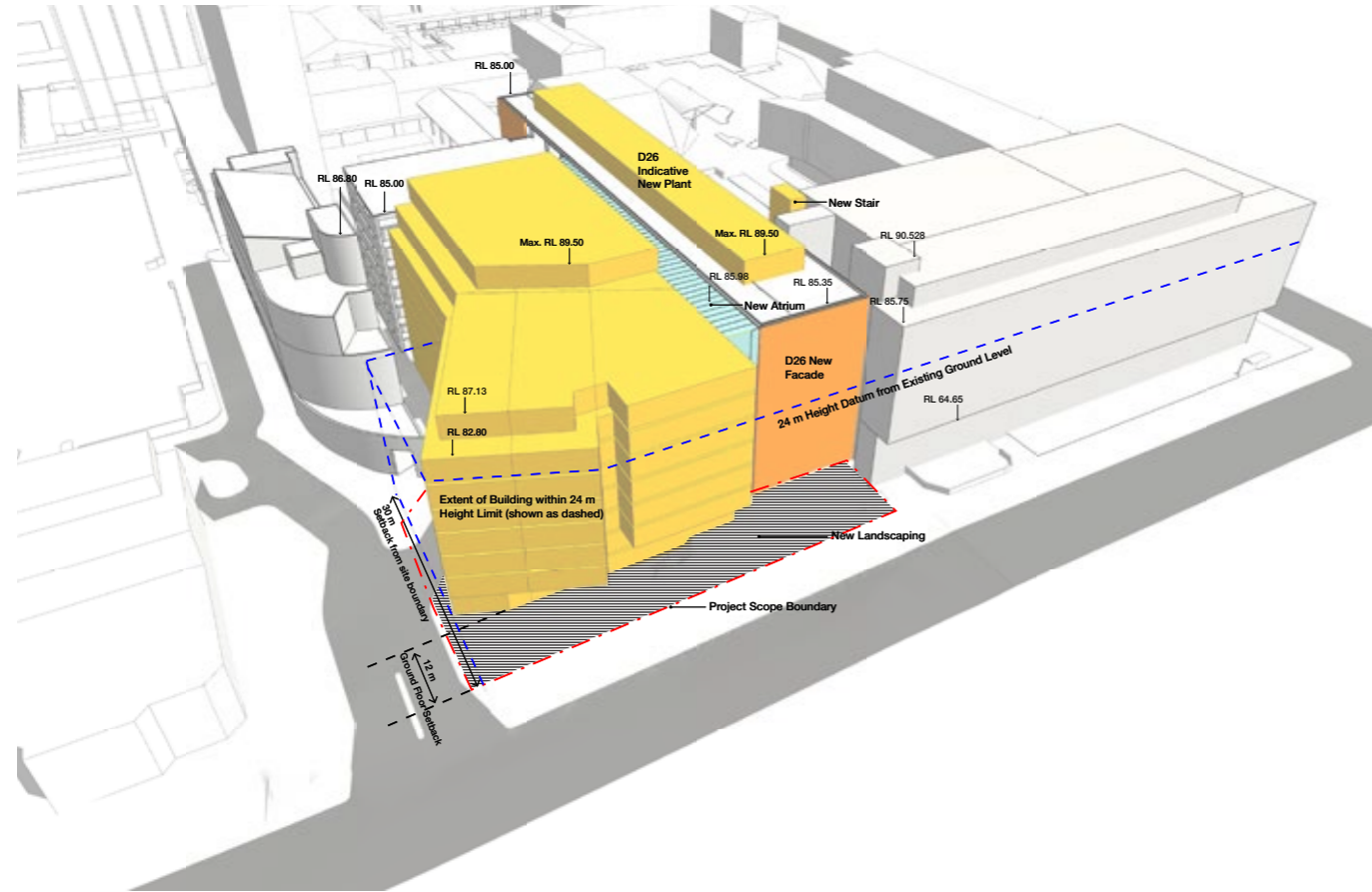


Fig. 6 - Consented Building Form (Aerial view from southeast)

### S96 Proposed Building Form

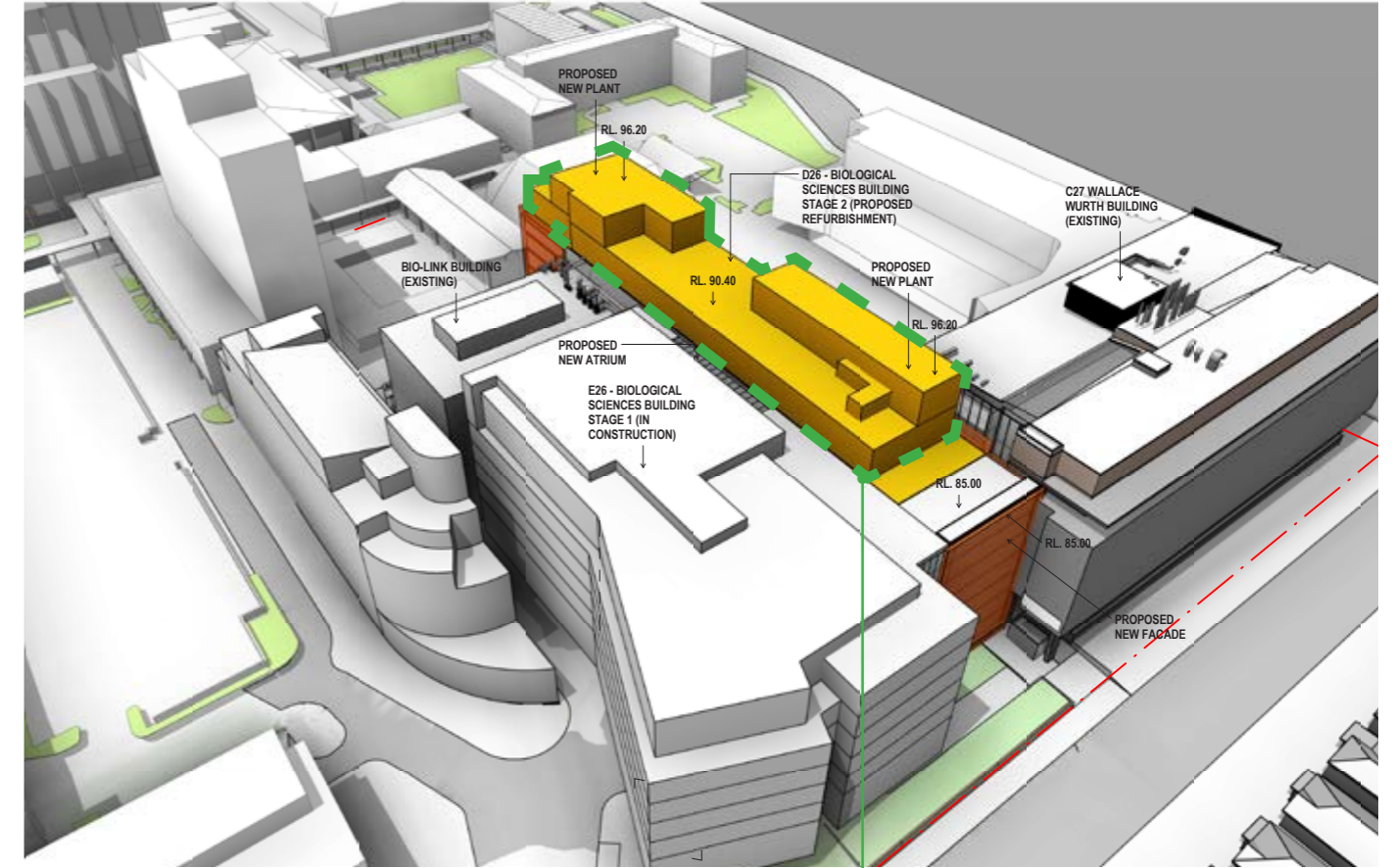


Fig. 7 - Proposed S96 Building Form (Aerial view from southeast)

S96: PROPOSED AMENDMENTS TO ROOF ENCLOSURE

# 05

## Overshadowing

### Stage 1 SSD Building Form

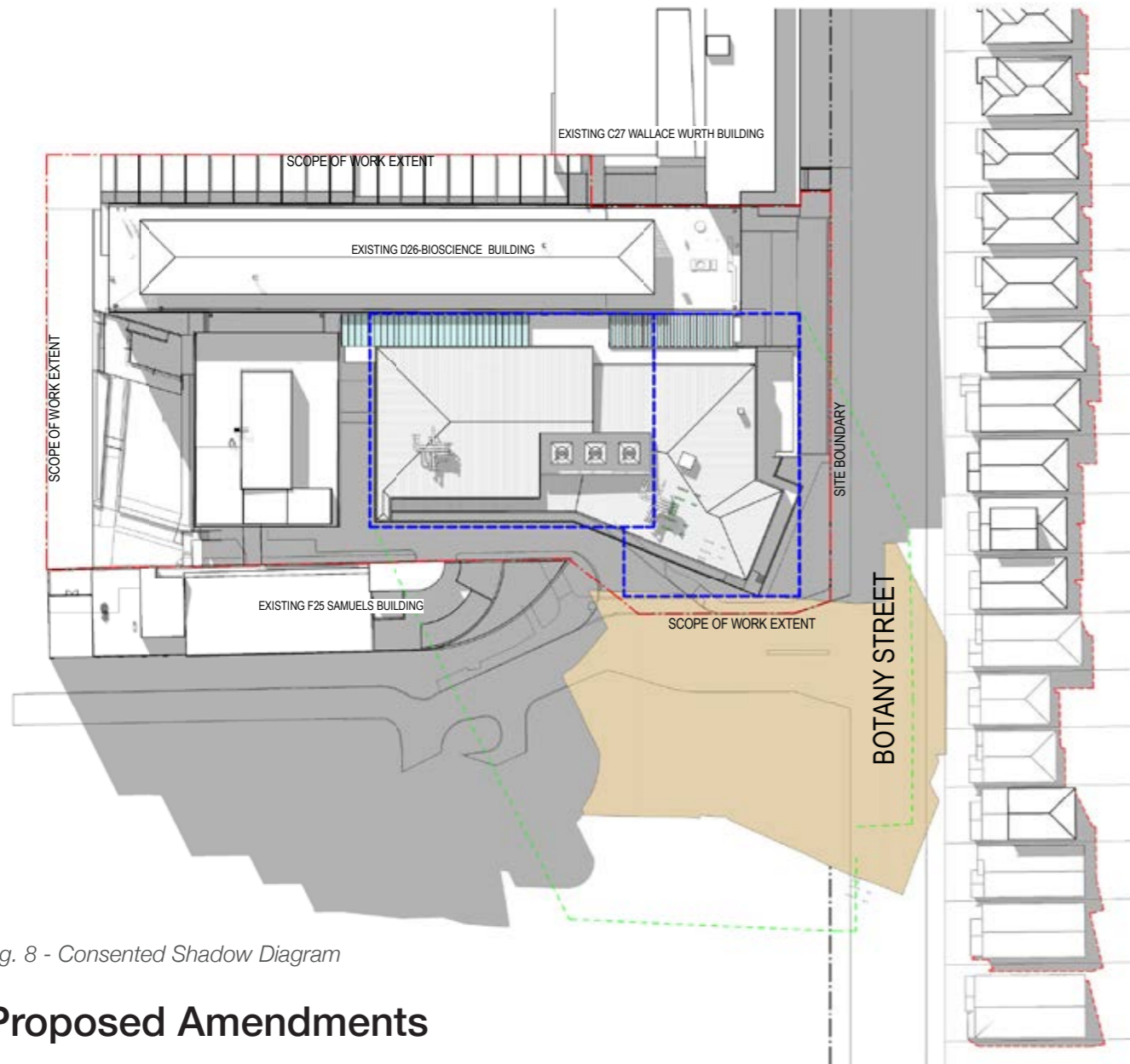


Fig. 8 - Consented Shadow Diagram

### Proposed Amendments

The additional mass at Level 8 to extend the plant room doesn't have any significant impact on the overshadowing of neighbouring buildings as demonstrated in the diagrams above.

Due to the northern location of Building D26 in relation to Building E26, some overshadowing occurs to the northern part of Biolink Building and Building E26.

For further shadow diagrams refer to the architectural drawings.

### S96 Proposed Building Form

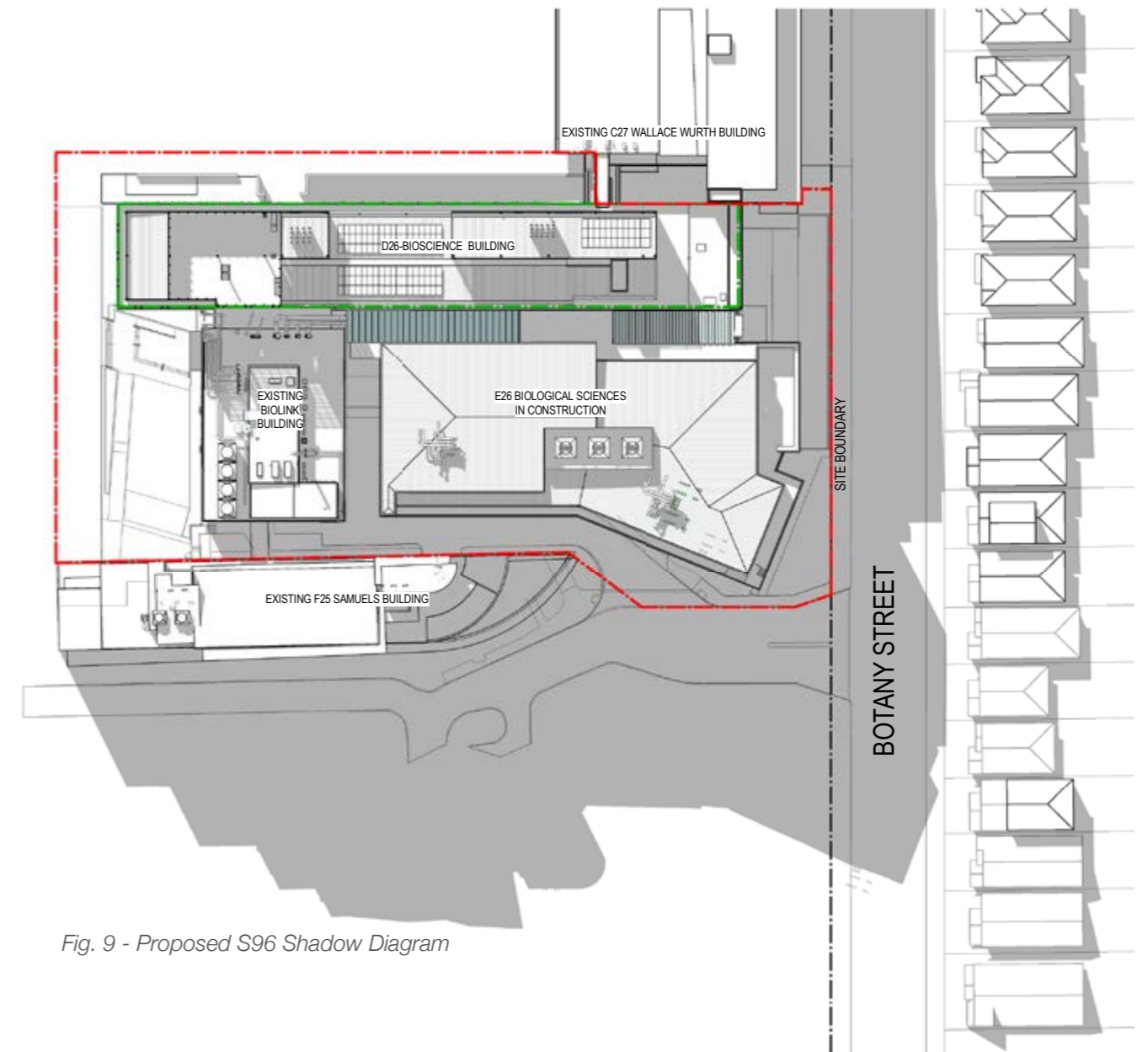


Fig. 9 - Proposed S96 Shadow Diagram

# 06

## North Facade & Awning

### Stage 1 SSD North Facade



Fig. 10 - Consented North Facade

### Proposed Amendments

The facade concept of continuing the vertical articulation found in Michael Birt Gardens is retained and continued in the amended facade.

The facade has been developed to address the program in the building now developed as part of the Stage 2 works.

The proposed facade consists of aluminium and glazed panels with vertical solar shading fins. From the junction with Wallace Wurth to the middle of the facade the panels are predominantly aluminium with vertical full height glazed strips addressing the laboratory support function behind.

Towards the west where the function is workplace-based research the pattern gradates to a more glazed solution with more vertical fins to shade the glass.

A neutral palette allows the colourful Lowy building to remain as a vibrant feature of the Gardens with D26

muted to avoid competing with the adjoining buildings. It also enhances the colour of the awning.

The awning is modified to by lowering the canopy line from top of Level 1 to top of Ground Floor. This provides better shading and weather protection and also provides a more balanced facade composition creating a bottom-middle-top relationship.

The material of awning soffit is proposed to be an aluminium panel and coloured to reference the terracotta found in the E26 facade.

The consented step in the awning is referenced in the proposed amendments through a change in the inclination angle of the awning which is positioned to frame the main entrance.

The rooftop plant enclosure is included and will be the same material and expression as the rooftop plant consented for Building E26.

### Proposed S96 Amended Facade



Fig. 11 - Proposed S96 Amended North Facade



Fig. 12 - Existing adjacent buildings (Lowy Centre, left, and Wallace Wurth) - Vertical articulation

# 07

## North Facade & Awning

### Stage 1 SSD

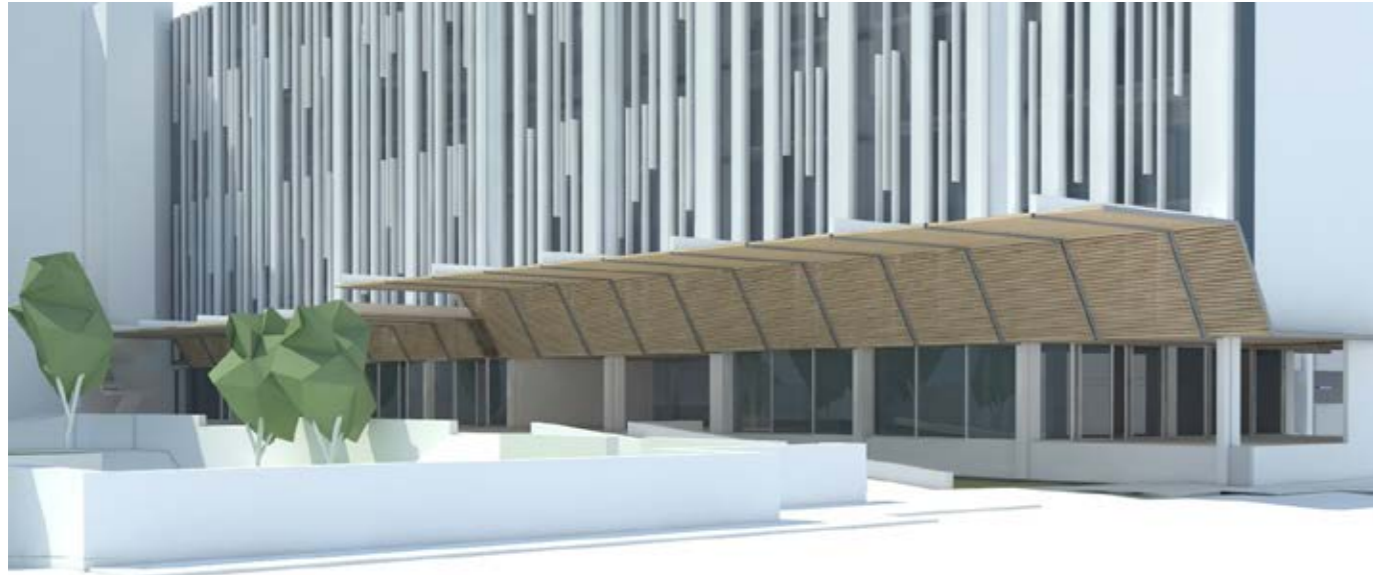


Fig. 13 - Consented Awning



### Proposed S96 Amendments



Fig. 14 - Proposed Amended Awning



Fig. 15 - Proposed Amended Awning (Terrace View)

### Stage 1 SSD

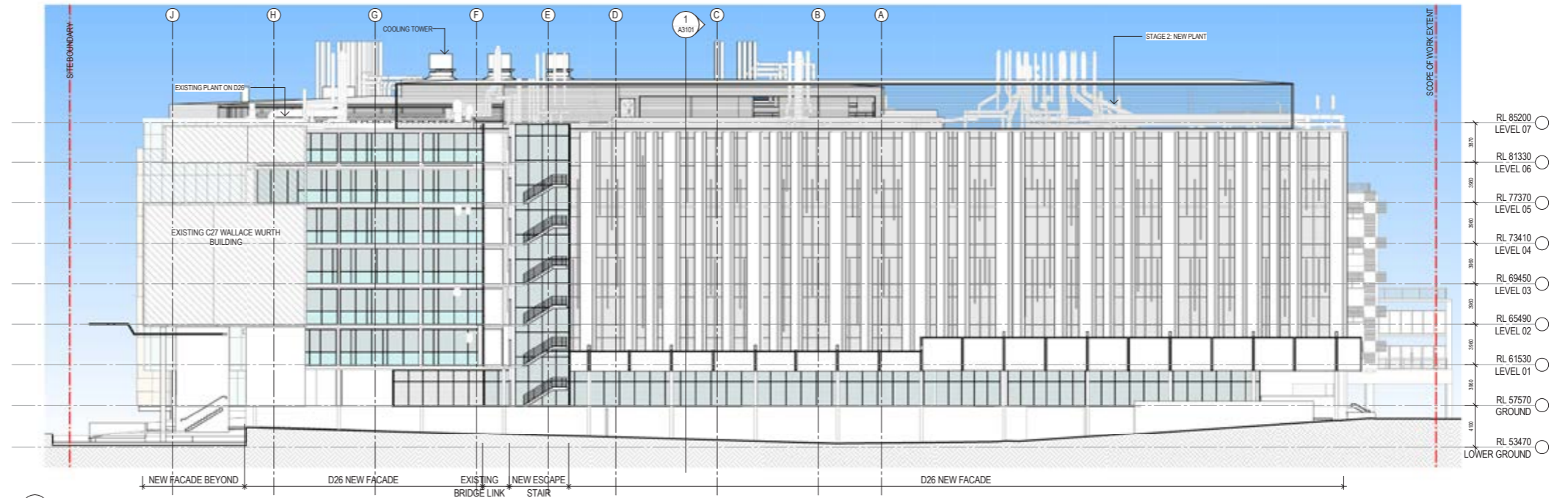


Fig. 16 - Consented North Elevation

### Proposed S96 Amendments

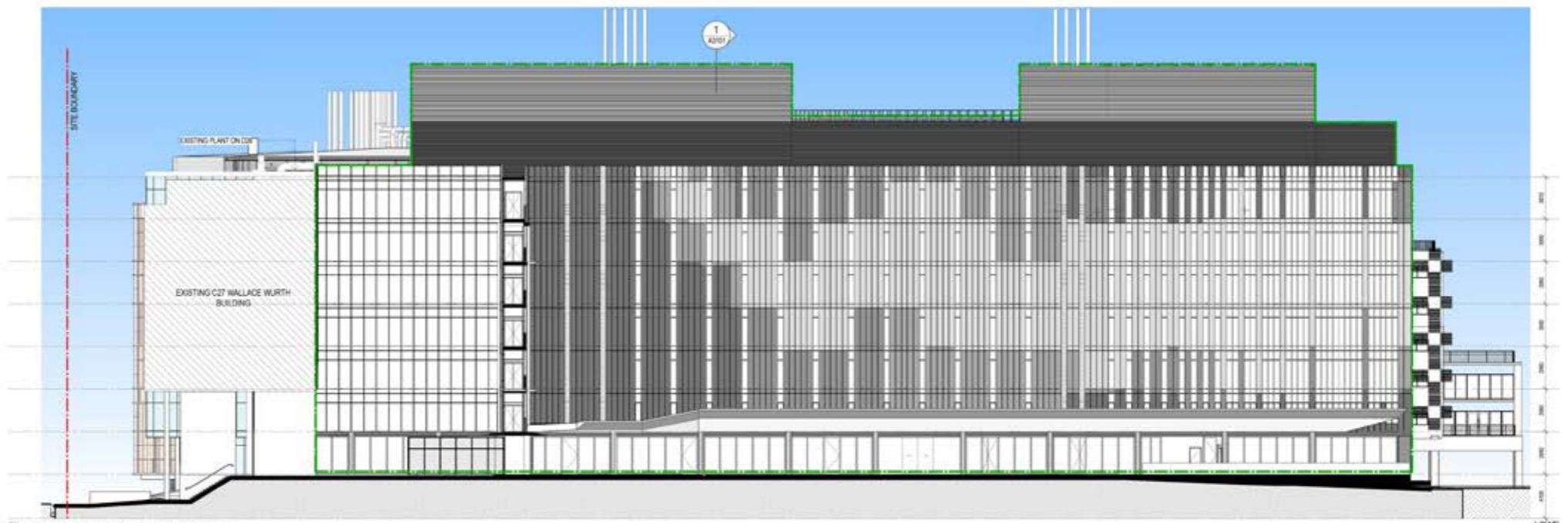


Fig. 17 - Proposed S96 Amended North Elevation

### Stage 1 SSD

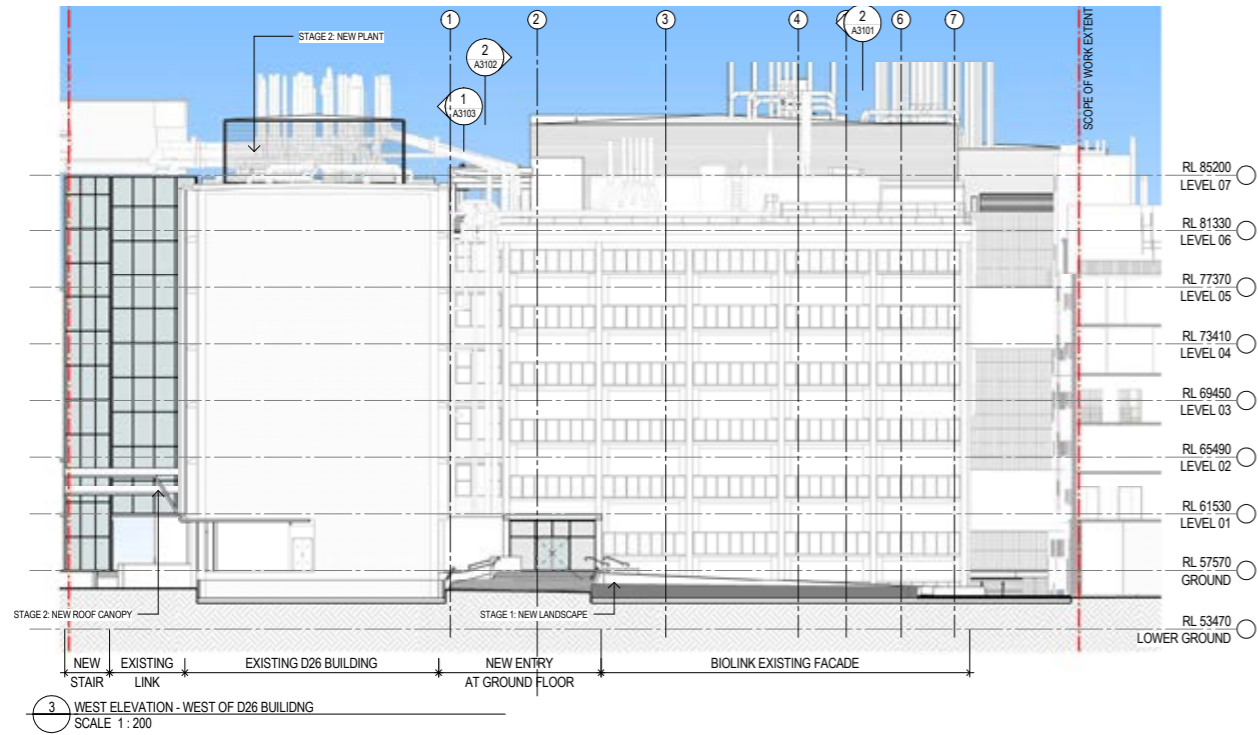


Fig. 18 - Consented West Elevation

### Proposed S96 Amendments

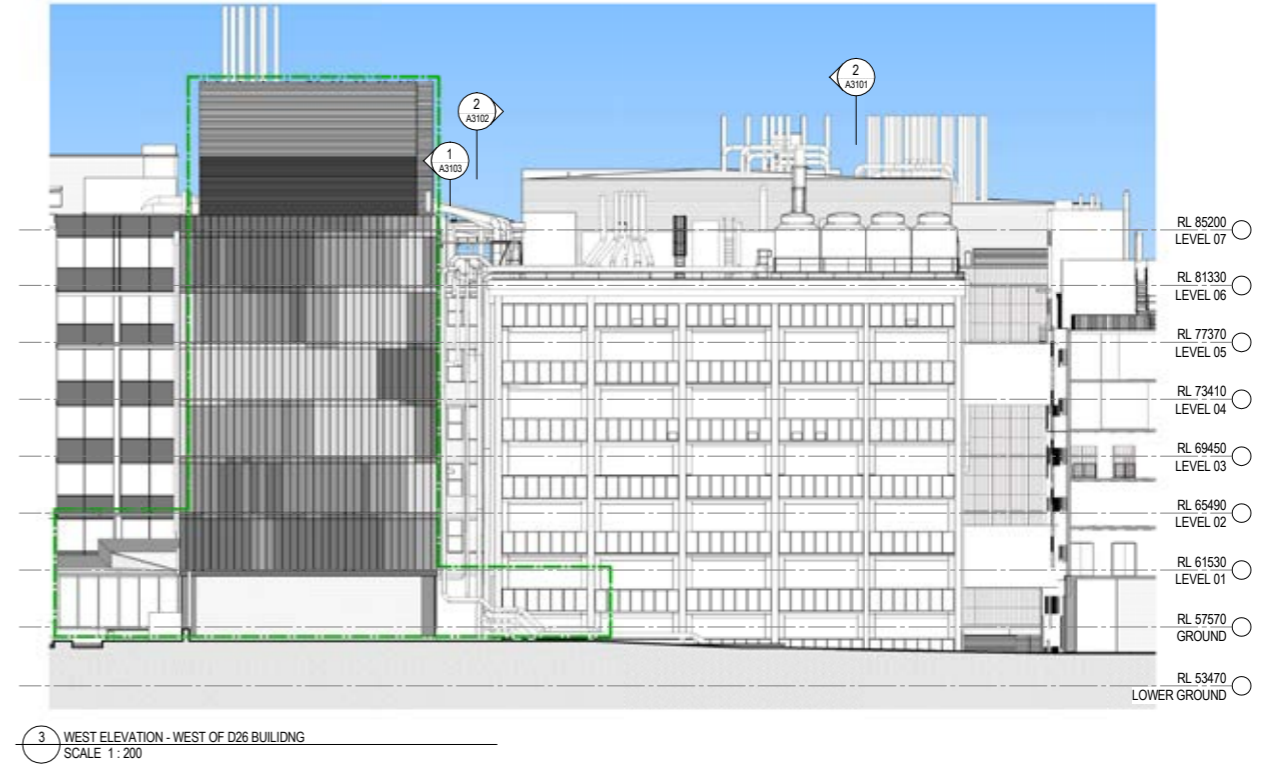


Fig. 19 - Proposed S96 Amended West Elevation

### Proposed S96 Amendments

The consented West facade retained the existing red brickwork. Further analysis led to the conclusion that the brickwork was in disrepair and required replacement in the interest of the building life cycle.

The amendment proposes to remove the existing brickwork and use aluminium cladding in continuation of the north facade language.

The base is designed with a dark grey terracotta cladding for durability and to continue the base-middle-top composition established on the north facade.



Fig. 20 - Proposed West Facade from northwest



Fig. 21 - Proposed West Facade from southwest

# 10

## East Facade

### Stage 1 SSD

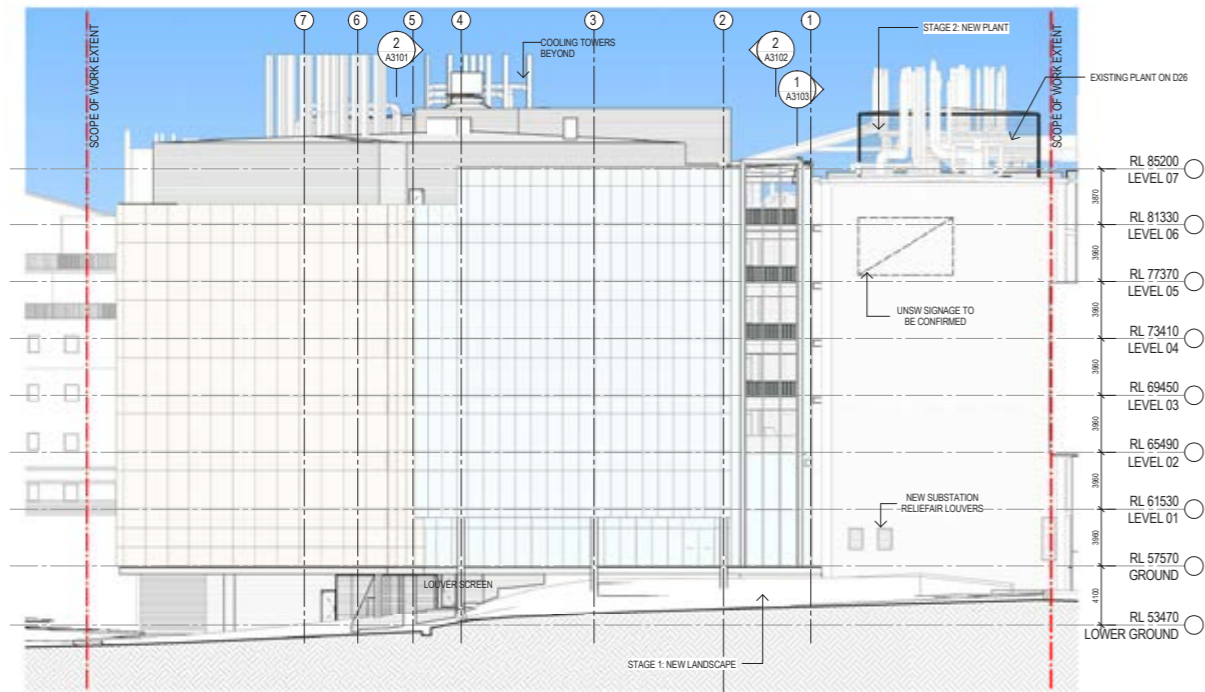


Fig. 22 - Consented East Elevation

### Proposed S96 Amendments

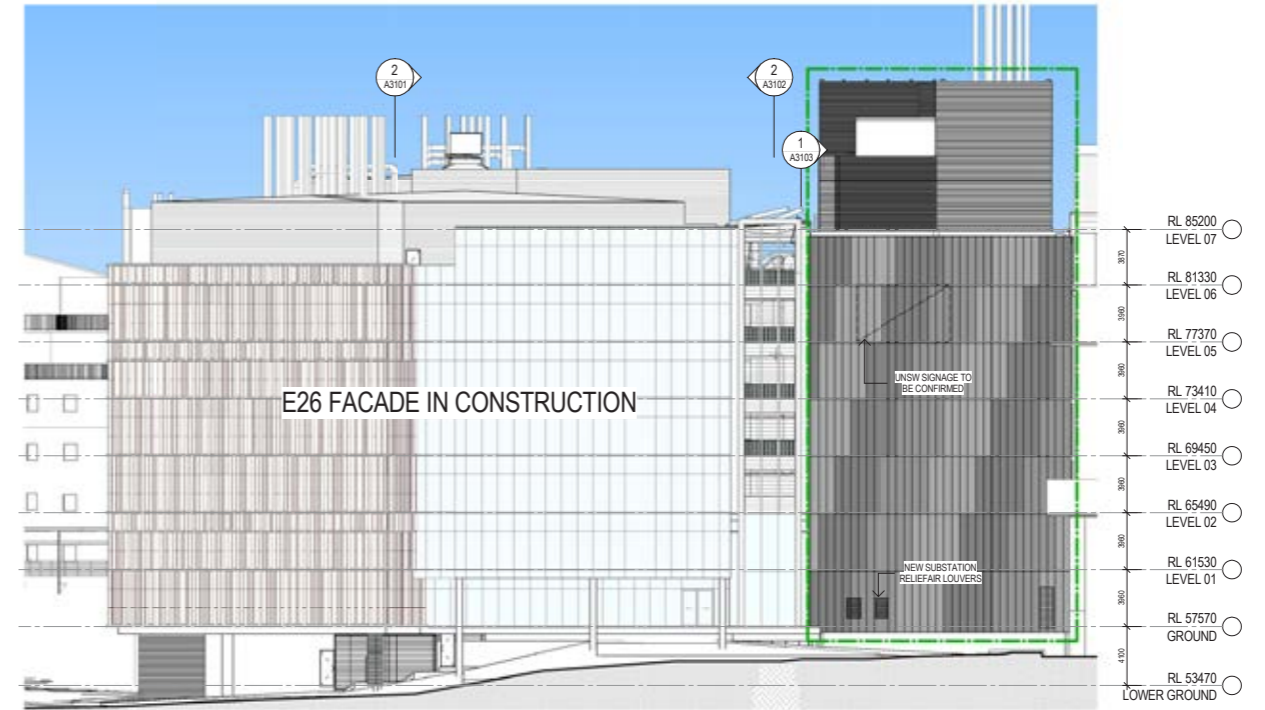


Fig. 23 - Proposed S96 Amended East Elevation

### Proposed S96 Amendments

As with the West Facade the consented East facade retained the existing red brickwork, was in disrepair and required replacement.

The amendment proposes to remove the existing brickwork and use terracotta cladding with a similar vertical pattern as with the other facades.

Terracotta is chosen to complement the Terracotta used on Building E26 facade but retains the grey tonal palette to identify itself as D26 in keeping with the other facades of the building.



Fig. 24 - Proposed East Facade from Botany Street (impression) not to scale

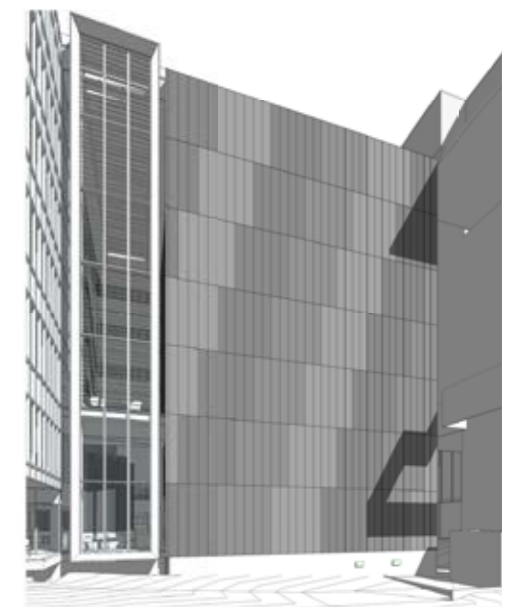


Fig. 25 - Proposed East Facade cladding pattern