

# Façade Design

## Cladding Identities

### General Concept Cladding Identities

The Block 4N massing can be divided into six component parts; podium, neck, Hotel tower, Commercial Tower, Residential Tower and the Residential Atrium. Each volume has its own cladding identity. The facade design adheres to Concept Masterplan principles that include the City Datum lines and recessed neck level.







The neck and podium facades have been designed as a curtain wall with additional horizontal metal shading fins at regular spacings to mitigate against heat gain at the top of the building. The elevations are characterised by these strong horizontal lines that are carried through from the retained Australian hotel heritage structure, the most prominent of which is the awning. The horizontal emphasis is punctuated by fin walls that frame entrances and repeat the technique employed on Blocks 1 and 4S.

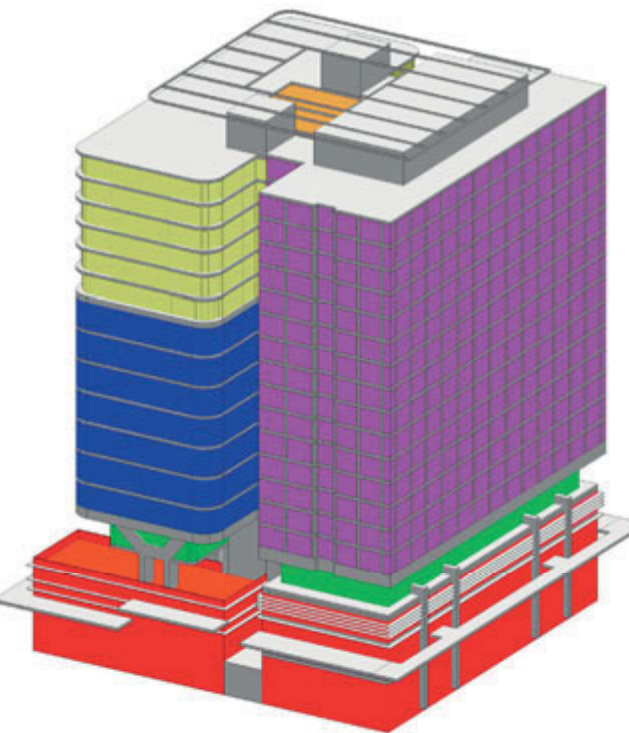
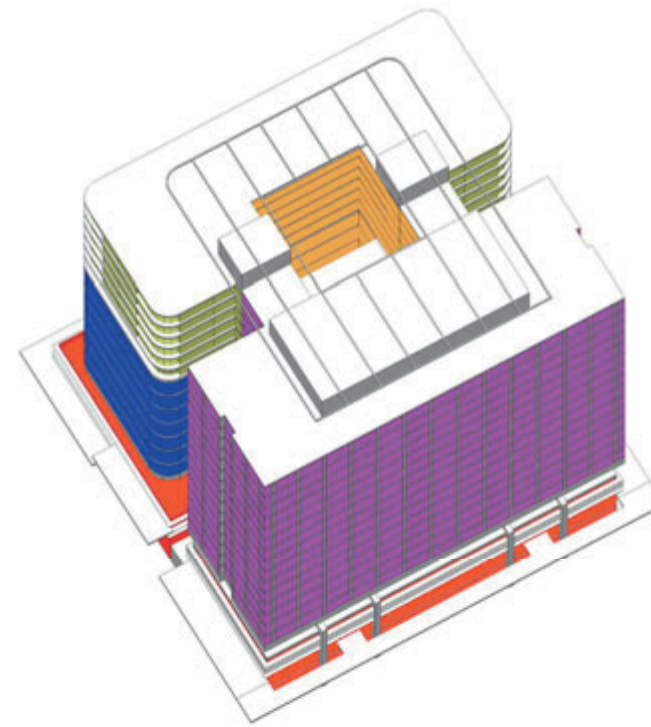
The typical tower Cladding is characterised by three main zones;

The Hotel Tower which is characterised by metal fins, has a metal profile around each individual hotel unit with infills of different glass systems (clear, textured and glass shadow boxes).

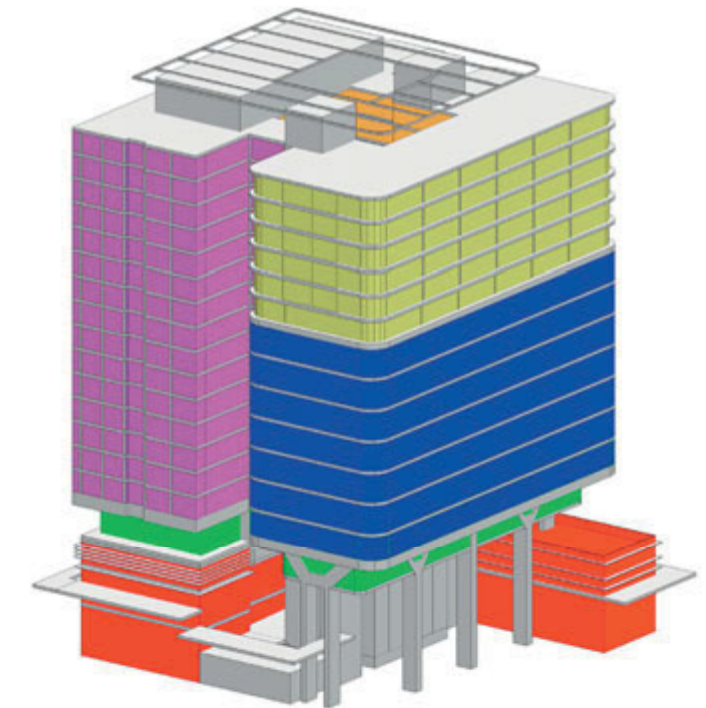
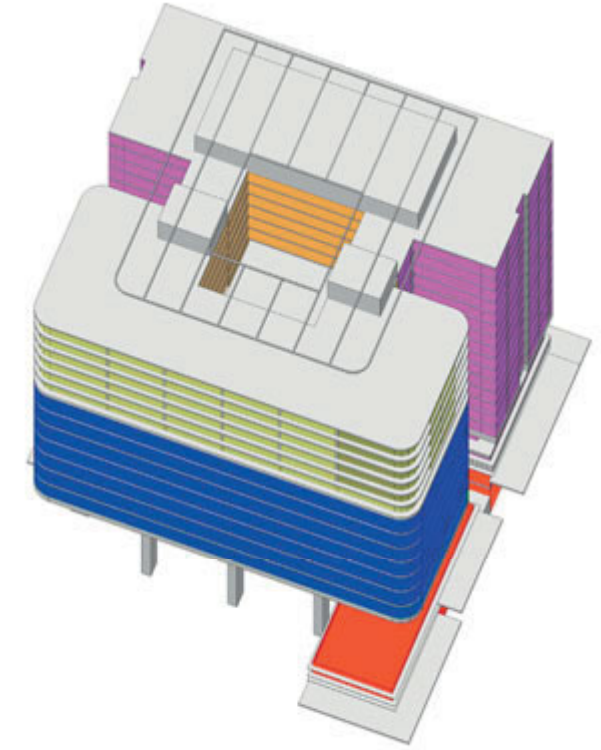
The Second zone is the Office and Childcare Tower, characterised by continuous, horizontally-profiled, lightweight cladding elements which form a solid upstand. The remaining glass is shaded by a horizontal light shelf which protrudes from the glass line. The third and last zone, which houses the residential units, is based on the design intended for the residential facades of Block 1 and consists of a solid spandrel band that extends 800mm above FFL with a glazed ribbon above which incorporates paired light shelf projections as solar gain and privacy counter measures. The horizontal emphasis of the ribbon window is further enhanced by ensuring that all mullions are located behind the glass plane.

Within the building massing, a residential Atrium has been designed to provide an outdoor break-out space for residents. This atrium is covered by a permanently open roof pergola which allows unobstructed views towards the sky.

-  Hotel Facade (Cladding type H)
-  Office / Childcare Facade (Cladding type O)
-  Residential Facade (Cladding type R)
-  Atrium Facade
-  Neck Facade
-  Podium Facade



Block 1 - South-East corner, nts



Block 1 - North-West corner, nts