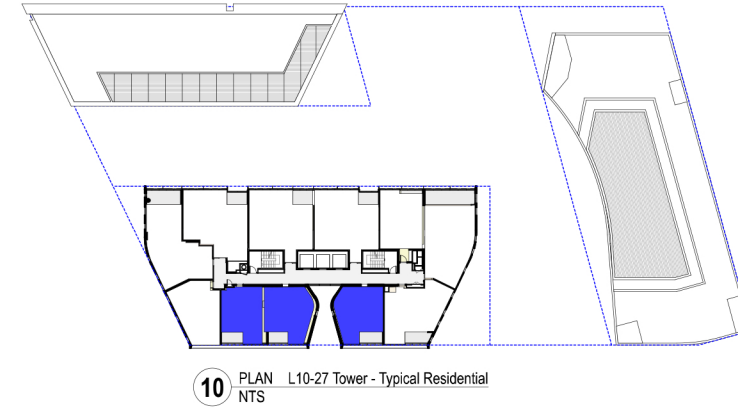
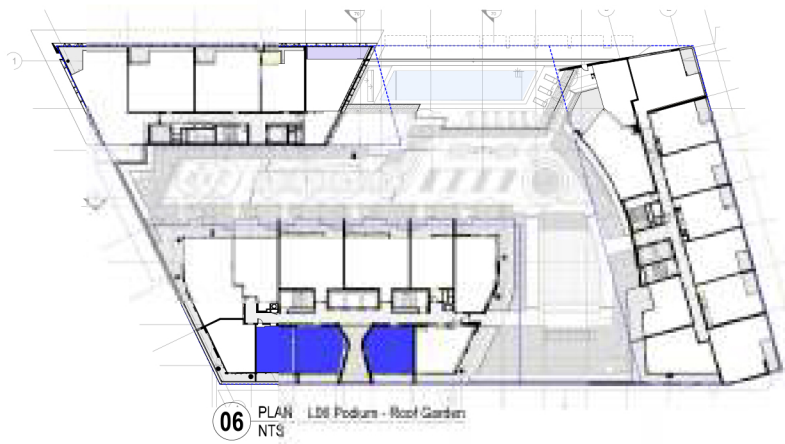




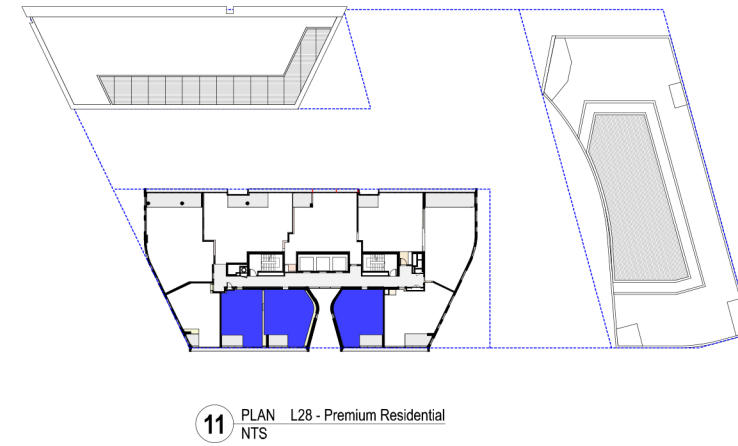
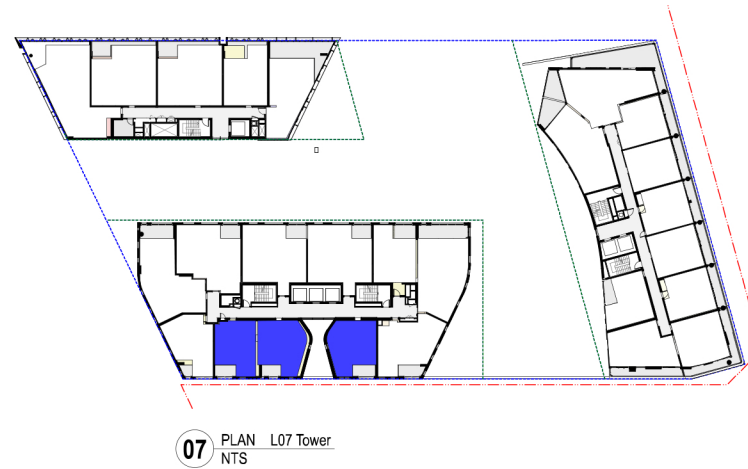
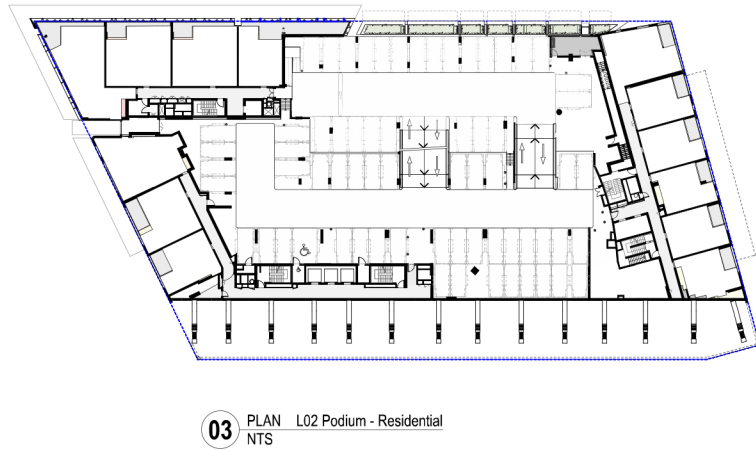
NO APARTMENTS ON L00 and L01



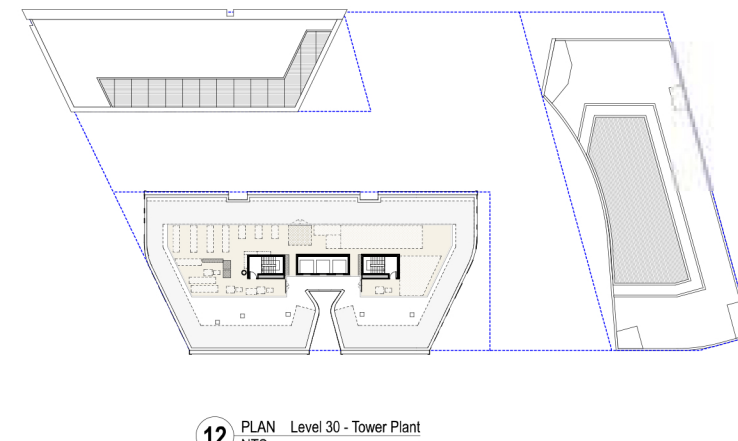
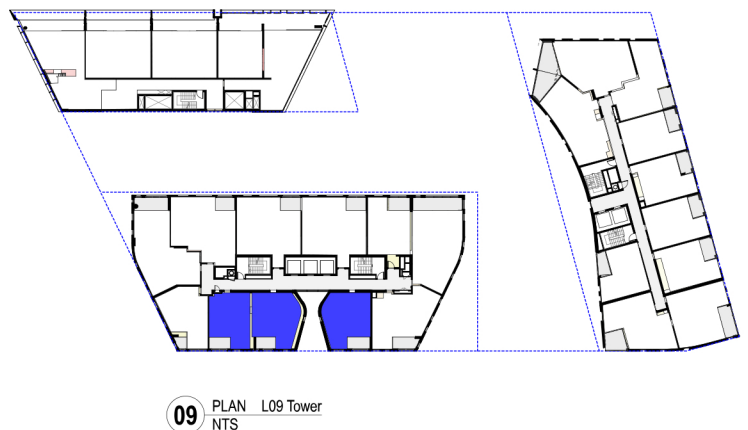
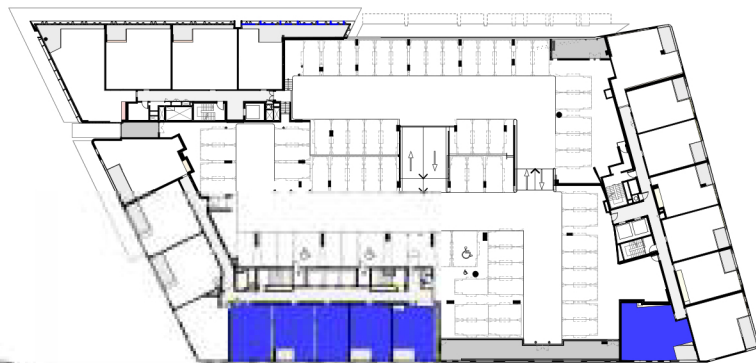
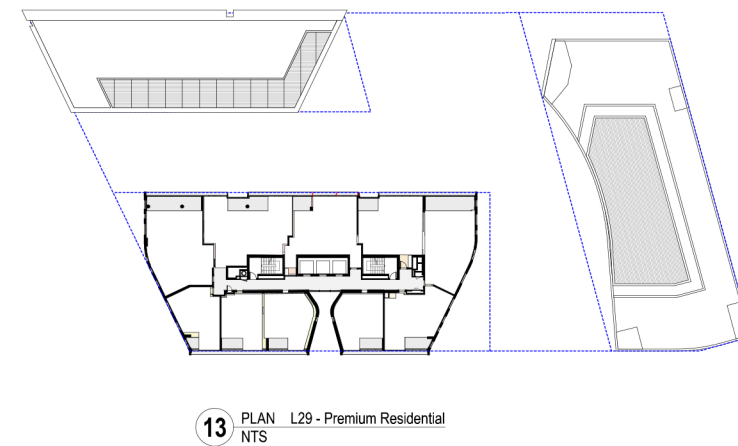
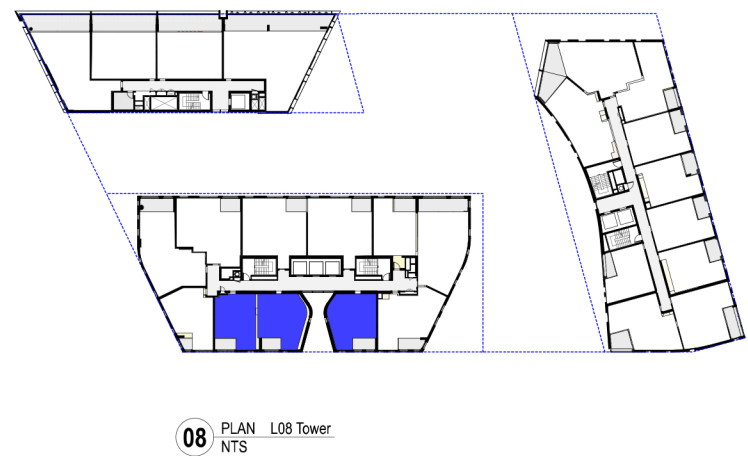
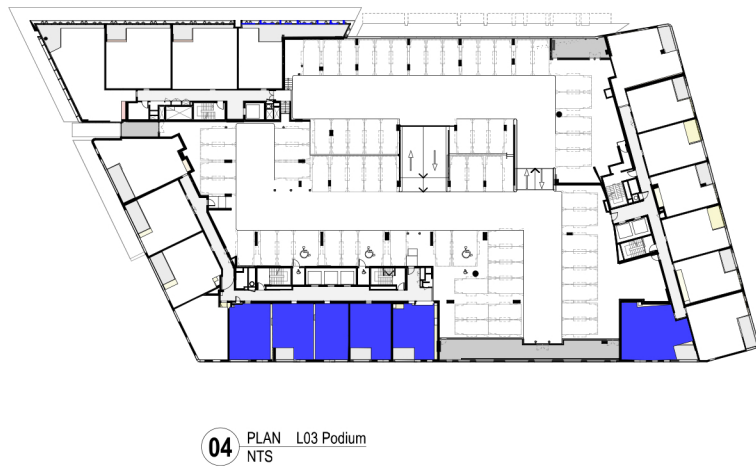
GENERAL NOTES
 ALL DIMENSIONS AND EXISTING CONDITIONS SHALL BE CHECKED AND VERIFIED BY THE CONTRACTOR BEFORE PROCEEDING WITH THE WORK.
 ALL LEVELS RELATIVE TO AUSTRALIAN HEIGHT DATUM.
 DO NOT SCALE DRAWINGS. USE FIGURED DIMENSIONS ON.

LEGEND

- S STUDIO
 - 1B 1 BED
 - 2B1B 2 BED + 1 BATH
 - 2B2B 2 BED + 2 BATH
 - 3B 3 BED
 - 4B 4 BED
 - COMMUNITY
 - RETAIL + NON-RESIDENTIAL
 - EXTERNAL AREA
 - COURTYARD/BALCONY/WINTER GARDEN
- ADAPTABLE APARTMENT
- CROSS VENT (CFD MODELLING)
- CROSS VENT PATH
- SOUTH FACING APARTMENTS
- 2 HOUR SOLAR ACCESS APARTMENTS
- NO SOLAR ACCESS APARTMENTS



| Level | No Solar | % |
|--------------|------------|------------|
| L29 | 3 | |
| L28 | 3 | |
| L27 | 4 | |
| L26 | 4 | |
| L25 | 4 | |
| L24 | 4 | |
| L23 | 4 | |
| L22 | 4 | |
| L21 | 4 | |
| L20 | 4 | |
| L19 | 4 | |
| L18 | 4 | 23% |
| L17 | 4 | |
| L16 | 4 | |
| L15 | 4 | |
| L14 | 4 | |
| L13 | 4 | |
| L12 | 4 | |
| L11 | 4 | |
| L10 | 4 | |
| L09 | 4 | |
| L08 | 4 | |
| L07 | 4 | |
| L06 | 7 | |
| L05 | 10 | 11% |
| L04 | 10 | |
| L03 | 12 | |
| L02 | 3 | |
| L01 | 0 | |
| L00 | 0 | |
| Total | 132 | 34% |



| Rev | Date | Description | By |
|-----|---------|-------------|------------|
| 01 | 22/1/16 | SSDA | Simon Barr |
| 02 | 27/1/16 | SSDA Update | Simon Barr |
| 03 | 3/2/16 | SSDA Update | Simon Barr |
| 04 | | | Simon Barr |
| 05 | | | Simon Barr |
| 06 | | | Simon Barr |
| 07 | | | Simon Barr |
| 08 | | | Simon Barr |
| 09 | | | Simon Barr |
| 10 | | | Simon Barr |
| 11 | | | Simon Barr |
| 12 | | | Simon Barr |
| 13 | | | Simon Barr |
| 14 | | | Simon Barr |
| 15 | | | Simon Barr |
| 16 | | | Simon Barr |
| 17 | | | Simon Barr |
| 18 | | | Simon Barr |
| 19 | | | Simon Barr |
| 20 | | | Simon Barr |
| 21 | | | Simon Barr |
| 22 | | | Simon Barr |
| 23 | | | Simon Barr |
| 24 | | | Simon Barr |
| 25 | | | Simon Barr |
| 26 | | | Simon Barr |
| 27 | | | Simon Barr |
| 28 | | | Simon Barr |
| 29 | | | Simon Barr |
| 30 | | | Simon Barr |
| 31 | | | Simon Barr |
| 32 | | | Simon Barr |
| 33 | | | Simon Barr |
| 34 | | | Simon Barr |
| 35 | | | Simon Barr |
| 36 | | | Simon Barr |
| 37 | | | Simon Barr |
| 38 | | | Simon Barr |
| 39 | | | Simon Barr |
| 40 | | | Simon Barr |
| 41 | | | Simon Barr |
| 42 | | | Simon Barr |
| 43 | | | Simon Barr |
| 44 | | | Simon Barr |
| 45 | | | Simon Barr |
| 46 | | | Simon Barr |
| 47 | | | Simon Barr |
| 48 | | | Simon Barr |
| 49 | | | Simon Barr |
| 50 | | | Simon Barr |

Lend Lease

fjmt
 NOMINATED ARCHITECT FRANCIS-JONES MOREHEN THORP

PROJECT: **Haymarket Square SE Plot**
 Sydney Lend Lease (Haymarket) Pty Limited, ABN 50 147 913 291

TITLE: **Environmental Performance Apartments With No Solar Access**

| | | | |
|-----------|----------------------|--------------|----------|
| SCALE | Not to Scale | PROJECT CODE | LLHM VSB |
| DATE | 22/1/16 | REVISION | 08 |
| SHEET NO. | FJMT-DA-R4004 | | |

For Approval