

**LEGEND**

S	STUDIO
1B	1 BED
2B1B	2 BED + 1 BATH
2B2B	2 BED + 2 BATH
3B	3 BED
4B	4 BED

COMMUNITY
RETAIL + NON-RESIDENTIAL
EXTERNAL AREA
COURTYARD/BALCONY/WINTER-GARDEN

ADAPTABLE APARTMENT
CROSS VENT (CFD MODELLING)
CROSS VENT PATH
SOUTH FACING APARTMENTS
2 HOUR SOLAR ACCESS APARTMENTS
NO SOLAR ACCESS APARTMENTS

STORAGE CAGES
---------------

G01	Performance Glazed Window Wall
G02	Performance Glazed Aluminium Framed Sliding doors
G03	Performance Glazed Operable windows
G04	Performance Glazed Operable Window
G05	Performance Glazed Aluminium Framed Sliding doors
G06	Face Glazed Retail Glazing
G06B	Face Glazed Retail Glazing
G06C	Colour Backed Glazing
G06D	Face Glazed Retail Glazing

BAL01	Glazed Balustrade
BAL02	Glazed Balustrade
BAL03	Glazed Balustrade
BAL04	Batten Balustrade
BAL05	Batten Balustrade

AW01	Awning Type 01 (Retractable)
AW02	Awning Type 02 (Glazed with Timber Battens)
AW03	Awning Type 03 (Composite Metal Cladding)
AW04	Awning Type 04 (Composite Metal Cladding)

SC01	Operable perforated metal sunshade screens, 50% open
SC02	Fixed Perforated metal screen
SC03	Brise Soleil
SC04A	Timber (or similar) Batten Screens

SC04B	Timber (or similar) Cladding
SC05	Vertical Perforated fixed metal screen

LV01	Anodised aluminium louvred screen
LV03	Horizontal Fixed louvers
LV04	Powder coated aluminium louvred screen

CONP01	Precast concrete panels with expressed jointing
CONP02A	Precast concrete panels with expressed jointing
CONP02B	Precast concrete panels with expressed jointing
CONP02C	Precast concrete panels with expressed jointing
CONP02D	Precast concrete panels with expressed jointing
CONP03	Precast concrete panels with expressed jointing

CON01	Off-Form Concrete
CON02	Concrete Paint Finish
CON03	Concrete Paint Finish

CON04	Concrete Soffits generally
CON05	Concrete Soffits above Balconies in Facade Slots

CL01	Terracotta (or similar) Cladding
CL02	Metal Panel
CL03	Chinese Black Granite

Revision	Issue Date	Description	Issued By
02	13/2/16	SSDA Final Draft	Simon Barr
03	25/2/16	SSDA Final	Simon Barr
04	9/3/16	SSDA Update	Simon Barr
05	24/3/16	DD Update	Jason Chung
06	18/5/16	Revised SSDA Plans	Natalie Fan
07	10/6/16	SSDA Update	Jason Chung
08	7/11/16	SSDA Update	Jason Chung
09	17/11/16	Revised SSDA Issue	Jason Chung
10	21/4/17	Section 96 Submission	Carleen Chan

CLIENT <SYDNEY>  
 Level 5, 425-431 Sussex Street,  
 Sydney, NSW 2000, Australia  
 T +61 2 9236 6111  
 www.lendlease.com



ARCHITECT **fjmt** SYDNEY  
 Level 5, 70 King Street  
 Sydney NSW 2000 Australia  
 T +61 2 9251 7077  
 F +61 2 9251 7072  
 E fjmt@fjmt.com.au  
 W www.fjmt.com.au

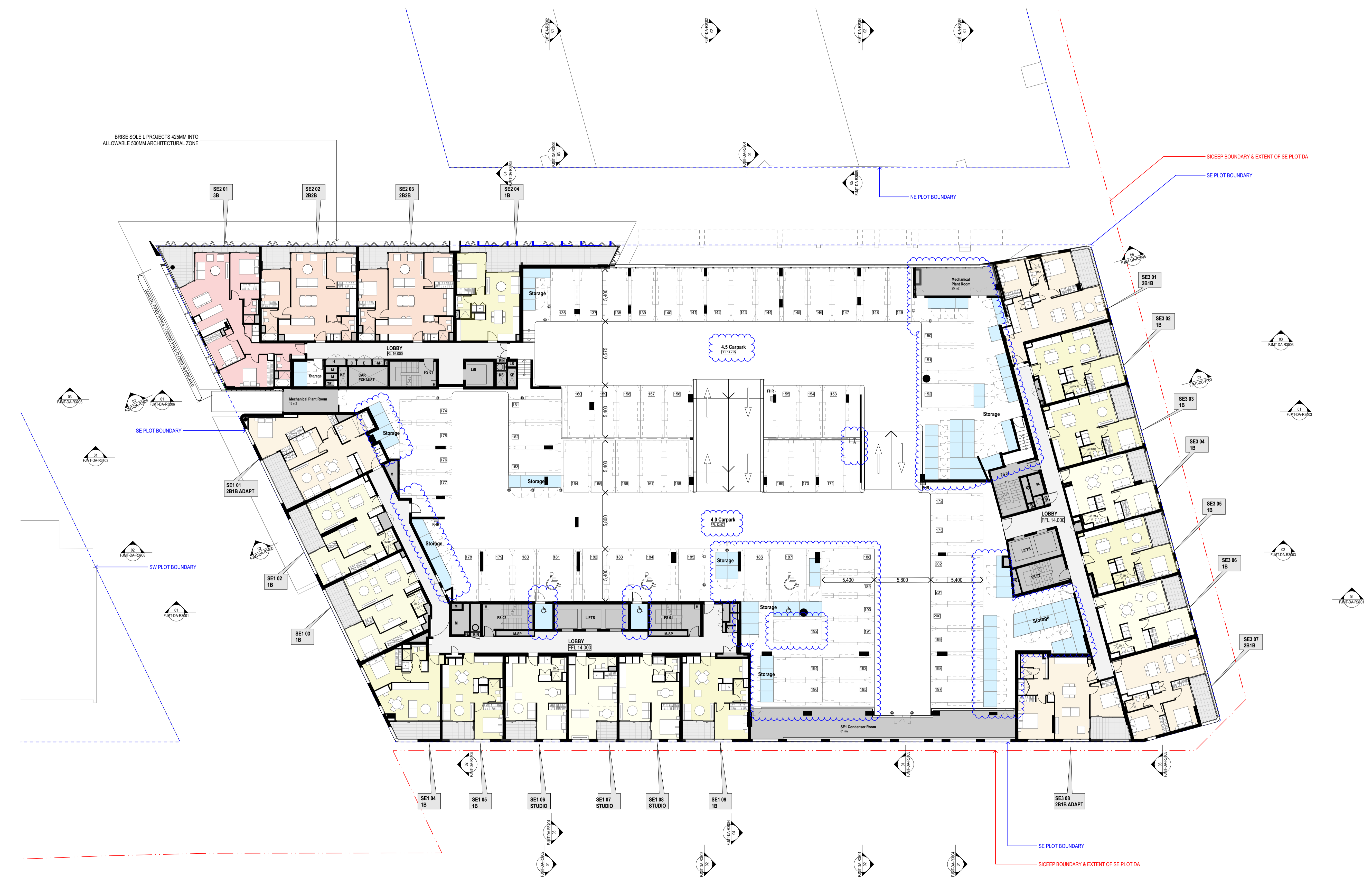
PROJECT (SICEEP) Darling Square SE Plot  
 Sydney  
 Lend Lease (Haymarket) Pty Limited, ABN 50 147 913 291

TITLE  
**Plans**  
**L04 Podium - Residential**

WHEN PRINTED AT 50% @ A3 DRAWING SCALE IS 1:400  
 SCALE 1:200 @ A1 PROJECT CODE  
 DATE 5/2/16 LLHM V5B

SHEET NO. REVISION  
**FJMT-DA-R1006** **10**

**For Approval**



BRISE SOLEIL PROJECTS 425MM INTO ALLOWABLE 500MM ARCHITECTURAL ZONE

SICEEP BOUNDARY & EXTENT OF SE PLOT DA

NE PLOT BOUNDARY

SE PLOT BOUNDARY

SW PLOT BOUNDARY

SE PLOT BOUNDARY

SICEEP BOUNDARY & EXTENT OF SE PLOT DA

**LEGEND**

S	STUDIO
1B	1 BED
2B1B	2 BED + 1 BATH
2B2B	2 BED + 2 BATH
3B	3 BED
4B	4 BED

COMMUNITY
RETAIL + NON-RESIDENTIAL
EXTERNAL AREA
COURTYARD/BALCONY/WINTER-GARDEN

ADAPTABLE APARTMENT
CROSS VENT (CFD MODELLING)
CROSS VENT PATH
SOUTH FACING APARTMENTS
2 HOUR SOLAR ACCESS APARTMENTS
NO SOLAR ACCESS APARTMENTS

STORAGE CAGES
G01 Performance Glazed Window Wall
G02 Performance Glazed Aluminium Framed Sliding doors
G03 Performance Glazed Operable windows
G04 Performance Glazed Operable Window
G05 Performance Glazed Aluminium Framed Sliding doors
G06 Face Glazed Retail Glazing
G06B Face Glazed Retail Glazing
G06C Colour Backed Glazing
G06D Face Glazed Retail Glazing

BAL01 Glazed Balustrade
BAL02 Glazed Balustrade
BAL03 Glazed Balustrade
BAL04 Batten Balustrade
BAL05 Batten Balustrade

AW01 Awning Type 01 (Retractable)
AW02 Awning Type 02 (Glazed with Timber Battens)
AW03 Awning Type 03 (Composite Metal Cladding)
AW04 Awning Type 04 (Composite Metal Cladding)

SC01 Operable perforated metal sunshade screens, 50% open
SC02 Fixed Perforated metal screen
SC03 Brise Soleil
SC04A Timber (or similar) Batten Screens
SC04B Timber (or similar) Cladding
SC05 Vertical Perforated fixed metal screen

LV01 Anodised aluminium louvred screen
LV03 Horizontal Fixed louvers
LV04 Powder coated aluminium louvred screen

CONP01 Precast concrete panels with expressed jointing
CONP02A Precast concrete panels with expressed jointing
CONP02B Precast concrete panels with expressed jointing
CONP02C Precast concrete panels with expressed jointing
CONP02D Precast concrete panels with expressed jointing
CONP03 Precast concrete panels with expressed jointing

CON01 Off-Form Concrete
CON02 Concrete Paint Finish
CON03 Concrete Paint Finish
CON04 Concrete Soffits generally
CON05 Concrete Soffits above Balconies in Facade Slots

CL01 Terracotta (or similar) Cladding
CL02 Metal Panel
CL03 Chinese Black Granite

02 13/2/16 SSSA Final Draft Simon Barr
03 25/2/16 SSSA Final Simon Barr
04 9/3/16 SSSA Update Simon Barr
05 24/3/16 DD Update Jason Chung
06 18/5/16 Revised SSSA Plans Natalie Fan
07 10/6/16 SSSA Update Jason Chung
08 7/11/16 SSSA Update Jason Chung
09 17/11/16 Revised SSSA Issue Jason Chung
10 21/4/17 Section 96 Submission Carmen Chan

Revision	Issue Date	Description	Issued By
02	13/2/16	SSSA Final Draft	Simon Barr
03	25/2/16	SSSA Final	Simon Barr
04	9/3/16	SSSA Update	Simon Barr
05	24/3/16	DD Update	Jason Chung
06	18/5/16	Revised SSSA Plans	Natalie Fan
07	10/6/16	SSSA Update	Jason Chung
08	7/11/16	SSSA Update	Jason Chung
09	17/11/16	Revised SSSA Issue	Jason Chung
10	21/4/17	Section 96 Submission	Carmen Chan

CLIENT <SYDNEY>  
 Level 5, 425-431 Sussex Street,  
 Sydney, NSW 2000, Australia  
 T +61 2 9236 6111  
 www.lendlease.com

**Lend Lease**

ARCHITECT **fjmt** SYDNEY  
 Level 5, 70 King Street  
 Sydney NSW 2000 Australia  
 T +61 2 9251 7077  
 F +61 2 9251 7072  
 E fjmt@fjmt.com.au  
 W www.fjmt.com.au

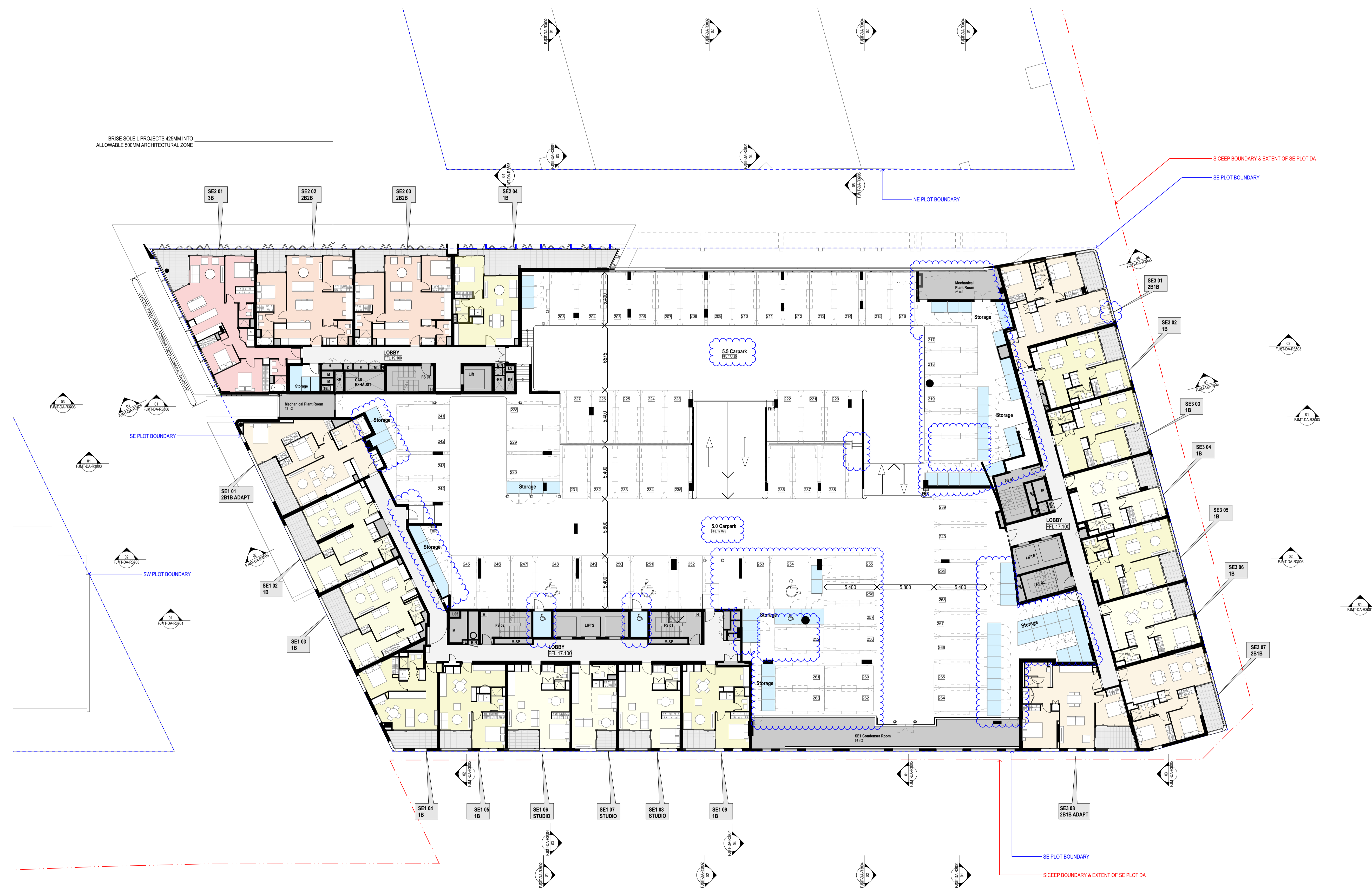
PROJECT (SICEEP) Darling Square SE Plot  
 Sydney  
 Lend Lease (Haymarket) Pty Limited, ABN 50 147 913 291

TITLE  
**Plans**  
**L05 Podium - Residential**

WHEN PRINTED AT 50% @ A3 DRAWING SCALE IS 1:400  
 SCALE 1:200 @ A1 PROJECT CODE  
 DATE 5/2/16 **LLHM V5B**

SHEET NO. **FJMT-DA-R1007** REVISION  
**10**

**For Approval**



BRISE SOLEIL PROJECTS 425MM INTO ALLOWABLE 500MM ARCHITECTURAL ZONE

SICEEP BOUNDARY & EXTENT OF SE PLOT DA

NE PLOT BOUNDARY

SE PLOT BOUNDARY

SW PLOT BOUNDARY

SICEEP BOUNDARY & EXTENT OF SE PLOT DA

**GENERAL NOTES**  
 ALL DIMENSIONS AND EXISTING CONDITIONS SHALL BE CHECKED AND VERIFIED BY THE CONTRACTOR BEFORE PROCEEDING WITH THE WORK  
 ALL LEVELS RELATIVE TO AUSTRALIAN HEIGHT DATUM  
 DO NOT SCALE DRAWINGS. USE FIGURED DIMENSIONS ONLY

**LEGEND**

S	STUDIO
1B	1 BED
2B1B	2 BED + 1 BATH
2B2B	2 BED + 2 BATH
3B	3 BED
4B	4 BED
COMMUNITY	
RETAIL + NON-RESIDENTIAL	
EXTERNAL AREA	
COURTYARD/BALCONY/WINTER GARDEN	

ADAPTABLE APARTMENT
CROSS VENT (CFD MODELLING)
CROSS VENT PATH
SOUTH FACING APARTMENTS
2 HOUR SOLAR ACCESS APARTMENTS
NO SOLAR ACCESS APARTMENTS

STORAGE CAGES

G01	Performance Glazed Window Wall
G02	Performance Glazed Aluminium Framed Sliding doors
G03	Performance Glazed Operable windows
G04	Performance Glazed Operable Window
G05	Performance Glazed Aluminium Framed Sliding doors
G06	Face Glazed Retail Glazing
G06B	Face Glazed Retail Glazing
G06C	Colour Backed Glazing
G06D	Face Glazed Retail Glazing
BAL01	Glazed Balustrade
BAL02	Glazed Balustrade
BAL03	Glazed Balustrade
BAL04	Batten Balustrade
BAL05	Batten Balustrade
AW01	Awning Type 01 (Retractable)
AW02	Awning Type 02 (Glazed with Timber Battens)
AW03	Awning Type 03 (Composite Metal Cladding)
AW04	Awning Type 04 (Composite Metal Cladding)
SC01	Operable perforated metal sunshade screens, 50% open
SC02	Fixed Perforated metal screen
SC03	Brise Soleil
SC04A	Timber (or similar) Batten Screens
SC04B	Timber (or similar) Cladding
SC05	Vertical Perforated fixed metal screen
LV01	Anodised aluminium louvred screen
LV03	Horizontal Fixed louvres
LV04	Powder coated aluminium louvred screen
CONP01	Precast concrete panels with expressed jointing
CONP02A	Precast concrete panels with expressed jointing
CONP02B	Precast concrete panels with expressed jointing
CONP02C	Precast concrete panels with expressed jointing
CONP02D	Precast concrete panels with expressed jointing
CONP03	Precast concrete panels with expressed jointing
CONC01	Off-Form Concrete
CONC02	Concrete Paint Finish
CONC03	Concrete Paint Finish
CONC04	Concrete Soffits generally
CONC05	Concrete Soffits above Balconies in Facade Slots
CL01	Terracotta (or similar) Cladding
CL02	Metal Panel
CL03	Chinese Black Granite

Revision	Issue Date	Description	Issued By
05	13/2/16	SSDA Final Draft	Simon Barr
06	25/2/16	SSDA Final	Simon Barr
07	9/3/16	SSDA Update	Simon Barr
08	24/3/16	DD Update	Jason Chung
09	18/5/16	Revised SSDA Plans	Natalie Fan
10	10/6/16	SSDA Update	Jason Chung
11	17/11/16	SSDA Update	Jason Chung
12	17/11/16	Revised SSDA Issue	Jason Chung
13	21/4/17	Section 96 Submission	Carmen Chan

CLIENT: <SYDNEY>  
 Level 5, 402-411 Sussex Street, Sydney, NSW 2000, Australia  
 T +61 2 9236 6111  
 www.lendlease.com



ARCHITECT: **fjmt**  
 Level 5, 70 King Street, Sydney NSW 2000, Australia  
 T +61 2 9251 7077  
 F +61 2 9251 7072  
 E fjmt@fjmt.com.au  
 W www.fjmt.com.au

PROJECT: (SICEEP) Darling Square SE Plot

Sydney  
 Lend Lease (Haymarket) Pty Limited, ABN 50 147 913 291

TITLE: **Plans**  
**L06 SE1 Setback, SE2 ComSp1 SE3 & Rf Gdns**

WHEN PRINTED AT 50% @ A3 DRAWING SCALE IS 1:400	
SCALE: 1:200 @ A1	PROJECT CODE: LLHM V5B
DATE: 22/1/16	REVISION: 13
SHEET NO. <b>FJMT-DA-R1008</b>	

**For Approval**



**GENERAL NOTES**  
 ALL DIMENSIONS AND EXISTING CONDITIONS SHALL BE CHECKED AND VERIFIED BY THE CONTRACTOR BEFORE PROCEEDING WITH THE WORK  
 ALL LEVELS RELATIVE TO AUSTRALIAN HEIGHT DATUM  
 DO NOT SCALE DRAWINGS. USE FIGURED DIMENSIONS ONLY

**LEGEND**

S	STUDIO
1B	1 BED
2B1B	2 BED + 1 BATH
2B2B	2 BED + 2 BATH
3B	3 BED
4B	4 BED
COMMUNITY	
RETAIL + NON-RESIDENTIAL	
EXTERNAL AREA	
COURTYARD/BALCONY/WINTER-GARDEN	

ADAPTABLE APARTMENT
CROSS VENT (CFD MODELLING)
CROSS VENT PATH
SOUTH FACING APARTMENTS
2 HOUR SOLAR ACCESS APARTMENTS
NO SOLAR ACCESS APARTMENTS

STORAGE CAGES
---------------

G01	Performance Glazed Window Wall
G02	Performance Glazed Aluminium Framed Sliding doors
G03	Performance Glazed Operable windows
G04	Performance Glazed Operable Window
G05	Performance Glazed Aluminium Framed Sliding doors
G06	Face Glazed Retail Glazing
G06B	Face Glazed Retail Glazing
G06C	Colour Backed Glazing
G06D	Face Glazed Retail Glazing
BAL01	Glazed Balustrade
BAL02	Glazed Balustrade
BAL03	Glazed Balustrade
BAL04	Batten Balustrade
BAL05	Batten Balustrade
AW01	Awning Type 01 (Retractable)
AW02	Awning Type 02 (Glazed with Timber Battens)
AW03	Awning Type 03 (Composite Metal Cladding)
AW04	Awning Type 04 (Composite Metal Cladding)
SC01	Operable perforated metal sunshade screens, 50% open
SC02	Fixed Perforated metal screen
SC03	BriSe Soleil
SC04A	Timber (or similar) Batten Screens
SC04B	Timber (or similar) Cladding
SC05	Vertical Perforated fixed metal screen
LV01	Anodised aluminium louvred screen
LV03	Horizontal Fixed louvres
LV04	Powder coated aluminium louvred screen
CONP01	Precast concrete panels with expressed jointing
CONP02A	Precast concrete panels with expressed jointing
CONP02B	Precast concrete panels with expressed jointing
CONP02C	Precast concrete panels with expressed jointing
CONP02D	Precast concrete panels with expressed jointing
CONP03	Precast concrete panels with expressed jointing
CON01	Off-Form Concrete
CON02	Concrete Paint Finish
CON03	Concrete Paint Finish
CON04	Concrete Soffits generally
CON05	Concrete Soffits above Balconies in Facade Slots
CL01	Terracotta (or similar) Cladding
CL02	Metal Panel
CL03	Chinese Black Granite

Revision	Issue Date	Description	Issued By
06	25/2/16	SSDA Final	Simon Barr
07	9/3/16	SSDA Update	Simon Barr
08	22/3/16	DD Update	Jason Chung
09	24/3/16	DD Update	Jason Chung
10	7/4/16	DD Update	Jason Chung
11	20/4/16	DD Update	Natalie Fan
12	18/5/16	Revised SSDA Plans	Natalie Fan
13	18/5/16	SSDA Update	Jason Chung
14	21/4/17	Section 96 Submission	Carmen Chan

CLIENT: <SYDNEY>  
 Level 5, 425-431 Sussex Street, Sydney NSW 2000, Australia  
 T +61 2 9226 6111 www.lendlease.com



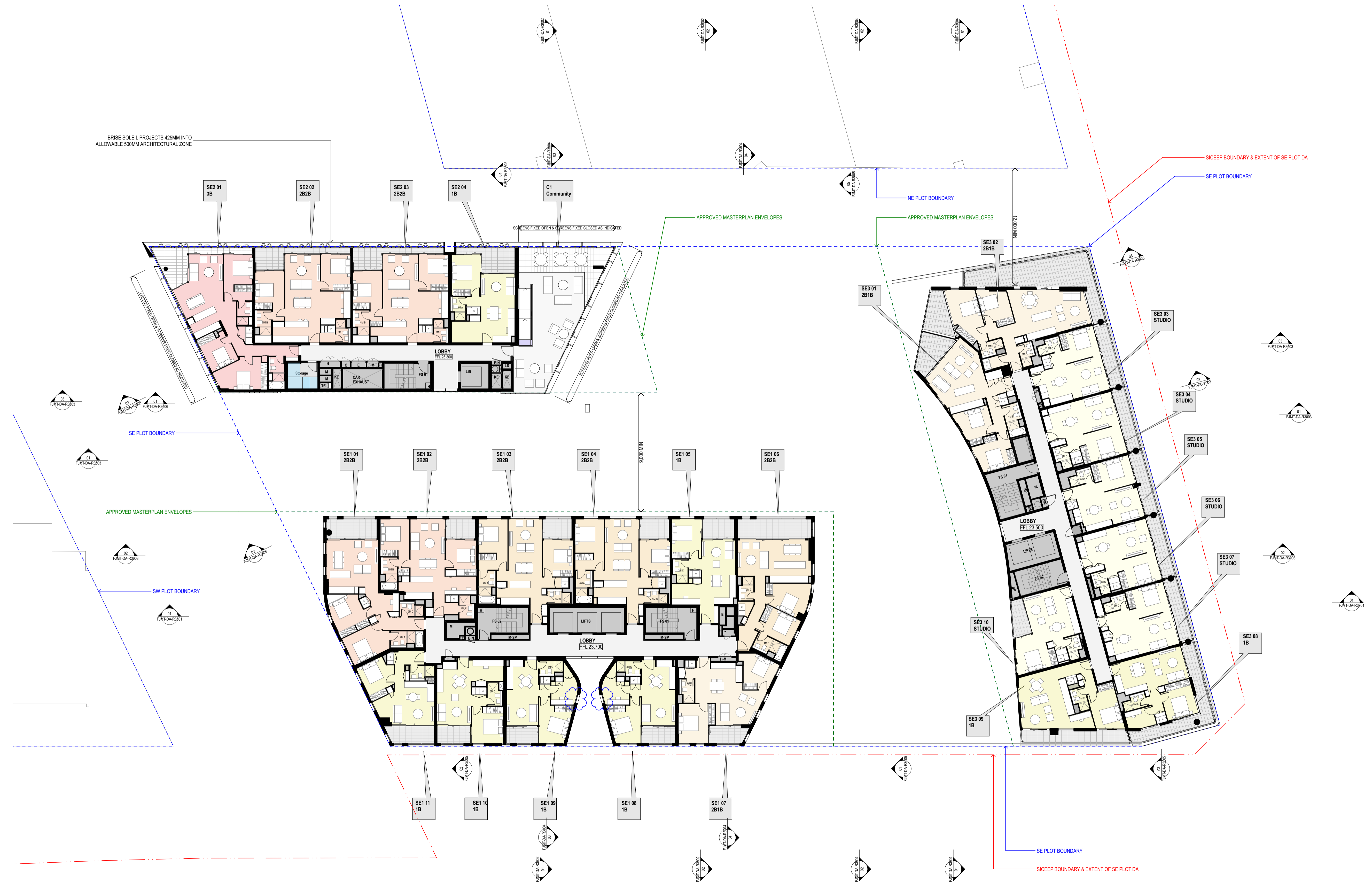
ARCHITECT: **fjmt** FRANCIS-JONES MOREHEN THORP  
 SYDNEY: Level 5, 70 King Street, Sydney NSW 2000, Australia  
 T +61 2 9251 7077 F +61 2 9251 7072 E fjmt@fjmt.com.au W www.fjmt.com.au

PROJECT: (SICEEP) Darling Square SE Plot  
 Sydney  
 Lend Lease (Haymarket) Pty Limited, ABN 50 147 913 291

TITLE: Plans  
 L07 SE1 Low Rise, SE2 ComSp2 & SE3 Setback  
 WHEN PRINTED AT 50% @ A3 DRAWING SCALE IS 1:400

SCALE	1:200 @ A1	PROJECT CODE	LLHM V5B
DATE	22/1/16	REVISION	14
SHEET NO.	FJMT-DA-R1009		

For Approval



BRISE SOLEIL PROJECTS 425MM INTO ALLOWABLE 500MM ARCHITECTURAL ZONE

SCREENS FIXED OPEN & SCREENS FIXED CLOSED AS INDICATED

SCREENS FIXED OPEN & SCREENS FIXED CLOSED AS INDICATED

SCREENS FIXED OPEN & SCREENS FIXED CLOSED AS INDICATED

SCREENS FIXED OPEN & SCREENS FIXED CLOSED AS INDICATED

SCREENS FIXED OPEN & SCREENS FIXED CLOSED AS INDICATED

SCREENS FIXED OPEN & SCREENS FIXED CLOSED AS INDICATED

SCREENS FIXED OPEN & SCREENS FIXED CLOSED AS INDICATED

SCREENS FIXED OPEN & SCREENS FIXED CLOSED AS INDICATED

SCREENS FIXED OPEN & SCREENS FIXED CLOSED AS INDICATED

SCREENS FIXED OPEN & SCREENS FIXED CLOSED AS INDICATED

SCREENS FIXED OPEN & SCREENS FIXED CLOSED AS INDICATED

SCREENS FIXED OPEN & SCREENS FIXED CLOSED AS INDICATED

SCREENS FIXED OPEN & SCREENS FIXED CLOSED AS INDICATED

SCREENS FIXED OPEN & SCREENS FIXED CLOSED AS INDICATED

SCREENS FIXED OPEN & SCREENS FIXED CLOSED AS INDICATED

SCREENS FIXED OPEN & SCREENS FIXED CLOSED AS INDICATED

SCREENS FIXED OPEN & SCREENS FIXED CLOSED AS INDICATED

SCREENS FIXED OPEN & SCREENS FIXED CLOSED AS INDICATED

SCREENS FIXED OPEN & SCREENS FIXED CLOSED AS INDICATED

SCREENS FIXED OPEN & SCREENS FIXED CLOSED AS INDICATED

SCREENS FIXED OPEN & SCREENS FIXED CLOSED AS INDICATED

SCREENS FIXED OPEN & SCREENS FIXED CLOSED AS INDICATED

SCREENS FIXED OPEN & SCREENS FIXED CLOSED AS INDICATED

SCREENS FIXED OPEN & SCREENS FIXED CLOSED AS INDICATED

SCREENS FIXED OPEN & SCREENS FIXED CLOSED AS INDICATED

SCREENS FIXED OPEN & SCREENS FIXED CLOSED AS INDICATED

SCREENS FIXED OPEN & SCREENS FIXED CLOSED AS INDICATED

SCREENS FIXED OPEN & SCREENS FIXED CLOSED AS INDICATED

SCREENS FIXED OPEN & SCREENS FIXED CLOSED AS INDICATED

SCREENS FIXED OPEN & SCREENS FIXED CLOSED AS INDICATED

SCREENS FIXED OPEN & SCREENS FIXED CLOSED AS INDICATED

SCREENS FIXED OPEN & SCREENS FIXED CLOSED AS INDICATED

SCREENS FIXED OPEN & SCREENS FIXED CLOSED AS INDICATED

SCREENS FIXED OPEN & SCREENS FIXED CLOSED AS INDICATED

SCREENS FIXED OPEN & SCREENS FIXED CLOSED AS INDICATED

SCREENS FIXED OPEN & SCREENS FIXED CLOSED AS INDICATED

SCREENS FIXED OPEN & SCREENS FIXED CLOSED AS INDICATED

SCREENS FIXED OPEN & SCREENS FIXED CLOSED AS INDICATED

SCREENS FIXED OPEN & SCREENS FIXED CLOSED AS INDICATED

SCREENS FIXED OPEN & SCREENS FIXED CLOSED AS INDICATED

SCREENS FIXED OPEN & SCREENS FIXED CLOSED AS INDICATED

SCREENS FIXED OPEN & SCREENS FIXED CLOSED AS INDICATED

SCREENS FIXED OPEN & SCREENS FIXED CLOSED AS INDICATED

SCREENS FIXED OPEN & SCREENS FIXED CLOSED AS INDICATED

SCREENS FIXED OPEN & SCREENS FIXED CLOSED AS INDICATED

SCREENS FIXED OPEN & SCREENS FIXED CLOSED AS INDICATED

SCREENS FIXED OPEN & SCREENS FIXED CLOSED AS INDICATED

SCREENS FIXED OPEN & SCREENS FIXED CLOSED AS INDICATED

SCREENS FIXED OPEN & SCREENS FIXED CLOSED AS INDICATED

SCREENS FIXED OPEN & SCREENS FIXED CLOSED AS INDICATED

SCREENS FIXED OPEN & SCREENS FIXED CLOSED AS INDICATED

SCREENS FIXED OPEN & SCREENS FIXED CLOSED AS INDICATED

SCREENS FIXED OPEN & SCREENS FIXED CLOSED AS INDICATED

SCREENS FIXED OPEN & SCREENS FIXED CLOSED AS INDICATED

SCREENS FIXED OPEN & SCREENS FIXED CLOSED AS INDICATED

SCREENS FIXED OPEN & SCREENS FIXED CLOSED AS INDICATED

SCREENS FIXED OPEN & SCREENS FIXED CLOSED AS INDICATED

SCREENS FIXED OPEN & SCREENS FIXED CLOSED AS INDICATED

SCREENS FIXED OPEN & SCREENS FIXED CLOSED AS INDICATED

SCREENS FIXED OPEN & SCREENS FIXED CLOSED AS INDICATED

SCREENS FIXED OPEN & SCREENS FIXED CLOSED AS INDICATED

SCREENS FIXED OPEN & SCREENS FIXED CLOSED AS INDICATED

SCREENS FIXED OPEN & SCREENS FIXED CLOSED AS INDICATED

SCREENS FIXED OPEN & SCREENS FIXED CLOSED AS INDICATED

SCREENS FIXED OPEN & SCREENS FIXED CLOSED AS INDICATED

SCREENS FIXED OPEN & SCREENS FIXED CLOSED AS INDICATED

SCREENS FIXED OPEN & SCREENS FIXED CLOSED AS INDICATED

SCREENS FIXED OPEN & SCREENS FIXED CLOSED AS INDICATED

SCREENS FIXED OPEN & SCREENS FIXED CLOSED AS INDICATED

SCREENS FIXED OPEN & SCREENS FIXED CLOSED AS INDICATED

SCREENS FIXED OPEN & SCREENS FIXED CLOSED AS INDICATED

SCREENS FIXED OPEN & SCREENS FIXED CLOSED AS INDICATED

SCREENS FIXED OPEN & SCREENS FIXED CLOSED AS INDICATED

SCREENS FIXED OPEN & SCREENS FIXED CLOSED AS INDICATED

SCREENS FIXED OPEN & SCREENS FIXED CLOSED AS INDICATED

SCREENS FIXED OPEN & SCREENS FIXED CLOSED AS INDICATED

SCREENS FIXED OPEN & SCREENS FIXED CLOSED AS INDICATED

SCREENS FIXED OPEN & SCREENS FIXED CLOSED AS INDICATED

SCREENS FIXED OPEN & SCREENS FIXED CLOSED AS INDICATED

SCREENS FIXED OPEN & SCREENS FIXED CLOSED AS INDICATED

SCREENS FIXED OPEN & SCREENS FIXED CLOSED AS INDICATED

SCREENS FIXED OPEN & SCREENS FIXED CLOSED AS INDICATED

SCREENS FIXED OPEN & SCREENS FIXED CLOSED AS INDICATED

SCREENS FIXED OPEN & SCREENS FIXED CLOSED AS INDICATED

SCREENS FIXED OPEN & SCREENS FIXED CLOSED AS INDICATED

SCREENS FIXED OPEN & SCREENS FIXED CLOSED AS INDICATED

SCREENS FIXED OPEN & SCREENS FIXED CLOSED AS INDICATED

SCREENS FIXED OPEN & SCREENS FIXED CLOSED AS INDICATED

SCREENS FIXED OPEN & SCREENS FIXED CLOSED AS INDICATED

SCREENS FIXED OPEN & SCREENS FIXED CLOSED AS INDICATED

SCREENS FIXED OPEN & SCREENS FIXED CLOSED AS INDICATED

SCREENS FIXED OPEN & SCREENS FIXED CLOSED AS INDICATED

SCREENS FIXED OPEN & SCREENS FIXED CLOSED AS INDICATED

SCREENS FIXED OPEN & SCREENS FIXED CLOSED AS INDICATED

SCREENS FIXED OPEN & SCREENS FIXED CLOSED AS INDICATED

SCREENS FIXED OPEN & SCREENS FIXED CLOSED AS INDICATED

SCREENS FIXED OPEN & SCREENS FIXED CLOSED AS INDICATED

SCREENS FIXED OPEN & SCREENS FIXED CLOSED AS INDICATED

SCREENS FIXED OPEN & SCREENS FIXED CLOSED AS INDICATED

SCREENS FIXED OPEN & SCREENS FIXED CLOSED AS INDICATED

SCREENS FIXED OPEN & SCREENS FIXED CLOSED AS INDICATED

SCREENS FIXED OPEN & SCREENS FIXED CLOSED AS INDICATED

SCREENS FIXED OPEN & SCREENS FIXED CLOSED AS INDICATED

SCREENS FIXED OPEN & SCREENS FIXED CLOSED AS INDICATED

SCREENS FIXED OPEN & SCREENS FIXED CLOSED AS INDICATED

SCREENS FIXED OPEN & SCREENS FIXED CLOSED AS INDICATED

SCREENS FIXED OPEN & SCREENS FIXED CLOSED AS INDICATED

SCREENS FIXED OPEN & SCREENS FIXED CLOSED AS INDICATED

SCREENS FIXED OPEN & SCREENS FIXED CLOSED AS INDICATED

SCREENS FIXED OPEN & SCREENS FIXED CLOSED AS INDICATED

SCREENS FIXED OPEN & SCREENS FIXED CLOSED AS INDICATED

SCREENS FIXED OPEN & SCREENS FIXED CLOSED AS INDICATED

SCREENS FIXED OPEN & SCREENS FIXED CLOSED AS INDICATED

SCREENS FIXED OPEN & SCREENS FIXED CLOSED AS INDICATED

SCREENS FIXED OPEN & SCREENS FIXED CLOSED AS INDICATED

SCREENS FIXED OPEN & SCREENS FIXED CLOSED AS INDICATED

SCREENS FIXED OPEN & SCREENS FIXED CLOSED AS INDICATED

SCREENS FIXED OPEN & SCREENS FIXED CLOSED AS INDICATED

SCREENS FIXED OPEN & SCREENS FIXED CLOSED AS INDICATED

SCREENS FIXED OPEN & SCREENS FIXED CLOSED AS INDICATED

SCREENS FIXED OPEN & SCREENS FIXED CLOSED AS INDICATED

SCREENS FIXED OPEN & SCREENS FIXED CLOSED AS INDICATED

SCREENS FIXED OPEN & SCREENS FIXED CLOSED AS INDICATED

SCREENS FIXED OPEN & SCREENS FIXED CLOSED AS INDICATED

SCREENS FIXED OPEN & SCREENS FIXED CLOSED AS INDICATED

SCREENS FIXED OPEN & SCREENS FIXED CLOSED AS INDICATED

SCREENS FIXED OPEN & SCREENS FIXED CLOSED AS INDICATED

SCREENS FIXED OPEN & SCREENS FIXED CLOSED AS INDICATED

SCREENS FIXED OPEN & SCREENS FIXED CLOSED AS INDICATED

SCREENS FIXED OPEN & SCREENS FIXED CLOSED AS INDICATED

SCREENS FIXED OPEN & SCREENS FIXED CLOSED AS INDICATED

SCREENS FIXED OPEN & SCREENS FIXED CLOSED AS INDICATED

SCREENS FIXED OPEN & SCREENS FIXED CLOSED AS INDICATED

SCREENS FIXED OPEN & SCREENS FIXED CLOSED AS INDICATED

SCREENS FIXED OPEN & SCREENS FIXED CLOSED AS INDICATED

SCREENS FIXED OPEN & SCREENS FIXED CLOSED AS INDICATED

SCREENS FIXED OPEN & SCREENS FIXED CLOSED AS INDICATED

SCREENS FIXED OPEN & SCREENS FIXED CLOSED AS INDICATED

SCREENS FIXED OPEN & SCREENS FIXED CLOSED AS INDICATED

SCREENS FIXED OPEN & SCREENS FIXED CLOSED AS INDICATED

SCREENS FIXED OPEN & SCREENS FIXED CLOSED AS INDICATED

SCREENS FIXED OPEN & SCREENS FIXED CLOSED AS INDICATED

SCREENS FIXED OPEN & SCREENS FIXED CLOSED AS INDICATED

SCREENS FIXED OPEN & SCREENS FIXED CLOSED AS INDICATED

SCREENS FIXED OPEN & SCREENS FIXED CLOSED AS INDICATED

SCREENS FIXED OPEN & SCREENS FIXED CLOSED AS INDICATED

SCREENS FIXED OPEN & SCREENS FIXED CLOSED AS INDICATED

SCREENS FIXED OPEN & SCREENS FIXED CLOSED AS INDICATED

SCREENS FIXED OPEN & SCREENS FIXED CLOSED AS INDICATED

SCREENS FIXED OPEN & SCREENS FIXED CLOSED AS INDICATED

SCREENS FIXED OPEN & SCREENS FIXED CLOSED AS INDICATED

SCREENS FIXED OPEN & SCREENS FIXED CLOSED AS INDICATED

SCREENS FIXED OPEN & SCREENS FIXED CLOSED AS INDICATED

SCREENS FIXED OPEN & SCREENS FIXED CLOSED AS INDICATED

SCREENS FIXED OPEN & SCREENS FIXED CLOSED AS INDICATED

SCREENS FIXED OPEN & SCREENS FIXED CLOSED AS INDICATED

SCREENS FIXED OPEN & SCREENS FIXED CLOSED AS INDICATED

SCREENS FIXED OPEN & SCREENS FIXED CLOSED AS INDICATED

SCREENS FIXED OPEN & SCREENS FIXED CLOSED AS INDICATED

SCREENS FIXED OPEN & SCREENS FIXED CLOSED AS INDICATED

SCREENS FIXED OPEN & SCREENS FIXED CLOSED AS INDICATED

SCREENS FIXED OPEN & SCREENS FIXED CLOSED AS INDICATED

SCREENS FIXED OPEN & SCREENS FIXED CLOSED AS INDICATED

SCREENS FIXED OPEN & SCREENS FIXED CLOSED AS INDICATED

SCREENS FIXED OPEN & SCREENS FIXED CLOSED AS INDICATED

SCREENS FIXED OPEN & SCREENS FIXED CLOSED AS INDICATED

SCREENS FIXED OPEN & SCREENS FIXED CLOSED AS INDICATED

SCREENS FIXED OPEN & SCREENS FIXED CLOSED AS INDICATED

SCREENS FIXED OPEN & SCREENS FIXED CLOSED AS INDICATED

SCREENS FIXED OPEN & SCREENS FIXED CLOSED AS INDICATED

SCREENS FIXED OPEN & SCREENS FIXED CLOSED AS INDICATED

SCREENS FIXED OPEN & SCREENS FIXED CLOSED AS INDICATED

SCREENS FIXED OPEN & SCREENS FIXED CLOSED AS INDICATED

SCREENS FIXED OPEN & SCREENS FIXED CLOSED AS INDICATED

SCREENS FIXED OPEN & SCREENS FIXED CLOSED AS INDICATED

SCREENS FIXED OPEN & SCREENS FIXED CLOSED AS INDICATED

SCREENS FIXED OPEN & SCREENS FIXED CLOSED AS INDICATED

SCREENS FIXED OPEN & SCREENS FIXED CLOSED AS INDICATED

SCREENS FIXED OPEN & SCREENS FIXED CLOSED AS INDICATED

SCREENS FIXED OPEN & SCREENS FIXED CLOSED AS INDICATED

SCREENS FIXED OPEN &amp

**GENERAL NOTES**

- ALL DIMENSIONS AND EXISTING CONDITIONS SHALL BE CHECKED AND VERIFIED BY THE CONTRACTOR BEFORE PROCEEDING WITH THE WORK
- ALL LEVELS RELATIVE TO AUSTRALIAN HEIGHT DATUM
- DO NOT SCALE DRAWINGS. USE FIGURED DIMENSIONS ONLY

**LEGEND**

S	STUDIO
1B	1 BED
2B1B	2 BED + 1 BATH
2B2B	2 BED + 2 BATH
3B	3 BED
4B	4 BED
COMMUNITY	
RETAIL + NON-RESIDENTIAL	
EXTERNAL AREA	
COURTYARD/BALCONY/WINTER-GARDEN	

ADAPTABLE APARTMENT
CROSS VENT (CFD MODELLING)
CROSS VENT PATH
SOUTH FACING APARTMENTS
2 HOUR SOLAR ACCESS APARTMENTS
NO SOLAR ACCESS APARTMENTS

STORAGE CAGES
---------------

G01	Performance Glazed Window Wall
G02	Performance Glazed Aluminium Framed Sliding doors
G03	Performance Glazed Operable windows
G04	Performance Glazed Operable Window
G05	Performance Glazed Aluminium Framed Sliding doors
G06	Face Glazed Retail Glazing
G06B	Face Glazed Retail Glazing
G06C	Colour Backed Glazing
G06D	Face Glazed Retail Glazing
BAL01	Glazed Balustrade
BAL02	Glazed Balustrade
BAL03	Glazed Balustrade
BAL04	Batten Balustrade
BAL05	Batten Balustrade
AW01	Awning Type 01 (Retractable)
AW02	Awning Type 02 (Glazed with Timber Battens)
AW03	Awning Type 03 (Composite Metal Cladding)
AW04	Awning Type 04 (Composite Metal Cladding)
SC01	Operable perforated metal sunshade screens, 50% open
SC02	Fixed Perforated metal screen
SC03	Brise Soleil
SC04A	Timber (or similar) Batten Screens
SC04B	Timber (or similar) Cladding
SC05	Vertical Perforated fixed metal screen
LV01	Anodised aluminium louvred screen
LV03	Horizontal Fixed louvres
LV04	Powder coated aluminium louvred screen
CONP01	Precast concrete panels with expressed jointing
CONP02A	Precast concrete panels with expressed jointing
CONP02B	Precast concrete panels with expressed jointing
CONP02C	Precast concrete panels with expressed jointing
CONP02D	Precast concrete panels with expressed jointing
CONP03	Precast concrete panels with expressed jointing
CON01	Off-Form Concrete
CON02	Concrete Paint Finish
CON03	Concrete Paint Finish
CON04	Concrete Soffits generally
CON05	Concrete Soffits above Balconies in Facade Slots
CL01	Terracotta (or similar) Cladding
CL02	Metal Panel
CL03	Chinese Black Granite

Revision	Issue Date	Description	Issued By
08	22/3/16	DD Update	Jason Chung
09	24/3/16	DD Update	Jason Chung
10	27/4/16	DD Update	Jason Chung
11	20/4/16	DD Update	Natalie Fan
12	18/5/16	Revised SSDA Plans	Natalie Fan
13	10/6/16	SSDA Update	Jason Chung
14	5/9/16	SSDA Update	Jason Chung
15	17/11/16	Revised SSDA Issue	Jason Chung
16	21/4/17	Section 96 Submission	Carmen Chan

CLIENT: <SYDNEY>  
Level 5, 425-431 Sussex Street, Sydney NSW 2000, Australia  
T +61 2 9226 6111  
www.lendlease.com



ARCHITECT: **fjmt** FRANCIS-JONES MOREHEN THORP  
NON-REGISTERED ARCHITECT: RICHARD FRANCIS-JONES (REG NO 5301)

SYDNEY  
Level 5, 70 King Street  
Sydney NSW 2000, Australia  
T +61 2 9251 7077  
F +61 2 9251 7072  
E fjmt@fjmt.com.au  
W www.fjmt.com.au

PROJECT: (SICEEP) Darling Square SE Plot

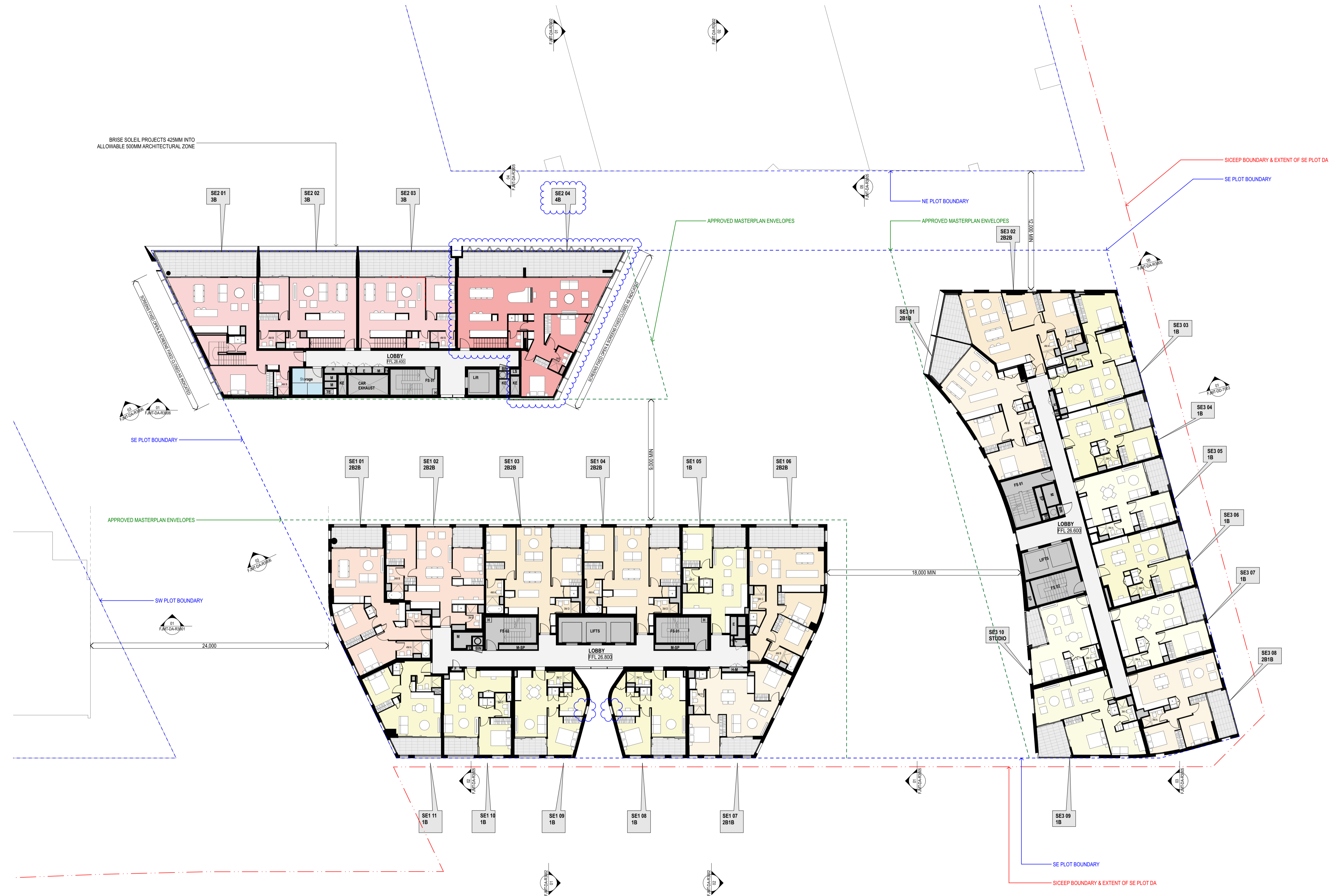
Sydney  
Lend Lease (Haymarket) Pty Limited, ABN 50 147 913 291

TITLE:  
Plans  
L08 SE1 Low Rise, SE2 Pent 01 & SE3 Top

WHEN PRINTED AT 50% @ A3 DRAWING SCALE IS 1:400

SCALE	1:200 @ A1	PROJECT CODE	LLHM V5B
DATE	22/1/16	REVISION	16
SHEET NO.	FJMT-DA-R1010		

For Approval



**GENERAL NOTES**  
 ALL DIMENSIONS AND EXISTING CONDITIONS SHALL BE CHECKED AND VERIFIED BY THE CONTRACTOR BEFORE PROCEEDING WITH THE WORK  
 ALL LEVELS RELATIVE TO AUSTRALIAN HEIGHT DATUM  
 DO NOT SCALE DRAWINGS. USE FIGURED DIMENSIONS ONLY

**LEGEND**

S	STUDIO
1B	1 BED
2B1B	2 BED + 1 BATH
2B2B	2 BED + 2 BATH
3B	3 BED
4B	4 BED
COMMUNITY	
RETAIL + NON-RESIDENTIAL	
EXTERNAL AREA	
COURTYARD/BALCONY/WINTER-GARDEN	

ADAPTABLE APARTMENT
CROSS VENT (CFD MODELLING)
CROSS VENT PATH
SOUTH FACING APARTMENTS
2 HOUR SOLAR ACCESS APARTMENTS
NO SOLAR ACCESS APARTMENTS

STORAGE CAGES
---------------

G01	Performance Glazed Window Wall
G02	Performance Glazed Aluminium Framed Sliding doors
G03	Performance Glazed Operable windows
G04	Performance Glazed Operable Window
G05	Performance Glazed Aluminium Framed Sliding doors
G06	Face Glazed Retail Glazing
G06B	Face Glazed Retail Glazing
G06C	Colour Backed Glazing
G06D	Face Glazed Retail Glazing
BAL01	Glazed Balustrade
BAL02	Glazed Balustrade
BAL03	Glazed Balustrade
BAL04	Batten Balustrade
BAL05	Batten Balustrade
AW01	Awning Type 01 (Retractable)
AW02	Awning Type 02 (Glazed with Timber Battens)
AW03	Awning Type 03 (Composite Metal Cladding)
AW04	Awning Type 04 (Composite Metal Cladding)
SC01	Operable perforated metal sunshade screens, 50% open
SC02	Fixed Perforated metal screen
SC03	Brise Soleil
SC04A	Timber (or similar) Batten Screens
SC04B	Timber (or similar) Cladding
SC05	Vertical Perforated fixed metal screen
LV01	Anodised aluminium louvred screen
LV03	Horizontal Fixed louvres
LV04	Powder coated aluminium louvred screen
CONP01	Precast concrete panels with expressed jointing
CONP02A	Precast concrete panels with expressed jointing
CONP02B	Precast concrete panels with expressed jointing
CONP02C	Precast concrete panels with expressed jointing
CONP02D	Precast concrete panels with expressed jointing
CONP03	Precast concrete panels with expressed jointing
CON01	Off-Form Concrete
CON02	Concrete Paint Finish
CON03	Concrete Paint Finish
CON04	Concrete Soffits generally
CON05	Concrete Soffits above Balconies in Facade Slots
CL01	Terracotta (or similar) Cladding
CL02	Metal Panel
CL03	Chinese Black Granite

Revision	Issue Date	Description	Issued By
07	9/3/16	SSDA Update	Simon Barr
08	22/3/16	DD Update	Jason Chung
09	24/3/16	DD Update	Jason Chung
10	20/4/16	DD Update	Natalie Fan
11	18/5/16	Revised SSDA Plans	Natalie Fan
12	10/6/16	SSDA Update	Jason Chung
13	5/9/16	SSDA Update	Jason Chung
14	17/11/16	Revised SSDA Issue	Jason Chung
15	21/4/17	Section 96 Submission	Carmen Chan

CLIENT: <SYDNEY>  
 Level 5, 425-431 Sussex Street, Sydney NSW 2000, Australia  
 T +61 2 9226 6111  
 www.lendlease.com



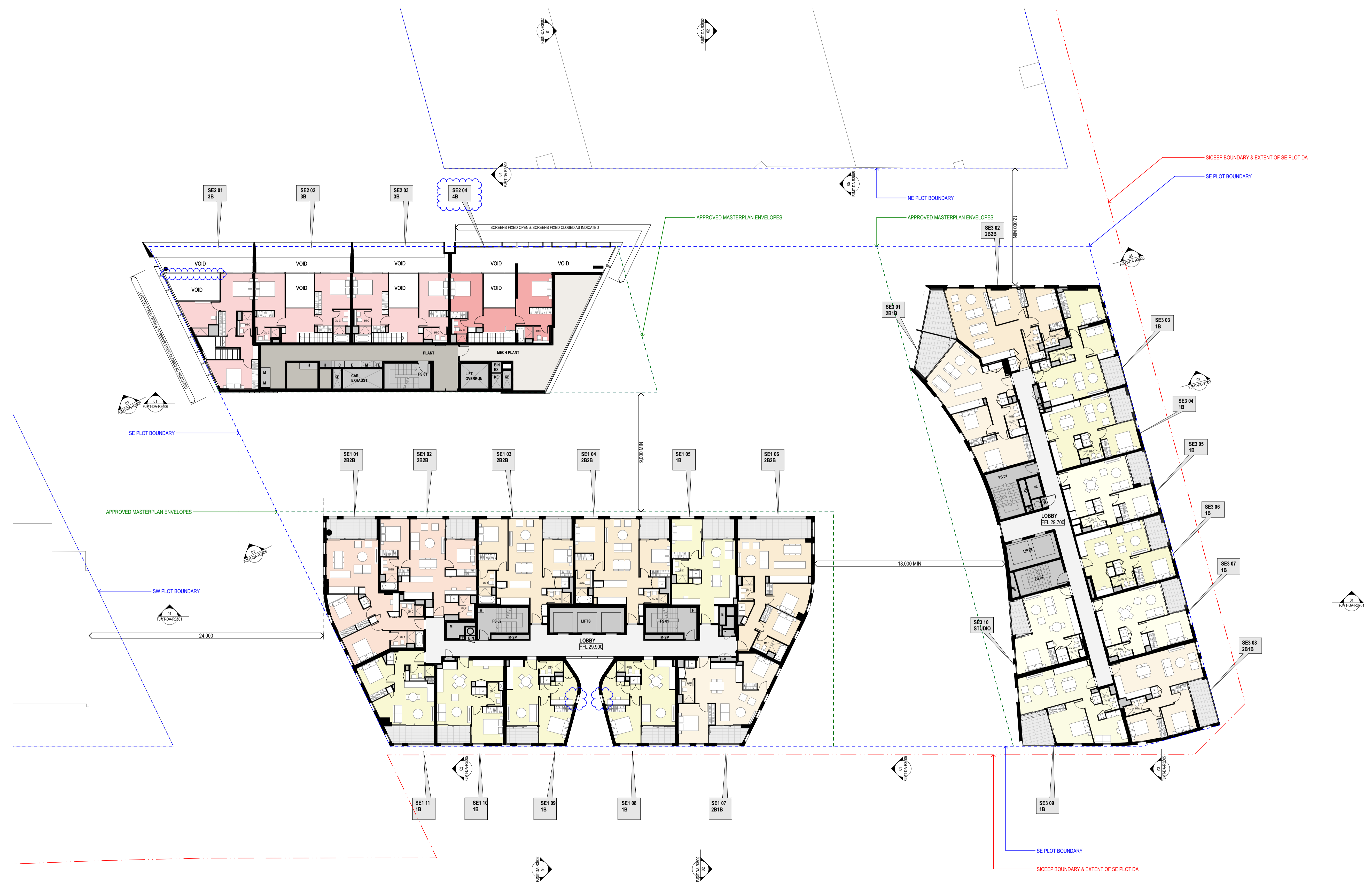
ARCHITECT: **fjmt**  
 Level 5, 70 King Street Sydney NSW 2000 Australia  
 T +61 2 9251 7077  
 F +61 2 9251 7072  
 E fjmt@fjmt.com.au  
 W www.fjmt.com.au

PROJECT: (SICEEP) Darling Square SE Plot  
 Sydney  
 Lend Lease (Haymarket) Pty Limited, ABN 50 147 913 291

TITLE: Plans  
 L09 SE1 Low Rise & SE2 Pent 02  
 WHEN PRINTED AT 50% @ A3 DRAWING SCALE IS 1:400

SCALE	1:200 @ A1	PROJECT CODE	LLHM V5B
DATE	22/1/16	REVISION	15
SHEET NO.	FJMT-DA-R1011		

For Approval



**GENERAL NOTES**

- ALL DIMENSIONS AND EXISTING CONDITIONS SHALL BE CHECKED AND VERIFIED BY THE CONTRACTOR BEFORE PROCEEDING WITH THE WORK
- ALL LEVELS RELATIVE TO AUSTRALIAN HEIGHT DATUM
- DO NOT SCALE DRAWINGS. USE FIGURED DIMENSIONS ONLY

**LEGEND**

S	STUDIO
1B	1 BED
2B1B	2 BED + 1 BATH
2B2B	2 BED + 2 BATH
3B	3 BED
4B	4 BED
COMMUNITY	
RETAIL + NON-RESIDENTIAL	
EXTERNAL AREA	
COURTYARD/BALCONY/WINTER-GARDEN	

ADAPTABLE APARTMENT
CROSS VENT (CFD MODELLING)
CROSS VENT PATH
SOUTH FACING APARTMENTS
2 HOUR SOLAR ACCESS APARTMENTS
NO SOLAR ACCESS APARTMENTS

STORAGE CAGES
---------------

G01	Performance Glazed Window Wall
G02	Performance Glazed Aluminium Framed Sliding doors
G03	Performance Glazed Operable windows
G04	Performance Glazed Operable Window
G05	Performance Glazed Aluminium Framed Sliding doors
G06	Face Glazed Retail Glazing
G06B	Face Glazed Retail Glazing
G06C	Colour Backed Glazing
G06D	Face Glazed Retail Glazing
BAL01	Glazed Balustrade
BAL02	Glazed Balustrade
BAL03	Glazed Balustrade
BAL04	Batten Balustrade
BAL05	Batten Balustrade
AW01	Awning Type 01 (Retractable)
AW02	Awning Type 02 (Glazed with Timber Battens)
AW03	Awning Type 03 (Composite Metal Cladding)
AW04	Awning Type 04 (Composite Metal Cladding)
SC01	Operable perforated metal sunshade screens, 50% open
SC02	Fixed Perforated metal screen
SC03	Brise Soleil
SC04A	Timber (or similar) Batten Screens
SC04B	Timber (or similar) Cladding
SC05	Vertical Perforated fixed metal screen
LV01	Anodised aluminium louvre screen
LV03	Horizontal Fixed Louvres
LV04	Powder coated aluminium louvre screen
CONP01	Precast concrete panels with expressed jointing
CONP02A	Precast concrete panels with expressed jointing
CONP02B	Precast concrete panels with expressed jointing
CONP02C	Precast concrete panels with expressed jointing
CONP02D	Precast concrete panels with expressed jointing
CONP03	Precast concrete panels with expressed jointing
CON01	Off-Form Concrete
CON02	Concrete Paint Finish
CON03	Concrete Paint Finish
CON04	Concrete Soffits generally
CON05	Concrete Soffits above Balconies in Facade Slots
CL01	Terracotta (or similar) Cladding
CL02	Metal Panel
CL03	Chinese Black Granite

Revision	Issue Date	Description	Issued By
04	5/2/16	SSDA Update	Simon Barr
05	13/2/16	SSDA Final Draft	Simon Barr
06	25/2/16	SSDA Final	Simon Barr
07	9/3/16	SSDA Update	Simon Barr
08	22/3/16	DD Update	Jason Chung
09	22/4/16	DD Update	Natalie Fan
10	18/5/16	Revised SSDA Plans	Natalie Fan
11	18/5/16	SSDA Update	Jason Chung
12	21/4/17	Section 96 Submission	Carmen Chan

**CLIENT** <SYDNEY>  
 Level 5, 425-431 Sussex Street,  
 Sydney, NSW 2000, Australia  
 T +61 2 9226 6111  
 www.lendlease.com

**Lend Lease**

**ARCHITECT** **fjmt**  
 Level 5, 70 King Street  
 Sydney NSW 2000 Australia  
 T +61 2 9251 7077  
 F +61 2 9251 7072  
 E fjmt@fjmt.com.au  
 W www.fjmt.com.au

**PROJECT** (SICEEP) Darling Square SE Plot

**Sydney**  
 Lend Lease (Haymarket) Pty Limited, ABN 50 147 913 291

**TITLE**  
 Plans  
 L10 SE1 Low Rise & SE2 Plant

WHEN PRINTED AT 50% @ A3 DRAWING SCALE IS 1:400	
SCALE 1:200 @ A1	PROJECT CODE LLHM V5B
DATE 22/1/16	REVISION
SHEET NO. <b>FJMT-DA-R1012</b>	<b>12</b>

**For Approval**

