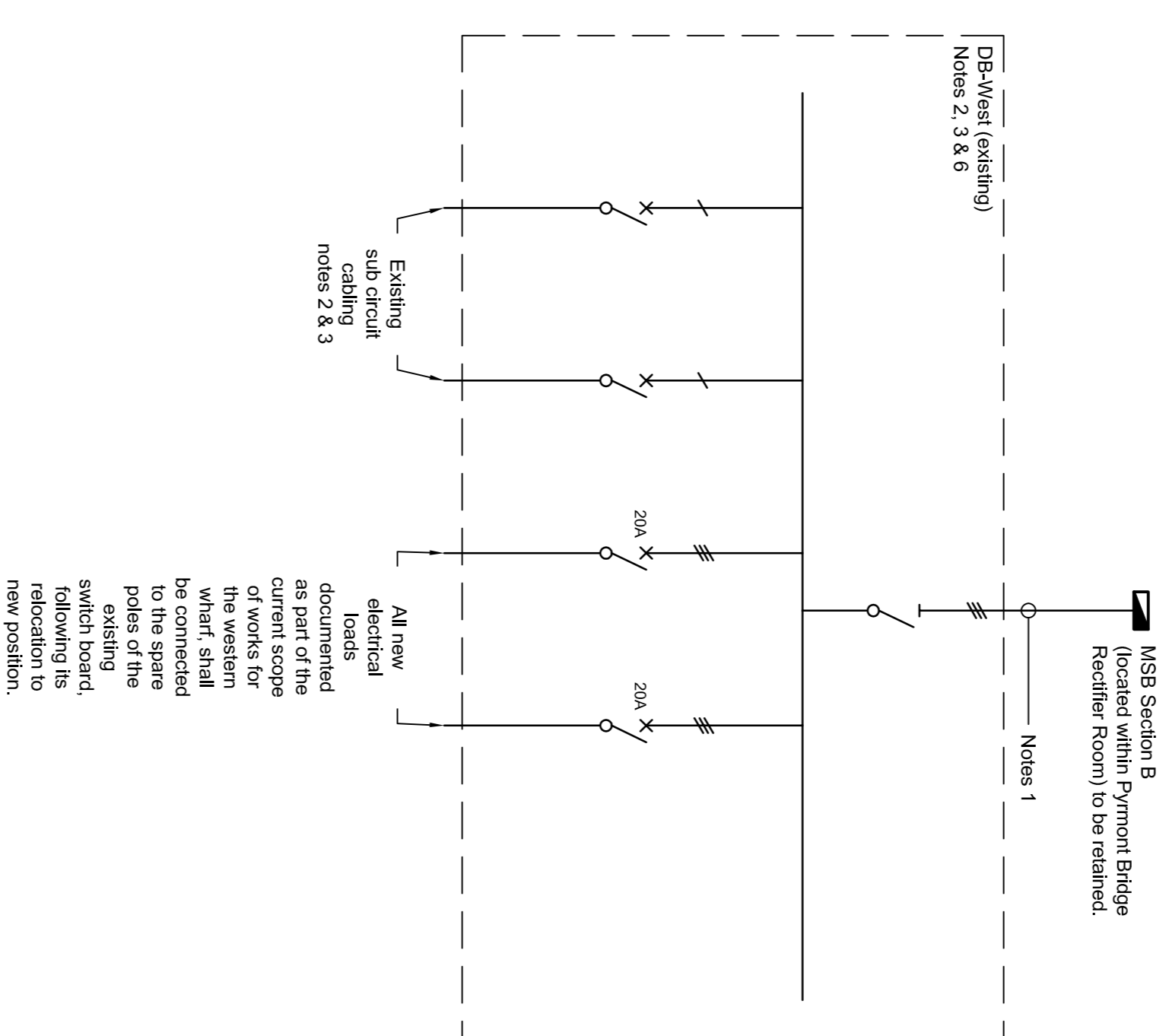
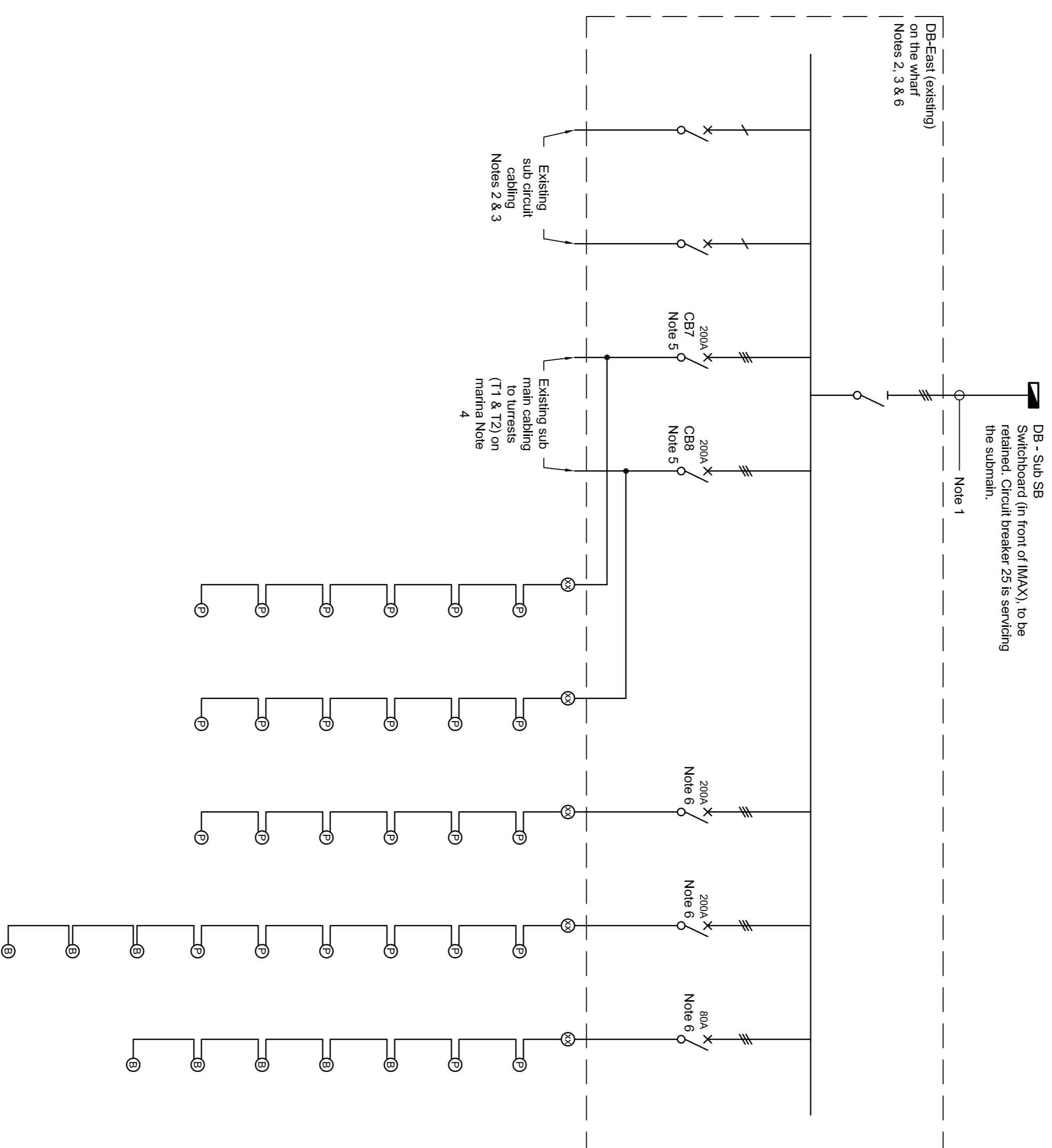
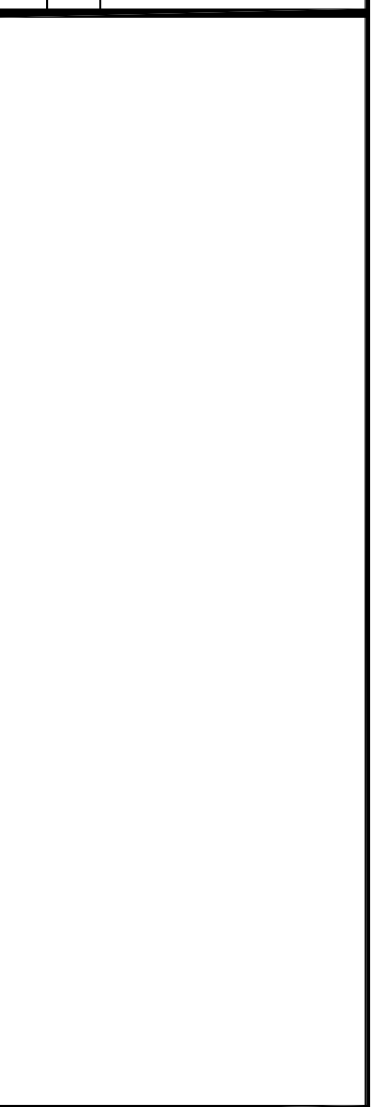


- Notes:
- Existing sub main up to existing DB, to be diverted up to the new position of DB and reterminated on it. Contractor must ensure that the length of sub main is sufficient, else extend the sub main accordingly.
 - Existing DB to be moved to a new position. Refer to the site layout for the new DB position. Contractor must divert the existing cabling and cable management, to and from the existing DB, up to the new DB position.
 - Following relocation of the DB and cabling to & from it, contractor must reinstaite all existing and new services, to & from the DB.
 - Existing sub main cabling to existing turrets shall be removed.
 - Circuit breaker to be reused to service power supply to a group of new services pedestals.
 - Any new switchgear installed on the switchboard, contractor must ensure it is of the same manufacture as existing.



© Mott MacDonald
 This document should not be relied on or used in circumstances other than those for which it was originally prepared and for which Mott MacDonald was commissioned. Mott MacDonald accepts no responsibility for this document to any other party other than the person by whom it was commissioned.

P1	10.08.15	MG	Developed Design	BW	BD
Rev	Date	Drawn	Description	CHK'd	App'd



Level 10, 383 Kent Street
 Sydney, NSW 2000
 Australia
 PO Box 61678
 QVB Sydney, NSW 1220
 Tel: +61 (0)2 9240 6000
 Fax: +61 (0)2 9240 6001
 www.mottmacdonald.com.au



**Cockle Bay Marine Structures
 Eastern Marina and Western Wharf
 Electrical Services
 Single Line Diagram**

Designed	BW	Eng check	BD
Drawn	MG	Coordination	
Dwg check		Approved	KA
Scale at A1	Status	Rev	Sec
Drawing Number	INF	P1	STD
MMD-341498-E-DR-1010			