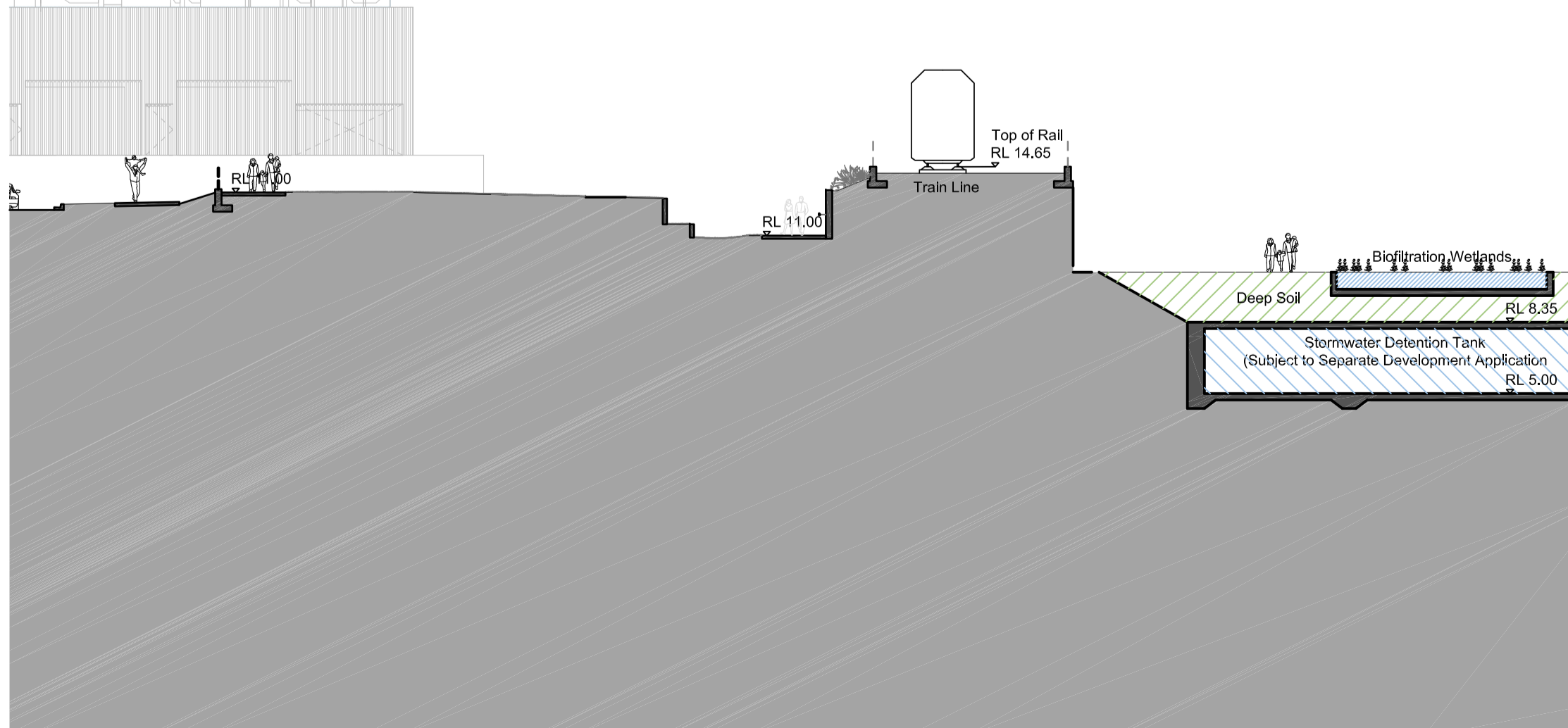
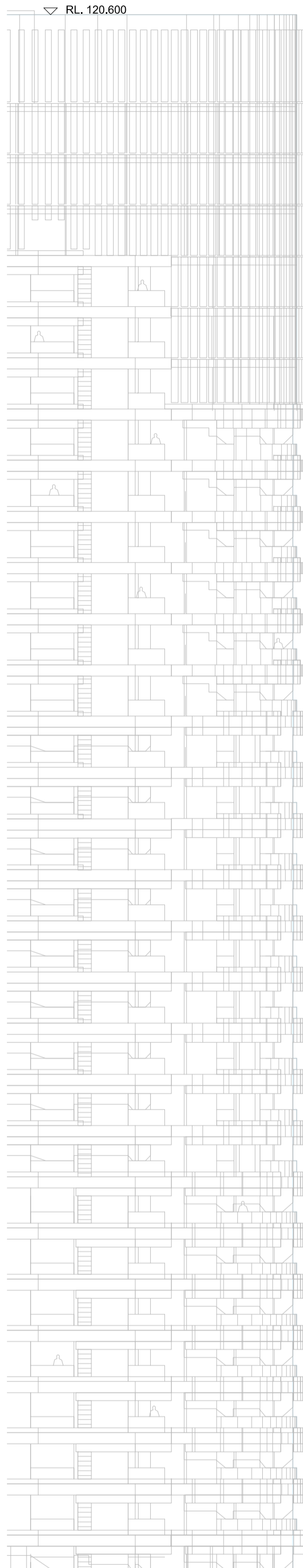
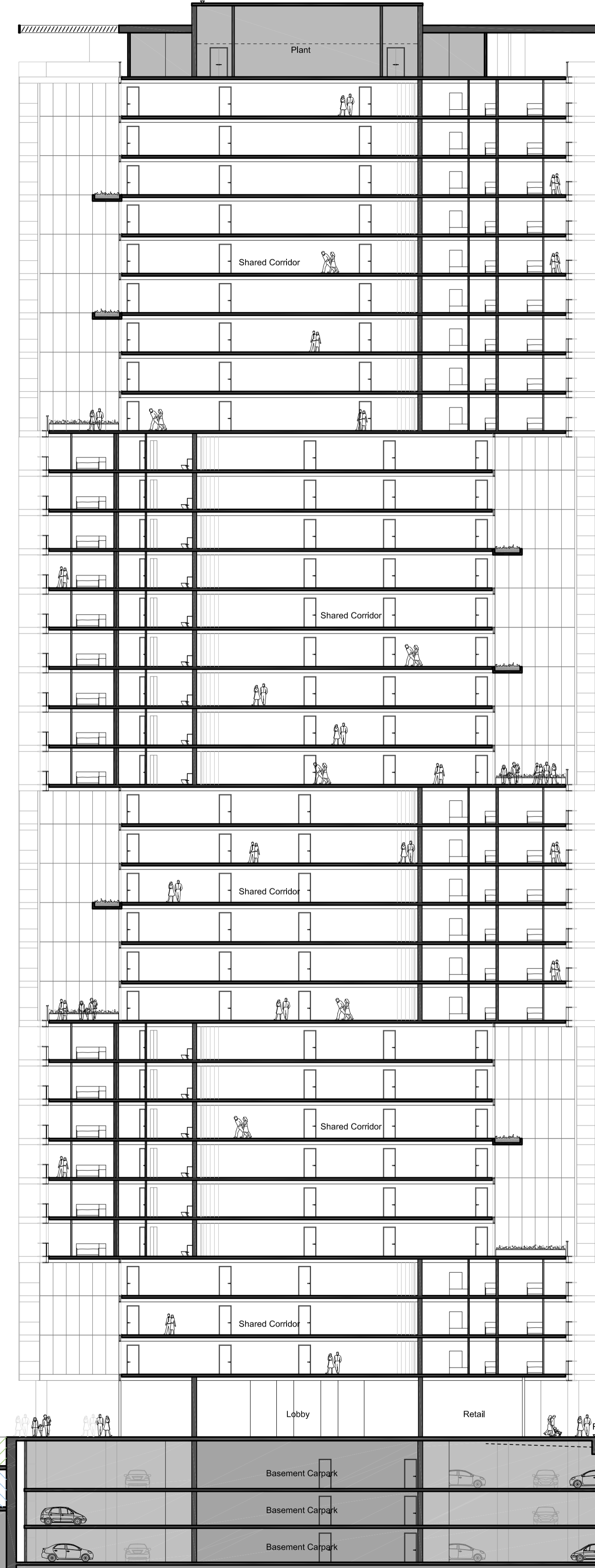


Site 3 Australia Tower behind



Lift Overrun and Motor Room RL 127.40



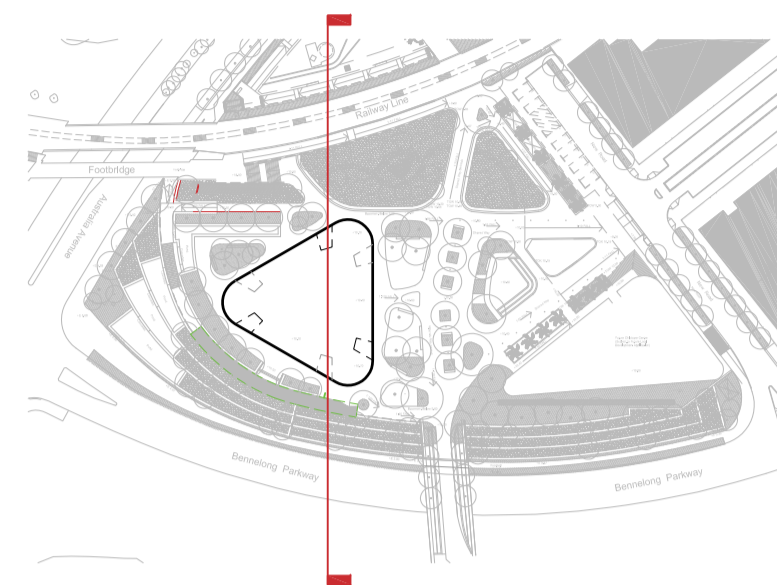
▽	Roof Level RL 125,60	4200
▽	Plant RL 121,40	3200
▽	Level 33 RL 118,20	3200
▽	Level 32 RL 115,00	3200
▽	Level 31 RL 111,80	3200
▽	Level 30 RL 108,60	3200
▽	Level 29 RL 105,40	3200
▽	Level 28 RL 102,20	3200
▽	Level 27 RL 99,00	3200
▽	Level 26 RL 95,80	3200
▽	Level 25 RL 92,60	3200
▽	Level 24 RL 89,40	3200
▽	Level 23 RL 86,20	3200
▽	Level 22 RL 83,00	3200
▽	Level 21 RL 79,80	3200
▽	Level 20 RL 76,60	3200
▽	Level 19 RL 73,40	3200
▽	Level 18 RL 70,20	3200
▽	Level 17 RL 67,00	3200
▽	Level 16 RL 63,80	3200
▽	Level 15 RL 60,60	3200
▽	Level 14 RL 57,40	3200
▽	Level 13 RL 54,20	3200
▽	Level 12 RL 51,00	3200
▽	Level 11 RL 47,80	3200
▽	Level 10 RL 44,60	3200
▽	Level 09 RL 41,40	3200
▽	Level 08 RL 38,20	3200
▽	Level 07 RL 35,00	3200
▽	Level 06 RL 31,80	3200
▽	Level 05 RL 28,60	3200
▽	Level 04 RL 25,40	3200
▽	Level 03 RL 22,20	3200
▽	Level 02 RL 19,00	3200
▽	Level 01 RL 15,80	3200
▽	Proposed landscape footbridge behind	5100
▽	Level 00 RL 10,70	4200
▽	Basement 1 RL 6,50	3000
▽	Basement 2 RL 2,30	3000
▽	Basement 3 RL 0,50	3000

Check all dimensions and site conditions prior to commencement of any work, the purchase or ordering of any materials, fittings, plant, services or equipment and the preparation of shop drawings and/or the fabrication of any components.

All drawings to be read in conjunction with all architectural documents and all other consultants documents.

Do not scale drawings - refer to figured dimensions only. Any discrepancies shall immediately be referred to the architect for clarification.

All drawings may not be reproduced or distributed without prior permission from the architect.



Revision Summary:

NOT FOR CONSTRUCTION

Revision	Date	Description	Initial	Checked
03	27.01.15	Development Application	KM	MLS
02	19.09.14	Development Application	KM	MLS
01	01.09.14	For Information	JC	MLS

Site 68 Sydney Olympic Park

Section B-B East-West

Scale	1:250 @ A1 1:500 @A3
Drawn	Checked
Project No.	S11611
Status	DA
Plot Date	27/1/2015 5:41 PM
Plot File	S:\11600-11699\11611_ecove_sopste6800_main\trans03_mk... ...estones\140919_DA_FINAL REPORT AND DRAWINGS\Archit
Drawing No.	[Revision]

DA06.02[03]

Melbourne 1 Nicholson Street
Melbourne VIC 3000 Australia
T 03 8664 6200 F 03 8664 6300
email mel@batessmart.com.au
http://www.batessmart.com.au

Sydney 43 Brisbane Street
Surry Hills NSW 2010 Australia
T 02 8354 5100 F 02 8354 5199
email syd@batessmart.com.au
http://www.batessmart.com.au

Bates Smart Architects Pty Ltd ABN 68 094 740 986



