

Site 68 Tower

RL 127.40

Australia Towers II Beyond

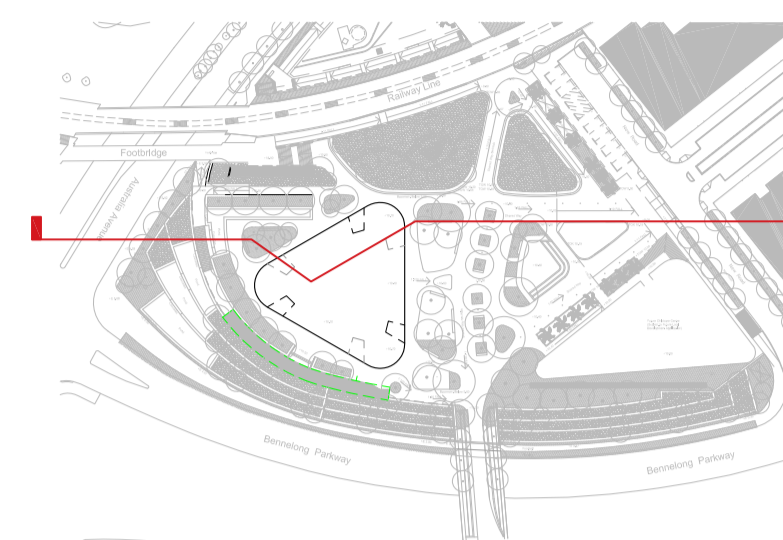
RL 123.300

Check all dimensions and site conditions prior to commencement of any work, the purchase or ordering of any materials, fittings, plant, services or equipment and the preparation of shop drawings and/or the fabrication of any components.

All drawings to be read in conjunction with all architectural documents and all other consultants documents.

Do not scale drawings - refer to figured dimensions only. Any discrepancies shall immediately be referred to the architect for clarification.

All drawings may not be reproduced or distributed without prior permission from the architect.



Revision Summary:

Revision	Date	Description	Initial	Checked
02	19.09.14	Development Application	KM	MLS
01	29.08.14	For Information	JW	MLS

NOT FOR CONSTRUCTION

Revision	Date	Description	Initial	Checked
02	19.09.14	Development Application	KM	MLS
01	29.08.14	For Information	JW	MLS

Site 68
Sydney Olympic Park

Section
A-A
North-South

Scale 1:250 @ A1 1:500 @ A3

Drawn	Checked
Project No.	S11611
Status	DA
Plot Date	22/9/2014 9:56 AM
Plot File	S:\11600-11699\11611_ecovs_sopste6800_main\cad\plots\DA... ...jDA06.01[02].dwg
Drawing No.	[Revision]

DA06.01[02]

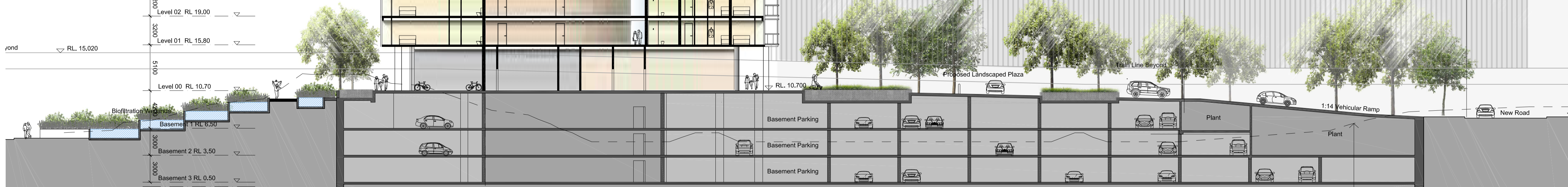
Melbourne 1 Nicholson Street
Melbourne VIC 3000 Australia
T 03 8664 6200 F 03 8664 6300
email mel@batessmart.com.au
http://www.batessmart.com.au

Sydney 43 Brisbane Street
Surry Hills NSW 2010 Australia
T 02 8354 5100 F 02 8354 5199
email syd@batessmart.com.au
http://www.batessmart.com.au

Bates Smart Architects Pty Ltd ABN 68 094 740 986



Roof Level	RL 125.60
4200	
Plant	RL 121.40
3200	
Level 33	RL 118.20
3200	
Level 32	RL 115.00
3200	
Level 31	RL 111.80
3200	
Level 30	RL 108.60
3200	
Level 29	RL 105.40
3200	
Level 28	RL 102.20
3200	
Level 27	RL 99.00
3200	
Level 26	RL 95.80
3200	
Level 25	RL 92.60
3200	
Level 24	RL 89.40
3200	
Level 23	RL 86.20
3200	
Level 22	RL 83.00
3200	
Level 21	RL 79.80
3200	
Level 20	RL 76.60
3200	
Level 19	RL 73.40
3200	
Level 18	RL 70.20
3200	
Level 17	RL 67.00
3200	
Level 16	RL 63.80
3200	
Level 15	RL 60.60
3200	
Level 14	RL 57.40
3200	
Level 13	RL 54.20
3200	
Level 12	RL 51.00
3200	
Level 11	RL 47.80
3200	
Level 10	RL 44.60
3200	
Level 09	RL 41.40
3200	
Level 08	RL 38.20
3200	
Level 07	RL 35.00
3200	
Level 06	RL 31.80
3200	
Level 05	RL 28.60
3200	
Level 04	RL 25.40
3200	
Level 03	RL 22.20
3200	
Level 02	RL 19.00
3200	
Level 01	RL 15.80
3200	
Level 00	RL 10.70
4200	
Basement 1	RL 6.50
3000	
Basement 2	RL 3.50
3000	
Basement 3	RL 0.50
3000	



Natural ground level