

6.0 AMENITY

**6.8 ACCESSIBILITY - ADAPTABLE APARTMENTS**

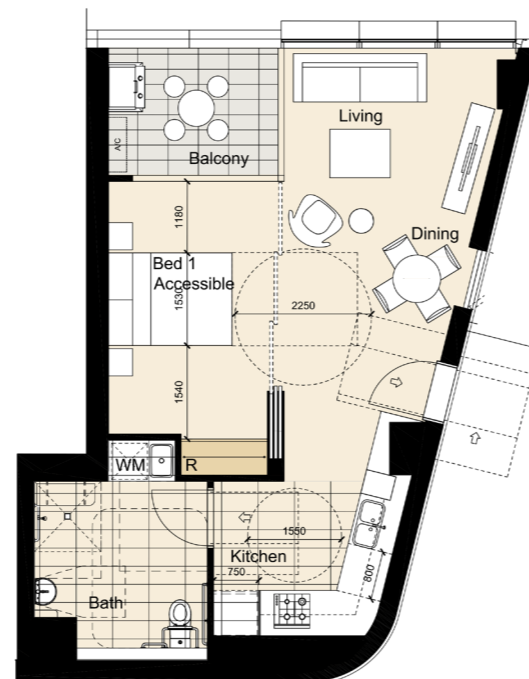
New residential developments are to include opportunity for continuous accessible paths of travel and circulation spaces and should be designed within universal design principals so as to be visitable by people with disabilities as well as provide a diverse mix of adaptable apartments. All 369 residential apartments include a visitable toilet with sufficient circulation spaces, in compliance with AS4299. Further detail is provided in the accessibility report.

The proposed residential tower offers 37 adaptable apartments from a mix of typical 1 bed, 3 bed and 4 bed room apartments that make up 10 % of the total development. 1 bedroom adaptable apartments are provided on most levels of the building with a variety of orientations and view outlooks. The 3 bedroom and 4 bedroom adaptable apartments are provided on higher floors in accordance with the general planning strategy of the building.

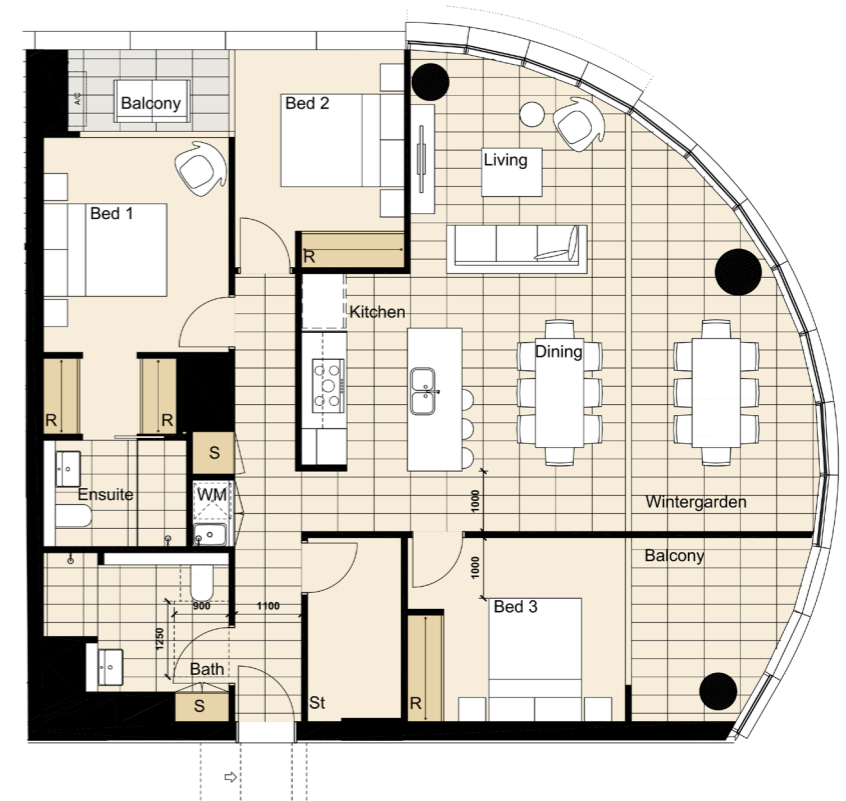
All common internal and external areas will be accessible where required and each adaptable apartment has an allocated accessible carspace within one of the basement levels at close proximity to the basement lift lobbies.



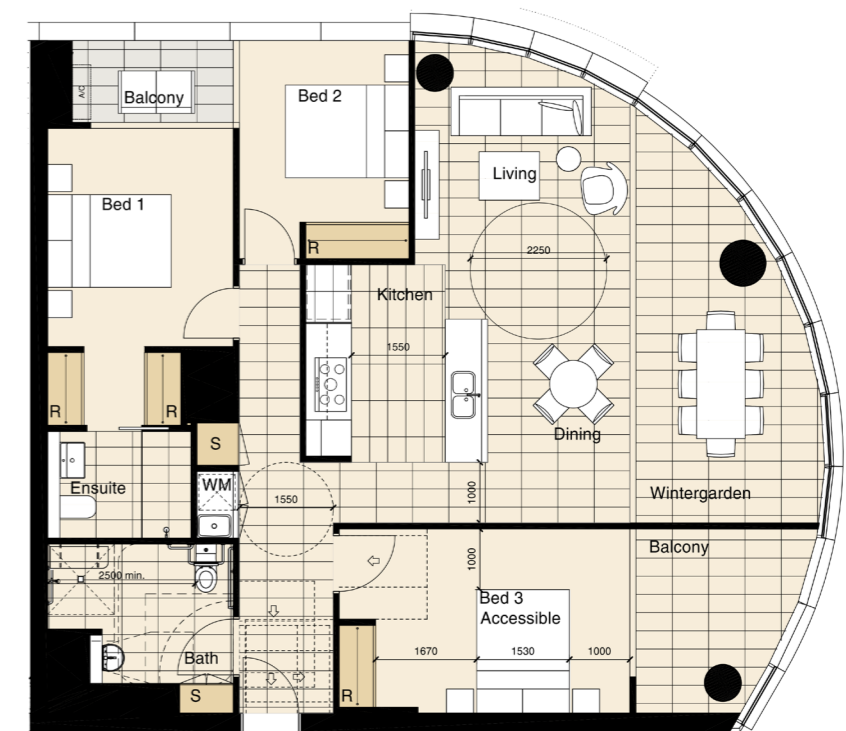
**1 BEDROOM APARTMENT:  
PRE ADAPTION**



**1 BEDROOM APARTMENT:  
POST ADAPTION**

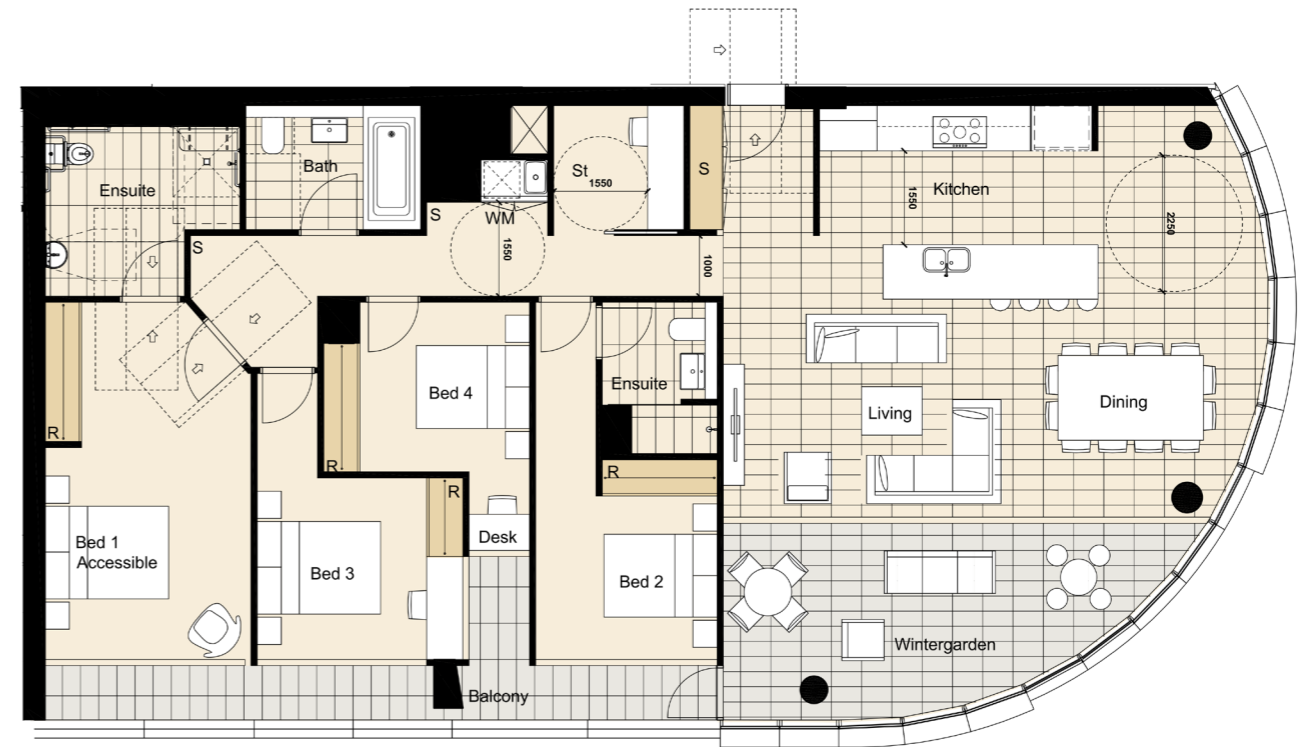


**3 BEDROOM APARTMENT:  
PRE ADAPTION**

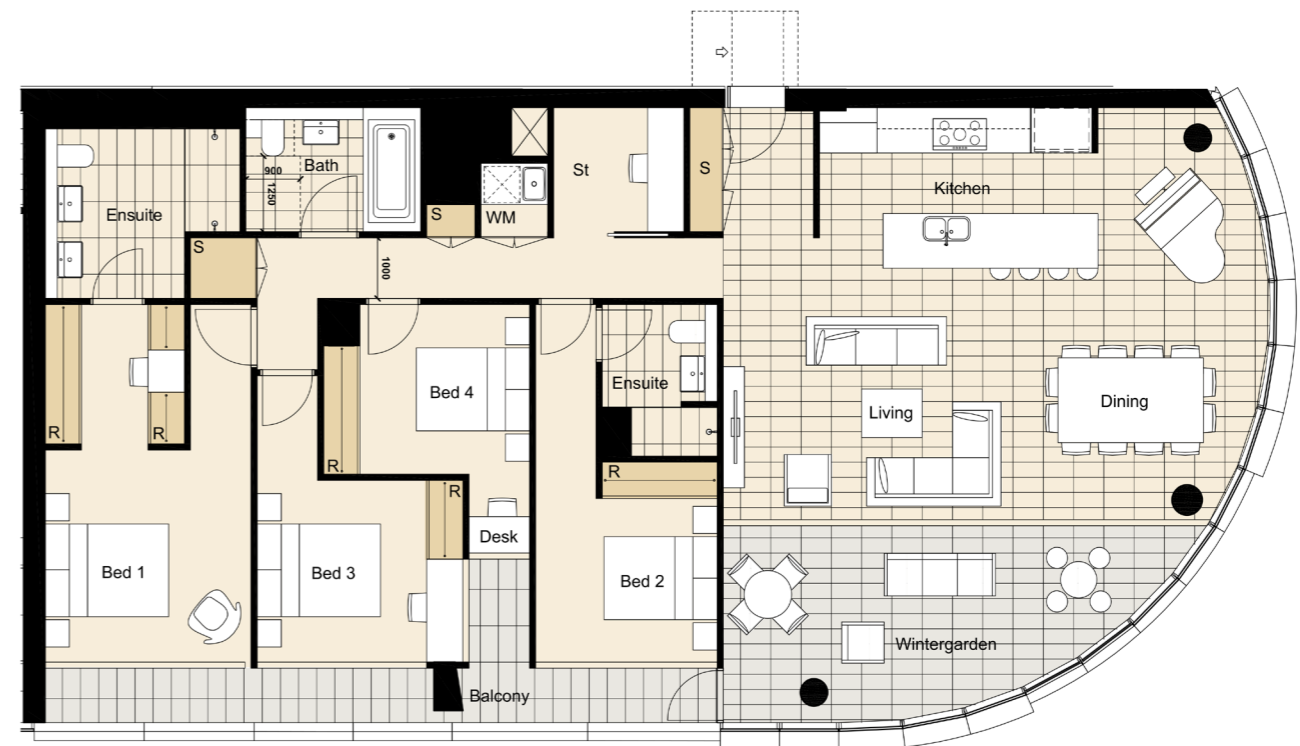


**3 BEDROOM APARTMENT:  
POST ADAPTION**

6.0 AMENITY



**4 BEDROOM APARTMENT:  
PRE ADAPTION**



**4 BEDROOM APARTMENT:  
POST ADAPTION**