

SITE 68

GARDEN POCKETS

SYDNEY OLYMPIC

PARK

DEVELOPMENT APPLICATION REPORT
SYDNEY OLYMPIC PARK
FEBRUARY 2015

CLIENT
Ecove Group



CONSULTANTS

Architecture	Bates Smart
Landscape	Turf Design Studio
Stormwater Management	Alluvium
Civil and Structure	Cardno
Planning	Urbis
Access	Morris Goding
Traffic	Cardno

PROJECT NUMBER
1312



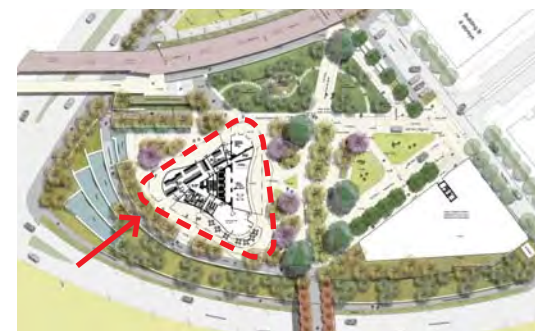
PO Box 419 Cronulla NSW 2230
95 Kingsway, Cronulla 2230

Phone: (+61 2) 9527 3380
Email: sydney@turfdesign.com
ABN: 77 097 739 663

Landscape Masterplan



3D Perspective 01



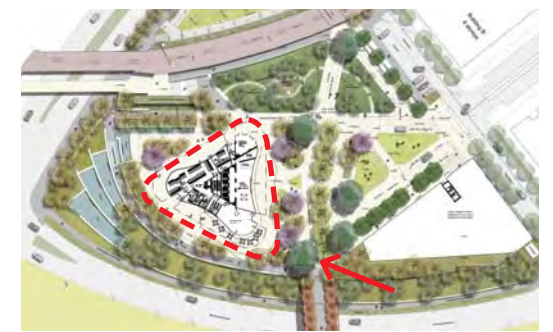
View from Australia Avenue & Bennelong Parkway intersection looking across Site 68

3D Perspective 02

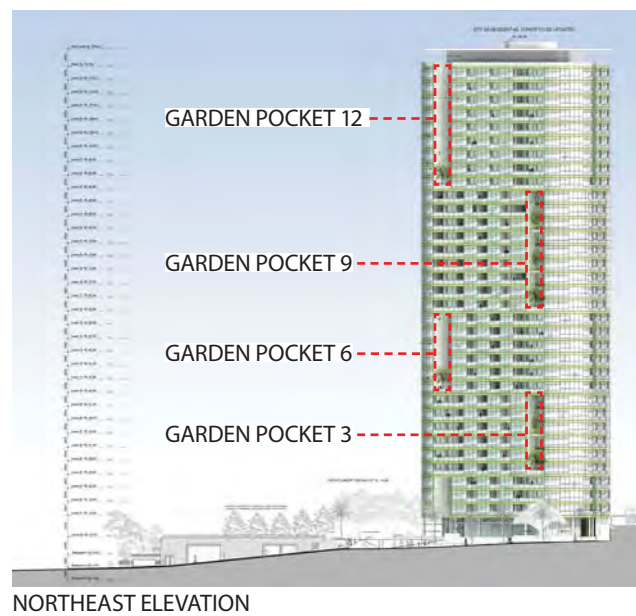
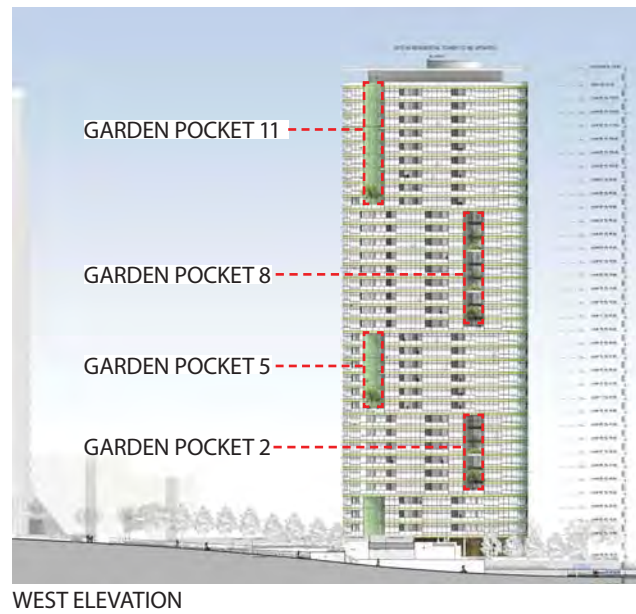
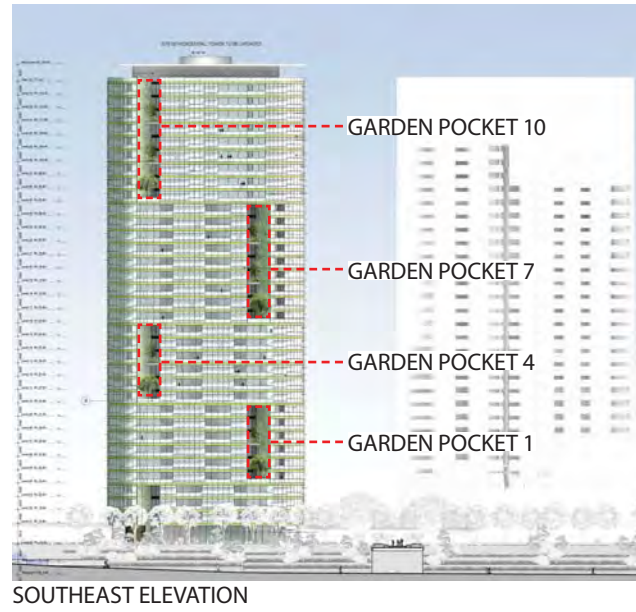


SOUTHEAST FACADE →

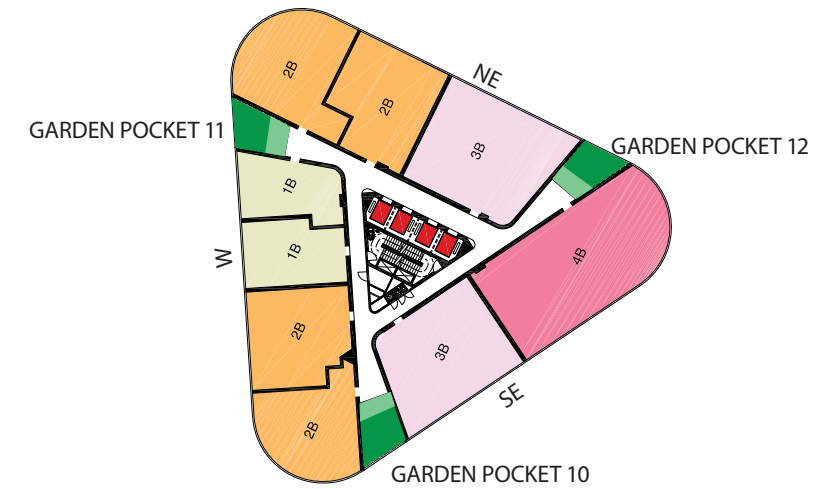
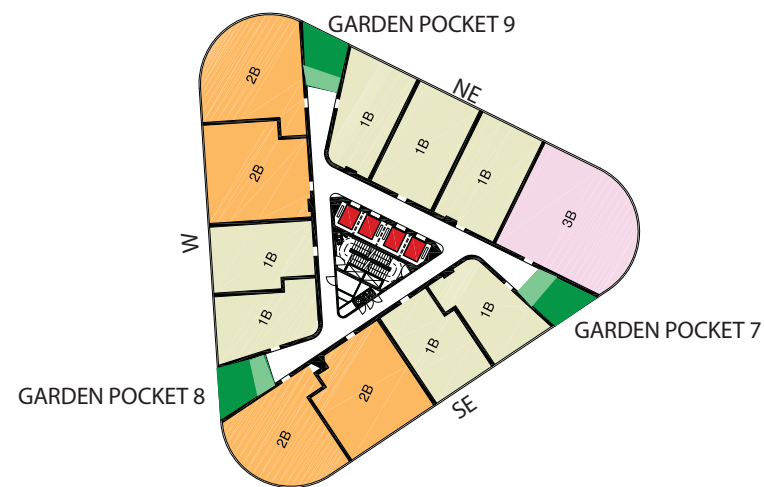
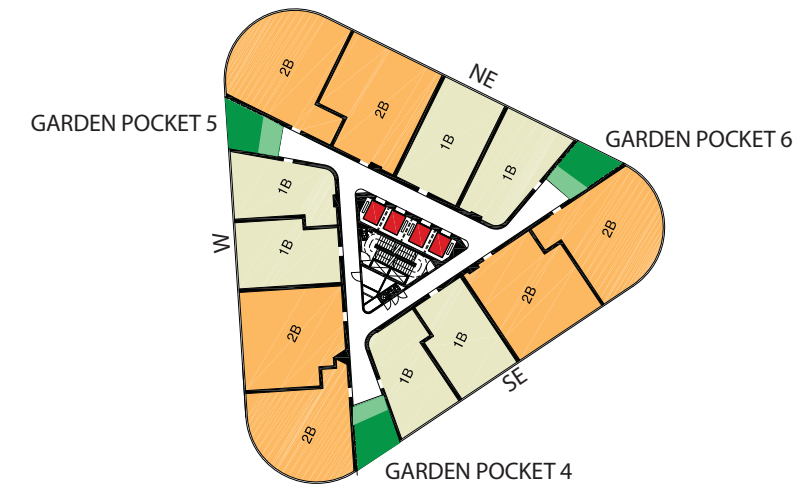
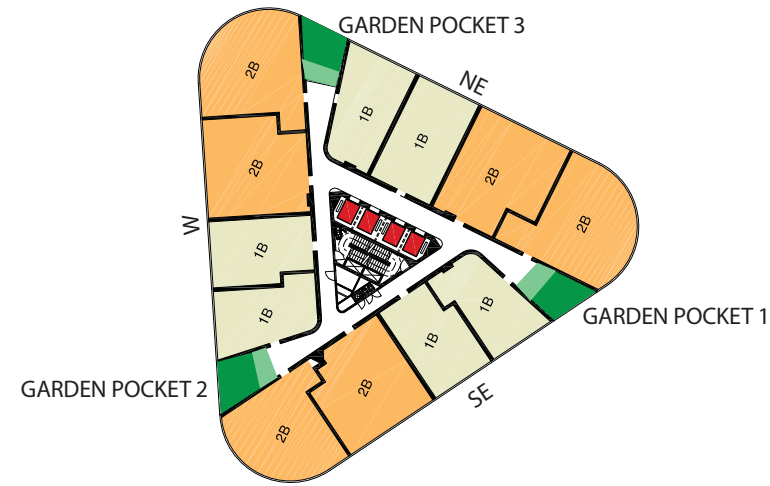
← NORTHEAST FACADE



View across Site 68, looking south towards proposed cafe



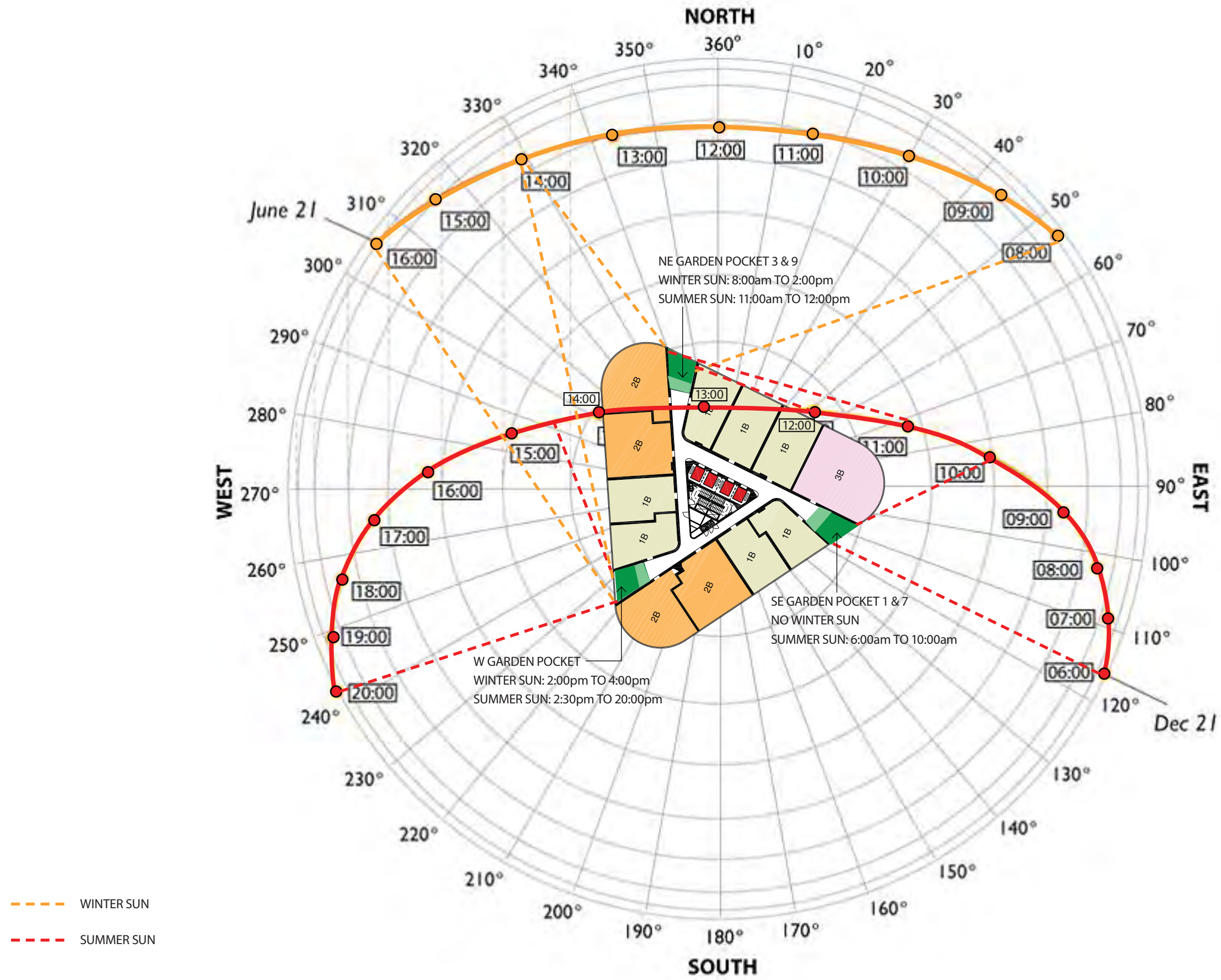
GARDEN POCKET LOCATIONS



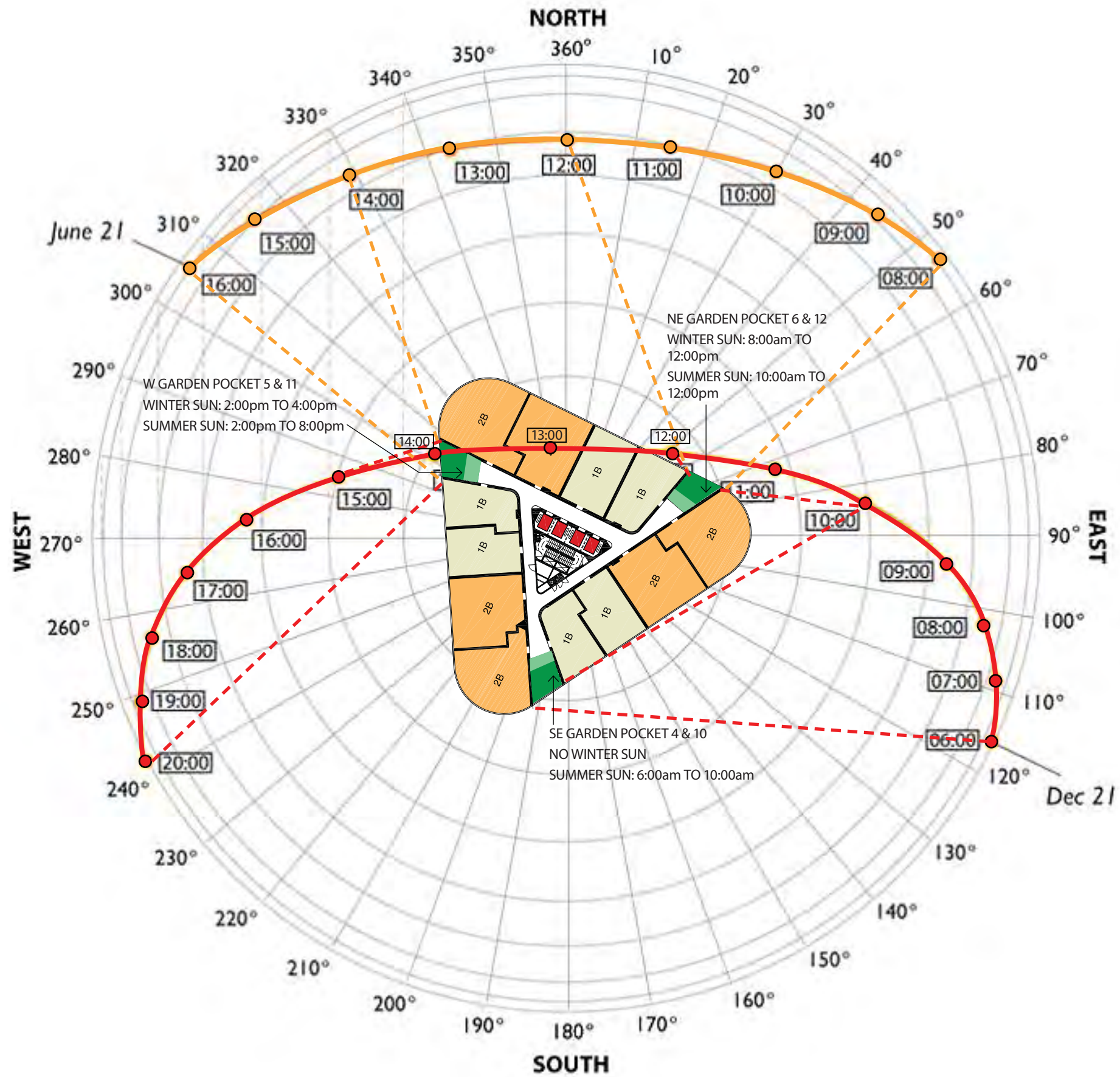
LEGEND

- | | | |
|-----------|----------------|--------------|
| 1 BEDROOM | TERRACE GARDEN | NE NORTHEAST |
| 2 BEDROOM | PLANTER ABOVE | |
| 3 BEDROOM | W WEST | |
| 4 BEDROOM | SE SOUTHEAST | |

Solar Analysis - LEVEL 04-09 & 16-24



Solar Analysis - LEVEL 10-15 & 25-33



Environmental Exposure Analysis

ENVIRONMENTAL EXPOSURE ANALYSIS					
Garden Pockets No.	Orientation	Winter sun	Summer sun	Wind exposure	Sun exposure
Garden Pocket 01	Southeast	None	4h Morning Sun 6:00am to 10:00am	High	Low
Garden Pocket 04	Southeast	None	4h Morning Sun 6:00am to 10:00am	High	Low
Garden Pocket 07	Southeast	None	4h Morning Sun 6:00am to 10:00am	High	Low
Garden Pocket 11	Southeast	None	4h Morning Sun 6:00am to 10:00am	High	Low
Garden Pocket 02	West	2h Afternoon Sun 2:00pm to 4:00pm	6h Afternoon Sun 2:00pm to 8:00pm	High	High
Garden Pocket 05	West	2h Afternoon Sun 2:00pm to 4:00pm	6h Afternoon Sun 2:00pm to 8:00pm	High	High
Garden Pocket 07	West	2h Afternoon Sun 2:00pm to 4:00pm	6h Afternoon Sun 2:00pm to 8:00pm	High	High
Garden Pocket 10	West	2h Afternoon Sun 2:00pm to 4:00pm	6h Afternoon Sun 2:00pm to 8:00pm	High	High
Garden Pocket 03	Northeast	6h Morning & Afternoon Sun 8:00am to 2:00pm	1h Mid-day Sun 11:00am to 12:00pm	High	Medium
Garden Pocket 06	Northeast	4h Morning & Afternoon Sun 8:00am to 12:00pm	2h Mid-day Sun 10:00am to 12:00pm	High	Medium
Garden Pocket 09	Northeast	6h Morning & Afternoon Sun 8:00am to 2:00pm	1h Mid-day Sun 11:00am to 12:00pm	High	Medium
Garden Pocket 12	Northeast	4h Morning & Afternoon Sun 8:00am to 12:00pm	2h Mid-day Sun 10:00am to 12:00pm	High	Medium

In summary, there are varying degrees of environmental exposure across the facades of the building. Wind, heat, sun, shade, and access to rain vary. In particular:

Garden Pockets 1, 4, 7 and 10, will not receive direct sunlight in winter.

Garden Pockets 3, 6, 9 and 12 are positioned to receive the most sunlight in winter at around 6 hrs, whilst Garden Pockets 2, 5, 8 and 11 will only receive 2 hours of afternoon winter sun.

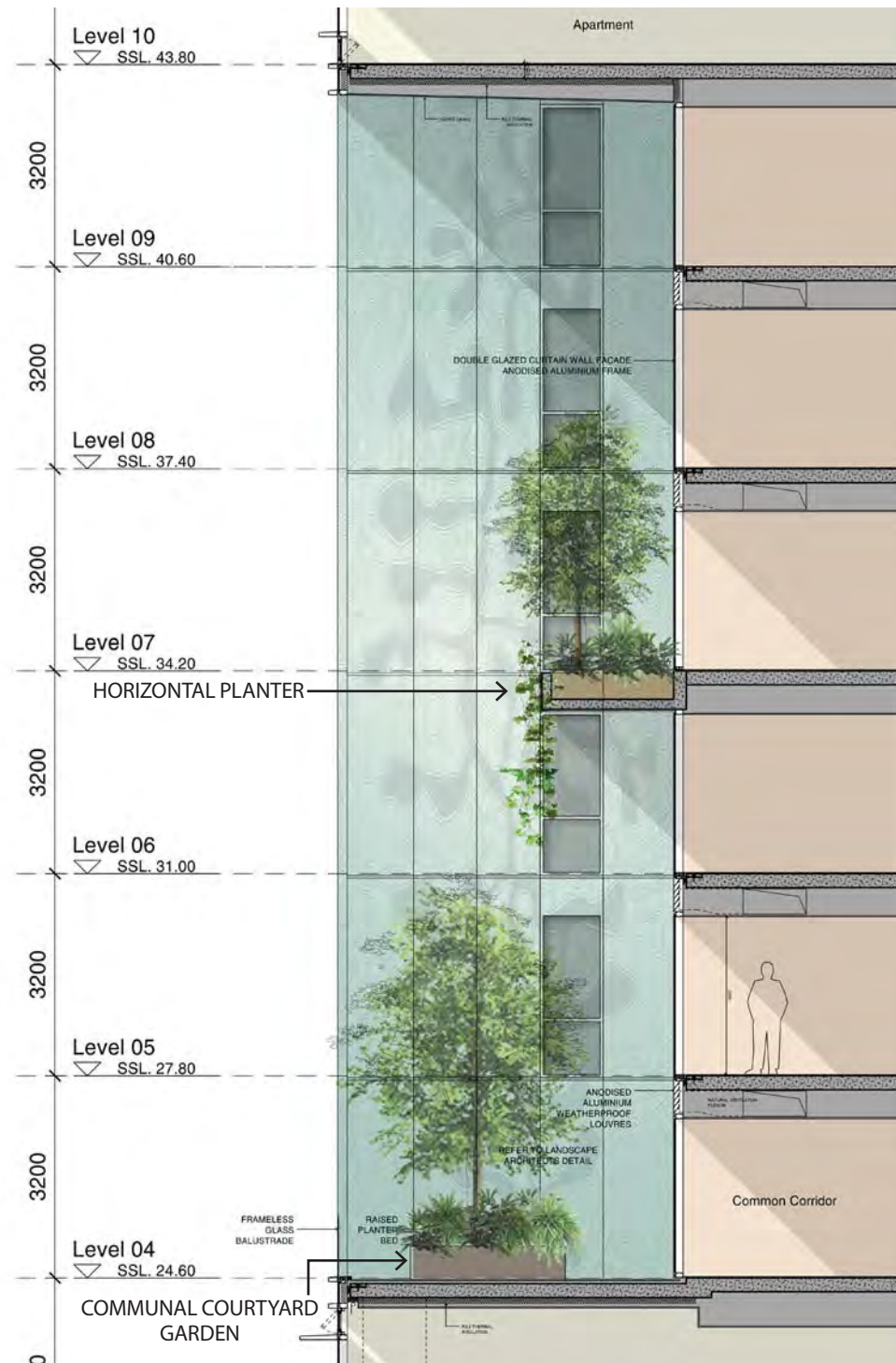
In summer, the south east facade will receive 4 hours morning sun, whilst the north east facade will only receive 2 hours sunshine midday.

The west facade will receive 6 hours of hot afternoon summer sun.

All facades are considered to be high wind.

The varying conditions identified have informed species selection for the project.

Garden Pockets



LANDSCAPE DESIGN INTENT

The garden pockets provide greening of the facade and connection to the broader parkland landscape. The vertical green will be a counterpoint to the horizontal green banding of the facade offering visual interest.

At the base of each slot are landscaped communal courtyard gardens for use by residents. These spaces are intended to provide additional outdoor space for all residents to enjoy and allow every resident to benefit from the best views and sunlight, regardless of the orientation of their own apartment. They incorporate planting and seating, and are softened by a ground plane of timber decking. A single raised planter provides soil volume for a small tree to attain a height of approximately 5-6m filling the bottom of the slot with green, whilst serving to buffer winds making a more pleasant environment for residents.

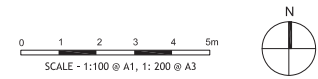
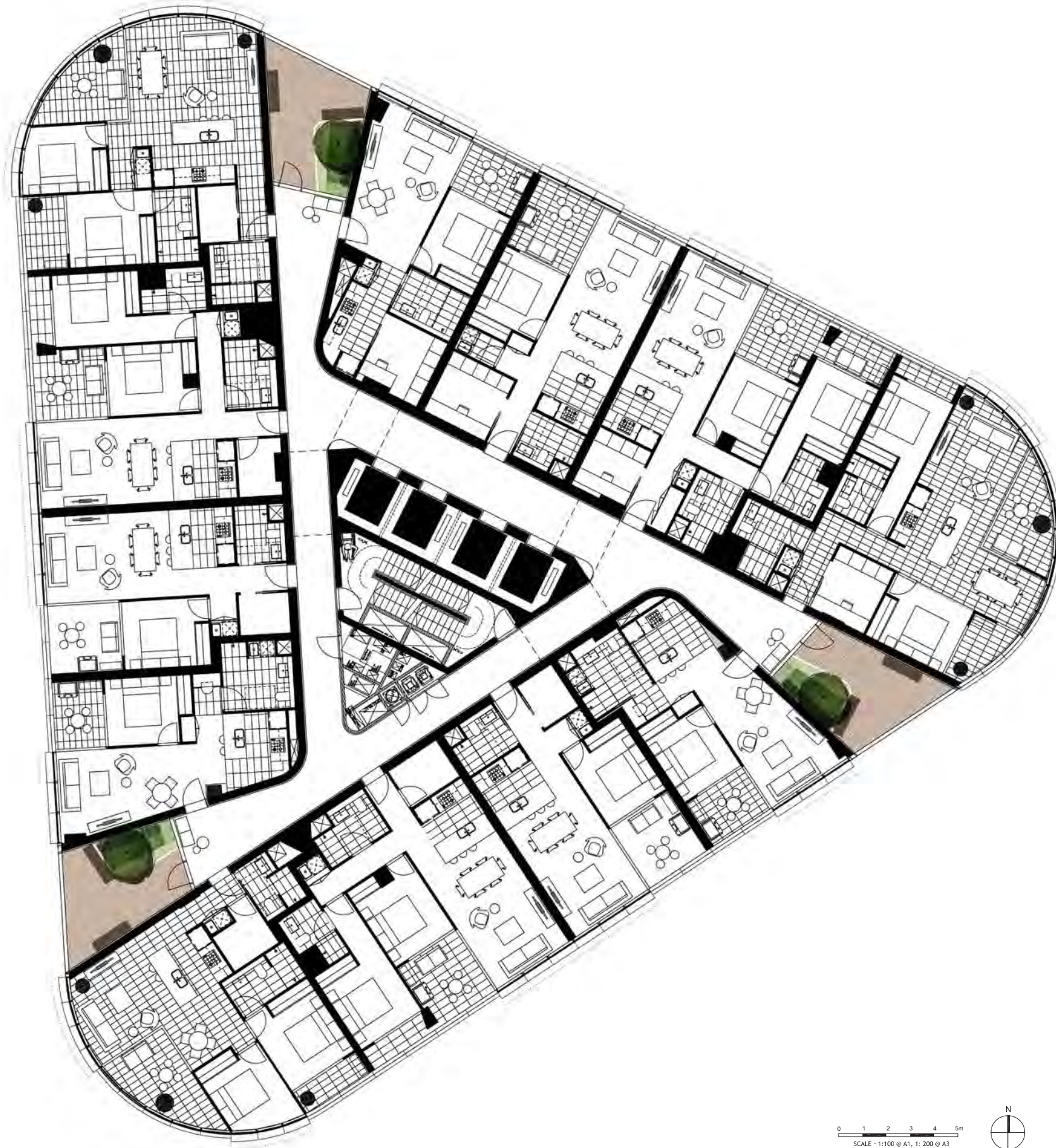
The walls of the slots are clad in a printed glass with a pattern by a recognised artist. The smooth surface of the glass helps to reflect light for vegetation, and deep into the slots to the common corridors and lift lobbies. Viewed from common corridors, the glass reflects the sky and the vegetation within the slots creating a closer connection with the landscape and the elements. Within the upper reaches of the slots horizontal planters provide additional areas for vegetation. Provision of a small tree and cascading plant species will maximise vertical facade greening when viewed from a distance, and provide internal views of skygardens.

Plant selection has been based on analysis of available sunlight and wind modelling. Plant palettes have been developed to respond to varying environmental conditions around the facade.

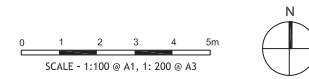
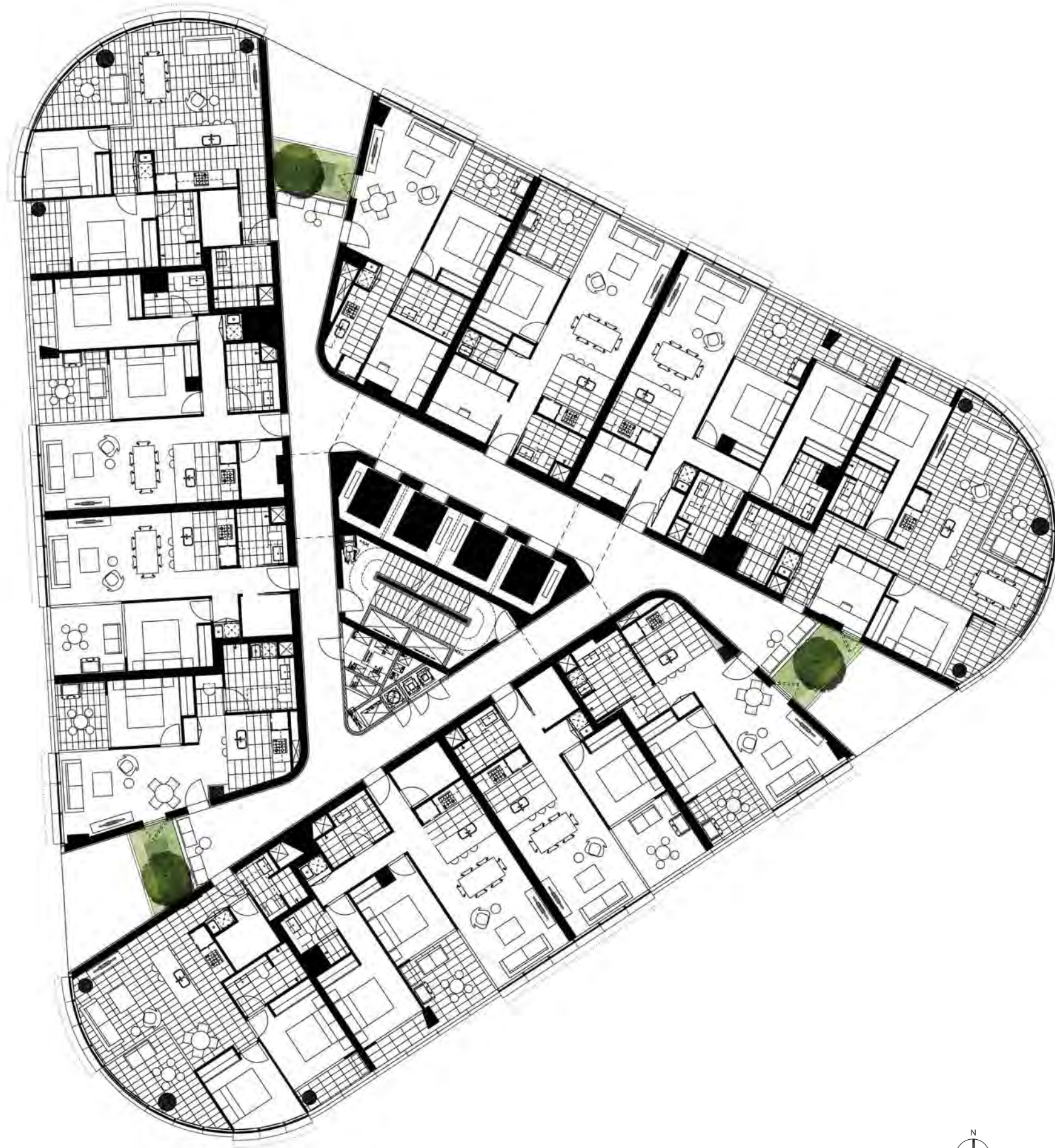
Soil and irrigation requirements are yet to be developed.



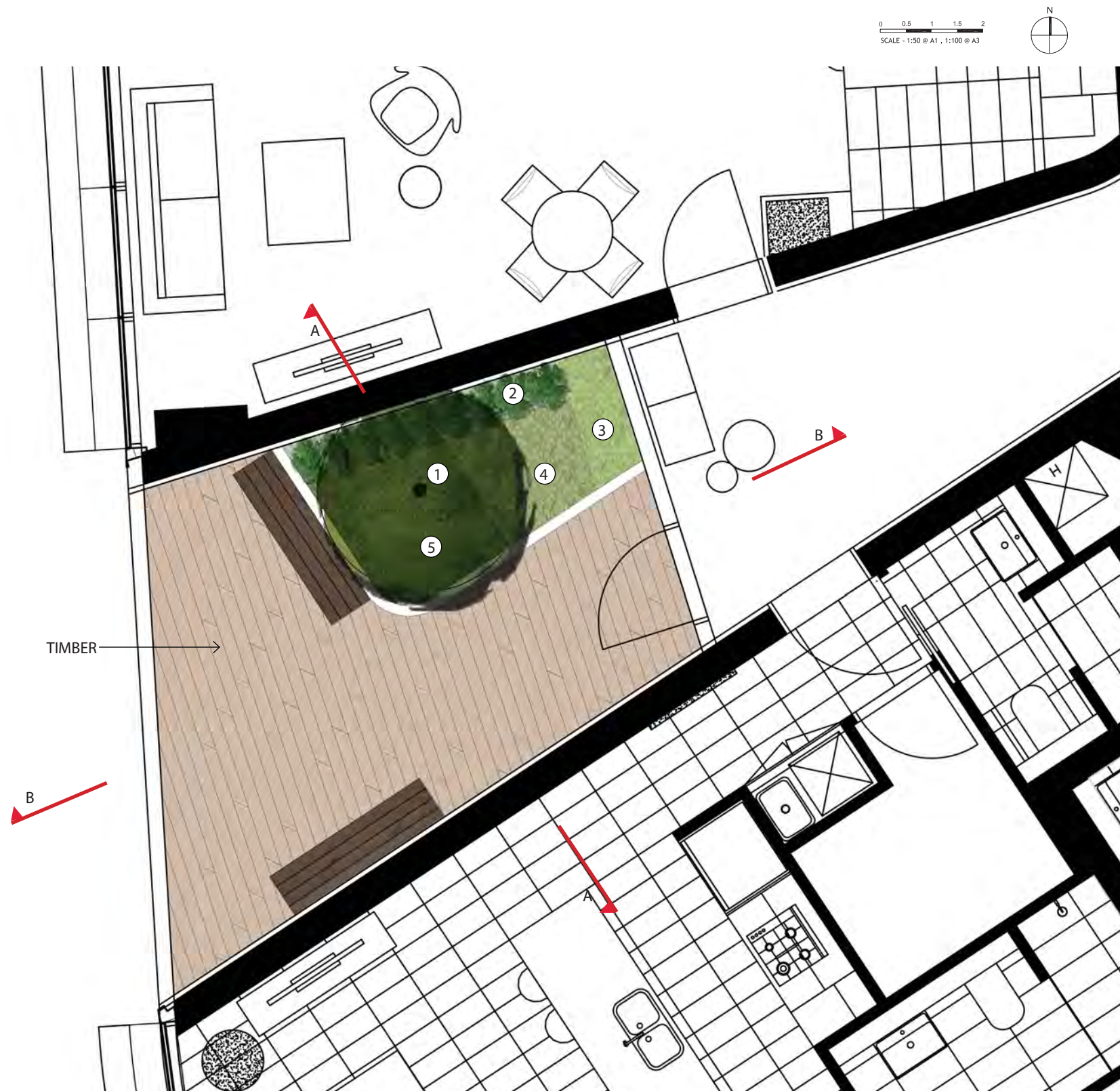
Typical Plan for Communal Courtyard Gardens



Typical Plan for Horizontal Planters



Detailed Plan & Planting Palette for Communal Courtyard Gardens



NORTHEAST FACADE:

1. *Citharexylum quadrangulare*
- 2a. *Crinum pedunculatum*
- 2b. *Philodendron 'Xanadu'*
3. *Liriope gigantea*
4. *Raphiolepis 'Snow Maiden'*
5. *Coprosma x Kirkii*



SOUTHEAST FACADE:

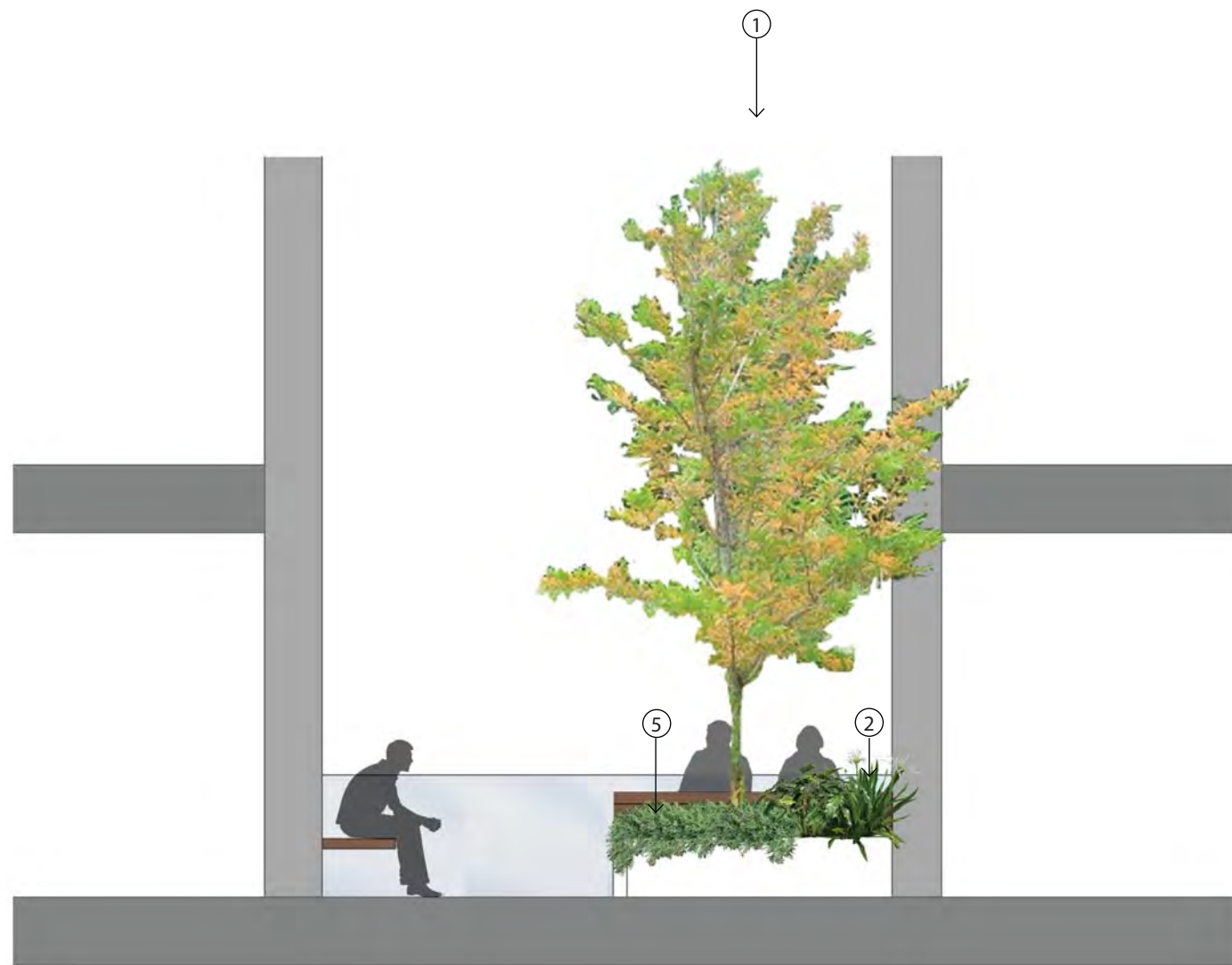
1. *Waterhousia floribunda*
2. *Fatsia japonica*
- 3a. *Sansevieria trifasciata*
- 3b. *Aspidistra elatior*
4. *Chlorophytum comosum*
5. *Syngonium podophyllum*



WEST FACADE:

1. *Tristanopsis 'Luscious'*
2. *Duranta 'Sheena's Gold'*
3. *Clivia miniata*
4. *Dietes bicolour*
5. *Hibbertia scandens*

Landscape Sections for Communal Courtyard Gardens_Northeast Facade



SECTION AA FOR TERRACE GARDEN 1:50 @ A3



SECTION BB FOR TERRACE GARDEN 1:50 @ A3

SPECIES LIST:

- 1. *Citharexylum quadrangulare*
- 2a. *Crinum pedunculatum*
- 2b. *Philodendron 'Xanadu'*
- 3. *Liriope gigantea*
- 4. *Raphiolepis 'Snow Maiden'*
- 5. *Coprosma x Kirkii*

Landscape Sections for Communal Courtyard Gardens_Southeast Facade



SECTION AA FOR TERRACE GARDEN 1:50 @ A3

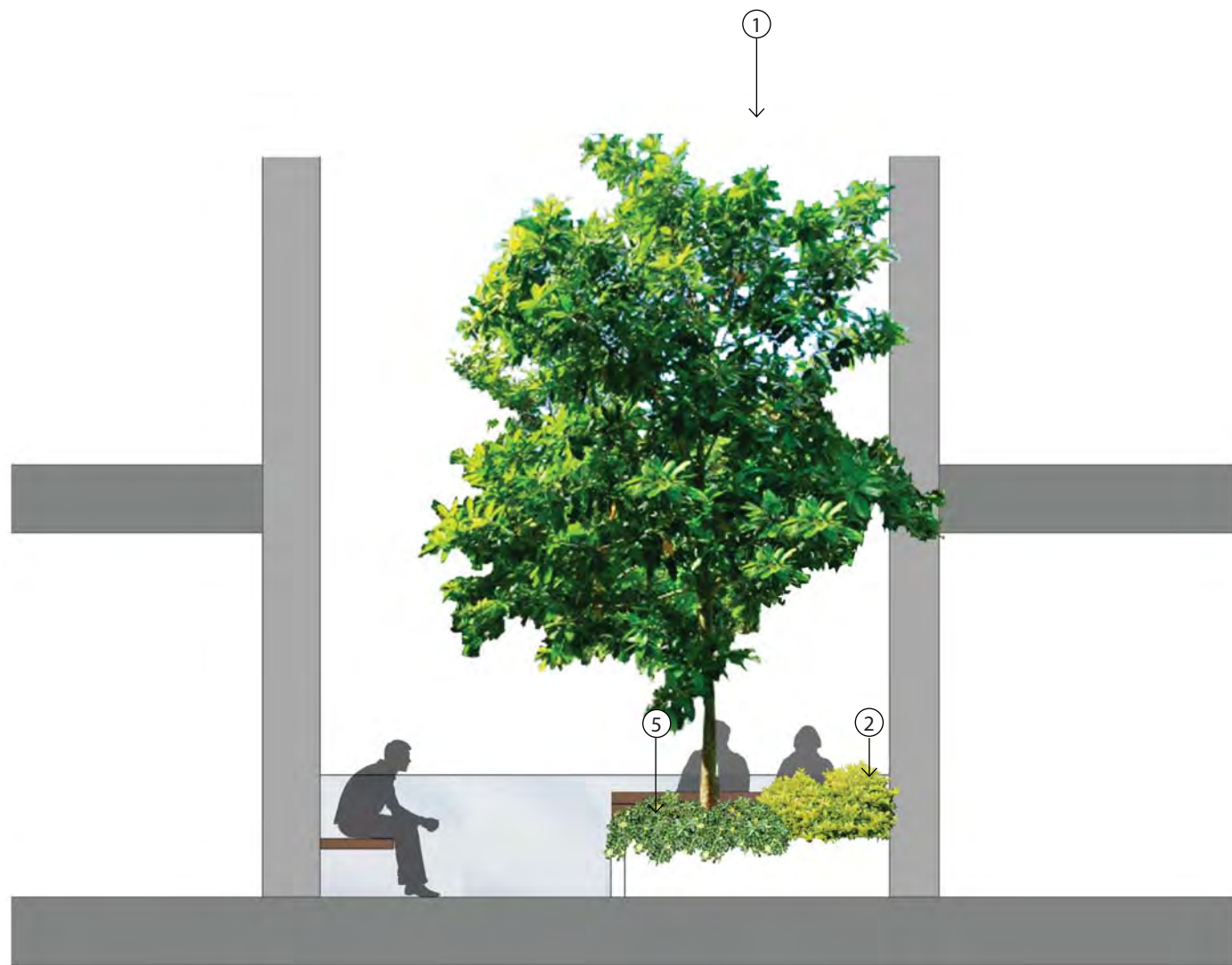


SECTION BB FOR TERRACE GARDEN 1:50 @ A3

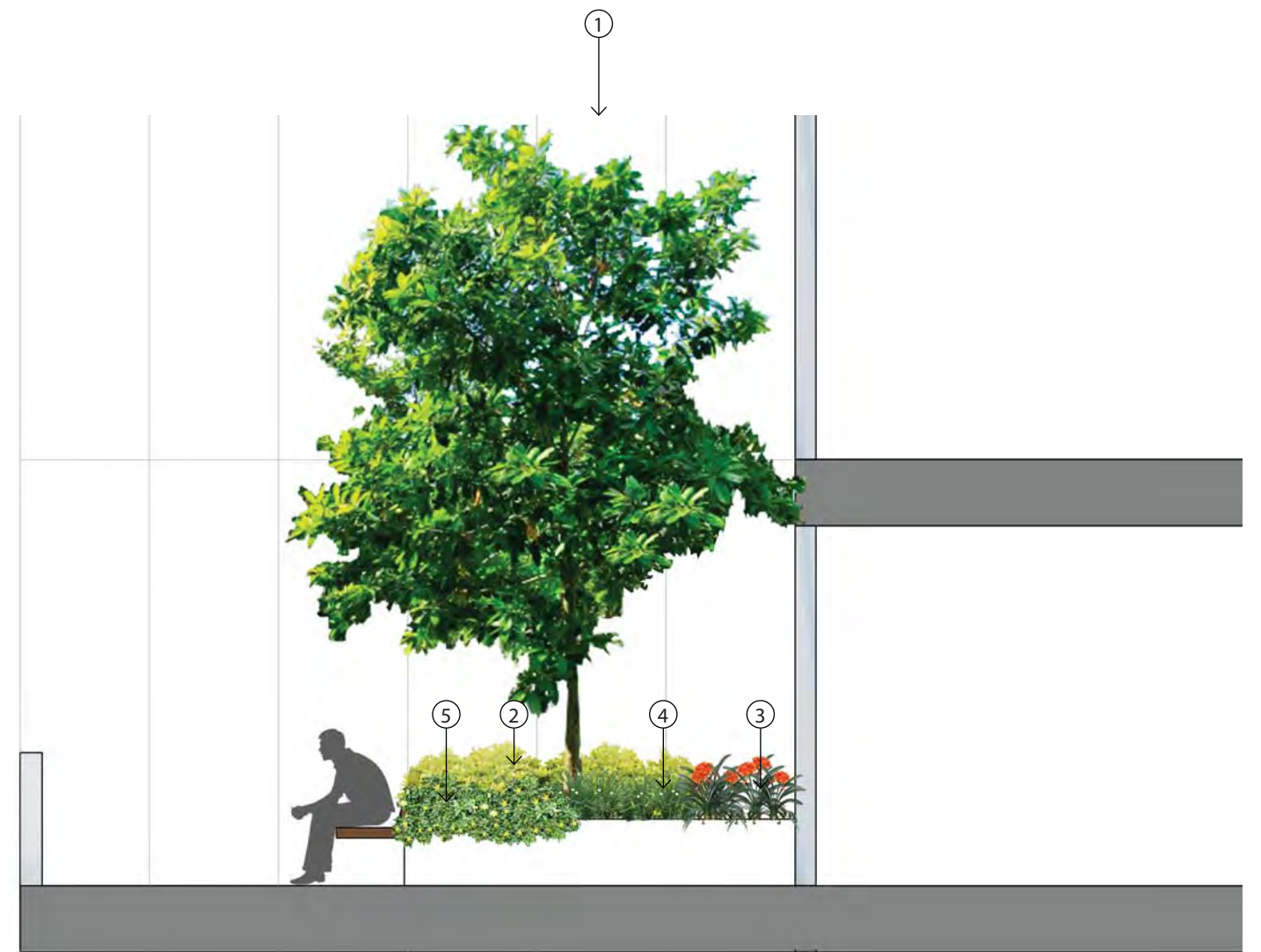
SPECIES LIST:

- 1. *Waterhousia floribunda*
- 2. *Fatsia japonica*
- 3a. *Sansevieria trifasciata*
- 3b. *Aspidistra elatior*
- 4. *Chlorophytum comosum*
- 5. *Syngonium podophyllum*

Landscape Sections for Communal Courtyard Gardens_West Facade



SECTION AA FOR TERRACE GARDEN 1:50 @ A3



SECTION BB FOR TERRACE GARDEN 1:50 @ A3

SPECIES LIST:

1. *Tristanopsis 'Luscious'*
2. *Duranta 'Sheena's Gold'*
3. *Clivia miniata*
4. *Dietes bicolour*
5. *Hibbertia scandens*

Detailed Plan & Planting Palette for Horizontal Planters



NORTHEAST FACADE:
 1. *Citharexylum quadrangulare*
 2a. *Crinum pedunculatum*
 2b. *Philodendron 'Xanadu'*
 3. *Liriope gigantea*
 4. *Raphiolepis 'Snow Maiden'*
 5a. *Convolvulus mauritanicus*
 5b. *Myoporum parvifolium*

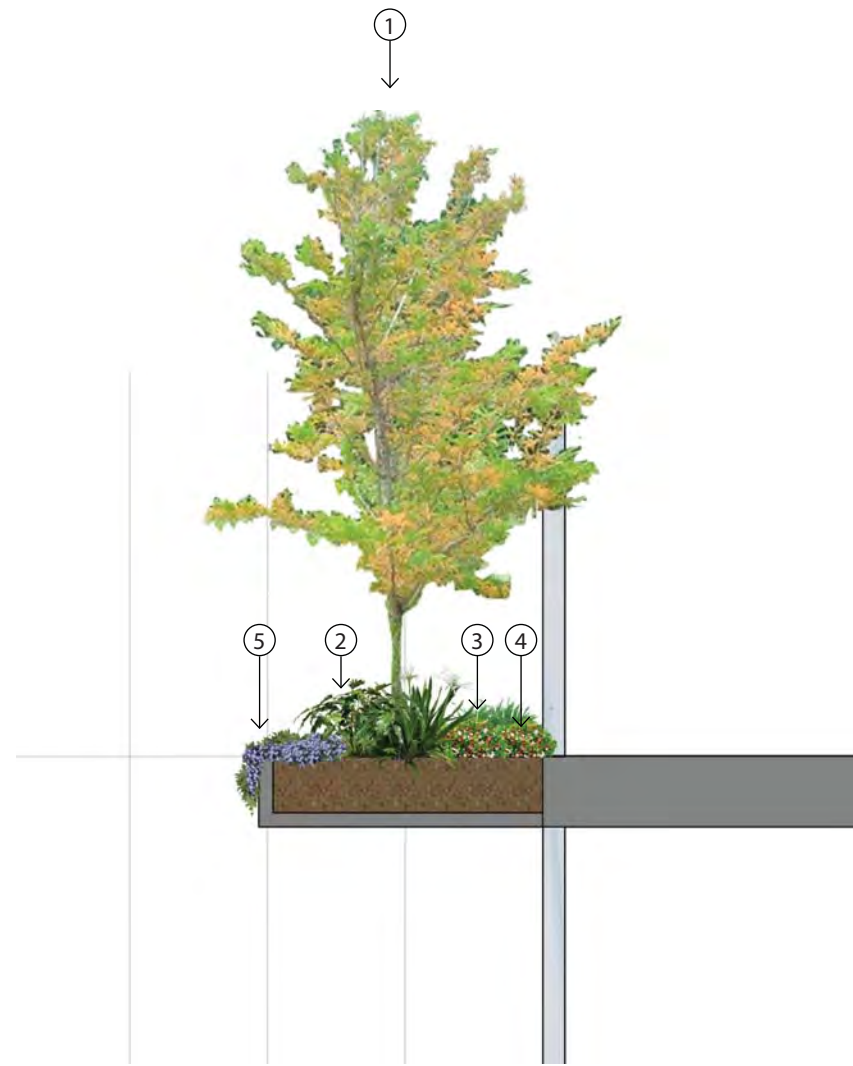


SOUTHEAST FACADE:
 1. *Waterhousia floribunda*
 2. *Fatsia japonica*
 3a. *Sansevieria trifasciata*
 3b. *Aspidistra elatior*
 4. *Chlorophytum comosum*
 5a. *Muehlenbeckia complexa*
 5b. *Trachelospermum jasminoides*



WEST FACADE:
 1. *Tristaniopsis 'Luscious'*
 2. *Duranta 'Sheena's Gold'*
 3. *Clivia miniata*
 4. *Dietes bicolor*
 5a. *Carpobrotus*
 5b. *Mesembryanthemum*

Landscape Sections for Horizontal Planters



NORTHEAST FACADE

SPECIES LIST:

- 1. *Citharexylum quadrangulare*
- 2a. *Crinum pedunculatum*
- 2b. *Philodendron 'Xanadu'*
- 3. *Liriope gigantea*
- 4. *Raphiolepis 'Snow Maiden'*
- 5a. *Convolvulus mauritanicus*
- 5b. *Myoporum parvifolium*



SOUTHEAST FACADE

SPECIES LIST:

- 1. *Waterhousia floribunda*
- 2. *Fatsia japonica*
- 3a. *Sansevieria trifasciata*
- 3b. *Aspidistra elatior*
- 4. *Chlorophytum comosum*
- 5a. *Muehlenbeckia complexa*
- 5b. *Trachelospermum jasminoides*



WEST FACADE

SPECIES LIST:

- 1. *Tristaniopsis 'Luscious'*
- 2. *Duranta 'Sheena's Gold'*
- 3. *Clivia miniata*
- 4. *Diets bicolour*
- 5a. *Carpobrotus*
- 5b. *Mesembryanthemum*